

Huckabee



**ALEDO INDEPENDENT SCHOOL DISTRICT**  
PROJECT #2 EXISTING MIDDLE SCHOOL RENOVATION & PROJECT #3 NEW MIDDLE SCHOOL  
August 4 2020

# AUGUST BOND PROGRESS COMMITTEE UPDATE



ACKNOWLEDGMENTS	01
DESIGN DEVELOPMENT MEETINGS	02
PROJECT #3 NEW MIDDLE SCHOOL	03
PROJECT #2 EXISTING MIDDLE SCHOOL RENOVATION	04
SCHEDULE	05



ALEDO INDEPENDENT SCHOOL DISTRICT

PROJECT #2 EXISTING MIDDLE SCHOOL RENOVATION & PROJECT #3 NEW MIDDLE SCHOOL

DISTRICT BOARD OF TRUSTEES

Hoyt Harris	Board President
Jennifer Loftin	Board Vice President
Forrest Collins	Board Secretary
David Lear	Board Member
Jessica Brown	Board Member
Julie Turner	Board Member
Jennifer Taylor	Board Member

BOND PROGRESS COMMITTEE

Kelly Arnold	Jaime Saenz
Robert Cox	Jeremy Pruett
Allison Dearman	Dan Reilley
Kathy Fry	Carolyn Rekerdres
Kelly Dishman	Chad Tregellas
Nicki Dover	Jeff Streetman
Michael Fernihough	Jeremy Thompson
Nick Lester	Jeff Wade
Jennifer Gamez	Mandy Wurster
Paul Heckathorn	
Christi James	
Matt Morris	
Glenna Loftin	

ALEDO ISD CORE DESIGN TEAM

Dr. Susan Bohn	Superintendent
Lynn McKinney	Deputy Superintendent
Earl Husfeld	Chief Financial Officer
Tyler Boswell	Director of Facilities
Officer Fred Collie	Aledo PD
Mercedes Mayer	Communications
Scott Kessel	Executive Director of Student Services
Amber Crissey	Asst. Deputy Superintendent of C. & I
Staci Hammer	ELAR
Leslee Barnes	Social Studies
Melissa Quisinberry	Technology
Michelle Yates	Science
Debbie Mantooth	Math
Mandy Musselwhite	Principal
Brooks Moore	Director of Technology

PROJECT TEAM

Shannon Bearden, AIA, RID, NCARB Principal, Huckabee
Gary Rademacher, AIA Client Advocate, Huckabee
Konrad Judd, AIA, RID, NCARB, LEED AP Chief Design Officer, Huckabee
Casey Casstevens, AIA, RID Director of Design, Huckabee
Mike Vermeeren, AIA Director of Planning
Mike King, AIA Planner
Joshua Cogburn, AIA Project Architect, Huckabee
Andria Barton, RID Interior Designer, Huckabee
Esther Sumpter, Assoc. AIA, LEED AP Architectural Assoc., Huckabee
Nicole Fraise, Assoc. AIA Architectural Assoc., Huckabee
Karl Pitts, Assoc.AIA Project Leader, Huckabee
Eric James, AIA Project Architect, Huckabee
Jason Derby, Assoc. AIA Architectural Assoc., Huckabee

CIVIL ENGINEERING &  
LANDSCAPE ARCHITECTURE

Teague Nall & Perkins, Inc.  
Fort Worth, TX  
Tom Rutledge

STRUCTURAL ENGINEERING - MS2

Huckabee  
Fort Worth, TX  
Brian Eilerts, PE

STRUCTURAL ENGINEERING - AMS

L.A. Fuess  
Dallas, TX  
Sue Ingram, PE

MEP ENGINEERING

Baird Hampton Brown  
Fort Worth, TX  
Ian Bost, P.E., LEED AP

TECHNOLOGY

WJHW  
Carrollton, TX  
Dave Vieira

FOOD SERVICE

FDP  
Dallas, TX  
Lance Brooks

ROOFING

ARMKO  
Flower Mound TX  
Tim Green





DESIGN CONCEPT:

THE LEARNING EXPERIENCE MUST BE REDESIGNED AND MADE PERSONAL TO FOCUS ON LEARNER-CENTERED DESIGN. LEADERSHIP AND SCHOOL CULTURE LAY THE FOUNDATION FOR DESIGN.

THE PRIORITY CONCEPT IS TO CREATE AN ENVIRONMENT OF ENGAGEMENT, INSPIRATION, INCLUSIVITY, AND EXCITEMENT THROUGH ENCOMPASSING THE HEART OF ALEDO AND ITS COMMUNITY AESTHETIC BY WEAVING CALMING, NATURAL DESIGN ELEMENTS WITH PURPOSEFUL NODS TO THE FUTURE OF EDUCATION AND EDUCATIONAL IDEOLOGY.

DESIGN IS INSPIRED AND DEVELOPED THROUGH VISIONS SHARED BY STUDENTS, PARENTS, TEACHERS, ADMINISTRATORS, FACULTY, AND COMMUNITY MEMBERS.

TOGETHER, WE WILL CREATE SPACES OF TRUE CREATIVITY AND SUCCESS FOR YEARS TO COME.



TEAM TEACHING



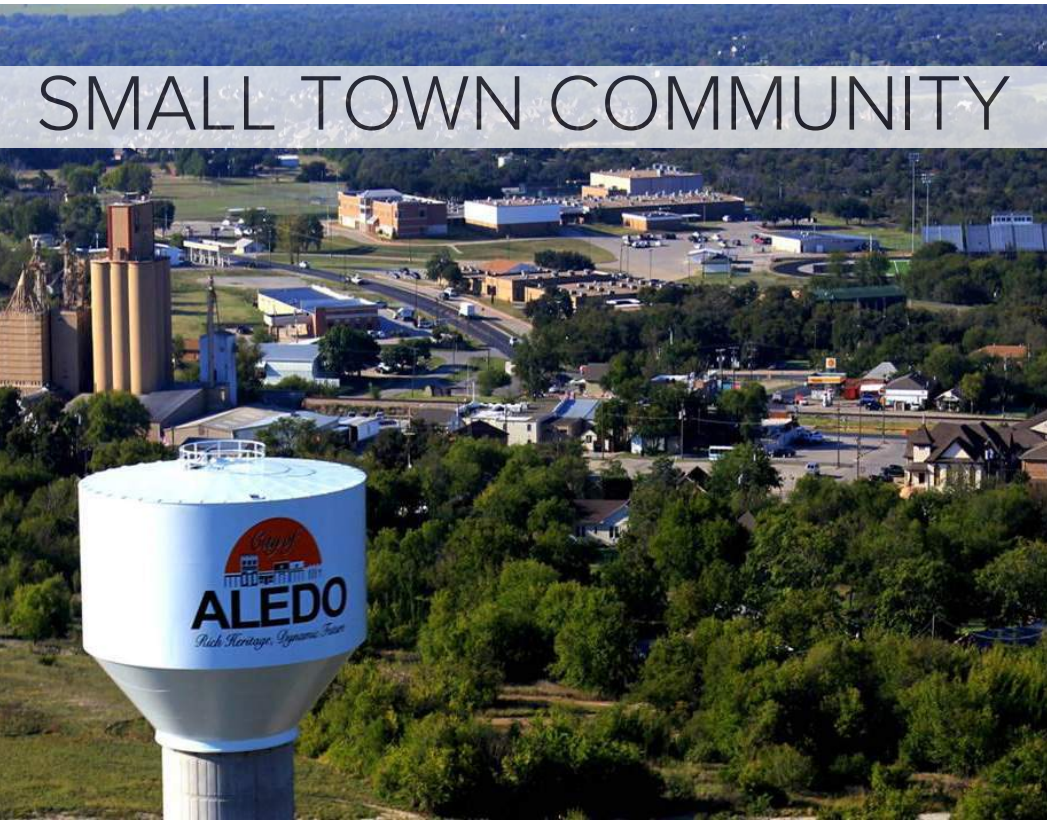
PRIDE IN TRADITION



DAYLIGHT & VIEWS



NATURE INSPIRED



SMALL TOWN COMMUNITY

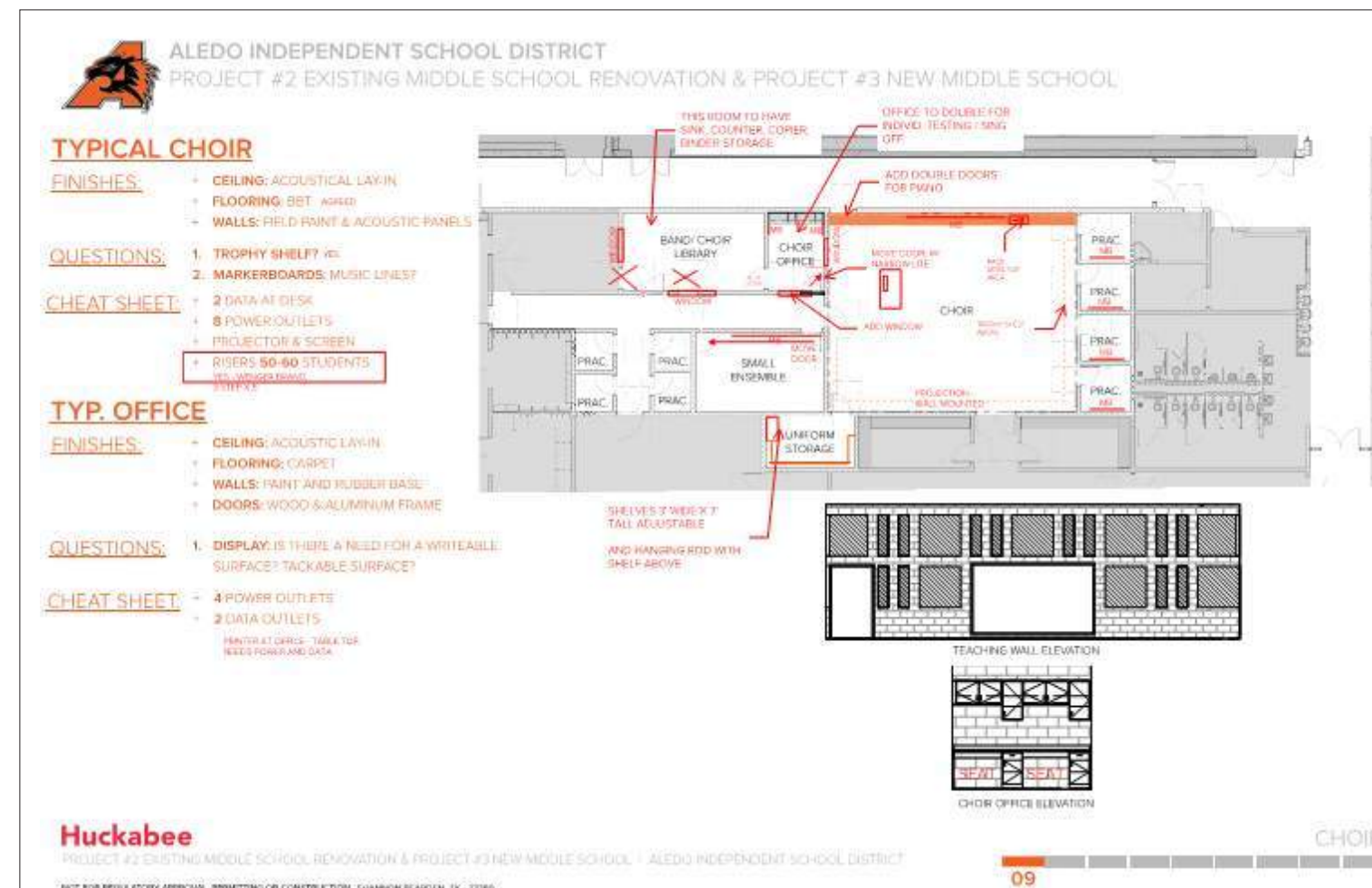
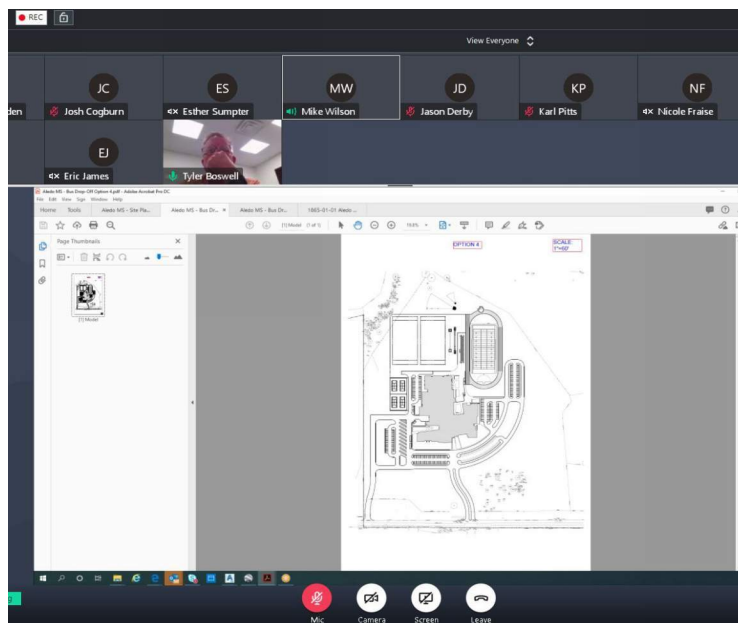




# ALEDO INDEPENDENT SCHOOL DISTRICT

## PROJECT #2 EXISTING MIDDLE SCHOOL RENOVATION & PROJECT #3 NEW MIDDLE SCHOOL

### DESIGN DEVELOPMENT DEPARTMENTAL MEETINGS



LAST BPC UPDATE WAS HELD IN MAY 2020, FOLLOWED BY THE JUNE 8TH SCHEMATIC DESIGN BOARD PRESENTATION. IN THE PAST COUPLE MONTHS, THE DESIGN TEAM HAS PROCEEDED WITH THE DESIGN DEVELOPMENT PHASE, CONDUCTING SEVERAL DESIGN PROGRESS MEETINGS WITH ALEDO ISD EMPLOYEES (ADMINISTRATION, TEACHERS, COACHES, AND THE CABINET TEAM).

MEETINGS WERE HELD JUNE 17 - JULY 30TH WITH EACH DEPARTMENT TO FINALIZE DESIGN, TECHNOLOGY, AND FUNCTIONAL NEEDS OF EACH SPACE PROVIDED AT THE MIDDLE SCHOOLS.

ALONG WITH THE EDUCATIONAL SPECIFICATIONS PREVIOUSLY CREATED, A DESIGN DEVELOPMENT BOOK (PICTURE ABOVE) IS BEING COMPILED TO SERVE AS THE TECHNICAL DESIGN GUIDELINES FOR ALEDO ISD MIDDLE SCHOOLS.

**Huckabee**

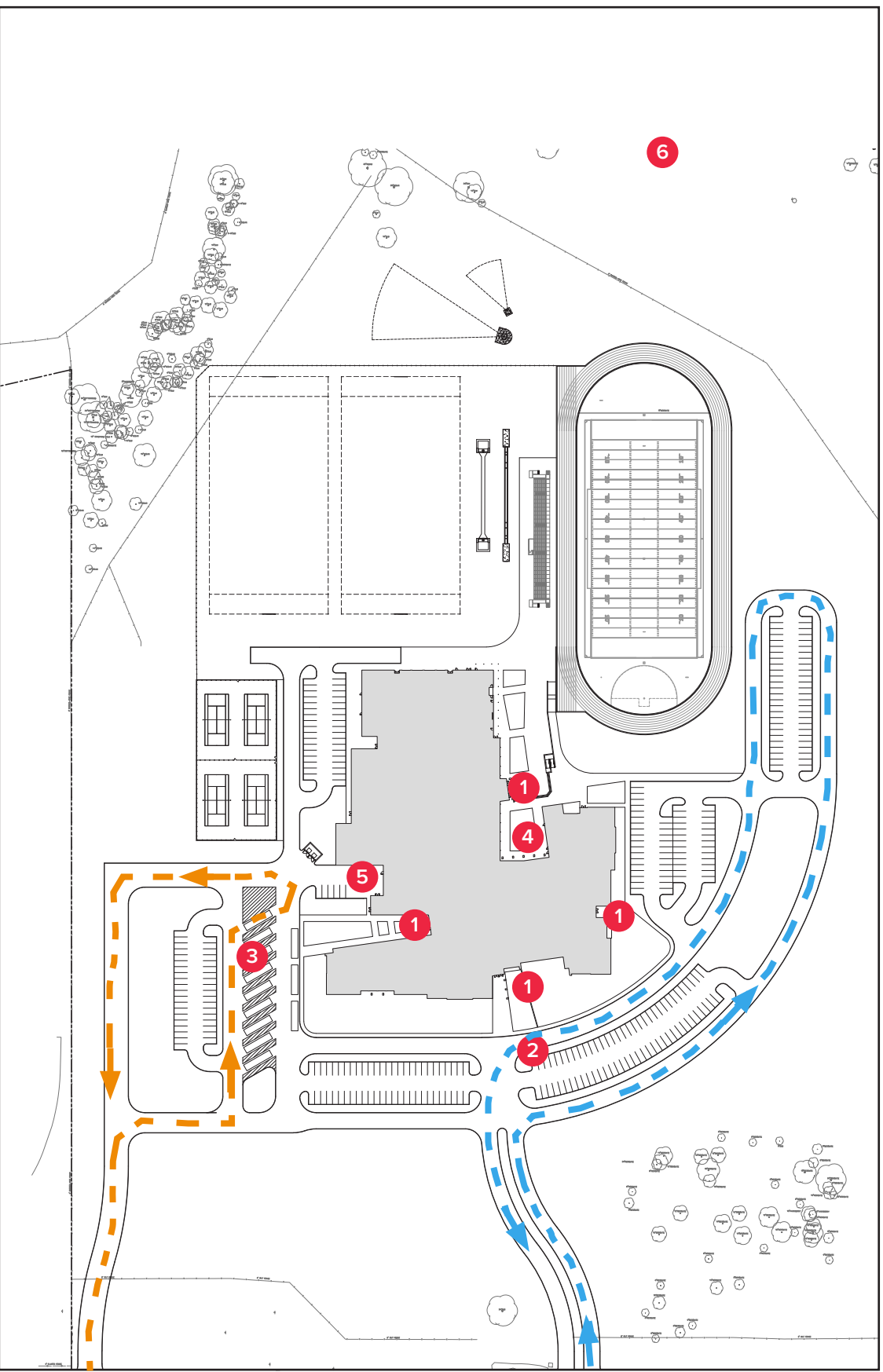
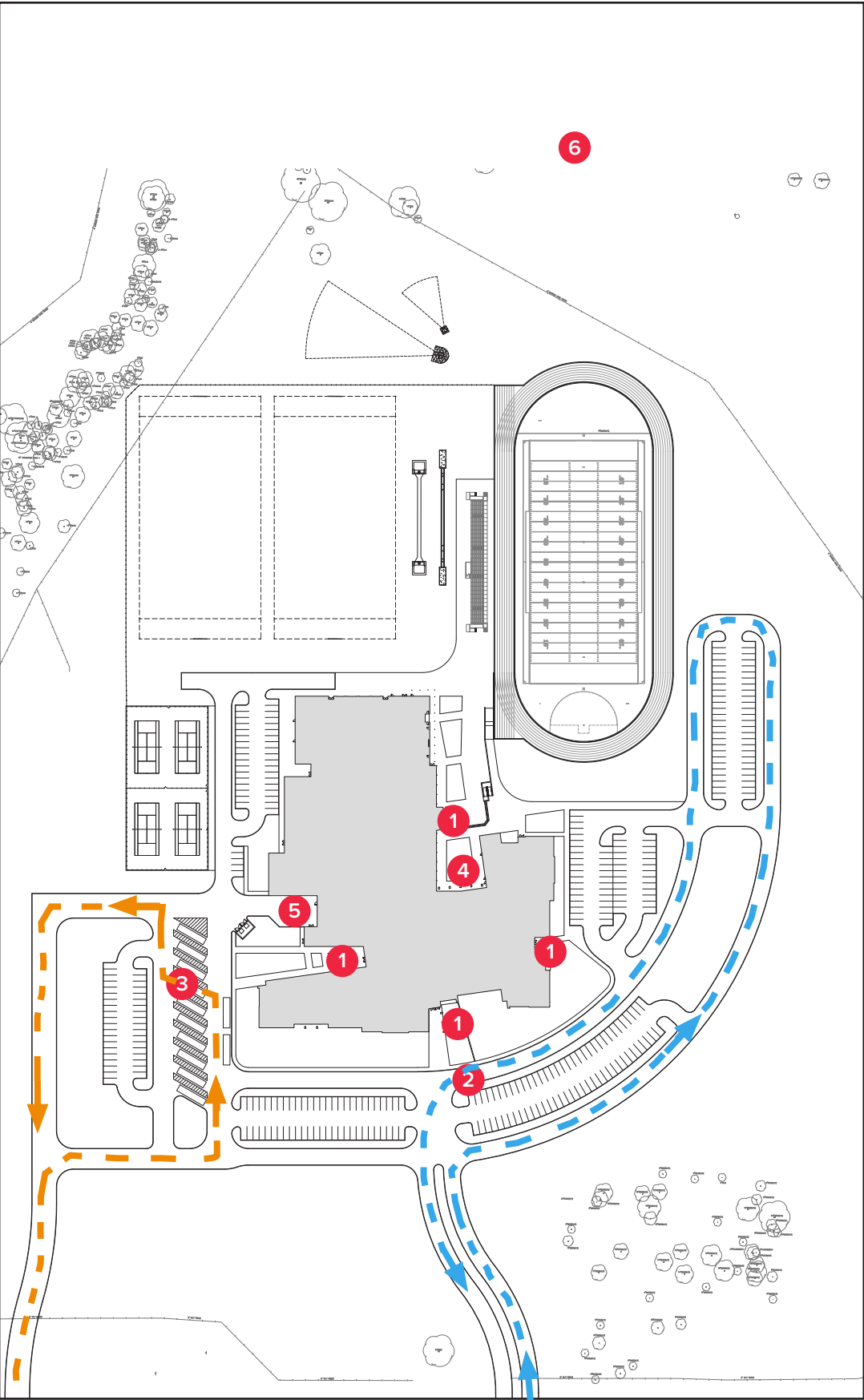
PROJECT #2 EXISTING MIDDLE SCHOOL RENOVATION & PROJECT #3 NEW MIDDLE SCHOOL | ALEDO INDEPENDENT SCHOOL DISTRICT

NOT FOR REGULATORY APPROVAL, PERMITTING OR CONSTRUCTION.

SHANNON BEARDEN TX - 23389

DESIGN DEVELOPMENT DEPARTMENTAL MEETINGS





**SITE PLAN UPDATES:**

- WORKING THROUGH DROP OFF ROUTES FOR BUS AND PARENTS
- UPDATED PARKING ADDITIONS FOOTPRINT
- ADDED CANOPIES AT DROP OFF FOR WEATHER CONDITIONS

- SITE PLAN KEY**
- 1 ENTRY
  - 2 PARENT DROP OFF/PICK UP
  - 3 BUS DROP OFF/PICK UP
  - 4 COURTYARD
  - 5 LOADING DOCK/ SERV DRIVE
  - 6 FLOOD PLAIN

- LINE TYPE LEGEND**
- Orange dashed arrow: Bus Drop-off
  - Blue dashed arrow: Parent Drop-off
  - Black dashed line: Property Line

**SITE PLAN STATISTICS**

**ACREAGE**

Building: 4.3 acres  
Playfields/Tennis Courts: 6.8 acres  
Drives: 7.5 acres  
Greenspace: 114 acres  
Total: 136 acres

**PARKING**

Staff/Visitor: 250  
Alternate parking (athletic): 52  
Handicap: 8  
Total: 302

**STACKING**

Parent Stacking: 2400 LF  
Bus Stacking: 1000 LF

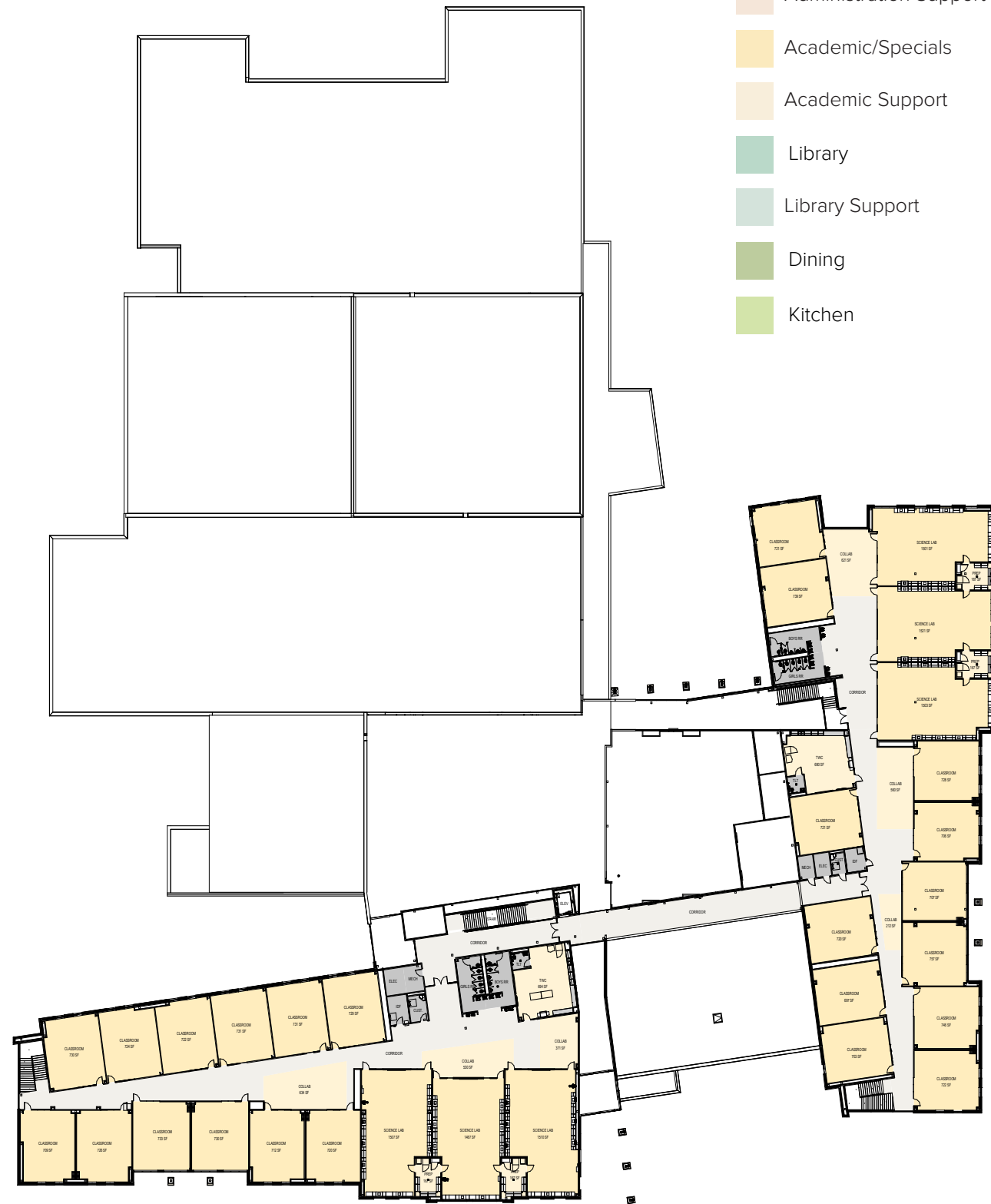
OPTION A

OPTION B





FIRST FLOOR



SECOND FLOOR

## COLOR LEGEND

- |   |   |
|---|---|
| <span style="display: inline-block; width: 15px; height: 15px; background-color: #f9a825; border: 1px solid black; margin-right: 5px;"></span> Administration         | <span style="display: inline-block; width: 15px; height: 15px; background-color: #4f81bd; border: 1px solid black; margin-right: 5px;"></span> Athletics                |
| <span style="display: inline-block; width: 15px; height: 15px; background-color: #f5d7a1; border: 1px solid black; margin-right: 5px;"></span> Administration Support | <span style="display: inline-block; width: 15px; height: 15px; background-color: #a1c4e8; border: 1px solid black; margin-right: 5px;"></span> Athletic Support         |
| <span style="display: inline-block; width: 15px; height: 15px; background-color: #fde025; border: 1px solid black; margin-right: 5px;"></span> Academic/Specials      | <span style="display: inline-block; width: 15px; height: 15px; background-color: #a1d9c4; border: 1px solid black; margin-right: 5px;"></span> Fine Arts                |
| <span style="display: inline-block; width: 15px; height: 15px; background-color: #f5e0a1; border: 1px solid black; margin-right: 5px;"></span> Academic Support       | <span style="display: inline-block; width: 15px; height: 15px; background-color: #c4e8f5; border: 1px solid black; margin-right: 5px;"></span> Fine Arts Support        |
| <span style="display: inline-block; width: 15px; height: 15px; background-color: #4db6ac; border: 1px solid black; margin-right: 5px;"></span> Library                | <span style="display: inline-block; width: 15px; height: 15px; background-color: #9575cd; border: 1px solid black; margin-right: 5px;"></span> Career/Tech              |
| <span style="display: inline-block; width: 15px; height: 15px; background-color: #a1d9c4; border: 1px solid black; margin-right: 5px;"></span> Library Support        | <span style="display: inline-block; width: 15px; height: 15px; background-color: #c5cae9; border: 1px solid black; margin-right: 5px;"></span> Career/Tech Support      |
| <span style="display: inline-block; width: 15px; height: 15px; background-color: #8bc34a; border: 1px solid black; margin-right: 5px;"></span> Dining                 | <span style="display: inline-block; width: 15px; height: 15px; background-color: #f5f5f5; border: 1px solid black; margin-right: 5px;"></span> Circulation              |
| <span style="display: inline-block; width: 15px; height: 15px; background-color: #c8e6c9; border: 1px solid black; margin-right: 5px;"></span> Kitchen                | <span style="display: inline-block; width: 15px; height: 15px; background-color: #bdbdbd; border: 1px solid black; margin-right: 5px;"></span> Restrooms/Support Spaces |
|   | <span style="display: inline-block; width: 15px; height: 15px; background-color: white; border: 1px solid black; margin-right: 5px;"></span> Courtyards                 |

## FLOOR PLAN UPDATES:

- THEATER CLASSROOM ADDED
- CLINIC ISOLATION ROOM ADDED
- KITCHEN REDUCED FROM FOUR TO THREE SERVING LINES
- ATHLETICS WEIGHT ROOM REDUCED TO ONE LARGE BOYS/ GIRLS SPACE
- ATHLETIC FOOTBALL LOCKERS STACKED VERSUS PREVIOUSLY SINGLE TIER
- ONGOING RESTROOM AND GLAZING STUDIES (LAYOUT)

**Huckabee**

PROJECT #2 EXISTING MIDDLE SCHOOL RENOVATION & PROJECT #3 NEW MIDDLE SCHOOL | ALEDO INDEPENDENT SCHOOL DISTRICT

NOT FOR REGULATORY APPROVAL, PERMITTING OR CONSTRUCTION.

SHANNON BEARDEN TX - 23389



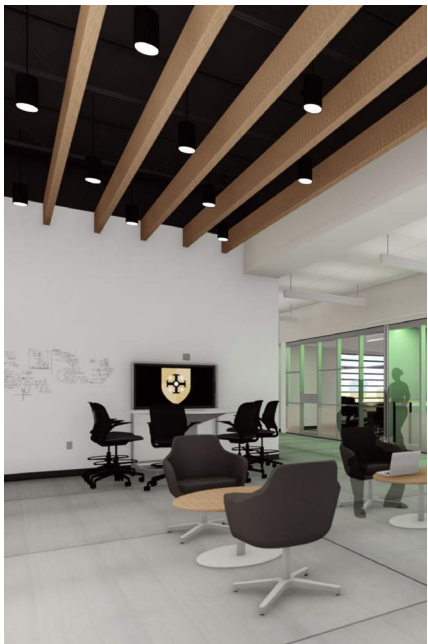
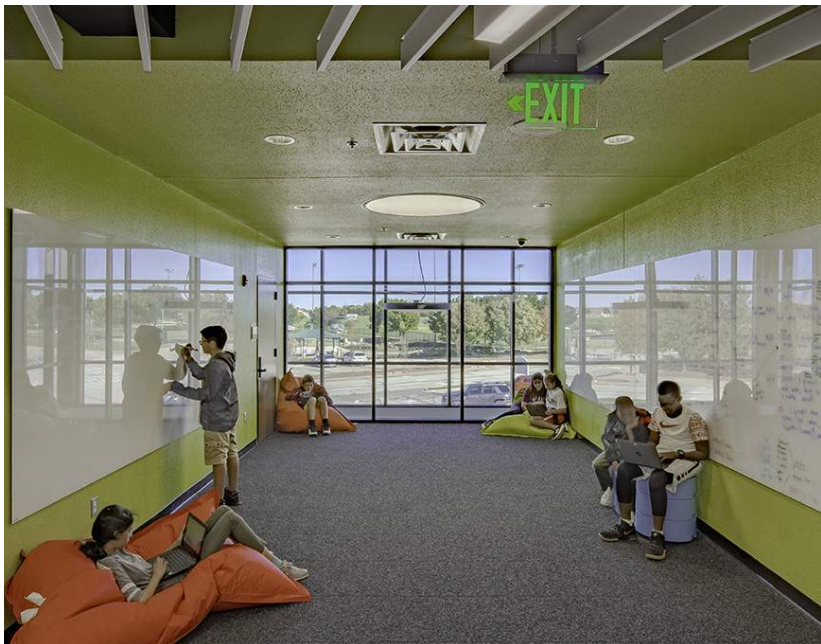
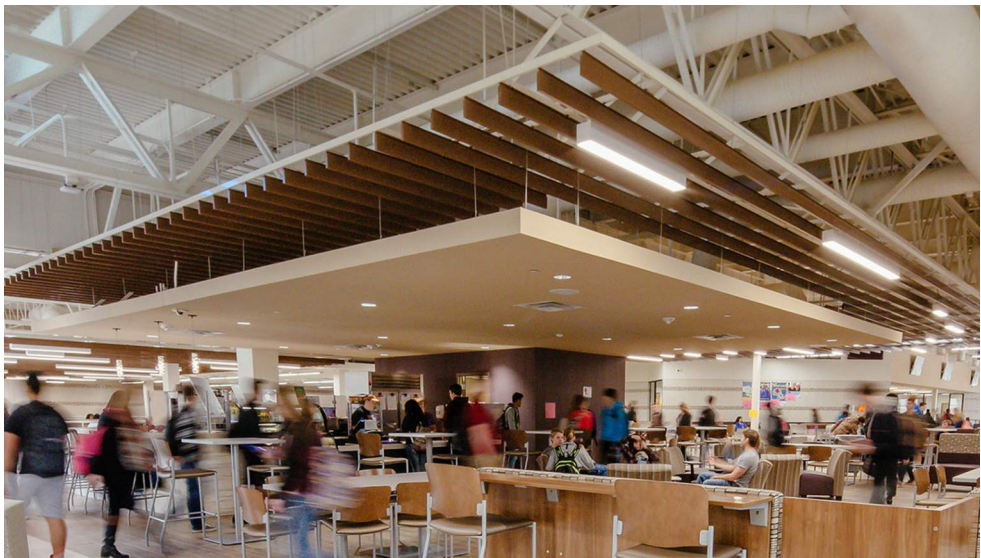
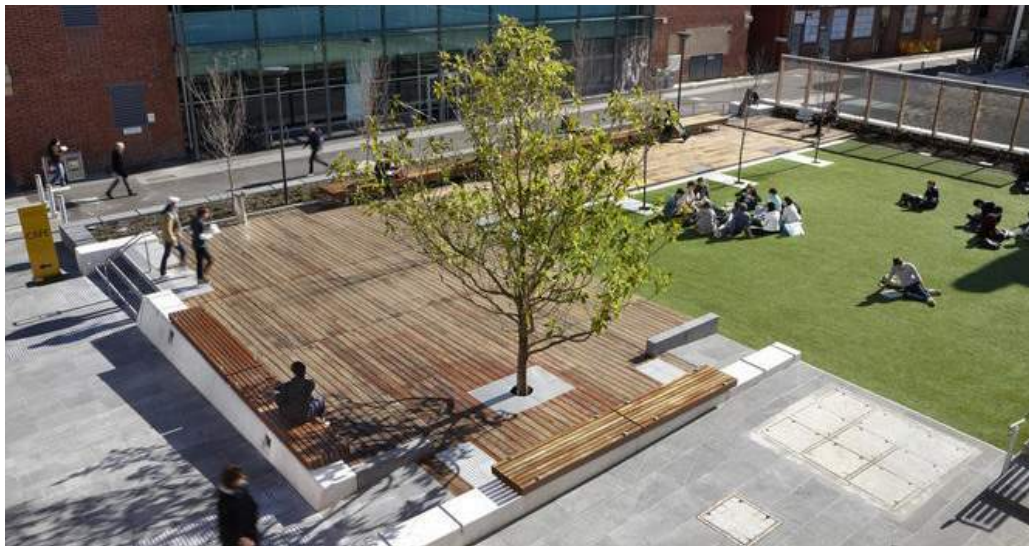


**Huckabee**

PROJECT #2 EXISTING MIDDLE SCHOOL RENOVATION & PROJECT #3 NEW MIDDLE SCHOOL | ALEDO INDEPENDENT SCHOOL DISTRICT

EXTERIOR PRECEDENT IMAGES (FROM COMMUNITY EVENT AND DESIGN SESSIONS)





**Huckabee**

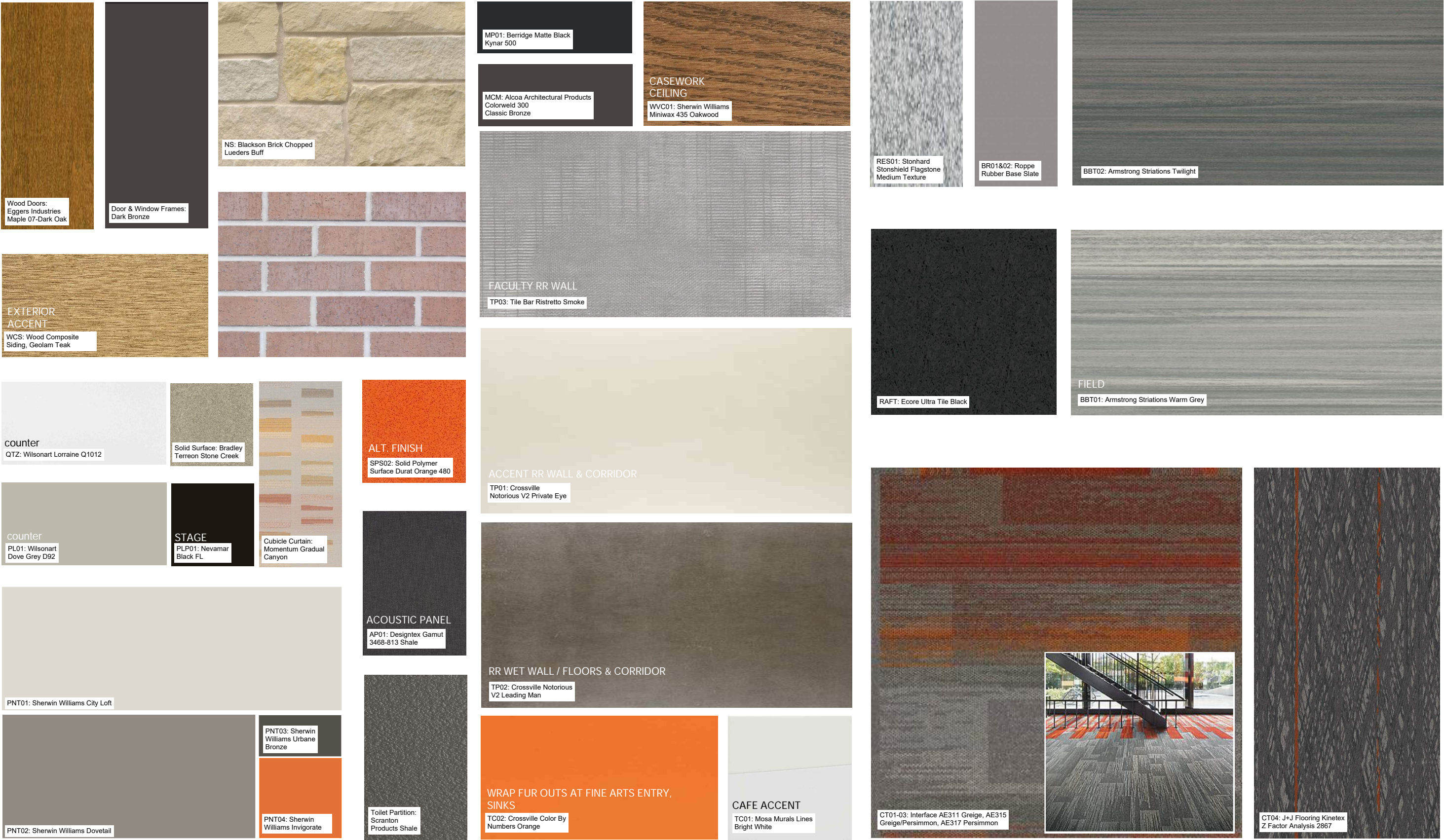
PROJECT #2 EXISTING MIDDLE SCHOOL RENOVATION & PROJECT #3 NEW MIDDLE SCHOOL | ALEDO INDEPENDENT SCHOOL DISTRICT

NOT FOR REGULATORY APPROVAL, PERMITTING OR CONSTRUCTION.

SHANNON BEARDEN TX - 23389

COLLABORATION & CAFETORIUM SPACE / PRECEDENT IMAGES

















LINK FOR PANORAMIC INTERIOR VIEWS: [HTTPS://HUCKABEEINC.VIEWIN360.CO/SHARE/COLLECTION/7LCCX?FS=1&VR=0&ZOOM=1&INITLOAD=0&THUMBS=1&CHROMELESS=1&LOGO=1](https://huckabeeinc.viewin360.co/share/collection/7LCCX?FS=1&VR=0&ZOOM=1&INITLOAD=0&THUMBS=1&CHROMELESS=1&LOGO=1)





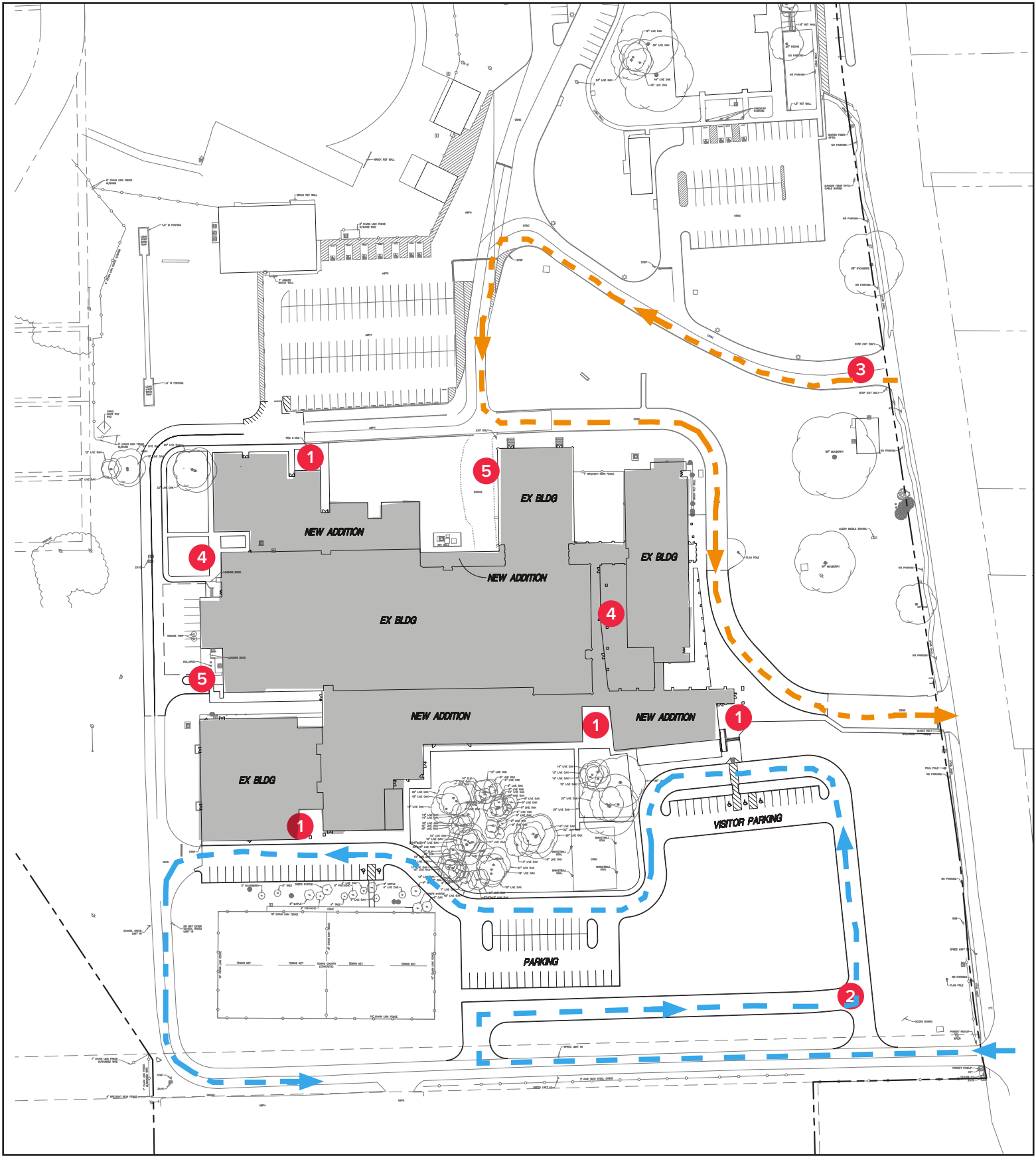
LINK FOR PANORAMIC INTERIOR VIEWS: [HTTPS://HUCKABEEINC.VIEWIN360.CO/SHARE/COLLECTION/7LCCX?FS=1&VR=0&ZOOM=1&INITLOAD=0&THUMBS=1&CHROMELESS=1&LOGO=1](https://huckabeeinc.viewin360.co/share/collection/7LCCX?FS=1&VR=0&ZOOM=1&INITLOAD=0&THUMBS=1&CHROMELESS=1&LOGO=1)





# ALEDO MIDDLE SCHOOL PROJECT #2





**SITE PLAN UPDATES:**

- WORKING THROUGH DROP OFF ROUTES FOR BUS AND PARENTS
- UPDATED PARKING ADDITIONS FOOTPRINT
- ADDED CANOPIES AT DROP OFF FOR WEATHER CONDITIONS

**SITE PLAN KEY**

- 1 ENTRY
- 2 PARENT DROP OFF/PICK UP
- 3 BUS DROP OFF/PICK UP
- 4 COURTYARD
- 5 LOADING DOCK/ SERV DRIVE
- 6 FLOOD PLAIN

**LINE TYPE LEGEND**

- Orange dashed arrow: Bus Drop-off
- Blue dashed arrow: Parent Drop-off
- Black dashed line: Property Line

**SITE PLAN STATISTICS**

**ACREAGE**

Building: 4.2 acres  
Drives: 3.1 acres  
Total: 30 acres

**PARKING**

Staff/Visitor: 324  
Handicap: 16  
Total: 340

**STACKING**

Parent Stacking: 3000 LF  
Bus Stacking: 1000 LF  
Total: 4000 LF





- COLOR LEGEND**
- Administration
  - Administration Support
  - Academic/Specials
  - Academic Support
  - Library
  - Library Support
  - Dining
  - Kitchen
  - Athletics
  - Athletic Support
  - Fine Arts
  - Fine Arts Support
  - Career/Tech
  - Career/Tech Support
  - Circulation
  - Restrooms/Support Spaces
  - Courtyards





## COLOR LEGEND

- Administration
- Administration Support
- Academic/Specials
- Academic Support
- Library
- Library Support
- Dining
- Kitchen
- Athletics
- Athletic Support
- Fine Arts
- Fine Arts Support
- Career/Tech
- Career/Tech Support
- Circulation
- Restrooms/Support Spaces
- Courtyards

### FLOOR PLAN UPDATES:

- EXISTING FOOTPRINT OF CLASSROOMS TO REMAIN, AS POSSIBLE
- DANCE MOVED TO EXISTING MPC STAGE
- ATHLETICS WEIGHT ROOM REDUCED TO ONE LARGE BOYS/GIRLS SPACE
- ATHLETIC FOOTBALL LOCKERS STACKED VERSUS PREVIOUSLY SINGLE TIER
- FLEX ROOMS MOVED TO INTERIOR OF EXISTING BUILDING
- CLASSROOM ADDED
- CLINIC ISOLATION ROOM ADDED



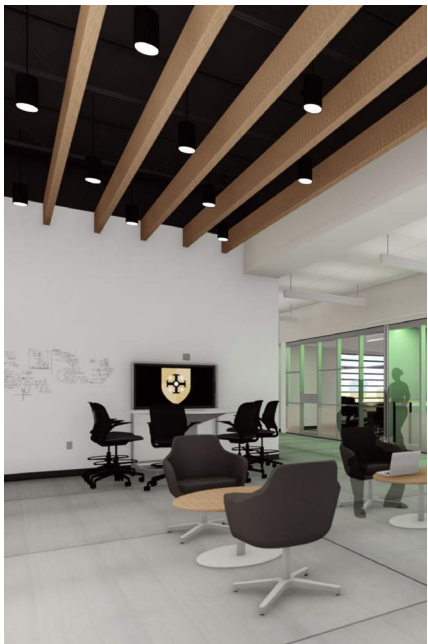
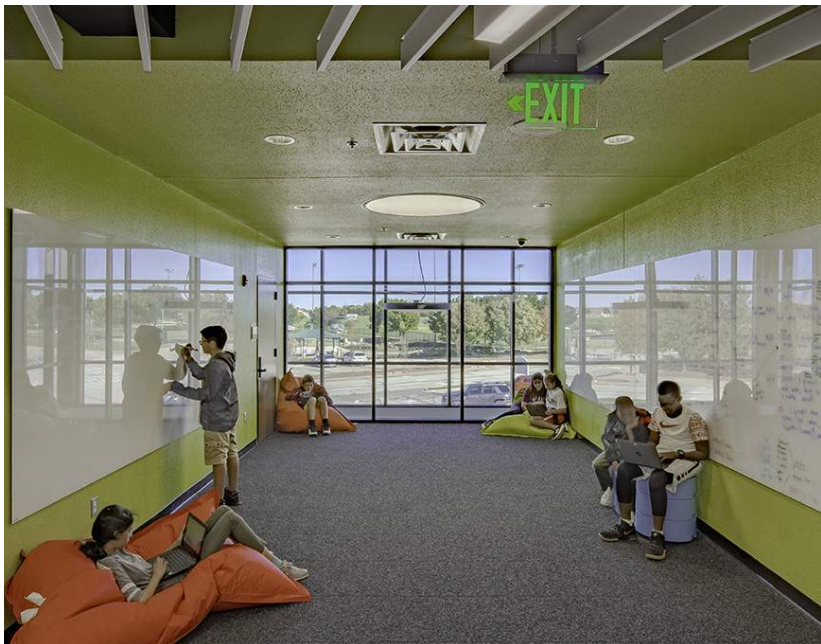
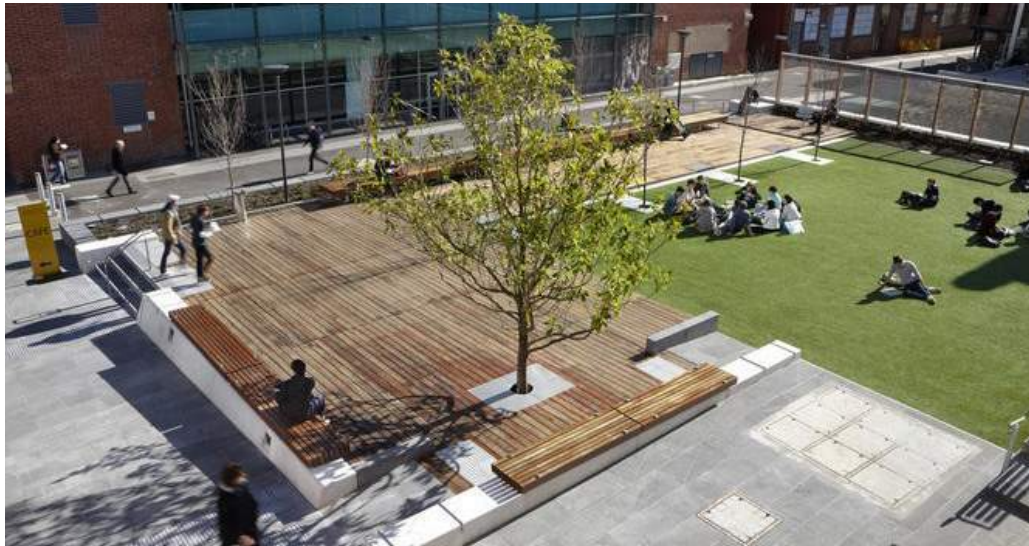


**Huckabee**

PROJECT #2 EXISTING MIDDLE SCHOOL RENOVATION & PROJECT #3 NEW MIDDLE SCHOOL | ALEDO INDEPENDENT SCHOOL DISTRICT

EXTERIOR PRECEDENT IMAGES (FROM COMMUNITY EVENT AND DESIGN SESSIONS)





**Huckabee**

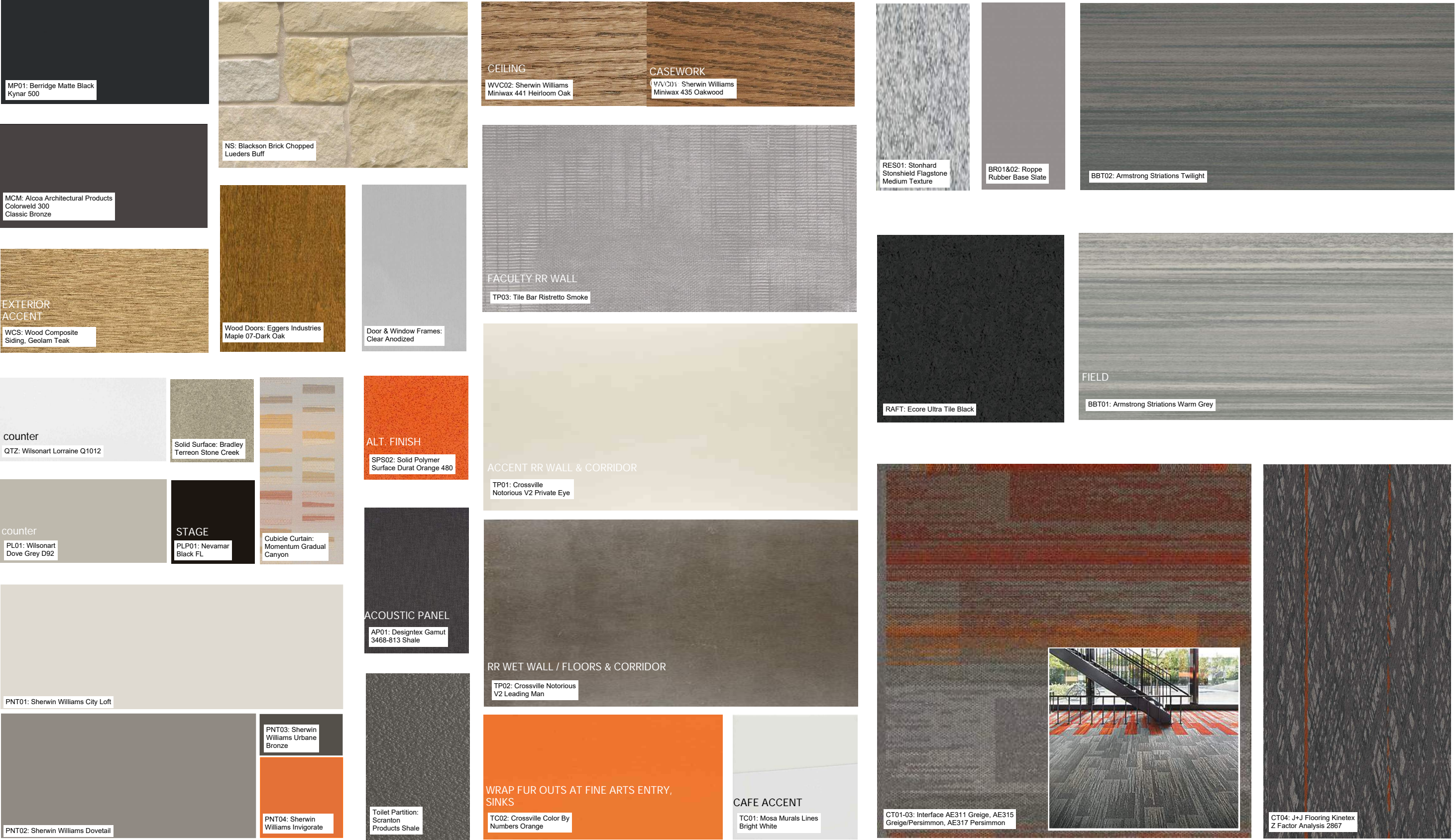
PROJECT #2 EXISTING MIDDLE SCHOOL RENOVATION & PROJECT #3 NEW MIDDLE SCHOOL | ALEDO INDEPENDENT SCHOOL DISTRICT

NOT FOR REGULATORY APPROVAL, PERMITTING OR CONSTRUCTION.

SHANNON BEARDEN TX - 23389

COLLABORATION & CAFETORIUM SPACE / PRECEDENT IMAGES









## PLASTIC LAMINATE PANEL



**Huckabee**

PROJECT #2 EXISTING MIDDLE SCHOOL RENOVATION & PROJECT #3 NEW MIDDLE SCHOOL | ALEDO INDEPENDENT SCHOOL DISTRICT

NOT FOR REGULATORY APPROVAL, PERMITTING OR CONSTRUCTION.

SHANNON BEARDEN TX - 23389

MATERIAL INSTALL & PRECEDENT IMAGES





## LIBRARY STUDY ROOMS



**Huckabee**

PROJECT #2 EXISTING MIDDLE SCHOOL RENOVATION & PROJECT #3 NEW MIDDLE SCHOOL | ALEDO INDEPENDENT SCHOOL DISTRICT

MATERIAL INSTALL & PRECEDENT IMAGES





## ORANGE & GRAY CARPET



**Huckabee**

PROJECT #2 EXISTING MIDDLE SCHOOL RENOVATION & PROJECT #3 NEW MIDDLE SCHOOL | ALEDO INDEPENDENT SCHOOL DISTRICT

MATERIAL INSTALL & PRECEDENT IMAGES













LINK FOR PANORAMIC INTERIOR VIEWS: [HTTPS://HUCKABEEINC.VIEWIN360.CO/SHARE/COLLECTION/7LCCX?FS=1&VR=0&ZOOM=1&INITLOAD=0&THUMBS=1&CHROMELESS=1&LOGO=1](https://huckabeeinc.viewin360.co/share/collection/7LCCX?FS=1&VR=0&ZOOM=1&INITLOAD=0&THUMBS=1&CHROMELESS=1&LOGO=1)

**Huckabee**

PROJECT #2 EXISTING MIDDLE SCHOOL RENOVATION & PROJECT #3 NEW MIDDLE SCHOOL | ALEDO INDEPENDENT SCHOOL DISTRICT

NOT FOR REGULATORY APPROVAL, PERMITTING OR CONSTRUCTION.

SHANNON BEARDEN TX - 23389

CAFETERIA - EXISTING MIDDLE SCHOOL

04





LINK FOR PANORAMIC INTERIOR VIEWS: [HTTPS://HUCKABEEINC.VIEWIN360.CO/SHARE/COLLECTION/7LCCX?FS=1&VR=0&ZOOM=1&INITLOAD=0&THUMBS=1&CHROMELESS=1&LOGO=1](https://huckabeeinc.viewin360.co/share/collection/7LCCX?FS=1&VR=0&ZOOM=1&INITLOAD=0&THUMBS=1&CHROMELESS=1&LOGO=1)





LINK FOR PANORAMIC INTERIOR VIEWS: [HTTPS://HUCKABEEINC.VIEWIN360.CO/SHARE/COLLECTION/7LCCX?FS=1&VR=0&ZOOM=1&INITLOAD=0&THUMBS=1&CHROMELESS=1&LOGO=1](https://huckabeeinc.viewin360.co/share/collection/7LCCX?FS=1&VR=0&ZOOM=1&INITLOAD=0&THUMBS=1&CHROMELESS=1&LOGO=1)









ALEDO INDEPENDENT SCHOOL DISTRICT

PROJECT #2 EXISTING MIDDLE SCHOOL RENOVATION & PROJECT#3 NEW MIDDLE SCHOOL

