

Bond Project No. 1 - Elementary School No. 6

Aledo Independent School District \ \ Aledo, Texas



Schematic Design Presentation

March 23, 2020



Design Charrette

Pre Design Charrette

Prior to the design Charrette on February 13th, PBK along with Aledo ISD’s Administrative Team spent over 4 weeks working diligently gathering crucial information to use as guidelines in the design process of the New Elementary No. 6. Groups such as the Curriculum and Instruction Department, Aledo ISD Police Department, Technology Department, Child Nutrition Department, Transportation Department, Maintenance / Facilities Department, along with Aledo ISD Elementary School Principals, Staff, Students and the Community all had an opportunity to talk to the design team and share and voice their concerns, goals, and expectations for the new elementary school to the design team and administration.



C&I Meeting - Jan. 15th,2020



Safety & Security Meeting - Jan. 15th,2020



Community Meeting - Feb. 6th,2020



Design Charrette - Day 1

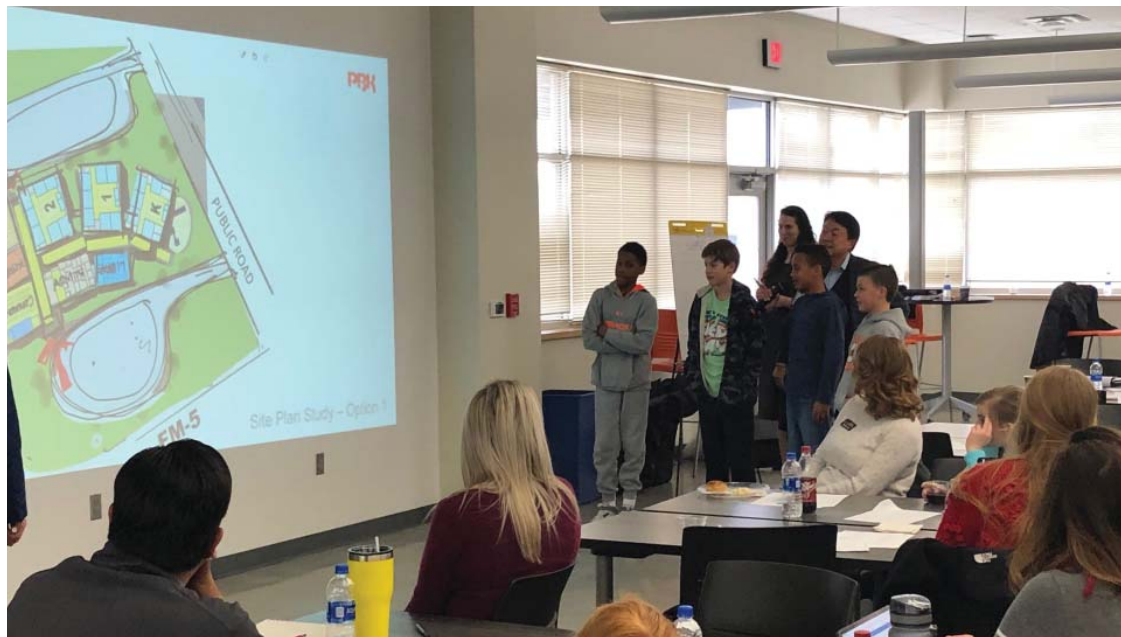
With the information gathered, PBK kicked off the Design Charrette by presenting their findings to the attendees, consisting of Bond Progress Committee Members, Aledo ISD Elementary School Principals, Elementary Staff and Student and the Aledo ISD Administrative Team. During this portion of the charrette the design team proceeded to gather more information from the group on their current district strengths that the group would like to see possibly implemented in to the new school design, district goals that would be flexible and enhance the teaching and learning environment in the academic spaces and express their vision and goals on having a school that fosters many of the district core values in a warm and inviting atmosphere.



Design Charrette

Design Charrette - Day 1 - Continued

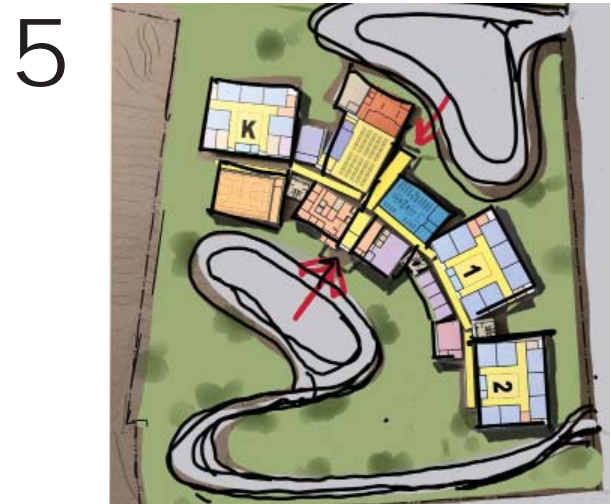
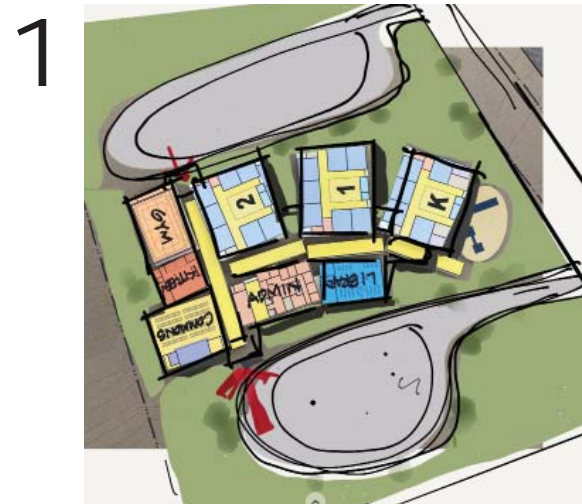
After vetting the program and existing site features of the Elementary School, the design team broke the attendees into four different teams to collaborate, develop and discuss possible solutions for the site and floor plans of the new Elementary School. From this workshop they created five conceptual plan studies, as well as five classroom pod design concepts. Some of the attending students assisted the design team in presenting these options to the Charrette Committee, and then discussed and critiqued on whether they meet the district’s vision, needs, and goals.



Charrette Workshop with the Charrette Committee

Presenting the Created Design Options to the Committee

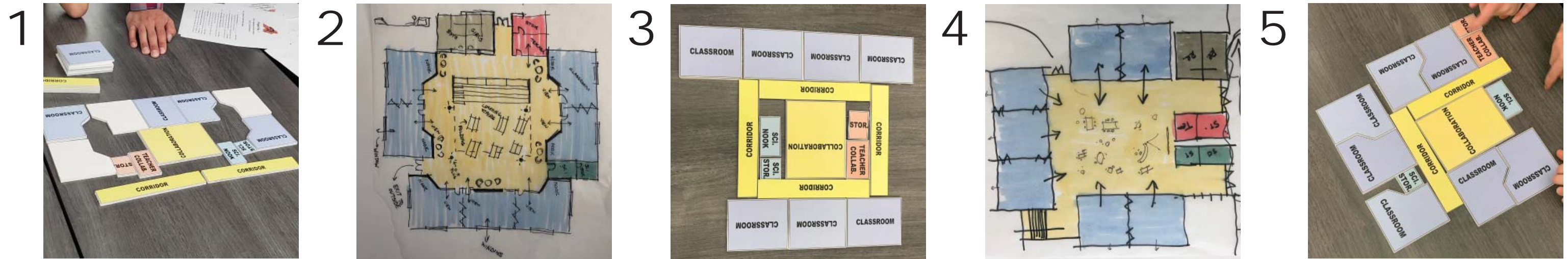
Out of the five conceptual Site Plan / Floor Plan studies two of them particularly stood out to the group, which the design team was then tasked to further develop for the next part of the design charrette. Option 2, a linear floor plan and Option 3, a courtyard inspired option, where the selected favorites of the committee.



Design Charrette

Design Charrette - Day 1 - Continued

The group selected, from five classroom pod studies, Option 2 with features of Option 4. The design team was tasked to further develop these studies for the next part of the design charrette.



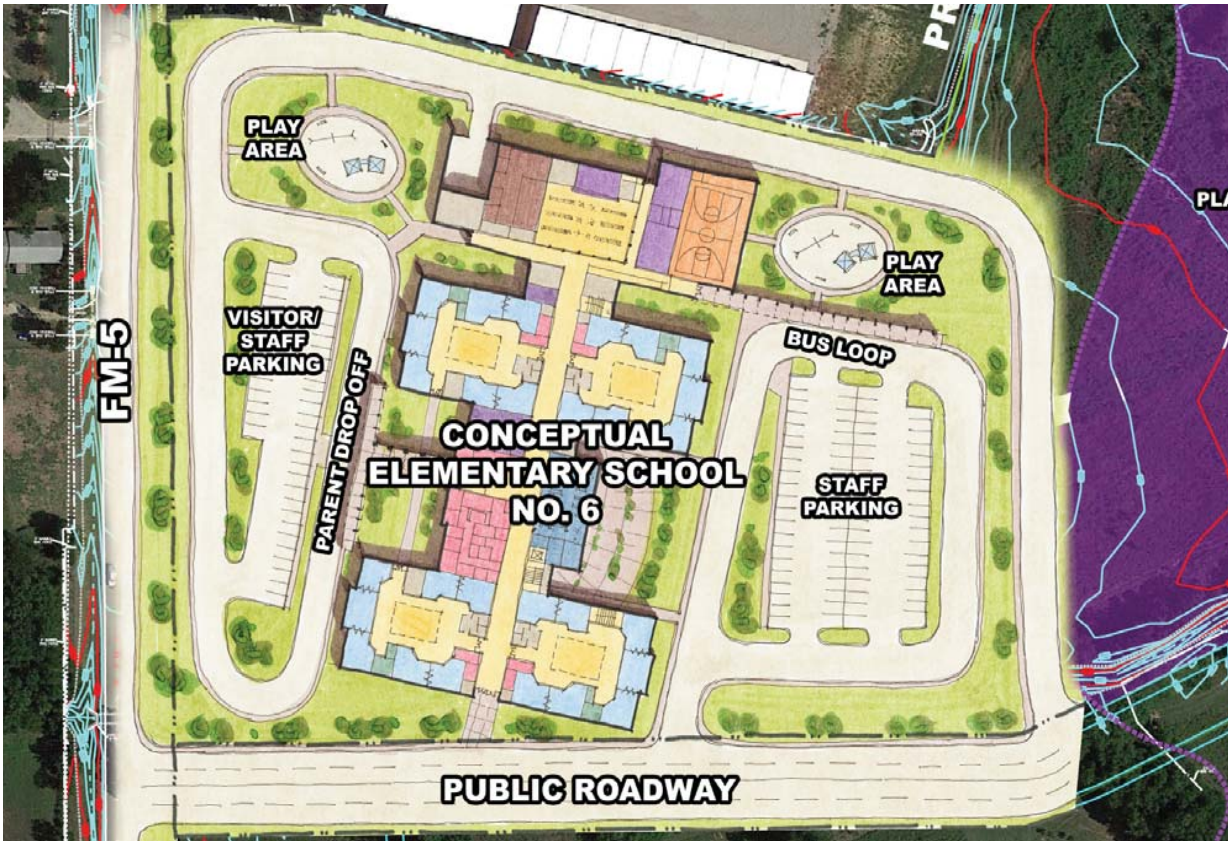
As Day 1 of the Charrette was ending the last area of information that the design team needed from the group was the vision for the exterior and interior look of the new Elementary School. Using a variety of spirit images that showed a multitude of possible concepts, the group then proceeded to place dots on images that indicated features or ideas that they believe helped create a warm and inviting environment that they believed that the new elementary school could have. Lastly, the design team followed up with the group to get their opinion on why they selected what they did to get a better understanding and consensus of the desired appearance for the building.



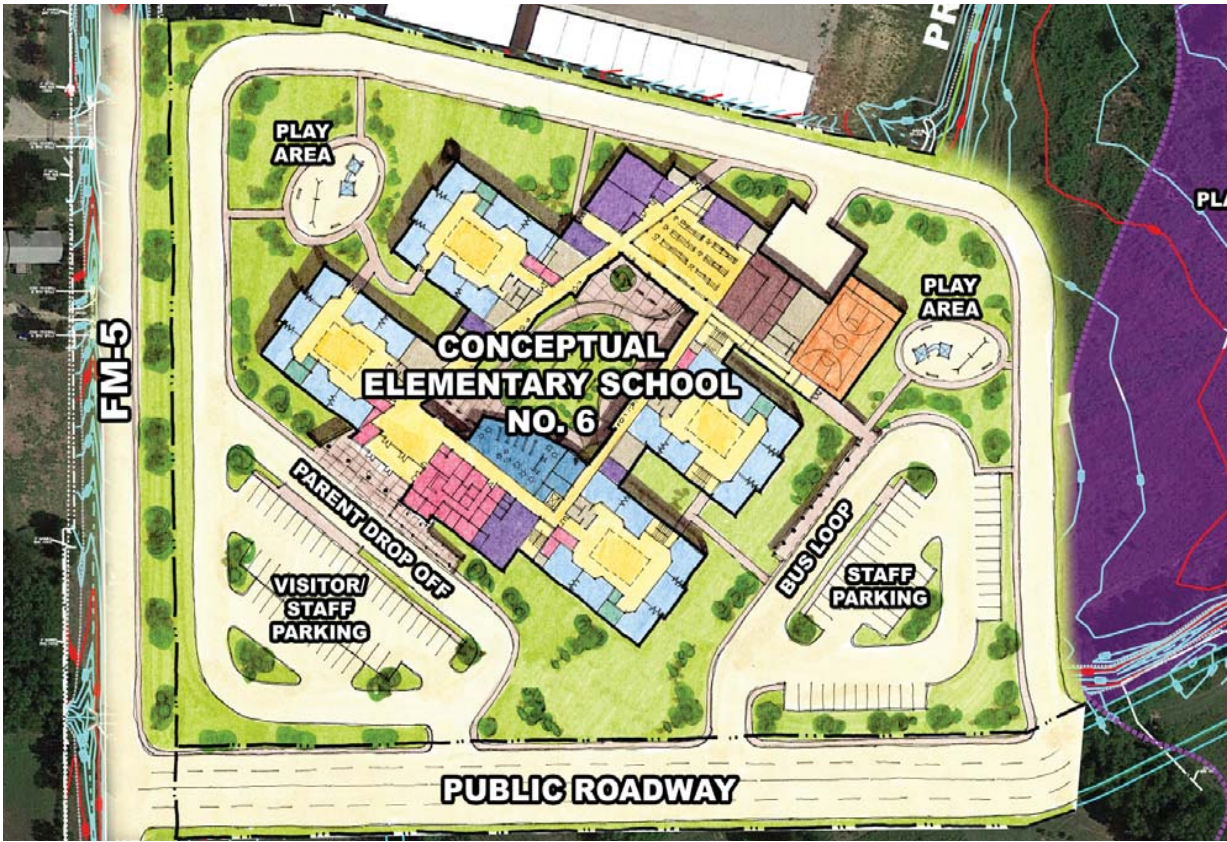
Design Charrette

Design Charrette - Day 2

On Friday, February 14th the PBK team returned to present their first round of refined conceptual drawings and images to the Charrette Committee. During this presentation PBK presented a more developed Site Plan and Floor Plan for Option 2 and Option 3 which included the preferred classroom pod design option.

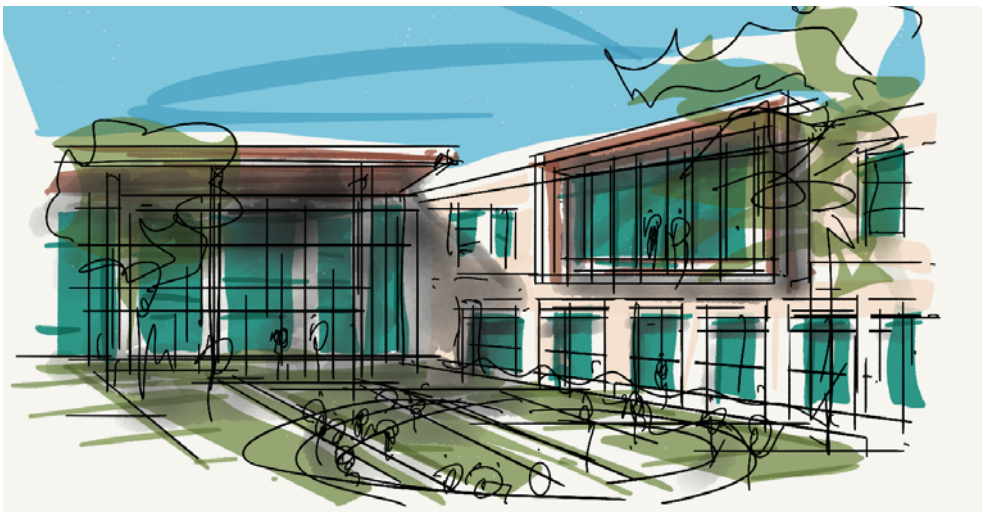
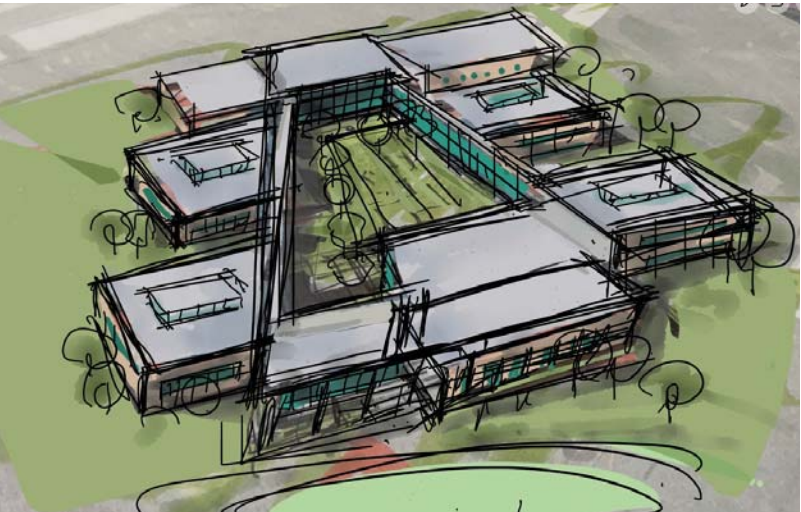


Conceptual - Option 2 Site and Floor Plan



Conceptual - Option 3 Site and Floor Plan

Conceptual exterior massing sketches, exterior entry renderings, and interior concepts were also presented to the Charrette Committee.



Design Charrette

Design Charrette - Day 2 - Continued

The design team also presented a few conceptual 3D renderings to further illustrate possible options for the look and feel of the proposed new Elementary School which included unique design features within the Media Center and Courtyard.



Conceptual Front Entry - Option 1



Conceptual Front Entry - Option 2



Conceptual Front Entry - Option 3



Conceptual Courtyard Rendering



Conceptual Media Center Rendering



After all the drawings were presented to the Committee the design team reviewed each of the options and again went through the process of vetting each of the options to see if meet the district’s needs, vision and expectations. The PBK team concluded the meeting by acknowledging that a deeper dive into the floor plan was needed.

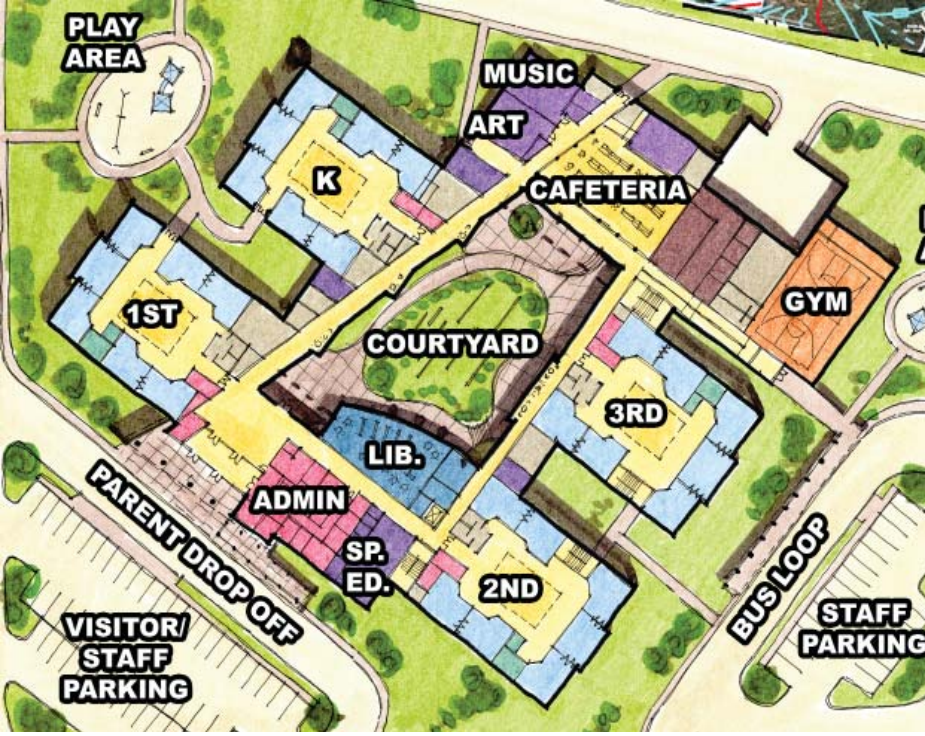
Design Charrette

Design Charrette - Day 3

On Monday February 17th the team from PBK returned to present thier next iteration of the floor plans and a deep dive into the classroom pods and courtyard. In doing so PBK also presented to the comittee, made up of the district’s Administrative team, an animation and Virtual Reality study of the Courtyard Option.



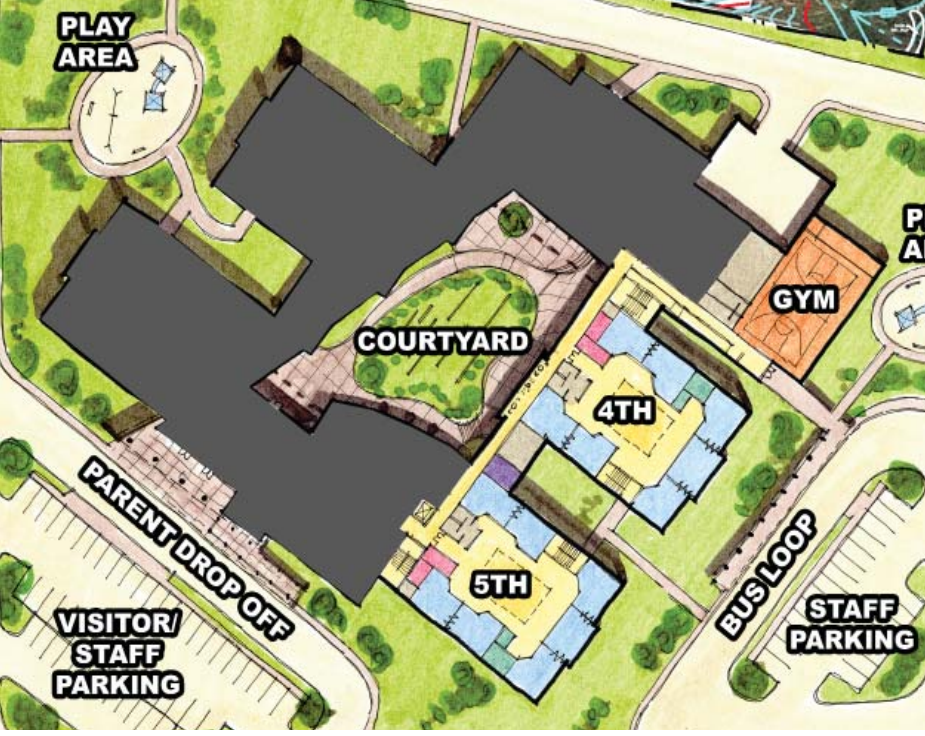
Conceptual - Option 2 - First Floor Plan



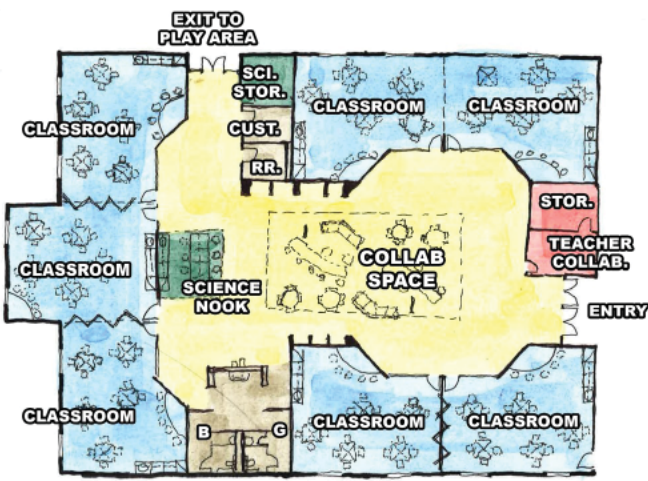
Conceptual - Option 3 - First Floor Plan



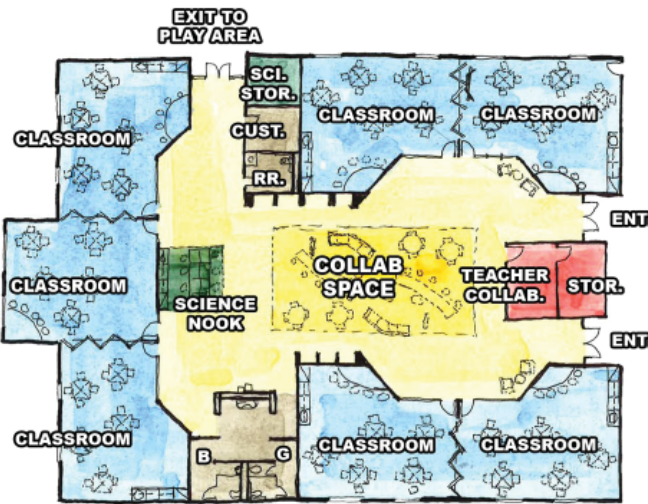
Conceptual - Option 2 - Ground Floor Plan



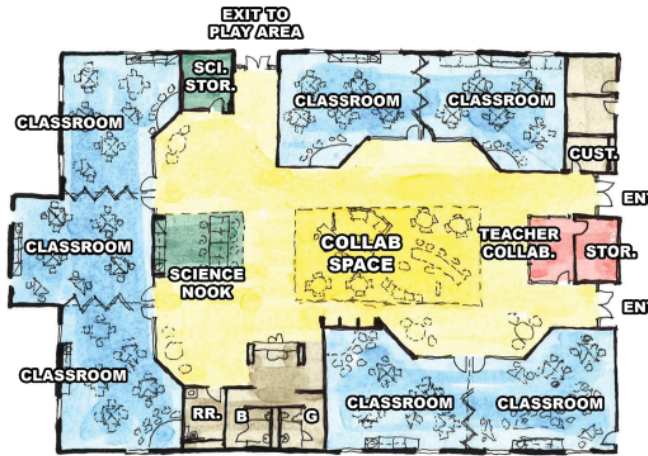
Conceptual - Option 3 - Ground Floor Plan



Classroom Pod
Option A



Classroom Pod
Option B



Classroom Pod
Option C

Design Charrette

Design Charrette - Day 3 - Continued

At the conclusion of Day 3 Design Charrette Presentation PBK offered the district an opportunity to receive additional feedback from the Elementary School Principals, Students, and Staff by doing a Road Show in which PBK would travel to each of the different Elementary Schools within the district and present the final charrette presentation to them, to ensure that they too had the opportunity to voice their opinion on whether the proposed design options exceeded their expectations in the design of the New Elementary School.

Aledo Elementary School No. 6 - Road Show

On Thursday, February 20th the team from PBK traveled to Coder Elementary School, McCall Elementary School, Vandagriff Elementary School, Stuard Elementary School, and Walsh Elementary School to present the final presentation along with the animation and Virtual Reality study. During these presentations we were able to gather some additional comments pertaining to student and staff circulation paths within each of the proposed options, access to natural daylighting and safety and security features such as the entry vestibule and the secured courtyard option that was highly favorable. Many also liked how the front entry provided a warm and inviting feel to the school with the proposed, wood look soffit and masonry / stone veneer at the entry of the school.



Design Charrette

Aledo Elementary School No. 6 - Road Show - Continued

Each presentation was then concluded with each school having the opportunity to relay their final comments to the district later so that a final decision on which option Aledo ISD would ultimately proceed with could be selected.



Thank You Aledo ISD

To all the Aledo ISD
Administrative Staff,
Principals, School Staff, Students,
and the Community. We greatly
appreciate this opportunity
and value everyone’s visions,
goals and feedback on the
development of the Schematic
Design of the New Elementary
School No. 6.



IMPORTANT DATES

Schematic Design-----	January 10 – March 13, 2020
Design Development Kickoff Meeting-----	March 17, 2020
Design Development Drawings to BTC-----	April 21, 2020
Design Development Board Approval-----	May 5, 2020
50% Construction Documents to Aledo and BTC-----	June 8, 2020
95% Construction Documents to Aledo and BTC-----	July 20, 2020
100% Construction Documents-----	July 30, 2020
BTC Presents GMP to Board (100% CD)-----	August 3, 2020
Construction-----	August 3, 2020 – August 1, 2021

Educational Specifications

Project #1 - 800 Student Capacity			
SPACE / FUNCTION	No. Ea.	Net Unit SF	Total Net SF
General Classrooms			
Kinder Classrooms	5	800	4,000
1st Grade Classrooms	7	800	5,600
2nd Grade Classrooms	7	750	5,250
3rd Grade Classrooms	7	750	5,250
4th Grade Classrooms	7	750	5,250
5th Grade Classrooms	7	750	5,250
Student Collaborative	6	1,200	7,200
Offices)Teacher Collab)	6	240	1,440
Science nook w/in / science classroom	6	200	1,200
Science storage	6	100	600
Level Book Room	3	150	450
Grade Level Storage	6	145	870
Special Programs Flex Classroom	2	400	800
General Classroom Area Sub-total			43,160
Special Education			
Life Skills (Functional Academics)	1	1,600	1,600
Toilet / Shower	2	60	120
Changing	1	60	60
Gifted and Talented	1	400	400
Dyslexia, ESL, OT/PT	3	400	1,200
Diagnostican Office	1	150	150
Special Education Area Sub-total			3,530
Fine Arts			
Art Studio	1	1,050	1,050
Kiln Room	1	200	200
Art Storage	1	130	130
Music Classroom	1	1,100	1,100
Music Storage	1	280	280
Fine Arts Area Sub-total			2,760

SPACE / FUNCTION	No. Ea.	Net Unit SF	Total Net SF	Notes
Physical Education				
Mult-Purpose Room	1	4,440	4,440	
Equipment Storage	1	470	470	
Coaches Office	1	100	100	
Physical Education Area Sub-total			5,010	
Administration				
Public Reception / Waiting Area / Secretaries	1	600	600	
Attendance / Registrar	1	145	145	
Principal's Office	1	240	240	
Assistant Principal's Office	1	180	180	
Secretary Office	1	140	140	
Counselor's Office	1	160	160	
Staging for Storage & Attendance Storage	1	100	100	
Work Room	1	150	150	
Vault / Records Room	1	180	180	
Restrooms	2	60	120	
Conference Room	1	240	240	
Police Officer	1	140	140	
In School Suspension Room	1	120	120	
Nurses Office	1	160	160	
Clinic Area including Isolation Area	1	350	350	
Clinic Restroom	1	80	80	
Central Workroom	1	740	740	
Administration Area Sub-total			3,845	
Media Center				
Library Reading / Instructional / Referance	1	3,000	3,000	
Library Stacks	1	440	440	
Libraian Office	1	160	160	
Work Room / AV Materials	1	300	300	
Media Center Area Sub-total			3,900	

SPACE / FUNCTION	No. Ea.	Net Unit SF	Total Net SF	Notes
Food Service				
Cafeteria	1	4,200	4,200	
Stage	1	805	805	
Storage / After School Storage	1	320	320	
Kitchen	1	1,665	1,665	
Serving Lines	1	1,200	1,200	
Media Center Area Sub-total			8,190	
Support				
Large Student Restrooms	8	240	1,920	
Small Student Restrooms	2	50	100	
Faculty Restrooms	6	50	300	
Custodial Central Housekeeping	1	150	150	
Custodial Closets	2	50	100	
Central Storage	1	200	200	
Stairs	3	300	900	
Elevator	1	120	120	
Support Area Sub-total			3,790	
Plant Services				
Large Mechancial Room	2	486	972	
Small Mechanical Room	3	146	438	
Larged Electrical Room	1	183	183	
Small Electrical Room	3	104	312	
IDF Room	3	80	240	
MDF Room	1	120	120	
Sprinkler Riser Room	1	250	250	
Mechancial Platform	2	800	1,600	
Maint /Custodial Sub-total			4,115	
Total Net Square Footage			78,300	
Circulation, Wall, Misc.			19,575	25% Factor
Total Gross Square Footage			97,875	

Project Overview

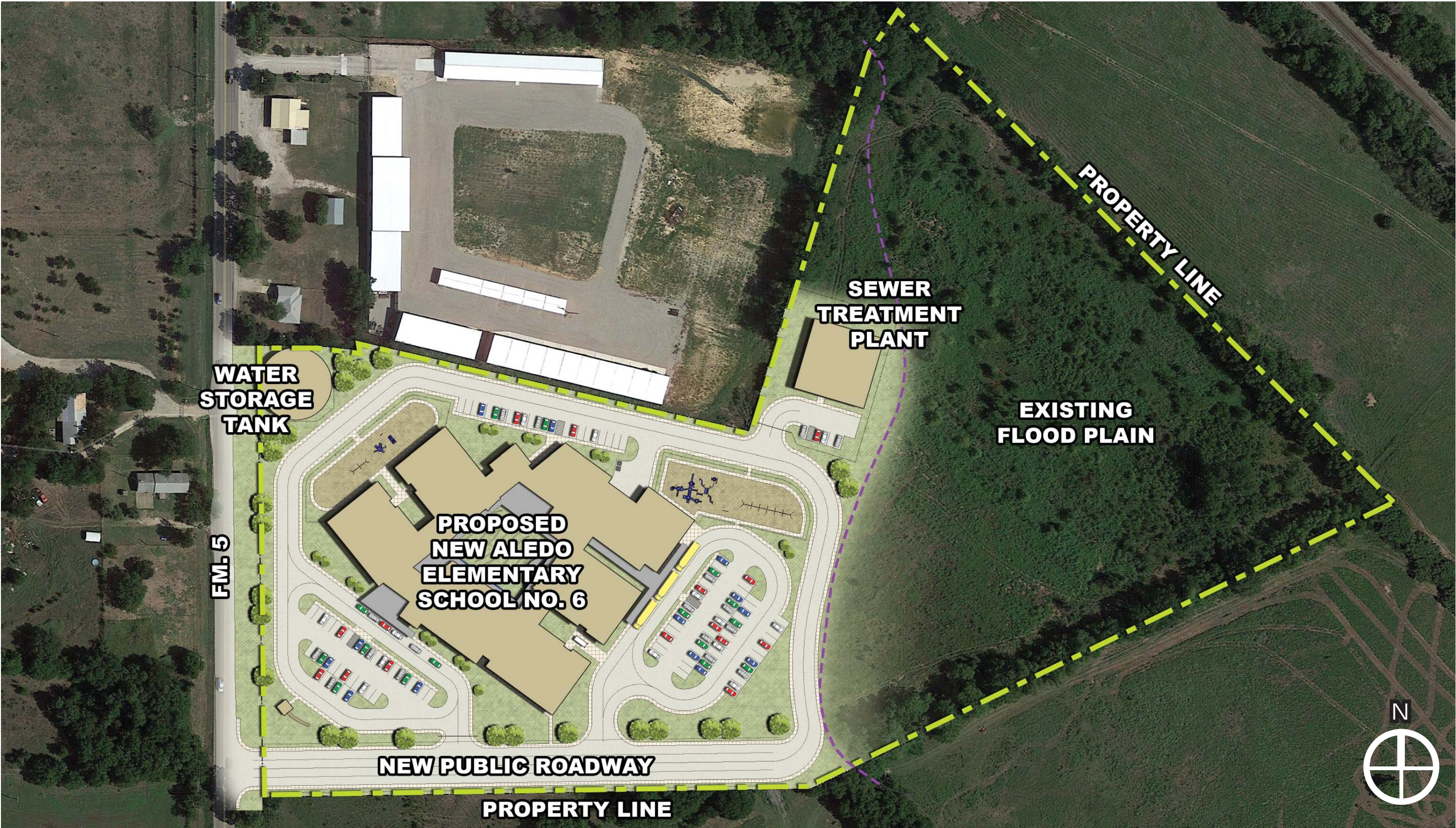
The Site

For Bond Project No. 1, this new Aledo ISD Elementary School No. 6 is to be sited off FM 5 on an approximately 20.9 Acres site within the City of Annetta. The facility will be designed for a capacity and core of 800 students within the grades K-5. The existing site conditions for the project will require a new public roadway to be built on the south side of the property that will be accessed from FM 5 with a stop light. All vehicular access to the campus will be gained from this new public roadway. In addition, the site will require several other infrastructure improvements including; lane widening of FM 5, a ground mounted water storage tank for both domestic and fire sprinkler use, a well water house, a sewer treatment plant, and study for a LOMAR to get a portion of the floodplain (located on the east side of the property) raised. In addition to these improvements, a parent and bus loop with independent ingress and egress allow for on-site stacking to reduce the number of cars stacking on both the new roadway and FM 5, as well as on-site parking for approximately 120 vehicles.

The Building

The new two-story elementary school is design and sited on the property to respond to the existing topography that slopes down from FM 5 to the east side of the site. The building design is centered around a completely secure central courtyard with access to lots of natural daylighting and to provide a clear circulation loop around the campus with enhanced visibility to the different areas located around it. Collaborative and flexible classroom “pods” are arranged around the perimeter of the courtyard to provide each of the academic pods easy access to the courtyard while maintaining a layered approach to campus security and provide individualized secured zones for the student from the rest of the building. With the use of local and natural materials, a warm and inviting main entrance to the building is to be located at the southwest corner of the site directly off the parent drop off. The main entry with visibility from FM 5 and the new public roadway will also include a secured vestibule with lockdown capabilities located at the front administrative area. The Media Center is located at the heart of the campus across from the main administration area, to again allow equal access for all students. This space with direct access to the courtyard and natural light will be another technology rich environment to provide students opportunities to exert student choice through a variety of creative learning tools. The cafetorium space is positioned in the plan on the north side to separate it from the educational spaces and for the flexibility of afterhours use, yet still allow equal access to all students. The cafetorium will also have direct connection to the courtyard for outdoor dining and natural light. The gymnasium, located on the Northeast corner of the building, will also serve as the tornado shelter for the campus and has direct connection to the, upper level play area, east side parking lot and bus loop.

COMPOSITE SITE PLAN



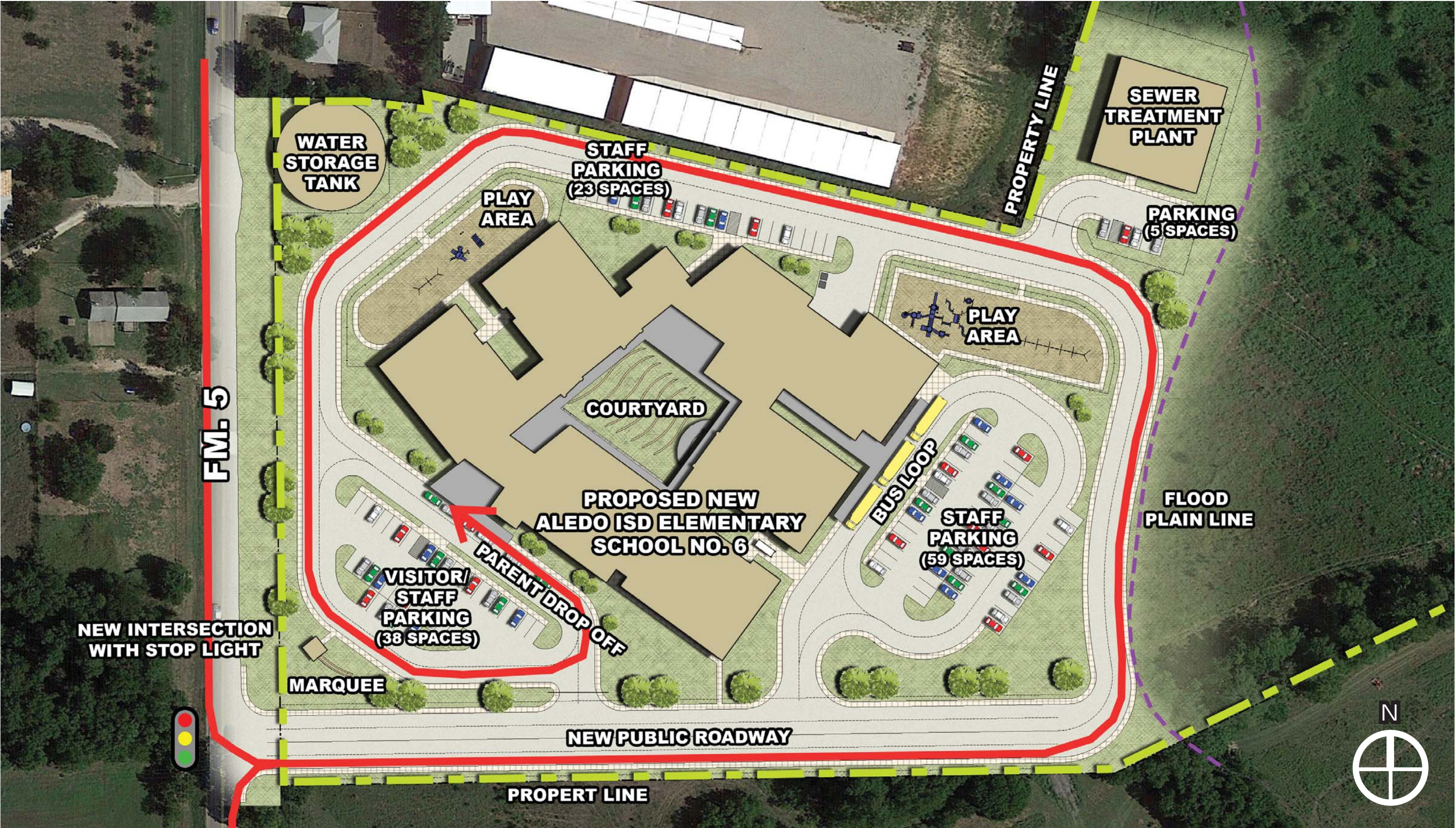
ENLARGED SITE PLAN



ENLARGED SITE PLAN



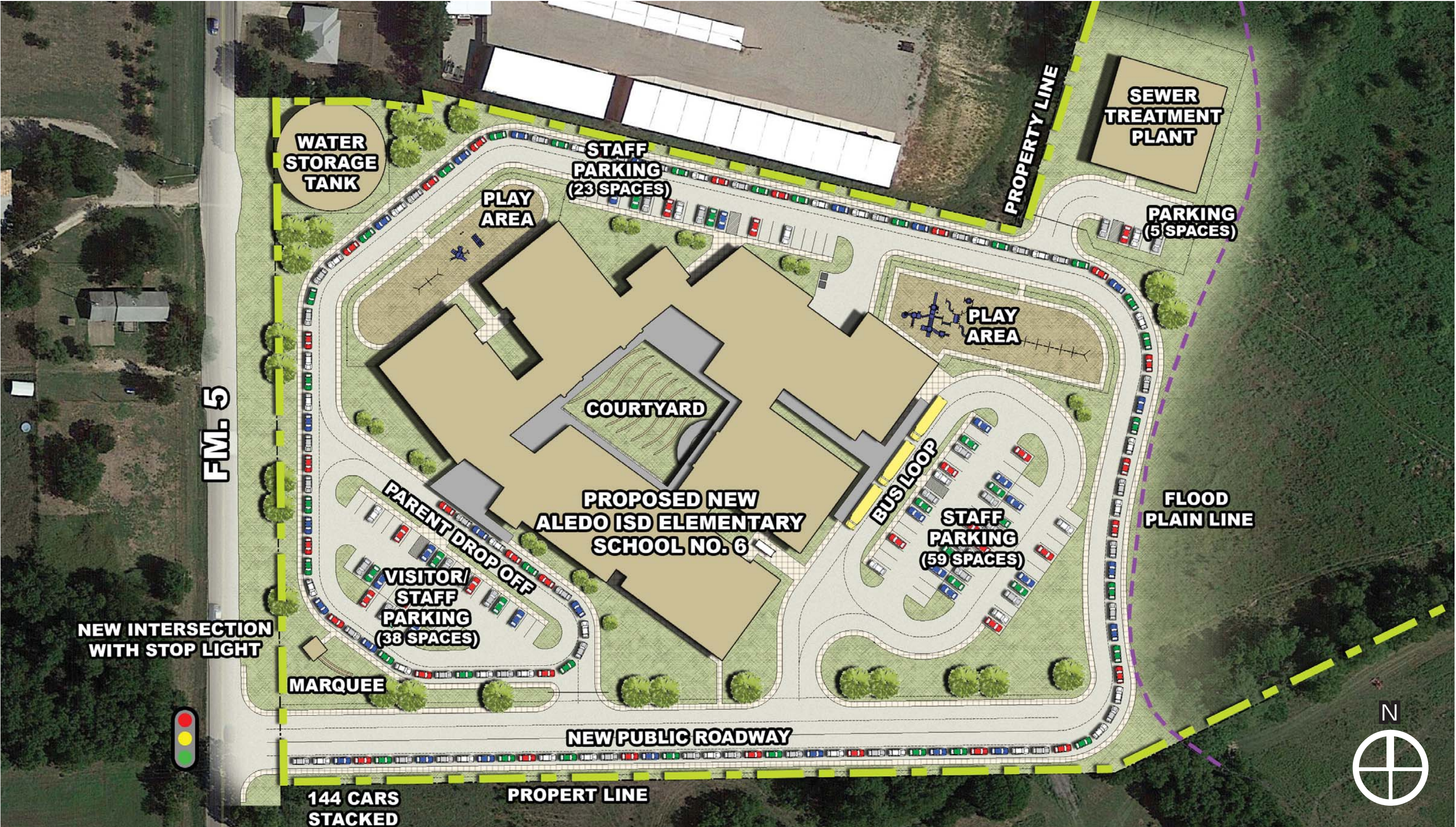
ENLARGED SITE PLAN

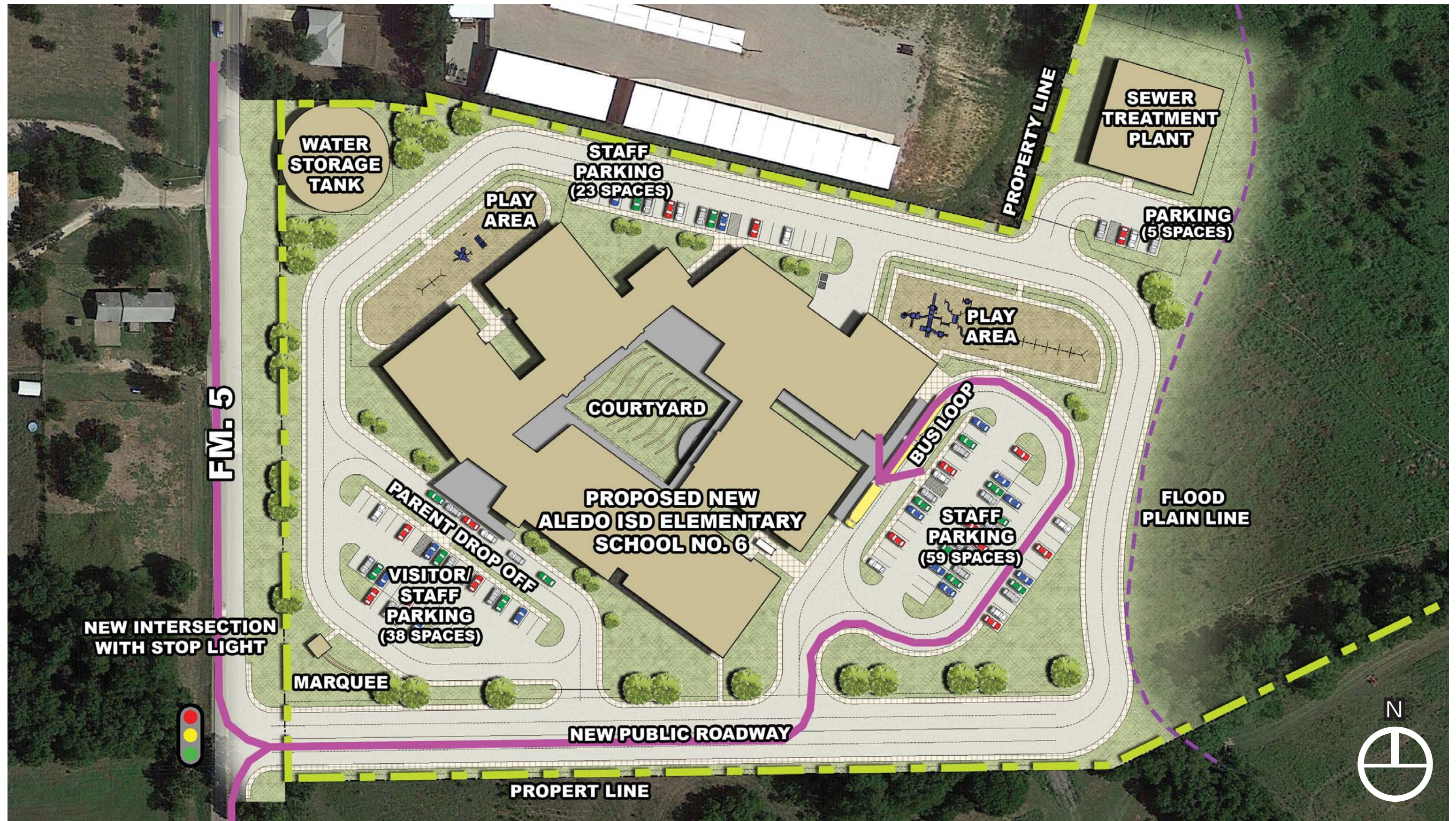


ENLARGED SITE PLAN

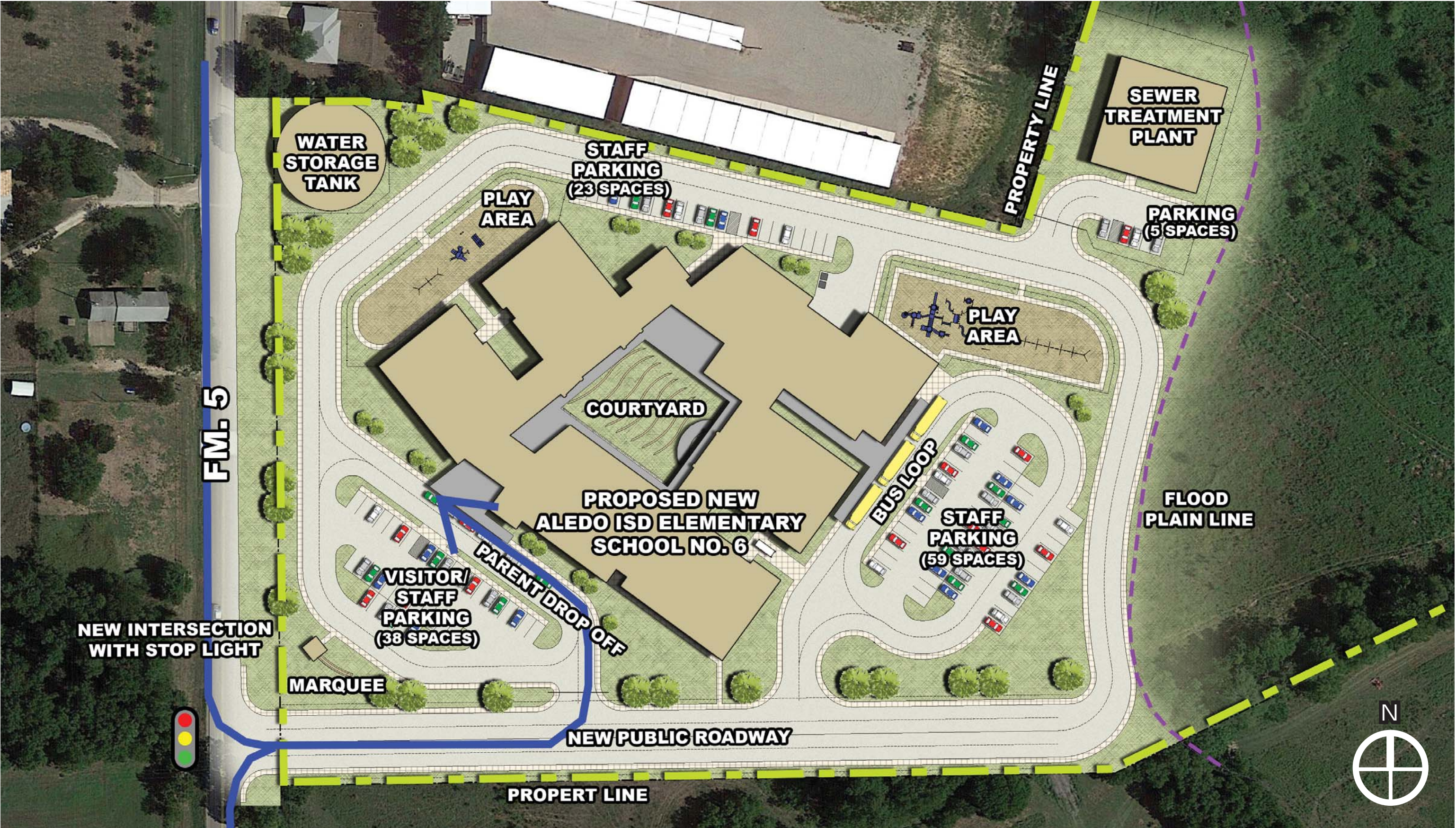


ENLARGED SITE PLAN





ENLARGED SITE PLAN

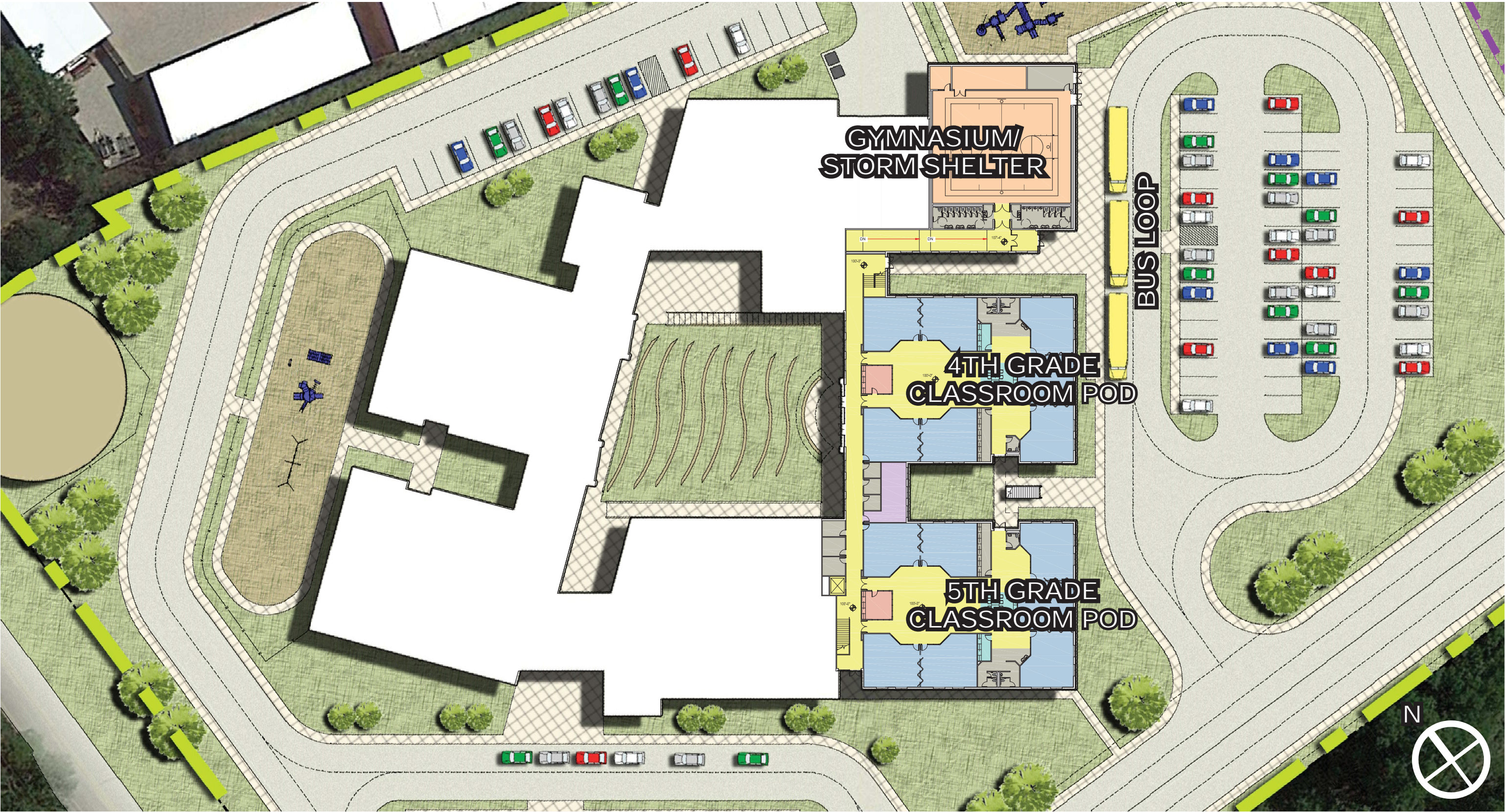


Architectural Drawings

COMPOSITE FIRST FLOOR PLAN



COMPOSITE GROUND FLOOR PLAN



ENLARGED FIRST FLOOR PLAN - ADMINISTRATION, MEDIA CENTER & SPECIAL EDUCATION



ENLARGED FIRST FLOOR PLAN - FIRST GRADE POD



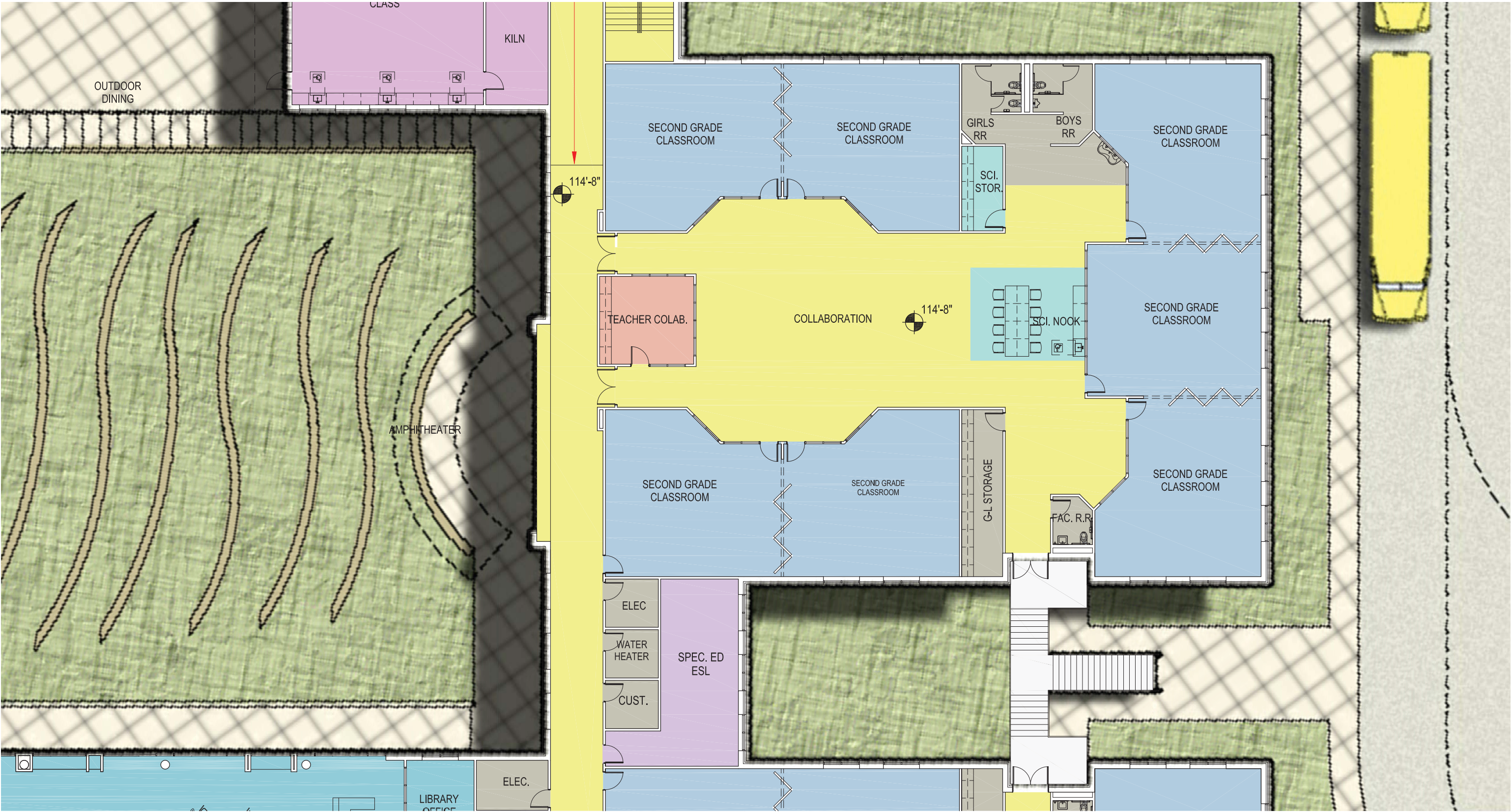
ENLARGED FIRST FLOOR PLAN - KINDERGARTEN POD



ENLARGED FIRST FLOOR PLAN - MUSIC, ART, CAFETERIA & KITCHEN



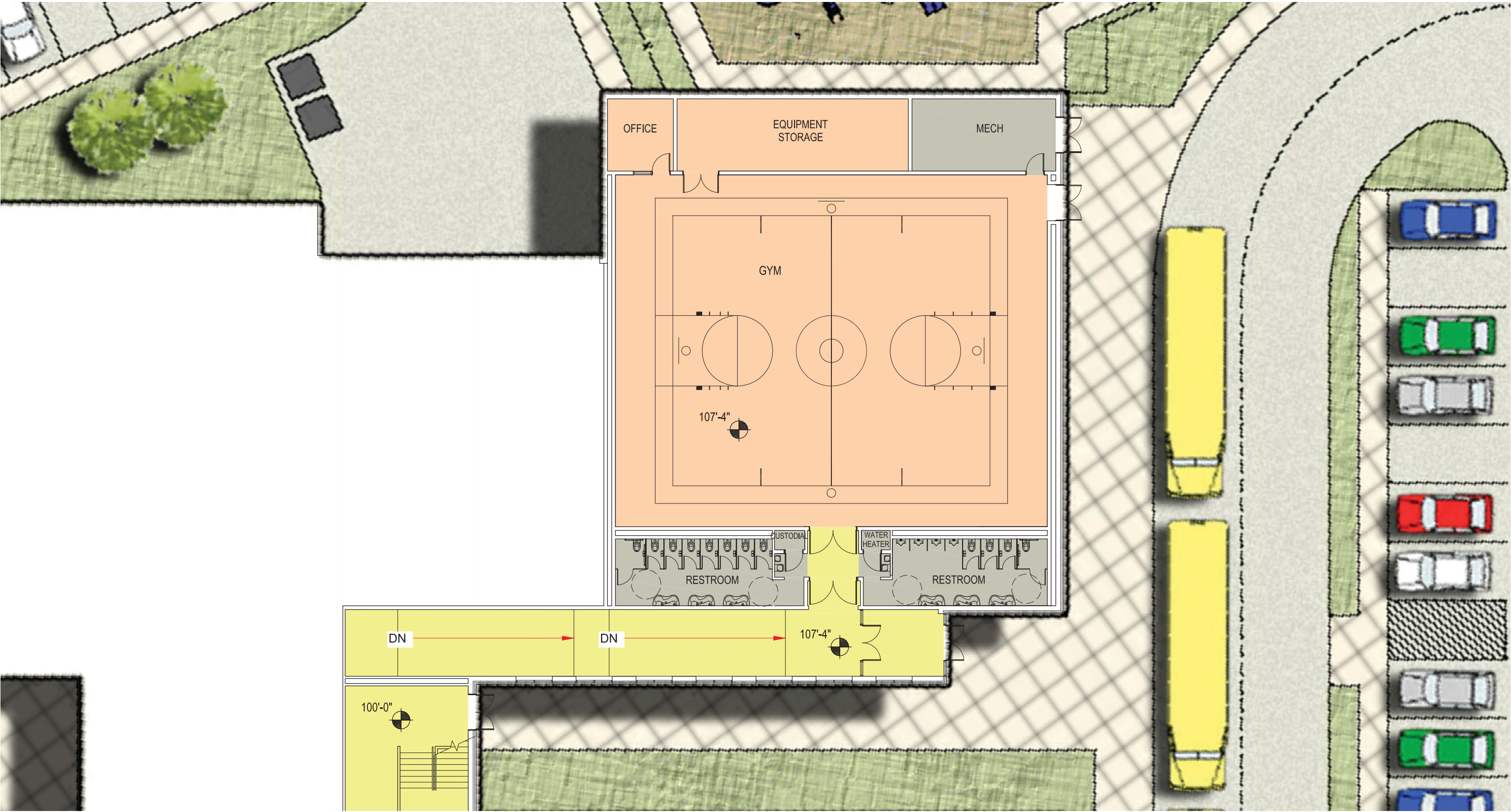
ENLARGED FIRST FLOOR PLAN - SECOND GRADE POD



ENLARGED FIRST FLOOR PLAN - THIRD GRADE POD



ENLARGED GROUND FLOOR PLAN - GYMNASIUM & STORM SHELTER



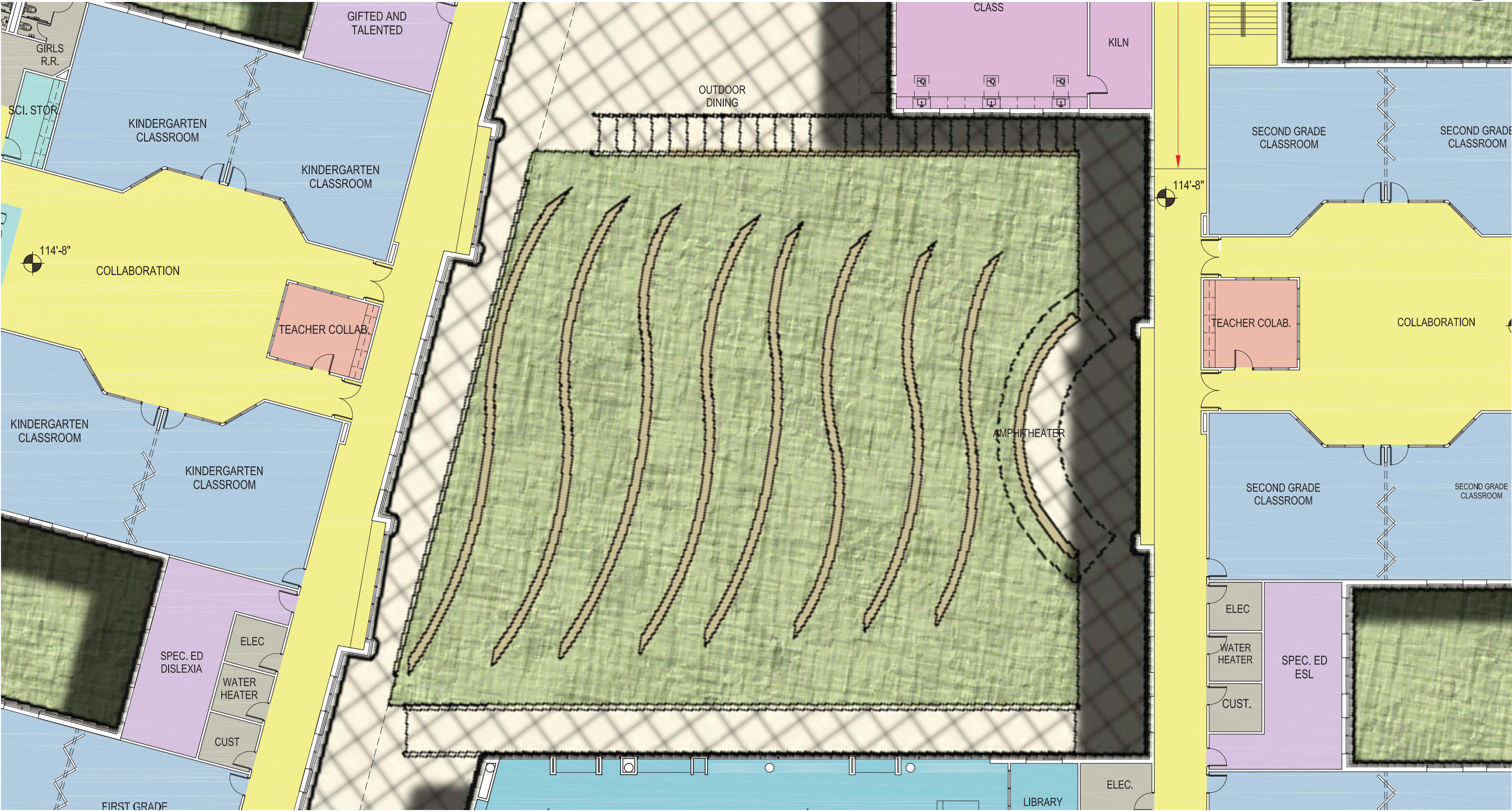
ENLARGED GROUND FLOOR PLAN - FOURTH GRADE POD



ENLARGED GROUND FLOOR PLAN - FIFTH GRADE POD



ENLARGED GROUND FLOOR PLAN - COURTYARD



BIRD’S EYE VIEW



OVERALL FRONT FACADE



FRONT ENTRY



COURTYARD - VIEW FROM LIBRARY



COURTYARD - VIEW FROM CAFETERIA







TYPICAL CLASSROOM POD - SCIENCE NOOK



TYPICAL CLASSROOM POD - COLLABORATION AREA



TYPICAL CLASSROOM POD - VIEW TOWARDS POD ENTRY

