

Bearcat Growth Committee



STATE OF THE DISTRICT

January 24, 2019 Meeting

Aledo ISD Snapshot



- 6,100 Students
- 733 Staff
- 10 Campuses
- 130 Square Miles
- 8 Municipalities
in District Boundaries
- 2 Counties



Campuses & Grades Served



Five Elementary Campuses

(Kindergarten – 5th Grade)

Coder

McCall

Stuard

Vandagriff

Walsh

McAnally Intermediate School

(6th Grade)

Aledo Middle School

(7th-8th Grade)

Daniel Ninth Grade Campus

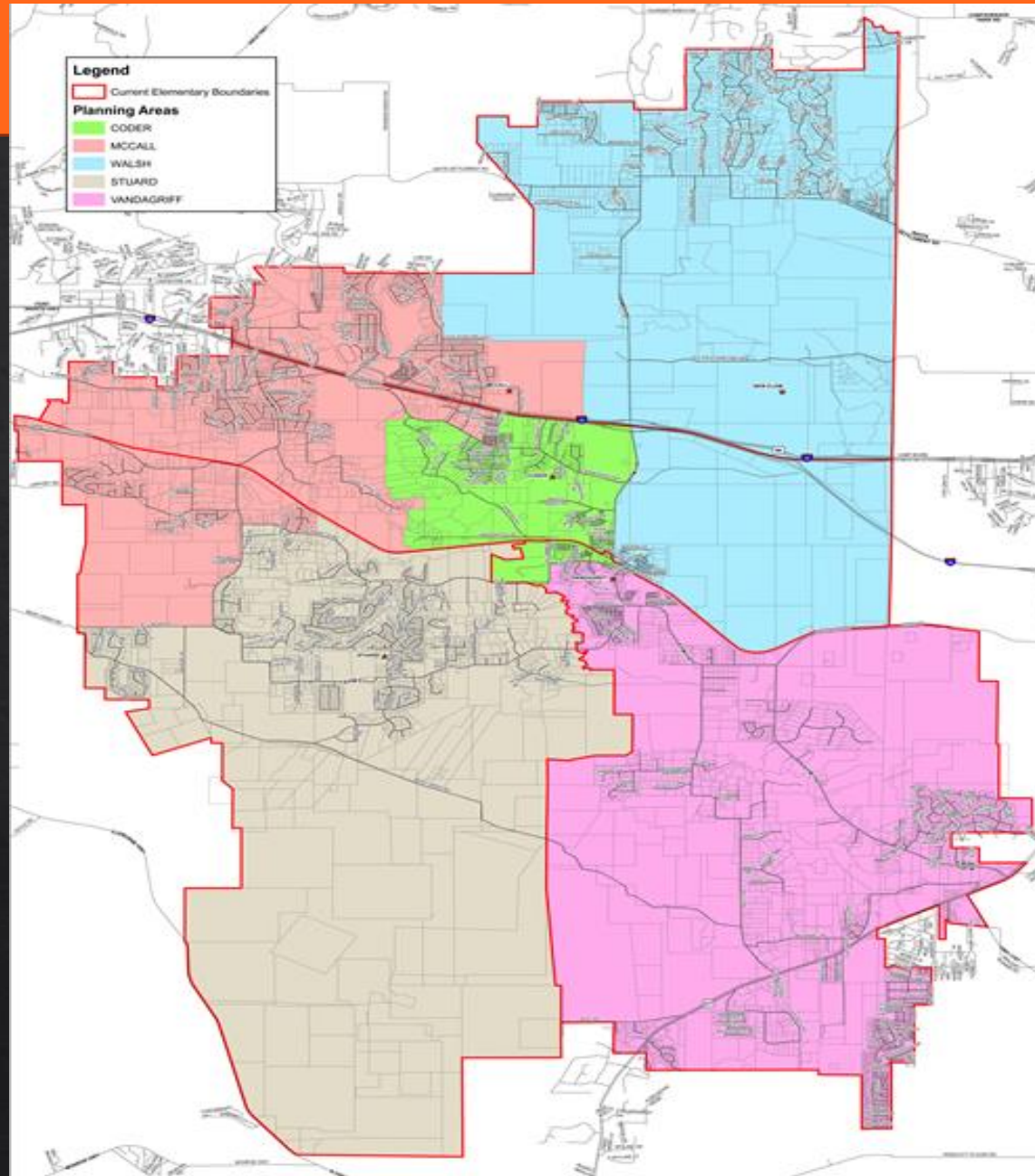
(9th Grade)

Aledo High School

(10th-12th grade)

Aledo Learning Center

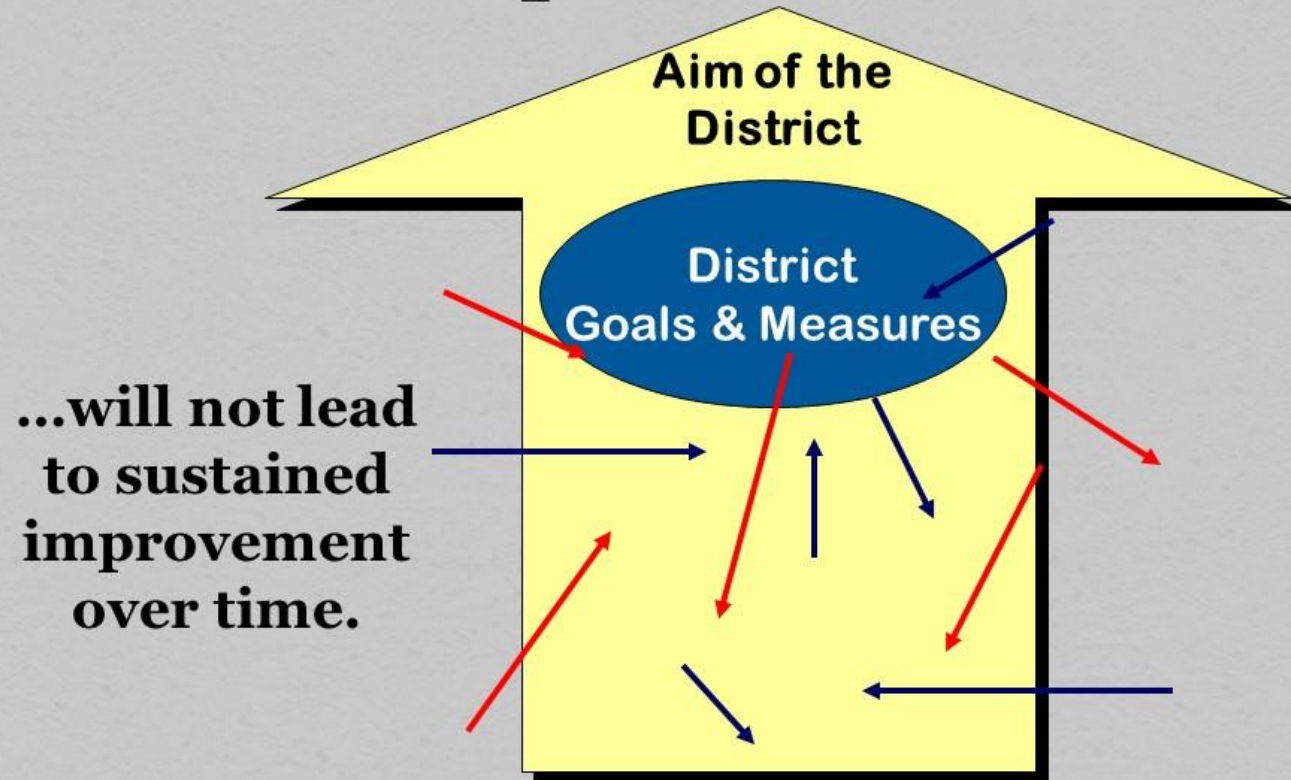
Aledo ISD Map



Instructional Focus



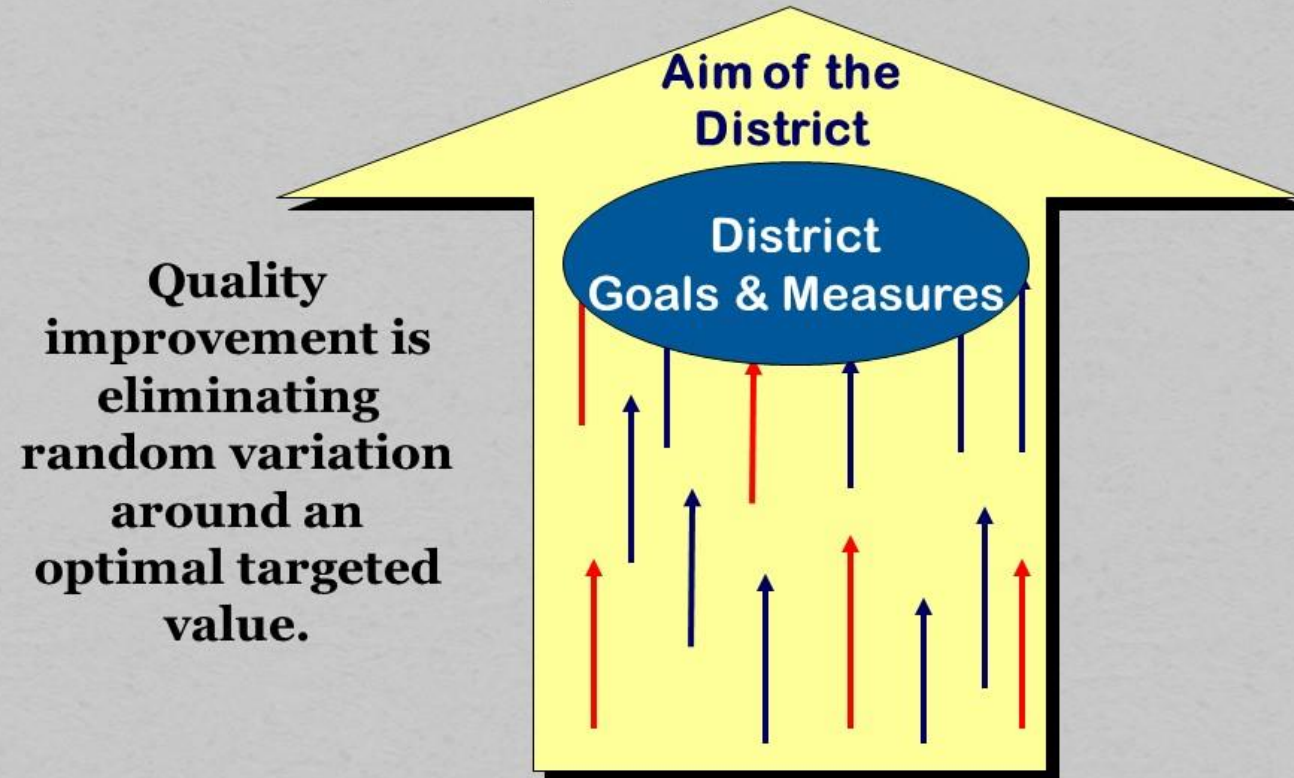
Random Acts of Improvement



Instructional Focus



Aligned Acts of Improvement



Instructional Focus



ALEDO ISD FOCUS DOCUMENT 2018-2019

WHAT WE TEACH

Standards Driven
Curriculum

Teaching to the Depth
of the Standards

HOW WE TEACH

Focus on 8 Cognitive Skills
Thinking Maps

Fundamental
Five

AUTHENTIC LITERACY

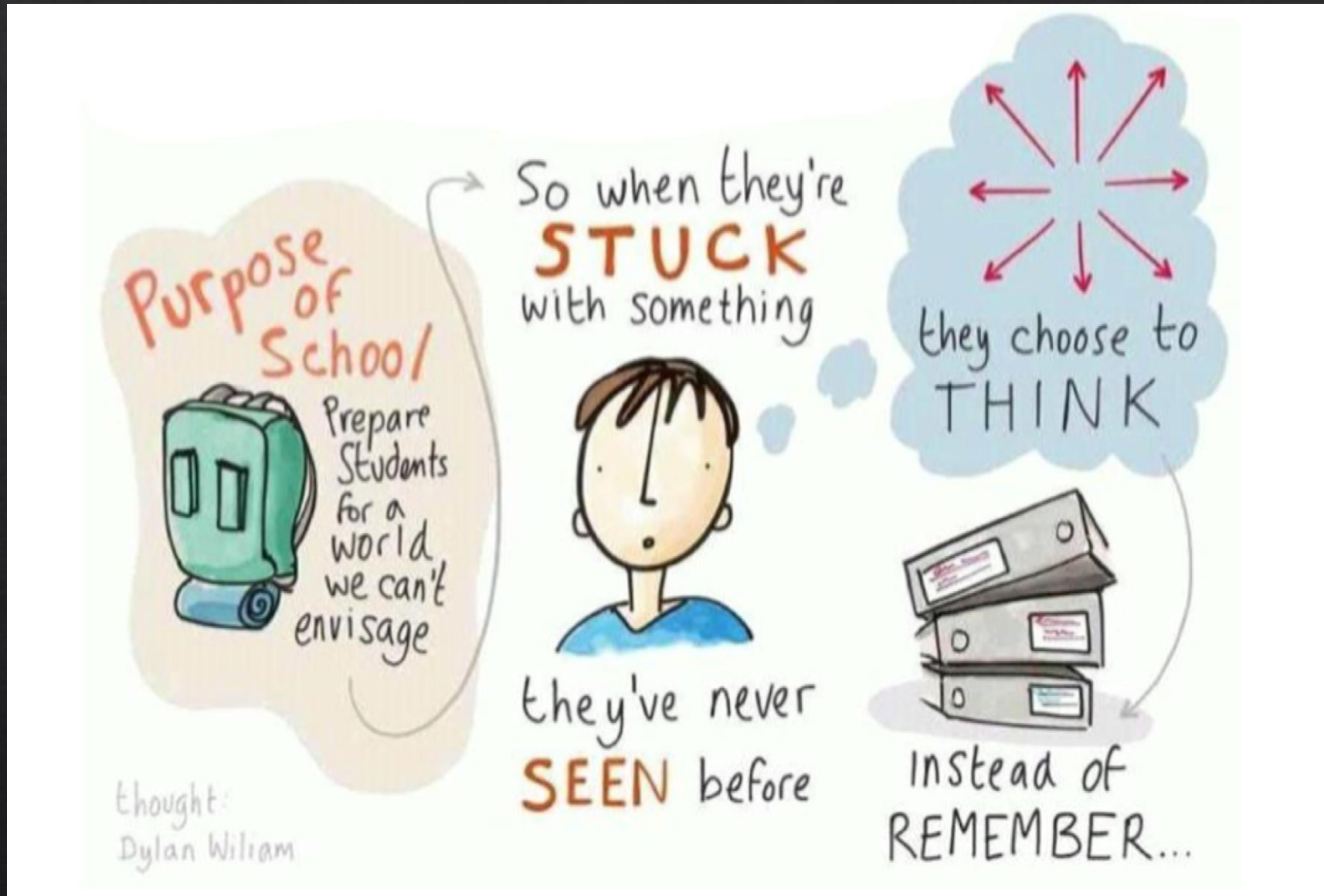
Balanced Literacy K-2

Write From the Beginning &
Beyond

Problem of Practice:
*Students are not demonstrating
yearly progress at expected
levels and are not demonstrating
proficiency in critical writing
across all content areas.*

Problem of Practice: *After an analysis of district data, students are not demonstrating academic progress at expected levels and are not demonstrating proficiency in critical writing across all content areas.*

Building Critical Thinkers



Helping Students Find What They Love!



Major District Initiatives



- Instructional Focus
- District of Innovation
- eXcellence in Governance
- Planning for Growth



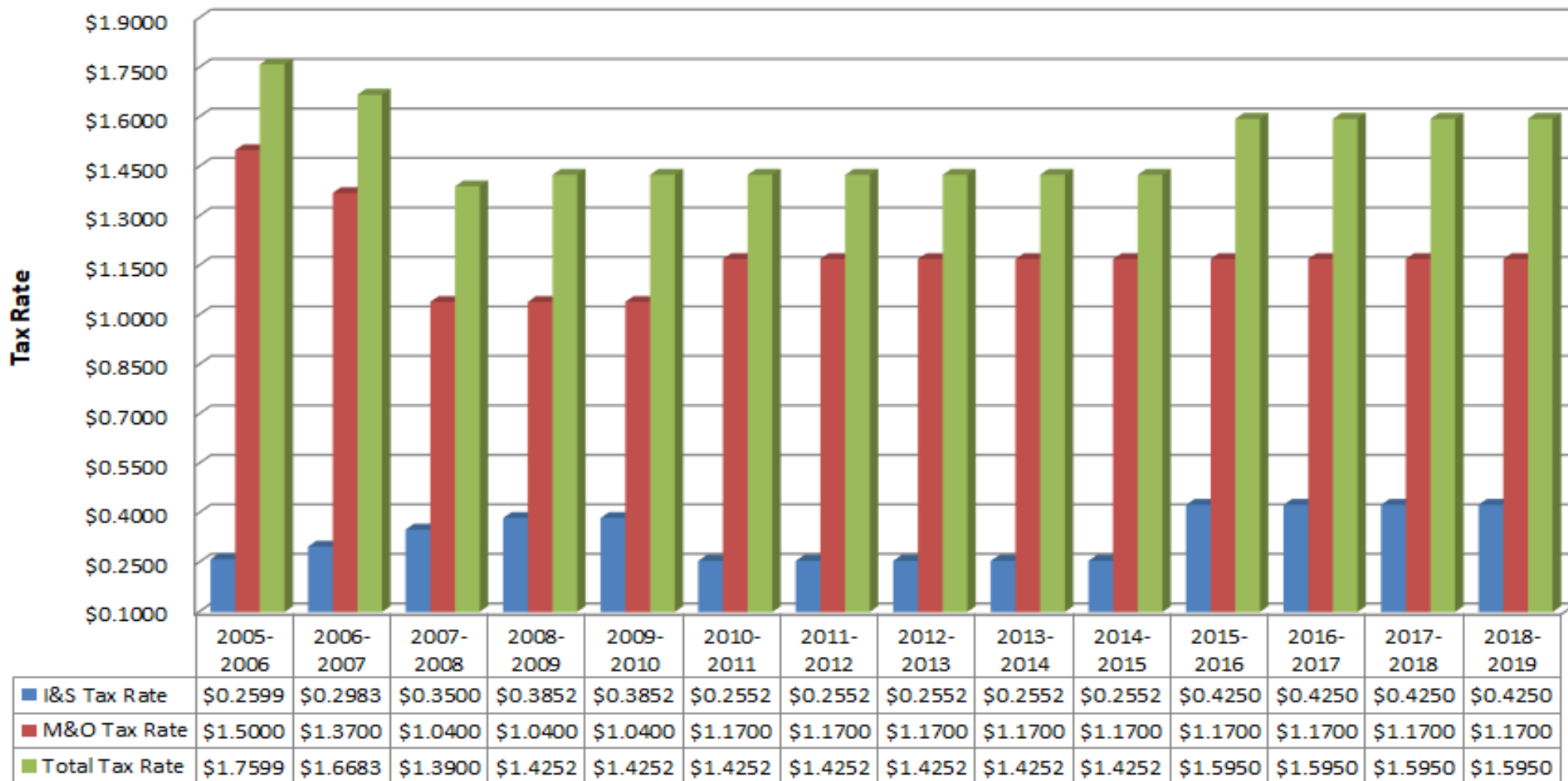


Two Parts of the District's Total Tax Rate

- **Maintenance & Operations (M&O) Tax Rate**
 - Used to pay for “day-to-day” operational expenses, such as teacher salaries, instructional programs, utilities, etc.
- **Interest & Sinking (I&S) Tax Rate**
 - Used to pay for annual debt service requirements of bonds approved by District voters.
- Primary items we consider when developing the annual budget:
Projected student enrollment, property tax values, projected property tax collections, instructional staff needed to serve projected student enrollment



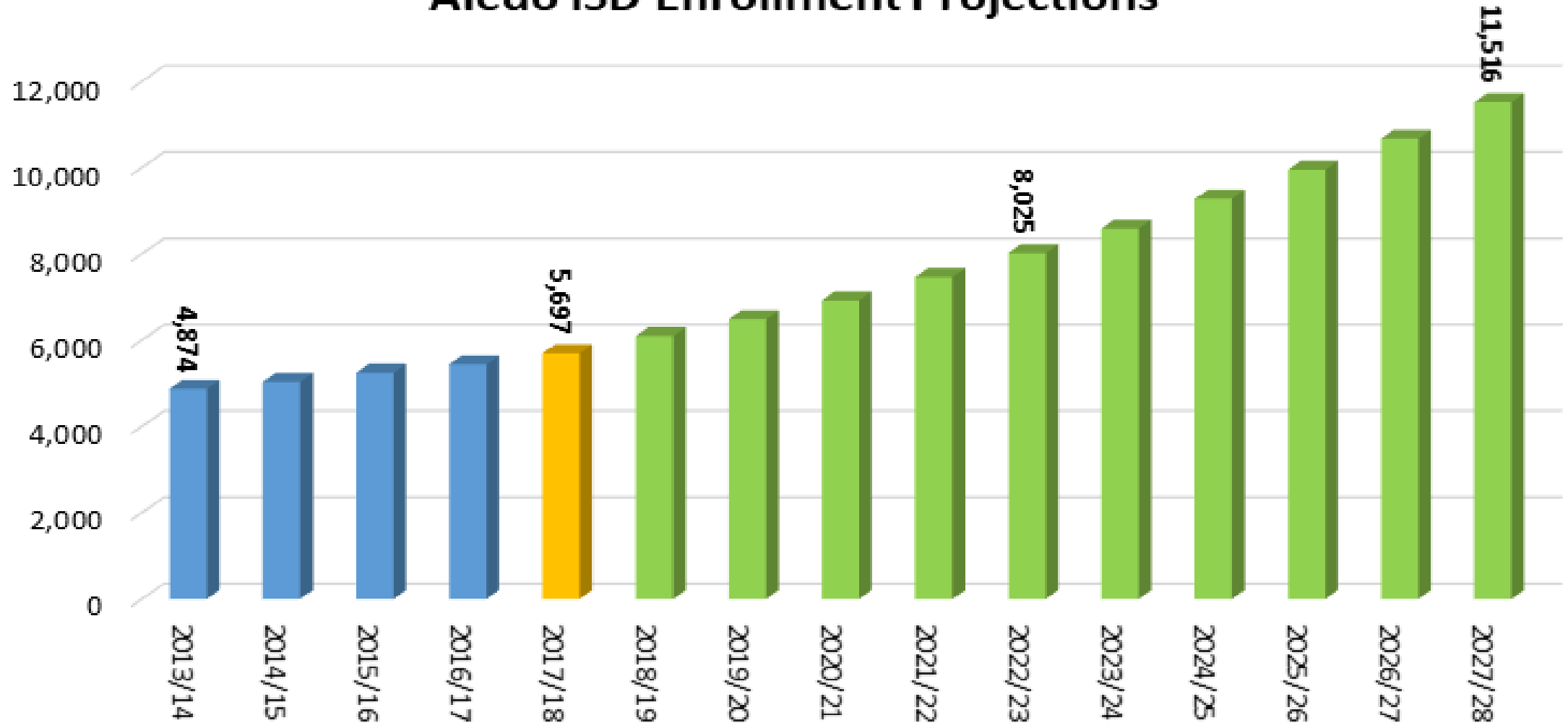
Aledo ISD Tax Rates



Planning for Growth



Aledo ISD Enrollment Projections



Elementary (Pre K-5) Level Capacity



When do Fall 2018 projections show the number of students in grades PreK-5 exceeding current AISD capacity?

- Functional capacity exceeded: 2020-2021
- Maximum capacity exceeded: 2021-2022

Walsh Elementary to exceed max capacity in 2020-2021 (will be at 118% of max capacity)

3-of-5 elementary campuses exceed functional capacity in 3 years:

- Vandagriff Elementary: 2019-2020
- Stuard Elementary: 2021-2022
- McCall Elementary: 2020-2021
- Walsh Elementary: 2019-2020

Middle School (6-8) Level Capacity



When do Fall 2018 projections show the number of students in grades 6-8 exceeding current AISD capacity?

- Functional capacity exceeded: 2021-2022
- Maximum capacity exceeded: 2023-2024

Aledo MS to exceed functional capacity: 2019-2020 [currently 16 students under functional capacity]

Aledo MS to exceed max capacity: 2020-2021

High School Level (9-12) Capacity



When do Fall 2018 projections show the number of students in grades 9-12 exceed current AISD capacity?

- Functional capacity exceeded: 2025-2026
- Maximum capacity exceeded: 2026-2027

Aledo ISD Bond History



2007: Failed

2008: Passed

Daniel Ninth Grade Campus
Technology/security center
Teacher training center additions
Renovations to admin building

2014: Failed

2015: 2025 Committee

2015: Passed

Elementary #5: Walsh Elementary
Technology/Safety & Security
Maintenance

2017: Failed

Middle School #2
Ag Classrooms/Barn

Administration's Priorities In Planning for Growth



Use of data

- Student growth projections
- Financial data
- Estimated construction costs
- Availability of utilities, access, etc. for land parcels

Needs for all students

- Student learning and programmatic needs
- Limiting frequency of moving students between/among campuses as much as possible; when attendance zones must be redrawn, citizens committee will make recommendation to Board

Administration's Priorities In Planning for Growth



Efficient & effective use of taxpayer dollars

Building for longevity and flexibility

Expectations of the community

- Citizens committee (Bearcat Growth Committee)
- Feedback from staff, parents, community

Frequent and open communication/information readily available

Planning for Growth



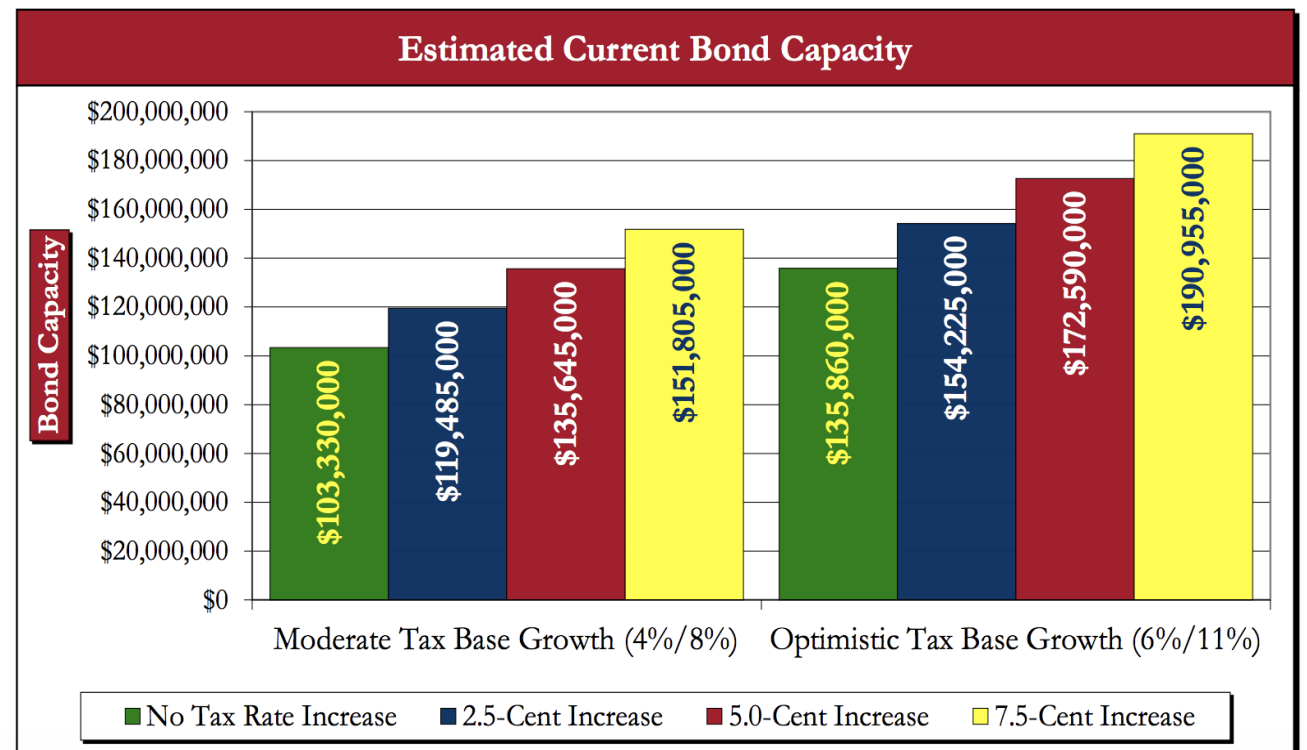
Estimated Bond Capacity

\$135 Million+
with 0¢ Tax Rate Increase



Preliminary Bond Capacity Analysis

- ❑ The following demonstrates the District's estimated bond capacity based upon the scenarios presented herein.



Aledo ISD



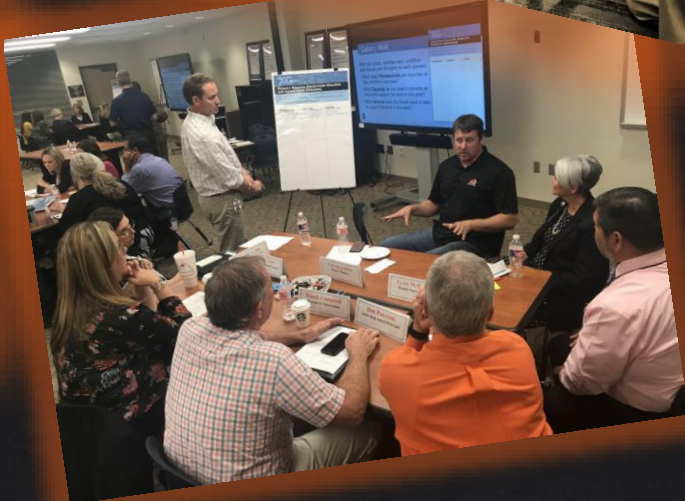
In Aledo ISD, We Are
#GrowingGreatness!



#GrowingGreatness in Our Students!



#GrowingGreatness in Our Staff!



#GrowingGreatness in Our Community!

