

New Jersey Department of Education 2022-2023 School Performance Reports Haworth Public School

May 15, 2024

Mr. Paul Wolford, Superintendent




2022-2023 School Performance Reports

- The **School Performance Reports** reflect the New Jersey Department of Education’s (NJDOE) commitment to providing parents, students, and school communities with a large variety of information about each school and district. These reports can be used as a tool to help evaluate whether all students have equitable access to high quality education.
- Communities are encouraged to use these reports to **learn more, start conversations, and engage.**
- In addition to meeting the federal report requirements under ESSA, NJDOE is committed to developing reports that **provide stakeholders with a broader picture of their schools and districts.**
- Along with the **detailed School Performance Reports** for each school, district, and state, **Summary Reports** for each school and district are also available.
- The reports and resources are also translated into Spanish.

School Performance Reports Homepage

You can find the School Performance Reports at njschooldata.org.

School Year 2021-2022 ▾ Resource Documents - Take Feedback Survey Download Data Contact Us



The School Performance Reports reflect the New Jersey Department of Education's commitment to providing parents, students and school communities with a large variety of information about each school and district. These reports can be used as a tool to help evaluate whether all students have equitable access to high quality education. We encourage you to use these reports to learn more, start conversations, and engage.


What's New:

- 2020-2021 reports were released in April 2022.
- Expected release of the 2021-2022 is spring 2023.
- View the ["Impacts of COVID-19 on Data Availability"](#) resource to see how data in the reports was affected by the COVID-19 pandemic.

Questions about reports? Contact reportcard@doe.nj.gov

Search by County, School Name, District, or Zip Code

Schools A-Z Districts A-Z State Report



Links to the Performance Reports on District Website

<https://rc.doe.state.nj.us/selectreport/2022-2023/03/2090>

OFFICIAL SITE OF THE STATE OF NEW JERSEY Governor Phil Murphy
NJ.gov | Services | Agencies

School Year: 2022-2023 Home Resource Documents Take Feedback Survey Download

NJ SCHOOL PERFORMANCE REPORT
Haworth Public School District (03-2090)

Reports in English
Detailed Report Summary Report

Translated Reports (in Spanish)
Informe Detallado Informe Resumido

Translated Resources

- Reference Guide (Gua de Referencia: Detallado)
- FAQ (Preguntas Frecuentes)
- Privacy Rules (Reglas de Privacidad de Datos)

Schools in District

Click on a school name below to access the detailed school-level report for each school.

School Name	Grades Offered
Haworth Public School	KG-08

2022-2023 Report Updates

- The 2022-2023 reports include all data that was previously reported prior to the COVID-19 pandemic, which includes all assessment, student growth, and accountability data.
- The NJDOE believes that it is critical to use the data in the reports, along with other information collected directly within districts and communities, to start conversations, identify gaps in information, and continue to find ways to ensure all students receive the support and resources that they need.
- As data over the last three years was impacted by the pandemic in various ways, the NJDOE does recommend caution in comparing data from year to year.
- The 2022-2023 reports include changes that respond to stakeholder feedback, federal and state requirements, and data availability. These changes include:
 - **Student growth data** as measured by median student growth percentiles for the first time since the 2018-2019 reports;
 - Expanded **computer science course participation data** showing participation for all grades kindergarten through 12; and
 - Results from the fall 2023 **Every Student Succeeds Act (ESSA) accountability process**.

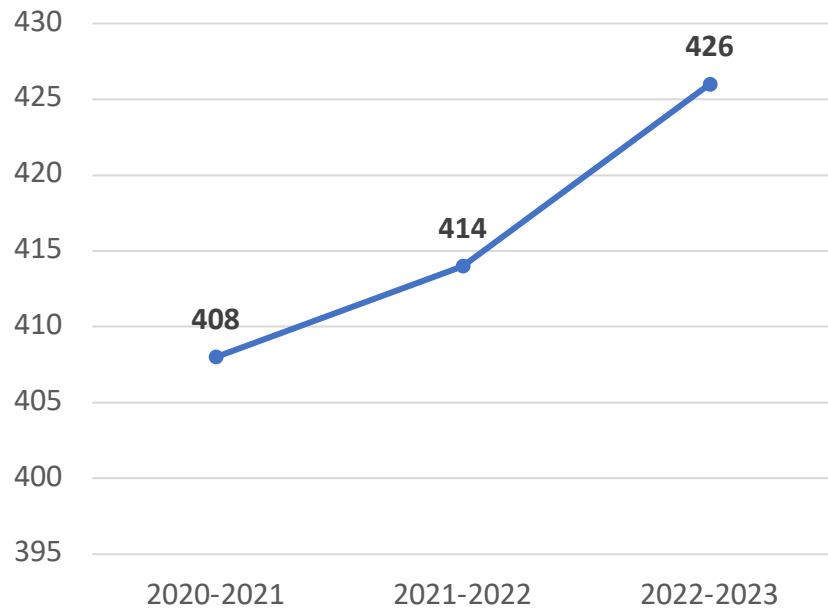
What Kinds of Information Do the School Performance Reports Include?

The New Jersey School Performance Reports contain hundreds of data points about schools and districts across New Jersey including:

- ✓ School and district overviews
- ✓ Demographic information
- ✓ Student growth
- ✓ Academic achievement
- ✓ College and career readiness
- ✓ Graduation and postsecondary information
- ✓ School climate and environment
- ✓ Staff information
- ✓ School Accountability
- ✓ School and district narrative information

Student Enrollment and Demographics

Total Enrollment



Student Group	2020-2021	2021-2022	2022-2023
Economically Disadvantaged	0.0%	0.0%	0.0%
Students with Disabilities	16.2%	18.1%	17.1%
English Learners	2.0%	2.2%	3.3%
Homeless Students	0.0%	0.0%	0.0%
Students in Foster Care	0.0%	0.0%	0.0%
Military-Connected Students	0.0%	0.0%	0.0%
Migrant Students	0.0%	0.0%	0.0%

HPS 22-23 Growth Standards




How does student growth compare to other students?

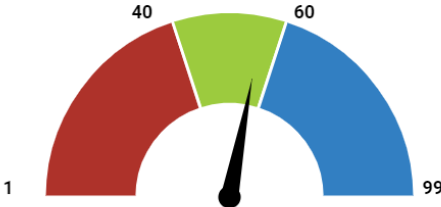
This section shows the median student growth percentile for English Language Arts (ELA) and mathematics.

Each student gets a **student growth percentile (SGP)** from 1 to 99 for English (4th to 8th grade) and Math (4th to 7th grade) that explains their progress compared to students who had similar test scores in the past.

If the student growth percentiles for all students in the district are ordered from smallest to largest, the **median student growth percentile (mSGP)** is the percentile in the middle of that list.




English Language Arts

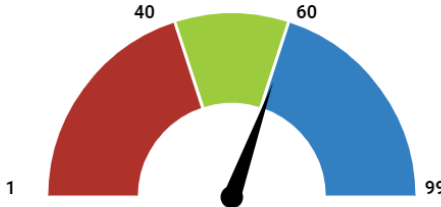
-  Below Standard: 1 - 39.5
-  Met Standard: 40 - 59.5
-  Exceeds Standard: 60 - 99



56
Met Standard

Mathematics

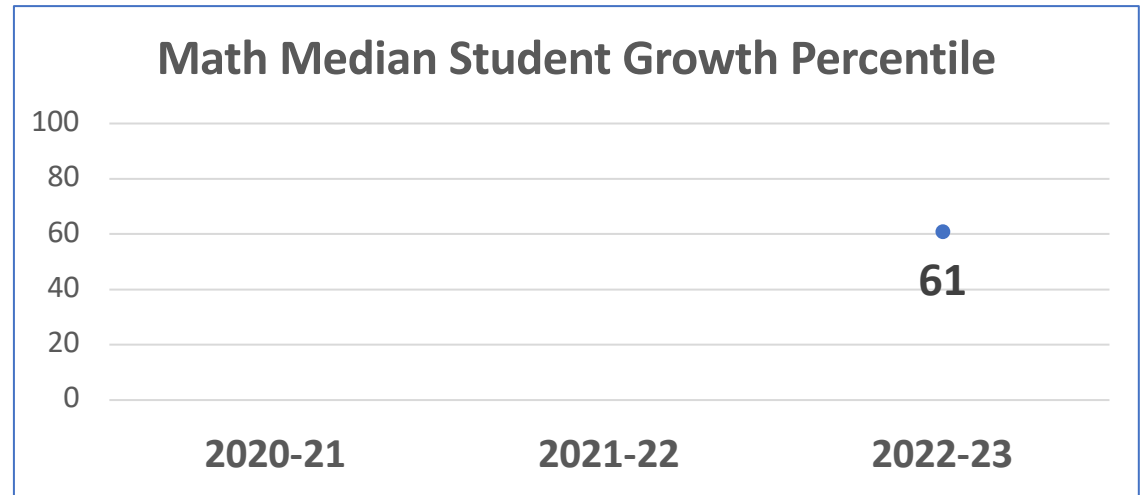
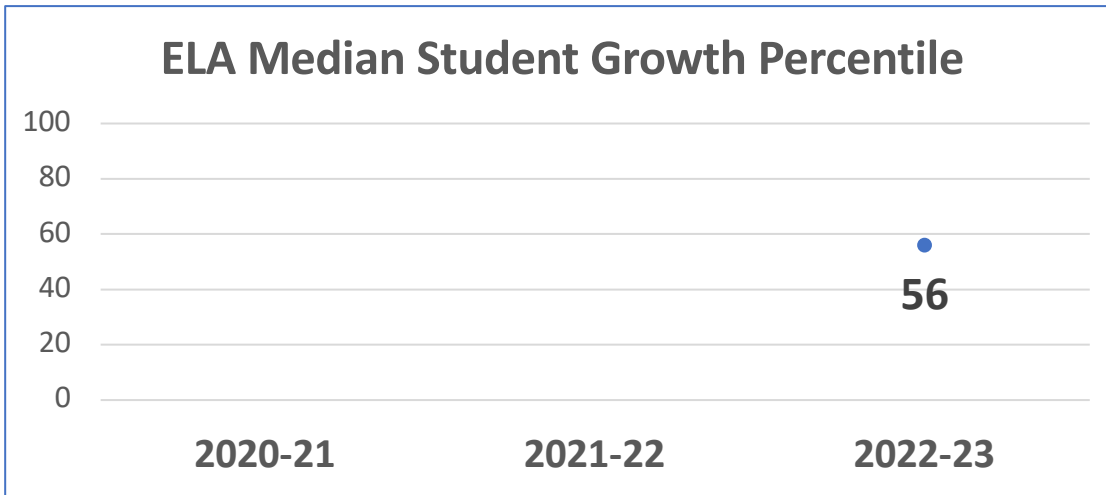
-  Below Standard: 1 - 39.5
-  Met Standard: 40 - 59.5
-  Exceeds Standard: 60 - 99



61
Exceeds Standard

Student Growth Results

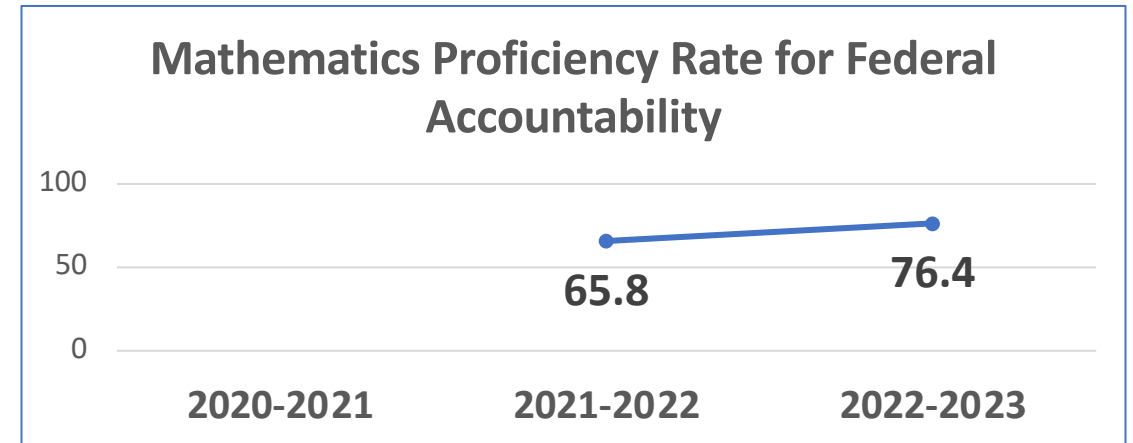
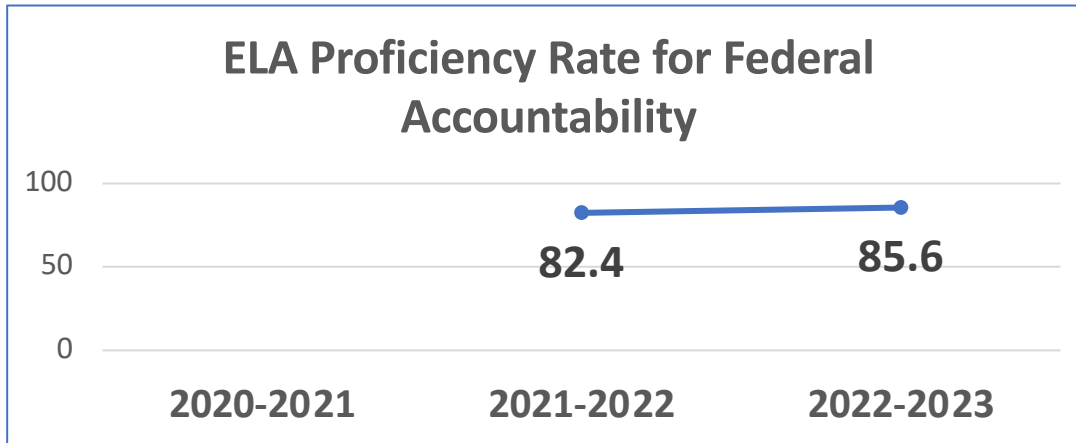
- Due to the cancellation of the NJSLA in both spring 2020 and spring 2021, student growth data is not available for 2020-21 or 2021-22.



Performance	ELA 2020-21	ELA 2021-22	ELA 2022-23	Math 2020-21	Math 2021-22	Math 2022-23
Median Student Growth Percentile	n/a	n/a	56	n/a	n/a	61
Statewide Median Student Growth Percentile	n/a	n/a	50	n/a	n/a	50

Statewide Assessment Results – NJSLA/DLM

Due to the cancellation of the NJSLA in both spring 2020 and spring 2021, participation and proficiency rates are not available for 2020-2021.



Performance	ELA 2020-2021	ELA 2021-2022	ELA 2022-2023	Math 2020-2021	Math 2021-2022	Math 2022-2023
Participation		99.3%	100%		99.3%	99.3%
Proficiency Rate		82.4%	85.6%		65.8%	76.4%
Statewide Proficiency		49.0%	51.3%		36.0%	38.2%

Chronic Absenteeism and Attendance

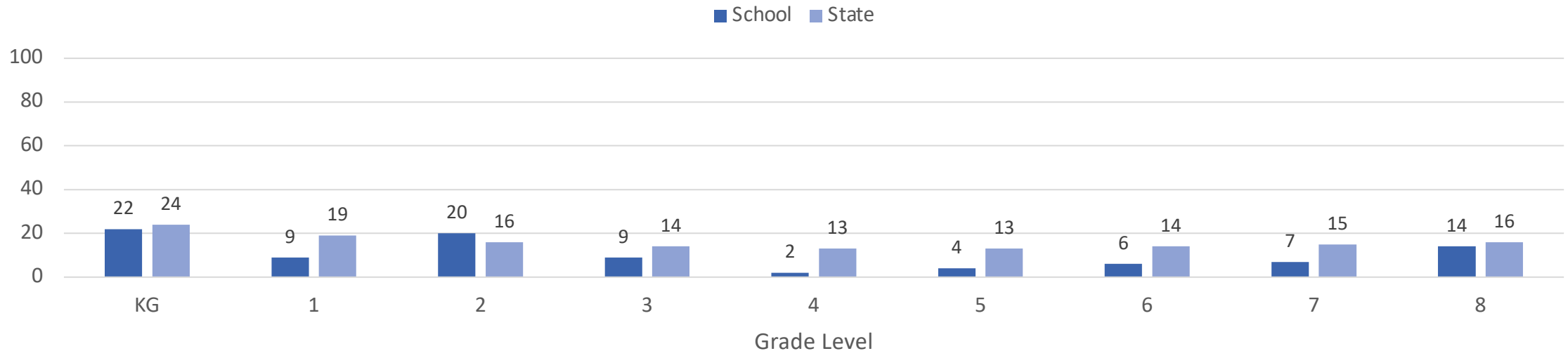
The School Performance Reports include information on chronic absenteeism and attendance for students.

Chronic absenteeism is defined as being absent for 10% or more of the days enrolled during the school year. A student who is not present for any reason, whether excused, unexcused, or for disciplinary action, is considered absent unless permitted by state statute or regulations.

Chronic Absenteeism

Student absences provide important information about a school's culture and climate. Research shows that absences impact a student's ability to succeed in school. Chronic absenteeism is defined as being absent for 10% or more of the days enrolled during the school year. A student who is not present for any reason, whether excused, unexcused, or for disciplinary action, is considered absent unless permitted by state statute or regulations.

Chronic Absenteeism Rates by Grade Level



How Can I Get Involved?

- Reach out to your school and district to find out about opportunities for how parents, families, and educators will work together to improve their schools.
- Schools and districts are required to engage with parents, families, educators, and community members throughout the year to assess needs related to the areas of weakness, identify strategies and resources that can impact improvement, create an improvement plan and timeline for completion.
- See NJDOE's Stakeholder Engagement Guide on the NJDOE [ESSA resources page](#) for detailed descriptions of these requirements.

Have Feedback or Questions?

- **Additional resources** are available at: njschooldata.org
- **Visit** our district website for updates: <https://www.haworth.org/>
- **Email** the district: haworthschool@nvnet.org
- Take the [NJDOE School Performance Reports **feedback survey**](https://www.surveymonkey.com/r/2022-23SPR):
<https://www.surveymonkey.com/r/2022-23SPR>
- **Visit** the NJDOE website at: nj.gov/education
- **Email** the NJDOE: reportcard@doe.nj.gov