



ALEDO
GROWTH
COMMITTEE

November 1, 2022

GROUP NORMS

01

Only one speaker at a time...no side conversations

02

Respect the person speaking...value the input of others

03

Listen with an open mind and a desire to learn...do not assume you know

04

Share ideas freely in a safe environment...do not be afraid to voice your honest opinion

05

It's not personal, it's collective...focus on the district as a whole

06

Honor the groups' time commitment...attend all meetings, be on time, stay on topic



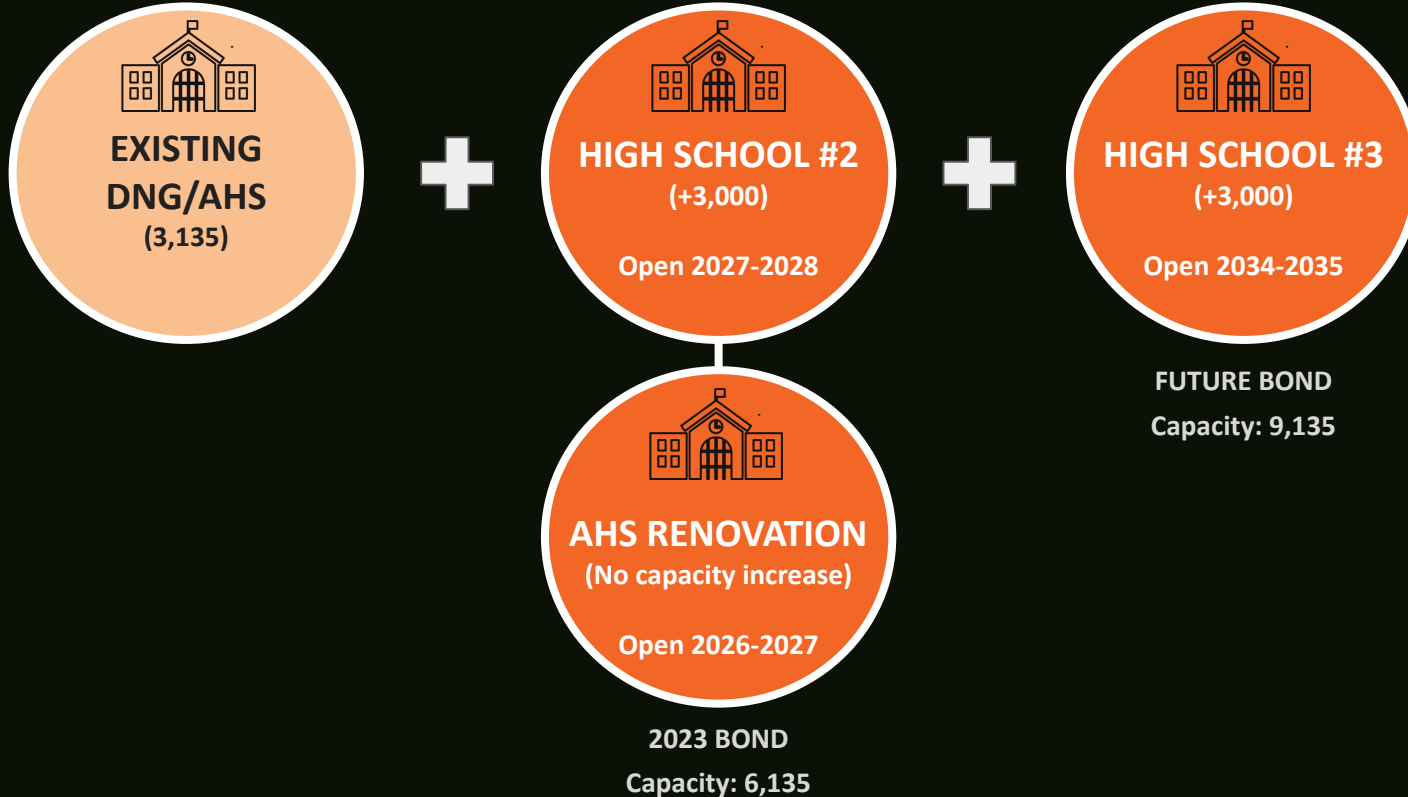


Assumptions for starting high school options

- This is only a starting point for the purposes of discussion
- Any other options created by the committee will be added & studied
- Assumes medium growth projections
- ± 3000 student capacity (grades 9-12) can be adjusted
- Built only on capacity/programming for students; does not consider any other factors
- Only high school; does not consider elementary school or middle school needs
- “Possible bond” based only on projected timeline for design/construction and capacity
- How a new high school building is used (what grade levels) varies



OPTION A: AISD would build a comprehensive HS #2 (grades 9-12) and complete a renovation of AHS.



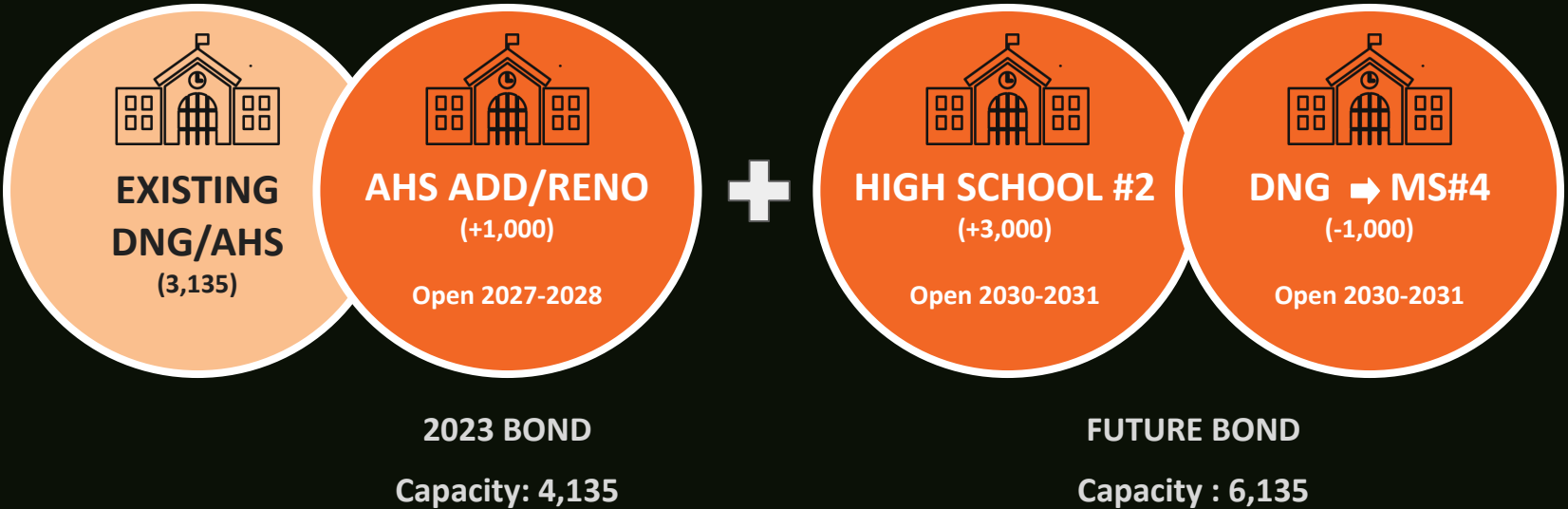
OPTION A

Assumptions

- DNG/AHS combined campus serves 9-12
- HS #2 doesn't have a 9th grade campus
- AHS/DNG and HS #2 will have identical offerings
- All spaces at AHS will be duplicated or expanded at HS #2 except for varsity competition stadium (not all DNG spaces will be duplicated, i.e., 2nd cafeteria)
- HS #2 includes competition gym: 3,000± capacity
- Renovations at AHS will not increase capacity
- Renovations at AHS: update finishes, LED lighting



OPTION B: AISD would construct an addition and renovation to AHS.



OPTION B

Assumptions

- Aledo High School Addition & Renovation:
 - Expansion: Library, Kitchen/Cafeteria, Classrooms, Band, Administration, Athletics, Dance, CTE
 - Renovation for collaboration spaces, updated finishes (paint, ceilings, flooring, lighting)
 - Competition gym: 3,000± capacity
- Total 9-12 capacity/enrollment could reach 4135 on the AHS/DNG campus for a period of time, then could shrink to 3135



OPTION C: AISD would construct a college & career academy and complete a minor renovation to AHS to repurpose some spaces for student programs.



**EXISTING
DNG/AHS**
(3,135)



**COLLEGE & CAREER
ACADEMY**
(+1,200)
Open 2026-2027



HIGH SCHOOL #2
(+3,000)
Open 2031-2032



AHS MINOR RENO
(No capacity increase)
Open 2026-2027



AHS RENOVATION
(No capacity increase)
Open 2031-2032

2023 BOND
Capacity: 4,335

FUTURE BOND
Capacity: 7,335



OPTION C

Assumptions

- Students move betw. AHS/DNG, College & Career Academy
- College & Career Academy:
 - Flex Labs, Collaboration Spaces, Cafe/Commons
 - Programs: all College Credit Courses (dual credit, OnRamps), all CTE (incl. Ag Mech), Performing Arts, Fine Arts, etc.
 - Could be master planned for possible future addition
- Aledo High School Minor Renovation:
 - Ag Building Renovation for Additional Fine Arts/Athletic Space (Dance, Wrestling), Additional Locker Rooms
 - Interior Renovation for Performing Arts: Ensemble, Dressing & Storage
 - Expand Ag Barn
 - Add Athletic Field House Space



OPTION D: AISD would construct phase 1 of a new comprehensive HS #2 and complete a renovation of AHS.



**EXISTING
DNG/AHS**
(3,135)



**PHASE 1
HIGH SCHOOL #2**
(+1,500)
Open 2026-2027



**PHASE 2
HIGH SCHOOL #2**
(+1,500)
Open 2032-2033



AHS RENOVATION
(No capacity increase)
Open 2026-2027

FUTURE BOND
Capacity: 6,135

2023 BOND
Capacity: 4,635




OPTION D

Assumptions


- High School #2 Phase 1 (1,500 capacity):
 - 55% of total (PH1/PH2) square footage accounted for in Phase 1
 - Circulation (hallways) sized for 3,000 student capacity
 - Core spaces (Library, Kitchen, Cafeteria, etc.) sized for 1,500 capacity with planned expansion in Phase 2
 - Baseball, Softball, Practice Fields, Tennis Courts, Indoor Practice Facility, Field Events included
 - Master Planned for expansion
 - Varsity competition stadium not included
- Renovations at AHS will not increase capacity
- Renovations at AHS: update finishes, LED lighting



OPTION E: AISD would construct an addition and renovation to AHS and phase 1 of a new comprehensive HS #2



**EXISTING
DNG/AHS
(3,135)**



**AHS ADD/RENO
(+1,000)
Open 2027-2028**




**PHASE 1
HIGH SCHOOL #2
(+1,500)
Open 2026-2027**

**2023 BOND
Capacity: 5,635**



**PHASE 2
HIGH SCHOOL #2
(+1,500)
Open 2033-2034**



**DNG → MS#4
(-1,000)
Open 2033-2034**

**FUTURE BOND
Capacity: 6,135**



OPTION E

Assumptions

- AHS/DNG be 4000 9-12 for period of time
- Aledo High School Addition & Renovation:
 - Expansion: Library, Kitchen/Cafeteria, Classrooms, Band, Administration, Athletics, Dance, CTE
 - Renovation for collaboration spaces, updated finishes (paint, ceilings, flooring, lighting)
 - Competition gym: 3,000± capacity
- High School #2 Phase 1 (1,500):
 - 55% of total (PH1/PH2) square footage accounted for in Phase 1
 - Circulation sized for 3,000 student capacity
 - Core spaces (Library, Kitchen, Cafeteria, etc.) sized for 3,000 student capacity with planned expansion in Phase 2
 - Baseball, Softball, Practice Fields, Tennis Courts, Indoor Practice Facility, Field Events included
 - Master Planned for expansion



OPTION ?

WHAT OPTIONS SHOULD BE ADDED AND STUDIED?

WHAT ELEMENTS SHOULD BE RECONSIDERED/REORGANIZED?





CONSTRUCTION

INTRODUCTIONS



Chris Campbell

Chief Facilities +
Construction Officer
Aledo ISD



Joshua Cogburn

Principal
Huckabee Architects



Casey Casstevens

Director of Design
Huckabee Architects



Mike King

Planner
Huckabee Architects



CONSTRUCTION

Agenda

- Current State of the Construction Industry
- High School – Project Planning



CONSTRUCTION

- Trends: Addition & Renovations vs. New High Schools
- ES/MS: Ideal timing of bids
- Escalation out to 2024+
- Cyclical: 2008/09 - Crash, Spike, Level off



CURRENT STATE

New High School Cost Comparison

District	Approximate Square Footage	Bid Date	Approximate Cost/ SF	Approximate Total Construction Cost
Prosper ISD New HS #3	530K ±	June 2021	\$378 ±	\$200.5M ±
Wichita Falls ISD Legacy HS	391K ±	September 2021	\$358 ±	\$140.2M ±
Wichita Falls ISD Memorial HS	391K ±	September 2021	\$363 ±	\$142.5M ±
Katy ISD HS #10	625K±	January 2022	\$304 ±	\$189.9M ±
Eagle Mountain Saginaw HS #4	650K±	January 2022	\$405 ±	\$264.5M ±



CURRENT STATE

High School Addition/Renovation Cost Comparison

District	Approximate Square Footage	Bid Date	Approximate Cost/ SF	Approximate Total Construction Cost
Friendswood ISD Friendswood HS Add. + Reno.	138,200	February 2022	\$434±	\$59.9M±
Godley ISD HS Add. Phase 2 (CTE & Comp. Arena)	144,674	February 2022	\$461±	\$66.7M±
Galena Park ISD HS Add. (CTE & Dining) + Reno.	97,221	July 2022	\$434±	\$42.2M±
Austin Area HS Addition + Renovation	67,794	July 2022	\$388±	\$26.3M±
Austin Area HS Addition + Renovation	123,028	October 2022	\$445±	\$54.7M±
Godley ISD HS Add. Phase 3 (F.A., Kitchen, Cafe)	48,102	October 2022	\$602±	\$29M±



CONSTRUCTION

- Trends: Addition & Renovations vs. New High Schools
- ES/MS: Ideal timing of bids
- Escalation out to 2024
- Cyclical: 2008/09 - Crash, Spike, Level off



CONSTRUCTION

Figure 3

Cost squeeze on contractors can last two years or more

Difference between year-over-year change in materials costs vs. bid prices, Jan 2006-Dec 2021



Source: Source: Bureau of Labor Statistics, www.bls.gov/eop/, producer price indexes for goods inputs to construction (material costs) and new warehouse construction (bid prices)



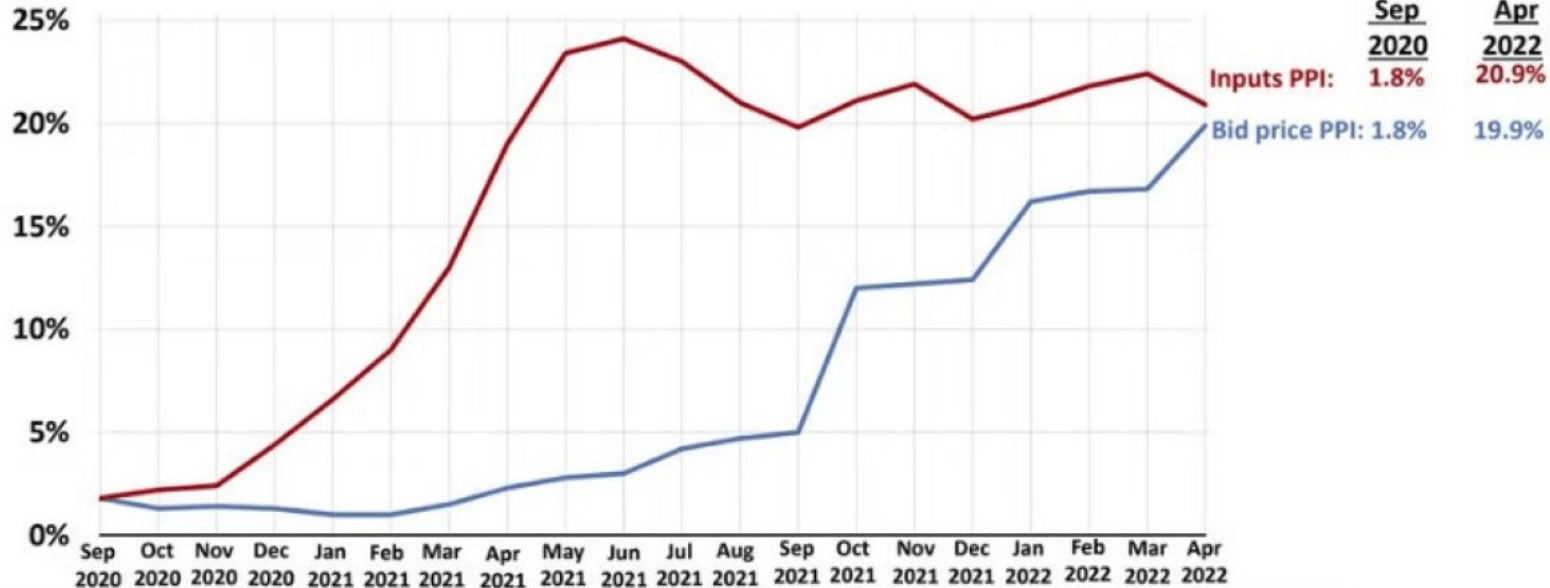
CONSTRUCTION

Costs vs. bid prices for new nonresidential construction

Year-over-year change in PPIs, Sep 2020-Apr 2022, not seasonally adjusted



AGC
THE CONSTRUCTION
ASSOCIATION



CURRENT STATE

Inflation Schedule

Year	% Inflation Per Year
2023	12%
2024	12%
2025	8%
2026	6%
2027	6%
2028	6%
2029	6%
2030	6%
2031	6%

Opinion of Construction Cost

Elementary School

- \$325 - \$450 per sqft

Middle School

- \$350 - \$500 per sqft

High School

- \$425 - \$600 per sqft

Soft Cost

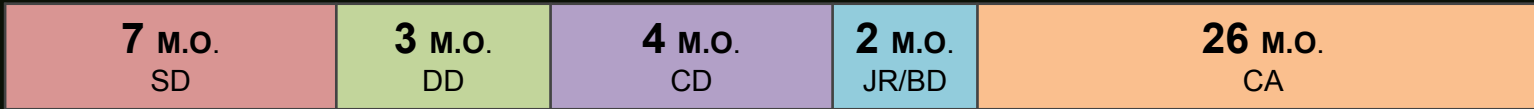
25%



CURRENT STATE

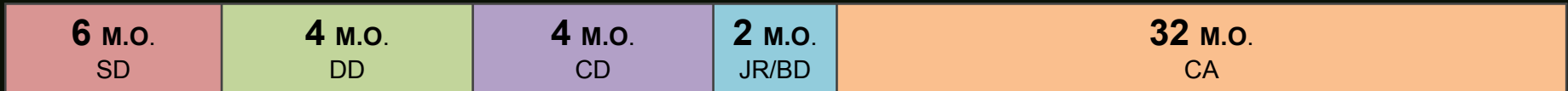
SD	Schematic Design
DD	Design Development
CD	Construction Documents
JR	Jurisdictional Review (Permits)
BD	Bidding
CA	Construction

Pre-2019 “Traditional” High School Project Schedule (Approximate)



Total Process 42 Months

Post-2019 “Traditional” High School Project Schedule (Approximate)



Total Process 48 Months



HIGH SCHOOL OPTIONS



Option	Building Components	Year Open	Total HS Capacity	Capacity Exceeded	Possible Bond
A	AISD would build a comprehensive HS #2 (grades 9-12) and complete a renovation of AHS. DNG/AHS (3,135) + HS #2 (+3,000) + AHS Renovation (+0) HS #3 (+3000)	2026-2028	6,135	2034-2035	2023
		2034-2035	9,135	?	2029
B	AISD would construct an addition and renovation to AHS. DNG/AHS (3,135) + AHS Addition & Renovation (+1,000) HS #2 (+3,000) + DNG Converted to MS #4 (-1000)	2027-2028	4,135	2030-2031*	2023
		2030-2031	6,135	2034-2035	2026
C	AISD would construct a College & Career Academy and complete a minor renovation to AHS to repurpose some spaces for student programs. DNG/AHS (3,135) + College & Career Academy (+1,200) + AHS Minor Reno. (+0) HS #2 (+3,000) + AHS Renovation (+0)	2026-2027	4,335	2031-2032*	2023
		2031-2032	7,335	?	2027
D	AISD would construct Phase 1 of a new comprehensive HS #2 and complete a renovation of AHS. DNG/AHS (3,135) + Phase 1 of HS #2 (+1,500) + AHS Renovation (+0) Phase 2 of HS #2 (+1,500)	2026-2027	4,635	2032-2033	2023
		2032-2033	6,135	?	2026
E	AISD would construct an addition and renovation of AHS and Phase 1 of a new comprehensive HS #2. DNG/AHS (3,135) + AHS Addition & Reno. (+1,000) + Phase 1 of HS #2 (+1,500) Phase 2 of HS #2 (+1,500) + DNG Converted to MS #4 (-1,000)	2026-2028	5,635	2033-2034	2023
		2033-2034	6,135	2034-2035	2028

* Capacity projected to be exceeded by only 20 students



HIGH SCHOOL PROJECT PLANNING


OPTION A: AISD would build a comprehensive HS #2 (grades 9-12) and complete a renovation of AHS.



**EXISTING
DNG/AHS**
(3,135)



HIGH SCHOOL #2
(+3,000)
Open 2027-2028



HIGH SCHOOL #3
(+3,000)
Open 2034-2035



AHS RENOVATION
(No capacity increase)
Open 2026-2027

FUTURE BOND
Capacity: 9,135

2023 BOND
Capacity: 6,135



OPTION A

Assumptions

- DNG/AHS combined campus serves 9-12
- HS #2 doesn't have a 9th grade campus
- AHS/DNG and HS #2 will have identical offerings
- All spaces at AHS will be duplicated or expanded at HS #2 except for varsity competition stadium (not all DNG spaces will be duplicated, i.e., 2nd cafeteria)
- HS #2 includes competition gym: 3,000± capacity
- Renovations at AHS will not increase capacity
- Renovations at AHS: update finishes, LED lighting

OPTION A

High School #2

Project Dates	2023		2024					2025	2026	2027																									
	M	J	J	A	S	O	N	D	J	F	M	A	M	J	J	A	S	O	N	D	J	D	J	D	J	F	M	A	M	J	J	A	S	O	N
Schematic Design	November 2023																																		
Design Development	March 2024																																		
Construction Documents	July 2024																																		
Jurisdictional Review	September 2024																																		
Bidding	August 2024																																		
Construction	May 2027																																		
Construction Duration	Estimated Square Footage	Total Construction OPC (Escalated)	Soft Costs, Fees, & Contingency	Furniture, Fixtures, & Equipment (FFE)	Total Project Budget OPC																														
32 Months	630,000 SF ±	\$416.6M ±	\$68.1M ±	\$17M ±	\$501.7M ±																														

*Bids in 2024

*Cost shown does not include cost of land.



OPTION A

AHS Renovation

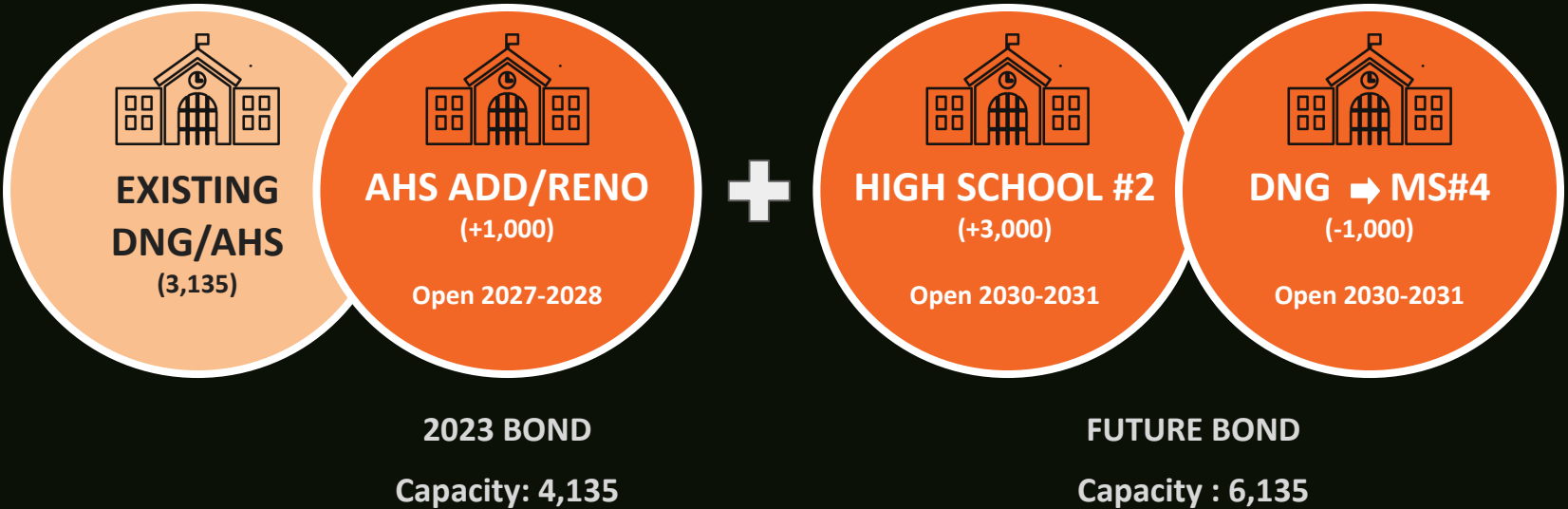
Project Dates	2023		2024				2025	2026											
	M	J	J	A	S	O	N	D	J	F	M	A	M	J	J	A	S	O	N
Schematic Design	[Bar] October 2023																		
Design Development	[Bar] January 2024																		
Construction Documents	[Bar] April 2024																		
Jurisdictional Review	[Bar] July 2024																		
Bidding	[Bar] June 2024																		
Construction	[Bar] June 2026																		
Construction Duration	Estimated Square Footage	Total Construction OPC (Escalated)	Soft Costs, Fees, & Contingency	Furniture, Fixtures, & Equipment (FFE)	Total Project Budget OPC														
24 Months	AHS	\$41.9M ±	\$6.9M ±	\$3.4M ±	\$52.2M ±														

*Bids in 2024

*Cost shown does not include cost of land.



OPTION B: AISD would construct an addition and renovation to AHS.



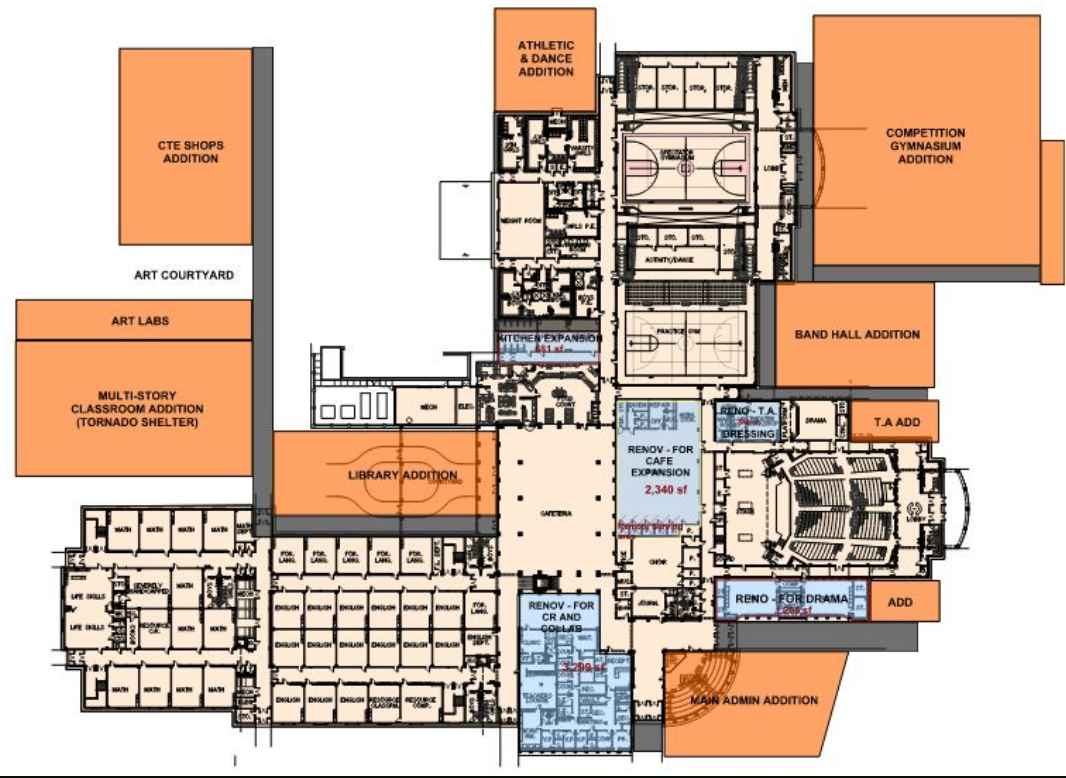
OPTION B

Assumptions

- Aledo High School Addition & Renovation:
 - Expansion: Library, Kitchen/Cafeteria, Classrooms, Band, Administration, Athletics, Dance, CTE
 - Renovation for collaboration spaces, updated finishes (paint, ceilings, flooring, lighting)
 - Competition gym: 3,000± capacity
- Total 9-12 capacity/enrollment could reach 4135 on the AHS/DNG campus for a period of time, then could shrink to 3135

OPTION B

AHS Addition & Renovation: Concept

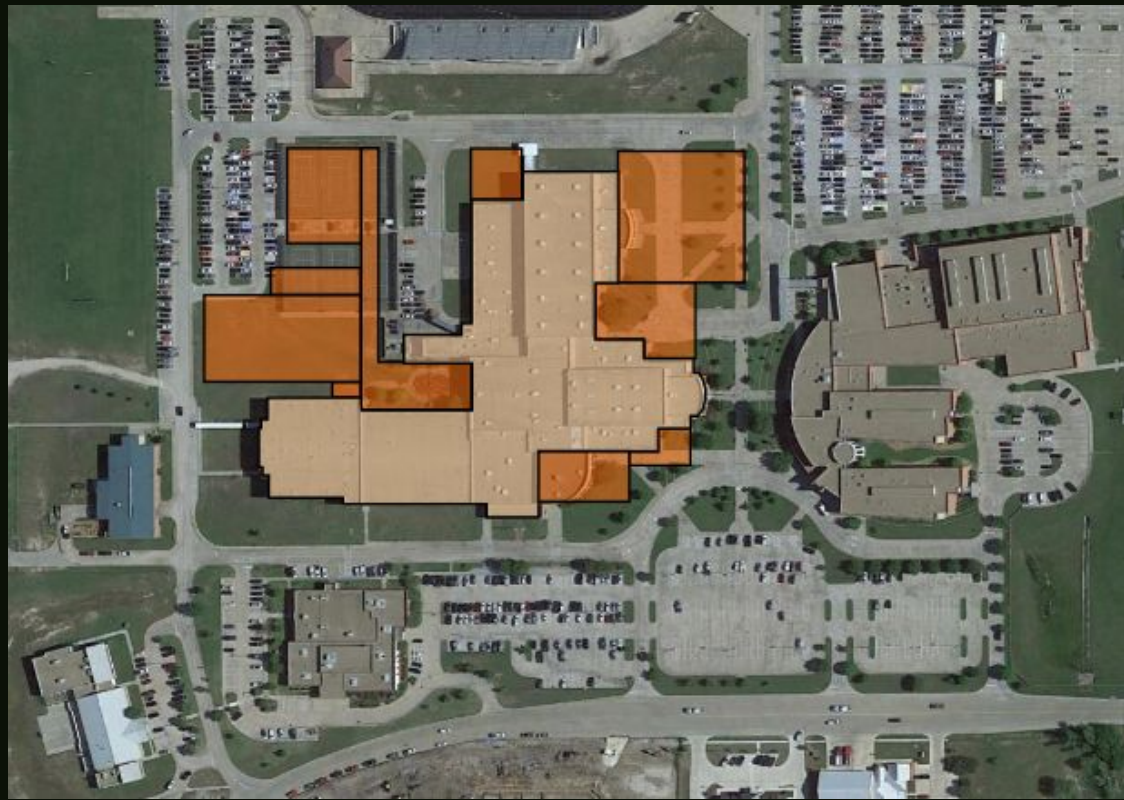




- EXISTING BUILDING
- POSSIBLE ADDITIONS
- POSSIBLE RE-PURPOSE



OPTION B

AHS Addition & Renovation: Concept



	EXISTING BUILDING
	POSSIBLE ADDITIONS



OPTION B

AHS Addition & Reno



Construction Duration	Estimated Square Footage	Total Construction OPC (Escalated)	Soft Costs, Fees, & Contingency	Furniture, Fixtures, & Equipment (FFE)	Total Project Budget OPC
32 Months	237,000 SF ± (Addition)	\$172.6M ±	\$29.8M ±	\$14.2M ±	\$216.6M ±

*Bids in 2024

*Cost shown does not include cost of land.



OPTION C: AISD would construct a college & career academy and complete a minor renovation to AHS to repurpose some spaces for student programs.



**EXISTING
DNG/AHS**
(3,135)



**COLLEGE & CAREER
ACADEMY**
(+1,200)
Open 2026-2027



HIGH SCHOOL #2
(+3,000)
Open 2031-2032



AHS MINOR RENO
(No capacity increase)
Open 2026-2027



AHS RENOVATION
(No capacity increase)
Open 2031-2032

2023 BOND
Capacity: 4,335

FUTURE BOND
Capacity: 7,335



OPTION C

Assumptions

- Students move betw. AHS/DNG, College & Career Academy
- College & Career Academy:
 - Flex Labs, Collaboration Spaces, Cafe/Commons
 - Programs: all College Credit Courses (dual credit, OnRamps), all CTE (incl. Ag Mech), Performing Arts, Fine Arts, etc.
 - Could be master planned for possible future addition
- Aledo High School Minor Renovation:
 - Ag Building Renovation for Additional Fine Arts/Athletic Space (Dance, Wrestling), Additional Locker Rooms
 - Interior Renovation for Performing Arts: Ensemble, Dressing & Storage
 - Expand Ag Barn
 - Add Athletic Field House Space



OPTION C

College & Career Academy: Concept



OPTION C

College & Career Academy

Project Dates	2023		2024				2025	2026																										
	M	J	J	A	S	O	N	D	J	F	M	A	M	J	J	A	S	O	N	D	J	D	J	F	M	A	M	J	J	A	S	O	N	D
Schematic Design	[Bar] October 2023																																	
Design Development	[Bar] January 2024																																	
Construction Documents	[Bar] April 2024																																	
Jurisdictional Review	[Bar] July 2024																																	
Bidding	[Bar] August 2024																																	
Construction	[Bar] August 2026																																	
Construction Duration	Estimated Square Footage	Total Construction OPC (Escalated)	Soft Costs, Fees, & Contingency	Furniture, Fixtures, & Equipment (FFE)	Total Project Budget OPC																													
24 Months	170,000 SF ±	\$89.1M ±	\$14.6M ±	\$7.2M ±	\$110.9M ±																													

*Bids in 2024

*Cost shown does not include cost of land.



OPTION C

AHS Minor Renovation: Concept



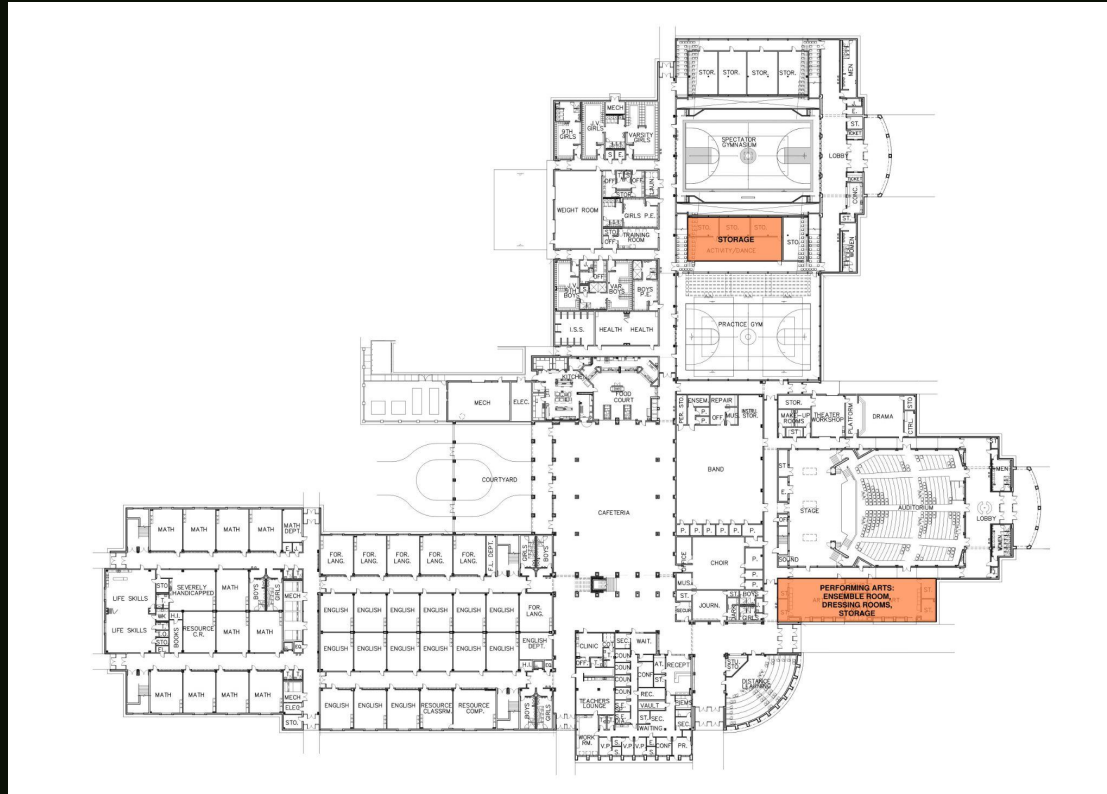
OPTION C

AHS Minor Renovation: Concept



OPTION C

AHS Minor Renovation: Concept



OPTION C

AHS Minor Renovation

Project Dates	2023		2024				2025	2026				2027																									
	M	J	J	A	S	O	N	D	J	F	M	A	M	J	J	A	S	O	N	D	J	D	J	F	M	A	M	J	J	A	S	O	N	D	J	F	M
Schematic Design	[Bar] October 2023																																				
Design Development	[Bar] January 2024																																				
Construction Documents	[Bar] April 2024																																				
Jurisdictional Review	[Bar] July 2024																																				
Bidding	[Bar] August 2024																																				
Construction	[Bar] March 2027																																				
Construction Duration	Estimated Square Footage	Total Construction OPC (Escalated)	Soft Costs, Fees, & Contingency	Furniture, Fixtures, & Equipment (FFE)	Total Project Budget OPC																																
10 Months	Existing + Addition	\$18.8M ±	\$3.1M ±	\$1.5M ±	\$23.4M ±																																

*Bids in 2024

*Cost shown does not include cost of land.



OPTION D: AISD would construct phase 1 of a new comprehensive HS #2 and complete a renovation of AHS.



**EXISTING
DNG/AHS**
(3,135)



**PHASE 1
HIGH SCHOOL #2**
(+1,500)
Open 2026-2027



**PHASE 2
HIGH SCHOOL #2**
(+1,500)
Open 2032-2033



AHS RENOVATION
(No capacity increase)
Open 2026-2027

FUTURE BOND
Capacity: 6,135

2023 BOND
Capacity: 4,635



OPTION D

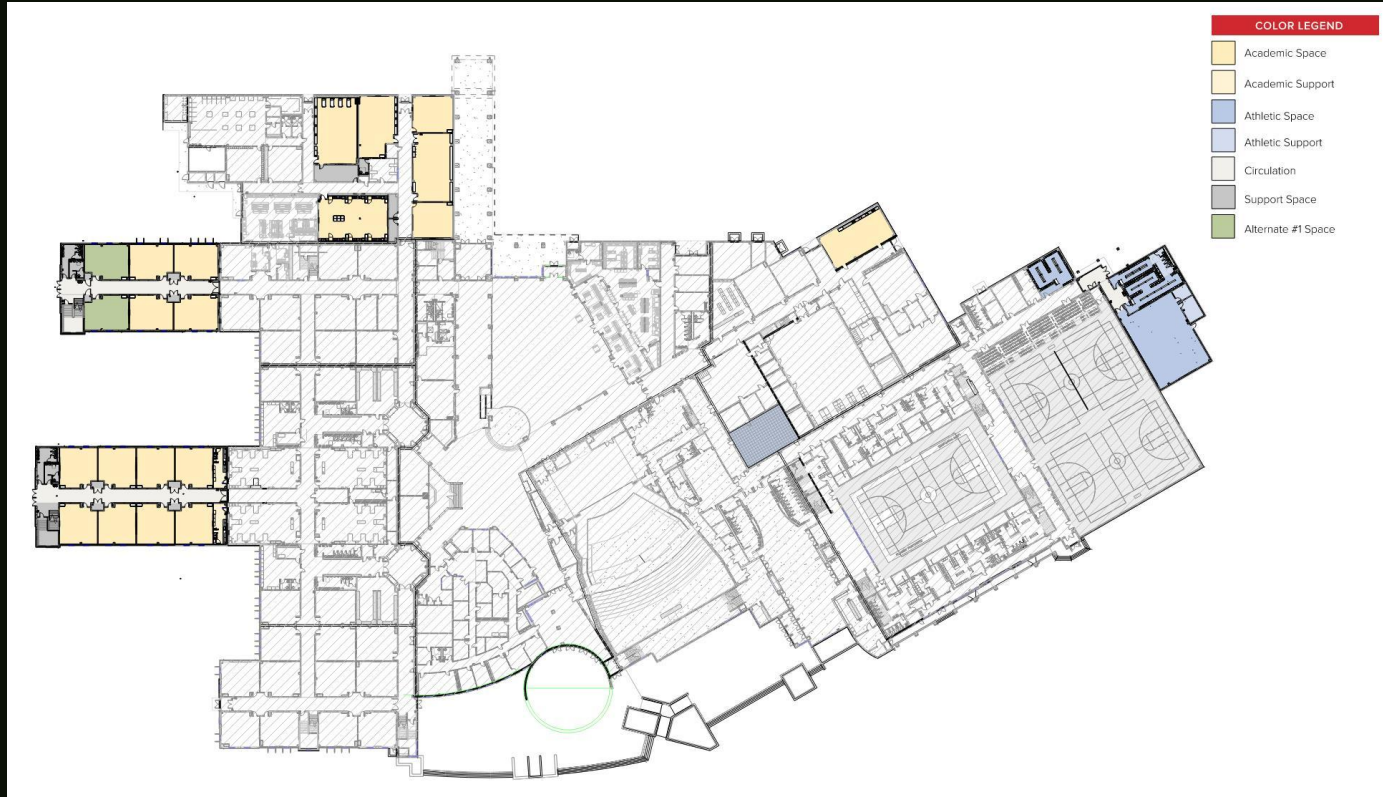
Assumptions

- High School #2 Phase 1 (1,500 capacity):
 - 55% of total (PH1/PH2) square footage accounted for in Phase 1
 - Circulation (hallways) sized for 3,000 student capacity
 - Core spaces (Library, Kitchen, Cafeteria, etc.) sized for 1,500 capacity with planned expansion in Phase 2
 - Baseball, Softball, Practice Fields, Tennis Courts, Indoor Practice Facility, Field Events included
 - Master Planned for expansion
 - Varsity competition stadium not included
- Renovations at AHS will not increase capacity
- Renovations at AHS: update finishes, LED lighting



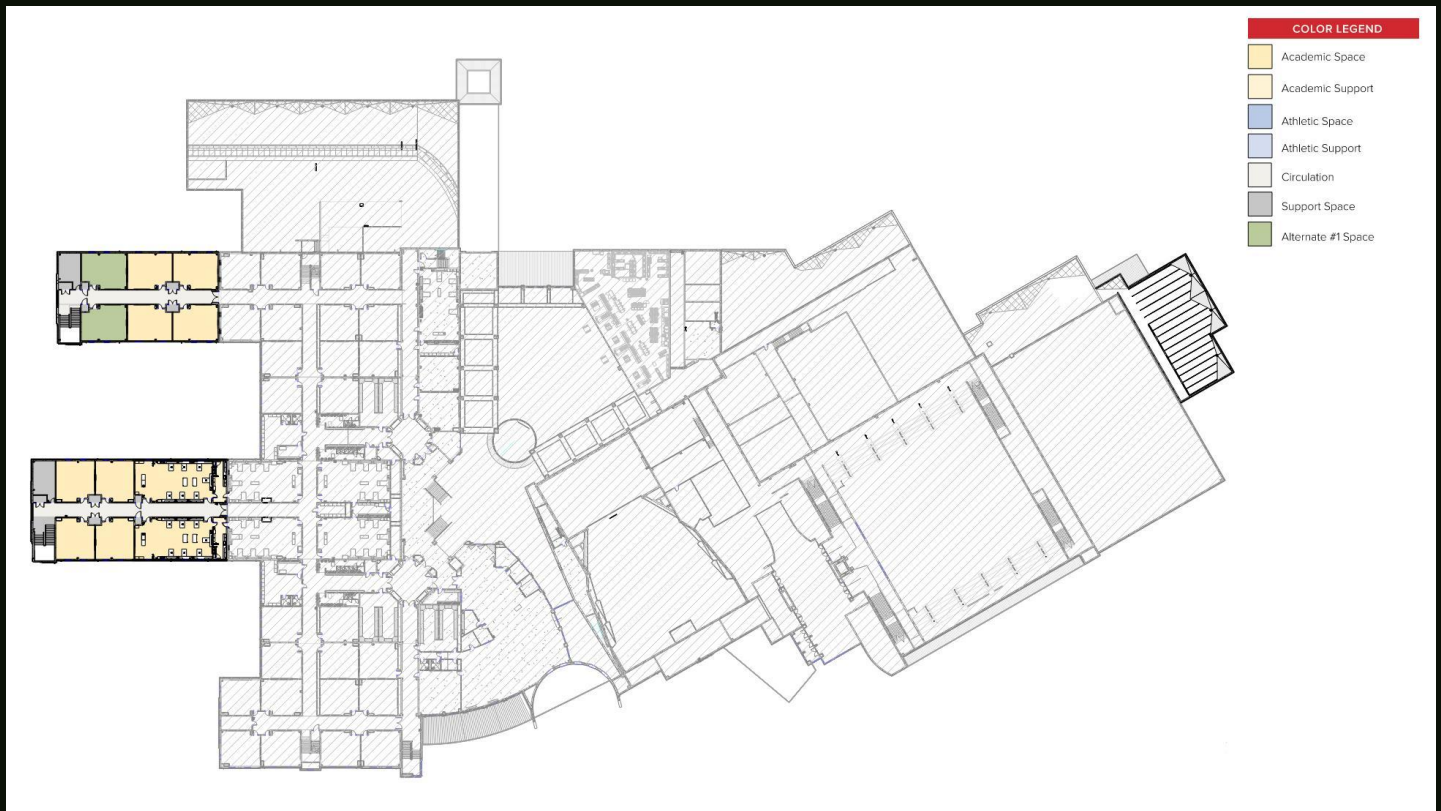
OPTION D

Phase 1 High School #2: Concept



OPTION D

Phase 1 High School #2: Concept



OPTION D

Phase 1 High School #2

Project Dates	2023		2024				2025	2026											
	M	J	J	A	S	O	N	D	J	F	M	A	M	J	J	A	S	O	N
Schematic Design	October 2023																		
Design Development	December 2023																		
Construction Documents	March 2024																		
Jurisdictional Review	May 2024																		
Bidding	May 2024																		
Construction	May 2026																		
Construction Duration	Estimated Square Footage	Total Construction OPC (Escalated)	Soft Costs, Fees, & Contingency	Furniture, Fixtures, & Equipment (FFE)	Total Project Budget OPC														
24 Months	346,500 SF ±	\$201.5M ±	\$34.2M ±	\$8.3M ±	\$244M ±														

*Bids in 2024

*Cost shown does not include cost of land.



OPTION D

AHS Renovation


Project Dates	2023		2024				2025	2026											
	M	J	J	A	S	O	N	D	J	F	M	A	M	J	J	A	S	O	N
Schematic Design	[Bar] October 2023																		
Design Development	[Bar] January 2024																		
Construction Documents	[Bar] April 2024																		
Jurisdictional Review	[Bar] July 2024																		
Bidding	[Bar] June 2024																		
Construction	[Bar] June 2026																		
Construction Duration	Estimated Square Footage	Total Construction OPC (Escalated)	Soft Costs, Fees, & Contingency	Furniture, Fixtures, & Equipment (FFE)	Total Project Budget OPC														
24 Months	AHS	\$41.9M ±	\$6.9M ±	\$3.4M ±	\$52.2M ±														

*Bids in 2024


*Cost shown does not include cost of land.



OPTION E



**EXISTING
DNG/AHS**
(3,135)



AHS ADD/RENO
(+1,000)
Open 2027-2028




**PHASE 1
HIGH SCHOOL #2**
(+1,500)
Open 2026-2027

2023 BOND
Capacity: 5,635



**PHASE 2
HIGH SCHOOL #2**
(+1,500)
Open 2033-2034



DNG → MS#4
(-1,000)
Open 2033-2034

FUTURE BOND
Capacity: 6,135



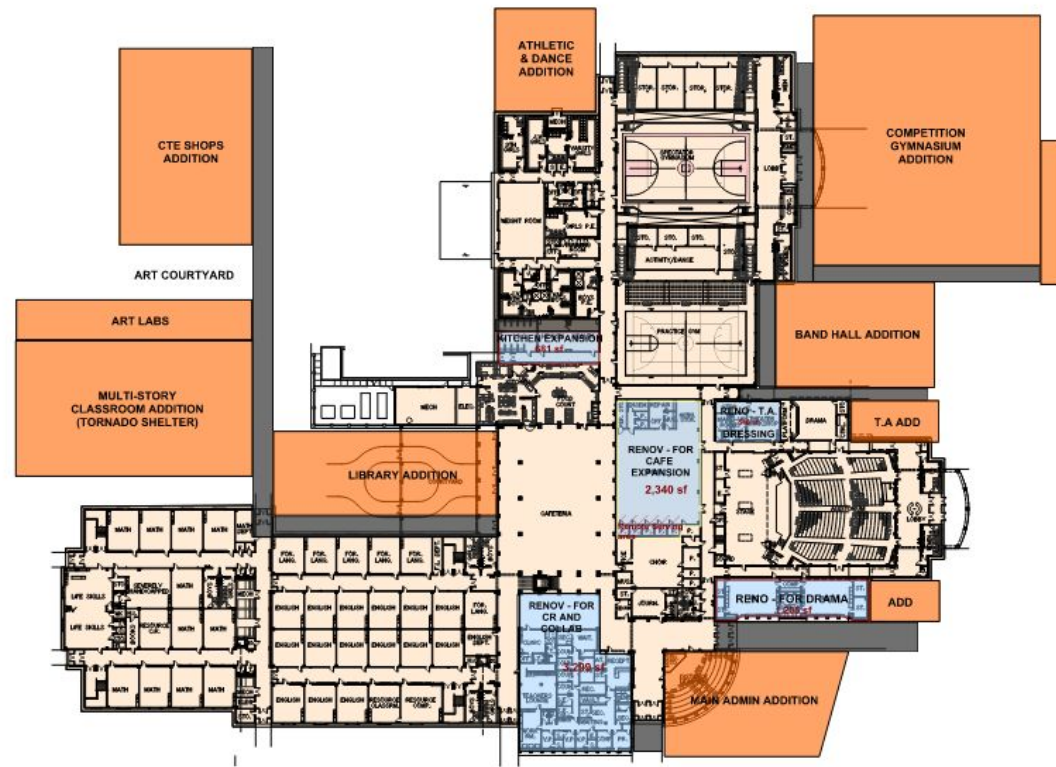
OPTION E

Assumptions

- AHS/DNG be 4000 9-12 for period of time
- Aledo High School Addition & Renovation:
 - Expansion: Library, Kitchen/Cafeteria, Classrooms, Band, Administration, Athletics, Dance, CTE
 - Renovation for collaboration spaces, updated finishes (paint, ceilings, flooring, lighting)
 - Competition gym: 3,000± capacity
- High School #2 Phase 1 (1,500):
 - 55% of total (PH1/PH2) square footage accounted for in Phase 1
 - Circulation sized for 3,000 student capacity
 - Core spaces (Library, Kitchen, Cafeteria, etc.) sized for 3,000 student capacity with planned expansion in Phase 2
 - Baseball, Softball, Practice Fields, Tennis Courts, Indoor Practice Facility, Field Events included
 - Master Planned for expansion

OPTION E

AHS Addition & Renovation: Concept

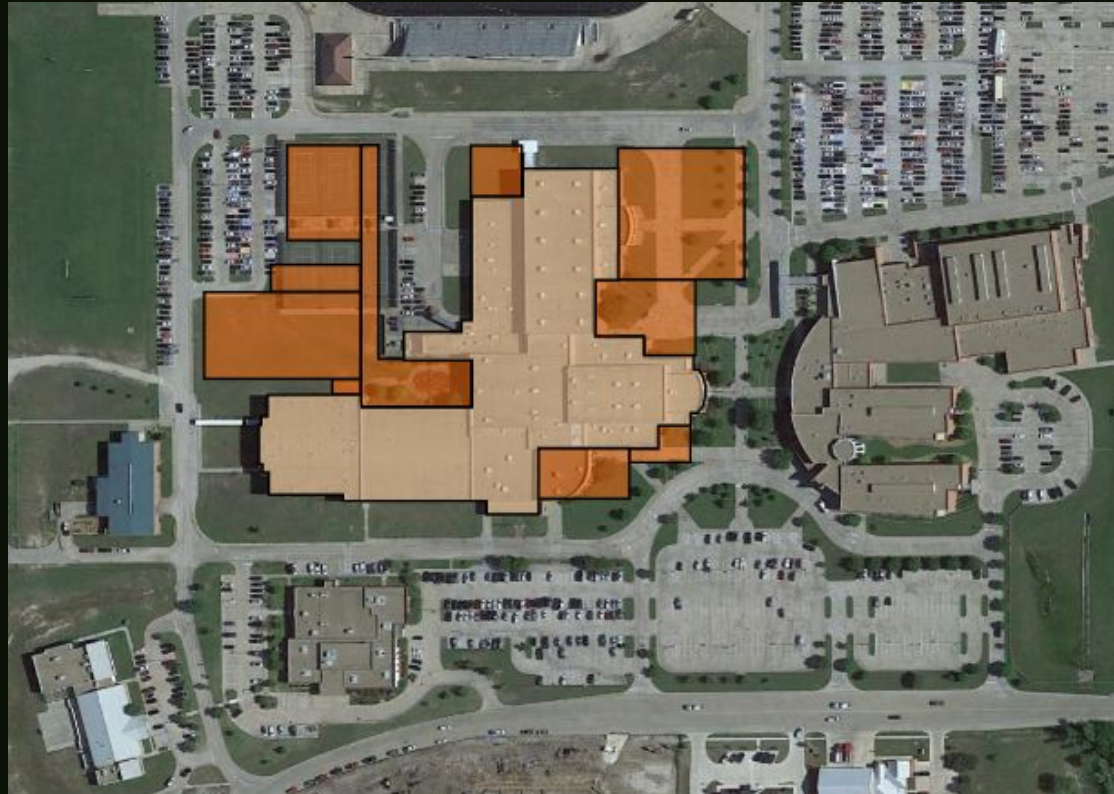




- EXISTING BUILDING
- POSSIBLE ADDITIONS
- POSSIBLE RE-PURPOSE



OPTION E

AHS Addition & Renovation: Concept

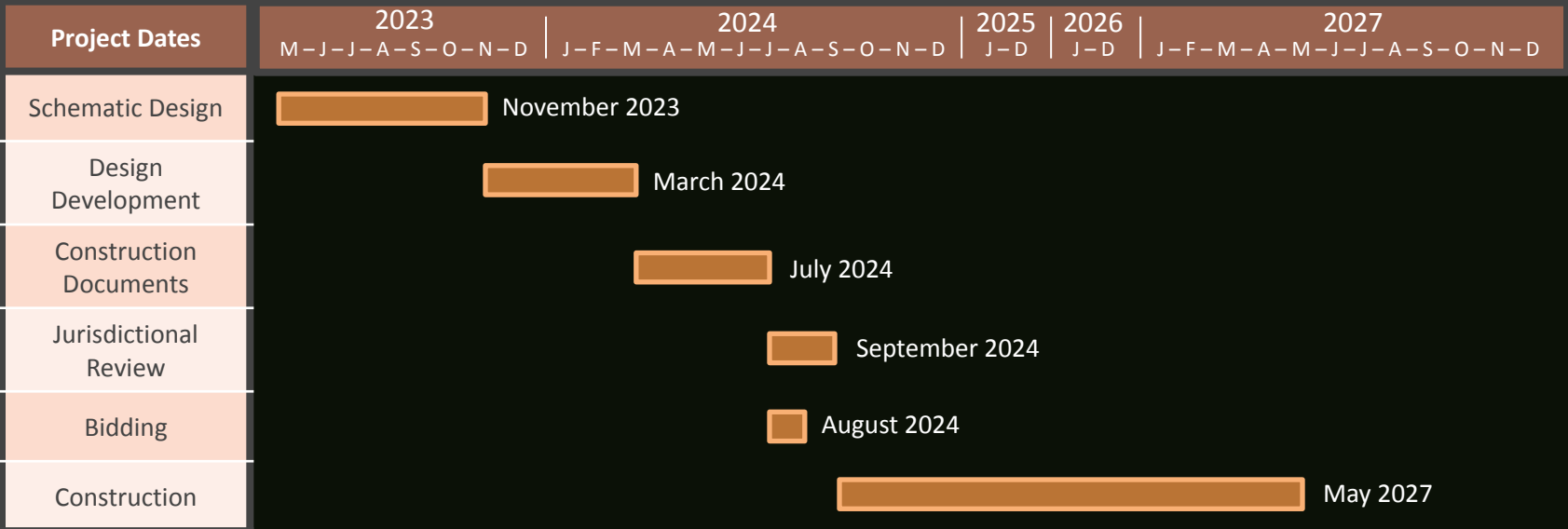


-  EXISTING BUILDING
-  POSSIBLE ADDITIONS



OPTION E

AHS Addition & Reno



Construction Duration	Estimated Square Footage	Total Construction OPC (Escalated)	Soft Costs, Fees, & Contingency	Furniture, Fixtures, & Equipment (FFE)	Total Project Budget OPC
32 Months	237,000 SF ± (Addition)	\$172.6M ±	\$29.8M ±	\$14.2M ±	\$216.6M ±

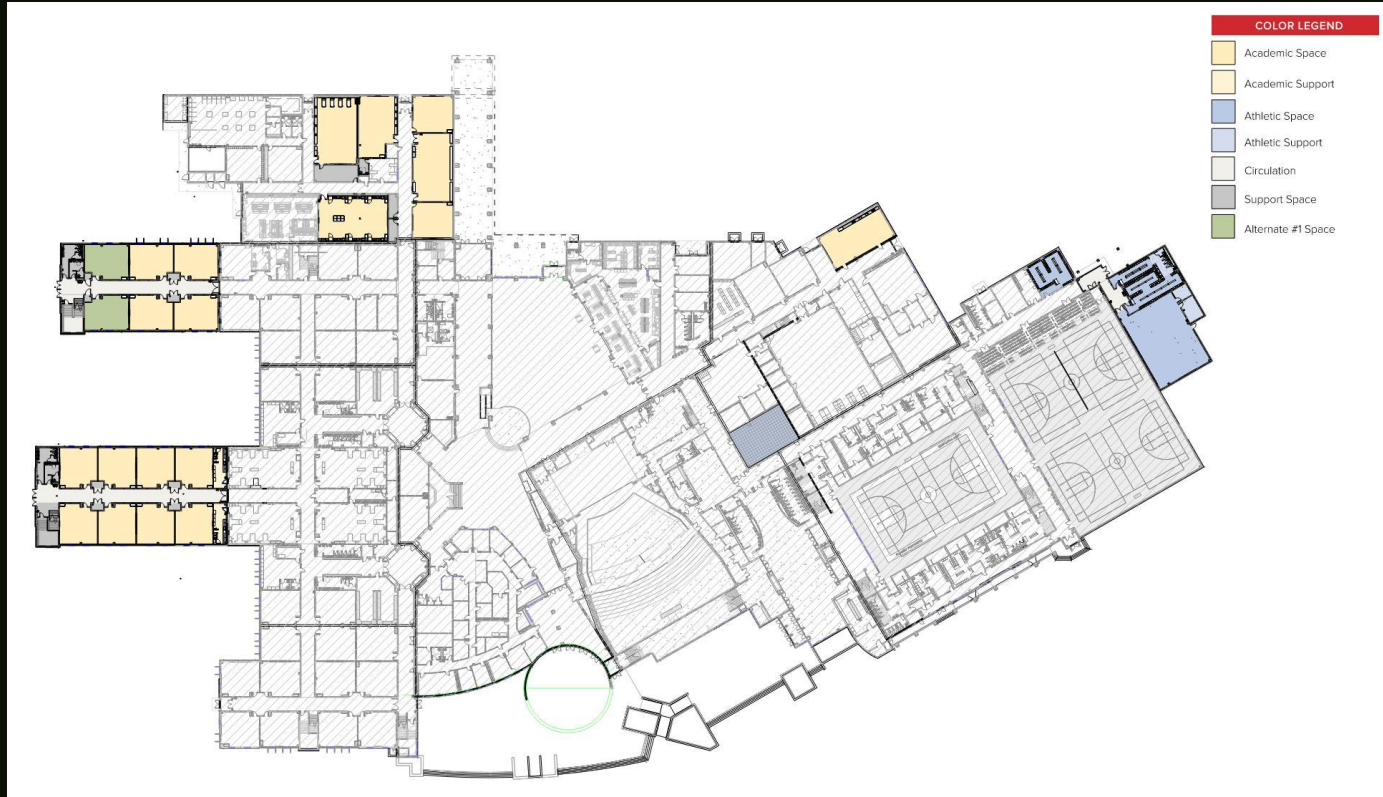
*Bids in 2024

*Cost shown does not include cost of land.



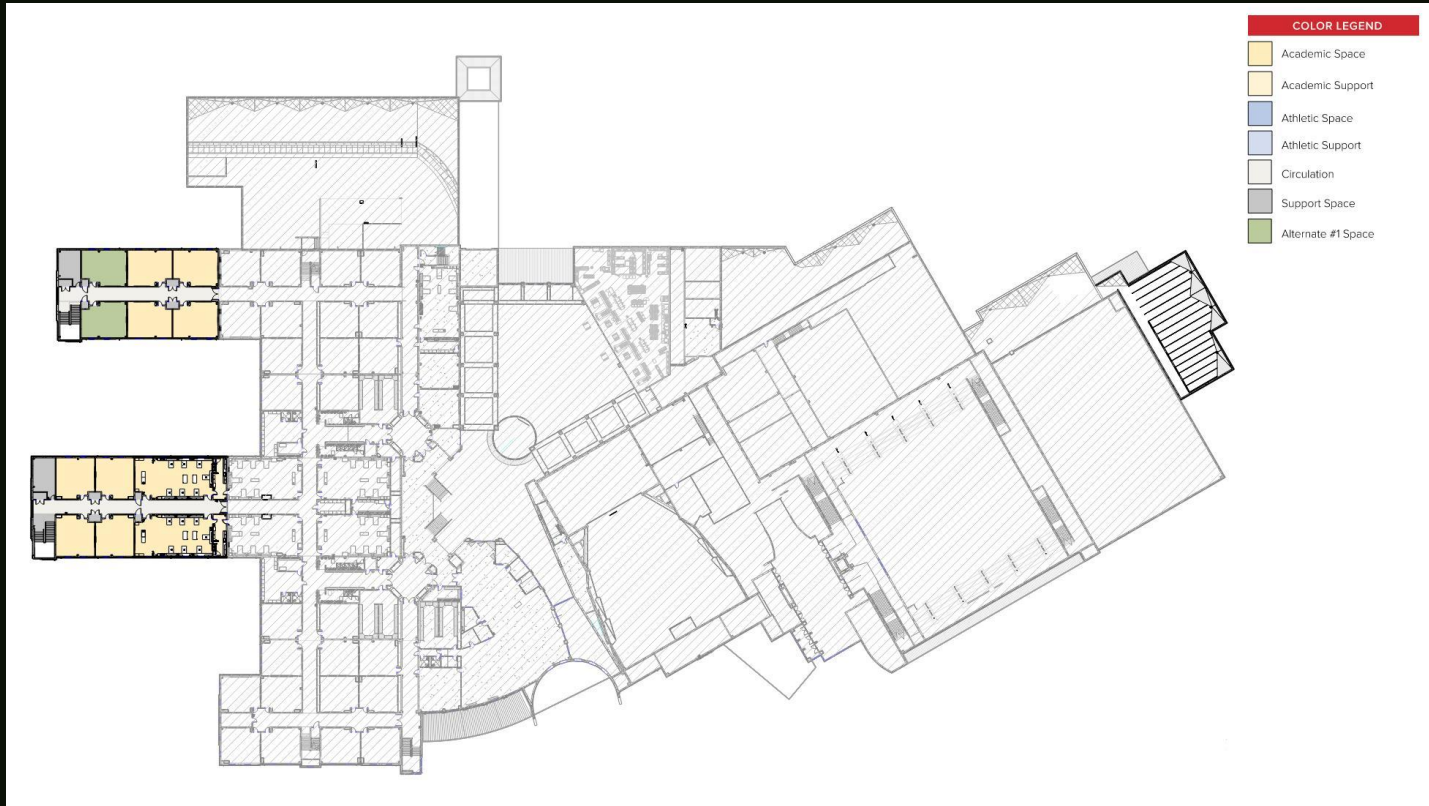
OPTION E

Phase 1 High School #2: Concept



OPTION E

Phase 1 High School #2: Concept



OPTION E

Phase 1 High School #2

Project Dates	2023		2024				2025	2026											
	M	J	J	A	S	O	N	D	J	F	M	A	M	J	J	A	S	O	N
Schematic Design	[Bar] October 2023																		
Design Development	[Bar] December 2023																		
Construction Documents	[Bar] March 2024																		
Jurisdictional Review	[Bar] May 2024																		
Bidding	[Bar] May 2024																		
Construction	[Bar] May 2026																		
Construction Duration	Estimated Square Footage	Total Construction OPC (Escalated)	Soft Costs, Fees, & Contingency	Furniture, Fixtures, & Equipment (FFE)	Total Project Budget OPC														
24 Months	346,500 SF ±	\$201.5M ±	\$34.2M ±	\$8.3M ±	\$244M ±														

*Bids in 2024

*Cost shown does not include cost of land.



High School Options: Summary



High School Options: Summary			
Option	Building Components	Year of Bond Election	Total Project Budget OPC
A	High School #2 + Aledo High School Renovation	2023	\$553.9M ±
B	Aledo High School Addition & Renovation	2023	\$216.6M±
C	New College & Career Academy + Aledo High School Minor Renovation	2023	\$134.3M±
D	Phase 1 of High School #2 + Aledo High School Renovation	2023	\$296.2M ±
E	Aledo High School Addition & Renovation + Phase 1 of High School #2	2023	\$460.6M±

Reflection/Discussion/Report/ Rethink (RDRR) Process

Process will take 2 meetings

Reminder:

Any other options created by the committee will be added and studied (add, combine, create, delete)



Reflection/Discussion/Report/ Rethink (RDRR) Process (STEPS)

1. Individual **reflection**
2. Group **discussion**
3. Group **report**
4. Individual **rethink**



Reflection/Discussion/Report/ Rethink (RDRR) Process

Considering each option through each of 4 lenses, then as a whole

1. Academic opportunities
2. Co-curricular opportunities
3. Capacity/growth
4. Finance



Reflection/Discussion/Report/ Rethink (RDRR) Process

Roles:

- Facilitator
- Reporters (2)
- Time keeper



Reflection/Discussion/Report/ Rethink (RDRR) Process

We will ask you to repeat the RDRR process for each of the 4 lenses:

1. Academic opportunities
2. Co-curricular opportunities
3. Capacity/growth
4. Finance

Then we will ask you to review the options broadly



Reflection/Discussion/Report (RDR) Process

Tonight's lenses:

- capacity/growth
- finance



Reflection/Discussion/Report (RDR) Process

capacity/growth lens



RDRR Process (STEP 1)



10:00

1. Individual **reflection**

- 10 minutes
- Consider each option through one lens at a time
- Consider these through the **capacity/growth lens**:
 - *creating the most capacity for the longest period of time*
 - *providing the most flexibility to handle growth*
- Record the score and provide written feedback
- You will be able to revise if you'd like after the group discussion
- Want to see another option? Write it on the “other option” worksheet.



A digital timer graphic showing '20:00' in white text on a black background, with a colorful geometric pattern behind it.

2. Group **discussion**

- 20 minutes
- Facilitator will record
- Answer these questions related to **capacity/growth** as a group:
 - *Which option creates the most capacity for the longest period of time? Why?*
 - *Which model provides the most flexibility to handle growth? Why?*
- Share any questions for recording by facilitator
- Share any other options or adjustments to the options that you would like more info about



10:00

3. Group **report**

- 10 minutes
- Choose 2 reporters (1 for each question)
- Each group will report to the large group the answers to these questions related to **capacity/growth**:
 - *Which option creates the most capacity for the longest period of time? Why?*
 - *Which model provides the most flexibility to handle growth? Why?*



RDRR Process (STEP 4)



5:00

4. Individual **rethink**

- 5 minutes
- Individually, look back at the ratings and comments that you marked on your worksheet and indicate if you made any adjustments after discussions/reports in the box marked
- We will synthesize the individual reports and provide that synthesized information to the group



Reflection/Discussion/Report (RDR) Process

finance lens



RDRR Process (STEP 1)

10:00

1. Individual **reflection**

- 10 minutes
- Consider each option through one lens at a time
- Consider these through the **finance lens**:
 - *providing the most value as related to cost*
 - *What is realistic given project cost and potentially available funding?*
- Record the score and provide written feedback
- You will be able to revise if you'd like after the group discussion
- Want to see another option? Write it on the “other option” worksheet.



A digital timer graphic showing '20:00' in white text on a black background, with a colorful geometric pattern of triangles in shades of green, blue, and orange behind the text.

2. Group **discussion**

- 20 minutes
- Facilitator will record
- Answer these questions related to **finance** as a group:
 - *Which option provides the most value as related to the cost? Why?*
 - *Which option is most realistic given project cost and potentially available funding? Why?*
- Share any questions for recording by facilitator
- Share any other options or adjustments to the options that you would like more info about



10:00

3. Group **report**

- 10 minutes
- Choose 2 reporters (1 for each question)
- Each group will report to the large group the answers to these questions related to **finance**:
 - *Which option provides the most value as related to the cost? Why?*
 - *Which option is most realistic given project cost and potentially available funding? Why?*



RDRR Process (STEP 4)



5:00

4. Individual **rethink**

- 5 minutes
- Individually, look back at the ratings and comments that you marked on your worksheet and indicate if you made any adjustments after discussions/reports in the box marked
- We will synthesize the individual reports and provide that synthesized information to the group



NEXT MEETING:

November 7th

