

3 Steps to Accessing **SAT** Suite of Assessments Results

FOR STUDENTS

1 CREATE A COLLEGE BOARD ACCOUNT

You'll need a College Board account to view scores and access college and career planning tools. Sign up or, if you already have an account, just sign in at **studentscores.collegeboard.org**.

- To prevent duplicate accounts, use the same information that was used on the student's answer sheet, use a standard naming convention and an easy-to-remember password (e.g., date of birth or school mascot).
- Tools are available on the website to retrieve forgotten passwords and usernames.
- Customer service support is available at 866-756-7346 if you need to merge multiple accounts.
- You can log on to view your scores directly at **studentscores.collegeboard.org**.

2 CREATE A KHAN ACADEMY ACCOUNT

Make sure you have a Khan Academy[®] account to link your scores and get free SAT[®] practice: **satpractice.org**.

3 DOWNLOAD THE DAILY PRACTICE FOR THE NEW SAT APP

By downloading the Daily Practice for the New SAT app to a smartphone, you can make practice part of your routine—any place, anytime: **sat.org/scoring**.

Connect to Free **SAT** Practice on Your Phone

FOR STUDENTS

Daily Practice for the New SAT

One Question a Day, Zero Excuses

Make practice part of your routine—any place, any time. Answer a question a day on the Daily Practice for the New SAT® app and get immediate feedback. The free app makes it easy to:

- Answer an exclusive, official reading, writing and language, or math question.
- Reveal a hint if you're stuck.
- Read explanations for the answers and learn from your mistakes.
- Keep at it—daily practice can only sharpen your skills.

Instant Practice Test Scoring

Simulate test day and take the SAT on paper. Then—for the first time ever—take a picture of your answer sheet and get an instant score.

Download the Practice Test and Answer Sheet

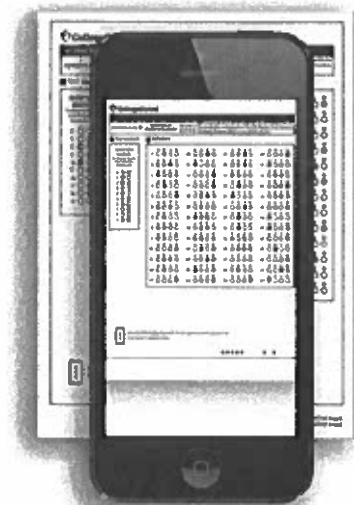
Download the practice test and answer sheet at sat.org/scoring or remove the answer sheet from *The Official SAT Study Guide™*.

1. Take the test.
2. Open the app and sign in to Scan + Score.
3. Take photos of your answer sheet.

Get Your Scores Immediately!

Connect to Khan Academy® for free, personalized practice.

Download the App for Your iPhone or Android Device.



Take a picture of your answer sheet to get an instant score.

Connect to Free **SAT** Practice on Khan Academy

FOR STUDENTS

Prepare for the SAT® with Official SAT Practice on Khan Academy.

Get personalized practice recommendations based on your PSAT/NMSQT®, PSAT™ 10, and PSAT™ 8/9 results. Take these steps to link your College Board and Khan Academy® accounts:

1 SATPRACTICE.ORG

Log in to or create your Khan Academy account.

2 LINK YOUR ACCOUNTS

When prompted, agree to link your Khan Academy and College Board accounts.

3 SEND YOUR SCORES

Sign in to or create your College Board account and hit "Send" to send your scores.

4 SIGN UP. LINK UP. GET PRACTICING. SATPRACTICE.ORG

Sample PSAT/NMSQT Paper Score Report

FOR STUDENTS

What Are Ima's Scores?

Ima's Evidence-Based Reading and Writing score is 430 and Math is 530. In Evidence-Based Reading and Writing, Ima's score is approaching the benchmark, but she is not quite on track for college readiness. In Math, however, Ima is exceeding the benchmark and is on track. Test scores, cross-test scores, and subscores can give Ima a better understanding of areas to work on.

How Will Ima Do on the SAT?

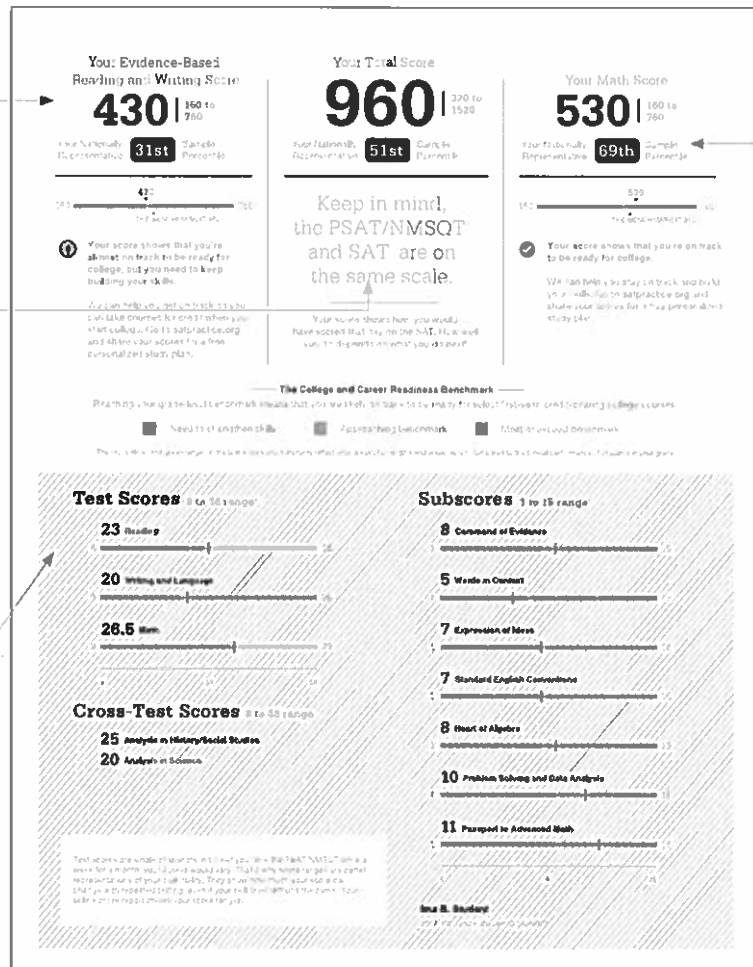
The PSAT/NMSQT® and SAT® are on the same scale; therefore, if Ima had taken the SAT instead of the PSAT/NMSQT on the same test date, she would have received an equivalent score. When Ima takes the SAT, she will likely have had additional learning from school and practice. If Ima challenges herself, she can affect the result of her SAT score.

What Are Her Score Ranges?

No test measures precisely what someone knows, and many factors can affect results. That is why test makers think of each score as a range that extends from a few points below to a few points above the score earned.

What Are Her Score Percentiles?

Since Ima is in the 10th grade, the percentiles compare her scores with those of all 10th graders in the nation. (If she were in the 11th grade, she would be compared to all 11th graders) Ima scored as well as or better than 51% of a nationally representative group of sophomores. In Math, she scored as well as or better than 69% of a nationally representative group of sophomores. Additional percentiles are available in Ima's online score report.



National Merit Scholarship Corporation

Your NMSC Selection Index
139

Entry Requirements
3000 SAT Score (with/without Essay)
SAT Essay (optional)
2014

Eligibility Information
U.S. citizen or permanent resident
High school senior
U.S. born or born in U.S. territory
U.S. born and U.S. citizen or permanent resident
U.S. born and U.S. citizen or permanent resident
U.S. born and U.S. citizen or permanent resident

Your Scores: Next Steps
Additional skills and improvement suggestions can be found in your online score report.

Reading Test
23

Writing and Language Test
20

Math Test
26.5

Get more next steps online
SAT Practice
AP and Coursework
Register for the SAT

Will Ima Be Able to Enter the National Merit® Scholarship Program?
Ima has an NMSC Selection Index of 139, which is double the sum of her Reading (23), Writing and Language (20), and Math (26.5) Test scores. This index is used by the National Merit Scholarship Corporation to designate students to be recognized in its National Merit Scholarship Program. Since an asterisk appears next to Ima's score, it means she does not meet entry requirements for the program. However, even if Ima met entry requirements, her score is not likely to take her further in the competition for awards. For entry requirements and information on how the competition works, see the *Fall 2017 PSAT/NMSQT Student Guide* or visit nationalmerit.org.

How Can Ima Improve Her Academic Skills?
Your Scores: Next Steps is based on her test scores, and on what general skills similar performing students understand. Ima can see which skills she performed well on and which she needs to improve. When she goes online and logs in to the full report online, she can see additional skills and improvement steps. Ima can also link her account to Khan Academy® for personalized practice recommendations.

What Are Ima's Next Steps?
Under "Get more next steps online," Ima is directed to studentscores.collegeboard.org to learn how to prepare for the SAT and see her potential for AP® coursework.

When Should Ima Take the SAT?
As a sophomore, Ima should begin planning when she will take the SAT. Most students take the SAT for the first time in their junior year. By planning now, Ima can ensure she has adequate time to practice for the SAT. She can register for the test and take advantage of practice resources by visiting studentscores.collegeboard.org.

What Can We Learn from Ima's Answers?
The score report is designed to be used with the student's PSAT/NMSQT test booklet. It lists all of Ima's answers and allows her to see the correct answer and difficulty level for each question. Ima can use her online score report to review the questions she answered incorrectly or omitted, and see detailed answer explanations explaining why her responses were correct or incorrect.

Your Question-Level Feedback

Reading, Writing and Language, Math Test-Calculator

| Q# | Answer | Difficulty | Correct | Incorrect | Unanswered |
|-----|--------|------------|---------|-----------|------------|
| 1 | A | 200 | ✓ | | |
| 2 | B | 200 | | ✓ | |
| 3 | C | 200 | | | ✓ |
| 4 | D | 200 | | | ✓ |
| 5 | A | 200 | ✓ | | |
| 6 | B | 200 | | ✓ | |
| 7 | C | 200 | | | ✓ |
| 8 | D | 200 | | | ✓ |
| 9 | A | 200 | ✓ | | |
| 10 | B | 200 | | ✓ | |
| 11 | C | 200 | | | ✓ |
| 12 | D | 200 | | | ✓ |
| 13 | A | 200 | ✓ | | |
| 14 | B | 200 | | ✓ | |
| 15 | C | 200 | | | ✓ |
| 16 | D | 200 | | | ✓ |
| 17 | A | 200 | ✓ | | |
| 18 | B | 200 | | ✓ | |
| 19 | C | 200 | | | ✓ |
| 20 | D | 200 | | | ✓ |
| 21 | A | 200 | ✓ | | |
| 22 | B | 200 | | ✓ | |
| 23 | C | 200 | | | ✓ |
| 24 | D | 200 | | | ✓ |
| 25 | A | 200 | ✓ | | |
| 26 | B | 200 | | ✓ | |
| 27 | C | 200 | | | ✓ |
| 28 | D | 200 | | | ✓ |
| 29 | A | 200 | ✓ | | |
| 30 | B | 200 | | ✓ | |
| 31 | C | 200 | | | ✓ |
| 32 | D | 200 | | | ✓ |
| 33 | A | 200 | ✓ | | |
| 34 | B | 200 | | ✓ | |
| 35 | C | 200 | | | ✓ |
| 36 | D | 200 | | | ✓ |
| 37 | A | 200 | ✓ | | |
| 38 | B | 200 | | ✓ | |
| 39 | C | 200 | | | ✓ |
| 40 | D | 200 | | | ✓ |
| 41 | A | 200 | ✓ | | |
| 42 | B | 200 | | ✓ | |
| 43 | C | 200 | | | ✓ |
| 44 | D | 200 | | | ✓ |
| 45 | A | 200 | ✓ | | |
| 46 | B | 200 | | ✓ | |
| 47 | C | 200 | | | ✓ |
| 48 | D | 200 | | | ✓ |
| 49 | A | 200 | ✓ | | |
| 50 | B | 200 | | ✓ | |
| 51 | C | 200 | | | ✓ |
| 52 | D | 200 | | | ✓ |
| 53 | A | 200 | ✓ | | |
| 54 | B | 200 | | ✓ | |
| 55 | C | 200 | | | ✓ |
| 56 | D | 200 | | | ✓ |
| 57 | A | 200 | ✓ | | |
| 58 | B | 200 | | ✓ | |
| 59 | C | 200 | | | ✓ |
| 60 | D | 200 | | | ✓ |
| 61 | A | 200 | ✓ | | |
| 62 | B | 200 | | ✓ | |
| 63 | C | 200 | | | ✓ |
| 64 | D | 200 | | | ✓ |
| 65 | A | 200 | ✓ | | |
| 66 | B | 200 | | ✓ | |
| 67 | C | 200 | | | ✓ |
| 68 | D | 200 | | | ✓ |
| 69 | A | 200 | ✓ | | |
| 70 | B | 200 | | ✓ | |
| 71 | C | 200 | | | ✓ |
| 72 | D | 200 | | | ✓ |
| 73 | A | 200 | ✓ | | |
| 74 | B | 200 | | ✓ | |
| 75 | C | 200 | | | ✓ |
| 76 | D | 200 | | | ✓ |
| 77 | A | 200 | ✓ | | |
| 78 | B | 200 | | ✓ | |
| 79 | C | 200 | | | ✓ |
| 80 | D | 200 | | | ✓ |
| 81 | A | 200 | ✓ | | |
| 82 | B | 200 | | ✓ | |
| 83 | C | 200 | | | ✓ |
| 84 | D | 200 | | | ✓ |
| 85 | A | 200 | ✓ | | |
| 86 | B | 200 | | ✓ | |
| 87 | C | 200 | | | ✓ |
| 88 | D | 200 | | | ✓ |
| 89 | A | 200 | ✓ | | |
| 90 | B | 200 | | ✓ | |
| 91 | C | 200 | | | ✓ |
| 92 | D | 200 | | | ✓ |
| 93 | A | 200 | ✓ | | |
| 94 | B | 200 | | ✓ | |
| 95 | C | 200 | | | ✓ |
| 96 | D | 200 | | | ✓ |
| 97 | A | 200 | ✓ | | |
| 98 | B | 200 | | ✓ | |
| 99 | C | 200 | | | ✓ |
| 100 | D | 200 | | | ✓ |

See the questions, and the answer explanations, online studentscores.collegeboard.org

Subscores
CRW: Critical Reading
LRC: Language
ECW: Evidence-Based Reading and Writing
MATH: Math (No Calculator)
PSS: Problem Solving
CROSS-TEST SCORE
CRW: Critical Reading
LRC: Language
ECW: Evidence-Based Reading and Writing
MATH: Math (No Calculator)

© 2017 The College Board. PSAT/NMSQT is a registered trademark of the College Board and National Merit Scholarship Corporation. National Merit and the corporate "Lamp of Learning" logo are federally registered service marks of National Merit Scholarship Corporation.
Khan Academy is a registered trademark in the United States and other jurisdictions.