



BUDGET PUBLIC HEARING SALEM SCHOOL APRIL 12, 2023 AT 7:00 PM



Please see highlights from the budget process below.
All BOE budget information can be found by [clicking here](#).

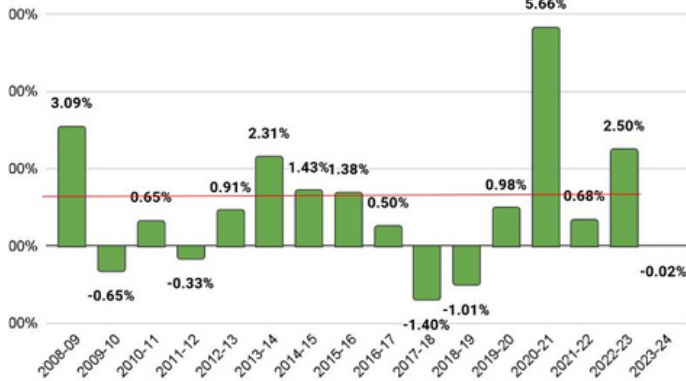


Enrollment
projections
from NESDEC.
Current PK-8
enrollment is
401.

Projected Enrollment in Grade Combinations*									
Year	K-4	PK-4	K-5	PK-5	K-8	PK-8	5-8	5-12	9-12
2022-23	200	222	243	265	374	396	174	335	161
2023-24	205	227	247	269	381	403	176	327	151
2024-25	203	225	258	280	392	414	189	345	156
2025-26	209	231	244	266	391	413	182	345	163
2026-27	219	241	265	287	405	427	186	355	169
2027-28	240	262	267	289	412	434	172	343	171
2028-29	244	266	290	312	404	426	160	345	185
2029-30	237	259	293	315	417	439	180	359	179
2030-31	247	269	287	309	421	443	174	356	182
2031-32	239	261	297	319	447	469	208	373	165
2032-33	241	263	288	310	451	473	210	366	156

Average 1.11% Increase year over year for the last 15 year

Salem BOE Approved Budget History



Town by Town Comparison

