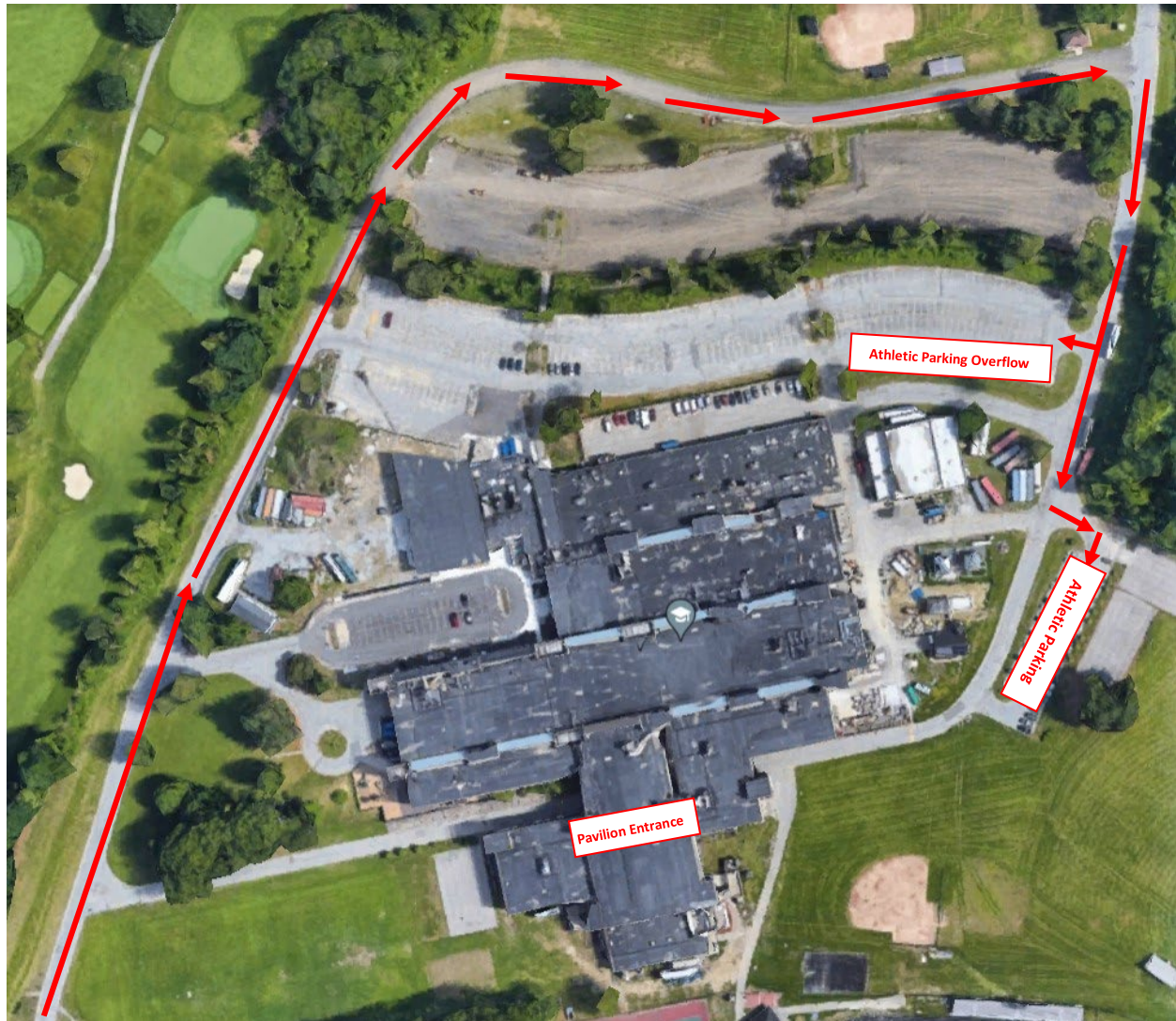


ATHLETIC EVENT PARKING DIRECTIONS:

GREATER LOWELL TECHNICAL HIGH SCHOOL



FROM THE NORTH:

Take Route US-3 S (Everett Turnpike).

Follow US-3 S (Everett Turnpike) to Exit 90 (MA-113 E) in Tyngsborough.

At end of exit, keep **right** at fork and merge onto MA-113 E.

Continue on MA-113 (Pawtucket Blvd.)

Turn slight right into 'Jug Handle' to enter straight into main entrance.

FROM THE SOUTH:

Take Route US-3 N (Everett Turnpike).

Follow US-3 N (Everett Turnpike) to Exit 84 for MA-4 toward N Chelmsford/Chelmsford.

Keep right, follow signs for Drum Hill Rd/Lowell and merge onto Drum Hill Rd.

Continue on Drum Hill Rd/Westford St./Wood St.

Continue straight onto Rourke Bridge.

Turn left onto MA-113W/Pawtucket Blvd.

Turn slight right to enter main entrance.