

The background is a light gray grid with various hand-drawn blue doodles. These include several overlapping circles and loops at the top, a wavy line at the bottom center, and several checkmarks at the bottom right. There are also some abstract scribbles and lines scattered throughout.

✧ Technology: Assistive & Educational ✧

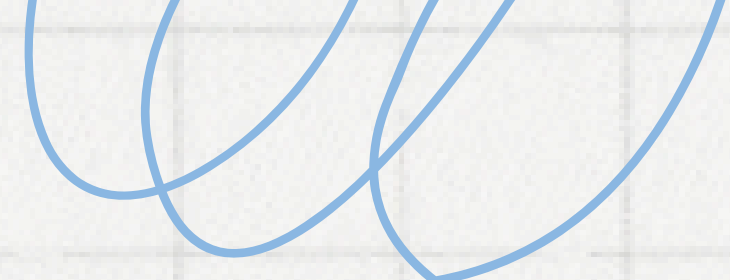

Presented by Samantha Moran

Assistive Technology

Assistive technology device” means any item, piece of equipment, or product system, whether acquired commercially off the shelf, modified, or customized, that is used to increase, maintain, or improve the functional capabilities of a child with a disability.

“Assistive technology service” means any service that directly assists a child with a disability in the selection, acquisition, or use of an assistive technology device.





AT in the IEP

Assistive Technology is
legally **REQUIRED** to be
considered for **ALL**
students on an IEP

01.

Supplementary Aids & Services including Assistive Tech

Beginning on 02/15/2024 and throughout the remainder of the IEP year, Student will be provided communication supports (e.g. voice output, visual support) when communicating with adults and peers in all educational environments.

02.

Accommodations & Modifications

Beginning 2/08/2024 and ending 2/07/2025, in the regular and special education settings, Student will be provided with large print materials (24 pt) for the duration of the assignment.

03.

Supports for School Personnel

Beginning 11/06/2023 and ending 11/05/2024, SLP will provide school staff training at the beginning of the school year and as needed throughout the year on accessing AAC system within the special education setting.

04.

Teacher Planning Tool (Form)

Unique to CKCIE for more specific information about what student is using.

05.

Present Levels & Goals

Use of AT could be described and listed in PLEPs or within goals*





Switches and Switch Toys

Kids with sensory impairments discover they can control sound, light, and vibration. Those with cognitive impairments can engage with toys and computers using just one button, reducing the necessity for complex instructions.



Computer Equipment

- Adaptive mice
- keyboards
- larger monitors
- computer settings
- etc.



Related Service Specific Items

- Pencil Grips
- Walkers
- Magnifiers
- Slant Boards



Miscellaneous

Visual timers, sensory objects such as light toys, vibration rope, textured materials.



Communication Systems

Low and Mid Tech
Options for High Tech Trials and assessment



Services

- Training and Support on currently used AT
- Evaluation for AT needs

CKCIE AT SERVICES

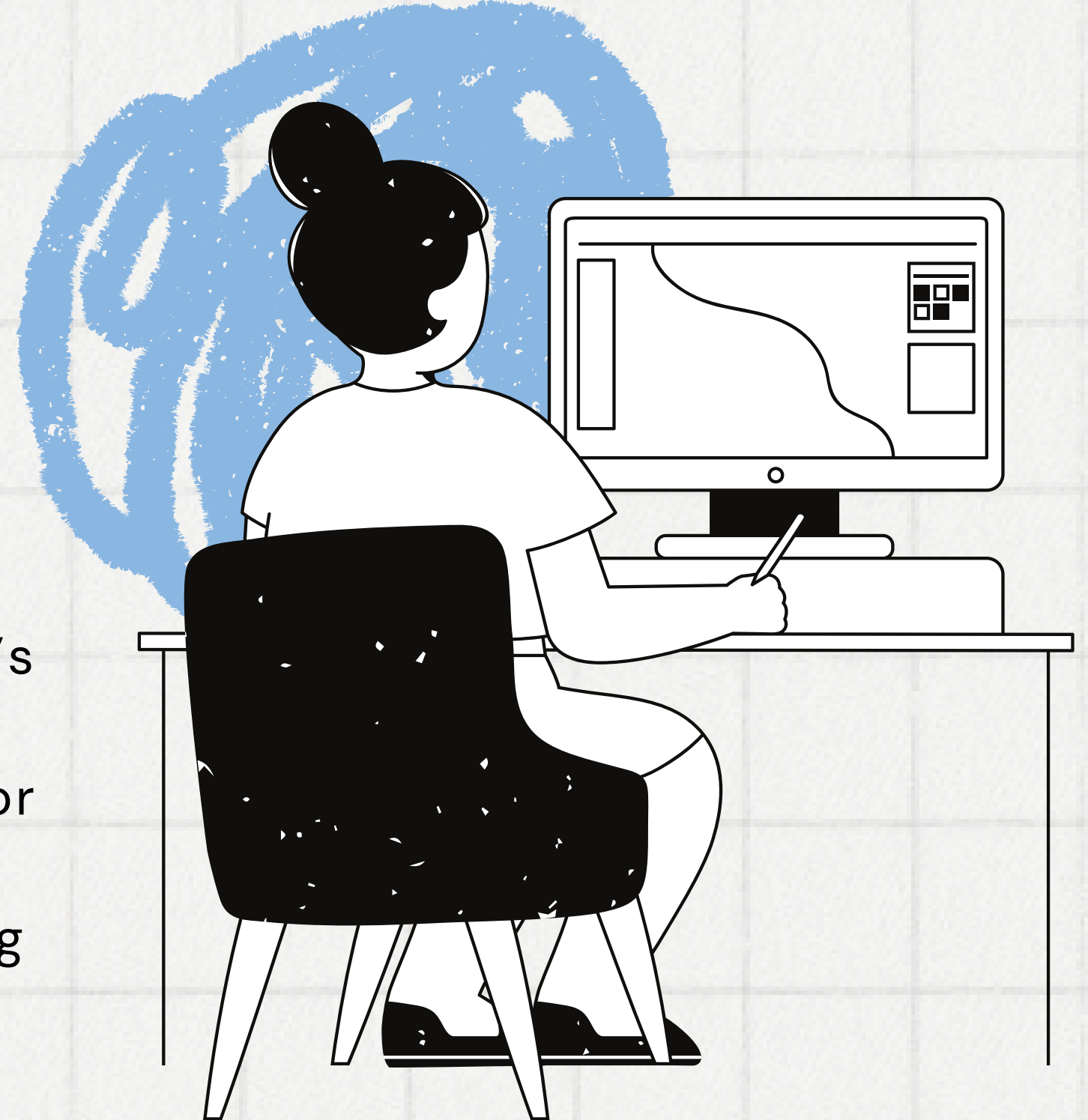
What is available?

HELP!!!

My student has an AT Device and I don't know what to do with it

If the device falls under a related service provider's area of expertise:

1. Visit with that student's provider for that area or the building provider for that area
2. Reach out to the Assistive Tech Specialist using the Assistive Technology Request Form on the CKCIE website*





HELP!!!

**I think my student
could benefit from AT
but I don't know what
would help them or
where to start!**

Fill out the Assistive Technology Request Form
found under Assistive Technology on the CKCIE
Website.

Assistive Tech

**is NOT a one and done...
It is an ongoing process of trial
and error, followed by
adapting as the student learns
and grows**

Teacher Tech

Technology can provide teachers with a range of benefits. It offers various tools and resources that can streamline tasks, boost communication, and facilitate personalized learning or supports.



Google Forms:

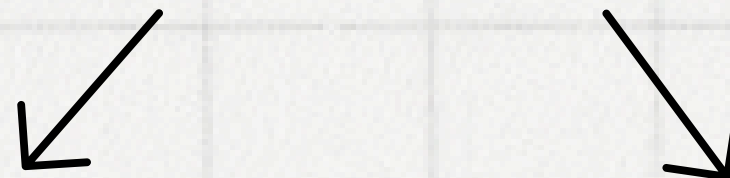
Data collection from Gen Ed(paras):

- time on task
- amount of help needed
- accommodations used
- assistive tech used
- behaviors
- struggles and successes
- social emotional check-ins
- content quizzes



Digital Data

Automate collection, scoring, and grading



Spreadsheets/ GoogleSheets:

Auto calculation of scores

- IEP Goals
- Behaviors
- Etc.

Easy to see graphs of your data

*Links to Google Forms

Google Slides:

"Digitize" paperwork sheets
for online completion

Create interactive activities

Create worksheets or
digital centers*

Rocketbook:

Convert written or
printed text to digital

Material Creation

AI:

Modify materials
Brainstorm ideas
Create Lessons

Unconventional
ways to use tools
you already have

Google Sheets

Printable data sheets

Google Slides:

Templates for day to day plans
Digital Choice Boards

Google Forms:

General Ed feedback
Student feedback
Parent feedback

Organize, Plan & Communicate

AI:

Modify materials
Brainstorm ideas
Create Lessons

Simply your life

Google Sheets

Digital Planners—for Student



Stop! Collaborate and Listen!

- What things would interest you in finding an Ed Tech solution for?
- How have you used technology to make your day to day easier?



**Technology
doesn't
have to be
scary!**