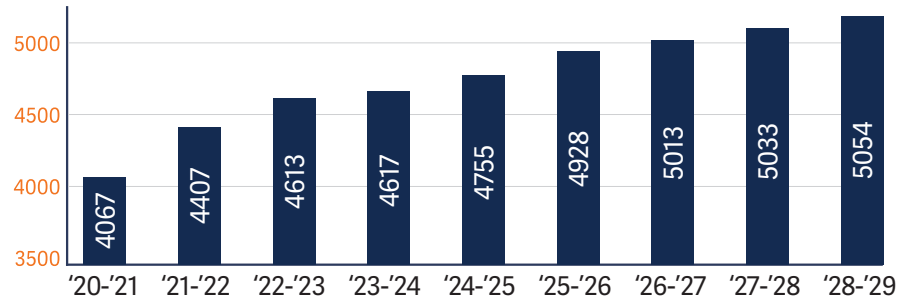


Romoland School District
25900 Leon Road
Homeland, CA 92548

PRSR STD
U.S. POSTAGE
PAID
CORNERSTONE

IMPORTANT INFORMATION FROM ROMOLAND SCHOOL DISTRICT

Current and Projected Enrollment Growth



Frequently Asked Questions about Romoland School District

Serving students in Romoland, Homeland, Perris, and Menifee

What challenges does Romoland School District face?

Our community is growing faster than our facility capacity can handle. Crowded schools make it harder for students to learn and reduce the amount of time teachers get to spend with individual students. We need to continue with upgrading classrooms and building expansion plans that keep up with our growing enrollment numbers.

Is there a plan to address these needs at our local schools?

While no decisions have been made, Romoland School District is exploring placing a \$58.4 million bond measure on the November 2024 ballot to ensure we have the funding needed to address the challenges our District is facing.

Is there any other way to address overcrowding in our schools?

We don't have a lot of options for internal infrastructure funding and can't rely on the State to make these necessary improvements. A local bond measure is the only way to provide the funding and local control necessary to complete the prioritized projects to accommodate our growing student body.

How can we be sure funds from a potential measure would be used responsibly?

A potential school facilities improvement bond measure would include mandatory fiscal accountability requirements including: a citizens' oversight committee, independent public audits, and locally controlled funds.

Para ver esto en español visite www.romoland.net/future

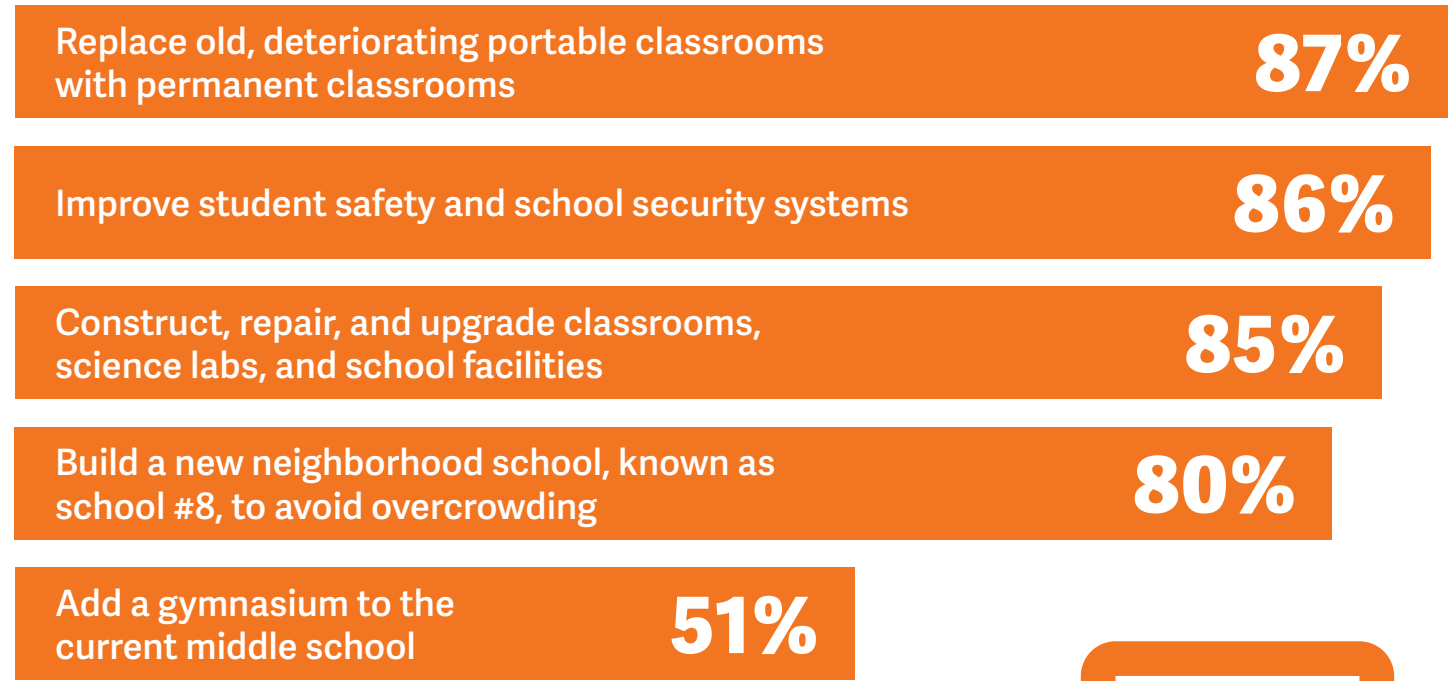
High-Quality Instruction & Facilities are Essential for Our Students' Success

Romoland School District (RSD) is committed to providing excellent education to our over 4,600 students across 6 schools in Romoland, Homeland, Perris, and Menifee. We take pride in providing a high-quality education in a nurturing and challenging environment where all students are empowered to reach their full potential and will be ready for high school, college, and future careers.

The most pressing challenge for our district is overcrowding. Our community is growing fast; from 2020 to 2022 the Romoland School District saw a 10.5% growth in enrollment. That rate of growth is testing the limits of our current schools' capacity and means we must rely on portable classrooms at many of our schools. However, many of them are well past their expected life of 10 years and are now nearly 30 years old. Crowded schools make it harder for students to learn and reduce the amount of time teachers get to spend with individual students.

Your Priorities for our Schools & Growing Community of Students

In early November, the District mailed you a survey describing the importance of local funding and asked you to share your priorities for a potential bond measure. With over 100 survey responses tallied, here is what we heard are the top community priorities for neighborhood schools:








If you would like to learn more or add your thoughts to the conversation, you can still take our survey online by scanning the QR code to the right or visiting www.romoland.net/future.

Upgrading Aging Schools to Meet Today's Standards and Needs

To ensure all students have access to safe and modern educational facilities, the RSD Board of Education is considering placing a \$58.4 million dollar school improvement bond measure on the November 5, 2024 ballot. A potential measure would be limited to \$30 per \$100,000 of a property's assessed (not market) value, or about \$10 a month for a typical homeowner.

Funds from the potential measure could be used to:

-  Construct, repair, and upgrade classrooms, science labs, and school facilities
-  Add a gymnasium to the current middle school
-  Build a new neighborhood school, which will be school #8, to avoid overcrowding
-  Replace old, deteriorating portable classrooms with permanent classrooms
-  Improve student safety and school security systems



Fiscal Accountability and Local Control

Any potential school bond measure would include strict fiscal accountability protections to ensure responsible management of locally controlled funds, including:

- Public disclosures of all spending
- A citizens' oversight committee and independent annual audits
- A detailed project list indicating projects that could be funded with Board of Education approval
- All money raised by the measure would be controlled locally and could not be taken by the State