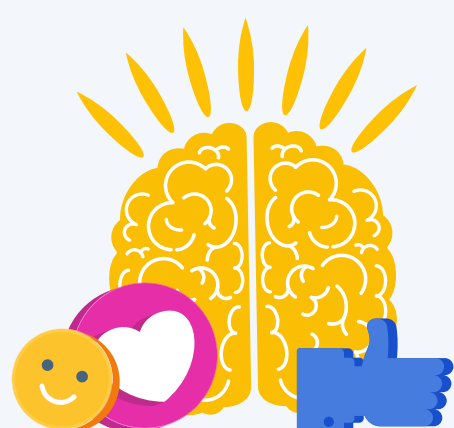


Pupil SERVICES



PBIS

Positive Behavior Interventions and Supports (PBIS) is a proactive approach to defining, teaching, and supporting appropriate student behaviors to create positive school environments.



School Counseling Program

Provide a comprehensive school counseling program aligned with the American School Counselors Association National Standards.

Olweus Bullying Prevention

A system-wide approach to reducing bullying in school. Levels of implementation and support include schoolwide, classroom, individual, and community.



Registration

Families with students currently attending Romoland School District schools are required to **verify student information annually**.

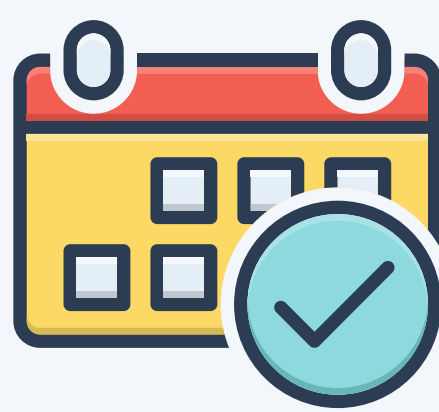
Pupil Services department oversees **registration**. Online enrollment is open and available at all times during the year.

Attendance

Tier 1: Missing Less Than 10% of School (< 1 day per month) Strategies rely on schoolwide steps to encourage attendance among all students.

Tier 2: At Risk of Missing 10-19% of School (2-3 days per month) Interventions target students at greater risk of chronic absenteeism.

Tier 3: At Risk of Missing 20% or More School Days (4+ days per month) Approaches work with most challenged students, often involving other agencies dealing with health, housing, and social services, and typically requiring case management customized to individual student's challenges.

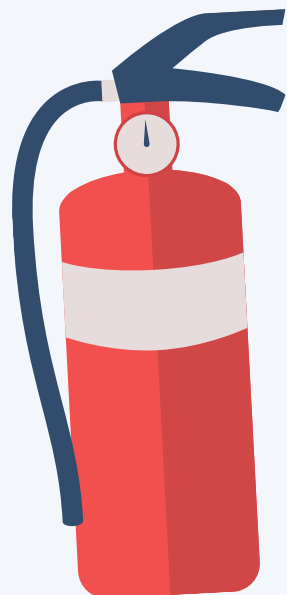


Student Health

RSD supports student health and wellness. A **full-time registered school nurse** oversees the delivery of health care and the daily operation of each health office. All schools have a **full-time health technician or licensed vocational nurse (LVN)** to care for students. **Annual Vision/Hearing** screenings for students at all school sites.

School Engagement, Foster, and McKinney-Vento Supports

School Engagement/Foster Youth Liaison supports school sites to provide students identified as foster or McKinney-Vento (homeless) with resources to ensure they receive equal educational opportunities.



School Safety

Each school has an **Emergency and Disaster Preparedness Plan** which specifies procedures for dealing with a significant emergency or disaster. Each school develops and maintains a comprehensive **school safety plan** with input from school staff, community members, and law enforcement. Each school site undergoes a thorough **safety inspection** each year.

The RSD **Crisis Response Team** is comprised of psychologists, school-based mental health therapists, counselors, district nurses, and Pupil Services staff, provides immediate and ongoing support to school sites during and following a crisis.