

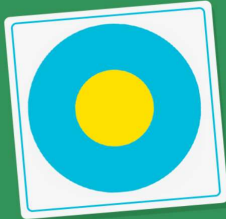


Gulfport School District

Thinking Map Introduction - Pacing Guide

Week 1 July 22-26
Circle Map

The Circle Map



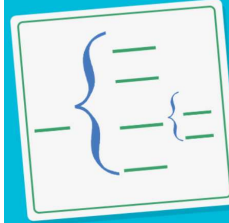
21st Century Learners use the Circle Map to:

- Define
- Brainstorm
- List
- Identify
- Tell everything they know

'What does ____ mean?'
'Can you define ____?'

Week 5 August 19-23
Brace Map

The Brace Map



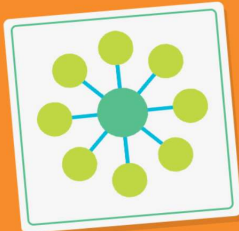
21st Century Learners use the Brace Map to:

- Identify the parts of a whole
- Deconstruct problems
- Show physical components

'Analyze the structural parts of ____ to suggest improvements.'

Week 2 July 29-August 2
Bubble Map

The Bubble Map



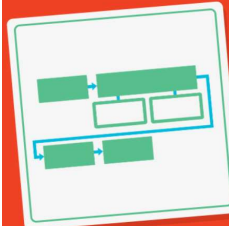
21st Century Learners use the Bubble Map to:

- Describe using adjectives
- Identify characteristics
- Identify properties
- Identify qualities

'How would you describe ____?'

Week 6 August 26-29
Flow Map

The Flow Map



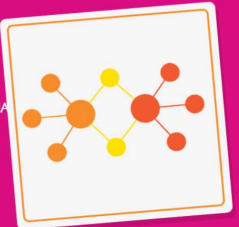
21st Century Learners use the Flow Map to:

- Sequence steps, stages or events
- Order information
- Analyze patterns

'What is the sequence in which these events took place?'
'How would you demonstrate the steps for solving ____?'

Week 3 August 5-9
Bubble Map

The Double Bubble Map



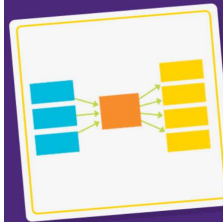
21st Century Learners use the Double Bubble Map to:

- Identify similarities and differences
- Differentiate between characters or objects
- Analyze comparisons and contrasts

'How are ____ and ____ alike/different?'

Week 7 September 3-6
Multi-Flow Map

The Multi-Flow Map



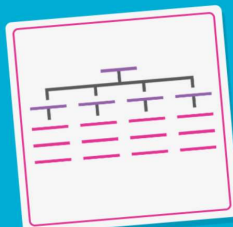
21st Century Learners use the Multi-Flow Map to analyze:

- Causes and effects
- Impacts and/or benefits
- Reasons and/or results
- If...then predictions

'What is the impact of the author's point of view on ____?'
'How would you evaluate the arguments and claims in ____?'
'Why would you choose to do this and what are the short and long-term outcomes?'

Week 4 August 12-16
Tree Map

The Tree Map



21st Century Learners use the Tree Map:

- to classify
- to categorize
- to sort or group
- to give sufficient and related details
- for convergent and divergent thinking

'What is the main idea of ____?'
'What are the supporting details?'

Week 8 September 9-13
Bridge Map

The Bridge Map



21st Century Learners use the Bridge Map to:

- Connect related ideas and relationships
- Understand analogies and metaphors

'What is the relationship between ____ and ____?'
'How would you analyze the relationship in analogous form within ____?'