

GULFPORT SCHOOL DISTRICT THINKING MAP INTRODUCTION



Every Decision. What's Best for Children? Every Time.

TABLE OF CONTENTS

<p>Week 1 July 22-26 Circle Map</p> <p>The Circle Map</p> <p>21st Century Learners use the Circle Map to:</p> <ul style="list-style-type: none"> Define Transform List Identify Tell everything they know <p>What does _____ mean? Can you define _____?</p>	<p>Week 5 August 19-23 Brace Map</p> <p>The Brace Map</p> <p>21st Century Learners use the Brace Map to:</p> <ul style="list-style-type: none"> Identify the parts of a whole Deconstruct problems Show physical components <p>Redesign the structural parts of _____ to suggest improvements.</p>
<p>Week 2 July 29-August 2 Bubble Map</p> <p>The Bubble Map</p> <p>21st Century Learners use the Bubble Map to:</p> <ul style="list-style-type: none"> Describe using adjectives Identify characteristics Identify properties Identify qualities <p>How would you describe _____?</p>	<p>Week 6 August 26-29 Flow Map</p> <p>The Flow Map</p> <p>21st Century Learners use the Flow Map to:</p> <ul style="list-style-type: none"> Sequence steps, stages or events Circle information Analyze patterns <p>What is the sequence in which these events took place? How would you demonstrate the steps for solving _____?</p>
<p>Week 3 August 5-9 Bubble Map</p> <p>The Double Bubble Map</p> <p>21st Century Learners use the Double Bubble Map to:</p> <ul style="list-style-type: none"> Identify similarities and differences Differentiate between characters or objects Analyze comparisons and contrasts <p>How are _____ and _____ alike/different?</p>	<p>Week 7 September 3-6 Multi-Flow Map</p> <p>The Multi-Flow Map</p> <p>21st Century Learners use the Multi-Flow Map to analyze:</p> <ul style="list-style-type: none"> Causes and effects Impacts and/or benefits Reasons and/or results If...then predictions <p>What is the impact of the author's point of view on _____? How would you evaluate the arguments and claims in _____? Why would you choose to do this and what are the short and long term outcomes?</p>
<p>Week 4 August 12-16 Tree Map</p> <p>The Tree Map</p> <p>21st Century Learners use the Tree Map:</p> <ul style="list-style-type: none"> To classify To categorize To sort or group To give sufficient and related details For convergent and divergent thinking <p>What is the main idea of _____? What are the supporting details?</p>	<p>Week 8 September 9-13 Bridge Map</p> <p>The Bridge Map</p> <p>21st Century Learners use the Bridge Map to:</p> <ul style="list-style-type: none"> Connect related ideas and relationships Understand analogies and metaphors <p>What is the relationship between _____ and _____? How would you analyze the relationship in analogous form within _____?</p>

04 Circle Map

05 Bubble Map

06 Double Bubble Map

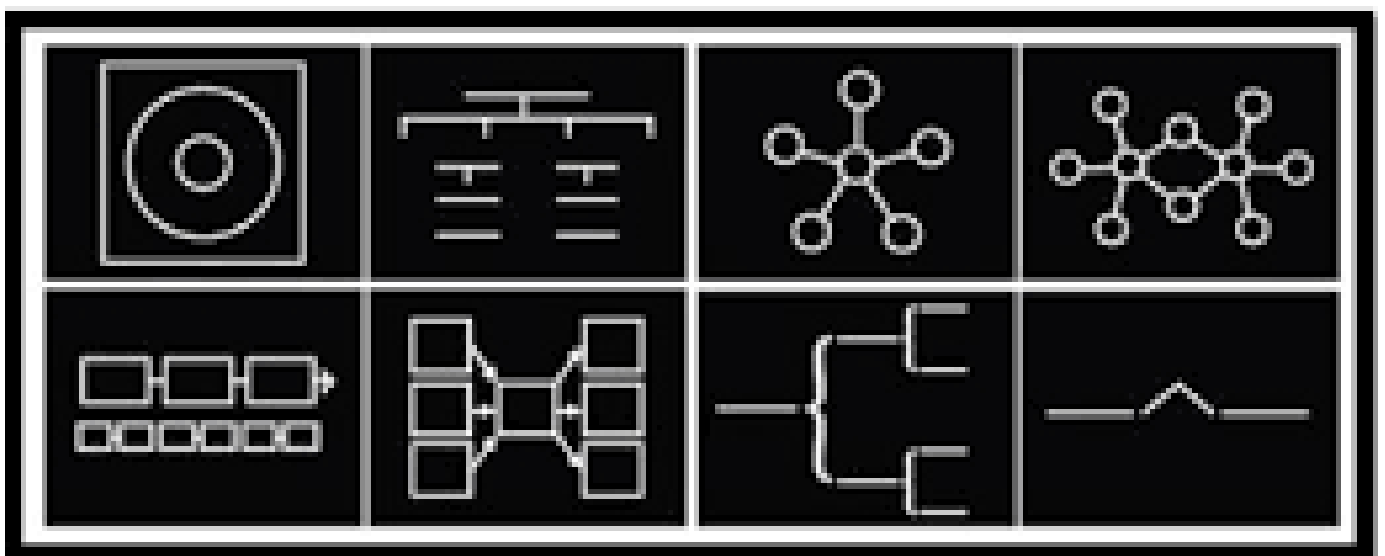
07 Tree Map

08 Brace Map

09 Flow Map


10 Multi-Flow Map

11 Bridge Map



Week 1: July 22-26

The Circle Map



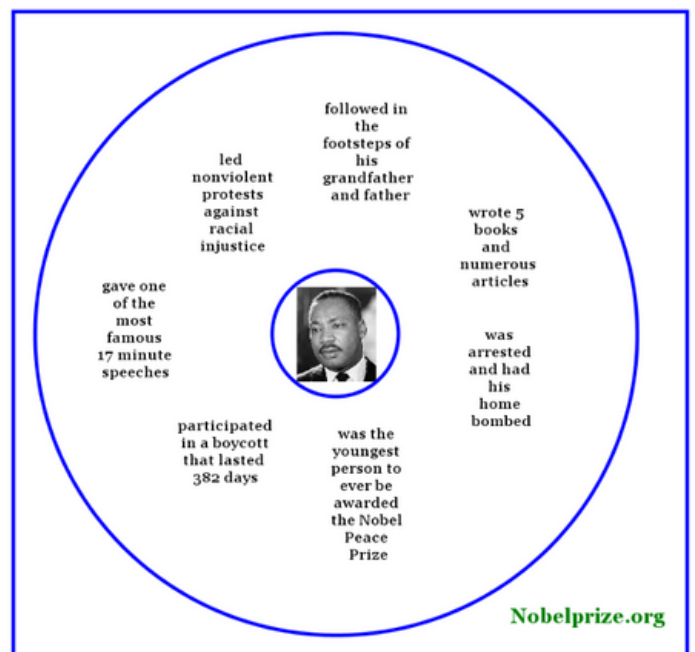
21st Century Learners use the Circle Map to:

- Define
- Brainstorm
- List
- Identify
- Tell everything they know

What does _____ mean?
Can you define _____?

The Circle Map is used to brainstorm ideas and show what you already know about a topic by using context information. This can be words, numbers, pictures, symbols, etc. to represent the object, person, or ideas you are trying to understand or define.

Defining in Context



Week 2: July 29 - August 2

The Bubble Map



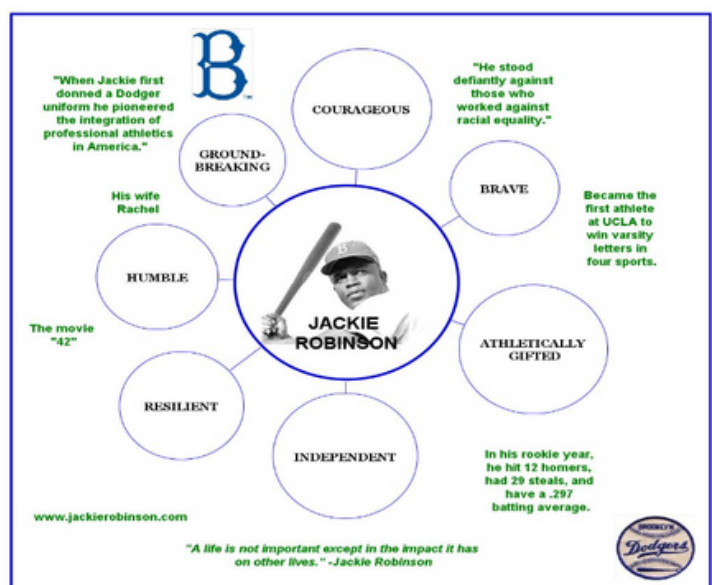
21st Century Learners use the Bubble Map to:

- Describe using adjectives
- Identify characteristics
- Identify properties
- Identify qualities

'How would you describe _____?'

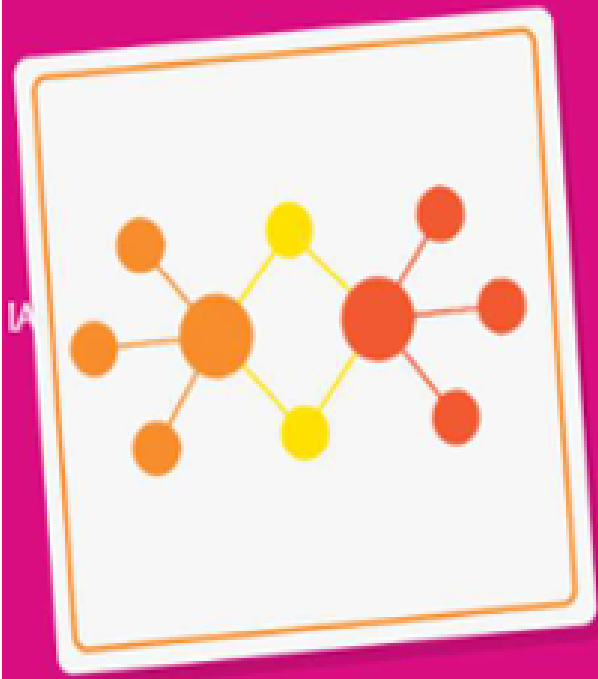
A bubble map is a visual tool designed to help you to develop your thoughts, expand your creativity, improve your writing skills, visualize existing ideas, and brainstorm new ideas without worrying about format or structure.

Describing Qualities



Week 3: August 5-9

The Double Bubble Map



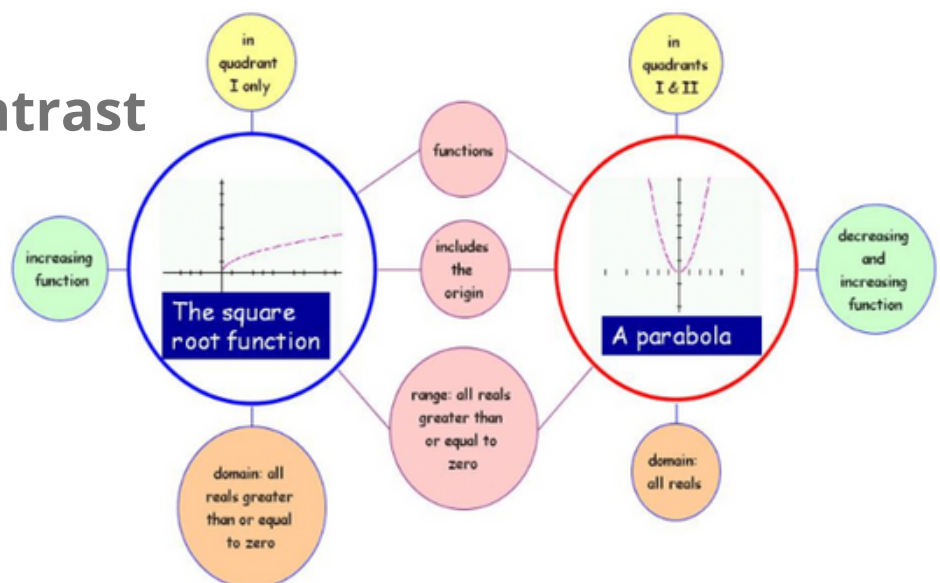
21st Century Learners use the Double Bubble Map to:

- Identify similarities and differences
- Differentiate between characters or objects
- Analyze comparisons and contrasts

'How are ___ and ___ alike/different?'

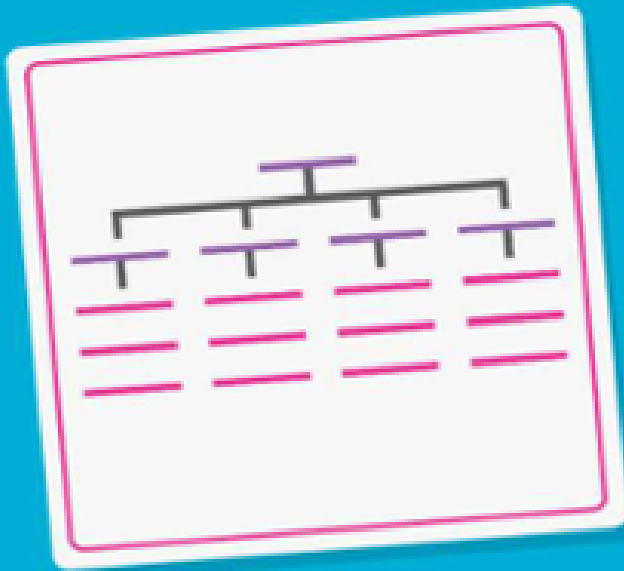
Double Bubble Maps are used to identify points of similarity and difference. The two ideas, items or events being compared are written in the two larger center circles. Outside bubbles contain things that are only possessed by/relevant to one of the two ideas, items or events.

Compare and contrast



Week 4: August 12-16

The Tree Map



21st Century Learners use the Tree Map:

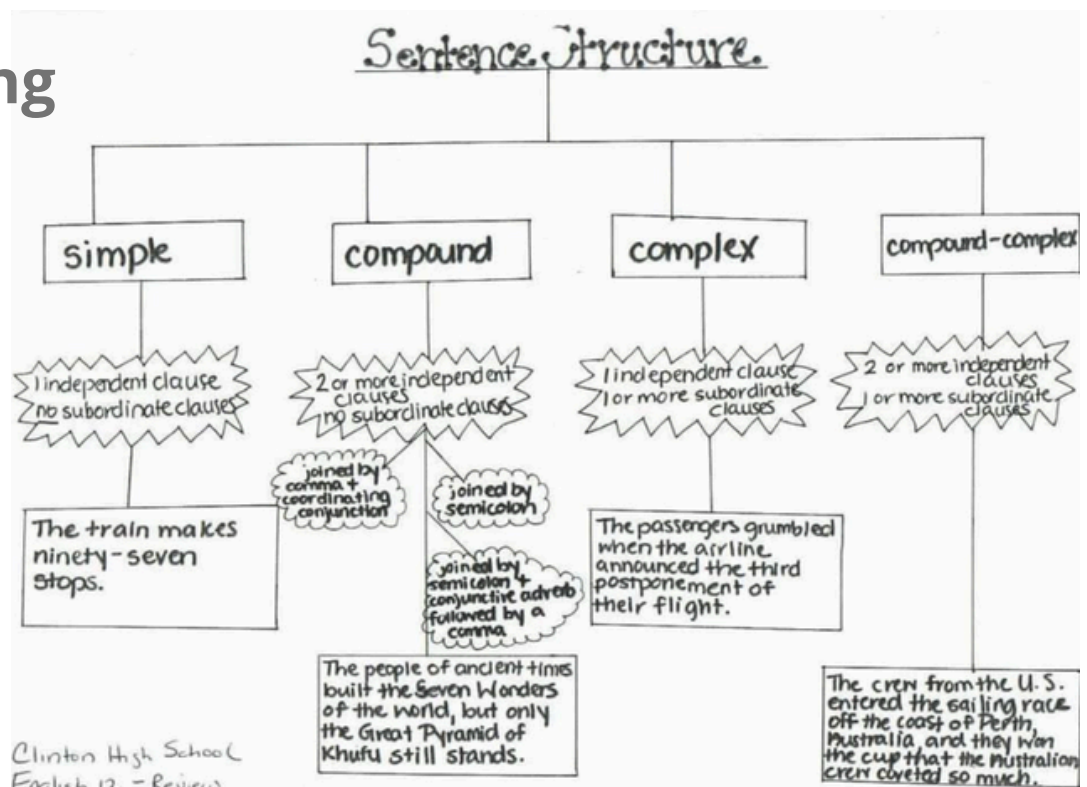
- to classify
- to categorize
- to sort or group
- to give sufficient and related details
- for convergent and divergent thinking

'What is the main idea of ____?'

'What are the supporting details?'

A tree map is used to show the composition of a whole when there are many components.

Classifying



Week 5: August 19-23

The Brace Map



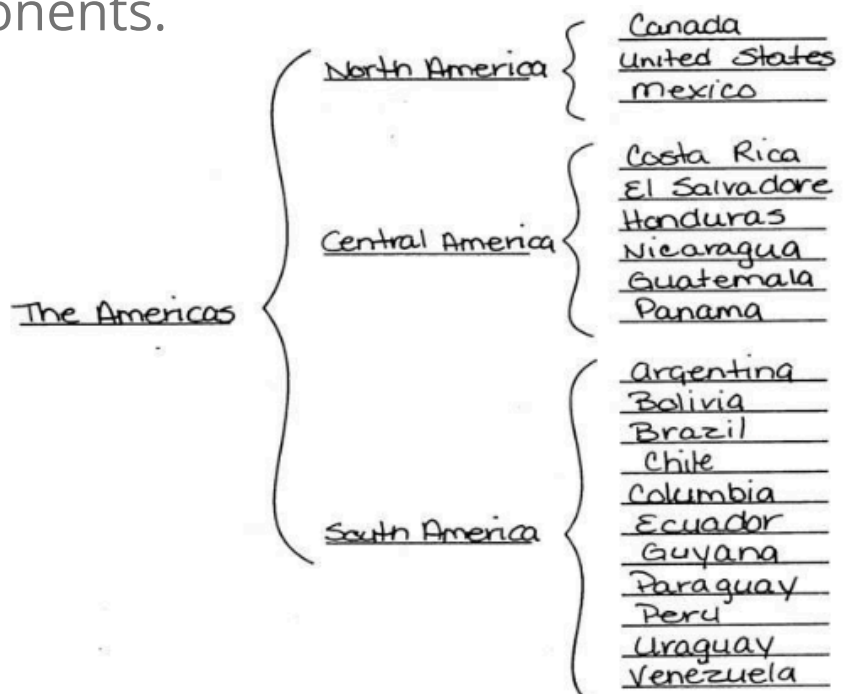
21st Century Learners use the Brace Map to:

- Identify the parts of a whole
- Deconstruct problems
- Show physical components

'Analyze the structural parts of _____ to suggest improvements.'

Brace Maps identify part-to-whole relationships of concrete objects. Students use these maps to identify the parts of a physical object. The name of the whole object is written to the left of the brace and followed by one or more sets of braces that break the major part(s) into components.

Part-Whole



Week 6: August 26-29

The Flow Map



21st Century Learners use the Flow Map to:

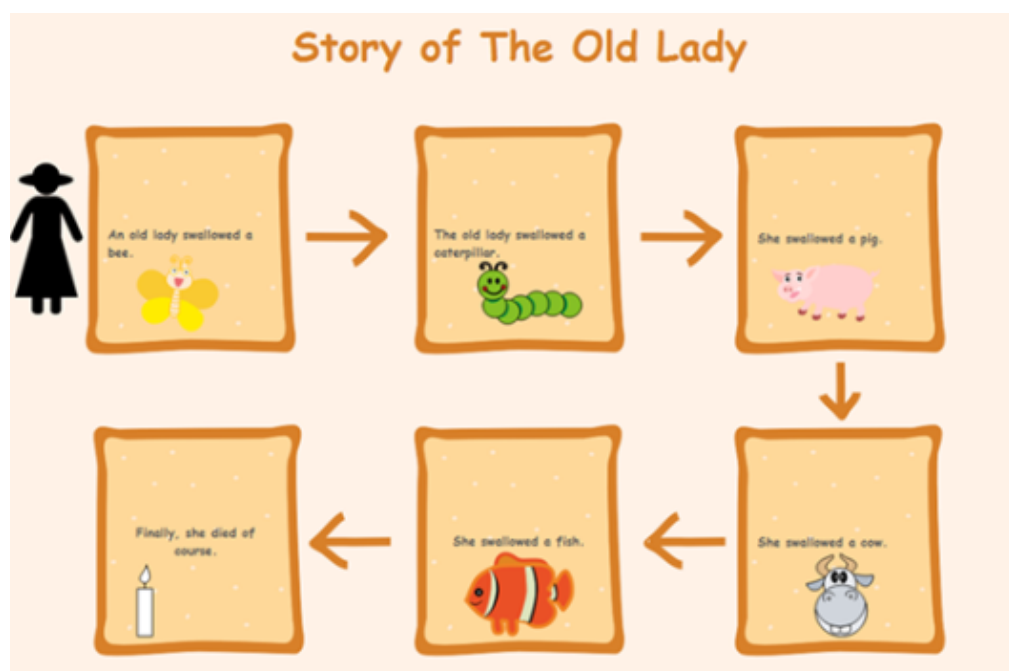
- Sequence steps, stages or events
- Order information
- Analyze patterns

'What is the sequence in which these events took place?'

'How would you demonstrate the steps for solving ____?'

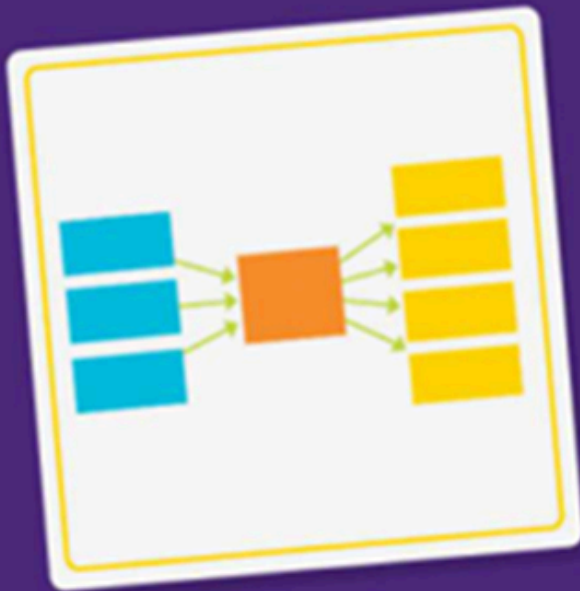
Flow maps are a type of thematic map used in cartography to show the movement of objects between different areas.

Sequencing



Week 7: September 3-6

The Multi-Flow Map



21st Century Learners use the Multi-Flow Map to analyze:

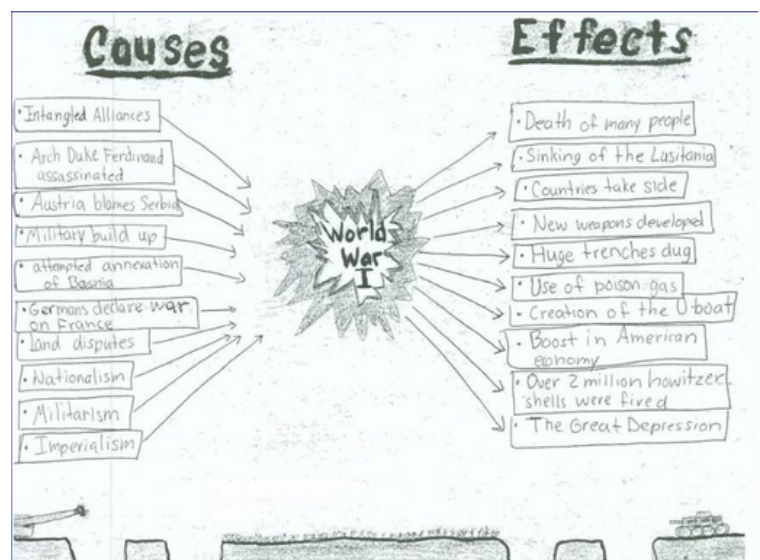
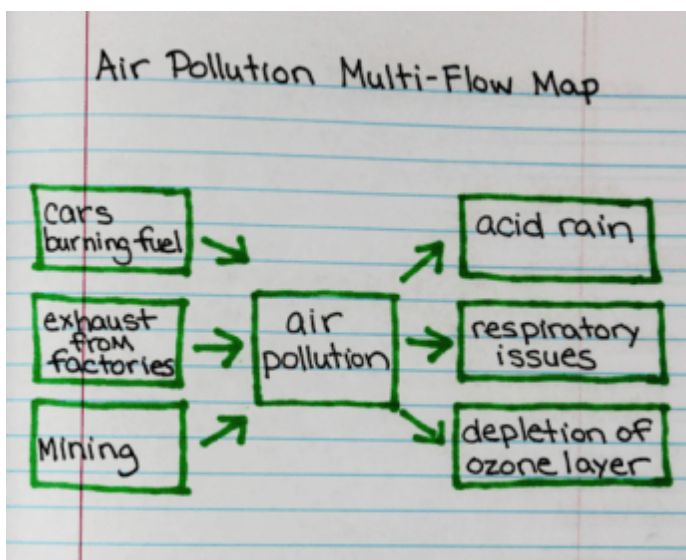
- Causes and effects
- Impacts and/or benefits
- Reasons and/or results
- If...then predictions

'What is the impact of the author's point of view on ____?'

'How would you evaluate the arguments and claims in ____?' 'Why would you choose to do this and what are the short and long-term outcomes?'

A Multi-Flow Map is a visual representation that illustrates how multiple aspects of a given topic are connected.

Cause and effects



Week 8: September 9-13

The Bridge Map



21st Century Learners use the Bridge Map to:

- Connect related ideas and relationships
- Understand analogies and metaphors

'What is the relationship between ___ and ___?'

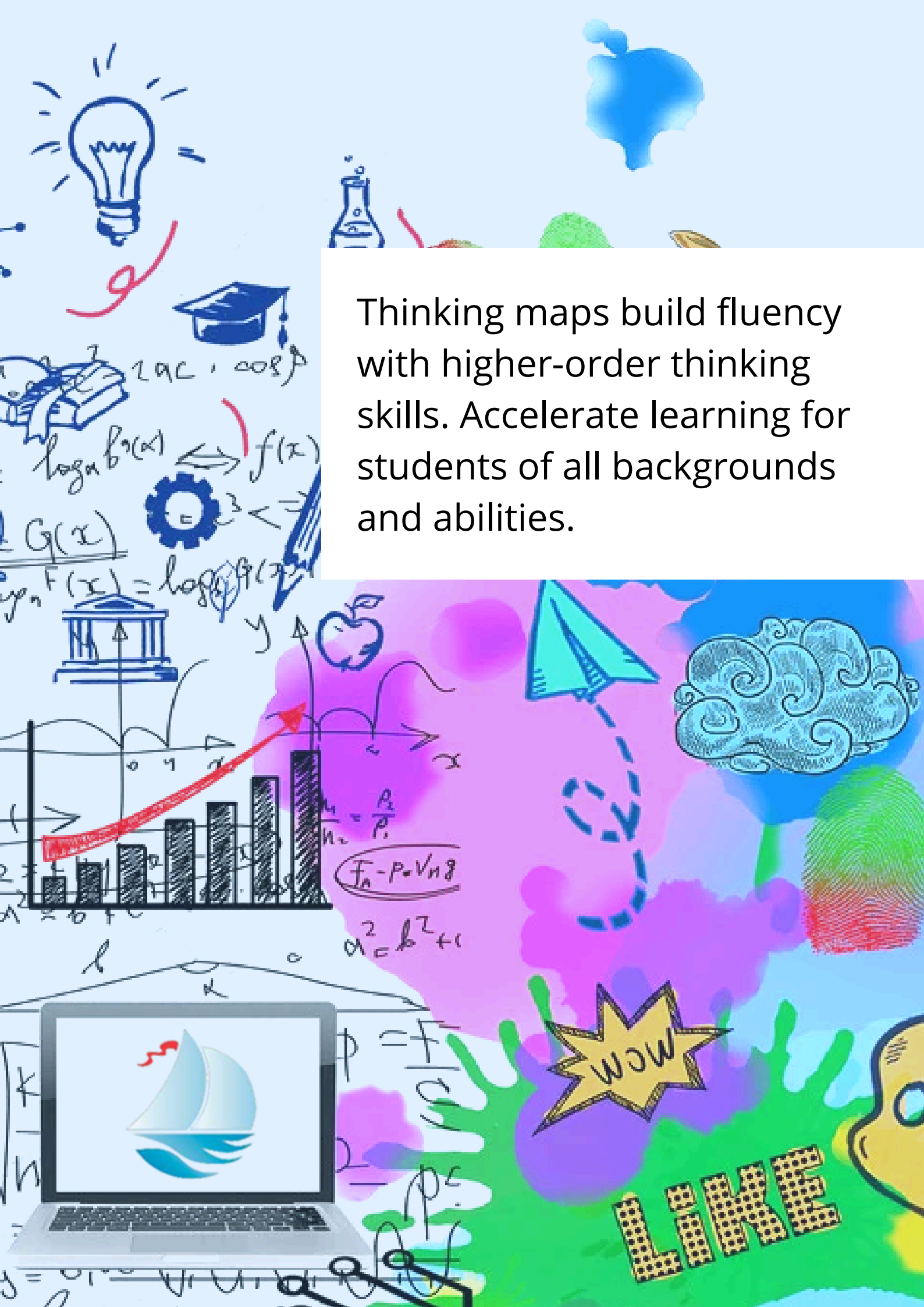
'How would you analyze the relationship in analogous form within ___?'

Bridge Maps help students understand and explain the relationship between two different concepts, ideas or things. Bridge Maps may be used to connect related ideas and relationships and understand analogies and metaphors.

Seeing analogies

The Impact of Inventions on Society





Thinking maps build fluency with higher-order thinking skills. Accelerate learning for students of all backgrounds and abilities.