

Step 3: Click the “Add Student” button. Please note: You **WILL** be able to add multiple students to your app if you have children riding different buses.



» You are signing up for the **Cape Henlopen School District (DE)**.
» If this is not correct, please click [here](#) and reselect your school district .
» If this is correct, please enter at least one student to proceed.

Student Info

Please click below button to add the student.

Add Student

Trouble Signing Up? Many schools don't update students' info - grade, school, transportation - until just prior to the start of school. Please check back 1 week prior to the first day of school.

Still having trouble? [Email Support](#)

Step 4: Enter your child’s Birthdate and Student ID number and click “Save”.

Add student

Birth Date (mm/dd/yyyy)

Student ID

Please Enter Student ID

Save Cancel

Step 5: Confirm that the student information displayed is accurate. You will see your child’s name, school, AM/PM bus numbers and pick-up/drop-off times populated in the boxes. Follow the on-screen instructions if it’s not, and click “Continue” if it is.


If you would like to add a student to your account, click the “Add Student” button to add their information to your account.

» You are signing up for the **Cape Henlopen School District (DE)**.

» If this is not correct, please click [here](#) and reselect your school district .

» If this is correct, please enter at least one student to proceed.

Student Info

Student's Name	School: Rehoboth Elementary School	 (delete student)
AM Bus: <input type="text"/>	Pickup Time: <input type="text"/> AM	
PM Bus: <input type="text"/>	Drop-off Time: <input type="text"/> PM	
<input type="button" value="Add Student"/>		

Trouble Signing Up? Many schools don't update students' info - grade, school, transportation - until just prior to the start of school. Please check back 1 week prior to the first day of school.

Still having trouble? [Email Support](#)

Step 6: Enter your information and click “Sign-Up”.

Welcome to WheresTheBus! Thanks for signing up. Please email us with any questions.

» If you want to edit the Student info, please click [here](#) and re-enter the student info .

User Info:

First Name *

Last Name *

Email *

Confirm Email *

Password *

Confirm Password *

* By checking this box I agree to the [Terms of Use](#)

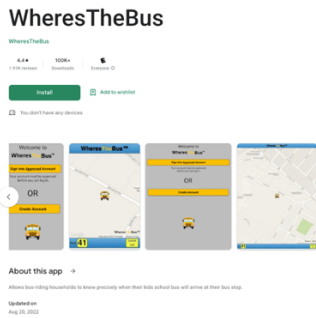
Trouble Signing Up? Many schools don't update students' info - grade, school, transportation - until just prior to the start of school. Please check back 1 week prior to the first day of school.

Still having trouble? [Email Support](#)

Step 7: Congratulations! Your Account is now created.

Step 8: Download the App: To download the App to your Mobile Device, go to your Google Play (android devices) or App Store (iPhone)

Android Google Play:

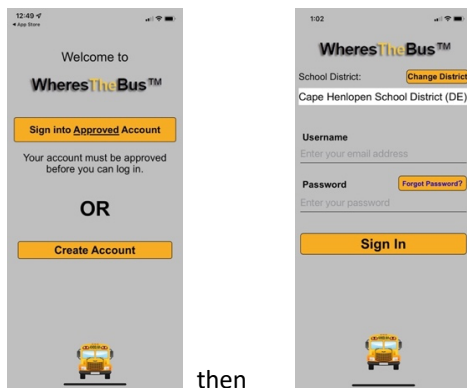


iPhone App Store:



Step 9 and 10: Open the app and either login with the credentials you created online, OR create your account if you haven't done so already. Follow Steps 2-6 above to create your account. **The following screenshots are taken from the iPhone app. Please note that the android appearance may be slightly different.*

If signing into the account, click "Sign into Approved Account" and select Cape Henlopen School District.



then

Once you sign-in, the screen will open the map to show you your child's bus and its estimated time of arrival. If you have multiple children with different busses that you registered your account with, you will be able to swipe between screens to see their individual bus routes.

