

VISION STATEMENT

KalisPELL Public Schools is a great place to learn, work and grow.

MISSION STATEMENT

KalisPELL Public Schools engages students in personalized and diverse opportunities that empower individuals to become lifelong learners and responsible citizens.

GOAL 1: SAFE ENVIRONMENT

Within each school building, KalisPELL Public Schools will create a climate and culture that makes each student feel valued, supported, and respected.

- All schools will provide strategies that are foundational to students' academic success to include: self-management skills, relationship skills, and responsible decision-making skills.
- All schools will implement a consistent set of best practices to include: student expectations and consequences, restorative practices, suicide prevention, crisis prevention, and response.
- All schools will provide opportunities for cross-grade level interactions and/or mentor programs.



GOAL 2: SYSTEMS OF SUPPORT

Within each school building, KalisPELL Public Schools will maintain a tiered system of supports (SOS) that address the academic and behavioral needs of our students, recognizing that cognitive and social-emotional skills must be taught to educate the whole child.

- All schools will provide evidence-based academic, behavioral, intervention, enrichment, and whole-child instruction. All schools will engage in a process to analyze and progress-monitor student assessment data (e.g., academic, behavioral, climate, graduation, attendance). All schools will collaboratively analyze data and problem-solve students' strengths and needs (e.g., departments, learning communities, SOS teams).



GOAL 3: CHALLENGING AND DIVERSE LEARNING ENVIRONMENT

Within each school building, KalisPELL Public Schools will offer rigorous educational programs, activities, and experiences that are designed to support the skills, talents, and abilities of all students. All schools will implement goals necessary to create a personalized learning environment for all students.

- All schools will engage in Professional Development (e.g., PLC, teams, departments, grade levels) to define and assess competency in academic areas.
- All schools will expand access for all students to experience enrichment activities outside of the classroom setting.
- All schools will develop a site-specific plan outlining a flexible system of pupil-centered learning to include: personalized learning, competency-based education, experience-based learning, career pathway exploration, and whole-child development.



GOAL 4: FAMILY AND COMMUNITY ENGAGEMENT

Within each school building, KalisPELL Public Schools will form meaningful partnerships with students, families, community, partner districts, and other stakeholders.

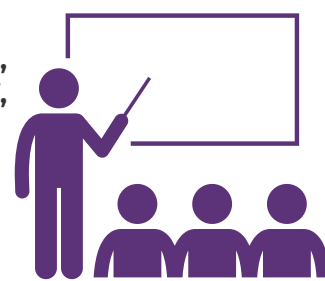
- All schools will develop a plan that supports two-way communication with students, staff, families, and the community.
- All schools will have a process to coordinate and support volunteer opportunities for students, staff, families, and the community.
- The Board and staff will establish an outreach program with partner districts to build relationships for cooperative efforts.



GOAL 5: HIGHLY EFFECTIVE AND WELL TRAINED STAFF

Within each school building, KalisPELL Public Schools will recruit, train, and support the intellectual growth and well-being of our staff, retaining high quality and effective personnel.

- The District will engage in a variety of efforts (e.g., job fairs, partnerships with local universities, social media) to recruit highly qualified staff.
- All schools will participate in the K.E.E.P. induction/mentoring program to support and retain newly hired certified staff.
- All schools will implement a professional development plan that provides diverse offerings and encourages teacher leaders/staff trainers (e.g., areas of the teacher evaluation tool, transformational learning, System of Supports).
- The District will develop a wellness/mental health program to support the well-being of all staff.



GOAL 6: MANAGEMENT AND PRIORITIZATION OF RESOURCES

KalisPELL Public Schools will implement processes to use resources effectively and efficiently.

- The District will provide opportunities for staff and the community to participate in district-level committees.
- The District and key stakeholders will collaborate to develop a five year revenue stream and align the budget to priorities (e.g., bonds, levies, grants, and other income to support buildings, infrastructure, technology, and curriculum).
- The District and key stakeholders will complete a long range facilities plan
- The District will annually review the capacity of special programs and update out-of-district enrollment procedures to ensure they meet the needs of our in-district students.



KPS BELIEVES...

A safe, nurturing, supportive and engaging learning environment is foundational.
 The best decisions put students first.
 Every student will learn and succeed.
 High expectations produce high achievement.
 Our students and staff are our most valuable asset.
 Our staff deserves our support and the best resources we can provide to meet the diverse needs of our students.
 Excellent schools positively impact our communities.
 We are stewards of the public trust.