

2022-2023 Academic Performance





BUSD Utilizes a 4Rs Data Analysis Protocol

1. Research

(Student Performance)

Multiple Measures

(Local & State Assessments)

Disaggregated Data

4. Respond

(Optimizing Results)

Prioritize Equity

Actionable Items

Systemic Investments of
time, effort, resources



2. Recall

(Learning Conditions)

Teaching Practices

Programs

Initiatives

3. Reflect

(Possible reasons for outcomes)

Instructional Systems

Additional Data Connections

Organizational Beliefs/Values



Data Analysis Protocol Dashboards

2023 SBAC/iReady Dashboard

School name

Bret Harle...	Burbank High School
Burbank USD...	Disney Elementary...
Dolores Huerta...	Edison Elementary...
Emerson...	Independent...
Jefferson...	John Burroughs...
John Muir Middle...	Luther Burbank...
Magnolia Park High...	Mc Kinley...
Miller Elementary	Monterey High School
Providencia...	Roosevelt Elementary
Stevenson...	Washington...

Grade

1
2
3
4
5
6
7
8

SED

F
Not a High School...

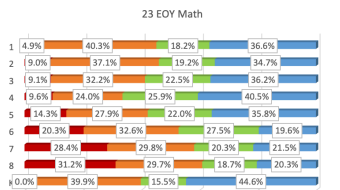
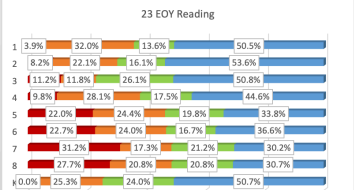
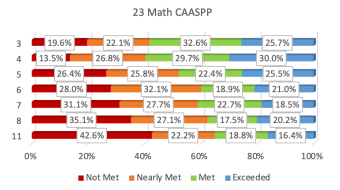
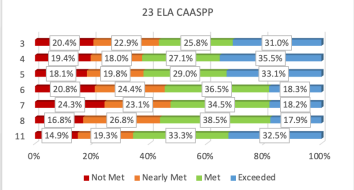
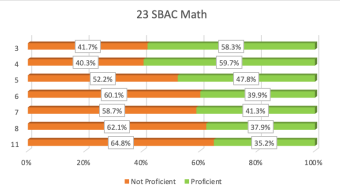
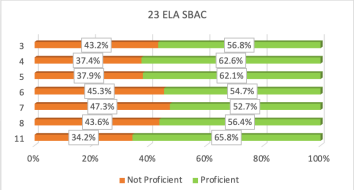
R
#N/A

ELL

English Learner...
ENGLISH ONLY
Initially Fluent...
Reclassified...

GATE

Did not qualify
GATE
NOT in Gate (Zero)
Space Available
Testing in Progress
(blank)



SWD

504 Plan	Active SST
DHH	DHH - RSP
DHH - SDC	DIS Services
Exited RSP or SDC	No Special Education...
RSP	SDC - Not Severely...
SDC - Severely Handicapped	Speech
(blank)	

2023 ELA CAASPP

0
Exceeded
Met
Nearly Met
Not Met

2023 Math CAASPP

0
Exceeded
Met
Nearly Met
Not Met

Race

American Indian or Alaskan...	Asian Indian
Black or African American	Cambodian
Chinese	Declined to State/Unknown
Filipino	Guamanian
Hawaiian	Hmong
Japanese	Korean
Laotian	Other Asian
Other Pacific Islander	Samoan
Tahitian	Vietnamese
White	

ELA Grade

0
1
1.2
1.25
1.3333333333333333
1.4
1.5
1.6

Math Grade

0
1
2
3
4
A
A-
A+

District Data

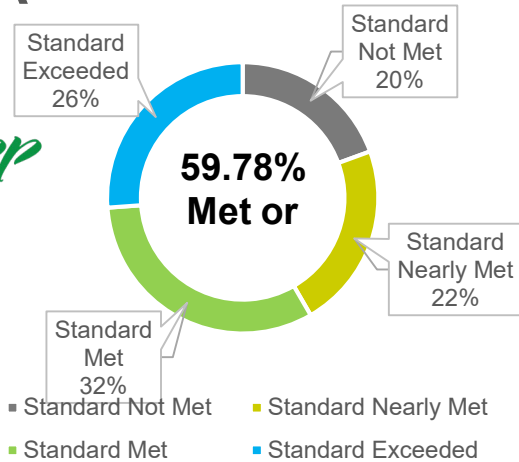
End-of-Year (EOY)



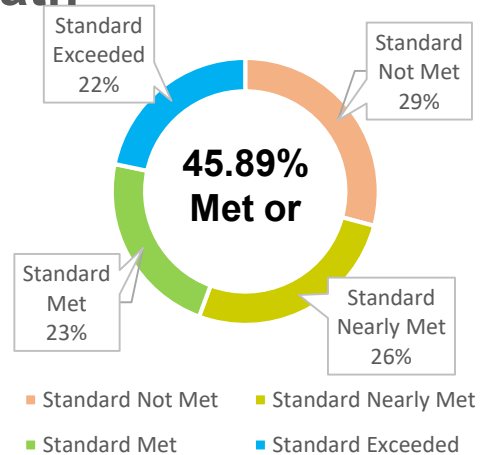


2022-2023 Initial CAASPP Results (Districtwide)

ELA



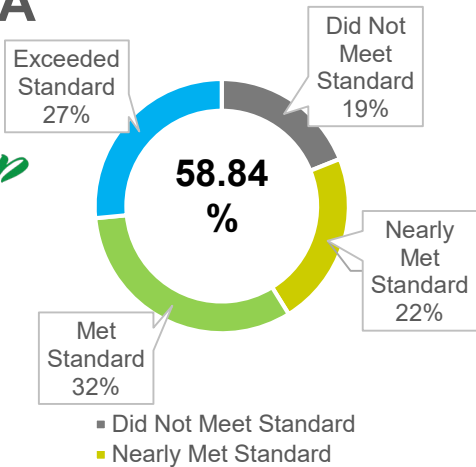
Math



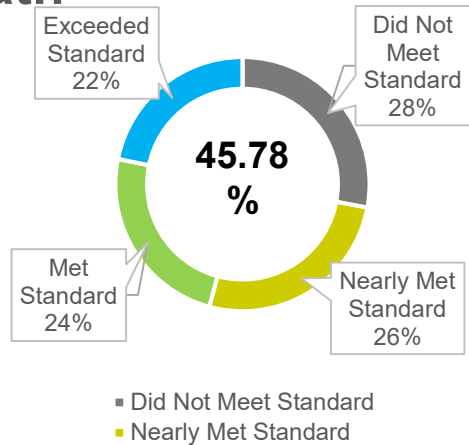


2021-2022 Initial CAASPP Results (Districtwide)

ELA



Math



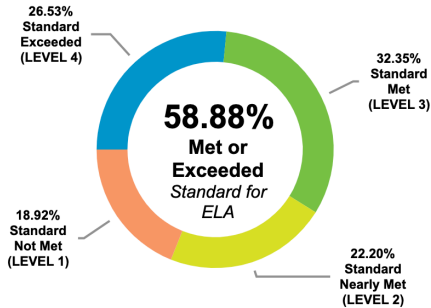


2021-2022 CAASPP Results (Districtwide)



ELA

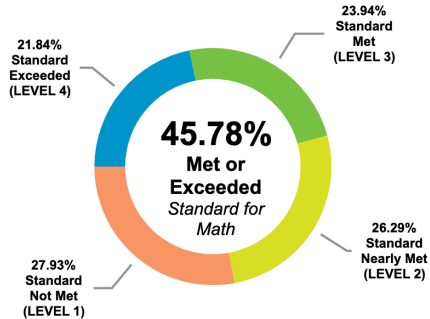
Percent of students within each achievement level



[VIEW ELA DETAILED TEST RESULTS](#)

Mathematics

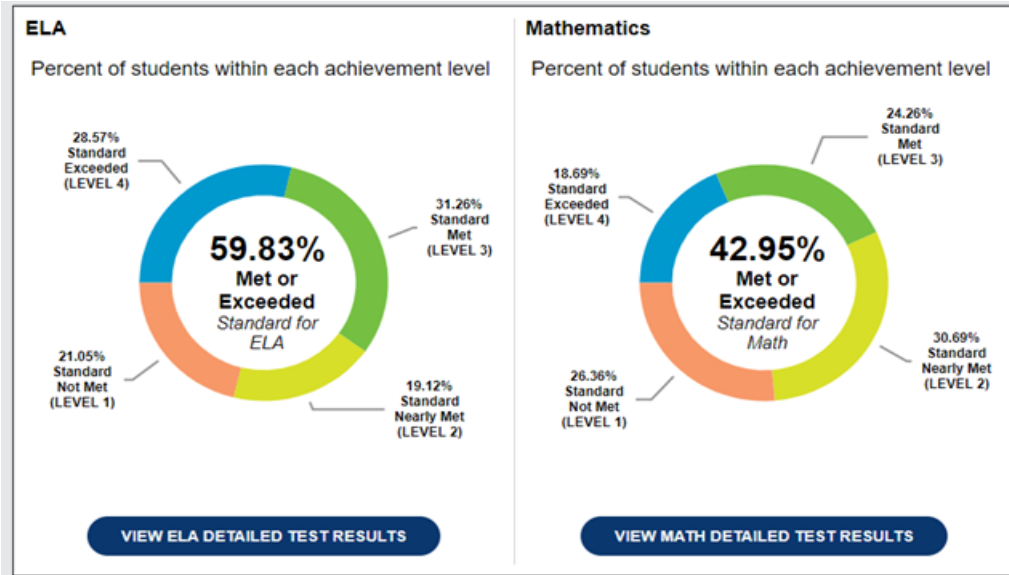
Percent of students within each achievement level



[VIEW MATH DETAILED TEST RESULTS](#)



2018-2019 CAASPP Results (Districtwide)

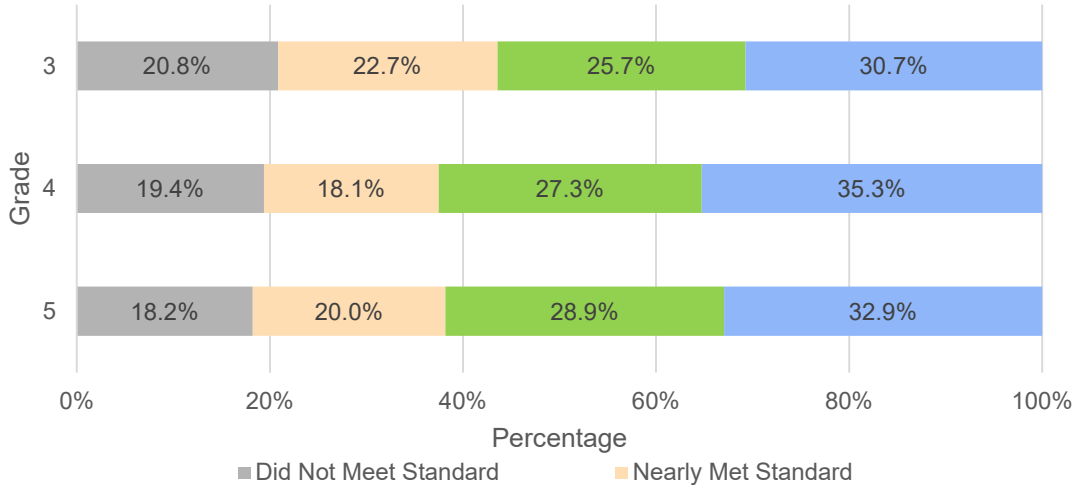


Elementary Data

End-of-Year (EOY)



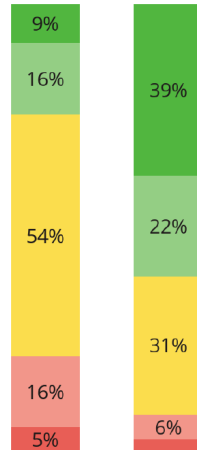
District Math Data for Elementary 2022-2023 State Assessments





How Have Relative Math Placements Changed from Fall to Spring? District Assessments

Placement Distribution, Fall 22-23 to Spring 22-23



- Mid or Above Grade Level
- Early On Grade Level
- 1 Grade Level Below
- 2 Grade Levels Below
- 3+ Grade Levels Below

i-Ready's placements are an indication of what students are expected to know at each grade level. The mid or above grade level placement refers to students who may be considered proficient for their grade.

This is a longitudinal analysis

Students Assessed

Fall	Spring
4,329	

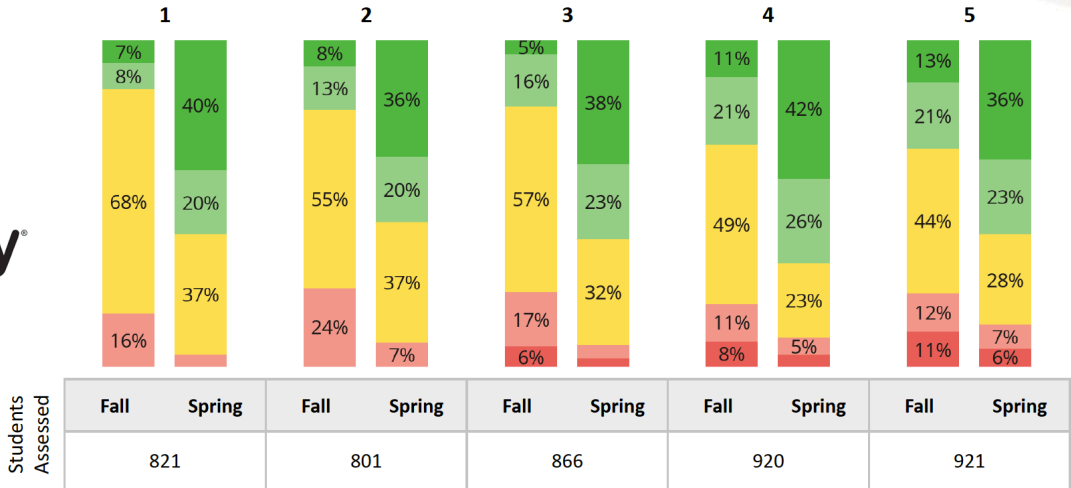
4,329





How Have Relative Math Placements Changed From Fall to Spring?

Placement Distribution, Fall 22-23 to Spring 22-23



- Mid or Above Grade Level
- Early On Grade Level
- 1 Grade Level Below
- 2 Grade Levels Below
- 3+ Grade Levels Below

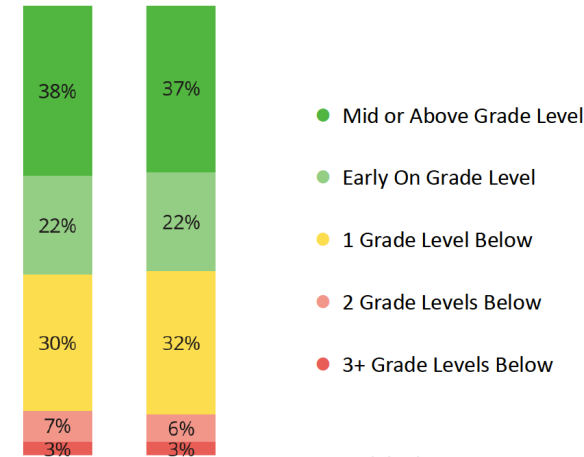
i-Ready's placements are an indication of what students are expected to know at each grade level. The mid or above grade level placement refers to students who may be considered proficient for their grade.





Historical Math Placements Changed from Spring 22 to Spring 23? District Assessments

Placement Distribution, Spring 21-22 to Spring 22-23



- Mid or Above Grade Level
- Early On Grade Level
- 1 Grade Level Below
- 2 Grade Levels Below
- 3+ Grade Levels Below

i-Ready's placements are an indication of what students are expected to know at each grade level. The mid or above grade level placement refers to students who may be considered proficient for their grade.

This is a cross-sectional analysis.

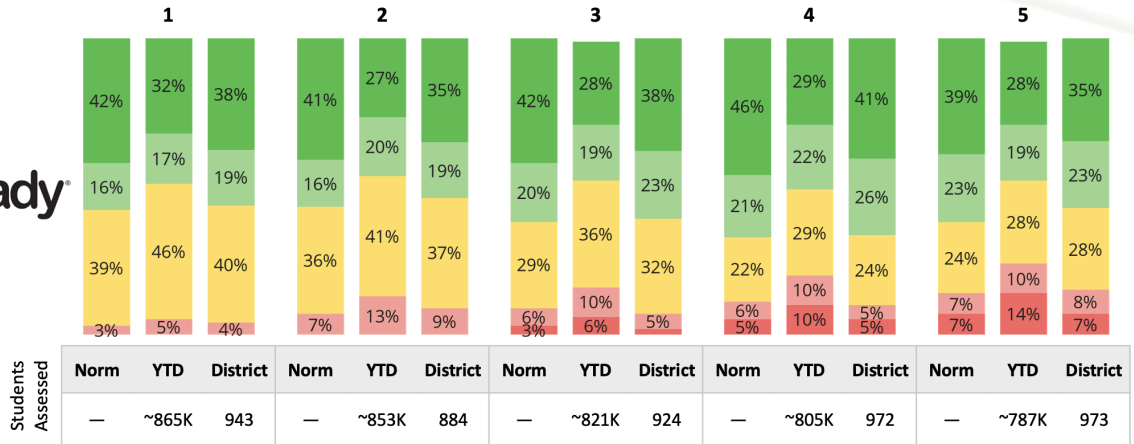


Students Assessed	21-22	22-23
	4,716	4,696



How Do the District's Math Placements Compare Nationally?

Spring Placement Distribution for District and Benchmarks

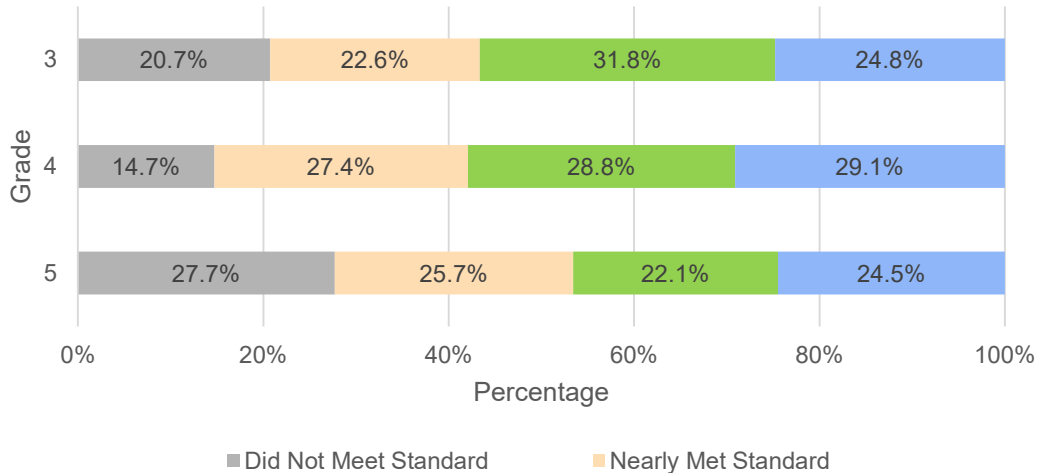


- Mid or Above Grade Level
- Early On Grade Level
- 1 Grade Level Below
- 2 Grade Levels Below
- 3+ Grade Levels Below

Norm: i-Ready Spring 18-19 National Norms

YTD: National Spring 22-23 population year-to-date

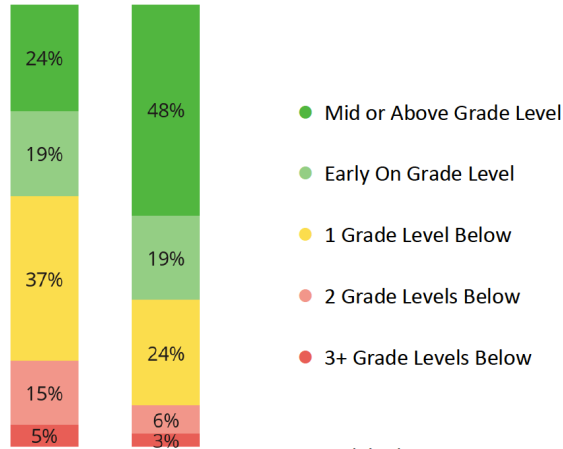
District ELA Data for Elementary 2022-2023 State Assessments





How Have Relative Reading Placements Changed from Fall to Spring?

Placement Distribution, Fall 22-23 to Spring 22-23



- Mid or Above Grade Level
- Early On Grade Level
- 1 Grade Level Below
- 2 Grade Levels Below
- 3+ Grade Levels Below

i-Ready's placements are an indication of what students are expected to know at each grade level. The mid or above grade level placement refers to students who may be considered proficient for their grade.

This is a longitudinal analysis

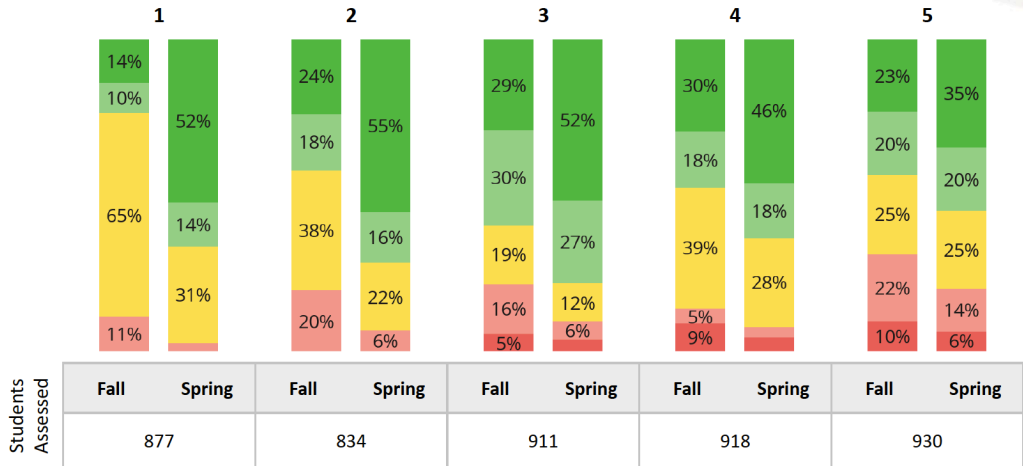
	Fall	Spring
Students Assessed	4,470	





How Have Relative Reading Placements Changed From Fall to Spring?

Placement Distribution, Fall 22-23 to Spring 22-23



- Mid or Above Grade Level
- Early On Grade Level
- 1 Grade Level Below
- 2 Grade Levels Below
- 3+ Grade Levels Below

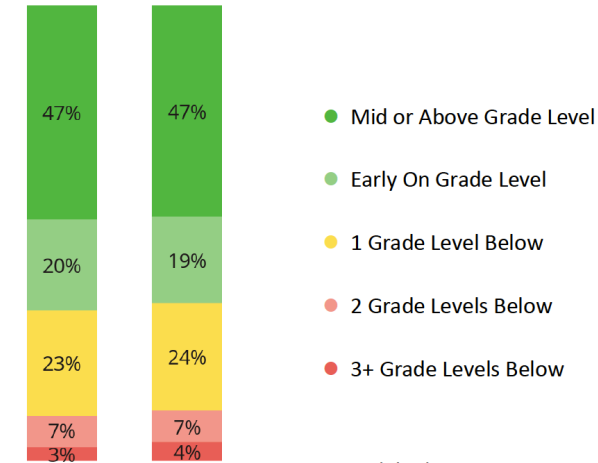
i-Ready's placements are an indication of what students are expected to know at each grade level. The mid or above grade level placement refers to students who may be considered proficient for their grade.





Historical Reading Placements Changes from Spring 22 to Spring 23 District Assessments

Placement Distribution, Spring 21-22 to Spring 22-23



- Mid or Above Grade Level
- Early On Grade Level
- 1 Grade Level Below
- 2 Grade Levels Below
- 3+ Grade Levels Below

	21-22	22-23
Students Assessed	4,685	4,747

i-Ready's placements are an indication of what students are expected to know at each grade level. The mid or above grade level placement refers to students who may be considered proficient for their grade.

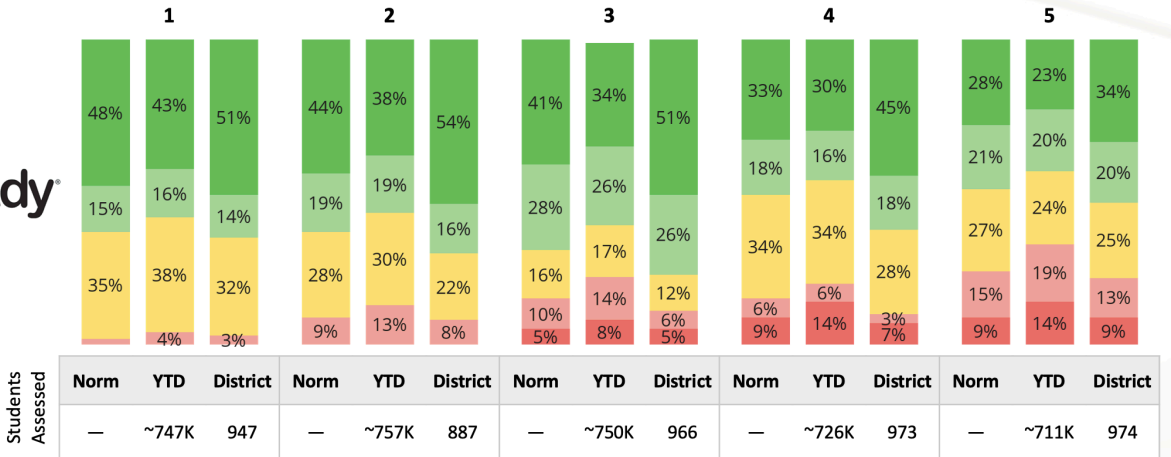
This is a cross-sectional analysis.





How Do the District's Reading Placements Compare Nationally?

Spring Placement Distribution for District and Benchmarks



- Mid or Above Grade Level
- Early On Grade Level
- 1 Grade Level Below
- 2 Grade Levels Below
- 3+ Grade Levels Below

Norm: i-Ready Spring 18-19 National Norms

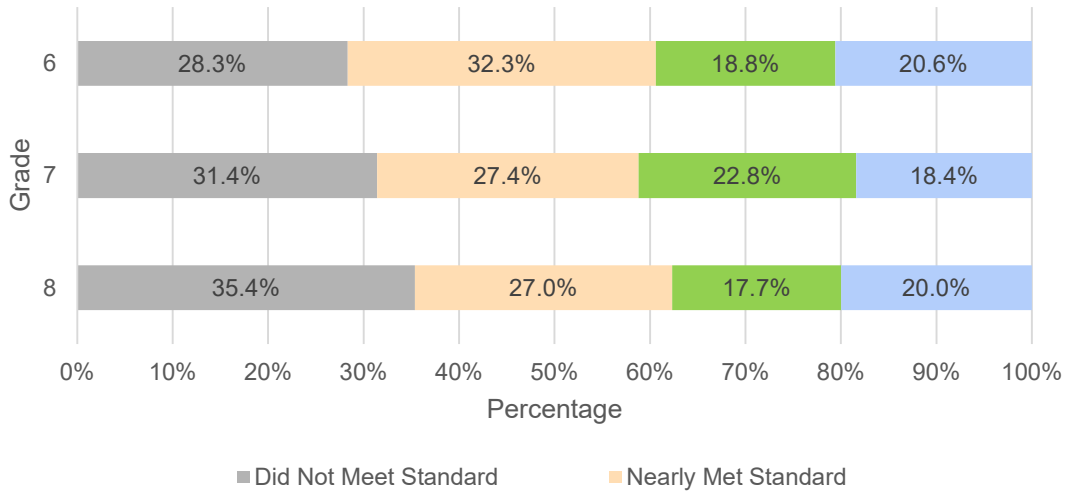
YTD: National Spring 22-23 population year-to-date

Middle School Data

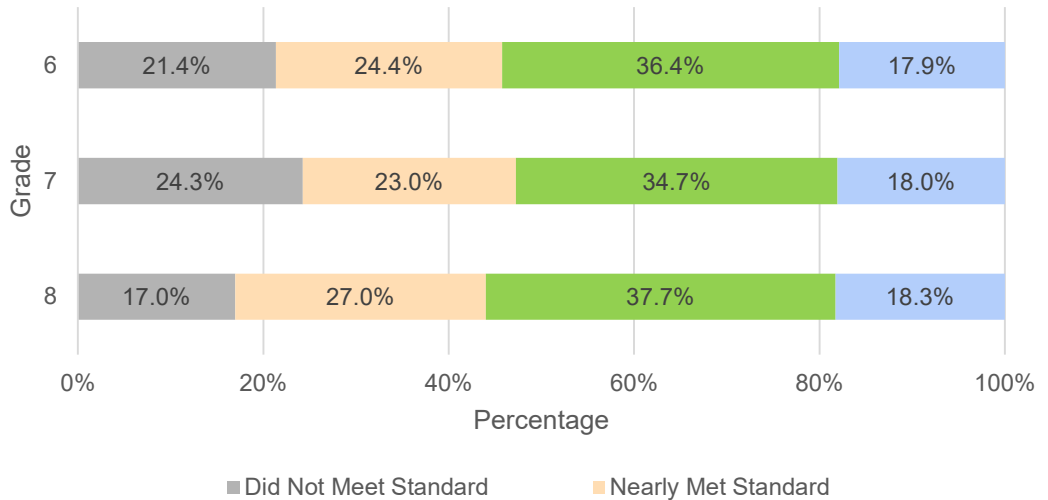
End-of-Year (EOY)



District Math Data for M.S. 2022-2023 State Assessments



District ELA Data for M.S. 2022-23 State Assessments



Secondary Grade Data

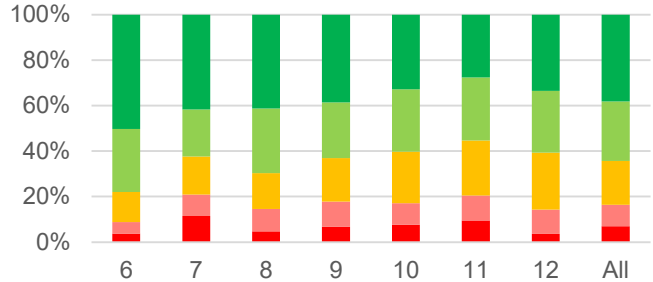
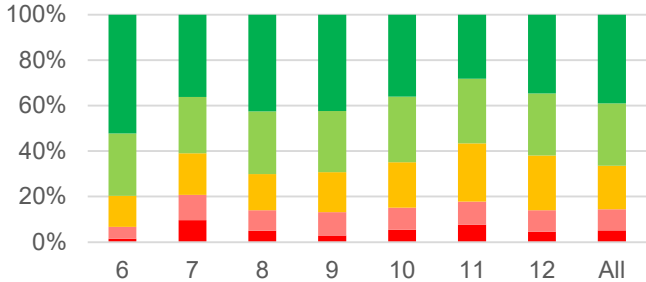
2022-2023





22-23 Grades Analysis Data - Semester 1 & 2 Math

■ A ■ B ■ C ■ D ■ F



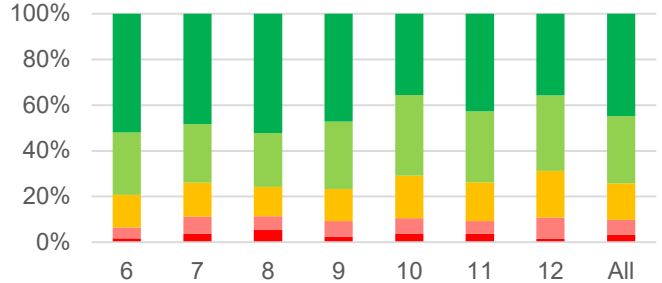
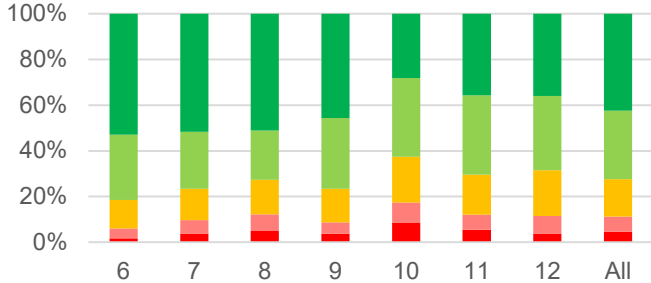
Semester 1 Math	A	B	C	D	F
6th Grade	52.3%	27.4%	13.7%	5.2%	1.5%
7th Grade	36.2%	24.7%	18.4%	11.1%	9.6%
8th Grade	42.5%	27.6%	15.9%	9.0%	5.0%
9th Grade	42.4%	26.8%	17.7%	10.2%	3.0%
10th Grade	36.0%	28.8%	20.0%	9.8%	5.4%
11th Grade	28.1%	28.4%	25.6%	10.1%	7.7%
12th Grade	34.7%	27.3%	24.1%	9.5%	4.5%
TOTAL	39.0%	27.3%	19.2%	9.3%	5.2%

Semester2 Math	A	B	C	D	F
6th Grade	50.3%	27.7%	13.2%	5.1%	3.7%
7th Grade	41.6%	20.7%	16.8%	9.4%	11.4%
8th Grade	41.3%	28.5%	15.7%	9.9%	4.7%
9th Grade	38.3%	24.6%	19.2%	11.1%	6.8%
10th Grade	32.7%	27.3%	22.7%	9.5%	7.7%
11th Grade	27.6%	27.7%	24.3%	11.0%	9.5%
12th Grade	33.6%	27.2%	25.0%	10.7%	3.6%
TOTAL	38.1%	26.2%	19.2%	9.5%	6.9%



22-23 Grade Analysis Data - Semester 1 & 2 ELA

Legend: A (Dark Green), B (Light Green), C (Yellow), D (Light Red), F (Dark Red)



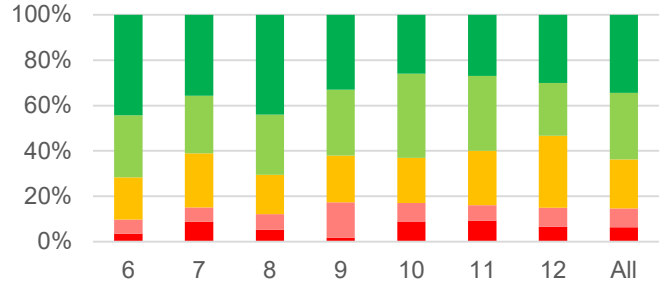
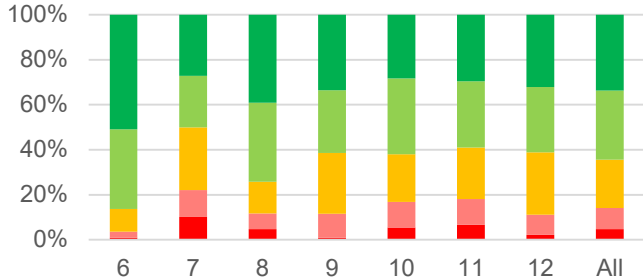
Semester 1 English	A	B	C	D	F
6th Grade	53.0%	28.5%	12.5%	4.4%	1.7%
7th Grade	51.7%	24.9%	13.8%	5.9%	3.8%
8th Grade	51.1%	21.6%	15.1%	7.3%	4.9%
9th Grade	45.6%	30.9%	14.7%	5.1%	3.6%
10th Grade	28.1%	34.5%	20.0%	8.9%	8.5%
11th Grade	35.7%	34.8%	17.4%	6.5%	5.5%
12th Grade	36.0%	32.5%	20.0%	7.6%	3.8%
TOTAL	42.5%	30.0%	16.4%	6.6%	4.6%

Semester 2 English	A	B	C	D	F
6th Grade	51.9%	27.3%	14.2%	4.7%	1.8%
7th Grade	48.3%	25.6%	14.8%	7.6%	3.7%
8th Grade	51.7%	23.8%	13.0%	5.8%	5.7%
9th Grade	47.1%	29.6%	14.1%	6.8%	2.5%
10th Grade	35.1%	35.1%	18.9%	6.8%	4.0%
11th Grade	42.6%	31.1%	16.9%	5.4%	3.9%
12th Grade	35.4%	33.0%	20.4%	9.3%	1.9%
TOTAL	44.6%	29.4%	16.0%	6.6%	3.3%



■ A ■ B ■ C ■ D ■ F

2022-23 SPED Grades Analysis Data - Math



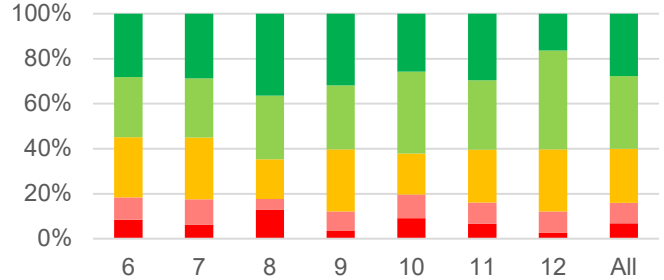
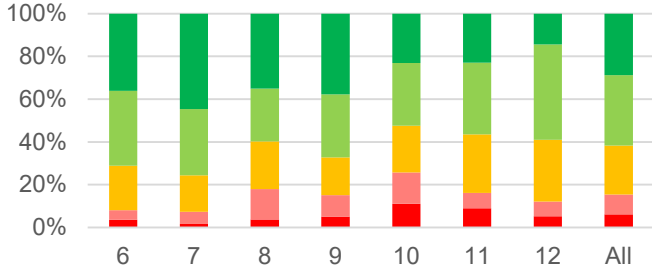
Semester1 Math	A	B	C	D	F
6th Grade	50.9%	35.5%	10.0%	2.7%	0.9%
7th Grade	27.1%	22.9%	28.0%	11.9%	10.2%
8th Grade	39.1%	35.2%	14.1%	7.0%	4.7%
9th Grade	33.6%	27.9%	27.0%	10.7%	0.8%
10th Grade	28.3%	33.7%	21.2%	11.4%	5.4%
11th Grade	29.5%	29.5%	22.8%	11.4%	6.7%
12th Grade	32.2%	28.9%	27.8%	8.9%	2.2%
TOTAL	33.7%	30.7%	21.4%	9.4%	4.7%

Semester2 Math	A	B	C	D	F
6th Grade	44.2%	27.4%	18.6%	6.2%	3.5%
7th Grade	35.7%	25.4%	23.8%	6.3%	8.7%
8th Grade	43.9%	26.5%	17.4%	6.8%	5.3%
9th Grade	33.1%	28.9%	20.7%	15.7%	1.7%
10th Grade	25.9%	37.0%	20.0%	8.1%	8.9%
11th Grade	26.9%	33.1%	23.8%	6.9%	9.2%
12th Grade	30.0%	23.3%	31.7%	8.3%	6.7%
TOTAL	34.4%	29.4%	21.5%	8.3%	6.4%



2022-23 SPED Grades Analysis Data - English

Legend: A (Green), B (Light Green), C (Yellow), D (Pink), F (Red)



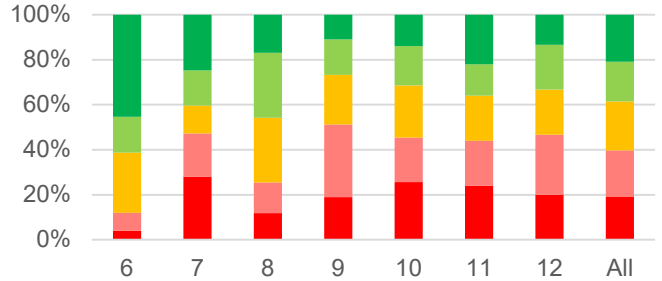
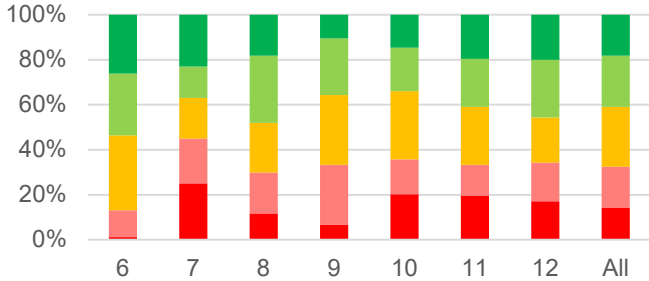
Semester1 ELA	A	B	C	D	F
6th Grade	36.0%	35.1%	20.7%	4.5%	3.6%
7th Grade	44.7%	30.9%	17.1%	5.7%	1.6%
8th Grade	35.1%	24.6%	22.4%	14.2%	3.7%
9th Grade	37.8%	29.4%	17.6%	10.1%	5.0%
10th Grade	23.1%	25.9%	22.4%	14.7%	14.0%
11th Grade	22.8%	33.9%	26.9%	7.6%	8.8%
12th Grade	14.5%	44.2%	29.1%	7.0%	5.2%
TOTAL	29.2%	32.5%	22.9%	9.1%	6.3%

Semester2 ELA	A	B	C	D	F
6th Grade	28.2%	26.8%	26.8%	9.9%	8.5%
7th Grade	28.8%	26.3%	27.5%	11.3%	6.3%
8th Grade	36.5%	28.2%	17.6%	4.7%	12.9%
9th Grade	31.9%	28.4%	27.6%	8.6%	3.4%
10th Grade	25.8%	36.4%	18.2%	10.6%	9.1%
11th Grade	29.5%	30.9%	23.5%	9.4%	6.7%
12th Grade	16.4%	44.0%	27.6%	9.5%	2.6%
TOTAL	27.8%	32.3%	23.9%	9.2%	6.8%



2022-23 English Learner Grades Analysis Data - Math

Legend: A (Green), B (Light Green), C (Yellow), D (Pink), F (Red)



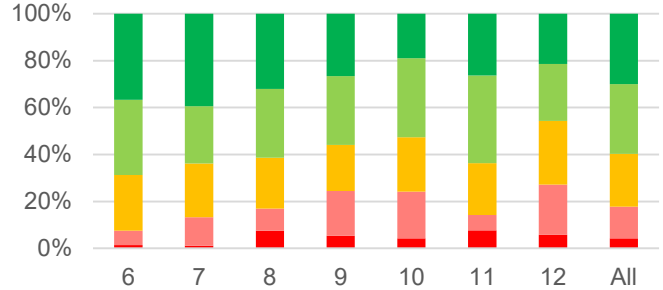
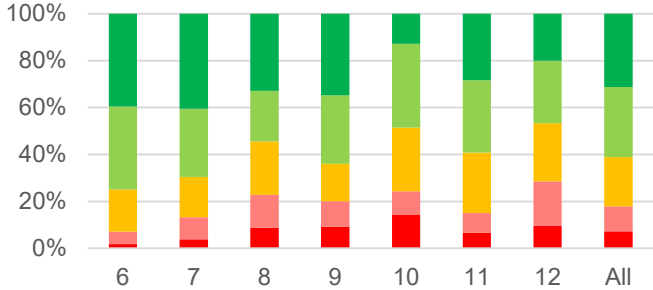
Semester1 Math	A	B	C	D	F
6th Grade	22	23	28	10	1
7th Grade	23	14	18	20	25
8th Grade	14	23	17	14	9
9th Grade	13	31	38	33	8
10th Grade	16	21	33	17	22
11th Grade	13	14	17	9	13
12th Grade	7	9	7	6	6
TOTAL	108	135	158	109	84

Semester2 Math	A	B	C	D	F
6th Grade	34	12	20	6	3
7th Grade	22	14	11	17	25
8th Grade	10	17	17	8	7
9th Grade	14	20	28	41	24
10th Grade	12	15	20	17	22
11th Grade	11	7	10	10	12
12th Grade	2	3	3	4	3
TOTAL	105	88	109	103	96



2022-23 English Learner Grades Analysis Data - English

Legend: A (Dark Green), B (Light Green), C (Yellow), D (Pink), F (Red)



Semester1 ELA	A	B	C	D	F
6th Grade	66	59	30	9	3
7th Grade	85	61	36	20	8
8th Grade	49	32	34	21	13
9th Grade	57	48	26	18	15
10th Grade	18	50	38	14	20
11th Grade	34	37	31	10	8
12th Grade	21	28	26	20	10
TOTAL	330	315	221	112	77

Semester2 ELA	A	B	C	D	F
6th Grade	54	47	35	9	2
7th Grade	71	44	41	22	2
8th Grade	34	31	23	10	8
9th Grade	50	55	37	36	10
10th Grade	22	39	27	23	5
11th Grade	24	34	20	6	7
12th Grade	15	17	19	15	4
TOTAL	270	267	202	121	38

High School Credit & A-G Data

2022-2023





2022 Fall A-G Courses with 10+ Fails

Course	Fails	Course	Fails	Course	Fails
Art Structure 1	83	English 9	32	Mic/Mar Biology	15
English 10	79	Digital Photo	30	Geometry (S)	14
Geometry	74	EarthSpaceSci	28	French 1	13
Biology	69	DigitalMedProd	28	AP Eur Hist	12
Spanish 1	68	Dance 1	27	Economics	12
Wrld Hist	59	Spanish 2	24	English 10 (T)	12
English 11	51	Wrld Hist (S)	21	Culinary Arts	11
US History	50	English 12	20	Comp/Program	11
Biology (S)	49	Wrld Hist (S)	21	Anatomy/Phys	11
Algebra 1	35	English 12	20	Amer Sign 1	10
Algebra 2	35	Wrld Hist (S)	21		



2023 Spring A-G Courses with 10+ Fails

Course	Fails	Course	Fails	Course	Fails
Spanish 1	90	English 10	38	DigitalMedProd	16
Geometry	89	Spanish 2	35	Geometry (S)	15
Algebra 1	71	Wrld Hist	32	Wrld Hist (S)	13
Art Structure 1	58	English 11	28	Mic/Mar Biology	10
Biology	57	EarthSpaceSci	26	Dance 1	10
Biology (S)	53	Digital Photo	25		
Algebra 2	40	Chemistry	24		
Algebra 1 (S)	38	English 9	23		
US History	38	Spanish Spks 1	18		



2022 Fall A-G Courses with 20+ Ds

Course	D/D-/D+	Course	D/D-/D+	Course	D/D-/D+
Algebra 1	132	Chemistry	59	EarthSpaceSci	33
Spanish 1	101	English 11	57	Spanish 3	28
Biology	88	English 12	53	Digital Photo	28
Geometry	87	Algebra 1 (S)	46	Pre-Calculus	26
English 10	86	Wrld Hist	45	Anatomy/Phys	25
US History	79	Economics	41	Mic/Mar Biology	25
Algebra 2	76	English 9	36	AP Eur Hist	23
Spanish 2	65	Spanish Spks 1	35	Dance 1	22
Art Structure 1	60	Biology (S)	33	Sculpture 1	21



2023 Spring A-G Courses with 20+ Ds

Course	D/D-/D+	Course	D/D-/D+	Course	D/D-/D+
Algebra 1	116	Spanish 2	49	Digital Photo	23
Geometry	94	English 10	45	Biology (S)	22
Spanish 1	85	English 9	44	AP Calc AB	20
Algebra 2	75	Art Structure 1	41	US History (S)	20
Biology	74	English 11	41		
English 12	66	Wrld Hist	40		
Chemistry	56	EarthSpaceSci	40		
Algebra 1 (S)	54	Government	38		
US History	51	Economics	36		



2022-2023 A-G Rate Historical Comparison

2018 – 2019
A-G
49.2%

2020-2021
A-G
49.6%

2021-2022
A-G
50.0%

2022-2023
Projected A-G
51.2%