



**Global Languages Endorsement  
(GLE)  
North Carolina's Seal of Biliteracy  
2017-18**

Last Updated: 3/2018



**TABLE OF CONTENTS**

Introduction .....3

Information and Processing Procedures..... 4

GLE page on the Global Education Wiki .....4

Core English Requirement.....4

Four (4) Course Sequence of Study in the Same World Language .....4

Credit by Demonstrated Mastery (CDM) option .....4

NCDPI Approved External Assessment .....4

How to Enter a Test (External Assessment) .....4

How to Enter a CDM Grade .....7

Tracking Students that May Qualify for the GLE – The Global Languages Endorsement .... 8

Diploma Assessment Report.....8

The GLE Validation Report for Exporting ELA and World Language Courses and Grades .....9

Appendices ..... 11

Appendix I – Global Languages Endorsement in the High School Diploma Endorsements  
Policy GRAD-007..... 11

Appendix II – NCDPI Approved External World Languages Assessment for use with the  
GLE ..... 12

Appendix III – World Language Course Codes by Proficiency Level Outcomes ..... 13

This document is the property of the NC DPI and may not be copied in whole or in part without the express written permission of the NC DPI.

In compliance with federal law, NC Public Schools administers all state-operated educational programs, employment activities and admissions without discrimination because of race, religion, national or ethnic origin, color, age, military service, disability, or gender, except where exemption is appropriate and allowed by law. Inquiries or complaints regarding discrimination issues should be directed to:

Chief Academic Officer  
Academic Services and Instructional Support  
6368 Mail Service Center, Raleigh, NC 27699-6368  
Telephone: (919) 807-3200 Fax: (919) 807-4065

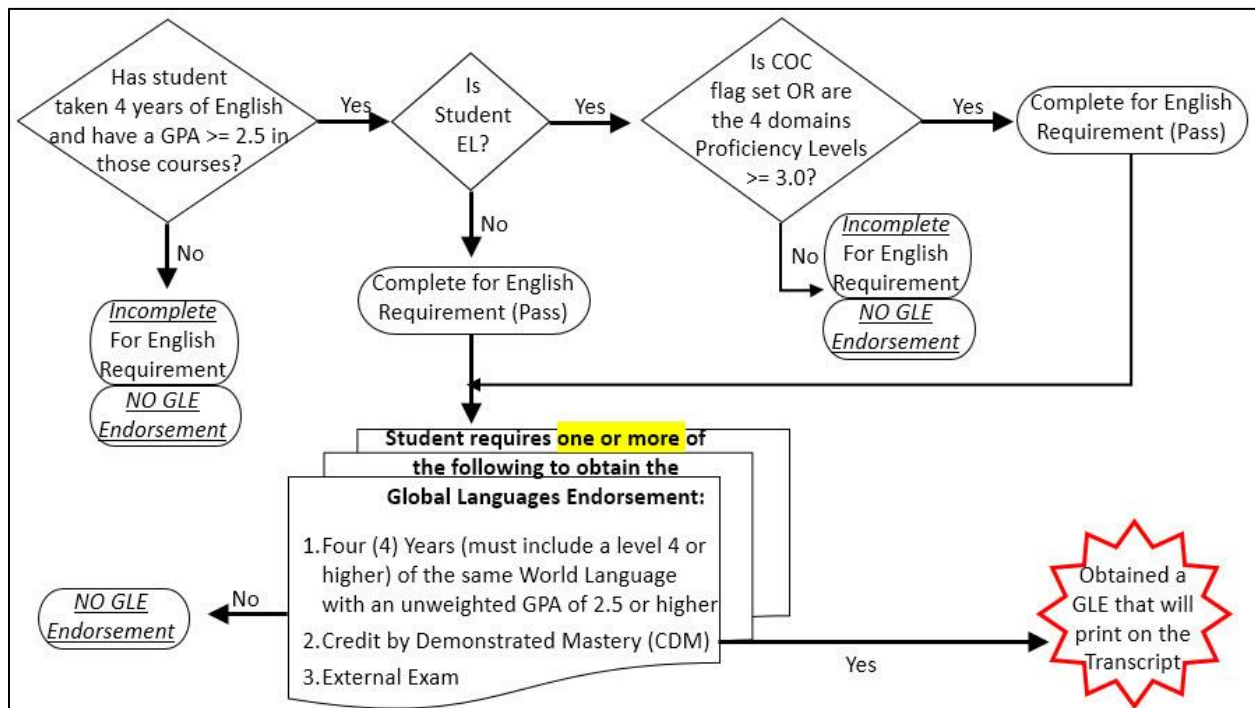
# Introduction

The purpose of this document is to explain how the Global Languages Endorsement (GLE) function works in PowerSchool. The GLE is displayed on a student transcript. The functionality is based on the GLE Policy. The appendix includes the GLE Policy, World Language Course Codes by Proficiency Level and NCDPI Approved External World Language Assessments for use with the Global Languages Endorsement.

Any change to a student’s grade, current or historical, means a recalculation of the GLE process needs to take place. It will look at the student’s core English course requirements and World Language courses, as well as CDM (Credit by Demonstrated Mastery) and other external exams.

In order to receive a GLE, a student must pass the core English requirement (4 years of English with a 2.5 or higher overall unweighted English GPA) **and at least one** of the following:

- A. 4 years (must include a level 4 or higher) of the same World Language with an overall unweighted WL GPA of 2.5 or higher
- B. Credit by Demonstrated Mastery (CDM)
- C. External Exam



## Information and Processing Procedures

---

### GLE page on the Global Education Wiki

<http://gled.ncdpi.wikispaces.net/Global+Languages+Endorsement>

### Core English Requirement

The core English requirement is complete or 'passed' when a student has earned a combined 2.5 unweighted (or higher) GPA for four (4) English Language Arts courses as required for graduation.

### Four (4) Course Sequence of Study in the Same World Language

The world language course option is achieved by completing a four (4) course of study in the same world language, and earning an overall unweighted GPA of 2.5 or above taken at the high school.

*Note:* The process will search for a Level IV World Language course (or higher) to meet this requirement.

### Credit by Demonstrated Mastery (CDM) option

In order for the process to find the CDM grade, it must be entered into PowerSchool as a historical grade.

### NCDPI Approved External Assessment

Pass an external exam approved by the North Carolina Department of Public Instruction establishing "Intermediate Low" proficiency or higher per the ACTFL proficiency scale. This test must be manually entered into the student's academic page.

### How to Enter a Test (External Assessment)

Enter a test at the student page level as a new test.

**Navigation: Start Page > Search for and open a student record > Academics > Test Results**

1. Select a test from the **Enter New Test** dropdown list

*Note:* The test must be on the approved External World Language Assessment list for use with the GLE document found in Appendix II.

The **New Student Test Screen** is displayed.

## New Student Test

The screenshot shows a web form titled "New Student Test". The form fields are as follows:

- Test:** Alira
- Date:** 5/1/2018 (highlighted with a red box)
- Term:** 2017-2018 (highlighted with a red box)
- Grade Level:** 12 (highlighted with a red box)
- Test School Name:** (empty text box)
- Test School Number:** (empty text box)
- Exemption Code:** Select Exemption Code (dropdown menu)
- Form Type:** Select Form Type Code (dropdown menu)
- Show on Transcript:** Yes (dropdown menu, highlighted with a red box)
- Test Passed:** Yes (dropdown menu, highlighted with a red box)
- Accommodations:** (Hold the CTRL key to select multiple items)
  - Adaptations to DPI-Prov. Manipulatives
  - Assistive Technology Devices
  - Braille Writer/Slate and Stylus
  - Cranmer Abacus
  - Dictation to a Scribe
  - English Braille American Edition (EBAE)
  - Hospital Home Testing
  - Interpreter/Trans. Signs/Cues Test
  - Keyboarding Devices
  - Large Print Edition
- Submit:** (button, highlighted with a red box)

- Date** – Select May 1, 2018 ! Always use **May 1** as the month/day
- Term** – Enter 2017-2018
- Grade Level** – Enter the student current grade level
- Test School Name** – (optional)
- Test School Number** – (optional)
- Exemption Code** – Leave current option “Select Exemption Code”
- Form Type** – Leave current option “Select Form Type Code”
- Show on Transcript** – Select **Yes**
- Test Passed** – Select **Yes**
- Accommodations** – Do NOT select an accommodation
- Click **Submit**

### Enter Test Score(s) screen

- Raw Score** – Enter the score of the test based on the values found in Appendix II. It varies with the test.
- Language** – Enter the name of the language. Do NOT include course number, or level (i.e. enter French not French IV)
- Click **Submit**

### Enter Test Score(s)

| Score Name/Type | Score                              |
|-----------------|------------------------------------|
| Raw Score       | <input type="text" value="13"/>    |
| Language        | <input type="text" value="Latin"/> |

based on  
Appendix II values

| Name  | Minimum Requirements      | Report (raw score)   | Enter into PowerSchool Transcript   |
|---|---------------------------|--|---|
| <a href="#">ALIRA</a><br>ACTFL's Latin Interpretive Reading Assessment<br><br><i>Language(s):</i><br>Latin  | Interpretive Reading Test | 11 - Intermediate Low<br>12, 13, 14 - Intermediate Mid<br>15 - Intermediate High<br>A - Advanced Low | Intermediate Low<br>Intermediate Mid<br>Intermediate High<br>Advanced Low |
| <a href="#">AP</a><br>Advanced Placement World Languages<br><br><i>Language(s):</i><br>Chinese, French, German, Italian, Japanese, Latin, Spanish | Full Test                 | Score of 3<br>Score of 4<br>Score of 5   | Intermediate Low<br>Intermediate Mid<br>Advanced Low                      |
| <a href="#">CAMBRIDGE</a><br>Cambridge International Exams - AS Level and   | Full Test                 | Grade C or higher on AS Level exam<br><br>Grade C or higher on A Level exam                          | Intermediate Low<br><br>Intermediate Mid                                  |

## How to Enter a CDM Grade

A student 'testing out' of a course receives a 'CDM' as a grade for the course. All courses receiving a grade of CDM must be added in as historical grades.

**Navigation:** Start Page > Search for and open a student record > Under Academics > Historical Grades

**Historical Grades**

Multiple New Entries Single New Entry Previous School Names Detail View Run UNC

| Year/Term | Grd Lvl | Course number | Course | Earned Credit | A1 | A2 | E1 | F1 | N1 | N2 | N3 | N4 | S1 | S2 |
|-----------|---------|---------------|--------|---------------|----|----|----|----|----|----|----|----|----|----|
|           |         |               |        |               |    |    |    |    |    |    |    |    |    |    |

**Link to the QRD to assist with entering a CDM Grade:**

[http://www.nc-sis.org/Documents/student\\_info/PS\\_QRD\\_Creditby\\_Demonstrated\\_Mastery.pdf](http://www.nc-sis.org/Documents/student_info/PS_QRD_Creditby_Demonstrated_Mastery.pdf)



# Tracking Students that May Qualify for the GLE – The Global Languages Endorsement

## Diploma Assessment Report

This displays a list of students qualifying for one or more high school diploma endorsements. The minimum requirements for the GLE are listed at the far right of the report.

**Navigation:** Start Page > System Reports > NCDPI Reports > Under Graduation Planner > Diploma Assessment Report

**Reports**

System | ReportWorks | State Reporting Dashboard | State Standalone Reports | Engine | Setup

Enterprise Reporting | **NCDPI Reports** | sqlFormLetters Lite | sqlReports 4

| North Carolina Specific Reports        | Description   |
|--|---|
| North Carolina Standards Report Card   | The standards report card for K-12 schools for the state of North Carolina.   |
| North Carolina Traditional Report Card | The traditional report card for K-12 schools for the state of North Carolina. |
| North Carolina Transcript              | The high school transcript for the state of North Carolina.                   |
| North Carolina Historical Transcript   | The high school transcript for the state of North Carolina.                   |
| North Carolina SADLS Reports           | Reports to determine if students should have their driver's licenses revoked. |
| North Carolina Cumulative Folder       | The Cumulative Folder report for the state of North Carolina.                 |
| Graduation Planner                     | Description   |
| <b>Diploma Assessment Report</b>       | Student progress toward graduation.   |

**Reports**

- System Reports**
- ReportWorks
- State Reports
- Standalone Reports

**Diploma Assessment Report - 12/18/2017 15:07:50**

Copy | CSV | Excel | PDF | Print

Show 100 entries

| LEA | School | Student Number | Grade | First | MI | Last | Gender | DOB | FRC   | UNC | CPR | Math Rigor | CTE Concentrators | Career |
|-----|--------|----------------|-------|-------|----|------|--------|-----|-------|-----|-----|------------|-------------------|--------|
| 920 | 583    |                |       |       |    |      |        |     | Yes + | No  | No  | Yes        | No                | No     |
| 920 | 583    |                |       |       |    |      |        |     | Yes + | No  | Yes | Yes        | No                | No     |
| 920 | 583    |                |       |       |    |      |        |     | No    | No  | No  | Yes        | No                | No     |

Search:

| College | College-UNC | NC Scholar | GLE-English | GLE-Demonstrated Mastery | GLE-Other World Language |
|---------|-------------|------------|-------------|--------------------------|--------------------------|
| Yes     | Yes         | No         | Yes         | No                       | Yes                      |
| Yes     | Yes         | No         | No          | No                       | No                       |
| No      | No          | No         | No          | No                       | No                       |





### The GLE Validation Report for Exporting ELA and World Language Courses and Grades

A school/district may like to keep track of students that could qualify for the GLE or to determine why a student may not show up on the Diploma Assessment Report because they have not qualified based on GPA.

This report is meant to assist schools by showing students completed course work in ELA, World Languages and CDM (Credit by Demonstrated Mastery). **THIS IS NOT AN OFFICIAL DOCUMENT.**

*This is just to export the data into Excel so the user can grab all the courses and average the points to see the 'overall GPA' for the core English courses and/or the World Language courses.*

**Important:** This report can ONLY be run at the School level.

**Navigation:** Start Page > System Reports > sqlReports 4 > GLE > Global Languages Endorsement - Validation

This report pulls active grade 12 and 13 students that have completed World Language (WL) courses and/or gained a CDM (Credit by Demonstrated Mastery) for World Languages. The report will display the following:

1. Completed WL courses (including those for HS credit completed during the middle school years) and unweighted GPA per course AND
2. Completed English Language Arts (ELA) courses and unweighted GPA per course.

The report will flag students who are currently English Learners (ELs) and their latest English Language Proficiency score, which must be at Developing or above to meet the requirement along with the ELA and WL requirements.

Once generated, the data can be copied, exported, or printed. The ELA and World Languages GPA can be manually calculated from the data provided in the GPA Points column

| School Number | Student Number | Student Name | Current Grade Level | Course Grade Level | Course Number | Course Name | Grade |             |
|---------------|----------------|--------------|---------------------|--------------------|---------------|-------------|-------|-------------|
| 490362        | 34020          | Aladdin,     | 12                  | 9                  | 11435X0       | SPANISH III | 98    |             |
| 490362        | 34020          | Aladdin,     | 12                  | 10                 | 11445X0       | Spanish IV  | 93    |             |
|               |                |              | Potential Credits   | Earned Credits     | GPA Points    | In Progress | LEP   | ACCESS Test |
|               |                |              | 1                   | 1                  | 4             | N           | N     |             |
|               |                |              | 1                   | 1                  | 3.625         | N           | N     |             |



It will also display students' ELA courses and the overall proficiency level on the ACCESS test if applicable.

Only students with the following 4th level or higher World Language will pull for this report:

11045X0, 11042Y0, 11055X0, 11065X0, 11075X0, 11085X0, 11245X0, 11242Y0, 11255X0, 11265X0, 11275X0, 11285X0, 11445X0, 11442Y0, 11455X0, 11465X0, 11475X0, 11485X0, 11645X0, 11642Y0, 11655X0, 11665X0, 11675X0, 11685X0, 11845X0, 11842Y0, 11855X0, 11865X0, 11875X0, 11885X0, 12045X0, 12055X0, 12065X0, 12075X0, 12085X0, 12245X0, 12255X0, 12265X0, 12275X0, 12285X0, 12445X0, 12455X0, 12465X0, 12545X0, 12555X0, 12565X0, 12645X0, 12642Y0, 12655X0, 12665X0, 12675X0, 12685X0, 12845X0, 12855X0, 12865X0, 12875X0, 12885X0, 13045X0, 13055X0, 13065X0, 13075X0, 13085X0, 13245X0, 13242Y0, 13255X0, 13265X0, 13275X0, 13285X0, 13445X0, 13455X0, 13465X0, 13475X0, 13485X0, 13645X0, 13655X0, 13665X0, 13675X0, 13685X0, 1A027X0, 1A037X0, 1A047X0, 1A057X0, 1A067X0, 1A077X0, 1A087X0, 1A097X0, 1I058X0, 1I068X0, 1I078X0, 1I088X0, 1I098X0, 1I108X0, 1I118X0, 1I128X0, 1I138X0, 1I148X0, 1I158X0, 1I168X0, 1I228X0, 1I238X0, 1I248X0, 1C205X0, 1C215X0, 1C395X0, 1C405X0, 1C415X0, 1C505X0, 1C515X0, 1C525X0, 1C705X0, 1C715X0, 1C725X0, 1C755X0, 1C855X0, 1C895X0, 1C935X0, 1D125X0, 1D135X0, 1D145X0, 1D185X0, 1D195X0, 1D205X0, 1D255X0, 1D265X0, 1D275X0, 1D325X0, 1V048X0, 1V058X0

**Note:** Any external assessments used for this purpose will not display on this report. Enter the information from the DPI approved external test in step 2 under "Enter a Test".

## Appendices

---

### **Appendix I – Global Languages Endorsement in the High School Diploma Endorsements Policy GRAD-007**

*The State Board of Education passed a Global Languages Endorsement in January 2015, part of SBE policy GRAD-007, which is one of 5 high school diploma endorsements that can be earned starting with the 2014-15 school year.*

#### *5) Global Languages Endorsement*

- a) The student shall earn a combined unweighted 2.5 GPA for the four English Language Arts courses required for graduation.*
- b) The student shall establish proficiency in one or more languages in addition to English, using one of the options outlined below and in accordance with the guidelines developed by the North Carolina Department of Public Instruction.*

- i. Pass an external exam approved by the North Carolina Department of Public Instruction establishing "Intermediate Low" proficiency or higher per the American Council on the Teaching of Foreign Languages (ACTFL) proficiency scale.*

- ii. Complete a four-course sequence of study in the same world language, earning an overall unweighted GPA of 2.5 or above in those courses.*

- iii. Establish "Intermediate Low" proficiency or higher per the ACTFL proficiency scale using the Credit by Demonstrated Mastery policy described in CCRE-001.*

- c) Limited English Proficiency students shall complete all the requirements of sections 5a and 5b above and reach "Developing" proficiency per the World-Class Instructional Design and Assessment (WIDA) proficiency scale in all four domains on the most recent state identified English language proficiency test.*

## **Appendix II – NCDPI Approved External World Languages Assessment for use with the GLE**

If one of the external assessments is used to meet the World Languages requirement for the Global Languages Endorsement, then a copy of the score report is to be placed in the student's permanent file.

Each of the tests listed may be used to satisfy this option requirement. There is a conversion chart to use to guide your data manager as to which proficiency level to enter and what will show on the student transcript.

The following link takes you to a table listing the DPI approved vendor exams, the minimum requirements for skills tests and score report conversions.

As indicated on individual tests, if there is no composite score, use the lowest score on the test that involves literacy and/or communication with other for the proficiency rating.

Here is the link to the newest List of NCDPI Approved External World Language Assessments, which is posted on the GLE page of the Global Education Wiki:

[List of NCDPI Approved External World Language Assessments](#)

## Appendix III – World Language Course Codes by Proficiency Level Outcomes

World Language Course Codes by Proficiency Level Outcomes  
For Credit by Demonstrated Mastery (CDM) especially pertaining to the  
Global Languages Endorsement GRAD-007: 5.b (iii)

[North Carolina State Board of Education Policy Manual online at <https://stateboard.ncpublicschools.gov/policy-manual>]

[Here is the link to the current version of the World Language Course Codes for CDM Proficiency Levels, which is posted on the GLE page of the Global Education Wiki:](#)

[World Languages Course Codes for Credit by Demonstrated Mastery \(CDM\) Proficiency Levels](#)

| <b>Intermediate Low (IL) proficiency</b> |                              |   |   |  |  |
|--|------------------------------|---|---|--|--|
| K-12<br>PowerSchool Course Information   |                              | Community College<br>PowerSchool Course Information |   |  |  |
| 11045X0                                  | French IV Honors             | 1C395X0   | Intermediate French II<br>(FRE 212 and FRE 282)     | <b>Level IV Modern<br/>(Alphabetic)</b>  |  |
| 11445X0                                  | Spanish IV Honors            | 1C205X0   | Intermediate Spanish II<br>(SPA 212 and SPA 282)    |  |  |
| 11645X0                                  | German IV Honors             | 1C505X0   | Intermediate German II<br>(GER 212 and GER 282)     |  |  |
| 12045X0                                  | Russian IV Honors            | 1D255X0   | Intermediate Russian II<br>(RUS 212 and RUS 282)    |  |  |
| 12245X0                                  | Arabic IV Honors             | 1C935X0   | Intermediate Arabic II<br>(ARA 212)                 |  |  |
| 12645X0                                  | Cherokee IV Honors           |   |   |  |  |
| 13245X0                                  | Greek IV Honors              |   |   |  |  |
| 13445X0                                  | Hebrew IV Honors             |   |   |  |  |
| 13645X0                                  | Italian IV Honors            | 1C705X0   | Intermediate Italian II<br>(ITA 212 and ITA 282)    | <b>Level IV Modern<br/>(Logographic)</b> |  |
| 11245X0                                  | Chinese IV Honors            | 1C755X0   | Intermediate Chinese II<br>(CHI 212)                |  |  |
| 11845X0                                  | Japanese IV Honors           | 1C855X0   | Intermediate Japanese II<br>(JPN 212)               | <b>Level IV Modern<br/>(Visual)</b>      |  |
| 12845X0                                  | ASL IV Honors                | 1C895X0   | Intermediate ASL II<br>(ASL 212 and ASL 282)        |  |  |
| 13045X0                                  | Other Foreign Lang IV Honors | 1D185X0   | Intermediate Portuguese II<br>(POR 212 and POR 282) | <b>Level IV Modern</b>                   |  |

| <b>Intermediate Low (IL) - Intermediate Mid (IM) proficiency</b> |                               |         |  |                                     |
|--|-------------------------------|---------|--|-------------------------------------|
| 11255X0  | Chinese V Honors              |         |  | <b>Level V Modern (Logographic)</b> |
| 11855X0  | Japanese V Honors             |         |  |                                     |
| 12435X0  | Latin III Honors              | 1D025X0 | Intermediate Latin I (LAT 211 and LAT 281) | <b>Level III Classical</b>          |
| 12535X0  | Oth Classical Lang III Honors |         |  |                                     |

| <b>Intermediate Mid (IM) proficiency</b> |                         |         |                                   |                                    |
|--|-------------------------|---------|-----------------------------------|------------------------------------|
| 11055X0                                  | French V Honors         | 1C405X0 | French Conversation (FRE 221)     | <b>Level V Modern (Alphabetic)</b> |
| 11455X0                                  | Spanish V Honors        | 1C215X0 | Spanish Conversation (SPA 221)    |                                    |
| 11655X0                                  | German V Honors         | 1C515X0 | German Conversation (GER 221)     |                                    |
| 12055X0                                  | Russian V Honors        | 1D265X0 | Russian Conversation (RUS 221)    |                                    |
| 12255X0                                  | Arabic V Honors         |         |                                   |                                    |
| 12655X0                                  | Cherokee V Honors       |         |                                   |                                    |
| 13255X0                                  | Greek V Honors          |         |                                   |                                    |
| 13455X0                                  | Hebrew V Honors         |         |                                   |                                    |
| 13655X0                                  | Italian V Honors        | 1C715X0 | Italian Conversation (ITA 221)    |                                    |
| 12855X0                                  | ASL V Honors            |         |                                   |                                    |
| 13055X0                                  | Other For Lang V Honors | 1D195X0 | Portuguese Conversation (POR 221) | <b>Level V Modern</b>              |

| <b>Intermediate Mid (IM) - Intermediate High (IH) proficiency</b> |                    |                                      |
|---|--------------------|--------------------------------------|
| 11265X0   | Chinese VI Honors  | <b>Level VI Modern (Logographic)</b> |
| 11865X0   | Japanese VI Honors |                                      |

| <b>Intermediate Mid (IM) - Advanced Low (AL) proficiency</b> |                    |                                       |
|--|--------------------|---------------------------------------|
| 11275X0  | Chinese VII Honors | <b>Level VII Modern (Logographic)</b> |



|         |                     |  |
|---------|---------------------|--|
| 11875X0 | Japanese VII Honors |  |
|---------|---------------------|--|

| <b>Intermediate High (IH) proficiency</b> |                              |         |   |                                     |
|---|------------------------------|---------|---|-------------------------------------|
| 11065X0                                   | French VI Honors             | 1C415X0 | Reading and Composition (FRE 231)           | <b>Level VI Modern (Alphabetic)</b> |
| 11465X0                                   | Spanish VI Honors            | 1D325X0 | Reading and Composition (SPA 231)           |                                     |
| 11665X0                                   | German VI Honors             | 1C525X0 | Reading and Composition (GER 231)           |                                     |
| 12065X0                                   | Russian VI Honors            | 1D275X0 | Reading and Composition (RUS 231)           |                                     |
| 12265X0                                   | Arabic VI Honors             |         |   | <b>Level VI Modern (Visual)</b>     |
| 12665X0                                   | Cherokee VI Honors           |         |   |                                     |
| 13265X0                                   | Greek VI Honors              |         |   |                                     |
| 13465X0                                   | Hebrew VI Honors             |         |   |                                     |
| 13665X0                                   | Italian VI Honors            | 1C725X0 | Reading and Composition (ITA 231)           |                                     |
| 12865X0                                   | ASL VI Honors                |         |   | <b>Level VI Modern (Visual)</b>     |
| 12445X0                                   | Latin IV Honors              | 1D125X0 | Intermediate Latin II (LAT 212 and LAT 282) | <b>Level IV Classical</b>           |
| 12545X0                                   | Oth Classical Lang IV Honors |         |   |                                     |
| 13065X0                                   | Other Foreign Lang VI Honors | 1D205X0 | Reading and Composition (POR 231)           | <b>Level VI Modern</b>              |

| <b>Intermediate High (IH) - Advanced Low (AL) proficiency</b> |                      |  |
|---|----------------------|--|
| 11285X0   | Chinese VIII Honors  | <b>Level VIII Modern (Logographic)</b> |
| 11885X0   | Japanese VIII Honors |  |

| <b>Advanced Low (AL) proficiency</b> |                     |                                      |
|--------------------------------------|---------------------|--------------------------------------|
| 11075X0                              | French VII Honors   | <b>Level VII Modern (Alphabetic)</b> |
| 11475X0                              | Spanish VII Honors  |                                      |
| 11675X0                              | German VII Honors   |                                      |
| 12075X0                              | Russian VII Honors  |                                      |
| 12275X0                              | Arabic VII Honors   |                                      |
| 12675X0                              | Cherokee VII Honors |                                      |
| 13275X0                              | Greek VII Honors    |                                      |



|         |                                     |         |                                   |                                   |
|---------|-------------------------------------|---------|-----------------------------------|-----------------------------------|
| 13475X0 | Hebrew VII Honors                   |         |                                   |                                   |
| 13675X0 | Italian VII Honors                  |         |                                   |                                   |
| 12455X0 | Latin V Honors                      | 1D135X0 | Reading and Composition (LAT 231) | <b>Level V Classical</b>          |
| 12555X0 | Oth Classical Lang V Honors         |         |                                   |                                   |
| 12875X0 | ASL VII Honors                      |         |                                   | <b>Level VII Modern (Visual)</b>  |
| 13075X0 | Other Foreign Lang (OFL) VII Honors |         |                                   | <b>Level VII Modern</b>           |
| 12885X0 | ASL VIII Honors                     |         |                                   | <b>Level VIII Modern (Visual)</b> |

|  |  |  |
|--|--|--|
|  |  |  |
|  |  |  |

|                                      |                                      |         |                                       |                           |
|--------------------------------------|--------------------------------------|---------|---------------------------------------|---------------------------|
| <b>Advanced Mid (AM) proficiency</b> |                                      |         |                                       |                           |
| 11085X0                              | French VIII Honors                   |         | <b>Level VIII Modern (Alphabetic)</b> |                           |
| 11485X0                              | Spanish VIII Honors                  |         |                                       |                           |
| 11685X0                              | German VIII Honors                   |         |                                       |                           |
| 12085X0                              | Russian VIII Honors                  |         |                                       |                           |
| 12285X0                              | Arabic VIII Honors                   |         |                                       |                           |
| 12685X0                              | Cherokee VIII Honors                 |         |                                       |                           |
| 13285X0                              | Greek VIII Honors                    |         |                                       |                           |
| 13485X0                              | Hebrew VIII Honors                   |         |                                       |                           |
| 13685X0                              | Italian VIII Honors                  |         |                                       |                           |
| 12465X0                              | Latin VI Honors                      | 1D145X0 | Imperial Literature (LAT 232)         | <b>Level VI Classical</b> |
| 12565X0                              | Oth Classical Lang VI Honors         |         |                                       |                           |
| 13085X0                              | Other Foreign Lang (OFL) VIII Honors |         |                                       | <b>Level VIII Modern</b>  |