



HOOFPRINTS



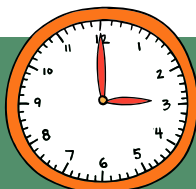
School starts on August 5th! This newsletter contains information about **Open House**, including the required forms and instructions. You will receive an email from Pickup Patrol after July 31st.

Principal Ayo Richardson's letter on [pages 6–8](#), shares what to expect for 2024–25. Information in this edition is subject to change. Updated information will be sent if needed.

PTA Co-Presidents Katie Jones and Tasha Barton have organized the committees and programs to help our school succeed. Read their message on [page 16](#).

Over 80% of PTA funding goes to students and classrooms. This year we will hold our major fundraiser, Holiday Extravaganza. See page 15 and go to our PTA website, mpepta.com, for more information.

Follow us on Twitter [@MPE_Mustangs](#) or Instagram [@mpeptaroswellga](#), find us on Facebook, [Mountain Park Elementary Mustangs](#), read your emails from your teacher(s) and Room Parents, check out the school website mountainpark.fultonschools.org and look for the weekly Mustang Flyer e-blast every Thursday.



arrival and dismissal times :
7:10AM Doors Open
7:40AM Tardy Bell
(students must be in class)
2:20PM Dismissal Begins

Table of Contents

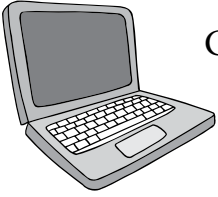
OPEN HOUSE INFO:

Easy Step-By-Step Instructions.....	2–3
Campus Parent.....	4
Clinic.....	4
School Supplies.....	5
Meal Payments Plus.....	5
Principal's Message.....	6–8
School Governance Council.....	9
SEM.....	10–11
MPE Administration Support Staff.....	12
New MPE Staff.....	13
Talented and Gifted.....	14
How to Stay Connected.....	14
MPE Marquee.....	14
Room Parent Info.....	15
Holiday Extravaganza.....	15
PTA Co-Presidents' Message.....	16
Online School Directory.....	16
Join the PTA.....	17
Transportation: Pickup Patrol, FAQs & Bus Numbers ..	18–19
School Safety/Emergency Procedures.....	20
Family Photo Fundraiser.....	20
Yearbook.....	20
School Clubs & Drama Club Presents.....	21
Right At School After School Program.....	21
Reflections & Square 1 Art.....	22
Girl Scouts.....	22
Cub Scouts.....	22
Fulton County Schools Calendar.....	23

Student late check-in, early check-out

We will continue to use the Checkmate System. You will be able to check your student in or out on the computers in the vestibule with support from our front office staff. We look forward to using this system again this year.

PRIOR TO OPEN HOUSE



Complete the Student Information Form, register or log in to PickUp Patrol, join PTA online, and complete clinic forms (if applicable).

Please complete these steps prior to August 2, 2024.

» Register or log in to PickUp Patrol

- ☐ Returning MPE families will use the same PickUp Patrol log in from last year. Returning families need to log in before Open House and update their student's default plan. Please make sure to double check the bus information because bus numbers and colors change from year to year. New MPE families will receive an email from [PickUp Patrol](#) with a registration link to set up your account after July 31. You will create an account, then enter your child's default plan (how they will NORMALLY go home). If you do not receive an email, contact Shannon Anderson andersons5@fultonschools.org. This step must be completed **BEFORE Open House**.

Please register for each student.

Link: <https://www.pickuppatrol.net>

» Complete the Student Information Form

Please grant permissions for **EACH STUDENT** for photos, Internet, Clinic, etc.

- ☐ Complete the Student Information Form. (*for each student*)

Link: <https://forms.office.com/r/bRj7u6F7mv>

» Join the PTA

Your PTA membership supports the school with necessary programs such as School-Wide Enrichment Model, classroom and clinic supplies, facility enhancement, staff appreciation, cultural arts activities, family events and much more! See page 17 for details.

- ☐ Join the PTA and make a donation on our website.

Link: <https://my.cheddarup.com/c/2024-2025-pta-membership-drive>

» Complete Clinic Forms

Students who regularly take medication can do so in the clinic. Please bring these forms and the medication with you at Open House. Forms can be brought to the clinic at Open House or any time during the year.

These forms must be printed out and signed by your physician for prescription medication. See page 4 for details.

- ☐ To have medication in the clinic **SHS-1**:

<https://mountainpark.fultonschools.org/fs/resource-manager/view/62843c12-17e4-4cf2-bead-4eccc30d3efc>

- ☐ To carry meds at school: **SHS-2** (*Emergency meds i.e. Epi-pen only*)

<https://mountainpark.fultonschools.org/fs/resource-manager/view/0ae43133-2257-437f-8329-f9fa0c354838>

MUST DO!

☐ Register or log in to **PickUp Patrol**

☐ Join the **PTA**

☐ Complete the **Student Information Form**

☐ Fill out online **Clinic forms**, if needed

Last names beginning A–L 10:30AM–12:00PM
Last names beginning M–Z 8:30AM–10:00AM

STEP 1 » Check-in

Check-in at the front of the school to receive your student ID card, teacher name, and schedule (3rd, 4th, and 5th graders).

STEP 2 » Visit the PTA

Visit the PTA to pick up your packet if you have joined and learn about opportunities to help.

STEP 3 » Transportation

It is critical that we know how students are going home each day. Transportation details and our dismissal system can be found on pages 18–19. Transportation, carpool tags, and bus help are available in the Media Center.

- ☐ For bus riders, find your bus number:
 1. **Starting July 31st**, Go to: <https://edulogweb.fultonschools.org/livewq/webquery>
 2. Enter your address and grade level
 3. Click on MountainParkES
 4. Note your bus stops, times, and bus number
 5. See page 19 for corresponding bus color/animal *i.e.* Yellow Duck or Green Frog
- ☐ Returning families will log in to their PickUp Patrol account and update their student's default plan prior to Open House. New Families will register with [PickUp Patrol](#) using the link sent to their email after July 31. You will create an account, then enter your child's default plan (how they will NORMALLY go home). This step must be completed **BEFORE Open House**. Please register for each student.
- ☐ Carpool/Walkers/Bike Riders: Mountain Park families that already have a carpool number will keep the same number for 24–25. If you need a replacement or are a new MPE family, carpool tags are available in the Media Center at Open House. Always have your number visible when you go through the carpool lane.

STEP 4 » Clinic

If you need to bring medication to the clinic, please bring the clinic forms. The forms must be printed and signed by your physician for prescription medication. See page 4 for details.

STEP 5 » Breakfast & Lunch at School

- ☐ Add money to your student's account for lunch and snacks.
Student account link (see page 5 for details):
Meal prices: <https://nutrition.fultonschools.org/MealPrices>
MyPaymentsPlus: <https://www.mypaymentsplus.com/welcome>

STEP 6 » After-School Care (if needed) & After-School Programs

- ☐ If you need after-school care, sign up for Right At School here:
<https://www.rightatschool.com/school/?school=mountain-park-elementary&district=ga-fulton&tab=2024-25-after-school>
- ☐ Visit the gym for information on other after-school programs and activities and business partners.

CAMPUS PARENT

Fulton County Schools utilizes Campus Parent as the student information system.

Campus Parent is designed to provide real-time access to student information. The easy-to-use design shares information so that you can monitor your student. In this platform, parents can browse assignments, review attendance, and see grades.

You can access Campus Parent at:

<https://www.fultonschools.org/infinitecampus>

Current Parents

All current parents should already have a Campus Parent account. If you need help accessing your account, please email our Data Clerk, Judy Lagasse, at lagasse@fultonschools.org.

Do you have a new student enrolling at Mountain Park, but you already have a child currently enrolled in Fulton County Schools?

Log in to the Campus Parent to add a student to your household. You can access Campus Parent at:

<https://www.fultonschools.org/infinitecampus>

Click on Online Registration. Then choose the applicable registration option for your child, and follow the steps.

Are you new to Fulton County Schools?

At Open House, your child will receive a student ID number. Once you have your student's ID number, you can go to:

<https://www.fultonschools.org/infinitecampus> and click on the right-hand side where it says: "To set-up your account, please enter your email here: Campus Parent Portal Activation." This will take you to a page where you can enter your email. The email will give you a link to enter your child's name, student ID number, and grade level, and set up your account.

CLINIC

We are fortunate to have two amazing clinic assistants at MPE! Ms. Barb Bruno & Ms. Lindsay Rocco (brunob@fultonschools.org and roccol@fultonschools.org) share the job of supporting our students with extra TLC and caring for bumps, cuts, and bruises throughout the day. If a student feels ill, Ms. Bruno or Ms. Rocco will assess their symptoms and call parents.

We take care of common needs like Band-Aids, wax for braces, ice packs for small bumps and bruises without calling parents, unless requested. For any more serious injury or condition, parents will be contacted.

We ask that all of our parents continue to be extra vigilant this year and not send students to school with any symptoms. We need to keep everyone safe.



Please bring these forms with you when you bring the medication.

To have medication in the clinic SHS-1:

<https://mountainpark.fultonschools.org/fs/resource-manager/view/62843c12-17e4-4cf2-bead-4eccc30d3efc>

To carry meds at school: SHS-2 (Emergency meds i.e. Epi-pen only)

<https://mountainpark.fultonschools.org/fs/resource-manager/view/0ae43133-2257-437f-8329-f9fa0c354838>



SCHOOL SUPPLIES



The school supply list for each grade level is available on the MPE website at: mountainpark.fultonschools.org

We are offering a convenient school supply delivery service. If you haven't ordered already, you can still go online and have your child's supplies shipped directly to your home. **School Tool Box** will also be donating a small portion of all sales back to MPE.

Please order by July 19 in order to receive supplies before the first day of school without expedited shipping.

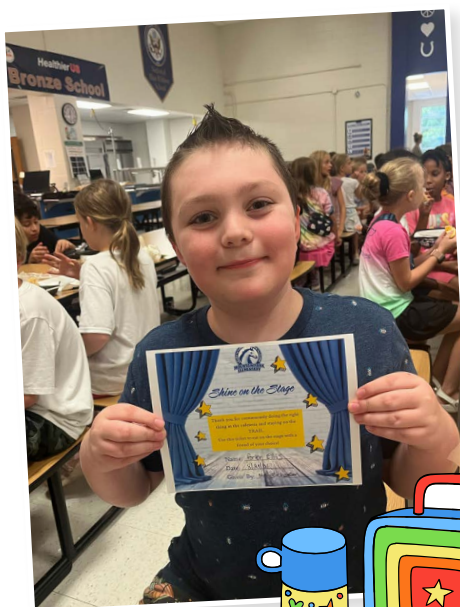
Check it out at: schooltoolbox.com

MPE Direct link: <https://schooltoolbox.com/school-supplies/school/list-boxes/?schoolId=27452>



HANDY TIP

Bring school supplies during Open House to the classroom so your child doesn't have to carry them in on the first day of school.



MyPaymentsPlus

Families can pre-pay for school meals online via MyPaymentsPlus! This system will enable you to make payments to your child's meal account quickly and securely. You may want to use a MyPaymentsPlus account to allow your student to purchase "extras" in the cafeteria, chips, extra milk, or entrée, etc. You will have access to review your balance and see what your child is purchasing on their account. *There is a small transaction fee for this service.*

Get started today

1. Have your child's Student ID number ready. Current students know their number, new students will receive their number at Open House.
2. Log in to www.MyPaymentsPlus.com.
3. Register your child into the K-12 school meals pre-payment system.
4. Make a pre-payment or view your child's purchase history.

Check out school menus online at www.fultonschools.org and click Food Menus on the main page.

HANDY TIP

Mark your child's personal items with their name in permanent marker. Any unclaimed items from Lost and Found are donated once a month to North Fulton Charities.

Principal Ayo Richardson Shares Important Insights and Updates

After a fun and refreshing summer, it is my honor to welcome back the students, families, and staff of our amazing school. My first two years at Mountain Park have been nothing short of amazing and I anticipate the journey only getting better as the years progress. It is my hope that your summer was also filled with fun memories and provided an opportunity for all to recharge for the 2024–2025 school year.

Each day at Mountain Park we strive to help our students develop interests, compassion for others, and a desire to make a positive impact on the world around them. This year, our theme is SHARE THE SPARK. We plan to spark curiosity, creativity, empathy, and success for each student. While maintaining high academic expectations, we desire to ensure our students have fun and memorable experiences during their elementary years. As you read more in this year's edition of the Hoofprints, you'll see that we've provided a framework to ensure every grade level has engaging hands-on projects, exciting field trips, and "pretty cool" Science Lab experiences.

We are so grateful for the support of our community in helping these initiatives grow and blossom. Your involvement in PTA, the MPE Foundation, and as volunteers for special events helps ensure we can continue to offer unique experiences to our students and remain the sweet community school we have all grown to love.

WELCOME



Schoolwide Programs and Updates

Fulton County Schools continues to provide a curriculum that ensures our students have access to high-quality instructional materials and high expectations for learning. We use a structured literacy approach to focus on phonics and word attack skills heavily in grades K–2, ensuring a strong foundation for reading and writing. In the upper grades, students are consistently exposed to a variety of high-level texts, ensuring confident readers and writers. Our teachers will be receiving new instructional resources for math. Training will continue for teachers on the new Georgia Math Standards. Parents can view a variety of resources for all subject areas, including a year at a glance for each course with the standards taught in each unit at the [FCS Parent Curriculum Hub](#).

Schoolwide Enrichment Model (SEM)

The Schoolwide Enrichment Model (SEM) is a framework developed by renowned educational researchers at the University of Connecticut, Sally Reis & Joseph Renzulli. The framework helps schools develop a blueprint for providing systematic enrichment opportunities for all students, not just those in advanced or gifted classes. At MPE, our SEM framework includes hands-on science and social studies projects, designated grade-level field trips and science labs to support the state science standards. See pages 10–11 for an overview of experiences planned for students at each grade level. SEM at MPE is only possible thanks to our incredible PTA! Your donations support the costs of nearly all SEM experiences. Our Science Lab offers the perfect opportunity for parents to come in and work with their children's classes. I am so grateful for your support!

TAG (Talented and Gifted)

Our TAG classes will continue to use the district resource model. Students attend TAG class one full day per week and participate in activities that support Creative Thinking, Advanced Communication, Advanced Research, and Critical

Thinking Skills. Students engage in interdisciplinary units designed to intensify and extend their particular interests and aptitudes. The specialized differentiation and extension of the Fulton County Schools curriculum are accomplished through simulations, individual projects, experiments, debates, student presentations, and more. Our TAG teachers are Ms. Elgin, Ms. Stewart, and Ms. King. More information regarding student schedules, supplies, etc. will come from TAG teachers before Open House.

MPE Garden

Our MPE Garden continues to thrive under the care of MPE teacher Ms. Carrie Stahl. Two pollinator gardens, as well as a kitchen herb garden with mint, oregano, thyme, and tarragon. A strawberry patch can be found in one of the garden boxes, while the other garden boxes include tomatoes, peppers, and okra. We are still awaiting the appearance of our cucumbers and beans! Beautiful flowering perennials have been planted in the remaining garden boxes. Azalea and hydrangeas can be found in the shade garden near the 2nd grade hallway. If you've got a green thumb and would like to contribute to our garden, please contact Ms. Stahl.

Mustang T.R.A.I.L

We will continue to use the TRAIL acronym to help our students remember and follow expectations for positive behavior at school. By explicitly teaching expectations and celebrating when students meet those expectations, we hope to maintain a positive school culture in which students feel safe and can learn at high levels.

T – Trustworthy
R – Respectful
A – Accountable
I – Involved
L – Leader



**Our Mustang's
Name is SPIRIT**

Students will continue to be recognized with positive Office Referrals, Golden Tickets, as well as new and exciting incentives we have planned.

Family Handbook

Our Family Handbook highlights policies and procedures that will help keep our community safe and orderly. Please take some time to read and review with your students. Valuable information can be found about transportation, birthday celebrations, lunch visitors, dress code, and much more! Please reach out to Mrs. Richardson directly with any questions about our Family Handbook.

Construction

Mr. Kramer had a great first year! He seamlessly integrates mathematics, reading, career vocation, and technical skills into the creation of construction projects. I loved seeing the artistic elements he added to the students' projects this year. Students in grades 2–5 will continue to attend Construction class one day per week. This year, we hosted many visitors to our unique program. Mountain Park, Crabapple, and Roswell offer the only elementary-to-high-school feeder program for construction in the state! We were even featured in the AJC! We are so proud of the work of our students and teacher!

Technology and Remote Learning Days

Fulton County Schools provides devices for students on a 1:1 basis. Students in grades K and 1st are assigned iPads, and students in grades 2–5 laptops. This year, the district has purchased device carts for all students in grades K–5 and

has mandated that all devices remain at school overnight. Exceptions can be made on a case-by-case basis as well as for Remote Learning Days. In addition to the remote learning days scheduled on the calendar on page 23, each student may also request up to 5 remote learning days per semester. Remote learning days must be requested at least 5 school days before the first date of the planned absence to ensure teachers have adequate time to gather assignments. Parents are encouraged to use remote learning days to decrease the number of unexcused absences students acquire due to planned family vacations or special events.

Calendar and Attendance

I encourage you to print a copy of our Fulton County Schools 24–25 school year calendar. A link to a printable calendar can be found at [Fulton County Schools / Calendar \(fultonschools.org\)](https://fultonschools.org). This year's calendar includes remote days in which students will engage in learning along with teacher work days and professional development days when students are off. Teachers will communicate expectations for remote days in advance. Parents can find general information about Remote Learning on our MPE website. [General Information/Remote Learning \(fultonschools.org\)](https://fultonschools.org)

It is vitally important that students attend school when they are well enough to do so. Teachers take attendance each morning, marking students present or absent by 8AM. Absences, late arrivals, and early check-outs are considered unexcused until an excuse note is provided by parents, guardians, or healthcare providers. Students with pre-planned absences are entered into IC as absent until updated by our registrar. Parents/guardians should submit an excuse note for each day the student is absent. Excuse notes must be submitted within 5 days of the absence. Parents should email both the homeroom teacher and the MPE attendance mailbox at mpeattendance@fultonschools.org.

Please be aware that after 5 absences (excused or unexcused), a district-generated automatic notification is sent out to families.

Playground Updates

Last year our community came together in a big way to raise \$200,000 for a new playground on our lower field. The playground order was placed in April. We anticipate the playground will be completed and ready for use by the end of August. We will keep you posted and plan to host an official ribbon cutting. We are beyond thrilled to have this beautiful playground for our students! An additional portion of the MPE Park Project entailed the resodding of our entire field in partnership with Concorde Fire Soccer Club. The contract has been submitted to Fulton County for approval. We anticipate receiving approval and scheduling that portion of the project by the end of August. We'll keep you posted on the progress of both projects in the weekly Mustang Flyer!

PBIS Rewards

All schools in Fulton County use a PBIS (Positive Behavioral Interventions & Supports) framework to encourage positive behavior choices throughout the day. This year our school is using PBIS Rewards to help support our PBIS program. PBIS Rewards is a technology-based management system enabling us to provide behavior incentives to students making good choices. These incentives are in the form of electronic points. Points can be redeemed for privileges, tangible items, access to events, and other similar rewards. Our expectation is that we will see an overall behavior improvement throughout the school and that the number of office referrals will decrease, contributing to an overall more positive learning environment for all students. PBIS Rewards has a Family App that can be downloaded on most smart devices, including phones and tablets. You can find it in the Apple App Store, Google Play, or Amazon App Store. Just search for "PBIS Rewards Family." You will receive a handout with direct access to your child's PBIS account at Open House on August 2nd.

Business Partners and Friends

MPE's business partners and friends provide us with much-appreciated additional support. You can help them help us by participating in any or all of the following programs:

- **Publix Partners:** Enter your phone number each time you shop at any Publix, and we receive 1% of your purchase. Sign up for a [Publix.com](https://corporate.publix.com) account (if you don't already have one), and select Mountain Park on the site! <https://corporate.publix.com/community/corporate-campaigns/publix-partners>
- **Kroger Partners:** If you are a Kroger Plus card holder go to krogercommunityrewards.com to register your card. If you do not currently have a Kroger Plus card, stop by the customer service desk at any Kroger to request one. By designating Mountain Park Elementary as your choice of organizations, a portion of your purchases will be allocated to our school. **Even if you enrolled last year, you must renew each year.**
- **Spirit Nights:** This year we will have 4 spirit nights each at Mellow Mushroom, Lucia's Italian Restaurant, Outback Steakhouse, Whataburger, and Ruth and Naomi. It is a fun way to socialize and support our school! Please check the calendar and plan to attend!

I'd like to thank you for your ongoing support. I'm looking forward to a wonderful 24-25 school year. See you at Open House on August 2nd!

Sincerely,

Ayo Richardson

Principal



Thank you to our generous business partners for their ongoing support:

Aurora Cineplex
Bill Hoban, Century 21 Realtor
Elite Skillz
Harmony Chiropractic
Hello Garage of Atlanta
Jared Davis, State Farm
Lucia's Italian Restaurant
Megan and Natalie Real Estate Team
Mighty Dog Roofing
Moxie Blossoms
Outback Steakhouse Roswell
SmartMED
The Summit Counseling Center
Terp Construction
Tolbert Yilmaz School of Dance



MPE's Mission Statement is Learn to Think! Think to Learn!

Our school community of students, teachers and parents agreed to this mission statement back in 2007. In the book *The World is Flat* by Thomas L. Friedman, the author suggests Learn to Think! Think to Learn! should be the mission of every school. We believe it accurately portrays our commitment to helping students become critical thinkers and problem-solvers.

SCHOOL GOVERNANCE COUNCIL

The School Governance Council (SGC) is a collaborative team of parents, school staff, and community members who work together to create, implement, and monitor progress on our school's strategic direction.

*Our plan addresses four key pillars:
Student Achievement, People and Culture,
Community Collaboration, and
Fiscal Responsibility.*

We work together to establish meaningful initiatives and desired outcomes that target growth, engagement, and community at our school. This past year, the SGC worked together to implement and monitor school safety initiatives in addition to our typical duties and responsibilities. We met the strategic and specific needs of MPES through the use of the SGC budget for schoolwide safety purchases and empowered teachers to acquire specific needs for their classrooms through the award of over \$10,000 in Teacher Grants. Over \$10,000 was dedicated to purchasing brand-new, high engagement books for our book vending machine.

We worked to increase engagement by encouraging staff and parent participation in our annual perception surveys. We will analyze those results this year, working to ensure MPE remains a place that staff and families would highly recommend to their families and friends.

For more information about our SGC, please visit the school website, click on the "Our School" tab, and then on the "School Governance Council" heading. There you will find our Semester Action Plan, a monitoring tool that we use to regularly check in on our progress, a schedule of meeting dates, and all of the meeting documents (agendas, minutes, summary of actions). You'll also see updates throughout the year from our meetings in the Mustang Flyer.

The School Governance Council meets monthly (typically at 8AM on Friday) and all are welcome at our meetings! We set aside time at some meetings for public comment from guests, and you can always observe the rest of the meeting. Your voice matters, and we are here to represent our entire school community, so we encourage you to join us, make your voice heard, and learn more about what the SGC does.

Thank you,

The School Governance Council

2024–2025 School Governance Council:



Sarah Linn, Teacher

Kendall Harlow, Teacher

Kristen Reittenbach, Curriculum Support Teacher

Tarnisha Ruben, Assistant Principal

Erica Lowman, Parent

Caulie Hamling, Parent

Janet Park, Parent

Eric Casey, Community Member

Corey Reed, Community Member/Parent

Ayo Richardson, Principal

Visitors are welcome to attend SGC meetings, virtual or held in Mrs. Richardson's office, to observe and provide input during the public comment opportunity at the beginning of the meeting (*prior to any votes being held*).

Agendas are posted to the MPE website mountainpark.fultonschools.org in advance of each meeting. Meeting dates are listed below.

A summary of action from each meeting is posted to our website within two school days of each meeting.

Minutes are posted after approval at the following meeting. The Council keeps everyone informed of SGC happenings through the posted minutes and the weekly Mustang Flyer.

The 2024–2025 Meeting Schedule

(subject to change)

August 30, 8AM

September 27, 8AM

October 25, 8AM

November 22, 8AM

December 20, 8AM

January 31, 8AM

February 28, 8AM

March 21, 8AM

April 25, 8AM

May 30, 8AM

The Schoolwide Enrichment Model (SEM) is a framework developed by renowned educational researchers at the University of Connecticut, Sally Reis & Joseph Renzulli. The framework helps schools develop a blueprint for providing systematic enrichment opportunities for all students, not just those in advanced or gifted classes. At MPE, our SEM framework includes hands-on science and social studies projects, designated grade-level field trips and science labs to support the state science standards. Schoolwide experiences like the Science Machine, cultural arts performances, and authors visits also fall into the SEM framework. SEM at MPE is only possible thanks to our incredible PTA! Your donations support the costs of nearly all SEM experiences. Our Science Lab offers the perfect opportunity for parents to come in and work with their children's classes. I am so grateful for your support!

Here are some highlights of what students get to do at each grade level:

KINDERGARTEN

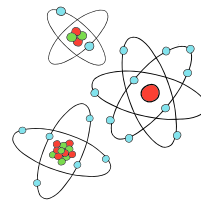
- Silly Story Ladies
- Build My Community
- Texture Walk
- Marigold Dissection
- Becoming a Scientist-Intro To Science Experiments
- Thanksgiving Friendship Feast
- Veteran's Day Celebration-interview with real veterans
- Party Animals On Site Field Trip
- Art Barn Field Trip
- Nutcracker Performance
- Nature Walk-Hike To Leita Thompson
- Rocks/Soil Science Lab
- Motion Science Lab
- Day/Night Science Lab

FIRST GRADE

- Habitats
- Rain Cloud In A Jar
- Solid, Liquid, Gas Root Beer Floats
- 3D Maps & Globes
- Thomas Jefferson Chick Fil A
- Meteorologist Visit
- Zoo Atlanta Field Trip
- Theater Field Trip
- Light & Shadow Science Lab
- Sound Science Lab
- Magnet Science Lab
- Plants Science Lab

SECOND GRADE

- Living Museum
- Market Day
- Life Cycles-Caterpillars
- Making Oobleck
- Chain Reaction Project (Rube Goldberg Inspired)
- Space Suits Creation
- Creating Sundials
- Funk Heritage Museum
- Tellus Museum
- Force/Motion Science Lab
- Matter Science Lab
- Changes To the Earth Science Lab



THIRD GRADE

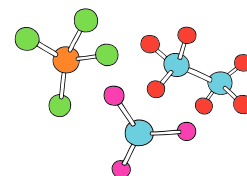
- Diamond Del Gem Mining
- Building Solar Ovens
- Native American Home Exploration
- Habitat Dioramas
- Pollution Solution Design Challenge
- Trashion Show
- Truist Park
- Chattahoochee Nature Center
- Fossils Science Lab
- Heat Science Lab
- Recycling Science Lab

FOURTH GRADE

- Pioneer Day
- Musical Instrument Project
- Civil War Museum
- American Revolution Project
- Build Terrariums
- Force & Motion Kickball
- Economics Project
- Atlanta History Museum
- Roller Rink STEM Field Trip
- Ecosystems Science Lab
- Solar Systems Science Lab
- Weather Instrument Science Lab

FIFTH GRADE

- Mustang Market
- Ellis Island Simulation
- Cell Shrinky Dink
- Building Lava Lamps
- Sparky's Light Kit
- Communism vs Capitalism Simulation
- Mercedes-Benz Stadium Field Trip
- Rock Eagle Field Trip
- Cells/Microscopes Science Lab
- Sandy Beaches Lab
- Rain Away Lab



MPE ADMINISTRATION SUPPORT STAFF

We are thrilled to introduce our dynamic and dedicated administrative team, ready to embark on an exciting journey alongside our students and parents. Each member brings a wealth of experience and passion to their roles, ensuring a nurturing and enriching learning environment for all. Get to know our leadership team and their primary areas of responsibility, so you'll know exactly "who to call when..."—fostering seamless communication and support throughout your child's educational journey. Let's welcome and celebrate the following esteemed individuals:



Tiffany Barnes,
K-2 Literacy Coach

barnest2@fultonschools.org

Mrs. Barnes works with our teachers in grades K-2 to support literacy instruction. She also works with K-2 students to support and enrich reading and writing skills.



Tarnisha Ruben,
3-5 Assistant Principal

rubent@fultonschools.org

Mrs. Ruben supports students and teachers in grades 3-5 and serves as our school testing coordinator.



Michelle Gantenbein,
K-2 Assistant Principal

gantenbeinm@fultonschools.org

Mrs. Gantenbein supports students and teachers in grades K-2.



Molly Petry,
Instructional Support Teacher (IST)

petry@fultonschools.org

Mrs. Petry supports our teachers who serve students with IEPs.



Kristen Reittenbach,
Curriculum Support Teacher (CST)

reittenbach@fultonschools.org

Mrs. Reittenbach supports the implementation of our curriculum. She will also handle student placement, SEM, and science lab.



Courtney Daniel,
School Counselor

danielc3@fultonschools.org

Mrs. Daniel supports students in K-5 in the area of social and emotional needs.



Ayo Richardson,
Principal

richardsona3@fultonschools.org

Leading with vision and guidance, ensuring excellence in education.



Alexandra Foster,
Admin Assistant

Mrs. Foster works to support all students with 504 plans as well as students receiving Tiered Interventions (Tier II & Tier III).

NEW MPE STAFF

Courtney Daniel, *School Counselor*

I am excited to be your new school counselor! I am currently in my 9th year as a school counselor. While I grew up around the corner from Roswell, I began my career in South Georgia as an elementary school counselor. I then spent six years working at the middle school level in the metro Atlanta area, before returning to the elementary school level two years ago. I graduated with my Bachelor's degree from the University of Georgia in Psychology and Early Childhood and I have my Masters and Ed.S. in School Counseling from Valdosta State University. When I am not at school, you can find me spending time with my husband, four-year-old son, and one-year-old daughter. I also enjoy playing tennis, going to the lake, and doing anything outdoors. I look forward to joining your team next year at Mountain Park and getting to know all of you!



Arilio Salinas, *Building Custodian*

My wife and I moved to Georgia in March 2024 from Venezuela. I have enjoyed working in the school during the summer and I am looking forward to meeting all of the students and teachers at Mountain Park.



Blake Lenane, *IRR*

I am excited to return to the classroom for my 13th year of teaching. I have taught elementary, middle, and high school throughout my career. I am looking forward to teaching in Fulton, and returning to 4th grade. When I'm not teaching, I enjoy spending time with my wife and our two dogs, Odin and Albus, and being physically active. Let's have a wonderful year!



Amanda Newton

This is my 19th year as an elementary teacher! I am so excited to come back to Fulton County after a break teaching in private schools in the area. I have my undergrad and masters degrees in education from Furman University. I love teaching, especially teaching them how to read and be a successful reader. When I am not teaching I am spending time with my husband and our two daughters (usually on the soccer field). We also added another puppy to our household this summer so we've been busy.



Talented And Gifted (TAG)

The Talented and Gifted (TAG) program in the Fulton County School System provides enriching learning experiences for the intellectually advanced and exceptionally creative student. Gifted services are available in all Fulton County schools for students in kindergarten through grade 12. The program meets all requirements of the Georgia Department of Education and provides diverse, high-quality opportunities for the student. All TAG teachers in Fulton County hold an endorsement in Gifted Education from the Professional Standards Commission. These specially-trained educators guide the gifted student in ways that maximize the child's unique learning characteristics, interests, personal needs, and capabilities.

The Fulton County School System screens students for eligibility for gifted services twice a year. For more information about the Screening and Referral Process, please explore the Fulton County website: <https://www.fultonschools.org/Page/5099>



We are fortunate this year to have Mary Stewart, Jessica Elgin, and Pamela King as the TAG Team.



STAY INFORMED

The Best Ways to Keep Up with the Latest at MPE

1. Read the weekly **Mustang Flyer** sent on Thursdays via email.
2. **Join the PTA.** Attend general meetings where you get a voice and a vote.
3. Purchase **calendar** from PTA.
4. Join us on **Facebook:** [Mountain Park Elementary Mustangs](#)
5. Follow us on **Twitter:** [@MPE_Mustangs](#)
5. Follow us on **Instagram:** [@MPEPTAroswellGA](#)
6. Visit the MPE School Website: mountainpark.fultonschools.org
7. Visit MPE PTA Website: mpepta.com
8. Attend Monthly **School Governance Council (SGC) Meetings.**
9. Attend Monthly **Community Board Meetings** (format TBD) with board member **Katha Stuart**. These dates will be added to the PTA calendar and advertised in the Mustang Flyer once announced.
10. Check your child's **Thursday folder.**
11. Check your 2nd–5th grade student's grades in **Campus Parent** (see page 4).

The MPE Marquee is a new addition to Mountain Park. Thanks to our generous PTA, we were able to update our old sign and join the digital age. You can have your student's birthday displayed on the marquee. Click the link [Digital Marquee Birthday](#) and submit your message today!



..... Interested in Being a Room Parent?

A great way to connect with MPE and get to know the teachers is by becoming a Room Parent. At Open House, parents will complete a form in the classrooms where there will be an option to volunteer as a room parent. There are three room parents for each classroom, and they are selected after the ten-day count. We ask that you only volunteer to be a room parent for one class to give others a chance to volunteer.

Room Parent Job Description:

- Develop and maintain the class roster
- Set up a Room email distribution to advise parents of the school and/or class activities
- Assist teachers in planning organized parties:
 - All grades: Winter Holiday & End of the Year Parties
 - Grades K-2 also have a Valentine's Day Party
- Collect items and/or funds needed for class
- Coordinate the class basket for the Holiday Extravaganza
- Teacher Appreciation:
 - Coordinate with parents for teacher gifts
 - Promote teacher appreciation activities
 - Organize volunteers to provide food for teacher appreciation events

For more information, contact the Room Parent Coordinators:

Nicole Irvin Nicole.santelli@gmail.com or

Ashley Macken ashleymacken14@gmail.com



SATURDAY, DECEMBER 7, 2024

10AM-1PM (2PM Raffle Drawings)

The Holiday Extravaganza is our **BIGGEST** school fundraiser hosted by the PTA. We need **YOUR** support to meet our **goal of \$35,000** that supports field trips, cultural arts, and other PTA expenses.

The event will be held on December 7th from 10AM-1PM at MPE. This schoolwide event is fun for friends and the whole family! Enjoy the Sweet Shoppe, hot chocolate bar, bounce house, face painting, and a chance to win **BIG** in our Gift Basket Raffle.

The Holiday Extravaganza is going to be better than ever this year with your participation! Let's come together as **ONE MPE family** to show our **COMMUNITY SPIRIT & MUSTANG HEART**.

HOW CAN YOU HELP?

- 1) **ATTEND** the Holiday Extravaganza on December 7th from 10AM-1PM.
- 2) **VOLUNTEER** for one of the event committees – email mpepta@gmail.com to sign up.
 - a. Sweet Shoppe
 - b. Gift Basket Raffle
 - c. Entertainment
- 3) **DONATE:** Contribute to your class raffle basket, purchase tickets

A Message from Your PTA

Welcome back MPE Families!

We are thrilled to introduce ourselves as the new Co-Presidents for the 2024–2025 school year. My name is Katie Jones and I am the parent of Charlotte in 5th grade and Cooper in 2nd grade. My partner, Tasha Barton, has James in 7th grade, Sears in 5th grade, and Jackson and Rivers both in 3rd grade. We are both excited to work together and with our incredible MPE Administration, teachers, and parents to create a vibrant and supportive school community for our children.

The PTA plays a vital role in enriching the education experience at MPE. We organize events, fundraise for important resources, and provide a platform for parents and teachers to collaborate. We believe in fostering a strong sense of community where everyone feels welcomed and valued. In the coming weeks, you will hear more about exciting plans for the new school year, including our new website to easily access information, multiple cultural experiences for the entire school, added science labs for each grade, and more! Look out for more information about upcoming PTA meetings, volunteer opportunities, and ways to get involved.

In the meantime, please feel free to reach out to us at mpepta@gmail.com if you have any questions or suggestions. We are here to listen and collaborate with you to make this a fantastic year for our students, teachers, and families.

Peace, Love, Mustangs

We encourage an open line of communication with parents. Please reach out anytime to mpepta@gmail.com and we are happy to answer your questions, keep “you informed & help you to stay involved.”

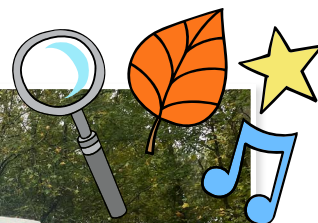


Katie Jones

2023–2025 Co-President

Tasha Barton

2024–2026 Co-President



ONLINE SCHOOL DIRECTORY

Join the PTA and get FREE online access to the school directory at:

membershiptoolkit.com

Download the app to your phone, print hard copies, or save in your address book. It's easy!

..... 2024 PTA MEMBERSHIP DRIVE

Join MPE PTA with [ONE CLICK](#) BEFORE Wednesday, August 2nd and expedite your Open House Experience! Families who join in advance can pick up their membership packets from the table at Open House and proceed. We appreciate your support!

Where does the money from my PTA Membership go?

Part of your donation goes toward the Schoolwide Enrichment Model (SEM)—see pages 10–11.

The rest of your contribution provides:

- Cultural arts experiences for all students
- Science Expo
- Media Center materials
- Art and music supplies
- Additional PPE and Clinic supplies
- Fall Family Fun Night
- Supports the MPE Drama Club
- The 5th grade Youth Day Float
- Classroom materials
- Facility enhancements
- Staff Appreciation events
- Student garden materials and much more!



Which PTA Membership is right for my family?

Please refer to the chart below to choose what membership level is best for your family. This amount is based on the \$40 minimum spent per student for SEM. You do not have to volunteer throughout the school year to join the PTA. Monetary donations are just as helpful!

[CLICK HERE TO JOIN PTA TODAY](#)

MEMBERSHIP LEVELS	MEMBERSHIP BENEFITS		AMOUNT
Platinum Mustang	<ul style="list-style-type: none">• PTA Online Parent Directory• 1 MPE Calendar• \$25 Spirit Wear Voucher• 30 Holiday Extravaganza Tickets	<ul style="list-style-type: none">• 2 Reserved Seats for a Class Performance• 2 Tickets to Spring Fling• 2 Tickets to the School Play• \$150 SEM Contribution	\$350
Gold Mustang	<ul style="list-style-type: none">• PTA Online Parent Directory• 1 MPE Calendar• \$15 Spirit Wear Voucher	<ul style="list-style-type: none">• 20 Holiday Extravaganza Tickets• 2 Tickets to Spring Fling• \$100 SEM Contribution	\$175
Silver Mustang	<ul style="list-style-type: none">• PTA Online Parent Directory• 1 MPE Calendar• \$10 Spirit Wear Voucher	<ul style="list-style-type: none">• 10 Holiday Extravaganza Tickets• \$75 SEM Contribution	\$100
Bronze Mustang	<ul style="list-style-type: none">• PTA Online Parent Directory	<ul style="list-style-type: none">• \$50 SEM Contribution	\$75
Mustang	<ul style="list-style-type: none">• PTA Online Parent Directory		\$25

MORE QUESTIONS?

Contact the PTA VP of Membership,
Bridget Worrell, at mpemembership1973@gmail.com

Doors open at 7:10AM and the bell rings at 7:40AM. Dismissal begins at 2:20PM.

DISMISSAL PROCESS

Again this year, MPE will be using a system called [PickUp Patrol](#) to help track dismissals. PickUp Patrol (PUP) will save the office time, reduce classroom interruptions, and provide you with an easy way to change your children's dismissal plans.

Use the PickUp Patrol app to submit changes to your child's default (regular) dismissal plan.

For example:

- Your child normally rides the bus, but is going carpool today.
- Your child is staying after for an activity.

How it works

Your child's regular dismissal plan is entered into the system. This is called their Default Plan. Whenever you have a change to the Default Plan, a daily change, or after-school activity, you'll submit it through the PickUp Patrol app. When the change is submitted, the school is notified, and your child's teacher will relay the change to them.

New families getting started

1. REGISTER

After July 31st and before Open House, you will receive a registration email with a link to set up your account.

- The web app is free to parents and you can use it from your smartphone or computer.
- Follow the instructions for how to add it to your phone's home screen (PUP is not accessed through the app stores).

2. ENTER DEFAULT PLANS

Once you register, log in to your PickUp Patrol account before Open House, August 2nd, to enter your child's default dismissal plan. **It's important that you complete this step so that we can accurately dismiss your children.**

Returning families

1. LOG IN

Log in to your existing PickUp Patrol account. Confirm your child's default plan for this year. Be sure to double-check bus information as numbers and colors change from year to year.

We do not accept notes or phone calls for dismissal changes. All changes should be submitted through PickUp Patrol.

***Changes will be cut off everyday at 1:00PM through PickUp Patrol.
Only in an emergency will phone calls be allowed after that time.**

Any questions, email Shannon Anderson andersons5@fultonschools.org



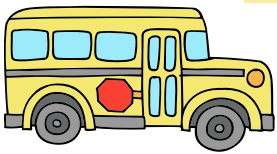
TRANSPORTATION: BUSES

We recommend students ride the bus daily (bus riders are never counted tardy!). Take advantage of **Here Comes the Bus**: an easy-to-use website and mobile app that enables parents and caregivers to view the real-time location of their child's bus on a computer, tablet, or smart phone. Additionally, email alerts and push notifications help parents send their students to the bus stop at just the right time.

To start using Here Comes the Bus:



1. Download the app or visit herecomesthebus.com
 2. Click "Log In" in the top right corner.
 3. New users, click "Sign Up Today!"
 4. Enter the school district code: **87428** and click "Next" then "Confirm."
 5. Complete your "User Profile" and click "Add" under "My Students."
 6. Enter your child's last name and student ID number (lunch number).
- New families get the ID at Open House. Returning students' information will roll over.



BUS NUMBERS & COLORS

Beginning July 31st

When you log in to

<https://edulogweb.fultonschools.org/livewq/webquery>

- You will enter your address and grade level
- Click Mountain Park ES
- Note your bus stops, times, and bus number

Here are the corresponding bus colors:

(Subject to change. Updates will be sent as soon as possible.)



Bus 4530
Pink Pig



Bus 4516
Black Panda



Bus 4907
Orange Tiger



Bus 4428
Yellow Duck



Bus 4623
Red Elephant



Bus 1700
Gray Shark



Bus 4689
Brown Owl



Bus 4530
Light Blue Dog



Bus 4738
Blue Whale



Bus 4247
White Polar Bear



Bus 1501
Neon Orange Starfish



Bus 4906
Green Frog



Bus 1502
Neon Yellow Penguin



Bus 4535
Purple Dino

TRANSPORTATION FAQs

Q: What if I need to check-out my child early?

A: Please arrive at the front office PRIOR to 2:00PM and be prepared to show a photo ID. Do not park in the bus lane (the lane in front of the school) or the lower parking lot after 2:00PM or you will likely be stuck there until after dismissal.

Q: How does morning carpool work?

A: Students may be dropped off after 7:10AM at the side door, near the 4th and 5th grade wing of the building. Adults are on hand to greet and assist students. Cars MERGE as you near the front of the line. If it is after 7:40AM, you must pull around; you must park and walk your child into the front office.

Q: What is the procedure for arrival if we park in the parking lot in the morning?

A: In the mornings, please make sure to pull into an actual spot in the parking lot and walk your child to the front of the school. If you do not want to get out of your car, please go through carpool. With buses and cars arriving at the front, and many dark mornings, this helps us ensure student safety.

Q: What about afternoon carpool?

A: Students are dismissed out of the carpool door beginning at approximately 2:20PM. Cars MERGE at the entrance to the carpool loop to form a line and wait for students. Staff will call your child to one of the cones when you arrive near the front of the line.

Q: What if my child needs to go home a different way?

A: Use the PickUp Patrol app to make changes to your child's normal transportation. Handwritten notes will not be accepted.

MPE STUDENT SAFETY

Student safety is our first priority at MPE. We have an extensive safety plan that includes procedures for a variety of emergency responses. Many of our staff are CPR/AED certified and have participated in trainings such as *Stop the Bleed* so they feel empowered to assist in medical emergencies. Within our building we have over 20 *Stop the Bleed* kits and 3 defibrillators. Each room in the building is equipped with an emergency backpack that has essential first aid items inside. In the event of an actual emergency situation, you will receive notifications via Blackboard Messenger from Mountain Park and/or Fulton County.

EMERGENCY DRILLS

We implement Safety Drills monthly at MPE. The frequency in which we practice each drill is determined by the district's monthly drill schedule. This provides the opportunity for our staff and students to practice the emergency response procedures for a variety of emergency drills (intruder, medical, soft lockdown, hard lockdown, evacuate, and shelter in place). Teachers discuss each of these drills with their students and prepare them for practice. Assigned personnel assist in monitoring these drills to ensure we are being as effective as possible with each drill. You can read more about each type of drill here: <https://www.fultonschools.org/Page/25743>

VISITORS, VOLUNTEERS, AND ENTRY TO THE BUILDING

MPE has one full-time front office secretary and a part-time front office secretary. The front office staff is there to greet you and help assist with student check-ins, check-outs, volunteer and visitor check-in as well as item drop-off. Exterior doors remain locked during the school day. The side door for carpool is opened at 7:10AM and locked at 7:40AM each morning. If you arrive to school after 7:40AM, please park in the parking lot and walk your child into the building. You will use our Check Mate Kiosk to check your student in. Our front door has a buzzer/locking system where visitors are buzzed into the building. There is a button to the right of the doors to push to gain access to the school. Please be prepared to answer when asked "How can I help you?" and have your ID ready. No one can gain access to the building without a valid ID. The system no longer stores the information so you must bring it each time you come to school. Volunteers need to register with Fulton County Schools at <https://www.fultonschools.org/volunteer>



MPE'S ANNUAL FAMILY PHOTO FUNDRAISER!

Sept 22 • Sept 29 • Oct 27 • Nov 10

This is the perfect time to get your family portrait taken in time for holiday cards and in beautiful fall weather. Maura Roberts Photography will be taking family portraits and all photos will be taken outdoors.

Sign-ups for this popular fundraiser will take place online. Be on the lookout for a link to sign up in the Mustang Flyer, after Labor Day.

For more information, email: cauliehamling@gmail.com

Obviously, we hope to never use our emergency procedures. However, we do have them in place, and we practice the drills so we are well prepared in the event of an actual emergency. You will receive notices via Blackboard Messenger from Mountain Park and/or Fulton County in the event of any emergency situation. You can also follow Fulton County Schools on Twitter by following the handle [@FultonCoSchools](https://twitter.com/FultonCoSchools).

Thank you for helping us to be safe at school!



YEARBOOK: GET THOSE CAMERAS READY!

Photos are collected for the MPE yearbook throughout the year so watch for notifications of when and where to send your photos. Individual photos taken on Fall Picture Day are used in the yearbook, so don't miss picture day!

We are looking for a representative for kindergarten through 4th grade, specials, and events. If you would like to volunteer for the Yearbook Committee, please contact the editor, Kristie Zachry at ZachryK@fultonschools.org.



CLUBS! GET INVOLVED!

Whether you're an artist using paint, your voice, or your feet, MPE has lots of clubs and activities for your interests:

WMPE

Attention all Rising 5th Graders! Do you want to be a member of the WMPE News Crew? Application information is available on the Media Center's website under tab #8. <http://mpemc.weebly.com>

There are 2 jobs on the news crew: anchor and behind-the-scenes. The anchor will be responsible for delivering the news on camera. The behind-the-scenes role is responsible for advancing the teleprompter, collecting the lost and found items each day, and choosing our daily school clock design. All students who join the news crew must be able to arrive at school by 7:10AM the morning of their assigned duty. The deadline to apply is August 23rd.

Any students also assigned to Safety Patrol at the same time as their news crew duties will perform afternoon Safety Patrol duties only.

If you have any questions, please contact Vicky Jaksic, Media Specialist, at jaksicv@fultonschools.org.

The Drama Club

There is something for everyone on stage and behind the scenes. In 2024, students shone on stage during *Willy Wonka & the Chocolate Factory Jr.* We can't wait to see our students show off their talents this year in *Newsies Jr.*!

Student Council

This club consists of elected 4th and 5th grade representatives who meet and solve school challenges.

The Safety Patrol

This is an opportunity for 5th graders to serve as leaders throughout the school during arrival and dismissal time. The students work to help younger students during arrival and dismissal as well as help keep our hallways, carpool, and bus area safe.

In addition to our school sponsored clubs, check out other after-school clubs from outside vendors offered at MPE. Information tables will be in the gym at Open House, and flyers emailed via PeachJar.



Willy Wonka and the Chocolate Factory Jr. Cast

The MPE Drama Club Presents



Mark Your Calendars!

SIGN-UP DEADLINE:

Friday, August 30th

AUDITION DATES:

Tues, Sept 17 - 5th Grade
Wed, Sept 18 - 2nd & 3rd Grades
Thurs, Sept 19 - 4th Grade

CALLBACKS:

Wednesday, September 25

SHOWDATES:

Thurs, Feb 27 @ 5:30pm
Fri, Feb 28 @ 6pm
Sat, Mar 1 @ 2pm & 6pm

SCAN QR
CODE TO
AUDITION



Interested in volunteering to help with the show?
Contact us at mountainparkdramaclub@gmail.com



RIGHT AT
SCHOOL

AFTER SCHOOL PROGRAM

2:20PM-6:30PM

1-5 DAYS A WEEK

<https://www.rightatschool.com/school/?-school=mountain-park-elementary&district=ga-fulton&tab=2024-25-after-school>

Accepting Imperfection



It's once again time to show off your creative talents for the 2024–2025 PTA Reflections Art contest. This year's theme is *"Accepting Imperfection."*

This is a nationally acclaimed student recognition program to encourage artistic creativity in the classroom and at home. The program engages nearly 300,000 students and their families in arts education activities each year by encouraging students to explore the arts for fun and recognition.

**Students may choose from one or more
of the available arts categories:**

Dance Choreography, Film production, Literature,
Music Composition, Photography, Visual Arts

**Students of all grades and all abilities are
encouraged to participate.**

Submission rules and deadlines will be communicated soon. Contact our PTA Reflections Chair for more information at mpeptareflections@gmail.com

SQUARE 1 ART
IT STARTS WITH THE ART!

Square 1 takes your child's artwork and makes it into great products for you to purchase. These products are wonderful keepsakes and gifts for family and friends. Celebrate your child's artistic achievement and support our school at the same time! Artwork is created in art class. Artwork can be ordered on coffee mugs, aprons, t-shirts, stickers, magnets, tote bags, notebooks and more. Order forms will be sent out in the fall and expect product delivery before winter break. Great items for holiday gifts!

For more information contact Rebecca Meredith at rebecca@rebeccameredithrealestate.com

Join the Girl Scout Adventure!



**Sign your daughter up for a year of
outdoors, adventures, and friends.**

We are looking for parents to lead and girls to have fun in the newly forming Mountain Park Elementary Girl Scout troops. All girls of all abilities, kindergarten through 5th, are welcome! Girls will experience goal setting, STEM and character building in fun and creative ways.

Girl Scouts is an all-volunteer organization, so any new kindergarten troops will need new leaders. Being a leader is easier than you think with free training and support. It's a great way to meet new people and shape your daughter's extracurricular activities.

For more information contact
Sarah Buehrle at
sbuehrle@hotmail.com



Discover Cub Scouts:

Cub Scouts is a place where boys and girls can have fun in the outdoors, learn new skills, make new friends, and begin a journey that will transform them into leaders for tomorrow.

Pack 135 conducts regular monthly Den and Pack meetings, service projects, community involvement, local field trips for various activities, the traditional Pinewood Derby, Rocket Day launch, and weekend camping trips in the North Georgia mountains with emphasis on character development and [Cub Scouting values](#) (citizenship, character, personal fitness, and leadership). Scouting can be something that you and your son or daughter will remember for the rest of their life! Pack 135 is family oriented with siblings, parents, and friends of the Scout encouraged to participate in all Scouting activities as well.

A meeting to provide information to those interested in Cub Scouts will be held shortly after school starts. Be on the lookout for details soon. The meeting is for parents of kids currently in kindergarten through 5th grade who are interested in Cub Scouts for the 2024–2025 school year.

Be sure to stop by our table at the MPE Open House on August 2nd for more information. In the meantime, if you would like to learn more, please visit the Georgia Council website: <https://www.gacacouncil.org/join>

Contact Andriy Khomenko at geolog@gmail.com

2024-2025 School Calendar (Revised 12/14/23)

JULY 2024						
S	M	T	W	Th	F	S
	1	2	3	4	5	6
7	8	9	10	11	12	13
14	15	16	17	18	19	20
21	22	23	24	25	26	27
28	29	30	31			

4 Independence Day
29 Pre-Planning
30-31 Professional Development Day

Instructional Days – 0
Staff Days - 3

1-3 Winter Break
6 Teacher Workday
7 First Day of Second Semester
20 M.L. King Jr. Holiday

Instructional Days – 18
Staff Days - 19

JANUARY 2025						
S	M	T	W	Th	F	S
			1	2	3	4
5	6	7	8	9	10	11
12	13	14	15	16	17	18
19	20	21	22	23	24	25
26	27	28	29	30	31	

AUGUST 2024						
S	M	T	W	Th	F	S
				1	2	3
4	5	6	7	8	9	10
11	12	13	14	15	16	17
18	19	20	21	22	23	24
25	26	27	28	29	30	31

1-2 Pre-Planning
5 First Day of School

Instructional Days – 20
Staff Days - 22

17 Presidents' Day
18 Professional Development Day

Instructional Days – 18
Staff Days - 19

FEBRUARY 2025						
S	M	T	W	Th	F	S
						1
2	3	4	5	6	7	8
9	10	11	12	13	14	15
16	17	18	19	20	21	22
23	24	25	26	27	28	

SEPTEMBER 2024						
S	M	T	W	Th	F	S
1	2	3	4	5	6	7
8	9	10	11	12	13	14
15	16	17	18	19	20	21
22	23	24	25	26	27	28
29	30					

2 Labor Day
3 Teacher Workday
4 Professional Development Day

Instructional Days – 18
Staff Days - 20

3 Teacher Workday
4 Professional Development Day

Instructional Days – 19
Staff Days - 21

MARCH 2025						
S	M	T	W	Th	F	S
						1
2	3	4	5	6	7	8
9	10	11	12	13	14	15
16	17	18	19	20	21	22
23	24	25	26	27	28	29
30	31					

OCTOBER 2024						
S	M	T	W	Th	F	S
		1	2	3	4	5
6	7	8	9	10	11	12
13	14	15	16	17	18	19
20	21	22	23	24	25	26
27	28	29	30	31		

14-15 Fall Break
16 Professional Development Day

Instructional Days – 20
Staff Days - 21

7-11 Spring Break

Instructional Days – 17
Staff Days - 17

APRIL 2025						
S	M	T	W	Th	F	S
		1	2	3	4	5
6	7	8	9	10	11	12
13	14	15	16	17	18	19
20	21	22	23	24	25	26
27	28	29	30			

NOVEMBER 2024						
S	M	T	W	Th	F	S
					1	2
3	4	5	6	7	8	9
10	11	12	13	14	15	16
17	18	19	20	21	22	23
24	25	26	27	28	29	30

5 Teacher Workday/Election
25-29 Thanksgiving Holidays

Instructional Days – 15
Staff Days - 16

22 Last Day of School
23 Post Planning
26 Memorial Day

Instructional Days – 16
Staff Days - 17

MAY 2025						
S	M	T	W	Th	F	S
				1	2	3
4	5	6	7	8	9	10
11	12	13	14	15	16	17
18	19	20	21	22	23	24
25	26	27	28	29	30	31

DECEMBER 2024						
S	M	T	W	Th	F	S
1	2	3	4	5	6	7
8	9	10	11	12	13	14
15	16	17	18	19	20	21
22	23	24	25	26	27	28
29	30	31				

20 Last Day of First Semester
23-31 Winter Break

Instructional Days – 15
Staff Days - 15

- Preplanning/Post-Planning/Teacher Workday (no students)
- First/Last Day of Semester
- Professional Development Day (students off)
- Break (schools closed for staff and students)

The proposed 2024-2025 School Calendar includes a total of 176 instructional days for students: 88 days for First Semester and 88 days for Second Semester.

Please note: Due to unforeseen circumstances including weather, the Board of Education may deem it necessary to adjust this calendar.