

ELEMENTARY SCHOOL ENROLLMENT

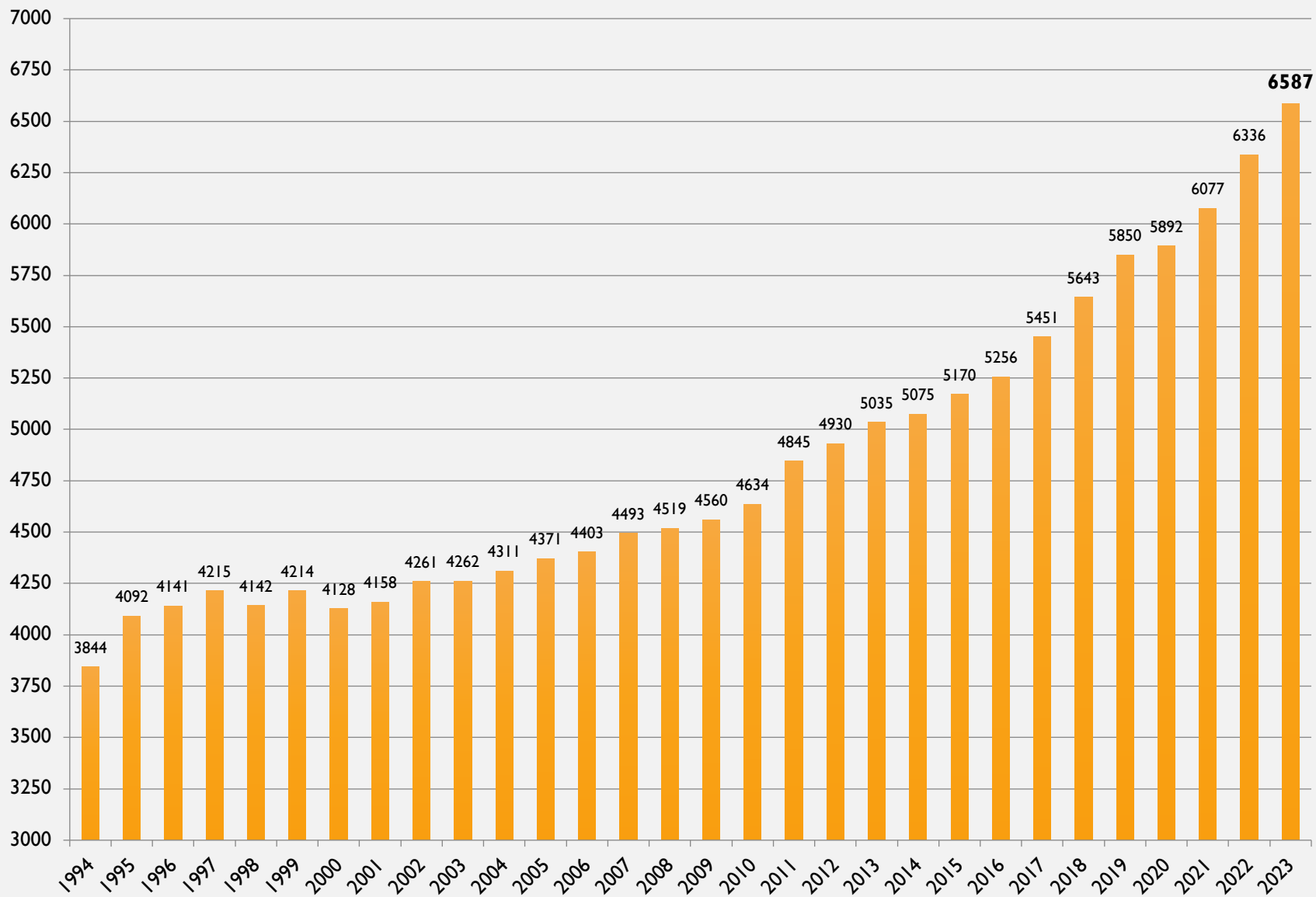
PUBLIC MEETING

NOVEMBER 15, 2023

ELEMENTARY ENROLLMENT AREAS DECISION TIMELINE

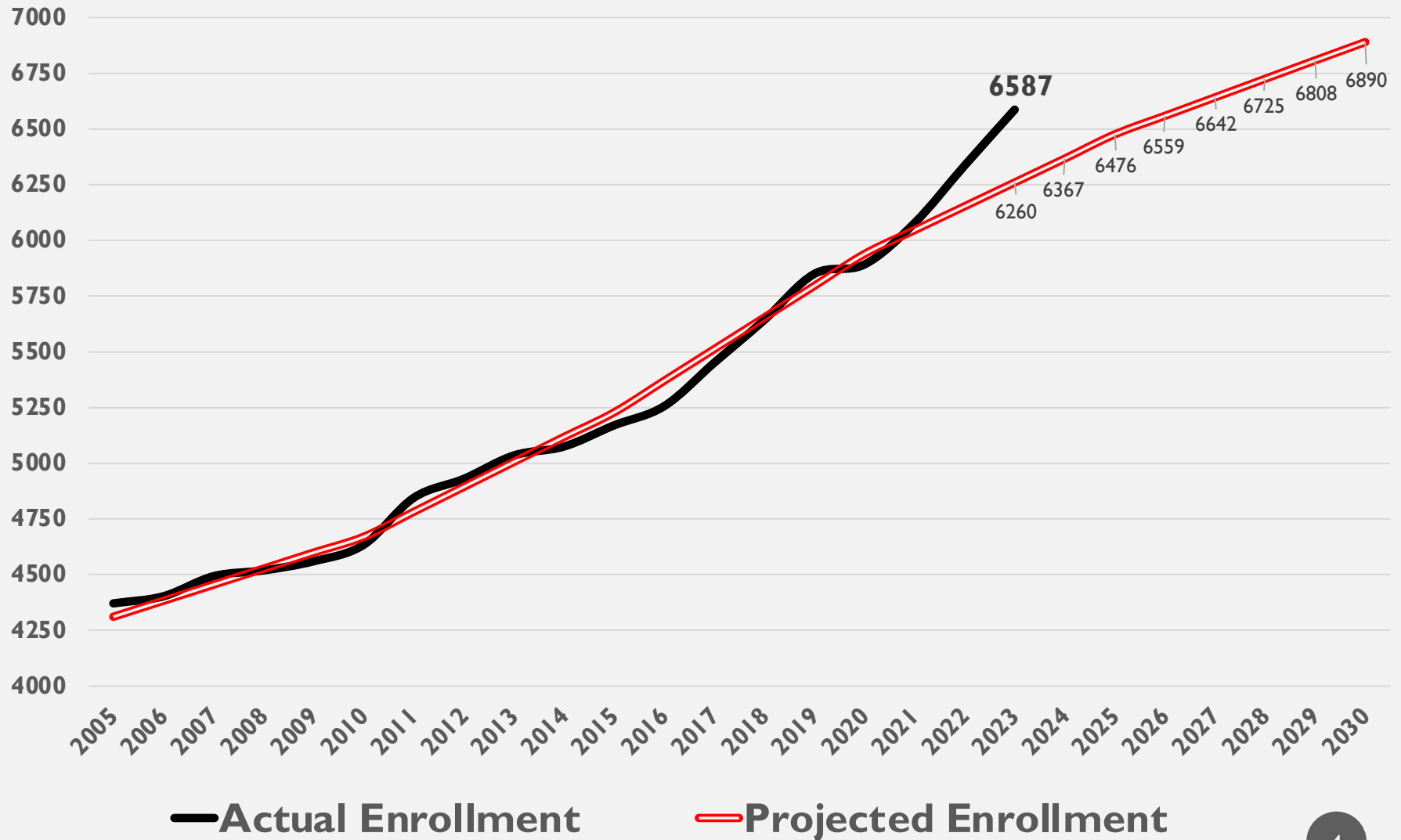
- September 28 - Presentation to Board of Education
- October 1st- 20th - Planning for Community/Parent Meeting
- October 23 – Community/Parent Meeting
- October 26 - Presentation to Board of Education
 - Presentation/Discussion
- October 27th – November 1st - Planning for Community/Parent Meeting
- November 15th – Community/Parent Meeting
- November 16 – Presentation to Board of Education
 - Update BOE and Provide Summary of November 15 Parent/Community Meeting
 - Presentation/Discussion – **No Action Taken On Agenda Item**
- December 8 – Recommended Elementary Areas for 2024-2025
 - Shared on Website the week prior to December 14 BOE meeting
- December 14 – Presentation to Board of Education
 - **Recommendation made by Superintendent – Action taken by BOE**

INCREASING ENROLLMENT



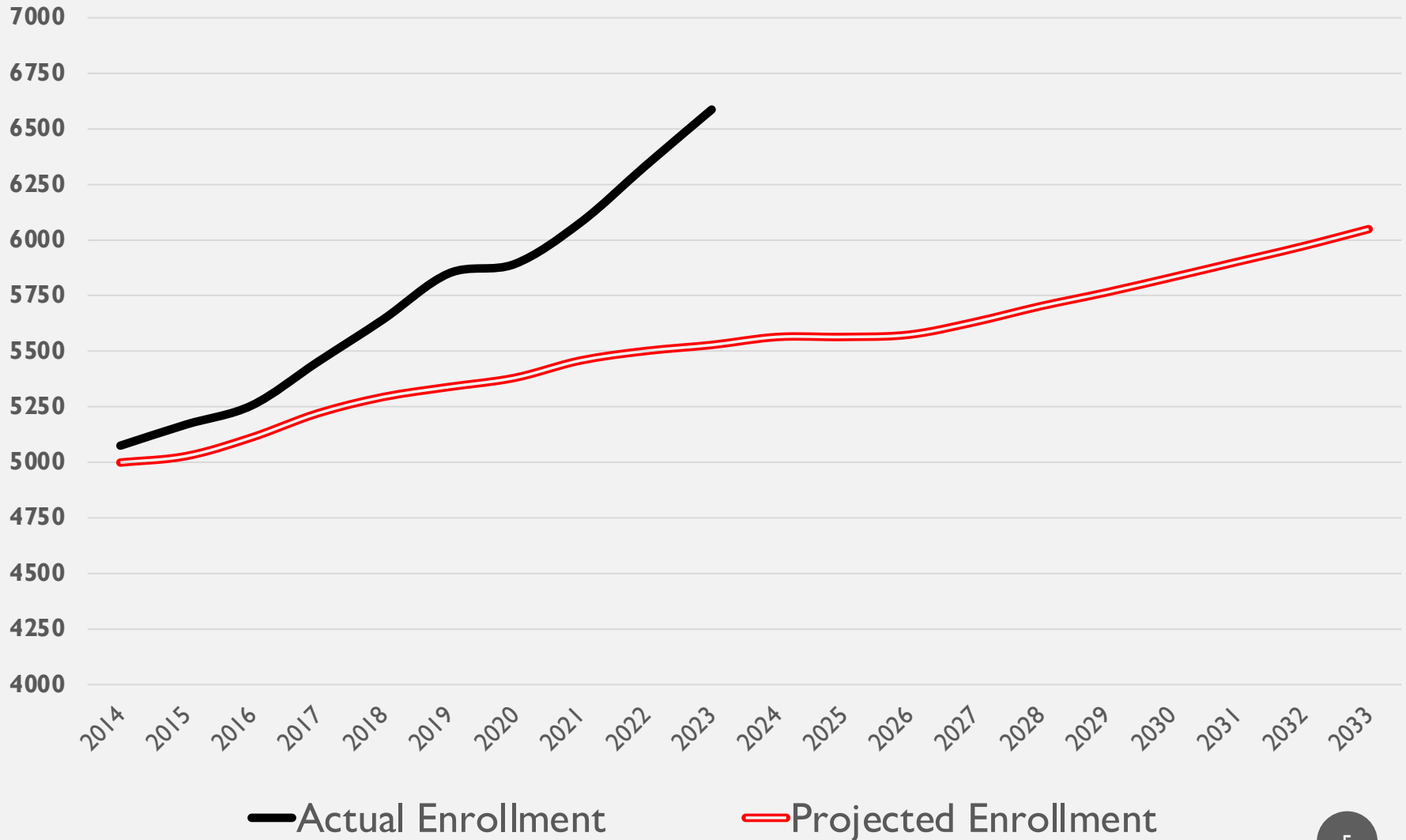
ACTUAL V PROJECTED ENROLLMENT

UD 2004 ENROLLMENT STUDY



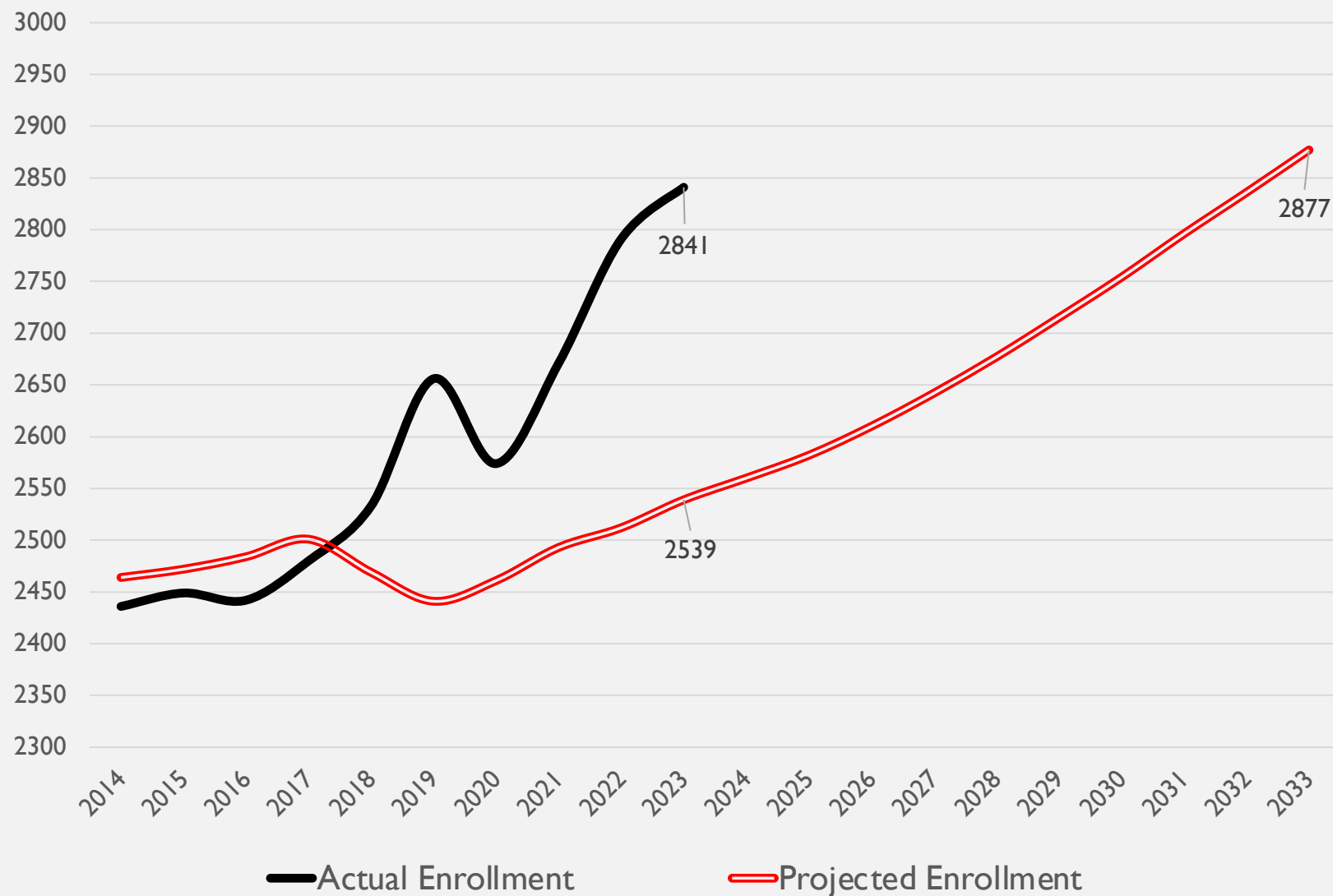
ACTUAL V PROJECTED ENROLLMENT

UD 2013 ENROLLMENT STUDY

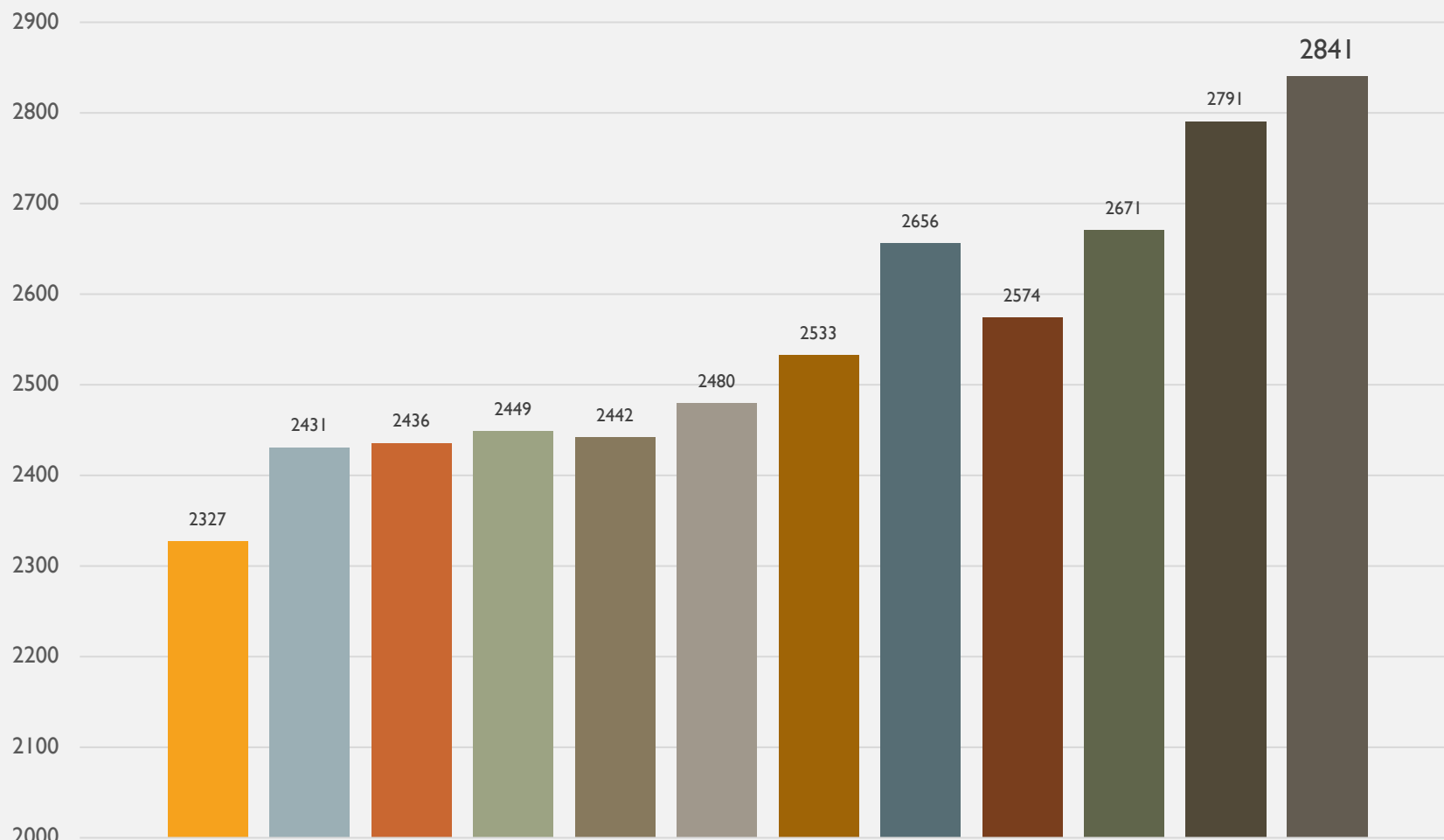


ACTUAL V PROJECTED – ELEMENTARY ENROLLMENT

UD 2013 ENROLLMENT STUDY



ELEMENTARY ENROLLMENT 2023-2024

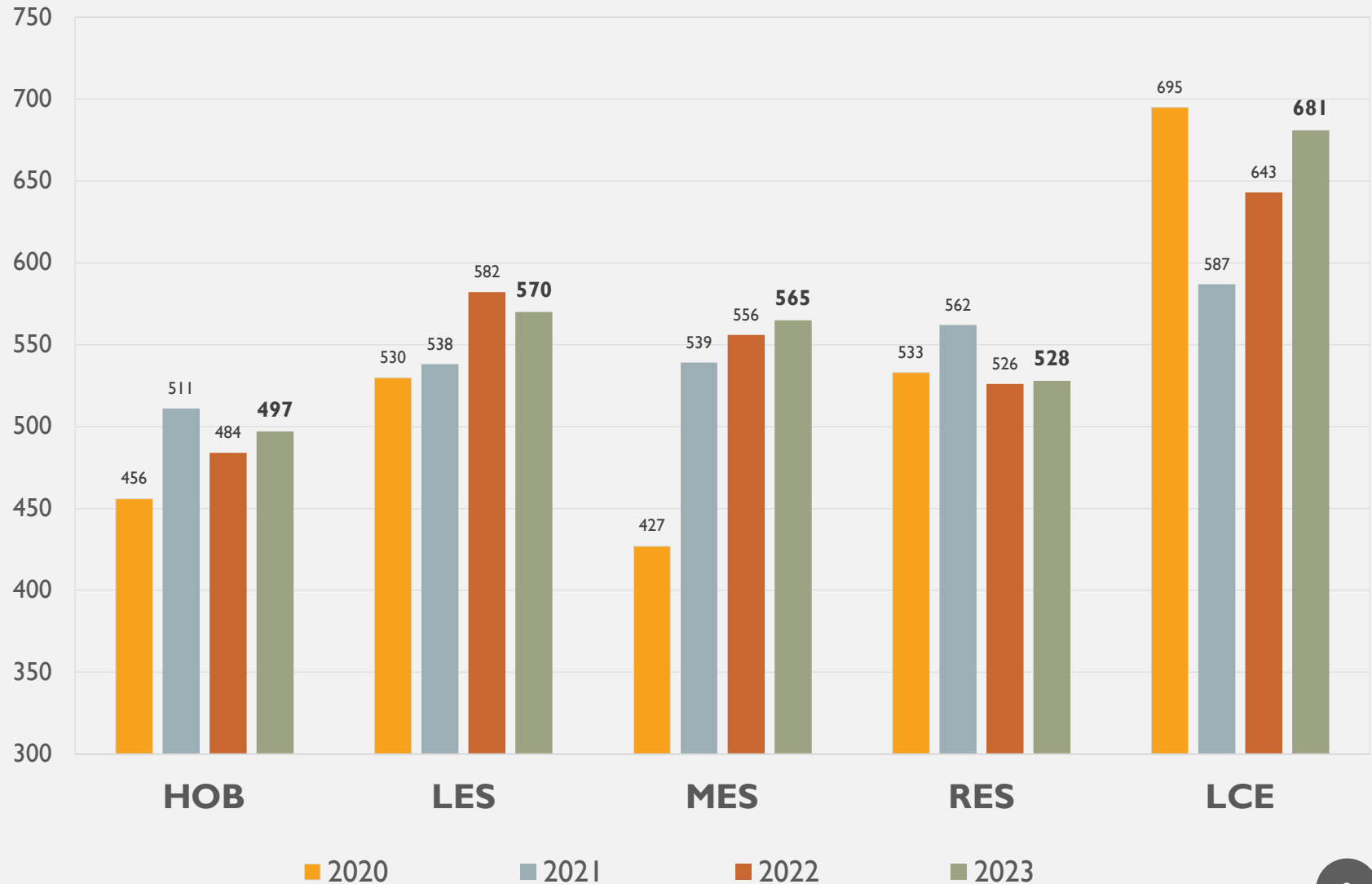


2012 2013 2014 2015 2016 2017 2018 2019 2020 2021 2022 2023

HISTORY OF ENROLLMENT AREAS

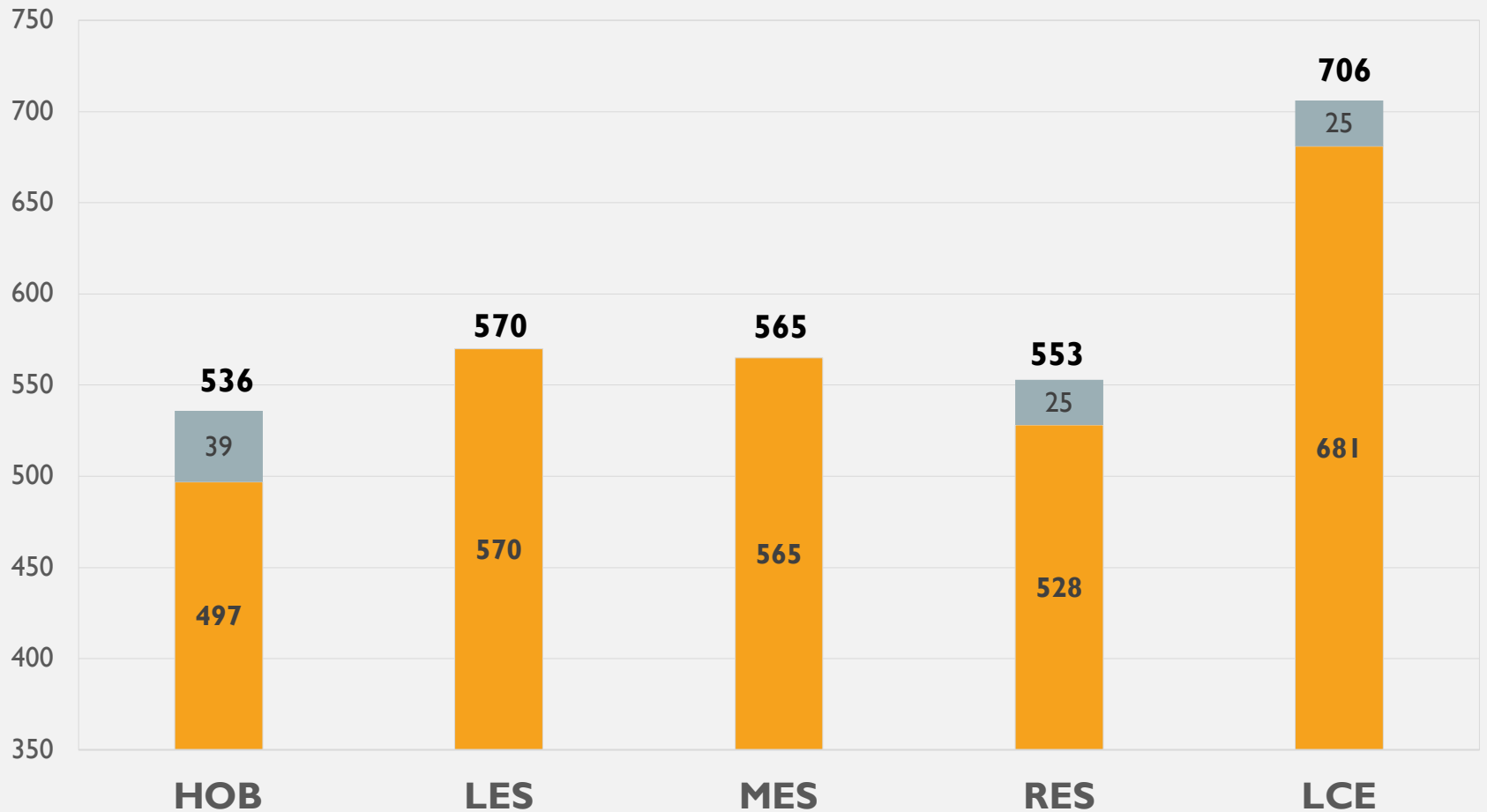
- 2017-2018 School Year - 5 Elementary Schools
 - Planning in Fall of 2016 for Fall 2017 Implementation
- 2019-2020 School Year – No Change
 - Discussions in Fall of 2018 for Fall 2019 Implementation
- 2021-2022 School Year
 - Discussions in Fall of 2020 for Fall 2021 Implementation
- 2023-2024 School Year
 - Discussions in Fall of 2023 for Fall 2024 Implementation

ELEMENTARY ENROLLMENT TRENDS (2020-2023)



ELEMENTARY ENROLLMENT 2023-2024

INCLUDING SUSSEX CONSORTIUM STUDENTS



ELEMENTARY ENROLLMENT

POSSIBLE CHANGES FOR 2024-2025

	HOB	MES	LES	LCE	RES
2023/2024	536	565	570	706	553
	+40	+40	+30	-150	+40
2024-2025	576	605	600	556	593

ENROLLMENT AREA CONSIDERATIONS

- #'s of Students in Each School
- Projected Growth for Each Enrollment Area
- Not Splitting Developments
- Distance/Time to Schools
- SES of Students in Each of our Schools
- Special Programs
 - Cape Accelerated Program
 - Spanish Immersion

DECREASE ENROLLMENT

LOVE CREEK ELEMENTARY SCHOOL

ORDER OF PRIORITIES

1. Students Residing Within the Current Attendance Boundaries of Love Creek Elementary
2. School Choice Students Currently Attending Love Creek Elementary School
3. Changing Attendance Boundaries to decrease the number of Students attending Love Creek Elementary School

LOVE CREEK ELEMENTARY
SCHOOL CHOICE
2023-2024

LOVE CREEK ELEMENTARY

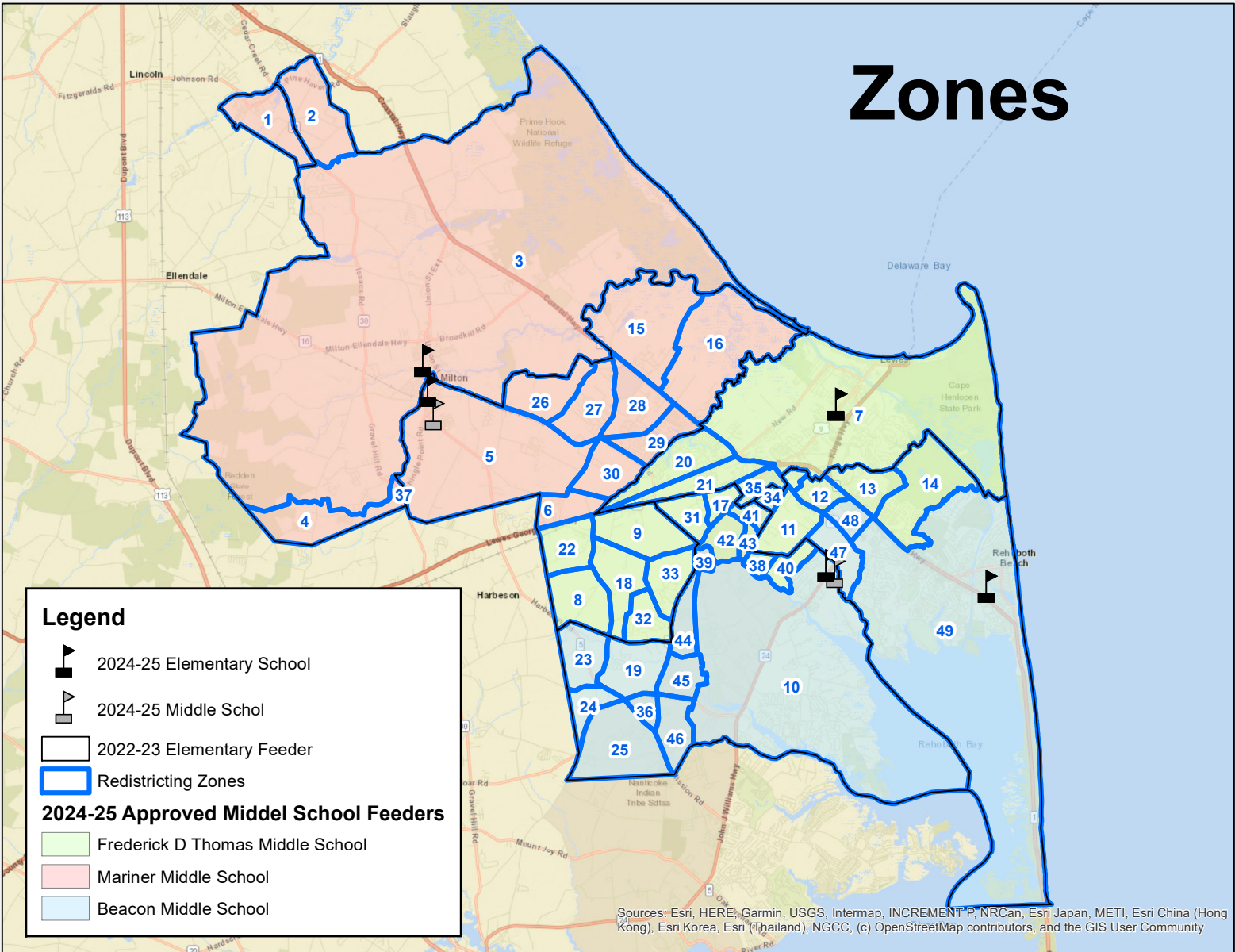
SCHOOL CHOICE

2023-2024

	Out - Staff	In - Staff	Out - Non - Staff	In – Non - Staff	TOTAL
K	0	1	1	0	2
I	4	7	2	2	15
2	1	5	5	4	15
3	5	4	5	2	16
4	7	4	4	0	15
TOTAL	17	21	17	8	63
	38		25		
	63				

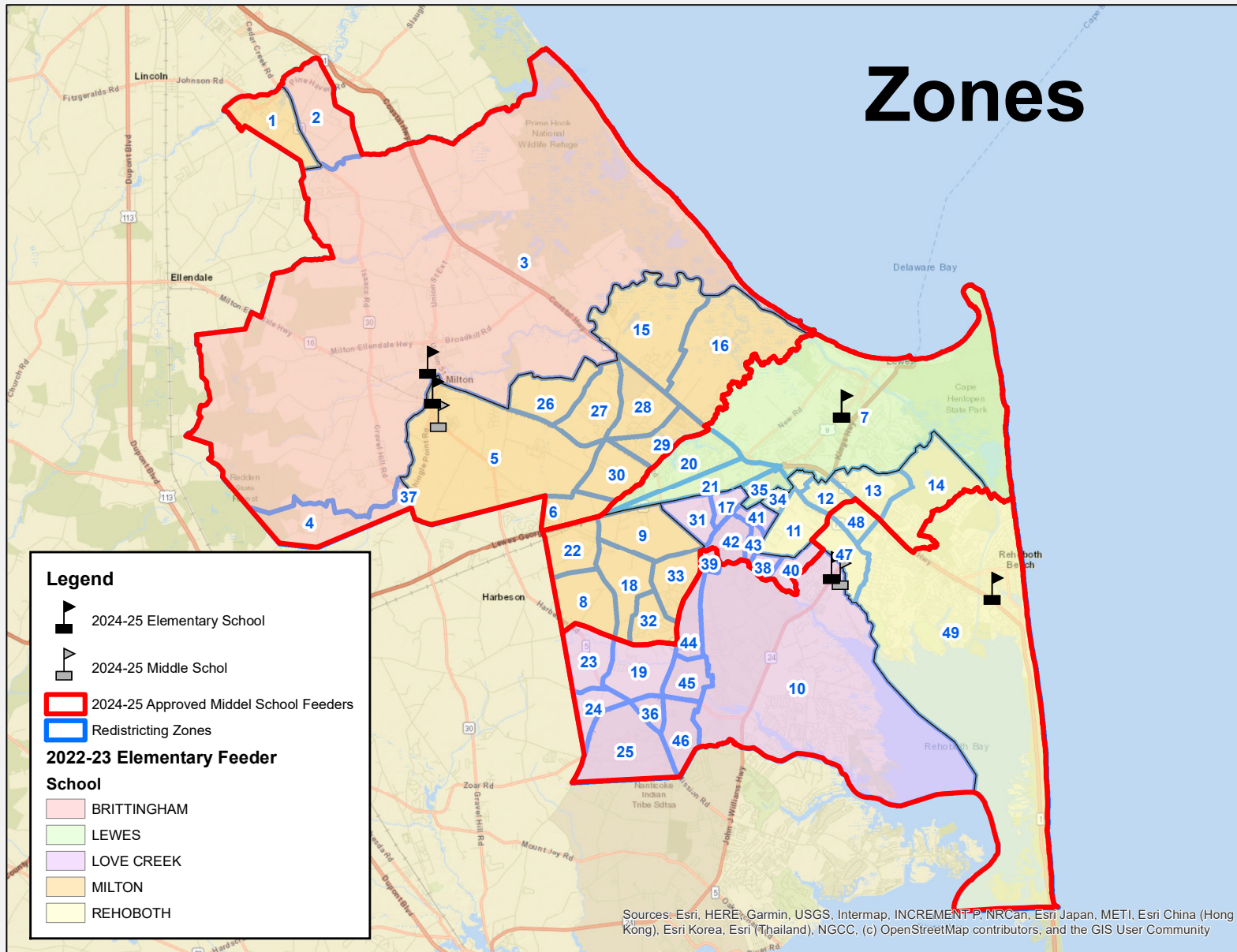
POSSIBLE SOLUTIONS

ENROLLMENT AREAS

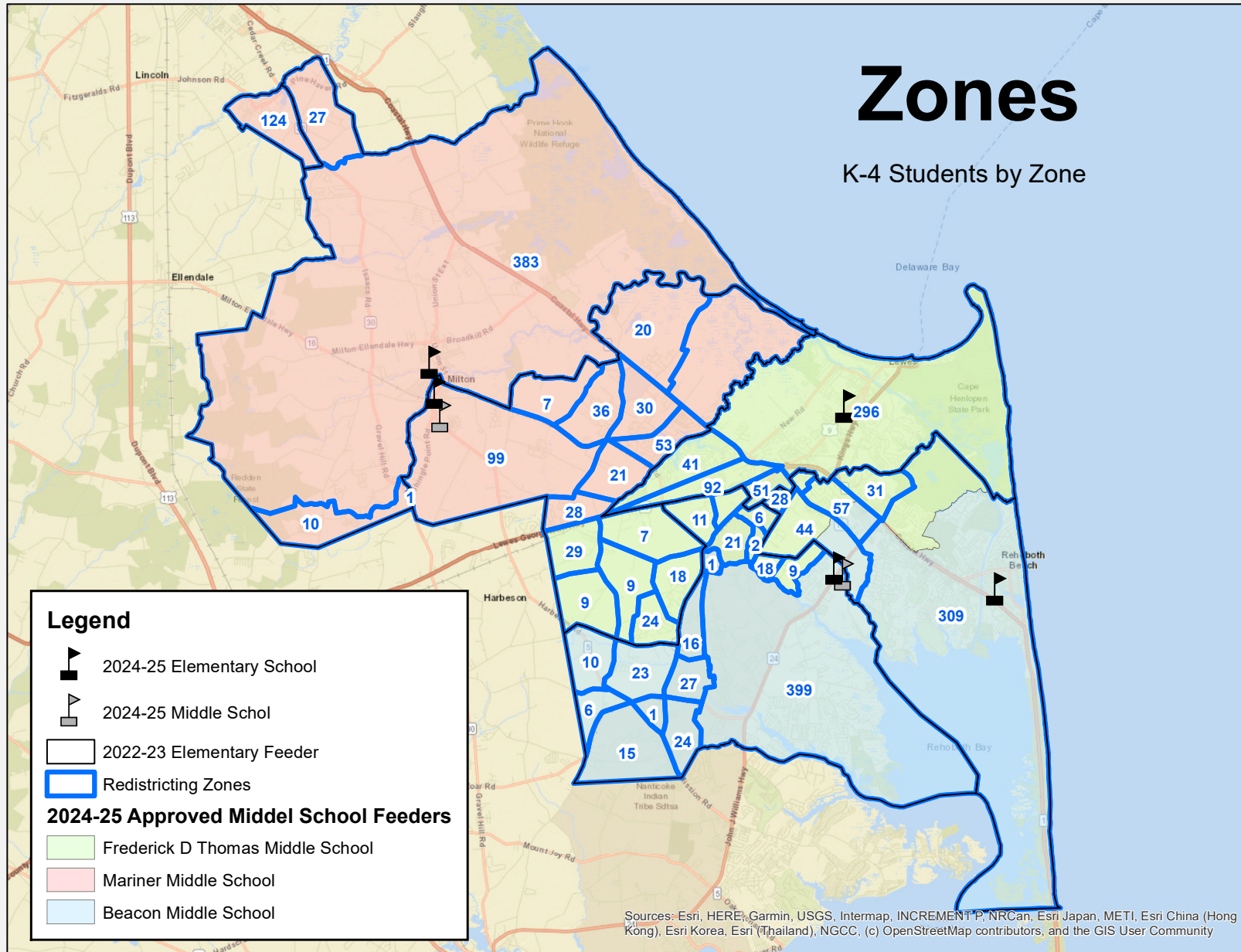


ENROLLMENT AREAS

Zones



K-4 # OF STUDENTS BY AREA



LOVE CREEK - ENLARGED ENROLLMENT AREAS

Zones

Legend



2024-25 Elementary School



2024-25 Middle Schol

Love Creek (587 K-4 Students)



2022-23 Elementary Feeder



Redistricting Zones

2024-25 Approved Middel School Feeders



Frederick D Thomas Middle School



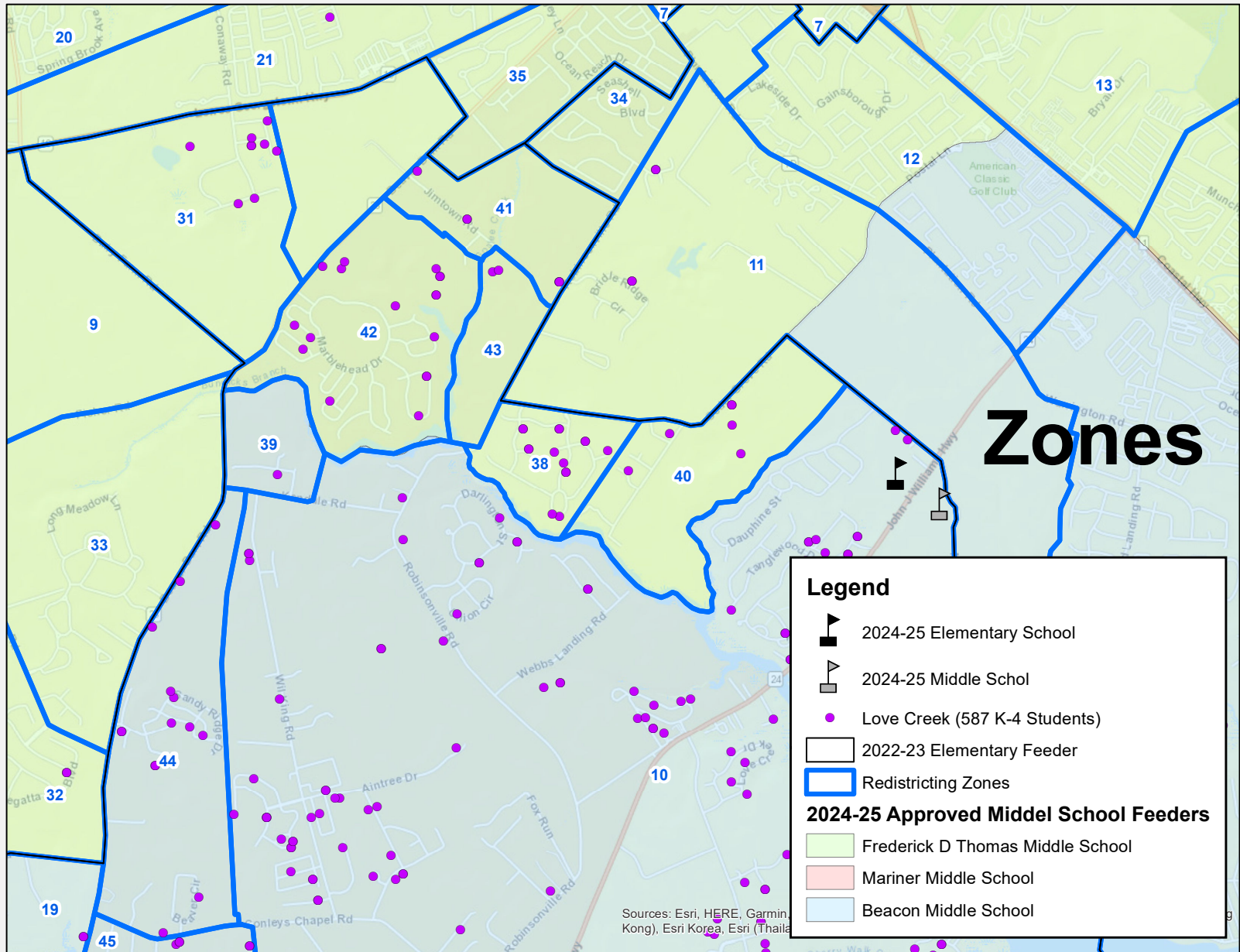
Mariner Middle School



Beacon Middle School

Sources: Esri, HERE, Garmin, USGS, Intermap, INCREMENT P, NRCan, Esri Japan, METI, Esri China (Hong Kong), Esri Korea, Esri (Thailand), NGCC, (c) OpenStreetMap contributors, and the GIS User Community

LOVE CREEK - ENLARGED ENROLLMENT AREAS



ELEMENTARY TO MIDDLE

5TH GRADE STUDENT TRANSITION

WITH NO CHANGES TO ELEMENTARY SCHOOL ENROLLMENT AREAS

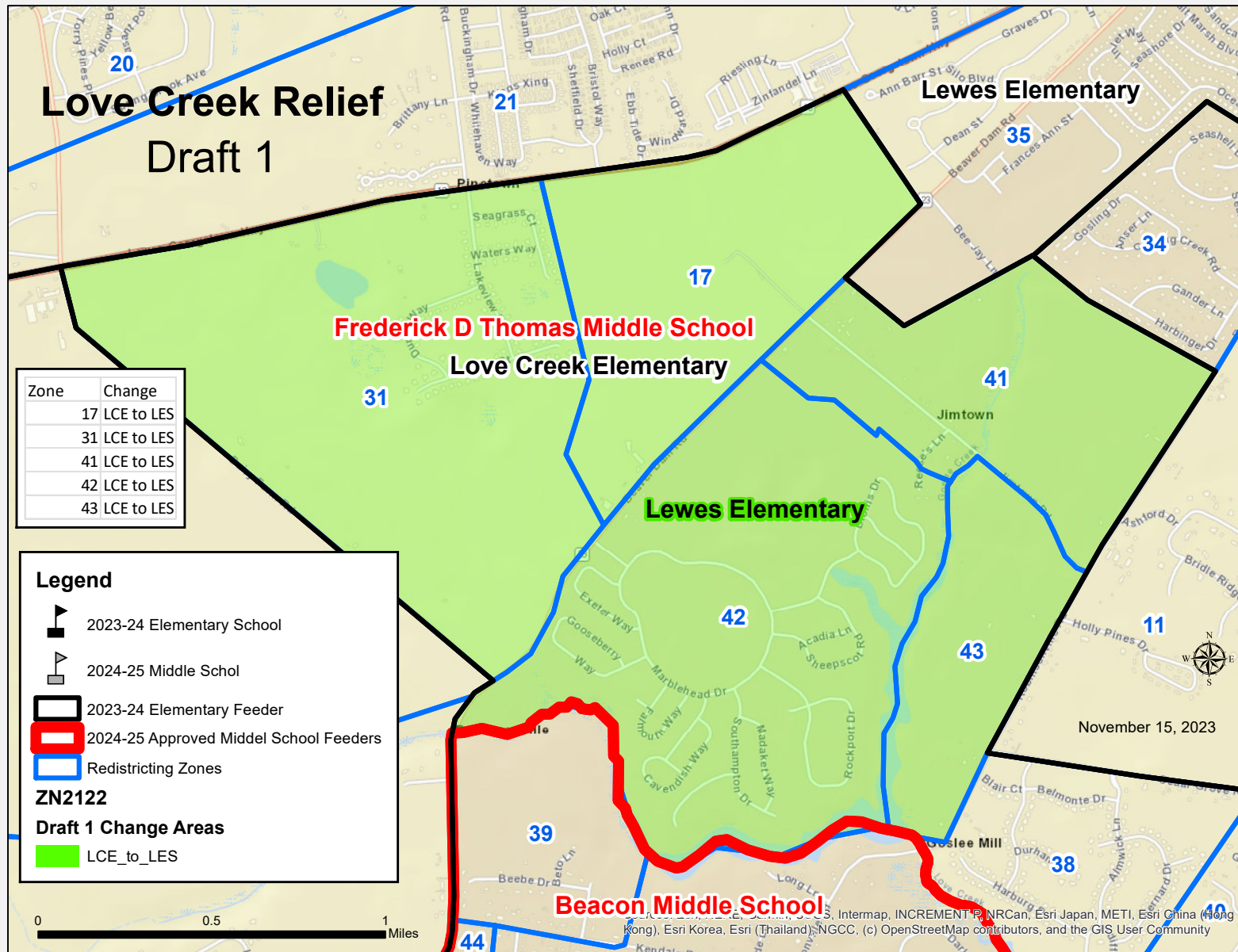
2024-2025

	HOB	MES	LES	LCE	RES
School Total 5 th Grade	86	99	80	109	85
Mariner	86	75	0	0	0
Beacon	0	0	0	90	54
Frederick Thomas	0	24	80	19	31

POSSIBLE SOLUTIONS

MODEL #1

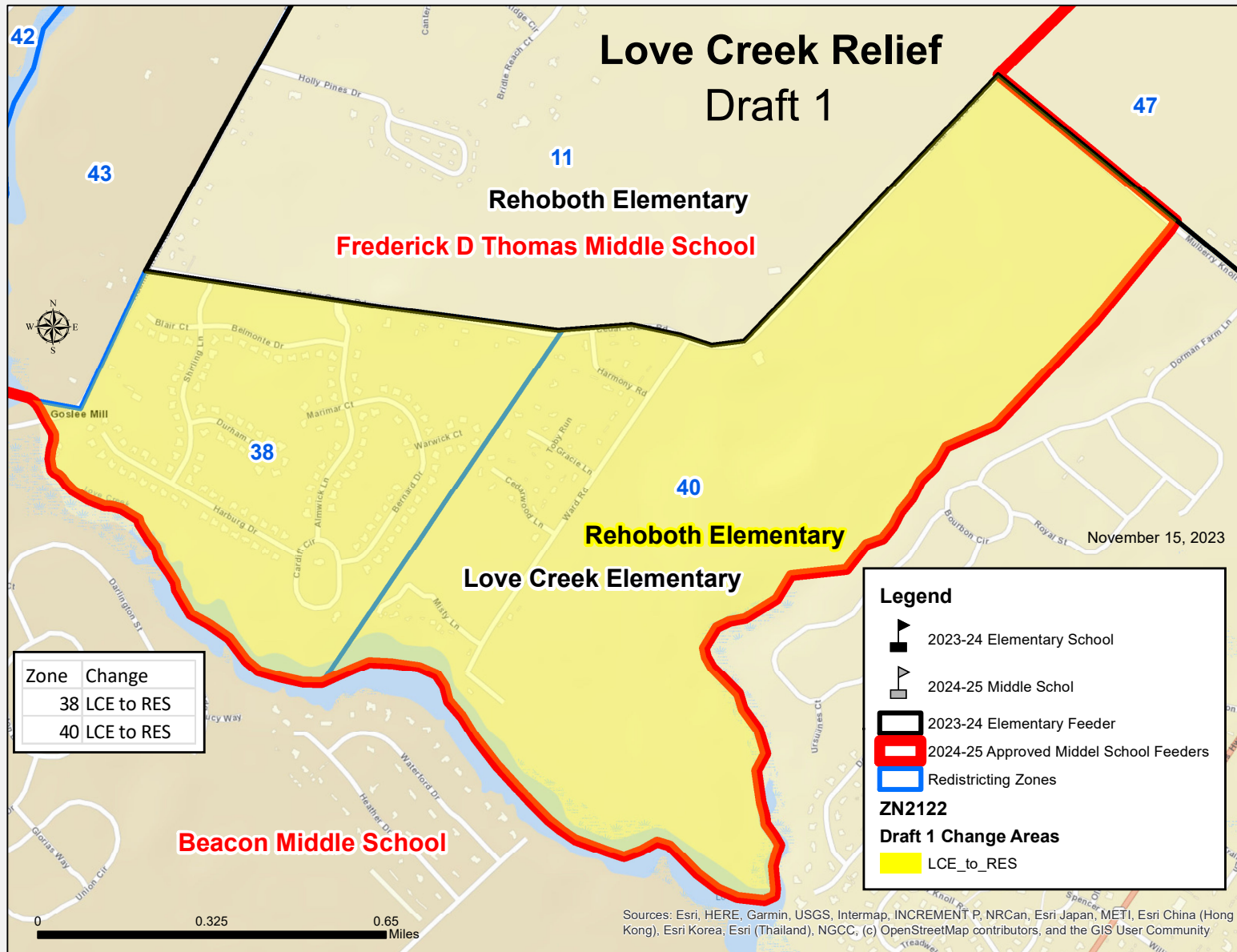
POSSIBLE CHANGES – LCE TO LES



POSSIBLE CHANGES – LCE TO LES

- Zone #17 (0 Students)
- Zone #31 (9 Students)
 - The Reserves at Lewes Landing
- Zone #41 (6 Students)
- Zone #42 (17 Students)
 - Coastal Club

POSSIBLE CHANGES – LCE TO RES



POSSIBLE CHANGES – LCE TO RES DEVELOPMENTS

- Zone #38 (15 Students)
 - The Retreat at Love Creek
- Zone #40 (6 Students)
 - Beachwoods
 - Welches Pond

POSSIBLE CHANGE MAP – MODEL #1

Love Creek Relief Draft 1

Zone	Change
17	LCE to LES
31	LCE to LES
41	LCE to LES
42	LCE to LES
43	LCE to LES
38	LCE to RES
40	LCE to RES

Legend



2023-24 Elementary School



2024-25 Middle School



2023-24 Elementary Feeder



2024-25 Approved Middle School Feeders

Draft 1 Change Areas



LCE_to_LES



LCE_to_RES



November 15, 2023

0 1 2
Miles

Sources: Esri, HERE, Garmin, USGS, Intermap, INCREMENT P, NRCan, Esri Japan, METI, Esri China (Hong Kong), Esri Korea, Esri (Thailand), NGCC, (c) OpenStreetMap contributors, and the GIS User Community

ELEMENTARY TO MIDDLE

5TH GRADE STUDENT TRANSITION

WITH NO CHANGES TO ELEMENTARY SCHOOL ENROLLMENT AREAS

2024-2025

	HOB	MES	LES	LCE	RES
School Total 5 th Grade	86	99	80	109	85
Mariner	86	75	0	0	0
Beacon	0	0	0	90	54
Frederick Thomas	0	24	80	19	31

ELEMENTARY ENROLLMENT

POSSIBLE CHANGES FOR 2024-2025

	HOB	MES	LES	LCE	RES
2023/2024	536	565	570	706	553
	+40	+40	+30	-150	+40
Possible Outcome 2024-2025	576	605	600	556	593
	+28	-22	+37	-83	+26
Model #1 2024-2025	548	543	607	623	579

ELEMENTARY ENROLLMENT AREAS DECISION TIMELINE

- September 28 - Presentation to Board of Education
- October 1st- 20th - Planning for Community/Parent Meeting
- October 23 – Community/Parent Meeting
- October 26 - Presentation to Board of Education
 - Presentation/Discussion
- October 27th – November 1st - Planning for Community/Parent Meeting
- November 15th – Community/Parent Meeting
- November 16 – Presentation to Board of Education
 - Update BOE and Provide Summary of November 15 Parent/Community Meeting
 - Presentation/Discussion – **No Action Taken On Agenda Item**
- December 8 – Recommended Elementary Areas for 2024-2025
 - Shared on Website the week prior to December 14 BOE meeting
- December 14 – Presentation to Board of Education
 - **Recommendation made by Superintendent – Action taken by BOE**

QUESTIONS/COMMENTS

THANK YOU