

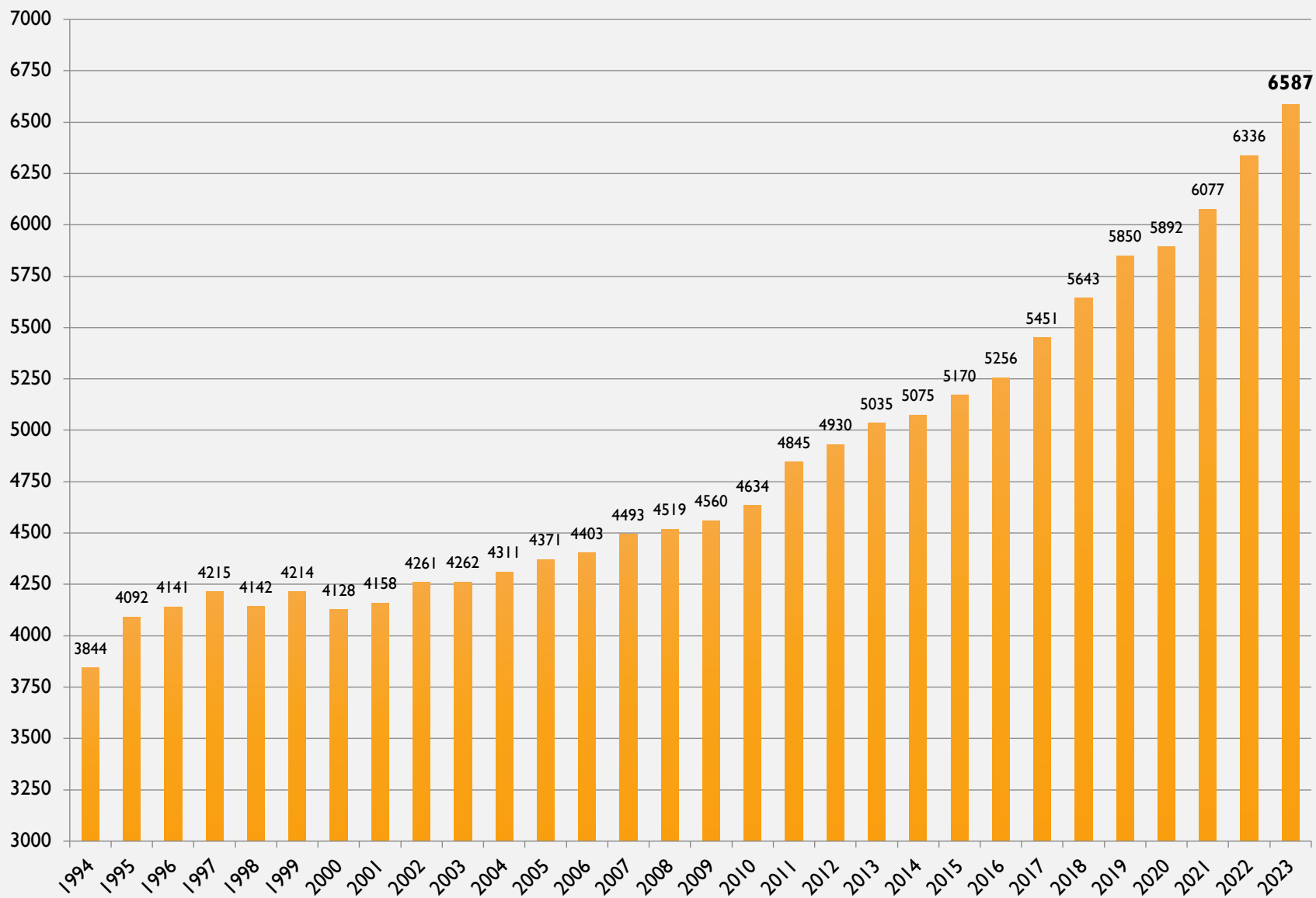
# ELEMENTARY SCHOOL ENROLLMENT

**PUBLIC MEETING**  
DECEMBER 14, 2023

# ELEMENTARY ENROLLMENT AREAS DECISION TIMELINE

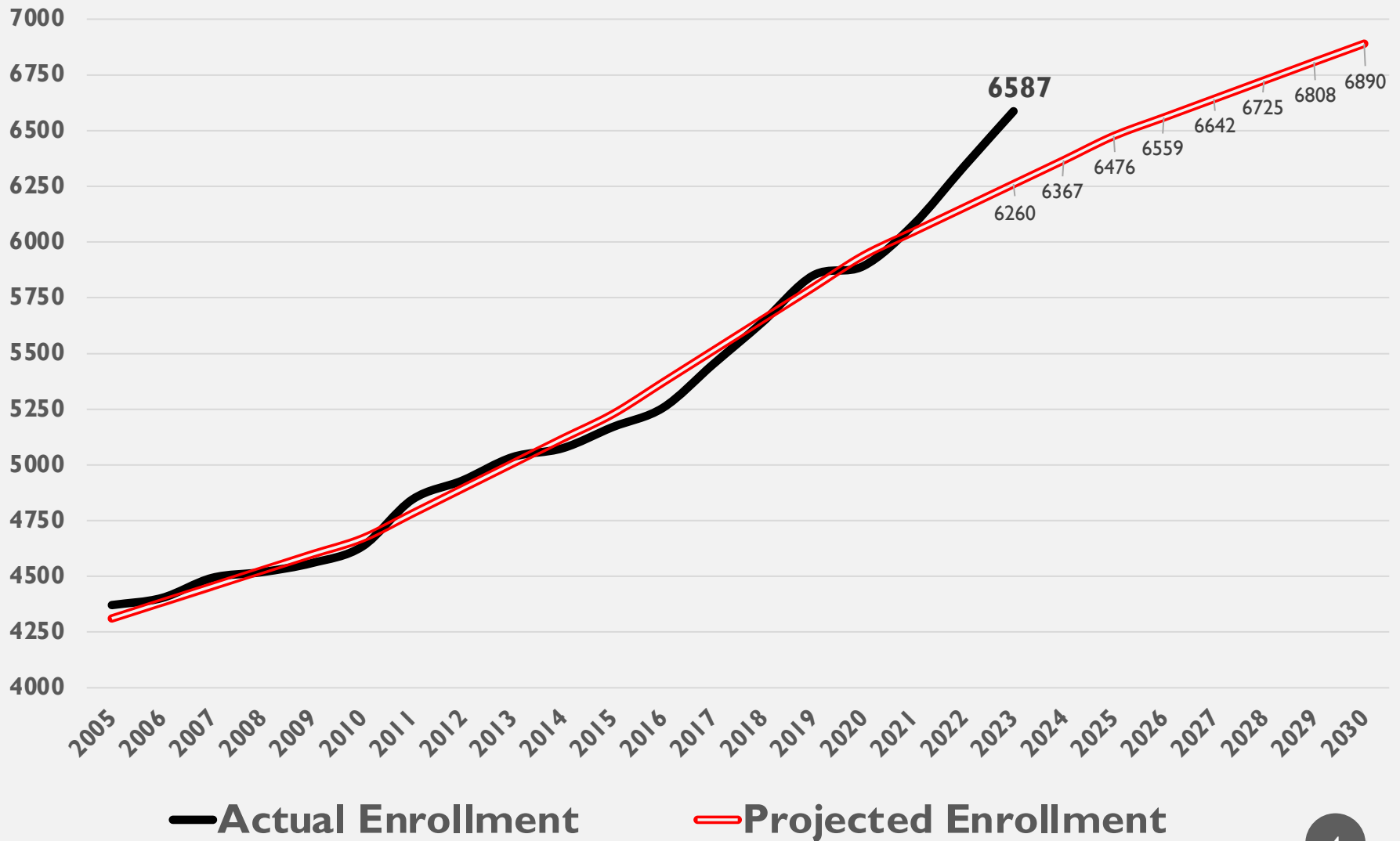
- September 28 - Presentation to Board of Education
- October 1<sup>st</sup>- 20<sup>th</sup> - Planning for Community/Parent Meeting
- October 23 – Community/Parent Meeting
- October 26 - Presentation to Board of Education
  - Presentation/Discussion
- October 27<sup>th</sup> – November 1<sup>st</sup> - Planning for Community/Parent Meeting
- November 15<sup>th</sup> – Community/Parent Meeting
- November 16 – Presentation to Board of Education
  - Update BOE and Provide Summary of November 15 Parent/Community Meeting
  - Presentation/Discussion – **No Action Taken On Agenda Item**
- December 8 – Recommended Elementary Areas for 2024-2025
  - Shared on Website the week prior to December 14 BOE meeting
- December 14 – Presentation to Board of Education
  - **Recommendation made by Superintendent – Action taken by BOE**

# INCREASING ENROLLMENT



# ACTUAL V PROJECTED ENROLLMENT

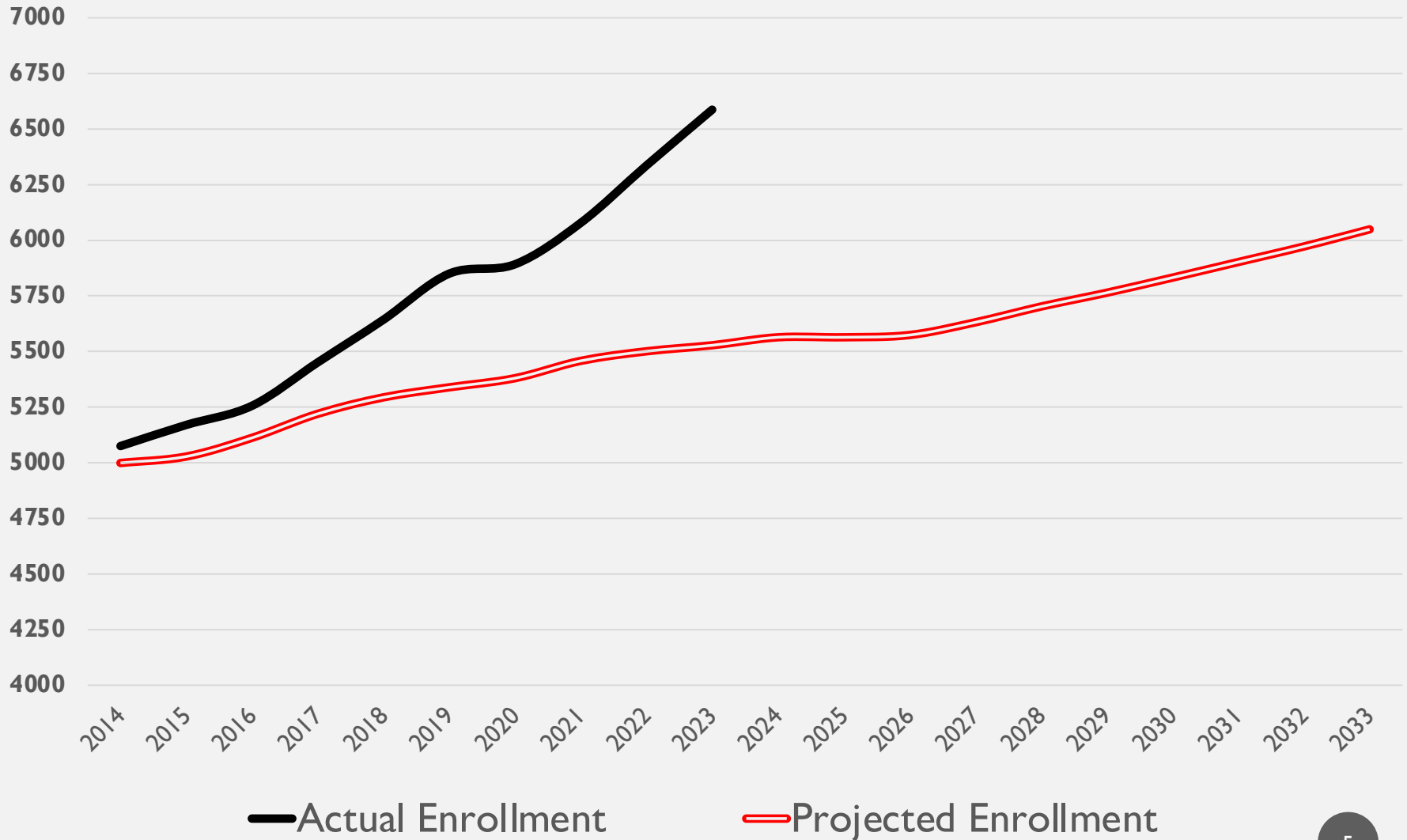
## UD 2004 ENROLLMENT STUDY





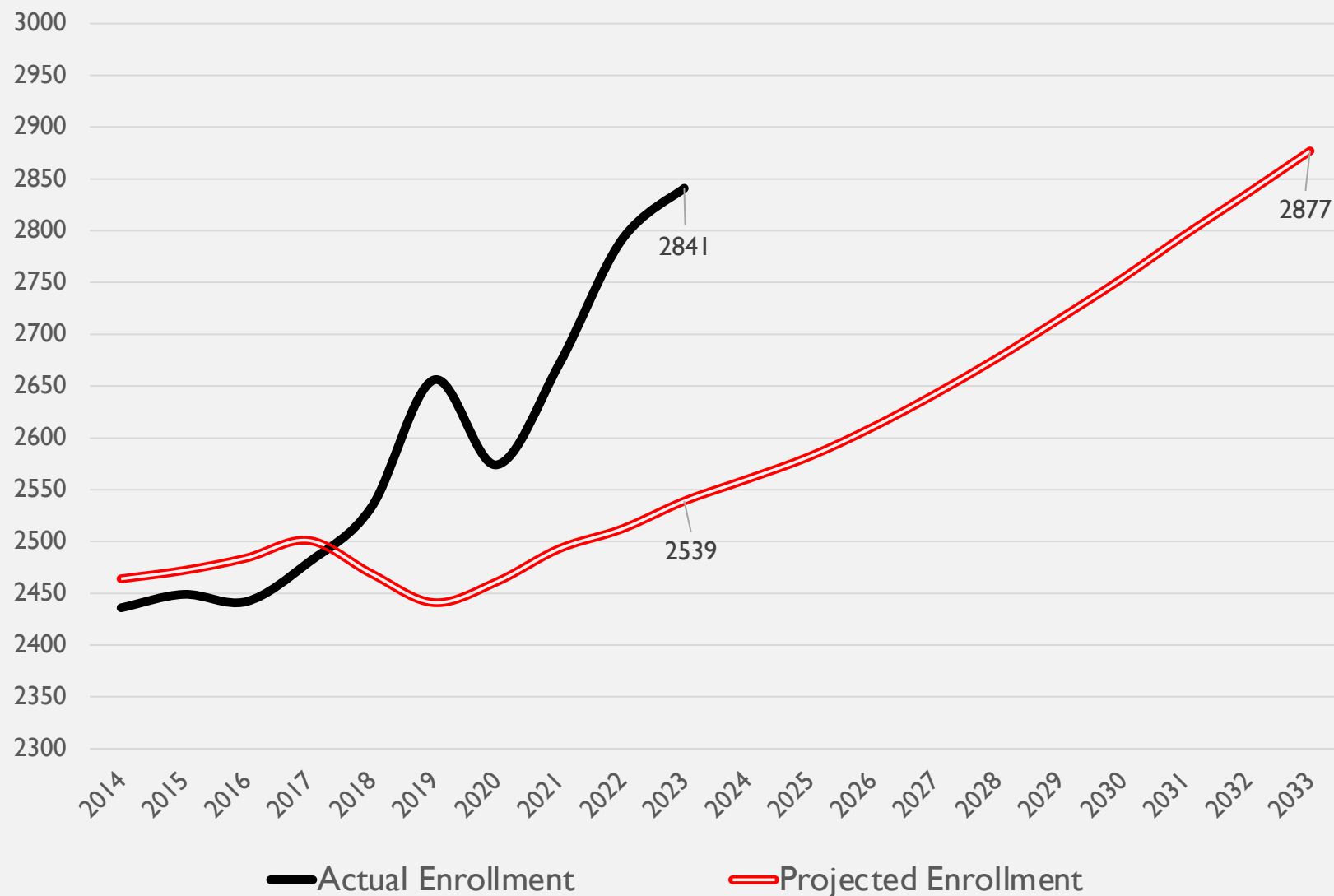
# ACTUAL V PROJECTED ENROLLMENT

## UD 2013 ENROLLMENT STUDY

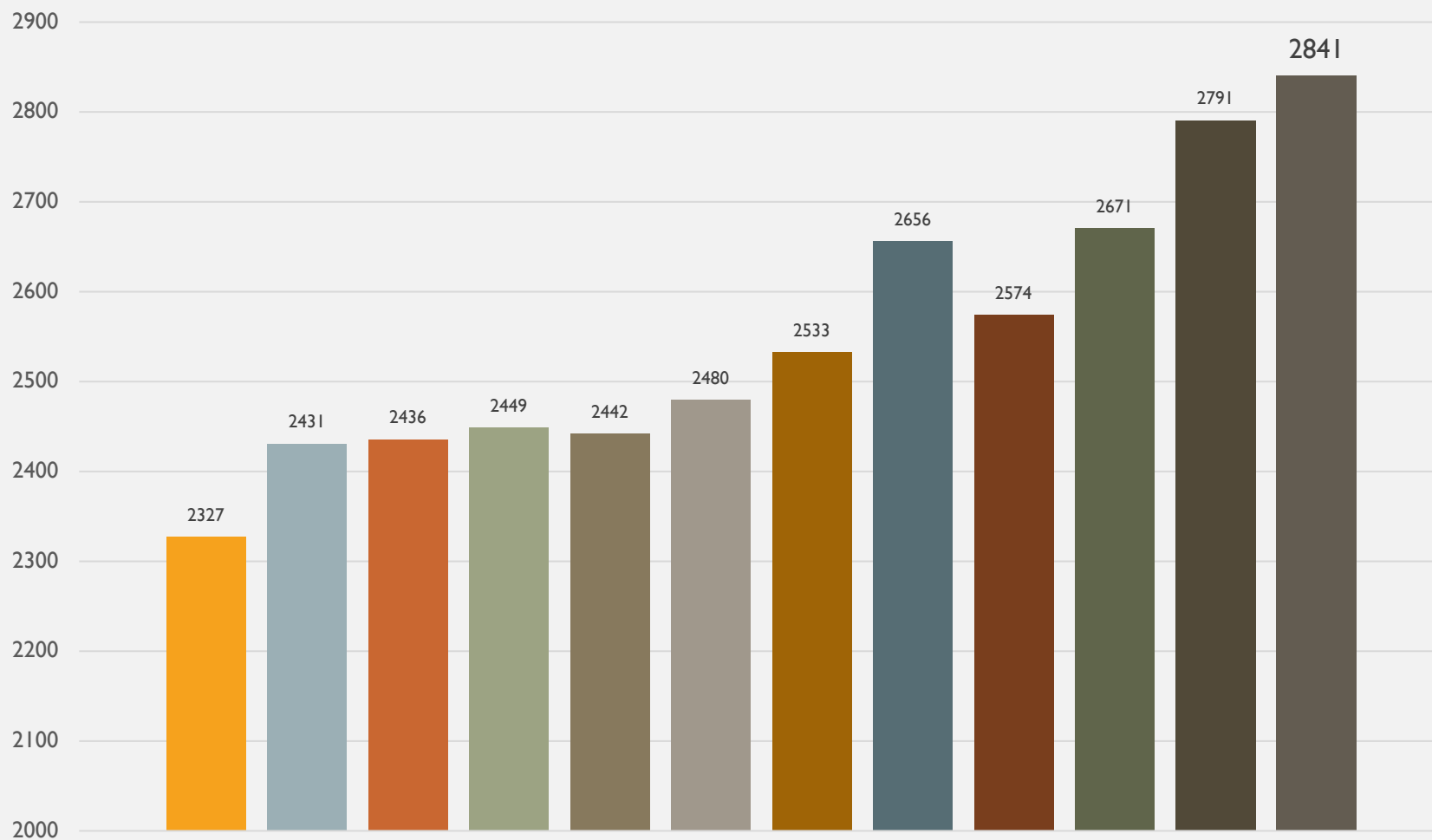


# ACTUAL V PROJECTED – ELEMENTARY ENROLLMENT

## UD 2013 ENROLLMENT STUDY



# ELEMENTARY ENROLLMENT 2023-2024

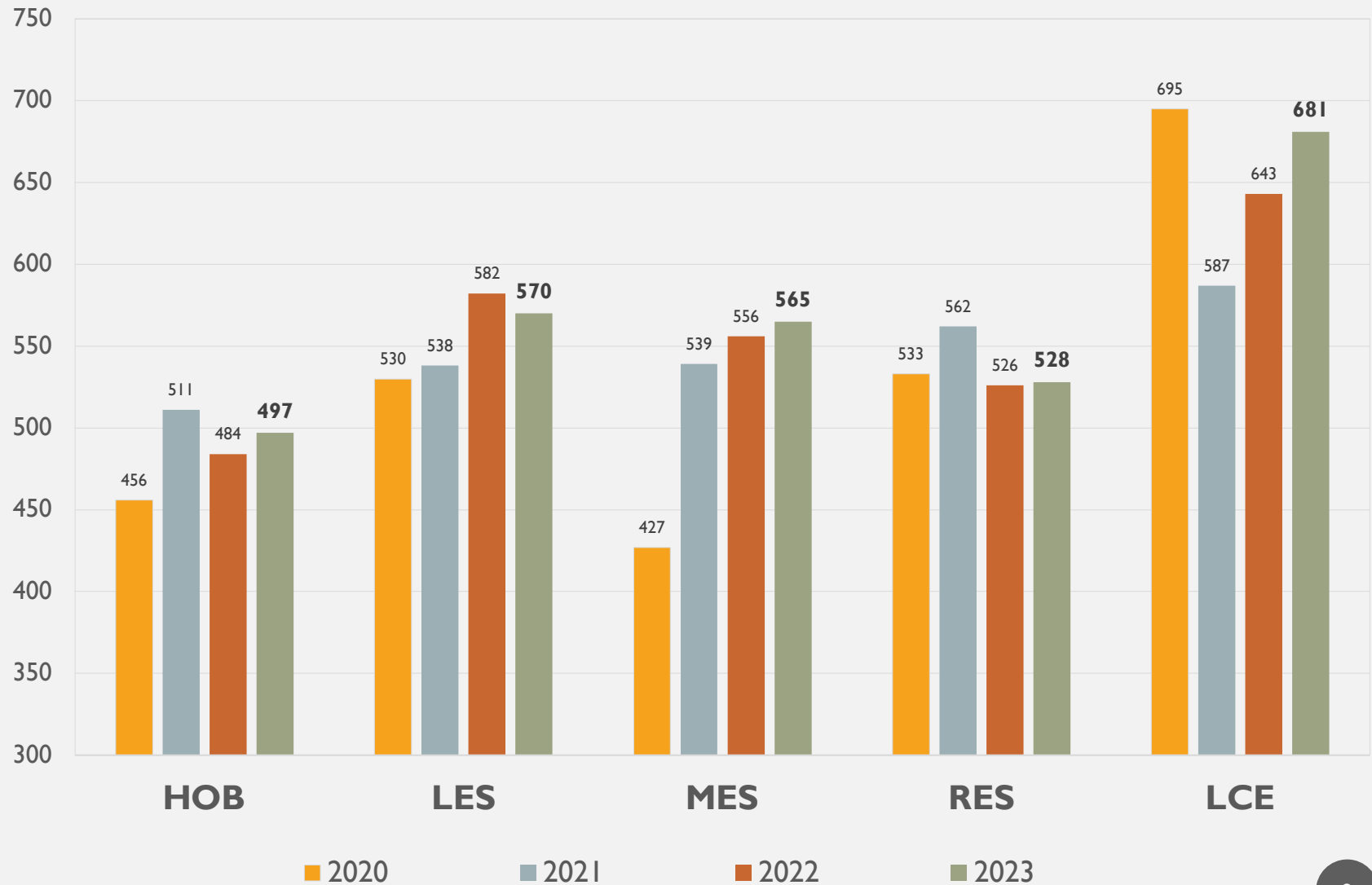


2012 2013 2014 2015 2016 2017 2018 2019 2020 2021 2022 2023

# HISTORY OF ENROLLMENT AREAS

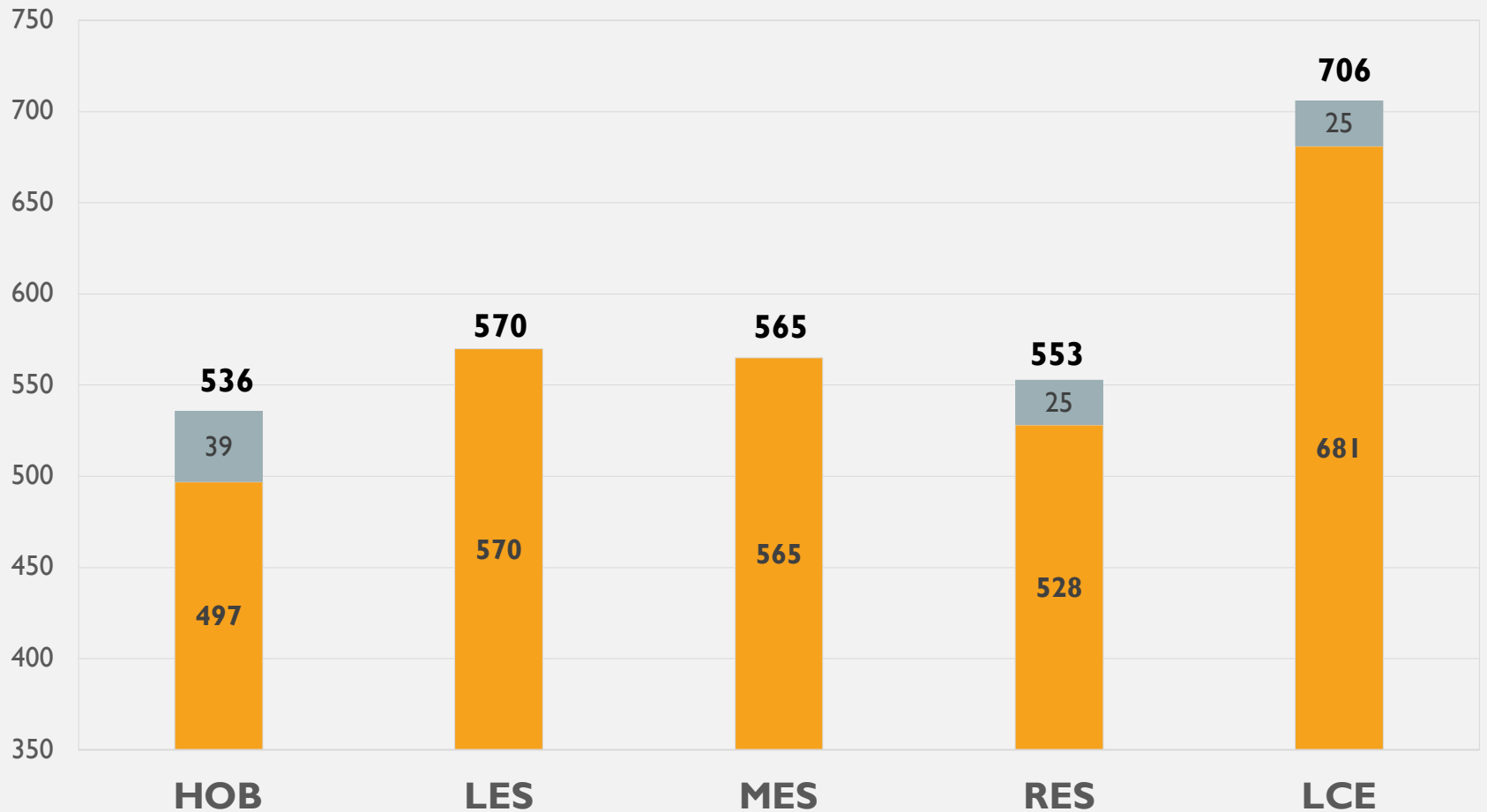
- 2017-2018 School Year - 5 Elementary Schools
  - Planning in Fall of 2016 for Fall 2017 Implementation
- 2019-2020 School Year – No Change
  - Discussions in Fall of 2018 for Fall 2019 Implementation
- 2021-2022 School Year
  - Discussions in Fall of 2020 for Fall 2021 Implementation
- 2023-2024 School Year
  - Discussions in Fall of 2023 for Fall 2024 Implementation

# ELEMENTARY ENROLLMENT TRENDS (2020-2023)



# ELEMENTARY ENROLLMENT 2023-2024

## INCLUDING SUSSEX CONSORTIUM STUDENTS



# ELEMENTARY ENROLLMENT

## POSSIBLE CHANGES FOR 2024-2025

	HOB	MES	LES	LCE	RES
2023/2024	536	565	570	706	553
	+40	+40	+30	-150	+40
2024-2025	576	605	600	556	593

# ENROLLMENT AREA CONSIDERATIONS

- #'s of Students in Each School
- Projected Growth for Each Enrollment Area
- Not Splitting Developments
- Distance/Time to Schools
- SES of Students in Each of our Schools
- Special Programs
  - Cape Accelerated Program
  - Spanish Immersion



# **DECREASE ENROLLMENT**

## **LOVE CREEK ELEMENTARY SCHOOL**

### **ORDER OF PRIORITIES**

1. Students Residing Within the Current Attendance Boundaries of Love Creek Elementary
2. School Choice Students Currently Attending Love Creek Elementary School
3. Changing Attendance Boundaries to decrease the number of Students attending Love Creek Elementary School

LOVE CREEK ELEMENTARY  
SCHOOL CHOICE  
2023-2024

# LOVE CREEK ELEMENTARY

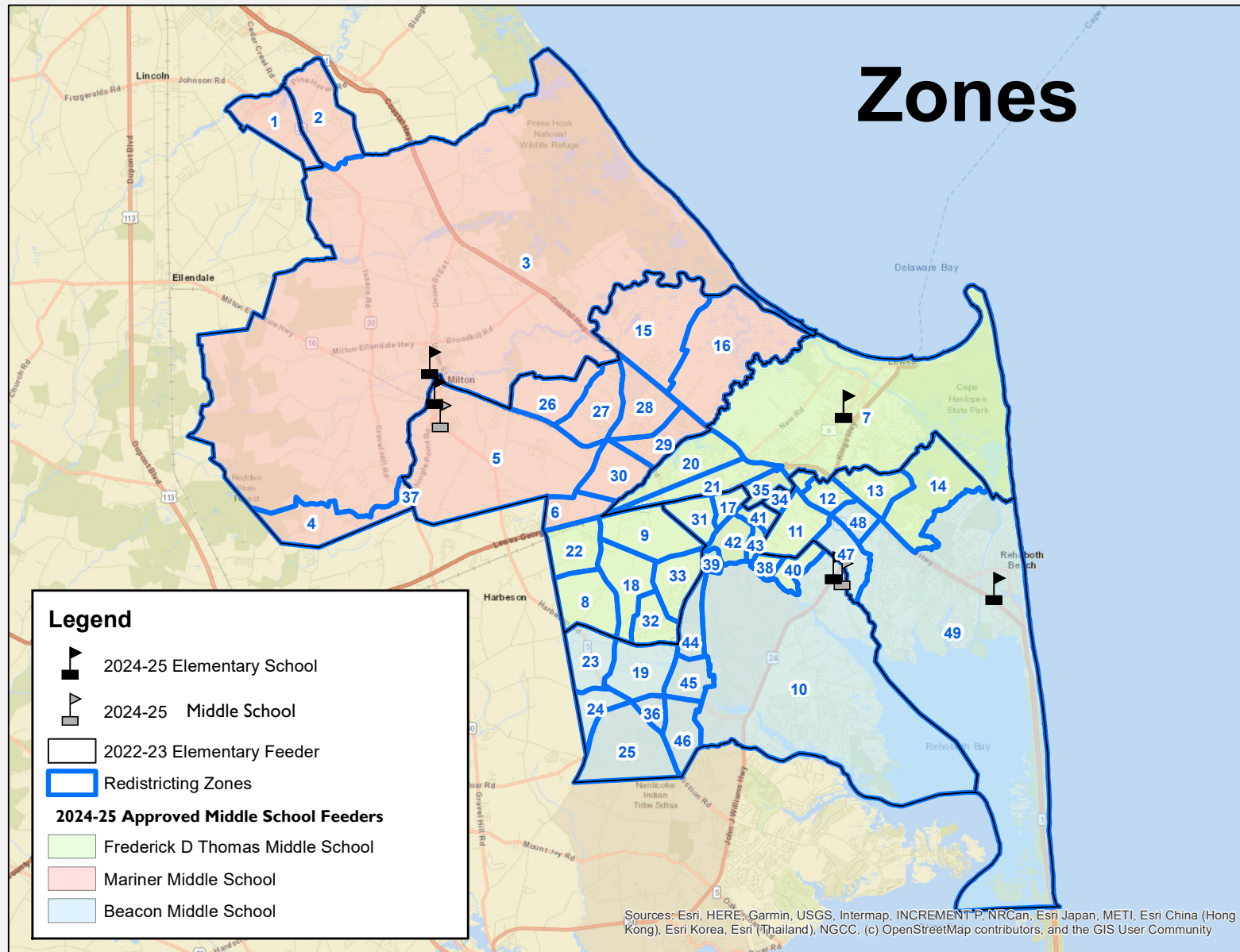
## SCHOOL CHOICE

### 2023-2024

	Out - Staff	In - Staff	Out - Non - Staff	In – Non - Staff	TOTAL
K	0	1	1	0	2
I	4	7	2	2	15
2	1	5	5	4	15
3	5	4	5	2	16
4	7	4	4	0	15
TOTAL	17	21	17	8	63
	38		25		
	63				

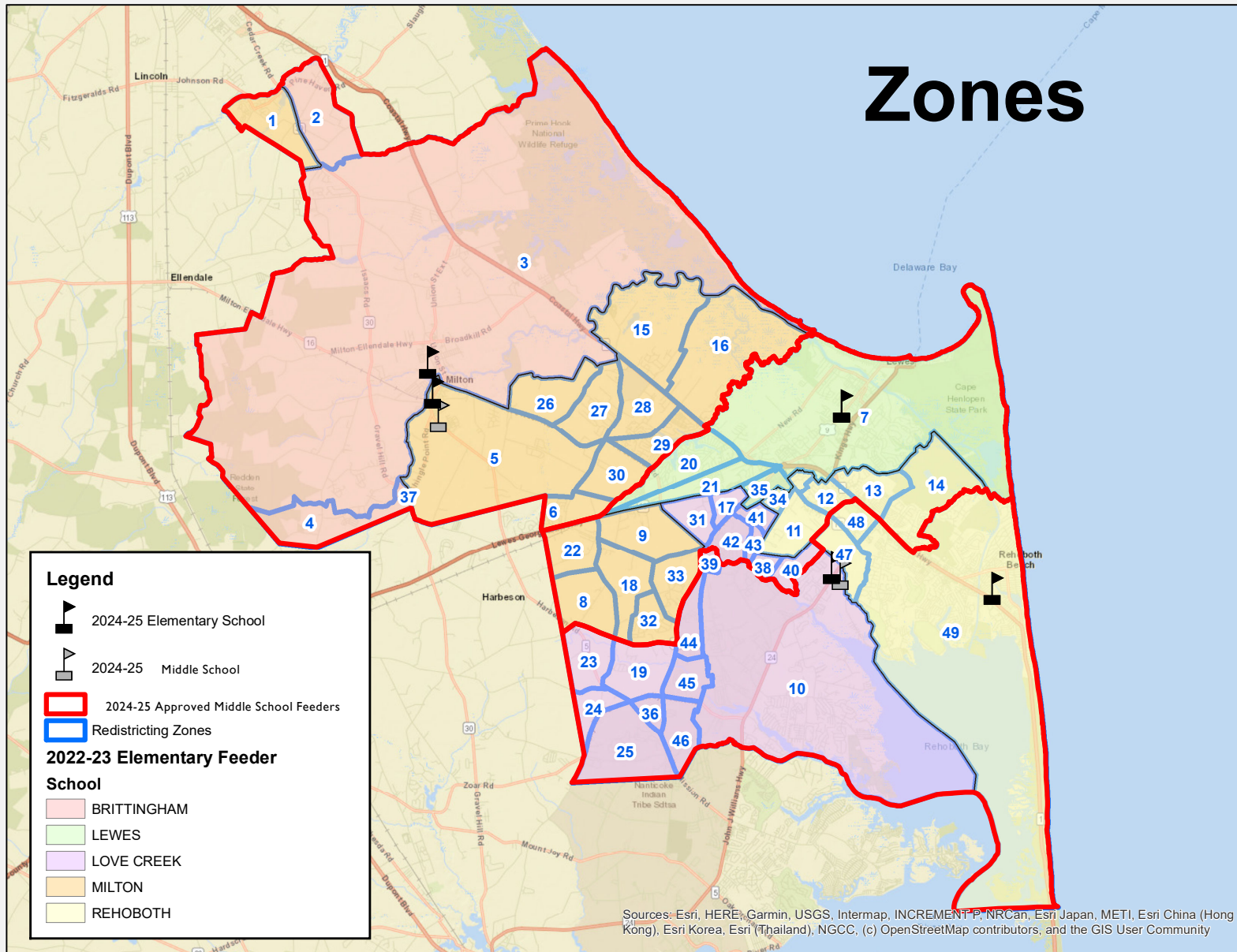
# POSSIBLE SOLUTIONS

# ENROLLMENT AREAS



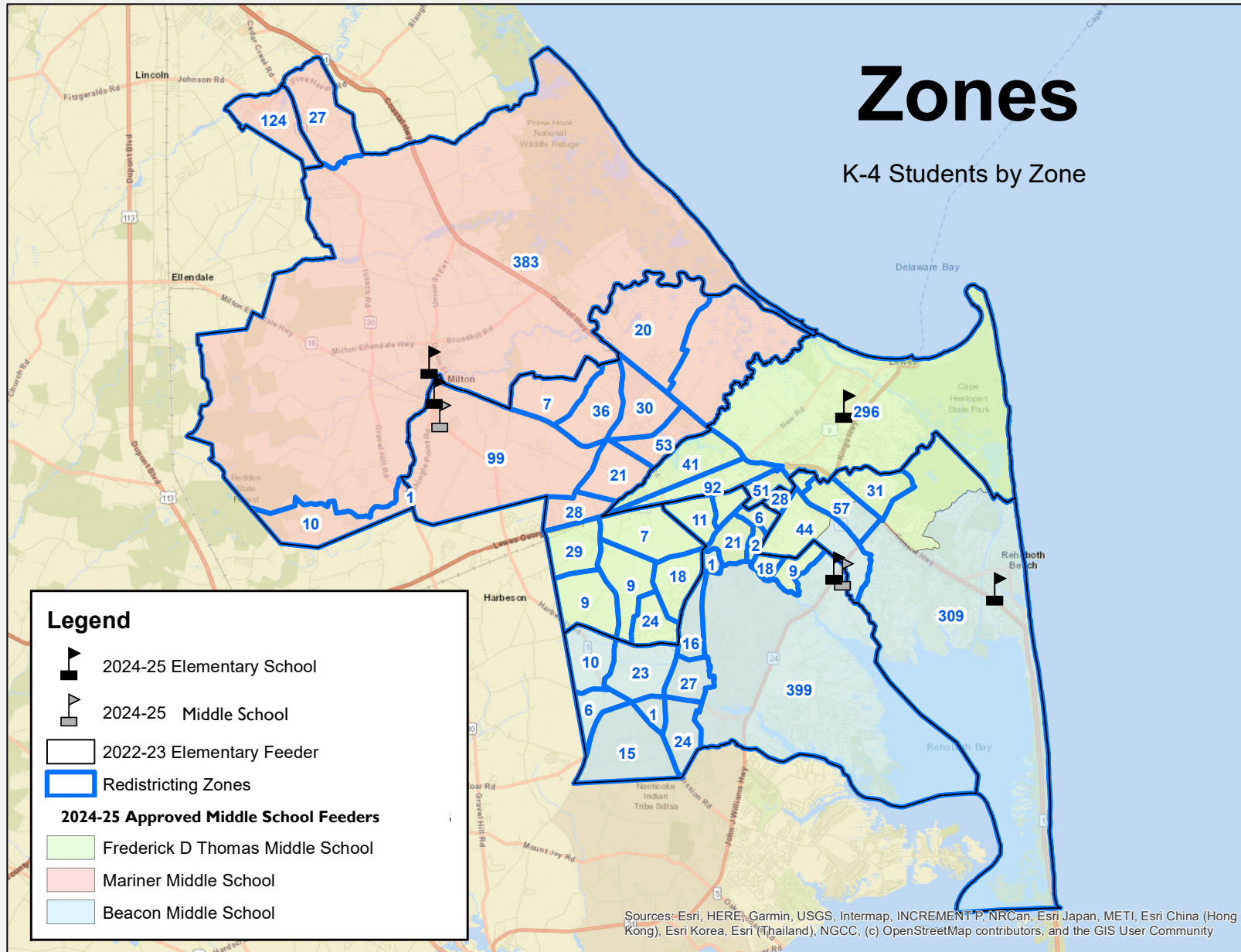
# ENROLLMENT AREAS

## Zones





# K-4 # OF STUDENTS BY AREA



# LOVE CREEK - ENLARGED ENROLLMENT AREAS

## Zones

### Legend



2024-25 Elementary School



2024-25 Middle School

Love Creek (587 K-4 Students)



2022-23 Elementary Feeder



Redistricting Zones

### 2024-25 Approved Middle School Feeders



Frederick D Thomas Middle School



Mariner Middle School

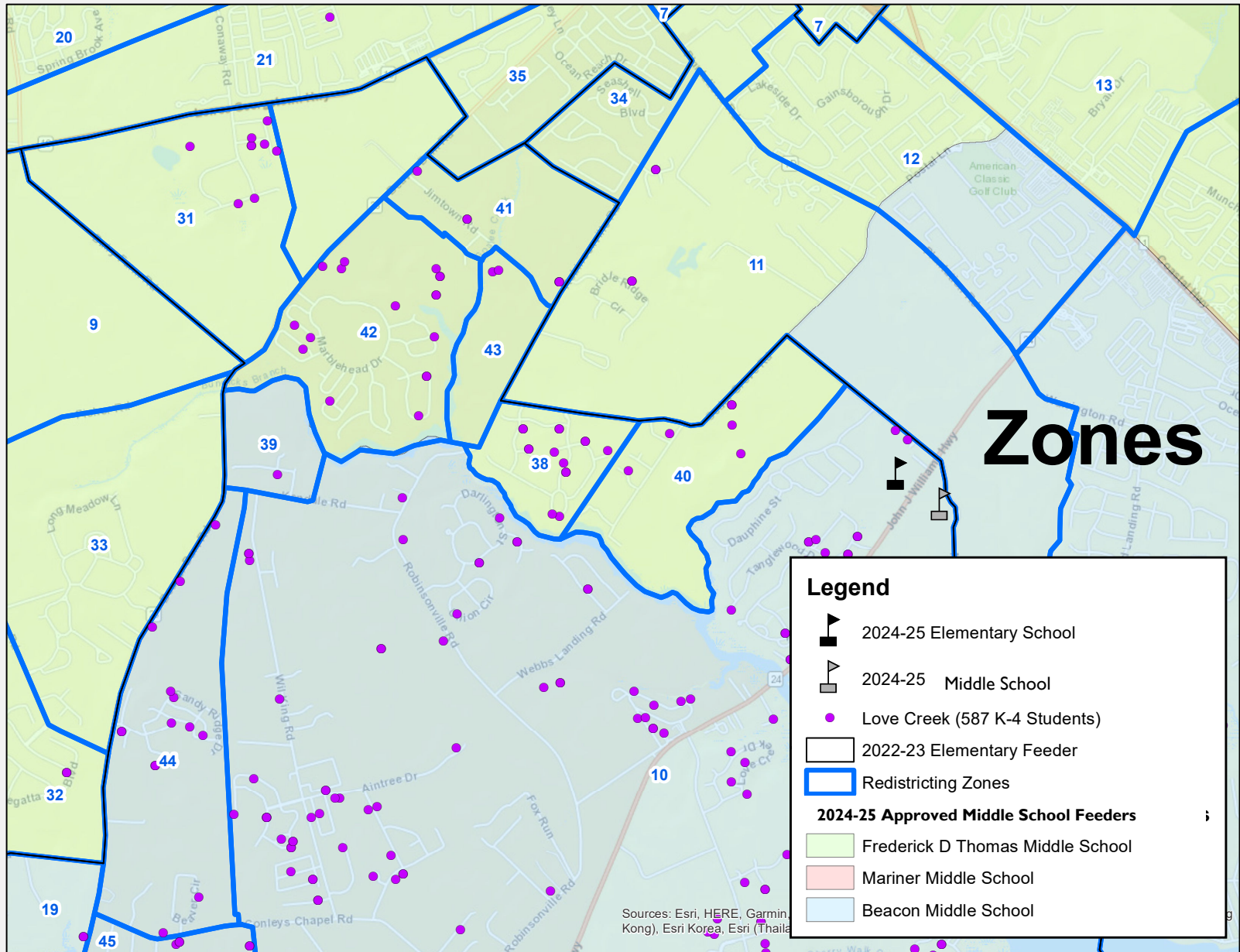


Beacon Middle School

Sources: Esri, HERE, Garmin, USGS, Intermap, INCREMENT P, NRCan, Esri Japan, METI, Esri China (Hong Kong), Esri Korea, Esri (Thailand), NGCC, (c) OpenStreetMap contributors, and the GIS User Community



# LOVE CREEK - ENLARGED ENROLLMENT AREAS



# ELEMENTARY TO MIDDLE

## 5<sup>TH</sup> GRADE STUDENT TRANSITION

### WITH NO CHANGES TO ELEMENTARY SCHOOL ENROLLMENT AREAS

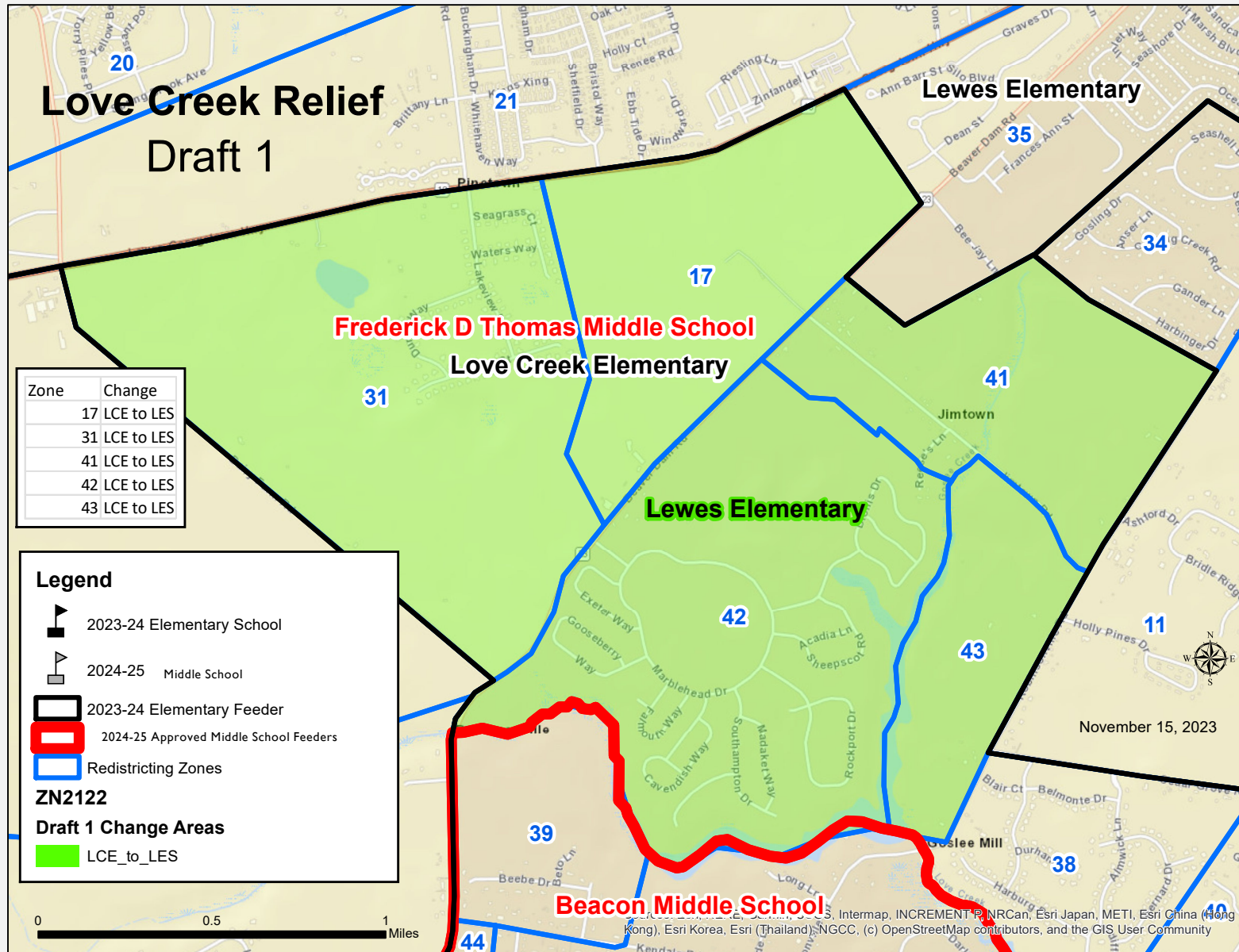
#### 2024-2025

	HOB	MES	LES	LCE	RES
<b>School Total</b> 5 <sup>th</sup> Grade	86	99	80	109	85
<b>Mariner</b>	86	75	0	0	0
<b>Beacon</b>	0	0	0	90	54
<b>Frederick Thomas</b>	0	24	80	19	31

# POSSIBLE SOLUTIONS

## MODEL #1

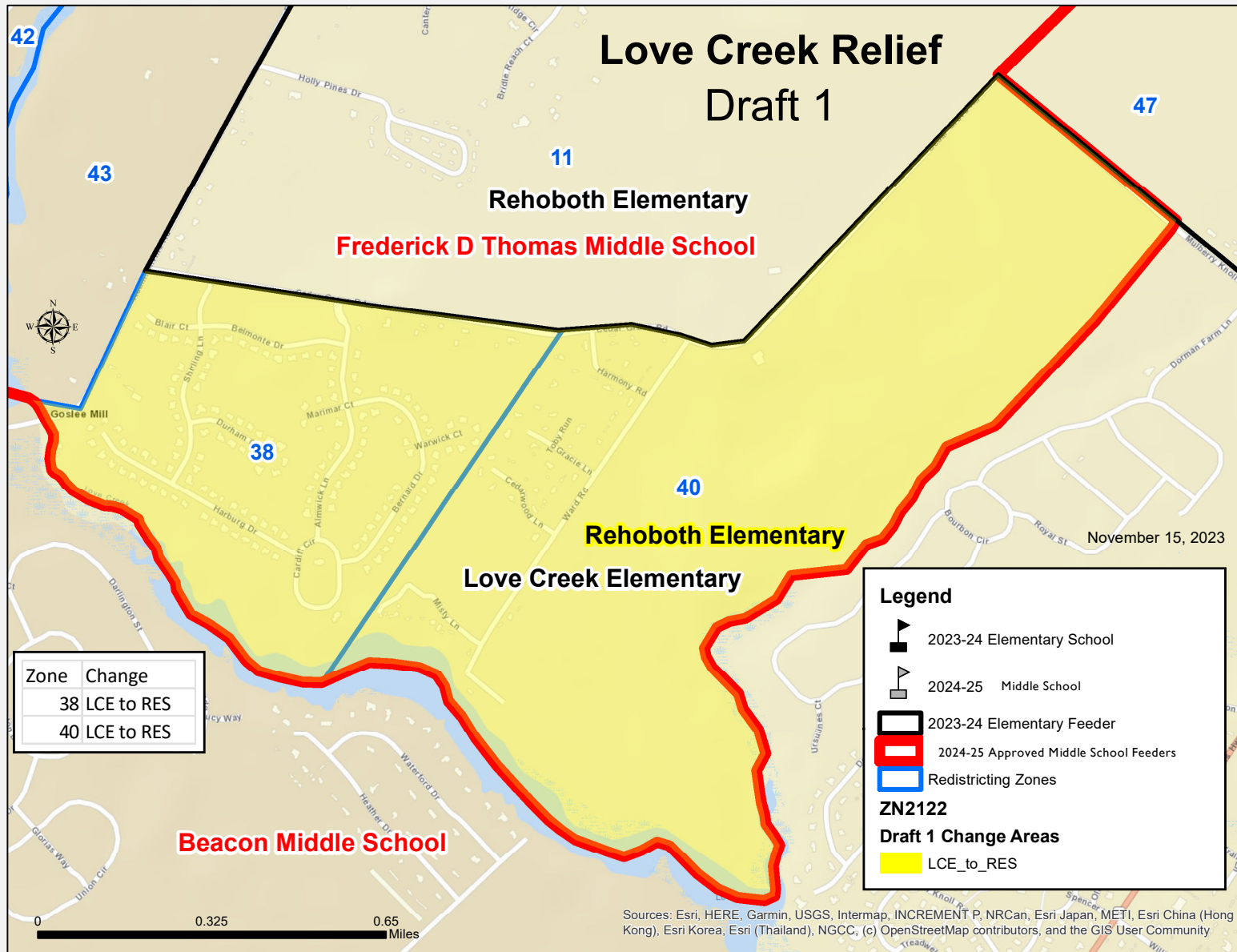
# POSSIBLE CHANGES – LCE TO LES



## POSSIBLE CHANGES – LCE TO LES

- Zone #17 (0 Students)
- Zone #31 (9 Students)
  - The Reserves at Lewes Landing
- Zone #41 (6 Students)
- Zone #42 (17 Students)
  - Coastal Club

# POSSIBLE CHANGES – LCE TO RES



## POSSIBLE CHANGES – LCE TO RES DEVELOPMENTS

- Zone #38 (15 Students)
  - The Retreat at Love Creek
- Zone #40 (6 Students)
  - Beachwoods
  - Welches Pond



# POSSIBLE CHANGE MAP – MODEL #1

## Love Creek Relief Draft 1

Zone	Change
17	LCE to LES
31	LCE to LES
41	LCE to LES
42	LCE to LES
43	LCE to LES
38	LCE to RES
40	LCE to RES

### Legend



2023-24 Elementary School



2024-25 Middle School



2023-24 Elementary Feeder



2024-25 Approved Middle School Feeder

### Draft 1 Change Areas



LCE\_to\_LES



LCE\_to\_RES



November 15, 2023

0 1 2  
Miles

Sources: Esri, HERE, Garmin, USGS, Intermap, INCREMENT P, NRCan, Esri Japan, METI, Esri China (Hong Kong), Esri Korea, Esri (Thailand), NGCC, (c) OpenStreetMap contributors, and the GIS User Community



# ELEMENTARY TO MIDDLE

## 5<sup>TH</sup> GRADE STUDENT TRANSITION

### WITH NO CHANGES TO ELEMENTARY SCHOOL ENROLLMENT AREAS

#### 2024-2025

	HOB	MES	LES	LCE	RES
<b>School Total</b> 5 <sup>th</sup> Grade	86	99	80	109	85
<b>Mariner</b>	86	75	0	0	0
<b>Beacon</b>	0	0	0	90	54
<b>Frederick Thomas</b>	0	24	80	19	31

# ELEMENTARY ENROLLMENT

## POSSIBLE CHANGES FOR 2024-2025

	HOB	MES	LES	LCE	RES
<b>2023/2024</b>	<b>536</b>	<b>565</b>	<b>570</b>	<b>706</b>	<b>553</b>
	+40	+40	+30	-150	+40
<b>Possible Outcome 2024-2025</b>	<b>576</b>	<b>605</b>	<b>600</b>	<b>556</b>	<b>593</b>
	+28	-22	+37	-83	+26
<b>Model #1 2024-2025</b>	<b>548</b>	<b>543</b>	<b>607</b>	<b>623</b>	<b>579</b>

# PARENT FEEDBACK

# PARENT/COMMUNITY FEEDBACK

- **5** - Will be difficult for students with so many unfamiliar faces in their new school, especially because the relationships built with classmates and staff in their Spanish Immersion classes. Many of the students involved have been in Love Creek for several years.
- **5** - Logistical concerns/distance from Rehoboth as compared to Love Creek. Moving students from their neighborhood school to a school all the way in Rehoboth.
- **4** - Some students will be moving to a new elementary school then will be moving again to middle school without a majority of their Rehoboth fifth grade classmates.
- **3** - It will be logistically difficult to possibly have students at Rehoboth for elementary school and Fred Thomas for middle school at the same time.
- **3**- If a change needs to be made, all of the students should be moved to Lewes so that they would travel to Middle school with all of the students from their 5<sup>th</sup> grade class.
- **2** - Families from areas being moved are regularly involved as volunteers in the school. Will lose parent involvement in the schools
- **2** - Move will negatively impact the Spanish Immersion Program and the students in the program who are moving to a new elementary school.
- District should consider adding modular classroom at Love Creek and not make changes to enrollment areas.
- Students living farther west on Rt 24 should be sent to Rehoboth for elementary and then Beacon for middle school. Students being moved to Rehoboth in the latest proposal should be sent to Lewes for elementary school, then Fred Thomas for middle school.
- Students proposed to go to Lewes should be sent to Milton and those moving to Rehoboth should go to Lewes. This would increase the number of students in MES attendance area attending Fred Thomas. This would also increase the lower number of students at MES.
- Suggestion for other variations of zones being moved from Love Creek to other schools (Milton/Rehoboth/Lewes) and adjusting middle school attendance zones. (Current zones being proposed to move to Rehoboth would go to Lewes)
- Explore possibility of redistricting certain areas of the Cape Henlopen School District to the Indian River School District.

**\*number prior to the comment indicates number of times the comment was made**

# RECOMMENDATION

- Recommendation is to move forward with Model #1, which was the option shared at the previous Board of Education meeting on November 16.

# RECOMMENDATION

## Love Creek to Lewes

- Zone #17 (0 Students)
- Zone #31 (9 Students)
  - The Reserves at Lewes Landing
- Zone #41 (6 Students)
- Zone #42 (17 Students)
  - Coastal Club

## Love Creek to Rehoboth

- Zone #38 (15 Students)
  - The Retreat at Love Creek
- Zone #40 (6 Students)
  - Beachwoods
  - Welches Pond

# RECOMMENDATION

## School Choice

- Provide two (2) options for all out of district non-staff related school choice students currently attending Love Creek Elementary for the 2024-2025 school year
  1. Transition to their district/school of residence or
  2. Remain in the Cape Henlopen School District and attend H.O. Brittingham Elementary
    1. school within the district with fewer number of students
  
- Provide two (2) options for all in district non-staff related school choice students currently attending Love Creek Elementary for the 2024-2025 school year
  1. Transition to their school of residence in the Cape Henlopen School District or
  2. Attend H.O. Brittingham Elementary
    1. school within the district with fewer number of students

# RECOMMENDATION

## Residency Issues/Concerns

- Continue to investigate all concerns shared with district related to residency
- Conduct a residency audit of all remaining students to verify residency within the Love Creek Attendance Area.
  - Audit will occur between December of 2023 and June of 2024
  - All students found not residing in the Love Creek attendance area through this audit will not be permitted to remain at Love Creek beyond the 2023-2024 school year.



# INFORMATION RELATED TO PROOF OF RESIDENCY

- **Proof of Residency - Required for Enrollment**
  - If you own your home, the following documentation is required:
    - Current monthly utility bill in Parent/Guardian name (dated within the last 30 days), showing the same mailing and service address
  - If you rent or lease your home, the following documentation is required:
    - Current monthly utility bill in Parent/Guardian name (dated within the last 30 days), showing the same mailing and service address; or
    - A current fully executed lease from Realtor or Property Management company
      - Any other type of lease agreement requires a notarized Evidence of Residency form from the landlord along with a copy of a current monthly utility bill in the landlord's name
  - If you reside with a resident of the District, the following documentation is required:
    - Notarized Evidence of Residency form from the homeowner along with the homeowner's lease agreement or current monthly utility bill (dated within the last 30 days), showing the same mailing and service address

**QUESTIONS/COMMENTS**

**THANK YOU**