

LEA Name : Pottsville Area SD
Address : 1501 W Laurel Blvd
Pottsville , PA 17901

County : Schuylkill
AUN Number : 129546103
LEA Type : SD

Annual Financial Report Accuracy Certification Statement

For Fiscal Year Ending
6/30/2018

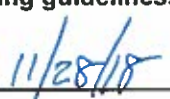
Pennsylvania Department of Education
&
Office of Comptroller Operations

PDE-2056: Intermediate Unit
PDE-2057: School District, AVTS/CTC, Charter School,
and Special Program Jointure

CERTIFICATION: By signing this page I agree that the electronic data submitted is a complete and accurate statement of the financial operations and status of the local education agency for the fiscal year. It has been prepared in accordance with generally accepted accounting principles and established Commonwealth of PA reporting guidelines.



Chief School Administrator Signature



Date



Board Secretary Signature



Date

Brian A Manning

Contact Person

(570)621-2904 Ext :

Contact Person Telephone Number

bmannings@pottsville.k12.pa.us

Contact Person E-mail Address

(570)621-2044

Contact Person Fax Number

No. 008

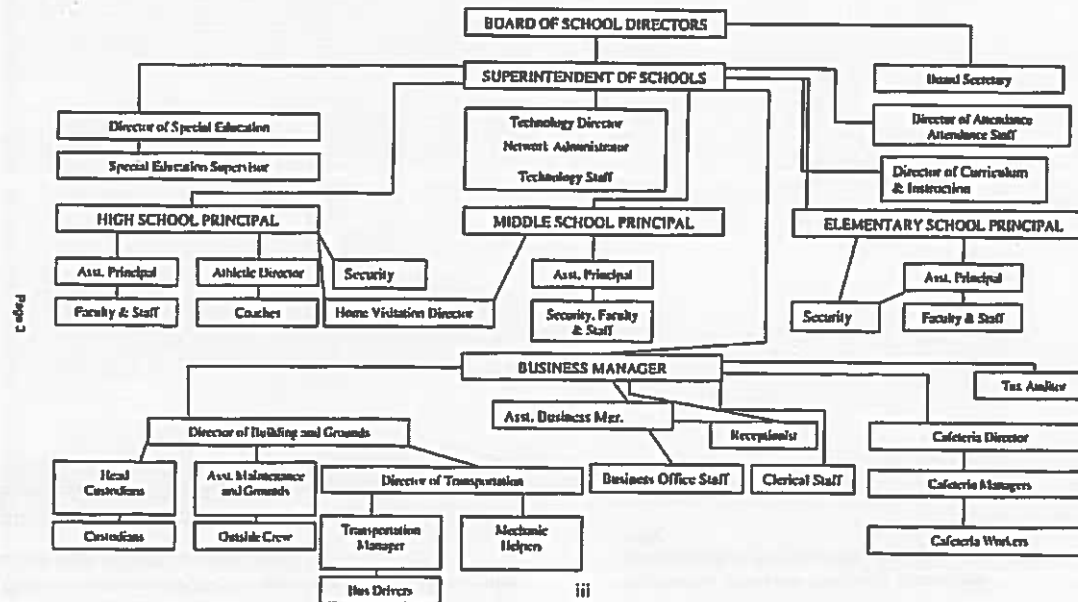
POTTSVILLE AREA SCHOOL DISTRICT

SECTION: LOCAL BOARD PROCEDURES

TITLE: ORGANIZATION CHART

ADOPTED: May 13, 2009

REVISED: August 21, 2013



<u>Val Number</u>	<u>Description</u>	<u>Justification</u>
30655	Revenue Detail: Current Tax Revenue amount cannot exceed 50% variance from prior year amount. Correct the data or enter a justification. 6143, Current AFR Rev Detail: \$82,366.82 6143, Prior AFR Rev Detail: \$46,973.25	Current year collections are greater than prior year collections.
42420	Expenditure Detail: Total current year 2700-513 expenditure varies from prior year by 10%. Correct the data or enter a justification. 2700-513, AFR Exp Detail: \$4,460.14 2700-513, PY AFR Amount: \$6,011.89	Number of students requiring contracted transportation services has declined from prior year.

Amounts Expressed in Whole Dollars	<u>General Fund</u> (10)	<u>Public Purpose Trust</u> (27)	<u>Other Compt Approved</u> (28)	<u>Athletic / Activity</u> (29)	<u>Capital Reserve (690,</u> <u>1850)</u> (31)
Assets And Deferred Outflows Of Resources					
Assets					
0100 Cash and Cash Equivalents	2,252,673				
0110 Investments					
0120 Taxes Receivable	2,993,830				
0130 Due From Other Funds					
0141 Due From Other Governments					
0142 State Revenue Receivable					
0143 Federal Revenue Receivable					
0145 Other Intergovernmental Revenue Receivable	2,172,788				
0146 Due from Primary Government					
0147 Due from Component Unit					
0150 Other Receivables	285,000				
0170 Inventories					
0180 Prepaid Expenses (Expenditures)					
0190 Other Current Assels					
Total Assets	\$7,704,291				
0910 Deferred Outflows of Resources					
Total Assets And Deferred Outflows Of Resources	\$7,704,291				

Amounts Expressed in Whole Dollars	<u>Capital Reserve (1431)</u> <u>(32)</u>	<u>Other Capital Projects</u> <u>Fund</u> <u>(39)</u>	<u>Debt Service</u> <u>(40)</u>	<u>Permanent</u> <u>(90)</u>	<u>Total Governmental</u> <u>Funds</u>
Assets And Deferred Outflows Of Resources					
Assets					
0100 Cash and Cash Equivalents	615,921	7			2,868,601
0110 Investments					
0120 Taxes Receivable					2,993,830
0130 Due From Other Funds					
0141 Due From Other Governments					
0142 State Revenue Receivable					
0143 Federal Revenue Receivable					
0145 Other Intergovernmental Revenue Receivable					2,172,788
0146 Due from Primary Government					
0147 Due from Component Unit					
0150 Other Receivables					285,000
0170 Inventories					
0180 Prepaid Expenses (Expenditures)					
0190 Other Current Assets					
Total Assets	\$615,921	\$7			\$8,320,219
0910 Deferred Outflows of Resources					
Total Assets And Deferred Outflows Of Resources	\$615,921	\$7			\$8,320,219

Amounts Expressed in Whole Dollars	<u>General Fund</u> (10)	<u>Public Purpose Trust</u> (27)	<u>Other Compt Approved</u> (28)	<u>Athletic / Activity</u> (29)	<u>Capital Reserve</u> (690, 1850) (31)
Liabilities And Deferred Inflows Of Resources And Fund Balances					
Liabilities					
0400 Due to Other Funds	83,590				
0411 Due to Other Governments					
0412 Due to Primary Government					
0413 Due to Component Unit					
0420 Accounts Payable	1,419,755				
0430 Contracts Payable					
0440 Current Portion of Long-Term Debt					
0450 Short-Term Payables					
0461 Accrued Salaries and Benefits	5,171,069				
0462 Payroll Deductions and Withholding					
0480 Unearned Revenues					
0490 Other Current Liabilities					
Total Liabilities	\$6,674,414				
0950 Deferred Inflows of Resources	2,253,413				
Fund Balances					
0810 Nonspendable Fund Balance					
0820 Restricted Fund Balance					
0830 Committed Fund Balance					
0840 Assigned Fund Balance					
0850 Unassigned Fund Balance	(1,223,536)				
Total Fund Balances	(\$1,223,536)				
Total Liabilities, Deferred Inflows Of Resources And Fund Balances	\$7,704,291				

Amounts Expressed in Whole Dollars	<u>Capital Reserve (1431)</u> <u>(32)</u>	<u>Other Capital Projects</u> <u>Fund</u> <u>(39)</u>	<u>Debt Service</u> <u>(40)</u>	<u>Permanent</u> <u>(90)</u>	<u>Total Governmental</u> <u>Funds</u>
Liabilities And Deferred Inflows Of Resources And Fund Balances					
Liabilities					
0400 Due to Other Funds					83,590
0411 Due to Other Governments					
0412 Due to Primary Government					
0413 Due to Component Unit					
0420 Accounts Payable					1,419,755
0430 Contracts Payable					
0440 Current Portion of Long-Term Debt					
0450 Short-Term Payables					
0461 Accrued Salaries and Benefits					5,171,069
0462 Payroll Deductions and Withholding					
0480 Unearned Revenues					
0490 Other Current Liabilities					
Total Liabilities					\$6,674,414
0950 Deferred Inflows of Resources					2,253,413
Fund Balances					
0810 Nonspendable Fund Balance					
0820 Restricted Fund Balance	615,921	7			615,928
0830 Committed Fund Balance					
0840 Assigned Fund Balance					
0850 Unassigned Fund Balance					(1,223,536)
Total Fund Balances	\$615,921	\$7			(\$607,608)
Total Liabilities, Deferred Inflows Of Resources And Fund Balances	\$615,921	\$7			\$8,320,219

Amounts Expressed in Whole Dollars	<u>General Fund</u> (10)	<u>Public Purpose Trust</u> (27)	<u>Other Compt Approved</u> (28)	<u>Athletic / Activity</u> (29)	<u>Capital Reserve (690,</u> <u>1850)</u> (31)
Revenues					
6000 Revenue from Local Sources	17,265,853				
7000 Revenue from State Sources	21,362,577				
8000 Revenue from Federal Sources	960,734				
Total Revenues	\$39,589,164				
Expenditures					
1000 Instruction	25,672,752				
2000 Support Services	11,465,281				
3000 Operation of Non-Instructional Services	1,086,342				
4000 Facilities Acquisition, Construction and Improvement Services	284,460				
5110 Debt Service	1,608,299				
5130 Refund of Prior Year Revenues / Receipts					
Total Expenditures	\$40,117,134				
Excess (Deficiency) Of Revenues Over Expenditures	(\$527,970)				
Other Financing Sources (Uses)					
9110 Face Value of Bonds Issued					
9120 Proceeds from Refunding of Bonds					
9130 Bond Premiums					
9200 Proceeds from Extended-Term Financing	285,000				
9300 Interfund Transfers - IN					
9400 Sale of or Compensation for Loss of Fixed Assets	234,500				
9710 Transfers from Component Units					
9720 Transfers from Primary Governments					
9910 Other Financing Sources Not Listed in the 9000 Series					
9990 Insurance Recoveries					
5120 Debt Service -- Refunded Bonds					
5150 Bond Discounts					
5200 Interfund Transfers - Out					
5300 Transfers Out to Component Units/Primary Governments					
Total Other Financing Sources (Uses)	\$519,500				

Amounts Expressed in Whole Dollars	<u>Capital Reserve (1431)</u> <u>(32)</u>	<u>Other Capital Projects</u> <u>Fund</u> <u>(39)</u>	<u>Debt Service</u> <u>(40)</u>	<u>Permanent</u> <u>(90)</u>	<u>Total Governmental</u> <u>Funds</u>
Revenues					
6000 Revenue from Local Sources	6,118				17,271,971
7000 Revenue from State Sources					21,362,577
8000 Revenue from Federal Sources					960,734
Total Revenues	\$6,118				\$39,595,282
Expenditures					
1000 Instruction					25,672,752
2000 Support Services					11,465,281
3000 Operation of Non-Instructional Services					1,086,342
4000 Facilities Acquisition, Construction and Improvement Services					284,460
5110 Debt Service					1,608,299
5130 Refund of Prior Year Revenues / Receipts					
Total Expenditures					\$40,117,134
Excess (Deficiency) Of Revenues Over Expenditures	\$6,118				(\$521,852)
Other Financing Sources (Uses)					
9110 Face Value of Bonds Issued					
9120 Proceeds from Refunding of Bonds					
9130 Bond Premiums					
9200 Proceeds from Extended-Term Financing					285,000
9300 Interfund Transfers - IN					
9400 Sale of or Compensation for Loss of Fixed Assets					234,500
9710 Transfers from Component Units					
9720 Transfers from Primary Governments					
9910 Other Financing Sources Not Listed in the 9000 Series					
9990 Insurance Recoveries					
5120 Debt Service – Refunded Bonds					
5150 Bond Discounts					
5200 Interfund Transfers – Out					
5300 Transfers Out to Component Units/Primary Governments					
Total Other Financing Sources (Uses)					\$519,500

Amounts Expressed in Whole Dollars	<u>General Fund</u> (10)	<u>Public Purpose Trust</u> (27)	<u>Other Compt Approved</u> (28)	<u>Athletic / Activity</u> (29)	<u>Capital Reserve</u> (690) <u>1850</u> (31)
Special And Extraordinary Items					
9920 Special Items – Gains					
9930 Extraordinary Items – Gains					
5520 Special Items – Losses					
5530 Extraordinary Items – Losses					
Net Change In Fund Balances	(\$8,470)				
Fund Balance					
0001 Fund Balance - Beginning of Fiscal Year	(1,215,066)				
Fund Balance - End Of Year	(\$1,223,536)				

Amounts Expressed in Whole Dollars	<u>Capital Reserve (1431)</u> (32)	<u>Other Capital Projects</u> <u>Fund</u> (39)	<u>Debt Service</u> (40)	<u>Permanent</u> (90)	<u>Total Governmental</u> <u>Funds</u>
Special And Extraordinary Items					
9920 Special Items – Gains					
9930 Extraordinary Items – Gains					
5520 Special Items – Losses					
5530 Extraordinary Items – Losses					
Net Change In Fund Balances	\$6,118				(\$2,352)
Fund Balance					
0001 Fund Balance - Beginning of Fiscal Year	609,803	7			(605,256)
Fund Balance - End Of Year	\$615,921	\$7			(\$607,608)

Amounts Expressed in Whole Dollars	<u>Food Service</u> <u>(51)</u>	<u>Child Care</u> <u>Operations</u> <u>(52)</u>	<u>Other Enterprise</u> <u>(58)</u>	<u>TOTAL</u>	<u>Internal Service</u> <u>(60)</u>
Assets And Deferred Outflows Of Resources					
Current Assets					
0100 Cash and Cash Equivalents	88,257			88,257	
0110 Investments					
0130 Due From Other Funds	83,590			83,590	
0141 Due From Other Governments					
0142 State Revenue Receivable					
0143 Federal Revenue Receivable					
0146 Due from Primary Government					
0147 Due from Component Unit					
0150 Other Receivables	27,818			27,818	
0170 Inventories	48,786			48,786	
0180 Prepaid Expenses (Expenditures)					
0190 Other Current Assets					
Total Current Assets	\$248,451			\$248,451	
Noncurrent Assets					
0211 Land					
0212 Site Improvements (Net)					
0220 Buildings and Building Improvements (Net)					
0230 Machinery, Equipment and Furniture (Net)	12,532			12,532	
0250 Construction in Progress					
0260 Long Term Prepayments					
0290 Other Noncurrent Assets					
Total Noncurrent Assets	\$12,532			\$12,532	
0910 Deferred Outflows of Resources					
Total Assets And Deferred Outflows Of Resources	\$260,983			\$260,983	

Amounts Expressed in Whole Dollars	<u>Food Service</u> (51)	<u>Child Care</u> <u>Operations</u> (52)	<u>Other Enterprise</u> (58)	<u>TOTAL</u>	<u>Internal Service</u> (60)
Liabilities And Deferred Inflows Of Resources And Net Position					
Current Liabilities					
0400 Due to Other Funds					
0411 Due to Other Governments					
0413 Due to Component Unit					
0420 Accounts Payable	16,284			16,284	
0430 Contracts Payable					
0440 Current Portion of Long-Term Debt					
0450 Short-Term Payables					
0461 Accrued Salaries and Benefits	118,195			118,195	
0462 Payroll Deductions and Withholding					
0480 Unearned Revenues					
0490 Other Current Liabilities					
Total Current Liabilities	\$134,479			\$134,479	
Noncurrent Liabilities					
0510 Bonds Payable					
0520 Extended-Term Financing Agreements Payable					
0530 Lease-Purchase Obligations					
0540 Accumulated Compensated Absences	9,588			9,588	
0550 Authority Lease Obligations					
0560 Other Post-Employment Benefits (OPEB)					
0570 Net Pension Liability					
0599 Other Noncurrent Liabilities					
Total Noncurrent Liabilities	\$9,588			\$9,588	
Total Liabilities	\$144,067			\$144,067	
0950 Deferred Inflows of Resources	53,631			53,631	
Net Position					
0791 Net Investment in Capital Assets	12,532			12,532	
0008 Restricted Net Position (0792 – 0798)					
0799 Unrestricted Net Position	50,753			50,753	
Total Net Position	\$63,285			\$63,285	
Total Liabilities And Deferred Inflows Of Resources And Net Position	\$260,983			\$260,983	

Amounts Expressed in Whole Dollars	<u>Food Service</u> (51)	<u>Child Care Operations</u> (52)	<u>Other Enterprise</u> (58)	<u>TOTAL</u>	<u>Internal Service</u> (60)
Operating Revenues					
6600 Food Service Revenue	536,042			536,042	
0071 Charges for Services					
0072 Other Operating Revenue	1,361			1,361	
Total Operating Revenues	\$537,403			\$537,403	
Operating Expenses					
100 Personnel Services – Salaries	680,737			680,737	
200 Personnel Services – Employee Benefits	491,703			491,703	
300 Purchased Professional and Technical Services					
400 Purchased Property Services	12,036			12,036	
500 Other Purchased Services					
600 Supplies	642,151			642,151	
740 Depreciation	1,177			1,177	
810 Dues and Fees					
890 Miscellaneous Expenditures	181			181	
Total Operating Expenses	\$1,827,985			\$1,827,985	
Operating Income (Loss)	(\$1,290,582)			(\$1,290,582)	
Non Operating Revenues (Expenses)					
6500 Earnings on Investments		6		6	
6920 Contributions and Donations from Private Sources					
6930 Gains or Losses on Sale of Fixed Assets					
6991 Refunds of a Prior Year Expenditure					
7000 Revenue from State Sources	233,983			233,983	
8000 Revenue from Federal Sources	1,053,173			1,053,173	
820 Claims and Judgments Against the LEA					
830 Interest					
TOTAL Non Operating Revenues (Expenses)	\$1,287,162			\$1,287,162	
Income (Loss) Before Contributions And Transfers	(\$3,420)			(\$3,420)	

Amounts Expressed in Whole Dollars	<u>Food Service</u> (51)	<u>Child Care Operations</u> (52)	<u>Other Enterprise</u> (58)	<u>TOTAL</u>	<u>Internal Service</u> (60)
Contributions, Transfers, and Special and Extraordinary Items					
5200 Interfund Transfers – Out					
5300 Transfers Out to Component Units/Primary Governments					
5520 Special Items – Losses					
5530 Extraordinary Items – Losses					
9300 Interfund Transfers - IN					
9500 Capital Contributions					
9700 Transfers IN From Component Units/Primary Governments					
9920 Special Items – Gains					
9930 Extraordinary Items – Gains					
Change In Net Position	(\$3,420)			(\$3,420)	
0002 Net Position - Beginning of Fiscal Year	66,705			66,705	
0003 Accounting Changes / Residual Equity Transfers					
Net Position - End Of Year	\$63,285			\$63,285	

Amounts Expressed in Whole Dollars	<u>Food Service</u> (51)	<u>Child Care Operations</u> (52)	<u>Other Enterprise</u> (58)	<u>TOTAL</u>	<u>Internal Service(60)</u>
Cash Flows From Operating Activities					
0011 Cash Receipts From Users	537,403			537,403	
0012 Cash Receipts From Assessments Made to Other Funds					
0013 Cash Receipts From Earnings on Investments					
0014 Cash Receipts From Other Operating Revenue					
0015 Cash Payments To Employees For Services	1,172,440			1,172,440	
0016 Cash Payments For Insurance Claims	655,433			655,433	
0017 Cash Payments To Suppliers For Goods and Services					
0018 Cash Payments For Other Operating Expenses					
Net Cash Provided By (Used For) Operating Activities	(\$1,290,470)			(\$1,290,470)	
Cash Flows From Non-Capital Financing Activities					
0021 Receipts From Local Sources - 6000					
0022 Receipts From State Sources - 7000	233,983			233,983	
0023 Receipts From Federal Sources -8000	1,053,173			1,053,173	
0024 Notes and Loans Received (Repaid)	(1,912)			(1,912)	
0025 Interest Paid on Notes/Loans - 5100-830					
0026 Operating Transfers In (Out)/Residual Equity Trans					
0027 Operating Transfers In (Out) Primary Government / Comp Unit					
0028 Receipts From Refund of Prior Year Expenditures - 6991					
0029 Special and Extraordinary Gains (losses)					
0030 Receipts from Insurance Recoveries -9990					
Net Cash Prov By (Used for) Non-Capital Financing Activities	\$1,285,244			\$1,285,244	
Cash Flows From Capital and Related Financing Activities					
0031 Payments For Fac Acq, Const, and Imp - 4000					
0032 Gain / (Loss) on Sale of Fixed Assets - 6930	(11,818)			(11,818)	
0033 Proceeds From Extended Term Financing - 9200					
0034 Principal Paid on Financing Agreements					
0035 Interest Paid on Financing Agreements - 5100-830					
0036 (Inc) Dec in Contributed Capital					
Net Cash Prov By (Used for) Capital and Related Financing Activities	(\$11,818)			(\$11,818)	
Cash Flows From Investing Activities					
0041 Earnings on Investments - 6500	6			6	
0042 Purchase of Inv Securities / Deposits to Inv Pools					
0043 Receipts From Investment Pool Withdrawals					
0044 Proceeds from Sale and Maturity of Inv Securities					

0045 Loans Received (Paid)

Net Cash Prov By (Used for) Investing Activities	\$6	\$6
--	-----	-----

	<u>Food Service</u> (51)	<u>Child Care Operations</u> (52)	<u>Other Enterprise</u> (58)	<u>TOTAL</u>	<u>Internal Service</u> (60)
Net Increase (Decrease) in Cash Flows	(17,038)			(17,038)	
0004 Cash and Cash Equivalents Beginning of Year	105,295			105,295	
Cash and Cash Equivalents at Year End	\$88,257			\$88,257	
Reconciliation of Operating Income (Loss) To Net Cash Provided by (Used For) Operating Activities					
0005 Operating Income (Loss) per REP	(1,290,582)			(1,290,582)	
Adjustments					
0051 Depreciation and Net Amortization	1,177			1,177	
0052 Provision for Uncollectible Accounts					
0053 Other Adjustments					
Effect of Changes in Assets, Liabilities, Deferred Outflows and Deferred Inflows					
0054 (Inc) Dec In Accounts Receivable (0120-0150)	(9,722)			(9,722)	
0055 Advances to Other Funds (0160)	(44,605)			(44,605)	
0056 (Inc) Dec in Inventories (0170)	(14,519)			(14,519)	
0057 (Inc) Dec in Prepaid Expenses (0180)					
0058 (Inc) Dec in Other Current or Noncurrent Assets					
0064 Deferred Outflows (0910)					
0059 Inc (Dec) in Accounts Payable (0400-0450)	(6,882)			(6,882)	
0060 Inc (Dec) in Accrued Salaries/Benefits (0461)	59,419			59,419	
0065 Inc (Dec) in Net Pension Liabilities (0570)					
0066 Inc (Dec) in Other Postemp Benefit Oblig (0560)					
0061 Inc (Dec) in Payroll Deductions/Withholding (0462)					
0062 Inc (Dec) in Unearned Revenue (0480)	15,244			15,244	
0063 Inc (Dec) in Other Current or Noncurrent Liabilities					
0067 Deferred Inflows (0950)					
Total Adjustments	\$112			\$112	
Cash Provided By (Used for) Total	(\$1,290,470)			(\$1,290,470)	

COMBINED STATEMENT OF CASH FLOWS
SCHEDULE OF NONCASH INVESTING, CAPITAL, AND FINANCING ACTIVITIES

Explanation of Transaction and Balance Sheet Effect	Amount
Total	

Amounts Expressed in Whole Dollars	<u>Private Purpose Trust</u> (71)	<u>Investment Trust</u> (72)	<u>Pension Trust</u> (73)	<u>Activity</u> (81)
Assets And Deferred Outflows Of Resources				
Assets				
0100 Cash and Cash Equivalents	827,861			436,219
0110 Investments				
0130 Due From Other Funds				
0147 Due from Component Unit				
0150 Other Receivables				
0170 Inventories				
0180 Prepaid Expenses (Expenditures)				
0190 Other Current Assets				
0220 Buildings and Building Improvements (Net)				
0230 Machinery, Equipment and Furniture (Net)				
Total Assets	\$827,861			\$436,219
0910 Deferred Outflows of Resources				
Total Assets And Deferred Outflows Of Resources	\$827,861			\$436,219

Amounts Expressed in Whole Dollars	<u>Other Agency</u> (89)	<u>Discrete Component Units</u> (98)	<u>Discrete Component Units</u> (99)	<u>Total Fiduciary Funds</u>
Assets And Deferred Outflows Of Resources				
Assets				
0100 Cash and Cash Equivalents				1,264,080
0110 Investments				
0130 Due From Other Funds				
0147 Due from Component Unit				
0150 Other Receivables				
0170 Inventories				
0180 Prepaid Expenses (Expenditures)				
0190 Other Current Assets				
0220 Buildings and Building Improvements (Net)				
0230 Machinery, Equipment and Furniture (Net)				
Total Assets				\$1,264,080
0910 Deferred Outflows of Resources				
Total Assets And Deferred Outflows Of Resources				\$1,264,080

Amounts Expressed in Whole Dollars	<u>Private Purpose Trust</u> (71)	<u>Investment Trust</u> (72)	<u>Pension Trust</u> (73)	<u>Activity</u> (81)
Liabilities, Deferred Inflows Of Resources And Net Position				
Liabilities				
0400 Due to Other Funds				
0411 Due to Other Governments				
0412 Due to Primary Government				
0413 Due to Component Unit				
0420 Accounts Payable				
0430 Contracts Payable				
0450 Short-Term Payables				
0461 Accrued Salaries and Benefits				
0462 Payroll Deductions and Withholding				
0480 Unearned Revenues				
0490 Other Current Liabilities				436,219
Total Liabilities				\$436,219
0950 Deferred Inflows of Resources				
Net Position				
0791 Net Investment in Capital Assets				
0009 Restricted Net Position (0792 – 0798)				
0799 Unrestricted Net Position	827,861			
Total Net Position	\$827,861			
Total Liabilities, Deferred Inflows Of Resources And Net Position	\$827,861			\$436,219

Amounts Expressed in Whole Dollars	<u>Other Agency</u> <u>(89)</u>	<u>Discrete Component Units</u> <u>(98)</u>	<u>Discrete Component Units</u> <u>(99)</u>	<u>Total Fiduciary Funds</u>
Liabilities, Deferred Inflows Of Resources And Net Position				
Liabilities				
0400 Due to Other Funds				
0411 Due to Other Governments				
0412 Due to Primary Government				
0413 Due to Component Unit				
0420 Accounts Payable				
0430 Contracts Payable				
0450 Short-Term Payables				
0461 Accrued Salaries and Benefits				
0462 Payroll Deductions and Withholding				
0480 Unearned Revenues				
0490 Other Current Liabilities				436,219
Total Liabilities				\$436,219
0950 Deferred Inflows of Resources				
Net Position				
0791 Net Investment in Capital Assets				
0009 Restricted Net Position (0792 – 0798)				
0799 Unrestricted Net Position				827,861
Total Net Position				\$827,861
Total Liabilities, Deferred Inflows Of Resources And Net Position				\$1,264,080

Amounts Expressed in Whole Dollars	<u>Private Purpose Trust</u> (71)	<u>Investment Trust</u> (72)	<u>Pension Trust</u> (73)	<u>Discrete Component</u> <u>Units</u> (98)	<u>Discrete Component</u> <u>Units</u> (99)	<u>Total Fiduciary</u> <u>Funds</u>
Additions						
0091 Gifts and Contributions	151,319					151,319
0092 Other Additions	2,548					2,548
Deductions						
0093 Scholarships Awarded	98,472					98,472
0094 Other Deductions						
Change in Net Position	\$55,395					\$55,395
0006 Net Position – Beginning of Fiscal Year	772,466					772,466
0007 Net Position Held in Trust for Pension Benefits						
Net Position - End of Fiscal Year	\$827,861					\$827,861

	<u>Revenue Reported In Current Year</u>	<u>Current Year Tax Accrual</u>	<u>Prior Year Tax Accrual</u>	<u>Taxes Collected In Current Year</u>
<u>Revenue from Local Sources</u>				
6111 Current Real Estate Taxes	9,483,954.53			9,483,954.53
6113 Public Utility Realty Taxes	13,270.82			13,270.82
6114 Payments in Lieu of Current Taxes - State / Local	32,984.18			32,984.18
6120 Current Per Capita Taxes, Section 679	36,552.95			36,552.95
6141 Current Act 511 Per Capita Taxes	36,548.05			36,548.05
6143 Current Act 511 Local Services Taxes	84,912.03	14,829.06	12,283.85	82,366.82
6151 Current Act 511 Earned Income Taxes	1,643,062.81	343,294.95	357,074.64	1,656,842.50
6152 Current Act 511 Occupation Taxes	439,938.94			439,938.94
6153 Current Act 511 Real Estate Transfer Taxes	151,165.05	12,547.07	8,103.29	146,721.27
6155 Current Act 511 Business Privilege Taxes	1,064,929.33	105,451.34	54,623.96	1,014,101.95
6411 Delinquent Real Estate Taxes	966,211.86	122,177.60	280,103.37	1,124,137.63
6420 Delinquent Per Capita Taxes, Section 679	18,993.18			18,993.18
6440 Delinquent Local Enabling Taxes - Flat Rate Assessments	23,889.98			23,889.98
6451 Delinquent Act 511 Earned Income Taxes	24,876.05			24,876.05
6452 Delinquent Act 511 Occupation Taxes	404,499.48	35,418.46	56,212.17	425,293.19
6455 Delinquent Act 511 Business Privilege Taxes	536.13			536.13
6500 Earnings on Investments	9,395.54			
6700 Revenues from LEA Activities	243,862.26			
6832 Federal IDEA Revenue Received as Pass Through	493,474.00			
6910 Rentals	24,232.76			
6920 Contributions and Donations from Private Sources	89,793.11			
6941 Regular Day School Tuition	1,153.00			
6944 Receipts from Other LEAs in Pennsylvania - Education	1,829,757.38			
6961 Transportation Services Provided Other Pennsylvania LEAs	19,582.00			
6970 Services Provided Other Funds	2,082.56			
6991 Refunds of a Prior Year Expenditure	47,388.97			
6992 Energy Efficiency Revenues and Incentives	3,727.51			
6999 Other Revenues Not Specified Above	75,078.46			
TOTAL Revenue from Local Sources	\$17,265,852.92	\$633,718.48	\$768,401.28	\$14,561,008.17

	Revenue Reported In Current Year			
<u>Revenue from State Sources</u>				
7110 Basic Education Funding	13,342,595.43			
7160 Tuition for Orphans Subsidy	50,551.67			
7271 Special Education funds for School-Aged Pupils	1,786,758.60			
7311 Pupil Transportation Subsidy	559,702.63			
7312 Nonpublic and Charter School Pupil Transportation Subsidy	48,895.00			
7330 Health Services (Medical, Dental, Nurse, Act 25)	57,288.01			
7340 State Property Tax Reduction Allocation	704,067.17			
7360 Safe Schools	20,000.00			
7505 Ready to Learn Block Grant	488,569.00			
7810 State Share of Social Security and Medicare Taxes	773,081.00			
7820 State Share of Retirement Contributions	3,531,068.36			
TOTAL Revenue from State Sources	\$21,362,576.87			

	Revenue Reported In Current Year
<u>Revenue from Federal Sources</u>	
8514 NCLB, Title I - Improving the Academic Achievement of the Disadvantaged	564,124.74
8515 NCLB, Title II - Preparing, Training and Recruiting High Quality Teachers and Principals	84,307.82
8517 NCLB, Title IV - 21st Century Schools	55,714.18
8810 School-Based Access Medicaid Reimbursement Program (SBAP) Reimbursements (Access)	231,216.62
8820 Medical Assistance Reimbursement for Administrative Claiming (Quarterly) Program	25,370.93
TOTAL Revenue from Federal Sources	\$960,734.29

	Revenue Reported In Current Year			
<u>Other Financing Sources</u>				
9290 Other Extended-Term Financing Proceeds	285,000.00			
9400 Sale of or Compensation for Loss of Fixed Assets	234,500.00			
TOTAL Other Financing Sources	\$519,500.00			
TOTAL FROM ALL SOURCES	\$40,108,664.08	\$633,718.48	\$768,401.28	\$14,561,008.17

Revenue from Local Sources	17,265,852.92
Revenue from State Sources	21,362,576.87
Revenue from Federal Sources	960,734.29
Other Financing Sources	519,500.00
TOTAL FROM ALL SOURCES	\$40,108,664.08

General Fund (10)

	<u>Total</u>
1000 Instruction	
100 Personnel Services – Salaries	
100 Personnel Services – Salaries	11,441,598.51
Total Personnel Services – Salaries	\$11,441,598.51
200 Personnel Services – Employee Benefits	
210 Group Insurance – Contracted Provider	3,697,963.97
220 Social Security Contributions	859,674.65
230 PSERS Retirement Contributions	3,725,009.08
250 Unemployment Compensation	17,246.69
260 Workers' Compensation	68,249.84
270 Group Insurance – Self-Insurance	(28,756.19)
280 Other Post-Employment Benefits (OPEB)	293,007.71
Total Personnel Services – Employee Benefits	\$8,632,395.75
300 Purchased Professional and Technical Services	
322 Professional Educational Services – lus	1,171,987.20
329 Professional Educational Services – Other	329,196.60
330 Other Professional Services	83,871.72
390 Other Purchased Professional and Technical Services	42,908.46
Total Purchased Professional and Technical Services	\$1,627,963.98
400 Purchased Property Services	
430 Repairs and Maintenance Services	8,222.63
440 Rentals	19,506.41
Total Purchased Property Services	\$27,729.04
500 Other Purchased Services	
530 Communications	257.95
561 Tuition To Other School Districts Within the State	319,832.77
562 Tuition To Pennsylvania Charter Schools	2,386,395.19
564 Tuition To Career and Technology Centers	864,738.00
568 Tuition To Private Residential Rehabilitative Institutions (PRRI) [In-State] and Detention Centers	69,082.14
569 Tuition – Other	76,856.85
580 Travel	137.89
Total Other Purchased Services	\$3,717,300.79
600 Supplies	
610 General Supplies	116,556.90
640 Books and Periodicals	79,919.39
650 Supplies & Fees – Technology Related	13,586.57
Total Supplies	\$210,062.86
700 Property	
752 Capital Equipment – Original and Additional	9,798.99
Total Property	\$9,798.99
800 Other Objects	
810 Dues and Fees	5,902.45

General Fund (10)

1000 Instruction

	<u>Total</u>
Total Other Objects	\$5,902.45
Total 1000 Instruction	\$25,672,752.37

General Fund (10)

	<u>Elementary</u>	<u>Secondary</u>	<u>Federal</u>	<u>Total</u>
1100 Regular Programs – Elementary / Secondary				
100 Personnel Services – Salaries				
100 Personnel Services – Salaries	3,523,147.37	3,966,920.98	416,319.85	7,906,388.20
Total Personnel Services – Salaries	\$3,523,147.37	\$3,966,920.98	\$416,319.85	\$7,906,388.20
200 Personnel Services – Employee Benefits				
210 Group Insurance – Contracted Provider	1,196,849.82	1,160,206.98	125,862.85	2,482,919.65
220 Social Security Contributions	265,379.36	298,481.72	31,628.31	595,489.39
230 PSERS Retirement Contributions	1,159,713.25	1,283,420.69	136,401.51	2,579,535.45
250 Unemployment Compensation	4,576.36	5,727.82		10,304.18
260 Workers' Compensation	18,770.86	26,460.12		45,230.98
270 Group Insurance – Self-Insurance	(14,183.51)	(13,365.48)		(27,548.99)
280 Other Post-Employment Benefits (OPEB)	123,374.76	123,374.77		246,749.53
Total Personnel Services – Employee Benefits	\$2,754,480.90	\$2,884,306.62	\$293,892.67	\$5,932,680.19
300 Purchased Professional and Technical Services				
322 Professional Educational Services – Ius	2,665.00	6,110.00	46,315.50	55,090.50
329 Professional Educational Services – Other	175,705.68	153,490.92		329,196.60
330 Other Professional Services	200.00		5,970.00	6,170.00
390 Other Purchased Professional and Technical Services			42,908.46	42,908.46
Total Purchased Professional and Technical Services	\$178,570.68	\$159,600.92	\$95,193.96	\$433,365.56
400 Purchased Property Services				
430 Repairs and Maintenance Services	592.81	7,629.82		8,222.63
440 Rentals	13,509.32	5,650.94		19,160.26
Total Purchased Property Services	\$14,102.13	\$13,280.76		\$27,382.89
500 Other Purchased Services				
530 Communications		225.00	32.95	257.95
562 Tuition To Pennsylvania Charter Schools	1,187,792.05	1,198,603.14		2,386,395.19
568 Tuition To Private Residential Rehabilitative Institutions (PRRI) [In-State] and Detention Centers	34,541.07	34,541.07		69,082.14
Total Other Purchased Services	\$1,222,333.12	\$1,233,369.21	\$32.95	\$2,455,735.28
600 Supplies				
610 General Supplies	42,334.07	50,259.61	14,220.24	106,813.92
640 Books and Periodicals	55,909.78	1,750.45	132.10	57,792.33
650 Supplies & Fees – Technology Related		500.00	1,559.25	2,059.25
Total Supplies	\$98,243.85	\$52,510.06	\$15,911.59	\$166,665.50
700 Property				
752 Capital Equipment – Original and Additional	900.00	8,898.99		9,798.99
Total Property	\$900.00	\$8,898.99		\$9,798.99
800 Other Objects				
810 Dues and Fees	68.00	4,822.45		4,890.45
Total Other Objects	\$68.00	\$4,822.45		\$4,890.45
Total 1100 Regular Programs – Elementary / Secondary	\$7,791,846.05	\$8,323,709.99	\$821,351.02	\$16,936,907.06

General Fund (10)

	Elementary	Secondary	Federal	Total
1110 Regular Programs				
100 Personnel Services – Salaries				
100 Personnel Services – Salaries	3,523,147.37	3,966,920.98		7,490,068.35
Total Personnel Services – Salaries	\$3,523,147.37	\$3,966,920.98		\$7,490,068.35
200 Personnel Services – Employee Benefits				
210 Group Insurance – Contracted Provider	1,196,849.82	1,160,206.98		2,357,056.80
220 Social Security Contributions	265,379.36	298,481.72		563,861.08
230 PSERS Retirement Contributions	1,159,713.25	1,283,420.69		2,443,133.94
250 Unemployment Compensation	4,576.36	5,727.82		10,304.18
260 Workers' Compensation	18,770.86	26,460.12		45,230.98
270 Group Insurance – Self-Insurance	(14,183.51)	(13,365.48)		(27,548.99)
280 Other Post-Employment Benefits (OPEB)	123,374.76	123,374.77		246,749.53
Total Personnel Services – Employee Benefits	\$2,754,480.90	\$2,884,306.62		\$5,638,787.52
300 Purchased Professional and Technical Services				
322 Professional Educational Services – Ius	2,665.00	6,110.00	46,315.50	55,090.50
329 Professional Educational Services – Other	175,705.68	153,490.92		329,196.60
330 Other Professional Services	200.00			200.00
Total Purchased Professional and Technical Services	\$178,570.68	\$159,600.92	\$46,315.50	\$384,487.10
400 Purchased Property Services				
430 Repairs and Maintenance Services	592.81	7,629.82		8,222.63
440 Rentals	13,509.32	5,650.94		19,160.26
Total Purchased Property Services	\$14,102.13	\$13,280.76		\$27,382.89
500 Other Purchased Services				
530 Communications		225.00		225.00
562 Tuition To Pennsylvania Charter Schools	1,187,792.05	1,198,603.14		2,386,395.19
568 Tuition To Private Residential Rehabilitative Institutions (PRRI) [In-State] and Detention Centers	34,541.07	34,541.07		69,082.14
Total Other Purchased Services	\$1,222,333.12	\$1,233,369.21		\$2,455,702.33
600 Supplies				
610 General Supplies	42,334.07	50,259.61		92,593.68
640 Books and Periodicals	55,909.78	1,750.45		57,660.23
650 Supplies & Fees – Technology Related		500.00		500.00
Total Supplies	\$98,243.85	\$52,510.06		\$150,753.91
700 Property				
752 Capital Equipment – Original and Additional	900.00	8,898.99		9,798.99
Total Property	\$900.00	\$8,898.99		\$9,798.99
800 Other Objects				
810 Dues and Fees	68.00	4,822.45		4,890.45
Total Other Objects	\$68.00	\$4,822.45		\$4,890.45
Total 1110 Regular Programs	\$7,791,846.05	\$8,323,709.99	\$46,315.50	\$16,161,871.54

General Fund (10)

	<u>Elementary</u>	<u>Secondary</u>	<u>Federal</u>	<u>Total</u>
1190 Federally-Funded Regular Programs				
100 Personnel Services – Salaries				
100 Personnel Services – Salaries			416,319.85	416,319.85
Total Personnel Services – Salaries			\$416,319.85	\$416,319.85
200 Personnel Services – Employee Benefits				
210 Group Insurance – Contracted Provider			125,862.85	125,862.85
220 Social Security Contributions			31,628.31	31,628.31
230 PSERS Retirement Contributions			136,401.51	136,401.51
Total Personnel Services – Employee Benefits			\$293,892.67	\$293,892.67
300 Purchased Professional and Technical Services				
330 Other Professional Services			5,970.00	5,970.00
390 Other Purchased Professional and Technical Services			42,908.46	42,908.46
Total Purchased Professional and Technical Services			\$48,878.46	\$48,878.46
500 Other Purchased Services				
530 Communications			32.95	32.95
Total Other Purchased Services			\$32.95	\$32.95
600 Supplies				
610 General Supplies			14,220.24	14,220.24
640 Books and Periodicals			132.10	132.10
650 Supplies & Fees – Technology Related			1,559.25	1,559.25
Total Supplies			\$15,911.59	\$15,911.59
Total 1190 Federally-Funded Regular Programs			\$775,035.52	\$775,035.52

General Fund (10)

	<u>Elementary</u>	<u>Secondary</u>	<u>Federal</u>	<u>Total</u>
1200 Special Programs – Elementary / Secondary				
100 Personnel Services – Salaries				
100 Personnel Services – Salaries	1,736,300.49	1,463,316.27		3,199,616.76
Total Personnel Services – Salaries	\$1,736,300.49	\$1,463,316.27		\$3,199,616.76
200 Personnel Services – Employee Benefits				
210 Group Insurance – Contracted Provider	567,773.16	514,535.82		1,082,308.98
220 Social Security Contributions	130,323.00	108,558.72		238,881.72
230 PSERS Retirement Contributions	566,411.19	469,759.71		1,036,170.90
250 Unemployment Compensation	4,122.29	2,564.95		6,687.24
260 Workers' Compensation	10,272.59	10,319.11		20,591.70
270 Group Insurance – Self-Insurance	(338.15)	239.89		(98.26)
280 Other Post-Employment Benefits (OPEB)	15,579.06	15,579.07		31,158.13
Total Personnel Services – Employee Benefits	\$1,294,143.14	\$1,121,557.27		\$2,415,700.41
300 Purchased Professional and Technical Services				
322 Professional Educational Services – Jus	113,775.94	378,371.22	456,881.21	949,028.37
330 Other Professional Services	53,143.96	24,557.76		77,701.72
Total Purchased Professional and Technical Services	\$166,919.90	\$402,928.98	\$456,881.21	\$1,026,730.09
500 Other Purchased Services				
561 Tuition To Other School Districts Within the State	43,932.38	180,738.63		224,671.01
569 Tuition – Other	1,591.35	22,492.85		24,084.20
580 Travel		137.89		137.89
Total Other Purchased Services	\$45,523.73	\$203,369.37		\$248,893.10
600 Supplies				
610 General Supplies	4,588.79	3,945.29		8,534.08
640 Books and Periodicals	8,149.21	7,120.89	157.96	15,428.06
650 Supplies & Fees – Technology Related	1,650.00	2,149.00	7,728.32	11,527.32
Total Supplies	\$14,388.00	\$13,215.18	\$7,886.28	\$35,489.46
800 Other Objects				
810 Dues and Fees	664.12	347.88		1,012.00
Total Other Objects	\$664.12	\$347.88		\$1,012.00
Total 1200 Special Programs – Elementary / Secondary	\$3,257,939.38	\$3,204,734.95	\$464,767.49	\$6,927,441.82

General Fund (10)

	<u>Elementary</u>	<u>Secondary</u>	<u>Federal</u>	<u>Total</u>
1210 Life Skills Support				
100 Personnel Services – Salaries				
100 Personnel Services – Salaries	150,452.98	324,379.43		474,832.41
Total Personnel Services – Salaries	\$150,452.98	\$324,379.43		\$474,832.41
200 Personnel Services – Employee Benefits				
210 Group Insurance – Contracted Provider	48,750.16	79,536.36		128,286.52
220 Social Security Contributions	11,412.24	24,688.18		36,100.42
230 PSERS Retirement Contributions	50,991.04	105,150.05		156,141.09
250 Unemployment Compensation	149.93	95.84		245.77
260 Workers' Compensation	880.45	953.87		1,834.32
270 Group Insurance – Self-Insurance	214.34	214.34		428.68
Total Personnel Services – Employee Benefits	\$112,398.16	\$210,638.64		\$323,036.80
600 Supplies				
610 General Supplies	641.89	1,775.00		2,416.89
640 Books and Periodicals	59.48	59.47		118.95
650 Supplies & Fees – Technology Related		499.00		499.00
Total Supplies	\$701.37	\$2,333.47		\$3,034.84
Total 1210 Life Skills Support	\$263,552.51	\$537,351.54		\$800,904.05

General Fund (10)

	<u>Elementary</u>	<u>Secondary</u>	<u>Federal</u>	<u>Total</u>
1220 Sensory Support				
100 <u>Personnel Services – Salaries</u>				
100 Personnel Services – Salaries	216,486.03	62,614.47		279,100.50
Total Personnel Services – Salaries	\$216,486.03	\$62,614.47		\$279,100.50
200 <u>Personnel Services – Employee Benefits</u>				
210 Group Insurance – Contracted Provider	64,298.23	11,126.88		75,425.11
220 Social Security Contributions	16,241.13	4,703.79		20,944.92
230 PSERS Retirement Contributions	69,183.94	20,393.56		89,577.50
250 Unemployment Compensation	157.92	81.35		239.27
260 Workers' Compensation	723.11	452.31		1,175.42
Total Personnel Services – Employee Benefits	\$150,604.33	\$36,757.89		\$187,362.22
300 <u>Purchased Professional and Technical Services</u>				
330 Other Professional Services	3,625.00			3,625.00
Total Purchased Professional and Technical Services	\$3,625.00			\$3,625.00
600 <u>Supplies</u>				
610 General Supplies	2,682.98	1,705.00		4,387.98
Total Supplies	\$2,682.98	\$1,705.00		\$4,387.98
800 <u>Other Objects</u>				
810 Dues and Fees	664.12	347.88		1,012.00
Total Other Objects	\$664.12	\$347.88		\$1,012.00
Total 1220 Sensory Support	\$374,062.46	\$101,425.24		\$475,487.70

General Fund (10)

	<u>Elementary</u>	<u>Secondary</u>	<u>Federal</u>	<u>Total</u>
1230 Emotional Support				
100 Personnel Services – Salaries				
100 Personnel Services – Salaries	478,206.39	256,983.05		735,189.44
Total Personnel Services – Salaries	\$478,206.39	\$256,983.05		\$735,189.44
200 Personnel Services – Employee Benefits				
210 Group Insurance – Contracted Provider	199,480.50	66,171.58		265,652.08
220 Social Security Contributions	35,941.23	19,361.50		55,302.73
230 PSERS Retirement Contributions	155,095.24	83,598.16		238,693.40
250 Unemployment Compensation	527.35	316.74		844.09
260 Workers' Compensation	1,667.83	1,689.03		3,356.86
270 Group Insurance – Self-Insurance	1,840.81	5,966.82		7,807.63
Total Personnel Services – Employee Benefits	\$394,552.96	\$177,103.83		\$571,656.79
300 Purchased Professional and Technical Services				
330 Other Professional Services	9,276.00	9,276.00		18,552.00
Total Purchased Professional and Technical Services	\$9,276.00	\$9,276.00		\$18,552.00
500 Other Purchased Services				
561 Tuition To Other School Districts Within the State	33,041.38	(30,269.14)		2,772.24
Total Other Purchased Services	\$33,041.38	(\$30,269.14)		\$2,772.24
600 Supplies				
610 General Supplies	1,099.03	351.29		1,450.32
640 Books and Periodicals	456.40	122.50		578.90
Total Supplies	\$1,555.43	\$473.79		\$2,029.22
Total 1230 Emotional Support	\$916,632.16	\$413,567.53		\$1,330,199.69

General Fund (10)

	<u>Elementary</u>	<u>Secondary</u>	<u>Federal</u>	<u>Total</u>
1240 Academic Support				
100 Personnel Services – Salaries				
100 Personnel Services – Salaries	777,971.50	730,822.62		1,508,794.12
Total Personnel Services – Salaries	\$777,971.50	\$730,822.62		\$1,508,794.12
200 Personnel Services – Employee Benefits				
210 Group Insurance – Contracted Provider	221,626.99	324,083.71		545,710.70
220 Social Security Contributions	58,311.22	53,326.87		111,638.09
230 PSERS Retirement Contributions	252,410.44	232,158.09		484,568.53
250 Unemployment Compensation	2,724.95	1,541.53		4,266.48
260 Workers' Compensation	6,109.86	6,451.37		12,561.23
270 Group Insurance – Self-Insurance	106.70	(3,441.27)		(3,334.57)
280 Other Post-Employment Benefits (OPEB)	7,000.00	7,000.00		14,000.00
Total Personnel Services – Employee Benefits	\$548,290.16	\$621,120.30		\$1,169,410.46
500 Other Purchased Services				
580 Travel		137.89		137.89
Total Other Purchased Services		\$137.89		\$137.89
600 Supplies				
610 General Supplies	164.89	114.00		278.89
640 Books and Periodicals	5,325.83	4,631.42	157.96	10,115.21
650 Supplies & Fees – Technology Related	1,650.00	1,650.00	7,728.32	11,028.32
Total Supplies	\$7,140.72	\$6,395.42	\$7,886.28	\$21,422.42
Total 1240 Academic Support	\$1,333,402.38	\$1,358,476.23	\$7,886.28	\$2,699,764.89

General Fund (10)

	<u>Elementary</u>	<u>Secondary</u>	<u>Federal</u>	<u>Total</u>
1241 Learning Support – Public				
100 Personnel Services – Salaries				
100 Personnel Services – Salaries	757,410.90	709,136.38		1,466,547.28
Total Personnel Services – Salaries	\$757,410.90	\$709,136.38		\$1,466,547.28
200 Personnel Services – Employee Benefits				
210 Group Insurance – Contracted Provider	214,038.27	316,494.99		530,533.26
220 Social Security Contributions	56,760.22	51,703.53		108,463.75
230 PSERS Retirement Contributions	245,713.93	225,094.95		470,808.88
250 Unemployment Compensation	2,693.77	1,510.37		4,204.14
260 Workers' Compensation	5,521.29	5,862.87		11,384.16
270 Group Insurance – Self-Insurance	106.70	(3,441.27)		(3,334.57)
280 Other Post-Employment Benefits (OPEB)	7,000.00	7,000.00		14,000.00
Total Personnel Services – Employee Benefits	\$531,834.18	\$604,225.44		\$1,136,059.62
500 Other Purchased Services				
580 Travel		137.89		137.89
Total Other Purchased Services		\$137.89		\$137.89
600 Supplies				
610 General Supplies	164.89	114.00		278.89
640 Books and Periodicals	5,325.83	4,631.42	157.96	10,115.21
650 Supplies & Fees – Technology Related	1,650.00	1,650.00	7,728.32	11,028.32
Total Supplies	\$7,140.72	\$6,395.42	\$7,886.28	\$21,422.42
Total 1241 Learning Support – Public	\$1,296,385.80	\$1,319,895.13	\$7,886.28	\$2,624,167.21

General Fund (10)

	<u>Elementary</u>	<u>Secondary</u>	<u>Federal</u>	<u>Total</u>
1243 Gifted Support				
100 Personnel Services – Salaries				
100 Personnel Services – Salaries	20,560.60	21,686.24		42,246.84
Total Personnel Services – Salaries	\$20,560.60	\$21,686.24		\$42,246.84
200 Personnel Services – Employee Benefits				
210 Group Insurance – Contracted Provider	7,588.72	7,588.72		15,177.44
220 Social Security Contributions	1,551.00	1,623.34		3,174.34
230 PSERS Retirement Contributions	6,696.51	7,063.14		13,759.65
250 Unemployment Compensation	31.18	31.16		62.34
260 Workers' Compensation	588.57	588.50		1,177.07
Total Personnel Services – Employee Benefits	\$16,455.98	\$16,894.86		\$33,350.84
Total 1243 Gifted Support	\$37,016.58	\$38,581.10		\$75,597.68

General Fund (10)

1260 Physical Support

300 Purchased Professional and Technical Services

330 Other Professional Services

Total Purchased Professional and Technical Services

Total 1260 Physical Support

Elementary

Secondary

Federal

Total

24,106.84

24,106.84

\$24,106.84

\$24,106.84

\$24,106.84

\$24,106.84

General Fund (10)

1280 Early Intervention Support

300 Purchased Professional and Technical Services

322 Professional Educational Services - Jus

Total Purchased Professional and Technical Services

Total 1280 Early Intervention Support

Elementary

Secondary

Federal

Total

8,619.81

8,619.81

\$8,619.81

\$8,619.81

\$8,619.81

\$8,619.81

General Fund (10)

	<u>Elementary</u>	<u>Secondary</u>	<u>Federal</u>	<u>Total</u>
1290 Special Programs - Other Support				
100 Personnel Services – Salaries				
100 Personnel Services – Salaries	113,183.59	88,516.70		201,700.29
Total Personnel Services – Salaries	\$113,183.59	\$88,516.70		\$201,700.29
200 Personnel Services – Employee Benefits				
210 Group Insurance – Contracted Provider	33,617.28	33,617.29		67,234.57
220 Social Security Contributions	8,417.18	6,478.38		14,895.56
230 PSERS Retirement Contributions	38,730.53	28,459.85		67,190.38
250 Unemployment Compensation	562.14	529.49		1,091.63
260 Workers' Compensation	891.34	772.53		1,663.87
270 Group Insurance – Self-Insurance	(2,500.00)	(2,500.00)		(5,000.00)
280 Other Post-Employment Benefits (OPEB)	8,579.06	8,579.07		17,158.13
Total Personnel Services – Employee Benefits	\$88,297.53	\$75,936.61		\$164,234.14
300 Purchased Professional and Technical Services				
322 Professional Educational Services – Ius	105,156.13	378,371.22	456,881.21	940,408.56
330 Other Professional Services	16,136.12	15,281.76		31,417.88
Total Purchased Professional and Technical Services	\$121,292.25	\$393,652.98	\$456,881.21	\$971,826.44
500 Other Purchased Services				
561 Tuition To Other School Districts Within the State	10,891.00	211,007.77		221,898.77
569 Tuition – Other	1,591.35	22,492.85		24,084.20
Total Other Purchased Services	\$12,482.35	\$233,500.62		\$245,982.97
600 Supplies				
640 Books and Periodicals	2,307.50	2,307.50		4,615.00
Total Supplies	\$2,307.50	\$2,307.50		\$4,615.00
Total 1290 Special Programs - Other Support	\$337,563.22	\$793,914.41	\$456,881.21	\$1,588,358.84

General Fund (10)

	<u>Elementary</u>	<u>Secondary</u>	<u>Federal</u>	<u>Total</u>
1300 Vocational Education				
100 <u>Personnel Services – Salaries</u>				
100 Personnel Services – Salaries		233,144.12		233,144.12
Total Personnel Services – Salaries		\$233,144.12		\$233,144.12
200 <u>Personnel Services – Employee Benefits</u>				
210 Group Insurance – Contracted Provider		70,208.82		70,208.82
220 Social Security Contributions		17,641.10		17,641.10
230 PSERS Retirement Contributions		75,934.94		75,934.94
250 Unemployment Compensation		196.70		196.70
260 Workers' Compensation		1,990.16		1,990.16
270 Group Insurance – Self-Insurance		(1,108.94)		(1,108.94)
280 Other Post-Employment Benefits (OPEB)		15,100.05		15,100.05
Total Personnel Services – Employee Benefits		\$179,962.83		\$179,962.83
500 <u>Other Purchased Services</u>				
564 Tuition To Career and Technology Centers		864,738.00		864,738.00
Total Other Purchased Services		\$864,738.00		\$864,738.00
600 <u>Supplies</u>				
610 General Supplies		125.90		125.90
640 Books and Periodicals		6,699.00		6,699.00
Total Supplies		\$6,824.90		\$6,824.90
Total 1300 Vocational Education		\$1,284,669.85		\$1,284,669.85

General Fund (10)

	<u>Elementary</u>	<u>Secondary</u>	<u>Federal</u>	<u>Total</u>
1400 Other Instructional Programs – Elementary / Secondary				
100 Personnel Services – Salaries				
100 Personnel Services – Salaries	43,083.83	59,365.60		102,449.43
Total Personnel Services – Salaries	\$43,083.83	\$59,365.60		\$102,449.43
200 Personnel Services – Employee Benefits				
210 Group Insurance – Contracted Provider	24,798.24	37,728.28		62,526.52
220 Social Security Contributions	3,225.21	4,437.23		7,662.44
230 PSERS Retirement Contributions	14,032.38	19,335.41		33,367.79
250 Unemployment Compensation	29.05	29.52		58.57
260 Workers' Compensation	216.78	220.22		437.00
Total Personnel Services – Employee Benefits	\$42,301.66	\$61,750.66		\$104,052.32
300 Purchased Professional and Technical Services				
322 Professional Educational Services – Jus	7,920.00	148,727.00		156,647.00
Total Purchased Professional and Technical Services	\$7,920.00	\$148,727.00		\$156,647.00
400 Purchased Property Services				
440 Rentals	173.08	173.07		346.15
Total Purchased Property Services	\$173.08	\$173.07		\$346.15
500 Other Purchased Services				
561 Tuition To Other School Districts Within the State	30,424.52	64,737.24		95,161.76
569 Tuition – Other	4,042.65	48,730.00		52,772.65
Total Other Purchased Services	\$34,467.17	\$113,467.24		\$147,934.41
Total 1400 Other Instructional Programs – Elementary / Secondary	\$127,945.74	\$383,483.57		\$511,429.31

General Fund (10)

	<u>Elementary</u>	<u>Secondary</u>	<u>Federal</u>	<u>Total</u>
1430 Homebound Instruction				
100 <u>Personnel Services – Salaries</u>				
100 Personnel Services – Salaries	640.00	512.00		1,152.00
Total Personnel Services – Salaries	\$640.00	\$512.00		\$1,152.00
200 <u>Personnel Services – Employee Benefits</u>				
220 Social Security Contributions	47.88	38.40		86.28
230 PSERS Retirement Contributions	208.44	166.76		375.20
250 Unemployment Compensation	0.41	0.87		1.28
260 Workers' Compensation	3.00	6.45		9.45
Total Personnel Services – Employee Benefits	\$259.73	\$212.48		\$472.21
Total 1430 Homebound Instruction	\$899.73	\$724.48		\$1,624.21

General Fund (10)

	<u>Elementary</u>	<u>Secondary</u>	<u>Federal</u>	<u>Total</u>
1440 Alternative Regular Education Programs				
100 Personnel Services – Salaries				
100 Personnel Services – Salaries	33,638.50	33,638.50		67,277.00
Total Personnel Services – Salaries	\$33,638.50	\$33,638.50		\$67,277.00
200 Personnel Services – Employee Benefits				
210 Group Insurance – Contracted Provider	12,376.62	12,376.62		24,753.24
220 Social Security Contributions	2,538.52	2,538.51		5,077.03
230 PSERS Retirement Contributions	10,956.00	10,956.01		21,912.01
250 Unemployment Compensation	28.64	28.65		57.29
260 Workers' Compensation	213.78	213.77		427.55
Total Personnel Services – Employee Benefits	\$26,113.56	\$26,113.56		\$52,227.12
300 Purchased Professional and Technical Services				
322 Professional Educational Services – lus	7,920.00	148,727.00		156,647.00
Total Purchased Professional and Technical Services	\$7,920.00	\$148,727.00		\$156,647.00
400 Purchased Property Services				
440 Rentals	173.08	173.07		346.15
Total Purchased Property Services	\$173.08	\$173.07		\$346.15
500 Other Purchased Services				
561 Tuition To Other School Districts Within the State	30,424.52	64,737.24		95,161.76
569 Tuition – Other	4,042.65	48,730.00		52,772.65
Total Other Purchased Services	\$34,467.17	\$113,467.24		\$147,934.41
Total 1440 Alternative Regular Education Programs	\$102,312.31	\$322,119.37		\$424,431.68

General Fund (10)

	<u>Elementary</u>	<u>Secondary</u>	<u>Federal</u>	<u>Total</u>
1441 Adjudicated / Court-Placed Programs				
100 <u>Personnel Services – Salaries</u>				
100 Personnel Services – Salaries	33,638.50	33,638.50		67,277.00
Total Personnel Services – Salaries	\$33,638.50	\$33,638.50		\$67,277.00
200 <u>Personnel Services – Employee Benefits</u>				
210 Group Insurance – Contracted Provider	12,376.62	12,376.62		24,753.24
220 Social Security Contributions	2,538.52	2,538.51		5,077.03
230 PSERS Retirement Contributions	10,956.00	10,956.01		21,912.01
250 Unemployment Compensation	28.64	28.65		57.29
260 Workers' Compensation	213.78	213.77		427.55
Total Personnel Services – Employee Benefits	\$26,113.56	\$26,113.56		\$52,227.12
400 <u>Purchased Property Services</u>				
440 Rentals	173.08	173.07		346.15
Total Purchased Property Services	\$173.08	\$173.07		\$346.15
500 <u>Other Purchased Services</u>				
561 Tuition To Other School Districts Within the State	30,424.52	64,737.24		95,161.76
Total Other Purchased Services	\$30,424.52	\$64,737.24		\$95,161.76
Total 1441 Adjudicated / Court-Placed Programs	\$90,349.66	\$124,662.37		\$215,012.03

General Fund (10)

	<u>Elementary</u>	<u>Secondary</u>	<u>Federal</u>	<u>Total</u>
1442 Alternative Education Programs				
300 <u>Purchased Professional and Technical Services</u>				
322 Professional Educational Services – lus	7,920.00	148,727.00		156,647.00
Total Purchased Professional and Technical Services	\$7,920.00	\$148,727.00		\$156,647.00
500 <u>Other Purchased Services</u>				
569 Tuition – Other	4,042.65	48,730.00		52,772.65
Total Other Purchased Services	\$4,042.65	\$48,730.00		\$52,772.65
Total 1442 Alternative Education Programs	\$11,962.65	\$197,457.00		\$209,419.65

General Fund (10)

	<u>Elementary</u>	<u>Secondary</u>	<u>Federal</u>	<u>Total</u>
1490 Additional Other Instructional Programs				
100 <u>Personnel Services – Salaries</u>				
100 Personnel Services – Salaries	8,805.33	25,215.10		34,020.43
Total Personnel Services – Salaries	\$8,805.33	\$25,215.10		\$34,020.43
200 <u>Personnel Services – Employee Benefits</u>				
210 Group Insurance – Contracted Provider	12,421.62	25,351.66		37,773.28
220 Social Security Contributions	638.81	1,860.32		2,499.13
230 PSERS Retirement Contributions	2,867.94	8,212.64		11,080.58
Total Personnel Services – Employee Benefits	\$15,928.37	\$35,424.62		\$51,352.99
Total 1490 Additional Other Instructional Programs	\$24,733.70	\$60,639.72		\$85,373.42

General Fund (10)

	<u>Elementary</u>	<u>Secondary</u>	<u>Federal</u>	<u>Total</u>
1500 Nonpublic School Programs				
300 <u>Purchased Professional and Technical Services</u>				
322 Professional Educational Services – lus			11,221.33	11,221.33
Total Purchased Professional and Technical Services			\$11,221.33	\$11,221.33
600 <u>Supplies</u>				
610 General Supplies			1,083.00	1,083.00
Total Supplies			\$1,083.00	\$1,083.00
Total 1500 Nonpublic School Programs			\$12,304.33	\$12,304.33

General Fund (10)

2000 Support Services

	<u>Total</u>
100 Personnel Services – Salaries	
100 Personnel Services – Salaries	4,654,893.35
Total Personnel Services – Salaries	\$4,654,893.35
200 Personnel Services – Employee Benefits	
210 Group Insurance – Contracted Provider	1,774,598.87
220 Social Security Contributions	342,793.08
230 PSERS Retirement Contributions	1,456,851.20
240 Tuition Reimbursement	136,901.50
250 Unemployment Compensation	11,231.46
260 Workers' Compensation	25,010.56
270 Group Insurance – Self-Insurance	12,294.76
280 Other Post-Employment Benefits (OPEB)	25,500.00
Total Personnel Services – Employee Benefits	\$3,785,181.43
300 Purchased Professional and Technical Services	
322 Professional Educational Services – Ius	6,431.06
324 Professional Educational Services – Employee Training and Development Services	5,569.75
330 Other Professional Services	517,138.97
340 Technical Services	42,051.41
350 Security / Safety Services	4,386.16
Total Purchased Professional and Technical Services	\$575,577.35
400 Purchased Property Services	
410 Cleaning Services	22,942.56
420 Utility Services	117,551.62
430 Repairs and Maintenance Services	411,851.80
440 Rentals	405,653.96
450 Construction Services	1,765.00
460 Extermination Services	14,253.62
Total Purchased Property Services	\$974,018.56
500 Other Purchased Services	
513 Contracted Carriers	4,460.14
516 Student Transportation Services From the IU	59,205.78
520 Insurance – General	931.00
521 Fire Insurance	158.60
522 Automotive Liability Insurance	31,458.00
523 General Property and Liability Insurance	125,915.00
530 Communications	87,620.70
549 Other Advertising/Public Relations	16,062.60
550 Printing and Binding	11,457.00
580 Travel	2,018.82
Total Other Purchased Services	\$339,287.64
600 Supplies	
610 General Supplies	379,008.51
620 Energy	567,877.67
630 Food	3,277.65

General Fund (10)

	<u>Total</u>
2000 Support Services	
600 Supplies	
640 Books and Periodicals	19,016.33
650 Supplies & Fees – Technology Related	122,845.77
Total Supplies	\$1,092,025.93
700 Property	
762 Capitalized Equipment - Replacement	2,491.00
766 Capitalized Technology Hardware and Equipment – Replacement	16,873.75
768 Capitalized Technology Software - Replacement	5,285.00
Total Property	\$24,649.75
800 Other Objects	
810 Dues and Fees	19,647.16
Total Other Objects	\$19,647.16
Total 2000 Support Services	\$11,465,281.17

General Fund (10)

	<u>Elementary</u>	<u>Secondary</u>	<u>Federal</u>	<u>Total</u>
2100 Support Services – Students				
100 Personnel Services – Salaries				
100 Personnel Services – Salaries	74,242.84	217,273.22		563,974.37
Total Personnel Services – Salaries	\$74,242.84	\$217,273.22		\$563,974.37
200 Personnel Services – Employee Benefits				
210 Group Insurance – Contracted Provider	4,193.66	81,700.24		229,942.62
220 Social Security Contributions	4,112.46	14,368.95		38,828.63
230 PSERS Retirement Contributions	17,508.91	64,093.86		170,342.79
250 Unemployment Compensation	79.92	142.19		425.20
260 Workers' Compensation	692.60	1,317.96		3,526.41
270 Group Insurance – Self-Insurance	329.07	329.09		658.16
280 Other Post-Employment Benefits (OPEB)	7,000.00	7,000.00		14,000.00
Total Personnel Services – Employee Benefits	\$33,916.62	\$168,952.29		\$457,723.81
300 Purchased Professional and Technical Services				
324 Professional Educational Services – Employee Training and Development Services				120.00
330 Other Professional Services	55,141.00	55,141.00		110,282.00
Total Purchased Professional and Technical Services	\$55,141.00	\$55,141.00		\$110,402.00
400 Purchased Property Services				
430 Repairs and Maintenance Services		70.00		1,710.00
440 Rentals		3,964.68		5,518.88
Total Purchased Property Services		\$4,034.68		\$7,228.88
500 Other Purchased Services				
530 Communications	157.86	252.87		1,225.01
580 Travel				54.50
Total Other Purchased Services	\$157.86	\$252.87		\$1,279.51
600 Supplies				
610 General Supplies	3,277.01	4,606.30		9,670.37
640 Books and Periodicals	369.07	369.07		738.14
650 Supplies & Fees – Technology Related		451.04		451.04
Total Supplies	\$3,646.08	\$5,426.41		\$10,859.55
800 Other Objects				
810 Dues and Fees		25.00		910.00
Total Other Objects		\$25.00		\$910.00
Total 2100 Support Services – Students	\$167,104.40	\$451,105.47		\$1,152,378.12

General Fund (10)

	<u>Elementary</u>	<u>Secondary</u>	<u>Federal</u>	<u>Total</u>
2120 Guidance Services				
100 Personnel Services – Salaries				
100 Personnel Services – Salaries	20,485.00	199,529.11		220,014.11
Total Personnel Services – Salaries	\$20,485.00	\$199,529.11		\$220,014.11
200 Personnel Services – Employee Benefits				
210 Group Insurance – Contracted Provider	1,910.75	76,698.47		78,609.22
220 Social Security Contributions		13,022.30		13,022.30
230 PSERS Retirement Contributions		58,314.61		58,314.61
250 Unemployment Compensation	15.49	99.22		114.71
260 Workers' Compensation		856.16		856.16
270 Group Insurance – Self-Insurance	329.07	329.09		658.16
280 Other Post-Employment Benefits (OPEB)	7,000.00	7,000.00		14,000.00
Total Personnel Services – Employee Benefits	\$9,255.31	\$156,319.85		\$165,575.16
400 Purchased Property Services				
430 Repairs and Maintenance Services		70.00		70.00
440 Rentals		3,964.68		3,964.68
Total Purchased Property Services		\$4,034.68		\$4,034.68
500 Other Purchased Services				
530 Communications	157.86	252.87		410.73
Total Other Purchased Services	\$157.86	\$252.87		\$410.73
600 Supplies				
610 General Supplies		1,670.00		1,670.00
650 Supplies & Fees – Technology Related		451.04		451.04
Total Supplies		\$2,121.04		\$2,121.04
800 Other Objects				
810 Dues and Fees		25.00		25.00
Total Other Objects		\$25.00		\$25.00
Total 2120 Guidance Services	\$29,898.17	\$362,282.55		\$392,180.72

General Fund (10)

	<u>Elementary</u>	<u>Secondary</u>	<u>Federal</u>	<u>Total</u>
2140 Psychological Services				
100 Personnel Services – Salaries				
100 Personnel Services – Salaries	53,757.84	9,774.16		63,532.00
Total Personnel Services – Salaries	\$53,757.84	\$9,774.16		\$63,532.00
200 Personnel Services – Employee Benefits				
210 Group Insurance – Contracted Provider	2,282.91	2,066.09		4,349.00
220 Social Security Contributions	4,112.46	745.42		4,857.88
230 PSERS Retirement Contributions	17,508.91	3,183.44		20,692.35
250 Unemployment Compensation	64.43	42.97		107.40
260 Workers' Compensation	692.60	461.80		1,154.40
Total Personnel Services – Employee Benefits	\$24,661.31	\$6,499.72		\$31,161.03
300 Purchased Professional and Technical Services				
330 Other Professional Services	55,141.00	55,141.00		110,282.00
Total Purchased Professional and Technical Services	\$55,141.00	\$55,141.00		\$110,282.00
600 Supplies				
610 General Supplies	3,277.01	2,936.30		6,213.31
640 Books and Periodicals	369.07	369.07		738.14
Total Supplies	\$3,646.08	\$3,305.37		\$6,951.45
Total 2140 Psychological Services	\$137,206.23	\$74,720.25		\$211,926.48

General Fund (10)

	<u>Elementary</u>	<u>Secondary</u>	<u>Federal</u>	<u>Total</u>
2160 Social Work Services				
100 Personnel Services – Salaries				
100 Personnel Services – Salaries				147,523.45
Total Personnel Services – Salaries				\$147,523.45
200 Personnel Services – Employee Benefits				
210 Group Insurance – Contracted Provider				74,529.72
220 Social Security Contributions				10,921.85
230 PSERS Retirement Contributions				48,048.64
250 Unemployment Compensation				125.62
260 Workers' Compensation				937.64
Total Personnel Services – Employee Benefits				\$134,563.47
300 Purchased Professional and Technical Services				
324 Professional Educational Services – Employee Training and Development Services				120.00
Total Purchased Professional and Technical Services				\$120.00
600 Supplies				
610 General Supplies				96.91
Total Supplies				\$96.91
800 Other Objects				
810 Dues and Fees				765.00
Total Other Objects				\$765.00
Total 2160 Social Work Services				\$283,068.83

General Fund (10)

	<u>Elementary</u>	<u>Secondary</u>	<u>Federal</u>	<u>Total</u>
2170 Student Accounting Services				
100 Personnel Services – Salaries				
100 Personnel Services – Salaries				124,934.86
Total Personnel Services – Salaries				\$124,934.86
200 Personnel Services – Employee Benefits				
210 Group Insurance – Contracted Provider				69,519.00
220 Social Security Contributions				9,425.37
230 PSERS Retirement Contributions				40,691.38
250 Unemployment Compensation				77.47
260 Workers' Compensation				578.21
Total Personnel Services – Employee Benefits				\$120,291.43
400 Purchased Property Services				
430 Repairs and Maintenance Services				1,640.00
440 Rentals				1,554.20
Total Purchased Property Services				\$3,194.20
500 Other Purchased Services				
530 Communications				814.28
580 Travel				54.50
Total Other Purchased Services				\$868.78
600 Supplies				
610 General Supplies				1,690.15
Total Supplies				\$1,690.15
800 Other Objects				
810 Dues and Fees				120.00
Total Other Objects				\$120.00
Total 2170 Student Accounting Services				\$251,099.42

General Fund (10)

	<u>Elementary</u>	<u>Secondary</u>	<u>Federal</u>	<u>Total</u>
2190 Other Student Services				
100 Personnel Services – Salaries				
100 Personnel Services – Salaries		7,969.95		7,969.95
Total Personnel Services – Salaries		\$7,969.95		\$7,969.95
200 Personnel Services – Employee Benefits				
210 Group Insurance – Contracted Provider		2,935.68		2,935.68
220 Social Security Contributions		601.23		601.23
230 PSERS Retirement Contributions		2,595.81		2,595.81
Total Personnel Services – Employee Benefits		\$6,132.72		\$6,132.72
Total 2190 Other Student Services		\$14,102.67		\$14,102.67

General Fund (10)

	Elementary	Secondary	Federal	Total
2200 Support Services – Instructional Staff				
100 Personnel Services – Salaries				
100 Personnel Services – Salaries	202,518.51	215,801.27	54,472.11	472,791.89
Total Personnel Services – Salaries	\$202,518.51	\$215,801.27	\$54,472.11	\$472,791.89
200 Personnel Services – Employee Benefits				
210 Group Insurance – Contracted Provider	67,079.18	61,516.02	27,256.54	155,851.74
220 Social Security Contributions	15,320.76	16,299.77	4,084.11	35,704.64
230 PSERS Retirement Contributions	65,960.15	70,286.61	17,741.68	153,988.44
240 Tuition Reimbursement	59,083.00	77,818.50		136,901.50
250 Unemployment Compensation	192.03	202.32		394.35
260 Workers' Compensation	1,442.88	1,500.37		2,943.25
270 Group Insurance – Self-Insurance	430.37			430.37
Total Personnel Services – Employee Benefits	\$209,508.37	\$227,623.59	\$49,082.33	\$486,214.29
300 Purchased Professional and Technical Services				
322 Professional Educational Services – lus			6,431.06	6,431.06
324 Professional Educational Services – Employee Training and Development Services	150.00	350.00	417.00	917.00
330 Other Professional Services	196.88	196.87		393.75
Total Purchased Professional and Technical Services	\$346.88	\$546.87	\$6,848.06	\$7,741.81
400 Purchased Property Services				
430 Repairs and Maintenance Services	441.16			441.16
440 Rentals	4,210.70	11,693.67		15,904.37
Total Purchased Property Services	\$4,651.86	\$11,693.67		\$16,345.53
500 Other Purchased Services				
530 Communications	154.08	154.07		308.15
580 Travel	383.76	214.19	506.74	1,104.69
Total Other Purchased Services	\$537.84	\$368.26	\$506.74	\$1,412.84
600 Supplies				
610 General Supplies	491.96	766.63		1,258.59
630 Food	11.32	3.78		15.10
640 Books and Periodicals	7,461.53	7,354.67		14,816.20
650 Supplies & Fees – Technology Related	1,160.26	10,216.24		11,376.50
Total Supplies	\$9,125.07	\$18,341.32		\$27,466.39
800 Other Objects				
810 Dues and Fees	44.24	192.76		237.00
Total Other Objects	\$44.24	\$192.76		\$237.00
Total 2200 Support Services – Instructional Staff	\$426,732.77	\$474,567.74	\$110,909.24	\$1,012,209.75

General Fund (10)

	<u>Elementary</u>	<u>Secondary</u>	<u>Federal</u>	<u>Total</u>
2250 School Library Services				
100 Personnel Services – Salaries				
100 Personnel Services – Salaries	76,681.41	87,945.77		164,627.18
Total Personnel Services – Salaries	\$76,681.41	\$87,945.77		\$164,627.18
200 Personnel Services – Employee Benefits				
210 Group Insurance – Contracted Provider	27,929.81	22,765.61		50,695.42
220 Social Security Contributions	5,800.55	6,613.23		12,413.78
230 PSERS Retirement Contributions	24,975.15	28,644.04		53,619.19
250 Unemployment Compensation	59.05	69.34		128.39
260 Workers' Compensation	450.40	507.88		958.28
270 Group Insurance – Self-Insurance	430.37			430.37
Total Personnel Services – Employee Benefits	\$59,645.33	\$58,600.10		\$118,245.43
400 Purchased Property Services				
430 Repairs and Maintenance Services	441.16			441.16
440 Rentals	3,200.52	10,683.50		13,884.02
Total Purchased Property Services	\$3,641.68	\$10,683.50		\$14,325.18
600 Supplies				
610 General Supplies	345.68	759.38		1,105.06
640 Books and Periodicals	7,364.03	7,257.17		14,621.20
650 Supplies & Fees – Technology Related	1,160.26	10,216.24		11,376.50
Total Supplies	\$8,869.97	\$18,232.79		\$27,102.76
800 Other Objects				
810 Dues and Fees	44.24	192.76		237.00
Total Other Objects	\$44.24	\$192.76		\$237.00
Total 2250 School Library Services	\$148,882.63	\$175,654.92		\$324,537.55

General Fund (10)

	<u>Elementary</u>	<u>Secondary</u>	<u>Federal</u>	<u>Total</u>
2260 Instruction and Curriculum Development Services				
100 Personnel Services – Salaries				
100 Personnel Services – Salaries	125,837.10	127,855.50		253,692.60
Total Personnel Services – Salaries	\$125,837.10	\$127,855.50		\$253,692.60
200 Personnel Services – Employee Benefits				
210 Group Insurance – Contracted Provider	39,149.37	38,750.41		77,899.78
220 Social Security Contributions	9,520.21	9,686.54		19,206.75
230 PSERS Retirement Contributions	40,985.00	41,642.57		82,627.57
250 Unemployment Compensation	132.98	132.98		265.96
260 Workers' Compensation	992.48	992.49		1,984.97
Total Personnel Services – Employee Benefits	\$90,780.04	\$91,204.99		\$181,985.03
300 Purchased Professional and Technical Services				
330 Other Professional Services	196.88	196.87		393.75
Total Purchased Professional and Technical Services	\$196.88	\$196.87		\$393.75
400 Purchased Property Services				
440 Rentals	1,010.18	1,010.17		2,020.35
Total Purchased Property Services	\$1,010.18	\$1,010.17		\$2,020.35
500 Other Purchased Services				
530 Communications	154.08	154.07		308.15
580 Travel	25.95	25.95		51.90
Total Other Purchased Services	\$180.03	\$180.02		\$360.05
600 Supplies				
610 General Supplies	146.28	7.25		153.53
640 Books and Periodicals	97.50	97.50		195.00
Total Supplies	\$243.78	\$104.75		\$348.53
Total 2260 Instruction and Curriculum Development Services	\$218,248.01	\$220,552.30		\$438,800.31

General Fund (10)

	<u>Elementary</u>	<u>Secondary</u>	<u>Federal</u>	<u>Total</u>
2270 Instructional Staff Professional Development Services				
100 Personnel Services – Salaries				
100 Personnel Services – Salaries			54,472.11	54,472.11
Total Personnel Services – Salaries			\$54,472.11	\$54,472.11
200 Personnel Services – Employee Benefits				
210 Group Insurance – Contracted Provider			27,256.54	27,256.54
220 Social Security Contributions			4,084.11	4,084.11
230 PSERS Retirement Contributions			17,741.68	17,741.68
240 Tuition Reimbursement	59,083.00	77,818.50		136,901.50
Total Personnel Services – Employee Benefits	\$59,083.00	\$77,818.50	\$49,082.33	\$185,983.83
300 Purchased Professional and Technical Services				
324 Professional Educational Services – Employee Training and Development Services	150.00	350.00	417.00	917.00
Total Purchased Professional and Technical Services	\$150.00	\$350.00	\$417.00	\$917.00
500 Other Purchased Services				
580 Travel	357.81	188.24	506.74	1,052.79
Total Other Purchased Services	\$357.81	\$188.24	\$506.74	\$1,052.79
600 Supplies				
630 Food	11.32	3.78		15.10
Total Supplies	\$11.32	\$3.78		\$15.10
Total 2270 Instructional Staff Professional Development Services	\$59,602.13	\$78,360.52	\$104,478.18	\$242,440.83

General Fund (10)

2280 Nonpublic Support Services

300 Purchased Professional and Technical Services

Elementary

Secondary

Federal

Total

322 Professional Educational Services – Ius

6,431.06

6,431.06

Total Purchased Professional and Technical Services

\$6,431.06

\$6,431.06

Total 2280 Nonpublic Support Services

\$6,431.06

\$6,431.06

General Fund (10)

	<u>Elementary</u>	<u>Secondary</u>	<u>Federal</u>	<u>Total</u>
2300 Support Services – Administration				
100 Personnel Services – Salaries				
100 Personnel Services – Salaries	372,442.12	413,854.56		1,142,885.57
Total Personnel Services – Salaries	\$372,442.12	\$413,854.56		\$1,142,885.57
200 Personnel Services – Employee Benefits				
210 Group Insurance – Contracted Provider	154,621.86	149,855.21		403,230.23
220 Social Security Contributions	28,166.12	29,655.24		84,583.38
230 PSERS Retirement Contributions	121,304.33	127,806.32		359,736.22
250 Unemployment Compensation	256.16	266.62		700.27
260 Workers' Compensation	1,872.85	2,028.91		5,226.41
270 Group Insurance – Self-Insurance				746.70
Total Personnel Services – Employee Benefits	\$306,221.32	\$309,612.30		\$854,223.21
300 Purchased Professional and Technical Services				
324 Professional Educational Services – Employee Training and Development Services				3,004.00
330 Other Professional Services				286,775.50
Total Purchased Professional and Technical Services				\$289,779.50
400 Purchased Property Services				
430 Repairs and Maintenance Services	210.00	190.00		470.00
440 Rentals	6,664.45	6,722.45		21,814.26
Total Purchased Property Services	\$6,874.45	\$6,912.45		\$22,284.26
500 Other Purchased Services				
520 Insurance – General				931.00
530 Communications	624.95	281.21		1,791.81
549 Other Advertising/Public Relations				8,770.91
550 Printing and Binding	770.99	4,999.98		8,207.94
580 Travel				439.79
Total Other Purchased Services	\$1,395.94	\$5,281.19		\$20,141.45
600 Supplies				
610 General Supplies	1,868.22	1,709.38		6,290.55
630 Food	416.95	805.95		3,262.55
640 Books and Periodicals				3,422.00
Total Supplies	\$2,285.17	\$2,515.33		\$12,975.10
800 Other Objects				
810 Dues and Fees	892.49	1,456.76		15,316.41
Total Other Objects	\$892.49	\$1,456.76		\$15,316.41
Total 2300 Support Services – Administration	\$690,111.49	\$739,632.59		\$2,357,605.50

General Fund (10)

	<u>Elementary</u>	<u>Secondary</u>	<u>Federal</u>	<u>Total</u>
2310 Board Services				
100 Personnel Services – Salaries				
100 Personnel Services – Salaries				2,499.90
Total Personnel Services – Salaries				\$2,499.90
200 Personnel Services – Employee Benefits				
220 Social Security Contributions				187.56
230 PSERS Retirement Contributions				814.32
Total Personnel Services – Employee Benefits				\$1,001.88
300 Purchased Professional and Technical Services				
330 Other Professional Services				5,243.00
Total Purchased Professional and Technical Services				\$5,243.00
500 Other Purchased Services				
520 Insurance – General				500.00
549 Other Advertising/Public Relations				2,770.91
Total Other Purchased Services				\$3,270.91
600 Supplies				
610 General Supplies				276.35
630 Food				1,485.15
640 Books and Periodicals				1,170.00
Total Supplies				\$2,931.50
800 Other Objects				
810 Dues and Fees				9,897.16
Total Other Objects				\$9,897.16
Total 2310 Board Services				\$24,844.35

General Fund (10)

	<u>Elementary</u>	<u>Secondary</u>	<u>Federal</u>	<u>Total</u>
2320 Board Treasurer Services				
100 <u>Personnel Services – Salaries</u>				
100 Personnel Services – Salaries				499.98
Total Personnel Services – Salaries				\$499.98
200 <u>Personnel Services – Employee Benefits</u>				
220 Social Security Contributions				38.25
Total Personnel Services – Employee Benefits				\$38.25
500 <u>Other Purchased Services</u>				
520 Insurance – General				431.00
Total Other Purchased Services				\$431.00
Total 2320 Board Treasurer Services				\$969.23

General Fund (10)

	<u>Elementary</u>	<u>Secondary</u>	<u>Federal</u>	<u>Total</u>
2330 Tax Assessment and Collection Services				
100 Personnel Services – Salaries				
100 Personnel Services – Salaries				16,434.00
Total Personnel Services – Salaries				\$16,434.00
200 Personnel Services – Employee Benefits				
220 Social Security Contributions				1,257.24
Total Personnel Services – Employee Benefits				\$1,257.24
300 Purchased Professional and Technical Services				
330 Other Professional Services				173,287.27
Total Purchased Professional and Technical Services				\$173,287.27
500 Other Purchased Services				
530 Communications				885.65
550 Printing and Binding				2,103.97
Total Other Purchased Services				\$2,989.62
Total 2330 Tax Assessment and Collection Services				\$193,968.13

General Fund (10)

2350 Legal and Accounting Services

Elementary

Secondary

Federal

Total

300 Purchased Professional and Technical Services

330 Other Professional Services

107,800.23

Total Purchased Professional and Technical Services

\$107,800.23

Total 2350 Legal and Accounting Services

\$107,800.23

General Fund (10)

2360 Office of the Superintendent / Executive Director Services

	<u>Elementary</u>	<u>Secondary</u>	<u>Federal</u>	<u>Total</u>
100 Personnel Services – Salaries				
100 Personnel Services – Salaries				203,041.01
Total Personnel Services – Salaries				\$203,041.01
200 Personnel Services – Employee Benefits				
210 Group Insurance – Contracted Provider				49,246.68
220 Social Security Contributions				15,152.09
230 PSERS Retirement Contributions				66,130.51
250 Unemployment Compensation				177.49
260 Workers' Compensation				1,324.65
270 Group Insurance – Self-Insurance				746.70
Total Personnel Services – Employee Benefits				\$132,778.12
300 Purchased Professional and Technical Services				
324 Professional Educational Services – Employee Training and Development Services				3,004.00
330 Other Professional Services				445.00
Total Purchased Professional and Technical Services				\$3,449.00
400 Purchased Property Services				
430 Repairs and Maintenance Services				70.00
440 Rentals				8,427.36
Total Purchased Property Services				\$8,497.36
500 Other Purchased Services				
530 Communications	45.58	45.59		91.17
549 Other Advertising/Public Relations				6,000.00
550 Printing and Binding				333.00
580 Travel				439.79
Total Other Purchased Services	\$45.58	\$45.59		\$6,863.96
600 Supplies				
610 General Supplies				979.00
630 Food				554.50
640 Books and Periodicals				2,252.00
Total Supplies				\$3,785.50
800 Other Objects				
810 Dues and Fees				3,070.00
Total Other Objects				\$3,070.00
Total 2360 Office of the Superintendent / Executive Director Services	\$45.58	\$45.59		\$361,484.95

General Fund (10)

	<u>Elementary</u>	<u>Secondary</u>	<u>Federal</u>	<u>Total</u>
2380 Office of the Principal Services				
100 Personnel Services – Salaries				
100 Personnel Services – Salaries	372,442.12	413,854.56		786,296.68
Total Personnel Services – Salaries	\$372,442.12	\$413,854.56		\$786,296.68
200 Personnel Services – Employee Benefits				
210 Group Insurance – Contracted Provider	154,621.86	149,855.21		304,477.07
220 Social Security Contributions	28,166.12	29,655.24		57,821.36
230 PSERS Retirement Contributions	121,304.33	127,806.32		249,110.65
250 Unemployment Compensation	256.16	266.62		522.78
260 Workers' Compensation	1,872.85	2,028.91		3,901.76
Total Personnel Services – Employee Benefits	\$306,221.32	\$309,612.30		\$615,833.62
400 Purchased Property Services				
430 Repairs and Maintenance Services	210.00	190.00		400.00
440 Rentals	6,664.45	6,722.45		13,386.90
Total Purchased Property Services	\$6,874.45	\$6,912.45		\$13,786.90
500 Other Purchased Services				
530 Communications	579.37	235.62		814.99
550 Printing and Binding	770.99	4,999.98		5,770.97
Total Other Purchased Services	\$1,350.36	\$5,235.60		\$6,585.96
600 Supplies				
610 General Supplies	1,868.22	1,709.38		3,577.60
630 Food	416.95	805.95		1,222.90
Total Supplies	\$2,285.17	\$2,515.33		\$4,800.50
800 Other Objects				
810 Dues and Fees	892.49	1,456.76		2,349.25
Total Other Objects	\$892.49	\$1,456.76		\$2,349.25
Total 2380 Office of the Principal Services	\$690,065.91	\$739,587.00		\$1,429,652.91

General Fund (10)

	<u>Elementary</u>	<u>Secondary</u>	<u>Federal</u>	<u>Total</u>
2390 Other Administration Services				
100 Personnel Services – Salaries				
100 Personnel Services – Salaries				134,114.00
Total Personnel Services – Salaries				\$134,114.00
200 Personnel Services – Employee Benefits				
210 Group Insurance – Contracted Provider				49,506.48
220 Social Security Contributions				10,126.88
230 PSERS Retirement Contributions				43,680.74
Total Personnel Services – Employee Benefits				\$103,314.10
600 Supplies				
610 General Supplies				1,457.60
Total Supplies				\$1,457.60
Total 2390 Other Administration Services				\$238,885.70

General Fund (10)

	<u>Elementary</u>	<u>Secondary</u>	<u>Federal</u>	<u>Total</u>
2400 Support Services – Pupil Health				
100 Personnel Services – Salaries				
100 Personnel Services – Salaries				270,321.13
Total Personnel Services – Salaries				\$270,321.13
200 Personnel Services – Employee Benefits				
210 Group Insurance – Contracted Provider				95,335.88
220 Social Security Contributions				20,427.51
230 PSERS Retirement Contributions				87,229.51
250 Unemployment Compensation				395.12
260 Workers' Compensation				1,699.10
270 Group Insurance – Self-Insurance				471.60
Total Personnel Services – Employee Benefits				\$295,558.72
300 Purchased Professional and Technical Services				
330 Other Professional Services				2,891.50
Total Purchased Professional and Technical Services				\$2,891.50
400 Purchased Property Services				
430 Repairs and Maintenance Services				180.00
440 Rentals				9,912.95
Total Purchased Property Services				\$10,092.95
500 Other Purchased Services				
530 Communications				38.18
550 Printing and Binding				386.00
Total Other Purchased Services				\$424.18
600 Supplies				
610 General Supplies				1,909.00
Total Supplies				\$1,909.00
800 Other Objects				
810 Dues and Fees				80.00
Total Other Objects				\$80.00
Total 2400 Support Services – Pupil Health				\$491,277.48

General Fund (10)

	<u>Elementary</u>	<u>Secondary</u>	<u>Federal</u>	<u>Total</u>
2420 Medical Services				
300 <u>Purchased Professional and Technical Services</u>				
330 Other Professional Services				1,433.00
Total Purchased Professional and Technical Services				\$1,433.00
400 <u>Purchased Property Services</u>				
430 Repairs and Maintenance Services				135.00
440 Rentals				9,912.95
Total Purchased Property Services				\$10,047.95
500 <u>Other Purchased Services</u>				
550 Printing and Binding				386.00
Total Other Purchased Services				\$386.00
600 <u>Supplies</u>				
610 General Supplies				(151.45)
Total Supplies				(\$151.45)
Total 2420 Medical Services				\$11,715.50

General Fund (10)

	<u>Elementary</u>	<u>Secondary</u>	<u>Federal</u>	<u>Total</u>
2430 Dental Services				
300 Purchased Professional and Technical Services				
330 Other Professional Services				202.50
Total Purchased Professional and Technical Services				\$202.50
600 Supplies				
610 General Supplies				904.17
Total Supplies				\$904.17
Total 2430 Dental Services				\$1,106.67

General Fund (10)

2440 Nursing Services

	<u>Elementary</u>	<u>Secondary</u>	<u>Federal</u>	<u>Total</u>
100 <u>Personnel Services – Salaries</u>				
100 Personnel Services – Salaries				217,440.77
Total Personnel Services – Salaries				\$217,440.77
200 <u>Personnel Services – Employee Benefits</u>				
210 Group Insurance – Contracted Provider				77,342.96
220 Social Security Contributions				16,434.41
230 PSERS Retirement Contributions				70,006.34
250 Unemployment Compensation				348.74
260 Workers' Compensation				1,352.97
270 Group Insurance – Self-Insurance				471.60
Total Personnel Services – Employee Benefits				\$165,957.02
500 <u>Other Purchased Services</u>				
530 Communications				38.18
Total Other Purchased Services				\$38.18
800 <u>Other Objects</u>				
810 Dues and Fees				60.00
Total Other Objects				\$60.00
Total 2440 Nursing Services				\$383,495.97

General Fund (10)

	<u>Elementary</u>	<u>Secondary</u>	<u>Federal</u>	<u>Total</u>
2450 Nonpublic Health Services				
100 Personnel Services – Salaries				
100 Personnel Services – Salaries				52,880.36
Total Personnel Services – Salaries				\$52,880.36
200 Personnel Services – Employee Benefits				
210 Group Insurance – Contracted Provider				17,992.92
220 Social Security Contributions				3,993.10
230 PSERS Retirement Contributions				17,223.17
250 Unemployment Compensation				46.38
260 Workers' Compensation				346.13
Total Personnel Services – Employee Benefits				\$39,601.70
400 Purchased Property Services				
430 Repairs and Maintenance Services				45.00
Total Purchased Property Services				\$45.00
600 Supplies				
610 General Supplies				1,156.28
Total Supplies				\$1,156.28
800 Other Objects				
810 Dues and Fees				20.00
Total Other Objects				\$20.00
Total 2450 Nonpublic Health Services				\$93,703.34

General Fund (10)

2490 Other Health Services

300 Purchased Professional and Technical Services

Elementary

Secondary

Federal

Total

330 Other Professional Services

1,256.00

Total Purchased Professional and Technical Services

\$1,256.00

Total 2490 Other Health Services

\$1,256.00

General Fund (10)

	<u>Elementary</u>	<u>Secondary</u>	<u>Federal</u>	<u>Total</u>
2500 Support Services – Business				
100 Personnel Services – Salaries				
100 Personnel Services – Salaries				361,731.89
Total Personnel Services – Salaries				\$361,731.89
200 Personnel Services – Employee Benefits				
210 Group Insurance – Contracted Provider				145,650.68
220 Social Security Contributions				25,445.61
230 PSERS Retirement Contributions				109,562.84
250 Unemployment Compensation				7,422.73
260 Workers' Compensation				2,416.21
270 Group Insurance – Self-Insurance				(5,707.33)
280 Other Post-Employment Benefits (OPEB)				11,500.00
Total Personnel Services – Employee Benefits				\$296,290.74
300 Purchased Professional and Technical Services				
330 Other Professional Services				40,823.87
340 Technical Services				3,721.25
Total Purchased Professional and Technical Services				\$44,545.12
400 Purchased Property Services				
430 Repairs and Maintenance Services				320.00
440 Rentals				28,833.53
Total Purchased Property Services				\$29,153.53
500 Other Purchased Services				
530 Communications				2,887.88
549 Other Advertising/Public Relations				7,291.69
550 Printing and Binding				616.56
580 Travel				51.78
Total Other Purchased Services				\$10,847.91
600 Supplies				
610 General Supplies				3,911.81
Total Supplies				\$3,911.81
800 Other Objects				
810 Dues and Fees				203.00
Total Other Objects				\$203.00
Total 2500 Support Services – Business				\$746,684.00

General Fund (10)

	<u>Elementary</u>	<u>Secondary</u>	<u>Federal</u>	<u>Total</u>
2510 Fiscal Services				
100 Personnel Services – Salaries				
100 Personnel Services – Salaries				361,731.89
Total Personnel Services – Salaries				\$361,731.89
200 Personnel Services – Employee Benefits				
210 Group Insurance – Contracted Provider				145,650.68
220 Social Security Contributions				25,445.61
230 PSERS Retirement Contributions				109,562.84
250 Unemployment Compensation				7,422.73
260 Workers' Compensation				2,416.21
270 Group Insurance – Self-Insurance				(5,707.33)
280 Other Post-Employment Benefits (OPEB)				11,500.00
Total Personnel Services – Employee Benefits				\$296,290.74
300 Purchased Professional and Technical Services				
330 Other Professional Services				40,823.87
340 Technical Services				3,721.25
Total Purchased Professional and Technical Services				\$44,545.12
400 Purchased Property Services				
430 Repairs and Maintenance Services				320.00
440 Rentals				26,493.53
Total Purchased Property Services				\$26,813.53
500 Other Purchased Services				
549 Other Advertising/Public Relations				7,291.69
580 Travel				51.78
Total Other Purchased Services				\$7,343.47
600 Supplies				
610 General Supplies				952.76
Total Supplies				\$952.76
800 Other Objects				
810 Dues and Fees				203.00
Total Other Objects				\$203.00
Total 2510 Fiscal Services				\$737,880.51

General Fund (10)

2511 Supervision of Fiscal Services - Head of Component

	<u>Elementary</u>	<u>Secondary</u>	<u>Federal</u>	<u>Total</u>
100 Personnel Services – Salaries				
100 Personnel Services – Salaries				150,239.45
Total Personnel Services – Salaries				\$150,239.45
200 Personnel Services – Employee Benefits				
210 Group Insurance – Contracted Provider				61,341.36
220 Social Security Contributions				11,388.18
230 PSERS Retirement Contributions				48,824.51
250 Unemployment Compensation				7,422.73
260 Workers' Compensation				2,416.21
270 Group Insurance – Self-Insurance				(2,139.28)
280 Other Post-Employment Benefits (OPEB)				5,750.00
Total Personnel Services – Employee Benefits				\$135,003.71
300 Purchased Professional and Technical Services				
330 Other Professional Services				8,905.00
Total Purchased Professional and Technical Services				\$8,905.00
400 Purchased Property Services				
430 Repairs and Maintenance Services				250.00
440 Rentals				1,554.20
Total Purchased Property Services				\$1,804.20
500 Other Purchased Services				
549 Other Advertising/Public Relations				7,291.69
580 Travel				51.78
Total Other Purchased Services				\$7,343.47
600 Supplies				
610 General Supplies				420.19
Total Supplies				\$420.19
800 Other Objects				
810 Dues and Fees				203.00
Total Other Objects				\$203.00
Total 2511 Supervision of Fiscal Services - Head of Component				\$303,919.02

General Fund (10)

	<u>Elementary</u>	<u>Secondary</u>	<u>Federal</u>	<u>Total</u>
2513 Receiving and Disbursing Funds Services				
100 Personnel Services – Salaries				
100 Personnel Services – Salaries				38,386.32
Total Personnel Services – Salaries				\$38,386.32
200 Personnel Services – Employee Benefits				
210 Group Insurance – Contracted Provider				23,421.00
220 Social Security Contributions				2,887.03
230 PSERS Retirement Contributions				12,502.44
Total Personnel Services – Employee Benefits				\$38,810.47
600 Supplies				
610 General Supplies				17.10
Total Supplies				\$17.10
Total 2513 Receiving and Disbursing Funds Services				\$77,213.89

General Fund (10)

	<u>Elementary</u>	<u>Secondary</u>	<u>Federal</u>	<u>Total</u>
2514 Payroll Services				
100 Personnel Services – Salaries				
100 Personnel Services – Salaries				105,056.94
Total Personnel Services – Salaries				\$105,056.94
200 Personnel Services – Employee Benefits				
210 Group Insurance – Contracted Provider				33,473.64
220 Social Security Contributions				7,928.29
230 PSERS Retirement Contributions				34,217.07
Total Personnel Services – Employee Benefits				\$75,619.00
300 Purchased Professional and Technical Services				
330 Other Professional Services				2,218.87
340 Technical Services				3,721.25
Total Purchased Professional and Technical Services				\$5,940.12
400 Purchased Property Services				
440 Rentals				16,456.19
Total Purchased Property Services				\$16,456.19
600 Supplies				
610 General Supplies				435.47
Total Supplies				\$435.47
Total 2514 Payroll Services				\$203,507.72

General Fund (10)

	<u>Elementary</u>	<u>Secondary</u>	<u>Federal</u>	<u>Total</u>
2515 Financial Accounting Services				
100 Personnel Services – Salaries				
100 Personnel Services – Salaries				62,472.00
Total Personnel Services – Salaries				\$62,472.00
200 Personnel Services – Employee Benefits				
210 Group Insurance – Contracted Provider				25,279.18
220 Social Security Contributions				3,056.29
230 PSERS Retirement Contributions				13,223.33
270 Group Insurance – Self-Insurance				(3,568.05)
280 Other Post-Employment Benefits (OPEB)				5,750.00
Total Personnel Services – Employee Benefits				\$43,740.75
300 Purchased Professional and Technical Services				
330 Other Professional Services				6,700.00
Total Purchased Professional and Technical Services				\$6,700.00
400 Purchased Property Services				
430 Repairs and Maintenance Services				70.00
440 Rentals				8,483.14
Total Purchased Property Services				\$8,553.14
600 Supplies				
610 General Supplies				80.00
Total Supplies				\$80.00
Total 2515 Financial Accounting Services				\$121,545.89

General Fund (10)

2516 Internal Auditing Services

300 Purchased Professional and Technical Services

330 Other Professional Services

Total Purchased Professional and Technical Services

Total 2516 Internal Auditing Services

Elementary

Secondary

Federal

Total

23,000.00

\$23,000.00

\$23,000.00

General Fund (10)

	<u>Elementary</u>	<u>Secondary</u>	<u>Federal</u>	<u>Total</u>
2519 Other Fiscal Services				
100 Personnel Services – Salaries				
100 Personnel Services – Salaries				5,577.18
Total Personnel Services – Salaries				\$5,577.18
200 Personnel Services – Employee Benefits				
210 Group Insurance – Contracted Provider				2,135.50
220 Social Security Contributions				185.82
230 PSERS Retirement Contributions				795.49
Total Personnel Services – Employee Benefits				\$3,116.81
Total 2519 Other Fiscal Services				\$8,693.99

General Fund (10)

	<u>Elementary</u>	<u>Secondary</u>	<u>Federal</u>	<u>Total</u>
2520 Purchasing Services				
400 <u>Purchased Property Services</u>				
440 Rentals				2,340.00
Total Purchased Property Services				\$2,340.00
500 <u>Other Purchased Services</u>				
530 Communications				2,887.88
550 Printing and Binding				616.56
Total Other Purchased Services				\$3,504.44
600 <u>Supplies</u>				
610 General Supplies				2,959.05
Total Supplies				\$2,959.05
Total 2520 Purchasing Services				\$8,803.49

General Fund (10)

	<u>Elementary</u>	<u>Secondary</u>	<u>Federal</u>	<u>Total</u>
2600 Operation and Maintenance of Plant Services				
100 Personnel Services – Salaries				
100 Personnel Services – Salaries				1,028,489.62
Total Personnel Services – Salaries				\$1,028,489.62
200 Personnel Services – Employee Benefits				
210 Group Insurance – Contracted Provider				541,526.76
220 Social Security Contributions				75,861.38
230 PSERS Retirement Contributions				319,584.30
250 Unemployment Compensation				1,551.82
260 Workers' Compensation				4,802.00
270 Group Insurance – Self-Insurance				3,000.00
Total Personnel Services – Employee Benefits				\$946,326.26
300 Purchased Professional and Technical Services				
324 Professional Educational Services – Employee Training and Development Services				395.00
330 Other Professional Services				59,787.35
350 Security / Safety Services				4,386.16
Total Purchased Professional and Technical Services				\$64,568.51
400 Purchased Property Services				
410 Cleaning Services				22,942.56
420 Utility Services				117,551.62
430 Repairs and Maintenance Services				323,217.17
440 Rentals				6,321.90
450 Construction Services				1,765.00
460 Extermination Services				14,253.62
Total Purchased Property Services				\$486,051.87
500 Other Purchased Services				
521 Fire Insurance				158.60
522 Automotive Liability Insurance				31,458.00
523 General Property and Liability Insurance				125,915.00
530 Communications				57,121.14
Total Other Purchased Services				\$214,652.74
600 Supplies				
610 General Supplies	130,224.02	149,493.02		279,717.04
620 Energy				527,938.20
640 Books and Periodicals				39.99
Total Supplies	\$130,224.02	\$149,493.02		\$807,695.23
700 Property				
762 Capitalized Equipment - Replacement				2,491.00
Total Property				\$2,491.00
800 Other Objects				
810 Dues and Fees				2,687.75
Total Other Objects				\$2,687.75
Total 2600 Operation and Maintenance of Plant Services	\$130,224.02	\$149,493.02		\$3,552,962.98

General Fund (10)

2610 Supervision of Operation and Maintenance of Plant Services

	<u>Elementary</u>	<u>Secondary</u>	<u>Federal</u>	<u>Total</u>
100 Personnel Services – Salaries				
100 Personnel Services – Salaries				100,787.65
Total Personnel Services – Salaries				\$100,787.65
200 Personnel Services – Employee Benefits				
210 Group Insurance – Contracted Provider				56,278.56
220 Social Security Contributions				7,497.24
230 PSERS Retirement Contributions				32,826.68
Total Personnel Services – Employee Benefits				\$96,602.48
300 Purchased Professional and Technical Services				
324 Professional Educational Services – Employee Training and Development Services				245.00
Total Purchased Professional and Technical Services				\$245.00
Total 2610 Supervision of Operation and Maintenance of Plant Services				\$197,635.13

General Fund (10)

	<u>Elementary</u>	<u>Secondary</u>	<u>Federal</u>	<u>Total</u>
2619 Supervision of Operation and Maintenance of Plant Services – All Other Supervision				
100 Personnel Services – Salaries				
100 Personnel Services – Salaries				100,787.65
Total Personnel Services – Salaries				\$100,787.65
200 Personnel Services – Employee Benefits				
210 Group Insurance – Contracted Provider				56,278.56
220 Social Security Contributions				7,497.24
230 PSERS Retirement Contributions				32,826.68
Total Personnel Services – Employee Benefits				\$96,602.48
300 Purchased Professional and Technical Services				
324 Professional Educational Services – Employee Training and Development Services				245.00
Total Purchased Professional and Technical Services				\$245.00
Total 2619 Supervision of Operation and Maintenance of Plant Services – All Other Supervision				\$197,635.13

General Fund (10)

	<u>Elementary</u>	<u>Secondary</u>	<u>Federal</u>	<u>Total</u>
2620 Operation of Buildings Services				
100 Personnel Services – Salaries				
100 Personnel Services – Salaries				735,989.49
Total Personnel Services – Salaries				\$735,989.49
200 Personnel Services – Employee Benefits				
210 Group Insurance – Contracted Provider				414,482.88
220 Social Security Contributions				53,841.82
230 PSERS Retirement Contributions				231,368.27
250 Unemployment Compensation				1,551.82
260 Workers' Compensation				4,802.00
Total Personnel Services – Employee Benefits				\$706,046.79
300 Purchased Professional and Technical Services				
330 Other Professional Services				788.00
Total Purchased Professional and Technical Services				\$788.00
400 Purchased Property Services				
410 Cleaning Services				22,942.56
420 Utility Services				117,551.62
430 Repairs and Maintenance Services				296,153.88
440 Rentals				5,733.28
450 Construction Services				1,765.00
460 Extermination Services				14,253.62
Total Purchased Property Services				\$458,399.96
500 Other Purchased Services				
521 Fire Insurance				158.60
522 Automotive Liability Insurance				31,458.00
523 General Property and Liability Insurance				125,915.00
530 Communications				47,581.14
Total Other Purchased Services				\$205,112.74
600 Supplies				
610 General Supplies	88,478.45	106,838.09		195,316.54
620 Energy				520,244.12
640 Books and Periodicals				39.99
Total Supplies	\$88,478.45	\$106,838.09		\$715,600.65
700 Property				
762 Capitalized Equipment - Replacement				2,491.00
Total Property				\$2,491.00
800 Other Objects				
810 Dues and Fees				2,687.75
Total Other Objects				\$2,687.75
Total 2620 Operation of Buildings Services	\$88,478.45	\$106,838.09		\$2,827,116.38

General Fund (10)

	<u>Elementary</u>	<u>Secondary</u>	<u>Federal</u>	<u>Total</u>
2630 Care and Upkeep of Grounds Services				
100 Personnel Services – Salaries				
100 Personnel Services – Salaries				140,065.76
Total Personnel Services – Salaries				\$140,065.76
200 Personnel Services – Employee Benefits				
210 Group Insurance – Contracted Provider				62,037.18
220 Social Security Contributions				10,594.47
230 PSERS Retirement Contributions				45,619.37
270 Group Insurance – Self-Insurance				3,000.00
Total Personnel Services – Employee Benefits				\$121,251.02
300 Purchased Professional and Technical Services				
324 Professional Educational Services – Employee Training and Development Services				150.00
Total Purchased Professional and Technical Services				\$150.00
400 Purchased Property Services				
430 Repairs and Maintenance Services				5,124.08
440 Rentals				588.62
Total Purchased Property Services				\$5,712.70
600 Supplies				
610 General Supplies	30,157.48	31,066.83		61,224.31
Total Supplies	\$30,157.48	\$31,066.83		\$61,224.31
Total 2630 Care and Upkeep of Grounds Services	\$30,157.48	\$31,066.83		\$328,403.79

General Fund (10)

	<u>Elementary</u>	<u>Secondary</u>	<u>Federal</u>	<u>Total</u>
2640 Care and Upkeep of Equipment Services				
100 <u>Personnel Services – Salaries</u>				
100 Personnel Services – Salaries				804.29
Total Personnel Services – Salaries				\$804.29
200 <u>Personnel Services – Employee Benefits</u>				
220 Social Security Contributions				60.57
230 PSERS Retirement Contributions				261.95
Total Personnel Services – Employee Benefits				\$322.52
Total 2640 Care and Upkeep of Equipment Services				\$1,126.81

General Fund (10)

	<u>Elementary</u>	<u>Secondary</u>	<u>Federal</u>	<u>Total</u>
2650 Vehicle Operation and Maintenance Services (Other Than Student Transportation Vehicles)				
100 Personnel Services – Salaries				
100 Personnel Services – Salaries				.5,318.01
Total Personnel Services – Salaries				\$5,318.01
200 Personnel Services – Employee Benefits				
210 Group Insurance – Contracted Provider				4,418.26
220 Social Security Contributions				398.43
230 PSERS Retirement Contributions				1,732.08
Total Personnel Services – Employee Benefits				\$6,548.77
400 Purchased Property Services				
430 Repairs and Maintenance Services				13,665.21
Total Purchased Property Services				\$13,665.21
600 Supplies				
610 General Supplies	2,181.84	2,181.85		4,363.69
620 Energy				7,694.08
Total Supplies	\$2,181.84	\$2,181.85		\$12,057.77
Total 2650 Vehicle Operation and Maintenance Services (Other Than Student Transportation Vehicles)	\$2,181.84	\$2,181.85		\$37,589.76

General Fund (10)

	<u>Elementary</u>	<u>Secondary</u>	<u>Federal</u>	<u>Total</u>
2660 Safety and Security Services				
100 Personnel Services – Salaries				
100 Personnel Services – Salaries				45,524.42
Total Personnel Services – Salaries				\$45,524.42
200 Personnel Services – Employee Benefits				
210 Group Insurance – Contracted Provider				4,309.88
220 Social Security Contributions				3,468.85
230 PSERS Retirement Contributions				7,775.95
Total Personnel Services – Employee Benefits				\$15,554.68
300 Purchased Professional and Technical Services				
330 Other Professional Services				58,999.35
350 Security / Safety Services				4,386.16
Total Purchased Professional and Technical Services				\$63,385.51
400 Purchased Property Services				
430 Repairs and Maintenance Services				8,274.00
Total Purchased Property Services				\$8,274.00
500 Other Purchased Services				
530 Communications				9,540.00
Total Other Purchased Services				\$9,540.00
600 Supplies				
610 General Supplies	9,406.25	9,406.25		18,812.50
Total Supplies	\$9,406.25	\$9,406.25		\$18,812.50
Total 2660 Safety and Security Services	\$9,406.25	\$9,406.25		\$161,091.11

General Fund (10)

	<u>Elementary</u>	<u>Secondary</u>	<u>Federal</u>	<u>Total</u>
2700 Student Transportation Services				
100 Personnel Services – Salaries				
100 Personnel Services – Salaries				597,222.67
Total Personnel Services – Salaries				\$597,222.67
200 Personnel Services – Employee Benefits				
210 Group Insurance – Contracted Provider				110,830.71
220 Social Security Contributions				45,584.30
230 PSERS Retirement Contributions				185,575.09
250 Unemployment Compensation				165.45
260 Workers' Compensation				3,079.92
270 Group Insurance – Self-Insurance				12,695.26
Total Personnel Services – Employee Benefits				\$357,930.73
300 Purchased Professional and Technical Services				
324 Professional Educational Services – Employee Training and Development Services				80.00
330 Other Professional Services				2,985.00
Total Purchased Professional and Technical Services				\$3,065.00
400 Purchased Property Services				
430 Repairs and Maintenance Services				25,725.70
440 Rentals				292,144.00
Total Purchased Property Services				\$317,869.70
500 Other Purchased Services				
513 Contracted Carriers				4,460.14
516 Student Transportation Services From the IU				59,205.78
530 Communications				848.24
550 Printing and Binding				2,246.50
Total Other Purchased Services				\$66,760.66
600 Supplies				
610 General Supplies				21,127.56
620 Energy				39,939.47
650 Supplies & Fees – Technology Related				9,927.40
Total Supplies				\$70,994.43
Total 2700 Student Transportation Services				\$1,413,843.19

General Fund (10)

	<u>Elementary</u>	<u>Secondary</u>	<u>Federal</u>	<u>Total</u>
2710 Supervision of Student Transportation Services				
100 Personnel Services – Salaries				
100 Personnel Services – Salaries				32,084.72
Total Personnel Services – Salaries				\$32,084.72
200 Personnel Services – Employee Benefits				
210 Group Insurance – Contracted Provider				21,781.56
220 Social Security Contributions				2,413.74
230 PSERS Retirement Contributions				10,449.90
Total Personnel Services – Employee Benefits				\$34,645.20
600 Supplies				
610 General Supplies				203.67
Total Supplies				\$203.67
Total 2710 Supervision of Student Transportation Services				\$66,933.59

General Fund (10)

2711 Supervision of Student Transportation Services – Head of Component

	<u>Elementary</u>	<u>Secondary</u>	<u>Federal</u>	<u>Total</u>
100 <u>Personnel Services – Salaries</u>				
100 Personnel Services – Salaries				32,084.72
Total Personnel Services – Salaries				\$32,084.72
200 <u>Personnel Services – Employee Benefits</u>				
210 Group Insurance – Contracted Provider				21,781.56
220 Social Security Contributions				2,413.74
230 PSERS Retirement Contributions				10,449.90
Total Personnel Services – Employee Benefits				\$34,645.20
600 <u>Supplies</u>				
610 General Supplies				203.67
Total Supplies				\$203.67
Total 2711 Supervision of Student Transportation Services – Head of Component				\$66,933.59

General Fund (10)

	<u>Elementary</u>	<u>Secondary</u>	<u>Federal</u>	<u>Total</u>
2720 Vehicle Operation Services				
100 Personnel Services – Salaries				
100 Personnel Services – Salaries				464,675.97
Total Personnel Services – Salaries				\$464,675.97
200 Personnel Services – Employee Benefits				
210 Group Insurance – Contracted Provider				47,431.93
220 Social Security Contributions				35,543.48
230 PSERS Retirement Contributions				143,194.87
250 Unemployment Compensation				161.19
260 Workers' Compensation				3,048.00
270 Group Insurance – Self-Insurance				11,552.71
Total Personnel Services – Employee Benefits				\$240,932.18
300 Purchased Professional and Technical Services				
324 Professional Educational Services – Employee Training and Development Services				80.00
330 Other Professional Services				2,985.00
Total Purchased Professional and Technical Services				\$3,065.00
400 Purchased Property Services				
430 Repairs and Maintenance Services				5,944.40
440 Rentals				292,144.00
Total Purchased Property Services				\$298,088.40
500 Other Purchased Services				
513 Contracted Carriers				4,460.14
516 Student Transportation Services From the IU				59,205.78
530 Communications				848.24
550 Printing and Binding				2,246.50
Total Other Purchased Services				\$66,760.66
600 Supplies				
610 General Supplies				20,570.99
620 Energy				39,939.47
650 Supplies & Fees – Technology Related				9,927.40
Total Supplies				\$70,437.86
Total 2720 Vehicle Operation Services				\$1,143,960.07

General Fund (10)

	<u>Elementary</u>	<u>Secondary</u>	<u>Federal</u>	<u>Total</u>
2740 Vehicle Servicing and Maintenance Services				
100 Personnel Services – Salaries				
100 Personnel Services – Salaries				51,500.16
Total Personnel Services – Salaries				\$51,500.16
200 Personnel Services – Employee Benefits				
210 Group Insurance – Contracted Provider				32,507.34
220 Social Security Contributions				3,888.95
230 PSERS Retirement Contributions				16,773.46
Total Personnel Services – Employee Benefits				\$53,169.75
400 Purchased Property Services				
430 Repairs and Maintenance Services				19,781.30
Total Purchased Property Services				\$19,781.30
600 Supplies				
610 General Supplies				133.96
Total Supplies				\$133.96
Total 2740 Vehicle Servicing and Maintenance Services				\$124,585.17

General Fund (10)

	<u>Elementary</u>	<u>Secondary</u>	<u>Federal</u>	<u>Total</u>
2750 Nonpublic Transportation				
100 Personnel Services – Salaries				
100 Personnel Services – Salaries				48,961.82
Total Personnel Services – Salaries				\$48,961.82
200 Personnel Services – Employee Benefits				
210 Group Insurance – Contracted Provider				9,109.88
220 Social Security Contributions				3,738.13
230 PSERS Retirement Contributions				15,156.86
250 Unemployment Compensation				4.26
260 Workers' Compensation				31.92
270 Group Insurance – Self-Insurance				1,142.55
Total Personnel Services – Employee Benefits				\$29,183.60
600 Supplies				
610 General Supplies				218.94
Total Supplies				\$218.94
Total 2750 Nonpublic Transportation				\$78,364.36

General Fund (10)

2800 Support Services – Central

	<u>Elementary</u>	<u>Secondary</u>	<u>Federal</u>	<u>Total</u>
100 Personnel Services – Salaries				
100 Personnel Services – Salaries			8,024.00	217,476.21
Total Personnel Services – Salaries			\$8,024.00	\$217,476.21
200 Personnel Services – Employee Benefits				
210 Group Insurance – Contracted Provider				92,230.25
220 Social Security Contributions			606.65	16,357.63
230 PSERS Retirement Contributions			2,613.42	70,832.01
250 Unemployment Compensation				176.52
260 Workers' Compensation				1,317.26
Total Personnel Services – Employee Benefits			\$3,220.07	\$180,913.67
300 Purchased Professional and Technical Services				
324 Professional Educational Services – Employee Training and Development Services				1,053.75
330 Other Professional Services			13,200.00	13,200.00
340 Technical Services				38,330.16
Total Purchased Professional and Technical Services			\$13,200.00	\$52,583.91
400 Purchased Property Services				
430 Repairs and Maintenance Services				59,787.77
440 Rentals				25,204.07
Total Purchased Property Services				\$84,991.84
500 Other Purchased Services				
530 Communications				23,400.29
580 Travel				368.06
Total Other Purchased Services				\$23,768.35
600 Supplies				
610 General Supplies				55,123.59
650 Supplies & Fees – Technology Related				101,090.83
Total Supplies				\$156,214.42
700 Property				
766 Capitalized Technology Hardware and Equipment – Replacement				16,873.75
768 Capitalized Technology Software - Replacement				5,285.00
Total Property				\$22,158.75
800 Other Objects				
810 Dues and Fees				213.00
Total Other Objects				\$213.00
Total 2800 Support Services – Central			\$24,444.07	\$738,320.15

General Fund (10)

2810 Planning, Research, Development and Evaluation Services

	<u>Elementary</u>	<u>Secondary</u>	<u>Federal</u>	<u>Total</u>
100 Personnel Services – Salaries				
100 Personnel Services – Salaries				209,452.21
Total Personnel Services – Salaries				\$209,452.21
200 Personnel Services – Employee Benefits				
210 Group Insurance – Contracted Provider				92,230.25
220 Social Security Contributions				15,750.98
230 PSERS Retirement Contributions				68,218.59
250 Unemployment Compensation				176.52
260 Workers' Compensation				1,317.26
Total Personnel Services – Employee Benefits				\$177,693.60
300 Purchased Professional and Technical Services				
340 Technical Services				38,330.16
Total Purchased Professional and Technical Services				\$38,330.16
400 Purchased Property Services				
430 Repairs and Maintenance Services				59,787.77
440 Rentals				25,204.07
Total Purchased Property Services				\$84,991.84
500 Other Purchased Services				
530 Communications				23,400.29
Total Other Purchased Services				\$23,400.29
600 Supplies				
610 General Supplies				55,123.59
650 Supplies & Fees – Technology Related				101,090.83
Total Supplies				\$156,214.42
700 Property				
766 Capitalized Technology Hardware and Equipment – Replacement				16,873.75
768 Capitalized Technology Software - Replacement				5,285.00
Total Property				\$22,158.75
Total 2810 Planning, Research, Development and Evaluation Services				\$712,241.27

General Fund (10)

2830 Staff Services

300 Purchased Professional and Technical Services

Elementary

Secondary

Federal

Total

324 Professional Educational Services – Employee Training and Development Services

1,053.75

Total Purchased Professional and Technical Services

\$1,053.75

500 Other Purchased Services

580 Travel

368.06

Total Other Purchased Services

\$368.06

800 Other Objects

810 Dues and Fees

213.00

Total Other Objects

\$213.00

Total 2830 Staff Services

\$1,634.81

General Fund (10)

	<u>Elementary</u>	<u>Secondary</u>	<u>Federal</u>	<u>Total</u>
2834 Staff Development Services – Non-Instructional, Certified Staff Only				
300 <u>Purchased Professional and Technical Services</u>				
324 Professional Educational Services – Employee Training and Development Services				1,053.75
Total Purchased Professional and Technical Services				\$1,053.75
500 <u>Other Purchased Services</u>				
580 Travel				368.06
Total Other Purchased Services				\$368.06
800 <u>Other Objects</u>				
810 Dues and Fees				213.00
Total Other Objects				\$213.00
Total 2834 Staff Development Services – Non-Instructional, Certified Staff Only				\$1,634.81

General Fund (10)

	<u>Elementary</u>	<u>Secondary</u>	<u>Federal</u>	<u>Total</u>
2850 State and Federal Agency Liaison Services				
100 Personnel Services – Salaries				
100 Personnel Services – Salaries			8,024.00	8,024.00
Total Personnel Services – Salaries			\$8,024.00	\$8,024.00
200 Personnel Services – Employee Benefits				
220 Social Security Contributions			606.65	606.65
230 PSERS Retirement Contributions			2,613.42	2,613.42
Total Personnel Services – Employee Benefits			\$3,220.07	\$3,220.07
300 Purchased Professional and Technical Services				
330 Other Professional Services			13,200.00	13,200.00
Total Purchased Professional and Technical Services			\$13,200.00	\$13,200.00
Total 2850 State and Federal Agency Liaison Services			\$24,444.07	\$24,444.07

General Fund (10)

	<u>Total</u>
3000 Operation of Non-Instructional Services	
100 Personnel Services – Salaries	
100 Personnel Services – Salaries	616,221.11
Total Personnel Services – Salaries	\$616,221.11
200 Personnel Services – Employee Benefits	
210 Group Insurance – Contracted Provider	34,534.68
220 Social Security Contributions	46,781.48
230 PSERS Retirement Contributions	181,527.94
250 Unemployment Compensation	2,870.38
260 Workers' Compensation	3,034.54
Total Personnel Services – Employee Benefits	\$268,749.02
300 Purchased Professional and Technical Services	
330 Other Professional Services	3,300.00
Total Purchased Professional and Technical Services	\$3,300.00
400 Purchased Property Services	
410 Cleaning Services	972.00
440 Rentals	3,161.21
Total Purchased Property Services	\$4,133.21
500 Other Purchased Services	
549 Other Advertising/Public Relations	100.00
580 Travel	327.72
Total Other Purchased Services	\$427.72
600 Supplies	
610 General Supplies	185,183.58
630 Food	2,378.29
640 Books and Periodicals	768.50
Total Supplies	\$188,330.37
800 Other Objects	
810 Dues and Fees	3,865.00
890 Miscellaneous Expenditures	1,316.00
Total Other Objects	\$5,181.00
Total 3000 Operation of Non-Instructional Services	\$1,086,342.43

General Fund (10)

3200 Student Activities

	<u>Elementary</u>	<u>Secondary</u>	<u>Federal</u>	<u>Total</u>
100 <u>Personnel Services – Salaries</u>				
100 Personnel Services – Salaries				563,361.57
Total Personnel Services – Salaries				\$563,361.57
200 <u>Personnel Services – Employee Benefits</u>				
210 Group Insurance – Contracted Provider				34,534.68
220 Social Security Contributions				42,774.49
230 PSERS Retirement Contributions				168,920.33
250 Unemployment Compensation				2,840.15
260 Workers' Compensation				2,808.89
Total Personnel Services – Employee Benefits				\$251,878.54
300 <u>Purchased Professional and Technical Services</u>				
330 Other Professional Services				3,300.00
Total Purchased Professional and Technical Services				\$3,300.00
400 <u>Purchased Property Services</u>				
410 Cleaning Services				972.00
440 Rentals				3,161.21
Total Purchased Property Services				\$4,133.21
600 <u>Supplies</u>				
610 General Supplies				175,233.19
630 Food				1,927.55
Total Supplies				\$177,160.74
800 <u>Other Objects</u>				
810 Dues and Fees				3,865.00
890 Miscellaneous Expenditures				1,316.00
Total Other Objects				\$5,181.00
Total 3200 Student Activities				\$1,005,015.06

General Fund (10)

	<u>Elementary</u>	<u>Secondary</u>	<u>Federal</u>	<u>Total</u>
3300 Community Services				
100 Personnel Services – Salaries				
100 Personnel Services – Salaries			496.00	52,859.54
Total Personnel Services – Salaries			\$496.00	\$52,859.54
200 Personnel Services – Employee Benefits				
220 Social Security Contributions			37.19	4,006.99
230 PSERS Retirement Contributions			161.55	12,607.61
250 Unemployment Compensation				30.23
260 Workers' Compensation				225.65
Total Personnel Services – Employee Benefits			\$198.74	\$16,870.48
500 Other Purchased Services				
580 Travel			327.72	327.72
Total Other Purchased Services			\$327.72	\$327.72
600 Supplies				
610 General Supplies			9,465.17	9,950.39
630 Food			450.74	450.74
640 Books and Periodicals			768.50	768.50
Total Supplies			\$10,684.41	\$11,169.63
Total 3300 Community Services			\$11,706.87	\$81,227.37

General Fund (10)

	<u>Elementary</u>	<u>Secondary</u>	<u>Federal</u>	<u>Total</u>
3400 Scholarships and Awards				
500 <u>Other Purchased Services</u>				
549 Other Advertising/Public Relations				100.00
Total Other Purchased Services				\$100.00
Total 3400 Scholarships and Awards				\$100.00

General Fund (10)

4000 Facilities Acquisition, Construction and Improvement Services

Total

400 Purchased Property Services

450 Construction Services

284,460.00

Total Purchased Property Services

\$284,460.00

Total 4000 Facilities Acquisition, Construction and Improvement Services

\$284,460.00

General Fund (10)

	<u>Elementary</u>	<u>Secondary</u>	<u>Federal</u>	<u>Total</u>
4600 Existing Building Improvement Services				
400 <u>Purchased Property Services</u>				
450 Construction Services				284,460.00
Total Purchased Property Services				\$284,460.00
Total 4600 Existing Building Improvement Services				\$284,460.00

General Fund (10)

5000 Other Expenditures and Financing Uses	Total
800 <u>Other Objects</u>	
830 Interest	218,532.36
Total Other Objects	\$218,532.36
900 <u>Other Uses of Funds</u>	
910 Redemption of Principal	1,389,767.07
Total Other Uses of Funds	\$1,389,767.07
Total 5000 Other Expenditures and Financing Uses	\$1,608,299.43

General Fund (10)

	<u>Elementary</u>	<u>Secondary</u>	<u>Federal</u>	<u>Total</u>
5100 Debt Service / Other Expenditures and Financing Uses				
800 <u>Other Objects</u>				
830 Interest				218,532.36
Total Other Objects				\$218,532.36
900 <u>Other Uses of Funds</u>				
910 Redemption of Principal				1,389,767.07
Total Other Uses of Funds				\$1,389,767.07
Total 5100 Debt Service / Other Expenditures and Financing Uses				\$1,608,299.43

General Fund (10)

	<u>Elementary</u>	<u>Secondary</u>	<u>Federal</u>	<u>Total</u>
5110 Debt Service				
800 <u>Other Objects</u>				
830 Interest				218,532.36
Total Other Objects				\$218,532.36
900 <u>Other Uses of Funds</u>				
910 Redemption of Principal				1,389,767.07
Total Other Uses of Funds				\$1,389,767.07
Total 5110 Debt Service				\$1,608,299.43

	<u>General Fund(10)</u>	<u>Public Purpose Trust(27)</u>	<u>Other Compt Approved (28)</u>	<u>Athletic / Activity(29)</u>	<u>Capital Reserve (690, 1850)(31)</u>
1000 <u>Instruction</u>					
1100 Regular Programs - Elementary / Secondary	16,936,907.06				
1200 Special Programs - Elementary / Secondary	6,927,441.82				
1300 Vocational Education	1,284,669.85				
1400 Other Instructional Programs - Elementary / Secondary	511,429.31				
1500 Nonpublic School Programs	12,304.33				
Total Instruction	\$25,672,752.37				
2000 <u>Support Services</u>					
2100 Support Services - Students	1,152,378.12				
2200 Support Services - Instructional Staff	1,012,209.75				
2300 Support Services - Administration	2,357,605.50				
2400 Support Services - Pupil Health	491,277.48				
2500 Support Services - Business	746,684.00				
2600 Operation and Maintenance of Plant Services	3,552,962.98				
2700 Student Transportation Services	1,413,843.19				
2800 Support Services - Central	738,320.15				
Total Support Services	\$11,465,281.17				
3000 <u>Operation of Non-Instructional Services</u>					
3200 Student Activities	1,005,015.06				
3300 Community Services	81,227.37				
3400 Scholarships and Awards	100.00				
Total Operation of Non-Instructional Services	\$1,086,342.43				
4000 <u>Facilities Acquisition, Construction and Improvement Services</u>					
4600 Existing Building Improvement Services	284,460.00				
Total Facilities Acquisition, Construction and Improvement	\$284,460.00				
5000 <u>Other Expenditures and Financing Uses</u>					
5100 Debt Service / Other Expenditures and Financing Uses	1,608,299.43				
Total Other Expenditures and Financing Uses	\$1,608,299.43				
TOTAL ACTUAL EXPENDITURES & OTHER FINANCING USES	\$40,117,135.40				

	<u>Capital Reserve (1431)(32)</u>	<u>Other Capital Projects Fund(39)</u>	<u>Debt Service(40)</u>	<u>Permanent(90)</u>	<u>Total</u>
1000 Instruction					
1100 Regular Programs - Elementary / Secondary					16,936,907.06
1200 Special Programs - Elementary / Secondary					6,927,441.82
1300 Vocational Education					1,284,669.85
1400 Other Instructional Programs - Elementary / Secondary					511,429.31
1500 Nonpublic School Programs					12,304.33
Total Instruction					\$25,672,752.37
2000 Support Services					
2100 Support Services - Students					1,152,378.12
2200 Support Services - Instructional Staff					1,012,209.75
2300 Support Services - Administration					2,357,605.50
2400 Support Services - Pupil Health					491,277.48
2500 Support Services - Business					746,684.00
2600 Operation and Maintenance of Plant Services					3,552,962.98
2700 Student Transportation Services					1,413,843.19
2800 Support Services - Central					738,320.15
Total Support Services					\$11,465,281.17
3000 Operation of Non-Instructional Services					
3200 Student Activities					1,005,015.06
3300 Community Services					81,227.37
3400 Scholarships and Awards					100.00
Total Operation of Non-Instructional Services					\$1,086,342.43
4000 Facilities Acquisition, Construction and Improvement Services					
4600 Existing Building Improvement Services					284,460.00
Total Facilities Acquisition, Construction and Improvement					\$284,460.00
5000 Other Expenditures and Financing Uses					
5100 Debt Service / Other Expenditures and Financing Uses					1,608,299.43
Total Other Expenditures and Financing Uses					\$1,608,299.43
TOTAL ACTUAL EXPENDITURES & OTHER FINANCING USES					\$40,117,135.40

PSERS Salary Data (Salary Data should relate to the General Fund only)

Amount Description	Amount
Total Salary Base for salaries subject to PSERS withholding	16,454,691.90
Total Federally Funded salaries subject to PSERS withholding	<u>507,590.56</u>

Title I Expenditure Data

Amount Description	Amount
Expenditures Funded with Current Title I Funds	711,215.36
Expenditures Funded with Carry over Title I Funds	
Total Title I Expenditure Data	<u>\$711,215.36</u>

Benefits for Staff Relative to Collective Bargaining Agreements

	OBJECT	COVERED	NOT COVERED	TOTAL
10 General Fund	No Self Insurance data to report			
	211 Medical Insurance	5,417,638.78		5,417,638.78
	212 Dental Insurance	258,868.89		258,868.89
	215 Eye Care Insurance	22,591.94		22,591.94
	216 Prescription Insurance			
	271 Self-Insurance Medical Benefits			
	272 Self-Insurance Dental Benefits			
	275 Self-Insurance Eye Care Benefits			
	276 Self-Insurance Prescription Benefits			
	FUND TOTAL		\$5,699,099.61	
50 Enterprise Fund	No Self Insurance data to report			
	211 Medical Insurance			
	212 Dental Insurance			
	215 Eye Care Insurance			
	216 Prescription Insurance			
	271 Self-Insurance Medical Benefits			
	272 Self-Insurance Dental Benefits			
	275 Self-Insurance Eye Care Benefits			
	276 Self-Insurance Prescription Benefits			
	FUND TOTAL			
60 Internal Service Fund	No Self Insurance data to report			
	211 Medical Insurance			
	212 Dental Insurance			
	215 Eye Care Insurance			
	216 Prescription Insurance			
	271 Self-Insurance Medical Benefits			
	272 Self-Insurance Dental Benefits			
	275 Self-Insurance Eye Care Benefits			
	276 Self-Insurance Prescription Benefits			
	FUND TOTAL			
Total of All Funds		\$5,699,099.61		\$5,699,099.61

Function	Special Education (Prior Year)	Nonspecial Education (Prior Year)	Total (Prior Year)	Special Education (Current Year)	Nonspecial Education (Current Year)	Total (Current Year)
2120 Guidance Services	102,218.86	356,161.68	458,380.54	86,279.76	305,900.96	392,180.72
2140 Psychological Services	71,323.98	248,514.49	319,838.47	46,623.83	165,302.65	211,926.48
2150 Speech Pathology and Audiology Services						
2160 Social Work Services	61,500.29	214,285.78	275,786.07	62,275.14	220,793.69	283,068.83
2260 Instruction and Curriculum Development Services	131,756.72	459,080.56	590,837.28	96,536.07	342,264.24	438,800.31
2350 Legal and Accounting Services	35,720.35	124,460.60	160,180.95	24,978.85	82,821.38	107,800.23
2420 Medical Services	1,835.43	17,157.55	18,992.98	2,077.41	9,638.09	11,715.50
2440 Nursing Services	82,401.30	287,111.27	369,512.57	84,369.11	299,126.86	383,495.97
2700 Student Transportation Services	221,967.99	773,404.17	995,372.16	253,474.75	898,683.21	1,152,157.96
Total	\$708,724.92	\$2,480,176.10	\$3,188,901.02	\$656,614.92	\$2,324,531.08	\$2,981,146.00

(PRINCIPAL AMOUNTS ONLY)

GOVERNMENTAL FUNDS/ ACTIVITIES

	Short-Term Borrowing	General Obligation Bonds/Notes	Authority Building Obligations	Other Long-Term Debt	Other Post- Employment Benefits (OPEB)	Compensated Absences	Net Pension Liability	Total
1. Debt at Beginning of Fiscal Year		6,200,000.00		3,590,441.44	8,197,000.00	809,971.25	73,542,000.00	92,339,412.69
2. Additional Debt Incurred During Year				285,000.00	441,131.00	45,798.75		771,929.75
3. Retirements and Repayments		400,000.00		983,972.71	769,262.00		3,509,000.00	5,662,234.71
4. Debt at End of Fiscal Year		5,800,000.00		2,891,468.73	7,868,869.00	855,770.00	70,033,000.00	87,449,107.73
5. Accreted Interest at End Of Fiscal Year								
6. Total Debt and Accreted Interest		5,800,000.00		2,891,468.73	7,868,869.00	855,770.00	70,033,000.00	87,449,107.73
7. Current Portion P&I - Due within 1 year		557,232.50		882,880.89		75,000.00		1,515,113.39
8. Interest Paid during current fiscal year		152,440.00		66,092.36				218,532.36

(PRINCIPAL AMOUNTS ONLY)

PROPRIETARY FUNDS

1. Debt at Beginning of Fiscal Year
2. Additional Debt Incurred During Year
3. Retirements and Repayments
4. Debt at End of Fiscal Year
5. Accreted Interest at End Of Fiscal Year
6. Total Debt and Accreted Interest
7. Current Portion P&I - Due within 1 year
8. Interest Paid during current fiscal year

Total Principal and Interest Payments Made by Your School - All Funds

Function	Fund		Principal (910)	Principal (920)	Interest (830)	Total (Principal +Interest)	Misc Other Uses (990)
5110	10	General Fund	1,389,767.07		218,532.36	1,608,299.43	
5110	20	Special Revenue Funds					
5110	30	Capital Projects Funds					
5110	40	Debt Service Fund					
5110	90	Permanent Fund					
5120	10	General Fund					
5120	20	Special Revenue Funds					
5120	30	Capital Projects Funds					
5120	40	Debt Service Fund					

Total Debt Payments - Governmental Funds			\$1,389,767.07		\$218,532.36	\$1,608,299.43	
---	--	--	-----------------------	--	---------------------	-----------------------	--

Function	Fund		Principal (910)	Principal (920)	Interest (830)	Total (Principal +Interest)
5110	50	Enterprise Fund				
5110	60	Internal Service Fund				
5120	50	Enterprise Fund				
5120	60	Internal Service Fund				

Total Debt Payments - Proprietary Funds						
--	--	--	--	--	--	--

Debt Details
Governmental Funds/ Activities

Debt Category	Debt Issue Date (MM/YYYY)	Principal Amounts Only			Debt at End of Fiscal Year	Current Portion Due Within One Year (Principal and Interest)	Interest Paid During Fiscal Year
		Debt at Beginning of Fiscal Year	Additions	Reductions / Repayments			
General Obligation Bonds/Notes – CIB	02/2016	2,945,000.00		130,000.00	2,815,000.00	222,637.50	84,132.50
General Obligation Bonds/Notes – CIB	08/2012	3,255,000.00		270,000.00	2,985,000.00	334,595.00	68,307.50
Extended Term Financing Agreements		3,590,441.44	285,000.00	983,972.71	2,891,468.73	882,880.89	66,092.36
Compensated Absences		809,971.25	45,798.75		855,770.00	75,000.00	
Other Post-Employment Benefits (OPEB)		8,197,000.00	441,131.00	769,262.00	7,868,869.00		
Net Pension Liability		73,542,000.00		3,509,000.00	70,033,000.00		
Totals for Debt Entered:		\$92,339,412.69	\$771,929.75	\$5,662,234.71	\$87,449,107.73	\$1,515,113.39	\$218,532.36

General Fund (10)

Section 1: Tuition/Purchased Services as Reported within Expenditure Detail

	Amount
Tuition Reported in General Fund Expenditures 1000-560	3,716,904.95
Purchased Services in General Fund Expenditures 1000-594 and 1000-597	

Section 1 Total	\$3,716,904.95
------------------------	-----------------------

Section 2: Tuition Paid to Institution Types During Fiscal Year

	Tuition Paid For Nonspecial Education	Tuition Paid For Special Education	Total
1 1306 Institutions			
2 Institutionalized Children's Programs			
3 Juveniles Incarcerated in Adult Facilities	95,161.76	224,671.01	319,832.77
4 Residential Treatment Facilities			
5 Other Local Education Agencies			
6 Brick and Mortar Charter Schools	2,386,395.19		2,386,395.19
7 Cyber Charter Schools			
8 Career and Technology Centers	864,738.00		864,738.00
9 Approved Private Schools			
10 PA Chartered Schools for the Deaf and Blind			
11 Private Residential Rehabilitative Institutions			
12 Juvenile Detention Centers	69,082.14		69,082.14
13 Special Program Jointures			
14 Other Tuition Not Included Elsewhere In This Section	76,856.85		76,856.85

Section 2 Total	\$3,492,233.94	\$224,671.01	\$3,716,904.95
------------------------	-----------------------	---------------------	-----------------------

- 1. Student Transportation Services for Educational Field Trips

- 2. Student Transportation Services for Student Activities 66,473.50

- 3. Rental of Vehicles for Student Transportation Services

- 4. Capital Reserve Funds

Include only district-owned transportation expenditures paid from State or local money.

DO NOT include federal expenditures or payments to contract service providers.

Contracted transportation services should not be recorded on this schedule.

Food Service / Cafeteria Operations Fund (51)

	<u>Total</u>
1000 Instruction	
100 Personnel Services – Salaries	
100 Personnel Services – Salaries	680,737.00
Total Personnel Services – Salaries	\$680,737.00
200 Personnel Services – Employee Benefits	
210 Group Insurance – Contracted Provider	206,905.09
220 Social Security Contributions	51,464.87
230 PSERS Retirement Contributions	217,140.44
250 Unemployment Compensation	425.76
260 Workers' Compensation	2,713.06
270 Group Insurance – Self-Insurance	1,053.78
280 Other Post-Employment Benefits (OPEB)	12,000.00
Total Personnel Services – Employee Benefits	\$491,703.00
400 Purchased Property Services	
430 Repairs and Maintenance Services	12,036.00
Total Purchased Property Services	\$12,036.00
600 Supplies	
610 General Supplies	46,003.19
630 Food	596,147.81
Total Supplies	\$642,151.00
700 Property	
740 Depreciation	1,177.00
Total Property	\$1,177.00
800 Other Objects	
810 Dues and Fees	60.00
890 Miscellaneous Expenditures	121.00
Total Other Objects	\$181.00
Total 1000 Instruction	\$1,827,985.00

Food Service / Cafeteria Operations Fund (51)

1100 Regular Programs – Elementary / Secondary

	<u>Elementary</u>	<u>Secondary</u>	<u>Federal</u>	<u>Total</u>
100 Personnel Services – Salaries				
100 Personnel Services – Salaries				680,737.00
Total Personnel Services – Salaries				\$680,737.00
200 Personnel Services – Employee Benefits				
210 Group Insurance – Contracted Provider				206,905.09
220 Social Security Contributions				51,464.87
230 PSERS Retirement Contributions				217,140.44
250 Unemployment Compensation				425.76
260 Workers' Compensation				2,713.06
270 Group Insurance – Self-Insurance				1,053.78
280 Other Post-Employment Benefits (OPEB)				12,000.00
Total Personnel Services – Employee Benefits				\$491,703.00
400 Purchased Property Services				
430 Repairs and Maintenance Services				12,036.00
Total Purchased Property Services				\$12,036.00
600 Supplies				
610 General Supplies				46,003.19
630 Food				596,147.81
Total Supplies				\$642,151.00
700 Property				
740 Depreciation				1,177.00
Total Property				\$1,177.00
800 Other Objects				
810 Dues and Fees				60.00
890 Miscellaneous Expenditures				121.00
Total Other Objects				\$181.00
Total 1100 Regular Programs – Elementary / Secondary				\$1,827,985.00

Food Service / Cafeteria Operations Fund (51)

	<u>Elementary</u>	<u>Secondary</u>	<u>Federal</u>	<u>Total</u>
1110 Regular Programs				
100 <u>Personnel Services – Salaries</u>				
100 Personnel Services – Salaries				680,737.00
Total Personnel Services – Salaries				\$680,737.00
200 <u>Personnel Services – Employee Benefits</u>				
210 Group Insurance – Contracted Provider				206,905.09
220 Social Security Contributions				51,464.87
230 PSERS Retirement Contributions				217,140.44
250 Unemployment Compensation				425.76
260 Workers' Compensation				2,713.06
270 Group Insurance – Self-Insurance				1,053.78
280 Other Post-Employment Benefits (OPEB)				12,000.00
Total Personnel Services – Employee Benefits				\$491,703.00
400 <u>Purchased Property Services</u>				
430 Repairs and Maintenance Services				12,036.00
Total Purchased Property Services				\$12,036.00
600 <u>Supplies</u>				
610 General Supplies				46,003.19
630 Food				596,147.81
Total Supplies				\$642,151.00
700 <u>Property</u>				
740 Depreciation				1,177.00
Total Property				\$1,177.00
800 <u>Other Objects</u>				
810 Dues and Fees				60.00
890 Miscellaneous Expenditures				121.00
Total Other Objects				\$181.00
Total 1110 Regular Programs				\$1,827,985.00

	<u>Food Service(51)</u>	<u>Child Care Operations(52)</u>	<u>Other Enterprise(58)</u>	<u>Internal Service(60)</u>	<u>Total</u>
1000 Instruction					
1100 Regular Programs - Elementary / Secondary		1,827,985.00			1,827,985.00
Total Instruction		\$1,827,985.00			\$1,827,985.00
TOTAL ACTUAL EXPENDITURES & OTHER FINANCING USES		\$1,827,985.00			\$1,827,985.00

