

LEA Name : Pottsville Area SD
Address : 1501 W Laurel Blvd
Pottsville, PA 17901

County : Schuylkill
AUN Number : 129546103
LEA Type : SD

Annual Financial Report
Accuracy Certification Statement
For Fiscal Year Ending
6/30/2017

Pennsylvania Department of Education
&
Office of Comptroller Operations

PDE-2056: Intermediate Unit
PDE-2057: School District, AVTS/CTC, Charter School,
and Special Program Jointure

CERTIFICATION: By signing this page I agree that the electronic data submitted is a complete and accurate statement of the financial operations and status of the local education agency for the fiscal year. It has been prepared in accordance with generally accepted accounting principles and established Commonwealth of PA reporting guidelines.



Chief School Administrator Signature

Date 11/13/17



Board Secretary Signature

Date 11/13/17

Patricia A Lombel

Contact Person

(570)621-2905 Ext :

Contact Person Telephone Number

plombel@pottsville.k12.pa.us

Contact Person E-mail Address

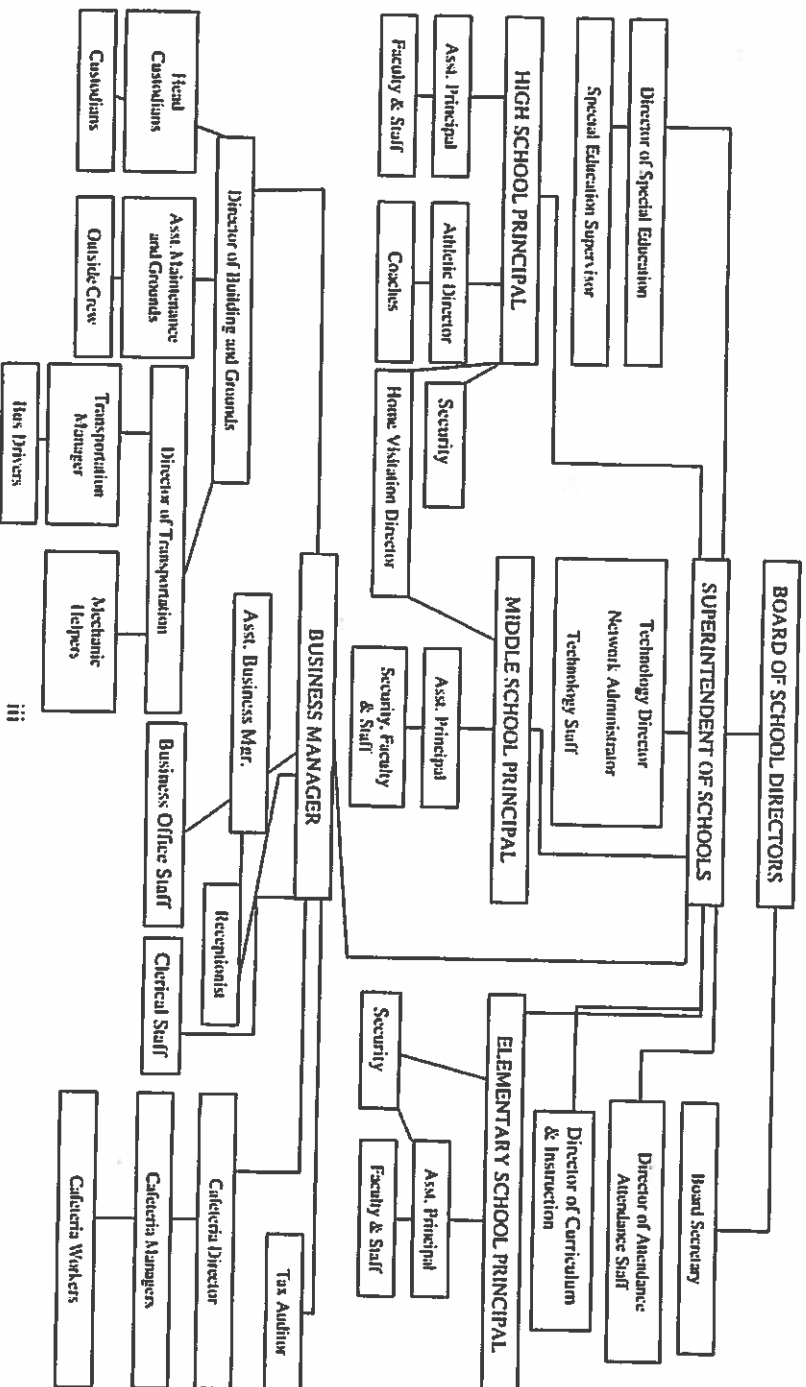
(570)621-2044

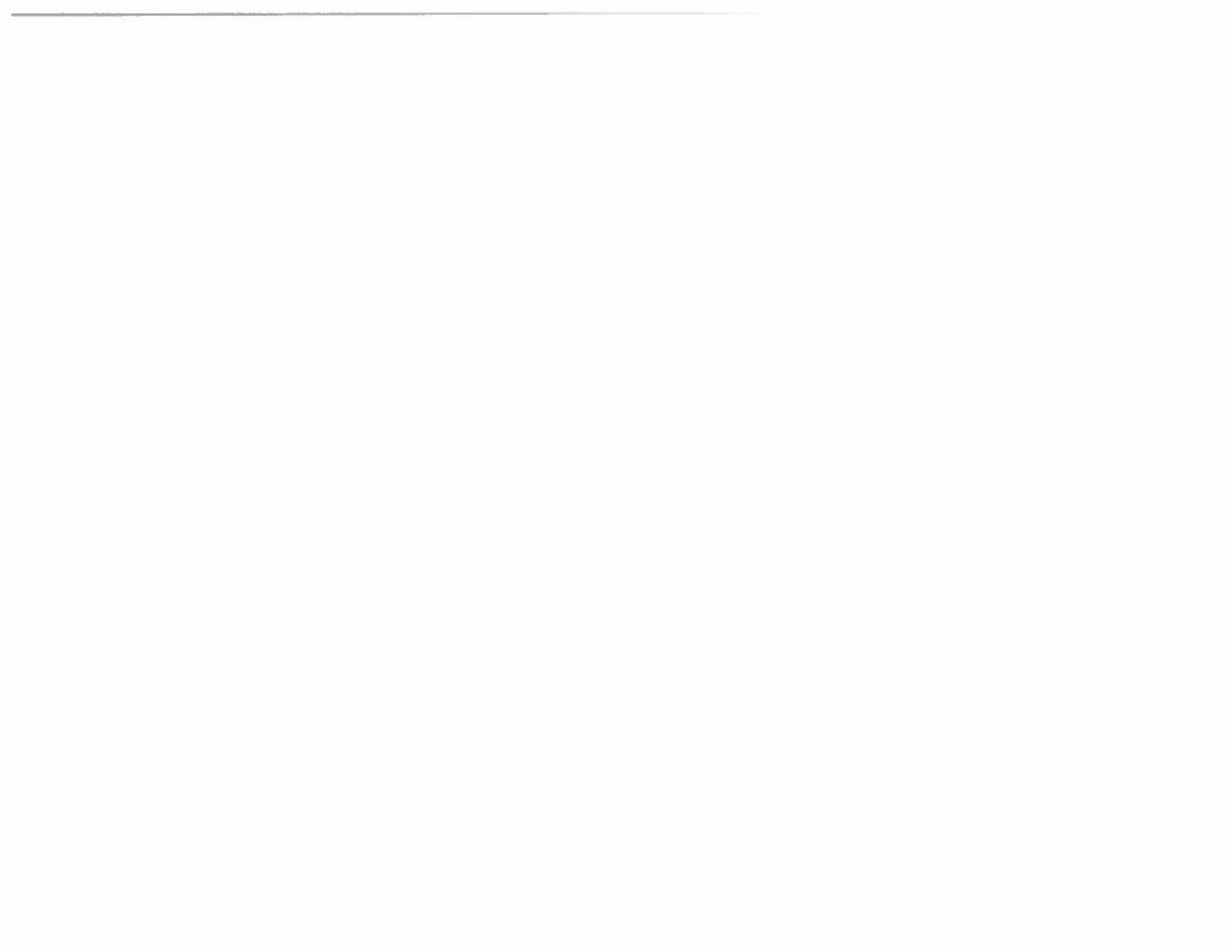
Contact Person Fax Number

No. 008

POTTSVILLE AREA SCHOOL DISTRICT

SECTION: LOCAL BOARD PROCEDURES
TITLE: ORGANIZATION CHART
ADOPTED: May 13, 2009
REVISED: August 21, 2013





Amounts Expressed in Whole Dollars	<u>General Fund</u> (10)	<u>Public Purpose Trust</u> (27)	<u>Other Compt Approved</u> (28)	<u>Athletic / Activity</u> (29)	<u>Capital Reserve (690)</u> <u>1850</u> (31)
Assets And Deferred Outflows Of Resources					
Assets					
0100 Cash and Cash Equivalents	1,422,488				
0110 Investments					
0120 Taxes Receivable	2,623,199				
0130 Due From Other Funds					
0141 Due From Other Governments					
0142 State Revenue Receivable					
0143 Federal Revenue Receivable					
0145 Other Intergovernmental Revenue Receivable	2,499,055				
0146 Due from Primary Government					
0147 Due from Component Unit					
0150 Other Receivables					
0170 Inventories					
0180 Prepaid Expenses (Expenditures)					
0190 Other Current Assets					
Total Assets	\$6,544,742				
0910 Deferred Outflows of Resources					
Total Assets And Deferred Outflows Of Resources	\$6,544,742				

Amounts Expressed in Whole Dollars	<u>Capital Reserve (1431)</u> (32)	<u>Other Capital Projects</u> <u>Fund</u> (39)	<u>Debt Service</u> (40)	<u>Permanent</u> (90)	<u>Total Governmental</u> <u>Funds</u>
Assets And Deferred Outflows Of Resources					
Assets					
0100 Cash and Cash Equivalents	609,803	7			2,032,298
0110 Investments					
0120 Taxes Receivable					2,623,199
0130 Due From Other Funds					
0141 Due From Other Governments					
0142 State Revenue Receivable					
0143 Federal Revenue Receivable					
0145 Other Intergovernmental Revenue Receivable					2,499,055
0146 Due from Primary Government					
0147 Due from Component Unit					
0150 Other Receivables					
0170 Inventories					
0180 Prepaid Expenses (Expenditures)					
0190 Other Current Assets					
Total Assets	\$609,803	\$7			\$7,154,552
0910 Deferred Outflows of Resources					
Total Assets And Deferred Outflows Of Resources	\$609,803	\$7			\$7,154,552

Amounts Expressed in Whole Dollars	<u>General Fund</u> (10)	<u>Public Purpose Trust</u> (27)	<u>Other Compt Approved</u> (28)	<u>Athletic / Activity</u> (29)	<u>Capital Reserve (690)</u> <u>1850</u> <u>(31)</u>
Liabilities And Deferred Inflows Of Resources And Fund Balances					
Liabilities					
0400 Due to Other Funds	38,985				
0411 Due to Other Governments					
0412 Due to Primary Government					
0413 Due to Component Unit					
0420 Accounts Payable	627,235				
0430 Contracts Payable					
0440 Current Portion of Long-Term Debt					
0450 Short-Term Payables					
0461 Accrued Salaries and Benefits	5,315,874				
0462 Payroll Deductions and Withholding					
0480 Unearned Revenues					
0490 Other Current Liabilities					
Total Liabilities	\$5,982,094				
0950 Deferred Inflows of Resources	1,777,714				
Fund Balances					
0810 Nonspendable Fund Balance					
0820 Restricted Fund Balance					
0830 Committed Fund Balance					
0840 Assigned Fund Balance					
0850 Unassigned Fund Balance	(1,215,066)				
Total Fund Balances	(\$1,215,066)				
Total Liabilities, Deferred Inflows Of Resources And Fund Balances	\$6,544,742				

Amounts Expressed in Whole Dollars	<u>Capital Reserve (1431)</u> <u>(32)</u>	<u>Other Capital Projects</u> <u>Fund</u> <u>(39)</u>	<u>Debt Service</u> <u>(40)</u>	<u>Permanent</u> <u>(90)</u>	<u>Total Governmental</u> <u>Funds</u>
Liabilities And Deferred Inflows Of Resources And Fund Balances					
Liabilities					
0400 Due to Other Funds					38,985
0411 Due to Other Governments					
0412 Due to Primary Government					
0413 Due to Component Unit					
0420 Accounts Payable					627,235
0430 Contracts Payable					
0440 Current Portion of Long-Term Debt					
0450 Short-Term Payables					
0461 Accrued Salaries and Benefits					5,315,874
0462 Payroll Deductions and Withholding					
0480 Unearned Revenues					
0490 Other Current Liabilities					
Total Liabilities					\$5,982,094
0950 Deferred Inflows of Resources					1,777,714
Fund Balances					
0810 Nonspendable Fund Balance					
0820 Restricted Fund Balance	609,803	7			609,810
0830 Committed Fund Balance					
0840 Assigned Fund Balance					
0850 Unassigned Fund Balance					(1,215,066)
Total Fund Balances	\$609,803	\$7			(\$605,256)
Total Liabilities, Deferred Inflows Of Resources And Fund Balances	\$609,803	\$7			\$7,154,552

Amounts Expressed in Whole Dollars	<u>General Fund</u> (10)	<u>Public Purpose Trust</u> (27)	<u>Other Compt Approved</u> (28)	<u>Athletic / Activity</u> (29)	<u>Capital Reserve (690)</u> <u>1850</u> (31)
Revenues					
6000 Revenue from Local Sources	16,641,677				
7000 Revenue from State Sources	21,217,494				
8000 Revenue from Federal Sources	1,269,192				
Total Revenues	\$39,128,363				
Expenditures					
1000 Instruction	26,745,251				
2000 Support Services	11,991,137				
3000 Operation of Non-Instructional Services	1,314,059				
4000 Facilities Acquisition, Construction and Improvement Services					
5110 Debt Service	1,746,784				
5130 Refund of Prior Year Revenues / Receipts					
Total Expenditures	\$41,797,231				
Excess (Deficiency) Of Revenues Over Expenditures	(\$2,668,868)				
Other Financing Sources (Uses)					
9110 Face Value of Bonds Issued					
9120 Proceeds from Refunding of Bonds					
9130 Bond Premiums					
9200 Proceeds from Extended-Term Financing	17,358				
9300 Interfund Transfers - IN					
9400 Sale of or Compensation for Loss of Fixed Assets	322,262				
9710 Transfers from Component Units					
9720 Transfers from Primary Governments					
9910 Other Financing Sources Not Listed in the 9000 Series					
9990 Insurance Recoveries					
5120 Debt Service - Refunded Bonds					
5150 Bond Discounts					
5200 Interfund Transfers - Out	228,771				
5300 Transfers Out to Component Units/Primary Governments					
Total Other Financing Sources (Uses)	\$110,849				

Amounts Expressed in Whole Dollars	<u>Capital Reserve (1431)</u> (32)	<u>Other Capital Projects</u> <u>Fund</u> (39)	<u>Debt Service</u> (40)	<u>Permanent</u> (90)	<u>Total Governmental</u> <u>Funds</u>
Revenues					
6000 Revenue from Local Sources	2,519	1,141			16,645,337
7000 Revenue from State Sources					21,217,494
8000 Revenue from Federal Sources					1,269,192
Total Revenues	\$2,519	\$1,141			\$39,132,023
Expenditures					
1000 Instruction					26,745,251
2000 Support Services					11,991,137
3000 Operation of Non-Instructional Services					1,314,059
4000 Facilities Acquisition, Construction and Improvement Services	32,936	2,200,634			2,233,570
5110 Debt Service					1,746,784
5130 Refund of Prior Year Revenues / Receipts					
Total Expenditures	\$32,936	\$2,200,634			\$44,030,801
Excess (Deficiency) Of Revenues Over Expenditures	(\$30,417)	(\$2,199,493)			(\$4,898,778)
Other Financing Sources (Uses)					
9110 Face Value of Bonds Issued					
9120 Proceeds from Refunding of Bonds					
9130 Bond Premiums					
9200 Proceeds from Extended-Term Financing					17,358
9300 Interfund Transfers - IN				163,771	163,771
9400 Sale of or Compensation for Loss of Fixed Assets					322,262
9710 Transfers from Component Units					
9720 Transfers from Primary Governments					
9910 Other Financing Sources Not Listed in the 9000 Series					
9990 Insurance Recoveries			285,421		285,421
5120 Debt Service – Refunded Bonds					
5150 Bond Discounts					
5200 Interfund Transfers – Out					228,771
5300 Transfers Out to Component Units/Primary Governments					
Total Other Financing Sources (Uses)			\$449,192		\$560,041

Amounts Expressed in Whole Dollars	<u>General Fund</u> (10)	<u>Public Purpose Trust</u> (27)	<u>Other Compt Approved</u> (28)	<u>Athletic / Activity</u> (29)	<u>Capital Reserve (690)</u> <u>1850</u> (31)
Special And Extraordinary Items					
9920 Special Items – Gains					
9930 Extraordinary Items – Gains					
5520 Special Items – Losses					
5530 Extraordinary Items – Losses					
Net Change In Fund Balances	(\$2,558,019)				
Fund Balance					
0001 Fund Balance - Beginning of Fiscal Year	1,342,953				
Fund Balance - End Of Year	(\$1,215,066)				

Amounts Expressed in Whole Dollars	<u>Capital Reserve</u> (1431) (32)	<u>Other Capital Projects</u> Fund (39)	<u>Debt Service</u> (40)	<u>Permanent</u> (90)	<u>Total Governmental</u> Funds
Special And Extraordinary Items					
9920 Special Items – Gains					
9930 Extraordinary Items – Gains					
5520 Special Items – Losses					
5530 Extraordinary Items – Losses					
Net Change In Fund Balances	(\$30,417)	(\$1,750,301)			(\$4,338,737)
Fund Balance					
0001 Fund Balance - Beginning of Fiscal Year	640,220	1,750,308			3,733,481
Fund Balance - End Of Year	\$609,803	\$7			(\$605,256)

Amounts Expressed in Whole Dollars	<u>Food Service</u> (51)	<u>Child Care</u> <u>Operations</u> (52)	<u>Other Enterprise</u> (58)	<u>TOTAL</u>	<u>Internal Service</u> (60)
Assets And Deferred Outflows Of Resources					
Current Assets					
0100 Cash and Cash Equivalents	105,295			105,295	
0110 Investments					
0130 Due From Other Funds	38,985			38,985	
0141 Due From Other Governments	18,096			18,096	
0142 State Revenue Receivable					
0143 Federal Revenue Receivable					
0146 Due from Primary Government					
0147 Due from Component Unit					
0150 Other Receivables					
0170 Inventories	34,267			34,267	
0180 Prepaid Expenses (Expenditures)					
0190 Other Current Assets					
Total Current Assets	\$196,643			\$196,643	
Noncurrent Assets					
0211 Land					
0212 Site Improvements (Net)					
0220 Buildings and Building Improvements (Net)					
0230 Machinery, Equipment and Furniture (Net)	1,891			1,891	
0250 Construction in Progress					
0260 Long Term Prepayments					
0290 Other Noncurrent Assets					
Total Noncurrent Assets	\$1,891			\$1,891	
0910 Deferred Outflows of Resources					
Total Assets And Deferred Outflows Of Resources	\$198,534			\$198,534	

Amounts Expressed in Whole Dollars	<u>Food Service</u> (51)	<u>Child Care</u> <u>Operations</u> (52)	<u>Other Enterprise</u> (58)	<u>TOTAL</u>	<u>Internal Service</u> (60)
Liabilities And Deferred Inflows Of Resources And Net Position					
Current Liabilities					
0400 Due to Other Funds					
0411 Due to Other Governments					
0413 Due to Component Unit					
0420 Accounts Payable	23,166			23,166	
0430 Contracts Payable					
0440 Current Portion of Long-Term Debt					
0450 Short-Term Payables					
0461 Accrued Salaries and Benefits	58,776			58,776	
0462 Payroll Deductions and Withholding					
0480 Unearned Revenues					
0490 Other Current Liabilities					
Total Current Liabilities	\$81,942			\$81,942	
Noncurrent Liabilities					
0510 Bonds Payable					
0520 Extended-Term Financing Agreements Payable					
0530 Lease-Purchase Obligations					
0540 Accumulated Compensated Absences	11,500			11,500	
0550 Authority Lease Obligations					
0560 Other Post-Employment Benefits (OPEB)					
0570 Net Pension Liability					
0599 Other Noncurrent Liabilities					
Total Noncurrent Liabilities	\$11,500			\$11,500	
Total Liabilities	\$93,442			\$93,442	
0950 Deferred Inflows of Resources	38,387			38,387	
Net Position					
0791 Net Investment in Capital Assets	1,891			1,891	
0008 Restricted Net Position (0792 – 0798)					
0799 Unrestricted Net Position	64,814			64,814	
Total Net Position	\$66,705			\$66,705	
Total Liabilities And Deferred Inflows Of Resources And Net Position	\$198,534			\$198,534	

Amounts Expressed in Whole Dollars	<u>Food Service</u> (51)	<u>Child Care Operations</u> (52)	<u>Other Enterprise</u> (58)	<u>TOTAL</u>	<u>Internal Service</u> (60)
Operating Revenues					
6600 Food Service Revenue	599,032			599,032	
0071 Charges for Services					
0072 Other Operating Revenue	2,163			2,163	
Total Operating Revenues	\$601,195			\$601,195	
Operating Expenses					
100 Personnel Services – Salaries	739,960			739,960	
200 Personnel Services – Employee Benefits	520,655			520,655	
300 Purchased Professional and Technical Services					
400 Purchased Property Services	14,715			14,715	
500 Other Purchased Services					
600 Supplies	768,962			768,962	
740 Depreciation	468			468	
810 Dues and Fees					
890 Miscellaneous Expenditures	698			698	
Total Operating Expenses	\$2,045,458			\$2,045,458	
Operating Income (Loss)	(\$1,444,263)			(\$1,444,263)	
Non Operating Revenues (Expenses)					
6500 Earnings on Investments	26			26	
6920 Contributions and Donations from Private Sources					
6930 Gains or Losses on Sale of Fixed Assets					
6991 Refunds of a Prior Year Expenditure					
7000 Revenue from State Sources	227,993			227,993	
8000 Revenue from Federal Sources	1,107,319			1,107,319	
820 Claims and Judgments Against the LEA					
830 Interest					
TOTAL Non Operating Revenues (Expenses)	\$1,335,338			\$1,335,338	
Income (Loss) Before Contributions And Transfers	(\$108,925)			(\$108,925)	

Amounts Expressed in Whole Dollars	<u>Food Service</u> (51)	<u>Child Care Operations</u> (52)	<u>Other Enterprise</u> (58)	<u>TOTAL</u>	<u>Internal Service</u> (60)
Contributions, Transfers, and Special and Extraordinary Items					
5200 Interfund Transfers - Out					
5300 Transfers Out to Component Units/Primary Governments					
5520 Special Items - Losses					
5530 Extraordinary Items - Losses					
9300 Interfund Transfers - IN	65,000			65,000	
9500 Capital Contributions					
9700 Transfers IN From Component Units/Primary Governments					
9920 Special Items - Gains					
9930 Extraordinary Items - Gains					
Change In Net Position	(\$43,925)			(\$43,925)	
0002 Net Position - Beginning of Fiscal Year	110,630			110,630	
0003 Accounting Changes / Residual Equity Transfers					
Net Position - End Of Year	\$66,705			\$66,705	

Amounts Expressed in Whole Dollars	<u>Food Service</u> (51)	<u>Child Care Operations</u> (52)	<u>Other Enterprise</u> (58)	<u>TOTAL</u>	<u>Internal Service(60)</u>
Cash Flows From Operating Activities					
0011 Cash Receipts From Users	724,481			724,481	
0012 Cash Receipts From Assessments Made to Other Funds					
0013 Cash Receipts From Earnings on Investments					
0014 Cash Receipts From Other Operating Revenue					
0015 Cash Payments To Employees For Services	1,260,615			1,260,615	
0016 Cash Payments For Insurance Claims					
0017 Cash Payments To Suppliers For Goods and Services	784,375			784,375	
0018 Cash Payments For Other Operating Expenses					
Net Cash Provided By (Used For) Operating Activities	(\$1,320,509)			(\$1,320,509)	
Cash Flows From Non-Capital Financing Activities					
0021 Receipts From Local Sources - 6000					
0022 Receipts From State Sources - 7000	227,993			227,993	
0023 Receipts From Federal Sources -8000	1,107,319			1,107,319	
0024 Notes and Loans Received (Repaid)	(4,453)			(4,453)	
0025 Interest Paid on Notes/Loans - 5100-830					
0026 Operating Transfers In (Out)/Residual Equity Trans					
0027 Operating Transfers In (Out) Primary Government / Comp Unit	65,000			65,000	
0028 Receipts From Refund of Prior Year Expenditures - 6991					
0029 Special and Extraordinary Gains (losses)					
Net Cash Prov By (Used for) Non-Capital Financing Activities	\$1,395,859			\$1,395,859	
Cash Flows From Capital and Related Financing Activities					
0031 Payments For Fac Acq, Const, and Imp - 4000					
0032 Gain / (Loss) on Sale of Fixed Assets - 6930					
0033 Proceeds From Extended Term Financing - 9200					
0034 Principal Paid on Financing Agreements					
0035 Interest Paid on Financing Agreements - 5100-830					
0036 (Inc) Dec in Contributed Capital					
Net Cash Prov By (Used for) Capital and Related Financing Activities					
Cash Flows From Investing Activities					
0041 Earnings on Investments - 6500	26			26	
0042 Purchase of Inv Securities / Deposits to Inv Pools					
0043 Receipts From Investment Pool Withdrawals					
0044 Proceeds from Sale and Maturity of Inv Securities					
0045 Loans Received (Paid)					
Net Cash Prov By (Used for) Investing Activities	\$26			\$26	

	<u>Food Service</u> (51)	<u>Child Care Operations</u> (52)	<u>Other Enterprise</u> (58)	<u>TOTAL</u>	<u>Internal Service</u> (60)
Net Increase (Decrease) in Cash Flows	75,376			75,376	
0004 Cash and Cash Equivalents Beginning of Year	29,919			29,919	
Cash and Cash Equivalents at Year End	\$105,295			\$105,295	
Reconciliation of Operating Income (Loss) To Net Cash Provided by (Used For) Operating Activities					
0005 Operating Income (Loss) per REP	(1,444,263)			(1,444,263)	
Adjustments					
0051 Depreciation and Net Amortization	468			468	
0052 Provision for Uncollectible Accounts					
0053 Other Adjustments					
Effect of Changes in Assets, Liabilities, Deferred Outflows and Deferred Inflows					
0054 (Inc) Dec In Accounts Receivable (0120-0150)	111,488			111,488	
0055 Advances to Other Funds (0160)	(70,476)			(70,476)	
0056 (Inc) Dec in Inventories (0170)	(858)			(858)	
0057 (Inc) Dec in Prepaid Expenses (0180)					
0058 (Inc) Dec in Other Current or Noncurrent Assets					
0064 Deferred Outflows (0910)					
0059 Inc (Dec) In Accounts Payable (0400-0450)	23,166			23,166	
0060 Inc (Dec) In Accrued Salaries/Benefits (0461)	55,971			55,971	
0065 Inc (Dec) in Net Pension Liabilities (0570)					
0066 Inc (Dec) in Other Postemp Benefit Oblig (0560)					
0061 Inc (Dec) in Payroll Deductions/Withholding (0462)					
0062 Inc (Dec) in Unearned Revenue (0480)	3,995			3,995	
0063 Inc (Dec) in Other Current or Noncurrent Liabilities					
0067 Deferred Inflows (0950)					
Total Adjustments	\$123,754			\$123,754	
Cash Provided By (Used for) Total	(\$1,320,509)			(\$1,320,509)	

COMBINED STATEMENT OF CASH FLOWS
SCHEDULE OF NONCASH INVESTING, CAPITAL, AND FINANCING ACTIVITIES

Explanation of Transaction and Balance Sheet Effect	Amount
Total	

Amounts Expressed in Whole Dollars	<u>Private Purpose Trust</u> (71)	<u>Investment Trust</u> (72)	<u>Pension Trust</u> (73)	<u>Activity</u> (81)
Assets And Deferred Outflows Of Resources				
Assets				
0100 Cash and Cash Equivalents	809,371			443,900
0110 Investments				
0130 Due From Other Funds				
0147 Due from Component Unit				
0150 Other Receivables				
0170 Inventories				
0180 Prepaid Expenses (Expenditures)				
0190 Other Current Assets				
0220 Buildings and Building Improvements (Net)				
0230 Machinery, Equipment and Furniture (Net)				
Total Assets	\$809,371			\$443,900
0910 Deferred Outflows of Resources				
Total Assets And Deferred Outflows Of Resources	\$809,371			\$443,900

Amounts Expressed in Whole Dollars	<u>Other Agency</u> (89)	<u>Discrete Component Units</u> (98)	<u>Discrete Component Units</u> (99)	<u>Total Fiduciary Funds</u>
Assets And Deferred Outflows Of Resources				
Assets				
0100 Cash and Cash Equivalents				1,253,271
0110 Investments				
0130 Due From Other Funds				
0147 Due from Component Unit				
0150 Other Receivables				
0170 Inventories				
0180 Prepaid Expenses (Expenditures)				
0190 Other Current Assets				
0220 Buildings and Building Improvements (Net)				
0230 Machinery, Equipment and Furniture (Net)				
Total Assets				\$1,253,271
0910 Deferred Outflows of Resources				
Total Assets And Deferred Outflows Of Resources				\$1,253,271

Amounts Expressed in Whole Dollars	<u>Private Purpose Trust</u> (71)	<u>Investment Trust</u> (72)	<u>Pension Trust</u> (73)	<u>Activity</u> (81)
Liabilities, Deferred Inflows Of Resources And Net Position				
Liabilities				
0400 Due to Other Funds				
0411 Due to Other Governments				
0412 Due to Primary Government				
0413 Due to Component Unit				
0420 Accounts Payable				
0430 Contracts Payable				
0450 Short-Term Payables				
0461 Accrued Salaries and Benefits				
0462 Payroll Deductions and Withholding				
0480 Unearned Revenues				
0490 Other Current Liabilities				443,900
Total Liabilities				\$443,900
0950 Deferred Inflows of Resources				
Net Position				
0791 Net Investment in Capital Assets				
0009 Restricted Net Position (0792 – 0798)				
0799 Unrestricted Net Position		809,371		
Total Net Position		\$809,371		
Total Liabilities, Deferred Inflows Of Resources And Net Position		\$809,371		\$443,900

Amounts Expressed in Whole Dollars	<u>Other Agency</u> (89)	<u>Discrete Component Units</u> (98)	<u>Discrete Component Units</u> (99)	<u>Total Fiduciary Funds</u>
Liabilities, Deferred Inflows Of Resources And Net Position				
Liabilities				
0400 Due to Other Funds				
0411 Due to Other Governments				
0412 Due to Primary Government				
0413 Due to Component Unit				
0420 Accounts Payable				
0430 Contracts Payable				
0450 Short-Term Payables				
0461 Accrued Salaries and Benefits				
0462 Payroll Deductions and Withholding				
0480 Unearned Revenues				
0490 Other Current Liabilities				443,900
Total Liabilities				\$443,900
0950 Deferred Inflows of Resources				
Net Position				
0791 Net Investment in Capital Assets				
0009 Restricted Net Position (0792 – 0798)				
0799 Unrestricted Net Position				809,371
Total Net Position				\$809,371
Total Liabilities, Deferred Inflows Of Resources And Net Position				\$1,253,271

Amounts Expressed in Whole Dollars	<u>Private Purpose Trust</u> (71)	<u>Investment Trust</u> (72)	<u>Pension Trust</u> (73)	<u>Discrete Component</u> <u>Units</u> (98)	<u>Discrete Component</u> <u>Units</u> (99)	<u>Total Fiduciary</u> <u>Funds</u>
Additions						
0091 Gifts and Contributions	142,882					142,882
0092 Other Additions						
Deductions						
0093 Scholarships Awarded	67,859					67,859
0094 Other Deductions						
Change in Net Position	\$75,023					\$75,023
0006 Net Position – Beginning of Fiscal Year	734,348					734,348
0007 Net Position Held in Trust for Pension Benefits						
Net Position - End of Fiscal Year	\$809,371					\$809,371

	<u>Revenue Reported In Current Year</u>	<u>Current Year Tax Accrual</u>	<u>Prior Year Tax Accrual</u>	<u>Taxes Collected In Current Year</u>
<u>Revenue from Local Sources</u>				
6111 Current Real Estate Taxes	8,673,311.98			8,673,311.98
6113 Public Utility Realty Taxes	14,507.32			14,507.32
6114 Payments in Lieu of Current Taxes - State / Local	24,017.61			24,017.61
6120 Current Per Capita Taxes, Section 679	36,577.70			36,577.70
6141 Current Act 511 Per Capita Taxes	36,577.70			36,577.70
6143 Current Act 511 Local Services Taxes	59,257.10	12,283.85		46,973.25
6151 Current Act 511 Earned Income Taxes	1,733,591.78	357,074.64	327,257.85	1,703,774.99
6152 Current Act 511 Occupation Taxes	403,234.00			403,234.00
6153 Current Act 511 Real Estate Transfer Taxes	284,618.25	8,103.29	9,262.26	285,777.22
6155 Current Act 511 Business Privilege Taxes	1,022,984.67	54,623.96		968,360.71
6411 Delinquent Real Estate Taxes	1,126,475.20	280,103.37	296,997.43	1,143,369.26
6440 Delinquent Local Enabling Taxes - Flat Rate Assessments	42,522.81			42,522.81
6451 Delinquent Act 511 Earned Income Taxes	35,614.42		2,961.42	38,575.84
6452 Delinquent Act 511 Occupation Taxes	365,735.05	56,212.17		309,522.88
6455 Delinquent Act 511 Business Privilege Taxes	13,550.23			13,550.23
6500 Earnings on Investments	2,590.00			
6700 Revenues from LEA Activities	352,641.27			
6832 Federal IDEA Revenue Received as Pass Through	460,844.00			
6910 Rentals	16,392.31			
6920 Contributions and Donations from Private Sources	24,993.80			
6941 Regular Day School Tuition	5,015.55			
6942 Summer School Tuition	1,055.00			
6944 Receipts from Other LEAs in Pennsylvania - Education	1,784,484.21			
6961 Transportation Services Provided Other Pennsylvania LEAs	18,626.00			
6970 Services Provided Other Funds	2,271.88			
6991 Refunds of a Prior Year Expenditure	11,055.66			
6992 Energy Efficiency Revenues and Incentives	45,571.39			
6999 Other Revenues Not Specified Above	43,559.62			
TOTAL Revenue from Local Sources	\$16,641,676.51	\$768,401.28	\$636,478.96	\$13,740,653.50

	<u>Revenue Reported In Current Year</u>
<u>Revenue from State Sources</u>	
7110 Basic Education Funding	13,205,288.76
7160 Tuition for Orphans Subsidy	59,643.03
7271 Special Education funds for School-Aged Pupils	1,727,563.64
7311 Pupil Transportation Subsidy	467,008.52
7312 Nonpublic and Charter School Pupil Transportation Subsidy	88,550.00
7330 Health Services (Medical, Dental, Nurse, Act 25)	57,425.71
7340 State Property Tax Reduction Allocation	703,186.41
7505 Ready to Learn Block Grant	530,716.00
7810 State Share of Social Security and Medicare Taxes	895,876.27
7820 State Share of Retirement Contributions	3,482,236.13
TOTAL Revenue from State Sources	\$21,217,494.47

	Revenue Reported In Current Year
<u>Revenue from Federal Sources</u>	
8514 NCLB, Title I - Improving the Academic Achievement of the Disadvantaged	687,825.16
8515 NCLB, Title II - Preparing, Training and Recruiting High Quality Teachers and Principals	155,814.00
8517 NCLB, Title IV - 21st Century Schools	35,390.11
8690 Other Restricted Federal Grants-in-Aid Through the Commonwealth of PA	4,805.81
8810 School-Based Access Medicaid Reimbursement Program (SBAP) Reimbursements (Access)	360,054.04
8820 Medical Assistance Reimbursement for Administrative Claiming (Quarterly) Program	25,302.60
TOTAL Revenue from Federal Sources	\$1,269,191.72

	Revenue Reported In Current Year			
Other Financing Sources				
9290 Other Extended-Term Financing Proceeds	17,358.00			
9400 Sale of or Compensation for Loss of Fixed Assets	322,262.07			
TOTAL Other Financing Sources	\$339,620.07			
TOTAL FROM ALL SOURCES	\$39,467,982.77	\$768,401.28	\$636,478.96	\$13,740,653.50

Revenue from Local Sources	16,641,676.51
Revenue from State Sources	21,217,494.47
Revenue from Federal Sources	1,269,191.72
Other Financing Sources	339,620.07
TOTAL FROM ALL SOURCES	\$39,467,982.77

General Fund (10)

	<u>Total</u>
1000 Instruction	
100 Personnel Services – Salaries	
100 Personnel Services – Salaries	12,169,462.27
Total Personnel Services – Salaries	\$12,169,462.27
200 Personnel Services – Employee Benefits	
210 Group Insurance – Contracted Provider	3,649,785.39
220 Social Security Contributions	917,634.48
230 PSERS Retirement Contributions	3,651,358.24
250 Unemployment Compensation	10,393.24
260 Workers' Compensation	67,721.74
270 Group Insurance – Self-Insurance	(105,295.55)
280 Other Post-Employment Benefits (OPEB)	348,352.84
Total Personnel Services – Employee Benefits	\$8,539,950.38
300 Purchased Professional and Technical Services	
322 Professional Educational Services – Ius	907,245.52
323 Professional Educational Services – Other Educational Agencies	96,238.51
329 Professional Educational Services – Other	252,031.17
330 Other Professional Services	58,934.17
340 Technical Services	27,420.07
390 Other Purchased Professional and Technical Services	34,451.94
Total Purchased Professional and Technical Services	\$1,376,321.38
400 Purchased Property Services	
430 Repairs and Maintenance Services	25,987.85
440 Rentals	35,244.21
Total Purchased Property Services	\$61,232.06
500 Other Purchased Services	
530 Communications	10,420.15
550 Printing and Binding	10,315.43
561 Tuition To Other School Districts Within the State	570,826.31
562 Tuition To Pennsylvania Charter Schools	2,381,355.48
564 Tuition To Career and Technology Centers	813,320.00
568 Tuition To Private Residential Rehabilitative Institutions (PRRI) [In-State] and Detention Centers	29,500.33
569 Tuition – Other	397,025.10
580 Travel	245.31
Total Other Purchased Services	\$4,213,008.11
600 Supplies	
610 General Supplies	203,727.01
630 Food	1,924.04
640 Books and Periodicals	105,340.95
650 Supplies & Fees – Technology Related	63,836.71
Total Supplies	\$374,828.71
700 Property	
752 Capital Equipment – Original and Additional	2,195.00
Total Property	\$2,195.00

General Fund (10)

1000 Instruction

800 Other Objects

810 Dues and Fees

Total

8,253.00

Total Other Objects

\$8,253.00

Total 1000 Instruction

\$26,745,250.91

General Fund (10)

1100 Regular Programs – Elementary / Secondary	Elementary	Secondary	Federal	Total
100 Personnel Services – Salaries				
100 Personnel Services – Salaries	3,838,129.08	4,083,125.98	401,417.10	8,322,672.16
Total Personnel Services – Salaries	\$3,838,129.08	\$4,083,125.98	\$401,417.10	\$8,322,672.16
200 Personnel Services – Employee Benefits				
210 Group Insurance – Contracted Provider	1,204,849.49	1,104,102.81	120,008.45	2,428,960.75
220 Social Security Contributions	289,546.31	308,466.86	30,137.47	628,150.64
230 PSERS Retirement Contributions	1,145,593.19	1,229,316.79	121,899.72	2,496,809.70
250 Unemployment Compensation	3,520.05	4,729.43		8,249.48
260 Workers' Compensation	20,691.31	29,167.20		49,858.51
270 Group Insurance – Self-Insurance	(54,397.12)	(54,397.12)		(108,794.24)
280 Other Post-Employment Benefits (OPEB)	153,339.11	153,339.09		306,678.20
Total Personnel Services – Employee Benefits	\$2,763,142.34	\$2,774,725.06	\$272,045.64	\$5,809,913.04
300 Purchased Professional and Technical Services				
322 Professional Educational Services – lus	4,141.96	11,590.36	49,898.25	65,630.57
323 Professional Educational Services – Other Educational Agencies	51,214.63	44,996.87		96,211.50
329 Professional Educational Services – Other	149,114.74	102,237.93		251,352.67
340 Technical Services	13,710.04	13,710.03		27,420.07
390 Other Purchased Professional and Technical Services			34,451.94	34,451.94
Total Purchased Professional and Technical Services	\$218,181.37	\$172,535.19	\$84,350.19	\$475,066.75
400 Purchased Property Services				
430 Repairs and Maintenance Services	10,050.04	15,937.81		25,987.85
440 Rentals	24,064.39	10,734.77		34,799.16
Total Purchased Property Services	\$34,114.43	\$26,672.58		\$60,787.01
500 Other Purchased Services				
530 Communications	4,866.15	5,554.00		10,420.15
550 Printing and Binding		10,315.43		10,315.43
562 Tuition To Pennsylvania Charter Schools	1,156,992.04	1,224,363.44		2,381,355.48
568 Tuition To Private Residential Rehabilitative Institutions (PRRI) [In-State] and Detention Centers	14,750.17	14,750.16		29,500.33
580 Travel	6.27	189.01		195.28
Total Other Purchased Services	\$1,176,614.63	\$1,255,172.04		\$2,431,786.67
600 Supplies				
610 General Supplies	85,528.43	99,813.17		185,341.60
630 Food	1,465.72	8.32		1,474.04
640 Books and Periodicals	59,533.37	16,756.46		76,289.83
650 Supplies & Fees – Technology Related	40,812.36	19,724.35		60,536.71
Total Supplies	\$187,339.88	\$136,302.30		\$323,642.18
700 Property				
752 Capital Equipment – Original and Additional	1,097.50	1,097.50		2,195.00
Total Property	\$1,097.50	\$1,097.50		\$2,195.00
800 Other Objects				
810 Dues and Fees	720.00	6,533.00		7,253.00

General Fund (10)

1100 Regular Programs – Elementary / Secondary

	<u>Elementary</u>	<u>Secondary</u>	<u>Federal</u>	<u>Total</u>
Total Other Objects	\$720.00	\$6,533.00		\$7,253.00
Total 1100 Regular Programs – Elementary / Secondary	\$8,219,339.23	\$8,456,163.65	\$757,812.93	\$17,433,315.81

General Fund (10)

	<u>Elementary</u>	<u>Secondary</u>	<u>Federal</u>	<u>Total</u>
1110 Regular Programs				
100 Personnel Services – Salaries				
100 Personnel Services – Salaries	3,838,129.08	4,083,125.98		7,921,255.06
Total Personnel Services – Salaries	\$3,838,129.08	\$4,083,125.98		\$7,921,255.06
200 Personnel Services – Employee Benefits				
210 Group Insurance – Contracted Provider	1,204,849.49	1,104,102.81		2,308,952.30
220 Social Security Contributions	289,546.31	308,466.86		598,013.17
230 PSERS Retirement Contributions	1,145,593.19	1,229,316.79		2,374,909.98
250 Unemployment Compensation	3,520.05	4,729.43		8,249.48
260 Workers' Compensation	20,691.31	29,167.20		49,858.51
270 Group Insurance – Self-Insurance	(54,397.12)	(54,397.12)		(108,794.24)
280 Other Post-Employment Benefits (OPEB)	153,339.11	153,339.09		306,678.20
Total Personnel Services – Employee Benefits	\$2,763,142.34	\$2,774,725.06		\$5,537,867.40
300 Purchased Professional and Technical Services				
322 Professional Educational Services – Ius	4,141.96	11,590.36	49,898.25	65,630.57
323 Professional Educational Services – Other Educational Agencies	51,214.63	44,996.87		96,211.50
329 Professional Educational Services – Other	149,114.74	102,237.93		251,352.67
340 Technical Services	13,710.04	13,710.03		27,420.07
Total Purchased Professional and Technical Services	\$218,181.37	\$172,535.19	\$49,898.25	\$440,614.81
400 Purchased Property Services				
430 Repairs and Maintenance Services	10,050.04	15,937.81		25,987.85
440 Rentals	24,064.39	10,734.77		34,799.16
Total Purchased Property Services	\$34,114.43	\$26,672.58		\$60,787.01
500 Other Purchased Services				
530 Communications	4,866.15	5,554.00		10,420.15
550 Printing and Binding		10,315.43		10,315.43
562 Tuition To Pennsylvania Charter Schools	1,156,992.04	1,224,363.44		2,381,355.48
568 Tuition To Private Residential Rehabilitative Institutions (PRRI) (In-State) and Detention Centers	14,750.17	14,750.16		29,500.33
580 Travel	6.27	189.01		195.28
Total Other Purchased Services	\$1,176,614.63	\$1,255,172.04		\$2,431,786.67
600 Supplies				
610 General Supplies	85,528.43	99,813.17		185,341.60
630 Food	1,465.72	8.32		1,474.04
640 Books and Periodicals	59,533.37	16,756.46		76,289.83
650 Supplies & Fees – Technology Related	40,812.36	19,724.35		60,536.71
Total Supplies	\$187,339.88	\$136,302.30		\$323,642.18
700 Property				
752 Capital Equipment – Original and Additional	1,097.50	1,097.50		2,195.00
Total Property	\$1,097.50	\$1,097.50		\$2,195.00
800 Other Objects				
810 Dues and Fees	720.00	6,533.00		7,253.00
Total Other Objects	\$720.00	\$6,533.00		\$7,253.00
Total 1110 Regular Programs	\$8,219,339.23	\$8,456,163.66	\$49,898.25	\$16,725,401.13

General Fund (10)

1190 Federally-Funded Regular Programs

	<u>Elementary</u>	<u>Secondary</u>	<u>Federal</u>	<u>Total</u>
100 Personnel Services – Salaries				
100 Personnel Services – Salaries			401,417.10	401,417.10
Total Personnel Services – Salaries			\$401,417.10	\$401,417.10
200 Personnel Services – Employee Benefits				
210 Group Insurance – Contracted Provider			120,008.45	120,008.45
220 Social Security Contributions			30,137.47	30,137.47
230 PSERS Retirement Contributions			121,899.72	121,899.72
Total Personnel Services – Employee Benefits			\$272,045.64	\$272,045.64
300 Purchased Professional and Technical Services				
390 Other Purchased Professional and Technical Services			34,451.94	34,451.94
Total Purchased Professional and Technical Services			\$34,451.94	\$34,451.94
Total 1190 Federally-Funded Regular Programs			\$707,914.68	\$707,914.68

General Fund (10)

1200 Special Programs – Elementary / Secondary	Elementary	Secondary	Federal	Total
100 Personnel Services – Salaries				
100 Personnel Services – Salaries	1,820,651.27	1,647,873.76		3,468,525.03
Total Personnel Services – Salaries	\$1,820,651.27	\$1,647,873.76		\$3,468,525.03
200 Personnel Services – Employee Benefits				
210 Group Insurance – Contracted Provider	512,464.27	578,394.46		1,090,858.73
220 Social Security Contributions	137,242.57	123,804.10		261,046.67
230 PSERS Retirement Contributions	545,232.87	495,722.45		1,040,955.32
250 Unemployment Compensation	1,020.62	871.46		1,892.08
260 Workers' Compensation	7,803.66	7,854.22		15,657.88
270 Group Insurance – Self-Insurance	4,182.13	3,169.53		7,351.66
280 Other Post-Employment Benefits (OPEB)	7,793.90	7,793.88		15,587.78
Total Personnel Services – Employee Benefits	\$1,215,740.02	\$1,217,610.10		\$2,433,350.12
300 Purchased Professional and Technical Services				
322 Professional Educational Services – lus	116,909.66	211,034.38	454,163.00	782,107.04
323 Professional Educational Services – Other Educational Agencies	27.01			27.01
329 Professional Educational Services – Other	339.25	339.25		678.50
330 Other Professional Services	46,245.95	12,688.22		58,934.17
Total Purchased Professional and Technical Services	\$163,521.87	\$224,061.85	\$454,163.00	\$841,746.72
500 Other Purchased Services				
561 Tuition To Other School Districts Within the State	27,649.18	368,849.48		396,498.66
569 Tuition – Other	22,295.00	205,663.05		227,958.05
580 Travel	25.02	25.01		50.03
Total Other Purchased Services	\$49,969.20	\$574,537.54		\$624,506.74
600 Supplies				
610 General Supplies	9,666.85	3,874.79	4,843.77	18,385.41
630 Food	225.00	225.00		450.00
640 Books and Periodicals	1,924.02	1,508.79	15,877.61	19,310.42
650 Supplies & Fees – Technology Related	1,650.00	1,650.00		3,300.00
Total Supplies	\$13,465.87	\$7,258.58	\$20,721.38	\$41,445.83
800 Other Objects				
810 Dues and Fees	500.00		500.00	1,000.00
Total Other Objects	\$500.00		\$500.00	\$1,000.00
Total 1200 Special Programs – Elementary / Secondary	\$3,263,848.23	\$3,671,341.83	\$475,384.38	\$7,410,574.44

LEA : 129546103 Pottsville Area SD

Printed 11/13/2017 11:30:44 AM

Page - 8 of 24

General Fund (10)

1210 Life Skills Support

	Elementary	Secondary	Federal	Total
100 Personnel Services – Salaries				
100 Personnel Services – Salaries	177,383.88	332,345.89		509,729.77
Total Personnel Services – Salaries	\$177,383.88	\$332,345.89		\$509,729.77
200 Personnel Services – Employee Benefits				
210 Group Insurance – Contracted Provider	52,924.82	117,836.17		170,760.99
220 Social Security Contributions	13,423.21	25,210.24		38,633.45
230 PSERS Retirement Contributions	51,513.37	99,266.82		150,780.19
250 Unemployment Compensation	121.59	77.72		199.31
260 Workers' Compensation	749.45	811.84		1,561.29
270 Group Insurance – Self-Insurance	1,021.79	1,021.79		2,043.58
Total Personnel Services – Employee Benefits	\$119,754.23	\$244,224.58		\$363,978.81
600 Supplies				
610 General Supplies	852.43	878.35		1,730.78
630 Food	150.00	150.00		300.00
640 Books and Periodicals	665.67	459.44		1,125.11
Total Supplies	\$1,668.10	\$1,487.79		\$3,155.89
Total 1210 Life Skills Support	\$298,806.21	\$578,058.26		\$876,864.47

General Fund (10)

	<u>Elementary</u>	<u>Secondary</u>	<u>Federal</u>	<u>Total</u>
1220 Sensory Support				
100 Personnel Services – Salaries				
100 Personnel Services – Salaries	218,160.83	61,963.09		280,123.92
Total Personnel Services – Salaries	\$218,160.83	\$61,963.09		\$280,123.92
200 Personnel Services – Employee Benefits				
210 Group Insurance – Contracted Provider	44,603.51	10,755.56		55,359.07
220 Social Security Contributions	16,435.70	4,685.00		21,120.70
230 PSERS Retirement Contributions	65,513.77	18,607.42		84,121.19
250 Unemployment Compensation	114.85	59.16		174.01
260 Workers' Compensation	725.52	454.72		1,180.24
270 Group Insurance – Self-Insurance	995.88	995.86		1,991.74
280 Other Post-Employment Benefits (OPEB)	1,692.64	1,692.62		3,385.26
Total Personnel Services – Employee Benefits	\$130,081.87	\$37,250.34		\$167,332.21
300 Purchased Professional and Technical Services				
323 Professional Educational Services – Other Educational Agencies	27.01			27.01
330 Other Professional Services	9,262.75	2,801.37		12,064.12
Total Purchased Professional and Technical Services	\$9,289.76	\$2,801.37		\$12,091.13
600 Supplies				
610 General Supplies	2,970.16			2,970.16
640 Books and Periodicals	208.97			208.97
Total Supplies	\$3,179.13			\$3,179.13
800 Other Objects				
810 Dues and Fees	500.00		500.00	1,000.00
Total Other Objects	\$500.00		\$500.00	\$1,000.00
Total 1220 Sensory Support	\$361,211.59	\$102,014.80	\$500.00	\$463,726.39

General Fund (10)

1230 Emotional Support

	<u>Elementary</u>	<u>Secondary</u>	<u>Federal</u>	<u>Total</u>
100 Personnel Services – Salaries				
100 Personnel Services – Salaries	441,103.67	209,176.83		650,280.50
Total Personnel Services – Salaries	\$441,103.67	\$209,176.83		\$650,280.50
200 Personnel Services – Employee Benefits				
210 Group Insurance – Contracted Provider	182,693.10	56,694.08		239,387.18
220 Social Security Contributions	33,141.59	15,741.95		48,883.54
230 PSERS Retirement Contributions	131,754.22	62,806.51		194,560.73
250 Unemployment Compensation	164.18	128.94		293.12
260 Workers' Compensation	1,686.25	1,732.90		3,419.15
270 Group Insurance – Self-Insurance	2,708.62	1,973.11		4,681.73
Total Personnel Services – Employee Benefits	\$352,147.96	\$139,077.49		\$491,225.45
300 Purchased Professional and Technical Services				
330 Other Professional Services	249.75	249.75		499.50
Total Purchased Professional and Technical Services	\$249.75	\$249.75		\$499.50
500 Other Purchased Services				
561 Tuition To Other School Districts Within the State		82,628.21		82,628.21
Total Other Purchased Services		\$82,628.21		\$82,628.21
600 Supplies				
610 General Supplies	1,094.21	774.22	157.23	2,025.66
630 Food	75.00	75.00		150.00
640 Books and Periodicals	115.00	115.00		230.00
Total Supplies	\$1,284.21	\$964.22	\$157.23	\$2,405.66
Total 1230 Emotional Support	\$794,785.59	\$432,096.50	\$157.23	\$1,227,039.32

General Fund (10)

	Elementary	Secondary	Federal	Total
1240 Academic Support				
100 Personnel Services – Salaries				
100 Personnel Services – Salaries	853,180.14	932,146.98		1,785,327.12
Total Personnel Services – Salaries	\$853,180.14	\$932,146.98		\$1,785,327.12
200 Personnel Services – Employee Benefits				
210 Group Insurance – Contracted Provider	196,199.04	357,064.85		553,263.89
220 Social Security Contributions	64,431.14	69,883.98		134,315.12
230 PSERS Retirement Contributions	257,679.65	280,980.38		538,660.03
250 Unemployment Compensation	487.36	517.50		1,004.86
260 Workers' Compensation	3,817.42	4,053.56		7,870.98
270 Group Insurance – Self-Insurance	(544.16)	(821.23)		(1,365.39)
280 Other Post-Employment Benefits (OPEB)	2,601.26	2,601.26		5,202.52
Total Personnel Services – Employee Benefits	\$524,671.71	\$714,280.30		\$1,238,952.01
600 Supplies				
610 General Supplies	4,675.45	2,147.30	786.54	7,609.29
640 Books and Periodicals	859.38	859.36	15,877.61	17,596.35
650 Supplies & Fees – Technology Related	1,650.00	1,650.00		3,300.00
Total Supplies	\$7,184.83	\$4,666.66	\$16,664.15	\$28,505.64
Total 1240 Academic Support	\$1,385,036.68	\$1,651,083.94	\$16,664.15	\$3,052,784.77

General Fund (10)

1241 Learning Support – Public

	<u>Elementary</u>	<u>Secondary</u>	<u>Federal</u>	<u>Total</u>
100 Personnel Services – Salaries				
100 Personnel Services – Salaries	832,619.54	910,414.66		1,743,034.20
Total Personnel Services – Salaries	\$832,619.54	\$910,414.66		\$1,743,034.20
200 Personnel Services – Employee Benefits				
210 Group Insurance – Contracted Provider	189,202.22	350,150.61		539,352.83
220 Social Security Contributions	62,884.29	68,258.28		131,142.57
230 PSERS Retirement Contributions	251,505.23	274,454.10		525,959.33
250 Unemployment Compensation	487.36	517.50		1,004.86
260 Workers' Compensation	3,817.42	4,053.56		7,870.98
270 Group Insurance – Self-Insurance	(544.16)	(821.23)		(1,365.39)
280 Other Post-Employment Benefits (OPEB)	2,601.26	2,601.26		5,202.52
Total Personnel Services – Employee Benefits	\$509,953.62	\$699,214.08		\$1,209,167.70
600 Supplies				
610 General Supplies	4,675.45	2,147.30	786.54	7,609.29
640 Books and Periodicals	859.38	859.36	15,877.61	17,596.35
650 Supplies & Fees – Technology Related	1,650.00	1,650.00		3,300.00
Total Supplies	\$7,184.83	\$4,656.66	\$16,664.15	\$28,505.64
Total 1241 Learning Support – Public	\$1,349,757.99	\$1,614,285.40	\$16,664.15	\$2,980,707.54

General Fund (10)

1243 Gifted Support

100 Personnel Services – Salaries

100 Personnel Services – Salaries

Total Personnel Services – Salaries

200 Personnel Services – Employee Benefits

210 Group Insurance – Contracted Provider

220 Social Security Contributions

230 PSERS Retirement Contributions

Total Personnel Services – Employee Benefits

Total 1243 Gifted Support

	<u>Elementary</u>	<u>Secondary</u>	<u>Federal</u>	<u>Total</u>
	20,560.60	21,732.32		42,292.92
	\$20,560.60	\$21,732.32		\$42,292.92
	6,996.82	6,914.24		13,911.06
	1,546.85	1,625.70		3,172.55
	6,174.42	6,526.28		12,700.70
	\$14,718.09	\$15,066.22		\$29,784.31
	\$35,278.69	\$36,798.54		\$72,077.23

General Fund (10)

1260 Physical Support

300 Purchased Professional and Technical Services

330 Other Professional Services

Total Purchased Professional and Technical Services

Total 1260 Physical Support

	Elementary	Secondary	Federal	Total
	28,303.78	1,749.05		30,052.83
	\$28,303.78	\$1,749.05		\$30,052.83
	\$28,303.78	\$1,749.05		\$30,052.83

General Fund (10)

1280 Early Intervention Support

300 Purchased Professional and Technical Services

322 Professional Educational Services – Ius

Total Purchased Professional and Technical Services

Total 1280 Early Intervention Support

	<u>Elementary</u>	<u>Secondary</u>	<u>Federal</u>	<u>Total</u>
	3,820.36			3,820.36
	\$3,820.36			\$3,820.36
	\$3,820.36			\$3,820.36

General Fund (10)

1290 Special Programs - Other Support

	<u>Elementary</u>	<u>Secondary</u>	<u>Federal</u>	<u>Total</u>
100 Personnel Services – Salaries				
100 Personnel Services – Salaries	130,822.75	112,240.97		243,063.72
Total Personnel Services – Salaries	\$130,822.75	\$112,240.97		\$243,063.72
200 Personnel Services – Employee Benefits				
210 Group Insurance – Contracted Provider	36,043.80	36,043.80		72,087.60
220 Social Security Contributions	9,810.93	8,282.93		18,093.86
230 PSERS Retirement Contributions	38,771.86	34,061.32		72,833.18
250 Unemployment Compensation	132.64	88.14		220.78
260 Workers' Compensation	825.02	801.20		1,626.22
280 Other Post-Employment Benefits (OPEB)	3,500.00	3,500.00		7,000.00
Total Personnel Services – Employee Benefits	\$89,084.25	\$82,777.39		\$171,861.64
300 Purchased Professional and Technical Services				
322 Professional Educational Services – Ius	113,089.30	211,034.38	454,163.00	778,286.68
329 Professional Educational Services – Other	339.25	339.25		678.50
330 Other Professional Services	8,429.67	7,888.05		16,317.72
Total Purchased Professional and Technical Services	\$121,858.22	\$219,261.68	\$454,163.00	\$795,282.90
500 Other Purchased Services				
561 Tuition To Other School Districts Within the State	27,649.18	286,221.27		313,870.45
569 Tuition – Other	22,295.00	205,663.05		227,958.05
580 Travel	25.02	25.01		50.03
Total Other Purchased Services	\$49,969.20	\$491,909.33		\$541,878.53
600 Supplies				
610 General Supplies	74.60	74.92	3,900.00	4,049.52
640 Books and Periodicals	75.00	74.99		149.99
Total Supplies	\$149.60	\$149.91	\$3,900.00	\$4,199.51
Total 1290 Special Programs - Other Support	\$391,884.02	\$906,339.28	\$458,063.00	\$1,756,286.30

General Fund (10)

1300 Vocational Education

	<u>Elementary</u>	<u>Secondary</u>	<u>Federal</u>	<u>Total</u>
100 Personnel Services – Salaries				
100 Personnel Services – Salaries		273,472.96		273,472.96
Total Personnel Services – Salaries		\$273,472.96		\$273,472.96
200 Personnel Services – Employee Benefits				
210 Group Insurance – Contracted Provider		83,082.35		83,082.35
220 Social Security Contributions		20,589.49		20,589.49
230 PSERS Retirement Contributions		82,123.93		82,123.93
250 Unemployment Compensation		198.88		198.88
260 Workers' Compensation		1,791.60		1,791.60
270 Group Insurance – Self-Insurance		(3,852.97)		(3,852.97)
280 Other Post-Employment Benefits (OPEB)		26,086.86		26,086.86
Total Personnel Services – Employee Benefits		\$210,020.14		\$210,020.14
500 Other Purchased Services				
564 Tuition To Career and Technology Centers		813,320.00		813,320.00
Total Other Purchased Services		\$813,320.00		\$813,320.00
600 Supplies				
640 Books and Periodicals		9,740.70		9,740.70
Total Supplies		\$9,740.70		\$9,740.70
Total 1300 Vocational Education		\$1,306,553.80		\$1,306,553.80

General Fund (10)

1400 Other Instructional Programs – Elementary / Secondary

	<u>Elementary</u>	<u>Secondary</u>	<u>Federal</u>	<u>Total</u>
100 Personnel Services – Salaries				
100 Personnel Services – Salaries	43,887.83	60,904.29		104,792.12
Total Personnel Services – Salaries	\$43,887.83	\$60,904.29		\$104,792.12
200 Personnel Services – Employee Benefits				
210 Group Insurance – Contracted Provider	23,410.28	23,473.28		46,883.56
220 Social Security Contributions	3,273.25	4,574.43		7,847.68
230 PSERS Retirement Contributions	13,179.59	18,289.70		31,469.29
250 Unemployment Compensation	26.40	26.40		52.80
260 Workers' Compensation	204.21	209.54		413.75
Total Personnel Services – Employee Benefits	\$40,093.73	\$46,573.35		\$86,667.08
300 Purchased Professional and Technical Services				
322 Professional Educational Services – Ius	8,193.00	34,365.00		42,558.00
Total Purchased Professional and Technical Services	\$8,193.00	\$34,365.00		\$42,558.00
400 Purchased Property Services				
440 Rentals	222.53	222.52		445.05
Total Purchased Property Services	\$222.53	\$222.52		\$445.05
500 Other Purchased Services				
561 Tuition To Other School Districts Within the State	44,409.73	129,917.92		174,327.65
569 Tuition – Other	10,035.50	159,031.55		169,067.05
Total Other Purchased Services	\$54,445.23	\$288,949.47		\$343,394.70
Total 1400 Other Instructional Programs – Elementary / Secondary	\$146,842.32	\$431,014.63		\$577,856.95

General Fund (10)

	<u>Elementary</u>	<u>Secondary</u>	<u>Federal</u>	<u>Total</u>
1430 Homebound Instruction				
100 Personnel Services – Salaries				
100 Personnel Services – Salaries	1,444.00	1,684.00		3,128.00
Total Personnel Services – Salaries	\$1,444.00	\$1,684.00		\$3,128.00
200 Personnel Services – Employee Benefits				
220 Social Security Contributions	107.76	125.59		233.35
230 PSERS Retirement Contributions	433.65	505.71		939.36
250 Unemployment Compensation	0.94	0.94		1.88
260 Workers' Compensation	4.76	10.09		14.85
Total Personnel Services – Employee Benefits	\$547.11	\$642.33		\$1,189.44
Total 1430 Homebound Instruction	\$1,991.11	\$2,326.33		\$4,317.44

General Fund (10)

1440 Alternative Regular Education Programs

	Elementary	Secondary	Federal	Total
100 Personnel Services – Salaries				
100 Personnel Services – Salaries	33,638.50	33,638.50		67,277.00
Total Personnel Services – Salaries	\$33,638.50	\$33,638.50		\$67,277.00
200 Personnel Services – Employee Benefits				
210 Group Insurance – Contracted Provider	11,567.78	11,567.78		23,135.56
220 Social Security Contributions	2,526.67	2,526.66		5,053.33
230 PSERS Retirement Contributions	10,101.64	10,101.64		20,203.28
250 Unemployment Compensation	25.46	25.46		50.92
260 Workers' Compensation	199.45	199.45		398.90
Total Personnel Services – Employee Benefits	\$24,421.00	\$24,420.99		\$48,841.99
300 Purchased Professional and Technical Services				
322 Professional Educational Services – Ius	8,193.00	34,365.00		42,558.00
Total Purchased Professional and Technical Services	\$8,193.00	\$34,365.00		\$42,558.00
400 Purchased Property Services				
440 Rentals	222.53	222.52		445.05
Total Purchased Property Services	\$222.53	\$222.52		\$445.05
500 Other Purchased Services				
561 Tuition To Other School Districts Within the State	44,409.73	129,917.92		174,327.65
569 Tuition – Other	10,035.50	159,031.55		169,067.05
Total Other Purchased Services	\$54,445.23	\$288,949.47		\$343,394.70
Total 1440 Alternative Regular Education Programs	\$120,920.26	\$381,596.48		\$502,516.74

General Fund (10)

	<u>Elementary</u>	<u>Secondary</u>	<u>Federal</u>	<u>Total</u>
1441 Adjudicated / Court-Placed Programs				
100 <u>Personnel Services – Salaries</u>				
100 Personnel Services – Salaries	33,638.50	33,638.50		67,277.00
Total Personnel Services – Salaries	\$33,638.50	\$33,638.50		\$67,277.00
200 <u>Personnel Services – Employee Benefits</u>				
210 Group Insurance – Contracted Provider	11,567.78	11,567.78		23,135.56
220 Social Security Contributions	2,526.67	2,526.66		5,053.33
230 PSERS Retirement Contributions	10,101.64	10,101.64		20,203.28
250 Unemployment Compensation	25.46	25.46		50.92
260 Workers' Compensation	199.45	199.45		398.90
Total Personnel Services – Employee Benefits	\$24,421.00	\$24,420.99		\$48,841.99
400 <u>Purchased Property Services</u>				
440 Rentals	222.53	222.52		445.05
Total Purchased Property Services	\$222.53	\$222.52		\$445.05
500 <u>Other Purchased Services</u>				
561 Tuition To Other School Districts Within the State	44,409.73	129,917.92		174,327.65
Total Other Purchased Services	\$44,409.73	\$129,917.92		\$174,327.65
Total 1441 Adjudicated / Court-Placed Programs	\$102,691.76	\$188,199.93		\$290,891.69

General Fund (10)

1442 Alternative Education Programs	Elementary	Secondary	Federal	Total
300 <u>Purchased Professional and Technical Services</u>				
322 Professional Educational Services – Ius	8,193.00	34,365.00		42,558.00
Total Purchased Professional and Technical Services	\$8,193.00	\$34,365.00		\$42,558.00
500 <u>Other Purchased Services</u>				
569 Tuition – Other	10,035.50	159,031.55		169,067.05
Total Other Purchased Services	\$10,035.50	\$159,031.55		\$169,067.05
Total 1442 Alternative Education Programs	\$18,228.50	\$193,396.55		\$211,625.05

General Fund (10)

	Elementary	Secondary	Federal	Total
1490 Additional Other Instructional Programs				
100 Personnel Services – Salaries				
100 Personnel Services – Salaries	8,805.33	25,581.79		34,387.12
Total Personnel Services – Salaries	\$8,805.33	\$25,581.79		\$34,387.12
200 Personnel Services – Employee Benefits				
210 Group Insurance – Contracted Provider	11,842.50	11,905.50		23,748.00
220 Social Security Contributions	638.82	1,922.18		2,561.00
230 PSERS Retirement Contributions	2,644.30	7,682.35		10,326.65
Total Personnel Services – Employee Benefits	\$15,125.62	\$21,510.03		\$36,635.65
Total 1490 Additional Other Instructional Programs	\$23,930.95	\$47,091.82		\$71,022.77

General Fund (10)

1500 Nonpublic School Programs

300 Purchased Professional and Technical Services

322 Professional Educational Services – lus

Total Purchased Professional and Technical Services

Total 1500 Nonpublic School Programs

	<u>Elementary</u>	<u>Secondary</u>	<u>Federal</u>	<u>Total</u>
			16,949.91	16,949.91
			\$16,949.91	\$16,949.91
			\$16,949.91	\$16,949.91

General Fund (10)

2000 Support Services

Total

100 Personnel Services – Salaries

100 Personnel Services – Salaries

5,128,628.96

Total Personnel Services – Salaries

\$5,128,628.96

200 Personnel Services – Employee Benefits

210 Group Insurance – Contracted Provider

1,839,811.28

220 Social Security Contributions

380,222.25

230 PSERS Retirement Contributions

1,493,834.53

240 Tuition Reimbursement

174,152.00

250 Unemployment Compensation

12,235.06

260 Workers' Compensation

26,858.85

270 Group Insurance – Self-Insurance

(12,730.30)

280 Other Post-Employment Benefits (OPEB)

66,931.93

Total Personnel Services – Employee Benefits

\$3,981,315.60

300 Purchased Professional and Technical Services

322 Professional Educational Services – lus

1,864.50

324 Professional Educational Services – Employee Training and Development Services

4,123.45

329 Professional Educational Services – Other

11,362.50

330 Other Professional Services

751,078.46

340 Technical Services

13,902.87

350 Security / Safety Services

5,540.38

Total Purchased Professional and Technical Services

\$787,872.16

400 Purchased Property Services

410 Cleaning Services

23,630.07

420 Utility Services

393,650.77

430 Repairs and Maintenance Services

396,228.66

440 Rentals

170,526.34

450 Construction Services

43,447.92

460 Extermination Services

9,103.12

Total Purchased Property Services

\$1,036,586.88

500 Other Purchased Services

511 Student Transportation Services from Another LEA Within the State

1,101.60

513 Contracted Carriers

6,011.89

516 Student Transportation Services From the IU

69,869.40

520 Insurance – General

250.00

521 Fire Insurance

152.90

522 Automotive Liability Insurance

37,474.00

523 General Property and Liability Insurance

121,894.00

530 Communications

90,678.54

549 Other Advertising/Public Relations

8,693.34

550 Printing and Binding

14,091.76

580 Travel

1,246.92

Total Other Purchased Services

\$351,464.35

600 Supplies

610 General Supplies

351,363.06

General Fund (10)

2000 Support Services

	<u>Total</u>
600 Supplies	
620 Energy	283,850.37
630 Food	3,794.74
640 Books and Periodicals	23,748.49
650 Supplies & Fees - Technology Related	7,322.32
Total Supplies	\$670,078.98
700 Property	
752 Capital Equipment - Original and Additional	7,453.62
758 Capitalized Technology Software - Original	13,530.09
Total Property	\$20,983.71
800 Other Objects	
810 Dues and Fees	14,206.25
Total Other Objects	\$14,206.25
Total 2000 Support Services	\$11,991,136.89

General Fund (10)

	<u>Elementary</u>	<u>Secondary</u>	<u>Federal</u>	<u>Total</u>
2100 Support Services – Students				
100 Personnel Services – Salaries				
100 Personnel Services – Salaries	141,013.44	326,889.55		739,704.31
Total Personnel Services – Salaries	\$141,013.44	\$326,889.55		\$739,704.31
200 Personnel Services – Employee Benefits				
210 Group Insurance – Contracted Provider	35,656.56	99,777.26		272,105.18
220 Social Security Contributions	9,681.14	23,224.16		53,218.38
230 PSERS Retirement Contributions	38,416.08	94,234.82		214,272.74
250 Unemployment Compensation	116.26	214.16		514.99
260 Workers' Compensation	885.99	1,649.85		3,981.49
270 Group Insurance – Self-Insurance	(23.22)	(1,121.39)		(3,756.04)
280 Other Post-Employment Benefits (OPEB)	3,500.00	5,633.36		14,883.36
Total Personnel Services – Employee Benefits	\$88,232.81	\$223,612.22		\$555,220.10
300 Purchased Professional and Technical Services				
324 Professional Educational Services – Employee Training and Development Services				160.00
340 Technical Services				6,282.87
Total Purchased Professional and Technical Services				\$6,442.87
400 Purchased Property Services				
430 Repairs and Maintenance Services		1,050.92		1,432.16
440 Rentals		3,964.68		5,985.14
Total Purchased Property Services		\$5,015.60		\$7,417.30
500 Other Purchased Services				
530 Communications	168.38	338.37		3,189.40
550 Printing and Binding				1,059.30
Total Other Purchased Services	\$168.38	\$338.37		\$4,248.70
600 Supplies				
610 General Supplies	3,642.35	3,313.30		7,972.68
640 Books and Periodicals	275.99	275.99		551.98
Total Supplies	\$3,918.34	\$3,589.29		\$8,524.66
800 Other Objects				
810 Dues and Fees	210.00	85.00		955.00
Total Other Objects	\$210.00	\$85.00		\$955.00
Total 2100 Support Services – Students	\$233,542.97	\$659,530.03		\$1,322,512.94

General Fund (10)

	Elementary	Secondary	Federal	Total
2120 Guidance Services				
100 Personnel Services – Salaries				
100 Personnel Services – Salaries	39,007.68	216,035.33		255,043.01
Total Personnel Services – Salaries	\$39,007.68	\$216,035.33		\$255,043.01
200 Personnel Services – Employee Benefits				
210 Group Insurance – Contracted Provider	10,851.90	82,750.25		93,602.15
220 Social Security Contributions	2,942.32	15,795.45		18,737.77
230 PSERS Retirement Contributions	11,714.02	64,875.50		76,589.52
250 Unemployment Compensation	23.82	152.55		176.37
260 Workers' Compensation	193.39	1,188.05		1,381.44
270 Group Insurance – Self-Insurance	(23.22)	(1,121.39)		(1,144.61)
280 Other Post-Employment Benefits (OPEB)	3,500.00	5,633.36		9,133.36
Total Personnel Services – Employee Benefits	\$29,202.23	\$169,273.77		\$198,476.00
400 Purchased Property Services				
430 Repairs and Maintenance Services		1,050.92		1,050.92
440 Rentals		3,964.68		3,964.68
Total Purchased Property Services		\$5,015.60		\$5,015.60
500 Other Purchased Services				
530 Communications	168.38	338.37		506.75
Total Other Purchased Services	\$168.38	\$338.37		\$506.75
600 Supplies				
610 General Supplies	33.54	385.64		419.18
Total Supplies	\$33.54	\$385.64		\$419.18
800 Other Objects				
810 Dues and Fees		85.00		85.00
Total Other Objects		\$85.00		\$85.00
Total 2120 Guidance Services	\$68,411.83	\$391,133.71		\$459,545.54

General Fund (10)

2140 Psychological Services

	<u>Elementary</u>	<u>Secondary</u>	<u>Federal</u>	<u>Total</u>
100 Personnel Services – Salaries				
100 Personnel Services – Salaries	102,005.76	102,937.74		204,943.50
Total Personnel Services – Salaries	\$102,005.76	\$102,937.74		\$204,943.50
200 Personnel Services – Employee Benefits				
210 Group Insurance – Contracted Provider	24,804.66	14,228.85		39,033.51
220 Social Security Contributions	6,738.82	6,831.65		13,570.47
230 PSERS Retirement Contributions	26,702.06	26,982.03		53,684.09
250 Unemployment Compensation	92.44	61.61		154.05
260 Workers' Compensation	692.60	461.80		1,154.40
Total Personnel Services – Employee Benefits	\$59,030.58	\$48,565.94		\$107,596.52
600 Supplies				
610 General Supplies	3,608.81	2,927.66		6,536.47
640 Books and Periodicals	275.99	275.99		551.98
Total Supplies	\$3,884.80	\$3,203.65		\$7,088.45
800 Other Objects				
810 Dues and Fees	210.00			210.00
Total Other Objects	\$210.00			\$210.00
Total 2140 Psychological Services	\$165,131.14	\$154,707.33		\$319,838.47

General Fund (10)

2160 Social Work Services

	<u>Elementary</u>	<u>Secondary</u>	<u>Federal</u>	<u>Total</u>
100 <u>Personnel Services – Salaries</u>				
100 Personnel Services – Salaries				147,699.45
Total Personnel Services – Salaries				\$147,699.45
200 <u>Personnel Services – Employee Benefits</u>				
210 Group Insurance – Contracted Provider				70,375.68
220 Social Security Contributions				10,952.61
230 PSERS Retirement Contributions				44,353.95
250 Unemployment Compensation				114.84
260 Workers' Compensation				899.49
Total Personnel Services – Employee Benefits				\$126,696.57
300 <u>Purchased Professional and Technical Services</u>				
324 Professional Educational Services – Employee Training and Development Services				160.00
Total Purchased Professional and Technical Services				\$160.00
600 <u>Supplies</u>				
610 General Supplies				690.05
Total Supplies				\$690.05
800 <u>Other Objects</u>				
810 Dues and Fees				540.00
Total Other Objects				\$540.00
Total 2160 Social Work Services				\$275,786.07

General Fund (10)

2170 Student Accounting Services

	<u>Elementary</u>	<u>Secondary</u>	<u>Federal</u>	<u>Total</u>
100 Personnel Services – Salaries				
100 Personnel Services – Salaries				124,101.87
Total Personnel Services – Salaries				\$124,101.87
200 Personnel Services – Employee Benefits				
210 Group Insurance – Contracted Provider				66,295.68
220 Social Security Contributions				9,360.47
230 PSERS Retirement Contributions				37,267.89
250 Unemployment Compensation				69.73
260 Workers' Compensation				546.16
270 Group Insurance – Self-Insurance				(2,611.43)
280 Other Post-Employment Benefits (OPEB)				5,750.00
Total Personnel Services – Employee Benefits				\$116,678.50
300 Purchased Professional and Technical Services				
340 Technical Services				6,282.87
Total Purchased Professional and Technical Services				\$6,282.87
400 Purchased Property Services				
430 Repairs and Maintenance Services				381.24
440 Rentals				2,020.46
Total Purchased Property Services				\$2,401.70
500 Other Purchased Services				
530 Communications				2,682.65
550 Printing and Binding				1,059.30
Total Other Purchased Services				\$3,741.95
600 Supplies				
610 General Supplies				326.98
Total Supplies				\$326.98
800 Other Objects				
810 Dues and Fees				120.00
Total Other Objects				\$120.00
Total 2170 Student Accounting Services				\$253,653.87

General Fund (10)

2190 Other Student Services

	<u>Elementary</u>	<u>Secondary</u>	<u>Federal</u>	<u>Total</u>
100 Personnel Services – Salaries				
100 Personnel Services – Salaries		7,916.48		7,916.48
Total Personnel Services – Salaries		\$7,916.48		\$7,916.48
200 Personnel Services – Employee Benefits				
210 Group Insurance – Contracted Provider		2,798.16		2,798.16
220 Social Security Contributions		597.06		597.06
230 PSERS Retirement Contributions		2,377.29		2,377.29
Total Personnel Services – Employee Benefits		\$5,772.51		\$5,772.51
Total 2190 Other Student Services		\$13,688.99		\$13,688.99

General Fund (10)

2200 Support Services – Instructional Staff	Elementary	Secondary	Federal	Total
100 Personnel Services – Salaries				
100 Personnel Services – Salaries	235,680.82	287,577.12	107,624.32	630,882.26
Total Personnel Services – Salaries	\$235,680.82	\$287,577.12	\$107,624.32	\$630,882.26
200 Personnel Services – Employee Benefits				
210 Group Insurance – Contracted Provider	71,860.72	81,501.17	26,756.02	180,117.91
220 Social Security Contributions	17,802.07	21,697.75	8,087.42	47,587.24
230 PSERS Retirement Contributions	70,775.06	86,359.53	32,319.42	189,454.01
240 Tuition Reimbursement	85,208.25	88,943.75		174,152.00
250 Unemployment Compensation	177.61	185.92		363.53
260 Workers' Compensation	2,026.14	2,074.95		4,101.09
270 Group Insurance – Self-Insurance	2,248.93	(1,840.35)		408.58
Total Personnel Services – Employee Benefits	\$250,098.78	\$278,922.72	\$67,162.86	\$596,184.36
300 Purchased Professional and Technical Services				
322 Professional Educational Services – lus			1,864.50	1,864.50
324 Professional Educational Services – Employee Training and Development Services		529.09	417.00	946.09
Total Purchased Professional and Technical Services		\$529.09	\$2,281.50	\$2,810.59
400 Purchased Property Services				
430 Repairs and Maintenance Services	1,162.83	1,459.92		2,622.75
440 Rentals	6,900.18	15,895.32		22,795.50
Total Purchased Property Services	\$8,063.01	\$17,355.24		\$25,418.25
500 Other Purchased Services				
530 Communications	1,870.66	1,870.66		3,741.32
580 Travel	94.92	161.86		256.78
Total Other Purchased Services	\$1,965.58	\$2,032.52		\$3,998.10
600 Supplies				
610 General Supplies	1,873.13	1,489.93		3,363.06
630 Food	19.14	19.13		38.27
640 Books and Periodicals	9,592.54	9,499.98		19,092.52
650 Supplies & Fees – Technology Related	1,050.00	1,050.00		2,100.00
Total Supplies	\$12,534.81	\$12,059.04		\$24,593.85
800 Other Objects				
810 Dues and Fees	157.76	237.24		395.00
Total Other Objects	\$157.76	\$237.24		\$395.00
Total 2200 Support Services – Instructional Staff	\$508,500.76	\$598,712.97	\$177,068.68	\$1,284,282.41

LEA : 129546103 Pottsville Area SD

Printed 11/13/2017 11:30:46 AM

General Fund (10)

	<u>Elementary</u>	<u>Secondary</u>	<u>Federal</u>	<u>Total</u>
2240 Computer-Assisted Instruction Support Services				
100 Personnel Services – Salaries				
100 Personnel Services – Salaries	144.16	144.15		288.31
Total Personnel Services – Salaries	\$144.16	\$144.15		\$288.31
200 Personnel Services – Employee Benefits				
220 Social Security Contributions	10.87	10.86		21.73
230 PSERS Retirement Contributions	43.29	43.29		86.58
260 Workers' Compensation	626.87	626.86		1,253.73
Total Personnel Services – Employee Benefits	\$681.03	\$681.01		\$1,362.04
Total 2240 Computer-Assisted Instruction Support Services	\$825.19	\$825.16		\$1,650.35

General Fund (10)

2250 School Library Services

	Elementary	Secondary	Federal	Total
100 Personnel Services – Salaries				
100 Personnel Services – Salaries	90,514.96	89,473.28		179,988.24
Total Personnel Services – Salaries	\$90,514.96	\$89,473.28		\$179,988.24
200 Personnel Services – Employee Benefits				
210 Group Insurance – Contracted Provider	25,293.94	19,798.54		45,092.48
220 Social Security Contributions	6,846.64	6,723.68		13,570.32
230 PSERS Retirement Contributions	27,181.63	26,868.91		54,050.54
250 Unemployment Compensation	47.84	56.16		104.00
260 Workers’ Compensation	382.85	431.68		814.53
270 Group Insurance – Self-Insurance	2,248.93	(1,840.35)		408.58
Total Personnel Services – Employee Benefits	\$62,001.83	\$52,038.62		\$114,040.45
400 Purchased Property Services				
430 Repairs and Maintenance Services	1,040.45	1,237.92		2,278.37
440 Rentals	5,967.72	14,962.86		20,930.58
Total Purchased Property Services	\$7,008.17	\$16,200.78		\$23,208.95
600 Supplies				
610 General Supplies	407.16	1,012.74		1,419.90
640 Books and Periodicals	9,402.99	9,310.43		18,713.42
650 Supplies & Fees – Technology Related	1,050.00	1,050.00		2,100.00
Total Supplies	\$10,860.15	\$11,373.17		\$22,233.32
800 Other Objects				
810 Dues and Fees	113.26	192.74		306.00
Total Other Objects	\$113.26	\$192.74		\$306.00
Total 2250 School Library Services	\$170,498.37	\$169,278.59		\$339,776.96

General Fund (10)

2260 Instruction and Curriculum Development Services	Elementary	Secondary	Federal	Total
100 Personnel Services – Salaries				
100 Personnel Services – Salaries	145,021.70	197,959.69		342,981.39
Total Personnel Services – Salaries	\$145,021.70	\$197,959.69		\$342,981.39
200 Personnel Services – Employee Benefits				
210 Group Insurance – Contracted Provider	46,566.78	61,702.63		108,269.41
220 Social Security Contributions	10,944.56	14,963.21		25,907.77
230 PSERS Retirement Contributions	43,550.14	59,447.33		102,997.47
250 Unemployment Compensation	129.77	129.76		259.53
260 Workers' Compensation	1,016.42	1,016.41		2,032.83
Total Personnel Services – Employee Benefits	\$102,207.67	\$137,259.34		\$239,467.01
400 Purchased Property Services				
430 Repairs and Maintenance Services	122.38	222.00		344.38
440 Rentals	932.46	932.46		1,864.92
Total Purchased Property Services	\$1,054.84	\$1,154.46		\$2,209.30
500 Other Purchased Services				
530 Communications	1,870.66	1,870.66		3,741.32
Total Other Purchased Services	\$1,870.66	\$1,870.66		\$3,741.32
600 Supplies				
610 General Supplies	1,465.97	477.19		1,943.16
630 Food	13.50	13.50		27.00
640 Books and Periodicals	189.55	189.55		379.10
Total Supplies	\$1,669.02	\$680.24		\$2,349.26
800 Other Objects				
810 Dues and Fees	44.50	44.50		89.00
Total Other Objects	\$44.50	\$44.50		\$89.00
Total 2260 Instruction and Curriculum Development Services	\$251,868.39	\$338,968.89		\$590,837.28

General Fund (10)

2270 Instructional Staff Professional Development Services

	<u>Elementary</u>	<u>Secondary</u>	<u>Federal</u>	<u>Total</u>
100 Personnel Services – Salaries				
100 Personnel Services – Salaries			107,624.32	107,624.32
Total Personnel Services – Salaries			\$107,624.32	\$107,624.32
200 Personnel Services – Employee Benefits				
210 Group Insurance – Contracted Provider			26,756.02	26,756.02
220 Social Security Contributions			8,087.42	8,087.42
230 PSERS Retirement Contributions			32,319.42	32,319.42
240 Tuition Reimbursement	85,208.25	88,943.75		174,152.00
Total Personnel Services – Employee Benefits	\$85,208.25	\$88,943.75	\$67,162.88	\$241,314.88
300 Purchased Professional and Technical Services				
324 Professional Educational Services – Employee Training and Development Services		529.09	417.00	946.09
Total Purchased Professional and Technical Services		\$529.09	\$417.00	\$946.09
500 Other Purchased Services				
580 Travel	94.92	161.86		256.78
Total Other Purchased Services	\$94.92	\$161.86		\$256.78
600 Supplies				
630 Food	5.64	5.63		11.27
Total Supplies	\$5.64	\$5.63		\$11.27
Total 2270 Instructional Staff Professional Development Services	\$85,308.81	\$89,640.33	\$175,204.18	\$350,153.32

General Fund (10)

2280 Nonpublic Support Services

300 Purchased Professional and Technical Services

322 Professional Educational Services – lus

Total Purchased Professional and Technical Services

Total 2280 Nonpublic Support Services

	Elementary	Secondary	Federal	Total
			1,864.50	1,864.50
			\$1,864.50	\$1,864.50
			\$1,864.50	\$1,864.50

General Fund (10)

	Elementary	Secondary	Federal	Total
2300 Support Services – Administration				
100 Personnel Services – Salaries				
100 Personnel Services – Salaries	389,861.55	396,218.89		1,141,918.89
Total Personnel Services – Salaries	\$389,861.55	\$396,218.89		\$1,141,918.89
200 Personnel Services – Employee Benefits				
210 Group Insurance – Contracted Provider	147,845.38	170,819.11		411,983.71
220 Social Security Contributions	29,515.83	29,652.17		85,299.44
230 PSERS Retirement Contributions	117,075.13	118,715.08		337,796.90
250 Unemployment Compensation	208.85	217.37		583.20
260 Workers' Compensation	1,602.49	1,735.99		4,568.11
270 Group Insurance – Self-Insurance	(7,899.76)	(7,899.77)		(18,375.20)
280 Other Post-Employment Benefits (OPEB)	17,330.66	17,330.66		43,461.43
Total Personnel Services – Employee Benefits	\$305,678.58	\$330,570.61		\$865,317.59
300 Purchased Professional and Technical Services				
324 Professional Educational Services – Employee Training and Development Services				332.00
330 Other Professional Services				452,560.51
Total Purchased Professional and Technical Services				\$452,892.51
400 Purchased Property Services				
430 Repairs and Maintenance Services	245.00	1,351.54		2,003.44
440 Rentals	7,997.34	8,066.94		24,997.74
Total Purchased Property Services	\$8,242.34	\$9,418.48		\$27,001.18
500 Other Purchased Services				
520 Insurance – General				250.00
530 Communications	3,399.50	5,553.36		9,866.81
549 Other Advertising/Public Relations				8,250.62
550 Printing and Binding	911.30	2,479.26		10,238.45
580 Travel				166.32
Total Other Purchased Services	\$4,310.80	\$8,032.62		\$28,772.20
600 Supplies				
610 General Supplies	2,180.44	3,210.80		7,695.86
630 Food	341.05	1,204.28		3,756.47
640 Books and Periodicals	179.00			3,706.00
Total Supplies	\$2,700.49	\$4,415.08		\$15,158.33
800 Other Objects				
810 Dues and Fees	1,943.00	2,650.00		7,558.50
Total Other Objects	\$1,943.00	\$2,650.00		\$7,558.50
Total 2300 Support Services – Administration	\$712,736.76	\$751,305.68		\$2,538,619.20

General Fund (10)

2310 Board Services

	<u>Elementary</u>	<u>Secondary</u>	<u>Federal</u>	<u>Total</u>
100 Personnel Services – Salaries				
100 Personnel Services – Salaries				2,885.35
Total Personnel Services – Salaries				\$2,885.35
200 Personnel Services – Employee Benefits				
220 Social Security Contributions				217.38
230 PSERS Retirement Contributions				866.36
Total Personnel Services – Employee Benefits				\$1,083.74
300 Purchased Professional and Technical Services				
324 Professional Educational Services – Employee Training and Development Services				332.00
330 Other Professional Services				5,820.20
Total Purchased Professional and Technical Services				\$6,152.20
500 Other Purchased Services				
549 Other Advertising/Public Relations				2,250.62
Total Other Purchased Services				\$2,250.62
600 Supplies				
610 General Supplies				377.80
630 Food				1,731.89
640 Books and Periodicals				1,275.00
Total Supplies				\$3,384.69
800 Other Objects				
810 Dues and Fees				926.00
Total Other Objects				\$926.00
Total 2310 Board Services				\$16,682.60

General Fund (10)

2320 Board Treasurer Services

Elementary

Secondary

Federal

Total

500 Other Purchased Services

520 Insurance – General

250.00

Total Other Purchased Services

\$250.00

Total 2320 Board Treasurer Services

\$250.00

General Fund (10)

	<u>Elementary</u>	<u>Secondary</u>	<u>Federal</u>	<u>Total</u>
2330 Tax Assessment and Collection Services				
100 Personnel Services – Salaries				
100 Personnel Services – Salaries				16,155.00
Total Personnel Services – Salaries				\$16,155.00
200 Personnel Services – Employee Benefits				
220 Social Security Contributions				1,235.83
Total Personnel Services – Employee Benefits				\$1,235.83
300 Purchased Professional and Technical Services				
330 Other Professional Services				285,490.03
Total Purchased Professional and Technical Services				\$285,490.03
500 Other Purchased Services				
530 Communications				913.95
550 Printing and Binding				1,482.13
Total Other Purchased Services				\$2,396.08
Total 2330 Tax Assessment and Collection Services				\$305,276.94

General Fund (10)

2350 Legal and Accounting Services

Elementary

Secondary

Federal

Total

300 Purchased Professional and Technical Services

330 Other Professional Services

160,180.95

Total Purchased Professional and Technical Services

\$160,180.95

Total 2350 Legal and Accounting Services

\$160,180.95

General Fund (10)

2360 Office of the Superintendent / Executive Director Services

	<u>Elementary</u>	<u>Secondary</u>	<u>Federal</u>	<u>Total</u>
100 Personnel Services – Salaries				
100 Personnel Services – Salaries				202,684.10
Total Personnel Services – Salaries				\$202,684.10
200 Personnel Services – Employee Benefits				
210 Group Insurance – Contracted Provider				47,048.10
220 Social Security Contributions				14,592.53
230 PSERS Retirement Contributions				60,865.89
250 Unemployment Compensation				156.98
260 Workers' Compensation				1,229.63
270 Group Insurance – Self-Insurance				(2,575.67)
280 Other Post-Employment Benefits (OPEB)				8,800.11
Total Personnel Services – Employee Benefits				\$130,117.57
300 Purchased Professional and Technical Services				
330 Other Professional Services				1,069.33
Total Purchased Professional and Technical Services				\$1,069.33
400 Purchased Property Services				
430 Repairs and Maintenance Services				406.90
440 Rentals				8,933.46
Total Purchased Property Services				\$9,340.36
500 Other Purchased Services				
530 Communications	869.49	869.47		1,738.96
549 Other Advertising/Public Relations				6,000.00
580 Travel				166.32
Total Other Purchased Services	\$869.49	\$869.47		\$7,905.28
600 Supplies				
610 General Supplies				671.38
630 Food				479.25
640 Books and Periodicals				2,252.00
Total Supplies				\$3,402.63
800 Other Objects				
810 Dues and Fees				2,039.50
Total Other Objects				\$2,039.50
Total 2360 Office of the Superintendent / Executive Director Services	\$869.49	\$869.47		\$356,558.77

General Fund (10)

2380 Office of the Principal Services	<u>Elementary</u>	<u>Secondary</u>	<u>Federal</u>	<u>Total</u>
100 Personnel Services – Salaries				
100 Personnel Services – Salaries	389,861.55	396,218.89		786,080.44
Total Personnel Services – Salaries	\$389,861.55	\$396,218.89		\$786,080.44
200 Personnel Services – Employee Benefits				
210 Group Insurance – Contracted Provider	147,845.38	170,819.11		318,664.49
220 Social Security Contributions	29,515.83	29,652.17		59,168.00
230 PSERS Retirement Contributions	117,075.13	118,715.08		235,790.21
250 Unemployment Compensation	208.85	217.37		426.22
260 Workers' Compensation	1,602.49	1,735.99		3,338.48
270 Group Insurance – Self-Insurance	(7,899.76)	(7,899.77)		(15,799.53)
280 Other Post-Employment Benefits (OPEB)	17,330.66	17,330.66		34,661.32
Total Personnel Services – Employee Benefits	\$305,678.58	\$330,570.61		\$636,249.19
400 Purchased Property Services				
430 Repairs and Maintenance Services	245.00	1,351.54		1,596.54
440 Rentals	7,997.34	8,066.94		16,064.28
Total Purchased Property Services	\$8,242.34	\$9,418.48		\$17,660.82
500 Other Purchased Services				
530 Communications	2,530.01	4,683.89		7,213.90
550 Printing and Binding	911.30	2,479.26		3,390.56
Total Other Purchased Services	\$3,441.31	\$7,163.15		\$10,604.46
600 Supplies				
610 General Supplies	2,180.44	3,210.80		5,391.24
630 Food	341.05	1,204.28		1,545.33
640 Books and Periodicals	179.00			179.00
Total Supplies	\$2,700.49	\$4,415.08		\$7,115.57
800 Other Objects				
810 Dues and Fees	1,943.00	2,650.00		4,593.00
Total Other Objects	\$1,943.00	\$2,650.00		\$4,593.00
Total 2380 Office of the Principal Services	\$711,867.27	\$750,436.21		\$1,462,303.48

General Fund (10)

2390 Other Administration Services

	<u>Elementary</u>	<u>Secondary</u>	<u>Federal</u>	<u>Total</u>
100 Personnel Services – Salaries				
100 Personnel Services – Salaries				134,114.00
Total Personnel Services – Salaries				\$134,114.00
200 Personnel Services – Employee Benefits				
210 Group Insurance – Contracted Provider				46,271.12
220 Social Security Contributions				10,085.70
230 PSERS Retirement Contributions				40,274.44
Total Personnel Services – Employee Benefits				\$96,631.26
500 Other Purchased Services				
550 Printing and Binding				5,365.76
Total Other Purchased Services				\$5,365.76
600 Supplies				
610 General Supplies				1,255.44
Total Supplies				\$1,255.44
Total 2390 Other Administration Services				\$237,366.46

General Fund (10)

2400 Support Services – Pupil Health

100 Personnel Services – Salaries

100 Personnel Services – Salaries

Elementary Secondary Federal Total

268,645.13

Total Personnel Services – Salaries

\$268,645.13

200 Personnel Services – Employee Benefits

210 Group Insurance – Contracted Provider

89,457.81

220 Social Security Contributions

20,232.37

230 PSERS Retirement Contributions

78,261.73

250 Unemployment Compensation

220.33

260 Workers' Compensation

1,725.86

270 Group Insurance – Self-Insurance

471.60

Total Personnel Services – Employee Benefits

\$190,369.70

300 Purchased Professional and Technical Services

330 Other Professional Services

2,639.50

Total Purchased Professional and Technical Services

\$2,639.50

400 Purchased Property Services

430 Repairs and Maintenance Services

311.19

440 Rentals

11,880.00

Total Purchased Property Services

\$12,191.19

500 Other Purchased Services

530 Communications

255.77

Total Other Purchased Services

\$255.77

600 Supplies

610 General Supplies

6,208.54

640 Books and Periodicals

99.00

Total Supplies

\$6,307.54

Total 2400 Support Services – Pupil Health

\$480,408.83

General Fund (10)

2420 Medical Services

300 Purchased Professional and Technical Services

330 Other Professional Services

1,558.00

Total Purchased Professional and Technical Services

\$1,558.00

400 Purchased Property Services

430 Repairs and Maintenance Services

185.00

440 Rentals

11,880.00

Total Purchased Property Services

\$12,065.00

600 Supplies

610 General Supplies

5,369.98

Total Supplies

\$5,369.98

Total 2420 Medical Services

\$18,992.98

General Fund (10)

2430 Dental Services

Elementary

Secondary

Federal

Total

300 Purchased Professional and Technical Services

330 Other Professional Services

235.50

Total Purchased Professional and Technical Services

\$235.50

600 Supplies

610 General Supplies

55.84

Total Supplies

\$55.84

Total 2430 Dental Services

\$291.34

General Fund (10)

2440 Nursing Services

	<u>Elementary</u>	<u>Secondary</u>	<u>Federal</u>	<u>Total</u>
100 Personnel Services – Salaries				
100 Personnel Services – Salaries				215,764.77
Total Personnel Services – Salaries				\$215,764.77
200 Personnel Services – Employee Benefits				
210 Group Insurance – Contracted Provider				72,622.34
220 Social Security Contributions				16,256.99
230 PSERS Retirement Contributions				62,381.72
250 Unemployment Compensation				180.30
260 Workers' Compensation				1,412.33
270 Group Insurance – Self-Insurance				471.60
Total Personnel Services – Employee Benefits				\$153,325.28
400 Purchased Property Services				
430 Repairs and Maintenance Services				81.19
Total Purchased Property Services				\$81.19
500 Other Purchased Services				
530 Communications				255.77
Total Other Purchased Services				\$255.77
600 Supplies				
610 General Supplies				85.56
Total Supplies				\$85.56
Total 2440 Nursing Services				\$369,512.57

General Fund (10)

2450 Nonpublic Health Services

	<u>Elementary</u>	<u>Secondary</u>	<u>Federal</u>	<u>Total</u>
100 Personnel Services – Salaries				
100 Personnel Services – Salaries				52,880.36
Total Personnel Services – Salaries				\$52,880.36
200 Personnel Services – Employee Benefits				
210 Group Insurance – Contracted Provider				16,835.47
220 Social Security Contributions				3,975.38
230 PSERS Retirement Contributions				15,880.01
250 Unemployment Compensation				40.03
260 Workers' Compensation				313.53
Total Personnel Services – Employee Benefits				\$37,044.42
400 Purchased Property Services				
430 Repairs and Maintenance Services				45.00
Total Purchased Property Services				\$45.00
600 Supplies				
610 General Supplies				697.16
640 Books and Periodicals				99.00
Total Supplies				\$796.16
Total 2450 Nonpublic Health Services				\$90,765.94

LEA : 129546103 Pottsville Area SD

Printed 11/13/2017 11:30:46 AM

General Fund (10)

2490 Other Health Services

300 Purchased Professional and Technical Services

330 Other Professional Services

Total Purchased Professional and Technical Services

Total 2490 Other Health Services

	<u>Elementary</u>	<u>Secondary</u>	<u>Federal</u>	<u>Total</u>
				846.00
				\$846.00
				\$846.00

General Fund (10)

2500 Support Services – Business

	<u>Elementary</u>	<u>Secondary</u>	<u>Federal</u>	<u>Total</u>
100 Personnel Services – Salaries				
100 Personnel Services – Salaries				394,830.38
Total Personnel Services – Salaries				\$394,830.38
200 Personnel Services – Employee Benefits				
210 Group Insurance – Contracted Provider				169,933.53
220 Social Security Contributions				29,801.90
230 PSERS Retirement Contributions				112,093.10
250 Unemployment Compensation				6,596.99
260 Workers’ Compensation				2,475.09
270 Group Insurance – Self-Insurance				(2,217.53)
280 Other Post-Employment Benefits (OPEB)				5,750.00
Total Personnel Services – Employee Benefits				\$324,433.08
300 Purchased Professional and Technical Services				
329 Professional Educational Services – Other				11,362.50
330 Other Professional Services				221,574.90
340 Technical Services				4,806.00
Total Purchased Professional and Technical Services				\$237,743.40
400 Purchased Property Services				
430 Repairs and Maintenance Services				2,620.30
440 Rentals				27,600.42
Total Purchased Property Services				\$30,220.72
500 Other Purchased Services				
530 Communications				8,284.00
550 Printing and Binding				1,672.21
580 Travel				156.60
Total Other Purchased Services				\$10,112.81
600 Supplies				
610 General Supplies				5,694.80
Total Supplies				\$5,694.80
800 Other Objects				
810 Dues and Fees				163.00
Total Other Objects				\$163.00
Total 2500 Support Services – Business				\$1,003,198.19

General Fund (10)

2510 Fiscal Services

	<u>Elementary</u>	<u>Secondary</u>	<u>Federal</u>	<u>Total</u>
100 Personnel Services – Salaries				
100 Personnel Services – Salaries				384,707.21
Total Personnel Services – Salaries				\$384,707.21
200 Personnel Services – Employee Benefits				
210 Group Insurance – Contracted Provider				169,933.53
220 Social Security Contributions				29,027.48
230 PSERS Retirement Contributions				109,053.18
250 Unemployment Compensation				6,281.00
270 Group Insurance – Self-Insurance				(2,217.53)
280 Other Post-Employment Benefits (OPEB)				3,250.00
Total Personnel Services – Employee Benefits				\$315,327.66
300 Purchased Professional and Technical Services				
329 Professional Educational Services – Other				11,362.50
330 Other Professional Services				221,574.90
340 Technical Services				4,806.00
Total Purchased Professional and Technical Services				\$237,743.40
400 Purchased Property Services				
430 Repairs and Maintenance Services				1,962.76
440 Rentals				24,952.48
Total Purchased Property Services				\$26,915.24
500 Other Purchased Services				
530 Communications				357.92
580 Travel				156.60
Total Other Purchased Services				\$514.52
600 Supplies				
610 General Supplies				3,121.43
Total Supplies				\$3,121.43
800 Other Objects				
810 Dues and Fees				25.00
Total Other Objects				\$25.00
Total 2510 Fiscal Services				\$988,354.46

General Fund (10)

	<u>Elementary</u>	<u>Secondary</u>	<u>Federal</u>	<u>Total</u>
2511 Supervision of Fiscal Services - Head of Component				
100 Personnel Services – Salaries				
100 Personnel Services – Salaries				153,977.20
Total Personnel Services – Salaries				\$153,977.20
200 Personnel Services – Employee Benefits				
210 Group Insurance – Contracted Provider				71,026.05
220 Social Security Contributions				11,636.78
230 PSERS Retirement Contributions				39,765.29
250 Unemployment Compensation				6,281.00
270 Group Insurance – Self-Insurance				(2,182.64)
280 Other Post-Employment Benefits (OPEB)				3,250.00
Total Personnel Services – Employee Benefits				\$129,776.48
300 Purchased Professional and Technical Services				
329 Professional Educational Services – Other				11,362.50
330 Other Professional Services				181,517.90
Total Purchased Professional and Technical Services				\$192,880.40
400 Purchased Property Services				
430 Repairs and Maintenance Services				919.70
440 Rentals				621.60
Total Purchased Property Services				\$1,541.30
500 Other Purchased Services				
530 Communications				303.52
580 Travel				156.60
Total Other Purchased Services				\$460.12
600 Supplies				
610 General Supplies				22.07
Total Supplies				\$22.07
800 Other Objects				
810 Dues and Fees				25.00
Total Other Objects				\$25.00
Total 2511 Supervision of Fiscal Services - Head of Component				\$478,682.57

General Fund (10)

	<u>Elementary</u>	<u>Secondary</u>	<u>Federal</u>	<u>Total</u>
2513 Receiving and Disbursing Funds Services				
100 Personnel Services – Salaries				
100 Personnel Services – Salaries				36,240.96
Total Personnel Services – Salaries				\$36,240.96
200 Personnel Services – Employee Benefits				
210 Group Insurance – Contracted Provider				22,330.56
220 Social Security Contributions				2,721.17
230 PSERS Retirement Contributions				10,883.03
Total Personnel Services – Employee Benefits				\$35,934.76
400 Purchased Property Services				
430 Repairs and Maintenance Services				433.34
Total Purchased Property Services				\$433.34
Total 2513 Receiving and Disbursing Funds Services				\$72,609.06

General Fund (10)

2514 Payroll Services

	<u>Elementary</u>	<u>Secondary</u>	<u>Federal</u>	<u>Total</u>
100 Personnel Services – Salaries				
100 Personnel Services – Salaries				116,478.39
Total Personnel Services – Salaries				\$116,478.39
200 Personnel Services – Employee Benefits				
210 Group Insurance – Contracted Provider				31,915.80
220 Social Security Contributions				8,801.05
230 PSERS Retirement Contributions				34,978.36
Total Personnel Services – Employee Benefits				\$75,695.21
300 Purchased Professional and Technical Services				
330 Other Professional Services				3,557.00
340 Technical Services				4,806.00
Total Purchased Professional and Technical Services				\$8,363.00
400 Purchased Property Services				
430 Repairs and Maintenance Services				469.72
440 Rentals				16,380.04
Total Purchased Property Services				\$16,849.76
500 Other Purchased Services				
530 Communications				54.40
Total Other Purchased Services				\$54.40
600 Supplies				
610 General Supplies				3,024.02
Total Supplies				\$3,024.02
Total 2514 Payroll Services				\$220,464.78

General Fund (10)

2515 Financial Accounting Services	<u>Elementary</u>	<u>Secondary</u>	<u>Federal</u>	<u>Total</u>
100 <u>Personnel Services – Salaries</u>				
100 Personnel Services – Salaries				78,010.66
Total Personnel Services – Salaries				\$78,010.66
200 <u>Personnel Services – Employee Benefits</u>				
210 Group Insurance – Contracted Provider				44,661.12
220 Social Security Contributions				5,868.48
230 PSERS Retirement Contributions				23,426.50
270 Group Insurance – Self-Insurance				(34.89)
Total Personnel Services – Employee Benefits				\$73,921.21
400 <u>Purchased Property Services</u>				
430 Repairs and Maintenance Services				140.00
440 Rentals				7,950.84
Total Purchased Property Services				\$8,090.84
600 <u>Supplies</u>				
610 General Supplies				75.34
Total Supplies				\$75.34
Total 2515 Financial Accounting Services				\$160,098.05

General Fund (10)

2516 Internal Auditing Services

Elementary

Secondary

Federal

Total

300 Purchased Professional and Technical Services

330 Other Professional Services

36,500.00

Total Purchased Professional and Technical Services

\$36,500.00

Total 2516 Internal Auditing Services

\$36,500.00

LEA : 129546103 Pottsville Area SD

Printed 11/13/2017 11:30:46 AM

Page - 36 of 57

General Fund (10)**2520 Purchasing Services****200 Personnel Services – Employee Benefits**

250 Unemployment Compensation

260 Workers' Compensation

280 Other Post-Employment Benefits (OPEB)

Total Personnel Services – Employee Benefits**400 Purchased Property Services**

430 Repairs and Maintenance Services

440 Rentals

Total Purchased Property Services**500 Other Purchased Services**

530 Communications

550 Printing and Binding

Total Other Purchased Services**600 Supplies**

610 General Supplies

Total Supplies**800 Other Objects**

810 Dues and Fees

Total Other Objects**Total 2520 Purchasing Services**ElementarySecondaryFederalTotal

315.99

2,475.09

2,500.00

\$5,291.08

657.54

2,647.94

\$3,305.48

7,926.08

1,672.21

\$9,598.29

2,573.37

\$2,573.37

138.00

\$138.00**\$20,906.22**

General Fund (10)

	<u>Elementary</u>	<u>Secondary</u>	<u>Federal</u>	<u>Total</u>
2530 Warehousing and Distributing Services				
100 Personnel Services – Salaries				
100 Personnel Services – Salaries				10,123.17
Total Personnel Services – Salaries				\$10,123.17
200 Personnel Services – Employee Benefits				
220 Social Security Contributions				774.42
230 PSERS Retirement Contributions				3,039.92
Total Personnel Services – Employee Benefits				\$3,814.34
Total 2530 Warehousing and Distributing Services				\$13,937.51

General Fund (10)

2600 Operation and Maintenance of Plant Services

	<u>Elementary</u>	<u>Secondary</u>	<u>Federal</u>	<u>Total</u>
100 Personnel Services – Salaries				
100 Personnel Services – Salaries				1,074,185.58
Total Personnel Services – Salaries				\$1,074,185.58
200 Personnel Services – Employee Benefits				
210 Group Insurance – Contracted Provider				498,508.02
220 Social Security Contributions				79,321.63
230 PSERS Retirement Contributions				307,960.71
250 Unemployment Compensation				3,582.56
260 Workers' Compensation				5,559.03
270 Group Insurance – Self-Insurance				(1,091.45)
280 Other Post-Employment Benefits (OPEB)				1,418.57
Total Personnel Services – Employee Benefits				\$895,259.07
300 Purchased Professional and Technical Services				
324 Professional Educational Services – Employee Training and Development Services				790.00
330 Other Professional Services				65,068.55
340 Technical Services				1,000.00
350 Security / Safety Services				5,540.38
Total Purchased Professional and Technical Services				\$72,398.93
400 Purchased Property Services				
410 Cleaning Services				23,630.07
420 Utility Services				393,650.77
430 Repairs and Maintenance Services				334,311.85
440 Rentals				43,104.58
450 Construction Services				43,447.92
460 Extermination Services				9,103.12
Total Purchased Property Services				\$847,248.31
500 Other Purchased Services				
521 Fire Insurance				152.90
522 Automotive Liability Insurance				37,474.00
523 General Property and Liability Insurance				121,894.00
530 Communications				47,394.22
549 Other Advertising/Public Relations				442.72
Total Other Purchased Services				\$207,357.84
600 Supplies				
610 General Supplies	112,687.61	132,596.93		245,284.54
620 Energy				216,413.50
640 Books and Periodicals				298.99
Total Supplies	\$112,687.61	\$132,596.93		\$461,997.03
700 Property				
752 Capital Equipment – Original and Additional				7,453.62
758 Capitalized Technology Software - Original				3,009.50
Total Property				\$10,463.12

General Fund (10)

2600 Operation and Maintenance of Plant Services

800 Other Objects

810 Dues and Fees

Total Other Objects

Total 2600 Operation and Maintenance of Plant Services

	<u>Elementary</u>	<u>Secondary</u>	<u>Federal</u>	<u>Total</u>
				5,029.75
				\$5,029.75
	\$112,687.61	\$132,596.93		\$3,573,939.63

General Fund (10)

2610 Supervision of Operation and Maintenance of Plant Services

	<u>Elementary</u>	<u>Secondary</u>	<u>Federal</u>	<u>Total</u>
100 <u>Personnel Services – Salaries</u>				
100 Personnel Services – Salaries				169,593.39
Total Personnel Services – Salaries				\$169,593.39
200 <u>Personnel Services – Employee Benefits</u>				
210 Group Insurance – Contracted Provider				62,938.36
220 Social Security Contributions				10,690.08
230 PSERS Retirement Contributions				42,901.79
270 Group Insurance – Self-Insurance				(1,091.45)
280 Other Post-Employment Benefits (OPEB)				1,418.57
Total Personnel Services – Employee Benefits				\$116,857.35
300 <u>Purchased Professional and Technical Services</u>				
324 Professional Educational Services – Employee Training and Development Services				250.00
Total Purchased Professional and Technical Services				\$250.00
400 <u>Purchased Property Services</u>				
430 Repairs and Maintenance Services				33.74
Total Purchased Property Services				\$33.74
600 <u>Supplies</u>				
610 General Supplies		54.36		54.36
Total Supplies		\$54.36		\$54.36
Total 2610 Supervision of Operation and Maintenance of Plant Services		\$54.36		\$286,788.84

General Fund (10)

2611 Supervision of Operation and Maintenance of Plant Services – Head of Component

	<u>Elementary</u>	<u>Secondary</u>	<u>Federal</u>	<u>Total</u>
100 Personnel Services – Salaries				
100 Personnel Services – Salaries				54,953.95
Total Personnel Services – Salaries				\$54,953.95
200 Personnel Services – Employee Benefits				
210 Group Insurance – Contracted Provider				7,337.56
220 Social Security Contributions				2,151.25
230 PSERS Retirement Contributions				8,475.62
270 Group Insurance – Self-Insurance				(1,091.45)
280 Other Post-Employment Benefits (OPEB)				1,418.57
Total Personnel Services – Employee Benefits				\$18,291.55
Total 2611 Supervision of Operation and Maintenance of Plant Services – Head of Component				\$73,245.50

General Fund (10)

2619 Supervision of Operation and Maintenance of Plant Services – All Other Supervision

	<u>Elementary</u>	<u>Secondary</u>	<u>Federal</u>	<u>Total</u>
100 Personnel Services – Salaries				
100 Personnel Services – Salaries				114,639.44
Total Personnel Services – Salaries				\$114,639.44
200 Personnel Services – Employee Benefits				
210 Group Insurance – Contracted Provider				55,600.80
220 Social Security Contributions				8,538.83
230 PSERS Retirement Contributions				34,426.17
Total Personnel Services – Employee Benefits				\$98,565.80
300 Purchased Professional and Technical Services				
324 Professional Educational Services – Employee Training and Development Services				250.00
Total Purchased Professional and Technical Services				\$250.00
400 Purchased Property Services				
430 Repairs and Maintenance Services				33.74
Total Purchased Property Services				\$33.74
600 Supplies				
610 General Supplies		54.36		54.36
Total Supplies		\$54.36		\$54.36
Total 2619 Supervision of Operation and Maintenance of Plant Services – All Other Supervision		\$54.36		\$213,543.34

LEA : 129546103 Pottsville Area SD

Printed 11/13/2017 11:30:46 AM

Page - 43 of 57

General Fund (10)

	<u>Elementary</u>	<u>Secondary</u>	<u>Federal</u>	<u>Total</u>
2620 Operation of Buildings Services				
100 Personnel Services – Salaries				
100 Personnel Services – Salaries				716,179.82
Total Personnel Services – Salaries				\$716,179.82
200 Personnel Services – Employee Benefits				
210 Group Insurance – Contracted Provider				361,630.99
220 Social Security Contributions				54,334.98
230 PSERS Retirement Contributions				215,405.10
250 Unemployment Compensation				3,582.56
260 Workers' Compensation				5,559.03
Total Personnel Services – Employee Benefits				\$640,512.66
300 Purchased Professional and Technical Services				
324 Professional Educational Services – Employee Training and Development Services				245.00
330 Other Professional Services				5,600.00
340 Technical Services				1,000.00
Total Purchased Professional and Technical Services				\$6,845.00
400 Purchased Property Services				
410 Cleaning Services				23,630.07
420 Utility Services				393,650.77
430 Repairs and Maintenance Services				312,211.03
440 Rentals				39,598.91
450 Construction Services				43,447.92
460 Extermination Services				9,103.12
Total Purchased Property Services				\$821,641.82
500 Other Purchased Services				
521 Fire Insurance				152.90
522 Automotive Liability Insurance				37,474.00
523 General Property and Liability Insurance				121,894.00
530 Communications				37,854.22
549 Other Advertising/Public Relations				442.72
Total Other Purchased Services				\$197,817.84
600 Supplies				
610 General Supplies	87,446.78	105,984.21		193,430.99
620 Energy				213,963.50
640 Books and Periodicals				39.99
Total Supplies	\$87,446.78	\$105,984.21		\$407,434.48
700 Property				
752 Capital Equipment – Original and Additional				7,453.62
Total Property				\$7,453.62
800 Other Objects				
810 Dues and Fees				4,879.75
Total Other Objects				\$4,879.75
Total 2620 Operation of Buildings Services	\$87,446.78	\$105,984.21		\$2,802,764.99

General Fund (10)

	Elementary	Secondary	Federal	Total
2630 Care and Upkeep of Grounds Services				
100 Personnel Services – Salaries				
100 Personnel Services – Salaries				131,967.72
Total Personnel Services – Salaries				\$131,967.72
200 Personnel Services – Employee Benefits				
210 Group Insurance – Contracted Provider				70,574.36
220 Social Security Contributions				9,990.97
230 PSERS Retirement Contributions				39,630.16
Total Personnel Services – Employee Benefits				\$120,195.49
300 Purchased Professional and Technical Services				
324 Professional Educational Services – Employee Training and Development Services				295.00
Total Purchased Professional and Technical Services				\$295.00
400 Purchased Property Services				
430 Repairs and Maintenance Services				7,538.27
440 Rentals				3,505.67
Total Purchased Property Services				\$11,043.94
600 Supplies				
610 General Supplies	24,476.03	25,793.57		50,269.60
Total Supplies	\$24,476.03	\$25,793.57		\$50,269.60
800 Other Objects				
810 Dues and Fees				150.00
Total Other Objects				\$150.00
Total 2630 Care and Upkeep of Grounds Services	\$24,476.03	\$25,793.57		\$313,921.75

General Fund (10)

2650 Vehicle Operation and Maintenance Services (Other Than Student Transportation Vehicles)	<u>Elementary</u>	<u>Secondary</u>	<u>Federal</u>	<u>Total</u>
100 Personnel Services – Salaries				
100 Personnel Services – Salaries				9,129.50
Total Personnel Services – Salaries				\$9,129.50
200 Personnel Services – Employee Benefits				
210 Group Insurance – Contracted Provider				3,343.31
220 Social Security Contributions				687.83
230 PSERS Retirement Contributions				2,741.58
Total Personnel Services – Employee Benefits				\$6,772.72
400 Purchased Property Services				
430 Repairs and Maintenance Services				8,460.81
Total Purchased Property Services				\$8,460.81
600 Supplies				
610 General Supplies	272.25	272.25		544.50
620 Energy				2,450.00
Total Supplies	\$272.25	\$272.25		\$2,994.50
Total 2650 Vehicle Operation and Maintenance Services (Other Than Student Transportation Vehicles)	\$272.25	\$272.25		\$27,357.53

General Fund (10)

2660 Safety and Security Services

100 Personnel Services – Salaries

100 Personnel Services – Salaries

47,315.15

Total Personnel Services – Salaries

\$47,315.15

200 Personnel Services – Employee Benefits

210 Group Insurance – Contracted Provider

21.00

220 Social Security Contributions

3,617.77

230 PSERS Retirement Contributions

7,282.08

Total Personnel Services – Employee Benefits

\$10,920.85

300 Purchased Professional and Technical Services

330 Other Professional Services

59,468.55

350 Security / Safety Services

5,540.38

Total Purchased Professional and Technical Services

\$65,008.93

400 Purchased Property Services

430 Repairs and Maintenance Services

6,068.00

Total Purchased Property Services

\$6,068.00

500 Other Purchased Services

530 Communications

9,540.00

Total Other Purchased Services

\$9,540.00

600 Supplies

610 General Supplies

492.55

492.54

985.09

640 Books and Periodicals

259.00

Total Supplies

\$492.55

\$492.54

\$1,244.09

700 Property

758 Capitalized Technology Software - Original

3,009.50

Total Property

\$3,009.50

Total 2660 Safety and Security Services

\$492.55

\$492.54

\$143,106.52

General Fund (10)

	<u>Elementary</u>	<u>Secondary</u>	<u>Federal</u>	<u>Total</u>
2700 Student Transportation Services				
100 Personnel Services – Salaries				
100 Personnel Services – Salaries				661,993.58
Total Personnel Services – Salaries				\$661,993.58
200 Personnel Services – Employee Benefits				
210 Group Insurance – Contracted Provider				127,879.24
220 Social Security Contributions				48,477.21
230 PSERS Retirement Contributions				189,455.38
250 Unemployment Compensation				213.41
260 Workers' Compensation				4,448.18
270 Group Insurance – Self-Insurance				11,829.74
280 Other Post-Employment Benefits (OPEB)				1,418.57
Total Personnel Services – Employee Benefits				\$383,721.73
300 Purchased Professional and Technical Services				
324 Professional Educational Services – Employee Training and Development Services				300.00
330 Other Professional Services				3,735.00
Total Purchased Professional and Technical Services				\$4,035.00
400 Purchased Property Services				
430 Repairs and Maintenance Services				24,006.82
440 Rentals				9,144.00
Total Purchased Property Services				\$33,150.82
500 Other Purchased Services				
511 Student Transportation Services from Another LEA Within the State				1,101.60
513 Contracted Carriers				6,011.89
516 Student Transportation Services From the IU				69,869.40
530 Communications				2,113.67
550 Printing and Binding				1,121.80
Total Other Purchased Services				\$80,218.36
600 Supplies				
610 General Supplies				50,399.78
620 Energy				67,436.87
Total Supplies				\$117,836.65
Total 2700 Student Transportation Services				\$1,280,956.14

LEA : 129546103 Pottsville Area SD

Printed 11/13/2017 11:30:46 AM

Page - 48 of 57

General Fund (10)**2710 Supervision of Student Transportation Services****100 Personnel Services – Salaries**

100 Personnel Services – Salaries

99,489.60

Total Personnel Services – Salaries**\$99,489.60****200 Personnel Services – Employee Benefits**

210 Group Insurance – Contracted Provider

27,965.70

220 Social Security Contributions

5,515.98

230 PSERS Retirement Contributions

21,849.68

270 Group Insurance – Self-Insurance

(1,011.05)

280 Other Post-Employment Benefits (OPEB)

1,418.57

Total Personnel Services – Employee Benefits**\$55,738.88****600 Supplies**

610 General Supplies

503.23

Total Supplies**\$503.23****Total 2710 Supervision of Student Transportation Services****\$155,731.71**

General Fund (10)

2711 Supervision of Student Transportation Services – Head of Component

	<u>Elementary</u>	<u>Secondary</u>	<u>Federal</u>	<u>Total</u>
100 Personnel Services – Salaries				
100 Personnel Services – Salaries				99,489.60
Total Personnel Services – Salaries				\$99,489.60
200 Personnel Services – Employee Benefits				
210 Group Insurance – Contracted Provider				27,965.70
220 Social Security Contributions				5,515.98
230 PSERS Retirement Contributions				21,849.68
270 Group Insurance – Self-Insurance				(1,011.05)
280 Other Post-Employment Benefits (OPEB)				1,418.57
Total Personnel Services – Employee Benefits				\$55,738.88
600 Supplies				
610 General Supplies				503.23
Total Supplies				\$503.23
Total 2711 Supervision of Student Transportation Services – Head of Component				\$155,731.71

LEA : 129546103 Pottsville Area SD

Printed 11/13/2017 11:30:46 AM

Page - 50 of 57

General Fund (10)**2720 Vehicle Operation Services**

	<u>Elementary</u>	<u>Secondary</u>	<u>Federal</u>	<u>Total</u>
100 Personnel Services – Salaries				
100 Personnel Services – Salaries				452,892.76
Total Personnel Services – Salaries				\$452,892.76
200 Personnel Services – Employee Benefits				
210 Group Insurance – Contracted Provider				62,385.10
220 Social Security Contributions				34,645.76
230 PSERS Retirement Contributions				134,979.29
250 Unemployment Compensation				161.18
260 Workers' Compensation				4,039.06
270 Group Insurance – Self-Insurance				11,425.28
Total Personnel Services – Employee Benefits				\$247,635.67
300 Purchased Professional and Technical Services				
324 Professional Educational Services – Employee Training and Development Services				300.00
330 Other Professional Services				3,735.00
Total Purchased Professional and Technical Services				\$4,035.00
400 Purchased Property Services				
430 Repairs and Maintenance Services				3,969.93
440 Rentals				9,144.00
Total Purchased Property Services				\$13,113.93
500 Other Purchased Services				
511 Student Transportation Services from Another LEA Within the State				1,101.60
513 Contracted Carriers				6,011.89
516 Student Transportation Services From the IU				69,869.40
530 Communications				2,113.67
550 Printing and Binding				1,121.80
Total Other Purchased Services				\$80,218.36
600 Supplies				
610 General Supplies				45,978.84
620 Energy				67,436.87
Total Supplies				\$113,415.71
Total 2720 Vehicle Operation Services				\$911,311.43

General Fund (10)

2740 Vehicle Servicing and Maintenance Services

	<u>Elementary</u>	<u>Secondary</u>	<u>Federal</u>	<u>Total</u>
100 Personnel Services – Salaries				
100 Personnel Services – Salaries				57,419.04
Total Personnel Services – Salaries				\$57,419.04
200 Personnel Services – Employee Benefits				
210 Group Insurance – Contracted Provider				26,417.78
220 Social Security Contributions				4,332.01
230 PSERS Retirement Contributions				17,242.92
Total Personnel Services – Employee Benefits				\$47,992.71
400 Purchased Property Services				
430 Repairs and Maintenance Services				19,657.98
Total Purchased Property Services				\$19,657.98
600 Supplies				
610 General Supplies				2,574.34
Total Supplies				\$2,574.34
Total 2740 Vehicle Servicing and Maintenance Services				\$127,644.07

LEA : 129546103 Pottsville Area SD

Printed 11/13/2017 11:30:46 AM

General Fund (10)

2750 Nonpublic Transportation

	<u>Elementary</u>	<u>Secondary</u>	<u>Federal</u>	<u>Total</u>
100 Personnel Services – Salaries				
100 Personnel Services – Salaries				52,192.18
Total Personnel Services – Salaries				\$52,192.18
200 Personnel Services – Employee Benefits				
210 Group Insurance – Contracted Provider				11,110.66
220 Social Security Contributions				3,983.46
230 PSERS Retirement Contributions				15,383.49
250 Unemployment Compensation				52.23
260 Workers' Compensation				409.12
270 Group Insurance – Self-Insurance				1,415.51
Total Personnel Services – Employee Benefits				\$32,354.47
400 Purchased Property Services				
430 Repairs and Maintenance Services				378.91
Total Purchased Property Services				\$378.91
600 Supplies				
610 General Supplies				1,343.37
Total Supplies				\$1,343.37
Total 2750 Nonpublic Transportation				\$86,268.93

General Fund (10)

	<u>Elementary</u>	<u>Secondary</u>	<u>Federal</u>	<u>Total</u>
2800 Support Services – Central				
100 Personnel Services – Salaries				
100 Personnel Services – Salaries			4,872.00	216,468.83
Total Personnel Services – Salaries			\$4,872.00	\$216,468.83
200 Personnel Services – Employee Benefits				
210 Group Insurance – Contracted Provider				89,825.88
220 Social Security Contributions			366.65	16,284.08
230 PSERS Retirement Contributions			1,463.06	64,539.96
250 Unemployment Compensation				160.05
Total Personnel Services – Employee Benefits			\$1,829.71	\$170,809.97
300 Purchased Professional and Technical Services				
324 Professional Educational Services – Employee Training and Development Services				1,595.36
330 Other Professional Services			5,500.00	5,500.00
340 Technical Services				1,814.00
Total Purchased Professional and Technical Services			\$5,500.00	\$8,909.36
400 Purchased Property Services				
430 Repairs and Maintenance Services				28,920.15
440 Rentals				25,018.96
Total Purchased Property Services				\$53,939.11
500 Other Purchased Services				
530 Communications				15,833.35
580 Travel				667.22
Total Other Purchased Services				\$16,500.57
600 Supplies				
610 General Supplies				24,743.80
650 Supplies & Fees – Technology Related				5,222.32
Total Supplies				\$29,966.12
700 Property				
758 Capitalized Technology Software - Original				10,520.59
Total Property				\$10,520.59
800 Other Objects				
810 Dues and Fees				105.00
Total Other Objects				\$105.00
Total 2800 Support Services – Central			\$12,201.71	\$507,219.55

LEA : 129546103 Pottsville Area SD

Printed 11/13/2017 11:30:46 AM

Page - 54 of 57

General Fund (10)**2810 Planning, Research, Development and Evaluation Services**

	<u>Elementary</u>	<u>Secondary</u>	<u>Federal</u>	<u>Total</u>
100 Personnel Services – Salaries				
100 Personnel Services – Salaries				211,596.83
Total Personnel Services – Salaries				\$211,596.83
200 Personnel Services – Employee Benefits				
210 Group Insurance – Contracted Provider				89,825.88
220 Social Security Contributions				15,917.43
230 PSERS Retirement Contributions				63,076.90
250 Unemployment Compensation				160.05
Total Personnel Services – Employee Benefits				\$168,980.26
300 Purchased Professional and Technical Services				
340 Technical Services				1,814.00
Total Purchased Professional and Technical Services				\$1,814.00
400 Purchased Property Services				
430 Repairs and Maintenance Services				28,920.15
440 Rentals				25,018.96
Total Purchased Property Services				\$53,939.11
500 Other Purchased Services				
530 Communications				15,833.35
Total Other Purchased Services				\$15,833.35
600 Supplies				
610 General Supplies				24,743.80
650 Supplies & Fees – Technology Related				5,222.32
Total Supplies				\$29,966.12
700 Property				
758 Capitalized Technology Software - Original				10,520.59
Total Property				\$10,520.59
Total 2810 Planning, Research, Development and Evaluation Services				\$492,650.26

General Fund (10)

2830 Staff Services

<u>Elementary</u>	<u>Secondary</u>	<u>Federal</u>	<u>Total</u>
-------------------	------------------	----------------	--------------

300 Purchased Professional and Technical Services

324 Professional Educational Services – Employee Training and Development Services			1,595.36
--	--	--	----------

Total Purchased Professional and Technical Services			\$1,595.36
--	--	--	-------------------

500 Other Purchased Services

580 Travel			667.22
------------	--	--	--------

Total Other Purchased Services			\$667.22
---------------------------------------	--	--	-----------------

800 Other Objects

810 Dues and Fees			105.00
-------------------	--	--	--------

Total Other Objects			\$105.00
----------------------------	--	--	-----------------

Total 2830 Staff Services			\$2,367.58
----------------------------------	--	--	-------------------

General Fund (10)

2834 Staff Development Services – Non-Instructional, Certified Staff Only

Elementary	Secondary	Federal	Total
-------------------	------------------	----------------	--------------

300 Purchased Professional and Technical Services

324 Professional Educational Services – Employee Training and Development Services

1,595.36

Total Purchased Professional and Technical Services

\$1,595.36

500 Other Purchased Services

580 Travel

667.22

Total Other Purchased Services

\$667.22

800 Other Objects

810 Dues and Fees

105.00

Total Other Objects

\$105.00

Total 2834 Staff Development Services – Non-Instructional, Certified Staff Only

\$2,367.58

General Fund (10)

2850 State and Federal Agency Liaison Services	<u>Elementary</u>	<u>Secondary</u>	<u>Federal</u>	<u>Total</u>
100 <u>Personnel Services – Salaries</u>				
100 Personnel Services – Salaries			4,872.00	4,872.00
Total Personnel Services – Salaries			\$4,872.00	\$4,872.00
200 <u>Personnel Services – Employee Benefits</u>				
220 Social Security Contributions			366.65	366.65
230 PSERS Retirement Contributions			1,463.06	1,463.06
Total Personnel Services – Employee Benefits			\$1,829.71	\$1,829.71
300 <u>Purchased Professional and Technical Services</u>				
330 Other Professional Services			5,500.00	5,500.00
Total Purchased Professional and Technical Services			\$5,500.00	\$5,500.00
Total 2850 State and Federal Agency Liaison Services			\$12,201.71	\$12,201.71

LEA : 129548103 Pottsville Area SD

Printed 11/13/2017 11:30:48 AM

Page - 1 of 4

General Fund (10)**3000 Operation of Non-Instructional Services**

	<u>Total</u>
100 Personnel Services – Salaries	
100 Personnel Services – Salaries	662,493.60
Total Personnel Services – Salaries	\$662,493.60
200 Personnel Services – Employee Benefits	
210 Group Insurance – Contracted Provider	33,450.79
220 Social Security Contributions	50,272.06
230 PSERS Retirement Contributions	182,361.87
250 Unemployment Compensation	2,679.30
260 Workers' Compensation	3,785.96
270 Group Insurance – Self-Insurance	(2,421.68)
280 Other Post-Employment Benefits (OPEB)	6,133.41
Total Personnel Services – Employee Benefits	\$276,261.71
300 Purchased Professional and Technical Services	
330 Other Professional Services	3,300.00
Total Purchased Professional and Technical Services	\$3,300.00
400 Purchased Property Services	
410 Cleaning Services	1,032.00
430 Repairs and Maintenance Services	163.75
440 Rentals	6,440.53
Total Purchased Property Services	\$7,636.28
500 Other Purchased Services	
520 Insurance – General	135.00
530 Communications	772.14
549 Other Advertising/Public Relations	(332.60)
Total Other Purchased Services	\$574.54
600 Supplies	
610 General Supplies	353,885.08
630 Food	1,084.36
640 Books and Periodicals	3,280.24
Total Supplies	\$358,249.68
800 Other Objects	
810 Dues and Fees	2,680.00
860 Grants To Municipal and Community Service Organizations	1,500.00
890 Miscellaneous Expenditures	1,363.00
Total Other Objects	\$5,543.00
Total 3000 Operation of Non-Instructional Services	\$1,314,058.81

General Fund (10)**3200 Student Activities**

	<u>Elementary</u>	<u>Secondary</u>	<u>Federal</u>	<u>Total</u>
100 <u>Personnel Services – Salaries</u>				
100 Personnel Services – Salaries				612,484.56
Total Personnel Services – Salaries				\$612,484.56
200 <u>Personnel Services – Employee Benefits</u>				
210 Group Insurance – Contracted Provider				33,450.79
220 Social Security Contributions				46,486.04
230 PSERS Retirement Contributions				170,939.94
250 Unemployment Compensation				2,652.43
260 Workers' Compensation				2,472.54
270 Group Insurance – Self-Insurance				(2,421.68)
280 Other Post-Employment Benefits (OPEB)				6,133.41
Total Personnel Services – Employee Benefits				\$259,713.47
300 <u>Purchased Professional and Technical Services</u>				
330 Other Professional Services				3,300.00
Total Purchased Professional and Technical Services				\$3,300.00
400 <u>Purchased Property Services</u>				
410 Cleaning Services				1,032.00
430 Repairs and Maintenance Services				163.75
440 Rentals				6,440.53
Total Purchased Property Services				\$7,636.28
500 <u>Other Purchased Services</u>				
520 Insurance – General				135.00
530 Communications				772.14
Total Other Purchased Services				\$907.14
600 <u>Supplies</u>				
610 General Supplies				349,909.69
630 Food				435.00
640 Books and Periodicals				152.50
Total Supplies				\$350,497.19
800 <u>Other Objects</u>				
810 Dues and Fees				2,680.00
890 Miscellaneous Expenditures				1,363.00
Total Other Objects				\$4,043.00
Total 3200 Student Activities				\$1,238,581.64

General Fund (10)

3300 Community Services

	<u>Elementary</u>	<u>Secondary</u>	<u>Federal</u>	<u>Total</u>
100 Personnel Services – Salaries				
100 Personnel Services – Salaries			1,136.00	50,009.04
Total Personnel Services – Salaries			\$1,136.00	\$50,009.04
200 Personnel Services – Employee Benefits				
220 Social Security Contributions			85.07	3,786.02
230 PSERS Retirement Contributions			341.14	11,421.93
250 Unemployment Compensation				26.87
260 Workers' Compensation				1,313.42
Total Personnel Services – Employee Benefits			\$426.21	\$16,548.24
500 Other Purchased Services				
549 Other Advertising/Public Relations				(432.60)
Total Other Purchased Services				(\$432.60)
600 Supplies				
610 General Supplies			3,363.41	3,975.39
630 Food			649.36	649.36
640 Books and Periodicals			3,127.74	3,127.74
Total Supplies			\$7,140.51	\$7,752.49
800 Other Objects				
860 Grants To Municipal and Community Service Organizations				1,500.00
Total Other Objects				\$1,500.00
Total 3300 Community Services			\$8,702.72	\$75,377.17

General Fund (10)

3400 Scholarships and Awards

Elementary

Secondary

Federal

Total

500 Other Purchased Services

549 Other Advertising/Public Relations

100.00

Total Other Purchased Services

\$100.00

Total 3400 Scholarships and Awards

\$100.00

General Fund (10)

5000 Other Expenditures and Financing Uses

800 Other Objects

830 Interest

248,272.61

Total Other Objects

\$248,272.61

900 Other Uses of Funds

910 Redemption of Principal

1,498,511.55

930 Fund Transfers

65,000.00

939 Other Fund Transfers

163,771.25

Total Other Uses of Funds

\$1,727,282.80

Total 5000 Other Expenditures and Financing Uses

\$1,975,555.41

General Fund (10)

	<u>Elementary</u>	<u>Secondary</u>	<u>Federal</u>	<u>Total</u>
5100 Debt Service / Other Expenditures and Financing Uses				
800 Other Objects				
830 Interest				248,272.61
Total Other Objects				\$248,272.61
900 Other Uses of Funds				
910 Redemption of Principal				1,498,511.55
Total Other Uses of Funds				\$1,498,511.55
Total 5100 Debt Service / Other Expenditures and Financing Uses				\$1,746,784.16

General Fund (10)

5110 Debt Service

Elementary

Secondary

Federal

Total

800 Other Objects

830 Interest

248,272.61

Total Other Objects

\$248,272.61

900 Other Uses of Funds

910 Redemption of Principal

1,498,511.55

Total Other Uses of Funds

\$1,498,511.55

Total 5110 Debt Service

\$1,746,784.16

General Fund (10)

5200 Interfund Transfers – Out

Elementary	Secondary	Federal	Total
-------------------	------------------	----------------	--------------

900 Other Uses of Funds

930 Fund Transfers

65,000.00

939 Other Fund Transfers

163,771.25

Total Other Uses of Funds

\$228,771.25

Total 5200 Interfund Transfers – Out

\$228,771.25

LEA : 129546103 Pottsville Area SD

Printed 11/13/2017 11:30:50 AM

General Fund (10)

5230 Capital Projects Fund Transfers

900 Other Uses of Funds

939 Other Fund Transfers

Total Other Uses of Funds

Total 5230 Capital Projects Fund Transfers

Elementary

Secondary

Federal

Total

163,771.25

\$163,771.25

\$163,771.25

General Fund (10)

5250 Enterprise Fund Transfers

Elementary

Secondary

Federal

Total

900 Other Uses of Funds

930 Fund Transfers

65,000.00

Total Other Uses of Funds

\$65,000.00

Total 5250 Enterprise Fund Transfers

\$65,000.00

LEA : 129546103 Pottsville Area SD

Printed 11/13/2017 11:30:49 AM

Capital Reserve Fund - § 1431 (32)

4000 Facilities Acquisition, Construction and Improvement Services

	<u>Total</u>
700 <u>Property</u>	
762 Capitalized Equipment - Replacement	32,936.00
Total Property	\$32,936.00
Total 4000 Facilities Acquisition, Construction and Improvement Services	\$32,936.00

Capital Reserve Fund - § 1431 (32)

4200 Existing Site Improvement Services

Elementary

Secondary

Federal

Total

700 Property

762 Capitalized Equipment - Replacement

32,936.00

Total Property

\$32,936.00

Total 4200 Existing Site Improvement Services

\$32,936.00

LEA : 129546103 Pottsville Area SD

Printed 11/13/2017 11:30:50 AM

Other Capital Projects Fund (39)

4000 Facilities Acquisition, Construction and Improvement Services

Total

700 <u>Property</u>	
762 Capitalized Equipment - Replacement	2,200,634.00
Total Property	\$2,200,634.00
Total 4000 Facilities Acquisition, Construction and Improvement Services	\$2,200,634.00

Other Capital Projects Fund (39)

4200 Existing Site Improvement Services

Elementary

Secondary

Federal

Total

700 Property

762 Capitalized Equipment - Replacement

2,200,634.00

Total Property

\$2,200,634.00

Total 4200 Existing Site Improvement Services

\$2,200,634.00

	<u>General Fund(10)</u>	<u>Public Purpose Trust(27)</u>	<u>Other Compt Approved (28)</u>	<u>Athletic / Activity(29)</u>	<u>Capital Reserve (690, 1850)(31)</u>
1000 Instruction					
1100 Regular Programs - Elementary / Secondary	17,433,315.81				
1200 Special Programs - Elementary / Secondary	7,410,574.44				
1300 Vocational Education	1,306,553.80				
1400 Other Instructional Programs - Elementary / Secondary	577,856.95				
1500 Nonpublic School Programs	16,949.91				
Total Instruction	\$26,745,250.91				
2000 Support Services					
2100 Support Services - Students	1,322,512.94				
2200 Support Services - Instructional Staff	1,284,282.41				
2300 Support Services - Administration	2,538,619.20				
2400 Support Services - Pupil Health	480,408.83				
2500 Support Services - Business	1,003,198.19				
2600 Operation and Maintenance of Plant Services	3,573,939.63				
2700 Student Transportation Services	1,280,956.14				
2800 Support Services - Central	507,219.55				
Total Support Services	\$11,991,136.89				
3000 Operation of Non-Instructional Services					
3200 Student Activities	1,238,581.64				
3300 Community Services	75,377.17				
3400 Scholarships and Awards	100.00				
Total Operation of Non-Instructional Services	\$1,314,058.81				
4000 Facilities Acquisition, Construction and Improvement Services					
4200 Existing Site Improvement Services					
Total Facilities Acquisition, Construction and Improvement Services					
5000 Other Expenditures and Financing Uses					
5100 Debt Service / Other Expenditures and Financing Uses	1,746,784.16				
5200 Interfund Transfers - Out	228,771.25				
Total Other Expenditures and Financing Uses	\$1,975,555.41				
TOTAL ACTUAL EXPENDITURES & OTHER FINANCING USES	\$42,026,002.02				

	<u>Capital Reserve (1431)(32)</u>	<u>Other Capital Projects Fund(39)</u>	<u>Debt Service(40)</u>	<u>Permanent(90)</u>	<u>Total</u>
1000 Instruction					
1100 Regular Programs - Elementary / Secondary					17,433,315.81
1200 Special Programs - Elementary / Secondary					7,410,574.44
1300 Vocational Education					1,306,553.80
1400 Other Instructional Programs - Elementary / Secondary					577,856.95
1500 Nonpublic School Programs					16,949.91
Total Instruction					\$26,745,250.91
2000 Support Services					
2100 Support Services - Students					1,322,512.94
2200 Support Services - Instructional Staff					1,284,282.41
2300 Support Services - Administration					2,538,619.20
2400 Support Services - Pupil Health					480,408.83
2500 Support Services - Business					1,003,198.19
2600 Operation and Maintenance of Plant Services					3,573,939.63
2700 Student Transportation Services					1,280,956.14
2800 Support Services - Central					507,219.55
Total Support Services					\$11,991,136.89
3000 Operation of Non-Instructional Services					
3200 Student Activities					1,238,581.64
3300 Community Services					75,377.17
3400 Scholarships and Awards					100.00
Total Operation of Non-Instructional Services					\$1,314,058.81
4000 Facilities Acquisition, Construction and Improvement Services					
4200 Existing Site Improvement Services	32,936.00	2,200,634.00			2,233,570.00
Total Facilities Acquisition, Construction and Improvement Services	\$32,936.00	\$2,200,634.00			\$2,233,570.00
5000 Other Expenditures and Financing Uses					
5100 Debt Service / Other Expenditures and Financing Uses					1,746,784.16
5200 Interfund Transfers - Out					228,771.25
Total Other Expenditures and Financing Uses					\$1,975,555.41
TOTAL ACTUAL EXPENDITURES & OTHER FINANCING USES	\$32,936.00	\$2,200,634.00			\$44,259,572.02

PSERS Salary Data (Salary Data should relate to the General Fund only)

Amount Description	Amount
Total Salary Base for salaries subject to PSERS withholding	18,203,736.29
Total Federally Funded salaries subject to PSERS withholding	465,630.17
	<hr/>

Title I Expenditure Data

Amount Description	Amount
Expenditures Funded with Current Title I Funds	716,681.35
Expenditures Funded with Carry over Title I Funds	
Total Title I Expenditure Data	<hr/> \$716,681.35 <hr/>

Title I ARRA Amount

Amount Description	Amount
Portion of Total Title I Expenditures funded with ARRA Title I	<hr/>

		Benefits for Staff Relative to Collective Bargaining Agreements		
	OBJECT	COVERED	NOT COVERED	TOTAL
10 General Fund	No Self Insurance data to report			
	211 Medical Insurance	5,254,500.81		5,254,500.81
	212 Dental Insurance	233,614.33		233,614.33
	215 Eye Care Insurance	20,767.82		20,767.82
	216 Prescription Insurance			
	271 Self-Insurance Medical Benefits			
	272 Self-Insurance Dental Benefits			
	275 Self-Insurance Eye Care Benefits			
	276 Self-Insurance Prescription Benefits			
	FUND TOTAL		\$5,508,882.96	
50 Enterprise Fund	No Self Insurance data to report			
	211 Medical Insurance			
	212 Dental Insurance			
	215 Eye Care Insurance			
	216 Prescription Insurance			
	271 Self-Insurance Medical Benefits			
	272 Self-Insurance Dental Benefits			
	275 Self-Insurance Eye Care Benefits			
	276 Self-Insurance Prescription Benefits			
	FUND TOTAL			
60 Internal Service Fund	No Self Insurance data to report			
	211 Medical Insurance			
	212 Dental Insurance			
	215 Eye Care Insurance			
	216 Prescription Insurance			
	271 Self-Insurance Medical Benefits			
	272 Self-Insurance Dental Benefits			
	275 Self-Insurance Eye Care Benefits			
	276 Self-Insurance Prescription Benefits			
	FUND TOTAL			
Total of All Funds		\$5,508,882.96		\$5,508,882.96

LEA : 129546103 Pottsville Area SD

Printed 11/13/2017 11:30:59 AM

Function	Special Education (Prior Year)	Nonspecial Education (Prior Year)	Total (Prior Year)	Special Education (Current Year)	Nonspecial Education (Current Year)	Total (Current Year)
2120 Guidance Services	120,509.62	458,863.54	579,373.16	102,218.86	356,161.68	458,380.54
2140 Psychological Services	72,179.84	274,838.60	347,018.44	71,323.98	248,514.49	319,838.47
2150 Speech Pathology and Audiology Services						
2160 Social Work Services	55,204.26	210,200.84	265,405.10	61,500.29	214,285.78	275,786.07
2260 Instruction and Curriculum Development Services	133,332.17	507,687.87	641,020.04	131,756.72	459,080.56	590,837.28
2350 Legal and Accounting Services	29,331.23	192,499.19	221,830.42	35,720.35	124,460.60	160,180.95
2420 Medical Services	1,412.00	17,584.81	18,996.81	1,835.43	17,157.55	18,992.98
2440 Nursing Services	73,115.91	278,402.89	351,518.80	82,401.30	287,111.27	369,512.57
2700 Student Transportation Services	219,135.06	834,398.90	1,053,533.96	221,967.99	773,404.17	995,372.16
Total	\$704,220.09	\$2,774,476.64	\$3,478,696.73	\$708,724.92	\$2,480,176.10	\$3,188,901.02

(PRINCIPAL AMOUNTS ONLY)

GOVERNMENTAL FUNDS/ ACTIVITIES

	Short-Term Borrowing	General Obligation Bonds/Notes	Authority Building Obligations	Other Long-Term Debt	Other Post- Employment Benefits (OPEB)	Compensated Absences	Net Pension Liability	Total
1. Debt at Beginning of Fiscal Year		6,590,000.00		4,881,594.99	485,947.00	982,668.75	62,330,000.00	75,070,210.74
2. Additional Debt Incurred During Year				17,358.00	504,139.00		11,212,000.00	11,733,497.00
3. Retirements and Repayments		390,000.00		1,108,511.55	411,042.00	172,697.50		2,082,251.05
4. Debt at End of Fiscal Year		6,200,000.00		3,590,441.44	579,044.00	809,971.25	73,542,000.00	84,721,456.69
5. Accreted Interest at End Of Fiscal Year								
6. Total Debt and Accreted Interest		6,200,000.00		3,590,441.44	579,044.00	809,971.25	73,542,000.00	84,721,456.69
7. Current Portion P&I - Due within 1 year		552,440.00		1,050,065.18		75,000.00		1,677,505.18
8. Interest Paid during current fiscal year		158,027.50		90,245.11				248,272.61

(PRINCIPAL AMOUNTS ONLY)

PROPRIETARY FUNDS

1. Debt at Beginning of Fiscal Year
2. Additional Debt Incurred During Year
3. Retirements and Repayments
4. Debt at End of Fiscal Year
5. Accreted Interest at End Of Fiscal Year
6. Total Debt and Accreted Interest
7. Current Portion P&I - Due within 1 year
8. Interest Paid during current fiscal year

Total Principal and Interest Payments Made by Your School - All Funds

Function	Fund		Principal (910)	Principal (920)	Interest (830)	Total (Principal +Interest)	Misc Other Uses (990)
5110	10	General Fund	1,498,511.55		248,272.61	1,746,784.16	
5110	20	Special Revenue Funds					
5110	30	Capital Projects Funds					
5110	40	Debt Service Fund					
5110	90	Permanent Fund					
5120	10	General Fund					
5120	20	Special Revenue Funds					
5120	30	Capital Projects Funds					
5120	40	Debt Service Fund					
Total Debt Payments - Governmental Funds			\$1,498,511.55		\$248,272.61	\$1,746,784.16	

Function	Fund		Principal (910)	Principal (920)	Interest (830)	Total (Principal +Interest)	Misc Other Uses (990)
5110	50	Enterprise Fund					
5110	60	Internal Service Fund					
5120	50	Enterprise Fund					
5120	60	Internal Service Fund					
Total Debt Payments - Proprietary Funds							

Debt Details
Governmental Funds/ Activities

Debt Category	Debt Issue Date (MM/YYYY)	Debt at Beginning of Fiscal Year	Principal Amounts Only			Debt at End of Fiscal Year	Current Portion Due Within One Year (Principal and Interest)	Interest Paid During Fiscal Year
			Additions	Reductions / Repayments				
General Obligation Bonds/Notes – CIB	02/2016	3,070,000.00		125,000.00	2,945,000.00	214,132.50	85,382.50	
General Obligation Bonds/Notes – CIB	09/2012	3,520,000.00		265,000.00	3,255,000.00	338,307.50	72,645.00	
Extended Term Financing Agreements		4,681,594.99	17,358.00	1,108,511.55	3,590,441.44	1,050,065.18	90,245.11	
Compensated Absences		982,668.75		172,697.50	809,971.25	75,000.00		
Other Post-Employment Benefits (OPEB)		485,947.00	504,139.00	411,042.00	579,044.00			
Net Pension Liability		62,330,000.00	11,212,000.00		73,542,000.00			
Totals for Debt Entered:		\$75,070,210.74	\$11,733,497.00	\$2,082,251.05	\$84,721,456.69	\$1,677,505.18	\$248,272.61	

General Fund (10)

Section 1: Tuition/Purchased Services as Reported within Expenditure Detail

	Amount
Tuition Reported in General Fund Expenditures 1000-560	4,192,027.22
Purchased Services in General Fund Expenditures 1000-594 and 1000-597	
Section 1 Total	\$4,192,027.22

Section 2: Tuition Paid to Institution Types During Fiscal Year

	Tuition Paid For Nonspecial Education	Tuition Paid For Special Education	Total
1 1306 Institutions			
2 Institutionalized Children's Programs			
3 Juveniles Incarcerated in Adult Facilities	174,327.65	396,498.66	570,826.31
4 Residential Treatment Facilities			
5 Other Local Education Agencies			
6 Brick and Mortar Charter Schools	2,381,355.48		2,381,355.48
7 Cyber Charter Schools			
8 Career and Technology Centers	813,320.00		813,320.00
9 Approved Private Schools			
10 PA Chartered Schools for the Deaf and Blind			
11 Private Residential Rehabilitative Institutions			
12 Juvenile Detention Centers	29,500.00		29,500.00
13 Special Program Jointures			
14 Other Tuition Not Included Elsewhere In This Section	169,067.38	227,958.05	397,025.43
Section 2 Total	\$3,567,570.51	\$624,456.71	\$4,192,027.22

- | | | |
|----|--|-----------|
| 1. | <u>Student Transportation Services for Educational Field Trips</u> | |
| 2. | <u>Student Transportation Services for Student Activities</u> | 79,319.00 |
| 3. | <u>Rental of Vehicles for Student Transportation Services</u> | |
| 4. | <u>Capital Reserve Funds</u> | |

Include only district-owned transportation expenditures paid from State or local money.

DO NOT include federal expenditures or payments to contract service providers.

Contracted transportation services should not be recorded on this schedule.

Food Service / Cafeteria Operations Fund (51)

3000 Operation of Non-Instructional Services

	<u>Total</u>
100 Personnel Services – Salaries	
100 Personnel Services – Salaries	739,959.55
Total Personnel Services – Salaries	\$739,959.55
200 Personnel Services – Employee Benefits	
210 Group Insurance – Contracted Provider	248,480.93
220 Social Security Contributions	52,530.11
230 PSERS Retirement Contributions	210,372.09
250 Unemployment Compensation	378.46
260 Workers' Compensation	2,770.45
270 Group Insurance – Self-Insurance	(3,712.63)
280 Other Post-Employment Benefits (OPEB)	9,835.22
Total Personnel Services – Employee Benefits	\$520,654.63
400 Purchased Property Services	
430 Repairs and Maintenance Services	14,715.00
Total Purchased Property Services	\$14,715.00
600 Supplies	
610 General Supplies	40,700.24
630 Food	728,261.58
Total Supplies	\$768,961.82
700 Property	
740 Depreciation	467.80
Total Property	\$467.80
800 Other Objects	
810 Dues and Fees	337.98
890 Miscellaneous Expenditures	360.02
Total Other Objects	\$698.00
Total 3000 Operation of Non-Instructional Services	\$2,045,456.80

Food Service / Cafeteria Operations Fund (51)

3100 Food Services

	<u>Elementary</u>	<u>Secondary</u>	<u>Federal</u>	<u>Total</u>
100 Personnel Services – Salaries				
100 Personnel Services – Salaries				739,959.55
Total Personnel Services – Salaries				\$739,959.55
200 Personnel Services – Employee Benefits				
210 Group Insurance – Contracted Provider				248,480.93
220 Social Security Contributions				52,530.11
230 PSERS Retirement Contributions				210,372.09
250 Unemployment Compensation				378.46
260 Workers' Compensation				2,770.45
270 Group Insurance – Self-Insurance				(3,712.63)
280 Other Post-Employment Benefits (OPEB)				9,835.22
Total Personnel Services – Employee Benefits				\$520,654.63
400 Purchased Property Services				
430 Repairs and Maintenance Services				14,715.00
Total Purchased Property Services				\$14,715.00
600 Supplies				
610 General Supplies				40,700.24
630 Food				728,261.58
Total Supplies				\$768,961.82
700 Property				
740 Depreciation				467.80
Total Property				\$467.80
800 Other Objects				
810 Dues and Fees				337.98
890 Miscellaneous Expenditures				360.02
Total Other Objects				\$698.00
Total 3100 Food Services				\$2,045,456.80

	<u>Food Service(51)</u>	<u>Child Care Operations(52)</u>	<u>Other Enterprise(58)</u>	<u>Internal Service(60)</u>	<u>Total</u>
3000 <u>Operation of Non-Instructional Services</u>					
3100 Food Services	2,045,456.80				2,045,456.80
Total Operation of Non-Instructional Services	\$2,045,456.80				\$2,045,456.80
TOTAL ACTUAL EXPENDITURES & OTHER FINANCING USES	\$2,045,456.80				\$2,045,456.80

