

LEA Name : Pottsville Area SD  
Address : 1501 W Laurel Blvd  
Pottsville , PA 17901

County : Schuylkill  
AUN Number : 129546103  
LEA Type : SD

## Annual Financial Report Accuracy Certification Statement

For Fiscal Year Ending

6/30/2020

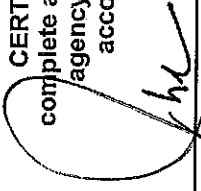
Pennsylvania Department of Education

&

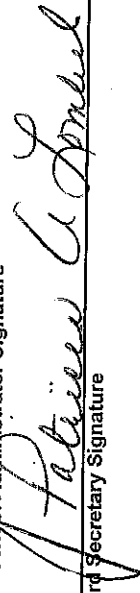
Office of Comptroller Operations

PDE-2056: Intermediate Unit

PDE-2057: School District, AVTS/CTC, Charter School,  
and Special Program Jointure

  
\_\_\_\_\_  
Chief School Administrator Signature

CERTIFICATION: By signing this page I agree that the electronic data submitted is a complete and accurate statement of the financial operations and status of the local education agency for the fiscal year. It has been prepared in accordance with generally accepted accounting principles and established Commonwealth of PA reporting guidelines.

  
\_\_\_\_\_  
Board Secretary Signature

11/20/2020  
Date

1/20/2020  
Date

Corinne Mason

Contact Person

(570)621-2905

Ext :

Contact Person Telephone Number

cmason@pottsville.k12.pa.us

Contact Person E-mail Address

Contact Person Fax Number



# Audit Certification

## Annual Financial Report:

For Fiscal Year Ending 6/30/2020  
(Pursuant to PA School Code Section 218(b))

LEA Name : Pottsville Area SD  
AUN Number : 129546103  
County : Schuylkill

Audit Certification Due:  
12/31/2020

This certification is applicable to the Annual Financial Report data submitted through the Consolidated Financial Reporting System (CFRS).

CERTIFICATION: By signing this page I agree that the financial statements of the school have been properly audited as noted above pursuant to Article XXIV, and in the auditor's professional opinion, the Annual Financial Report (PDE-2057) submitted through CFRS is materially consistent with the audited financial statements.

Chief School Administrator

  
Signature

11/20/2020  
Date

Board Secretary

  
Signature

11/20/2020  
Date

Corinne Mason

Contact Person

(570)621-2905

Contact Person Telephone Number

Ext :

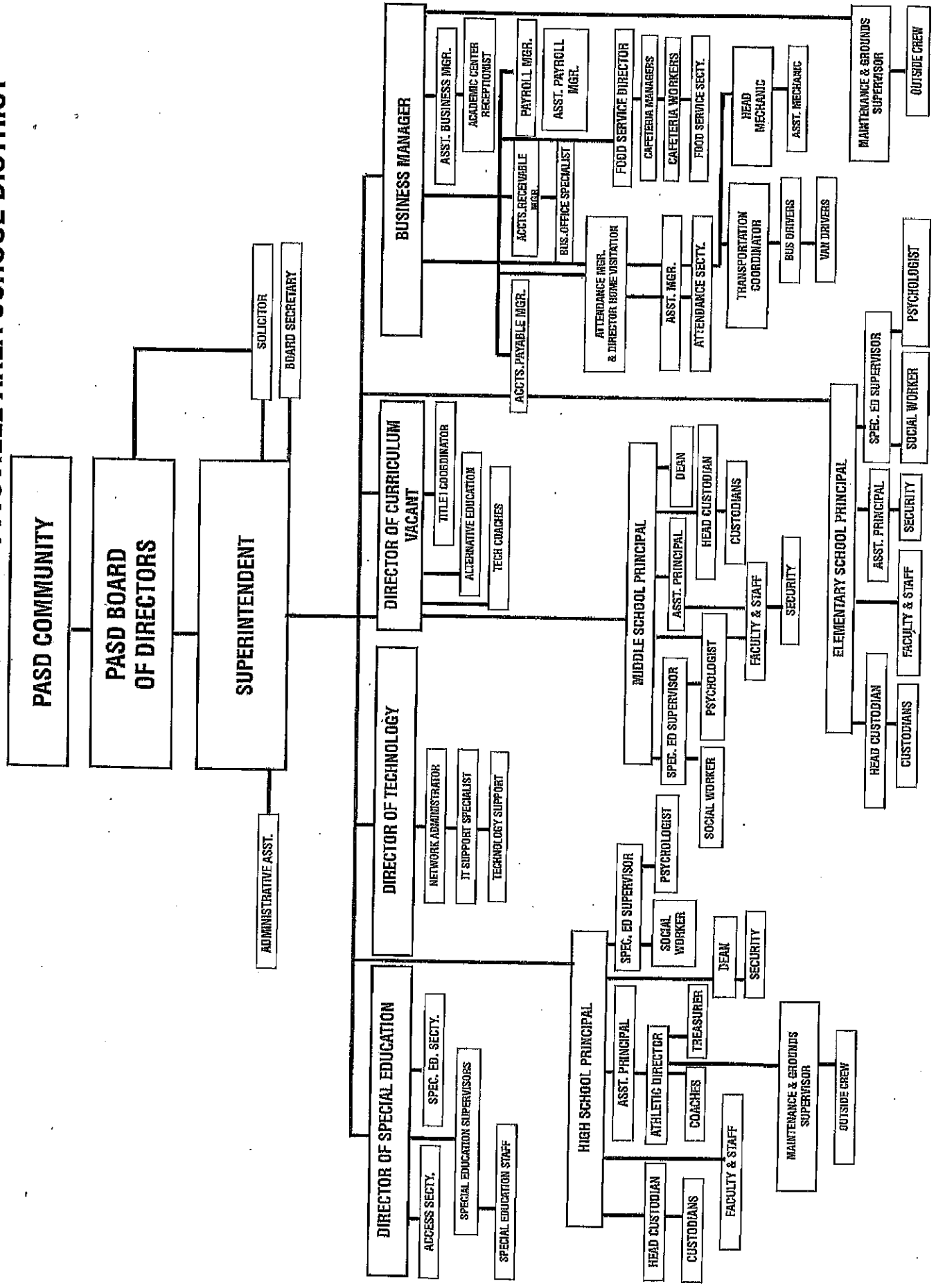
cmason@pottsville.k12.pa.us

Contact Person E-mail Address

Contact Person Fax Number



# ORGANIZATIONAL CHART FOR THE POTTSVILLE AREA SCHOOL DISTRICT



Book	Policy Manual
Section	600 Finances
Title	GASB Statement 34
Code	622
Status	Active
Adopted	May 13, 2009

**Purpose**

The Board recognizes the need to implement the required accounting and financial reporting standards stipulated by the Pennsylvania Department of Education.

The primary objectives of implementing the GASB Statement 34 are to assure compliance with state requirements, and properly account for both the financial and economic resources of the district.

**Authority**

Participation of the school district in any such activity shall be in accordance with Board policy. [1][2]

**Delegation of Responsibility**

The responsibility to coordinate the compilation and preparation of all information necessary to implement this policy is delegated to the Business Manager.

The designated individual shall be responsible for implementing the necessary procedures to establish and maintain a fixed asset inventory, including depreciation schedules. Depreciation shall be computed on a straight-line basis over the useful lives of the assets, using an averaging convention. Normal maintenance and repairs shall be charged to expense as incurred; major renewals and betterments that materially extend the life or increase the value of the asset shall be capitalized. A schedule of accumulated depreciation shall be consistent from year to year. The basis for depreciation, including groups of assets and useful lives, shall be in writing and submitted for review to the Board.

The Business Manager shall prepare the required Management Discussion and Analysis (MD&A). The MD&A shall be in the form required by GASB Statement 34 and shall be submitted to the Board for approval, prior to publication.

Prior to submission of the MD&A for Board approval, the district's independent auditors shall review the MD&A, in accordance with SAS No. 52, "Required Supplementary Information".

### Guidelines

In order to associate debt with acquired assets and to avoid net asset deficits, any asset that has been acquired with debt proceeds shall be capitalized, regardless of the cost of the asset. The asset life of these assets shall be considered relative to the time of the respective debt amortizations.

For all other assets not acquired by debt proceeds, the dollar value of any single item for inclusion in the fixed assets accounts shall be not less than \$4,000.

The capitalization threshold shall be set at a level that will capture at least eighty percent (80%) of all fixed assets.

The assets listed below do not normally individually meet capitalization threshold criteria:

1. Library books.
2. Classroom texts.
3. Computer equipment.
4. Classroom furniture.

These asset category costs shall be capitalized and depreciated as groups when that group's acquisition cost exceeds the capitalization threshold in any given fiscal year.

For group asset depreciation purposes, the estimated useful life of the group may be based on the weighted average or simple average of the useful life of individual items, or on an assessment of the life of the group as a whole. Periodically, the district shall review the estimated life of groups of assets and adjust the remaining depreciation life of the group.

Assets that fall below the capitalization threshold for GASB 34 reporting purposes may still be significant for insurance, warranty service, and obsolescence/replacement policy tracking purposes. The district may record and maintain these non-GASB 34 asset inventories in subsidiary ledgers.

#### Legal

1. 24 P.S. 218
2. 24 P.S. 613

Governmental Accounting Standards Board, Statement No. 34

<u>Val Number</u>	<u>Description</u>	<u>Justification</u>
30746	Revenue Detail - Fund 32. Data has been entered for Revenue code 9910 - Other Financing Sources. Please provide a description of this entry. REV Detail 9910, Fund 32: \$6.85	PSDLAF Capital Projects account closed out and transferred to Fund 32 - Capital Improvement Account
41110	Expenditure Detail - There is an entry in function 5110- 990 object "Other". Please explain what constitutes "Other". Expenditure 5110-990, Fund 39: \$6.85	PSDLAF Capital Projects account fund 39 closed out and transferred to Fund 32 - Capital Improvement Account.



Amounts Expressed in Whole Dollars

	General Fund (10)	Student Sponsored Activity Fund (21)	Public Purpose Trust (27)	Other Compf Approved (28)	Athletic / Activity (29)
--	----------------------	--	------------------------------	------------------------------	-----------------------------

**Assets And Deferred Outflows Of Resources**

**Assets**

0100 Cash and Cash Equivalents	1,594,922				
0110 Investments					
0120 Taxes Receivable	4,188,528				
0130 Due From Other Funds	2,951				
0141 Due From Other Governments					
0142 State Revenue Receivable					
0143 Federal Revenue Receivable					
0145 Other Intergovernmental Revenue Receivable	1,950,237				
0146 Due from Primary Government					
0147 Due from Component Unit					
0150 Other Receivables					
0170 Inventories					
0180 Prepaid Expenses (Expenditures)					
0190 Other Current Assets					

**Total Assets**

\$7,736,638

0910 Deferred Outflows of Resources

**Total Assets And Deferred Outflows Of Resources**

\$7,736,638

Amounts Expressed in Whole Dollars					
	Capital Reserve (690)	Capital Reserve (1431)	Other Capital Projects Fund	Debt Service	Permanent
	1850	(32)	(39)	(40)	(90)
	(31)				

**Assets And Deferred Outflows Of Resources**

**Assets**

0100 Cash and Cash Equivalents	612,947
0110 Investments	
0120 Taxes Receivable	
0130 Due From Other Funds	
0141 Due From Other Governments	
0142 State Revenue Receivable	
0143 Federal Revenue Receivable	
0145 Other Intergovernmental Revenue Receivable	
0146 Due from Primary Government	
0147 Due from Component Unit	
0150 Other Receivables	
0170 Inventories	
0180 Prepaid Expenses (Expenditures)	
0190 Other Current Assets	

**Total Assets**

0910 Deferred Outflows of Resources

**Total Assets And Deferred Outflows Of Resources**

\$612,947

\$612,947

Amounts Expressed in Whole Dollars

Total Governmental Funds

Assets And Deferred Outflows Of Resources

Assets

0100 Cash and Cash Equivalents	2,207,869
0110 Investments	
0120 Taxes Receivable	4,188,528
0130 Due From Other Funds	2,951
0141 Due From Other Governments	
0142 State Revenue Receivable	
0143 Federal Revenue Receivable	
0145 Other Intergovernmental Revenue Receivable	1,950,237
0146 Due from Primary Government	
0147 Due from Component Unit	
0150 Other Receivables	
0170 Inventories	
0180 Prepaid Expenses (Expenditures)	
0190 Other Current Assets	

Total Assets

\$8,349,585

0910 Deferred Outflows of Resources

Total Assets And Deferred Outflows Of Resources

\$8,349,585

Amounts Expressed in Whole Dollars

	General Fund (10)	Student Sponsored Activity Fund (21)	Public Purpose Trust (27)	Other Compt. Approved (28)	Athletic / Activity (29)
<b>Liabilities And Deferred Inflows Of Resources And Fund Balances</b>					
<b>Liabilities</b>					
0400 Due to Other Funds	510,139				
0411 Due to Other Governments					
0412 Due to Primary Government					
0413 Due to Component Unit					
0420 Accounts Payable	295,104				
0430 Contracts Payable					
0440 Current Portion of Long-Term Debt					
0450 Short-Term Payables					
0461 Accrued Salaries and Benefits	4,011,021				
0462 Payroll Deductions and Withholding					
0480 Unearned Revenues					
0490 Other Current Liabilities					
<b>Total Liabilities</b>	<b>\$4,816,264</b>				
0950 Deferred Inflows of Resources					3,222,674
<b>Fund Balances</b>					
0810 Nonspendable Fund Balance					
0820 Restricted Fund Balance					
0830 Committed Fund Balance					
0840 Assigned Fund Balance					
0850 Unassigned Fund Balance					(302,300)
<b>Total Fund Balances</b>					<b>(\$302,300)</b>
<b>Total Liabilities, Deferred Inflows Of Resources And Fund Balances</b>					<b>\$7,736,638</b>

Amounts Expressed in Whole Dollars

<u>Capital Reserve (690)</u>	<u>Capital Reserve (1431)</u>	<u>Other Capital Projects Fund (39)</u>	<u>Debt Service (40)</u>	<u>Permanent (90)</u>
1850	(32)	(39)	(40)	(90)
(31)				

**Liabilities And Deferred Inflows Of Resources And Fund Balances**

**Liabilities**

0400 Due to Other Funds	
0411 Due to Other Governments	
0412 Due to Primary Government	
0413 Due to Component Unit	
0420 Accounts Payable	
0430 Contracts Payable	
0440 Current Portion of Long-Term Debt	
0450 Short-Term Payables	
0461 Accrued Salaries and Benefits	
0462 Payroll Deductions and Withholding	
0480 Unearned Revenues	
0490 Other Current Liabilities	
<b>Total Liabilities</b>	

**Fund Balances**

0810 Nonspendable Fund Balance	
0820 Restricted Fund Balance	612,947
0830 Committed Fund Balance	
0840 Assigned Fund Balance	
0850 Unassigned Fund Balance	
<b>Total Fund Balances</b>	<b>\$612,947</b>

**Total Liabilities, Deferred Inflows Of Resources And Fund Balances**

	<b>\$612,947</b>
--	------------------

Amounts Expressed in Whole Dollars Total Governmental Funds

**Liabilities And Deferred Inflows Of Resources And Fund Balances**

<b>Liabilities</b>	
0400 Due to Other Funds	510,139
0411 Due to Other Governments	
0412 Due to Primary Government	
0413 Due to Component Unit	
0420 Accounts Payable	295,104
0430 Contracts Payable	
0440 Current Portion of Long-Term Debt	
0450 Short-Term Payables	
0461 Accrued Salaries and Benefits	4,011,021
0462 Payroll Deductions and Withholding	
0480 Unearned Revenues	
0490 Other Current Liabilities	
<b>Total Liabilities</b>	<b>\$4,816,264</b>
0950 Deferred Inflows of Resources	3,222,874
<b>Fund Balances</b>	
0810 Nonspendable Fund Balance	
0820 Restricted Fund Balance	612,947
0830 Committed Fund Balance	
0840 Assigned Fund Balance	
0850 Unassigned Fund Balance	(302,300)
<b>Total Fund Balances</b>	<b>\$310,647</b>
<b>Total Liabilities, Deferred Inflows Of Resources And Fund Balances</b>	<b>\$8,349,585</b>

	General Fund (10)	Student Sponsored Activity Fund (21)	Public Purpose Trust (27)	Other Compt Approved (28)	Athletic / Activity (29)
Amounts Expressed in Whole Dollars					
<b>Revenues</b>					
6000 Revenue from Local Sources	18,363,612				
7000 Revenue from State Sources	21,851,088				
8000 Revenue from Federal Sources	1,080,223				
<b>Total Revenues</b>	<b>\$41,294,923</b>				
<b>Expenditures</b>					
1000 Instruction	26,514,100				
2000 Support Services	11,811,827				
3000 Operation of Non-Instructional Services	1,029,741				
4000 Facilities Acquisition, Construction and Improvement Services					
5110 Debt Service	1,821,812				
5130 Refund of Prior Year Revenues / Receipts	17				
<b>Total Expenditures</b>	<b>\$41,177,497</b>				
<b>Excess (Deficiency) Of Revenues Over Expenditures</b>	<b>\$117,426</b>				
<b>Other Financing Sources (Uses)</b>					
9110 Face Value of Bonds Issued					
9120 Proceeds from Refunding of Bonds					
9130 Bond Premiums					
9200 Proceeds from Extended-Term Financing					
9300 Interfund Transfers - IN					
9400 Sale of or Compensation for Loss of Fixed Assets	482,944				
9710 Transfers from Component Units					
9720 Transfers from Primary Governments					
9910 Other Financing Sources Not Listed in the 9000 Series					
9990 Insurance Recoveries					
5120 Debt Service - Refunded Bonds					
5150 Bond Discounts					
5200 Interfund Transfers - Out					
5300 Transfers Out to Component Units/Primary Governments					
<b>Total Other Financing Sources (Uses)</b>	<b>\$482,944</b>				

	Amounts Expressed in Whole Dollars				
	Capital Reserve (690, 1850) (31)	Capital Reserve (1431) (32)	Other Capital Projects Fund (39)	Debt Service (40)	Permanent (90)
<b>Revenues</b>					
6000 Revenue from Local Sources		13,496			
7000 Revenue from State Sources					
8000 Revenue from Federal Sources		\$13,496			
<b>Total Revenues</b>					
<b>Expenditures</b>					
1000 Instruction					
2000 Support Services		17,410			
3000 Operation of Non-Instructional Services					
4000 Facilities Acquisition, Construction and Improvement Services					
5110 Debt Service				7	
5130 Refund of Prior Year Revenues / Receipts					
<b>Total Expenditures</b>		\$17,410		\$7	
<b>Excess (Deficiency) Of Revenues Over Expenditures</b>		<b>(\$3,914)</b>		<b>(\$7)</b>	
<b>Other Financing Sources (Uses)</b>					
9110 Face Value of Bonds Issued					
9120 Proceeds from Refunding of Bonds					
9130 Bond Premiums					
9200 Proceeds from Extended-Term Financing					
9300 Interfund Transfers - IN					
9400 Sale of or Compensation for Loss of Fixed Assets					
9710 Transfers from Component Units					
9720 Transfers from Primary Governments					
9910 Other Financing Sources Not Listed in the 9000 Series					7
9990 Insurance Recoveries					
5120 Debt Service - Refunded Bonds					
5150 Bond Discounts					
5200 Interfund Transfers - Out					
5300 Transfers Out to Component Units/Primary Governments					
<b>Total Other Financing Sources (Uses)</b>					<b>\$7</b>



Statement of Revenues, Expenditures, and Changes in Fund Balances - Governmental Funds (REG)

Amounts Expressed in Whole Dollars

	<u>Total Governmental Funds</u>
<b>Revenues</b>	
6000 Revenue from Local Sources	18,377,108
7000 Revenue from State Sources	21,851,088
8000 Revenue from Federal Sources	1,080,223
<b>Total Revenues</b>	<b>\$41,308,419</b>
<b>Expenditures</b>	
1000 Instruction	26,514,100
2000 Support Services	11,829,237
3000 Operation of Non-Instructional Services	1,029,741
4000 Facilities Acquisition, Construction and Improvement Services	
5110 Debt Service	1,821,819
5130 Refund of Prior Year Revenues / Receipts	17
<b>Total Expenditures</b>	<b>\$41,194,914</b>
<b>Excess (Deficiency) Of Revenues Over Expenditures</b>	<b>\$113,505</b>
<b>Other Financing Sources (Uses)</b>	
9110 Face Value of Bonds Issued	
9120 Proceeds from Refunding of Bonds	
9130 Bond Premiums	
9200 Proceeds from Extended-Term Financing	
9300 Interfund Transfers - IN	
9400 Sale of or Compensation for Loss of Fixed Assets	482,944
9710 Transfers from Component Units	
9720 Transfers from Primary Governments	
9910 Other Financing Sources Not Listed in the 9000 Series	7
9990 Insurance Recoveries	
5120 Debt Service - Refunded Bonds	
5150 Bond Discounts	
5200 Interfund Transfers - Out	
5300 Transfers Out to Component Units/Primary Governments	
<b>Total Other Financing Sources (Uses)</b>	<b>\$482,951</b>

Amounts Expressed in Whole Dollars

	General Fund	Student Sponsored	Public Purpose Trust	Other Compt. Approved	Athletic /Activity
	(10)	Activity Fund	(27)	(28)	(29)
		(21)			

**Special And Extraordinary Items**

- 9920 Special Items – Gains
- 9930 Extraordinary Items – Gains
- 5520 Special Items – Losses
- 5530 Extraordinary Items – Losses

<b>Net Change In Fund Balances</b>	<b>\$600,370</b>				
<b>Fund Balance</b>					
0001 Fund Balance - Beginning of Fiscal Year	(902,670)				
<b>Fund Balance - End Of Year</b>	<b>(\$302,300)</b>				

Amounts Expressed in Whole Dollars	Capital Reserve (690)	Capital Reserve (1431)	Other Capital Projects Fund (39)	Debt Service (40)	Permanent (90)
<b>Special And Extraordinary Items</b>					
9920 Special Items - Gains	1850				
9930 Extraordinary Items - Gains	(31)				
5520 Special Items - Losses					
5530 Extraordinary Items - Losses					
<b>Net Change In Fund Balances</b>		(\$3,907)			
<b>Fund Balance</b>					
0001 Fund Balance - Beginning of Fiscal Year		616,854	7		
<b>Fund Balance - End Of Year</b>		<b>\$612,947</b>			

Amounts Expressed in Whole Dollars Total Governmental Funds

**Special And Extraordinary Items**

- 9920 Special Items — Gains
- 9930 Extraordinary Items — Gains
- 5520 Special Items — Losses
- 5530 Extraordinary Items — Losses

**Net Change In Fund Balances** \$596,456

**Fund Balance**

0001 Fund Balance - Beginning of Fiscal Year (285,809)

**Fund Balance - End Of Year** \$310,647

Amounts Expressed in Whole Dollars		Food Service (51)	Child Care Operations (52)	Other Enterprise (53)	TOTAL	Internal Service (60)
<b>Assets And Deferred Outflows Of Resources</b>						
<b>Current Assets</b>						
0100	Cash and Cash Equivalents	71,195			71,195	
0110	Investments					
0130	Due From Other Funds					
0141	Due From Other Governments					
0142	State Revenue Receivable					
0143	Federal Revenue Receivable					
0146	Due from Primary Government					
0147	Due from Component Unit					
0150	Other Receivables	49,966			49,966	
0170	Inventories	54,031			54,031	
0180	Prepaid Expenses (Expenditures)					
0190	Other Current Assets					
	<b>Total Current Assets</b>	<b>\$175,192</b>			<b>\$175,192</b>	
<b>Noncurrent Assets</b>						
0211	Land					
0212	Site Improvements (Net)					
0220	Buildings and Building Improvements (Net)					
0230	Machinery, Equipment and Furniture (Net)	9,769			9,769	
0250	Construction in Progress					
0260	Long Term Prepayments					
0290	Other Noncurrent Assets					
	<b>Total Noncurrent Assets</b>	<b>\$9,769</b>			<b>\$9,769</b>	
0910	Deferred Outflows of Resources	54,047			54,047	
	<b>Total Assets And Deferred Outflows Of Resources</b>	<b>\$239,008</b>			<b>\$239,008</b>	

	Amounts Expressed in Whole Dollars				
	<u>Food Service</u> (51)	<u>Child Care</u> <u>Operations</u> (52)	<u>Other Enterprise</u> (58)	<u>TOTAL</u>	<u>Internal Service</u> (60)
<b>Liabilities And Deferred Inflows Of Resources And Net Position</b>					
<b>Current Liabilities</b>					
0400 Due to Other Funds	2,951			2,951	
0411 Due to Other Governments					
0413 Due to Component Unit					
0420 Accounts Payable	17,220			17,220	
0430 Contracts Payable					
0440 Current Portion of Long-Term Debt					
0450 Short-Term Payables					
0461 Accrued Salaries and Benefits	15,965			15,965	
0462 Payroll Deductions and Withholding					
0480 Unearned Revenues					
0490 Other Current Liabilities					
<b>Total Current Liabilities</b>	<b>\$36,136</b>			<b>\$36,136</b>	
<b>Noncurrent Liabilities</b>					
0510 Bonds Payable					
0520 Extended-Term Financing Agreements Payable					
0530 Lease-Purchase Obligations					
0540 Accumulated Compensated Absences	9,100			9,100	
0550 Authority Lease Obligations					
0560 Other Post-Employment Benefits (OPEB)	163,178			163,178	
0570 Net Pension Liability	2,305,847			2,305,847	
0599 Other Noncurrent Liabilities					
<b>Total Noncurrent Liabilities</b>	<b>\$2,478,125</b>			<b>\$2,478,125</b>	
<b>Total Liabilities</b>	<b>\$2,514,261</b>			<b>\$2,514,261</b>	
0950 Deferred Inflows of Resources					442,097
<b>Net Position</b>					
0791 Net Investment in Capital Assets					9,769
0008 Restricted Net Position (0792 - 0798)					
0799 Unrestricted Net Position					(2,727,119)
<b>Total Net Position</b>					<b>(\$2,717,350)</b>
<b>Total Liabilities And Deferred Inflows Of Resources And Net Position</b>					<b>\$239,008</b>

	Amounts Expressed in Whole Dollars	Food Service (51)	Child Care Operations (52)	Other Enterprise (58)	TOTAL	Internal Service (60)
<b>Operating Revenues</b>						
6600 Food Service Revenue		452,315			452,315	
0071 Charges for Services						
0072 Other Operating Revenue		6,388			6,388	
<b>Total Operating Revenues</b>		<b>\$458,703</b>			<b>\$458,703</b>	
<b>Operating Expenses</b>						
100 Personnel Services – Salaries		698,524			698,524	
200 Personnel Services – Employee Benefits		454,678			454,678	
300 Purchased Professional and Technical Services						
400 Purchased Property Services		12,353			12,353	
500 Other Purchased Services						
600 Supplies		681,850			681,850	
740 Depreciation		1,381			1,381	
810 Dues and Fees						
890 Miscellaneous Expenditures		564			564	
<b>Total Operating Expenses</b>		<b>\$1,849,350</b>			<b>\$1,849,350</b>	
<b>Operating Income (Loss)</b>		<b>(\$1,390,647)</b>			<b>(\$1,390,647)</b>	
<b>Non Operating Revenues (Expenses)</b>						
6500 Earnings on Investments		838			838	
6920 Contributions and Donations from Private Sources						
6930 Gains or Losses on Sale of Fixed Assets						
6991 Refunds of a Prior Year Expenditure						
7000 Revenue from State Sources		243,574			243,574	
8000 Revenue from Federal Sources		1,236,638			1,236,638	
9990 Insurance Recoveries						
820 Claims and Judgments Against the LEA						
830 Interest						
<b>TOTAL Non Operating Revenues (Expenses)</b>		<b>\$1,481,050</b>			<b>\$1,481,050</b>	
<b>Income (Loss) Before Contributions And Transfers</b>		<b>\$90,403</b>			<b>\$90,403</b>	

Amounts Expressed in Whole Dollars	Food Service (51)	Child Care Operations (52)	Other Enterprise (58)	TOTAL	Internal Service (60)
<b>Contributions, Transfers, and Special and Extraordinary Items</b>					
5200 Interfund Transfers – Out					
5300 Transfers Out to Component Units/Primary Governments					
5520 Special Items – Losses					
5530 Extraordinary Items – Losses					
9300 Interfund Transfers - IN					
9500 Capital Contributions					
9700 Transfers IN From Component Units/Primary Governments					
9920 Special Items – Gains					
9930 Extraordinary Items – Gains					
<b>Change in Net Position</b>	<b>\$90,403</b>			<b>\$90,403</b>	
0002 Net Position - Beginning of Fiscal Year	45,593			45,593	
0003 Accounting Changes / Residual Equity Transfers	(2,853,345)			(2,853,345)	
<b>Net Position - End Of Year</b>	<b>(\$2,717,349)</b>			<b>(\$2,717,349)</b>	



Amounts Expressed in Whole Dollars

**Cash Flows From Operating Activities**

0011	Cash Receipts From Users	458,703				
0012	Cash Receipts From Assessments Made to Other Funds					
0013	Cash Receipts From Earnings on Investments					
0014	Cash Receipts From Other Operating Revenue					
0015	Cash Payments To Employees For Services	1,153,202				
0016	Cash Payments For Insurance Claims					
0017	Cash Payments To Suppliers For Goods and Services	862,390				
0018	Cash Payments For Other Operating Expenses					

**Net Cash Provided By (Used For) Operating Activities**

(\$1,556,889)

**Cash Flows From Non-Capital Financing Activities**

0021	Receipts From Local Sources - 6000					
0022	Receipts From State Sources - 7000	243,574				
0023	Receipts From Federal Sources -8000	1,236,638				
0024	Notes and Loans Received (Repaid)					
0025	Interest Paid on Notes/Loans - 5100-830					
0026	Operating Transfers In (Out)/Residual Equity Trans					
0027	Operating Transfers In (Out) Primary Government / Comp Unit					
0028	Receipts From Refund of Prior Year Expenditures - 6991					
0029	Special and Extraordinary Gains (losses)					
0030	Receipts from Insurance Recoveries -9990					

**Net Cash Prov By (Used for) Non-Capital Financing Activities**

\$1,480,212

**Cash Flows From Capital and Related Financing Activities**

0031	Payments For Fac Acq, Const, and Imp - 4000					
0032	Gain / (Loss) on Sale of Fixed Assets - 6930					
0033	Proceeds From Extended Term Financing - 9200					
0034	Principal Paid on Financing Agreements					
0035	Interest Paid on Financing Agreements - 5100-830					
0036	(Inc) Dec in Contributed Capital					

**Net Cash Prov By (Used for) Capital and Related Financing Activities**

**Cash Flows From Investing Activities**

0041	Earnings on Investments - 6500					838
0042	Purchase of Inv Securities / Deposits to Inv Pools					
0043	Receipts From Investment Pool Withdrawals					
0044	Proceeds from Sale and Maturity of Inv Securities					

0045 Loans Received (Paid)

Net Cash Prov By (Used for) Investing Activities

\$838

\$838

	Food Service (51)	Child Care Operations (52)	Other Enterprise (58)	TOTAL	Internal Service (60)
<b>Net Increase (Decrease) in Cash Flows</b>	(75,839)			(75,839)	
0004 Cash and Cash Equivalents Beginning of Year	147,034			147,034	
<b>Cash and Cash Equivalents at Year End</b>	<b>\$71,195</b>			<b>\$71,195</b>	

**Reconciliation of Operating Income (Loss) To Net Cash Provided by (Used For) Operating Activities**

0005 Operating Income (Loss) per REP (1,390,647)

**Adjustments**

0051 Depreciation and Net Amortization 1,381

0052 Provision for Uncollectible Accounts

0053 Other Adjustments 47,062

**Effect of Changes in Assets, Liabilities, Deferred Outflows and Deferred Inflows**

0054 (Inc) Dec in Accounts Receivable (0120-0150) 31,068

0055 Advances to Other Funds (0160) (250,588)

0056 (Inc) Dec in Inventories (0170) 23,267

0057 (Inc) Dec in Prepaid Expenses (0180)

0058 (Inc) Dec in Other Current or Noncurrent Assets

0064 Deferred Outflows (0910) 60,478

0059 Inc (Dec) in Accounts Payable (0400-0450) 9,678

0060 Inc (Dec) in Accrued Salaries/Benefits (0461) 17,127

0065 Inc (Dec) in Net Pension Liabilities (0570) (114,517)

0066 Inc (Dec) in Other Postemp Benefit Oblig (0560) 3,662

0061 Inc (Dec) in Payroll Deductions/Withholding (0462)

0062 Inc (Dec) in Unearned Revenue (0480)

0063 Inc (Dec) in Other Current or Noncurrent Liabilities

0067 Deferred Inflows (0950) 5,140

**Total Adjustments**

5,140

**Cash Provided By (Used for) Total**

(\$166,242)

(\$1,556,889)

COMBINED STATEMENT OF CASH FLOWS  
SCHEDULE OF NONCASH INVESTING, CAPITAL, AND FINANCING ACTIVITIES

Explanation of Transaction and Balance Sheet Effect	Amount
Total	

	Amounts Expressed in Whole Dollars	Private Purpose Trust (71)	Investment Trust (72)	Pension Trust (73)	Student Activity Custodial (81)
<b>Assets And Deferred Outflows Of Resources</b>					
<b>Assets</b>					
0100 Cash and Cash Equivalents		843,056			432,002
0110 Investments					
0130 Due From Other Funds					
0140 Due from Other Governments, Primary Government and Component Units					
0150 Other Receivables					
0170 Inventories					
0180 Prepaid Expenses (Expenditures)					
0190 Other Current Assets					
0220 Buildings and Building Improvements (Net)					
0230 Machinery, Equipment and Furniture (Net)					
<b>Total Assets</b>		<b>\$843,056</b>			<b>\$432,002</b>
0910 Deferred Outflows of Resources					
<b>Total Assets And Deferred Outflows Of Resources</b>		<b>\$843,056</b>			<b>\$432,002</b>

	Amounts Expressed in Whole Dollars	Other Custodial (89)	Fiduciary Component Units (98)	Total Fiduciary Funds
<b>Assets And Deferred Outflows Of Resources</b>				
<b>Assets</b>				
0100 Cash and Cash Equivalents				1,275,058
0110 Investments				
0130 Due From Other Funds				
0140 Due from Other Governments, Primary Government and Component Units				
0150 Other Receivables				
0170 Inventories				
0180 Prepaid Expenses (Expenditures)				
0190 Other Current Assets				
0220 Buildings and Building Improvements (Net)				
0230 Machinery, Equipment and Furniture (Net)				
<b>Total Assets</b>				<b>\$1,275,058</b>
0910 Deferred Outflows of Resources				
<b>Total Assets And Deferred Outflows Of Resources</b>				<b>\$1,275,058</b>

Amounts Expressed in Whole Dollars	<u>Private Purpose Trust</u>	<u>Investment Trust</u>	<u>Pension Trust</u>	<u>Student Activity Custodial</u>
	(71)	(72)	(73)	(81)
<b>Liabilities, Deferred Inflows Of Resources And Net Position</b>				
<b>Liabilities</b>				
0400 Due to Other Funds				
0410 Due to Other Governments, Primary Government and Component Units				
0420 Accounts Payable				
0430 Contracts Payable				
0450 Short-Term Payables				
0460 Payroll Accruals and Withholdings				
0480 Unearned Revenues				
0490 Other Current Liabilities				
<b>Total Liabilities</b>				432,002
0950 Deferred Inflows of Resources				<b>\$432,002</b>
<b>Net Position</b>				
0791 Net Investment in Capital Assets				
0009 Restricted Net Position (0792 - 0798)				
0799 Unrestricted Net Position	843,056			
<b>Total Net Position</b>	<b>\$843,056</b>			
<b>Total Liabilities, Deferred Inflows Of Resources And Net Position</b>	<b>\$843,056</b>			<b>\$432,002</b>

Amounts Expressed in Whole Dollars	Other Custodial (89)	Fiduciary Component Units (98)	Total Fiduciary Funds
<b>Liabilities, Deferred Inflows Of Resources And Net Position</b>			
<b>Liabilities</b>			
0400 Due to Other Funds			
0410 Due to Other Governments, Primary Government and Component Units			
0420 Accounts Payable			
0430 Contracts Payable			
0450 Short-Term Payables			
0460 Payroll Accruals and Withholdings			
0480 Unearned Revenues			
0490 Other Current Liabilities			432,002
<b>Total Liabilities</b>			<b>\$432,002</b>
<b>Net Position</b>			
0950 Deferred Inflows of Resources			
0791 Net Investment in Capital Assets			
0009 Restricted Net Position (0792 - 0798)			
0799 Unrestricted Net Position			843,056
<b>Total Net Position</b>			<b>\$843,056</b>
<b>Total Liabilities, Deferred Inflows Of Resources And Net Position</b>			<b>\$1,275,058</b>



Statement of Changes in Net Position - Fiduciary Funds (CNAF)

Amounts Expressed in Whole Dollars	Private Purpose Trust (71)	Investment Trust (72)	Pension Trust (73)	Student Activity Custodial (81)	Other Custodial (89)	Fiduciary Component Units (98)
<b>Additions</b>						
0091 Gifts and Contributions	76,862					
0095 Net Investment Earnings						
0092 Other Additions	12,433					
<b>Deductions</b>						
0093 Scholarships Awarded	98,160					
0094 Other Deductions						
<b>Change in Net Position</b>	<b>(\$8,865)</b>					
0006 Net Position - Beginning of Fiscal Year	851,921					
0007 Net Position Held in Trust for Pension Benefits						
<b>Net Position - End of Fiscal Year</b>	<b>\$843,056</b>					

	Amounts Expressed in Whole Dollars	Total Fiduciary Funds
<b>Additions</b>		
0091 Gifts and Contributions		76,862
0095 Net Investment Earnings		
0092 Other Additions		12,433
<b>Deductions</b>		
0093 Scholarships Awarded		98,160
0094 Other Deductions		
<b>Change in Net Position</b>		<b>(\$8,865)</b>
0006 Net Position - Beginning of Fiscal Year		851,921
0007 Net Position Held in Trust for Pension Benefits		
<b>Net Position - End of Fiscal Year</b>		<b>\$843,056</b>

	<u>Revenue Reported In Current Year</u>	<u>Current Year Tax Accrual</u>	<u>Prior Year Tax Accrual</u>	<u>Taxes Collected In Current Year</u>
<b>Revenue from Local Sources</b>				
6111 Current Real Estate Taxes	10,396,144.28			10,396,144.28
6113 Public Utility Realty Taxes	13,199.11			13,199.11
6114 Payments in Lieu of Current Taxes - State / Local	65,215.52			65,215.52
6120 Current Per Capita Taxes, Section 679	39,595.70			39,595.70
6141 Current Act 511 Per Capita Taxes	39,595.70			39,595.70
6143 Current Act 511 Local Services Taxes	43,600.11	10,141.98	11,467.08	44,925.21
6151 Current Act 511 Earned Income Taxes	1,765,027.01	352,617.02	360,649.66	1,773,059.65
6152 Current Act 511 Occupation Taxes	537,458.46			537,458.46
6153 Current Act 511 Real Estate Transfer Taxes	194,152.30	18,998.38	12,649.82	187,803.74
6155 Current Act 511 Business Privilege Taxes	905,751.60	101,755.33	92,576.76	896,573.03
6411 Delinquent Real Estate Taxes	1,040,813.11	356,958.05	127,936.15	811,791.21
6420 Delinquent Per Capita Taxes, Section 679	15,279.72			15,279.72
6440 Delinquent Local Enabling Taxes - Flat Rate Assessments	18,110.59			18,110.59
6451 Delinquent Act 511 Earned Income Taxes	30,069.57			30,069.57
6452 Delinquent Act 511 Occupation Taxes	338,262.72	33,177.42	63,561.02	368,646.32
6455 Delinquent Act 511 Business Privilege Taxes	40,453.60			40,453.60
6500 Earnings on Investments	48,413.08			
6700 Revenues from LEA Activities	211,693.89			
6832 Federal IDEA Revenue Received as Pass Through	484,032.00			
6910 Rentals	6,660.99			
6920 Contributions and Donations from Private Sources	105,219.88			
6944 Receipts from Other LEAs in Pennsylvania - Education	1,872,016.37			
6961 Transportation Services Provided Other Pennsylvania LEAs	29,880.00			
6970 Services Provided Other Funds	1,421.70			
6991 Refunds of a Prior Year Expenditure	40,250.29			
6992 Energy Efficiency Revenues and Incentives	5,448.60			
6999 Other Revenues Not Specified Above	75,845.73			
<b>TOTAL Revenue from Local Sources</b>	<b>\$18,363,611.63</b>	<b>\$873,648.18</b>	<b>\$668,840.49</b>	<b>\$15,277,921.41</b>

	Revenue Reported In Current Year
<b>Revenue from State Sources</b>	
7111 Basic Education Funding-Formula	13,751,246.71
7112 Basic Education Funding-Social Security	538,328.90
7160 Tuition for Orphans Subsidy	13,588.28
7271 Special Education funds for School-Aged Pupils	1,953,774.29
7311 Pupil Transportation Subsidy	410,182.96
7312 Nonpublic and Charter School Pupil Transportation Subsidy	85,085.00
7330 Health Services (Medical, Dental, Nurse, Act 25)	53,371.39
7340 State Property Tax Reduction Allocation	703,943.51
7505 Ready to Learn Block Grant	488,569.00
7810 State Share of Social Security and Medicare Taxes	219,364.62
7820 State Share of Retirement Contributions	3,633,633.76
<b>TOTAL Revenue from State Sources</b>	<b>\$21,851,088.42</b>

	<u>Revenue Reported In Current Year</u>
<b>Revenue from Federal Sources</b>	
8514 NCLB, Title I - Improving the Academic Achievement of the Disadvantaged	775,511.21
8515 NCLB, Title II - Preparing, Training and Recruiting High Quality Teachers and Principals	117,198.59
8517 NCLB, Title IV - 21st Century Schools	161,710.26
8749 Other CARES Act Funding	4,792.91
8810 School-Based Access Medicaid Reimbursement Program (SBAP) Reimbursements (Access)	(4,243.33)
8820 Medical Assistance Reimbursement for Administrative Claiming (Quarterly) Program	25,253.68
<b>TOTAL Revenue from Federal Sources</b>	<b>\$1,080,223.32</b>

Revenue Reported  
In Current Year

Other Financing Sources

9400 Sale of or Compensation for Loss of Fixed Assets

482,943.64

TOTAL Other Financing Sources

\$482,943.64

TOTAL FROM ALL SOURCES

\$41,777,867.01

\$873,648.18

\$668,840.49

\$15,277,921.41

	<u>General Fund (10)</u>	<u>Student Sponsored Activity Fund (21)</u>	<u>Public Purpose Trust (27)</u>	<u>Other Compt Approved (28)</u>	<u>Athletic / Activity (29)</u>	<u>Capital Reserve (690, 1850) (31)</u>
<b>6000 Revenue from Local Sources</b>						
6111 Current Real Estate Taxes	10,396,144.28					
6113 Public Utility Reality Taxes	13,199.11					
6114 Payments in Lieu of Current Taxes - State / Local	65,215.52					
6120 Current Per Capita Taxes, Section 679	39,595.70					
6141 Current Act 511 Per Capita Taxes	39,595.70					
6143 Current Act 511 Local Services Taxes	43,600.11					
6151 Current Act 511 Earned Income Taxes	1,765,027.01					
6152 Current Act 511 Occupation Taxes	537,458.46					
6153 Current Act 511 Real Estate Transfer Taxes	194,152.30					
6155 Current Act 511 Business Privilege Taxes	905,751.60					
6411 Delinquent Real Estate Taxes	1,040,813.11					
6420 Delinquent Per Capita Taxes, Section 679	15,279.72					
6440 Delinquent Local Enabling Taxes - Flat Rate Assessments	18,110.59					
6451 Delinquent Act 511 Earned Income Taxes	30,069.57					
6452 Delinquent Act 511 Occupation Taxes	338,262.72					
6455 Delinquent Act 511 Business Privilege Taxes	40,453.60					
6500 Earnings on Investments	48,413.08					
6700 Revenues from LEA Activities	211,693.89					
6832 Federal IDEA Revenue Received as Pass Through	484,032.00					
6910 Rentals	6,660.99					
6920 Contributions and Donations from Private Sources	105,219.88					
6944 Receipts from Other LEAs in Pennsylvania - Education	1,872,016.37					
6961 Transportation Services Provided Other Pennsylvania LEAs	29,880.00					
6970 Services Provided Other Funds	1,421.70					
6991 Refunds of a Prior Year Expenditure	40,250.29					
6992 Energy Efficiency Revenues and Incentives	5,448.60					
6999 Other Revenues Not Specified Above	75,845.73					
<b>6000 Total Revenue from Local Sources</b>	<b>\$18,363,611.63</b>					
<b>7000 Revenue from State Sources</b>						
7111 Basic Education Funding-Formula	13,751,246.71					
7112 Basic Education Funding-Social Security	538,328.90					
7160 Tuition for Orphans Subsidy	13,588.28					
7271 Special Education funds for School-Aged Pupils	1,953,774.29					
7311 Pupil Transportation Subsidy	410,182.96					
7312 Nonpublic and Charter School Pupil Transportation Subsidy	85,085.00					

	Capital Reserve (1431) (32)	Other Capital Projects Fund (39)	Debt Service (40)	Permanent (90)	Total
<b>6000 Revenue from Local Sources</b>					
6111 Current Real Estate Taxes					10,396,144.28
6113 Public Utility Realty Taxes					13,199.11
6114 Payments in Lieu of Current Taxes - State / Local					65,215.52
6120 Current Per Capita Taxes, Section 679					39,595.70
6141 Current Act 511 Per Capita Taxes					39,595.70
6143 Current Act 511 Local Services Taxes					43,600.11
6151 Current Act 511 Earned Income Taxes					1,765,027.01
6152 Current Act 511 Occupation Taxes					537,458.46
6153 Current Act 511 Real Estate Transfer Taxes					194,152.30
6155 Current Act 511 Business Privilege Taxes					905,751.60
6411 Delinquent Real Estate Taxes					1,040,813.11
6420 Delinquent Per Capita Taxes, Section 679					15,279.72
6440 Delinquent Local Enabling Taxes - Flat Rate Assessments					18,110.59
6451 Delinquent Act 511 Earned Income Taxes					30,069.57
6452 Delinquent Act 511 Occupation Taxes					338,262.72
6455 Delinquent Act 511 Business Privilege Taxes					40,453.60
6500 Earnings on Investments	13,495.83				61,908.91
6700 Revenues from LEA Activities					211,693.89
6832 Federal IDEA Revenue Received as Pass Through					484,032.00
6910 Rentals					6,660.99
6920 Contributions and Donations from Private Sources					105,219.88
6944 Receipts from Other LEAs in Pennsylvania - Education					1,872,016.37
6961 Transportation Services Provided Other Pennsylvania LEAs					29,880.00
6970 Services Provided Other Funds					1,421.70
6991 Refunds of a Prior Year Expenditure					40,250.29
6992 Energy Efficiency Revenues and Incentives					5,448.60
6999 Other Revenues Not Specified Above					75,845.73
<b>6000 Total Revenue from Local Sources</b>	<b>\$13,495.83</b>				<b>\$18,377,107.46</b>
<b>7000 Revenue from State Sources</b>					
7111 Basic Education Funding-Formula					13,751,246.71
7112 Basic Education Funding-Social Security					538,328.90
7160 Tuition for Orphans Subsidy					13,588.28
7271 Special Education funds for School-Aged Pupils					1,953,774.29
7311 Pupil Transportation Subsidy					410,182.96
7312 Nonpublic and Charter School Pupil Transportation Subsidy					85,085.00



General Fund (10)   Student Sponsored Activity Fund (21)   Public Purpose Trust (27)   Other Compt. Approved (28)   Athletic / Activity (29)   Capital Reserve (690,1850) (31)

**7000 Revenue from State Sources**

7330 Health Services (Medical, Dental, Nurse, Act 25)	53,371.39				
7340 State Property Tax Reduction Allocation	703,943.51				
7505 Ready to Learn Block Grant	488,569.00				
7810 State Share of Social Security and Medicare Taxes	219,364.62				
7820 State Share of Retirement Contributions	3,633,633.76				

**7000 Total Revenue from State Sources**      **\$21,851,088.42**

**8000 Revenue from Federal Sources**

8514 NCLB, Title I - Improving the Academic Achievement of the Disadvantaged	775,511.21				
8515 NCLB, Title II - Preparing, Training and Recruiting High Quality Teachers and Principals	117,198.59				
8517 NCLB, Title IV - 21st Century Schools	161,710.26				
8749 Other CARES Act Funding	4,792.91				
8810 School-Based Access Medicaid Reimbursement Program (SBAP) Reimbursements (Access)	(4,243.33)				
8820 Medical Assistance Reimbursement for Administrative Claiming (Quarterly) Program	25,253.68				

**8000 Total Revenue from Federal Sources**      **\$1,080,223.32**

**9000 Other Financing Sources**

9400 Sale of or Compensation for Loss of Fixed Assets	482,943.64				
9910 Other Financing Sources Not Listed in the 9000 Series					

**9000 Total Other Financing Sources**      **\$482,943.64**

**Total From All Sources**      **\$41,777,867.01**

	<u>Capital Reserve</u> <u>(1431) (32)</u>	<u>Other Capital</u> <u>Projects Fund (39)</u>	<u>Debt Service (40)</u>	<u>Permanent (90)</u>	<u>Total</u>
<b>7000 Revenue from State Sources</b>					
7330 Health Services (Medical, Dental, Nurse, Act 25)					53,371.39
7340 State Property Tax Reduction Allocation					703,943.51
7505 Ready to Learn Block Grant					488,569.00
7810 State Share of Social Security and Medicare Taxes					219,364.62
7820 State Share of Retirement Contributions					3,633,633.76
<b>7000 Total Revenue from State Sources</b>					<b>\$21,851,088.42</b>
<b>8000 Revenue from Federal Sources</b>					
8514 NCLB, Title I - Improving the Academic Achievement of the Disadvantaged					775,511.21
8515 NCLB, Title II - Preparing, Training and Recruiting High Quality Teachers and Principals					117,198.59
8517 NCLB, Title IV - 21st Century Schools					161,710.26
8749 Other CARES Act Funding					4,792.91
8810 School-Based Access Medicaid Reimbursement Program (SBAP) Reimbursements (Access)					(4,243.33)
8820 Medical Assistance Reimbursement for Administrative Claiming (Quarterly) Program					25,253.68
<b>8000 Total Revenue from Federal Sources</b>					<b>\$1,080,223.32</b>
<b>9000 Other Financing Sources</b>					
9400 Sale of or Compensation for Loss of Fixed Assets					482,943.64
9910 Other Financing Sources Not Listed in the 9000 Series	6.85				6.85
<b>9000 Total Other Financing Sources</b>	<b>\$6.85</b>				<b>\$482,950.49</b>
<b>Total From All Sources</b>	<b>\$13,502.68</b>				<b>\$41,791,369.69</b>

	<u>General Fund (10)</u>	<u>Student Sponsored Activity Fund (21)</u>	<u>Public Purpose Trust (27)</u>	<u>Other Compt. Approved (28)</u>	<u>Athletic / Activity (29)</u>	<u>Capital Reserve (690, 1850) (31)</u>
Revenue from Local Sources	18,363,611.63					
Revenue from State Sources	21,851,088.42					
Revenue from Federal Sources	1,080,223.32					
Other Financing Sources	482,943.64					
<b>Total From All Sources</b>	<b>\$44,777,867.01</b>					

	<u>Capital Reserve (1431)</u> <u>(32)</u>	<u>Other Capital Projects</u> <u>Fund (39)</u>	<u>Debit Service (40)</u>	<u>Permanent (90)</u>	<u>Total</u>
Revenue from Local Sources	13,495.83				18,377,107.46
Revenue from State Sources					21,851,088.42
Revenue from Federal Sources					1,080,223.32
Other Financing Sources	6.85				482,950.49
<b>Total From All Sources</b>	<b>\$13,502.68</b>				<b>\$41,791,369.69</b>

	<u>Total</u>
<b>General Fund (10)</b>	
<b>1000 Instruction</b>	
<b>100 Personnel Services - Salaries</b>	
100 Personnel Services - Salaries	11,193,015.87
<b>Total Personnel Services - Salaries</b>	<b>\$11,193,015.87</b>
<b>200 Personnel Services - Employee Benefits</b>	
210 Group Insurance - Contracted Provider	4,146,619.28
220 Social Security Contributions	848,115.81
230 PSERS Retirement Contributions	3,843,196.07
250 Unemployment Compensation	2,773.84
260 Workers' Compensation	53,156.64
270 Group Insurance - Self-Insurance	(478.09)
280 Other Post-Employment Benefits (OPEB)	218,695.88
<b>Total Personnel Services - Employee Benefits</b>	<b>\$9,112,079.43</b>
<b>300 Purchased Professional and Technical Services</b>	
322 Professional Educational Services - Ius	1,557,333.73
323 Professional Educational Services - Other Educational Agencies	107,697.25
329 Professional Educational Services - Other	228,869.14
330 Other Professional Services	85,171.36
390 Other Purchased Professional and Technical Services	55,162.40
<b>Total Purchased Professional and Technical Services</b>	<b>\$2,034,233.88</b>
<b>400 Purchased Property Services</b>	
430 Repairs and Maintenance Services	7,539.50
440 Rentals	8,833.20
<b>Total Purchased Property Services</b>	<b>\$16,372.70</b>
<b>500 Other Purchased Services</b>	
561 Tuition To Other School Districts Within the State	93,254.70
562 Tuition To Pennsylvania Charter Schools	2,897,422.73
564 Tuition To Career and Technology Centers	777,650.45
568 Tuition To Private Residential Rehabilitative Institutions (PRR) [In-State] and Detention Centers	5,796.85
569 Tuition - Other	47,318.34
<b>Total Other Purchased Services</b>	<b>\$3,821,443.07</b>
<b>600 Supplies</b>	
610 General Supplies	145,715.53
640 Books and Periodicals	184,758.47
650 Supplies & Fees - Technology Related	1,600.00
<b>Total Supplies</b>	<b>\$332,074.00</b>
<b>800 Other Objects</b>	
810 Dues and Fees	4,716.00
890 Miscellaneous Expenditures	165.00
<b>Total Other Objects</b>	<b>\$4,881.00</b>
<b>Total 1000 Instruction</b>	<b>\$26,514,099.95</b>

	Elementary	Secondary	Federal	Total
<b>General Fund (10)</b>				
<b>1100 Regular Programs - Elementary / Secondary</b>				
100 Personnel Services - Salaries	3,283,200.65	3,822,081.95	537,915.66	7,643,198.26
<b>Total Personnel Services - Salaries</b>	<b>\$3,283,200.65</b>	<b>\$3,822,081.95</b>	<b>\$537,915.66</b>	<b>\$7,643,198.26</b>
<b>200 Personnel Services - Employee Benefits</b>				
210 Group Insurance - Contracted Provider	1,247,774.65	1,294,699.40	201,651.12	2,744,125.17
220 Social Security Contributions	253,280.58	290,785.05	36,498.74	580,564.37
230 PSERS Retirement Contributions	1,152,124.48	1,311,285.61	165,961.39	2,629,371.48
250 Unemployment Compensation	1,151.76	1,153.40		2,305.16
260 Workers' Compensation	23,920.49	29,236.15		53,156.64
270 Group Insurance - Self-Insurance	(843.93)	(372.33)		(1,216.26)
280 Other Post-Employment Benefits (OPEB)	89,712.13	89,712.13		179,424.26
<b>Total Personnel Services - Employee Benefits</b>	<b>\$2,767,120.16</b>	<b>\$3,016,499.41</b>	<b>\$404,111.25</b>	<b>\$6,187,730.82</b>
<b>300 Purchased Professional and Technical Services</b>				
322 Professional Educational Services - Ius		45,970.00	52,113.00	98,083.00
323 Professional Educational Services - Other Educational Agencies	53,848.62	53,848.63		107,697.25
329 Professional Educational Services - Other	109,382.03	119,487.11		228,869.14
390 Other Purchased Professional and Technical Services			55,162.40	55,162.40
<b>Total Purchased Professional and Technical Services</b>	<b>\$163,230.65</b>	<b>\$219,305.74</b>	<b>\$107,275.40</b>	<b>\$489,811.79</b>
<b>400 Purchased Property Services</b>				
430 Repairs and Maintenance Services	292.00	7,247.50		7,539.50
440 Rentals	2,426.38	6,060.67		8,487.05
<b>Total Purchased Property Services</b>	<b>\$2,718.38</b>	<b>\$13,308.17</b>		<b>\$16,026.55</b>
<b>500 Other Purchased Services</b>				
562 Tuition To Pennsylvania Charter Schools	687,768.77	687,768.77		1,375,537.54
568 Tuition To Private Residential Rehabilitative Institutions (PRRI) [In-State] and Detention Centers	2,898.42	2,898.43		5,796.85
<b>Total Other Purchased Services</b>	<b>\$690,667.19</b>	<b>\$690,667.20</b>		<b>\$1,381,334.39</b>
<b>600 Supplies</b>				
610 General Supplies	59,111.00	59,626.92	5,106.79	123,844.71
640 Books and Periodicals	111,589.92	35,871.71		147,261.63
650 Supplies & Fees - Technology Related	400.00	1,200.00		1,600.00
<b>Total Supplies</b>	<b>\$171,100.92</b>	<b>\$96,498.63</b>	<b>\$5,106.79</b>	<b>\$272,706.34</b>
<b>800 Other Objects</b>				
810 Dues and Fees	210.00	4,000.00		4,210.00
890 Miscellaneous Expenditures	82.50	82.50		165.00
<b>Total Other Objects</b>	<b>\$292.50</b>	<b>\$4,082.50</b>		<b>\$4,375.00</b>
<b>Total 1100 Regular Programs - Elementary / Secondary</b>	<b>\$7,076,330.45</b>	<b>\$7,862,443.60</b>	<b>\$1,054,409.10</b>	<b>\$15,995,183.15</b>

	Elementary	Secondary	Federal	Total
<b>General Fund (10)</b>				
<b>1110 Regular Programs</b>				
<b>100 Personnel Services - Salaries</b>				
100 Personnel Services - Salaries	3,283,200.65	3,822,081.95		7,105,282.60
<b>Total Personnel Services - Salaries</b>	<b>\$3,283,200.65</b>	<b>\$3,822,081.95</b>		<b>\$7,105,282.60</b>
<b>200 Personnel Services - Employee Benefits</b>				
210 Group Insurance - Contracted Provider	1,247,774.65	1,294,699.40		2,542,474.05
220 Social Security Contributions	253,280.58	290,785.05		544,065.63
230 PSERS Retirement Contributions	1,152,124.48	1,311,285.61		2,463,410.09
250 Unemployment Compensation	1,151.76	1,153.40		2,305.16
260 Workers' Compensation	23,920.49	29,236.15		53,156.64
270 Group Insurance - Self-Insurance	(843.93)	(372.33)		(1,216.26)
280 Other Post-Employment Benefits (OPEB)	89,712.13	89,712.13		179,424.26
<b>Total Personnel Services - Employee Benefits</b>	<b>\$2,767,120.16</b>	<b>\$3,016,499.41</b>		<b>\$5,783,619.57</b>
<b>300 Purchased Professional and Technical Services</b>				
322 Professional Educational Services - Ius		45,970.00	52,113.00	98,083.00
323 Professional Educational Services - Other Educational Agencies	53,848.62	53,848.63		107,697.25
329 Professional Educational Services - Other	109,382.03	119,487.11		228,869.14
<b>Total Purchased Professional and Technical Services</b>	<b>\$163,230.65</b>	<b>\$219,305.74</b>	<b>\$52,113.00</b>	<b>\$434,649.39</b>
<b>400 Purchased Property Services</b>				
430 Repairs and Maintenance Services	292.00	7,247.50		7,539.50
440 Rentals	2,426.38	6,060.67		8,487.05
<b>Total Purchased Property Services</b>	<b>\$2,718.38</b>	<b>\$13,308.17</b>		<b>\$16,026.55</b>
<b>500 Other Purchased Services</b>				
562 Tuition To Pennsylvania Charter Schools	687,768.77	687,768.77		1,375,537.54
568 Tuition To Private Residential Rehabilitative Institutions (PRRI) [In-State] and Detention Centers	2,898.42	2,898.43		5,796.85
<b>Total Other Purchased Services</b>	<b>\$690,667.19</b>	<b>\$690,667.20</b>		<b>\$1,381,334.39</b>
<b>600 Supplies</b>				
610 General Supplies	59,111.00	59,626.92		118,737.92
640 Books and Periodicals	111,589.92	35,671.71		147,261.63
650 Supplies & Fees - Technology Related	400.00	1,200.00		1,600.00
<b>Total Supplies</b>	<b>\$171,100.92</b>	<b>\$96,498.63</b>		<b>\$267,599.55</b>
<b>800 Other Objects</b>				
810 Dues and Fees	210.00	4,000.00		4,210.00
890 Miscellaneous Expenditures	82.50	82.50		165.00
<b>Total Other Objects</b>	<b>\$292.50</b>	<b>\$4,082.50</b>		<b>\$4,375.00</b>
<b>Total 1110 Regular Programs</b>	<b>\$7,078,330.45</b>	<b>\$7,862,443.60</b>	<b>\$52,113.00</b>	<b>\$14,992,887.05</b>

	Elementary	Secondary	Federal	Total
<b>General Fund (10)</b>				
<b>1190 Federally-Funded Regular Programs</b>				
100 Personnel Services – Salaries			537,915.66	537,915.66
100 Personnel Services – Salaries			537,915.66	537,915.66
<b>Total Personnel Services – Salaries</b>			<b>\$537,915.66</b>	<b>\$537,915.66</b>
<b>200 Personnel Services – Employee Benefits</b>				
210 Group Insurance – Contracted Provider			201,651.12	201,651.12
220 Social Security Contributions			36,498.74	36,498.74
230 PSERS Retirement Contributions			165,961.39	165,961.39
<b>Total Personnel Services – Employee Benefits</b>			<b>\$404,111.25</b>	<b>\$404,111.25</b>
<b>300 Purchased Professional and Technical Services</b>				
390 Other Purchased Professional and Technical Services			55,162.40	55,162.40
<b>Total Purchased Professional and Technical Services</b>			<b>\$55,162.40</b>	<b>\$55,162.40</b>
<b>600 Supplies</b>				
610 General Supplies			5,106.79	5,106.79
<b>Total Supplies</b>			<b>\$5,106.79</b>	<b>\$5,106.79</b>
<b>Total 1190 Federally-Funded Regular Programs</b>			<b>\$1,002,296.10</b>	<b>\$1,002,296.10</b>



	Elementary	Secondary	Federal	Total
<b>General Fund (10)</b>				
<b>1200 Special Programs - Elementary / Secondary</b>				
<b>100 Personnel Services - Salaries</b>				
100 Personnel Services - Salaries	1,754,228.17	1,452,409.80		3,206,637.97
<b>Total Personnel Services - Salaries</b>	<b>\$1,754,228.17</b>	<b>\$1,452,409.80</b>		<b>\$3,206,637.97</b>
<b>200 Personnel Services - Employee Benefits</b>				
210 Group Insurance - Contracted Provider	675,870.44	580,810.04		1,256,680.48
220 Social Security Contributions	132,285.52	109,397.00		241,682.52
230 PSERS Retirement Contributions	599,190.04	496,998.26		1,096,148.30
250 Unemployment Compensation	124.60	344.08		468.68
270 Group Insurance - Self-Insurance	6,272.67	(5,534.50)		738.17
280 Other Post-Employment Benefits (OPEB)	15,571.60	15,100.00		30,671.60
<b>Total Personnel Services - Employee Benefits</b>	<b>\$1,429,314.87</b>	<b>\$1,197,074.88</b>		<b>\$2,626,389.75</b>
<b>300 Purchased Professional and Technical Services</b>				
322 Professional Educational Services - Ius	252,712.01	534,649.19	468,102.00	1,255,463.20
330 Other Professional Services	50,971.27	34,200.09		85,171.36
<b>Total Purchased Professional and Technical Services</b>	<b>\$303,683.28</b>	<b>\$568,849.28</b>	<b>\$468,102.00</b>	<b>\$1,340,634.56</b>
<b>500 Other Purchased Services</b>				
561 Tuition To Other School Districts Within the State	582.00	12,289.54		12,871.54
562 Tuition To Pennsylvania Charter Schools	760,942.60	760,942.59		1,521,885.19
569 Tuition - Other	680.00	35,609.12		36,289.12
<b>Total Other Purchased Services</b>	<b>\$762,204.60</b>	<b>\$898,841.25</b>		<b>\$1,571,045.85</b>
<b>600 Supplies</b>				
610 General Supplies	8,902.71	12,811.51		21,714.22
640 Books and Periodicals	14,061.11	6,358.23		20,419.34
<b>Total Supplies</b>	<b>\$22,963.82</b>	<b>\$19,169.74</b>		<b>\$42,133.56</b>
<b>800 Other Objects</b>				
810 Dues and Fees	253.00	253.00		506.00
<b>Total Other Objects</b>	<b>\$253.00</b>	<b>\$253.00</b>		<b>\$506.00</b>
<b>Total 1200 Special Programs - Elementary / Secondary</b>	<b>\$4,272,647.74</b>	<b>\$4,046,597.95</b>	<b>\$468,102.00</b>	<b>\$8,787,347.69</b>

	<u>Elementary</u>	<u>Secondary</u>	<u>Federal</u>	<u>Total</u>
<b>General Fund (10)</b>				
<b>1210 Life Skills Support</b>				
<b>100 Personnel Services - Salaries</b>				
100 Personnel Services - Salaries	216,964.95	324,732.48		541,697.43
<b>Total Personnel Services - Salaries</b>	<b>\$216,964.95</b>	<b>\$324,732.48</b>		<b>\$541,697.43</b>
<b>200 Personnel Services - Employee Benefits</b>				
210 Group Insurance - Contracted Provider	88,321.14	81,358.64		169,679.78
220 Social Security Contributions	16,478.30	24,666.65		41,144.95
230 PSERS Retirement Contributions	74,397.23	111,314.10		185,711.33
250 Unemployment Compensation		344.08		344.08
270 Group Insurance - Self-Insurance	11,807.19			11,807.19
280 Other Post-Employment Benefits (OPEB)	471.60			471.60
<b>Total Personnel Services - Employee Benefits</b>	<b>\$191,475.46</b>	<b>\$217,683.47</b>		<b>\$409,158.93</b>
<b>500 Other Purchased Services</b>				
562 Tuition To Pennsylvania Charter Schools	760,942.60	760,942.59		1,521,885.19
<b>Total Other Purchased Services</b>	<b>\$760,942.60</b>	<b>\$760,942.59</b>		<b>\$1,521,885.19</b>
<b>600 Supplies</b>				
610 General Supplies	396.20	1,550.00		1,946.20
640 Books and Periodicals	6,982.18	2,612.43		9,594.61
<b>Total Supplies</b>	<b>\$7,378.38</b>	<b>\$4,162.43</b>		<b>\$11,540.81</b>
<b>Total 1210 Life Skills Support</b>	<b>\$1,176,761.39</b>	<b>\$1,307,520.97</b>		<b>\$2,484,282.36</b>

	Elementary	Secondary	Federal	Total
<b>General Fund (10)</b>				
<b>1220 Sensory Support</b>				
<b>100 Personnel Services - Salaries</b>				
100 Personnel Services - Salaries	170,216.17	48,961.33		219,177.50
<b>Total Personnel Services - Salaries</b>	<b>\$170,216.17</b>	<b>\$48,961.33</b>		<b>\$219,177.50</b>
<b>200 Personnel Services - Employee Benefits</b>				
210 Group Insurance - Contracted Provider	59,755.91	24,620.65		84,376.56
220 Social Security Contributions	12,844.74	3,668.93		16,513.67
230 PSERS Retirement Contributions	58,367.06	16,788.83		75,155.89
280 Other Post-Employment Benefits (OPEB)	1,600.00	1,600.00		3,200.00
<b>Total Personnel Services - Employee Benefits</b>	<b>\$132,567.71</b>	<b>\$46,678.41</b>		<b>\$179,246.12</b>
<b>300 Purchased Professional and Technical Services</b>				
330 Other Professional Services	18,247.00	18,147.00		36,394.00
<b>Total Purchased Professional and Technical Services</b>	<b>\$18,247.00</b>	<b>\$18,147.00</b>		<b>\$36,394.00</b>
<b>600 Supplies</b>				
610 General Supplies	91.16	91.16		182.32
<b>Total Supplies</b>	<b>\$91.16</b>	<b>\$91.16</b>		<b>\$182.32</b>
<b>800 Other Objects</b>				
810 Dues and Fees	253.00	253.00		506.00
<b>Total Other Objects</b>	<b>\$253.00</b>	<b>\$253.00</b>		<b>\$506.00</b>
<b>Total 1220 Sensory Support</b>	<b>\$321,375.04</b>	<b>\$114,130.90</b>		<b>\$435,505.94</b>

	<u>Elementary</u>	<u>Secondary</u>	<u>Federal</u>	<u>Total</u>
<b>General Fund (10)</b>				
<b>1230 Emotional Support</b>				
<b>100 Personnel Services - Salaries</b>				
100 Personnel Services - Salaries	425,536.66	202,286.43		627,823.09
<b>Total Personnel Services - Salaries</b>	<b>\$425,536.66</b>	<b>\$202,286.43</b>		<b>\$627,823.09</b>
<b>200 Personnel Services - Employee Benefits</b>				
210 Group Insurance - Contracted Provider	204,734.66	59,349.16		264,083.82
220 Social Security Contributions	32,147.85	15,335.60		47,483.45
230 PSERS Retirement Contributions	144,103.18	69,104.16		213,207.34
270 Group Insurance - Self-Insurance	(5,534.52)	(5,278.42)		(10,812.94)
<b>Total Personnel Services - Employee Benefits</b>	<b>\$375,451.17</b>	<b>\$138,510.50</b>		<b>\$513,961.67</b>
<b>300 Purchased Professional and Technical Services</b>				
330 Other Professional Services	3,798.33	3,798.33		7,596.66
<b>Total Purchased Professional and Technical Services</b>	<b>\$3,798.33</b>	<b>\$3,798.33</b>		<b>\$7,596.66</b>
<b>600 Supplies</b>				
610 General Supplies	922.53	1,077.53		2,000.06
640 Books and Periodicals	1,703.94	1,241.02		2,944.96
<b>Total Supplies</b>	<b>\$2,626.47</b>	<b>\$2,318.55</b>		<b>\$4,945.02</b>
<b>Total 1230 Emotional Support</b>	<b>\$807,412.63</b>	<b>\$346,913.81</b>		<b>\$1,154,326.44</b>

	Elementary	Secondary	Federal	Total
<b>General Fund (10)</b>				
<b>1240 Academic Support</b>				
<b>100 Personnel Services - Salaries</b>				
100 Personnel Services - Salaries	828,705.89	778,881.46		1,607,587.35
<b>Total Personnel Services - Salaries</b>	<b>\$828,705.89</b>	<b>\$778,881.46</b>		<b>\$1,607,587.35</b>
<b>200 Personnel Services - Employee Benefits</b>				
210 Group Insurance - Contracted Provider	282,817.39	375,240.25		658,057.64
220 Social Security Contributions	62,404.53	58,504.33		120,908.86
230 PSERS Retirement Contributions	283,949.12	266,753.72		550,702.84
250 Unemployment Compensation	124.60			124.60
270 Group Insurance - Self-Insurance		(256.08)		(256.08)
280 Other Post-Employment Benefits (OPEB)	7,000.00	7,000.00		14,000.00
<b>Total Personnel Services - Employee Benefits</b>	<b>\$636,295.64</b>	<b>\$707,242.22</b>		<b>\$1,343,537.86</b>
<b>600 Supplies</b>				
610 General Supplies	7,229.40	9,829.40		17,058.80
640 Books and Periodicals	3,879.99	1,009.78		4,889.77
<b>Total Supplies</b>	<b>\$11,109.39</b>	<b>\$10,839.18</b>		<b>\$21,948.57</b>
<b>Total 1240 Academic Support</b>	<b>\$1,476,110.92</b>	<b>\$1,496,962.86</b>		<b>\$2,973,073.78</b>

	<u>Elementary</u>	<u>Secondary</u>	<u>Federal</u>	<u>Total</u>
<b>General Fund (10)</b>				
<b>1241 Learning Support - Public</b>				
<b>100 Personnel Services - Salaries</b>				
100 Personnel Services - Salaries	807,895.15	756,945.15		1,564,840.30
<b>Total Personnel Services - Salaries</b>	<b>\$807,895.15</b>	<b>\$756,945.15</b>		<b>\$1,564,840.30</b>
<b>200 Personnel Services - Employee Benefits</b>				
210 Group Insurance - Contracted Provider	272,996.05	365,418.91		638,414.96
220 Social Security Contributions	60,835.86	56,852.20		117,688.06
230 PSERS Retirement Contributions	276,813.15	259,231.88		536,045.03
250 Unemployment Compensation	124.60			124.60
270 Group Insurance - Self-Insurance		(256.08)		(256.08)
280 Other Post-Employment Benefits (OPEB)	7,000.00	7,000.00		14,000.00
<b>Total Personnel Services - Employee Benefits</b>	<b>\$617,769.66</b>	<b>\$688,246.91</b>		<b>\$1,306,016.57</b>
<b>600 Supplies</b>				
610 General Supplies	7,229.40	9,829.40		17,058.80
640 Books and Periodicals	3,879.99	1,009.78		4,889.77
<b>Total Supplies</b>	<b>\$11,109.39</b>	<b>\$10,839.18</b>		<b>\$21,948.57</b>
<b>Total 1241 Learning Support - Public</b>	<b>\$1,436,774.20</b>	<b>\$1,456,031.24</b>		<b>\$2,892,805.44</b>

	Elementary	Secondary	Federal	Total
General Fund (10)				
1243 Gifted Support				
100 Personnel Services - Salaries	20,810.74	21,936.31		42,747.05
<b>Total Personnel Services - Salaries</b>	<b>\$20,810.74</b>	<b>\$21,936.31</b>		<b>\$42,747.05</b>
200 Personnel Services - Employee Benefits				
210 Group Insurance - Contracted Provider	9,821.34	9,821.34		19,642.68
220 Social Security Contributions	1,568.67	1,652.13		3,220.80
230 PSERS Retirement Contributions	7,135.97	7,521.84		14,657.81
<b>Total Personnel Services - Employee Benefits</b>	<b>\$18,525.98</b>	<b>\$18,995.31</b>		<b>\$37,521.29</b>
<b>Total 1243 Gifted Support</b>	<b>\$39,336.72</b>	<b>\$40,931.62</b>		<b>\$80,268.34</b>

LEA : 129546103 Pottsville Area SD

Printed 11/19/2020 9:35:58 PM

	<u>Elementary</u>	<u>Secondary</u>	<u>Federal</u>	<u>Total</u>
<b>General Fund (10)</b>				
<b>1260 Physical Support</b>				
300 Purchased Professional and Technical Services				
330 Other Professional Services	16,671.18			16,671.18
<b>Total Purchased Professional and Technical Services</b>	<b>\$16,671.18</b>			<b>\$16,671.18</b>
<b>Total 1260 Physical Support</b>	<b>\$16,671.18</b>			<b>\$16,671.18</b>



General Fund (10)

1280 Early Intervention Support

300 Purchased Professional and Technical Services

322 Professional Educational Services - Ius

Total Purchased Professional and Technical Services

Total 1280 Early Intervention Support

	<u>Elementary</u>	<u>Secondary</u>	<u>Federal</u>	<u>Total</u>
	11,499.98			11,499.98
	\$11,499.98			\$11,499.98
	\$11,499.98			\$11,499.98

	Elementary	Secondary	Federal	Total
<b>General Fund (10)</b>				
<b>1290 Special Programs - Other Support</b>				
100 Personnel Services - Salaries	112,804.50	97,548.10		210,352.60
<b>Total Personnel Services - Salaries</b>	<b>\$112,804.50</b>	<b>\$97,548.10</b>		<b>\$210,352.60</b>
<b>200 Personnel Services - Employee Benefits</b>				
210 Group Insurance - Contracted Provider	40,241.34	40,241.34		80,482.68
220 Social Security Contributions	8,410.10	7,221.49		15,631.59
230 PSERS Retirement Contributions	38,373.45	32,997.45		71,370.90
280 Other Post-Employment Benefits (OPEB)	6,500.00	6,500.00		13,000.00
<b>Total Personnel Services - Employee Benefits</b>	<b>\$93,524.89</b>	<b>\$86,960.28</b>		<b>\$180,485.17</b>
<b>300 Purchased Professional and Technical Services</b>				
322 Professional Educational Services - Ius	241,212.03	534,649.19	468,102.00	1,243,963.22
330 Other Professional Services	12,254.76	12,254.76		24,509.52
<b>Total Purchased Professional and Technical Services</b>	<b>\$253,466.79</b>	<b>\$546,903.95</b>	<b>\$468,102.00</b>	<b>\$1,268,472.74</b>
<b>500 Other Purchased Services</b>				
561 Tuition To Other School Districts Within the State	582.00	12,289.54		12,871.54
569 Tuition - Other	680.00	35,609.12		36,289.12
<b>Total Other Purchased Services</b>	<b>\$1,262.00</b>	<b>\$47,898.66</b>		<b>\$49,160.66</b>
<b>600 Supplies</b>				
610 General Supplies	263.42	263.42		526.84
640 Books and Periodicals	1,495.00	1,495.00		2,990.00
<b>Total Supplies</b>	<b>\$1,758.42</b>	<b>\$1,758.42</b>		<b>\$3,516.84</b>
<b>Total 1290 Special Programs - Other Support</b>	<b>\$462,816.60</b>	<b>\$781,069.41</b>	<b>\$468,102.00</b>	<b>\$1,711,988.01</b>

	<u>Elementary</u>	<u>Secondary</u>	<u>Federal</u>	<u>Total</u>
<b>General Fund (10)</b>				
<b>1300 Vocational Education</b>				
<b>100 Personnel Services - Salaries</b>				
100 Personnel Services - Salaries		235,144.08		235,144.08
<b>Total Personnel Services - Salaries</b>		<b>\$235,144.08</b>		<b>\$235,144.08</b>
<b>200 Personnel Services - Employee Benefits</b>				
210 Group Insurance - Contracted Provider		74,754.48		74,754.48
220 Social Security Contributions		17,793.51		17,793.51
230 PSERS Retirement Contributions		80,630.79		80,630.79
280 Other Post-Employment Benefits (OPEB)		8,600.02		8,600.02
<b>Total Personnel Services - Employee Benefits</b>		<b>\$181,778.80</b>		<b>\$181,778.80</b>
<b>500 Other Purchased Services</b>				
564 Tuition To Career and Technology Centers		777,650.45		777,650.45
<b>Total Other Purchased Services</b>		<b>\$777,650.45</b>		<b>\$777,650.45</b>
<b>600 Supplies</b>				
610 General Supplies		156.60		156.60
640 Books and Periodicals		17,077.50		17,077.50
<b>Total Supplies</b>		<b>\$17,234.10</b>		<b>\$17,234.10</b>
<b>Total 1300 Vocational Education</b>		<b>\$1,211,807.43</b>		<b>\$1,211,807.43</b>

	<u>Elementary</u>	<u>Secondary</u>	<u>Federal</u>	<u>Total</u>
<b>General Fund (10)</b>				
<b>1400 Other Instructional Programs - Elementary / Secondary</b>				
<b>100 Personnel Services - Salaries</b>				
100 Personnel Services - Salaries	45,603.83	62,431.73		108,035.56
<b>Total Personnel Services - Salaries</b>	<b>\$45,603.83</b>	<b>\$62,431.73</b>		<b>\$108,035.56</b>
<b>200 Personnel Services - Employee Benefits</b>				
210 Group Insurance - Contracted Provider	26,169.67	44,889.48		71,059.15
220 Social Security Contributions	3,418.22	4,657.19		8,075.41
230 PSERS Retirement Contributions	15,637.58	21,407.92		37,045.50
<b>Total Personnel Services - Employee Benefits</b>	<b>\$45,225.47</b>	<b>\$70,954.59</b>		<b>\$116,180.06</b>
<b>300 Purchased Professional and Technical Services</b>				
322 Professional Educational Services - lus	15,750.00	146,745.00		162,495.00
<b>Total Purchased Professional and Technical Services</b>	<b>\$15,750.00</b>	<b>\$146,745.00</b>		<b>\$162,495.00</b>
<b>400 Purchased Property Services</b>				
440 Rentals	173.08	173.07		346.15
<b>Total Purchased Property Services</b>	<b>\$173.08</b>	<b>\$173.07</b>		<b>\$346.15</b>
<b>500 Other Purchased Services</b>				
561 Tuition To Other School Districts Within the State	38,792.57	41,590.59		80,383.16
569 Tuition - Other		11,029.22		11,029.22
<b>Total Other Purchased Services</b>	<b>\$38,792.57</b>	<b>\$52,619.81</b>		<b>\$91,412.38</b>
<b>Total 1400 Other Instructional Programs - Elementary / Secondary</b>	<b>\$145,544.95</b>	<b>\$332,924.20</b>		<b>\$478,469.15</b>

	<u>Elementary</u>	<u>Secondary</u>	<u>Federal</u>	<u>Total</u>
<b>General Fund (10)</b>				
<b>1430 Homebound Instruction</b>				
<b>100 <u>Personnel Services - Salaries</u></b>				
100 Personnel Services - Salaries	2,160.00	528.00		2,688.00
<b>Total Personnel Services - Salaries</b>	<b>\$2,160.00</b>	<b>\$528.00</b>		<b>\$2,688.00</b>
<b>200 <u>Personnel Services - Employee Benefits</u></b>				
220 Social Security Contributions	164.46	39.85		204.31
230 PSERS Retirement Contributions	740.67	181.04		921.71
<b>Total Personnel Services - Employee Benefits</b>	<b>\$905.13</b>	<b>\$220.89</b>		<b>\$1,126.02</b>
<b>Total 1430 Homebound Instruction</b>	<b>\$3,065.13</b>	<b>\$748.89</b>		<b>\$3,814.02</b>

	<u>Elementary</u>	<u>Secondary</u>	<u>Federal</u>	<u>Total</u>
<b>General Fund (10)</b>				
<b>1440 Alternative Regular Education Programs</b>				
<b>100 Personnel Services - Salaries</b>				
100 Personnel Services - Salaries	33,638.50	33,638.50		67,277.00
<b>Total Personnel Services - Salaries</b>	<b>\$33,638.50</b>	<b>\$33,638.50</b>		<b>\$67,277.00</b>
<b>200 Personnel Services - Employee Benefits</b>				
210 Group Insurance - Contracted Provider	13,983.24	13,983.24		27,966.48
220 Social Security Contributions	2,538.51	2,538.51		5,077.02
230 PSERS Retirement Contributions	11,534.63	11,534.63		23,069.26
<b>Total Personnel Services - Employee Benefits</b>	<b>\$28,056.38</b>	<b>\$28,056.38</b>		<b>\$56,112.76</b>
<b>300 Purchased Professional and Technical Services</b>				
322 Professional Educational Services - Ius	15,750.00	146,745.00		162,495.00
<b>Total Purchased Professional and Technical Services</b>	<b>\$15,750.00</b>	<b>\$146,745.00</b>		<b>\$162,495.00</b>
<b>400 Purchased Property Services</b>				
440 Rentals	173.08	173.07		346.15
<b>Total Purchased Property Services</b>	<b>\$173.08</b>	<b>\$173.07</b>		<b>\$346.15</b>
<b>500 Other Purchased Services</b>				
561 Tuition To Other School Districts Within the State	38,792.57	41,590.59		80,383.16
569 Tuition - Other		11,029.22		11,029.22
<b>Total Other Purchased Services</b>	<b>\$38,792.57</b>	<b>\$52,619.81</b>		<b>\$91,412.38</b>
<b>Total 1440 Alternative Regular Education Programs</b>	<b>\$116,410.53</b>	<b>\$261,232.76</b>		<b>\$377,643.29</b>

	<u>Elementary</u>	<u>Secondary</u>	<u>Federal</u>	<u>Total</u>
<b>General Fund (10)</b>				
<b>1441 Adjudicated / Court-Placed Programs</b>				
<b>100 Personnel Services - Salaries</b>				
100 Personnel Services - Salaries	33,638.50	33,638.50		67,277.00
<b>Total Personnel Services - Salaries</b>	<b>\$33,638.50</b>	<b>\$33,638.50</b>		<b>\$67,277.00</b>
<b>200 Personnel Services - Employee Benefits</b>				
210 Group Insurance - Contracted Provider	13,983.24	13,983.24		27,966.48
220 Social Security Contributions	2,538.51	2,538.51		5,077.02
230 PSERS Retirement Contributions	11,534.63	11,534.63		23,069.26
<b>Total Personnel Services - Employee Benefits</b>	<b>\$28,056.38</b>	<b>\$28,056.38</b>		<b>\$56,112.76</b>
<b>400 Purchased Property Services</b>				
440 Rentals	173.08	173.07		346.15
<b>Total Purchased Property Services</b>	<b>\$173.08</b>	<b>\$173.07</b>		<b>\$346.15</b>
<b>500 Other Purchased Services</b>				
561 Tuition To Other School Districts Within the State	38,792.57	41,590.59		80,383.16
<b>Total Other Purchased Services</b>	<b>\$38,792.57</b>	<b>\$41,590.59</b>		<b>\$80,383.16</b>
<b>Total 1441 Adjudicated / Court-Placed Programs</b>	<b>\$100,660.53</b>	<b>\$103,458.54</b>		<b>\$204,119.07</b>

	<u>Elementary</u>	<u>Secondary</u>	<u>Federal</u>	<u>Total</u>
<b>General Fund (10)</b>				
<b>1442 Alternative Education Programs</b>				
300 Purchased Professional and Technical Services				
322 Professional Educational Services - lus	15,750.00	146,745.00		162,495.00
<b>Total Purchased Professional and Technical Services</b>	<b>\$15,750.00</b>	<b>\$146,745.00</b>		<b>\$162,495.00</b>
<b>500 Other Purchased Services</b>				
569 Tuition - Other		11,029.22		11,029.22
<b>Total Other Purchased Services</b>		<b>\$11,029.22</b>		<b>\$11,029.22</b>
<b>Total 1442 Alternative Education Programs</b>	<b>\$15,750.00</b>	<b>\$157,774.22</b>		<b>\$173,524.22</b>



	<u>Elementary</u>	<u>Secondary</u>	<u>Federal</u>	<u>Total</u>
<b>General Fund (10)</b>				
<b>1490 Additional Other Instructional Programs</b>				
<b>100 Personnel Services - Salaries</b>				
100 Personnel Services - Salaries	9,805.33	28,265.23		38,070.56
<b>Total Personnel Services - Salaries</b>	<b>\$9,805.33</b>	<b>\$28,265.23</b>		<b>\$38,070.56</b>
<b>200 Personnel Services - Employee Benefits</b>				
210 Group Insurance - Contracted Provider	12,186.43	30,906.24		43,092.67
220 Social Security Contributions	715.25	2,078.83		2,794.08
230 PSERS Retirement Contributions	3,362.28	9,692.25		13,054.53
<b>Total Personnel Services - Employee Benefits</b>	<b>\$16,263.96</b>	<b>\$42,677.32</b>		<b>\$58,941.28</b>
<b>Total 1490 Additional Other Instructional Programs</b>	<b>\$26,069.29</b>	<b>\$70,942.55</b>		<b>\$97,011.84</b>

	Elementary	Secondary	Federal	Total
<b>General Fund (10)</b>				
1500 Nonpublic School Programs				
300 Purchased Professional and Technical Services			41,292.53	41,292.53
322 Professional Educational Services - lus			\$41,292.53	\$41,292.53
<b>Total Purchased Professional and Technical Services</b>			<b>\$41,292.53</b>	<b>\$41,292.53</b>
<b>Total 1500 Nonpublic School Programs</b>			<b>\$41,292.53</b>	<b>\$41,292.53</b>

	<u>Total</u>
<b>General Fund (10)</b>	
<b>2000 Support Services</b>	
<b>100 Personnel Services - Salaries</b>	
100 Personnel Services - Salaries	4,520,402.96
<b>Total Personnel Services - Salaries</b>	<b>\$4,520,402.96</b>
<b>200 Personnel Services - Employee Benefits</b>	
210 Group Insurance - Contracted Provider	1,773,181.41
220 Social Security Contributions	338,656.60
230 PSERS Retirement Contributions	1,522,743.97
240 Tuition Reimbursement	99,972.00
250 Unemployment Compensation	1,355.92
260 Workers' Compensation	29,900.60
270 Group Insurance - Self-Insurance	1,685.58
280 Other Post-Employment Benefits (OPEB)	56,316.68
291 Other Retirement Plans	22,400.04
<b>Total Personnel Services - Employee Benefits</b>	<b>\$3,846,212.80</b>
<b>300 Purchased Professional and Technical Services</b>	
322 Professional Educational Services - Ius	8,662.28
330 Other Professional Services	505,294.25
340 Technical Services	26,530.00
350 Security / Safety Services	2,036.00
360 Employee Training and Development Services	2,905.00
<b>Total Purchased Professional and Technical Services</b>	<b>\$545,427.53</b>
<b>400 Purchased Property Services</b>	
410 Cleaning Services	16,168.70
420 Utility Services	106,595.19
430 Repairs and Maintenance Services	589,458.43
440 Rentals	582,656.66
460 Extermination Services	12,136.29
<b>Total Purchased Property Services</b>	<b>\$1,307,015.27</b>
<b>500 Other Purchased Services</b>	
516 Student Transportation Services From the IU	43,034.45
520 Insurance - General	408.00
521 Fire Insurance	158.60
522 Automotive Liability Insurance	30,617.12
523 General Property and Liability Insurance	97,790.88
530 Communications	92,136.42
549 Other Advertising/Public Relations	4,316.32
550 Printing and Binding	12,292.10
580 Travel	5,622.05
<b>Total Other Purchased Services</b>	<b>\$286,375.94</b>
<b>600 Supplies</b>	
610 General Supplies	309,251.43
620 Energy	596,719.79
630 Food	814.86
640 Books and Periodicals	27,383.98

	<u>Total</u>
<b>General Fund (10)</b>	
<b>2000 Support Services</b>	
<b>600 Supplies</b>	
650 Supplies & Fees - Technology Related	116,659.66
<b>Total Supplies</b>	<b>\$1,050,829.72</b>
<b>700 Property</b>	
768 Capitalized Technology Software - Replacement	234,463.81
<b>Total Property</b>	<b>\$234,463.81</b>
<b>800 Other Objects</b>	
810 Dues and Fees	21,098.52
<b>Total Other Objects</b>	<b>\$21,098.52</b>
<b>Total 2000 Support Services</b>	<b>\$11,811,826.55</b>

	Elementary	Secondary	Federal	Total
<b>General Fund (10)</b>				
<b>2100 Support Services - Students</b>				
100 Personnel Services - Salaries				
100 Personnel Services - Salaries	103,535.54	303,624.80		655,846.27
<b>Total Personnel Services - Salaries</b>	<b>\$103,535.54</b>	<b>\$303,624.80</b>		<b>\$655,846.27</b>
<b>200 Personnel Services - Employee Benefits</b>				
210 Group Insurance - Contracted Provider	12,494.38	123,856.98		232,311.28
220 Social Security Contributions	7,880.23	22,652.95		48,747.25
230 PSERS Retirement Contributions	34,216.51	104,113.08		221,889.23
270 Group Insurance - Self-Insurance	37.89	37.89		75.78
280 Other Post-Employment Benefits (OPEB)	9,750.00	9,750.00		26,250.00
<b>Total Personnel Services - Employee Benefits</b>	<b>\$64,379.01</b>	<b>\$260,410.90</b>		<b>\$529,273.54</b>
<b>300 Purchased Professional and Technical Services</b>				
330 Other Professional Services	8,366.00	8,366.00		16,732.00
<b>Total Purchased Professional and Technical Services</b>	<b>\$8,366.00</b>	<b>\$8,366.00</b>		<b>\$16,732.00</b>
<b>400 Purchased Property Services</b>				
430 Repairs and Maintenance Services		80.00		1,740.00
440 Rentals		3,634.29		5,343.91
<b>Total Purchased Property Services</b>		<b>\$3,714.29</b>		<b>\$7,083.91</b>
<b>500 Other Purchased Services</b>				
530 Communications		58.50		58.50
550 Printing and Binding				987.26
580 Travel				90.48
<b>Total Other Purchased Services</b>		<b>\$58.50</b>		<b>\$1,136.24</b>
<b>600 Supplies</b>				
610 General Supplies	1,868.21			2,964.44
640 Books and Periodicals	312.89	1,096.23		332.89
650 Supplies & Fees - Technology Related		20.00		1,138.52
<b>Total Supplies</b>	<b>\$2,181.10</b>	<b>\$2,254.75</b>		<b>\$4,435.85</b>
<b>800 Other Objects</b>				
810 Dues and Fees				792.00
<b>Total Other Objects</b>				<b>\$792.00</b>
<b>Total 2100 Support Services - Students</b>	<b>\$178,461.65</b>	<b>\$578,429.24</b>		<b>\$1,215,299.81</b>

	Elementary	Secondary	Federal	Total
<b>General Fund (10)</b>				
<b>2120 Guidance Services</b>				
100 Personnel Services - Salaries				
100 Personnel Services - Salaries	23,769.75	219,792.50		243,562.25
<b>Total Personnel Services - Salaries</b>	<b>\$23,769.75</b>	<b>\$219,792.50</b>		<b>\$243,562.25</b>
200 Personnel Services - Employee Benefits				
210 Group Insurance - Contracted Provider	8,211.37	92,355.02		100,566.39
220 Social Security Contributions	1,789.01	16,577.47		18,366.48
230 PSERS Retirement Contributions	8,150.66	75,367.02		83,517.68
270 Group Insurance - Self-Insurance	37.89	37.89		75.78
280 Other Post-Employment Benefits (OPEB)	7,000.00	7,000.00		14,000.00
<b>Total Personnel Services - Employee Benefits</b>	<b>\$25,188.93</b>	<b>\$197,337.40</b>		<b>\$216,526.33</b>
400 Purchased Property Services				
430 Repairs and Maintenance Services		80.00		80.00
440 Rentals		3,634.29		3,634.29
<b>Total Purchased Property Services</b>		<b>\$3,714.29</b>		<b>\$3,714.29</b>
500 Other Purchased Services				
530 Communications		58.50		58.50
<b>Total Other Purchased Services</b>		<b>\$58.50</b>		<b>\$58.50</b>
600 Supplies				
610 General Supplies	30.00	541.74		571.74
650 Supplies & Fees - Technology Related		1,138.52		1,138.52
<b>Total Supplies</b>	<b>\$30.00</b>	<b>\$1,680.26</b>		<b>\$1,710.26</b>
<b>Total 2120 Guidance Services</b>	<b>\$48,988.68</b>	<b>\$416,582.95</b>		<b>\$465,571.63</b>

	<u>Elementary</u>	<u>Secondary</u>	<u>Federal</u>	<u>Total</u>
<b>General Fund (10)</b>				
<b>2140 Psychological Services</b>				
<b>100 Personnel Services - Salaries</b>				
100 Personnel Services - Salaries	79,765.79	75,607.21		155,373.00
<b>Total Personnel Services - Salaries</b>	<b>\$79,765.79</b>	<b>\$75,607.21</b>		<b>\$155,373.00</b>
<b>200 Personnel Services - Employee Benefits</b>				
210 Group Insurance - Contracted Provider	4,283.01	28,783.24		33,066.25
220 Social Security Contributions	6,091.22	5,467.97		11,559.19
230 PSERS Retirement Contributions	26,065.85	25,925.58		51,991.43
280 Other Post-Employment Benefits (OPEB)	2,750.00	2,750.00		5,500.00
<b>Total Personnel Services - Employee Benefits</b>	<b>\$39,190.08</b>	<b>\$62,926.79</b>		<b>\$102,116.87</b>
<b>300 Purchased Professional and Technical Services</b>				
330 Other Professional Services	8,366.00	8,366.00		16,732.00
<b>Total Purchased Professional and Technical Services</b>	<b>\$8,366.00</b>	<b>\$8,366.00</b>		<b>\$16,732.00</b>
<b>600 Supplies</b>				
610 General Supplies	1,838.21	554.49		2,392.70
640 Books and Periodicals	312.89	20.00		332.89
<b>Total Supplies</b>	<b>\$2,151.10</b>	<b>\$574.49</b>		<b>\$2,725.59</b>
<b>Total 2140 Psychological Services</b>	<b>\$129,472.97</b>	<b>\$147,474.49</b>		<b>\$276,947.46</b>

	<u>Elementary</u>	<u>Secondary</u>	<u>Federal</u>	<u>Total</u>
<b>General Fund (10)</b>				
<b>2160 Social Work Services</b>				
<b>100 Personnel Services – Salaries</b>				158,523.45
100 Personnel Services – Salaries				158,523.45
<b>Total Personnel Services – Salaries</b>				<b>\$158,523.45</b>
<b>200 Personnel Services – Employee Benefits</b>				
210 Group Insurance – Contracted Provider				49,165.44
220 Social Security Contributions				11,538.65
230 PSERS Retirement Contributions				52,642.94
<b>Total Personnel Services – Employee Benefits</b>				<b>\$113,347.03</b>
<b>500 Other Purchased Services</b>				
580 Travel				90.48
<b>Total Other Purchased Services</b>				<b>\$90.48</b>
<b>800 Other Objects</b>				
810 Dues and Fees				792.00
<b>Total Other Objects</b>				<b>\$792.00</b>
<b>Total 2160 Social Work Services</b>				<b>\$272,752.96</b>



	<u>Elementary</u>	<u>Secondary</u>	<u>Federal</u>	<u>Total</u>
<b>General Fund (10)</b>				
<b>2170 Student Accounting Services</b>				
100 <u>Personnel Services - Salaries</u>				90,162.48
100 Personnel Services - Salaries				<b>\$90,162.48</b>
<b>Total Personnel Services - Salaries</b>				
200 <u>Personnel Services - Employee Benefits</u>				46,794.48
210 Group Insurance - Contracted Provider				6,675.42
220 Social Security Contributions				30,916.70
230 PSERS Retirement Contributions				6,750.00
280 Other Post-Employment Benefits (OPEB)				<b>\$91,136.60</b>
<b>Total Personnel Services - Employee Benefits</b>				
400 <u>Purchased Property Services</u>				1,660.00
430 Repairs and Maintenance Services				1,709.62
440 Rentals				<b>\$3,369.62</b>
<b>Total Purchased Property Services</b>				
500 <u>Other Purchased Services</u>				987.26
550 Printing and Binding				<b>\$987.26</b>
<b>Total Other Purchased Services</b>				
<b>Total 2170 Student Accounting Services</b>				
				<b>\$185,655.96</b>

	<u>Elementary</u>	<u>Secondary</u>	<u>Federal</u>	<u>Total</u>
<b>General Fund (10)</b>				
<b>2190 Other Student Services</b>				
<b>100 Personnel Services - Salaries</b>				
100 Personnel Services - Salaries	8,225.09			8,225.09
<b>Total Personnel Services - Salaries</b>	<b>\$8,225.09</b>			<b>\$8,225.09</b>
<b>200 Personnel Services - Employee Benefits</b>				
210 Group Insurance - Contracted Provider	2,718.72			2,718.72
220 Social Security Contributions	607.51			607.51
230 PSERS Retirement Contributions	2,820.48			2,820.48
<b>Total Personnel Services - Employee Benefits</b>	<b>\$6,146.71</b>			<b>\$6,146.71</b>
<b>Total 2190 Other Student Services</b>	<b>\$14,371.80</b>			<b>\$14,371.80</b>

	Elementary	Secondary	Federal	Total
<b>General Fund (10)</b>				
<b>2200 Support Services – Instructional Staff</b>				
<b>100 Personnel Services – Salaries</b>				
100 Personnel Services – Salaries	198,765.88	205,139.90	42,488.06	446,393.84
<b>Total Personnel Services – Salaries</b>	<b>\$198,765.88</b>	<b>\$205,139.90</b>	<b>\$42,488.06</b>	<b>\$446,393.84</b>
<b>200 Personnel Services – Employee Benefits</b>				
210 Group Insurance – Contracted Provider	78,770.82	71,176.98	19,642.92	169,590.72
220 Social Security Contributions	14,875.65	15,350.40	3,187.88	33,413.93
230 PSERS Retirement Contributions	68,156.77	67,917.66	14,569.26	150,643.69
240 Tuition Reimbursement	40,249.50	59,722.50		99,972.00
270 Group Insurance – Self-Insurance	2,950.38	(2,854.74)		95.64
<b>Total Personnel Services – Employee Benefits</b>	<b>\$205,003.12</b>	<b>\$211,312.80</b>	<b>\$37,400.06</b>	<b>\$453,715.98</b>
<b>300 Purchased Professional and Technical Services</b>				
322 Professional Educational Services – Ius			8,662.28	8,662.28
330 Other Professional Services	7,500.00	7,500.00		15,000.00
360 Employee Training and Development Services	1,064.00	1,264.00	417.00	2,745.00
<b>Total Purchased Professional and Technical Services</b>	<b>\$8,564.00</b>	<b>\$8,764.00</b>	<b>\$9,079.28</b>	<b>\$26,407.28</b>
<b>400 Purchased Property Services</b>				
440 Rentals	854.76	9,086.05		9,940.81
<b>Total Purchased Property Services</b>	<b>\$854.76</b>	<b>\$9,086.05</b>		<b>\$9,940.81</b>
<b>500 Other Purchased Services</b>				
580 Travel	429.08	429.10		858.18
<b>Total Other Purchased Services</b>	<b>\$429.08</b>	<b>\$429.10</b>		<b>\$858.18</b>
<b>600 Supplies</b>				
610 General Supplies	246.10	907.84		1,153.94
640 Books and Periodicals	7,183.12	16,233.03		23,416.15
<b>Total Supplies</b>	<b>\$7,429.22</b>	<b>\$17,140.87</b>		<b>\$24,570.09</b>
<b>800 Other Objects</b>				
810 Dues and Fees	113.24	192.76		306.00
<b>Total Other Objects</b>	<b>\$113.24</b>	<b>\$192.76</b>		<b>\$306.00</b>
<b>Total 2200 Support Services – Instructional Staff</b>	<b>\$421,159.30</b>	<b>\$452,065.48</b>	<b>\$88,967.40</b>	<b>\$962,192.18</b>

	<u>Elementary</u>	<u>Secondary</u>	<u>Federal</u>	<u>Total</u>
<b>General Fund (10)</b>				
<b>2250 School Library Services</b>				
100 <b>Personnel Services – Salaries</b>				
100 Personnel Services – Salaries	79,011.32	86,829.34		165,840.66
<b>Total Personnel Services – Salaries</b>	<b>\$79,011.32</b>	<b>\$86,829.34</b>		<b>\$165,840.66</b>
200 <b>Personnel Services – Employee Benefits</b>				
210 Group Insurance – Contracted Provider	35,268.96	29,464.20		64,733.16
220 Social Security Contributions	5,974.78	6,560.29		12,535.07
230 PSERS Retirement Contributions	27,092.90	27,349.07		54,441.97
270 Group Insurance – Self-Insurance	2,902.56	(2,902.56)		
<b>Total Personnel Services – Employee Benefits</b>	<b>\$71,239.20</b>	<b>\$60,471.00</b>		<b>\$131,710.20</b>
400 <b>Purchased Property Services</b>				
440 Rentals		8,231.30		8,231.30
<b>Total Purchased Property Services</b>		<b>\$8,231.30</b>		<b>\$8,231.30</b>
600 <b>Supplies</b>				
610 General Supplies		661.74		661.74
640 Books and Periodicals	7,183.12	16,233.03		23,416.15
<b>Total Supplies</b>	<b>\$7,183.12</b>	<b>\$16,894.77</b>		<b>\$24,077.89</b>
800 <b>Other Objects</b>				
810 Dues and Fees	113.24	192.76		306.00
<b>Total Other Objects</b>	<b>\$113.24</b>	<b>\$192.76</b>		<b>\$306.00</b>
<b>Total 2250 School Library Services</b>	<b>\$157,546.88</b>	<b>\$172,619.47</b>		<b>\$330,166.05</b>

General Fund (10)	Elementary	Secondary	Federal	Total
<b>2260 Instruction and Curriculum Development Services</b>				
100 <u>Personnel Services - Salaries</u>				
100 Personnel Services - Salaries	119,754.56	118,310.56		238,065.12
<b>Total Personnel Services - Salaries</b>	<b>\$119,754.56</b>	<b>\$118,310.56</b>		<b>\$238,065.12</b>
200 <u>Personnel Services - Employee Benefits</u>				
210 Group Insurance - Contracted Provider	43,501.86	41,712.78		85,214.64
220 Social Security Contributions	8,900.87	8,790.11		17,690.98
230 PSERS Retirement Contributions	41,063.87	40,568.59		81,632.46
270 Group Insurance - Self-Insurance	47.82	47.82		95.64
<b>Total Personnel Services - Employee Benefits</b>	<b>\$93,514.42</b>	<b>\$91,119.30</b>		<b>\$184,633.72</b>
300 <u>Purchased Professional and Technical Services</u>				
330 Other Professional Services	7,500.00	7,500.00		15,000.00
<b>Total Purchased Professional and Technical Services</b>	<b>\$7,500.00</b>	<b>\$7,500.00</b>		<b>\$15,000.00</b>
400 <u>Purchased Property Services</u>				
440 Rentals	854.76	854.75		1,709.51
<b>Total Purchased Property Services</b>	<b>\$854.76</b>	<b>\$854.75</b>		<b>\$1,709.51</b>
500 <u>Other Purchased Services</u>				
580 Travel	408.04	408.04		816.08
<b>Total Other Purchased Services</b>	<b>\$408.04</b>	<b>\$408.04</b>		<b>\$816.08</b>
600 <u>Supplies</u>				
610 General Supplies	246.10	246.10		492.20
<b>Total Supplies</b>	<b>\$246.10</b>	<b>\$246.10</b>		<b>\$492.20</b>
<b>Total 2260 Instruction and Curriculum Development Services</b>	<b>\$222,277.88</b>	<b>\$218,438.75</b>		<b>\$440,716.63</b>

	Elementary	Secondary	Federal	Total
<b>General Fund (10)</b>				
<b>2270 Instructional Staff Professional Development Services</b>				
<b>100 Personnel Services - Salaries</b>				
100 Personnel Services - Salaries			42,488.06	42,488.06
<b>Total Personnel Services - Salaries</b>			<b>\$42,488.06</b>	<b>\$42,488.06</b>
<b>200 Personnel Services - Employee Benefits</b>				
210 Group Insurance - Contracted Provider			19,642.92	19,642.92
220 Social Security Contributions			3,187.88	3,187.88
230 PSERS Retirement Contributions			14,569.26	14,569.26
240 Tuition Reimbursement	40,249.50	59,722.50		99,972.00
<b>Total Personnel Services - Employee Benefits</b>	<b>\$40,249.50</b>	<b>\$59,722.50</b>	<b>\$37,400.06</b>	<b>\$137,372.06</b>
<b>300 Purchased Professional and Technical Services</b>				
322 Professional Educational Services - Ius			3,266.24	3,266.24
360 Employee Training and Development Services	1,064.00	1,264.00	417.00	2,745.00
<b>Total Purchased Professional and Technical Services</b>	<b>\$1,064.00</b>	<b>\$1,264.00</b>	<b>\$3,683.24</b>	<b>\$6,011.24</b>
<b>500 Other Purchased Services</b>				
580 Travel	21.04	21.06		42.10
<b>Total Other Purchased Services</b>	<b>\$21.04</b>	<b>\$21.06</b>		<b>\$42.10</b>
<b>Total 2270 Instructional Staff Professional Development Services</b>	<b>\$41,334.54</b>	<b>\$61,007.56</b>	<b>\$83,571.36</b>	<b>\$185,913.46</b>

	<u>Elementary</u>	<u>Secondary</u>	<u>Federal</u>	<u>Total</u>
<b>General Fund (10)</b>				
<b>2280 Nonpublic Support Services</b>				
<u>300 Purchased Professional and Technical Services</u>				
322 Professional Educational Services - lus			5,396.04	5,396.04
<b>Total Purchased Professional and Technical Services</b>			<b>\$5,396.04</b>	<b>\$5,396.04</b>
<b>Total 2280 Nonpublic Support Services</b>			<b>\$5,396.04</b>	<b>\$5,396.04</b>

	Elementary	Secondary	Federal	Total
<b>General Fund (10)</b>				
<b>2300 Support Services – Administration</b>				
100 Personnel Services – Salaries	356,205.75	412,381.17		1,128,400.05
<b>Total Personnel Services – Salaries</b>	<b>\$356,205.75</b>	<b>\$412,381.17</b>		<b>\$1,128,400.05</b>
<b>200 Personnel Services – Employee Benefits</b>				
210 Group Insurance – Contracted Provider	166,656.73	165,050.14		435,272.39
220 Social Security Contributions	26,460.77	30,818.05		84,212.00
230 PSERS Retirement Contributions	122,142.85	141,405.72		382,556.47
260 Workers' Compensation	2,214.83	2,657.86		7,087.55
270 Group Insurance – Self-Insurance			(36.48)	(36.48)
280 Other Post-Employment Benefits (OPEB)	6,000.00	6,000.00		14,666.66
291 Other Retirement Plans		1,200.00		7,200.00
<b>Total Personnel Services – Employee Benefits</b>	<b>\$323,475.18</b>	<b>\$347,131.77</b>		<b>\$330,958.59</b>
<b>300 Purchased Professional and Technical Services</b>				
330 Other Professional Services				387,602.20
<b>Total Purchased Professional and Technical Services</b>				<b>\$387,602.20</b>
<b>400 Purchased Property Services</b>				
430 Repairs and Maintenance Services	160.00	80.00		320.00
440 Rentals	13,308.47	7,394.69		27,297.87
<b>Total Purchased Property Services</b>	<b>\$13,468.47</b>	<b>\$7,474.69</b>		<b>\$27,617.87</b>
<b>500 Other Purchased Services</b>				
520 Insurance – General				408.00
530 Communications				953.92
549 Other Advertising/Public Relations	185.44	6,008.97		4,316.32
550 Printing and Binding	747.50	448.50		9,670.68
580 Travel	\$932.94	\$6,457.47		3,995.79
<b>Total Other Purchased Services</b>				<b>\$19,344.71</b>
<b>600 Supplies</b>				
610 General Supplies	515.36	3,846.52		7,879.37
630 Food		407.50		814.86
640 Books and Periodicals	219.95			3,594.95
<b>Total Supplies</b>	<b>\$735.31</b>	<b>\$4,254.02</b>		<b>\$12,289.18</b>
<b>800 Other Objects</b>				
810 Dues and Fees	1,785.00	1,785.00		15,953.59
<b>Total Other Objects</b>	<b>\$1,785.00</b>	<b>\$1,785.00</b>		<b>\$15,953.59</b>
<b>Total 2300 Support Services – Administration</b>	<b>\$698,602.65</b>	<b>\$779,484.12</b>		<b>\$2,522,166.19</b>



	Elementary	Secondary	Federal	Total
General Fund (10)				
2310 Board Services				
100 Personnel Services - Salaries				
100 Personnel Services - Salaries				2,499.90
<b>Total Personnel Services - Salaries</b>				<b>\$2,499.90</b>
200 Personnel Services - Employee Benefits				
220 Social Security Contributions				186.94
230 PSERS Retirement Contributions				857.22
<b>Total Personnel Services - Employee Benefits</b>				<b>\$1,044.16</b>
300 Purchased Professional and Technical Services				
330 Other Professional Services				6,375.15
<b>Total Purchased Professional and Technical Services</b>				<b>\$6,375.15</b>
500 Other Purchased Services				
520 Insurance - General				408.00
549 Other Advertising/Public Relations				4,316.32
580 Travel				418.00
<b>Total Other Purchased Services</b>				<b>\$5,142.32</b>
600 Supplies				
610 General Supplies				1,621.84
630 Food				407.36
640 Books and Periodicals				1,115.00
<b>Total Supplies</b>				<b>\$3,144.20</b>
800 Other Objects				
810 Dues and Fees				9,108.59
<b>Total Other Objects</b>				<b>\$9,108.59</b>
<b>Total 2310 Board Services</b>				<b>\$27,314.32</b>

	<u>Elementary</u>	<u>Secondary</u>	<u>Federal</u>	<u>Total</u>
<b>General Fund (10)</b>				
<b>2330 Tax Assessment and Collection Services</b>				
100 Personnel Services - Salaries				12,750.00
100 Personnel Services - Salaries				\$12,750.00
<b>Total Personnel Services - Salaries</b>				
200 Personnel Services - Employee Benefits				975.36
220 Social Security Contributions				\$975.36
<b>Total Personnel Services - Employee Benefits</b>				
300 Purchased Professional and Technical Services				
330 Other Professional Services				256,900.75
<b>Total Purchased Professional and Technical Services</b>				\$256,900.75
500 Other Purchased Services				
530 Communications				953.92
550 Printing and Binding				2,056.54
<b>Total Other Purchased Services</b>				\$3,010.46
<b>Total 2330 Tax Assessment and Collection Services</b>				\$273,636.57

	<u>Elementary</u>	<u>Secondary</u>	<u>Federal</u>	<u>Total</u>
General Fund (10)				
2350 Legal and Accounting Services				
300 <u>Purchased Professional and Technical Services</u>				
330 Other Professional Services				123,976.30
<b>Total Purchased Professional and Technical Services</b>				<b>\$123,976.30</b>
<b>Total 2350 Legal and Accounting Services</b>				<b>\$123,976.30</b>

	Elementary	Secondary	Federal	Total
<b>General Fund (10)</b>				
<b>2360 Office of the Superintendent / Executive Director Services</b>				
<b>100 Personnel Services - Salaries</b>				
100 Personnel Services - Salaries				208,481.23
<b>Total Personnel Services - Salaries</b>				<b>\$208,481.23</b>
<b>200 Personnel Services - Employee Benefits</b>				
210 Group Insurance - Contracted Provider				47,632.56
220 Social Security Contributions				15,494.47
230 PSERS Retirement Contributions				71,488.04
260 Workers' Compensation				2,214.86
270 Group Insurance - Self-Insurance				(36.48)
280 Other Post-Employment Benefits (OPEB)				2,666.66
291 Other Retirement Plans				6,000.00
<b>Total Personnel Services - Employee Benefits</b>				<b>\$145,460.11</b>
<b>300 Purchased Professional and Technical Services</b>				
330 Other Professional Services				350.00
<b>Total Purchased Professional and Technical Services</b>				<b>\$350.00</b>
<b>400 Purchased Property Services</b>				
430 Repairs and Maintenance Services				80.00
440 Rentals				6,594.71
<b>Total Purchased Property Services</b>				<b>\$6,674.71</b>
<b>500 Other Purchased Services</b>				
580 Travel				2,381.79
<b>Total Other Purchased Services</b>				<b>\$2,381.79</b>
<b>600 Supplies</b>				
610 General Supplies				1,259.65
640 Books and Periodicals				2,260.00
<b>Total Supplies</b>				<b>\$3,519.65</b>
<b>800 Other Objects</b>				
810 Dues and Fees				3,275.00
<b>Total Other Objects</b>				<b>\$3,275.00</b>
<b>Total 2360 Office of the Superintendent / Executive Director Services</b>				<b>\$370,142.49</b>

	<u>Elementary</u>	<u>Secondary</u>	<u>Federal</u>	<u>Total</u>
<b>General Fund (10)</b>				
<b>2380 Office of the Principal Services</b>				
<b>100 Personnel Services - Salaries</b>				
100 Personnel Services - Salaries	356,205.75	412,381.17		768,586.92
<b>Total Personnel Services - Salaries</b>	<b>\$356,205.75</b>	<b>\$412,381.17</b>		<b>\$768,586.92</b>
<b>200 Personnel Services - Employee Benefits</b>				
210 Group Insurance - Contracted Provider	166,656.73	165,050.14		331,706.87
220 Social Security Contributions	26,460.77	30,818.05		57,278.82
230 PSERS Retirement Contributions	122,142.85	141,405.72		263,548.57
260 Workers' Compensation	2,214.83	2,657.86		4,872.69
280 Other Post-Employment Benefits (OPEB)	6,000.00	6,000.00		12,000.00
291 Other Retirement Plans		1,200.00		1,200.00
<b>Total Personnel Services - Employee Benefits</b>	<b>\$323,475.18</b>	<b>\$347,131.77</b>		<b>\$670,606.95</b>
<b>400 Purchased Property Services</b>				
430 Repairs and Maintenance Services	160.00	80.00		240.00
440 Rentals	13,308.47	7,394.69		20,703.16
<b>Total Purchased Property Services</b>	<b>\$13,468.47</b>	<b>\$7,474.69</b>		<b>\$20,943.16</b>
<b>500 Other Purchased Services</b>				
550 Printing and Binding	185.44	6,008.97		6,194.41
580 Travel	747.50	448.50		1,196.00
<b>Total Other Purchased Services</b>	<b>\$932.94</b>	<b>\$6,457.47</b>		<b>\$7,390.41</b>
<b>600 Supplies</b>				
610 General Supplies	515.36	3,846.52		4,361.88
630 Food		407.50		407.50
640 Books and Periodicals	219.95			219.95
<b>Total Supplies</b>	<b>\$735.31</b>	<b>\$4,254.02</b>		<b>\$4,989.33</b>
<b>800 Other Objects</b>				
810 Dues and Fees	1,785.00	1,785.00		3,570.00
<b>Total Other Objects</b>	<b>\$1,785.00</b>	<b>\$1,785.00</b>		<b>\$3,570.00</b>
<b>Total 2380 Office of the Principal Services</b>	<b>\$696,602.65</b>	<b>\$779,484.12</b>		<b>\$1,476,086.77</b>

	<u>Elementary</u>	<u>Secondary</u>	<u>Federal</u>	<u>Total</u>
<b>General Fund (10)</b>				
<b>2390 Other Administration Services</b>				
100 Personnel Services – Salaries				
100 Personnel Services – Salaries	136,082.00			136,082.00
<b>Total Personnel Services – Salaries</b>	<b>\$136,082.00</b>			<b>\$136,082.00</b>
<b>200 Personnel Services – Employee Benefits</b>				
210 Group Insurance – Contracted Provider				55,932.96
220 Social Security Contributions				10,276.41
230 PSERS Retirement Contributions				46,662.64
<b>Total Personnel Services – Employee Benefits</b>				<b>\$112,872.01</b>
<b>500 Other Purchased Services</b>				
550 Printing and Binding				1,419.73
<b>Total Other Purchased Services</b>				<b>\$1,419.73</b>
<b>600 Supplies</b>				
610 General Supplies				636.00
<b>Total Supplies</b>				<b>\$636.00</b>
<b>Total 2390 Other Administration Services</b>				<b>\$251,009.74</b>

	<u>Elementary</u>	<u>Secondary</u>	<u>Federal</u>	<u>Total</u>
<b>General Fund (10)</b>				
<b>2400 Support Services – Pupil Health</b>				
<b>100 Personnel Services – Salaries</b>				
100 Personnel Services – Salaries				273,070.54
<b>Total Personnel Services – Salaries</b>				<b>\$273,070.54</b>
<b>200 Personnel Services – Employee Benefits</b>				
210 Group Insurance – Contracted Provider				104,592.48
220 Social Security Contributions				20,638.90
230 PSERS Retirement Contributions				92,555.74
<b>Total Personnel Services – Employee Benefits</b>				<b>\$217,787.12</b>
<b>300 Purchased Professional and Technical Services</b>				
330 Other Professional Services				7,447.00
<b>Total Purchased Professional and Technical Services</b>				<b>\$7,447.00</b>
<b>400 Purchased Property Services</b>				
430 Repairs and Maintenance Services				192.00
440 Rentals				3,540.00
<b>Total Purchased Property Services</b>				<b>\$3,732.00</b>
<b>600 Supplies</b>				
610 General Supplies				3,467.14
<b>Total Supplies</b>				<b>\$3,467.14</b>
<b>800 Other Objects</b>				
810 Dues and Fees				100.00
<b>Total Other Objects</b>				<b>\$100.00</b>
<b>Total 2400 Support Services – Pupil Health</b>				<b>\$505,603.80</b>

	<u>Elementary</u>	<u>Secondary</u>	<u>Federal</u>	<u>Total</u>
<b>General Fund (10)</b>				
<b>2420 Medical Services</b>				
<b>300 Purchased Professional and Technical Services</b>				
330 Other Professional Services				549.00
<b>Total Purchased Professional and Technical Services</b>				<b>\$549.00</b>
<b>400 Purchased Property Services</b>				
430 Repairs and Maintenance Services				144.00
440 Rentals				3,540.00
<b>Total Purchased Property Services</b>				<b>\$3,684.00</b>
<b>600 Supplies</b>				
610 General Supplies				1,660.07
<b>Total Supplies</b>				<b>\$1,660.07</b>
<b>Total 2420 Medical Services</b>				<b>\$5,893.07</b>



	<u>Elementary</u>	<u>Secondary</u>	<u>Federal</u>	<u>Total</u>
General Fund (10)				
2430 Dental Services				
300 <u>Purchased Professional and Technical Services</u>				
330 Other Professional Services				279.00
<b>Total Purchased Professional and Technical Services</b>				<b>\$279.00</b>
600 <u>Supplies</u>				
610 General Supplies				54.90
<b>Total Supplies</b>				<b>\$54.90</b>
<b>Total 2430 Dental Services</b>				<b>\$333.90</b>

	<u>Elementary</u>	<u>Secondary</u>	<u>Federal</u>	<u>Total</u>
<b>General Fund (10)</b>				
<b>2440 Nursing Services</b>				
100 Personnel Services - Salaries				218,684.29
<b>Total Personnel Services - Salaries</b>				<b>\$218,684.29</b>
<b>200 Personnel Services - Employee Benefits</b>				
210 Group Insurance - Contracted Provider				84,189.48
220 Social Security Contributions				16,530.64
230 PSERS Retirement Contributions				73,906.73
<b>Total Personnel Services - Employee Benefits</b>				<b>\$174,626.85</b>
<b>600 Supplies</b>				
610 General Supplies				120.34
<b>Total Supplies</b>				<b>\$120.34</b>
<b>800 Other Objects</b>				
810 Dues and Fees				75.00
<b>Total Other Objects</b>				<b>\$75.00</b>
<b>Total 2440 Nursing Services</b>				<b>\$393,506.48</b>

	<u>Elementary</u>	<u>Secondary</u>	<u>Federal</u>	<u>Total</u>
<b>General Fund (10)</b>				
<b>2450 Nonpublic Health Services</b>				
<b>100 Personnel Services - Salaries</b>				
100 Personnel Services - Salaries				54,386.25
<b>Total Personnel Services - Salaries</b>				<b>\$54,386.25</b>
<b>200 Personnel Services - Employee Benefits</b>				
210 Group Insurance - Contracted Provider				20,403.00
220 Social Security Contributions				4,108.26
230 PSERS Retirement Contributions				18,649.01
<b>Total Personnel Services - Employee Benefits</b>				<b>\$43,160.27</b>
<b>400 Purchased Property Services</b>				
430 Repairs and Maintenance Services				48.00
<b>Total Purchased Property Services</b>				<b>\$48.00</b>
<b>600 Supplies</b>				
610 General Supplies				1,631.83
<b>Total Supplies</b>				<b>\$1,631.83</b>
<b>800 Other Objects</b>				
810 Dues and Fees				25.00
<b>Total Other Objects</b>				<b>\$25.00</b>
<b>Total 2450 Nonpublic Health Services</b>				<b>\$99,251.35</b>

	<u>Elementary</u>	<u>Secondary</u>	<u>Federal</u>	<u>Total</u>
<b>General Fund (10)</b>				
<b>2490 Other Health Services</b>				
<b>300 Purchased Professional and Technical Services</b>				
330 Other Professional Services				6,619.00
<b>Total Purchased Professional and Technical Services</b>				<b>\$6,619.00</b>
<b>Total 2490 Other Health Services</b>				<b>\$6,619.00</b>

	Elementary	Secondary	Federal	Total
<b>General Fund (10)</b>				
<b>2500 Support Services – Business</b>				
<b>100 Personnel Services – Salaries</b>				
100 Personnel Services – Salaries				377,893.48
<b>Total Personnel Services – Salaries</b>				<b>\$377,893.48</b>
<b>200 Personnel Services – Employee Benefits</b>				
210 Group Insurance – Contracted Provider				146,568.32
220 Social Security Contributions				27,892.14
230 PSERS Retirement Contributions				129,579.43
260 Workers' Compensation				3,543.76
270 Group Insurance – Self-Insurance				1,016.16
280 Other Post-Employment Benefits (OPEB)				12,200.02
291 Other Retirement Plans				13,700.04
<b>Total Personnel Services – Employee Benefits</b>				<b>\$334,499.87</b>
<b>300 Purchased Professional and Technical Services</b>				
330 Other Professional Services				36,441.89
340 Technical Services				4,370.00
<b>Total Purchased Professional and Technical Services</b>				<b>\$40,811.89</b>
<b>400 Purchased Property Services</b>				
430 Repairs and Maintenance Services				80.00
440 Rentals				31,769.56
<b>Total Purchased Property Services</b>				<b>\$31,849.56</b>
<b>500 Other Purchased Services</b>				
530 Communications				6,296.16
550 Printing and Binding				809.96
580 Travel				73.12
<b>Total Other Purchased Services</b>				<b>\$7,179.24</b>
<b>600 Supplies</b>				
610 General Supplies				9,771.14
<b>Total Supplies</b>				<b>\$9,771.14</b>
<b>800 Other Objects</b>				
810 Dues and Fees				435.00
<b>Total Other Objects</b>				<b>\$435.00</b>
<b>Total 2500 Support Services – Business</b>				<b>\$802,440.18</b>

	<u>Elementary</u>	<u>Secondary</u>	<u>Federal</u>	<u>Total</u>
<b>General Fund (10)</b>				
<b>2510 Fiscal Services</b>				
<b>100 Personnel Services - Salaries</b>				
100 Personnel Services - Salaries				377,893.48
<b>Total Personnel Services - Salaries</b>				<b>\$377,893.48</b>
<b>200 Personnel Services - Employee Benefits</b>				
210 Group Insurance - Contracted Provider				146,568.32
220 Social Security Contributions				27,892.14
230 PSERS Retirement Contributions				129,579.43
260 Workers' Compensation				3,543.76
270 Group Insurance - Self-Insurance				1,016.16
280 Other Post-Employment Benefits (OPEB)				12,200.02
291 Other Retirement Plans				13,700.04
<b>Total Personnel Services - Employee Benefits</b>				<b>\$334,499.87</b>
<b>300 Purchased Professional and Technical Services</b>				
330 Other Professional Services				36,441.89
340 Technical Services				4,370.00
<b>Total Purchased Professional and Technical Services</b>				<b>\$40,811.89</b>
<b>400 Purchased Property Services</b>				
430 Repairs and Maintenance Services				80.00
440 Rentals				27,869.56
<b>Total Purchased Property Services</b>				<b>\$27,949.56</b>
<b>500 Other Purchased Services</b>				
530 Communications				296.16
580 Travel				73.12
<b>Total Other Purchased Services</b>				<b>\$369.28</b>
<b>600 Supplies</b>				
610 General Supplies				7,432.80
<b>Total Supplies</b>				<b>\$7,432.80</b>
<b>800 Other Objects</b>				
810 Dues and Fees				435.00
<b>Total Other Objects</b>				<b>\$435.00</b>
<b>Total 2510 Fiscal Services</b>				<b>\$789,391.88</b>

	<u>Elementary</u>	<u>Secondary</u>	<u>Federal</u>	<u>Total</u>
<b>General Fund (10)</b>				
<b>2511 Supervision of Fiscal Services - Head of Component</b>				
100 <u>Personnel Services - Salaries</u>				
100 Personnel Services - Salaries				184,738.45
<b>Total Personnel Services - Salaries</b>				<b>\$184,738.45</b>
200 <u>Personnel Services - Employee Benefits</u>				
210 Group Insurance - Contracted Provider				59,693.24
220 Social Security Contributions				13,649.71
230 PSERS Retirement Contributions				63,346.78
260 Workers' Compensation				3,543.76
270 Group Insurance - Self-Insurance				1,016.16
280 Other Post-Employment Benefits (OPEB)				6,200.02
291 Other Retirement Plans				13,700.04
<b>Total Personnel Services - Employee Benefits</b>				<b>\$161,149.71</b>
300 <u>Purchased Professional and Technical Services</u>				
330 Other Professional Services				1,824.89
<b>Total Purchased Professional and Technical Services</b>				<b>\$1,824.89</b>
400 <u>Purchased Property Services</u>				
430 Repairs and Maintenance Services				80.00
440 Rentals				1,709.62
<b>Total Purchased Property Services</b>				<b>\$1,789.62</b>
500 <u>Other Purchased Services</u>				
530 Communications				296.16
580 Travel				73.12
<b>Total Other Purchased Services</b>				<b>\$369.28</b>
600 <u>Supplies</u>				
610 General Supplies				443.72
<b>Total Supplies</b>				<b>\$443.72</b>
800 <u>Other Objects</u>				
810 Dues and Fees				435.00
<b>Total Other Objects</b>				<b>\$435.00</b>
<b>Total 2511 Supervision of Fiscal Services - Head of Component</b>				<b>\$350,750.67</b>

LEA : 129546103 Pottsville Area SD

Printed 11/19/2020 9:36:07 PM

	<u>Elementary</u>	<u>Secondary</u>	<u>Federal</u>	<u>Total</u>
<b>General Fund (10)</b>				
<b>2513 Receiving and Disbursing Funds Services</b>				
<b>100 Personnel Services – Salaries</b>				
100 Personnel Services – Salaries				41,842.10
<b>Total Personnel Services – Salaries</b>				<b>\$41,842.10</b>
<b>200 Personnel Services – Employee Benefits</b>				
210 Group Insurance – Contracted Provider				23,231.76
220 Social Security Contributions				3,071.62
230 PSERS Retirement Contributions				14,947.76
<b>Total Personnel Services – Employee Benefits</b>				<b>\$40,651.14</b>
<b>Total 2513 Receiving and Disbursing Funds Services</b>				<b>\$82,493.24</b>



	<u>Elementary</u>	<u>Secondary</u>	<u>Federal</u>	<u>Total</u>
<b>General Fund (10)</b>				
<b>2514 Payroll Services</b>				
<b>100 Personnel Services - Salaries</b>				
100 Personnel Services - Salaries				103,712.93
<b>Total Personnel Services - Salaries</b>				<b>\$103,712.93</b>
<b>200 Personnel Services - Employee Benefits</b>				
210 Group Insurance - Contracted Provider				33,300.00
220 Social Security Contributions				7,593.63
230 PSERS Retirement Contributions				35,562.96
<b>Total Personnel Services - Employee Benefits</b>				<b>\$76,456.59</b>
<b>300 Purchased Professional and Technical Services</b>				
330 Other Professional Services				3,417.00
340 Technical Services				4,370.00
<b>Total Purchased Professional and Technical Services</b>				<b>\$7,787.00</b>
<b>400 Purchased Property Services</b>				
440 Rentals				16,509.00
<b>Total Purchased Property Services</b>				<b>\$16,509.00</b>
<b>600 Supplies</b>				
610 General Supplies				6,977.55
<b>Total Supplies</b>				<b>\$6,977.55</b>
<b>Total 2514 Payroll Services</b>				<b>\$211,443.07</b>

	<u>Elementary</u>	<u>Secondary</u>	<u>Federal</u>	<u>Total</u>
<b>General Fund (10)</b>				
<b>2515 Financial Accounting Services</b>				
100 Personnel Services - Salaries				42,600.00
100 Personnel Services - Salaries				\$42,600.00
<b>Total Personnel Services - Salaries</b>				
200 Personnel Services - Employee Benefits				23,231.76
210 Group Insurance - Contracted Provider				3,209.41
220 Social Security Contributions				14,607.51
230 PSERS Retirement Contributions				6,000.00
280 Other Post-Employment Benefits (OPEB)				\$47,048.68
<b>Total Personnel Services - Employee Benefits</b>				
300 Purchased Professional and Technical Services				6,700.00
330 Other Professional Services				\$6,700.00
<b>Total Purchased Professional and Technical Services</b>				
400 Purchased Property Services				9,650.94
440 Rentals				\$9,650.94
<b>Total Purchased Property Services</b>				
600 Supplies				11.53
610 General Supplies				\$11.53
<b>Total Supplies</b>				
<b>Total 2515 Financial Accounting Services</b>				\$106,011.15

	<u>Elementary</u>	<u>Secondary</u>	<u>Federal</u>	<u>Total</u>
General Fund (10)				
2516 Internal Auditing Services				
300 Purchased Professional and Technical Services				
330 Other Professional Services				24,500.00
Total Purchased Professional and Technical Services				\$24,500.00
Total 2516 Internal Auditing Services				\$24,500.00

	<u>Elementary</u>	<u>Secondary</u>	<u>Federal</u>	<u>Total</u>
<b>General Fund (10)</b>				
<b>2519 Other Fiscal Services</b>				
100 Personnel Services - Salaries				5,000.00
100 Personnel Services - Salaries				<b>\$5,000.00</b>
<b>Total Personnel Services - Salaries</b>				
<b>200 Personnel Services - Employee Benefits</b>				
210 Group Insurance - Contracted Provider				7,111.56
220 Social Security Contributions				367.77
230 PSERS Retirement Contributions				1,714.42
<b>Total Personnel Services - Employee Benefits</b>				<b>\$9,193.75</b>
<b>Total 2519 Other Fiscal Services</b>				<b>\$14,193.75</b>

	<u>Elementary</u>	<u>Secondary</u>	<u>Federal</u>	<u>Total</u>
General Fund (10)				
2520 Purchasing Services				
400 Purchased Property Services				
440 Rentals				3,900.00
<b>Total Purchased Property Services</b>				<b>\$3,900.00</b>
500 Other Purchased Services				
530 Communications				6,000.00
550 Printing and Binding				809.96
<b>Total Other Purchased Services</b>				<b>\$6,809.96</b>
600 Supplies				
610 General Supplies				2,338.34
<b>Total Supplies</b>				<b>\$2,338.34</b>
<b>Total 2520 Purchasing Services</b>				<b>\$13,048.30</b>

	<u>Elementary</u>	<u>Secondary</u>	<u>Federal</u>	<u>Total</u>
<b>General Fund (10)</b>				
<b>2600 Operation and Maintenance of Plant Services</b>				
<b>100 Personnel Services - Salaries</b>				
100 Personnel Services - Salaries				839,085.15
<b>Total Personnel Services - Salaries</b>				<b>\$839,085.15</b>
<b>200 Personnel Services - Employee Benefits</b>				
210 Group Insurance - Contracted Provider				531,585.90
220 Social Security Contributions				63,132.36
230 PSERS Retirement Contributions				280,005.45
260 Workers' Compensation				15,946.99
270 Group Insurance - Self-Insurance				6,000.00
280 Other Post-Employment Benefits (OPEB)				1,600.00
291 Other Retirement Plans				1,500.00
<b>Total Personnel Services - Employee Benefits</b>				<b>\$899,770.70</b>
<b>300 Purchased Professional and Technical Services</b>				
330 Other Professional Services				39,987.16
350 Security / Safety Services				2,036.00
<b>Total Purchased Professional and Technical Services</b>				<b>\$42,023.16</b>
<b>400 Purchased Property Services</b>				
410 Cleaning Services				16,168.70
420 Utility Services				106,595.19
430 Repairs and Maintenance Services				514,082.32
440 Rentals				1,408.19
460 Extermination Services				12,136.29
<b>Total Purchased Property Services</b>				<b>\$650,390.69</b>
<b>500 Other Purchased Services</b>				
521 Fire Insurance				158.60
522 Automotive Liability Insurance				30,617.12
523 General Property and Liability Insurance				97,790.88
530 Communications				52,404.35
<b>Total Other Purchased Services</b>				<b>\$180,970.95</b>
<b>600 Supplies</b>				
610 General Supplies	109,419.99	128,992.75	4,792.91	243,205.65
620 Energy				553,643.53
640 Books and Periodicals				39.99
<b>Total Supplies</b>	<b>\$109,419.99</b>	<b>\$128,992.75</b>	<b>\$4,792.91</b>	<b>\$796,889.17</b>
<b>800 Other Objects</b>				
810 Dues and Fees				3,182.93
<b>Total Other Objects</b>				<b>\$3,182.93</b>
<b>Total 2600 Operation and Maintenance of Plant Services</b>	<b>\$109,419.99</b>	<b>\$128,992.75</b>	<b>\$4,792.91</b>	<b>\$3,412,312.75</b>

	Elementary	Secondary	Federal	Total
<b>General Fund (10)</b>				
<b>2610 Supervision of Operation and Maintenance of Plant Services</b>				
<b>100 Personnel Services - Salaries</b>				
100 Personnel Services - Salaries				95,110.29
<b>Total Personnel Services - Salaries</b>				<b>\$95,110.29</b>
<b>200 Personnel Services - Employee Benefits</b>				
210 Group Insurance - Contracted Provider				47,781.48
220 Social Security Contributions				7,047.24
230 PSERS Retirement Contributions				32,613.42
280 Other Post-Employment Benefits (OPEB)				1,600.00
<b>Total Personnel Services - Employee Benefits</b>				<b>\$89,042.14</b>
<b>Total 2610 Supervision of Operation and Maintenance of Plant Services</b>				<b>\$184,152.43</b>

General Fund (10)	Elementary	Secondary	Federal	Total
<b>2619 Supervision of Operation and Maintenance of Plant Services - All Other Supervision</b>				
<b>100 Personnel Services - Salaries</b>				95,110.29
100 Personnel Services - Salaries				\$95,110.29
<b>200 Personnel Services - Employee Benefits</b>				47,781.48
210 Group Insurance - Contracted Provider				7,047.24
220 Social Security Contributions				32,613.42
230 PSERS Retirement Contributions				1,600.00
280 Other Post-Employment Benefits (OPEB)				\$89,042.14
<b>Total Personnel Services - Employee Benefits</b>				\$89,042.14
<b>Total 2619 Supervision of Operation and Maintenance of Plant Services - All Other Supervision</b>				\$184,152.43



	<u>Elementary</u>	<u>Secondary</u>	<u>Federal</u>	<u>Total</u>
<b>General Fund (10)</b>				
<b>2620 Operation of Buildings Services</b>				
<b>100 Personnel Services - Salaries</b>				
100 Personnel Services - Salaries				578,788.01
<b>Total Personnel Services - Salaries</b>				<b>\$578,788.01</b>
<b>200 Personnel Services - Employee Benefits</b>				
210 Group Insurance - Contracted Provider				396,874.87
220 Social Security Contributions				43,705.76
230 PSERS Retirement Contributions				198,453.95
260 Workers' Compensation				15,946.99
291 Other Retirement Plans				1,500.00
<b>Total Personnel Services - Employee Benefits</b>				<b>\$656,481.57</b>
<b>400 Purchased Property Services</b>				
410 Cleaning Services				16,168.70
420 Utility Services				106,595.19
430 Repairs and Maintenance Services				506,982.58
440 Rentals				1,408.19
460 Extermination Services				12,136.29
<b>Total Purchased Property Services</b>				<b>\$643,290.95</b>
<b>500 Other Purchased Services</b>				
521 Fire Insurance				158.60
522 Automotive Liability Insurance				30,617.12
523 General Property and Liability Insurance				97,790.88
530 Communications				42,864.35
<b>Total Other Purchased Services</b>				<b>\$171,430.95</b>
<b>600 Supplies</b>				
610 General Supplies				204,324.41
620 Energy				542,874.46
640 Books and Periodicals				39.99
<b>Total Supplies</b>	90,017.03	109,514.47	4,792.91	\$747,238.86
<b>800 Other Objects</b>				
810 Dues and Fees				3,182.93
<b>Total Other Objects</b>				<b>\$3,182.93</b>
<b>Total 2620 Operation of Buildings Services</b>	<b>\$90,017.03</b>	<b>\$109,514.47</b>	<b>\$4,792.91</b>	<b>\$2,800,413.27</b>

	Elementary	Secondary	Federal	Total
<b>General Fund (10)</b>				
<b>2630 Care and Upkeep of Grounds Services</b>				
<b>100 Personnel Services – Salaries</b>				117,005.33
100 Personnel Services – Salaries				117,005.33
<b>Total Personnel Services – Salaries</b>				<b>\$117,005.33</b>
<b>200 Personnel Services – Employee Benefits</b>				
210 Group Insurance – Contracted Provider				77,732.25
220 Social Security Contributions				8,746.77
230 PSERS Retirement Contributions				40,121.04
270 Group Insurance – Self-Insurance				6,000.00
<b>Total Personnel Services – Employee Benefits</b>				<b>\$132,600.06</b>
<b>400 Purchased Property Services</b>				
430 Repairs and Maintenance Services				1,959.74
<b>Total Purchased Property Services</b>				<b>\$1,959.74</b>
<b>600 Supplies</b>				
610 General Supplies	12,769.44	12,844.75		25,614.19
<b>Total Supplies</b>	<b>\$12,769.44</b>	<b>\$12,844.75</b>		<b>\$25,614.19</b>
<b>Total 2630 Care and Upkeep of Grounds Services</b>	<b>\$12,769.44</b>	<b>\$12,844.75</b>		<b>\$277,179.32</b>

	<u>Elementary</u>	<u>Secondary</u>	<u>Federal</u>	<u>Total</u>
<b>General Fund (10)</b>				
<b>2640 Care and Upkeep of Equipment Services</b>				
<b>100 Personnel Services - Salaries</b>				
100 Personnel Services - Salaries				2,762.85
<b>Total Personnel Services - Salaries</b>				<b>\$2,762.85</b>
<b>200 Personnel Services - Employee Benefits</b>				
220 Social Security Contributions				203.84
230 PSERS Retirement Contributions				947.39
<b>Total Personnel Services - Employee Benefits</b>				<b>\$1,151.23</b>
<b>Total 2640 Care and Upkeep of Equipment Services</b>				<b>\$3,914.08</b>

General Fund (10)	Elementary	Secondary	Federal	Total
<b>2650 Vehicle Operation and Maintenance Services (Other Than Student Transportation Vehicles)</b>				
100 Personnel Services - Salaries				5,850.00
100 Personnel Services - Salaries				\$5,850.00
<b>Total Personnel Services - Salaries</b>				
200 Personnel Services - Employee Benefits				3,457.56
210 Group Insurance - Contracted Provider				420.48
220 Social Security Contributions				2,005.90
230 PSERS Retirement Contributions				\$5,883.94
<b>Total Personnel Services - Employee Benefits</b>				
400 Purchased Property Services				280.00
430 Repairs and Maintenance Services				\$280.00
<b>Total Purchased Property Services</b>				
600 Supplies				2,377.05
610 General Supplies	1,188.52	1,188.53		10,769.07
620 Energy				\$13,146.12
<b>Total Supplies</b>	\$1,188.52	\$1,188.53		\$25,160.06
<b>Total 2650 Vehicle Operation and Maintenance Services (Other Than Student Transportation Vehicles)</b>	\$1,188.52	\$1,188.53		\$25,160.06

	<u>Elementary</u>	<u>Secondary</u>	<u>Federal</u>	<u>Total</u>
<b>General Fund (10)</b>				
<b>2660 Safety and Security Services</b>				
<b>100 Personnel Services - Salaries</b>				
100 Personnel Services - Salaries				39,568.67
<b>Total Personnel Services - Salaries</b>				<b>\$39,568.67</b>
<b>200 Personnel Services - Employee Benefits</b>				
210 Group Insurance - Contracted Provider				5,739.74
220 Social Security Contributions				3,008.27
230 PSERS Retirement Contributions				5,863.75
<b>Total Personnel Services - Employee Benefits</b>				<b>\$14,611.76</b>
<b>300 Purchased Professional and Technical Services</b>				
330 Other Professional Services				39,987.16
350 Security / Safety Services				2,036.00
<b>Total Purchased Professional and Technical Services</b>				<b>\$42,023.16</b>
<b>400 Purchased Property Services</b>				
430 Repairs and Maintenance Services				4,860.00
<b>Total Purchased Property Services</b>				<b>\$4,860.00</b>
<b>500 Other Purchased Services</b>				
530 Communications				9,540.00
<b>Total Other Purchased Services</b>				<b>\$9,540.00</b>
<b>600 Supplies</b>				
610 General Supplies	5,445.00	5,445.00		10,890.00
<b>Total Supplies</b>	<b>\$5,445.00</b>	<b>\$5,445.00</b>		<b>\$10,890.00</b>
<b>Total 2660 Safety and Security Services</b>	<b>\$5,445.00</b>	<b>\$5,445.00</b>		<b>\$121,493.59</b>

	<u>Elementary</u>	<u>Secondary</u>	<u>Federal</u>	<u>Total</u>
<b>General Fund (10)</b>				
<b>2700 Student Transportation Services</b>				
<b>100 Personnel Services - Salaries</b>				
100 Personnel Services - Salaries	560,798.51			560,798.51
<b>Total Personnel Services - Salaries</b>	<b>560,798.51</b>			
<b>200 Personnel Services - Employee Benefits</b>				
210 Group Insurance - Contracted Provider	89,607.16			89,607.16
220 Social Security Contributions	42,736.53			42,736.53
230 PSERS Retirement Contributions	183,590.13			183,590.13
250 Unemployment Compensation	1,355.92			1,355.92
260 Workers' Compensation	3,322.30			3,322.30
270 Group Insurance - Self-Insurance	(5,465.52)			(5,465.52)
280 Other Post-Employment Benefits (OPEB)	1,600.00			1,600.00
<b>Total Personnel Services - Employee Benefits</b>	<b>\$316,746.52</b>			
<b>300 Purchased Professional and Technical Services</b>				
330 Other Professional Services	2,084.00			2,084.00
<b>Total Purchased Professional and Technical Services</b>	<b>\$2,084.00</b>			
<b>400 Purchased Property Services</b>				
430 Repairs and Maintenance Services	5,637.59			5,637.59
440 Rentals	282,238.00			282,238.00
<b>Total Purchased Property Services</b>	<b>\$287,875.59</b>			
<b>500 Other Purchased Services</b>				
516 Student Transportation Services From the IU	43,034.45			43,034.45
550 Printing and Binding	824.20			824.20
<b>Total Other Purchased Services</b>	<b>\$43,858.65</b>			
<b>600 Supplies</b>				
610 General Supplies	17,872.28			17,872.28
620 Energy	43,076.26			43,076.26
650 Supplies & Fees -- Technology Related	10,419.50			10,419.50
<b>Total Supplies</b>	<b>\$71,368.04</b>			
<b>Total 2700 Student Transportation Services</b>	<b>\$1,282,731.31</b>			

	<u>Elementary</u>	<u>Secondary</u>	<u>Federal</u>	<u>Total</u>
<b>General Fund (10)</b>				
<b>2710 Supervision of Student Transportation Services</b>				
<b>100 Personnel Services - Salaries</b>				
100 Personnel Services - Salaries				40,319.36
<b>Total Personnel Services - Salaries</b>				<b>\$40,319.36</b>
<b>200 Personnel Services - Employee Benefits</b>				
210 Group Insurance - Contracted Provider				61.44
220 Social Security Contributions				2,952.58
230 PSERS Retirement Contributions				11,639.60
280 Other Post-Employment Benefits (OPEB)				1,600.00
<b>Total Personnel Services - Employee Benefits</b>				<b>\$16,253.62</b>
<b>600 Supplies</b>				
610 General Supplies				129.00
<b>Total Supplies</b>				<b>\$129.00</b>
<b>Total 2710 Supervision of Student Transportation Services</b>				<b>\$56,701.98</b>

	<u>Elementary</u>	<u>Secondary</u>	<u>Federal</u>	<u>Total</u>
<b>General Fund (10)</b>				
<b>2711 Supervision of Student Transportation Services - Head of Component</b>				
<b>100 Personnel Services - Salaries</b>				
100 Personnel Services - Salaries				40,319.36
<b>Total Personnel Services - Salaries</b>				<b>\$40,319.36</b>
<b>200 Personnel Services - Employee Benefits</b>				
210 Group Insurance - Contracted Provider				61.44
220 Social Security Contributions				2,952.58
230 PSERS Retirement Contributions				11,639.60
280 Other Post-Employment Benefits (OPEB)				1,600.00
<b>Total Personnel Services - Employee Benefits</b>				<b>\$16,253.62</b>
<b>600 Supplies</b>				
610 General Supplies				129.00
<b>Total Supplies</b>				<b>\$129.00</b>
<b>Total 2711 Supervision of Student Transportation Services - Head of Component</b>				<b>\$56,701.98</b>



	<u>Elementary</u>	<u>Secondary</u>	<u>Federal</u>	<u>Total</u>
<b>General Fund (10)</b>				
<b>2720 Vehicle Operation Services</b>				
<b>100 Personnel Services - Salaries</b>				
100 Personnel Services - Salaries				421,618.05
<b>Total Personnel Services - Salaries</b>				<b>\$421,618.05</b>
<b>200 Personnel Services - Employee Benefits</b>				
210 Group Insurance - Contracted Provider				53,302.36
220 Social Security Contributions				32,365.19
230 PSERS Retirement Contributions				138,800.16
250 Unemployment Compensation				954.32
260 Workers' Compensation				3,322.30
270 Group Insurance - Self-Insurance				(4,974.42)
<b>Total Personnel Services - Employee Benefits</b>				<b>\$223,789.91</b>
<b>300 Purchased Professional and Technical Services</b>				
330 Other Professional Services				2,084.00
<b>Total Purchased Professional and Technical Services</b>				<b>\$2,084.00</b>
<b>400 Purchased Property Services</b>				
430 Repairs and Maintenance Services				2,080.12
440 Rentals				282,238.00
<b>Total Purchased Property Services</b>				<b>\$284,318.12</b>
<b>500 Other Purchased Services</b>				
516 Student Transportation Services From the IU				43,034.45
550 Printing and Binding				824.20
<b>Total Other Purchased Services</b>				<b>\$43,858.65</b>
<b>600 Supplies</b>				
610 General Supplies				17,066.73
620 Energy				43,076.26
650 Supplies & Fees - Technology Related				10,419.50
<b>Total Supplies</b>				<b>\$70,562.49</b>
<b>Total 2720 Vehicle Operation Services</b>				<b>\$1,046,231.22</b>

	Elementary	Secondary	Federal	Total
<b>General Fund (10)</b>				
<b>2740 Vehicle Servicing and Maintenance Services</b>				
100 Personnel Services - Salaries				57,168.58
100 Personnel Services - Salaries				\$57,168.58
<b>Total Personnel Services - Salaries</b>				
200 Personnel Services - Employee Benefits				28,695.12
210 Group Insurance - Contracted Provider				4,222.51
220 Social Security Contributions				19,603.14
230 PSERS Retirement Contributions				\$52,520.77
<b>Total Personnel Services - Employee Benefits</b>				
400 Purchased Property Services				3,557.47
430 Repairs and Maintenance Services				\$3,557.47
<b>Total Purchased Property Services</b>				
<b>Total 2740 Vehicle Servicing and Maintenance Services</b>				\$113,246.82

	<u>Elementary</u>	<u>Secondary</u>	<u>Federal</u>	<u>Total</u>
<b>General Fund (10)</b>				
<b>2750 Nonpublic Transportation</b>				
<b>100 Personnel Services - Salaries</b>				
100 Personnel Services - Salaries				41,692.52
<b>Total Personnel Services - Salaries</b>				<b>\$41,692.52</b>
<b>200 Personnel Services - Employee Benefits</b>				
210 Group Insurance - Contracted Provider				7,548.24
220 Social Security Contributions				3,176.25
230 PSERS Retirement Contributions				13,547.23
250 Unemployment Compensation				401.80
270 Group Insurance - Self-Insurance				(491.10)
<b>Total Personnel Services - Employee Benefits</b>				<b>\$24,182.22</b>
<b>600 Supplies</b>				
610 General Supplies				676.55
<b>Total Supplies</b>				<b>\$676.55</b>
<b>Total 2750 Nonpublic Transportation</b>				<b>\$66,551.29</b>

	<u>Elementary</u>	<u>Secondary</u>	<u>Federal</u>	<u>Total</u>
<b>General Fund (10)</b>				
<b>2800 Support Services - Central</b>				
<b>100 Personnel Services - Salaries</b>				
100 Personnel Services - Salaries	21,226.94			238,915.12
<b>Total Personnel Services - Salaries</b>	<b>\$21,226.94</b>			<b>\$238,915.12</b>
<b>200 Personnel Services - Employee Benefits</b>				
210 Group Insurance - Contracted Provider	6,547.44			63,653.16
220 Social Security Contributions	1,595.53			17,883.49
230 PSERS Retirement Contributions	7,278.76			81,923.83
<b>Total Personnel Services - Employee Benefits</b>	<b>\$15,421.73</b>			<b>\$163,460.48</b>
<b>300 Purchased Professional and Technical Services</b>				
340 Technical Services				22,160.00
360 Employee Training and Development Services				160.00
<b>Total Purchased Professional and Technical Services</b>				<b>\$22,320.00</b>
<b>400 Purchased Property Services</b>				
430 Repairs and Maintenance Services				67,406.52
440 Rentals				221,118.32
<b>Total Purchased Property Services</b>				<b>\$288,524.84</b>
<b>500 Other Purchased Services</b>				
530 Communications				32,423.49
580 Travel				604.48
<b>Total Other Purchased Services</b>				<b>\$33,027.97</b>
<b>600 Supplies</b>				
610 General Supplies				22,937.47
650 Supplies & Fees - Technology Related				105,101.64
<b>Total Supplies</b>				<b>\$128,039.11</b>
<b>700 Property</b>				
768 Capitalized Technology Software - Replacement				234,463.81
<b>Total Property</b>				<b>\$234,463.81</b>
<b>800 Other Objects</b>				
810 Dues and Fees				329.00
<b>Total Other Objects</b>				<b>\$329.00</b>
<b>Total 2800 Support Services - Central</b>			<b>\$36,648.67</b>	<b>\$1,109,080.33</b>

	Elementary	Secondary	Federal	Total
<b>General Fund (10)</b>				
<b>2810 Planning, Research, Development and Evaluation Services</b>				
<b>100 Personnel Services - Salaries</b>				
100 Personnel Services - Salaries				217,688.18
<b>Total Personnel Services - Salaries</b>				<b>\$217,688.18</b>
<b>200 Personnel Services - Employee Benefits</b>				
210 Group Insurance - Contracted Provider				57,105.72
220 Social Security Contributions				16,287.96
230 PSERS Retirement Contributions				74,645.07
<b>Total Personnel Services - Employee Benefits</b>				<b>\$148,038.75</b>
<b>300 Purchased Professional and Technical Services</b>				
340 Technical Services				22,160.00
<b>Total Purchased Professional and Technical Services</b>				<b>\$22,160.00</b>
<b>400 Purchased Property Services</b>				
430 Repairs and Maintenance Services				67,406.52
440 Rentals				221,118.32
<b>Total Purchased Property Services</b>				<b>\$288,524.84</b>
<b>500 Other Purchased Services</b>				
530 Communications				32,423.49
<b>Total Other Purchased Services</b>				<b>\$32,423.49</b>
<b>600 Supplies</b>				
610 General Supplies				22,937.47
650 Supplies & Fees - Technology Related				105,101.64
<b>Total Supplies</b>				<b>\$128,039.11</b>
<b>700 Property</b>				
768 Capitalized Technology Software - Replacement				234,463.81
<b>Total Property</b>				<b>\$234,463.81</b>
<b>Total 2810 Planning, Research, Development and Evaluation Services</b>				<b>\$1,071,338.18</b>

	Elementary	Secondary	Federal	Total
<b>General Fund (10)</b>				
<b>2830 Staff Services</b>				
300 Purchased Professional and Technical Services				
360 Employee Training and Development Services				160.00
<b>Total Purchased Professional and Technical Services</b>				<b>\$160.00</b>
<b>500 Other Purchased Services</b>				
580 Travel				604.48
<b>Total Other Purchased Services</b>				<b>\$604.48</b>
<b>800 Other Objects</b>				
810 Dues and Fees				329.00
<b>Total Other Objects</b>				<b>\$329.00</b>
<b>Total 2830 Staff Services</b>				<b>\$1,093.48</b>

	<u>Elementary</u>	<u>Secondary</u>	<u>Federal</u>	<u>Total</u>
<b>General Fund (10)</b>				
<b>2834 Staff Development Services – Non-Instructional, Certified Staff Only</b>				
<b>300 Purchased Professional and Technical Services</b>				
360 Employee Training and Development Services				160.00
<b>Total Purchased Professional and Technical Services</b>				<b>\$160.00</b>
<b>500 Other Purchased Services</b>				
580 Travel				604.48
<b>Total Other Purchased Services</b>				<b>\$604.48</b>
<b>800 Other Objects</b>				
810 Dues and Fees				329.00
<b>Total Other Objects</b>				<b>\$329.00</b>
<b>Total 2834 Staff Development Services – Non-Instructional, Certified Staff Only</b>				<b>\$1,093.48</b>

	Elementary	Secondary	Federal	Total
<b>General Fund (10)</b>				
<b>2850 State and Federal Agency Liaison Services</b>				
100 Personnel Services - Salaries				
100 Personnel Services - Salaries				
<b>Total Personnel Services - Salaries</b>				
	21,226.94			21,226.94
	<b>\$21,226.94</b>			<b>\$21,226.94</b>
<b>200 Personnel Services - Employee Benefits</b>				
210 Group Insurance - Contracted Provider				
220 Social Security Contributions				
230 PSERS Retirement Contributions				
<b>Total Personnel Services - Employee Benefits</b>				
	6,547.44			6,547.44
	1,595.53			1,595.53
	7,278.76			7,278.76
<b>Total Personnel Services - Employee Benefits</b>				
	<b>\$15,421.73</b>			<b>\$15,421.73</b>
<b>Total 2850 State and Federal Agency Liaison Services</b>				
	<b>\$36,648.67</b>			<b>\$36,648.67</b>



<b>General Fund (10)</b>		
<b>3000 Operation of Non-Instructional Services</b>		
<b>100 Personnel Services - Salaries</b>		<u>Total</u>
100 Personnel Services - Salaries	531,639.89	
<b>Total Personnel Services - Salaries</b>	<b>\$531,639.89</b>	
<b>200 Personnel Services - Employee Benefits</b>		
210 Group Insurance - Contracted Provider	10,200.24	
220 Social Security Contributions	40,398.56	
230 PSERS Retirement Contributions	168,330.56	
250 Unemployment Compensation	853.22	
260 Workers' Compensation	3,986.76	
<b>Total Personnel Services - Employee Benefits</b>	<b>\$223,769.34</b>	
<b>300 Purchased Professional and Technical Services</b>		
330 Other Professional Services	10,000.00	
<b>Total Purchased Professional and Technical Services</b>	<b>\$10,000.00</b>	
<b>400 Purchased Property Services</b>		
410 Clearing Services	1,841.00	
430 Repairs and Maintenance Services	45,236.80	
440 Rentals	2,369.28	
<b>Total Purchased Property Services</b>	<b>\$49,447.08</b>	
<b>500 Other Purchased Services</b>		
549 Other Advertising/Public Relations	150.00	
580 Travel	22.40	
<b>Total Other Purchased Services</b>	<b>\$172.40</b>	
<b>600 Supplies</b>		
610 General Supplies	212,950.53	
<b>Total Supplies</b>	<b>\$212,950.53</b>	
<b>800 Other Objects</b>		
890 Miscellaneous Expenditures	1,762.00	
<b>Total Other Objects</b>	<b>\$1,762.00</b>	
<b>Total 3000 Operation of Non-Instructional Services</b>	<b>\$1,029,741.24</b>	

	<u>Elementary</u>	<u>Secondary</u>	<u>Federal</u>	<u>Total</u>
<b>General Fund (10)</b>				
<b>3200 Student Activities</b>				
<b>100 Personnel Services - Salaries</b>				
100 Personnel Services - Salaries	502,930.10			502,930.10
<b>Total Personnel Services - Salaries</b>				<b>\$502,930.10</b>
<b>200 Personnel Services - Employee Benefits</b>				
210 Group Insurance - Contracted Provider	10,200.24			10,200.24
220 Social Security Contributions	38,228.71			38,228.71
230 PSERS Retirement Contributions	161,506.13			161,506.13
250 Unemployment Compensation	853.22			853.22
260 Workers' Compensation	3,986.76			3,986.76
<b>Total Personnel Services - Employee Benefits</b>				<b>\$214,775.06</b>
<b>300 Purchased Professional and Technical Services</b>				
330 Other Professional Services	10,000.00			10,000.00
<b>Total Purchased Professional and Technical Services</b>				<b>\$10,000.00</b>
<b>400 Purchased Property Services</b>				
410 Cleaning Services	1,841.00			1,841.00
430 Repairs and Maintenance Services	45,236.80			45,236.80
440 Rentals	2,369.28			2,369.28
<b>Total Purchased Property Services</b>				<b>\$49,447.08</b>
<b>500 Other Purchased Services</b>				
580 Travel	22.40			22.40
<b>Total Other Purchased Services</b>				<b>\$22.40</b>
<b>600 Supplies</b>				
610 General Supplies	201,668.59			201,668.59
<b>Total Supplies</b>				<b>\$201,668.59</b>
<b>800 Other Objects</b>				
890 Miscellaneous Expenditures	1,762.00			1,762.00
<b>Total Other Objects</b>				<b>\$1,762.00</b>
<b>Total 3200 Student Activities</b>				<b>\$980,605.23</b>

	<u>Elementary</u>	<u>Secondary</u>	<u>Federal</u>	<u>Total</u>
<b>General Fund (10)</b>				
<b>3300 Community Services</b>				
<b>100 Personnel Services - Salaries</b>				
100 Personnel Services - Salaries	216.00			28,709.79
<b>Total Personnel Services - Salaries</b>	<b>\$216.00</b>			<b>\$28,709.79</b>
<b>200 Personnel Services - Employee Benefits</b>				
220 Social Security Contributions			16.17	2,169.85
230 PSERS Retirement Contributions			74.07	6,824.43
<b>Total Personnel Services - Employee Benefits</b>			<b>\$90.24</b>	<b>\$8,994.28</b>
<b>600 Supplies</b>				
610 General Supplies			8,855.21	11,281.94
<b>Total Supplies</b>			<b>\$8,855.21</b>	<b>\$11,281.94</b>
<b>Total 3300 Community Services</b>			<b>\$9,161.45</b>	<b>\$48,986.01</b>

	<u>Elementary</u>	<u>Secondary</u>	<u>Federal</u>	<u>Total</u>
<b>General Fund (10)</b>				
<b>3400 Scholarships and Awards</b>				
500 Other Purchased Services				150.00
549 Other Advertising/Public Relations				\$150.00
<b>Total Other Purchased Services</b>				\$150.00
<b>Total 3400 Scholarships and Awards</b>				\$150.00

	<u>Total</u>
<b>General Fund (10)</b>	
5000 Other Expenditures and Financing Uses	
800 Other Objects	
830 Interest	189,205.66
880 Refunds of Prior Years' Receipts	17.23
<b>Total Other Objects</b>	<b>\$189,222.89</b>
900 Other Uses of Funds	
910 Redemption of Principal	1,632,606.03
<b>Total Other Uses of Funds</b>	<b>\$1,632,606.03</b>
<b>Total 5000 Other Expenditures and Financing Uses</b>	<b>\$1,821,828.92</b>

General Fund (10)	Elementary	Secondary	Federal	Total
5100 Debt Service / Other Expenditures and Financing Uses				
800 Other Objects				
830 Interest				189,205.66
880 Refunds of Prior Years Receipts				17.23
<b>Total Other Objects</b>				<b>\$189,222.89</b>
900 Other Uses of Funds				
910 Redemption of Principal				1,632,606.03
<b>Total Other Uses of Funds</b>				<b>\$1,632,606.03</b>
<b>Total 5100 Debt Service / Other Expenditures and Financing Uses</b>				<b>\$1,821,828.92</b>

	<u>Elementary</u>	<u>Secondary</u>	<u>Federal</u>	<u>Total</u>
General Fund (10)				
5110 Debt Service				
800 <u>Other Objects</u>				
830 Interest				189,205.66
<b>Total Other Objects</b>				<b>\$189,205.66</b>
900 <u>Other Uses of Funds</u>				
910 Redemption of Principal				1,632,606.03
<b>Total Other Uses of Funds</b>				<b>\$1,632,606.03</b>
<b>Total 5110 Debt Service</b>				<b>\$1,821,811.69</b>

LEA : 129546103 Pottsville Area SD

Printed 11/19/2020 9:36:21 PM

	<u>Elementary</u>	<u>Secondary</u>	<u>Federal</u>	<u>Total</u>
<b>General Fund (10)</b>				
<b>5130 Refund of Prior Year Revenues / Receipts</b>				
800 <u>Other Objects</u>				17.23
880 Refunds of Prior Years Receipts				\$17.23
<b>Total Other Objects</b>				\$17.23
<b>Total 5130 Refund of Prior Year Revenues / Receipts</b>				\$17.23



Capital Reserve Fund - \$ 1431 (32)

2000 Support Services

700 Property

752 Capital Equipment— Original and Additional

Total Property

Total 2000 Support Services

Total

17,410.00

\$17,410.00

\$17,410.00

LEA : 129546103 Pottsville Area SD

Printed 11/19/2020 9:36:11 PM

Capital Reserve Fund - \$ 1431 (32)

2600 Operation and Maintenance of Plant Services

700 Property

752 Capital Equipment - Original and Additional

Total Property

Total 2600 Operation and Maintenance of Plant Services

	<u>Elementary</u>	<u>Secondary</u>	<u>Federal</u>	<u>Total</u>
				17,410.00
				\$17,410.00
				\$17,410.00

Capital Reserve Fund - \$ 1431 (32)

2650 Vehicle Operation and Maintenance Services (Other Than Student Transportation Vehicles)

	<u>Elementary</u>	<u>Secondary</u>	<u>Federal</u>	<u>Total</u>
700 <u>Property</u>				
752 Capital Equipment - Original and Additional				17,410.00
<b>Total Property</b>				<b>\$17,410.00</b>
<b>Total 2650 Vehicle Operation and Maintenance Services (Other Than Student Transportation Vehicles)</b>				<b>\$17,410.00</b>

	<u>Total</u>
Other Capital Projects Fund (39)	
5000 Other Expenditures and Financing Uses	
900 Other Uses of Funds	
990 Miscellaneous Other Uses of Funds	6.85
<b>Total Other Uses of Funds</b>	<b>\$6.85</b>
<b>Total 5000 Other Expenditures and Financing Uses</b>	<b>\$6.85</b>

	<u>Elementary</u>	<u>Secondary</u>	<u>Federal</u>	<u>Total</u>
Other Capital Projects Fund (39)				
5100 Debt Service / Other Expenditures and Financing Uses				
900 Other Uses of Funds				
990 Miscellaneous Other Uses of Funds				6.85
<b>Total Other Uses of Funds</b>				<b>\$6.85</b>
<b>Total 5100 Debt Service / Other Expenditures and Financing Uses</b>				<b>\$6.85</b>

	<u>Elementary</u>	<u>Secondary</u>	<u>Federal</u>	<u>Total</u>
Other Capital Projects Fund (39)				
5110 Debt Service				
900 Other Uses of Funds				
990 Miscellaneous Other Uses of Funds				6.85
<b>Total Other Uses of Funds</b>				<b>\$6.85</b>
<b>Total 5110 Debt Service</b>				<b>\$6.85</b>

	General Fund(10)	Student Sponsored Activity Fund(21)	Public Purpose Trust(27)	Other Compt Approved (28)	Athletic / Activity(29)
<b>1000 Instruction</b>					
1100 Regular Programs - Elementary / Secondary	15,995,183.15				
1200 Special Programs - Elementary / Secondary	8,787,347.69				
1300 Vocational Education	1,211,807.43				
1400 Other Instructional Programs - Elementary / Secondary	478,469.15				
1500 Nonpublic School Programs	41,292.53				
<b>Total Instruction</b>	<b>\$26,514,099.95</b>				
<b>2000 Support Services</b>					
2100 Support Services - Students	1,215,299.81				
2200 Support Services - Instructional Staff	962,192.18				
2300 Support Services - Administration	2,522,166.19				
2400 Support Services - Pupil Health	505,603.80				
2500 Support Services - Business	802,440.18				
2600 Operation and Maintenance of Plant Services	3,412,312.75				
2700 Student Transportation Services	1,282,731.31				
2800 Support Services - Central	1,109,080.33				
<b>Total Support Services</b>	<b>\$11,811,826.55</b>				
<b>3000 Operation of Non-Instructional Services</b>					
3200 Student Activities	980,605.23				
3300 Community Services	48,986.01				
3400 Scholarships and Awards	150.00				
<b>Total Operation of Non-Instructional Services</b>	<b>\$1,029,741.24</b>				
<b>5000 Other Expenditures and Financing Uses</b>					
5100 Debt Service / Other Expenditures and Financing Uses	1,821,828.92				
<b>Total Other Expenditures and Financing Uses</b>	<b>\$1,821,828.92</b>				
<b>TOTAL ACTUAL EXPENDITURES &amp; OTHER FINANCING USES</b>	<b>\$41,177,496.66</b>				

Capital Reserve (690, Capital Reserve (1431)(32) Other Capital Projects Fund(39) Debt Service(40) Permanent(90)

1000 Instruction	Capital Reserve (690, Capital Reserve (1431)(32)	Other Capital Projects Fund(39)	Debt Service(40)	Permanent(90)
1100 Regular Programs - Elementary / Secondary				
1200 Special Programs - Elementary / Secondary				
1300 Vocational Education				
1400 Other Instructional Programs - Elementary / Secondary				
1500 Nonpublic School Programs				
<b>Total Instruction</b>				
2000 Support Services				
2100 Support Services - Students				
2200 Support Services - Instructional Staff				
2300 Support Services - Administration				
2400 Support Services - Pupil Health				
2500 Support Services - Business				
2600 Operation and Maintenance of Plant Services			17,410.00	
2700 Student Transportation Services				
2800 Support Services - Central				
<b>Total Support Services</b>			\$17,410.00	
3000 Operation of Non-Instructional Services				
3200 Student Activities				
3300 Community Services				
3400 Scholarships and Awards				
<b>Total Operation of Non-Instructional Services</b>				
5000 Other Expenditures and Financing Uses				6.85
5100 Debt Service / Other Expenditures and Financing Uses				\$6.85
<b>Total Other Expenditures and Financing Uses</b>			\$17,410.00	\$6.85
<b>TOTAL ACTUAL EXPENDITURES &amp; OTHER FINANCING USES</b>				



	<u>Total</u>
<b>1000 Instruction</b>	
1100 Regular Programs - Elementary / Secondary	15,995,183.15
1200 Special Programs - Elementary / Secondary	8,787,347.69
1300 Vocational Education	1,211,807.43
1400 Other Instructional Programs - Elementary / Secondary	478,469.15
1500 Nonpublic School Programs	41,292.53
<b>Total Instruction</b>	<b>\$26,514,099.95</b>
<b>2000 Support Services</b>	
2100 Support Services - Students	1,215,299.81
2200 Support Services - Instructional Staff	962,192.18
2300 Support Services - Administration	2,522,166.19
2400 Support Services - Pupil Health	505,603.80
2500 Support Services - Business	802,440.18
2600 Operation and Maintenance of Plant Services	3,429,722.75
2700 Student Transportation Services	1,282,731.31
2800 Support Services - Central	1,109,080.33
<b>Total Support Services</b>	<b>\$11,829,236.55</b>
<b>3000 Operation of Non-Instructional Services</b>	
3200 Student Activities	980,605.23
3300 Community Services	48,986.01
3400 Scholarships and Awards	150.00
<b>Total Operation of Non-Instructional Services</b>	<b>\$1,029,741.24</b>
<b>5000 Other Expenditures and Financing Uses</b>	
5100 Debt Service / Other Expenditures and Financing Uses	1,821,835.77
<b>Total Other Expenditures and Financing Uses</b>	<b>\$1,821,835.77</b>
<b>TOTAL ACTUAL EXPENDITURES &amp; OTHER FINANCING USES</b>	<b>\$41,194,913.51</b>

**PSERS Salary Data (Salary Data should relate to the General Fund only)**

Amount Description	Amount
Total Salary Base for salaries subject to PSERS withholding	16,138,268.32
Total Federally Funded salaries subject to PSERS withholding	664,562.41

**Title I Expenditure Data**

Amount Description	Amount
Expenditures Funded with Current Title I Funds	749,311.00
Expenditures Funded with Carry over Title I Funds	
<b>Total Title I Expenditure Data</b>	<b>\$749,311.00</b>

Benefits for Staff Relative to Collective Bargaining Agreements

OBJECT	COVERED	NOT COVERED	TOTAL
<b>10 General Fund</b>			
No Self Insurance data to report			
211 Medical Insurance	5,863,882.64		5,863,882.64
212 Dental Insurance	248,969.57		248,969.57
215 Eye Care Insurance	21,570.77		21,570.77
216 Prescription Insurance			
271 Self-Insurance Medical Benefits			
272 Self-Insurance Dental Benefits			
275 Self-Insurance Eye Care Benefits			
276 Self-Insurance Prescription Benefits			
<b>FUND TOTAL</b>	<b>\$6,134,422.98</b>		<b>\$6,134,422.98</b>
<b>50 Enterprise Fund</b>			
No Self Insurance data to report			
211 Medical Insurance			
212 Dental Insurance			
215 Eye Care Insurance			
216 Prescription Insurance			
271 Self-Insurance Medical Benefits			
272 Self-Insurance Dental Benefits			
275 Self-Insurance Eye Care Benefits			
276 Self-Insurance Prescription Benefits			
<b>FUND TOTAL</b>			
<b>60 Internal Service Fund</b>			
No Self Insurance data to report			
211 Medical Insurance			
212 Dental Insurance			
215 Eye Care Insurance			
216 Prescription Insurance			
271 Self-Insurance Medical Benefits			
272 Self-Insurance Dental Benefits			
275 Self-Insurance Eye Care Benefits			
276 Self-Insurance Prescription Benefits			
<b>FUND TOTAL</b>			
<b>Total of All Funds</b>	<b>\$6,134,422.98</b>		<b>\$6,134,422.98</b>

Function	Special Education (Prior Year)	Nonspecial Education (Prior Year)	Total (Prior Year)	Special Education (Current Year)	Nonspecial Education (Current Year)	Total (Current Year)
2120 Guidance Services	80,904.95	297,155.57	378,060.52	110,392.91	355,178.72	465,571.63
2140 Psychological Services	58,289.76	153,636.72	211,926.48	69,236.86	207,710.60	276,947.46
2150 Speech Pathology and Audiology Services						
2160 Social Work Services	59,972.11	220,271.40	280,243.51	68,186.24	204,564.72	272,752.96
2260 Instruction and Curriculum Development Services	87,074.40	319,815.34	406,889.74	110,179.16	330,537.47	440,716.63
2350 Legal and Accounting Services	15,444.11	56,724.64	72,168.75	20,994.08	102,982.22	123,976.30
2420 Medical Services	2,250.16	9,465.34	11,715.50	1,473.27	4,419.80	5,893.07
2440 Nursing Services	83,514.72	299,981.25	383,495.97	98,376.62	295,129.86	393,506.48
2700 Student Transportation Services	265,296.88	974,408.18	1,239,705.06	278,195.63	834,586.88	1,112,782.51
<b>Total</b>	<b>\$652,747.09</b>	<b>\$2,331,458.44</b>	<b>\$2,984,205.53</b>	<b>\$757,036.77</b>	<b>\$2,335,110.27</b>	<b>\$3,092,147.04</b>

(PRINCIPAL AMOUNTS ONLY)

**GOVERNMENTAL FUNDS/ACTIVITIES**

	Short-Term Borrowing	General Obligation Bonds/Notes	Authority Building Obligations	Other Long-Term Debt	Other Post-Employment Benefits (OPEB)	Compensated Absences	Net Pension Liability	Total
1. Debt at Beginning of Fiscal Year		5,390,000.00		3,415,641.60	4,969,611.00	608,299.63	58,593,636.00	72,977,188.23
2. Additional Debt Incurred During Year				206,877.64		200,805.37		407,683.01
3. Retirements and Repayments		430,000.00		1,202,606.03	43,050.00		2,748,483.00	4,424,139.03
4. Debt at End of Fiscal Year		4,960,000.00		2,419,913.21	4,926,561.00	809,105.00	55,845,153.00	68,960,732.21
5. Accreted Interest at End Of Fiscal Year								
6. Total Debt and Accreted Interest		4,960,000.00		2,419,913.21	4,926,561.00	809,105.00	55,845,153.00	68,960,732.21
7. Current Portion P&I - Due within 1 year		582,482.50		627,097.36		75,000.00		1,284,579.86
8. Interest Paid during current fiscal year		140,245.53		48,960.13				189,205.66

(PRINCIPAL AMOUNTS ONLY)

**PROPRIETARY FUNDS**

	Short-Term Borrowing	General Obligation Bonds/Notes	Authority Building Obligations	Other Long-Term Debt	Other Post-Employment Benefits (OPEB)	Compensated Absences	Net Pension Liability	Total
1. Debt at Beginning of Fiscal Year					159,516.00		2,420,364.00	2,579,880.00
2. Additional Debt Incurred During Year					3,662.00			3,662.00
3. Retirements and Repayments							114,517.00	114,517.00
4. Debt at End of Fiscal Year					163,178.00		2,305,847.00	2,469,025.00
5. Accreted Interest at End Of Fiscal Year								
6. Total Debt and Accreted Interest					163,178.00		2,305,847.00	2,469,025.00
7. Current Portion P&I - Due within 1 year								
8. Interest Paid during current fiscal year								

**Total Principal and Interest Payments Made by Your School - All Funds**

Function	Fund	Principal (910)	Principal (920)	Interest (830)	Total (Principal +Interest)	Misc Other Uses (990)
5110	10	1,632,606.03		189,205.66	1,821,811.69	
5110	20		Special Revenue Funds			
5110	30		Capital Projects Funds			
5110	40		Debt Service Fund			6.85
5110	90		Permanent Fund			
5120	10		General Fund			
5120	20		Special Revenue Funds			
5120	30		Capital Projects Funds			
5120	40		Debt Service Fund			
<b>Total Debt Payments - Governmental Funds</b>		<b>\$1,632,606.03</b>		<b>\$189,205.66</b>	<b>\$1,821,811.69</b>	<b>\$6.85</b>

Function	Fund	Principal (910)	Principal (920)	Interest (830)	Total (Principal +Interest)
5110	50		Enterprise Fund		
5110	60		Internal Service Fund		
5120	50		Enterprise Fund		
5120	60		Internal Service Fund		
<b>Total Debt Payments - Proprietary Funds</b>					

Debt Category	Debt Issue Date (MM/YYYY)	Principal Amounts Only			Debt at End of Fiscal Year	Current Portion Due Within One Year (Principal and Interest)	Interest Paid During Fiscal Year
		Debt at Beginning of Fiscal Year	Additions	Reductions / Repayments			
General Obligation Bonds/Notes - CIB	02/2016	2,675,000.00		155,000.00	2,520,000.00	248,212.50	80,425.53
General Obligation Bonds/Notes - CIB	08/2012	2,715,000.00		275,000.00	2,440,000.00	334,270.00	59,820.00
Extended Term Financing Agreements		3,415,641.60	206,877.64	1,202,606.03	2,419,913.21	627,097.36	48,960.13
Compensated Absences		608,299.63	200,805.37		809,105.00	75,000.00	
Other Post-Employment Benefits (OPEB)		4,969,611.00		43,050.00	4,926,561.00		
Net Pension Liability		58,593,636.00		2,748,483.00	55,845,153.00		
<b>Totals for Debt Entered:</b>		<b>\$72,977,188.23</b>	<b>\$407,683.01</b>	<b>\$4,424,139.03</b>	<b>\$68,960,732.21</b>	<b>\$1,284,579.86</b>	<b>\$189,205.66</b>

Debt Category	Debt Issue Date (MM/YYYY)	Principal Amounts Only			Debt at End of Fiscal Year	Current Portion Due Within One Year (Principal and Interest)	Interest Paid During Fiscal Year
		Debt at Beginning of Fiscal Year	Additions	Reductions / Repayments			
Other Post-Employment Benefits (OPEB)		159,516.00	3,662.00		163,178.00		
Net Pension Liability		2,420,364.00		114,517.00	2,305,847.00		
<b>Totals for Debt Entered:</b>		<b>\$2,579,880.00</b>	<b>\$3,662.00</b>	<b>\$114,517.00</b>	<b>\$2,469,025.00</b>		

General Fund (10)

**Section 1: Tuition/Purchased Services as Reported within Expenditure Detail**

	Amount
Tuition Reported in General Fund Expenditures 1000-560	3,821,443.07
Purchased Services in General Fund Expenditures 1000-594 and 1000-597	
<b>Section 1 Total</b>	<b>\$3,821,443.07</b>

**Section 2: Tuition Paid to Institution Types During Fiscal Year**

	Tuition Paid For Nonspecial Education	Tuition Paid For Special Education	Total
1 1306 Institutions			
2 Institutionalized Children's Programs			
3 Juveniles Incarcerated in Adult Facilities		93,254.70	93,254.70
4 Residential Treatment Facilities			
5 Other Local Education Agencies	700,822.10	731,647.97	1,432,470.07
6 Brick and Mortar Charter Schools	674,715.44	790,237.22	1,464,952.66
7 Cyber Charter Schools	777,650.45		777,650.45
8 Career and Technology Centers			
9 Approved Private Schools	5,796.85		5,796.85
10 PA Chartered Schools for the Deaf and Blind			
11 Private Residential Rehabilitative Institutions			
12 Juvenile Detention Centers			
13 Special Program Jointures			
14 Other Tuition Not Included Elsewhere in This Section		47,318.34	47,318.34
<b>Section 2 Total</b>	<b>\$2,156,984.84</b>	<b>\$1,662,458.23</b>	<b>\$3,821,443.07</b>



1. Student Transportation Services for Educational Field Trips

2. Student Transportation Services for Student Activities

38,090.00

3. Rental of Vehicles for Student Transportation Services

4. Capital Reserve Funds

Include only district-owned transportation expenditures paid from State or local money.  
DO NOT include federal expenditures or payments to contract service providers.  
Contracted transportation services should not be recorded on this schedule.

	<u>Total</u>
<b>Food Service / Cafeteria Operations Fund (51)</b>	
<b>3000 Operation of Non-Instructional Services</b>	
<b>100 Personnel Services - Salaries</b>	
100 Personnel Services - Salaries	698,524.08
<b>Total Personnel Services - Salaries</b>	<b>\$698,524.08</b>
<b>200 Personnel Services - Employee Benefits</b>	
210 Group Insurance - Contracted Provider	216,054.55
220 Social Security Contributions	52,385.36
230 PSERS Retirement Contributions	236,424.50
270 Group Insurance - Self-Insurance	72.40
280 Other Post-Employment Benefits (OPEB)	8,980.00
291 Other Retirement Plans	(59,239.00)
<b>Total Personnel Services - Employee Benefits</b>	<b>\$454,677.81</b>
<b>400 Purchased Property Services</b>	
430 Repairs and Maintenance Services	12,352.54
<b>Total Purchased Property Services</b>	<b>\$12,352.54</b>
<b>600 Supplies</b>	
610 General Supplies	37,131.13
630 Food	644,719.09
<b>Total Supplies</b>	<b>\$681,850.22</b>
<b>700 Property</b>	
740 Depreciation	1,381.30
<b>Total Property</b>	<b>\$1,381.30</b>
<b>800 Other Objects</b>	
810 Dues and Fees	304.00
890 Miscellaneous Expenditures	260.00
<b>Total Other Objects</b>	<b>\$564.00</b>
<b>Total 3000 Operation of Non-Instructional Services</b>	<b>\$1,849,349.95</b>

	<u>Elementary</u>	<u>Secondary</u>	<u>Federal</u>	<u>Total</u>
<b>Food Service / Cafeteria Operations Fund (51)</b>				
<b>3100 Food Services</b>				
<b>100 Personnel Services – Salaries</b>				
100 Personnel Services – Salaries				698,524.08
<b>Total Personnel Services – Salaries</b>				<b>\$698,524.08</b>
<b>200 Personnel Services – Employee Benefits</b>				
210 Group Insurance – Contracted Provider				216,054.55
220 Social Security Contributions				52,385.36
230 PSERS Retirement Contributions				236,424.50
270 Group Insurance – Self-Insurance				72.40
280 Other Post-Employment Benefits (OPEB)				8,980.00
291 Other Retirement Plans				(59,239.00)
<b>Total Personnel Services – Employee Benefits</b>				<b>\$454,677.81</b>
<b>400 Purchased Property Services</b>				
430 Repairs and Maintenance Services				12,352.54
<b>Total Purchased Property Services</b>				<b>\$12,352.54</b>
<b>600 Supplies</b>				
610 General Supplies				37,131.13
630 Food				644,719.09
<b>Total Supplies</b>				<b>\$681,850.22</b>
<b>700 Property</b>				
740 Depreciation				1,381.30
<b>Total Property</b>				<b>\$1,381.30</b>
<b>800 Other Objects</b>				
810 Dues and Fees				304.00
890 Miscellaneous Expenditures				260.00
<b>Total Other Objects</b>				<b>\$564.00</b>
<b>Total 3100 Food Services</b>				<b>\$1,849,349.95</b>

	Food Service(51)	Child Care Operations(52)	Other Enterprise(58)	Internal Service(60)	Total
3000 Operation of Non-Instructional Services					
3100 Food Services	1,849,349.95				1,849,349.95
<b>Total Operation of Non-Instructional Services</b>	<b>\$1,849,349.95</b>				<b>\$1,849,349.95</b>
<b>TOTAL ACTUAL EXPENDITURES &amp; OTHER FINANCING USES</b>	<b>\$1,849,349.95</b>				<b>\$1,849,349.95</b>

Fund	School	School Number	Local Personnel	Local Nonpersonnel	State Personnel	State Nonpersonnel	Federal Personnel	Federal Nonpersonnel	Total Explanation
	Clarke El Ctr	3915	8,542,098.36	1,314,561.87	221,442.70	3,403.13	330,801.16	20,462.22	10,432,769.44
	Lengel MS	5265	8,312,486.75	1,279,226.44	215,490.32	3,311.65	321,909.22	19,912.19	10,152,336.57
	Pottsville Area HS	3924	10,480,129.63	1,612,809.66	271,683.62	4,175.23	405,853.32	25,104.69	12,799,756.15
<b>Total</b>			<b>27,334,714.74</b>	<b>4,206,597.97</b>	<b>708,616.64</b>	<b>10,890.01</b>	<b>1,058,563.70</b>	<b>65,479.10</b>	<b>33,384,862.16</b>

	Nonspecial Education	Special Education
<b>2000 Support Services</b>		
2100 Support Services - Students	6,612.00	4,989.00
<b>Total Support Services</b>	<b>\$6,612.00</b>	<b>\$4,989.00</b>
<b>TOTAL ACTUAL EXPENDITURES &amp; OTHER FINANCING USES</b>	<b>\$6,612.00</b>	<b>\$4,989.00</b>

LEA : 129546103 Pottsville Area SD

Printed 11/19/2020 9:37:51 PM

**2000 Support Services**

**100 Personnel Services - Salaries**

100 Personnel Services - Salaries

4,688.00 3,537.00  
**\$4,688.00 \$3,537.00**

**200 Personnel Services - Employee Benefits**

220 Social Security Contributions

316.00 239.00

230 PSERS Retirement Contributions

1,608.00 1,213.00

**Total Personnel Services - Employee Benefits**

**\$1,924.00 \$1,452.00**

**Total 2000 Support Services**

**\$6,612.00 \$4,989.00**

	Nonspecial Education	Special Education
<b>2100 Support Services - Students</b>		
<b>100 Personnel Services - Salaries</b>		
100 Personnel Services - Salaries	4,688.00	3,537.00
<b>Total Personnel Services - Salaries</b>	<b>\$4,688.00</b>	<b>\$3,537.00</b>
<b>200 Personnel Services - Employee Benefits</b>		
220 Social Security Contributions	316.00	239.00
230 PSERS Retirement Contributions	1,608.00	1,213.00
<b>Total Personnel Services - Employee Benefits</b>	<b>\$1,924.00</b>	<b>\$1,452.00</b>
<b>Total 2100 Support Services - Students</b>	<b>\$6,612.00</b>	<b>\$4,989.00</b>



	Nonspecial Education	Special Education
<b>2190 Other Student Services</b>		
100 Personnel Services - Salaries		
100 Personnel Services - Salaries	4,688.00	3,537.00
<b>Total Personnel Services - Salaries</b>	<b>\$4,688.00</b>	<b>\$3,537.00</b>
<b>200 Personnel Services - Employee Benefits</b>		
220 Social Security Contributions	316.00	239.00
230 PSERS Retirement Contributions	1,608.00	1,213.00
<b>Total Personnel Services - Employee Benefits</b>	<b>\$1,924.00</b>	<b>\$1,452.00</b>
<b>Total 2190 Other Student Services</b>	<b>\$6,612.00</b>	<b>\$4,989.00</b>

	<u>Nonspecial Education</u>	<u>Special Education</u>
6000 Revenue from Local Sources		
Total Revenue from Local Sources	\$69,779	\$52,640
Total	\$69,779	\$52,640
<b>TOTAL REVENUES</b>	<b>\$69,779</b>	<b>\$52,640</b>

	<u>Nonspecial Education</u>	<u>Special Education</u>
<b>6000 Revenue from Local Sources</b>		
6944 Receipts from Other LEAs in Pennsylvania - Education	69,779	52,640
<b>Total Revenue from Local Sources</b>	<b>\$69,779</b>	<b>\$52,640</b>
<b>TOTAL</b>	<b>\$69,779</b>	<b>\$52,640</b>
<b>TOTAL REVENUES</b>	<b>\$69,779</b>	<b>\$52,640</b>

