

LEA Name : Pottsville Area SD  
Address : 1501 W Laurel Blvd  
Pottsville , PA 17901

County : Schuylkill  
AUN Number : 129546103  
LEA Type : SD

## Annual Financial Report Accuracy Certification Statement

For Fiscal Year Ending  
6/30/2021

Pennsylvania Department of Education  
&  
Office of Comptroller Operations

PDE-2056: Intermediate Unit  
PDE-2057: School District, AVTS/CTC, Charter School,  
and Special Program Jointure

**CERTIFICATION: By signing this page I agree that the electronic data submitted is a complete and accurate statement of the financial operations and status of the local education agency for the fiscal year. It has been prepared in accordance with generally accepted accounting principles and established Commonwealth of PA reporting guidelines.**

Sarah Hoden  
Chief School Administrator Signature

11-19-21  
Date

Patricia A. Lomuel  
Board Secretary Signature

11-19-21  
Date

Stacy Stair  
Contact Person

(570)621-2904 Ext :  
Contact Person Telephone Number

sstair@pottsville.k12.pa.us  
Contact Person E-mail Address

Contact Person Fax Number

**Audit Certification**  
**Annual Financial Report:**  
For Fiscal Year Ending **6/30/2021**  
(Pursuant to PA School Code Section 218(b))

LEA Name : Pottsville Area SD  
AUN Number : 129546103  
County : Schuylkill

<b>Audit Certification Due:</b> 12/31/2021
---

---

This certification is applicable to the Annual Financial Report data submitted through the Consolidated Financial Reporting System (CFRS).

CERTIFICATION: By signing this page I agree that the financial statements of the school have been properly audited as noted above pursuant to Article XXIV, and in the auditor's professional opinion, the Annual Financial Report (PDE-2057) submitted through CFRS is materially consistent with the audited financial statements.

Chief School Administrator

*Sarah Yorden*  
Signature

11-19-21  
Date

Board Secretary

*Patricia Lombel*  
Signature

11-19-21  
Date

Stacy Stair

\_\_\_\_\_  
Contact Person

sstair@pottsville.k12.pa.us

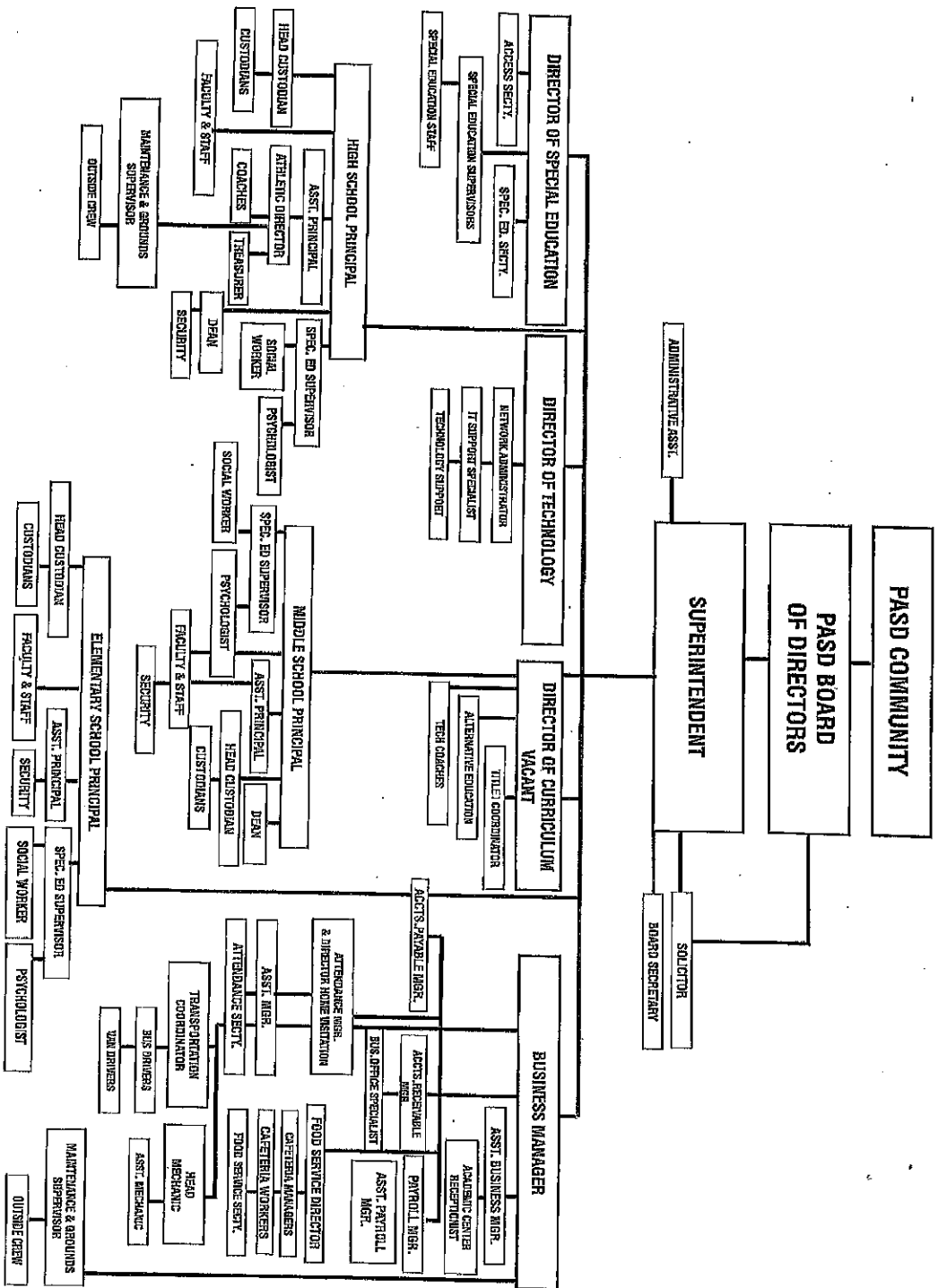
\_\_\_\_\_  
Contact Person E-mail Address

(570)621-2904      Ext :

\_\_\_\_\_  
Contact Person Telephone Number

\_\_\_\_\_  
Contact Person Fax Number

# ORGANIZATIONAL CHART FOR THE POTTSVILLE AREA SCHOOL DISTRICT



The Business Manager shall prepare the required Management Discussion and Analysis (MD&A). The MD&A shall be in the form required by GASB Statement 34 and shall be submitted to the Board for approval, prior to publication.

Prior to submission of the MD&A for Board approval, the district's independent auditors shall review the MD&A, in accordance with SAS No. 52, "Required Supplementary Information".

### **Guidelines**

In order to associate debt with acquired assets and to avoid net asset deficits, any asset that has been acquired with debt proceeds shall be capitalized, regardless of the cost of the asset. The asset life of these assets shall be considered relative to the time of the respective debt amortizations.

For all other assets not acquired by debt proceeds, the dollar value of any single item for inclusion in the fixed assets accounts shall be not less than \$4,000.

The capitalization threshold shall be set at a level that will capture at least eighty percent (80%) of all fixed assets.

The assets listed below do not normally individually meet capitalization threshold criteria:

1. Library books.
2. Classroom texts.
3. Computer equipment.
4. Classroom furniture.

These asset category costs shall be capitalized and depreciated as groups when that group's acquisition cost exceeds the capitalization threshold in any given fiscal year.

For group asset depreciation purposes, the estimated useful life of the group may be based on the weighted average or simple average of the useful life of individual items, or on an assessment of the life of the group as a whole. Periodically, the district shall review the estimated life of groups of assets and adjust the remaining depreciation life of the group.

Assets that fall below the capitalization threshold for GASB 34 reporting purposes may still be significant for insurance, warranty service, and obsolescence/replacement policy tracking purposes. The district may record and maintain these non-GASB 34 asset inventories in subsidiary ledgers.

<u>Val Number</u>	<u>Description</u>	<u>Justification</u>
12195	REG: Current Year AFR Beginning Fund Balance must equal Prior Year AFR Ending Fund Balance. Justifications to this error must fully explain the situation that prompted a fund balance restatement. "Auditor Adjustment" is not a sufficient justification.  Total Govt Funds, Beg Bal: \$1,133,666.00 PY Ending Bal, Govt Funds: \$310,647.00	Difference of \$823,019 represents a prior period adjustment to move Scholarship Funds from Fiduciary Funds to General Fund per as "GASB 84".
12196	REG - Fund 10: Current Year AFR Beginning Fund Balance must equal Prior Year AFR Ending Fund Balance. Justifications to this error must fully explain the situation that prompted a fund balance restatement. "Auditor Adjustment" is not a sufficient justification.  REG Fund 10, Beg Fund Bal: \$520,719.00 PY Ending Fund Balance: \$-302,300.00	Difference of \$823,019 represents a prior period adjustment to move Scholarship Funds from Fiduciary Funds to General Fund as per "GASB 84".
30685	Revenue Detail: Current Tax Revenue amount cannot exceed 50% variance from prior year amount. Correct the data or enter a justification.  6153, Current AFR Rev Detail: \$350,709.68 6153, Prior AFR Rev Detail: \$194,152.30	Increase in Real Estate Revenue
41130	Expenditure Detail - There is an entry in account 5150-990 which should only include bond discounts. Please verify that only bond discounts are being reported within this code.  Expenditure 5150-990, Fund 10: \$32,095.00	This confirms only bond discounts are reported in this account.

Amounts Expressed in Whole Dollars	<u>Capital Reserve (690,1850)</u> (31)	<u>Capital Reserve (1431)</u> (32)	<u>Other Capital Projects Fund</u> (39)	<u>Debt Service</u> (40)	<u>Permanent</u> (90)
<b>Assets And Deferred Outflows Of Resources</b>					
<b>Assets</b>					
0100 Cash and Cash Equivalents			613,129		
0110 Investments					
0120 Taxes Receivable					
0130 Due From Other Funds					
0141 Due From Other Governments					
0142 State Revenue Receivable					
0143 Federal Revenue Receivable					
0145 Other Intergovernmental Revenue Receivable					
0146 Due from Primary Government					
0147 Due from Component Unit					
0150 Other Receivables					
0170 Inventories					
0180 Prepaid Expenses (Expenditures)					
0190 Other Current Assets					
<b>Total Assets</b>			<b>\$613,129</b>		
0910 Deferred Outflows of Resources					
<b>Total Assets And Deferred Outflows Of Resources</b>			<b>\$613,129</b>		

Amounts Expressed in Whole Dollars	<u>General Fund</u> (10)	<u>Student Sponsored</u> <u>Activity Fund</u> (21)	<u>Public Purpose Trust</u> (27)	<u>Other Compt Approved</u> (28)	<u>Athletic / Activity</u> (29)
<b>Liabilities And Deferred Inflows Of Resources And Fund Balances</b>					
<b>Liabilities</b>					
0400 Due to Other Funds	93,375				
0411 Due to Other Governments					
0412 Due to Primary Government					
0413 Due to Component Unit					
0420 Accounts Payable	450,097				
0430 Contracts Payable	196,132				
0440 Current Portion of Long-Term Debt					
0450 Short-Term Payables					
0461 Accrued Salaries and Benefits	3,604,890				
0462 Payroll Deductions and Withholding					
0480 Unearned Revenues					
0490 Other Current Liabilities					
<b>Total Liabilities</b>	<b>\$4,344,494</b>				
0950 Deferred Inflows of Resources	3,159,813				
<b>Fund Balances</b>					
0810 Nonspendable Fund Balance					
0820 Restricted Fund Balance	866,543				
0830 Committed Fund Balance					
0840 Assigned Fund Balance					
0850 Unassigned Fund Balance	4,065,460				
<b>Total Fund Balances</b>	<b>\$4,932,003</b>				
<b>Total Liabilities, Deferred Inflows Of Resources And Fund Balances</b>	<b>\$12,436,310</b>				

Amounts Expressed in Whole Dollars	<u>Total Governmental Funds</u>
<b>Liabilities And Deferred Inflows Of Resources And Fund Balances</b>	
<b>Liabilities</b>	
0400 Due to Other Funds	93,375
0411 Due to Other Governments	
0412 Due to Primary Government	
0413 Due to Component Unit	
0420 Accounts Payable	450,097
0430 Contracts Payable	196,132
0440 Current Portion of Long-Term Debt	
0450 Short-Term Payables	
0461 Accrued Salaries and Benefits	3,604,890
0462 Payroll Deductions and Withholding	
0480 Unearned Revenues	
0490 Other Current Liabilities	
<b>Total Liabilities</b>	<b>\$4,344,494</b>
0950 Deferred Inflows of Resources	3,159,813
<b>Fund Balances</b>	
0810 Nonspendable Fund Balance	
0820 Restricted Fund Balance	1,479,672
0830 Committed Fund Balance	
0840 Assigned Fund Balance	
0850 Unassigned Fund Balance	4,065,460
<b>Total Fund Balances</b>	<b>\$5,545,132</b>
<b>Total Liabilities, Deferred Inflows Of Resources And Fund Balances</b>	<b>\$13,049,439</b>



Amounts Expressed in Whole Dollars	<u>Capital Reserve (690)</u> 1850 (31)	<u>Capital Reserve (1431)</u> (32)	<u>Other Capital Projects</u> <u>Fund</u> (39)	<u>Debt Service</u> (40)	<u>Permanent</u> (90)
<b>Revenues</b>					
6000 Revenue from Local Sources			182		
7000 Revenue from State Sources					
8000 Revenue from Federal Sources					
<b>Total Revenues</b>			<b>\$182</b>		
<b>Expenditures</b>					
1000 Instruction					
2000 Support Services					
3000 Operation of Non-Instructional Services					
4000 Facilities Acquisition, Construction and Improvement Services					
5110 Debt Service					
5130 Refund of Prior Year Revenues / Receipts					
<b>Total Expenditures</b>					
<b>Excess (Deficiency) Of Revenues Over Expenditures</b>			<b>\$182</b>		
<b>Other Financing Sources (Uses)</b>					
9110 Face Value of Bonds Issued					
9120 Proceeds from Refunding of Bonds					
9130 Bond Premiums					
9200 Proceeds from Extended-Term Financing					
9300 Interfund Transfers - IN					
9400 Sale of or Compensation for Loss of Fixed Assets					
9710 Transfers from Component Units					
9720 Transfers from Primary Governments					
9910 Other Financing Sources Not Listed in the 9000 Series					
9990 Insurance Recoveries					
5120 Debt Service – Refunded Bonds					
5150 Bond Discounts					
5200 Interfund Transfers – Out					
5300 Transfers Out to Component Units/Primary Governments					
<b>Total Other Financing Sources (Uses)</b>					

Amounts Expressed in Whole Dollars

	<u>General Fund</u> (10)	<u>Student Sponsored</u> <u>Activity Fund</u> (21)	<u>Public Purpose Trust</u> (27)	<u>Other Compt Approved</u> (28)	<u>Athletic / Activity</u> (29)
<b>Special And Extraordinary Items</b>					
9920 Special Items – Gains					
9930 Extraordinary Items – Gains					
5520 Special Items – Losses					
5530 Extraordinary Items – Losses					
<b>Net Change in Fund Balances</b>	<b>\$4,411,283</b>				
<b>Fund Balance</b>					
0001 Fund Balance - Beginning of Fiscal Year	520,719				
<b>Fund Balance - End Of Year</b>	<b>\$4,932,002</b>				

Amounts Expressed in Whole Dollars

**Total Governmental Funds**

**Special And Extraordinary Items**

9920 Special Items – Gains

9930 Extraordinary Items – Gains

5520 Special Items – Losses

5530 Extraordinary Items – Losses

**Net Change In Fund Balances**

**\$4,411,465**

**Fund Balance**

0001 Fund Balance - Beginning of Fiscal Year

1,133,666

**Fund Balance - End Of Year**

**\$5,545,131**

Amounts Expressed in Whole Dollars

	<u>Food Service</u> (51)	<u>Child Care</u> <u>Operations</u> (52)	<u>Other Enterprise</u> (58)	<u>TOTAL</u>	<u>Internal Service</u> (60)
<b>Liabilities And Deferred Inflows Of Resources And Net Position</b>					
<b>Current Liabilities</b>					
0400 Due to Other Funds	279,043			279,043	
0411 Due to Other Governments					
0413 Due to Component Unit					
0420 Accounts Payable	13,497			13,497	
0430 Contracts Payable					
0440 Current Portion of Long-Term Debt					
0450 Short-Term Payables					
0461 Accrued Salaries and Benefits	3,246			3,246	
0462 Payroll Deductions and Withholding					
0480 Unearned Revenues					
0490 Other Current Liabilities					
<b>Total Current Liabilities</b>	<b>\$295,786</b>			<b>\$295,786</b>	
<b>Noncurrent Liabilities</b>					
0510 Bonds Payable					
0520 Extended-Term Financing Agreements Payable					
0530 Lease-Purchase Obligations					
0540 Accumulated Compensated Absences	9,425			9,425	
0550 Authority Lease Obligations					
0560 Other Post-Employment Benefits (OPEB)	125,432			125,432	
0570 Net Pension Liability	2,342,357			2,342,357	
0599 Other Noncurrent Liabilities					
<b>Total Noncurrent Liabilities</b>	<b>\$2,477,214</b>			<b>\$2,477,214</b>	
<b>Total Liabilities</b>	<b>\$2,773,000</b>			<b>\$2,773,000</b>	
0950 Deferred Inflows of Resources	385,695			385,695	
<b>Net Position</b>					
0791 Net Investment in Capital Assets	8,388			8,388	
0008 Restricted Net Position (0792 – 0798)					
0799 Unrestricted Net Position	(2,553,306)			(2,553,306)	
<b>Total Net Position</b>	<b>(\$2,544,918)</b>			<b>(\$2,544,918)</b>	
<b>Total Liabilities And Deferred Inflows Of Resources And Net Position</b>	<b>\$613,777</b>			<b>\$613,777</b>	

Amounts Expressed in Whole Dollars	<u>Food Service</u> (51)	<u>Child Care Operations</u> (52)	<u>Other Enterprise</u> (58)	<u>TOTAL</u>	<u>Internal Service</u> (60)
<b>Contributions, Transfers, and Special and Extraordinary Items</b>					
5200 Interfund Transfers – Out					
5300 Transfers Out to Component Units/Primary Governments					
5520 Special Items – Losses					
5530 Extraordinary Items – Losses					
9300 Interfund Transfers - IN	150,000			150,000	
9500 Capital Contributions	33,803			33,803	
9700 Transfers IN From Component Units/Primary Governments					
9920 Special Items – Gains					
9930 Extraordinary Items – Gains					
<b>Change in Net Position</b>	<b>\$172,432</b>			<b>\$172,432</b>	
0002 Net Position - Beginning of Fiscal Year	(2,717,350)			(2,717,350)	
0003 Accounting Changes / Residual Equity Transfers					
<b>Net Position - End Of Year</b>	<b>(\$2,544,918)</b>			<b>(\$2,544,918)</b>	

0045 Loans Received (Paid)

<b>Net Cash Prov By (Used for) Investing Activifles</b>	<b>\$445</b>	<b>\$445</b>
---	--------------	--------------

**COMBINED STATEMENT OF CASH FLOWS**  
**SCHEDULE OF NONCASH INVESTING, CAPITAL, AND FINANCING ACTIVITIES**

Explanation of Transaction and Balance Sheet Effect	Amount
<b>Total</b>	

Amounts Expressed in Whole Dollars	<u>Other Custodial</u> <u>(89)</u>	<u>Fiduciary Component Units</u> <u>(98)</u>	<u>Total Fiduciary Funds</u>
<b>Assets And Deferred Outflows Of Resources</b>			
<b>Assets</b>			
0100 Cash and Cash Equivalents	379,076		401,953
0110 Investments			
0130 Due From Other Funds			
0140 Due from Other Governments, Primary Government and Component Units			
0150 Other Receivables			
0170 Inventories			
0180 Prepaid Expenses (Expenditures)			
0190 Other Current Assets			
0220 Buildings and Building Improvements (Net)			
0230 Machinery, Equipment and Furniture (Net)			
<b>Total Assets</b>	<b>\$379,076</b>		<b>\$401,953</b>
0910 Deferred Outflows of Resources			
<b>Total Assets And Deferred Outflows Of Resources</b>	<b>\$379,076</b>		<b>\$401,953</b>



LEA : 129546103 Pottsville Area SD

Printed 11/17/2021 3:25:29 PM

Amounts Expressed in Whole Dollars

	<u>Other Custodial (89)</u>	<u>Fiduciary Component Units (98)</u>	<u>Total Fiduciary Funds</u>
<b>Liabilities, Deferred Inflows Of Resources And Net Position</b>			
<b>Liabilities</b>			
0400 Due to Other Funds			
0410 Due to Other Governments, Primary Government and Component Units			
0420 Accounts Payable			
0430 Contracts Payable			
0450 Short-Term Payables			
0460 Payroll Accruals and Withholdings			
0480 Unearned Revenues			
0490 Other Current Liabilities			
<b>Total Liabilities</b>			
0950 Deferred Inflows of Resources			
<b>Net Position</b>			
0791 Net Investment in Capital Assets			
0009 Restricted Net Position (0792 – 0798)	379,076		401,953
0799 Unrestricted Net Position			
<b>Total Net Position</b>	<b>\$379,076</b>		<b>\$401,953</b>
<b>Total Liabilities, Deferred Inflows Of Resources And Net Position</b>	<b>\$379,076</b>		<b>\$401,953</b>

Amounts Expressed in Whole Dollars	<u>Total Fiduciary Funds</u>
<b>Additions</b>	
0091 Gifts and Contributions	4,523
0095 Net Investment Earnings	228
0092 Other Additions	300,071
<b>Deductions</b>	
0093 Scholarships Awarded	1,900
0094 Other Deductions	352,997
<b>Change in Net Position</b>	<b>(\$50,075)</b>
0006 Net Position – Beginning of Fiscal Year	452,028
0007 Net Position Held in Trust for Pension Benefits	
<b>Net Position - End of Fiscal Year</b>	<b>\$401,953</b>

	<b>Revenue Reported In Current Year</b>
<b><u>Revenue from State Sources</u></b>	
7111 Basic Education Funding-Formula	13,751,234.74
7112 Basic Education Funding-Social Security	735,824.07
7160 Tuition for Orphans Subsidy	40,505.19
7271 Special Education funds for School-Aged Pupils	1,953,665.58
7311 Pupil Transportation Subsidy	397,082.44
7312 Nonpublic and Charter School Pupil Transportation Subsidy	66,605.00
7330 Health Services (Medical, Dental, Nurse, Act 25)	52,414.11
7340 State Property Tax Reduction Allocation	705,691.95
7505 Ready to Learn Block Grant	488,569.00
7820 State Share of Retirement Contributions	3,234,007.48
<b>TOTAL Revenue from State Sources</b>	<b>\$21,425,599.56</b>

	<b>Revenue Reported In Current Year</b>			
<b><u>Other Financing Sources</u></b>				
9120 Proceeds from Refunding of Bonds	4,585,000.00			
9130 Bond Premiums	263,803.55			
9400 Sale of or Compensation for Loss of Fixed Assets	20,507.00			
<b>TOTAL Other Financing Sources</b>	<b>\$4,869,310.55</b>			
<b>TOTAL FROM ALL SOURCES</b>	<b>\$47,135,008.57</b>	<b>\$874,466.33</b>	<b>\$873,648.13</b>	<b>\$16,164,652.41</b>

	<u>Capital Reserve</u> <u>(1431) (32)</u>	<u>Other Capital</u> <u>Projects Fund (39)</u>	<u>Debt Service (40)</u>	<u>Permanent (90)</u>	<u>Total</u>
<b>6000 Revenue from Local Sources</b>					
6111 Current Real Estate Taxes					10,893,806.36
6113 Public Utility Realty Taxes					14,733.52
6114 Payments in Lieu of Current Taxes - State / Local					39,122.28
6120 Current Per Capita Taxes, Section 679					39,259.30
6141 Current Act 511 Per Capita Taxes					39,259.30
6143 Current Act 511 Local Services Taxes					42,495.33
6151 Current Act 511 Earned Income Taxes					1,830,666.15
6152 Current Act 511 Occupation Taxes					549,065.72
6153 Current Act 511 Real Estate Transfer Taxes					350,709.68
6155 Current Act 511 Business Privilege Taxes					894,258.38
6411 Delinquent Real Estate Taxes					1,068,310.57
6420 Delinquent Per Capita Taxes, Section 679					14,698.00
6440 Delinquent Local Enabling Taxes - Flat Rate Assessments					15,201.52
6451 Delinquent Act 511 Earned Income Taxes					15,173.49
6452 Delinquent Act 511 Occupation Taxes					325,563.11
6455 Delinquent Act 511 Business Privilege Taxes					33,147.90
6500 Earnings on Investments	182.11				38,259.06
6700 Revenues from LEA Activities					38,392.00
6831 Federal Revenue Received from Other Pennsylvania Public LEAs					73,842.86
6832 Federal IDEA Revenue Received as Pass Through					471,510.29
6910 Rentals					10,650.00
6920 Contributions and Donations from Private Sources					267,941.68
6941 Regular Day School Tuition					100.00
6942 Summer School Tuition					5,600.00
6944 Receipts from Other LEAs in Pennsylvania - Education					1,781,390.95
6961 Transportation Services Provided Other Pennsylvania LEAs					31,140.00
6962 Other Services Provided Other Pennsylvania LEAs					49,195.00
6970 Services Provided Other Funds					1,854.17
6991 Refunds of a Prior Year Expenditure					128,250.39
6992 Energy Efficiency Revenues and Incentives					10,376.81
6999 Other Revenues Not Specified Above					28,310.27
<b>6000 Total Revenue from Local Sources</b>	<b>\$182.11</b>				<b>\$19,102,284.09</b>
<b>7000 Revenue from State Sources</b>					
7111 Basic Education Funding-Formula					13,751,234.74
7112 Basic Education Funding-Social Security					735,824.07

	<u>Capital Reserve</u> <u>(1431) (32)</u>	<u>Other Capital</u> <u>Projects Fund (39)</u>	<u>Debt Service (40)</u>	<u>Permanent (90)</u>	<u>Total</u>
<b>7000 Revenue from State Sources</b>					
7160 Tuition for Orphans Subsidy					40,505.19
7271 Special Education funds for School-Aged Pupils					1,953,665.58
7311 Pupil Transportation Subsidy					397,082.44
7312 Nonpublic and Charter School Pupil Transportation Subsidy					66,605.00
7330 Health Services (Medical, Dental, Nurse, Act 25)					52,414.11
7340 State Property Tax Reduction Allocation					705,691.95
7505 Ready to Learn Block Grant					488,569.00
7820 State Share of Retirement Contributions					3,234,007.48
<b>7000 Total Revenue from State Sources</b>					<b>\$21,425,599.56</b>
<b>8000 Revenue from Federal Sources</b>					
8514 NCLB, Title I - Improving the Academic Achievement of the Disadvantaged					758,844.60
8515 NCLB, Title II - Preparing, Training and Recruiting High Quality Teachers and Principals					114,367.28
8517 NCLB, Title IV - 21st Century Schools					61,761.40
8741 Elementary and Secondary School Emergency Relief Fund (ESSER)					285,918.90
8742 Governor's Emergency Education Relief Fund (GEER)					16,344.05
8743 ESSER II - Elementary and Secondary School Emergency Relief Fund					196,419.84
8749 Other CARES Act Funding					281,989.09
8820 Medical Assistance Reimbursement for Administrative Claiming (Quarterly) Program					22,351.32
<b>8000 Total Revenue from Federal Sources</b>					<b>\$1,737,996.48</b>
<b>9000 Other Financing Sources</b>					
9120 Proceeds from Refunding of Bonds					4,585,000.00
9130 Bond Premiums					263,803.55
9400 Sale of or Compensation for Loss of Fixed Assets					20,507.00
<b>9000 Total Other Financing Sources</b>					<b>\$4,869,310.55</b>
<b>Total From All Sources</b>	<b>\$182.11</b>				<b>\$47,135,190.68</b>

	<u>Capital Reserve (1431)</u> <u>(32)</u>	<u>Other Capital Projects</u> <u>Fund (39)</u>	<u>Debt Service (40)</u>	<u>Permanent (90)</u>	<u>Total</u>
Revenue from Local Sources	182.11				19,102,284.09
Revenue from State Sources					21,425,599.56
Revenue from Federal Sources					1,737,996.48
Other Financing Sources					4,869,310.55
<b>Total From All Sources</b>	<b>\$182.11</b>				<b>\$47,135,190.68</b>

General Fund (10)

1000 Instruction

800 Other Objects

810 Dues and Fees

Total Other Objects

Total 1000 Instruction

Total

5,825.00

\$5,825.00

\$25,309,611.51



**General Fund (10)**

**1110 Regular Programs**

	<u>Elementary</u>	<u>Secondary</u>	<u>Federal</u>	<u>Total</u>
<b>100 Personnel Services – Salaries</b>				
100 Personnel Services – Salaries	3,033,909.01	3,545,114.97		6,579,023.98
<b>Total Personnel Services – Salaries</b>	<b>\$3,033,909.01</b>	<b>\$3,545,114.97</b>		<b>\$6,579,023.98</b>
<b>200 Personnel Services – Employee Benefits</b>				
210 Group Insurance – Contracted Provider	1,041,874.63	1,146,535.25		2,188,409.88
220 Social Security Contributions	228,663.16	260,162.86		486,826.02
230 PSERS Retirement Contributions	1,020,219.61	1,181,368.52		2,201,588.13
250 Unemployment Compensation	732.92	732.92		1,465.84
260 Workers' Compensation	30,454.77	37,184.85		67,639.62
270 Group Insurance – Self-Insurance	(2,492.06)	(2,216.93)		(4,708.99)
280 Other Post-Employment Benefits (OPEB)	89,172.64	89,172.64		178,345.28
<b>Total Personnel Services – Employee Benefits</b>	<b>\$2,406,625.67</b>	<b>\$2,712,940.11</b>		<b>\$5,119,565.78</b>
<b>300 Purchased Professional and Technical Services</b>				
322 Professional Educational Services – Ius		16,560.00	58,566.91	75,126.91
323 Professional Educational Services – Other Educational Agencies	11,241.25	11,241.25		22,482.50
329 Professional Educational Services – Other	101,819.88	102,543.98		204,363.86
<b>Total Purchased Professional and Technical Services</b>	<b>\$113,061.13</b>	<b>\$130,345.23</b>	<b>\$58,566.91</b>	<b>\$301,973.27</b>
<b>400 Purchased Property Services</b>				
430 Repairs and Maintenance Services	118.50	5,045.25		5,163.75
440 Rentals	(379.40)	(379.39)		(758.79)
<b>Total Purchased Property Services</b>	<b>(\$260.90)</b>	<b>\$4,665.86</b>		<b>\$4,404.96</b>
<b>500 Other Purchased Services</b>				
562 Tuition To Pennsylvania Charter Schools	1,297,384.77	912,045.57		2,209,430.34
568 Tuition To Private Residential Rehabilitative Institutions (PRRI) [In-State] and Detention Centers	5,341.44	5,341.44		10,682.88
580 Travel		2,728.56		2,728.56
<b>Total Other Purchased Services</b>	<b>\$1,302,726.21</b>	<b>\$920,115.57</b>		<b>\$2,222,841.78</b>
<b>600 Supplies</b>				
610 General Supplies	20,547.10	34,991.86		55,538.96
640 Books and Periodicals	62,433.39	22,655.38		85,088.77
650 Supplies & Fees – Technology Related	7,240.85	7,544.40		14,785.25
<b>Total Supplies</b>	<b>\$90,221.34</b>	<b>\$65,191.64</b>		<b>\$155,412.98</b>
<b>800 Other Objects</b>				
810 Dues and Fees	305.00	3,655.00		3,960.00
<b>Total Other Objects</b>	<b>\$305.00</b>	<b>\$3,655.00</b>		<b>\$3,960.00</b>
<b>Total 1110 Regular Programs</b>	<b>\$6,946,587.46</b>	<b>\$7,382,028.38</b>	<b>\$58,566.91</b>	<b>\$14,387,182.75</b>

**General Fund (10)**

**1200 Special Programs – Elementary / Secondary**

	<u>Elementary</u>	<u>Secondary</u>	<u>Federal</u>	<u>Total</u>
<b>100 Personnel Services – Salaries</b>				
100 Personnel Services – Salaries	1,568,918.29	1,234,532.76		2,803,451.05
<b>Total Personnel Services – Salaries</b>	<b>\$1,568,918.29</b>	<b>\$1,234,532.76</b>		<b>\$2,803,451.05</b>
<b>200 Personnel Services – Employee Benefits</b>				
210 Group Insurance – Contracted Provider	589,677.96	424,230.04		1,013,908.00
220 Social Security Contributions	117,864.76	92,652.62		210,517.38
230 PSERS Retirement Contributions	535,650.69	417,499.13		953,149.82
250 Unemployment Compensation	44,593.62	44,593.61		89,187.23
270 Group Insurance – Self-Insurance	4,578.57	(7,092.41)		(2,513.84)
280 Other Post-Employment Benefits (OPEB)	19,165.63	18,733.33		37,898.96
<b>Total Personnel Services – Employee Benefits</b>	<b>\$1,311,531.23</b>	<b>\$990,616.32</b>		<b>\$2,302,147.55</b>
<b>300 Purchased Professional and Technical Services</b>				
322 Professional Educational Services – Ius	361,042.90	384,254.24	455,536.00	1,200,833.14
329 Professional Educational Services – Other	3,326.80	3,326.80		6,653.60
330 Other Professional Services	52,972.70	49,864.40		102,837.10
<b>Total Purchased Professional and Technical Services</b>	<b>\$417,342.40</b>	<b>\$437,445.44</b>	<b>\$455,536.00</b>	<b>\$1,310,323.84</b>
<b>500 Other Purchased Services</b>				
561 Tuition To Other School Districts Within the State		73,379.26		73,379.26
562 Tuition To Pennsylvania Charter Schools	879,779.24	795,182.71		1,674,961.95
580 Travel	40.25	80.50		120.75
594 IU Payment By Withholding for Institutionalized Children's Programs – Special Classes	902.10	902.11		1,804.21
<b>Total Other Purchased Services</b>	<b>\$880,721.59</b>	<b>\$869,544.58</b>		<b>\$1,750,266.17</b>
<b>600 Supplies</b>				
610 General Supplies	1,782.12	4,280.38	25.56	6,088.06
640 Books and Periodicals	3,149.05	14,371.54	3,234.44	20,755.03
650 Supplies & Fees – Technology Related	4,349.00	4,349.00	6,665.00	15,363.00
<b>Total Supplies</b>	<b>\$9,280.17</b>	<b>\$23,000.92</b>	<b>\$9,925.00</b>	<b>\$42,206.09</b>
<b>700 Property</b>				
752 Capital Equipment – Original and Additional	2,432.99			2,432.99
<b>Total Property</b>	<b>\$2,432.99</b>			<b>\$2,432.99</b>
<b>800 Other Objects</b>				
810 Dues and Fees	1,469.00	396.00		1,865.00
<b>Total Other Objects</b>	<b>\$1,469.00</b>	<b>\$396.00</b>		<b>\$1,865.00</b>
<b>Total 1200 Special Programs – Elementary / Secondary</b>	<b>\$4,191,695.67</b>	<b>\$3,555,536.02</b>	<b>\$465,461.00</b>	<b>\$8,212,692.69</b>

**General Fund (10)**

**1220 Sensory Support**

	<u>Elementary</u>	<u>Secondary</u>	<u>Federal</u>	<u>Total</u>
<b>100 Personnel Services – Salaries</b>				
100 Personnel Services – Salaries	189,783.98	69,501.98		259,285.96
<b>Total Personnel Services – Salaries</b>	<b>\$189,783.98</b>	<b>\$69,501.98</b>		<b>\$259,285.96</b>
<b>200 Personnel Services – Employee Benefits</b>				
210 Group Insurance – Contracted Provider	55,202.64	21,632.64		76,835.28
220 Social Security Contributions	14,277.23	5,264.52		19,541.75
230 PSERS Retirement Contributions	64,368.38	23,661.42		88,029.80
280 Other Post-Employment Benefits (OPEB)	1,600.00	1,600.00		3,200.00
<b>Total Personnel Services – Employee Benefits</b>	<b>\$135,448.25</b>	<b>\$52,158.58</b>		<b>\$187,606.83</b>
<b>300 Purchased Professional and Technical Services</b>				
330 Other Professional Services	2,664.00	2,664.00		5,328.00
<b>Total Purchased Professional and Technical Services</b>	<b>\$2,664.00</b>	<b>\$2,664.00</b>		<b>\$5,328.00</b>
<b>600 Supplies</b>				
610 General Supplies	628.99			628.99
<b>Total Supplies</b>	<b>\$628.99</b>			<b>\$628.99</b>
<b>700 Property</b>				
752 Capital Equipment – Original and Additional	2,432.99			2,432.99
<b>Total Property</b>	<b>\$2,432.99</b>			<b>\$2,432.99</b>
<b>800 Other Objects</b>				
810 Dues and Fees	1,469.00	396.00		1,865.00
<b>Total Other Objects</b>	<b>\$1,469.00</b>	<b>\$396.00</b>		<b>\$1,865.00</b>
<b>Total 1220 Sensory Support</b>	<b>\$332,427.21</b>	<b>\$124,720.56</b>		<b>\$457,147.77</b>

General Fund (10)

1240 Academic Support

	Elementary	Secondary	Federal	Total
<b>100 Personnel Services – Salaries</b>				
100 Personnel Services – Salaries	778,474.13	685,702.67		1,464,176.80
<b>Total Personnel Services – Salaries</b>	<b>\$778,474.13</b>	<b>\$685,702.67</b>		<b>\$1,464,176.80</b>
<b>200 Personnel Services – Employee Benefits</b>				
210 Group Insurance – Contracted Provider	296,983.41	300,031.13		597,014.54
220 Social Security Contributions	58,232.34	51,194.71		109,427.05
230 PSERS Retirement Contributions	268,371.74	232,613.06		500,984.80
270 Group Insurance – Self-Insurance	377.83	(1,806.48)		(1,428.65)
280 Other Post-Employment Benefits (OPEB)	10,633.33	10,633.33		21,266.66
<b>Total Personnel Services – Employee Benefits</b>	<b>\$634,598.65</b>	<b>\$592,665.75</b>		<b>\$1,227,264.40</b>
<b>300 Purchased Professional and Technical Services</b>				
329 Professional Educational Services – Other	3,326.80	3,326.80		6,653.60
330 Other Professional Services	325.00	325.00		650.00
<b>Total Purchased Professional and Technical Services</b>	<b>\$3,651.80</b>	<b>\$3,651.80</b>		<b>\$7,303.60</b>
<b>500 Other Purchased Services</b>				
562 Tuition To Pennsylvania Charter Schools	879,779.24	795,182.71		1,674,961.95
580 Travel	40.25	40.25		80.50
<b>Total Other Purchased Services</b>	<b>\$879,819.49</b>	<b>\$795,222.96</b>		<b>\$1,675,042.45</b>
<b>600 Supplies</b>				
610 General Supplies	1,012.39	3,340.00	25.56	4,377.95
640 Books and Periodicals	2,889.80	13,565.08	399.00	16,853.88
650 Supplies & Fees – Technology Related	4,349.00	4,349.00	6,665.00	15,363.00
<b>Total Supplies</b>	<b>\$8,251.19</b>	<b>\$21,254.08</b>	<b>\$7,089.56</b>	<b>\$36,594.83</b>
<b>Total 1240 Academic Support</b>	<b>\$2,304,795.26</b>	<b>\$2,098,497.26</b>	<b>\$7,089.56</b>	<b>\$4,410,382.08</b>

**General Fund (10)**

**1243 Gifted Support**

	<u>Elementary</u>	<u>Secondary</u>	<u>Federal</u>	<u>Total</u>
<b>100 Personnel Services – Salaries</b>				
100 Personnel Services – Salaries	16,871.26	17,879.42		34,750.68
<b>Total Personnel Services – Salaries</b>	<b>\$16,871.26</b>	<b>\$17,879.42</b>		<b>\$34,750.68</b>
<b>200 Personnel Services – Employee Benefits</b>				
210 Group Insurance – Contracted Provider	8,221.63	7,308.92		15,530.55
220 Social Security Contributions	1,257.22	1,337.02		2,594.24
230 PSERS Retirement Contributions	5,714.88	6,066.61		11,781.49
<b>Total Personnel Services – Employee Benefits</b>	<b>\$15,193.73</b>	<b>\$14,712.55</b>		<b>\$29,906.28</b>
<b>Total 1243 Gifted Support</b>	<b>\$32,064.99</b>	<b>\$32,591.97</b>		<b>\$64,656.96</b>

**General Fund (10)**

**1280 Early Intervention Support**

**300 Purchased Professional and Technical Services**

322 Professional Educational Services – Ius

**Total Purchased Professional and Technical Services**

**Total 1280 Early Intervention Support**

	<u>Elementary</u>	<u>Secondary</u>	<u>Federal</u>	<u>Total</u>
	6,585.34			6,585.34
	<b>\$6,585.34</b>			<b>\$6,585.34</b>
	<b>\$6,585.34</b>			<b>\$6,585.34</b>

**General Fund (10)**

**1300 Vocational Education**

	<u>Elementary</u>	<u>Secondary</u>	<u>Federal</u>	<u>Total</u>
<b>100 Personnel Services – Salaries</b>				
100 Personnel Services – Salaries		185,194.12		185,194.12
<b>Total Personnel Services – Salaries</b>		<b>\$185,194.12</b>		<b>\$185,194.12</b>
<b>200 Personnel Services – Employee Benefits</b>				
210 Group Insurance – Contracted Provider		52,241.76		52,241.76
220 Social Security Contributions		14,035.61		14,035.61
230 PSERS Retirement Contributions		63,133.84		63,133.84
270 Group Insurance – Self-Insurance		514.70		514.70
280 Other Post-Employment Benefits (OPEB)		15,600.02		15,600.02
<b>Total Personnel Services – Employee Benefits</b>		<b>\$145,525.93</b>		<b>\$145,525.93</b>
<b>500 Other Purchased Services</b>				
564 Tuition To Career and Technology Centers		698,779.95		698,779.95
<b>Total Other Purchased Services</b>		<b>\$698,779.95</b>		<b>\$698,779.95</b>
<b>600 Supplies</b>				
640 Books and Periodicals		5,578.74		5,578.74
<b>Total Supplies</b>		<b>\$5,578.74</b>		<b>\$5,578.74</b>
<b>Total 1300 Vocational Education</b>		<b>\$1,035,078.74</b>		<b>\$1,035,078.74</b>

General Fund (10)

1420 Summer School

	<u>Elementary</u>	<u>Secondary</u>	<u>Federal</u>	<u>Total</u>
<b>100 Personnel Services – Salaries</b>				
100 Personnel Services – Salaries			6,928.00	6,928.00
<b>Total Personnel Services – Salaries</b>			<b>\$6,928.00</b>	<b>\$6,928.00</b>
<b>200 Personnel Services – Employee Benefits</b>				
220 Social Security Contributions			523.92	523.92
230 PSERS Retirement Contributions			2,390.87	2,390.87
<b>Total Personnel Services – Employee Benefits</b>			<b>\$2,914.79</b>	<b>\$2,914.79</b>
<b>Total 1420 Summer School</b>			<b>\$9,842.79</b>	<b>\$9,842.79</b>



General Fund (10)

1441 Adjudicated / Court-Placed Programs

	<u>Elementary</u>	<u>Secondary</u>	<u>Federal</u>	<u>Total</u>
<b>100 Personnel Services – Salaries</b>				
100 Personnel Services – Salaries	34,013.50	34,013.50		68,027.00
<b>Total Personnel Services – Salaries</b>	<b>\$34,013.50</b>	<b>\$34,013.50</b>		<b>\$68,027.00</b>
<b>200 Personnel Services – Employee Benefits</b>				
210 Group Insurance – Contracted Provider	13,736.77	13,736.77		27,473.54
220 Social Security Contributions	2,567.20	2,567.20		5,134.40
230 PSERS Retirement Contributions	11,608.60	11,608.60		23,217.20
<b>Total Personnel Services – Employee Benefits</b>	<b>\$27,912.57</b>	<b>\$27,912.57</b>		<b>\$55,825.14</b>
<b>500 Other Purchased Services</b>				
561 Tuition To Other School Districts Within the State	17,166.23	78,086.31		95,252.54
<b>Total Other Purchased Services</b>	<b>\$17,166.23</b>	<b>\$78,086.31</b>		<b>\$95,252.54</b>
<b>600 Supplies</b>				
610 General Supplies	192.74	192.74		385.48
<b>Total Supplies</b>	<b>\$192.74</b>	<b>\$192.74</b>		<b>\$385.48</b>
<b>Total 1441 Adjudicated / Court-Placed Programs</b>	<b>\$79,285.04</b>	<b>\$140,205.12</b>		<b>\$219,490.16</b>

**General Fund (10)**

**1490 Additional Other Instructional Programs**

	<u>Elementary</u>	<u>Secondary</u>	<u>Federal</u>	<u>Total</u>
<b>100 Personnel Services – Salaries</b>				
100 Personnel Services – Salaries	10,555.33	30,515.23		41,070.56
<b>Total Personnel Services – Salaries</b>	<b>\$10,555.33</b>	<b>\$30,515.23</b>		<b>\$41,070.56</b>
<b>200 Personnel Services – Employee Benefits</b>				
210 Group Insurance – Contracted Provider	10,915.30	27,465.20		38,380.50
220 Social Security Contributions	715.25	2,081.50		2,796.75
230 PSERS Retirement Contributions	3,383.80	9,650.44		13,034.24
<b>Total Personnel Services – Employee Benefits</b>	<b>\$15,014.35</b>	<b>\$39,197.14</b>		<b>\$54,211.49</b>
<b>Total 1490 Additional Other Instructional Programs</b>	<b>\$25,569.68</b>	<b>\$69,712.37</b>		<b>\$95,282.05</b>

**General Fund (10)****2000 Support Services****100 Personnel Services – Salaries**

100 Personnel Services – Salaries

3,867,084.84

**Total Personnel Services – Salaries****\$3,867,084.84****200 Personnel Services – Employee Benefits**

210 Group Insurance – Contracted Provider

1,445,707.17

220 Social Security Contributions

281,424.55

230 PSERS Retirement Contributions

1,285,506.03

240 Tuition Reimbursement

122,607.00

260 Workers' Compensation

38,548.30

270 Group Insurance – Self-Insurance

(2,353.11)

280 Other Post-Employment Benefits (OPEB)

51,683.34

291 Other Retirement Plans

27,700.00

292 Health Savings Accounts

67,900.00

**Total Personnel Services – Employee Benefits****\$3,318,723.28****300 Purchased Professional and Technical Services**

322 Professional Educational Services – Ius

3,590.47

329 Professional Educational Services – Other

145,511.69

330 Other Professional Services

468,531.51

340 Technical Services

57,286.18

350 Security / Safety Services

10,668.00

360 Employee Training and Development Services

4,752.00

**Total Purchased Professional and Technical Services****\$690,339.85****400 Purchased Property Services**

410 Cleaning Services

28,396.19

420 Utility Services

111,015.97

430 Repairs and Maintenance Services

333,508.12

440 Rentals

360,827.82

450 Construction Services

37,420.00

460 Extermination Services

9,731.27

**Total Purchased Property Services****\$880,899.37****500 Other Purchased Services**

513 Contracted Carriers

294.29

516 Student Transportation Services From the IU

48,234.05

520 Insurance – General

158.00

521 Fire Insurance

158.60

522 Automotive Liability Insurance

36,665.02

523 General Property and Liability Insurance

102,943.98

530 Communications

110,983.41

549 Other Advertising/Public Relations

9,271.37

550 Printing and Binding

9,223.65

580 Travel

966.12

599 Other Miscellaneous Purchased Services

1,600.00

**Total Other Purchased Services****\$320,498.49**

**General Fund (10)**

**2100 Support Services – Students**

	<u>Elementary</u>	<u>Secondary</u>	<u>Federal</u>	<u>Total</u>
<b>100 Personnel Services – Salaries</b>				
100 Personnel Services – Salaries	128,179.23	260,812.71		598,174.18
<b>Total Personnel Services – Salaries</b>	<b>\$128,179.23</b>	<b>\$260,812.71</b>		<b>\$598,174.18</b>
<b>200 Personnel Services – Employee Benefits</b>				
210 Group Insurance – Contracted Provider	24,836.97	111,296.31		196,175.79
220 Social Security Contributions	9,645.68	19,464.05		42,760.81
230 PSERS Retirement Contributions	42,379.78	88,810.18		192,592.32
270 Group Insurance – Self-Insurance	790.69	790.69		(343.10)
280 Other Post-Employment Benefits (OPEB)	6,500.00	6,500.00		21,250.00
<b>Total Personnel Services – Employee Benefits</b>	<b>\$84,153.12</b>	<b>\$226,861.23</b>		<b>\$452,435.82</b>
<b>300 Purchased Professional and Technical Services</b>				
330 Other Professional Services	20,800.00	20,800.00		41,600.00
<b>Total Purchased Professional and Technical Services</b>	<b>\$20,800.00</b>	<b>\$20,800.00</b>		<b>\$41,600.00</b>
<b>400 Purchased Property Services</b>				
430 Repairs and Maintenance Services		80.00		1,740.00
<b>Total Purchased Property Services</b>		<b>\$80.00</b>		<b>\$1,740.00</b>
<b>500 Other Purchased Services</b>				
599 Other Miscellaneous Purchased Services			1,600.00	1,600.00
<b>Total Other Purchased Services</b>			<b>\$1,600.00</b>	<b>\$1,600.00</b>
<b>600 Supplies</b>				
610 General Supplies	333.08	1,432.31		1,848.39
650 Supplies & Fees – Technology Related	998.75	1,318.27		2,317.02
<b>Total Supplies</b>	<b>\$1,331.83</b>	<b>\$2,750.58</b>		<b>\$4,165.41</b>
<b>800 Other Objects</b>				
810 Dues and Fees				331.00
<b>Total Other Objects</b>				<b>\$331.00</b>
<b>Total 2100 Support Services – Students</b>	<b>\$234,464.18</b>	<b>\$511,304.52</b>	<b>\$1,600.00</b>	<b>\$1,100,046.41</b>

General Fund (10)

2140 Psychological Services

	<u>Elementary</u>	<u>Secondary</u>	<u>Federal</u>	<u>Total</u>
<b>100 Personnel Services – Salaries</b>				
100 Personnel Services – Salaries	95,250.00	31,750.00		127,000.00
<b>Total Personnel Services – Salaries</b>	<b>\$95,250.00</b>	<b>\$31,750.00</b>		<b>\$127,000.00</b>
<b>200 Personnel Services – Employee Benefits</b>				
210 Group Insurance – Contracted Provider	11,100.20	11,033.21		22,133.41
220 Social Security Contributions	7,161.42	2,188.89		9,350.31
230 PSERS Retirement Contributions	31,145.31	10,439.22		41,584.53
280 Other Post-Employment Benefits (OPEB)	3,000.00	3,000.00		6,000.00
<b>Total Personnel Services – Employee Benefits</b>	<b>\$52,406.93</b>	<b>\$26,661.32</b>		<b>\$79,068.25</b>
<b>300 Purchased Professional and Technical Services</b>				
330 Other Professional Services	20,800.00	20,800.00		41,600.00
<b>Total Purchased Professional and Technical Services</b>	<b>\$20,800.00</b>	<b>\$20,800.00</b>		<b>\$41,600.00</b>
<b>600 Supplies</b>				
610 General Supplies	333.08	1,418.36		1,751.44
650 Supplies & Fees – Technology Related	998.75	998.75		1,997.50
<b>Total Supplies</b>	<b>\$1,331.83</b>	<b>\$2,417.11</b>		<b>\$3,748.94</b>
<b>Total 2140 Psychological Services</b>	<b>\$169,788.76</b>	<b>\$81,628.43</b>		<b>\$251,417.19</b>

**General Fund (10)**

**2170 Student Accounting Services**

	<u>Elementary</u>	<u>Secondary</u>	<u>Federal</u>	<u>Total</u>
<b>100 Personnel Services – Salaries</b>				
100 Personnel Services – Salaries				96,384.96
<b>Total Personnel Services – Salaries</b>				<b>\$96,384.96</b>
<b>200 Personnel Services – Employee Benefits</b>				
210 Group Insurance – Contracted Provider				33,917.52
220 Social Security Contributions				5,367.14
230 PSERS Retirement Contributions				24,719.05
270 Group Insurance – Self-Insurance				(1,924.48)
280 Other Post-Employment Benefits (OPEB)				8,250.00
<b>Total Personnel Services – Employee Benefits</b>				<b>\$70,329.23</b>
<b>400 Purchased Property Services</b>				
430 Repairs and Maintenance Services				1,660.00
<b>Total Purchased Property Services</b>				<b>\$1,660.00</b>
<b>600 Supplies</b>				
610 General Supplies				83.00
<b>Total Supplies</b>				<b>\$83.00</b>
<b>Total 2170 Student Accounting Services</b>				<b>\$168,457.19</b>

**General Fund (10)**

**2200 Support Services – Instructional Staff**

	<u>Elementary</u>	<u>Secondary</u>	<u>Federal</u>	<u>Total</u>
<b>100 Personnel Services – Salaries</b>				
100 Personnel Services – Salaries	123,792.15	121,327.61	49,654.26	294,774.02
<b>Total Personnel Services – Salaries</b>	<b>\$123,792.15</b>	<b>\$121,327.61</b>	<b>\$49,654.26</b>	<b>\$294,774.02</b>
<b>200 Personnel Services – Employee Benefits</b>				
210 Group Insurance – Contracted Provider	43,025.98	26,282.40	11,704.71	81,013.09
220 Social Security Contributions	9,005.11	9,072.38	3,753.41	21,830.90
230 PSERS Retirement Contributions	41,812.50	40,823.94	16,921.15	99,557.59
240 Tuition Reimbursement	56,505.00	66,102.00		122,607.00
270 Group Insurance – Self-Insurance	2,799.91	(3,226.61)		(426.70)
<b>Total Personnel Services – Employee Benefits</b>	<b>\$153,148.50</b>	<b>\$139,054.11</b>	<b>\$32,379.27</b>	<b>\$324,581.88</b>
<b>300 Purchased Professional and Technical Services</b>				
322 Professional Educational Services – Ius			3,590.47	3,590.47
360 Employee Training and Development Services			4,752.00	4,752.00
<b>Total Purchased Professional and Technical Services</b>			<b>\$8,342.47</b>	<b>\$8,342.47</b>
<b>500 Other Purchased Services</b>				
580 Travel	820.56	70.56		891.12
<b>Total Other Purchased Services</b>	<b>\$820.56</b>	<b>\$70.56</b>		<b>\$891.12</b>
<b>600 Supplies</b>				
610 General Supplies	686.05	866.06		1,552.11
640 Books and Periodicals	2,418.50	8,278.05		10,696.55
650 Supplies & Fees – Technology Related	3,890.78	3,890.79		7,781.57
<b>Total Supplies</b>	<b>\$6,995.33</b>	<b>\$13,034.90</b>		<b>\$20,030.23</b>
<b>Total 2200 Support Services – Instructional Staff</b>	<b>\$284,756.54</b>	<b>\$273,487.18</b>	<b>\$90,376.00</b>	<b>\$648,619.72</b>

**General Fund (10)**

**2260 Instruction and Curriculum Development Services**

	<u>Elementary</u>	<u>Secondary</u>	<u>Federal</u>	<u>Total</u>
<b>100 Personnel Services – Salaries</b>				
100 Personnel Services – Salaries	108,361.14	115,030.09		223,391.23
<b>Total Personnel Services – Salaries</b>	<b>\$108,361.14</b>	<b>\$115,030.09</b>		<b>\$223,391.23</b>
<b>200 Personnel Services – Employee Benefits</b>				
210 Group Insurance – Contracted Provider	30,261.00	21,178.04		51,439.04
220 Social Security Contributions	7,824.53	8,590.56		16,415.09
230 PSERS Retirement Contributions	36,487.30	38,650.71		75,138.01
270 Group Insurance – Self-Insurance	(213.35)	(213.35)		(426.70)
<b>Total Personnel Services – Employee Benefits</b>	<b>\$74,359.48</b>	<b>\$68,205.96</b>		<b>\$142,565.44</b>
<b>500 Other Purchased Services</b>				
580 Travel	70.56	70.56		141.12
<b>Total Other Purchased Services</b>	<b>\$70.56</b>	<b>\$70.56</b>		<b>\$141.12</b>
<b>600 Supplies</b>				
610 General Supplies	415.77	415.77		831.54
650 Supplies & Fees – Technology Related	1,787.50	1,787.50		3,575.00
<b>Total Supplies</b>	<b>\$2,203.27</b>	<b>\$2,203.27</b>		<b>\$4,406.54</b>
<b>Total 2260 Instruction and Curriculum Development Services</b>	<b>\$184,994.45</b>	<b>\$185,509.88</b>		<b>\$370,504.33</b>



**General Fund (10)**

**2280 Nonpublic Support Services**

**300 Purchased Professional and Technical Services**

322 Professional Educational Services – Ius

**Total Purchased Professional and Technical Services**

**Total 2280 Nonpublic Support Services**

	<u>Elementary</u>	<u>Secondary</u>	<u>Federal</u>	<u>Total</u>
			3,590.47	3,590.47
			<b>\$3,590.47</b>	<b>\$3,590.47</b>
			<b>\$3,590.47</b>	<b>\$3,590.47</b>

General Fund (10)

2310 Board Services

	<u>Elementary</u>	<u>Secondary</u>	<u>Federal</u>	<u>Total</u>
<b>100 Personnel Services – Salaries</b>				
100 Personnel Services – Salaries				2,499.90
<b>Total Personnel Services – Salaries</b>				<b>\$2,499.90</b>
<b>200 Personnel Services – Employee Benefits</b>				
220 Social Security Contributions				186.94
230 PSERS Retirement Contributions				862.68
292 Health Savings Accounts				67,900.00
<b>Total Personnel Services – Employee Benefits</b>				<b>\$68,949.62</b>
<b>300 Purchased Professional and Technical Services</b>				
330 Other Professional Services				20,858.53
<b>Total Purchased Professional and Technical Services</b>				<b>\$20,858.53</b>
<b>500 Other Purchased Services</b>				
520 Insurance – General				158.00
549 Other Advertising/Public Relations				9,271.37
<b>Total Other Purchased Services</b>				<b>\$9,429.37</b>
<b>600 Supplies</b>				
610 General Supplies				1,084.39
<b>Total Supplies</b>				<b>\$1,084.39</b>
<b>800 Other Objects</b>				
810 Dues and Fees				10,358.59
<b>Total Other Objects</b>				<b>\$10,358.59</b>
<b>Total 2310 Board Services</b>				<b>\$113,180.40</b>

LEA : 129546103 Pottsville Area SD

Printed 11/17/2021 3:26:52 PM

General Fund (10)

2350 Legal and Accounting Services

300 Purchased Professional and Technical Services

330 Other Professional Services

**Total Purchased Professional and Technical Services**

**Total 2350 Legal and Accounting Services**

Elementary

Secondary

Federal

Total

110,804.72

**\$110,804.72**

**\$110,804.72**

**General Fund (10)**

**2380 Office of the Principal Services**

	<u>Elementary</u>	<u>Secondary</u>	<u>Federal</u>	<u>Total</u>
<b>100 Personnel Services – Salaries</b>				
100 Personnel Services – Salaries	273,907.89	350,263.18		624,171.07
<b>Total Personnel Services – Salaries</b>	<b>\$273,907.89</b>	<b>\$350,263.18</b>		<b>\$624,171.07</b>
<b>200 Personnel Services – Employee Benefits</b>				
210 Group Insurance – Contracted Provider	129,421.42	121,018.07		250,439.49
220 Social Security Contributions	20,179.34	23,070.76		43,250.10
230 PSERS Retirement Contributions	93,697.17	105,325.27		199,022.44
260 Workers' Compensation	2,973.71	3,534.56		6,508.27
280 Other Post-Employment Benefits (OPEB)	6,000.00	6,000.00		12,000.00
<b>Total Personnel Services – Employee Benefits</b>	<b>\$252,271.64</b>	<b>\$258,948.66</b>		<b>\$511,220.30</b>
<b>400 Purchased Property Services</b>				
430 Repairs and Maintenance Services		327.50		327.50
440 Rentals	18,771.16			18,771.16
<b>Total Purchased Property Services</b>	<b>\$18,771.16</b>	<b>\$327.50</b>		<b>\$19,098.66</b>
<b>500 Other Purchased Services</b>				
550 Printing and Binding	188.40	3,948.68		4,137.08
<b>Total Other Purchased Services</b>	<b>\$188.40</b>	<b>\$3,948.68</b>		<b>\$4,137.08</b>
<b>600 Supplies</b>				
610 General Supplies	1,494.47	1,588.68		3,126.37
630 Food		677.50		677.50
<b>Total Supplies</b>	<b>\$1,494.47</b>	<b>\$2,266.18</b>		<b>\$3,803.87</b>
<b>800 Other Objects</b>				
810 Dues and Fees	1,785.00	1,575.00		3,360.00
<b>Total Other Objects</b>	<b>\$1,785.00</b>	<b>\$1,575.00</b>		<b>\$3,360.00</b>
<b>Total 2380 Office of the Principal Services</b>	<b>\$548,418.56</b>	<b>\$617,329.20</b>	<b>\$43.22</b>	<b>\$1,165,790.98</b>

**General Fund (10)**

**2400 Support Services – Pupil Health**

	<u>Elementary</u>	<u>Secondary</u>	<u>Federal</u>	<u>Total</u>
<b>100 Personnel Services – Salaries</b>				
100 Personnel Services – Salaries				242,310.63
<b>Total Personnel Services – Salaries</b>				<b>\$242,310.63</b>
<b>200 Personnel Services – Employee Benefits</b>				
210 Group Insurance – Contracted Provider				99,127.39
220 Social Security Contributions				17,974.14
230 PSERS Retirement Contributions				93,612.46
<b>Total Personnel Services – Employee Benefits</b>				<b>\$210,713.99</b>
<b>300 Purchased Professional and Technical Services</b>				
330 Other Professional Services				1,274.00
<b>Total Purchased Professional and Technical Services</b>				<b>\$1,274.00</b>
<b>400 Purchased Property Services</b>				
430 Repairs and Maintenance Services				228.35
440 Rentals				3,799.85
<b>Total Purchased Property Services</b>				<b>\$4,028.20</b>
<b>600 Supplies</b>				
610 General Supplies				1,641.31
<b>Total Supplies</b>				<b>\$1,641.31</b>
<b>Total 2400 Support Services – Pupil Health</b>				<b>\$459,968.13</b>

General Fund (10)

2430 Dental Services

300 Purchased Professional and Technical Services

Elementary

Secondary

Federal

Total

330 Other Professional Services

219.00

**Total Purchased Professional and Technical Services**

**\$219.00**

600 Supplies

610 General Supplies

480.30

**Total Supplies**

**\$480.30**

**Total 2430 Dental Services**

**\$699.30**

**General Fund (10)**

**2450 Nonpublic Health Services**

**100 Personnel Services – Salaries**

100 Personnel Services – Salaries

**Total Personnel Services – Salaries**

**200 Personnel Services – Employee Benefits**

210 Group Insurance – Contracted Provider

220 Social Security Contributions

230 PSERS Retirement Contributions

**Total Personnel Services – Employee Benefits**

**400 Purchased Property Services**

430 Repairs and Maintenance Services

**Total Purchased Property Services**

**Total 2450 Nonpublic Health Services**

Elementary

Secondary

Federal

Total

28,684.99

**\$28,684.99**

19,590.20

2,144.79

19,385.50

**\$41,120.49**

40.00

**\$40.00**

**\$69,845.48**

General Fund (10)

2500 Support Services – Business

	<u>Elementary</u>	<u>Secondary</u>	<u>Federal</u>	<u>Total</u>
<b>100 Personnel Services – Salaries</b>				
100 Personnel Services – Salaries				246,249.89
<b>Total Personnel Services – Salaries</b>				<b>\$246,249.89</b>
<b>200 Personnel Services – Employee Benefits</b>				
210 Group Insurance – Contracted Provider				101,564.48
220 Social Security Contributions				18,072.37
230 PSERS Retirement Contributions				83,686.99
260 Workers’ Compensation				4,607.45
270 Group Insurance – Self-Insurance				(528.40)
280 Other Post-Employment Benefits (OPEB)				12,300.00
291 Other Retirement Plans				1,200.00
<b>Total Personnel Services – Employee Benefits</b>				<b>\$220,902.89</b>
<b>300 Purchased Professional and Technical Services</b>				
329 Professional Educational Services – Other				145,511.69
330 Other Professional Services				35,612.34
340 Technical Services				6,007.00
<b>Total Purchased Professional and Technical Services</b>				<b>\$187,131.03</b>
<b>400 Purchased Property Services</b>				
430 Repairs and Maintenance Services				80.00
440 Rentals				31,088.73
<b>Total Purchased Property Services</b>				<b>\$31,168.73</b>
<b>500 Other Purchased Services</b>				
530 Communications				9,000.00
550 Printing and Binding				687.85
580 Travel				75.00
<b>Total Other Purchased Services</b>				<b>\$9,762.85</b>
<b>600 Supplies</b>				
610 General Supplies				10,963.76
<b>Total Supplies</b>				<b>\$10,963.76</b>
<b>800 Other Objects</b>				
810 Dues and Fees				163.19
<b>Total Other Objects</b>				<b>\$163.19</b>
<b>Total 2500 Support Services – Business</b>				<b>\$706,342.34</b>



**General Fund (10)**

**2511 Supervision of Fiscal Services - Head of Component**

	<u>Elementary</u>	<u>Secondary</u>	<u>Federal</u>	<u>Total</u>
<b>100 Personnel Services – Salaries</b>				
100 Personnel Services – Salaries				75,748.70
<b>Total Personnel Services – Salaries</b>				<b>\$75,748.70</b>
<b>200 Personnel Services – Employee Benefits</b>				
210 Group Insurance – Contracted Provider				36,079.96
220 Social Security Contributions				5,758.13
230 PSERS Retirement Contributions				26,141.10
270 Group Insurance – Self-Insurance				(11,081.08)
280 Other Post-Employment Benefits (OPEB)				3,200.00
291 Other Retirement Plans				1,200.00
<b>Total Personnel Services – Employee Benefits</b>				<b>\$61,298.11</b>
<b>300 Purchased Professional and Technical Services</b>				
329 Professional Educational Services – Other				145,511.69
330 Other Professional Services				2,184.34
<b>Total Purchased Professional and Technical Services</b>				<b>\$147,696.03</b>
<b>400 Purchased Property Services</b>				
430 Repairs and Maintenance Services				80.00
440 Rentals				(446.25)
<b>Total Purchased Property Services</b>				<b>(\$366.25)</b>
<b>500 Other Purchased Services</b>				
580 Travel				75.00
<b>Total Other Purchased Services</b>				<b>\$75.00</b>
<b>600 Supplies</b>				
610 General Supplies				1,509.87
<b>Total Supplies</b>				<b>\$1,509.87</b>
<b>800 Other Objects</b>				
810 Dues and Fees				163.19
<b>Total Other Objects</b>				<b>\$163.19</b>
<b>Total 2511 Supervision of Fiscal Services - Head of Component</b>				<b>\$286,124.65</b>

**General Fund (10)**

**2514 Payroll Services**

	<u>Elementary</u>	<u>Secondary</u>	<u>Federal</u>	<u>Total</u>
<b>100 Personnel Services – Salaries</b>				
100 Personnel Services – Salaries				81,599.96
<b>Total Personnel Services – Salaries</b>				<b>\$81,599.96</b>
<b>200 Personnel Services – Employee Benefits</b>				
210 Group Insurance – Contracted Provider				26,482.49
220 Social Security Contributions				5,885.22
230 PSERS Retirement Contributions				27,642.40
<b>Total Personnel Services – Employee Benefits</b>				<b>\$60,010.11</b>
<b>300 Purchased Professional and Technical Services</b>				
330 Other Professional Services				3,028.00
340 Technical Services				4,507.00
<b>Total Purchased Professional and Technical Services</b>				<b>\$7,535.00</b>
<b>400 Purchased Property Services</b>				
440 Rentals				16,526.70
<b>Total Purchased Property Services</b>				<b>\$16,526.70</b>
<b>600 Supplies</b>				
610 General Supplies				6,819.36
<b>Total Supplies</b>				<b>\$6,819.36</b>
<b>Total 2514 Payroll Services</b>				<b>\$172,491.13</b>

General Fund (10)

2516 Internal Auditing Services

300 Purchased Professional and Technical Services

Elementary

Secondary

Federal

Total

330 Other Professional Services

30,400.00

**Total Purchased Professional and Technical Services**

**\$30,400.00**

**Total 2516 Internal Auditing Services**

**\$30,400.00**

**General Fund (10)**

**2600 Operation and Maintenance of Plant Services**

**100 Personnel Services – Salaries**

100 Personnel Services – Salaries

**Total Personnel Services – Salaries**

**200 Personnel Services – Employee Benefits**

210 Group Insurance – Contracted Provider

220 Social Security Contributions

230 PSERS Retirement Contributions

260 Workers' Compensation

270 Group Insurance – Self-Insurance

280 Other Post-Employment Benefits (OPEB)

291 Other Retirement Plans

**Total Personnel Services – Employee Benefits**

**300 Purchased Professional and Technical Services**

330 Other Professional Services

350 Security / Safety Services

**Total Purchased Professional and Technical Services**

**400 Purchased Property Services**

410 Cleaning Services

420 Utility Services

430 Repairs and Maintenance Services

440 Rentals

450 Construction Services

460 Extermination Services

**Total Purchased Property Services**

**500 Other Purchased Services**

521 Fire Insurance

522 Automotive Liability Insurance

523 General Property and Liability Insurance

530 Communications

**Total Other Purchased Services**

**600 Supplies**

610 General Supplies

620 Energy

650 Supplies & Fees – Technology Related

**Total Supplies**

**700 Property**

762 Capitalized Equipment - Replacement

**Total Property**

**800 Other Objects**

810 Dues and Fees

**Total Other Objects**

**Total 2600 Operation and Maintenance of Plant Services**

	<u>Elementary</u>	<u>Secondary</u>	<u>Federal</u>	<u>Total</u>
			4,832.50	748,676.25
<b>Total Personnel Services – Salaries</b>			<b>\$4,832.50</b>	<b>\$748,676.25</b>
				481,766.75
			368.42	55,879.03
			1,477.88	253,592.05
				20,294.95
				(1,273.83)
				4,000.00
				1,500.00
<b>Total Personnel Services – Employee Benefits</b>			<b>\$1,846.30</b>	<b>\$815,758.95</b>
				40,436.00
				10,668.00
<b>Total Purchased Professional and Technical Services</b>				<b>\$51,104.00</b>
				28,396.19
				111,015.97
				283,417.26
				2,827.56
				37,420.00
				9,731.27
<b>Total Purchased Property Services</b>				<b>\$472,808.25</b>
				158.60
				36,665.02
				102,943.98
				57,729.91
<b>Total Other Purchased Services</b>				<b>\$197,497.51</b>
	85,557.16	83,180.83	147,907.42	316,645.41
				647,106.59
			10,053.00	10,053.00
<b>Total Supplies</b>	<b>\$85,557.16</b>	<b>\$83,180.83</b>	<b>\$157,960.42</b>	<b>\$973,805.00</b>
				11,532.00
<b>Total Property</b>				<b>\$11,532.00</b>
				2,348.58
<b>Total Other Objects</b>				<b>\$2,348.58</b>
<b>Total 2600 Operation and Maintenance of Plant Services</b>	<b>\$85,557.16</b>	<b>\$83,180.83</b>	<b>\$164,639.22</b>	<b>\$3,273,530.54</b>

**General Fund (10)**

**2619 Supervision of Operation and Maintenance of Plant Services – All Other Supervision**

	<u>Elementary</u>	<u>Secondary</u>	<u>Federal</u>	<u>Total</u>
<b>100 Personnel Services – Salaries</b>				
100 Personnel Services – Salaries				106,026.30
<b>Total Personnel Services – Salaries</b>				<b>\$106,026.30</b>
<b>200 Personnel Services – Employee Benefits</b>				
210 Group Insurance – Contracted Provider				42,856.64
220 Social Security Contributions				7,606.03
230 PSERS Retirement Contributions				35,554.41
<b>Total Personnel Services – Employee Benefits</b>				<b>\$86,017.08</b>
<b>Total 2619 Supervision of Operation and Maintenance of Plant Services – All Other Supervision</b>				<b>\$192,043.38</b>

**General Fund (10)**

**2630 Care and Upkeep of Grounds Services**

	<u>Elementary</u>	<u>Secondary</u>	<u>Federal</u>	<u>Total</u>
<b>100 Personnel Services – Salaries</b>				
100 Personnel Services – Salaries				99,287.14
<b>Total Personnel Services – Salaries</b>				<b>\$99,287.14</b>
<b>200 Personnel Services – Employee Benefits</b>				
210 Group Insurance – Contracted Provider				46,640.77
220 Social Security Contributions				7,303.61
230 PSERS Retirement Contributions				33,602.84
270 Group Insurance – Self-Insurance				(1,337.59)
280 Other Post-Employment Benefits (OPEB)				4,000.00
<b>Total Personnel Services – Employee Benefits</b>				<b>\$90,209.63</b>
<b>400 Purchased Property Services</b>				
430 Repairs and Maintenance Services				1,817.40
440 Rentals				132.33
<b>Total Purchased Property Services</b>				<b>\$1,749.73</b>
<b>600 Supplies</b>				
610 General Supplies	14,356.28	14,421.91		28,778.19
<b>Total Supplies</b>	<b>\$14,356.28</b>	<b>\$14,421.91</b>		<b>\$28,778.19</b>
<b>Total 2630 Care and Upkeep of Grounds Services</b>	<b>\$14,356.28</b>	<b>\$14,421.91</b>		<b>\$220,024.69</b>

**General Fund (10)**

**2650 Vehicle Operation and Maintenance Services (Other Than Student Transportation Vehicles)**

	<u>Elementary</u>	<u>Secondary</u>	<u>Federal</u>	<u>Total</u>
<b>100 Personnel Services – Salaries</b>				
100 Personnel Services – Salaries				5,854.22
<b>Total Personnel Services – Salaries</b>				<b>\$5,854.22</b>
<b>200 Personnel Services – Employee Benefits</b>				
210 Group Insurance – Contracted Provider				3,310.09
220 Social Security Contributions				420.53
230 PSERS Retirement Contributions				2,020.36
<b>Total Personnel Services – Employee Benefits</b>				<b>\$5,750.98</b>
<b>400 Purchased Property Services</b>				
430 Repairs and Maintenance Services				4,650.90
<b>Total Purchased Property Services</b>				<b>\$4,650.90</b>
<b>600 Supplies</b>				
610 General Supplies	1,075.56	1,075.57		2,151.13
620 Energy				2,982.97
<b>Total Supplies</b>	<b>\$1,075.56</b>	<b>\$1,075.57</b>		<b>\$5,134.10</b>
<b>Total 2650 Vehicle Operation and Maintenance Services (Other Than Student Transportation Vehicles)</b>	<b>\$1,075.56</b>	<b>\$1,075.57</b>		<b>\$21,390.20</b>

General Fund (10)

2700 Student Transportation Services

100 Personnel Services – Salaries

100 Personnel Services – Salaries

414,215.97

Total Personnel Services – Salaries

\$414,215.97

200 Personnel Services – Employee Benefits

210 Group Insurance – Contracted Provider

67,164.67

220 Social Security Contributions

31,416.12

230 PSERS Retirement Contributions

136,181.56

260 Workers’ Compensation

4,291.05

270 Group Insurance – Self-Insurance

218.92

280 Other Post-Employment Benefits (OPEB)

1,600.00

Total Personnel Services – Employee Benefits

\$240,872.32

300 Purchased Professional and Technical Services

330 Other Professional Services

2,530.00

Total Purchased Professional and Technical Services

\$2,530.00

400 Purchased Property Services

430 Repairs and Maintenance Services

6,072.73

440 Rentals

283,000.00

Total Purchased Property Services

\$289,072.73

500 Other Purchased Services

513 Contracted Carriers

294.29

516 Student Transportation Services From the IU

48,234.05

550 Printing and Binding

2,590.94

Total Other Purchased Services

\$51,119.28

600 Supplies

610 General Supplies

14,565.27

620 Energy

42,840.55

650 Supplies & Fees – Technology Related

24,845.34

Total Supplies

\$82,251.16

Total 2700 Student Transportation Services

\$1,080,061.46



General Fund (10)

2711 Supervision of Student Transportation Services – Head of Component

	<u>Elementary</u>	<u>Secondary</u>	<u>Federal</u>	<u>Total</u>
<b>100 Personnel Services – Salaries</b>				
100 Personnel Services – Salaries				38,594.85
<b>Total Personnel Services – Salaries</b>				<b>\$38,594.85</b>
<b>200 Personnel Services – Employee Benefits</b>				
210 Group Insurance – Contracted Provider				62.36
220 Social Security Contributions				2,952.58
230 PSERS Retirement Contributions				11,714.48
280 Other Post-Employment Benefits (OPEB)				1,600.00
<b>Total Personnel Services – Employee Benefits</b>				<b>\$16,329.42</b>
<b>Total 2711 Supervision of Student Transportation Services – Head of Component</b>				<b>\$54,924.27</b>

**General Fund (10)**

**2740 Vehicle Servicing and Maintenance Services**

	<u>Elementary</u>	<u>Secondary</u>	<u>Federal</u>	<u>Total</u>
<b>100 Personnel Services – Salaries</b>				
100 Personnel Services – Salaries				31,941.94
<b>Total Personnel Services – Salaries</b>				<b>\$31,941.94</b>
<b>200 Personnel Services – Employee Benefits</b>				
210 Group Insurance – Contracted Provider				18,096.95
220 Social Security Contributions				2,185.46
230 PSERS Retirement Contributions				10,505.59
<b>Total Personnel Services – Employee Benefits</b>				<b>\$30,788.00</b>
<b>400 Purchased Property Services</b>				
430 Repairs and Maintenance Services				3,268.52
<b>Total Purchased Property Services</b>				<b>\$3,268.52</b>
<b>Total 2740 Vehicle Servicing and Maintenance Services</b>				<b>\$65,998.46</b>

**General Fund (10)**

**2800 Support Services – Central**

	<u>Elementary</u>	<u>Secondary</u>	<u>Federal</u>	<u>Total</u>
<b>100 Personnel Services – Salaries</b>				
100 Personnel Services – Salaries			22,677.69	243,815.87
<b>Total Personnel Services – Salaries</b>			<b>\$22,677.69</b>	<b>\$243,815.87</b>
<b>200 Personnel Services – Employee Benefits</b>				
210 Group Insurance – Contracted Provider			3,901.44	55,287.83
220 Social Security Contributions			1,718.13	18,001.41
230 PSERS Retirement Contributions			7,758.73	82,882.97
<b>Total Personnel Services – Employee Benefits</b>			<b>\$13,378.30</b>	<b>\$156,172.21</b>
<b>300 Purchased Professional and Technical Services</b>				
340 Technical Services			19,976.18	51,279.18
<b>Total Purchased Professional and Technical Services</b>			<b>\$19,976.18</b>	<b>\$51,279.18</b>
<b>400 Purchased Property Services</b>				
430 Repairs and Maintenance Services				41,642.28
440 Rentals				21,340.52
<b>Total Purchased Property Services</b>				<b>\$62,982.80</b>
<b>500 Other Purchased Services</b>				
530 Communications				52,706.44
<b>Total Other Purchased Services</b>				<b>\$52,706.44</b>
<b>600 Supplies</b>				
610 General Supplies				9,959.09
650 Supplies & Fees – Technology Related				127,869.76
<b>Total Supplies</b>				<b>\$137,828.85</b>
<b>700 Property</b>				
756 Capitalized Technology Equipment – Original			41,799.75	41,799.75
766 Capitalized Technology Equipment – Replacement				6,190.60
768 Capitalized Technology Software - Replacement			13,850.00	13,850.00
<b>Total Property</b>			<b>\$55,649.75</b>	<b>\$61,840.35</b>
<b>800 Other Objects</b>				
810 Dues and Fees				105.00
<b>Total Other Objects</b>				<b>\$105.00</b>
<b>Total 2800 Support Services – Central</b>			<b>\$111,681.92</b>	<b>\$766,730.70</b>

General Fund (10)

2830 Staff Services

800 Other Objects

810 Dues and Fees

Total Other Objects

Total 2830 Staff Services

Elementary

Secondary

Federal

Total

105.00

\$105.00

\$105.00

LEA : 129546103 Pottsville Area SD

Printed 11/17/2021 3:26:52 PM

Page - 53 of 53

## General Fund (10)

## 2850 State and Federal Agency Liaison Services

	<u>Elementary</u>	<u>Secondary</u>	<u>Federal</u>	<u>Total</u>
<b>100 Personnel Services – Salaries</b>				
100 Personnel Services – Salaries			22,677.69	22,677.69
<b>Total Personnel Services – Salaries</b>			<b>\$22,677.69</b>	<b>\$22,677.69</b>
<b>200 Personnel Services – Employee Benefits</b>				
210 Group Insurance – Contracted Provider			3,901.44	3,901.44
220 Social Security Contributions			1,718.13	1,718.13
230 PSERS Retirement Contributions			7,758.73	7,758.73
<b>Total Personnel Services – Employee Benefits</b>			<b>\$13,378.30</b>	<b>\$13,378.30</b>
<b>300 Purchased Professional and Technical Services</b>				
340 Technical Services			19,976.18	19,976.18
<b>Total Purchased Professional and Technical Services</b>			<b>\$19,976.18</b>	<b>\$19,976.18</b>
<b>Total 2850 State and Federal Agency Liaison Services</b>			<b>\$56,032.17</b>	<b>\$56,032.17</b>

**General Fund (10)****3200 Student Activities**

	<u>Elementary</u>	<u>Secondary</u>	<u>Federal</u>	<u>Total</u>
<b>100 Personnel Services – Salaries</b>				
100 Personnel Services – Salaries				386,545.30
<b>Total Personnel Services – Salaries</b>				<b>\$386,545.30</b>
<b>200 Personnel Services – Employee Benefits</b>				
210 Group Insurance – Contracted Provider				8,945.75
220 Social Security Contributions				29,256.59
230 PSERS Retirement Contributions				127,449.90
260 Workers' Compensation				5,217.08
<b>Total Personnel Services – Employee Benefits</b>				<b>\$170,869.32</b>
<b>300 Purchased Professional and Technical Services</b>				
330 Other Professional Services				10,000.00
390 Other Purchased Professional and Technical Services				21,060.00
<b>Total Purchased Professional and Technical Services</b>				<b>\$31,060.00</b>
<b>400 Purchased Property Services</b>				
410 Cleaning Services				1,028.00
430 Repairs and Maintenance Services				9,806.82
440 Rentals				7,387.56
<b>Total Purchased Property Services</b>				<b>\$18,222.38</b>
<b>500 Other Purchased Services</b>				
550 Printing and Binding				1,320.00
580 Travel				1,226.54
<b>Total Other Purchased Services</b>				<b>\$2,546.54</b>
<b>600 Supplies</b>				
610 General Supplies				28,920.30
630 Food				1,370.00
650 Supplies & Fees – Technology Related				5,800.00
<b>Total Supplies</b>				<b>\$36,090.30</b>
<b>700 Property</b>				
752 Capital Equipment – Original and Additional				8,607.60
762 Capitalized Equipment - Replacement				12,120.00
<b>Total Property</b>				<b>\$20,727.60</b>
<b>800 Other Objects</b>				
810 Dues and Fees				1,160.00
890 Miscellaneous Expenditures				175.00
<b>Total Other Objects</b>				<b>\$1,335.00</b>
<b>Total 3200 Student Activities</b>				<b>\$667,396.44</b>

General Fund (10)

3400 Scholarships and Awards

500 Other Purchased Services

549 Other Advertising/Public Relations

Total Other Purchased Services

Total 3400 Scholarships and Awards

Elementary

Secondary

Federal

Total

92,995.08

\$92,995.08

\$92,995.08

General Fund (10)

4600 Existing Building Improvement Services

300 Purchased Professional and Technical Services

330 Other Professional Services

**Total Purchased Professional and Technical Services**

**Total 4600 Existing Building Improvement Services**

Elementary

Secondary

Federal

Total

13,172.50

**\$13,172.50**

**\$13,172.50**



General Fund (10)

5100 Debt Service / Other Expenditures and Financing Uses

	<u>Elementary</u>	<u>Secondary</u>	<u>Federal</u>	<u>Total</u>
<b>800 Other Objects</b>				
830 Interest				151,493.02
<b>Total Other Objects</b>				<b>\$151,493.02</b>
<b>900 Other Uses of Funds</b>				
910 Redemption of Principal			65,696.00	5,803,698.90
990 Miscellaneous Other Uses of Funds				32,095.00
<b>Total Other Uses of Funds</b>			<b>\$65,696.00</b>	<b>\$5,835,793.90</b>
<b>Total 5100 Debt Service / Other Expenditures and Financing Uses</b>			<b>\$65,696.00</b>	<b>\$5,987,286.92</b>

General Fund (10)

5120 Debt Service – Refunded Bonds

900 Other Uses of Funds

910 Redemption of Principal

Total Other Uses of Funds

Total 5120 Debt Service – Refunded Bonds

Elementary

Secondary

Federal

Total

4,740,383.80

\$4,740,383.80

\$4,740,383.80

LEA : 129546103 Pottsville Area SD

Printed 11/17/2021 3:27:31 PM

**General Fund (10)**

**5200 Interfund Transfers – Out**

**900 Other Uses of Funds**

939 Other Fund Transfers

**Total Other Uses of Funds**

**Total 5200 Interfund Transfers – Out**

Elementary

Secondary

Federal

Total

150,000.00 150,000.00

**\$150,000.00 \$150,000.00**

**\$150,000.00 \$150,000.00**

	<u>General Fund(10)</u>	<u>Student Sponsored Activity Fund(21)</u>	<u>Public Purpose Trust(27)</u>	<u>Other Compt Approved (28)</u>	<u>Athletic / Activity(29)</u>
<b>1000 Instruction</b>					
1100 Regular Programs - Elementary / Secondary	15,635,281.17				
1200 Special Programs - Elementary / Secondary	8,212,692.69				
1300 Vocational Education	1,035,078.74				
1400 Other Instructional Programs - Elementary / Secondary	381,620.26				
1500 Nonpublic School Programs	44,938.65				
<b>Total Instruction</b>	<b>\$25,309,611.51</b>				
<b>2000 Support Services</b>					
2100 Support Services - Students	1,100,046.41				
2200 Support Services - Instructional Staff	648,619.72				
2300 Support Services - Administration	2,442,169.29				
2400 Support Services - Pupil Health	459,968.13				
2500 Support Services - Business	706,342.34				
2600 Operation and Maintenance of Plant Services	3,273,530.54				
2700 Student Transportation Services	1,080,061.46				
2800 Support Services - Central	766,730.70				
<b>Total Support Services</b>	<b>\$10,477,468.59</b>				
<b>3000 Operation of Non-Instructional Services</b>					
3200 Student Activities	667,396.44				
3300 Community Services	25,793.58				
3400 Scholarships and Awards	92,995.08				
<b>Total Operation of Non-Instructional Services</b>	<b>\$786,185.10</b>				
<b>4000 Facilities Acquisition, Construction and Improvement Services</b>					
4600 Existing Building Improvement Services	13,172.50				
<b>Total Facilities Acquisition, Construction and Improvement Services</b>	<b>\$13,172.50</b>				
<b>5000 Other Expenditures and Financing Uses</b>					
5100 Debt Service / Other Expenditures and Financing Uses	5,987,286.92				
5200 Interfund Transfers - Out	150,000.00				
<b>Total Other Expenditures and Financing Uses</b>	<b>\$6,137,286.92</b>				
<b>TOTAL ACTUAL EXPENDITURES &amp; OTHER FINANCING USES</b>	<b>\$42,723,724.62</b>				

	<u>Total</u>
<b>1000 Instruction</b>	
1100 Regular Programs - Elementary / Secondary	15,635,281.17
1200 Special Programs - Elementary / Secondary	8,212,692.89
1300 Vocational Education	1,035,078.74
1400 Other Instructional Programs - Elementary / Secondary	381,620.26
1500 Nonpublic School Programs	44,938.65
<b>Total Instruction</b>	<b>\$25,309,611.51</b>
<b>2000 Support Services</b>	
2100 Support Services - Students	1,100,046.41
2200 Support Services - Instructional Staff	648,619.72
2300 Support Services - Administration	2,442,169.29
2400 Support Services - Pupil Health	459,968.13
2500 Support Services - Business	706,342.34
2600 Operation and Maintenance of Plant Services	3,273,530.54
2700 Student Transportation Services	1,080,061.46
2800 Support Services - Central	766,730.70
<b>Total Support Services</b>	<b>\$10,477,468.59</b>
<b>3000 Operation of Non-Instructional Services</b>	
3200 Student Activities	667,396.44
3300 Community Services	25,793.58
3400 Scholarships and Awards	92,995.08
<b>Total Operation of Non-Instructional Services</b>	<b>\$786,185.10</b>
<b>4000 Facilities Acquisition, Construction and Improvement Services</b>	
4600 Existing Building Improvement Services	13,172.50
<b>Total Facilities Acquisition, Construction and Improvement Services</b>	<b>\$13,172.50</b>
<b>5000 Other Expenditures and Financing Uses</b>	
5100 Debt Service / Other Expenditures and Financing Uses	5,987,286.92
5200 Interfund Transfers - Out	150,000.00
<b>Total Other Expenditures and Financing Uses</b>	<b>\$6,137,286.92</b>
<b>TOTAL ACTUAL EXPENDITURES &amp; OTHER FINANCING USES</b>	<b>\$42,723,724.62</b>

1.	<u>Current Special Education Expenditures/Expenses within Functions 1000, 2000, 3100, and 3200</u>	9,216,719.46
2.	<u>Current Special Education Expenditures for Instruction Functions 1000 and 3200</u>	8,294,548.42
3.	<u>Current Special Education Expenditures for Pupil Support Services Function 2100</u>	435,637.71
4.	<u>Current Special Education Expenditures for Instructional Staff Support Services Function 2200</u>	370,504.33
5.	<u>Current Special Education Expenditures for Student Transportation Support Services Function 2700</u>	109,864.69

**Note: Do not report total Special Education expenditures for the functions listed above. Refer to the AFR User Manual for specific instructions on Funds/Functions/Objects to be included and excluded on each line.**

Function	Special Education (Prior Year)	Nonspecial Education (Prior Year)	Total (Prior Year)	Special Education (Current Year)	Nonspecial Education (Current Year)	Total (Current Year)
2120 Guidance Services	110,392.91	355,178.72	465,571.63	106,103.30	378,691.08	484,794.38
2140 Psychological Services	69,236.86	207,710.60	276,947.46	55,311.78	196,105.41	251,417.19
2150 Speech Pathology and Audiology Services						
2160 Social Work Services	68,188.24	204,564.72	272,752.96	44,528.51	139,692.01	184,220.52
2260 Instruction and Curriculum Development Services	110,179.16	330,537.47	440,716.63	81,510.95	288,993.38	370,504.33
2350 Legal and Accounting Services	20,994.08	102,982.22	123,976.30	23,377.04	86,427.68	109,804.72
2420 Medical Services	1,473.27	4,419.80	5,893.07	1,164.20	4,127.63	5,291.83
2440 Nursing Services	98,376.62	295,129.86	393,506.48	84,348.11	299,052.41	383,400.52
2700 Student Transportation Services	278,195.63	834,586.88	1,112,782.51	210,293.31	745,585.35	955,878.66
<b>Total</b>	<b>\$757,036.77</b>	<b>\$2,335,110.27</b>	<b>\$3,092,147.04</b>	<b>\$606,637.20</b>	<b>\$2,138,674.95</b>	<b>\$2,745,312.15</b>

**Total Principal and Interest Payments Made by Your School - All Funds**

Function	Fund		Principal (910)	Principal (920)	Interest (830)	Total (Principal +Interest)	Misc Other Uses (990)
5110	10	General Fund	1,063,315.10		151,493.02	1,214,808.12	
5110	20	Special Revenue Funds					
5110	30	Capital Projects Funds					
5110	40	Debt Service Fund					
5110	90	Permanent Fund					
5120	10	General Fund	4,740,383.80			4,740,383.80	
5120	20	Special Revenue Funds					
5120	30	Capital Projects Funds					
5120	40	Debt Service Fund					

<b>Total Debt Payments - Governmental Funds</b>		<b>\$5,803,698.90</b>		<b>\$151,493.02</b>	<b>\$5,955,191.92</b>	
---	--	-----------------------	--	---------------------	-----------------------	--

Function	Fund		Principal (910)	Principal (920)	Interest (830)	Total (Principal +Interest)
5110	50	Enterprise Fund				
5110	60	Internal Service Fund				
5120	50	Enterprise Fund				
5120	60	Internal Service Fund				

<b>Total Debt Payments - Proprietary Funds</b>						
--	--	--	--	--	--	--



**General Fund (10)**

**Section 1: Tuition/Purchased Services as Reported within Expenditure Detail**

	Amount
Tuition Reported in General Fund Expenditures 1000-560	4,819,492.18
Purchased Services in General Fund Expenditures 1000-594 and 1000-597	1,804.21
<b>Section 1 Total</b>	<b>\$4,821,296.39</b>

**Section 2: Tuition Paid to Institution Types During Fiscal Year**

	Tuition Paid For Nonspecial Education	Tuition Paid For Special Education	Total
1 1306 Institutions			
2 Institutionalized Children's Programs		1,804.21	1,804.21
3 Juveniles Incarcerated in Adult Facilities		78,086.31	78,086.31
4 Residential Treatment Facilities			
5 Other Local Education Agencies		147,550.75	147,550.75
6 Brick and Mortar Charter Schools	744,656.80	550,151.69	1,294,808.49
7 Cyber Charter Schools	1,464,773.54	1,124,810.26	2,589,583.80
8 Career and Technology Centers	698,779.95		698,779.95
9 Approved Private Schools			
10 PA Chartered Schools for the Deaf and Blind			
11 Private Residential Rehabilitative Institutions	10,682.88		10,682.88
12 Juvenile Detention Centers			
13 Special Program Jointures			
14 Other Tuition Not Included Elsewhere In This Section			
<b>Section 2 Total</b>	<b>\$2,918,893.17</b>	<b>\$1,902,403.22</b>	<b>\$4,821,296.39</b>

**Food Service / Cafeteria Operations Fund (51)**

**3000 Operation of Non-Instructional Services**

	<b>Total</b>
<b>100 Personnel Services – Salaries</b>	
100 Personnel Services – Salaries	571,594.02
<b>Total Personnel Services – Salaries</b>	<b>\$571,594.02</b>
<b>200 Personnel Services – Employee Benefits</b>	
210 Group Insurance – Contracted Provider	180,025.93
220 Social Security Contributions	42,351.36
230 PSERS Retirement Contributions	189,559.07
270 Group Insurance – Self-Insurance	(41.37)
280 Other Post-Employment Benefits (OPEB)	5,748.00
291 Other Retirement Plans	(96,357.00)
<b>Total Personnel Services – Employee Benefits</b>	<b>\$321,285.99</b>
<b>400 Purchased Property Services</b>	
430 Repairs and Maintenance Services	6,973.36
<b>Total Purchased Property Services</b>	<b>\$6,973.36</b>
<b>600 Supplies</b>	
610 General Supplies	22,234.53
630 Food	348,296.58
<b>Total Supplies</b>	<b>\$370,531.11</b>
<b>700 Property</b>	
740 Depreciation	1,381.30
<b>Total Property</b>	<b>\$1,381.30</b>
<b>800 Other Objects</b>	
810 Dues and Fees	304.00
<b>Total Other Objects</b>	<b>\$304.00</b>
<b>Total 3000 Operation of Non-Instructional Services</b>	<b>\$1,272,069.78</b>

	<u>Food Service(51)</u>	<u>Child Care Operations(52)</u>	<u>Other Enterprise(58)</u>	<u>Internal Service(60)</u>	<u>Total</u>
<b>3000 <u>Operation of Non-Instructional Services</u></b>					
3100 Food Services	1,272,069.78				1,272,069.78
<b>Total Operation of Non-Instructional Services</b>	<b>\$1,272,069.78</b>				<b>\$1,272,069.78</b>
<b>TOTAL ACTUAL EXPENDITURES &amp; OTHER FINANCING USES</b>	<b>\$1,272,069.78</b>				<b>\$1,272,069.78</b>

	<u>Nonspecial Education</u>	<u>Special Education</u>
<b>1000 Instruction</b>		
1400 Other Instructional Programs - Elementary / Secondary	122,914.00	96,576.00
<b>Total Instruction</b>	<b>\$122,914.00</b>	<b>\$96,576.00</b>
<b>2000 Support Services</b>		
2100 Support Services - Students	6,248.00	4,909.00
<b>Total Support Services</b>	<b>\$6,248.00</b>	<b>\$4,909.00</b>
<b>TOTAL ACTUAL EXPENDITURES &amp; OTHER FINANCING USES</b>	<b>\$129,162.00</b>	<b>\$101,485.00</b>

LEA : 129546103 Pottsville Area SD

Printed 11/17/2021 3:29:55 PM

<b>1400 Other Instructional Programs - Elementary / Secondary</b>	<b><u>Nonspecial Education</u></b>	<b><u>Special Education</u></b>
<b>100 Personnel Services - Salaries</b>		
100 Personnel Services - Salaries	38,095.00	29,932.00
<b>Total Personnel Services - Salaries</b>	<b>\$38,095.00</b>	<b>\$29,932.00</b>
<b>200 Personnel Services - Employee Benefits</b>		
210 Group Insurance - Contracted Provider	15,385.00	12,088.00
220 Social Security Contributions	2,875.00	2,259.00
230 PSERS Retirement Contributions	13,002.00	10,216.00
<b>Total Personnel Services - Employee Benefits</b>	<b>\$31,262.00</b>	<b>\$24,563.00</b>
<b>500 Other Purchased Services</b>		
561 Tuition To Other School Districts Within the State	53,341.00	41,911.00
<b>Total Other Purchased Services</b>	<b>\$53,341.00</b>	<b>\$41,911.00</b>
<b>600 Supplies</b>		
610 General Supplies	216.00	170.00
<b>Total Supplies</b>	<b>\$216.00</b>	<b>\$170.00</b>
<b>Total 1400 Other Instructional Programs - Elementary / Secondary</b>	<b>\$122,914.00</b>	<b>\$96,576.00</b>

LEA : 129546103 Pottsville Area SD

Printed 11/17/2021 3:29:55 PM

1441 Adjudicated / Court-Placed Programs	<u>Nonspecial Education</u>	<u>Special Education</u>
<b>100 Personnel Services - Salaries</b>		
100 Personnel Services - Salaries	38,095.00	29,932.00
<b>Total Personnel Services - Salaries</b>	<b>\$38,095.00</b>	<b>\$29,932.00</b>
<b>200 Personnel Services - Employee Benefits</b>		
210 Group Insurance - Contracted Provider	15,385.00	12,088.00
220 Social Security Contributions	2,875.00	2,259.00
230 PSERS Retirement Contributions	13,002.00	10,216.00
<b>Total Personnel Services - Employee Benefits</b>	<b>\$31,262.00</b>	<b>\$24,563.00</b>
<b>500 Other Purchased Services</b>		
561 Tuition To Other School Districts Within the State	53,341.00	41,911.00
<b>Total Other Purchased Services</b>	<b>\$53,341.00</b>	<b>\$41,911.00</b>
<b>600 Supplies</b>		
610 General Supplies	216.00	170.00
<b>Total Supplies</b>	<b>\$216.00</b>	<b>\$170.00</b>
<b>Total 1441 Adjudicated / Court-Placed Programs</b>	<b>\$122,914.00</b>	<b>\$96,576.00</b>

LEA : 129546103 Pottsville Area SD

Printed 11/17/2021 3:29:55 PM

<b>2100 Support Services - Students</b>	<b><u>Nonspecial Education</u></b>	<b><u>Special Education</u></b>
<b>100 Personnel Services - Salaries</b>		
100 Personnel Services - Salaries	3,508.00	2,757.00
<b>Total Personnel Services - Salaries</b>	<b>\$3,508.00</b>	<b>\$2,757.00</b>
<b>200 Personnel Services - Employee Benefits</b>		
210 Group Insurance - Contracted Provider	1,283.00	1,008.00
220 Social Security Contributions	264.00	207.00
230 PSERS Retirement Contributions	1,193.00	937.00
<b>Total Personnel Services - Employee Benefits</b>	<b>\$2,740.00</b>	<b>\$2,152.00</b>
<b>Total 2100 Support Services - Students</b>	<b>\$6,248.00</b>	<b>\$4,909.00</b>

Nonspecial Education

Special Education

6000 Revenue from Local Sources

Total Revenue from Local Sources	\$68,904	\$54,138
Total	\$68,904	\$54,138
<b>TOTAL REVENUES</b>	<b>\$68,904</b>	<b>\$54,138</b>