

LEA Name : Pottsville Area SD
Address : 1501 W Laurel Blvd
Pottsville , PA 17901

County : Schuylkill
AUN Number : 129546103
LEA Type : SD

Annual Financial Report Accuracy Certification Statement

For Fiscal Year Ending
6/30/2022

Pennsylvania Department of Education


&

Office of Comptroller Operations

PDE-2056: Intermediate Unit

PDE-2057: School District, AVTS/CTC, Charter School,
and Special Program Jointure

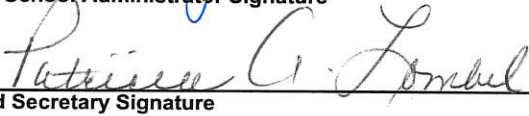
CERTIFICATION: By signing this page I agree that the electronic data submitted is a complete and accurate statement of the financial operations and status of the local education agency for the fiscal year. It has been prepared in accordance with generally accepted accounting principles and established Commonwealth of PA reporting guidelines.



Chief School Administrator Signature

11-21-22

Date



Board Secretary Signature

11-21-22

Date

Stacy D Stair

Contact Person

(570)621-2904 Ext :

Contact Person Telephone Number

sstair@pottsville.k12.pa.us

Contact Person E-mail Address

Contact Person Fax Number

Audit Certification

Annual Financial Report:

For Fiscal Year Ending 6/30/2022

(Pursuant to PA School Code Section 218(b))

LEA Name : Pottsville Area SD
AUN Number : 129546103
County : Schuylkill

Audit Certification Due:
12/31/2022

This certification is applicable to the Annual Financial Report data submitted through the Consolidated Financial Reporting System (CFRS).

CERTIFICATION: By signing this page I agree that the financial statements of the school have been properly audited as noted above pursuant to Article XXIV, and in the auditor's professional opinion, the Annual Financial Report (PDE-2057) submitted through CFRS is materially consistent with the audited financial statements.

Chief School Administrator

Amah Jordan
Signature

10-27-22
Date

Board Secretary

Patricia L. Smith
Signature

10-27-22
Date

Stacy D Stair

Contact Person

sstair@pottsville.k12.pa.us

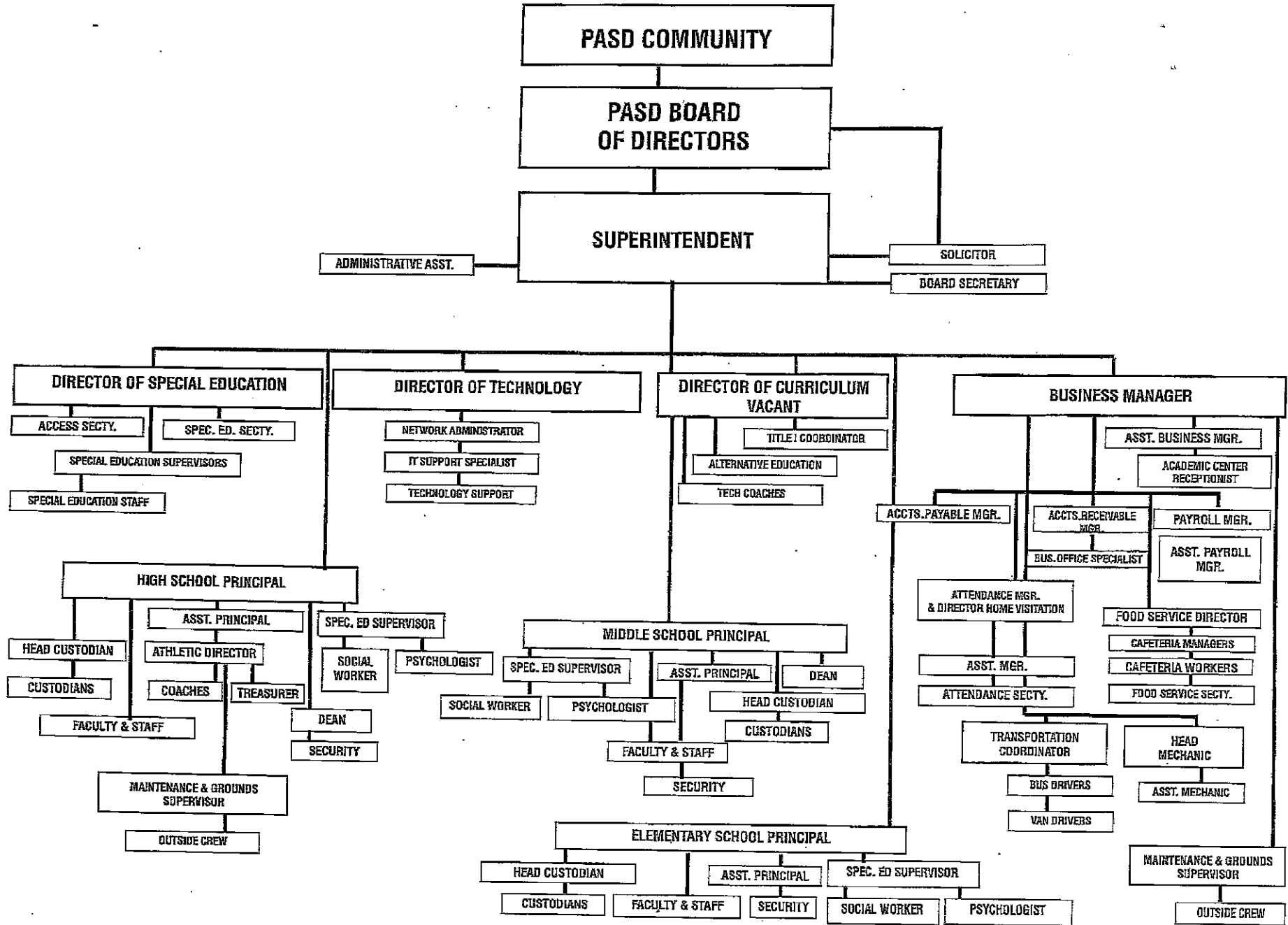
Contact Person E-mail Address

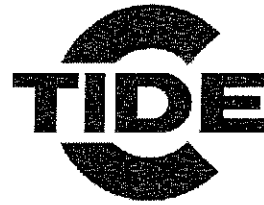
(570)621-2904

Contact Person Telephone Number

Contact Person Fax Number

ORGANIZATIONAL CHART FOR THE POTTSVILLE AREA SCHOOL DISTRICT





Book	Policy Manual
Section	600 Finances
Title	GASB Statement 34
Code	622
Status	Active
Adopted	May 13, 2009

Purpose

The Board recognizes the need to implement the required accounting and financial reporting standards stipulated by the Pennsylvania Department of Education.

The primary objectives of implementing the GASB Statement 34 are to assure compliance with state requirements, and properly account for both the financial and economic resources of the district.

Authority

Participation of the school district in any such activity shall be in accordance with Board policy.[1][2]

Delegation of Responsibility

The responsibility to coordinate the compilation and preparation of all information necessary to implement this policy is delegated to the Business Manager.

The designated individual shall be responsible for implementing the necessary procedures to establish and maintain a fixed asset inventory, including depreciation schedules. Depreciation shall be computed on a straight-line basis over the useful lives of the assets, using an averaging convention. Normal maintenance and repairs shall be charged to expense as incurred; major renewals and betterments that materially extend the life or increase the value of the asset shall be capitalized. A schedule of accumulated depreciation shall be consistent from year to year. The basis for depreciation, including groups of assets and useful lives, shall be in writing and submitted for review to the Board.

The Business Manager shall prepare the required Management Discussion and Analysis (MD&A). The MD&A shall be in the form required by GASB Statement 34 and shall be submitted to the Board for approval, prior to publication.

Prior to submission of the MD&A for Board approval, the district's independent auditors shall review the MD&A, in accordance with SAS No. 52, "Required Supplementary Information".

Guidelines

In order to associate debt with acquired assets and to avoid net asset deficits, any asset that has been acquired with debt proceeds shall be capitalized, regardless of the cost of the asset. The asset life of these assets shall be considered relative to the time of the respective debt amortizations.

For all other assets not acquired by debt proceeds, the dollar value of any single item for inclusion in the fixed assets accounts shall be not less than \$4,000.

The capitalization threshold shall be set at a level that will capture at least eighty percent (80%) of all fixed assets.

The assets listed below do not normally individually meet capitalization threshold criteria:

1. Library books.
2. Classroom texts.
3. Computer equipment.
4. Classroom furniture.

These asset category costs shall be capitalized and depreciated as groups when that group's acquisition cost exceeds the capitalization threshold in any given fiscal year.

For group asset depreciation purposes, the estimated useful life of the group may be based on the weighted average or simple average of the useful life of individual items, or on an assessment of the life of the group as a whole. Periodically, the district shall review the estimated life of groups of assets and adjust the remaining depreciation life of the group.

Assets that fall below the capitalization threshold for GASB 34 reporting purposes may still be significant for insurance, warranty service, and obsolescence/replacement policy tracking purposes. The district may record and maintain these non-GASB 34 asset inventories in subsidiary ledgers.

Legal

1. 24 P.S. 218

2. 24 P.S. 613

Governmental Accounting Standards Board, Statement No. 34

Val Number

Description

Justification

50180 SOIN: All Governmental Fund General Obligation Bonds must include an amount for Amount Due Within One Year (Principal and Interest). Correct data or enter a justification.

There is no Principal Amount Due within one year.

Amounts Expressed in Whole Dollars

Assets And Deferred Outflows Of Resources

	<u>General Fund</u> <u>(10)</u>	<u>Student Sponsored</u> <u>Activity Fund</u> <u>(21)</u>	<u>Public Purpose Trust</u> <u>(27)</u>	<u>Other Compt Approved</u> <u>(28)</u>	<u>Athletic / Activity</u> <u>(29)</u>
Assets					
0100 Cash and Cash Equivalents	11,860,987				
0110 Investments	880,403				
0120 Taxes Receivable	4,247,003				
0130 Due From Other Funds	175,399				
0141 Due From Other Governments					
0142 State Revenue Receivable					
0143 Federal Revenue Receivable					
0145 Other Intergovernmental Revenue Receivable	2,423,227				
0146 Due from Primary Government					
0147 Due from Component Unit					
0150 Other Receivables					
0170 Inventories					
0180 Prepaid Expenses (Expenditures)					
0190 Other Current Assets					
Total Assets	\$19,587,019				

Total Assets And Deferred Outflows Of Resources

0910 Deferred Outflows of Resources					
Total Assets And Deferred Outflows Of Resources	\$19,587,019				

Amounts Expressed in Whole Dollars

Assets And Deferred Outflows Of Resources

Assets

0100 Cash and Cash Equivalents	613,787				
0110 Investments					
0120 Taxes Receivable					
0130 Due From Other Funds	500,000				
0141 Due From Other Governments					
0142 State Revenue Receivable					
0143 Federal Revenue Receivable					
0145 Other Intergovernmental Revenue Receivable					
0146 Due from Primary Government					
0147 Due from Component Unit					
0150 Other Receivables					
0170 Inventories					
0180 Prepaid Expenses (Expenditures)					
0190 Other Current Assets					

Total Assets

\$1,113,787

0910 Deferred Outflows of Resources

Total Assets And Deferred Outflows Of Resources

\$1,113,787

Total Governmental Funds

Assets And Deferred Outflows Of Resources

Assets

0100 Cash and Cash Equivalents	12,474,774
0110 Investments	880,403
0120 Taxes Receivable	4,247,003
0130 Due From Other Funds	675,399
0141 Due From Other Governments	
0142 State Revenue Receivable	
0143 Federal Revenue Receivable	
0145 Other Intergovernmental Revenue Receivable	2,423,227
0146 Due from Primary Government	
0147 Due from Component Unit	
0150 Other Receivables	
0170 Inventories	
0180 Prepaid Expenses (Expenditures)	
0190 Other Current Assets	

Total Assets	\$20,700,806
---------------------	---------------------

0910 Deferred Outflows of Resources	
-------------------------------------	--

Total Assets And Deferred Outflows Of Resources	\$20,700,806
--------------------------------------------------------	---------------------

Amounts Expressed in Whole Dollars

Liabilities And Deferred Inflows Of Resources And Fund Balances

Liabilities

0400 Due to Other Funds	566,047				
0411 Due to Other Governments					
0412 Due to Primary Government					
0413 Due to Component Unit					
0420 Accounts Payable	749,189				
0430 Contracts Payable					
0440 Current Portion of Long-Term Debt					
0450 Short-Term Payables					
0461 Accrued Salaries and Benefits	3,836,351				
0462 Payroll Deductions and Withholding					
0480 Unearned Revenues					
0490 Other Current Liabilities					

Total Liabilities

\$5,151,587

0950 Deferred Inflows of Resources

3,182,191

Fund Balances

0810 Nonspendable Fund Balance					
0820 Restricted Fund Balance	880,403				
0830 Committed Fund Balance					
0840 Assigned Fund Balance	6,628,275				
0850 Unassigned Fund Balance	3,744,563				

Total Fund Balances

\$11,253,241

Total Liabilities, Deferred Inflows Of Resources And Fund Balances

\$19,587,019

Amounts Expressed in Whole Dollars

Liabilities And Deferred Inflows Of Resources And Fund Balances

Liabilities					
0400 Due to Other Funds					
0411 Due to Other Governments					
0412 Due to Primary Government					
0413 Due to Component Unit					
0420 Accounts Payable					
0430 Contracts Payable					
0440 Current Portion of Long-Term Debt					
0450 Short-Term Payables					
0461 Accrued Salaries and Benefits					
0462 Payroll Deductions and Withholding					
0480 Unearned Revenues					
0490 Other Current Liabilities					

Total Liabilities

0950 Deferred Inflows of Resources

Fund Balances

0810 Nonspendable Fund Balance					
0820 Restricted Fund Balance				1,113,787	
0830 Committed Fund Balance					
0840 Assigned Fund Balance					
0850 Unassigned Fund Balance					

Total Fund Balances

\$1,113,787

Total Liabilities, Deferred Inflows Of Resources And Fund Balances

\$1,113,787

Total Governmental Funds

Amounts Expressed in Whole Dollars

Liabilities And Deferred Inflows Of Resources And Fund Balances

Liabilities

0400 Due to Other Funds	566,047
0411 Due to Other Governments	
0412 Due to Primary Government	
0413 Due to Component Unit	
0420 Accounts Payable	749,189
0430 Contracts Payable	
0440 Current Portion of Long-Term Debt	
0450 Short-Term Payables	
0461 Accrued Salaries and Benefits	3,836,351
0462 Payroll Deductions and Withholding	
0480 Unearned Revenues	
0490 Other Current Liabilities	

Total Liabilities **\$5,151,587**

0950 Deferred Inflows of Resources	3,182,191
------------------------------------	-----------

Fund Balances

0810 Nonspendable Fund Balance	
0820 Restricted Fund Balance	1,994,190
0830 Committed Fund Balance	
0840 Assigned Fund Balance	6,628,275
0850 Unassigned Fund Balance	3,744,563

Total Fund Balances **\$12,367,028**

Total Liabilities, Deferred Inflows Of Resources And Fund Balances **\$20,700,806**

	<u>General Fund</u> <u>(10)</u>	<u>Student Sponsored</u> <u>Activity Fund</u> <u>(21)</u>	<u>Public Purpose Trust</u> <u>(27)</u>	<u>Other Compt Approved</u> <u>(28)</u>	<u>Athletic / Activity</u> <u>(29)</u>
Revenues					
6000 Revenue from Local Sources	19,429,832				
7000 Revenue from State Sources	22,491,705				
8000 Revenue from Federal Sources	3,245,361				
Total Revenues	\$45,166,898				
Expenditures					
1000 Instruction	26,209,883				
2000 Support Services	11,513,150				
3000 Operation of Non-Instructional Services	887,695				
4000 Facilities Acquisition, Construction and Improvement Services	416,964				
5110 Debt Service	475,918				
5130 Refund of Prior Year Revenues / Receipts					
5140 Leases	679,815				
Total Expenditures	\$40,183,425				
Excess (Deficiency) Of Revenues Over Expenditures	\$4,983,473				
Other Financing Sources (Uses)					
9110 Face Value of Bonds Issued	1,000,000				
9120 Proceeds from Refunding of Bonds					
9130 Bond Premiums	810,700				
9200 Proceeds from Extended-Term Financing and Leases					
9300 Interfund Transfers - IN					
9400 Sale of or Compensation for Loss of Fixed Assets	27,064				
9710 Transfers from Component Units					
9720 Transfers from Primary Governments					
9910 Other Financing Sources Not Listed in the 9000 Series					
9990 Insurance Recoveries					
5120 Debt Service – Refunded Bonds					
5150 Bond Discounts					
5200 Interfund Transfers – Out	500,000				
5300 Transfers Out to Component Units/Primary Governments					
Total Other Financing Sources (Uses)	\$1,337,764				

Amounts Expressed in Whole Dollars

	<u>Capital Reserve (690)</u> <u>1850</u> <u>(31)</u>	<u>Capital Reserve (1431)</u> <u>(32)</u>	<u>Other Capital Projects Fund</u> <u>(39)</u>	<u>Debt Service</u> <u>(40)</u>	<u>Permanent</u> <u>(90)</u>
Revenues					
6000 Revenue from Local Sources		658			
7000 Revenue from State Sources					
8000 Revenue from Federal Sources					
Total Revenues		\$658			
Expenditures					
1000 Instruction					
2000 Support Services					
3000 Operation of Non-Instructional Services					
4000 Facilities Acquisition, Construction and Improvement Services					
5110 Debt Service					
5130 Refund of Prior Year Revenues / Receipts					
5140 Leases					
Total Expenditures					
Excess (Deficiency) Of Revenues Over Expenditures		\$658			
Other Financing Sources (Uses)					
9110 Face Value of Bonds Issued					
9120 Proceeds from Refunding of Bonds					
9130 Bond Premiums					
9200 Proceeds from Extended-Term Financing and Leases					
9300 Interfund Transfers - IN		500,000			
9400 Sale of or Compensation for Loss of Fixed Assets					
9710 Transfers from Component Units					
9720 Transfers from Primary Governments					
9910 Other Financing Sources Not Listed in the 9000 Series					
9990 Insurance Recoveries					
5120 Debt Service – Refunded Bonds					
5150 Bond Discounts					
5200 Interfund Transfers – Out					
5300 Transfers Out to Component Units/Primary Governments					
Total Other Financing Sources (Uses)					\$500,000

	<u>Total Governmental Funds</u>
Revenues	
6000 Revenue from Local Sources	19,430,490
7000 Revenue from State Sources	22,491,705
8000 Revenue from Federal Sources	3,245,361
Total Revenues	\$45,167,556
Expenditures	
1000 Instruction	26,209,883
2000 Support Services	11,513,150
3000 Operation of Non-Instructional Services	887,695
4000 Facilities Acquisition, Construction and Improvement Services	416,964
5110 Debt Service	475,918
5130 Refund of Prior Year Revenues / Receipts	
5140 Leases	679,815
Total Expenditures	\$40,183,425
Excess (Deficiency) Of Revenues Over Expenditures	\$4,984,131
Other Financing Sources (Uses)	
9110 Face Value of Bonds Issued	1,000,000
9120 Proceeds from Refunding of Bonds	
9130 Bond Premiums	
9200 Proceeds from Extended-Term Financing and Leases	810,700
9300 Interfund Transfers - IN	500,000
9400 Sale of or Compensation for Loss of Fixed Assets	27,064
9710 Transfers from Component Units	
9720 Transfers from Primary Governments	
9910 Other Financing Sources Not Listed in the 9000 Series	
9990 Insurance Recoveries	
5120 Debt Service – Refunded Bonds	
5150 Bond Discounts	
5200 Interfund Transfers – Out	500,000
5300 Transfers Out to Component Units/Primary Governments	
Total Other Financing Sources (Uses)	\$1,837,764

Amounts Expressed in Whole Dollars	<u>General Fund</u> <u>(10)</u>	<u>Student Sponsored</u> <u>Activity Fund</u> <u>(21)</u>	<u>Public Purpose Trust</u> <u>(27)</u>	<u>Other Compt Approved</u> <u>(28)</u>	<u>Athletic / Activity</u> <u>(29)</u>
Special And Extraordinary Items					
9920 Special Items – Gains					
9930 Extraordinary Items – Gains					
5520 Special Items – Losses					
5530 Extraordinary Items – Losses					
Net Change In Fund Balances	\$6,321,237				
Fund Balance					
0001 Fund Balance - Beginning of Fiscal Year	4,932,003				
Fund Balance - End Of Year	\$11,253,240				

Amounts Expressed in Whole Dollars	<u>Capital Reserve (690)</u> <u>1850</u> <u>(31)</u>	<u>Capital Reserve (1431)</u> <u>(32)</u>	<u>Other Capital Projects Fund</u> <u>(39)</u>	<u>Debt Service</u> <u>(40)</u>	<u>Permanent</u> <u>(90)</u>
Special And Extraordinary Items					
9920 Special Items – Gains					
9930 Extraordinary Items – Gains					
5520 Special Items – Losses					
5530 Extraordinary Items – Losses					
Net Change In Fund Balances		\$500,658			
Fund Balance					
0001 Fund Balance - Beginning of Fiscal Year		613,129			
Fund Balance - End Of Year		\$1,113,787			

Total Governmental Funds

Special And Extraordinary Items

- 9920 Special Items – Gains
- 9930 Extraordinary Items – Gains
- 5520 Special Items – Losses
- 5530 Extraordinary Items – Losses

Net Change In Fund Balances	\$6,821,895
Fund Balance	
0001 Fund Balance - Beginning of Fiscal Year	5,545,132
Fund Balance - End Of Year	\$12,367,027

Amounts Expressed in Whole Dollars

Assets And Deferred Outflows Of Resources

Current Assets

	<u>Food Service</u> (51)	<u>Child Care</u> <u>Operations</u> (52)	<u>Other Enterprise</u> (58)	<u>TOTAL</u>	<u>Internal Service</u> (60)
0100 Cash and Cash Equivalents	589,254			589,254	
0110 Investments					
0130 Due From Other Funds	66,047			66,047	
0141 Due From Other Governments					
0142 State Revenue Receivable					
0143 Federal Revenue Receivable					
0146 Due from Primary Government					
0147 Due from Component Unit					
0150 Other Receivables	9,298			9,298	
0170 Inventories	62,183			62,183	
0180 Prepaid Expenses (Expenditures)					
0190 Other Current Assets					
Total Current Assets	\$726,782			\$726,782	

Noncurrent Assets

0211 Land					
0212 Site Improvements (Net)					
0220 Buildings and Building Improvements (Net)					
0230 Machinery, Equipment and Furniture (Net)	7,006			7,006	
0250 Construction in Progress					
0260 Long Term Prepayments					
0290 Other Noncurrent Assets					
Total Noncurrent Assets	\$7,006			\$7,006	
0910 Deferred Outflows of Resources	98,546			98,546	
Total Assets And Deferred Outflows Of Resources	\$832,334			\$832,334	

Amounts Expressed in Whole Dollars					
	<u>Food Service</u> <u>(51)</u>	<u>Child Care</u> <u>Operations</u> <u>(52)</u>	<u>Other Enterprise</u> <u>(58)</u>	<u>TOTAL</u>	<u>Internal Service</u> <u>(60)</u>
Liabilities And Deferred Inflows Of Resources And Net Position					
Current Liabilities					
0400 Due to Other Funds	175,399			175,399	
0411 Due to Other Governments					
0413 Due to Component Unit					
0420 Accounts Payable	9,271			9,271	
0430 Contracts Payable					
0440 Current Portion of Long-Term Debt					
0450 Short-Term Payables					
0461 Accrued Salaries and Benefits	3,786			3,786	
0462 Payroll Deductions and Withholding					
0480 Unearned Revenues					
0490 Other Current Liabilities					
Total Current Liabilities	\$188,456			\$188,456	
Noncurrent Liabilities					
0510 Bonds Payable					
0520 Extended-Term Financing Agreements Payable					
0530 Lease Obligations					
0540 Accumulated Compensated Absences	10,100			10,100	
0550 Authority Lease Obligations					
0560 Other Post-Employment Benefits (OPEB)	123,359			123,359	
0570 Net Pension Liability	1,744,595			1,744,595	
0599 Other Noncurrent Liabilities					
Total Noncurrent Liabilities	\$1,878,054			\$1,878,054	
Total Liabilities	\$2,066,510			\$2,066,510	
0950 Deferred Inflows of Resources	733,584			733,584	
Net Position					
0791 Net Investment in Capital Assets	7,006			7,006	
0008 Restricted Net Position (0792 – 0798)					
0799 Unrestricted Net Position	(1,974,766)			(1,974,766)	
Total Net Position	(\$1,967,760)			(\$1,967,760)	
Total Liabilities And Deferred Inflows Of Resources And Net Position	\$832,334			\$832,334	

Amounts Expressed in Whole Dollars

	<u>Food Service</u> <u>(51)</u>	<u>Child Care Operations</u> <u>(52)</u>	<u>Other Enterprise</u> <u>(58)</u>	<u>TOTAL</u>	<u>Internal Service</u> <u>(60)</u>
Operating Revenues					
6600 Food Service Revenue	221,032			221,032	
0071 Charges for Services					
0072 Other Operating Revenue	14,900			14,900	
Total Operating Revenues	\$235,932			\$235,932	
Operating Expenses					
100 Personnel Services – Salaries	642,174			642,174	
200 Personnel Services – Employee Benefits	206,212			206,212	
300 Purchased Professional and Technical Services					
400 Purchased Property Services	2,334			2,334	
500 Other Purchased Services					
600 Supplies	706,561			706,561	
740 Depreciation	1,382			1,382	
810 Dues and Fees					
880 Refunds of Prior Years' Receipts					
890 Miscellaneous Expenditures	304			304	
Total Operating Expenses	\$1,558,967			\$1,558,967	
Operating Income (Loss)	(\$1,323,035)			(\$1,323,035)	
Non Operating Revenues (Expenses)					
6500 Earnings on Investments	818			818	
6920 Contributions and Donations from Private Sources					
6930 Gains or Losses on Sale of Fixed Assets					
6991 Refunds of a Prior Year Expenditure					
7000 Revenue from State Sources	228,233			228,233	
8000 Revenue from Federal Sources	1,671,142			1,671,142	
9990 Insurance Recoveries					
820 Claims and Judgments Against the LEA					
830 Interest					
TOTAL Non Operating Revenues (Expenses)	\$1,900,193			\$1,900,193	
Income (Loss) Before Contributions And Transfers	\$577,158			\$577,158	

Amounts Expressed in Whole Dollars

Contributions, Transfers, and Special and Extraordinary Items

5200	Interfund Transfers – Out				
5300	Transfers Out to Component Units/Primary Governments				
5520	Special Items – Losses				
5530	Extraordinary Items – Losses				
9300	Interfund Transfers - IN				
9500	Capital Contributions				
9700	Transfers IN From Component Units/Primary Governments				
9920	Special Items – Gains				
9930	Extraordinary Items – Gains				

Change in Net Position

	\$577,158	\$577,158
0002 Net Position - Beginning of Fiscal Year	(2,544,918)	(2,544,918)

0003 Accounting Changes / Residual Equity Transfers

Net Position - End Of Year

	(\$1,967,760)	(\$1,967,760)
--	----------------------	----------------------

	<u>Food Service</u> <u>(51)</u>	<u>Child Care Operations</u> <u>(52)</u>	<u>Other Enterprise</u> <u>(58)</u>	<u>TOTAL</u>
Cash Flows From Operating Activities				
0011 Cash Receipts From Users	235,932			235,932
0012 Cash Receipts From Assessments Made to Other Funds				
0013 Cash Receipts From Earnings on Investments				
0014 Cash Receipts From Other Operating Revenue				
0015 Cash Payments To Employees For Services	1,098,259			1,098,259
0016 Cash Payments For Insurance Claims				
0017 Cash Payments To Suppliers For Goods and Services	736,549			736,549
0018 Cash Payments For Other Operating Expenses				
Net Cash Provided By (Used For) Operating Activities	(\$1,598,876)			(\$1,598,876)
Cash Flows From Non-Capital Financing Activities				
0021 Receipts From Local Sources - 6000				
0022 Receipts From State Sources - 7000	228,233			228,233
0023 Receipts From Federal Sources -8000	1,671,142			1,671,142
0024 Notes and Loans Received (Repaid)				
0025 Interest Paid on Notes/Loans - 5100-830				
0026 Operating Transfers In (Out)/Residual Equity Trans				
0027 Operating Transfers In (Out) Primary Government / Comp Unit				
0028 Receipts From Refund of Prior Year Expenditures - 6991				
0029 Special and Extraordinary Gains (losses)				
0030 Receipts from Insurance Recoveries -9990				
Net Cash Prov By (Used for) Non-Capital Financing Activities	\$1,899,375			\$1,899,375
Cash Flows From Capital and Related Financing Activities				
0031 Payments For Fac Acq, Const, and Imp - 4000				
0032 Gain / (Loss) on Sale of Fixed Assets - 6930				
0033 Proceeds From Extended Term Financing - 9200				
0034 Principal Paid on Financing Agreements				
0035 Interest Paid on Financing Agreements - 5100-830				
0036 (Inc) Dec in Contributed Capital				
Net Cash Prov By (Used for) Capital and Related Financing Activities				
Cash Flows From Investing Activities				
0041 Earnings on Investments - 6500				818
0042 Purchase of Inv Securities / Deposits to Inv Pools				
0043 Receipts From Investment Pool Withdrawals				
0044 Proceeds from Sale and Maturity of Inv Securities				

0045 Loans Received (Paid)

Net Cash Prov By (Used for) Investing Activities

\$818

\$818

	<u>Food Service</u> (51)	<u>Child Care Operations</u> (52)	<u>Other Enterprise</u> (58)	<u>TOTAL</u>	<u>Internal Service</u> (60)
Net Increase (Decrease) in Cash Flows	301,317			301,317	
0004 Cash and Cash Equivalents Beginning of Year	287,937			287,937	
Cash and Cash Equivalents at Year End	\$589,254			\$589,254	
Reconciliation of Operating Income (Loss) To Net Cash Provided by (Used For) Operating Activities					
0005 Operating Income (Loss) per REP	(1,323,035)			(1,323,035)	
Adjustments					
0051 Depreciation and Net Amortization	1,382			1,382	
0052 Provision for Uncollectible Accounts					
0053 Other Adjustments					
Effect of Changes in Assets, Liabilities, Deferred Outflows and Deferred Inflows					
0054 (Inc) Dec In Accounts Receivable (0120-0150)	38,099			38,099	
0055 Advances to Other Funds (0160)	(103,644)			(103,644)	
0056 (Inc) Dec in Inventories (0170)	(1,538)			(1,538)	
0057 (Inc) Dec in Prepaid Expenses (0180)					
0058 (Inc) Dec in Other Current or Noncurrent Assets					
0064 Deferred Outflows (0910)	17,489			17,489	
0059 Inc (Dec) in Accounts Payable (0400-0450)	(4,226)			(4,226)	
0060 Inc (Dec) in Accrued Salaries/Benefits (0461)	540			540	
0065 Inc (Dec) in Net Pension Liabilities (0570)	(597,762)			(597,762)	
0066 Inc (Dec) in Other Postemp Benefit Oblig (0560)	(2,073)			(2,073)	
0061 Inc (Dec) in Payroll Deductions/Withholding (0462)	675			675	
0062 Inc (Dec) in Unearned Revenue (0480)	27,328			27,328	
0063 Inc (Dec) in Other Current or Noncurrent Liabilities					
0067 Deferred Inflows (0950)	347,889			347,889	
Total Adjustments	(\$275,841)			(\$275,841)	
Cash Provided By (Used for) Total	(\$1,598,876)			(\$1,598,876)	

COMBINED STATEMENT OF CASH FLOWS
SCHEDULE OF NONCASH INVESTING, CAPITAL, AND FINANCING ACTIVITIES

Explanation of Transaction and Balance Sheet Effect	Amount
Total	

Amounts Expressed in Whole Dollars

Private Purpose Trust (71) Investment Trust (72) Pension Trust (73) Student Activity Custodial (81)

Assets And Deferred Outflows Of Resources

Assets

0100 Cash and Cash Equivalents	22,589			
0110 Investments				
0130 Due From Other Funds				
0140 Due from Other Governments, Primary Government and Component Units				
0150 Other Receivables				
0170 Inventories				
0180 Prepaid Expenses (Expenditures)				
0190 Other Current Assets				
0220 Buildings and Building Improvements (Net)				
0230 Machinery, Equipment and Furniture (Net)				

Total Assets

\$22,589

0910 Deferred Outflows of Resources

Total Assets And Deferred Outflows Of Resources

\$22,589

Amounts Expressed in Whole Dollars

Assets And Deferred Outflows Of Resources

Assets

0100 Cash and Cash Equivalents			412,545
0110 Investments	389,956		
0130 Due From Other Funds			
0140 Due from Other Governments, Primary Government and Component Units			
0150 Other Receivables			
0170 Inventories			
0180 Prepaid Expenses (Expenditures)			
0190 Other Current Assets			
0220 Buildings and Building Improvements (Net)			
0230 Machinery, Equipment and Furniture (Net)			

Total Assets

\$389,956

\$412,545

0910 Deferred Outflows of Resources

Total Assets And Deferred Outflows Of Resources

\$389,956

\$412,545

Total Fiduciary Funds

Fiduciary Component Units
(98)

Other Custodial
(89)

Liabilities, Deferred Inflows Of Resources And Net Position

Liabilities

0400 Due to Other Funds			
0410 Due to Other Governments, Primary Government and Component Units			
0420 Accounts Payable			
0430 Contracts Payable			
0450 Short-Term Payables			
0460 Payroll Accruals and Withholdings			
0480 Unearned Revenues			
0490 Other Current Liabilities			

Total Liabilities

0950 Deferred Inflows of Resources

Net Position

0791 Net Investment in Capital Assets	22,589
0009 Restricted Net Position (0792 – 0798)	
0799 Unrestricted Net Position	

Total Net Position

\$22,589
\$22,589

Total Liabilities, Deferred Inflows Of Resources And Net Position

Amounts Expressed in Whole Dollars

Other Custodial Fiduciary Component Units Total Fiduciary Funds
 (89) (98)

Liabilities, Deferred Inflows Of Resources And Net Position

Liabilities

0400 Due to Other Funds			
0410 Due to Other Governments, Primary Government and Component Units			
0420 Accounts Payable			
0430 Contracts Payable			
0450 Short-Term Payables			
0460 Payroll Accruals and Withholdings			
0480 Unearned Revenues			
0490 Other Current Liabilities			

Total Liabilities

0950 Deferred Inflows of Resources

Net Position

0791 Net Investment in Capital Assets			
0009 Restricted Net Position (0792 – 0798)	389,956		412,545
0799 Unrestricted Net Position			

Total Net Position

	\$389,956		\$412,545
	\$389,956		\$412,545

Total Liabilities, Deferred Inflows Of Resources And Net Position

Amounts Expressed in Whole Dollars		Private Purpose Trust (71)	Investment Trust (72)	Pension Trust (73)	Student Activity Custodial (81)	Other Custodial (89)	Fiduciary Component Units (98)
Additions							
0091	Gifts and Contributions	1,101					
0095	Net Investment Earnings	231					
0092	Other Additions					395,266	
Deductions							
0093	Scholarships Awarded	1,620					
0094	Other Deductions					384,386	
Change in Net Position		(\$288)				\$10,880	
0006	Net Position – Beginning of Fiscal Year	22,877				379,076	
0007	Net Position Held in Trust for Pension Benefits						
Net Position - End of Fiscal Year		\$22,589				\$389,956	

Amounts Expressed in Whole Dollars		<u>Total Fiduciary Funds</u>
Additions		
0091	Gifts and Contributions	1,101
0095	Net Investment Earnings	231
0092	Other Additions	395,266
Deductions		
0093	Scholarships Awarded	1,620
0094	Other Deductions	384,386
Change in Net Position		\$10,592
0006	Net Position – Beginning of Fiscal Year	401,953
0007	Net Position Held in Trust for Pension Benefits	
Net Position - End of Fiscal Year		\$412,545

	<u>Revenue Reported In Current Year</u>	<u>Current Year Tax Accrual</u>	<u>Prior Year Tax Accrual</u>	<u>Taxes Collected In Current Year</u>
<u>Revenue from Local Sources</u>				
6111 Current Real Estate Taxes	10,862,298.89			10,862,298.89
6113 Public Utility Realty Taxes	15,344.78			15,344.78
6114 Payments in Lieu of Current Taxes - State / Local	1,300.00			1,300.00
6120 Current Per Capita Taxes, Section 679	38,738.20			38,738.20
6141 Current Act 511 Per Capita Taxes	38,738.20			38,738.20
6143 Current Act 511 Local Services Taxes	46,240.60	13,038.14	11,203.76	44,406.22
6151 Current Act 511 Earned Income Taxes	1,997,208.52	427,261.55	374,831.40	1,944,778.37
6152 Current Act 511 Occupation Taxes	543,962.02			543,962.02
6153 Current Act 511 Real Estate Transfer Taxes	357,970.73	22,211.82	88,758.12	424,517.03
6155 Current Act 511 Business Privilege Taxes	932,928.65	211,844.12	200,998.31	922,082.84
6411 Delinquent Real Estate Taxes	1,102,574.06	268,217.41	155,788.17	990,144.82
6420 Delinquent Per Capita Taxes, Section 679	15,304.74			15,304.74
6440 Delinquent Local Enabling Taxes - Flat Rate Assessments	15,717.72			15,717.72
6451 Delinquent Act 511 Earned Income Taxes	30,779.50			30,779.50
6452 Delinquent Act 511 Occupation Taxes	343,241.43	28,777.22	42,886.57	357,350.78
6455 Delinquent Act 511 Business Privilege Taxes	50,899.76			50,899.76
6500 Earnings on Investments	45,057.76			
6700 Revenues from LEA Activities	139,940.95			
6831 Federal Revenue Received from Other Pennsylvania Public LEAs	89,978.13			
6832 Federal IDEA Revenue Received as Pass Through	454,511.42			
6910 Rentals	16,360.37			
6920 Contributions and Donations from Private Sources	234,678.91			
6941 Regular Day School Tuition	4,374.08			
6942 Summer School Tuition	3,220.00			
6944 Receipts from Other LEAs in Pennsylvania - Education	1,740,310.69			
6961 Transportation Services Provided Other Pennsylvania LEAs	32,744.90			
6962 Other Services Provided Other Pennsylvania LEAs	110,695.83			
6970 Services Provided Other Funds	1,520.56			
6991 Refunds of a Prior Year Expenditure	71,779.73			
6992 Energy Efficiency Revenues and Incentives	57,971.58			
6999 Other Revenues Not Specified Above	33,439.59			
TOTAL Revenue from Local Sources	\$19,429,832.30	\$971,350.26	\$874,466.33	\$16,296,363.87

	<u>Revenue Reported In Current Year</u>
<u>Revenue from State Sources</u>	
7111 Basic Education Funding-Formula	14,523,118.80
7112 Basic Education Funding-Social Security	697,621.40
7160 Tuition for Orphans Subsidy	11,024.62
7271 Special Education funds for School-Aged Pupils	2,059,237.57
7311 Pupil Transportation Subsidy	399,061.72
7312 Nonpublic and Charter School Pupil Transportation Subsidy	70,840.00
7330 Health Services (Medical, Dental, Nurse, Act 25)	48,306.53
7340 State Property Tax Reduction Allocation	704,521.20
7361 School Safety and Security Grants	24,476.01
7505 Ready to Learn Block Grant	488,569.00
7820 State Share of Retirement Contributions	3,464,928.53
TOTAL Revenue from State Sources	\$22,491,705.38

**Revenue Reported
In Current Year**

Revenue from Federal Sources

8514	NCLB, Title I - Improving the Academic Achievement of the Disadvantaged	862,421.59
8515	NCLB, Title II - Preparing, Training and Recruiting High Quality Teachers and Principals	124,376.21
8517	NCLB, Title IV - 21st Century Schools	60,655.69
8741	Elementary and Secondary School Emergency Relief Fund (ESSER)	300,387.49
8742	Governor's Emergency Education Relief Fund (GEER)	51,724.95
8743	ESSER II - Elementary and Secondary School Emergency Relief Fund	1,203,511.64
8744	ARP ESSER - Elementary and Secondary School Emergency Relief Fund	432,894.26
8749	Other CARES Act Funding	2,302.00
8751	ARP ESSER Learning Loss	37,906.04
8752	ARP ESSER Summer Programs	7,581.16
8753	ARP ESSER Afterschool Programs	7,581.22
8810	School-Based Access Medicaid Reimbursement Program (SBAP) Reimbursements (Access)	130,324.30
8820	Medical Assistance Reimbursement for Administrative Claiming (Quarterly) Program	23,694.54

TOTAL Revenue from Federal Sources **\$3,245,361.09**

	<u>Revenue Reported In Current Year</u>
<u>Other Financing Sources</u>	
9110 Face Value of Bonds Issued	1,000,000.00
9290 Other Extended-Term Financing Proceeds	810,700.00
9400 Sale of or Compensation for Loss of Fixed Assets	27,064.09
TOTAL Other Financing Sources	\$1,837,764.09
TOTAL FROM ALL SOURCES	\$47,004,662.86
	\$971,350.26
	\$874,466.33
	\$16,296,363.87

	<u>General Fund (10)</u>	<u>Student Sponsored Activity Fund (21)</u>	<u>Public Purpose Trust (27)</u>	<u>Other Compt. Approved (28)</u>	<u>Athletic / Activity (29)</u>	<u>Capital Reserve (690,1850) (31)</u>
6000 Revenue from Local Sources						
6111 Current Real Estate Taxes	10,862,298.89					
6113 Public Utility Realty Taxes	15,344.78					
6114 Payments in Lieu of Current Taxes - State / Local	1,300.00					
6120 Current Per Capita Taxes, Section 679	38,738.20					
6141 Current Act 511 Per Capita Taxes	38,738.20					
6143 Current Act 511 Local Services Taxes	46,240.60					
6151 Current Act 511 Earned Income Taxes	1,997,208.52					
6152 Current Act 511 Occupation Taxes	543,962.02					
6153 Current Act 511 Real Estate Transfer Taxes	357,970.73					
6155 Current Act 511 Business Privilege Taxes	932,928.65					
6411 Delinquent Real Estate Taxes	1,102,574.06					
6420 Delinquent Per Capita Taxes, Section 679	15,304.74					
6440 Delinquent Local Enabling Taxes - Flat Rate Assessments	15,717.72					
6451 Delinquent Act 511 Earned Income Taxes	30,779.50					
6452 Delinquent Act 511 Occupation Taxes	343,241.43					
6455 Delinquent Act 511 Business Privilege Taxes	50,899.76					
6500 Earnings on Investments	45,057.76					
6700 Revenues from LEA Activities	139,940.95					
6831 Federal Revenue Received from Other Pennsylvania Public LEAs	89,978.13					
6832 Federal IDEA Revenue Received as Pass Through	454,511.42					
6910 Rentals	16,360.37					
6920 Contributions and Donations from Private Sources	234,678.91					
6941 Regular Day School Tuition	4,374.08					
6942 Summer School Tuition	3,220.00					
6944 Receipts from Other LEAs in Pennsylvania - Education	1,740,310.69					
6961 Transportation Services Provided Other Pennsylvania LEAs	32,744.90					
6962 Other Services Provided Other Pennsylvania LEAs	110,695.83					
6970 Services Provided Other Funds	1,520.56					
6991 Refunds of a Prior Year Expenditure	71,779.73					
6992 Energy Efficiency Revenues and Incentives	57,971.58					
6999 Other Revenues Not Specified Above	33,439.59					
6000 Total Revenue from Local Sources	\$19,429,832.30					
7000 Revenue from State Sources						
7111 Basic Education Funding-Formula	14,523,118.80					
7112 Basic Education Funding-Social Security	697,621.40					

	<u>Capital Reserve (1431) (32)</u>	<u>Other Capital Projects Fund (39)</u>	<u>Debt Service (40)</u>	<u>Permanent (90)</u>	<u>Total</u>
6000 Revenue from Local Sources					
6111 Current Real Estate Taxes					10,862,298.89
6113 Public Utility Realty Taxes					15,344.78
6114 Payments in Lieu of Current Taxes - State / Local					1,300.00
6120 Current Per Capita Taxes, Section 679					38,738.20
6141 Current Act 511 Per Capita Taxes					38,738.20
6143 Current Act 511 Local Services Taxes					46,240.60
6151 Current Act 511 Earned Income Taxes					1,997,208.52
6152 Current Act 511 Occupation Taxes					543,962.02
6153 Current Act 511 Real Estate Transfer Taxes					357,970.73
6155 Current Act 511 Business Privilege Taxes					932,928.65
6411 Delinquent Real Estate Taxes					1,102,574.06
6420 Delinquent Per Capita Taxes, Section 679					15,304.74
6440 Delinquent Local Enabling Taxes - Flat Rate Assessments					15,717.72
6451 Delinquent Act 511 Earned Income Taxes					30,779.50
6452 Delinquent Act 511 Occupation Taxes					343,241.43
6455 Delinquent Act 511 Business Privilege Taxes					50,899.76
6500 Earnings on Investments	658.34				45,716.10
6700 Revenues from LEA Activities					139,940.95
6831 Federal Revenue Received from Other Pennsylvania Public LEAs					89,978.13
6832 Federal IDEA Revenue Received as Pass Through					454,511.42
6910 Rentals					16,360.37
6920 Contributions and Donations from Private Sources					234,678.91
6941 Regular Day School Tuition					4,374.08
6942 Summer School Tuition					3,220.00
6944 Receipts from Other LEAs in Pennsylvania - Education					1,740,310.69
6961 Transportation Services Provided Other Pennsylvania LEAs					32,744.90
6962 Other Services Provided Other Pennsylvania LEAs					110,695.83
6970 Services Provided Other Funds					1,520.56
6991 Refunds of a Prior Year Expenditure					71,779.73
6992 Energy Efficiency Revenues and Incentives					57,971.58
6999 Other Revenues Not Specified Above					33,439.59
6000 Total Revenue from Local Sources	\$658.34				\$19,430,490.64
7000 Revenue from State Sources					
7111 Basic Education Funding-Formula					14,523,118.80
7112 Basic Education Funding-Social Security					697,621.40

	<u>General Fund (10)</u>	<u>Student Sponsored Activity Fund (21)</u>	<u>Public Purpose Trust (27)</u>	<u>Other Compt. Approved (28)</u>	<u>Athletic / Activity (29)</u>	<u>Capital Reserve (690, 1850) (31)</u>
7000 Revenue from State Sources						
7160 Tuition for Orphans Subsidy	11,024.62					
7271 Special Education funds for School-Aged Pupils	2,059,237.57					
7311 Pupil Transportation Subsidy	399,061.72					
7312 Nonpublic and Charter School Pupil Transportation Subsidy	70,840.00					
7330 Health Services (Medical, Dental, Nurse, Act 25)	48,306.53					
7340 State Property Tax Reduction Allocation	704,521.20					
7361 School Safety and Security Grants	24,476.01					
7505 Ready to Learn Block Grant	488,569.00					
7820 State Share of Retirement Contributions	3,464,928.53					
7000 Total Revenue from State Sources	\$22,491,705.38					
8000 Revenue from Federal Sources						
8514 NCLB, Title I - Improving the Academic Achievement of the Disadvantaged	862,421.59					
8515 NCLB, Title II - Preparing, Training and Recruiting High Quality Teachers and Principals	124,376.21					
8517 NCLB, Title IV - 21st Century Schools	60,655.69					
8741 Elementary and Secondary School Emergency Relief Fund (ESSER)	300,387.49					
8742 Governor's Emergency Education Relief Fund (GEER)	51,724.95					
8743 ESSER II - Elementary and Secondary School Emergency Relief Fund	1,203,511.64					
8744 ARP ESSER - Elementary and Secondary School Emergency Relief Fund	432,894.26					
8749 Other CARES Act Funding	2,302.00					
8751 ARP ESSER Learning Loss	37,906.04					
8752 ARP ESSER Summer Programs	7,581.16					
8753 ARP ESSER Afterschool Programs	7,581.22					
8810 School-Based Access Medicaid Reimbursement Program (SBAP) Reimbursements (Access)	130,324.30					
8820 Medical Assistance Reimbursement for Administrative Claiming (Quarterly) Program	23,694.54					
8000 Total Revenue from Federal Sources	\$3,245,361.09					
9000 Other Financing Sources						
9110 Face Value of Bonds Issued	1,000,000.00					
9290 Other Extended-Term Financing Proceeds	810,700.00					
9310 General Fund Transfers						
9400 Sale of or Compensation for Loss of Fixed Assets	27,064.09					
9000 Total Other Financing Sources	\$1,837,764.09					
Total From All Sources	\$47,004,662.86					

	<u>Capital Reserve</u> <u>(1431) (32)</u>	<u>Other Capital</u> <u>Projects Fund (39)</u>	<u>Debt Service (40)</u>	<u>Permanent (90)</u>	<u>Total</u>
7000 Revenue from State Sources					
7160 Tuition for Orphans Subsidy					11,024.62
7271 Special Education funds for School-Aged Pupils					2,059,237.57
7311 Pupil Transportation Subsidy					399,061.72
7312 Nonpublic and Charter School Pupil Transportation Subsidy					70,840.00
7330 Health Services (Medical, Dental, Nurse, Act 25)					48,306.53
7340 State Property Tax Reduction Allocation					704,521.20
7361 School Safety and Security Grants					24,476.01
7505 Ready to Learn Block Grant					488,569.00
7820 State Share of Retirement Contributions					3,464,928.53
7000 Total Revenue from State Sources					\$22,491,705.38
8000 Revenue from Federal Sources					
8514 NCLB, Title I - Improving the Academic Achievement of the Disadvantaged					862,421.59
8515 NCLB, Title II - Preparing, Training and Recruiting High Quality Teachers and Principals					124,376.21
8517 NCLB, Title IV - 21st Century Schools					60,655.69
8741 Elementary and Secondary School Emergency Relief Fund (ESSER)					300,387.49
8742 Governor's Emergency Education Relief Fund (GEER)					51,724.95
8743 ESSER II - Elementary and Secondary School Emergency Relief Fund					1,203,511.64
8744 ARP ESSER - Elementary and Secondary School Emergency Relief Fund					432,894.26
8749 Other CARES Act Funding					2,302.00
8751 ARP ESSER Learning Loss					37,906.04
8752 ARP ESSER Summer Programs					7,581.16
8753 ARP ESSER Afterschool Programs					7,581.22
8810 School-Based Access Medicaid Reimbursement Program (SBAP) Reimbursements (Access)					130,324.30
8820 Medical Assistance Reimbursement for Administrative Claiming (Quarterly) Program					23,694.54
8000 Total Revenue from Federal Sources					\$3,245,361.09
9000 Other Financing Sources					
9110 Face Value of Bonds Issued					1,000,000.00
9290 Other Extended-Term Financing Proceeds					810,700.00
9310 General Fund Transfers	500,000.00				500,000.00
9400 Sale of or Compensation for Loss of Fixed Assets					27,064.09
9000 Total Other Financing Sources	\$500,000.00				\$2,337,764.09
Total From All Sources	\$500,658.34				\$47,505,321.20

	<u>General Fund (10)</u>	<u>Student Sponsored Activity Fund (21)</u>	<u>Public Purpose Trust (27)</u>	<u>Other Compt Approved (28)</u>	<u>Athletic / Activity (29)</u>	<u>Capital Reserve (690-1850) (31)</u>
Revenue from Local Sources	19,429,832.30					
Revenue from State Sources	22,491,705.38					
Revenue from Federal Sources	3,245,361.09					
Other Financing Sources	1,837,764.09					
Total From All Sources	\$47,004,662.86					

	<u>Capital Reserve (1431)</u> <u>(32)</u>	<u>Other Capital Projects</u> <u>Fund (39)</u>	<u>Debt Service (40)</u>	<u>Permanent (90)</u>	<u>Total</u>
Revenue from Local Sources	658.34				19,430,490.64
Revenue from State Sources					22,491,705.38
Revenue from Federal Sources					3,245,361.09
Other Financing Sources	500,000.00				2,337,764.09
Total From All Sources	\$500,658.34				\$47,505,321.20

General Fund (10)		
1000 Instruction		Total
100 Personnel Services – Salaries		
100 Personnel Services – Salaries	10,706,908.36	
Total Personnel Services – Salaries	\$10,706,908.36	
200 Personnel Services – Employee Benefits		
210 Group Insurance – Contracted Provider	3,201,838.88	
220 Social Security Contributions	799,890.28	
230 PSERS Retirement Contributions	3,708,228.09	
250 Unemployment Compensation	10,501.63	
260 Workers' Compensation	39,185.16	
270 Group Insurance – Self-Insurance	(16,104.01)	
280 Other Post-Employment Benefits (OPEB)	199,595.28	
Total Personnel Services – Employee Benefits	\$7,943,135.31	
300 Purchased Professional and Technical Services		
322 Professional Educational Services – Ius	1,861,906.04	
323 Professional Educational Services – Other Educational Agencies	5,165.00	
329 Professional Educational Services – Other	295,016.96	
330 Other Professional Services	139,497.76	
Total Purchased Professional and Technical Services	\$2,301,585.76	
400 Purchased Property Services		
430 Repairs and Maintenance Services	6,891.45	
Total Purchased Property Services	\$6,891.45	
500 Other Purchased Services		
550 Printing and Binding	747.02	
561 Tuition To Other School Districts Within the State	508,377.94	
562 Tuition To Pennsylvania Charter Schools	3,453,690.72	
564 Tuition To Career and Technology Centers	765,964.89	
568 Tuition To Private Residential Rehabilitative Institutions (PRR) [In-State] and Detention Centers	13,062.12	
569 Tuition – Other	75,395.80	
580 Travel	128.70	
594 IU Payment By Withholding for Institutionalized Children's Programs – Special Classes	332.79	
Total Other Purchased Services	\$4,817,699.98	
600 Supplies		
610 General Supplies	149,854.84	
640 Books and Periodicals	142,591.87	
650 Supplies & Fees – Technology Related	130,168.94	
Total Supplies	\$422,615.65	
800 Other Objects		
810 Dues and Fees	5,670.00	
890 Miscellaneous Expenditures	5,376.00	
Total Other Objects	\$11,046.00	
Total 1000 Instruction	\$26,209,882.51	

General Fund (10)

1100 Regular Programs – Elementary / Secondary

100 Personnel Services – Salaries

	Elementary	Secondary	Federal	Total
100 Personnel Services – Salaries	3,102,423.28	3,563,343.59	890,576.36	7,556,343.23
Total Personnel Services – Salaries	\$3,102,423.28	\$3,563,343.59	\$890,576.36	\$7,556,343.23

200 Personnel Services – Employee Benefits

210 Group Insurance – Contracted Provider	962,482.29	1,058,469.41	264,549.86	2,285,501.56
220 Social Security Contributions	237,143.19	265,135.99	61,174.51	563,453.69
230 PSERS Retirement Contributions	1,096,367.99	1,232,714.77	281,826.04	2,610,908.80
250 Unemployment Compensation	649.70	649.70		1,299.40
260 Workers' Compensation	17,755.81	21,429.35	39,185.16	39,185.16
270 Group Insurance – Self-Insurance	(7,584.30)	(7,584.31)	(15,168.61)	(15,168.61)
280 Other Post-Employment Benefits (OPEB)	77,847.64	77,847.64		155,695.28
Total Personnel Services – Employee Benefits	\$2,384,662.32	\$2,648,662.55	\$607,550.41	\$5,640,875.28

300 Purchased Professional and Technical Services

322 Professional Educational Services – Ius	4,407.43	31,622.00	409,648.30	445,677.73
329 Professional Educational Services – Other	122,028.58	103,620.07	69,368.31	295,016.96
330 Other Professional Services		2,500.00		2,500.00
Total Purchased Professional and Technical Services	\$126,436.01	\$137,742.07	\$479,016.61	\$743,194.69

400 Purchased Property Services

430 Repairs and Maintenance Services		6,891.45		6,891.45
Total Purchased Property Services		\$6,891.45		\$6,891.45

500 Other Purchased Services

550 Printing and Binding	301.76	445.26		747.02
561 Tuition To Other School Districts Within the State		12,063.81		12,063.81
562 Tuition To Pennsylvania Charter Schools	807,441.37	764,265.20		1,571,706.57
568 Tuition To Private Residential Rehabilitative Institutions (PRR) [(In-State) and Detention Centers	6,531.06	6,531.06		13,062.12
580 Travel	64.35	64.35		128.70
Total Other Purchased Services	\$814,338.54	\$783,369.68		\$1,597,708.22

600 Supplies

610 General Supplies	50,646.92	54,935.67	34,607.47	140,190.06
640 Books and Periodicals	61,171.59	1,757.74	63,860.73	126,790.06
650 Supplies & Fees – Technology Related	17,583.95	16,416.02	87,100.39	121,100.36
Total Supplies	\$129,402.46	\$73,109.43	\$185,568.59	\$388,080.48

800 Other Objects

810 Dues and Fees	550.00	3,850.00		4,400.00
890 Miscellaneous Expenditures	5,376.00			5,376.00
Total Other Objects	\$5,926.00	\$3,850.00		\$9,776.00

Total 1100 Regular Programs – Elementary / Secondary

	\$6,563,188.61	\$7,216,968.77	\$2,162,711.97	\$15,942,869.35
--	-----------------------	-----------------------	-----------------------	------------------------

General Fund (10)

1110 Regular Programs

100 Personnel Services – Salaries

Elementary	Secondary	Federal	Total
3,102,423.28	3,563,343.59	192,498.74	6,858,265.61
\$3,102,423.28	\$3,563,343.59	\$192,498.74	\$6,858,265.61

200 Personnel Services – Employee Benefits

962,482.29	1,058,469.41	21,368.47	2,042,320.17
237,143.19	265,135.99	14,273.01	516,552.19
1,096,367.99	1,232,714.77	67,259.17	2,396,341.93
649.70	649.70		1,299.40
17,755.81	21,429.35		39,185.16
(7,584.30)	(7,584.31)		(15,168.61)
77,847.64	77,847.64		155,695.28
\$2,384,662.32	\$2,648,662.55	\$102,900.65	\$5,136,225.52

300 Purchased Professional and Technical Services

4,407.43	31,622.00	393,258.30	429,287.73
122,028.58	103,620.07		225,648.65
	2,500.00		2,500.00
\$126,436.01	\$137,742.07	\$393,258.30	\$657,436.38

400 Purchased Property Services

	6,891.45		6,891.45
	\$6,891.45		\$6,891.45

500 Other Purchased Services

301.76	445.26		747.02
	12,063.81		12,063.81
807,441.37	764,265.20		1,571,706.57
6,531.06	6,531.06		13,062.12
64.35	64.35		128.70
\$814,338.54	\$783,369.68		\$1,597,708.22

600 Supplies

50,646.92	54,935.67	4,345.03	109,927.62
61,171.59	1,757.74		62,929.33
17,583.95	16,416.02	4,495.00	38,494.97
\$129,402.46	\$73,109.43	\$8,840.03	\$211,351.92

800 Other Objects

550.00	3,850.00		4,400.00
5,376.00			5,376.00
\$5,926.00	\$3,850.00		\$9,776.00

Total 1110 Regular Programs

\$6,563,188.61	\$7,216,968.77	\$697,497.72	\$14,477,655.10
-----------------------	-----------------------	---------------------	------------------------

General Fund (10)	Elementary	Secondary	Federal	Total
1190 Federally-Funded Regular Programs				
100 Personnel Services – Salaries				
100 Personnel Services – Salaries	698,077.62			698,077.62
Total Personnel Services – Salaries	\$698,077.62			\$698,077.62
200 Personnel Services – Employee Benefits				
210 Group Insurance – Contracted Provider	243,181.39			243,181.39
220 Social Security Contributions	46,901.50			46,901.50
230 PSERS Retirement Contributions	214,566.87			214,566.87
Total Personnel Services – Employee Benefits	\$504,649.76			\$504,649.76
300 Purchased Professional and Technical Services				
322 Professional Educational Services – Ius	16,390.00			16,390.00
329 Professional Educational Services – Other	69,368.31			69,368.31
Total Purchased Professional and Technical Services	\$85,758.31			\$85,758.31
600 Supplies				
610 General Supplies	30,262.44			30,262.44
640 Books and Periodicals	63,860.73			63,860.73
650 Supplies & Fees – Technology Related	82,605.39			82,605.39
Total Supplies	\$176,728.56			\$176,728.56
Total 1190 Federally-Funded Regular Programs	\$1,465,214.25			\$1,465,214.25

General Fund (10)

1200 Special Programs – Elementary / Secondary

100 Personnel Services – Salaries

	Elementary	Secondary	Federal	Total
100 Personnel Services – Salaries	1,578,077.50	1,211,067.04	49,649.18	2,838,793.72
Total Personnel Services – Salaries	\$1,578,077.50	\$1,211,067.04	\$49,649.18	\$2,838,793.72

200 Personnel Services – Employee Benefits

210 Group Insurance – Contracted Provider	479,419.36	317,961.01	19,765.75	817,146.12
220 Social Security Contributions	119,008.05	90,347.87	3,712.83	213,068.75
230 PSERS Retirement Contributions	551,231.42	420,725.63	17,350.58	989,307.63
250 Unemployment Compensation	4,601.12	4,601.11		9,202.23
270 Group Insurance – Self-Insurance	2,817.73	(2,129.98)		687.75
280 Other Post-Employment Benefits (OPEB)	18,450.00	18,450.00		36,900.00
Total Personnel Services – Employee Benefits	\$1,175,527.68	\$849,955.64	\$40,829.16	\$2,066,312.48

300 Purchased Professional and Technical Services

322 Professional Educational Services – Ius	554,501.52	329,098.54	447,760.00	1,331,360.06
330 Other Professional Services	79,313.32	57,684.44		136,997.76
Total Purchased Professional and Technical Services	\$633,814.84	\$386,782.98	\$447,760.00	\$1,468,357.82

500 Other Purchased Services

561 Tuition To Other School Districts Within the State	142,750.78	144,641.40		287,392.18
562 Tuition To Pennsylvania Charter Schools	766,902.70	1,115,081.45		1,881,984.15
569 Tuition – Other	9,458.61	41,422.14		50,880.75
594 IU Payment By Withholding for Institutionalized Children's Programs – Special Classes	166.40	166.39		332.79
Total Other Purchased Services	\$919,278.49	\$1,301,311.38		\$2,220,599.87

600 Supplies

610 General Supplies	5,453.77	2,618.76		8,072.53
640 Books and Periodicals	7,370.56	2,980.35		10,350.91
650 Supplies & Fees – Technology Related	2,692.84	6,375.74		9,068.58
Total Supplies	\$15,517.17	\$11,974.85		\$27,492.02

800 Other Objects

810 Dues and Fees	1,017.00	253.00		1,270.00
Total Other Objects	\$1,017.00	\$253.00		\$1,270.00

Total 1200 Special Programs – Elementary / Secondary

	\$4,323,232.68	\$3,761,344.89	\$538,238.34	\$8,622,815.91
--	-----------------------	-----------------------	---------------------	-----------------------

General Fund (10)

1210 Life Skills Support

100 Personnel Services – Salaries

100 Personnel Services – Salaries	151,020.73	271,512.88		422,533.61
Total Personnel Services – Salaries	\$151,020.73	\$271,512.88		\$422,533.61

200 Personnel Services – Employee Benefits

210 Group Insurance – Contracted Provider	30,105.51	23,433.27		53,538.78
220 Social Security Contributions	11,489.38	20,632.11		32,121.49
230 PSERS Retirement Contributions	52,766.65	94,683.51		147,450.16
270 Group Insurance – Self-Insurance	7,331.66	88.74		7,420.40
Total Personnel Services – Employee Benefits	\$101,693.20	\$138,837.63		\$240,530.83

600 Supplies

610 General Supplies	524.79	1,541.19		2,065.98
650 Supplies & Fees – Technology Related	59.00	478.00		537.00
Total Supplies	\$583.79	\$2,019.19		\$2,602.98

Total 1210 Life Skills Support

	\$253,297.72	\$412,369.70		\$665,667.42
--	---------------------	---------------------	--	---------------------

General Fund (10)

1220 Sensory Support

100 Personnel Services – Salaries

	Elementary	Secondary	Federal	Total
100 Personnel Services – Salaries	190,961.32	71,241.68		262,203.00
Total Personnel Services – Salaries	\$190,961.32	\$71,241.68		\$262,203.00

200 Personnel Services – Employee Benefits

210 Group Insurance – Contracted Provider	55,951.07	19,503.18		75,454.25
220 Social Security Contributions	14,391.51	5,397.83		19,789.34
230 PSERS Retirement Contributions	66,472.37	24,891.83		91,364.20
280 Other Post-Employment Benefits (OPEB)	1,600.00	1,600.00		3,200.00
Total Personnel Services – Employee Benefits	\$138,414.95	\$51,392.84		\$189,807.79

500 Other Purchased Services

561 Tuition To Other School Districts Within the State	76,407.06			76,407.06
Total Other Purchased Services	\$76,407.06			\$76,407.06

600 Supplies

610 General Supplies	1,252.40			1,252.40
640 Books and Periodicals	1,408.00	799.15		2,207.15
Total Supplies	\$2,660.40	\$799.15		\$3,459.55

800 Other Objects

810 Dues and Fees	1,017.00	253.00		1,270.00
Total Other Objects	\$1,017.00	\$253.00		\$1,270.00
Total 1220 Sensory Support	\$409,460.73	\$123,686.67		\$533,147.40

General Fund (10)

1230 Emotional Support

100 Personnel Services – Salaries

	<u>Elementary</u>	<u>Secondary</u>	<u>Federal</u>	<u>Total</u>
100 Personnel Services – Salaries	407,128.73	167,759.58		574,888.31
Total Personnel Services – Salaries	\$407,128.73	\$167,759.58		\$574,888.31

200 Personnel Services – Employee Benefits

210 Group Insurance – Contracted Provider	123,959.72	34,466.80		158,426.52
220 Social Security Contributions	30,818.18	12,671.60		43,489.78
230 PSERS Retirement Contributions	141,617.19	58,464.87		200,082.06
270 Group Insurance – Self-Insurance	(4,762.59)	(2,578.57)		(7,341.16)
Total Personnel Services – Employee Benefits	\$291,632.50	\$103,024.70		\$394,657.20

300 Purchased Professional and Technical Services

330 Other Professional Services	1,654.98	1,579.99		3,234.97
Total Purchased Professional and Technical Services	\$1,654.98	\$1,579.99		\$3,234.97

500 Other Purchased Services

561 Tuition To Other School Districts Within the State	59,717.72	14,757.15		74,474.87
Total Other Purchased Services	\$59,717.72	\$14,757.15		\$74,474.87

600 Supplies

610 General Supplies	2,416.22	1,052.34		3,468.56
Total Supplies	\$2,416.22	\$1,052.34		\$3,468.56

Total 1230 Emotional Support

Total 1230 Emotional Support	\$762,550.15	\$288,173.76		\$1,050,723.91
-------------------------------------	---------------------	---------------------	--	-----------------------

General Fund (10)

1240 Academic Support

100 Personnel Services – Salaries

	Elementary	Secondary	Federal	Total
100 Personnel Services – Salaries	774,736.34	663,945.57	49,649.18	1,488,331.09
Total Personnel Services – Salaries	\$774,736.34	\$663,945.57	\$49,649.18	\$1,488,331.09

200 Personnel Services – Employee Benefits

210 Group Insurance – Contracted Provider	246,062.46	227,482.63	19,765.75	493,310.84
220 Social Security Contributions	58,230.40	49,025.21	3,712.83	110,968.44
230 PSERS Retirement Contributions	270,465.84	228,888.36	17,350.58	516,704.78
270 Group Insurance – Self-Insurance	248.66	359.85		608.51
280 Other Post-Employment Benefits (OPEB)	10,350.00	10,350.00		20,700.00
Total Personnel Services – Employee Benefits	\$585,357.36	\$516,106.05	\$40,829.16	\$1,142,292.57

300 Purchased Professional and Technical Services

330 Other Professional Services	712.50	712.50		1,425.00
Total Purchased Professional and Technical Services	\$712.50	\$712.50		\$1,425.00

500 Other Purchased Services

561 Tuition To Other School Districts Within the State	6,626.00	6,626.02		13,252.02
562 Tuition To Pennsylvania Charter Schools	766,902.70	1,115,081.45		1,881,984.15
Total Other Purchased Services	\$773,528.70	\$1,121,707.47		\$1,895,236.17

600 Supplies

610 General Supplies	1,260.36	25.23		1,285.59
640 Books and Periodicals	5,962.56	2,181.20		8,143.76
650 Supplies & Fees – Technology Related	2,633.84	5,897.74		8,531.58
Total Supplies	\$9,856.76	\$8,104.17		\$17,960.93

Total 1240 Academic Support

Total 1240 Academic Support	\$2,144,191.66	\$2,310,575.76	\$90,478.34	\$4,545,245.76
------------------------------------	-----------------------	-----------------------	--------------------	-----------------------

General Fund (10)

1241 Learning Support – Public

100 Personnel Services – Salaries

100 Personnel Services – Salaries

Total Personnel Services – Salaries	764,254.56	640,724.85	49,649.18	1,454,628.59
--------------------------------------------	-------------------	-------------------	------------------	---------------------

200 Personnel Services – Employee Benefits

210 Group Insurance – Contracted Provider
 220 Social Security Contributions
 230 PSERS Retirement Contributions
 270 Group Insurance – Self-Insurance
 280 Other Post-Employment Benefits (OPEB)

Total Personnel Services – Employee Benefits	240,808.84	221,164.87	19,765.75	481,739.46
	57,178.77	47,589.16	3,712.83	108,480.76
	265,496.74	222,157.23	17,350.58	505,004.55
	248.66	359.85		608.51
	10,350.00	10,350.00		20,700.00

300 Purchased Professional and Technical Services

330 Other Professional Services

Total Purchased Professional and Technical Services	712.50	712.50		1,425.00
------------------------------------------------------------	---------------	---------------	--	-----------------

500 Other Purchased Services

561 Tuition To Other School Districts Within the State
 562 Tuition To Pennsylvania Charter Schools

Total Other Purchased Services	6,626.00	6,626.02		13,252.02
	766,902.70	1,115,081.45		1,881,984.15

600 Supplies

610 General Supplies
 640 Books and Periodicals
 650 Supplies & Fees – Technology Related

Total Supplies	1,260.36	25.23		1,285.59
	5,962.56	2,181.20		8,143.76
	2,633.84	5,897.74		8,531.58

Total 1241 Learning Support – Public

	\$2,122,435.53	\$2,272,870.10	\$90,478.34	\$4,485,783.97
--	-----------------------	-----------------------	--------------------	-----------------------

General Fund (10)

1243 Gifted Support

100 Personnel Services – Salaries

100 Personnel Services – Salaries	10,481.78	23,220.72		33,702.50
Total Personnel Services – Salaries	\$10,481.78	\$23,220.72		\$33,702.50

200 Personnel Services – Employee Benefits

210 Group Insurance – Contracted Provider	5,253.62	6,317.76		11,571.38
220 Social Security Contributions	1,051.63	1,436.05		2,487.68
230 PSERS Retirement Contributions	4,969.10	6,731.13		11,700.23

Total Personnel Services – Employee Benefits

Total Personnel Services – Employee Benefits	\$11,274.35	\$14,484.94		\$25,759.29
Total 1243 Gifted Support	\$21,756.13	\$37,705.66		\$59,461.79

General Fund (10)

1280 Early Intervention Support

300 Purchased Professional and Technical Services

322 Professional Educational Services – lus

Total Purchased Professional and Technical Services

Total 1280 Early Intervention Support

	<u>Elementary</u>	<u>Secondary</u>	<u>Federal</u>	<u>Total</u>
	3,819.50			3,819.50
	\$3,819.50			\$3,819.50
	\$3,819.50			\$3,819.50

General Fund (10)

1290 Special Programs - Other Support

100 Personnel Services - Salaries

	Elementary	Secondary	Federal	Total
100 Personnel Services - Salaries	54,230.38	36,607.33		90,837.71
Total Personnel Services - Salaries	\$54,230.38	\$36,607.33		\$90,837.71

200 Personnel Services - Employee Benefits

210 Group Insurance - Contracted Provider	23,340.60	13,075.13		36,415.73
220 Social Security Contributions	4,078.58	2,621.12		6,699.70
230 PSERS Retirement Contributions	19,909.37	13,797.06		33,706.43
250 Unemployment Compensation	4,601.12	4,601.11		9,202.23
280 Other Post-Employment Benefits (OPEB)	6,500.00	6,500.00		13,000.00
Total Personnel Services - Employee Benefits	\$58,429.67	\$40,594.42		\$99,024.09

300 Purchased Professional and Technical Services

322 Professional Educational Services - Ius	550,682.02	329,098.54	447,760.00	1,327,540.56
330 Other Professional Services	76,945.84	55,391.95		132,337.79
Total Purchased Professional and Technical Services	\$627,627.86	\$384,490.49	\$447,760.00	\$1,459,878.35

500 Other Purchased Services

561 Tuition To Other School Districts Within the State		123,258.23		123,258.23
569 Tuition - Other	9,458.61	41,422.14		50,880.75
594 IU Payment By Withholding for Institutionalized Children's Programs - Special Classes	166.40	166.39		332.79
Total Other Purchased Services	\$9,625.01	\$164,846.76		\$174,471.77

Total 1290 Special Programs - Other Support

Total 1290 Special Programs - Other Support	\$749,912.92	\$626,539.00	\$447,760.00	\$1,824,211.92
----------------------------------------------------	---------------------	---------------------	---------------------	-----------------------

General Fund (10)

1300 Vocational Education

100 Personnel Services – Salaries

100 Personnel Services – Salaries

Total Personnel Services – Salaries 189,113.12 **\$189,113.12** 189,113.12 **\$189,113.12**

200 Personnel Services – Employee Benefits

210 Group Insurance – Contracted Provider

220 Social Security Contributions

230 PSERS Retirement Contributions

270 Group Insurance – Self-Insurance

280 Other Post-Employment Benefits (OPEB)

Total Personnel Services – Employee Benefits 44,555.09 44,555.09 44,555.09 44,555.09
 14,335.35 14,335.35 14,335.35 14,335.35
 66,076.40 66,076.40 66,076.40 66,076.40
 (1,623.15) (1,623.15) (1,623.15) (1,623.15)
 7,000.00 7,000.00 7,000.00 7,000.00
\$130,343.69 **\$130,343.69** 765,964.89 765,964.89
\$765,964.89 **\$765,964.89**

500 Other Purchased Services

564 Tuition To Career and Technology Centers

Total Other Purchased Services 765,964.89 **\$765,964.89** 765,964.89 **\$765,964.89**

600 Supplies

610 General Supplies

640 Books and Periodicals

Total Supplies 592.25 592.25 592.25 592.25
 5,450.90 5,450.90 5,450.90 5,450.90
\$6,043.15 **\$6,043.15** **\$6,043.15** **\$6,043.15**

Total 1300 Vocational Education

\$1,091,464.85 **\$1,091,464.85** **\$1,091,464.85** **\$1,091,464.85**

General Fund (10)	Elementary	Secondary	Federal	Total
1400 Other Instructional Programs – Elementary / Secondary				
100 Personnel Services – Salaries				
100 Personnel Services – Salaries	46,253.50	66,052.79	10,352.00	122,658.29
Total Personnel Services – Salaries	\$46,253.50	\$66,052.79	\$10,352.00	\$122,658.29
200 Personnel Services – Employee Benefits				
210 Group Insurance – Contracted Provider	18,409.94	36,226.17		54,636.11
220 Social Security Contributions	3,434.09	4,817.58	780.82	9,032.49
230 PSERS Retirement Contributions	15,898.93	22,423.67	3,612.66	41,935.26
Total Personnel Services – Employee Benefits	\$37,742.96	\$63,467.42	\$4,393.48	\$105,603.86
300 Purchased Professional and Technical Services				
322 Professional Educational Services – lus	7,140.00	49,654.00		56,794.00
Total Purchased Professional and Technical Services	\$7,140.00	\$49,654.00		\$56,794.00
500 Other Purchased Services				
561 Tuition To Other School Districts Within the State	79,157.59	129,764.36		208,921.95
569 Tuition – Other	1,386.00	23,129.05		24,515.05
Total Other Purchased Services	\$80,543.59	\$152,893.41		\$233,437.00
Total 1400 Other Instructional Programs – Elementary / Secondary	\$171,680.05	\$332,067.62	\$14,745.48	\$518,493.15

	Elementary	Secondary	Federal	Total
General Fund (10)				
1420 Summer School				
100 Personnel Services – Salaries				
100 Personnel Services – Salaries			10,352.00	10,352.00
Total Personnel Services – Salaries			\$10,352.00	\$10,352.00
200 Personnel Services – Employee Benefits				
220 Social Security Contributions			780.82	780.82
230 PSERS Retirement Contributions			3,612.66	3,612.66
Total Personnel Services – Employee Benefits			\$4,393.48	\$4,393.48
Total 1420 Summer School			\$14,745.48	\$14,745.48

General Fund (10)

1440 Alternative Regular Education Programs

100 Personnel Services – Salaries

100 Personnel Services – Salaries

	Elementary	Secondary	Federal	Total
	35,503.50	35,503.50		71,007.00
Total Personnel Services – Salaries	\$35,503.50	\$35,503.50		\$71,007.00

200 Personnel Services – Employee Benefits

210 Group Insurance – Contracted Provider
 220 Social Security Contributions
 230 PSERS Retirement Contributions

	12,823.06	12,823.04		25,646.10
	2,681.14	2,681.13		5,362.27
	12,404.97	12,404.97		24,809.94
Total Personnel Services – Employee Benefits	\$27,909.17	\$27,909.14		\$55,818.31

300 Purchased Professional and Technical Services

322 Professional Educational Services – lus

	7,140.00	49,654.00		56,794.00
Total Purchased Professional and Technical Services	\$7,140.00	\$49,654.00		\$56,794.00

500 Other Purchased Services

561 Tuition To Other School Districts Within the State
 569 Tuition – Other

	79,157.59	129,764.36		208,921.95
	1,386.00	23,129.05		24,515.05
Total Other Purchased Services	\$80,543.59	\$152,893.41		\$233,437.00

Total 1440 Alternative Regular Education Programs

	\$151,096.26	\$265,960.05		\$417,056.31
--	---------------------	---------------------	--	---------------------

General Fund (10)

1441 Adjudicated / Court-Placed Programs

100 Personnel Services – Salaries

	<u>Elementary</u>	<u>Secondary</u>	<u>Federal</u>	<u>Total</u>
100 Personnel Services – Salaries	35,503.50	35,503.50		71,007.00
Total Personnel Services – Salaries	\$35,503.50	\$35,503.50		\$71,007.00

200 Personnel Services – Employee Benefits

210 Group Insurance – Contracted Provider	12,823.06	12,823.04		25,646.10
220 Social Security Contributions	2,681.14	2,681.13		5,362.27
230 PSERS Retirement Contributions	12,404.97	12,404.97		24,809.94
Total Personnel Services – Employee Benefits	\$27,909.17	\$27,909.14		\$55,818.31

500 Other Purchased Services

561 Tuition To Other School Districts Within the State	79,157.59	129,764.36		208,921.95
--------------------------------------------------------	-----------	------------	--	------------

Total Other Purchased Services

Total Other Purchased Services	\$79,157.59	\$129,764.36		\$208,921.95
---------------------------------------	--------------------	---------------------	--	---------------------

Total 1441 Adjudicated / Court-Placed Programs

Total 1441 Adjudicated / Court-Placed Programs	\$142,570.26	\$193,177.00		\$335,747.26
-------------------------------------------------------	---------------------	---------------------	--	---------------------

General Fund (10)	Elementary	Secondary	Federal	Total
1442 Alternative Education Programs				
300 <u>Purchased Professional and Technical Services</u>				
322 Professional Educational Services – Ius	7,140.00	49,654.00		56,794.00
Total Purchased Professional and Technical Services	\$7,140.00	\$49,654.00		\$56,794.00
500 <u>Other Purchased Services</u>				
569 Tuition – Other	1,386.00	23,129.05		24,515.05
Total Other Purchased Services	\$1,386.00	\$23,129.05		\$24,515.05
Total 1442 Alternative Education Programs	\$8,526.00	\$72,783.05		\$81,309.05

General Fund (10)

1490 Additional Other Instructional Programs

100 Personnel Services – Salaries

	<u>Elementary</u>	<u>Secondary</u>	<u>Federal</u>	<u>Total</u>
100 Personnel Services – Salaries	10,750.00	30,549.29		41,299.29
Total Personnel Services – Salaries	\$10,750.00	\$30,549.29		\$41,299.29

200 Personnel Services – Employee Benefits

210 Group Insurance – Contracted Provider	5,586.88	23,403.13		28,990.01
220 Social Security Contributions	752.95	2,136.45		2,889.40
230 PSERS Retirement Contributions	3,493.96	10,018.70		13,512.66
Total Personnel Services – Employee Benefits	\$9,833.79	\$35,558.28		\$45,392.07

Total 1490 Additional Other Instructional Programs

	\$20,583.79	\$66,107.57		\$86,691.36
--	--------------------	--------------------	--	--------------------

General Fund (10)

1500 Nonpublic School Programs

300 Purchased Professional and Technical Services

322 Professional Educational Services – Ius

323 Professional Educational Services – Other Educational Agencies

Total Purchased Professional and Technical Services

600 Supplies

610 General Supplies

Total Supplies

Total 1500 Nonpublic School Programs

	<u>Elementary</u>	<u>Secondary</u>	<u>Federal</u>	<u>Total</u>
			28,074.25	28,074.25
			5,165.00	5,165.00
			\$33,239.25	\$33,239.25
			1,000.00	1,000.00
			\$1,000.00	\$1,000.00
			\$34,239.25	\$34,239.25

General Fund (10)

2000 Support Services

100 Personnel Services – Salaries

100 Personnel Services – Salaries

4,188,285.42
\$4,188,285.42

Total

200 Personnel Services – Employee Benefits

210 Group Insurance – Contracted Provider
 220 Social Security Contributions
 230 PSERS Retirement Contributions
 240 Tuition Reimbursement
 260 Workers' Compensation
 270 Group Insurance – Self-Insurance
 280 Other Post-Employment Benefits (OPEB)
 291 Other Retirement Plans
 292 Health Savings Accounts

1,341,535.48
 307,123.99
 1,400,623.60
 115,418.22
 22,194.79
 5,096.35
 76,299.44
 11,491.62
 136,845.00
\$3,416,628.49

Total Personnel Services – Employee Benefits

300 Purchased Professional and Technical Services

322 Professional Educational Services – Ius
 323 Professional Educational Services – Other Educational Agencies
 329 Professional Educational Services – Other
 330 Other Professional Services
 340 Technical Services
 350 Security / Safety Services
 360 Employee Training and Development Services

2,369.30
 417.38
 43,903.12
 428,625.71
 38,794.19
 12,364.31
 14,387.39
\$540,861.40

Total Purchased Professional and Technical Services

400 Purchased Property Services

410 Cleaning Services
 420 Utility Services
 430 Repairs and Maintenance Services
 440 Rentals
 450 Construction Services
 460 Extermination Services

21,194.31
 128,400.93
 305,031.86
 81,681.76
 4,500.00
 14,622.10
\$555,430.96

Total Purchased Property Services

500 Other Purchased Services

516 Student Transportation Services From the IU
 520 Insurance – General
 521 Fire Insurance
 522 Automotive Liability Insurance
 523 General Property and Liability Insurance
 530 Communications
 549 Other Advertising/Public Relations
 550 Printing and Binding
 580 Travel

42,033.34
 4,436.00
 79.30
 11,952.00
 132,556.91
 253,743.56
 13,828.18
 13,408.54
 451.03
\$472,488.86

Total Other Purchased Services

600 Supplies

610 General Supplies

318,680.77

	<u>Total</u>
General Fund (10)	
2000 Support Services	
600 Supplies	
620 Energy	702,573.54
630 Food	3,002.32
640 Books and Periodicals	3,920.30
650 Supplies & Fees – Technology Related	298,255.33
Total Supplies	\$1,326,432.26
700 Property	
762 Capitalized Equipment - Replacement	815,700.00
766 Capitalized Technology Equipment – Replacement	103,908.94
768 Capitalized Technology Software - Replacement	41,774.04
Total Property	\$961,382.98
800 Other Objects	
810 Dues and Fees	32,058.64
890 Miscellaneous Expenditures	19,580.51
Total Other Objects	\$51,639.15
Total 2000 Support Services	\$11,513,149.52

General Fund (10)

2100 Support Services – Students

100 Personnel Services – Salaries

	<u>Elementary</u>	<u>Secondary</u>	<u>Federal</u>	<u>Total</u>
100 Personnel Services – Salaries	121,245.20	293,622.53	81,995.45	684,701.20
Total Personnel Services – Salaries	\$121,245.20	\$293,622.53	\$81,995.45	\$684,701.20

200 Personnel Services – Employee Benefits

210 Group Insurance – Contracted Provider	26,696.56	100,809.06	17,928.40	218,623.89
220 Social Security Contributions	9,034.65	22,037.23	6,048.83	50,758.54
230 PSERS Retirement Contributions	40,104.74	100,495.28	28,649.31	231,088.85
270 Group Insurance – Self-Insurance	5,495.52	5,495.52		10,991.04
280 Other Post-Employment Benefits (OPEB)	6,500.00	6,500.00		22,000.00
Total Personnel Services – Employee Benefits	\$87,831.47	\$235,337.09	\$52,626.54	\$533,462.32

300 Purchased Professional and Technical Services

323 Professional Educational Services – Other Educational Agencies				417.38
329 Professional Educational Services – Other			7,000.00	7,000.00
330 Other Professional Services	12,277.25	12,277.25	14,500.00	39,054.50
Total Purchased Professional and Technical Services	\$12,277.25	\$12,277.25	\$21,500.00	\$46,471.88

500 Other Purchased Services

550 Printing and Binding				986.34
Total Other Purchased Services				\$986.34

600 Supplies

610 General Supplies	477.44	295.31	2,736.50	3,841.69
640 Books and Periodicals	919.59	80.19		999.78
650 Supplies & Fees – Technology Related	1,980.09	548.20		2,528.29
Total Supplies	\$3,377.12	\$923.70	\$2,736.50	\$7,369.76

800 Other Objects

810 Dues and Fees				270.00
-------------------	--	--	--	--------

Total Other Objects

Total 2100 Support Services – Students	\$224,731.04	\$542,160.57	\$158,858.49	\$1,273,261.50
-----------------------------------------------	---------------------	---------------------	---------------------	-----------------------

	<u>Elementary</u>	<u>Secondary</u>	<u>Federal</u>	<u>Total</u>
General Fund (10)				
2120 Guidance Services				
100 Personnel Services – Salaries				
100 Personnel Services – Salaries	33,646.28	251,136.26	40,165.93	324,948.47
Total Personnel Services – Salaries	\$33,646.28	\$251,136.26	\$40,165.93	\$324,948.47
200 Personnel Services – Employee Benefits				
210 Group Insurance – Contracted Provider	17,713.47	89,519.60		107,233.07
220 Social Security Contributions	2,499.22	18,988.31	2,996.03	24,483.56
230 PSERS Retirement Contributions	11,506.62	86,000.09	14,033.97	111,540.68
270 Group Insurance – Self-Insurance	5,495.52	5,495.52		10,991.04
280 Other Post-Employment Benefits (OPEB)	3,500.00	3,500.00		7,000.00
Total Personnel Services – Employee Benefits	\$40,714.83	\$203,503.52	\$17,030.00	\$261,248.35
300 Purchased Professional and Technical Services				
329 Professional Educational Services – Other			7,000.00	7,000.00
330 Other Professional Services	922.25	922.25		1,844.50
Total Purchased Professional and Technical Services	\$922.25	\$922.25	\$7,000.00	\$8,844.50
600 Supplies				
610 General Supplies			2,736.50	2,736.50
Total Supplies	\$75,283.36	\$455,562.03	\$2,736.50	\$2,736.50
Total 2120 Guidance Services	\$75,283.36	\$455,562.03	\$66,932.43	\$597,777.82

General Fund (10)

2140 Psychological Services

100 Personnel Services – Salaries

	<u>Elementary</u>	<u>Secondary</u>	<u>Federal</u>	<u>Total</u>
100 Personnel Services – Salaries	87,598.92	35,148.93		122,747.85
Total Personnel Services – Salaries	\$87,598.92	\$35,148.93		\$122,747.85

200 Personnel Services – Employee Benefits

210 Group Insurance – Contracted Provider	8,983.09	8,911.09		17,894.18
220 Social Security Contributions	6,535.43	2,505.70		9,041.13
230 PSERS Retirement Contributions	28,598.12	12,018.95		40,617.07
280 Other Post-Employment Benefits (OPEB)	3,000.00	3,000.00		6,000.00
Total Personnel Services – Employee Benefits	\$47,116.64	\$26,435.74		\$73,552.38

300 Purchased Professional and Technical Services

330 Other Professional Services	11,355.00	11,355.00		22,710.00
Total Purchased Professional and Technical Services	\$11,355.00	\$11,355.00		\$22,710.00

600 Supplies

610 General Supplies	477.44	295.31		772.75
640 Books and Periodicals	919.59	80.19		999.78
650 Supplies & Fees – Technology Related	1,980.09	548.20		2,528.29
Total Supplies	\$3,377.12	\$923.70		\$4,300.82

Total 2140 Psychological Services

Total 2140 Psychological Services	\$149,447.68	\$73,863.37		\$223,311.05
------------------------------------------	---------------------	--------------------	--	---------------------

General Fund (10)	Elementary	Secondary	Federal	Total
2160 Social Work Services				
100 Personnel Services – Salaries				
100 Personnel Services – Salaries			41,829.52	161,507.44
Total Personnel Services – Salaries			\$41,829.52	\$161,507.44
200 Personnel Services – Employee Benefits				
210 Group Insurance – Contracted Provider			17,928.40	41,755.30
220 Social Security Contributions			3,052.80	11,672.13
230 PSERS Retirement Contributions			14,615.34	53,111.38
Total Personnel Services – Employee Benefits			\$35,596.54	\$106,538.81
300 Purchased Professional and Technical Services				
323 Professional Educational Services – Other Educational Agencies				417.38
330 Other Professional Services			14,500.00	14,500.00
Total Purchased Professional and Technical Services			\$14,500.00	\$14,917.38
800 Other Objects				
810 Dues and Fees				270.00
Total Other Objects				\$270.00
Total 2160 Social Work Services			\$91,926.06	\$283,233.63

	Elementary	Secondary	Federal	Total
General Fund (10)				
2170 Student Accounting Services				
100 Personnel Services – Salaries				
100 Personnel Services – Salaries	68,160.10			\$68,160.10
200 Personnel Services – Employee Benefits				
210 Group Insurance – Contracted Provider	49,362.97			49,362.97
220 Social Security Contributions	5,018.50			5,018.50
230 PSERS Retirement Contributions	23,343.48			23,343.48
280 Other Post-Employment Benefits (OPEB)	9,000.00			9,000.00
Total Personnel Services – Employee Benefits	\$86,724.95			\$86,724.95
500 Other Purchased Services				
550 Printing and Binding			986.34	986.34
Total Other Purchased Services			\$986.34	\$986.34
600 Supplies				
610 General Supplies			332.44	332.44
Total Supplies			\$332.44	\$332.44
Total 2170 Student Accounting Services				\$156,203.83

General Fund (10)	Elementary	Secondary	Federal	Total
2190 Other Student Services				
100 Personnel Services – Salaries				
100 Personnel Services – Salaries	7,337.34			7,337.34
Total Personnel Services – Salaries	\$7,337.34			\$7,337.34
200 Personnel Services – Employee Benefits				
210 Group Insurance – Contracted Provider	2,378.37			2,378.37
220 Social Security Contributions	543.22			543.22
230 PSERS Retirement Contributions	2,476.24			2,476.24
Total Personnel Services – Employee Benefits	\$5,397.83			\$5,397.83
Total 2190 Other Student Services	\$12,735.17			\$12,735.17

	<u>Elementary</u>	<u>Secondary</u>	<u>Federal</u>	<u>Total</u>
General Fund (10)				
2200 Support Services – Instructional Staff				
100 Personnel Services – Salaries				
100 Personnel Services – Salaries	170,635.89	169,905.49	44,042.96	384,584.34
Total Personnel Services – Salaries	\$170,635.89	\$169,905.49	\$44,042.96	\$384,584.34
200 Personnel Services – Employee Benefits				
210 Group Insurance – Contracted Provider	54,178.39	36,846.07	73.98	91,098.44
220 Social Security Contributions	12,545.94	12,665.78	3,338.99	28,550.71
230 PSERS Retirement Contributions	58,991.27	58,107.26	15,388.72	132,487.25
240 Tuition Reimbursement	58,738.12	56,680.10		115,418.22
270 Group Insurance – Self-Insurance	2,628.08	(3,252.76)		(624.68)
Total Personnel Services – Employee Benefits	\$187,081.80	\$161,046.45	\$18,801.69	\$366,929.94
300 Purchased Professional and Technical Services				
322 Professional Educational Services – Ius			2,369.30	2,369.30
329 Professional Educational Services – Other			9,715.62	9,715.62
330 Other Professional Services	7,087.50	7,087.50		14,175.00
360 Employee Training and Development Services	1,060.00	1,060.00	12,217.39	14,337.39
Total Purchased Professional and Technical Services	\$8,147.50	\$8,147.50	\$24,302.31	\$40,597.31
500 Other Purchased Services				
580 Travel	119.28	119.28		238.56
Total Other Purchased Services	\$119.28	\$119.28		\$238.56
600 Supplies				
610 General Supplies	822.18	1,002.15	991.45	2,815.78
640 Books and Periodicals	1,345.76	1,345.76		2,691.52
650 Supplies & Fees – Technology Related	5,349.73	11,474.81		16,824.54
Total Supplies	\$7,517.67	\$13,822.72	\$991.45	\$22,331.84
800 Other Objects				
810 Dues and Fees	472.50	472.50		945.00
890 Miscellaneous Expenditures	11,757.00			11,757.00
Total Other Objects	\$12,229.50	\$472.50		\$12,702.00
Total 2200 Support Services – Instructional Staff	\$385,731.64	\$353,513.94	\$88,138.41	\$827,383.99

General Fund (10)

2250 School Library Services

100 Personnel Services – Salaries

100 Personnel Services – Salaries

	Elementary	Secondary	Federal	Total
	16,157.73	6,371.55		22,529.28
Total Personnel Services – Salaries	\$16,157.73	\$6,371.55		\$22,529.28

200 Personnel Services – Employee Benefits

210 Group Insurance – Contracted Provider

220 Social Security Contributions

230 PSERS Retirement Contributions

270 Group Insurance – Self-Insurance

	5,709.17	487.43		5,709.17
	1,236.14			1,723.57
	5,645.49	2,226.23		7,871.72
	2,940.42	(2,940.42)		
Total Personnel Services – Employee Benefits	\$15,531.22	(\$226.76)		\$15,304.46

600 Supplies

610 General Supplies

640 Books and Periodicals

650 Supplies & Fees – Technology Related

	349.44	529.42		878.86
	1,345.76	1,345.76		2,691.52
	3,399.73	9,524.81		12,924.54
Total Supplies	\$5,094.93	\$11,399.99		\$16,494.92

Total 2250 School Library Services

	\$36,783.88	\$17,544.78		\$54,328.66
--	--------------------	--------------------	--	--------------------

General Fund (10)

2260 Instruction and Curriculum Development Services

100 Personnel Services – Salaries

	<u>Elementary</u>	<u>Secondary</u>	<u>Federal</u>	<u>Total</u>
100 Personnel Services – Salaries	154,478.16	163,533.94	27,320.08	345,332.18
Total Personnel Services – Salaries	\$154,478.16	\$163,533.94	\$27,320.08	\$345,332.18

200 Personnel Services – Employee Benefits

210 Group Insurance – Contracted Provider	48,469.22	36,846.07	49.32	85,364.61
220 Social Security Contributions	11,309.80	12,178.35	2,079.00	25,567.15
230 PSERS Retirement Contributions	53,345.78	55,881.03	9,545.72	118,772.53
270 Group Insurance – Self-Insurance	(312.34)	(312.34)		(624.68)
Total Personnel Services – Employee Benefits	\$112,812.46	\$104,593.11	\$11,674.04	\$229,079.61

300 Purchased Professional and Technical Services

330 Other Professional Services	7,087.50	7,087.50		14,175.00
Total Purchased Professional and Technical Services	\$7,087.50	\$7,087.50		\$14,175.00

500 Other Purchased Services

580 Travel	119.28	119.28		238.56
Total Other Purchased Services	\$119.28	\$119.28		\$238.56

600 Supplies

610 General Supplies	472.74	472.73		945.47
650 Supplies & Fees – Technology Related	1,950.00	1,950.00		3,900.00
Total Supplies	\$2,422.74	\$2,422.73		\$4,845.47

800 Other Objects

810 Dues and Fees	472.50	472.50		945.00
890 Miscellaneous Expenditures	11,757.00			11,757.00
Total Other Objects	\$12,229.50	\$472.50		\$12,702.00

Total 2260 Instruction and Curriculum Development Services

	\$289,149.64	\$278,229.06	\$38,994.12	\$606,372.82
--	---------------------	---------------------	--------------------	---------------------

General Fund (10)

	<u>Elementary</u>	<u>Secondary</u>	<u>Federal</u>	<u>Total</u>
2270 Instructional Staff Professional Development Services				
100 <u>Personnel Services – Salaries</u>				
100 Personnel Services – Salaries			16,722.88	16,722.88
Total Personnel Services – Salaries			\$16,722.88	\$16,722.88
200 <u>Personnel Services – Employee Benefits</u>				
210 Group Insurance – Contracted Provider		24.66		24.66
220 Social Security Contributions		1,259.99		1,259.99
230 PSERS Retirement Contributions		5,843.00		5,843.00
240 Tuition Reimbursement	58,738.12	56,680.10		115,418.22
Total Personnel Services – Employee Benefits	\$58,738.12	\$56,680.10	\$7,127.65	\$122,545.87
300 <u>Purchased Professional and Technical Services</u>				
329 Professional Educational Services – Other			9,715.62	9,715.62
360 Employee Training and Development Services	1,060.00	1,060.00	12,217.39	14,337.39
Total Purchased Professional and Technical Services	\$1,060.00	\$1,060.00	\$21,933.01	\$24,053.01
600 <u>Supplies</u>				
610 General Supplies			991.45	991.45
Total Supplies			\$991.45	\$991.45
Total 2270 Instructional Staff Professional Development Services	\$59,798.12	\$57,740.10	\$46,774.99	\$164,313.21

General Fund (10)	Elementary	Secondary	Federal	Total
2280 Nonpublic Support Services				
300 <u>Purchased Professional and Technical Services</u>				
322 Professional Educational Services – Ius			2,369.30	2,369.30
Total Purchased Professional and Technical Services			\$2,369.30	\$2,369.30
Total 2280 Nonpublic Support Services			\$2,369.30	\$2,369.30

General Fund (10)

2300 Support Services – Administration

100 Personnel Services – Salaries

100 Personnel Services – Salaries

	Elementary	Secondary	Federal	Total
	276,305.98	303,151.34		962,887.05
Total Personnel Services – Salaries	\$276,305.98	\$303,151.34		\$962,887.05

200 Personnel Services – Employee Benefits

210 Group Insurance – Contracted Provider
 220 Social Security Contributions
 230 PSERS Retirement Contributions
 260 Workers' Compensation
 270 Group Insurance – Self-Insurance
 280 Other Post-Employment Benefits (OPEB)
 291 Other Retirement Plans
 292 Health Savings Accounts

	129,303.57	108,151.46		332,775.12
	20,266.12	22,406.56		69,185.58
	95,580.58	103,880.11		317,631.12
	2,755.20	3,061.31		7,653.28
	2,805.54	2,805.54		5,847.98
	4,750.00	4,750.00		37,499.44
				2,041.62
				136,845.00
Total Personnel Services – Employee Benefits	\$255,461.01	\$245,054.98		\$909,479.14

300 Purchased Professional and Technical Services

330 Other Professional Services

				277,596.89
Total Purchased Professional and Technical Services				\$277,596.89

400 Purchased Property Services

440 Rentals

	5,977.57			5,977.57
Total Purchased Property Services	\$5,977.57			\$5,977.57

500 Other Purchased Services

520 Insurance – General
 530 Communications
 549 Other Advertising/Public Relations
 550 Printing and Binding

				4,436.00
				712.80
				13,828.18
	87.50	1,302.31		7,321.24
Total Other Purchased Services	\$87.50	\$1,302.31		\$26,298.22

600 Supplies

610 General Supplies
 630 Food
 640 Books and Periodicals

	3,384.07	1,351.62	99.23	7,369.62
		1,255.30		3,002.32
				229.00
Total Supplies	\$3,384.07	\$2,606.92	\$99.23	\$10,600.94

800 Other Objects

810 Dues and Fees

	1,589.00	385.00		24,562.33
Total Other Objects	\$1,589.00	\$385.00		\$24,562.33

Total 2300 Support Services – Administration

	\$542,805.13	\$552,500.55	\$99.23	\$2,217,402.14
--	--------------	--------------	---------	----------------

General Fund (10)	Elementary	Secondary	Federal	Total
2310 Board Services				
100 Personnel Services – Salaries				
100 Personnel Services – Salaries				2,499.90
Total Personnel Services – Salaries				\$2,499.90
200 Personnel Services – Employee Benefits				
220 Social Security Contributions				187.07
230 PSERS Retirement Contributions				873.34
280 Other Post-Employment Benefits (OPEB)				24,049.40
292 Health Savings Accounts				136,845.00
Total Personnel Services – Employee Benefits				\$161,954.81
300 Purchased Professional and Technical Services				
330 Other Professional Services				30,258.88
Total Purchased Professional and Technical Services				\$30,258.88
500 Other Purchased Services				
520 Insurance – General				792.00
530 Communications				26.49
549 Other Advertising/Public Relations				13,383.83
Total Other Purchased Services				\$14,202.32
600 Supplies				
610 General Supplies				1,613.51
630 Food				259.52
Total Supplies				\$1,873.03
800 Other Objects				
810 Dues and Fees				21,468.33
Total Other Objects				\$21,468.33
Total 2310 Board Services				\$232,257.27

	<u>Elementary</u>	<u>Secondary</u>	<u>Federal</u>	<u>Total</u>
General Fund (10)				
2320 Board Treasurer Services				
500 <u>Other Purchased Services</u>				
520 Insurance – General	792.00			792.00
Total Other Purchased Services				\$792.00
Total 2320 Board Treasurer Services				\$792.00

	Elementary	Secondary	Federal	Total
General Fund (10)				
2330 Tax Assessment and Collection Services				
100 Personnel Services – Salaries				
100 Personnel Services – Salaries				12,672.00
Total Personnel Services – Salaries				\$12,672.00
200 Personnel Services – Employee Benefits				
220 Social Security Contributions				969.40
Total Personnel Services – Employee Benefits				\$969.40
300 Purchased Professional and Technical Services				
330 Other Professional Services				195,190.43
Total Purchased Professional and Technical Services				\$195,190.43
500 Other Purchased Services				
520 Insurance – General				2,852.00
530 Communications				686.31
550 Printing and Binding				3,625.33
Total Other Purchased Services				\$7,163.64
Total 2330 Tax Assessment and Collection Services				\$215,995.47

	<u>Elementary</u>	<u>Secondary</u>	<u>Federal</u>	<u>Total</u>
General Fund (10)				
2350 Legal and Accounting Services				
300 <u>Purchased Professional and Technical Services</u>				
330 Other Professional Services				52,147.58
Total Purchased Professional and Technical Services				\$52,147.58
Total 2350 Legal and Accounting Services				\$52,147.58

General Fund (10)

2360 Office of the Superintendent / Executive Director Services

100 Personnel Services – Salaries

	Elementary	Secondary	Federal	Total
100 Personnel Services – Salaries				240,537.83
Total Personnel Services – Salaries				\$240,537.83
200 Personnel Services – Employee Benefits				
210 Group Insurance – Contracted Provider				45,630.14
220 Social Security Contributions				15,755.21
230 PSERS Retirement Contributions				72,671.61
260 Workers' Compensation				1,836.77
270 Group Insurance – Self-Insurance				236.90
280 Other Post-Employment Benefits (OPEB)				3,950.04
291 Other Retirement Plans				2,041.62
Total Personnel Services – Employee Benefits				\$142,122.29

500 Other Purchased Services

549 Other Advertising/Public Relations				444.35
550 Printing and Binding				387.10
Total Other Purchased Services				\$831.45

600 Supplies

610 General Supplies				658.19
630 Food				1,487.50
640 Books and Periodicals				229.00
Total Supplies				\$2,374.69

800 Other Objects

810 Dues and Fees				1,120.00
Total Other Objects				\$1,120.00
Total 2360 Office of the Superintendent / Executive Director Services				\$386,986.26

General Fund (10)

2380 Office of the Principal Services

100 Personnel Services – Salaries

	Elementary	Secondary	Federal	Total
100 Personnel Services – Salaries	276,305.98	303,151.34		579,457.32
Total Personnel Services – Salaries	\$276,305.98	\$303,151.34		\$579,457.32

200 Personnel Services – Employee Benefits

210 Group Insurance – Contracted Provider	129,303.57	108,151.46		237,455.03
220 Social Security Contributions	20,266.12	22,406.56		42,672.68
230 PSERS Retirement Contributions	95,580.58	103,880.11		199,460.69
260 Workers' Compensation	2,755.20	3,061.31		5,816.51
270 Group Insurance – Self-Insurance	2,805.54	2,805.54		5,611.08
280 Other Post-Employment Benefits (OPEB)	4,750.00	4,750.00		9,500.00
Total Personnel Services – Employee Benefits	\$255,461.01	\$245,054.98		\$500,515.99

400 Purchased Property Services

440 Rentals	5,977.57			5,977.57
Total Purchased Property Services	\$5,977.57			\$5,977.57

500 Other Purchased Services

550 Printing and Binding	87.50	1,302.31		1,389.81
Total Other Purchased Services	\$87.50	\$1,302.31		\$1,389.81

600 Supplies

610 General Supplies	3,384.07	1,351.62	99.23	4,834.92
630 Food		1,255.30		1,255.30
Total Supplies	\$3,384.07	\$2,606.92	\$99.23	\$6,090.22

800 Other Objects

810 Dues and Fees	1,589.00	385.00		1,974.00
Total Other Objects	\$1,589.00	\$385.00		\$1,974.00

Total 2380 Office of the Principal Services

	\$542,805.13	\$552,500.55	\$99.23	\$1,095,404.91
--	---------------------	---------------------	----------------	-----------------------

	Elementary	Secondary	Federal	Total
General Fund (10)				
2390 Other Administration Services				
100 Personnel Services – Salaries				
100 Personnel Services – Salaries				127,720.00
Total Personnel Services – Salaries				\$127,720.00
200 Personnel Services – Employee Benefits				
210 Group Insurance – Contracted Provider				49,689.95
220 Social Security Contributions				9,601.22
230 PSERS Retirement Contributions				44,625.48
Total Personnel Services – Employee Benefits				\$103,916.65
500 Other Purchased Services				
550 Printing and Binding				1,919.00
Total Other Purchased Services				\$1,919.00
600 Supplies				
610 General Supplies				263.00
Total Supplies				\$263.00
Total 2390 Other Administration Services				\$233,818.65

General Fund (10)	Elementary	Secondary	Federal	Total
2400 Support Services – Pupil Health				
100 Personnel Services – Salaries				
100 Personnel Services – Salaries				225,652.81
Total Personnel Services – Salaries				\$225,652.81
200 Personnel Services – Employee Benefits				
210 Group Insurance – Contracted Provider				71,112.27
220 Social Security Contributions				16,636.62
230 PSERS Retirement Contributions				74,375.13
Total Personnel Services – Employee Benefits				\$162,124.02
300 Purchased Professional and Technical Services				
330 Other Professional Services				912.50
Total Purchased Professional and Technical Services				\$912.50
400 Purchased Property Services				
440 Rentals				3,245.00
Total Purchased Property Services				\$3,245.00
500 Other Purchased Services				
550 Printing and Binding				1,585.50
Total Other Purchased Services				\$1,585.50
600 Supplies				
610 General Supplies				1,214.58
Total Supplies				\$1,214.58
800 Other Objects				
890 Miscellaneous Expenditures				2,937.20
Total Other Objects				\$2,937.20
Total 2400 Support Services – Pupil Health				\$397,671.61

	Elementary	Secondary	Federal	Total
General Fund (10)				
2420 Medical Services				
300 <u>Purchased Professional and Technical Services</u>				
330 Other Professional Services				546.00
Total Purchased Professional and Technical Services				\$546.00
400 <u>Purchased Property Services</u>				
440 Rentals				3,245.00
Total Purchased Property Services				\$3,245.00
500 <u>Other Purchased Services</u>				
550 Printing and Binding				1,585.50
Total Other Purchased Services				\$1,585.50
600 <u>Supplies</u>				
610 General Supplies				700.45
Total Supplies				\$700.45
Total 2420 Medical Services				\$6,076.95

	Elementary	Secondary	Federal	Total
General Fund (10)				
2430 Dental Services				
300 <u>Purchased Professional and Technical Services</u>				
330 Other Professional Services				115.50
Total Purchased Professional and Technical Services				\$115.50
600 <u>Supplies</u>				
610 General Supplies				441.35
Total Supplies				\$441.35
Total 2430 Dental Services				\$556.85

	Elementary	Secondary	Federal	Total
General Fund (10)				
2440 Nursing Services				
100 Personnel Services – Salaries				225,652.81
100 Personnel Services – Salaries				\$225,652.81
200 Personnel Services – Employee Benefits				
210 Group Insurance – Contracted Provider				71,112.27
220 Social Security Contributions				16,636.62
230 PSERS Retirement Contributions				74,375.13
Total Personnel Services – Employee Benefits				\$162,124.02
600 Supplies				
610 General Supplies				72.78
Total Supplies				\$72.78
Total 2440 Nursing Services				\$387,849.61

	<u>Elementary</u>	<u>Secondary</u>	<u>Federal</u>	<u>Total</u>
General Fund (10)				
2450 Nonpublic Health Services				
800 <u>Other Objects</u>				
890 Miscellaneous Expenditures				2,937.20
Total Other Objects				\$2,937.20
Total 2450 Nonpublic Health Services				\$2,937.20

	<u>Elementary</u>	<u>Secondary</u>	<u>Federal</u>	<u>Total</u>
General Fund (10)				
2490 Other Health Services				
300 <u>Purchased Professional and Technical Services</u>				
330 Other Professional Services				251.00
Total Purchased Professional and Technical Services				\$251.00
Total 2490 Other Health Services				\$251.00

	Elementary	Secondary	Federal	Total
General Fund (10)				
2500 Support Services – Business				
<u>100 Personnel Services – Salaries</u>				
100 Personnel Services – Salaries				343,146.91
Total Personnel Services – Salaries				\$343,146.91
<u>200 Personnel Services – Employee Benefits</u>				
210 Group Insurance – Contracted Provider				111,845.53
220 Social Security Contributions				25,115.94
230 PSERS Retirement Contributions				116,838.91
270 Group Insurance – Self-Insurance				(11,868.54)
280 Other Post-Employment Benefits (OPEB)				9,200.00
291 Other Retirement Plans				7,950.00
Total Personnel Services – Employee Benefits				\$259,081.84
<u>300 Purchased Professional and Technical Services</u>				
329 Professional Educational Services – Other				27,187.50
330 Other Professional Services				41,872.36
340 Technical Services				5,810.00
Total Purchased Professional and Technical Services				\$74,869.86
<u>400 Purchased Property Services</u>				
440 Rentals				41,468.28
Total Purchased Property Services				\$41,468.28
<u>500 Other Purchased Services</u>				
530 Communications				9,000.00
550 Printing and Binding				1,400.29
580 Travel				212.47
Total Other Purchased Services				\$10,612.76
<u>600 Supplies</u>				
610 General Supplies				3,673.00
Total Supplies				\$3,673.00
<u>800 Other Objects</u>				
810 Dues and Fees				2,473.66
890 Miscellaneous Expenditures				3,061.31
Total Other Objects				\$5,534.97
Total 2500 Support Services – Business				\$738,387.62

General Fund (10)

2510 Fiscal Services

100 Personnel Services – Salaries

100 Personnel Services – Salaries

343,146.91

\$343,146.91

200 Personnel Services – Employee Benefits

210 Group Insurance – Contracted Provider

111,845.53

220 Social Security Contributions

25,115.94

230 PSERS Retirement Contributions

116,838.91

270 Group Insurance – Self-Insurance

(11,868.54)

280 Other Post-Employment Benefits (OPEB)

9,200.00

291 Other Retirement Plans

7,950.00

Total Personnel Services – Employee Benefits

\$259,081.84

300 Purchased Professional and Technical Services

329 Professional Educational Services – Other

27,187.50

330 Other Professional Services

41,872.36

340 Technical Services

4,310.00

Total Purchased Professional and Technical Services

\$73,369.86

400 Purchased Property Services

440 Rentals

38,168.28

Total Purchased Property Services

\$38,168.28

500 Other Purchased Services

580 Travel

212.47

Total Other Purchased Services

\$212.47

600 Supplies

610 General Supplies

806.12

Total Supplies

\$806.12

800 Other Objects

810 Dues and Fees

2,473.66

Total Other Objects

\$2,473.66

Total 2510 Fiscal Services

\$717,259.14

General Fund (10)

2511 Supervision of Fiscal Services - Head of Component

100 Personnel Services – Salaries

100 Personnel Services – Salaries

170,828.95

Total Personnel Services – Salaries

\$170,828.95

200 Personnel Services – Employee Benefits

210 Group Insurance – Contracted Provider

54,631.87

220 Social Security Contributions

12,706.09

230 PSERS Retirement Contributions

58,849.01

270 Group Insurance – Self-Insurance

(11,868.54)

280 Other Post-Employment Benefits (OPEB)

3,200.00

291 Other Retirement Plans

7,950.00

Total Personnel Services – Employee Benefits

\$125,468.43

300 Purchased Professional and Technical Services

329 Professional Educational Services – Other

27,187.50

330 Other Professional Services

1,852.36

Total Purchased Professional and Technical Services

\$29,039.86

500 Other Purchased Services

580 Travel

212.47

Total Other Purchased Services

\$212.47

600 Supplies

610 General Supplies

578.35

Total Supplies

\$578.35

800 Other Objects

810 Dues and Fees

2,473.66

Total Other Objects

\$2,473.66

Total 2511 Supervision of Fiscal Services - Head of Component

\$328,601.72

General Fund (10)

2513 Receiving and Disbursing Funds Services

100 Personnel Services – Salaries

100 Personnel Services – Salaries

50,768.69

Total Personnel Services – Salaries

\$50,768.69

200 Personnel Services – Employee Benefits

210 Group Insurance – Contracted Provider

9,607.00

220 Social Security Contributions

3,697.12

230 PSERS Retirement Contributions

16,830.83

Total Personnel Services – Employee Benefits

\$30,134.95

Total 2513 Receiving and Disbursing Funds Services

\$80,903.64

	Elementary	Secondary	Federal	Total
General Fund (10)				
2514 Payroll Services				
100 Personnel Services – Salaries				
100 Personnel Services – Salaries	59,116.50			\$59,116.50
200 Personnel Services – Employee Benefits				
210 Group Insurance – Contracted Provider	22,390.12			22,390.12
220 Social Security Contributions	4,230.81			4,230.81
230 PSERS Retirement Contributions	20,131.27			20,131.27
Total Personnel Services – Employee Benefits	\$46,752.20			
300 Purchased Professional and Technical Services				
330 Other Professional Services	2,920.00			2,920.00
340 Technical Services	4,310.00			4,310.00
Total Purchased Professional and Technical Services	\$7,230.00			
400 Purchased Property Services				
440 Rentals	16,640.24			16,640.24
Total Purchased Property Services	\$16,640.24			
600 Supplies				
610 General Supplies	215.63			215.63
Total Supplies	\$215.63			
Total 2514 Payroll Services	\$129,954.57			

General Fund (10)

2515 Financial Accounting Services

100 Personnel Services – Salaries

100 Personnel Services – Salaries

	62,432.77			
Total Personnel Services – Salaries	\$62,432.77			

200 Personnel Services – Employee Benefits

210 Group Insurance – Contracted Provider

220 Social Security Contributions

230 PSERS Retirement Contributions

280 Other Post-Employment Benefits (OPEB)

25,216.54				
4,481.92				
21,027.80				
6,000.00				
\$56,726.26				

Total Personnel Services – Employee Benefits

300 Purchased Professional and Technical Services

330 Other Professional Services

6,700.00				
\$6,700.00				

Total Purchased Professional and Technical Services

400 Purchased Property Services

440 Rentals

21,528.04				
\$21,528.04				

Total Purchased Property Services

600 Supplies

610 General Supplies

12.14				
\$12.14				

Total Supplies

Total 2515 Financial Accounting Services

\$147,399.21				
---------------------	--	--	--	--

	Elementary	Secondary	Federal	Total
General Fund (10)				
2516 Internal Auditing Services				
300 <u>Purchased Professional and Technical Services</u>				
330 Other Professional Services				30,400.00
Total Purchased Professional and Technical Services				\$30,400.00
Total 2516 Internal Auditing Services				\$30,400.00

	Elementary	Secondary	Federal	Total
General Fund (10)				
2520 Purchasing Services				
<u>300 Purchased Professional and Technical Services</u>				
340 Technical Services	1,500.00			1,500.00
Total Purchased Professional and Technical Services	\$1,500.00			\$1,500.00
400 Purchased Property Services				
440 Rentals	3,300.00			3,300.00
Total Purchased Property Services	\$3,300.00			\$3,300.00
500 Other Purchased Services				
530 Communications			9,000.00	9,000.00
550 Printing and Binding			1,400.29	1,400.29
Total Other Purchased Services			\$10,400.29	\$10,400.29
600 Supplies				
610 General Supplies			2,866.88	2,866.88
Total Supplies			\$2,866.88	\$2,866.88
800 Other Objects				
890 Miscellaneous Expenditures			3,061.31	3,061.31
Total Other Objects			\$3,061.31	\$3,061.31
Total 2520 Purchasing Services			\$21,128.48	\$21,128.48

General Fund (10)

2600 Operation and Maintenance of Plant Services

100 Personnel Services – Salaries

100 Personnel Services – Salaries	Elementary	Secondary	Federal	Total
			5,612.50	786,838.16
Total Personnel Services – Salaries			\$5,612.50	\$786,838.16

200 Personnel Services – Employee Benefits

210 Group Insurance – Contracted Provider				407,593.51
220 Social Security Contributions			427.57	58,902.22
230 PSERS Retirement Contributions			1,873.64	271,724.05
260 Workers' Compensation				11,633.10
270 Group Insurance – Self-Insurance				114.44
280 Other Post-Employment Benefits (OPEB)				6,000.00
291 Other Retirement Plans				1,500.00
Total Personnel Services – Employee Benefits			\$2,301.21	\$757,467.32

300 Purchased Professional and Technical Services

330 Other Professional Services				52,046.46
350 Security / Safety Services				12,364.31
Total Purchased Professional and Technical Services				\$64,410.77

400 Purchased Property Services

410 Cleaning Services				21,194.31
420 Utility Services				128,400.93
430 Repairs and Maintenance Services				251,774.26
440 Rentals				1,184.99
450 Construction Services				4,500.00
460 Extermination Services				14,622.10
Total Purchased Property Services				\$421,676.59

500 Other Purchased Services

521 Fire Insurance				79.30
522 Automotive Liability Insurance				11,952.00
523 General Property and Liability Insurance				132,556.91
530 Communications				18,068.87
Total Other Purchased Services				\$162,657.08

600 Supplies

610 General Supplies			113,610.62	270,346.66
620 Energy			129,535.40	656,739.95
Total Supplies			\$113,610.62	\$927,086.61

800 Other Objects

810 Dues and Fees				3,274.31
890 Miscellaneous Expenditures				1,600.00
Total Other Objects				\$4,874.31

Total 2600 Operation and Maintenance of Plant Services

			\$113,610.62	\$35,114.35	\$129,535.40	\$3,125,010.84
--	--	--	---------------------	--------------------	---------------------	-----------------------

General Fund (10)	Elementary	Secondary	Federal	Total
2610 Supervision of Operation and Maintenance of Plant Services				
100 Personnel Services – Salaries				108,406.06
100 Personnel Services – Salaries				\$108,406.06
200 Personnel Services – Employee Benefits				46,145.02
210 Group Insurance – Contracted Provider				7,771.55
220 Social Security Contributions				36,828.89
230 PSERS Retirement Contributions				\$90,745.46
Total Personnel Services – Employee Benefits				
800 Other Objects				1,600.00
890 Miscellaneous Expenditures				\$1,600.00
Total Other Objects				\$200,751.52
Total 2610 Supervision of Operation and Maintenance of Plant Services				

General Fund (10)		Elementary	Secondary	Federal	Total
2611 Supervision of Operation and Maintenance of Plant Services – Head of Component					
800	<u>Other Objects</u>				
	890 Miscellaneous Expenditures				1,600.00
Total Other Objects					\$1,600.00
Total 2611 Supervision of Operation and Maintenance of Plant Services – Head of Component					\$1,600.00

General Fund (10)

2619 Supervision of Operation and Maintenance of Plant Services – All Other Supervision

100 Personnel Services – Salaries

100 Personnel Services – Salaries

108,406.06
\$108,406.06

200 Personnel Services – Employee Benefits

210 Group Insurance – Contracted Provider

220 Social Security Contributions

230 PSERS Retirement Contributions

46,145.02
 7,771.55
 36,828.89

Total Personnel Services – Employee Benefits

\$90,745.46

Total 2619 Supervision of Operation and Maintenance of Plant Services – All Other Supervision

\$199,151.52

General Fund (10)

2620 Operation of Buildings Services

100 Personnel Services – Salaries

100 Personnel Services – Salaries

	Elementary	Secondary	Federal	Total
			5,612.50	534,856.85
Total Personnel Services – Salaries			\$5,612.50	\$534,856.85

200 Personnel Services – Employee Benefits

210 Group Insurance – Contracted Provider
 220 Social Security Contributions
 230 PSERS Retirement Contributions
 260 Workers' Compensation
 291 Other Retirement Plans

	Elementary	Secondary	Federal	Total
			427.57	323,340.62
			1,873.64	40,450.52
				186,384.09
				11,633.10
				1,500.00
Total Personnel Services – Employee Benefits			\$2,301.21	\$563,308.33

400 Purchased Property Services

410 Cleaning Services
 420 Utility Services
 430 Repairs and Maintenance Services
 440 Rentals
 450 Construction Services
 460 Extermination Services

	Elementary	Secondary	Federal	Total
				21,194.31
				128,400.93
				251,240.01
				980.39
				4,500.00
				14,622.10
Total Purchased Property Services				\$420,937.74

500 Other Purchased Services

521 Fire Insurance
 522 Automotive Liability Insurance
 523 General Property and Liability Insurance
 530 Communications

	Elementary	Secondary	Federal	Total
				79.30
				11,952.00
				132,556.91
				8,528.87
Total Other Purchased Services				\$153,117.08

600 Supplies

610 General Supplies
 620 Energy

	Elementary	Secondary	Federal	Total
	101,751.32	117,676.09	21,005.64	240,433.05
Total Supplies	\$101,751.32	\$117,676.09	\$21,005.64	\$895,140.44

800 Other Objects

810 Dues and Fees

	Elementary	Secondary	Federal	Total
				3,274.31
Total Other Objects				\$3,274.31

Total 2620 Operation of Buildings Services

	Elementary	Secondary	Federal	Total
	\$101,751.32	\$117,676.09	\$28,919.35	\$2,570,634.75

General Fund (10)

2630 Care and Upkeep of Grounds Services

100 Personnel Services – Salaries

100 Personnel Services – Salaries

113,207.12

Total Personnel Services – Salaries

\$113,207.12

200 Personnel Services – Employee Benefits

- 210 Group Insurance – Contracted Provider
- 220 Social Security Contributions
- 230 PSERS Retirement Contributions
- 270 Group Insurance – Self-Insurance
- 280 Other Post-Employment Benefits (OPEB)

28,605.91
8,429.81
39,292.60
114.44
6,000.00

Total Personnel Services – Employee Benefits

\$82,442.76

400 Purchased Property Services

440 Rentals

204.60

Total Purchased Property Services

\$204.60

600 Supplies

610 General Supplies

9,947.80

19,895.62

Total Supplies

\$9,947.80

\$19,895.62

Total 2630 Care and Upkeep of Grounds Services

\$9,947.80

\$215,750.10

General Fund (10)

2650 Vehicle Operation and Maintenance Services (Other Than Student Transportation Vehicles)

100 Personnel Services – Salaries

100 Personnel Services – Salaries

5,967.00

Total Personnel Services – Salaries

\$5,967.00

200 Personnel Services – Employee Benefits

210 Group Insurance – Contracted Provider

3,563.30

220 Social Security Contributions

429.21

230 PSERS Retirement Contributions

2,084.94

Total Personnel Services – Employee Benefits

\$6,077.45

400 Purchased Property Services

430 Repairs and Maintenance Services

534.25

Total Purchased Property Services

\$534.25

600 Supplies

610 General Supplies

1,911.50

3,822.99

620 Energy

2,032.56

Total Supplies

\$1,911.50

\$5,855.55

Total 2650 Vehicle Operation and Maintenance Services (Other Than Student Transportation Vehicles)

\$1,911.50

\$18,434.25

General Fund (10)	Elementary	Secondary	Federal	Total
2660 Safety and Security Services				
100 Personnel Services – Salaries				
100 Personnel Services – Salaries				24,401.13
Total Personnel Services – Salaries				\$24,401.13
200 Personnel Services – Employee Benefits				
210 Group Insurance – Contracted Provider				5,938.66
220 Social Security Contributions				1,821.13
230 PSERS Retirement Contributions				7,133.53
Total Personnel Services – Employee Benefits				\$14,893.32
300 Purchased Professional and Technical Services				
330 Other Professional Services				52,046.46
350 Security / Safety Services				12,364.31
Total Purchased Professional and Technical Services				\$64,410.77
500 Other Purchased Services				
530 Communications				9,540.00
Total Other Purchased Services				\$9,540.00
600 Supplies				
610 General Supplies			6,195.00	6,195.00
Total Supplies			\$6,195.00	\$6,195.00
Total 2660 Safety and Security Services			\$6,195.00	\$119,440.22

General Fund (10)

2700 Student Transportation Services

100 Personnel Services – Salaries

100 Personnel Services – Salaries

	Elementary	Secondary	Federal	Total
	12,588.82		12,588.82	452,488.54
Total Personnel Services – Salaries			\$12,588.82	\$452,488.54

200 Personnel Services – Employee Benefits

210 Group Insurance – Contracted Provider

220 Social Security Contributions

230 PSERS Retirement Contributions

260 Workers' Compensation

270 Group Insurance – Self-Insurance

280 Other Post-Employment Benefits (OPEB)

	Elementary	Secondary	Federal	Total
			317.51	53,966.32
		1,294.81		34,286.56
			2,908.41	151,459.00
			636.11	2,908.41
			1,600.00	636.11
Total Personnel Services – Employee Benefits			\$1,612.32	\$244,856.40

300 Purchased Professional and Technical Services

330 Other Professional Services

	Elementary	Secondary	Federal	Total
				2,968.00
Total Purchased Professional and Technical Services				\$2,968.00

400 Purchased Property Services

430 Repairs and Maintenance Services

	Elementary	Secondary	Federal	Total
				8,250.29
Total Purchased Property Services				\$8,250.29

500 Other Purchased Services

516 Student Transportation Services From the IU

550 Printing and Binding

	Elementary	Secondary	Federal	Total
				42,033.34
				2,115.17
Total Other Purchased Services				\$44,148.51

600 Supplies

610 General Supplies

620 Energy

650 Supplies & Fees – Technology Related

	Elementary	Secondary	Federal	Total
				22,205.26
				45,833.59
				32,646.04
Total Supplies				\$100,684.89

700 Property

762 Capitalized Equipment - Replacement

	Elementary	Secondary	Federal	Total
				810,700.00
Total Property				\$810,700.00

Total 2700 Student Transportation Services

	Elementary	Secondary	Federal	Total
			\$14,201.14	\$1,664,096.63
Total 2700 Student Transportation Services			\$14,201.14	\$1,664,096.63

General Fund (10)

2710 Supervision of Student Transportation Services

100 Personnel Services – Salaries

	Elementary	Secondary	Federal	Total
100 Personnel Services – Salaries				39,273.87
Total Personnel Services – Salaries				\$39,273.87

200 Personnel Services – Employee Benefits

210 Group Insurance – Contracted Provider				66.96
220 Social Security Contributions				3,004.57
230 PSERS Retirement Contributions				12,097.52
280 Other Post-Employment Benefits (OPEB)				1,600.00

Total Personnel Services – Employee Benefits

Total Personnel Services – Employee Benefits				\$16,769.05
-----------------------------------------------------	--	--	--	--------------------

Total 2710 Supervision of Student Transportation Services

Total 2710 Supervision of Student Transportation Services				\$56,042.92
------------------------------------------------------------------	--	--	--	--------------------

General Fund (10)

2711 Supervision of Student Transportation Services – Head of Component

	<u>Elementary</u>	<u>Secondary</u>	<u>Federal</u>	<u>Total</u>
100 Personnel Services – Salaries				
100 Personnel Services – Salaries				39,273.87
Total Personnel Services – Salaries				\$39,273.87
200 Personnel Services – Employee Benefits				
210 Group Insurance – Contracted Provider				66.96
220 Social Security Contributions				3,004.57
230 PSERS Retirement Contributions				12,097.52
280 Other Post-Employment Benefits (OPEB)				1,600.00
Total Personnel Services – Employee Benefits				\$16,769.05
Total 2711 Supervision of Student Transportation Services – Head of Component				\$56,042.92

	Elementary	Secondary	Federal	Total
General Fund (10)				
2720 Vehicle Operation Services				
100 Personnel Services – Salaries				
100 Personnel Services – Salaries	12,588.82			346,740.63
Total Personnel Services – Salaries	\$12,588.82			\$346,740.63
200 Personnel Services – Employee Benefits				
210 Group Insurance – Contracted Provider				30,669.27
220 Social Security Contributions		317.51		26,466.81
230 PSERS Retirement Contributions		1,294.81		115,326.52
260 Workers' Compensation				2,908.41
270 Group Insurance – Self-Insurance				546.98
Total Personnel Services – Employee Benefits			\$1,612.32	\$175,917.99
300 Purchased Professional and Technical Services				
330 Other Professional Services				2,968.00
Total Purchased Professional and Technical Services				\$2,968.00
400 Purchased Property Services				
430 Repairs and Maintenance Services				7,217.02
Total Purchased Property Services				\$7,217.02
500 Other Purchased Services				
516 Student Transportation Services From the IU				42,033.34
550 Printing and Binding				1,509.96
Total Other Purchased Services				\$43,543.30
600 Supplies				
610 General Supplies				20,517.00
620 Energy				45,833.59
650 Supplies & Fees – Technology Related				32,646.04
Total Supplies				\$98,996.63
700 Property				
762 Capitalized Equipment - Replacement				810,700.00
Total Property				\$810,700.00
Total 2720 Vehicle Operation Services			\$14,201.14	\$1,486,083.57

General Fund (10)		Elementary	Secondary	Federal	Total
2740 Vehicle Servicing and Maintenance Services					
100 Personnel Services – Salaries					
100 Personnel Services – Salaries					32,528.40
Total Personnel Services – Salaries					\$32,528.40
200 Personnel Services – Employee Benefits					
210 Group Insurance – Contracted Provider					18,528.89
220 Social Security Contributions					2,231.48
230 PSERS Retirement Contributions					10,841.22
Total Personnel Services – Employee Benefits					\$31,601.59
400 Purchased Property Services					
430 Repairs and Maintenance Services					539.12
Total Purchased Property Services					\$539.12
Total 2740 Vehicle Servicing and Maintenance Services					\$64,669.11

LEA : 129546103 Pottsville Area SD

Printed 11/21/2022 9:09:08 AM

General Fund (10)	Elementary	Secondary	Federal	Total
2750 Nonpublic Transportation				
100 Personnel Services – Salaries				
100 Personnel Services – Salaries				33,945.64
Total Personnel Services – Salaries				\$33,945.64
200 Personnel Services – Employee Benefits				
210 Group Insurance – Contracted Provider				4,701.20
220 Social Security Contributions				2,583.70
230 PSERS Retirement Contributions				13,193.74
270 Group Insurance – Self-Insurance				89.13
Total Personnel Services – Employee Benefits				\$20,567.77
400 Purchased Property Services				
430 Repairs and Maintenance Services				494.15
Total Purchased Property Services				\$494.15
500 Other Purchased Services				
550 Printing and Binding				605.21
Total Other Purchased Services				\$605.21
600 Supplies				
610 General Supplies				1,688.26
Total Supplies				\$1,688.26
Total 2750 Nonpublic Transportation				\$57,301.03

	Elementary	Secondary	Federal	Total
General Fund (10)				
2800 Support Services – Central				
100 Personnel Services – Salaries				
100 Personnel Services – Salaries	41,361.91			347,986.41
Total Personnel Services – Salaries	\$41,361.91			\$347,986.41
200 Personnel Services – Employee Benefits				
210 Group Insurance – Contracted Provider	57.66		54,520.40	54,520.40
220 Social Security Contributions	3,149.21		23,687.82	23,687.82
230 PSERS Retirement Contributions	14,451.84		105,019.29	105,019.29
Total Personnel Services – Employee Benefits	\$17,658.71			\$183,227.51
300 Purchased Professional and Technical Services				
340 Technical Services			32,984.19	32,984.19
360 Employee Training and Development Services			50.00	50.00
Total Purchased Professional and Technical Services			\$33,034.19	
400 Purchased Property Services				
430 Repairs and Maintenance Services			45,007.31	45,007.31
440 Rentals			29,805.92	29,805.92
Total Purchased Property Services			\$74,813.23	
500 Other Purchased Services				
530 Communications	94,410.08		225,961.89	225,961.89
Total Other Purchased Services	\$94,410.08			\$225,961.89
600 Supplies				
610 General Supplies			7,214.18	7,214.18
650 Supplies & Fees – Technology Related	69,340.00		246,256.46	246,256.46
Total Supplies	\$69,340.00			\$253,470.64
700 Property				
762 Capitalized Equipment - Replacement			5,000.00	5,000.00
766 Capitalized Technology Equipment – Replacement	89,264.94		103,908.94	103,908.94
768 Capitalized Technology Software - Replacement			41,774.04	41,774.04
Total Property	\$89,264.94			\$150,682.98
800 Other Objects				
810 Dues and Fees			533.34	533.34
890 Miscellaneous Expenditures			225.00	225.00
Total Other Objects			\$758.34	
Total 2800 Support Services – Central	\$312,035.64			\$1,269,935.19

General Fund (10)	Elementary	Secondary	Federal	Total
2810 Planning, Research, Development and Evaluation Services				
100 Personnel Services – Salaries				
100 Personnel Services – Salaries				289,143.73
Total Personnel Services – Salaries				\$289,143.73
200 Personnel Services – Employee Benefits				
210 Group Insurance – Contracted Provider				51,636.40
220 Social Security Contributions				19,281.46
230 PSERS Retirement Contributions				84,721.75
Total Personnel Services – Employee Benefits				\$155,639.61
300 Purchased Professional and Technical Services				
340 Technical Services				32,984.19
Total Purchased Professional and Technical Services				\$32,984.19
400 Purchased Property Services				
430 Repairs and Maintenance Services				45,007.31
440 Rentals				29,805.92
Total Purchased Property Services				\$74,813.23
500 Other Purchased Services				
530 Communications			94,410.08	225,961.89
Total Other Purchased Services			\$94,410.08	\$225,961.89
600 Supplies				
610 General Supplies				7,214.18
650 Supplies & Fees – Technology Related			69,340.00	246,256.46
Total Supplies			\$69,340.00	\$253,470.64
700 Property				
762 Capitalized Equipment - Replacement				5,000.00
766 Capitalized Technology Equipment – Replacement			89,264.94	103,908.94
768 Capitalized Technology Software - Replacement				41,774.04
Total Property			\$89,264.94	\$150,682.98
Total 2810 Planning, Research, Development and Evaluation Services			\$253,015.02	\$1,182,696.27

	Elementary	Secondary	Federal	Total
General Fund (10)				
2830 Staff Services				
100 Personnel Services – Salaries				
100 Personnel Services – Salaries	17,480.77			17,480.77
200 Personnel Services – Employee Benefits				
210 Group Insurance – Contracted Provider			2,826.34	2,826.34
220 Social Security Contributions			1,257.15	1,257.15
230 PSERS Retirement Contributions			5,845.70	5,845.70
Total Personnel Services – Employee Benefits			\$9,929.19	\$9,929.19
300 Purchased Professional and Technical Services				
360 Employee Training and Development Services			50.00	50.00
Total Purchased Professional and Technical Services			\$50.00	\$50.00
800 Other Objects				
810 Dues and Fees			533.34	533.34
890 Miscellaneous Expenditures			225.00	225.00
Total Other Objects			\$758.34	\$758.34
Total 2830 Staff Services			\$28,218.30	\$28,218.30

	<u>Elementary</u>	<u>Secondary</u>	<u>Federal</u>	<u>Total</u>
General Fund (10)				
2832 Recruitment and Placement Services				
800 <u>Other Objects</u>				
890 Miscellaneous Expenditures				225.00
Total Other Objects				\$225.00
Total 2832 Recruitment and Placement Services				\$225.00

General Fund (10)

2833 Staff Accounting Services

100 Personnel Services – Salaries

100 Personnel Services – Salaries

17,480.77
\$17,480.77

200 Personnel Services – Employee Benefits

210 Group Insurance – Contracted Provider

220 Social Security Contributions

230 PSERS Retirement Contributions

2,826.34
 1,257.15
 5,845.70

Total Personnel Services – Employee Benefits

\$9,929.19

Total 2833 Staff Accounting Services

\$27,409.96

General Fund (10)	Elementary	Secondary	Federal	Total
2834 Staff Development Services – Non-Instructional, Certified Staff Only				
300 <u>Purchased Professional and Technical Services</u>				
360 Employee Training and Development Services				50.00
Total Purchased Professional and Technical Services				\$50.00
800 <u>Other Objects</u>				
810 Dues and Fees				533.34
Total Other Objects				\$533.34
Total 2834 Staff Development Services – Non-Instructional, Certified Staff Only				\$583.34

General Fund (10)

2850 State and Federal Agency Liaison Services

100 Personnel Services – Salaries

	Elementary	Secondary	Federal	Total
100 Personnel Services – Salaries			41,361.91	41,361.91
Total Personnel Services – Salaries			\$41,361.91	\$41,361.91

200 Personnel Services – Employee Benefits

210 Group Insurance – Contracted Provider			57.66	57.66
220 Social Security Contributions			3,149.21	3,149.21
230 PSERS Retirement Contributions			14,451.84	14,451.84
Total Personnel Services – Employee Benefits			\$17,658.71	\$17,658.71

Total 2850 State and Federal Agency Liaison Services

Total 2850 State and Federal Agency Liaison Services			\$59,020.62	\$59,020.62
-------------------------------------------------------------	--	--	--------------------	--------------------

	<u>Total</u>
General Fund (10)	
3000 Operation of Non-Instructional Services	
100 Personnel Services – Salaries	
100 Personnel Services – Salaries	420,049.81
Total Personnel Services – Salaries	\$420,049.81
200 Personnel Services – Employee Benefits	
210 Group Insurance – Contracted Provider	9,607.00
220 Social Security Contributions	31,685.89
230 PSERS Retirement Contributions	140,843.52
260 Workers' Compensation	3,979.74
Total Personnel Services – Employee Benefits	\$186,116.15
300 Purchased Professional and Technical Services	
322 Professional Educational Services – Ius	375.00
330 Other Professional Services	28,300.00
390 Other Purchased Professional and Technical Services	27,280.00
Total Purchased Professional and Technical Services	\$55,955.00
400 Purchased Property Services	
410 Cleaning Services	529.00
430 Repairs and Maintenance Services	9,841.68
440 Rentals	10,281.92
Total Purchased Property Services	\$20,652.60
500 Other Purchased Services	
549 Other Advertising/Public Relations	300.00
580 Travel	2,572.02
Total Other Purchased Services	\$2,872.02
600 Supplies	
610 General Supplies	54,251.36
630 Food	2,455.00
650 Supplies & Fees – Technology Related	7,700.00
Total Supplies	\$64,406.36
700 Property	
762 Capitalized Equipment - Replacement	25,680.00
Total Property	\$25,680.00
800 Other Objects	
810 Dues and Fees	1,220.00
890 Miscellaneous Expenditures	110,742.82
Total Other Objects	\$111,962.82
Total 3000 Operation of Non-Instructional Services	\$887,694.76

	Elementary	Secondary	Federal	Total
General Fund (10)				
3200 Student Activities				
100 Personnel Services – Salaries				
100 Personnel Services – Salaries	387,593.75			\$387,593.75
200 Personnel Services – Employee Benefits				
210 Group Insurance – Contracted Provider	9,607.00			9,607.00
220 Social Security Contributions	29,244.07			29,244.07
230 PSERS Retirement Contributions	131,460.35			131,460.35
260 Workers' Compensation	3,979.74			3,979.74
Total Personnel Services – Employee Benefits	\$174,291.16			
300 Purchased Professional and Technical Services				
330 Other Professional Services	28,300.00			28,300.00
390 Other Purchased Professional and Technical Services	27,280.00			27,280.00
Total Purchased Professional and Technical Services	\$55,580.00			
400 Purchased Property Services				
410 Cleaning Services	529.00			529.00
430 Repairs and Maintenance Services	9,841.68			9,841.68
440 Rentals	10,281.92			10,281.92
Total Purchased Property Services	\$20,652.60			
500 Other Purchased Services				
580 Travel	2,572.02			2,572.02
Total Other Purchased Services	\$2,572.02			
600 Supplies				
610 General Supplies	43,012.74			43,012.74
630 Food	2,230.00			2,230.00
650 Supplies & Fees – Technology Related	7,700.00			7,700.00
Total Supplies	\$52,942.74			
700 Property				
762 Capitalized Equipment - Replacement	25,680.00			25,680.00
Total Property	\$25,680.00			
800 Other Objects				
810 Dues and Fees	1,220.00			1,220.00
890 Miscellaneous Expenditures	1,274.00			1,274.00
Total Other Objects	\$2,494.00			
Total 3200 Student Activities	\$721,806.27			

General Fund (10)

3300 Community Services

100 Personnel Services – Salaries

100 Personnel Services – Salaries

	Elementary	Secondary	Federal	Total
	2,504.00		2,504.00	32,456.06
Total Personnel Services – Salaries			\$2,504.00	\$32,456.06

200 Personnel Services – Employee Benefits

220 Social Security Contributions

230 PSERS Retirement Contributions

	Elementary	Secondary	Federal	Total
			187.92	2,441.82
			874.91	9,383.17
Total Personnel Services – Employee Benefits			\$1,062.83	\$11,824.99

300 Purchased Professional and Technical Services

322 Professional Educational Services – Ius

	Elementary	Secondary	Federal	Total
			375.00	375.00
Total Purchased Professional and Technical Services			\$375.00	\$375.00

600 Supplies

610 General Supplies

630 Food

	Elementary	Secondary	Federal	Total
			10,738.69	11,238.62
				225.00
Total Supplies			\$10,738.69	\$11,463.62

Total 3300 Community Services

	Elementary	Secondary	Federal	Total
			\$14,680.52	\$56,119.67
Total 3300 Community Services			\$14,680.52	\$56,119.67

	<u>Elementary</u>	<u>Secondary</u>	<u>Federal</u>	<u>Total</u>
General Fund (10)				
3400 Scholarships and Awards				
500 <u>Other Purchased Services</u>				
549 Other Advertising/Public Relations				300.00
Total Other Purchased Services				\$300.00
800 <u>Other Objects</u>				
890 Miscellaneous Expenditures				109,468.82
Total Other Objects				\$109,468.82
Total 3400 Scholarships and Awards				\$109,768.82

General Fund (10)	<u>Total</u>
4000 Facilities Acquisition, Construction and Improvement Services	
300 Purchased Professional and Technical Services	
330 Other Professional Services	13,602.44
Total Purchased Professional and Technical Services	\$13,602.44
400 <u>Purchased Property Services</u>	
450 Construction Services	403,361.10
Total Purchased Property Services	\$403,361.10
Total 4000 Facilities Acquisition, Construction and Improvement Services	\$416,963.54

	<u>Elementary</u>	<u>Secondary</u>	<u>Federal</u>	<u>Total</u>
General Fund (10)				
4600 Existing Building Improvement Services				
300 <u>Purchased Professional and Technical Services</u>				
330 Other Professional Services				13,602.44
Total Purchased Professional and Technical Services				\$13,602.44
400 <u>Purchased Property Services</u>				
450 Construction Services				403,361.10
Total Purchased Property Services				\$403,361.10
Total 4600 Existing Building Improvement Services				\$416,963.54

General Fund (10)	<u>Total</u>
5000 Other Expenditures and Financing Uses	
800 Other Objects	
830 Interest	172,324.19
Total Other Objects	\$172,324.19
900 Other Uses of Funds	
910 Redemption of Principal	983,408.18
932 Capital Reserve Fund Transfers Applicable To Fund 32	500,000.00
Total Other Uses of Funds	\$1,483,408.18
Total 5000 Other Expenditures and Financing Uses	\$1,655,732.37

General Fund (10)	Elementary	Secondary	Federal	Total
5100 Debt Service / Other Expenditures and Financing Uses				
800 <u>Other Objects</u>				
830 Interest			15,595.91	172,324.19
Total Other Objects			\$15,595.91	\$172,324.19
900 <u>Other Uses of Funds</u>				
910 Redemption of Principal			335,829.66	983,408.18
Total Other Uses of Funds			\$335,829.66	\$983,408.18
Total 5100 Debt Service / Other Expenditures and Financing Uses			\$351,425.57	\$1,155,732.37

	<u>Elementary</u>	<u>Secondary</u>	<u>Federal</u>	<u>Total</u>
General Fund (10)				
5110 Debt Service				
800 <u>Other Objects</u>				
830 Interest	150,710.34			150,710.34
Total Other Objects	\$150,710.34			
900 <u>Other Uses of Funds</u>				
910 Redemption of Principal				325,207.51
Total Other Uses of Funds				\$325,207.51
Total 5110 Debt Service				\$475,917.85

	<u>Elementary</u>	<u>Secondary</u>	<u>Federal</u>	<u>Total</u>
General Fund (10)				
5140 Leases				
800 <u>Other Objects</u>				
830 Interest			15,595.91	21,613.85
Total Other Objects			\$15,595.91	\$21,613.85
900 <u>Other Uses of Funds</u>				
910 Redemption of Principal			335,829.66	658,200.67
Total Other Uses of Funds			\$335,829.66	\$658,200.67
Total 5140 Leases			\$351,425.57	\$679,814.52

	<u>Elementary</u>	<u>Secondary</u>	<u>Federal</u>	<u>Total</u>
General Fund (10)				
5200 Interfund Transfers – Out				
900 <u>Other Uses of Funds</u>				
932 Capital Reserve Fund Transfers Applicable To Fund 32				500,000.00
Total Other Uses of Funds				\$500,000.00
Total 5200 Interfund Transfers – Out				\$500,000.00

	<u>Elementary</u>	<u>Secondary</u>	<u>Federal</u>	<u>Total</u>
General Fund (10)				
5230 Capital Projects Fund Transfers				
900 <u>Other Uses of Funds</u>				
932 Capital Reserve Fund Transfers Applicable To Fund 32				500,000.00
Total Other Uses of Funds				\$500,000.00
Total 5230 Capital Projects Fund Transfers				\$500,000.00

	<u>General Fund(10)</u>	<u>Student Sponsored Activity Fund(21)</u>	<u>Public Purpose Trust(27)</u>	<u>Other Compt Approved (28)</u>	<u>Athletic / Activity(29)</u>
1000 Instruction					
1100 Regular Programs - Elementary / Secondary	15,942,869.35				
1200 Special Programs - Elementary / Secondary	8,622,815.91				
1300 Vocational Education	1,091,464.85				
1400 Other Instructional Programs - Elementary / Secondary	518,493.15				
1500 Nonpublic School Programs	34,239.25				
Total Instruction	\$26,209,882.51				
2000 Support Services					
2100 Support Services - Students	1,273,261.50				
2200 Support Services - Instructional Staff	827,383.99				
2300 Support Services - Administration	2,217,402.14				
2400 Support Services - Pupil Health	397,671.61				
2500 Support Services - Business	738,387.62				
2600 Operation and Maintenance of Plant Services	3,125,010.84				
2700 Student Transportation Services	1,664,096.63				
2800 Support Services - Central	1,269,935.19				
Total Support Services	\$11,513,149.52				
3000 Operation of Non-Instructional Services					
3200 Student Activities	721,806.27				
3300 Community Services	56,119.67				
3400 Scholarships and Awards	109,768.82				
Total Operation of Non-Instructional Services	\$887,694.76				
4000 Facilities Acquisition, Construction and Improvement Services					
4600 Existing Building Improvement Services	416,963.54				
Total Facilities Acquisition, Construction and Improvement Services	\$416,963.54				
5000 Other Expenditures and Financing Uses					
5100 Debt Service / Other Expenditures and Financing Uses	1,155,732.37				
5200 Interfund Transfers - Out	500,000.00				
Total Other Expenditures and Financing Uses	\$1,655,732.37				
TOTAL ACTUAL EXPENDITURES & OTHER FINANCING USES	\$40,683,422.70				

Capital Reserve (690, Capital Reserve (1431))(32) Other Capital Projects Fund(39) Debt Service(40) Permanent(90)

1000 Instruction

- 1100 Regular Programs - Elementary / Secondary
- 1200 Special Programs - Elementary / Secondary
- 1300 Vocational Education
- 1400 Other Instructional Programs - Elementary / Secondary
- 1500 Nonpublic School Programs

Total Instruction

2000 Support Services

- 2100 Support Services - Students
- 2200 Support Services - Instructional Staff
- 2300 Support Services - Administration
- 2400 Support Services - Pupil Health
- 2500 Support Services - Business
- 2600 Operation and Maintenance of Plant Services
- 2700 Student Transportation Services
- 2800 Support Services - Central

Total Support Services

3000 Operation of Non-Instructional Services

- 3200 Student Activities
- 3300 Community Services
- 3400 Scholarships and Awards

Total Operation of Non-Instructional Services

4000 Facilities Acquisition, Construction and Improvement Services

- 4600 Existing Building Improvement Services

Total Facilities Acquisition, Construction and Improvement Services

5000 Other Expenditures and Financing Uses

- 5100 Debt Service / Other Expenditures and Financing Uses
- 5200 Interfund Transfers - Out

Total Other Expenditures and Financing Uses

TOTAL ACTUAL EXPENDITURES & OTHER FINANCING USES

	<u>Total</u>
1000 Instruction	
1100 Regular Programs - Elementary / Secondary	15,942,869.35
1200 Special Programs - Elementary / Secondary	8,622,815.91
1300 Vocational Education	1,091,464.85
1400 Other Instructional Programs - Elementary / Secondary	518,493.15
1500 Nonpublic School Programs	34,239.25
Total Instruction	\$26,209,882.51
2000 Support Services	
2100 Support Services - Students	1,273,261.50
2200 Support Services - Instructional Staff	827,383.99
2300 Support Services - Administration	2,217,402.14
2400 Support Services - Pupil Health	397,671.61
2500 Support Services - Business	738,387.62
2600 Operation and Maintenance of Plant Services	3,125,010.84
2700 Student Transportation Services	1,664,096.63
2800 Support Services - Central	1,269,935.19
Total Support Services	\$11,513,149.52
3000 Operation of Non-Instructional Services	
3200 Student Activities	721,806.27
3300 Community Services	56,119.67
3400 Scholarships and Awards	109,768.82
Total Operation of Non-Instructional Services	\$887,694.76
4000 Facilities Acquisition, Construction and Improvement Services	
4600 Existing Building Improvement Services	416,963.54
Total Facilities Acquisition, Construction and Improvement Services	\$416,963.54
5000 Other Expenditures and Financing Uses	
5100 Debt Service / Other Expenditures and Financing Uses	1,155,732.37
5200 Interfund Transfers - Out	500,000.00
Total Other Expenditures and Financing Uses	\$1,655,732.37
TOTAL ACTUAL EXPENDITURES & OTHER FINANCING USES	\$40,683,422.70

PSERS Salary Data (Salary Data should relate to the General Fund only)

Amount Description	Amount
Total Salary Base for salaries subject to PSERS withholding	14,876,130.83
Total Federally Funded salaries subject to PSERS withholding	1,101,609.55

Title I Expenditure Data

Amount Description	Amount
Expenditures Funded with Current Title I Funds	795,642.00
Expenditures Funded with Carry over Title I Funds	
Total Title I Expenditure Data	\$795,642.00

Title IV Revenue Data

Amount Description	Amount
Revenue from Title IV-A-1: Student Support and Academic Enrichment Grants	60,655.69
Revenue from Title IV-B: 21st Century Community Learning Centers	

Title V Revenue Data

Amount Description	Amount
Revenue from Title V-B-2: Rural and Low-Income School Programs	
Revenue from Title V-B-1: Small Rural School Achievement (Directly from the Federal Govt)	

5,148,941.18

1 . Current Special Education Expenditures within Function 1000.</u></u>See list of exclusions in the note below.

1,710,057.67

2 . Current Special Education Expenditures within Function 2000.</u></u>See list of exclusions in the note below.

992,540.95

3 . Current Special Education Expenditures within Sub-Function 2100.</u></u>This data should also be included in line 2 above.</u></u>See list of exclusions in the note below.

594,615.82

4 . Current Special Education Expenditures within Sub-Function 2200.</u></u>This data should also be included in line 2 above.</u></u>See list of exclusions in the note below.

116,734.50

5 . Current Special Education Expenditures within Sub-Function 2700.</u></u>This data should also be included in line 2 above.</u></u>See list of exclusions in the note below.

6 . Current Special Education Expenditures within Sub-Function 3100.</u></u>See list of exclusions in the note below.

7 . Current Special Education Expenditures within Sub-Function 3200.</u></u>See list of exclusions in the note below.

Note: The Current Special Education Expenditure amounts for each line should be calculated as follows:

* Include the total expenditures for special education costs from all funds for the function/sub-function requested

* Exclude data from sub-functions: 1243,1450,1500,1600,1807,2280,2450,2750,2990

* Exclude data from objects: 322,511,512,516,561,562,564,566,592,593,594,595,596,597,700,830,899

Benefits for Staff Relative to Collective Bargaining Agreements

OBJECT	COVERED	NOT COVERED	TOTAL
10 General Fund			
No Self Insurance data to report			
211 Medical Insurance	4,516,025.20		4,516,025.20
212 Dental Insurance	209,960.05		209,960.05
215 Eye Care Insurance	18,392.56		18,392.56
216 Prescription Insurance			
271 Self-Insurance Medical Benefits			
272 Self-Insurance Dental Benefits			
275 Self-Insurance Eye Care Benefits			
276 Self-Insurance Prescription Benefits			
FUND TOTAL	\$4,744,377.81		\$4,744,377.81
50 Enterprise Fund			
No Self Insurance data to report			
211 Medical Insurance			
212 Dental Insurance			
215 Eye Care Insurance			
216 Prescription Insurance			
271 Self-Insurance Medical Benefits			
272 Self-Insurance Dental Benefits			
275 Self-Insurance Eye Care Benefits			
276 Self-Insurance Prescription Benefits			
FUND TOTAL			
60 Internal Service Fund			
No Self Insurance data to report			
211 Medical Insurance			
212 Dental Insurance			
215 Eye Care Insurance			
216 Prescription Insurance			
271 Self-Insurance Medical Benefits			
272 Self-Insurance Dental Benefits			
275 Self-Insurance Eye Care Benefits			
276 Self-Insurance Prescription Benefits			
FUND TOTAL			
Total of All Funds	\$4,744,377.81		\$4,744,377.81

Function	Special Education (Prior Year)	Nonspecial Education (Prior Year)	Total (Prior Year)	Special Education (Current Year)	Nonspecial Education (Current Year)	Total (Current Year)
2120 Guidance Services	106,103.30	378,691.08	484,794.38	133,722.90	464,054.92	597,777.82
2140 Psychological Services	55,311.78	196,105.41	251,417.19	49,619.13	172,191.92	221,811.05
2150 Speech Pathology and Audiology Services						
2160 Social Work Services	44,528.51	139,692.01	184,220.52	52,359.36	230,874.27	283,233.63
2260 Instruction and Curriculum Development Services	81,510.95	288,993.38	370,504.33	111,114.95	483,500.87	594,615.82
2350 Legal and Accounting Services	23,377.04	86,427.68	109,804.72	21,665.41	30,482.17	52,147.58
2420 Medical Services	1,164.20	4,127.63	5,291.83	1,359.41	4,717.54	6,076.95
2440 Nursing Services	84,348.11	299,052.41	383,400.52	86,761.96	301,087.65	387,849.61
2700 Student Transportation Services	210,293.31	745,585.35	955,878.66	290,410.00	1,252,974.60	1,543,384.60
Total	\$606,637.20	\$2,138,674.95	\$2,745,312.15	\$747,013.12	\$2,939,883.94	\$3,686,897.06

(PRINCIPAL AMOUNTS ONLY)

GOVERNMENTAL FUNDS/ACTIVITIES

	Short-Term Borrowing	General Obligation Bonds/Notes	Authority Building Obligations	OLTD, Ext Term Fin, Leases	Other Post-Employment Benefits (OPEB)	Compensated Absences	Net Pension Liability	Total
1. Debt at Beginning of Fiscal Year		4,375,000.00		2,649,907.74	4,392,261.00	732,728.75	56,695,643.00	68,845,540.49
2. Additional Debt Incurred During Year		1,000,000.00		810,700.00				1,810,700.00
3. Retirements and Repayments		215,000.00		768,408.18	119,054.00	34,501.25	15,330,238.00	16,467,201.43
4. Debt at End of Fiscal Year		5,160,000.00		2,692,199.56	4,273,207.00	698,227.50	41,365,405.00	54,189,039.06
5. Accreted Interest at End Of Fiscal Year								
6. Total Debt and Accreted Interest		5,160,000.00		2,692,199.56	4,273,207.00	698,227.50	41,365,405.00	54,189,039.06

7. Current Portion P&I - Due within 1 year		321,573.66		1,039,638.45		75,000.00		1,436,212.11
8. Interest Paid during current fiscal year		122,990.96		49,333.33				172,324.29

(PRINCIPAL AMOUNTS ONLY)

PROPRIETARY FUNDS

	Short-Term Borrowing	General Obligation Bonds/Notes	Authority Building Obligations	OLTD, Ext Term Fin, Leases	Other Post-Employment Benefits (OPEB)	Compensated Absences	Net Pension Liability	Total
1. Debt at Beginning of Fiscal Year					125,432.00		2,342,357.00	2,467,789.00
2. Additional Debt Incurred During Year					2,073.00		597,762.00	599,835.00
3. Retirements and Repayments								
4. Debt at End of Fiscal Year					123,359.00		1,744,595.00	1,867,954.00
5. Accreted Interest at End Of Fiscal Year								
6. Total Debt and Accreted Interest					123,359.00		1,744,595.00	1,867,954.00

7. Current Portion P&I - Due within 1 year
8. Interest Paid during current fiscal year

Total Principal and Interest Payments Made by Your School - All Funds

Function	Fund	Principal (910)	Principal (920)	Interest (830)	Total (Principal +Interest)	Misc Other Uses (990)
5110	10	General Fund	325,207.51	150,710.34	475,917.85	
5110	20	Special Revenue Funds				
5110	30	Capital Projects Funds				
5110	40	Debt Service Fund				
5110	90	Permanent Fund				
5120	10	General Fund				
5120	20	Special Revenue Funds				
5120	30	Capital Projects Funds				
5120	40	Debt Service Fund				
5140	10	General Fund	658,200.67	21,613.85	679,814.52	
5140	20	Special Revenue Funds				
5140	30	Capital Projects Funds				
5140	40	Debt Service Fund				
5140	90	Permanent Fund				
Total Debt Payments - Governmental Funds		\$983,408.18		\$172,324.19	\$1,155,732.37	

Function	Fund	Principal (910)	Principal (920)	Interest (830)	Total (Principal +Interest)
5110	50	Enterprise Fund			
5110	60	Internal Service Fund			
5120	50	Enterprise Fund			
5120	60	Internal Service Fund			
5140	50	Enterprise Fund			
5140	60	Internal Service Fund			
Total Debt Payments - Proprietary Funds					

Debt Details
Governmental Funds/ Activities

Debt Category	Debt Issue Date (MM/YYYY)	Principal Amounts Only			Debt at End of Fiscal Year	Current Portion Due Within One Year (Principal and Interest)	Interest Paid During Fiscal Year
		Debt at Beginning of Fiscal Year	Additions	Reductions / Repayments			
General Obligation Bonds/Notes – CIB	03/2021	4,375,000.00		215,000.00	4,160,000.00	321,573.66	106,573.66
General Obligation Bonds/Notes – CIB	08/2021		1,000,000.00		1,000,000.00		16,417.30
Extended Term Financing Agreements		1,846,598.11		110,207.51	1,736,390.60	115,123.93	27,719.48
Compensated Absences		732,728.75		34,501.25	698,227.50	75,000.00	
Other Post-Employment Benefits (OPEB)		4,392,261.00		119,054.00	4,273,207.00		
Net Pension Liability		56,695,643.00		15,330,238.00	41,365,405.00		
Leases		803,309.63	810,700.00	658,200.67	955,808.96	924,514.52	21,613.85
Totals for Debt Entered:		\$68,845,540.49	\$1,810,700.00	\$16,467,201.43	\$54,189,039.06	\$1,436,212.11	\$172,324.29

Bond Details
Proprietary Funds

Debt Category	Debt Issue Date (MM/YYYY)	Principal Amounts Only			Debt at End of Fiscal Year	Current Portion Due Within One Year (Principal and Interest)	Interest Paid During Fiscal Year
		Debt at Beginning of Fiscal Year	Additions	Reductions / Repayments			
Other Post-Employment Benefits (OPEB)		125,432.00		2,073.00	123,359.00		
Net Pension Liability		2,342,357.00		597,762.00	1,744,595.00		
Totals for Debt Entered:		\$2,467,789.00		\$599,835.00	\$1,867,954.00		

General Fund (10)

Section 1: Tuition/Purchased Services as Reported within Expenditure Detail

	Amount
Tuition Reported in General Fund Expenditures 1000-560	4,816,491.47
Purchased Services in General Fund Expenditures 1000-594 and 1000-597	332.79
Section 1 Total	\$4,816,824.26

Section 2: Tuition Paid to Institution Types During Fiscal Year

	Tuition Paid For Nonspecial Education	Tuition Paid For Special Education	Total
1 1306 Institutions			
2 Institutionalized Children's Programs	97,206.96	83,129.05	180,336.01
3 Juveniles Incarcerated in Adult Facilities	157,367.68	83,568.78	240,936.46
4 Residential Treatment Facilities			
5 Other Local Education Agencies	32,229.36	111,604.68	143,834.04
6 Brick and Mortar Charter Schools	408,821.57	473,008.61	881,830.18
7 Cyber Charter Schools	1,162,885.00	1,408,975.54	2,571,860.54
8 Career and Technology Centers	765,964.89		765,964.89
9 Approved Private Schools			
10 PA Chartered Schools for the Deaf and Blind			
11 Private Residential Rehabilitative Institutions			
12 Juvenile Detention Centers			
13 Special Program Jointures	32,062.14		32,062.14
14 Other Tuition Not Included Elsewhere In This Section			
Section 2 Total	\$2,656,537.60	\$2,160,286.66	\$4,816,824.26

1 . Student Transportation Services for Educational Field Trips

2 . Student Transportation Services for Student Activities

22,649.75

3 . Rental of Vehicles for Student Transportation Services

4 . Capital Reserve Funds

Include only district-owned transportation expenditures paid from State or local money.
DO NOT include federal expenditures or payments to contract service providers.
Contracted transportation services should not be recorded on this schedule.

Food Service / Cafeteria Operations Fund (51)

3000 Operation of Non-Instructional Services

100 Personnel Services – Salaries

100 Personnel Services – Salaries

642,173.48
\$642,173.48

Total

200 Personnel Services – Employee Benefits

210 Group Insurance – Contracted Provider
 220 Social Security Contributions
 230 PSERS Retirement Contributions
 270 Group Insurance – Self-Insurance
 280 Other Post-Employment Benefits (OPEB)
 291 Other Retirement Plans

199,772.26
 47,829.40
 220,300.15
 1,158.62
 2,532.00
 (265,380.00)
\$206,212.43

Total Personnel Services – Employee Benefits

400 Purchased Property Services

430 Repairs and Maintenance Services

2,334.00
\$2,334.00

Total Purchased Property Services

600 Supplies

610 General Supplies
 630 Food

59,389.73
 647,171.42
\$706,561.15

Total Supplies

700 Property

740 Depreciation

1,381.30
\$1,381.30

Total Property

800 Other Objects

810 Dues and Fees

304.00

Total Other Objects

\$304.00

Total 3000 Operation of Non-Instructional Services

\$1,558,966.36

Food Service / Cafeteria Operations Fund (51)

	<u>Elementary</u>	<u>Secondary</u>	<u>Federal</u>	<u>Total</u>
3100 Food Services				
100 <u>Personnel Services – Salaries</u>				
100 Personnel Services – Salaries	642,173.48			\$642,173.48
200 <u>Personnel Services – Employee Benefits</u>				
210 Group Insurance – Contracted Provider	199,772.26			199,772.26
220 Social Security Contributions	47,829.40			47,829.40
230 PSERS Retirement Contributions	220,300.15			220,300.15
270 Group Insurance – Self-Insurance	1,158.62			1,158.62
280 Other Post-Employment Benefits (OPEB)	2,532.00			2,532.00
291 Other Retirement Plans	(265,380.00)			(265,380.00)
Total Personnel Services – Employee Benefits				\$206,212.43
400 <u>Purchased Property Services</u>				
430 Repairs and Maintenance Services			2,334.00	2,334.00
Total Purchased Property Services				\$2,334.00
600 <u>Supplies</u>				
610 General Supplies			59,389.73	59,389.73
630 Food			647,171.42	647,171.42
Total Supplies				\$706,561.15
700 <u>Property</u>				
740 Depreciation			1,381.30	1,381.30
Total Property				\$1,381.30
800 <u>Other Objects</u>				
810 Dues and Fees			304.00	304.00
Total Other Objects				\$304.00
Total 3100 Food Services				\$1,558,966.36

	<u>Food Service(51)</u>	<u>Child Care Operations(52)</u>	<u>Other Enterprise(58)</u>	<u>Internal Service(60)</u>	<u>Total</u>
3000 <u>Operation of Non-Instructional Services</u>					
3100 Food Services	1,558,966.36				1,558,966.36
Total Operation of Non-Instructional Services	\$1,558,966.36				\$1,558,966.36
TOTAL ACTUAL EXPENDITURES & OTHER FINANCING USES	\$1,558,966.36				\$1,558,966.36

Fund	School	School Number	Local Personnel	Local Nonpersonnel	State Personnel	State Nonpersonnel	Federal Personnel	Federal Nonpersonnel	Total Explanation
10	Clarke El Ctr	3915	7,905,249.20	1,115,459.38	179,765.57	5,559.76	612,575.60	158,066.17	9,976,675.68
	Lengel MS	5265	7,293,229.91	1,029,101.24	165,848.23	5,129.33	565,150.40	145,828.79	9,204,287.90
	Pottsville Area HS	3924	9,088,000.77	1,282,349.93	206,661.37	6,391.60	704,226.70	181,715.40	11,469,345.77
Total			24,286,479.88	3,426,910.55	552,275.17	17,080.69	1,881,952.70	485,610.36	30,650,309.35

	<u>Nonspecial Education</u>	<u>Special Education</u>
1000 Instruction		
1400 Other Instructional Programs - Elementary / Secondary	231,448.00	134,299.00
Total Instruction	\$231,448.00	\$134,299.00
TOTAL ACTUAL EXPENDITURES & OTHER FINANCING USES	\$231,448.00	\$134,299.00

1000 Instruction

100 Personnel Services - Salaries			
100 Personnel Services - Salaries	72,604.00		28,403.00
Total Personnel Services - Salaries	\$72,604.00		\$28,403.00
200 Personnel Services - Employee Benefits			
210 Group Insurance - Contracted Provider	15,388.00		10,258.00
220 Social Security Contributions	3,217.00		2,145.00
230 PSERS Retirement Contributions	14,886.00		9,924.00
Total Personnel Services - Employee Benefits	\$33,491.00		\$22,327.00
500 Other Purchased Services			
561 Tuition To Other School Districts Within the State	125,353.00		83,569.00
Total Other Purchased Services	\$125,353.00		\$83,569.00
Total 1000 Instruction	\$231,448.00		\$134,299.00

1400 Other Instructional Programs - Elementary / Secondary

100 Personnel Services - Salaries

100 Personnel Services - Salaries	72,604.00	28,403.00
-----------------------------------	-----------	-----------

Total Personnel Services - Salaries	\$72,604.00	\$28,403.00
--------------------------------------------	--------------------	--------------------

200 Personnel Services - Employee Benefits

210 Group Insurance - Contracted Provider	15,388.00	10,258.00
-------------------------------------------	-----------	-----------

220 Social Security Contributions	3,217.00	2,145.00
-----------------------------------	----------	----------

230 PSERS Retirement Contributions	14,886.00	9,924.00
------------------------------------	-----------	----------

Total Personnel Services - Employee Benefits	\$33,491.00	\$22,327.00
-----------------------------------------------------	--------------------	--------------------

500 Other Purchased Services

561 Tuition To Other School Districts Within the State	125,353.00	83,569.00
--------------------------------------------------------	------------	-----------

Total Other Purchased Services	\$125,353.00	\$83,569.00
---------------------------------------	---------------------	--------------------

Total 1400 Other Instructional Programs - Elementary / Secondary

	\$231,448.00	\$134,299.00
--	---------------------	---------------------

	<u>Nonspecial Education</u>	<u>Special Education</u>
1440 Alternative Regular Education Programs		
100 Personnel Services - Salaries		
100 Personnel Services - Salaries	72,604.00	28,403.00
Total Personnel Services - Salaries	\$72,604.00	\$28,403.00
200 Personnel Services - Employee Benefits		
210 Group Insurance - Contracted Provider	15,388.00	10,258.00
220 Social Security Contributions	3,217.00	2,145.00
230 PSERS Retirement Contributions	14,886.00	9,924.00
Total Personnel Services - Employee Benefits	\$33,491.00	\$22,327.00
500 Other Purchased Services		
561 Tuition To Other School Districts Within the State	125,353.00	83,569.00
Total Other Purchased Services	\$125,353.00	\$83,569.00
Total 1440 Alternative Regular Education Programs	\$231,448.00	\$134,299.00

1441 Adjudicated / Court-Placed Programs

100 Personnel Services - Salaries

	<u>Nonspecial Education</u>	<u>Special Education</u>
100 Personnel Services - Salaries	72,604.00	28,403.00
Total Personnel Services - Salaries	\$72,604.00	\$28,403.00

200 Personnel Services - Employee Benefits

210 Group Insurance - Contracted P Provider	15,388.00	10,258.00
220 Social Security Contributions	3,217.00	2,145.00
230 PSERS Retirement Contributions	14,886.00	9,924.00
Total Personnel Services - Employee Benefits	\$33,491.00	\$22,327.00

500 Other Purchased Services

561 Tuition To Other School Districts Within the State	125,353.00	83,569.00
Total Other Purchased Services	\$125,353.00	\$83,569.00

Total 1441 Adjudicated / Court-Placed Programs

	\$231,448.00	\$134,299.00
--	---------------------	---------------------

	<u>Nonspecial Education</u>	<u>Special Education</u>
6000 Revenue from Local Sources		
Total Revenue from Local Sources	\$84,684	\$56,456
Total	\$84,684	\$56,456
TOTAL REVENUES	\$84,684	\$56,456

6000 Revenue from Local Sources

6944 Receipts from Other LEAs in Pennsylvania - Education

	<u>Nonspecial Education</u>	<u>Special Education</u>
	84,684	56,456
Total Revenue from Local Sources	\$84,684	\$56,456
TOTAL	\$84,684	\$56,456
TOTAL REVENUES	\$84,684	\$56,456