

# Gower School District 62

## Expected Reopening Plan for the 2021-22 School Year; July 15, 2021

*The following slides represent our current reopening plan. It is subject to change based on the ongoing assessment of local health conditions and/or changes to public health guidance. Adding or removing prevention strategies may occur as part of our continual effort to maintain a safe learning environment for our students, staff, and community.*

**“We want the pandemic to be over and life back to normal. We want you all to feel safe at work, at home, and in your community. We all play a part in this effort, and you are key.”**

**- [IL Dept. of Public Health](#) - 4-8-21**





# Opening the 2021-22 School Year



This presentation provides an overview of our current plan to open the 2021-22 school year. This plan is aligned to the [latest CDC guidelines for schools](#) and **it is subject to change**. Gower School District was ready to open our schools last year, for all students, without delay. We kept them open, safely, the entire year, while serving as a model and resource for others. We are ready to do the exact same thing again this year; only now under local conditions that, as of today, are much improved and with the benefit of the hard-earned experience in maintaining a safe learning environment in the midst of a pandemic.

This does not mean that local conditions will remain unchanged. **And it is important to recognize that the elements of this plan may need to change as well.** In fact, we should expect them to. Variants, childhood vaccines, and other factors may impact public health guidance and our response to them. We know how important it is to have a clear plan, and to be transparent about the process of building one. But we know that it is even more important to remain flexible and fully ready to adapt to changing conditions and that is what we are prepared to do; Plan-Do-Check-Act!

We look forward to the upcoming school year and we will be ready, again, to open our doors for the first day of school on Friday, August 20th. - Dr. Victor Simon, Superintendent of Schools

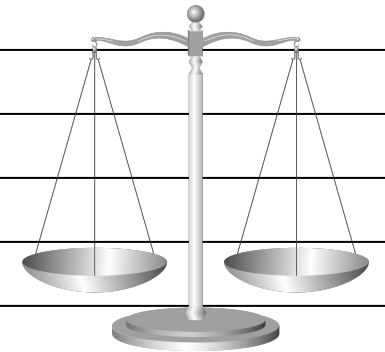
*Remember, Success is 'Doing the best you can, where you are, with what you have...'*



# Reopening Plan: Executive Summary



CDC Prevention Strategies	Gower 62 Reopening Plan
Promoting Vaccination	Vaccines will continue to be promoted and Gower will work to host clinics as needed
Consistent and Correct Mask Use	Masks are strongly encouraged for all unvaccinated individuals but they are not required as long as local health conditions remain favorable (e.g. Local Transmission, Positivity Rate, New Cases)
Physical Distancing	Physical spacing will be maintained at 3'. Lunchroom spaces will be arranged at 3'. Parents can request 6' spacing for their child during lunch and schools will work to accommodate
Screening Testing to Promptly Identify Cases, Clusters, and Outbreaks	Screening testing will continue and weekly participation rates of at least 10% for unvaccinated individuals will be needed to allow for a mask recommendation and not a requirement. Weekly testing is strongly encouraged for all unvaccinated individuals that choose not to wear a mask.
Ventilation	Individual HEPA air purifiers will remain in all classroom settings and MERV-13 rated filters are maintained
Handwashing and Respiratory Etiquette	This practice will continue as expected
Staying Home When Sick and Getting Tested	This practice will continue as expected
Contact Tracing with Isolation and Quarantine	This practice will continue as expected
Cleaning and Disinfection	This practice will continue as expected



***Since vaccination against COVID-19 is recognized as the best, long-term prevention strategy by the CDC, and most of the elementary student population is not yet eligible to receive a vaccine, then it will be the combination and balance of layered prevention strategies and local conditions that will ultimately be used to maximize in-person learning while maintaining a safe learning environment, limiting transmission, and preventing outbreaks.***



# Opening the 2021-22 School Year



We understand that our current plan may bring about clarity and relief for some, but can also bring about angst and concern for others. It may be helpful for parents to think of this plan as what we plan to do if school were to open next week. It doesn't. Our plan is dependent upon local health conditions and subject to change. Keep in mind that the following slides are designed to clarify *'What we know now'* in terms of the most recent [CDC guidelines](#) which have been fully adopted by our state and county agencies. The guidelines emphasize the importance of local conditions and decision making. School districts are encouraged to monitor community transmission, vaccination coverage, screening testing availability, and occurrence of outbreaks to guide decisions on the level of layered prevention strategies.

After reviewing this presentation, feel free to join one of our **Question & Answer Webinars** scheduled for:

- Monday, July 19, 2021 from 12:00 - 1:30 p.m. ([use this link to join](#)) and again on
- Monday, July 19, 2021 from 6:00 - 7:30 p.m. ([use this link to join](#))

Any Questions or concerns you have in the meantime can be directed to Dr. Victor Simon, Superintendent of Schools, [vsimon@gower62.com](mailto:vsimon@gower62.com) or 630-286-4929

School specific questions or concerns may also be sent to: Ms. Gina Rodewald, Gower West Principal, [grodewald@gower62.com](mailto:grodewald@gower62.com), or 630-286-4925; or Ms. Tracy Murphy, Gower Middle Principal, [tmurphy@gower62.com](mailto:tmurphy@gower62.com), or 630-286-4933



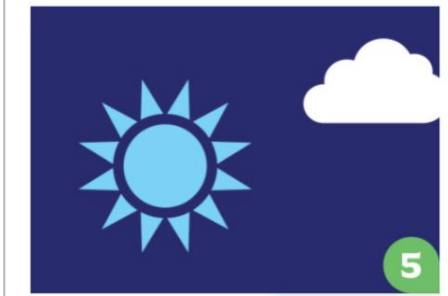


# What we know now...

## PHASE 5: ILLINOIS RESTORED

### WHAT THIS PHASE LOOKS LIKE

Testing, tracing and treatment are widely available throughout the state. Either a vaccine is developed to prevent additional spread of COVID-19, a treatment option is readily available that ensures health care capacity is no longer a concern, or there are no new cases over a sustained period. All sectors of the economy reopen with new health and hygiene practices permanently in place. Large gatherings of all sizes can resume. Public health experts focus on lessons learned and building out the public health infrastructure needed to meet and overcome future challenges. Health care equity is made a priority to improve health outcomes and ensure vulnerable communities receive the quality care they deserve.



STATE OF ILLINOIS  
Coronavirus (COVID-19) Response

### WHAT'S OPEN?

- All sectors of the economy reopen with businesses, schools, and recreation resuming normal operations with new safety guidance and procedures.
- Conventions, festivals, and large events can take place.

- On May 5, 2020, Governor JB Pritzker announced the [Restore Illinois](#) plan, which lays out a public health approach to safely reopen our state.
- Each Region in the state entered [Phase 5](#) on Friday, June 11, 2021 and remains firmly in Phase 5 at the time of this publication.
- **Important:** [Phase 5 Guidance for Businesses and Venues](#) relaxes face covering and social distancing restrictions in nearly all settings but this **DOES NOT** currently apply to schools.
- According to the most recent state guidelines, schools, daycare settings, and educational institutions are expected to follow separate guidance issued by the Illinois State Board of Education, the Illinois Department of Public Health.



# What we know now...



Dear Colleagues:

I am very happy to announce that the Illinois Department of Public Health (IDPH) has fully adopted the [updated guidance for schools issued today by the Centers for Disease Control and Prevention \(CDC\)](#), which is based on the latest scientific information about COVID-19. All Illinois schools, both public and nonpublic, will use the CDC guidance released today to start the 2021-22 school year. You can read more in [IDPH's press release](#).

- The July 9th announcement from the Illinois State Superintendent of Schools, clarifies that IDPH for guidance fully aligns to the most [recent CDC guidelines](#) (also published on July 9<sup>th</sup>) and that all schools in Illinois will use the CDC guidance to start the 2021-22 school year. Read the [full IDPH press release here](#).
- The [CDC emphasizes](#) the need for localities to monitor community transmission, vaccination coverage, screening testing, and occurrence of outbreaks to guide decisions on the level of layered prevention strategies utilized.
- The new [CDC guidelines](#) align to the [Guidelines for Fully Vaccinated People](#).
- Gower's strong experience with on-site testing, physical spacing, cleaning and disinfecting, and contact tracing allows for more relaxed prevention strategies in a responsible manner when [local conditions](#) are favorable.



# What we know now...

“The CDC is right: vaccination is the best preventive strategy. As school board members, parents, teachers and superintendents plan for a return to in-person learning in the fall, we strongly encourage those who are not vaccinated to continue to mask. IDPH is proud to fully adopt school guidance issued by CDC, which is based on the latest scientific information about COVID-19.” - [IDPH Press Release](#), 7-9-21

Major elements of the updated guidance include:

- Masks should be worn indoors by all individuals (age 2 and older) who are not fully vaccinated.
- CDC recommends schools maintain at least 3 feet of physical distance between students within classrooms, combined with indoor mask wearing by people who are not fully vaccinated, to reduce transmission risk. When it is not possible to maintain a physical distance of at least 3 feet, such as when schools cannot fully re-open while maintaining these distances, it is especially important to layer multiple other prevention strategies, such as indoor masking.
- Screening testing, ventilation, handwashing and respiratory etiquette, staying home when sick and getting tested, contact tracing in combination with quarantine and isolation, and cleaning and disinfection are also important layers of prevention to keep schools safe.
- Many schools serve children under the age of 12 who are not eligible for vaccination at this time. Therefore, this guidance emphasizes implementing layered prevention strategies (masking, distancing, testing) to protect people who are not fully vaccinated.



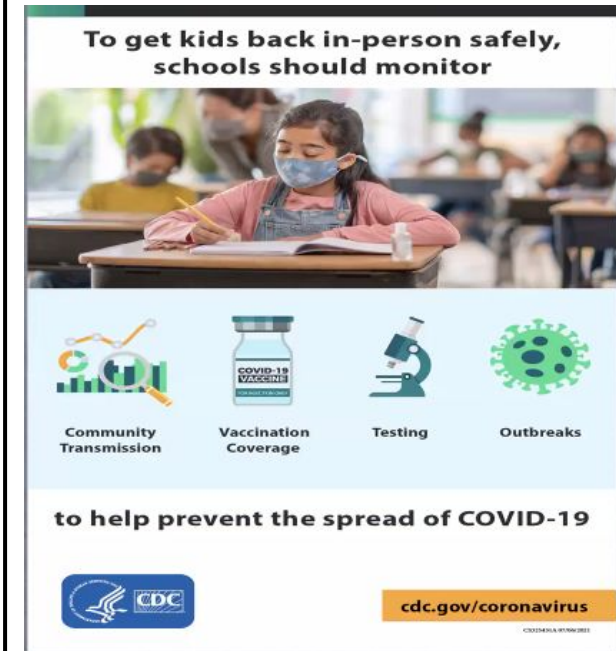
# What we know now...



## Factors to Consider when using CDC In-Person Learning Guidelines and Prevention Strategies

Together with local public health officials, school administrators should consider multiple factors when they make decisions about implementing layered prevention strategies against COVID-19. Since schools typically serve their surrounding communities, decisions should be based on the school population, families and students served, as well as their communities. The primary factors to consider include:

- Level of [community transmission](#) of COVID-19.
- [COVID-19 vaccination coverage](#) in the community and among students, teachers, and staff.
- Use of a frequent SARS-CoV-2 screening testing program for students, teachers, and staff who are not fully vaccinated. Testing provides an important layer of prevention, particularly in areas with substantial to high community transmission levels.
- COVID-19 outbreaks or increasing trends in the school or surrounding community.
- Ages of children served by K-12 schools and the associated social and behavioral factors that may affect risk of transmission and the feasibility of different prevention strategies.







# What we know now...

## Current CDC In-Person Learning Guidelines and Prevention Strategies

According to the updated CDC guidance:

Prevention Strategies include -

- [Promoting vaccination](#)
- [Consistent and correct mask use](#)
- [Physical distancing](#)
- [Screening testing to promptly identify cases, clusters, and outbreaks](#)
- [Ventilation](#)
- [Handwashing](#) and [respiratory etiquette](#)
- Staying home when sick and getting tested
- [Contact tracing](#), in combination with [isolation](#) and [quarantine](#)
- [Cleaning and disinfection](#)

*The guidance emphasizes implementing layered prevention strategies (e.g., using multiple prevention strategies together) to protect people who are not fully vaccinated, including students, teachers, staff, and other members of their households. The guidance is intended to help administrators select appropriate, layered prevention strategies and understand how to safely transition learning environments out of COVID-19 pandemic precautions as community transmission of COVID-19 reaches low levels or stops.*



# Gower's Response to the Prevention Strategies



- The following slides provide details around the current Gower School District plan for opening the 2021-22 school year as developed by the Gower Return to School Workgroup in response to the new guidelines from public health agencies
- The enclosed plan represents a response to the most current guidelines and represents what school would like like if it were to begin on July 20<sup>th</sup>. **It is subject to change**
  - We expect updated guidelines and further clarity from state agencies in the coming weeks
  - Local health conditions/COVID-19 data may change and result in more layers of prevention being added, or in some cases, removed (e.g. physical spacing)
- The Gower Return to School Workgroup is led by the district superintendent and made up of school administrators, teachers, staff, and, of course, the elected Board of Education members who represent our parent community
- Feel free to join one of our **Question & Answer Webinars** scheduled for:
  - Monday, July 19, 2021 from 12:00 - 1:30 p.m. ([use this link to join](#)) and again on
  - Monday, July 19, 2021 from 6:00 - 7:30 p.m. ([use this link to join](#))
- We plan to send our next Gower School District [Community Update](#) on **August 5<sup>th</sup>** - along with our annual Welcome Back mailing - to share final reopening plans
- Continue to reach out to our school or district offices with any questions you may have



# Promoting Vaccination

- We do not expect a requirement for the [COVID-19 vaccine](#) for Gower Staff or Students
- Gower has surpassed a 95% threshold for fully vaccinated staff and we do expect that to increase
  - Unvaccinated staff are required to participate in screening testing when transmission rates in our county, or their respective home county are moderate or higher, and they opt to not wear a mask
- We will continue to encourage families to **let your [school nurse\(s\)](#) know that your child is fully vaccinated**. They will gladly include this important information in your child's immunization record
  - Vaccination status has current implications for close contact determination and the need to quarantine. Knowing this information ahead of time only helps us respond more quickly
- We will continue to encourage families to work with their primary care physician to make a decision regarding the vaccine and will also continue to provide resources to help families schedule an appointment if they choose to do so
  - [DuPage County Health Department Vaccine Information and Registration](#)
  - [IDPH COVID-19 Vaccine Resources](#)
  - [Vaccine Spotter](#) or [ZocDoc](#) (search for Metro Infectious Disease Consultants (MIDC) Burr Ridge)
- We do expect that a childhood vaccine against COVID-19 will be made available to our students early in the school year and have partnerships with local pharmacies and providers to ensure access
  - We will provide options for those under 12 to receive a COVID vaccine locally once available



# Consistent and Correct Mask use



- **Masks ARE REQUIRED on school buses** regardless of school mask policy and vaccination status. This is a [CDC Order](#) and will remain in place until the mandate is amended.
- **Masks are strongly encouraged - but NOT required** at the start of the school year for all individuals who are not fully vaccinated as long as certain local conditions are met.
  1. The Level of Weekly Transmission or Positivity Rate for our [local area](#) remain [Low or Moderate](#)
  2. The Grade Level (PK-5) or Grade Cluster (6-8) maintains an on-site, voluntary [COVID-19 screening testing](#) participation rate of at least 10% per week in [Moderate](#) conditions
  3. There have not been 2 new positive cases in a 10-day period in any given classroom setting, and no more than 3 new positive cases in a 10-day period in a grade level
- **Weekly Testing is strongly encouraged for unvaccinated students who do not regularly mask**
- Parents should be mindful that **masking may provide an exemption from a mandatory quarantine** if it is determined that their child is a close contact to a positive case
- Using a layered approach to masking increases flexibility and parent choice and is possible given the current data in [our area](#) and the additional prevention strategies in place (adult vaccination rate, physical spacing, on-site diagnostic and screening testing, and required bi-weekly screening for unvaccinated employees that opt not to wear a mask) - **Conditions may change**





# A Layered Mitigation Approach



It is important to note that local conditions may change and result in a temporary face mask requirement. **This phased-in, adaptive approach to a face mask requirement is based on the following conditions:**

1. The Level of Weekly Transmission or Positivity Rate for our [local area](#) remain [Low or Moderate](#)
  - a. **or ALL\* staff and students in Gower School District will be required to wear masks for a period of 10 Days, pending the improvement in local conditions**
2. The Grade Level (PK-5) or Grade Cluster (6-8) maintains an on-site, voluntary [COVID-19 screening testing](#) participation rate of at least 10% per week in [Moderate](#) conditions
  - a. **or ALL\* staff and students in the associated Grade Level(s) will be required to wear masks for a period of 10 Days, pending the improvement in local conditions**
3. There have not been 2 new positive cases in a 10-day period in any given classroom setting, and no more than 3 new positive cases in a 10-day period in a grade level (both values are less than that of an outbreak status of 5 epidemiologically connected cases)
  - a. **or ALL\* staff and students in the associated Classroom/Grade Level(s) will be required to wear masks for a period of 10 Days, pending the improvement in local conditions**

*\*Medical exemptions from wearing a face mask will be considered on a case by case basis*



# A Layered Mitigation Approach



- The current conditions, along with our other prevention strategies allow for an increase in flexibility and parent choice as we start the school year - **Conditions may change**
- Parents are in the best position to make a decision regarding their child's health
- Parents are encouraged to complete the [Parent Preference Form](#) to clarify the expectation they have for their child(ren) regarding face masks and to help us prepare for the start of the year
  - Parent expectations will be recorded and shared with classroom Teachers, who in turn, will respectfully remind students should they fall short of meeting these expectations
  - Parents will be contacted directly, as needed, or after repeat occurrences
- Medical exemptions from wearing a face mask, should the local conditions result in a temporary mask requirement, will be considered on a case by case basis and should be submitted as soon as possible (*Parents can contact the school nurse or the district office directly*)
- We will all need to be supportive and respectful of those who are wearing a face mask and those who are not as individual circumstances, decisions, and preferences differ.
- By each of us following the prevention strategies - both in and out of the school setting - we can take the steps necessary to keep everyone safe and reduce COVID infections and transmission to allow for our flexible model to continue.



# Targeted Mask Requirement Thresholds & Metrics

Indicator - If the two indicators suggest different transmission levels, the higher level is selected	Low Transmission Blue	Moderate Transmission Yellow	Substantial Transmission Orange	High Transmission Red
Total new cases per 100,000 persons in the past 7 days	0-9.99	10-49.99	50-99.99	≥100
Percentage of NAATs <sup>1</sup> that are positive during the past 7 days	0-4.99%	5-7.99%	8-9.99%	≥10.0%

## [Weekly Community Transmission and Positivity Levels - CDC](#)

**Illinois COVID Data by Zip Code**  
Last updated: 7/13/2021

Select Zip Code(s):  
(You may select multiple. Zips with <10 cases are not shown.)

✓ 60527 - WILLOWBROOK

Selected Zip Code(s):

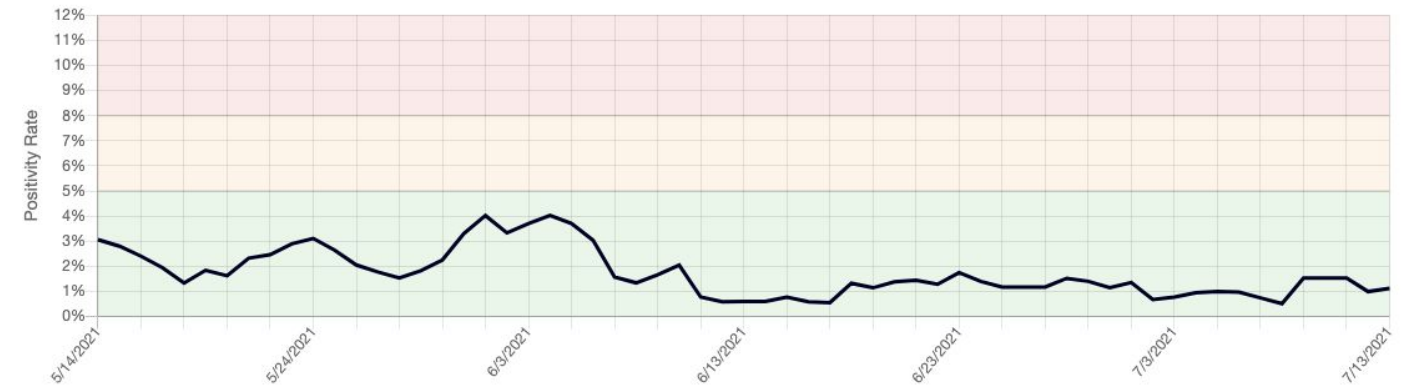
60527

Clear All

Save Search
Show Data

Saved Search Title

Rolling Average 7-Day COVID Positivity Rate  
(Hover over the line to see the rate for a specific day)



[Illinois COVID-19 Data by Zip Code \(Northwestern\)](#)

[DuPage County COVID-19 Data Dashboard](#)

[IDPH County Level Data - DuPage](#)

Local data is continuously monitored for weekly trends and used in the context of all available data sources to make recommendations for adjustments or continuation of practices. Additionally, school and district administrators monitor data on a daily basis, and often updated hourly, as on-site testing data, individual student symptom reporting, contact tracing, and ever-changing and health conditions at the individual level drive our decision-making and to help ensure that 'Children at their Best!' is carried out more accurately as 'Your child at their best!'



# Physical Distancing & Ventilation



- Our classroom spaces are being arranged to accommodate physical spacing of 3', as much as possible, with an expressed goal of preventing 'close contacts'
  - This is the same approach we took last year; including at the end of the year when we were near full-capacity of our student body
- Our lunchroom spaces will be arranged to follow the CDC guidance for food service by maximizing as much distance as possible while eating
  - Our lunchroom spaces can generally accommodate 3' of physical spacing, but we can rearrange to accommodate more distancing should public health conditions change
  - We will work to make arrangements for students uncomfortable in such a setting to ensure 6' physical spacing while they eat lunch
- We will continue to use the individual HEPA air purifiers in each of our classrooms
- We will continue to use the highest MERV-rating filters for our HVAC system in perpetuity. We have also installed UV filters in each of our nurses offices and plan to do the same in our student bathrooms. The midwest offers lots of opportunity to keep our classroom windows open for fresh air too.





# Screening Testing



We expect our on-site COVID-19 Diagnostic and Screening Testing Program to continue in accordance with [CDC Testing Guidelines](#). In fact, we are expanding our diagnostic screening to include Flu A, Flu B, and Strep Throat for the 2021-22 school year. Gower School District was a leader in the COVID-19 testing space, presenting for regional, state and national agencies including the US Department of Education and the CDC. We will continue to work with others interested in adding this important measure.

- [Diagnostic Testing](#) is offered, not required to any student exhibiting COVID-like symptoms
- [Screening Testing](#) will be required for participants in sports/after school clubs through at least the first semester (Exempt: individuals vaccinated or those that have tested positive in the last 3 months)
- [General Screening Testing](#) is available but not required in Gower. It is important to recognize that this strategy (e.g. 10% of unvaccinated population screened weekly) may be used in a comprehensive risk assessment to allow for other mitigations to be removed (physical spacing, face masks for example)
  - Gower Administrators are working with IDPH and ISBE officials to serve as a potential pilot for such a prevention-based approach (Test-to-Stay in lieu of at-home quarantine, for example)
- Required Screening Testing for unvaccinated staff that choose not to wear a mask in moderate or higher levels of community transmission in DuPage or the home county of the staff member (twice per week)



# Hygiene, Respiratory Etiquette, and Symptom Screening

- The handwashing and respiratory etiquette practices used during the 2020-21 school year proved to be effective and will continue in the 2021-22 school year
- We are not using the Self-Certification Card to start the school year. Instead, the pre-pandemic practice - outlined in our Parent-Student Handbook - will be utilized. If your child is sick, has a fever, or is exhibiting flu-like symptoms, keep them home. Student who present symptoms during the school day will be sent to the School Nurse - as they have always been - and a parent will be contacted to determine if any on-site testing will be conducted (COVID, Flu, Strep Throat).

## Contact Tracing, Quarantine, & Cleaning

- Gower staff have as much or more experience with contact tracing than anyone in the state of Illinois and will continue in collaboration with the local health department
- Our on-site testing gives us the ability to reduce the quarantine period to 10 days and potentially even 7 days pending approval from the local health department. In fact, we are working to receive approval for a 'Test to Stay' approach where, as long as the student remains symptom free and tests negative every other day through Day 8 of exposure, there would be no at-home quarantine.
- The cleaning schedule and practices used during the 2020-21 school year proved to be effective and will continue in the 2021-22 school year



# What we know now...

## Remote Education Program

1. Gower School District has made a Remote Educational Program available to individual students/families [by request](#) in alignment with [Illinois School Code](#).
2. The Remote Education Program in Gower **IS NOT** the same optional remote program available to all students, as needed, in response to the COVID-19 pandemic in 2020-21.
  - a. The ability for students to 'Zoom-in' or join a 'Google Meet' in an *on-demand* fashion was provided in direct response to the public health crisis and as a way to maintain continuity in education as public health conditions remained unclear throughout the school year
  - b. [Public health conditions](#) have improved dramatically and are expected to continue to improve as a COVID-19 vaccine is made available to children under 12. Therefore, a crisis-response to provide an *on-demand* remote option is no longer recommended; especially given that approximately 97% of our students transitioned back to in-person learning by the end of the school year or during summer school
3. The Remote Education Program is designed for long-term requests (e.g. greater than 3 weeks) with instruction provided by a third party (e.g. Edmentum or Illinois Virtual Schools), with online Illinois certified teachers (NOT Gower Teachers) and a Gower staff member assigned to the student to check in weekly and monitor progress in the third-party platform
4. A formal request is required with approval granted on a case-by-case basis
  - a. **Parents should submit [requests for the Remote Education Program](#) as soon as possible, but no later than August 9th to ensure appropriate planning for the start of the school year (form available on our website [here](#))**
5. Short-term requests for remote learning (e.g. less than 3 weeks, quarantine) will generally not be granted as such absences can be addressed through coordination with the classroom teacher(s) asynchronously with synchronous opportunities scheduled at the teacher's discretion and based on the individual student's need/performance



# What we know now...



- We know that the debates about ‘masks’, ‘COVID-19 vaccines’, as well as other topics related to public education are being carried out across social media platforms and these topics can become polarizing.
  - We continue to encourage the Gower Community to contact school or district officials directly to address any questions or concerns you may have and to ensure that you have direct-source information
- Gower operated according to the principle of local decision making throughout the entire 2020-21 school year and expects to do the same moving forward - continuing to advocate for local flexibility across all agencies involved
  - This stance of local decision making is in full alignment with the most recent [CDC Guidance for COVID-19 Prevention in Kindergarten \(K\)-12 Schools](#)
  - Our work throughout the pandemic has prepared us to begin removing prevention strategies, in a responsible, evidence-based manner
  - We have the experience of hosting full, in-person learning during the height of the COVID-19 pandemic and fully prepared to add layered mitigation strategies back in place as local conditions dictate







# In Closing...

- We know that we had a successful 2020-21 school year in terms of local decision making within the guidelines, opening on time, remaining open under public health conditions that were far worse than today, and building capacity in the important areas of symptom screening, diagnostic and screening testing, close contact identification and subsequent contact tracing, improved air filtration in the form of HVAC system filters and classroom based HEPA air purifier units, organizing and hosting community-based vaccination clinics, and more frequent cleaning and disinfecting routines.
- We know that our own internal COVID-19 data based on actual on-site testing of hundreds of actual close contacts, is that approximately 2% of close contacts tested positive (all of which had exposure to a positive individual outside of our schools) - *Testing was helpful in Gower*
- We have worked to be in a position - based on the actual experience of remaining fully open throughout the pandemic and and have reached the point of being able to remove some of the mitigation strategies previously in place in a responsible manner and follow an evidence-based path back to pre-pandemic conditions for our schools while remaining prepared to add layered mitigation back into a classroom, grade level, or school as needed.
- Such an approach, based on local flexibility and local data is in accordance with the most recent [CDC Guidance](#)



# What's Next...



- Complete the [Parent Preference Form](#) to help us better prepare for the start of the year
- Let your [school nurse\(s\)](#) know that your child is fully vaccinated against COVID-19
- After reviewing this presentation, feel free to join one of our **Question & Answer Webinars**:
  - [Use this link to join](#) the Q & A Webinar Session from 12:00 - 1:30 p.m. on July 19, 2021
  - [Use this link to join](#) the Q & A Webinar Session from 6:00 - 7:30 p.m. on July 19, 2021
- The Board of Education will meet on July 20, 2021 at 7:00 p.m. in the Gower West gym to review feedback collected and to discuss any updated guidelines/adjustments
- The [IDPH/ISBE FAQ](#) has not been updated at this time. Changes in this document may impact our current plan as can changes in local health conditions. Flexibility will be a key!
- We plan to send our next Gower School District [Community Update](#) on **August 5<sup>th</sup>** - along with our annual Welcome Back mailing - to share final reopening plans
- We will continue to watch local health data trends and will share information for community screening options as the school year approaches
- Continue to reach out to our school or district offices with any questions you may have
- Recognize that current public health conditions may change and require adjustments to our plan - A common theme throughout the presentation is that this is **subject to change!**