

Demonstrating Increased or Improved Services

2016-17 Local Control & Accountability Plan



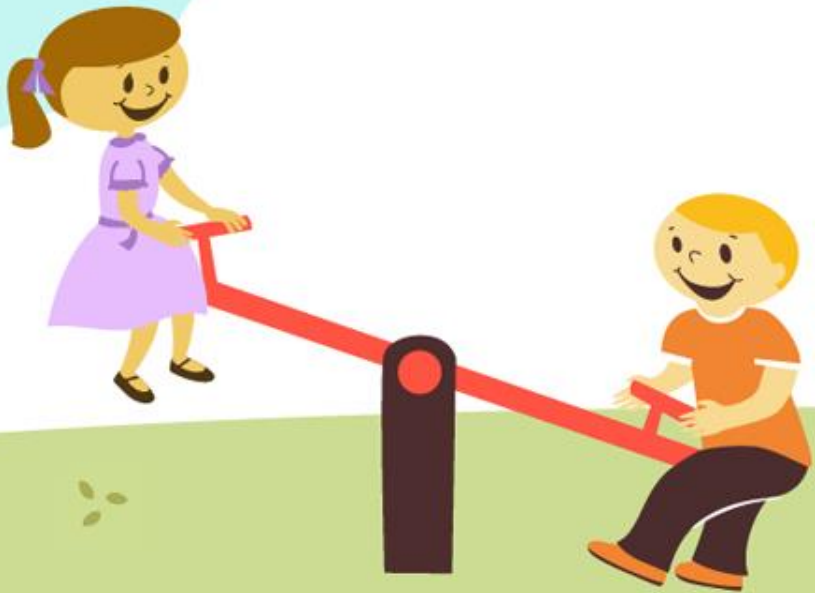
Agenda

- Introductions
- Current conversations around the MPP and Supplemental/Concentration grant expenditures
- Completing the LCAP for supplemental & concentration grant expenditures
- Completing the LCAP for the MPP
- Lunch
- Table-top Exercise



Welcome

Introductions



April 15, 2016

Advocacy groups urge state board to tighten LCAP requirements

By John Fensterwald, *EdSource Today*

In separate analyses, three nonprofit student advocacy groups have concluded that most school districts' explanations of their priorities and annual spending under the state's new funding law are confusing, inadequate and sometimes contrary to the law's purpose of directing more resources to underserved students [Read more.](#)



State Board of Education activity

AGENDA ITEMS DAY 2 – March 10, 2016

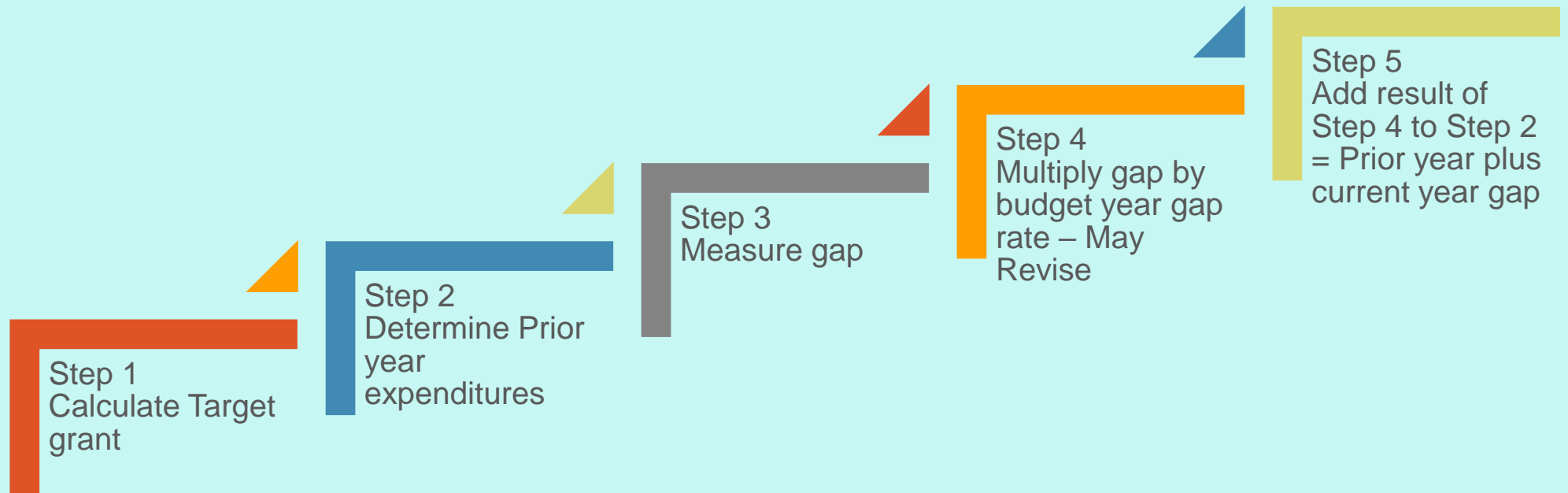
Item 23 (DOC)

Subject: Developing a New Accountability System: Update on the Local Control Funding Formula, including, but not limited to, the Local Control and Accountability Plan and Annual Update Template; the Evaluation Rubrics; Discussion on the Every Student Succeeds Act State Plan; Introduction of the California Practitioners Advisory Group; and Revised Timeline for Transitioning to the New Accountability and Continuous Improvement System.

Type of Action: Action, Information



Calculating Supplemental & Concentration grant award during implementation of the LCFF





Don't create a cliff:
Review the gap
between prior year
supplemental &
concentration grant
expenditures and
Target grant
amounts




Use the LCFF Calculator to determine grant

		2015-16	2016-17**	2017-18**	2018-19**	2019-20**
15496(a)(1)	1. LCFF Target Supplemental & Concentration Grant Funding <i>from Calculator tab</i>	575,091	556,566	549,981	564,551	579,905
15496(a)(2)	2. Prior Year (estimated) Expenditures for Unduplicated Pupils above what was spent on services for all pupils	250,000	418,950	486,492	515,278	518,308
	Prior Year EIA expenditures 2014-15 py exp (2013-14 exp) must >= 2012-13 EIA exp					
15496(a)(3)	3. Difference [1] less [2]	325,091	137,616	63,489	49,273	61,597
15496(a)(4)	4. Estimated Additional Supplemental & Concentration Grant Funding [3] * GAP funding rate	168,950	67,542	28,786	3,030	21,072
	GAP funding rate	51.97%	49.08%	45.34%	6.15%	34.21%
15496(a)(5) 15496(a)(8)	5. Estimated Supplemental and Concentration Grant Funding [2] plus [4] (unless [3]<0 then [1]) LCAP Section 3, Part A	418,950	486,492	515,278	518,308	539,380

over services provided for all students in the LCAP year.

EPA LCAP MPP Summary Graphs L



Completing Section 3A of the LCAP

Supplemental & Concentration grant expenditures

Refer to Section 2

- Fully identify where you are using LCFF supplemental and concentration grant funds in Section 2 of the LCAP

Provides connectivity for the reader

- Promotes transparency. Don't double-count expenditures – refer to the fact already included in budget elsewhere



Completing Section 3A of the LCAP Supplemental & Concentration grant expenditures

Refer to Section 2

- Identify in Section 2 if the action/service is provided on a districtwide or schoolwide basis

Provides clarity for the reader

- Provide a justification for the use of these grant funds in this manner
- Describe how such services are principally directed towards, and are effective in, meeting the district's goals for its unduplicated pupils in the state priority areas



Completing Section 3A of the LCAP

Supplemental & Concentration grant expenditures

Districtwide under 55% UPP
Schoolwide under 40% UPP

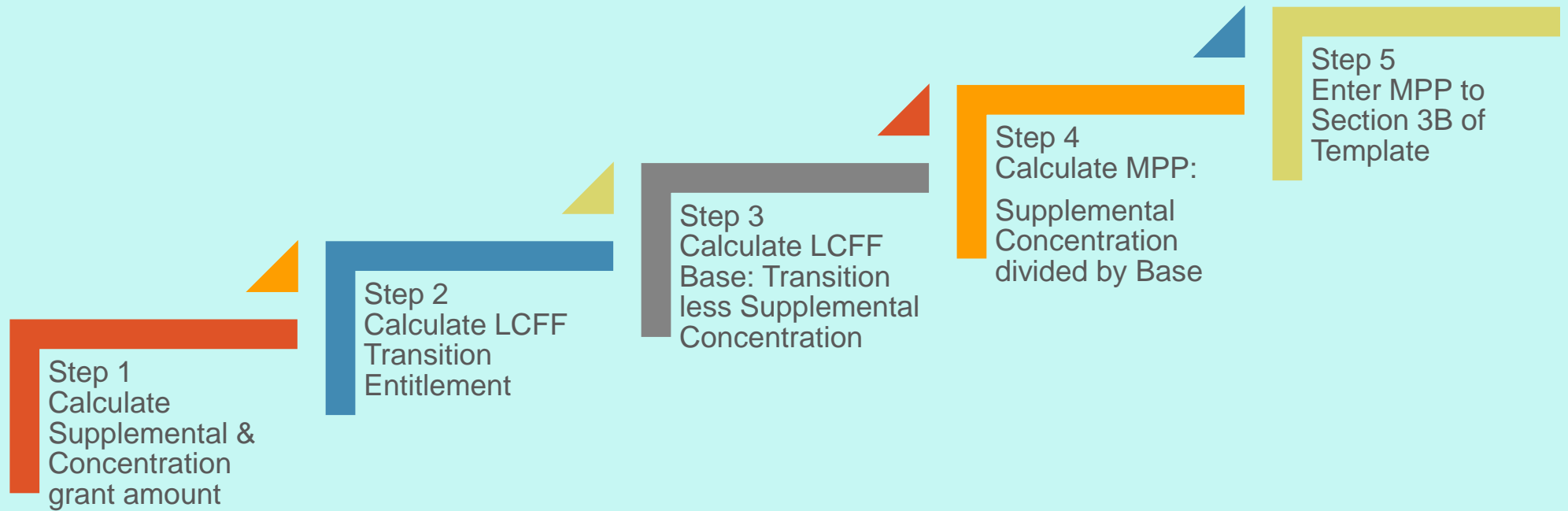
- If districtwide actions are funded with supplemental or concentration grant funds and your district's unduplicated pupil percentage is below 55%
- If schoolwide actions are funded with supplemental concentration and the school has an unduplicated pupil percentage below 40%

Provide Additional Information

- Describe how the services provided are the most effective use of funds to meet the goals for unduplicated pupils in the state and local priority areas
- Provide the basis for the determination, including, but not limited to, any alternatives considered and any supporting research experience, or educational theory

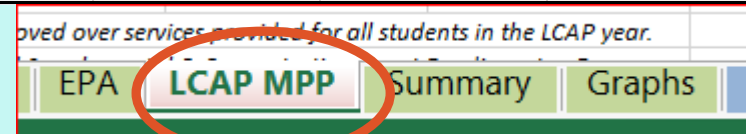


Calculating the MPP

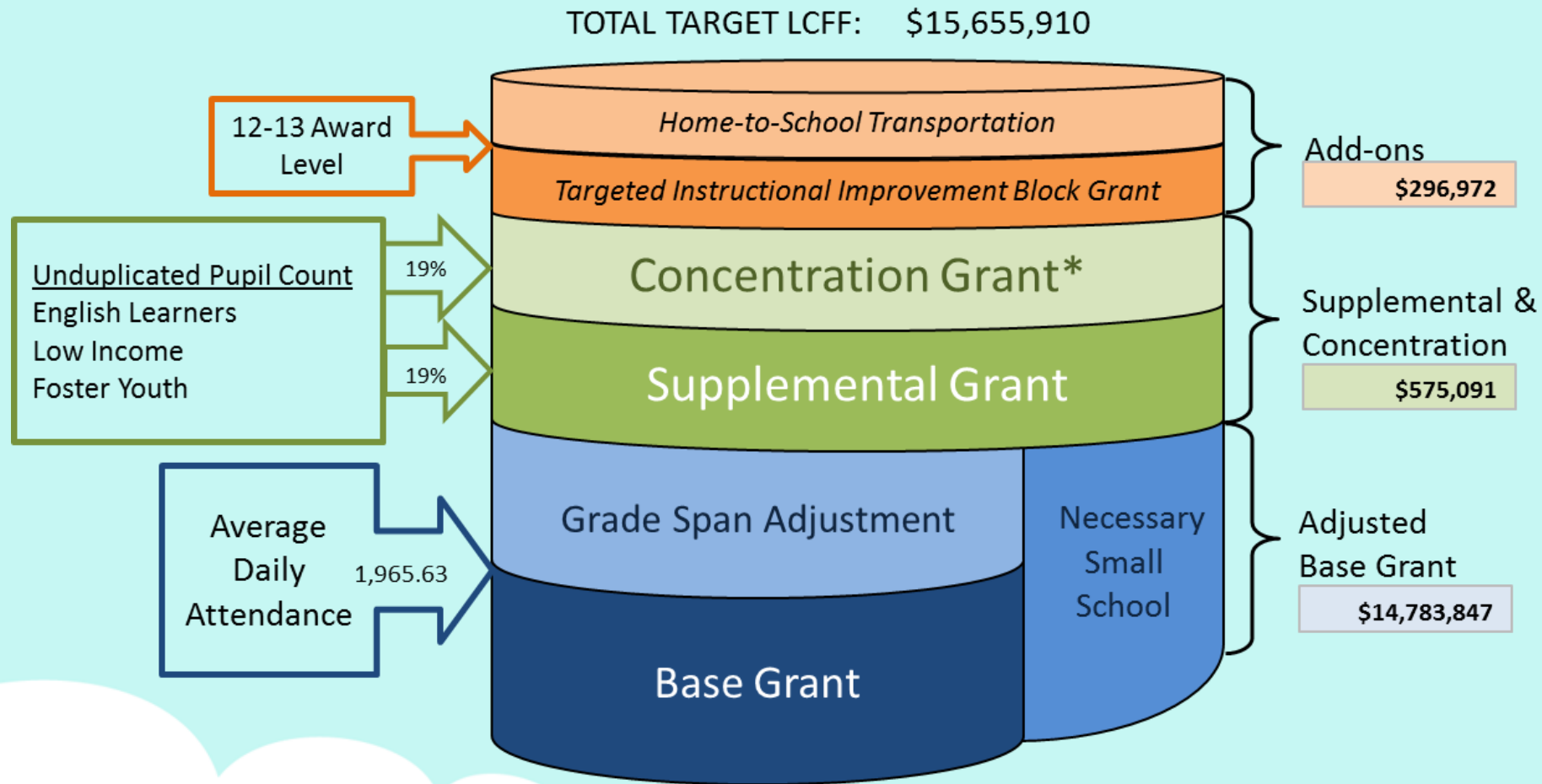


Use the LCFF Calculator to determine the MPP

15496(a)(5) 15496(a)(8)	5.	Estimated Supplemental and Concentration Grant Funding [2] plus [4] (unless [3]<0 then [1]) LCAP Section 3, Part A	418,950	486,492	515,278	518,308	539,380
15496(a)(6)	6.	Base Funding <i>LCFF Phase-In Entitlement less [5], excludes Targeted Instructional Improvement & Transportation</i>	13,607,862	14,225,305	14,745,738	14,811,442	15,265,096
		<i>LCFF Phase-In Entitlement</i>	14,323,784	15,008,769	15,557,988	15,626,722	16,101,448
15496(a)(7) 15496(a)(8)	7/8.	Minimum Proportionality Percentage* [5] / [6] LCAP Section 3, Part B	3.08%	3.42%	3.49%	3.50%	3.53%
*percentage by which services for unduplicated students must be increased or improved over services provided for all students in the LCAP year. If Step 3a <=0, then calculate the minimum proportionality percentage at Estimated Supplemental & Concentration Grant Funding, step 5. **Regulations only require an LEA to demonstrate how it is meeting the proportionality percentage in the LCAP year, not across all three years.							



The MPP is NOT a Maintenance of Effort measurement
Supplemental & Concentration and MPP are measurements against the current year Base



*Unduplicated Pupil Percentage must be above 55%
to receive Concentration Grant funding



What are your BASE EXPENDITURE S?

What it takes to open the doors
and provide all students with an
education



Measure additional support services against base

- Identify the base first

- Identify support services for students that generate supplemental and concentration grant revenues
- Identify which of these support services are funded with LCFF Supplemental and Concentration grant funding





What are the layers of support for:

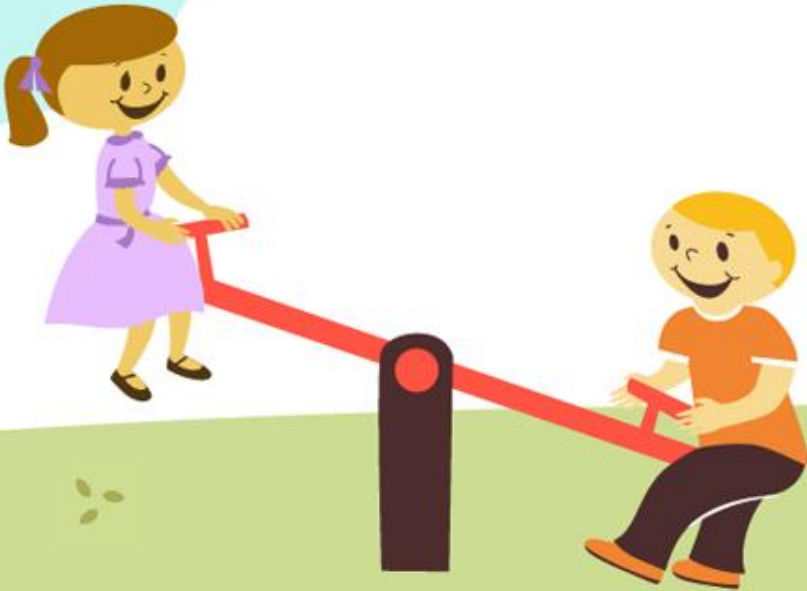
- English Learners?
- Foster Youth?
- Low Income students?
- Students with Special Needs?
- Other locally identified needs?



Measure additional support services against base

Determine Measurement Unit

- Are increased or improved services best measured by FTE?
- By hours of service?
- By cost?
- By device ratio?
- Look at the service and determine how best to measure



Sample MPP calculation

- Base class size ratio in grades 4-8 is 28:1
- District has reduced class size to 22:1 in support of the District's goal #2
- Base FTE to staff at 28:1 25
- Additional FTE to staff at 22:1 4
- 4 divided by 25 = 16% MPP provided

Until you know
your base you
cannot measure
an increase or
improvement



Questions?

Tabletop Exercise

- Review your District's 2015-16 LCAP
- Review Section 2A. Does it clearly identify the Supplemental Concentration grant expenditures and in all ways comply with the spending regulations?
- Review the MPP and determine if it could be expressed more transparently?
- What will you do differently in the 2016-17 LCAP?



Thank you!