

Legend

Cluster Schools

Special Entity/Other Offices

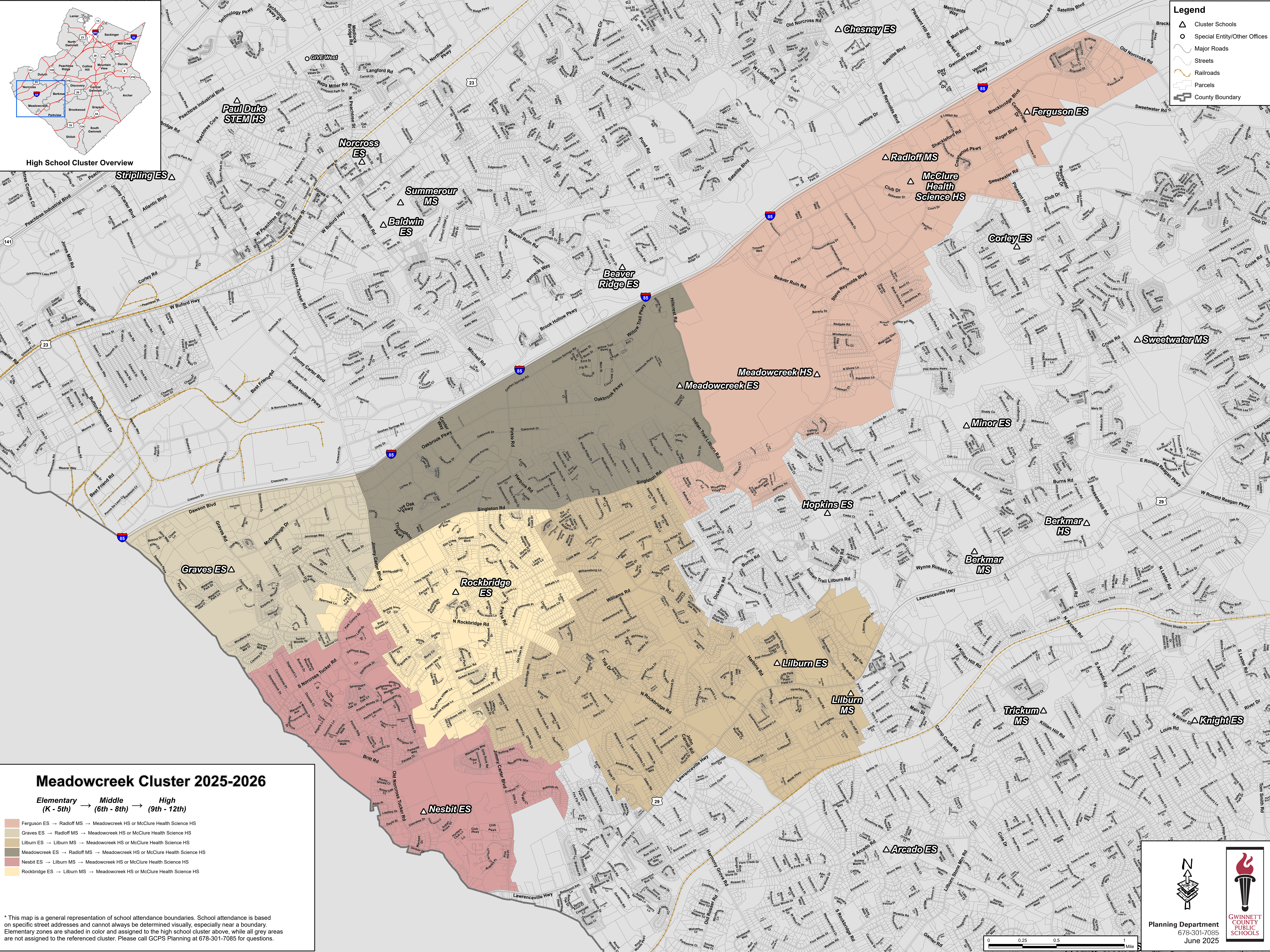
Major Roads

Streets

Railroads

Parcels

County Boundary



Meadowcreek Cluster 2025-2026

Elementary
(K - 5th)

Middle
(6th - 8th)

High
(9th - 12th)

Ferguson ES → Radloff MS → Meadowcreek HS or McClure Health Science HS

Graves ES → Radloff MS → Meadowcreek HS or McClure Health Science HS

Lilburn ES → Lilburn MS → Meadowcreek HS or McClure Health Science HS

Meadowcreek ES → Radloff MS → Meadowcreek HS or McClure Health Science HS

Nesbit ES → Lilburn MS → Meadowcreek HS or McClure Health Science HS

Rockbridge ES → Lilburn MS → Meadowcreek HS or McClure Health Science HS

* This map is a general representation of school attendance boundaries. School attendance is based on specific street addresses and cannot always be determined visually, especially near a boundary. Elementary zones are shaded in color and assigned to the high school cluster above, while all grey areas are not assigned to the referenced cluster. Please call GCPS Planning at 678-301-7085 for questions.

Planning Department
678-301-7085
June 2025