

Community Schools

OUR CHILDREN, OUR CHARGE

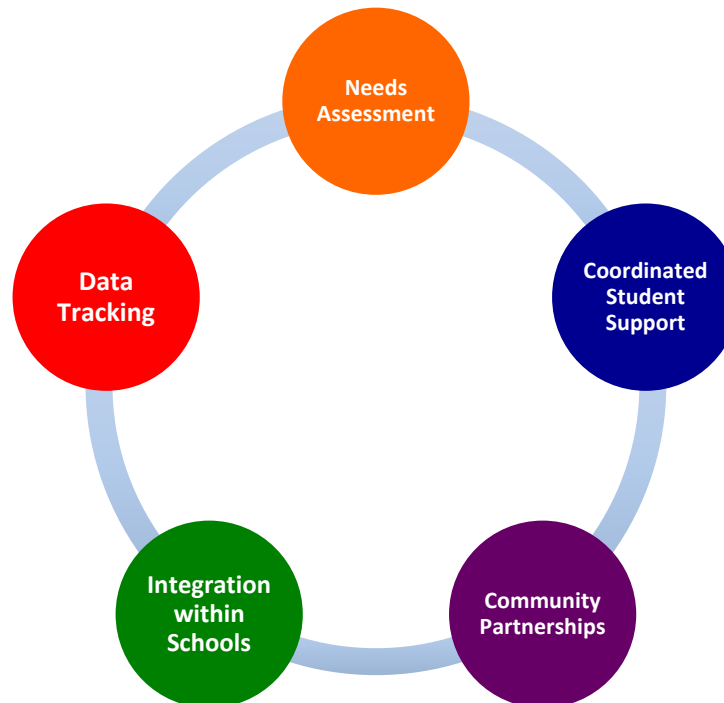
Agenda

- WELCOME!
- Why Community Schools – LouAnn Ross
- What Community Schools Look Like Nationally – LouAnn Ross
- What Implementation Looks Like – Errika Fearbry Jones
- The Application Process – Camara Watkins
- Community Schools Update – LouAnn Ross
- Questions?

What is a Community School?

At their core, Community Schools are effective schools that recognize the importance of meeting nonacademic needs so that students can focus on learning.

Community Schools are a partnership between the District, schools, families, and community resources to holistically support our students.



What is a Community School?

From the PPS Community Schools Policy

- A place and a set of strategic, coordinated and results-focused partnerships among the school and other community resources that promote student achievement, positive conditions for learning and the well-being of families and communities
- Maintains core focus on the children of the school community, while recognizing that children grow up in families, and families are integral parts of communities
- Builds an integrated strategy that enhances *academics* and *student well-being* through **enrichment, health and social supports, family engagement, and youth and community development**
- Is anchored by the work of designated school staff; and
- Provides a base for parent and community advocacy on behalf of children, school and community.

Why Community Schools?

Community Schools are Smart Schools

- Leverage Human Capital by combining historical approaches with existing community based resources on site

Community Schools Build Strong Communities

- Engage communities, recognize parents & families, and work with shared leadership

Community Schools Help Students Learn

- Address outside barriers to learning by providing an array of health & social support within the school
- Teachers feel they are more effective in Community Schools
- Proven to improve student outcomes

Why Community Schools?

- Building on a movement within Pittsburgh that is based on nationally-recognized strategies
- Utilizing strong partnerships – built-in support of District Steering Committee with representation from:
 - Allegheny County Department of Human Services
 - Communities in Schools
 - Early Childhood
 - Education Rights Network
 - Health Department
 - Heinz Endowments
 - Homewood Children's Village
 - Mayor's Office
 - One Pittsburgh
 - Pittsburgh Federation of Teachers
 - Pittsburgh Interfaith Impact Network
 - Pittsburgh Promise
 - School Board
 - Special Education
 - Student Services
 - Superintendent's Office
 - The Pittsburgh Foundation

The Role of the Steering Committee

The Steering Committee was commissioned by the PPS Community Schools Policy. It is a diverse group of stakeholders who are working to:

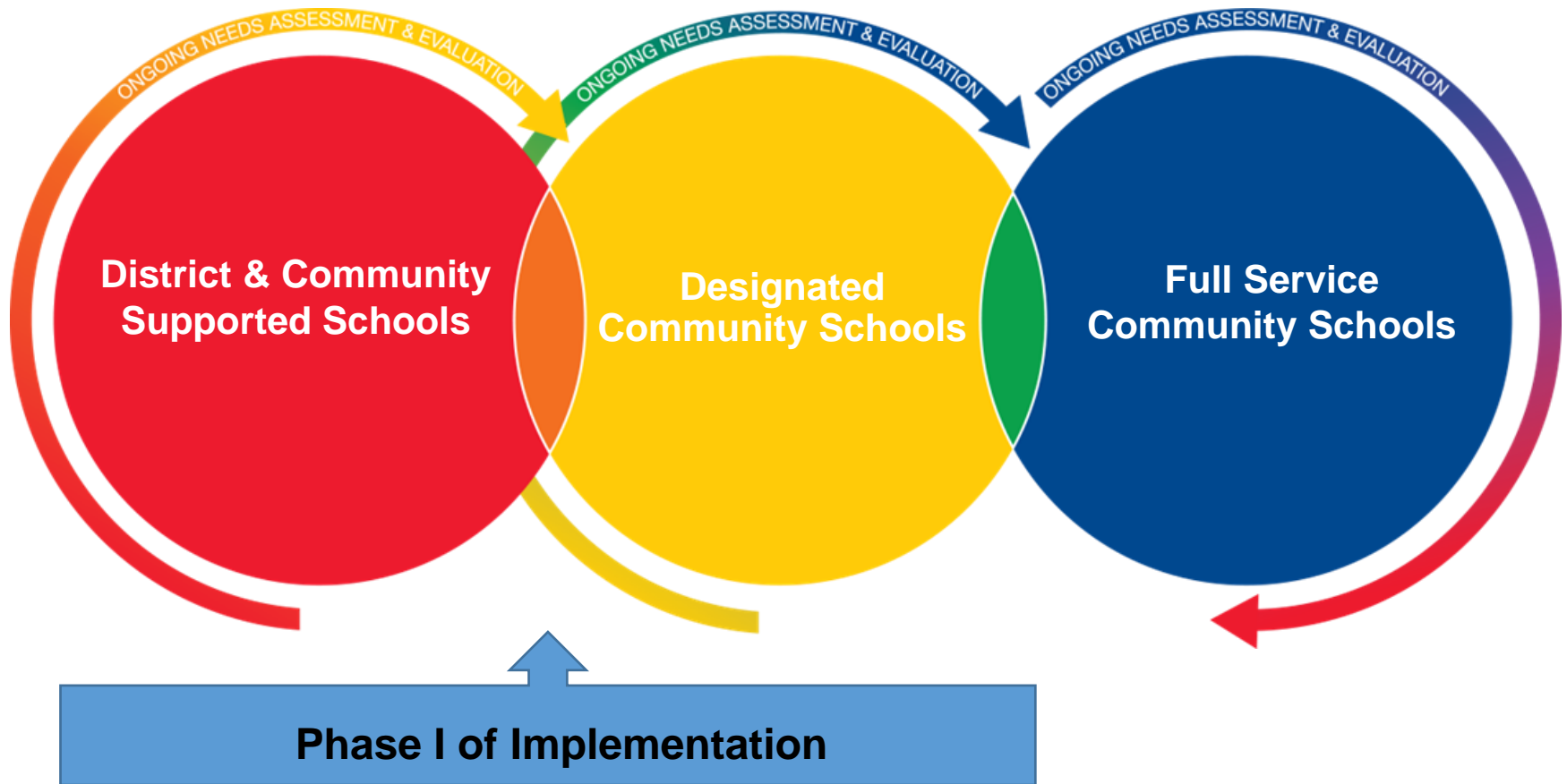
- Develop, monitor and implement the formal designation process,
- Assist with partnership development,
- Resolve conflict, and
- Evaluate the District's Community Schools.

What Are Community Schools

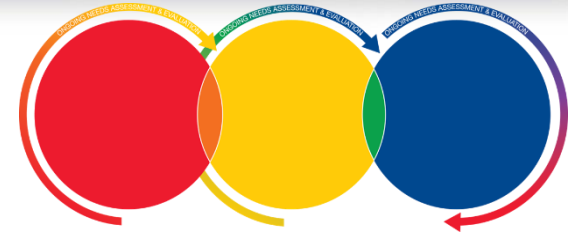
Family League of Baltimore City
Full Service Community Schools Initiative



PPS Community Schools Approach



PPS Community Schools Approach



District & Community Supported Schools

All PPS Schools will be effective schools that support the overall well-being of students. Support could include:

- High-Functioning Student Assistance Program (SAP)
- Support for Social Workers & Guidance Counselors
- Expanded Nurse Services
- Multi-Tiered System of Supports (MTSS)
- Positive Behavioral Intervention & Supports (PBIS)
- Restorative Practices
- Parent Engagement
- Parent School Community Council (PSCC)
- Out of School Time Opportunities

Designated Community Schools

Designated schools will engage broad community organizations to provide intensive support. Schools will have:

- Designation through an application process
- A person responsible for program & service coordination
- Enhanced services based on a needs assessment with students and families
- Transformative parent and community engagement

Full Service Community Schools

Serve as a Hub for the community, in addition to traditional school functions and activities.

- Includes a community needs assessment
- Provides comprehensive services for students, families and community members, which may include:
 - Adult Education
 - Medical/Dental Services

The Application

The Application is Open!

The PPS Policy states that “formal designation of a Community School shall occur through an application process...” that is managed by a central District Community School Steering Committee.

- Designed by the Committee with input from national Community School best practices
- Goal to understand a school and a school’s interest, readiness, and commitment to the Community School strategy

Application Overview

Sections:

- Identifying information
- Understand the need for a Community School
- Understand the current programming and initial ideas for services
- Stakeholder engagement
- School continuum analysis
- Optional questions

Timeline Overview

Application

- January 26: Application launched
- February 17: Application due
- March 1-10: Site visits

Board Meetings

- March 15: Agenda Review - Schools announced
- March 20: Public Hearing
- March 21: Legislative Meeting

Site Manager Selection

- March – May: Includes interviews at school sites

Implementation

- June: Training for all Community Schools staff
- Summer and Ongoing: School-Based Needs Assessment and Implementation Plan

Community Schools Update

- Held three Steering Committee Meetings to date
- Established three working committees
 - Communications
 - Data & Evaluation
 - Resource Coordination and Development
- Presented to the Principals and other school leadership at the January Leading and Learning Institute meeting
- Launched the application process
- Presented to Milliones University Prep staff
- Presented to Beechwood Elementary Parent School Community Council
- Met with the Special Assistant to the Secretary of Education
- Received our first application yesterday!

Q&A