

Strategic Plan Update

Education Committee, January 8, 2018

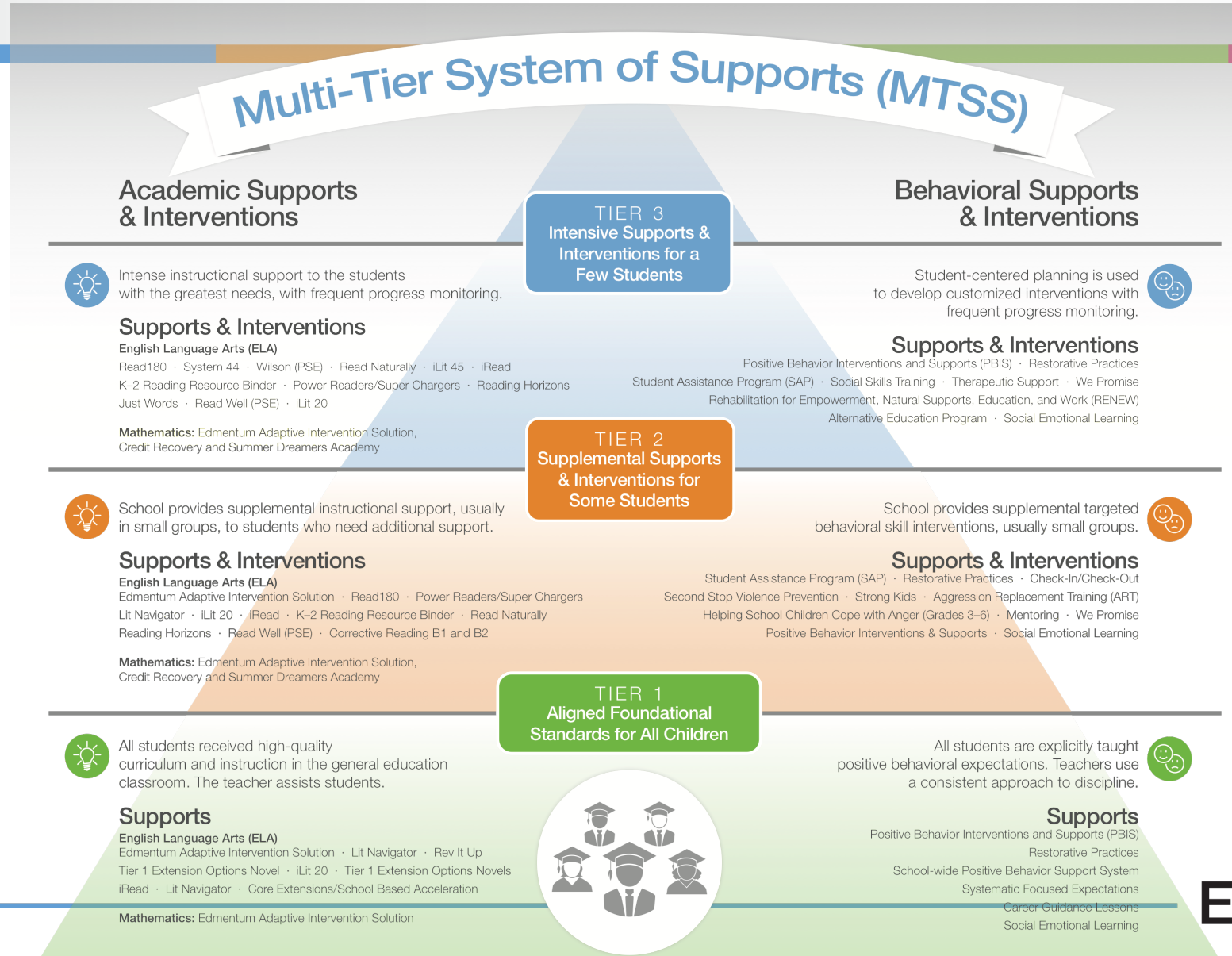
Expect great things.



Agenda

- ☐ Review theme 1 of the strategic plan to ‘create a positive and supportive school culture’
- ☐ Provide an update of key efforts within this theme related to implementing:
 - ☐ A Multi-Tiered System of Support (MTSS)
 - ☐ Positive Behavioral Interventions and Supports (PBIS)
 - ☐ Restorative Practices (RP)
 - ☐ Student Assistance Program (SAP)

It All Starts with MTSS...

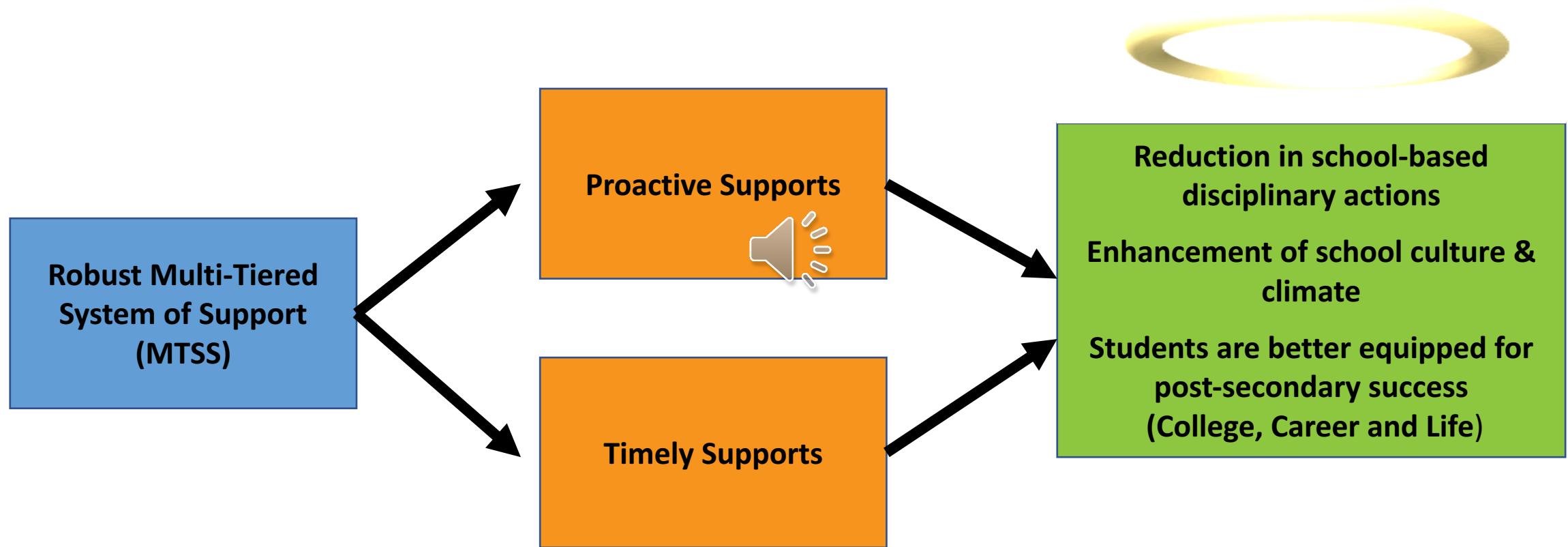


Expect great things.

MTSS Defined

MTSS is a model of schooling which integrates evidence-based problem solving for academic and behavioral instruction. The integrated instruction is delivered to students based on needs in varied intensity levels (multiple tiers). The goal of need driven decision making is that ALL students achieve and/or exceed proficiency.

...MTSS is a Critical Lever for Achieving our Strategic Plan Outcomes



 Expect great things.

PBIS Defined

PBIS is a **data-driven decision making framework** for establishing the **social culture** and behavioral supports needed for a school to be an **effective learning environment** for **all students and staff** with the goal of increasing effectiveness and efficiency and ensuring a process for continuous improvement.



17-18 PBIS Training Professional Learning Roadmap

Tiered Fidelity Inventory (TFI) Sub-Scale: Team	
TFI 1.1	Team Composition
TFI 1.2	Team Operating Procedures
TFI Sub-Scale: Implementation	
TFI 1.3	Behavioral Expectations
TFI 1.4	Teaching Expectations
TFI 1.5	Problem Behavior Definitions
TFI 1.6	Discipline Policies
TFI 1.7	Professional Development
TFI 1.8	Classroom Procedures
TFI 1.9	Feedback and Acknowledgement
TFI 1.10	Faculty Involvement
TFI 1.11	Student/Family/Community Involvement

TFI Sub-Scale: Evaluation	
TFI 1.12	Discipline Data
TFI 1.13	Data-based Decision Making
TFI 1.14	Fidelity Data
TFI 1.15	Annual Evaluation
8 Classroom Management Practices	
1	Arrange orderly physical environment
2	Define, Teach, Acknowledge Rules and Expectations
3	Define, Teach Classroom Routines
4	Employ Active Supervision
5	Provide Specific Praise for Behavior
6	Continuum of Response Strategies for Inappropriate Behaviors
7	Class-Wide Group Contingency
8	Provide Multiple Opportunities to Respond

Restorative Practices Defined

Restorative Practices are based on principles and processes that emphasize the importance of ***positive relationships*** as central to building community and repairing relationships when harm has occurred.

- Focus on
 - Developing and maintaining relationships
 - Building a healthy community that values all
 - Collaborating to solve problems
 - Enhancing responsibility and accountability
 - Addressing misbehavior and conflict productively

Restorative Practices vs. Restorative Justice

Restorative Practices

- Largely *proactive*
- Informal and formal processes that *precede and respond* to wrongdoing
- Focus on building relationships and a sense of community to prevent conflict and wrongdoing

Restorative Justice

- Largely *reactive*
- Informal and formal *responses* to crime and other wrongdoing *after it occurs*
- Focus on repairing harm caused by a wrongdoing



Expect great things.

Restorative Practices Schools

Grade Band	PERC Schools (22)	New RP Schools (10)
K-5	Arsenal; Banksville; Beechwood; Concord; Faison; Linden; Minadeo; Phillips; Spring Hill; West Liberty; Westwood	(Crescent Early Childhood Center); Lincoln; Miller; Weil
K-8	Greenfield; Langley; Mifflin; Morrow	King; Manchester
6-8	Allegheny; South Brook; South Hills; Sterrett	
6-12	CAPA; Sci Tech	Milliones University Prep; Westinghouse
9-12	Brashear	Perry
Special Schools		Oliver Citywide Academy

Expect great things.



Expect great things. 

Student Assistance Program

The Student Assistance Program (SAP) has been a foundational state-mandated intervention provided within each of our schools.

SAP Defined

Pennsylvania's Student Assistance Program (SAP) is designed to assist school personnel in identifying issues including alcohol, tobacco, other drugs and mental health issues which pose a barrier to a student's success. The primary goal of the Student Assistance Program (SAP) is to help students overcome these barriers in order that they may achieve, remain in school and advance.

Hallmarks of SAP

- Includes individual and small-group prevention and intervention services.
- Uses an unique model whereby our schools are licensed as outpatient mental health sites to assure on-site behavioral health counseling for students in need through a partnership with Allegheny County Department of Human Services (DHS).
- Annually, PPS affords a 3-day training in March 2017 for new staff serving on the SAP team to become certified; This training is offered in the spring in preparation for the upcoming school year.
- Monitoring and support is provided by Student Support Services.



Resources to Support the Work...

- ☐ Extensive professional development and training
- ☐ Support staff to build the capacity of school-based personnel for the culture and climate efforts and provide technical assistance:
 - ☐ Learning Environment Specialists: 12 (6 centrally embedded within each Network and 5 school-based)
 - ☐ Restorative Practices Project Manager and Coach
- ☐ External technical assistance
 - ☐ PaTTAN and Mid-west PBIS Network (national trainers)



Thank You!

 Expect great things.