

Gifted and Talented

Expect great things.



Agenda

- Review K-8 Gifted Identification Model
- Discuss Direction and Change

Pennsylvania Department of
Education Comprehensive Plan

Strategic Theme #1

Create a positive and supportive
school culture.

Strategic Theme #2

Develop and implement a rigorous,
aligned instructional system.

Terminology

In the context of this discussion “**identification process**” refers to the District process for identifying students for gifted services.

Underserved students in our district includes students of color, English language learners, low social-economic status, and students with a learning disability.

District's Responsibility...

PA Code 16.21. General. Gifted

- (a) Each school district shall adopt and use a system to locate and identify all students within that district who are thought to be gifted and in need of specially designed instruction.
- (c) Each school district shall determine the student's needs through a screening and evaluation process which meets the requirements of this chapter.



Number Students Tested for Gifted Services K-5

Bottom 10 Schools (K-5 Populations)	
School Name	Number of Students Tested
LANGLEY	1
SPRING HILL	1
MANCHESTER	2
WEIL	3
MORROW	3
ML King	4
WHITTIER	4
ARSENAL	5
SUNNYSIDE	5
Woolslair	5

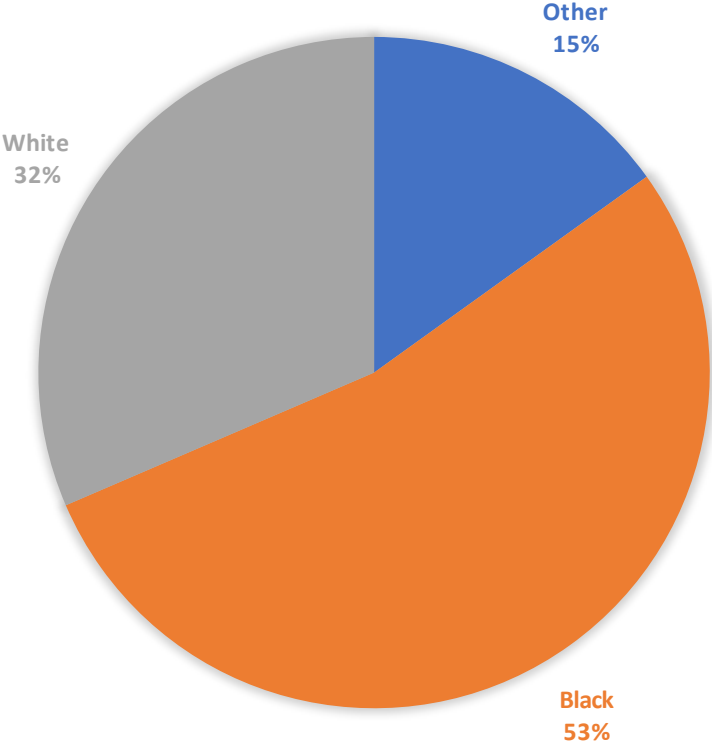
Top 10 Schools (K-5 Populations)	
School Name	Number of Students Tested
LINDEN	17
BEECHWOOD	18
PHILLIPS	19
CARMALT	20
ALLEGHENY TRADITIONAL	23
LIBERTY	23
GREENFIELD	24
DILWORTH	30
MONTESSORI	37
COLFAX	106

Racial Demographics (Raw Numbers K-5)	Total
ASIAN	22
BLACK	142
HISPANIC	9
MULTI-RACIAL	45
PACIFIC ISLANDER	1
WHITE	273
TOTAL	493

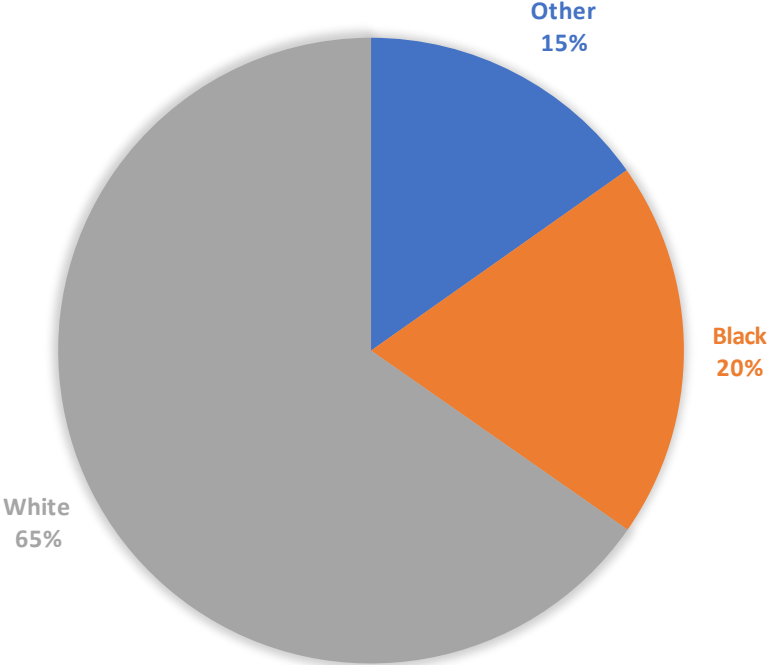
(August/2018). Data pulled from the 2017-2018 Gifted Recommendations database.

Areas for Continued Improvement

2017-2018 PPS K-12 RACIAL DEMOGRAPHICS



2017-2018 PPS K-12 GIFTED RACIAL DEMOGRAPHICS

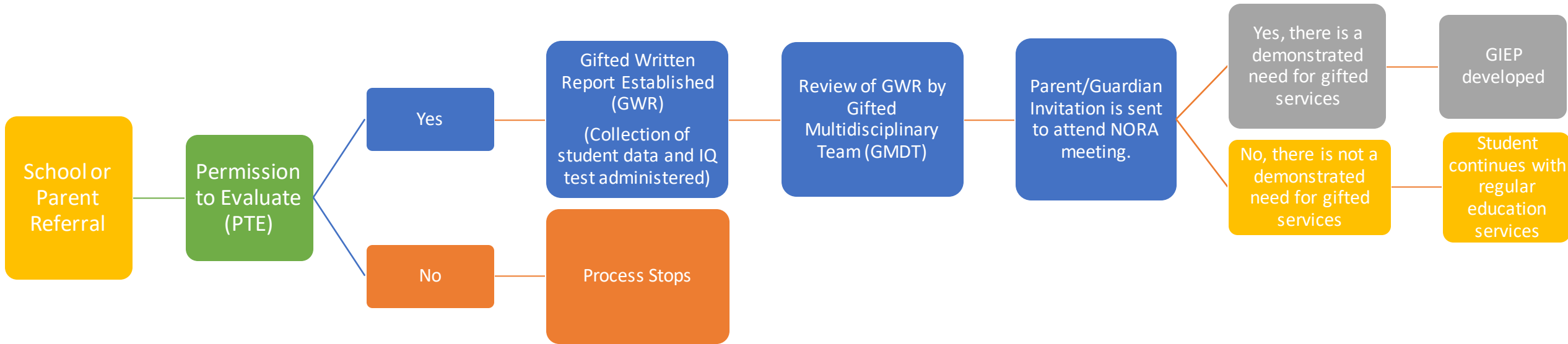


*The Gifted Racial chart only includes students identified as gifted. (August/2018)

National Trends

“In 2014, Black and Latino students accounted for 26% of all students identified as gifted nationally, but together accounted for 40% of the population in schools offering gifted services (CRDC, 2014). It is estimated there are 500,000 Black and Latino students not receiving gifted services, accessing rigorous courses, and advanced programs due to under identification (Ford, 2010). “

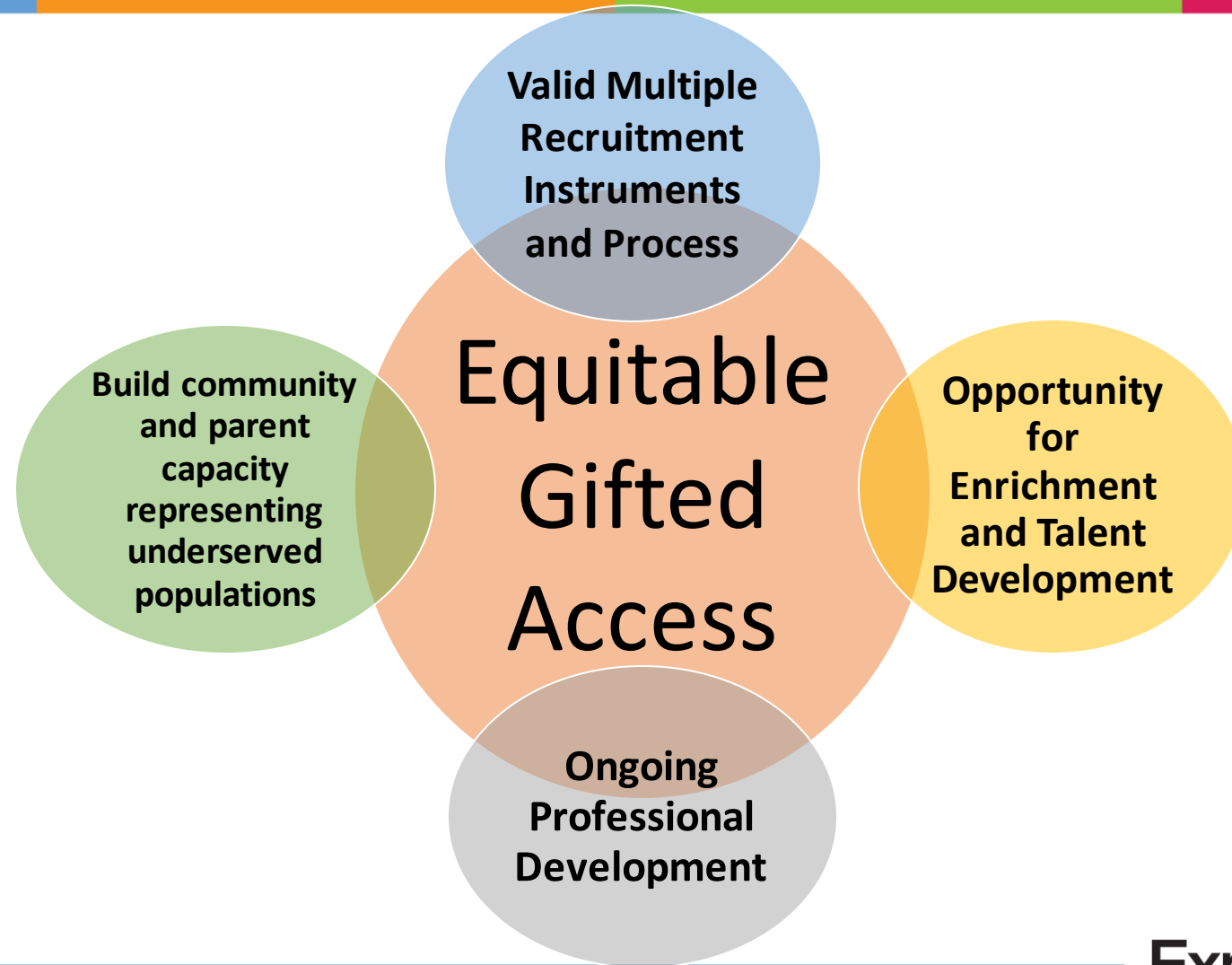
Current PPS Gifted Identification Process



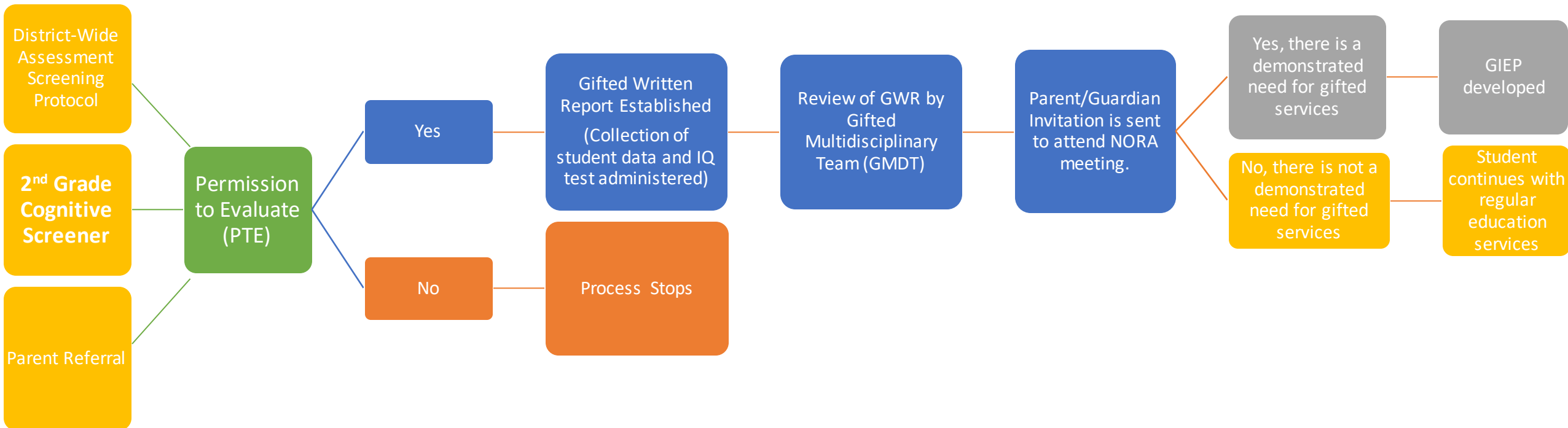


Expect great things.

Gifted Equitable Access Model



Proposed PPS Gifted Identification Process



2nd Grade Pilot Gifted Screener

The purpose of the pilot is to assess best tools and strategies in identifying gifted students, and in particular students from underserved populations (twice-exceptional (2e), low-income, Emerging language Learners (ELL), and students of color). The pilot for the 2018-2019 school year is at no cost to the district.

Pilot School Identification & Screeners

Pilot School Identification

- All K-5 and K-8 schools were placed into a comparative analysis across demographic groups (high poverty, ELLs, and PSE)
- Data pulled Data, Research, Evaluation, and Assessment (DREA).
- Pilot schools chosen: Arlington, Arsenal, Banksville, Brookline, Langley, & Mifflin

Pilot Screeners

NNAT3

- Arlington, Banksville, Mifflin

Pilot Screener: CogAT

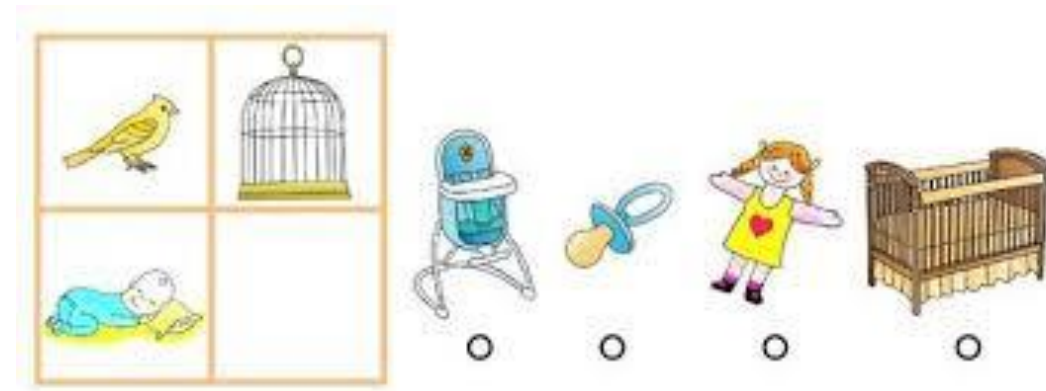
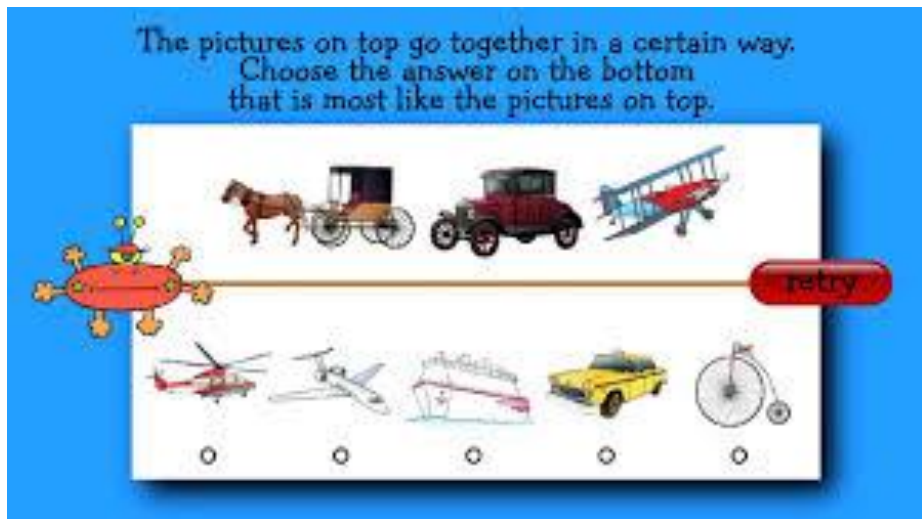
- Langley, Arsenal, and Brookline

2nd Grade Pilot Screener Administration

- Test administration will start October 2018 and conclude May 2019.
- ITL, guidance counselor, or social worker can administer
- Assessments are computer based
- The assessment will be administered to 10-15% of second grade students at each pilot school each month starting in October. (The district can increase the percentage of students assessed per month.)
- As soon as the assessment is complete the data is automatically sent to an online database.
- Students demonstrating gifted potential will follow district identification process

Cognitive Abilities Test (CogAT)

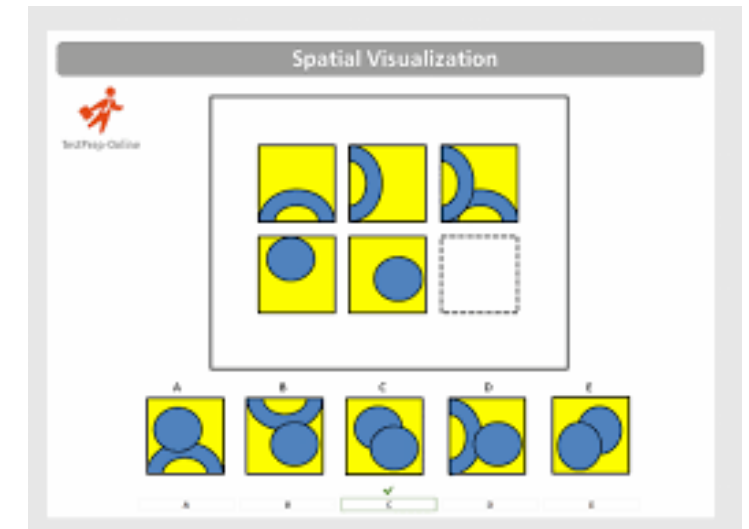
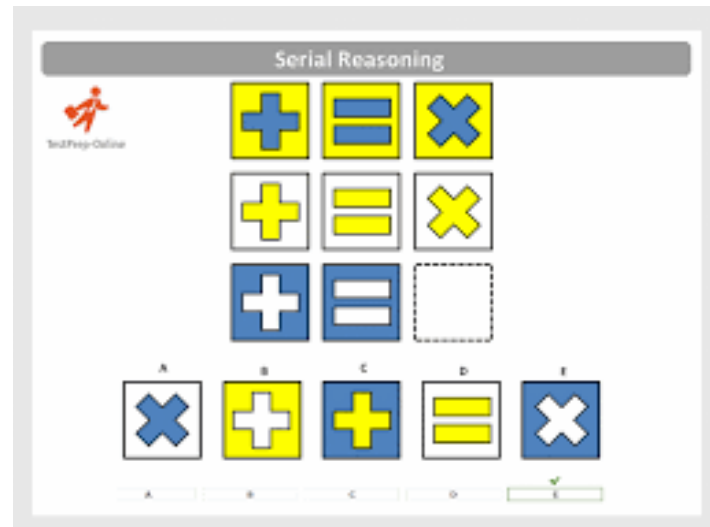
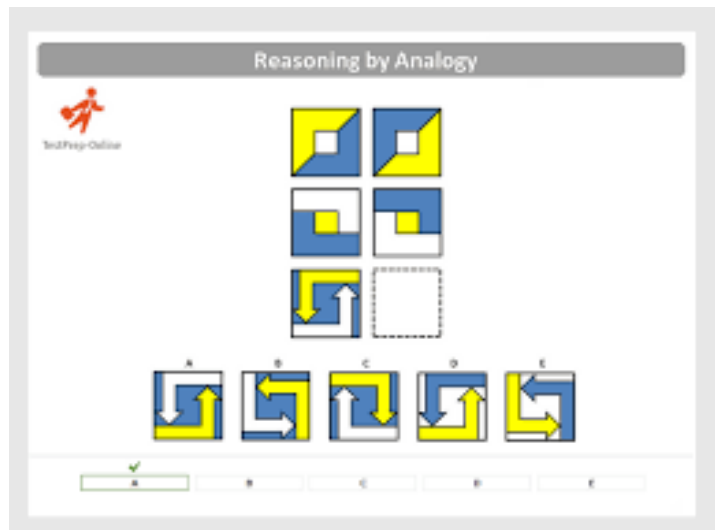
- Cognitive Ability Test (CogAT) measures: Verbal, Quantitative, and Non-Verbal assessment.
- Online Assessment: The assessment can be administered on a desktop, laptop, Chromebook, or iPad. There are sections where directions are read aloud
- Assessment Time: 45 minutes-1 hour



 Expect great things.

Naglieri Nonverbal Ability Test (NNAT3)

- Naglieri (NNAT3) measures: Non-verbal general reasoning ability.
- Online Assessment: The assessment can be administered on a desktop, laptop, Chromebook, or iPad.
- Assessment Time: 30 minutes.



Expect great things.

2nd Grade Parent Communication

- District mails letter and sends robo call to all 2nd grade pilot school parents (letters will be translated in top five languages)
- Letter and FAQ available on pilot school websites
- School sends letter home via backpack
- 2nd grade pilot school teachers provide letter during parent teacher conferences
- Parent outreach through PSCC meetings (October- November)
- Screening results shared with parents after administration



Thank
You



 Expect great things.