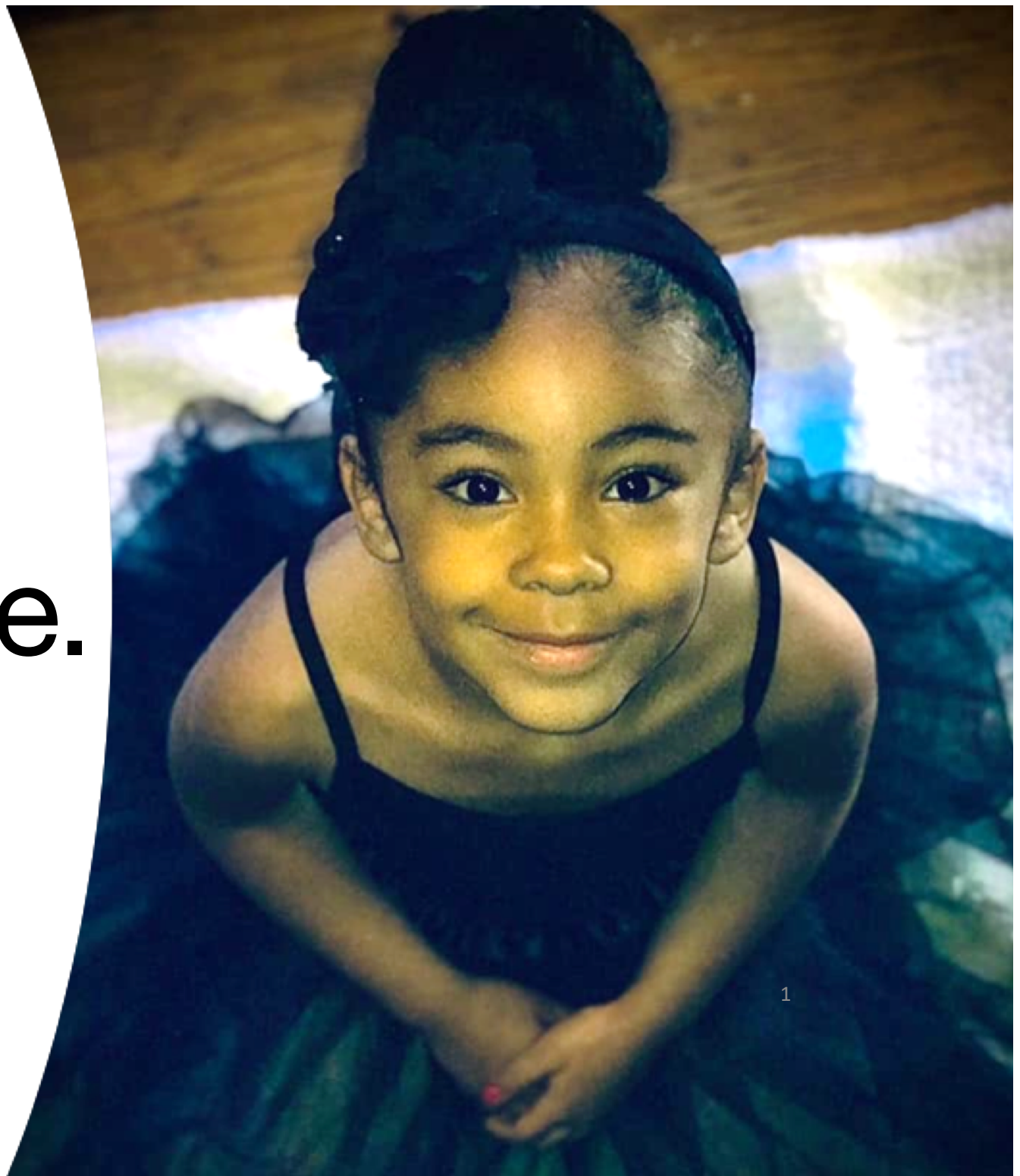



Imagine
our future.



The Future of Work



Public education
as we know it is changing.
The old models that were used
for more than 100 years are no
longer effective.
We must change, too.

We must be innovative and adaptive so we can provide our students with the skills they need to succeed in life.

Then



Now





STUDENT A

MATH
SCIENCE
ENGLISH
SOCIAL STUDIES



STUDENT B

CONTENT MASTERY
CRITICAL THINKING
COMMUNICATION
COLLABORATION
CREATIVITY
GLOBAL COMPETENCE
SELF-DIRECTION

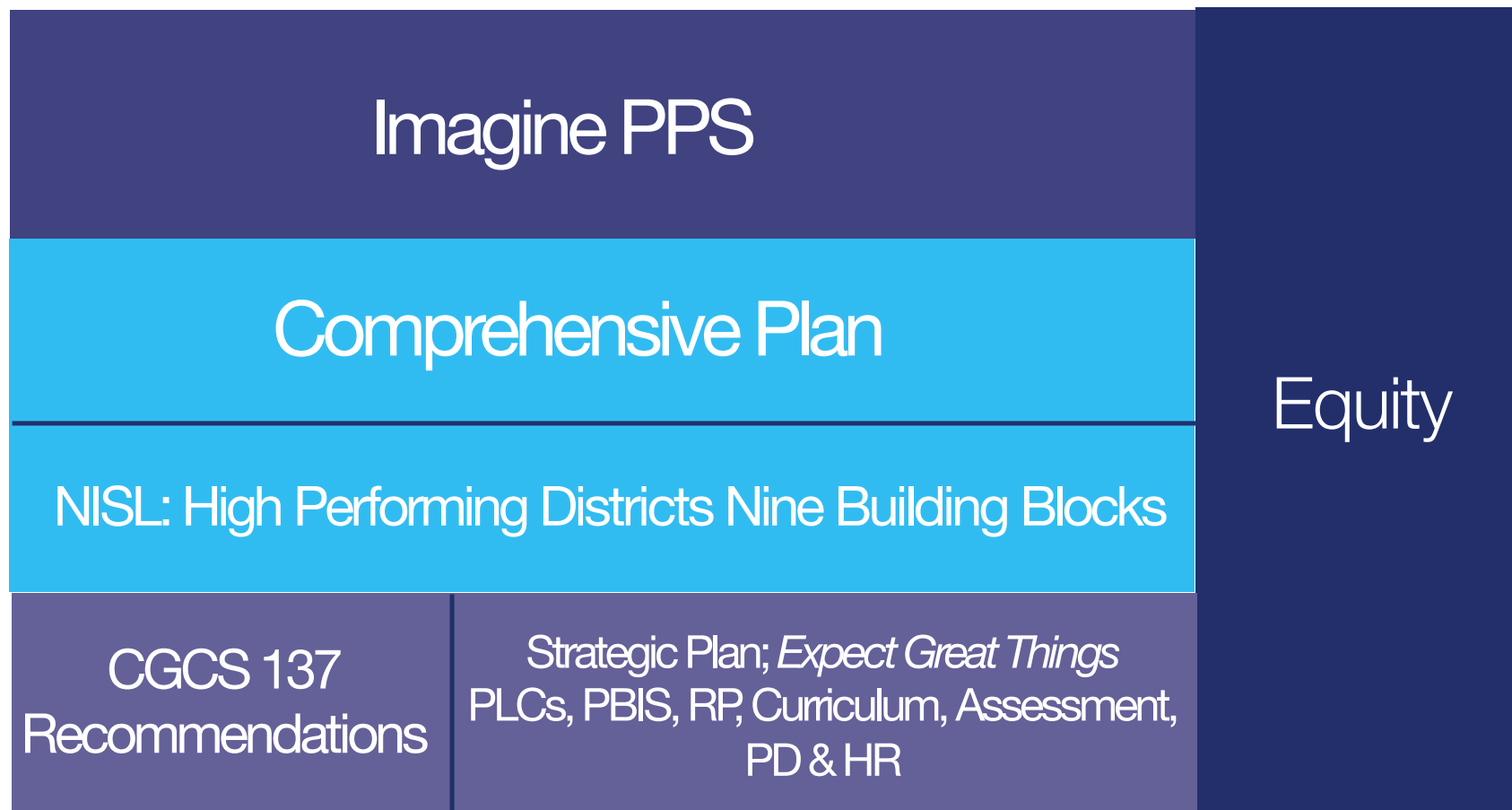
School districts all across the country are wrestling with this same challenge. But at Pittsburgh Public Schools, we have a vision.

We must change
the face of
education.



We already built the foundation.

These transformational building blocks,
are what will change the future of our
students and our City.



Introducing **Imagine PPS.**

Imagine a City-Wide Initiative



Our platform:

PPS cannot accept the status quo.

In order to graduate students who are prepared for the jobs of the future, we must take bold steps to align our vision with reality.

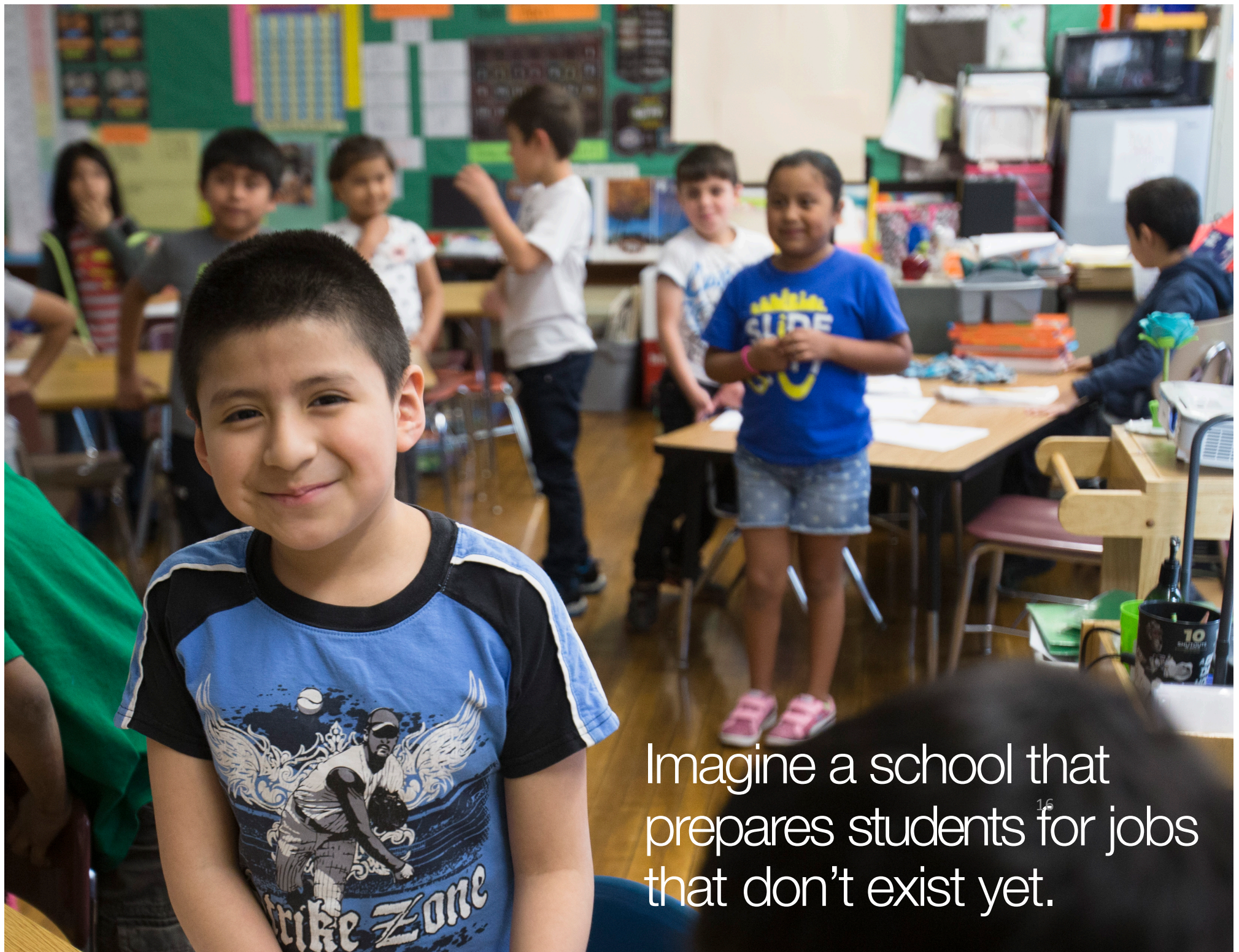
And we cannot do it alone.

We live in a city that values innovation. The time has come for us to ask others to join us in providing additional ownership, partnership and influence to realize our collective vision and work.

Our platform continued:

A new, city-wide initiative will help us achieve our goal of a modernized public education system that serves all students regardless of their zip code.

The Imagine PPS launch corresponds with the sunset of the District's current strategic plan but goes further to design an education delivery model that aligns with the values of our community, engages public and private partners as well as our school community, and provides champions that ensure all students are prepared to succeed in college, career and life.



Imagine a school that
prepares students for jobs¹⁶
that don't exist yet.

A photograph of a classroom scene. A woman with brown hair and glasses, wearing a grey sweater, is leaning over a desk and pointing at a laptop screen. A young woman with blonde hair is sitting at the desk, looking at the laptop. The background shows a classroom with a chalkboard, a stack of books, and a computer monitor.

Imagine a classroom powered
by the latest technology.



Imagine a city fueled by
Pittsburgh Public graduates.

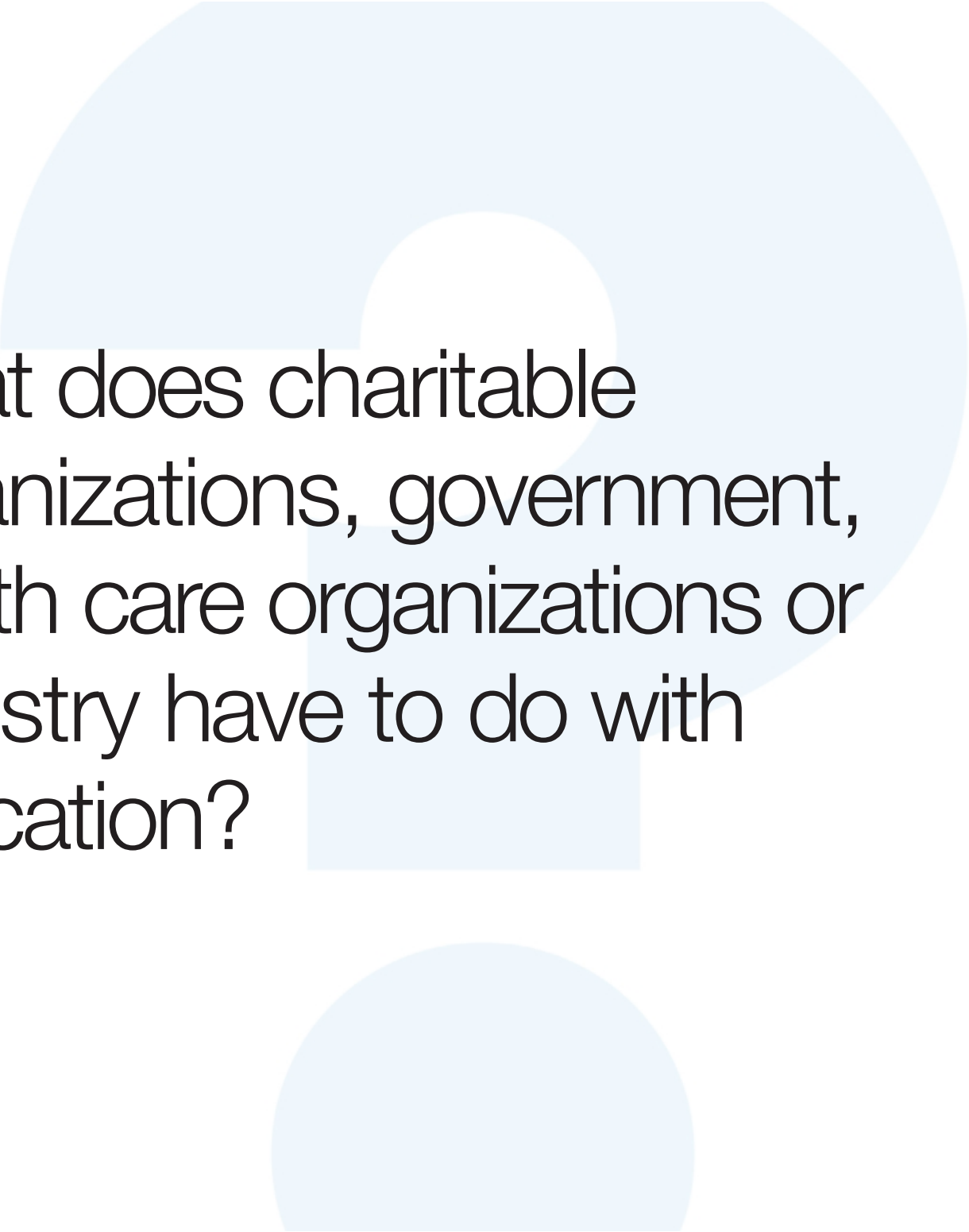
Imagine all members of the community
coming together to create...
a school system that graduates students
who are well-prepared for life,
families who are engaged, neighborhoods that are
welcoming, and a city that is vibrant and
economically sound.



"Team of 10"



THE FORBES FUNDS



What do charitable organizations, government, health care organizations or industry have to do with education?



Everything.

Our partners may not be educators, but they are experts in fields that will hire our graduates.

They are collaborators, leaders and mentors, providing the knowledge and resources we need to achieve our vision.

Their commitment is real and
their contributions are significant.
Here are a few examples:

The Economy League,
Allegheny Health Network and
the Community College of Allegheny
are helping us explore ways to prepare
students for careers in trending fields.



The University of Pittsburgh's Center for Urban Education, the Buhl Foundation and Homewood Children's Village are providing student and teacher supports in some of our high-needs high schools.



The Buhl
Foundation



Pittsburgh Food Policy Council and local restaurateurs are collaborating with us to improve the quality of our school food service so we can provide healthy meals that our students will enjoy.



UPMC Children's Hospital of Pittsburgh and the Allegheny County Department of Human Services bring expertise in children and teen mental health.



The Heinz Endowment, the Pittsburgh Housing Authority and the Children's Museum support our work in expanding programs for children from birth to eight years old.



THE HEINZ ENDOWMENTS



The Pittsburgh Penguins Foundation is ready to partner with students, parents and coaches to re-establish strong athletic programming and K-12 offerings.





Imagine what
our graduates will look like.

They will be personally
prepared, civically engaged
and ready to take on the
jobs of the future.



Imagine giving students the problem-solving skills they need for tomorrow's high-tech jobs.



What can you do to help?

During the next few months,
we will be recruiting additional support
from civic, corporate and philanthropic leaders.

We will be collecting data and analyzing
our facilities and needs.

We will be celebrating success stories within
our schools and forming Design Teams to
target specific areas
for improvement.

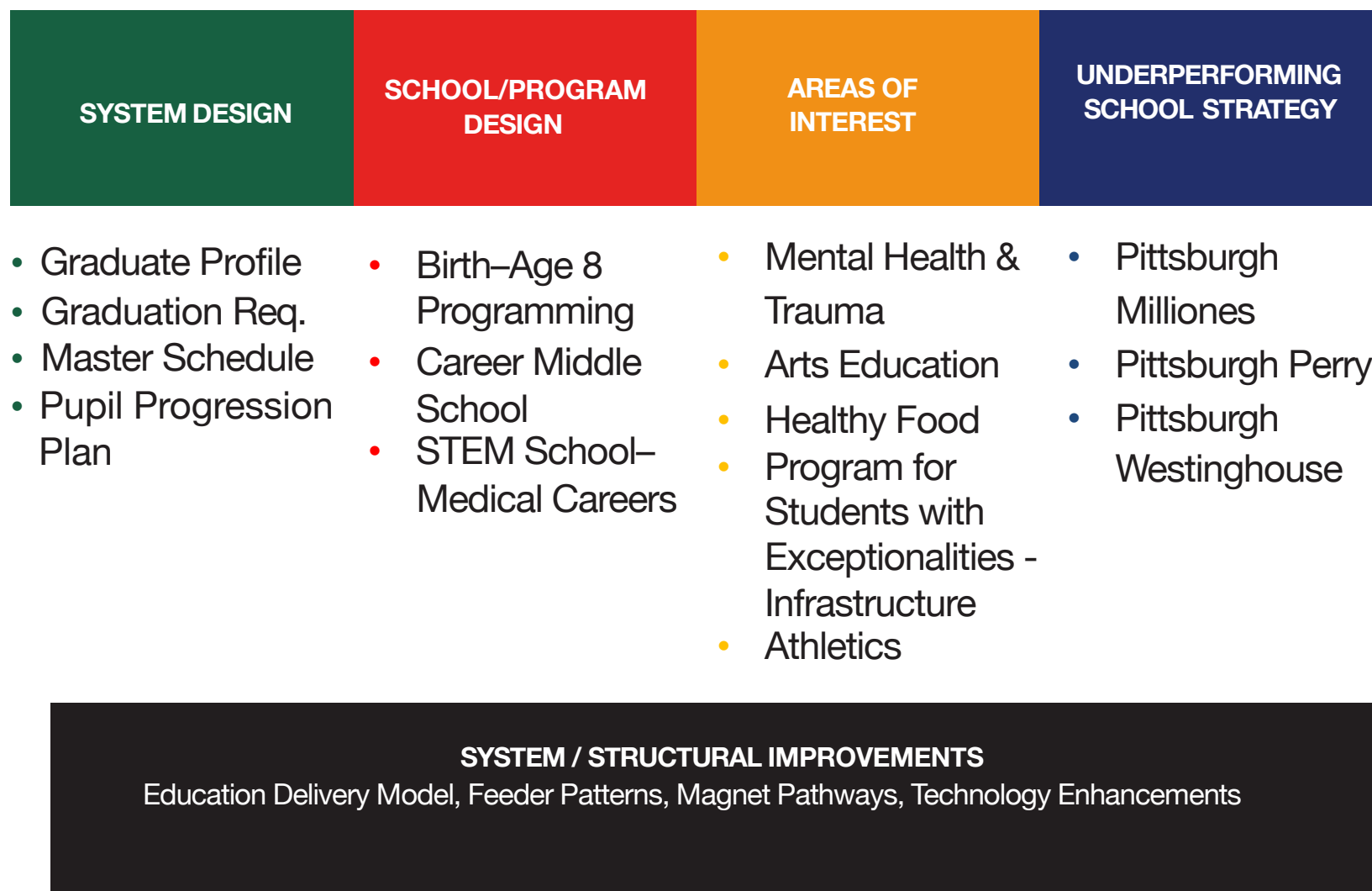
Community Champions

Community Champions are individuals that serve as experts in their area of focus, or whom have leverage and influence as trusted spokespeople to advocate and lead. They will direct the work of the *Imagine PPS* effort, helping to facilitate learning, create connections, and drive the work of the Design Teams responsible for our 12 Focus Areas.

Design Teams

- **Research:** Highly successful models and programs exist within schools and communities across the United States.
- **Action Plan:** The next step will be using this initial research to outline a plan for the work of the Design Team to be operationalized.
- **Recommendations:** At the conclusion of the six-month engagement period, each design team will be responsible for delivering its list of recommended next steps (including a budget and possible support) to PPS Executive Cabinet, allowing the District to synthesize the recommendations from the various teams into a master *Imagine PPS* plan to be presented to the School Board.

Design Team Components





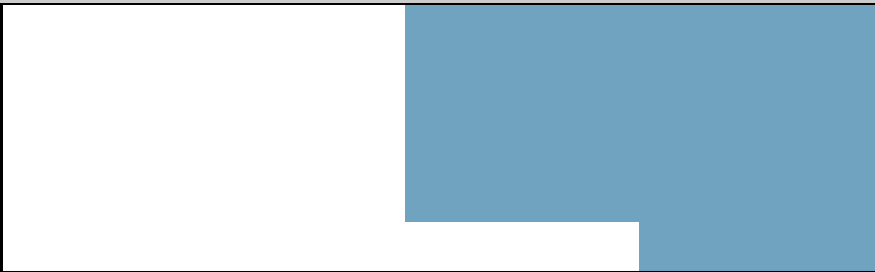



		Design Team Leaders		
		Team	Champion	PPS Team Lead
New School Design		Student Pathways	National Institute for School Leadership	Ms. Minika Jenkins
		Birth – 8 years Programming and School	The Heinz Endowments, Housing Authority, and Children’s Museum	Mrs. Carol Barone-Martin
		Career Middle School	Economy League	Ms. Angela Mike
		Medical Careers High School	CCAC TBD	Mr. Jamie Griffin
Areas of Interest		Mental Health	UPMC Children’s Hospital	Dr. Alisha Johnson
		Arts Education	TBD	Dr. Kymberly Cruz
		“Homemade” Healthy Food	Food Policy Council	Ms. Curtistine Walker
		Program for Students with Exceptionalities Infrastructure	Achieva	Ms. Ann Herrmann
		Athletics	Penguins Foundation	Mrs. Karen Arnold
Under Performing Schools		Pittsburgh Milliones	TBD	Dr. Shemeca Crenshaw/Dr. Nina Sacco
		Pittsburgh Perry	The Buhl Foundation	Mr. Darrel Prioleau/Dr. Nina Sacco
		Pittsburgh Westinghouse	Homewood Children’s Village	Mr. Stephan Sereda/Dr. Rodney Necciai

Every member of the PPS community and the Pittsburgh community at large will have the opportunity to contribute to this plan.

We are asking teachers, staff, students, parents and stakeholders to share their ideas and join with us in re-imagining Pittsburgh Public Schools.

Timeline

	Nov/Dec	Jan	Feb	Mar	Apr	May	June
Initiation, Project Mobilization & Planning							
1. Develop <i>Imagine PPS</i> concept & work plan							
2. Develop descriptions for community engagement							
3. Identify Focus Areas							
4. Create Design Teams for Focus Area and recruit members and Champions							
5. Develop communications plan							
6. Present Imagine to PPS Board							
Phase 1: Communications, Engagement and Design Team Work							
1. Implement communications plan							
2. Design Team work sessions							
3. Engage in active community listening							
Phase 2: Research, Data Gathering & Analysis							
1. Gather data and information from Design Teams							
2. Research best practices and analyze data							
Phase 3: Design & Solutions Development							
1. Develop recommendations, actions, and timelines resulting from Design Teams' work.							
2. Review and prioritize recommendations and actions.							
3. Engage the community for feedback / reactions to recommendations and actions.							
4. Deliver recommendations to Board.							
Continuous Throughout Project							
1. Solicit ongoing feedback from stakeholders, Design Team members, community champions, and PPS staff.							
2. Develop and continuously monitor clear metrics for success.							

This is the
opportunity of a lifetime
to change the future of our
children and our city.

For more information visit:
pghschools.org/imaginePPS