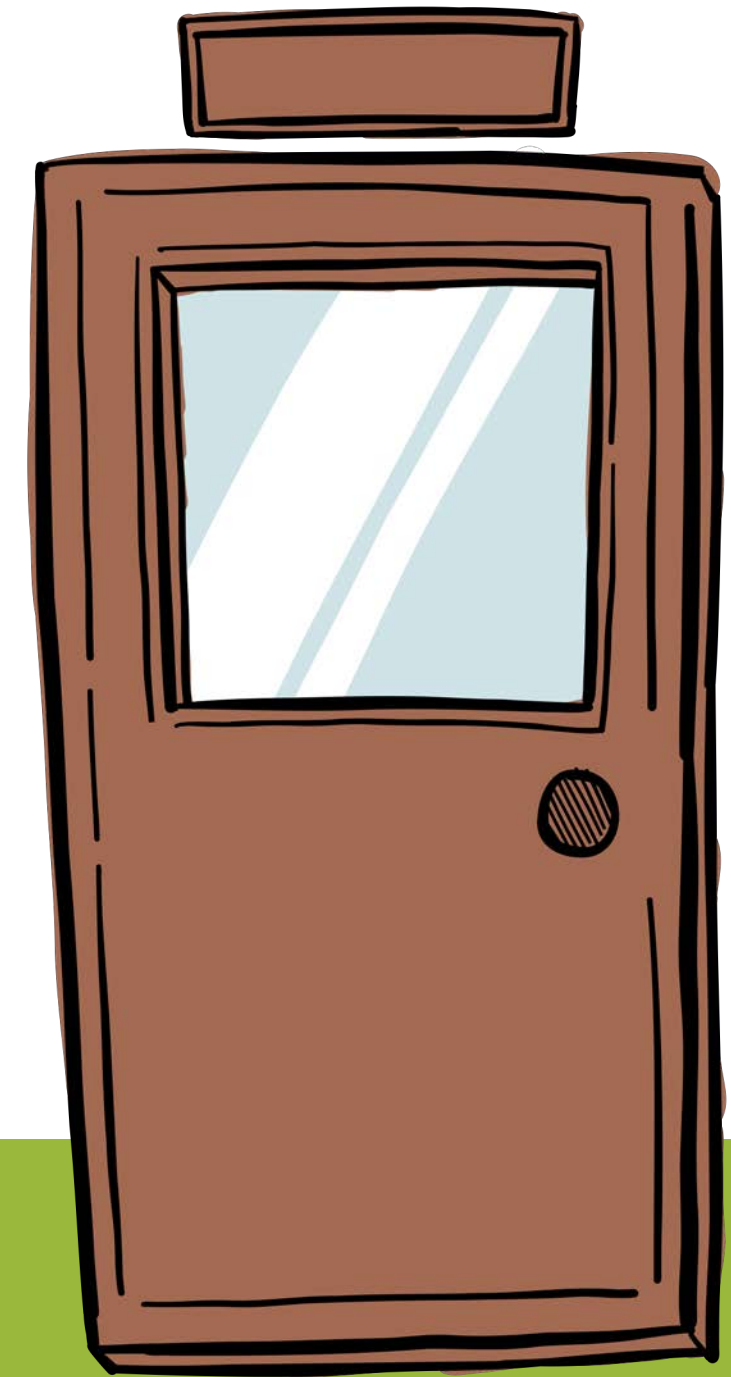


Supplementary Instructional Tools

Curriculum and Instruction



Enhance Teaching and Learning



Alignment to Strategic Plan

Strategic Theme #1

Create a positive and supportive school culture.

Strategic Theme #2

Develop and implement a rigorous, aligned instructional system

Strategic Theme #3

Provide appropriate instructional support for teachers and staff



Graduate Profile:

Pittsburgh Public Schools

Academically Prepared

Knowledge in Content

Apply acquired
knowledge and skills.

Foundational, Financial, and Technology Literate

Use digital media and
technology to solve
problems, synthesize
information, or create new
knowledge.

Researchers

Look for multiple
perspectives and
sources of information.

Graduate Profile:

Pittsburgh Public Schools

Fundamentally Capable

Critical and Creative Thinkers and Problem Solvers

Act on intellectual curiosity by questioning assumptions and evaluating information and perspectives.

Growth Minded

Practice self-efficacy by accepting and embracing failure to elevate.

Literacy



Achieve3000®



Dr. Ann Fillmore
Executive Director,
Literacy and Library
Services

afillmore1@pghschools.org

412-529-3892

Achieve3000

supports teachers and students with supplemental literacy resources aligned to their individual needs, as indicated by the NWEA Map Growth RIT and Lexile. If used with fidelity, students will grow more than a typical year's worth of growth.

Reading Horizons — Discovery and Elevate

supports foundational literacy instruction for our K-12 students in need of intensive literacy support.

IXL Literacy

supports K-12 students that receive targeted literacy support. IXL Literacy will provide teachers and students with standards-aligned resources designed to target their instructional needs aligned to NWEA Map RIT.

World Book Online

supports K-12 students as they research topics of interest. This supplemental Library instruction resource provides resources for building background knowledge, atlas exploration, historical timelines, and many others.

Text Help—Read & Write

provides several tools for students to engage with online resources: screenshot reader, digital highlighters, speech, dictionaries annotations, PDF editors, and many more.

Social Studies



Achieve3000



Dr. Bernard Taylor, Jr.
Principal on Special
Assignment

Btaylor2@pghschools.org

412-529-4630

Achieve3000 (K-5 and 9-12)

offers content that features diverse backgrounds and experiences and works from authors with diverse backgrounds, so students will see themselves in the content they read and be exposed to other cultures, ideas, and ways of thinking. Students will also be able to see themselves and their classmates in the authors whose work they read.

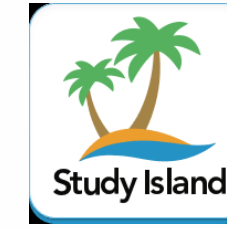
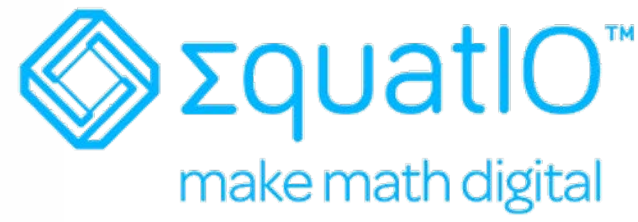
Actively Learn (9-12)

drives students to determine the validity of sources and use "Knowledge Sets" and the "Thinking Like a Historian Knowledge Set." Students also tackle reading primary sources and are encouraged to pursue independent research via the product's research function.

Newsela (6-8)

provides customizable resources that allow teachers and administrators to match lessons with their preferred scope and sequence, allowing teachers to seamlessly weave Newsela into other topics and texts being taught in the classroom.

Mathematics



Mr. Vincent Scotto

STEAM

Coordinator

Vscotto1@pghschools.org

412-529-3078

Text Help – EquatIO

provides tools for our students as they engage with online resources: screenshot reader, digital highlighters, speech recognition, mathematical and scientific formulas, embedded graphics calculator, STEM Tools, PDF editors, and more.

IXL Learning–IXL Math (6-12)

provides supports for students by supplementing core instruction with scaffolds and supports for mathematics intervention and acceleration.

Achieve3000–Math (K-5)

provides supports for students by supplementing core instruction with scaffolds and supports for mathematics intervention and acceleration. Provides data to teachers to support students in a more individualized way.

Blue Streak Education–Blue Streak Math (K-5)

provides supports for students in mathematics fact fluency and building number sense in a game-based environment. This tool allows students to practice at their individual level and provides data to teachers to drive number talks.

ExploreLearning–Gizmos (6-12)

provides virtual models for complex concepts that would otherwise be difficult to model in a regular classroom. Students can explore and investigate with these models to better understand small and large quantities in a hands-on way.

Edmentum–Study Island (K-11)

provides supplemental lessons and practice for core instruction. This tool allows students to practice core concepts and receive additional feedback and practice as needed that is tied back to core instruction.

Science



Mrs. Rhonda Graham
Curriculum Supervisor,
Science K-12

Rgraham1@pghschools.org

412-529-3629

ExploreLearning–Gizmos (6–12)

provides virtual models for complex concepts that would otherwise be difficult to model in a regular classroom. Students can explore and investigate with these models to better understand small and large quantities in a hands-on way.

Labster (9–12)

provides hundreds of simulations for students to investigate various topics and concepts in Biology, Chemistry, and Physics. Students can engage in labs in an interactive environment that allows for investigative learning, from simple to highly complex experiments. These labs allow for dynamic visualization of concepts and scientific practices that build their skills as a scientist.

Edmentum–Study Island (K–11)

provides supplemental lessons and practice for core instruction. This tool allows students to practice core concepts and receive additional feedback and practice as needed that is tied back to core instruction.

Discovery Education –Experience (All)

provides students and teachers curated videos, lesson modules, interactive project boards, virtual field trips, and many more digital resources for all subjects and topics. Teachers also have access to various asynchronous professional learning, lesson ideas, and current events materials.

World Languages



Ms. Marsha Plotkin-Goleman
World Languages Curriculum Supervisor K-12
mplotkingoleman1@pghschools.org
(412) 529-3073



你好
Salut!
Hallo!
Ciao!
こんにちは
Oi!
Привёт
¡Hola!

Yabla

allows students and teachers to use a library of authentic videos that can be selected to align with curriculum units at all proficiency levels and national American Council on the Teaching of Foreign Language (ACTFL) World-Readiness Standards. Additionally, ancillary activities are included with the subscription.

This is Language

provides Second Language Acquisition and immersive experience through an extensive library of over 10,000 authentic videos. This also offers unscripted videos spoken by school-aged speakers from a variety of target language countries. Games, activities, and additional materials support videos selected for instruction.

OWL Testing Software

provides PPS with World Languages district-wide assessments, PPS ORALS and Multimode Testing. Teachers use this editable platform to create listening, speaking, reading, and writing activities for their classes. This is also used for teacher candidate proficiency testing, SLOs, and entrance tests for students who have applied to the World Language magnet programs.

Mango Languages

supports all eight languages taught in PPS, Grades K-12: Chinese (Mandarin), French, German, Italian, Japanese, Portuguese, Russian, and Spanish that includes speaking, listening, reading, and writing enrichment and practice for students at all proficiency levels in alignment with the national ACTFL World-Readiness Standards. Mango also offers language practice at home for students and families with access to over 90 additional languages included with the subscription.

Arts



Dr. Chris Protho

Coordinator, Performing
Arts

Cprotho1@pghschools.org

412-529-3722

Essential Elements Interactive

(Murphy's Music Center)

supports Instrumental Music through guided instructional method texts that allow student access and teacher feedback online or offline. It also supports Instrumental instruction in General Music.

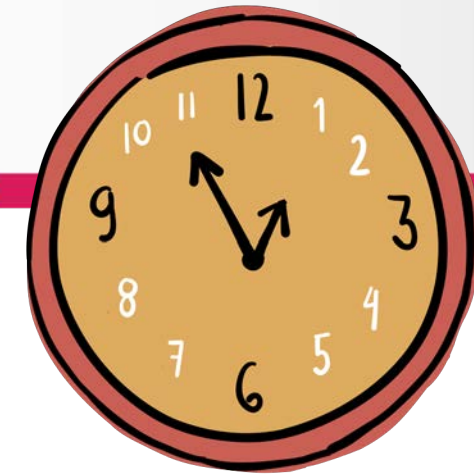
SmartMusic (MakeMusic, Inc.)

supports Vocal Music and other courses and units through the use of online student recording and compositional tools.

QuaverMusic

supports General Music in Grades K-12 through lesson materials, sample plans, songs, etc., for use in-person, online, and at home.

Additional Supports for Students and Families



Talking Points

offers a two-way, multi-lingual texting platform for fast communication between the district, schools, and teachers with parents and students.



global wordsmiths

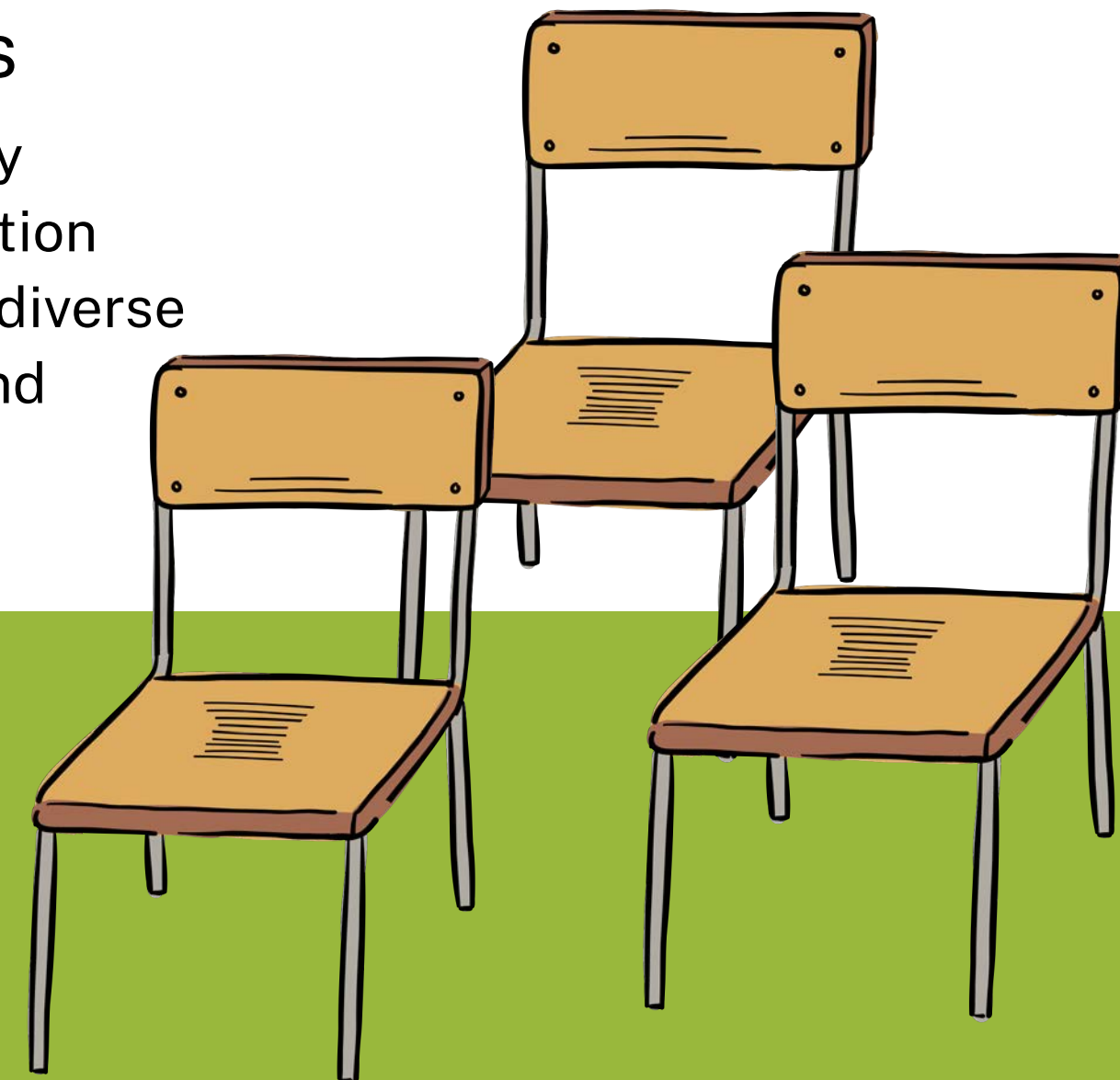
Global Wordsmiths

contributes to high-quality translation and interpretation services for linguistically diverse families across schools and department areas.



Culturally Responsive Teaching and Learning

provides a framework, resources, strategies, and supports to help shift mindsets and skillsets that can change the instructional dynamic in the classroom and overall school culture with a specific focus on engaging students in lessons designed with students' cultural behaviors in mind.



District Strategic Initiatives

(SEL and Data Analysis)



Rethink Ed

- A dynamic platform for K-12 SEL resources including differentiated lesson plans, videos, at-home learning materials, and additional resources
- The platform also includes family and adult-focused SEL resources & support
- ReThink provides a reporting dashboard and access to SEL screeners



Data Wise

- Eight-step model that guides teams of educators in working collaboratively to improve teaching and learning through evidence-based analysis.
- The habits of mind that underline the work include (1) a shared commitment to action, assessment, and adjustment, (2) intentional collaboration, and (3) a relentless focus on evidence.

Thank you!



CONTACT:

Ms. Minika Jenkins, Chief Academic Officer

ChiefAcademicOfficerOffice@pghschools.org

412-529-3722

A list of blended learning resources will be added to the student resources webpage on Friday, August 13, 2021.