



Silver Creek School Corporation
DISTRICT-WIDE FACILITY ASSESSMENT
School Board Meeting

July 16, 2024

CREATED FOR



CONTENT

- 1 Planning Schedule Update
- 2 Existing School Information
- 3 Feasibility Study Framework
- 4 Next Steps

School Board
Work Session

DISTRICT-WIDE
FACILITY
ASSESSMENT

July 16, 2024

CREATED FOR

Silver Creek
School
Corporation



GIBRALTAR
DESIGN

PLANNING SCHEDULE UPDATE

Schedule

DATE	
February 5, 2024	<p>School Board Meeting Update</p> <ul style="list-style-type: none"> Review Components of the Study and planning schedule milestones Launch Process and Planning with End In Mind
March 12, 2024	<p>School Board Meeting Update</p> <ul style="list-style-type: none"> Present summary data about the existing school buildings and sites Present preliminary findings for Summary of Existing Conditions Introduce Process for Learning Environment Input
April 9, 2024	<p>School Board Meeting Update</p> <ul style="list-style-type: none"> Summary [preliminary] of Facility Improvement Considerations Summary of Operational Cost Savings Opportunities Finalize Process for Learning Environment Input
May 14, 2024	<p>School Board Meeting Update</p> <ul style="list-style-type: none"> Present [preliminary] Summary of Learning Environment Considerations Present summary of school [Principal] input for Learning Environments Overview of Student Enrollment and Capacity
June 6, 2024	<p>School Board Meeting Update</p> <ul style="list-style-type: none"> Review Study Considerations of Learning and Facility Needs for Strategic Plan Present & Discuss Feasibility Options for Exploration Confirm any/all questions to finalize comprehensive Study
July 16, 2024	<p>School Board Meeting Update</p> <ul style="list-style-type: none"> Follow-up on any content questions or other ideas from the final Study Preliminary Review of Feasibility Options and Discussion
August 13, 2024	<p>School Board Meeting Update</p> <ul style="list-style-type: none"> Thorough Review of Feasibility Options to Meet Needs Cost Estimate Option(s) & Financial update in consideration of Options and Strategic Plan

Progress

- ❖ Compile Site and Building Data
- ❖ Preliminary First Walk-Through of each Building's Assessment
- ❖ Meetings for Maintenance Input
- ❖ Learning Environment Input
 - ◆ *Staff Survey – district-wide*
 - ◆ *Principal Input Meeting*
- ❖ Research of Feasibility Study Options
- ❖ Develop Options For Considerations of Building Impact

School Board
Work Session

**DISTRICT-WIDE
FACILITY
ASSESSMENT**

July 16, 2024

CREATED FOR

*Silver Creek
School
Corporation*



GIBRALTAR
DESIGN

EXISTING SCHOOL INFORMATION

EXISTING SCHOOLS

School Board
Work Session

DISTRICT-WIDE
FACILITY
ASSESSMENT

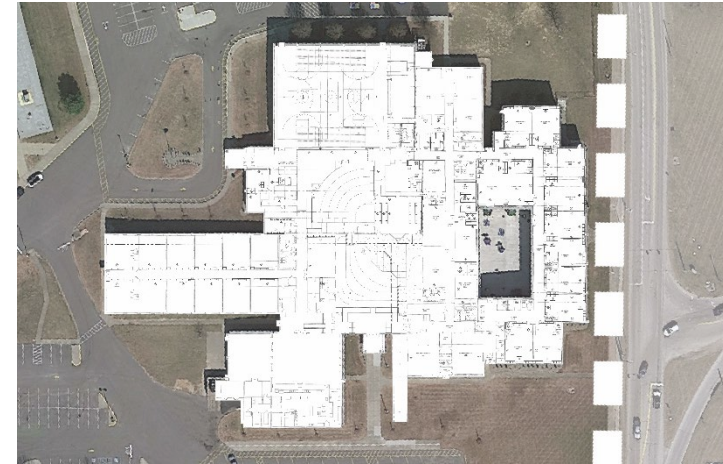
July 16, 2024

CREATED FOR

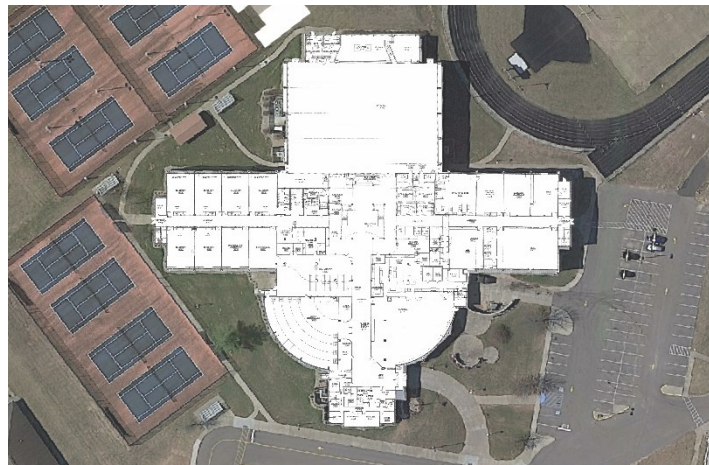
Silver Creek
School
Corporation



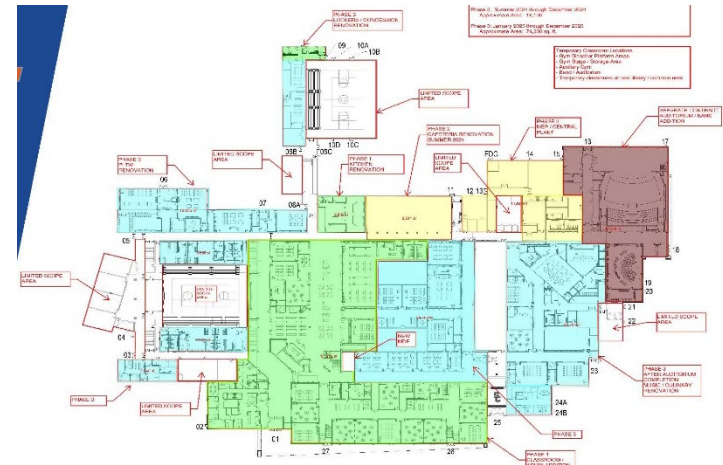
Primary School



Elementary School



Middle School



High School



GIBRALTAR
DESIGN

EXISTING SCHOOLS

High School Campus

School Board
Work Session

DISTRICT-WIDE
FACILITY
ASSESSMENT

July 16, 2024

CREATED FOR
*Silver Creek
School
Corporation*



School Board
Work Session

**DISTRICT-WIDE
FACILITY
ASSESSMENT**

July 16, 2024

CREATED FOR

*Silver Creek
School
Corporation*



GIBRALTAR
DESIGN

FEASIBILITY STUDY FRAMEWORK

FEASIBILITY STUDY FRAMEWORK

Feasibility Study Options; District View

School Board
Work Session

DISTRICT-WIDE
FACILITY
ASSESSMENT

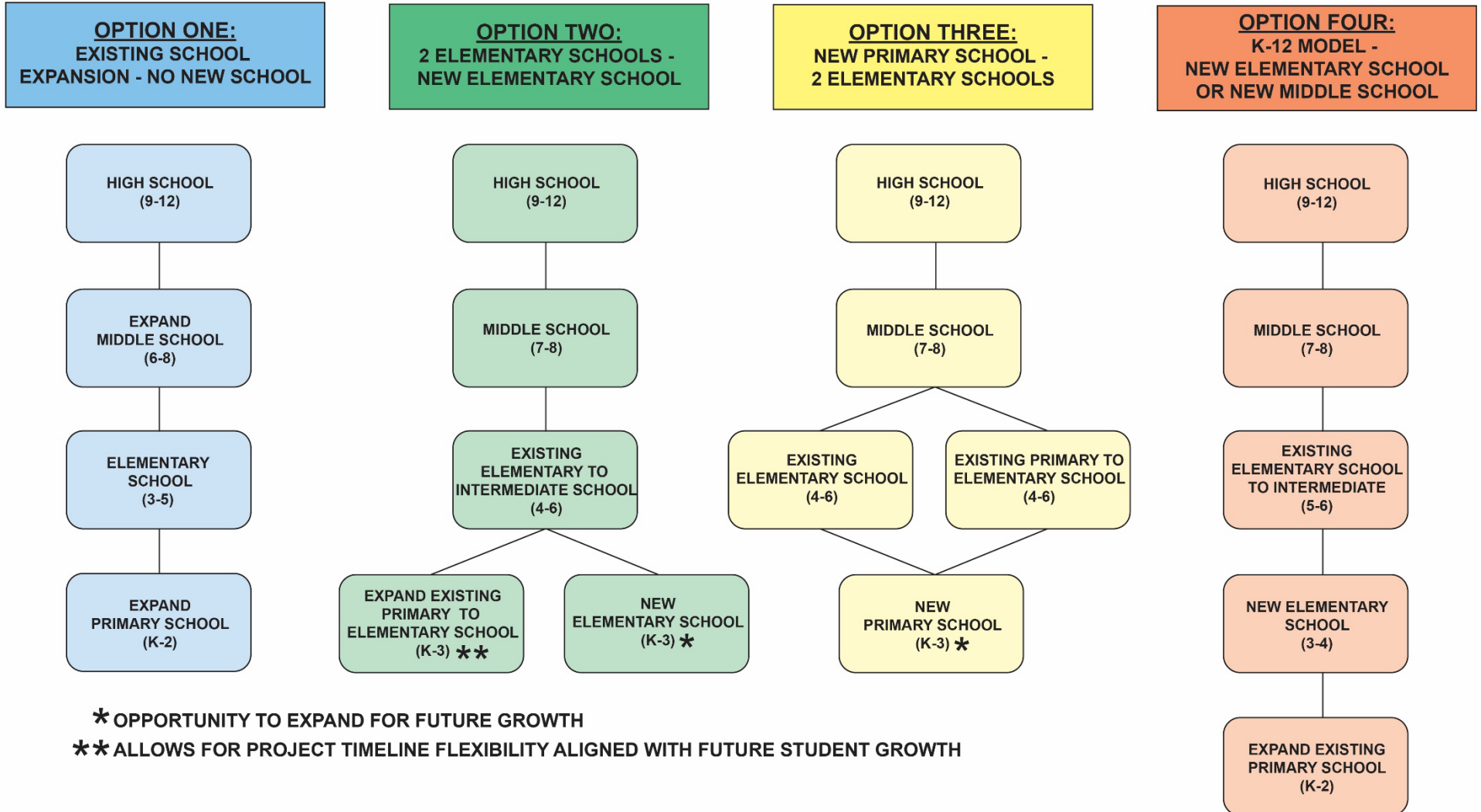
July 16, 2024

CREATED FOR

Silver Creek
School
Corporation



GIBRALTAR
DESIGN



K-8 SCHOOL CAPACITY

Existing K-8 Classroom Quantities

	Classroom Capacity K-8	Student Enrollment Capacity Range K-8
Existing Data	80 Classrooms	1,932 – 2,184 Students
Option One Existing Schools	94 Classrooms	2,272 – 2,564 Students
Option Two New Elementary School	124 Classrooms	2,872 – 3,284 Students
Option Three New Primary School	124 Classrooms	2,872 – 3,284 Students
Option Four K-12 Model	124 Classrooms	2,872 – 3,284 Students

Year End Current Enrollment K-8 = 2,134 Students

*** STUDENT ENROLLMENT CAPACITY WILL VARY DEPENDING ON DIFFERENT GRADE LEVEL CONFIGURATION**

School Board
Work Session

DISTRICT-WIDE
FACILITY
ASSESSMENT

July 16, 2024

CREATED FOR

Silver Creek
School
Corporation



GIBRALTAR
DESIGN

School Board
Work Session

DISTRICT-WIDE
FACILITY
ASSESSMENT

July 16, 2024

CREATED FOR

*Silver Creek
School
Corporation*



GIBRALTAR
DESIGN

FEASIBILITY STUDY FRAMEWORK

Best Practice Educational Considerations

- ❖ Continuation of Services for Special Education Identification (K-3 or K-4)
- ❖ Learning to Read and then Reading to Learn (K-3 Configuration)
- ❖ Minimize student transitions as much as possible to avoid setbacks
- ❖ K-3 Configuration allows more time to develop before transitioning
- ❖ K-3 Configuration promotes Second and Third graders as leaders of the school
- ❖ K-3 Configuration increases likelihood of siblings at the same school

FEASIBILITY STUDY FRAMEWORK

Consideration Analysis

CONSIDERATIONS	FEASIBILITY OPTIONS			
	Option One: Existing Schools	Option Two: New Elementary	Option Three: New Primary	Option Four: K-12 Model
Building Considerations				
No Change to High School	✓	✓	✓	✓
Requires One New Building Construction		✓	✓	✓
Minimal Building Transitions	✓	✓	✓	
Continuation of Learning, Best Practices		✓	✓	
Continuation of SPED Support (Optimal)		✓		
Opportunity for Future Pre-K*		✓	✓	
Expand for Future Growth		✓	✓	
Requires Additional Building Transitions				✓
Minimal Capacity Increase	✓			
Optimal Number/Building Grade Level Sections		✓		
Early Literacy Development and iRead Under One Roof		✓	✓	

* Continuing Study for Early Learning Academy at Hensley Buildings

School Board
Work Session

DISTRICT-WIDE
FACILITY
ASSESSMENT

July 16, 2024

CREATED FOR

Silver Creek
School
Corporation



GIBRALTAR
DESIGN

School Board
Work Session

**DISTRICT-WIDE
FACILITY
ASSESSMENT**

July 16, 2024

CREATED FOR

*Silver Creek
School
Corporation*



GIBRALTAR
DESIGN

NEXT STEPS

School Board
Work Session

DISTRICT-WIDE
FACILITY
ASSESSMENT

July 16, 2024

CREATED FOR

*Silver Creek
School
Corporation*



GIBRALTAR
DESIGN

NEXT STEPS

- ❖ Further Development of Preferred Feasibility Options By School Building
- ❖ Validate Building Enrollment Capacities to Meet Current Needs and Future District Master Plan
- ❖ Begin To Align Best Options With Very Preliminary Budget Estimates
- ❖ Continue to Study Early Learning Options



THANK YOU

CREATED FOR

