



THE SCHOOL BOARD OF VOLUSIA  
COUNTY FLORIDA  
200 North Clara Avenue  
Deland, Florida 32720

# SEABREEZE HIGH SCHOOOL

## REPLACE TILE ROOF AND COAT FLAT ROOF BLDG. 14

### VCS Project NO. 2448040

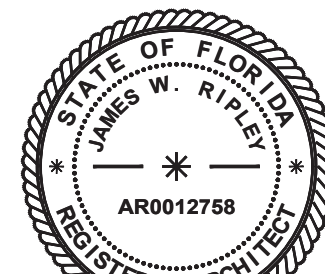
2700 N Oleander Ave.  
Daytona Beach, FL 32118

## SCHOOL BOARD MEMBERS

JAMIE HAYNES	CHAIR - DISTRICT 1
ANITA BURNETTE	VICE CHAIR - DISTRICT 2
JESSIE THOMPSON	DISTRICT 3
CARL PERSIS	DISTRICT 4
RUBEN COLON	DISTRICT 5
CARMEN J. BALGOBIN	SUPERINTENDENT



A/R/C  
Associates  
Incorporated  
Architecture  
Roof Consulting  
Construction Technology  
LIC. NBR AR-0007684  
601 North Fern Creek Avenue  
Suite 100 Orlando, FL  
32803-4899  
Tel. (407) 896-7875  
Fax. (407) 896-6043  
COPYRIGHT © 2024 A/R/C ASSOCIATES, INC.



04/25/2024  
JAMES W. RIPLEY  
AR0012758

*James W. Ripley*

### DESCRIPTION OF WORK

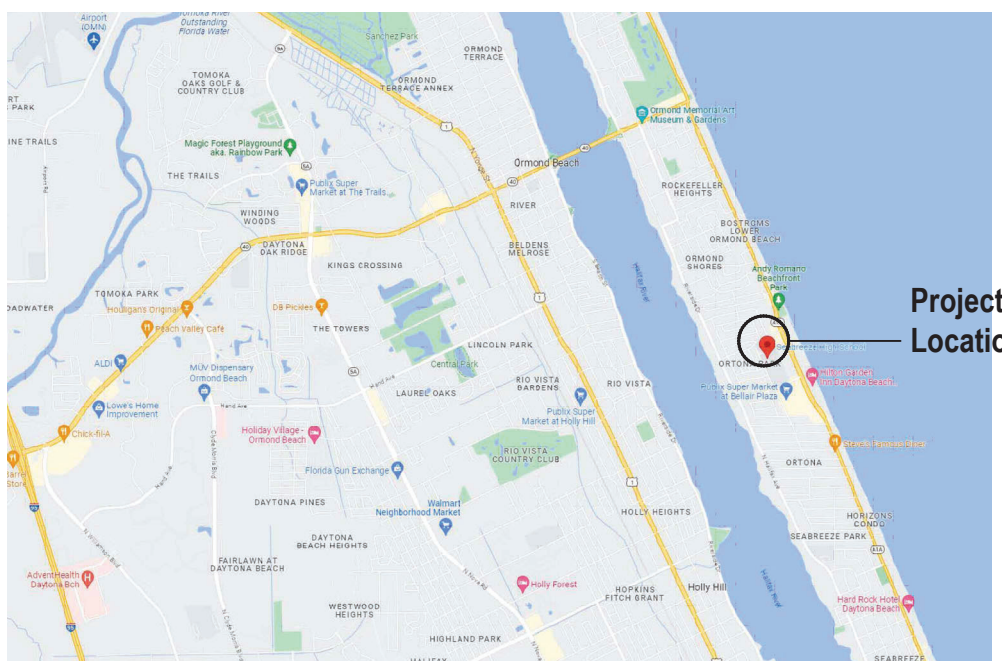
- This scope is intended to define work required to remove and replace the existing standing seam metal roof system throughout the campus.
- Low-slope roof areas - Provide Roof Recovery System. Prepare existing modified bitumen cap sheet to receive additional layer of modified bitumen cap sheet torch applied at the field of the roof and base flashings.
  - Identify areas of moisture intrusion using the Infrared Survey (IR) Report. Cut out membrane and wet insulation, replace with new rigid insulation matching existing thickness.
  - Replace existing roof drains with new (Remove retrofit and primary) at existing locations, provide tapered roof sump and new tapered crickets between primary drains. Secondary Scupper fabrications to remain. Install new escutcheon plates along exterior of scupper.
  - Metal coping and lightning protection system to remain - Replace fasteners with new neoprene backed washers One (1) size larger.
  - Steep-Slope roof areas - Replace existing concrete tile at all locations. Remove underlayment to expose gypsum coverboard. Install new plywood sheathing over coverboard and secure the structural deck below. Apply Two (2) layers of mod. bit. self-adhered underlayment over sheathing. Mechanically fasten and fully adhere concrete tiles per manufacture's recommendations. Replace existing edge metal, gutters and downspouts at existing locations.
  - All Roof Areas - Replace counterflashing at base and rake conditions with new matching existing.

**Architect's Statement of Compliance:** To the best of my knowledge, these drawings and the project manual are complete and comply with the Florida Building Code.

### BUILDING DATA

A. SURVEY PARCEL ID	NOT APPLICABLE FOR PROJECT TYPE
B. LEGAL DESCRIPTION	NOT APPLICABLE FOR PROJECT TYPE
C. OCCUPANCY TYPE	EDUCATIONAL
D. CONSTRUCTION TYPE	TYPE V
E. RISK CATEGORY	III
F. AUTOMATIC SPRINKLER	NOT APPLICABLE FOR PROJECT TYPE
G. BUILDING AREA	25,621 SQ. FT. (LOW-SLOPE PROJECT ROOF AREA) 8,610 SQ. FT. (STEEP-SLOPE PROJECT ROOF AREA)
H. BUILDING HEIGHT	VARIES, 44 FOOT MAXIMUM MEAN ROOF HEIGHT
I. OCCUPANT LOAD	NOT APPLICABLE FOR PROJECT TYPE

### LOCATION MAP



**SITE VICINITY MAP**

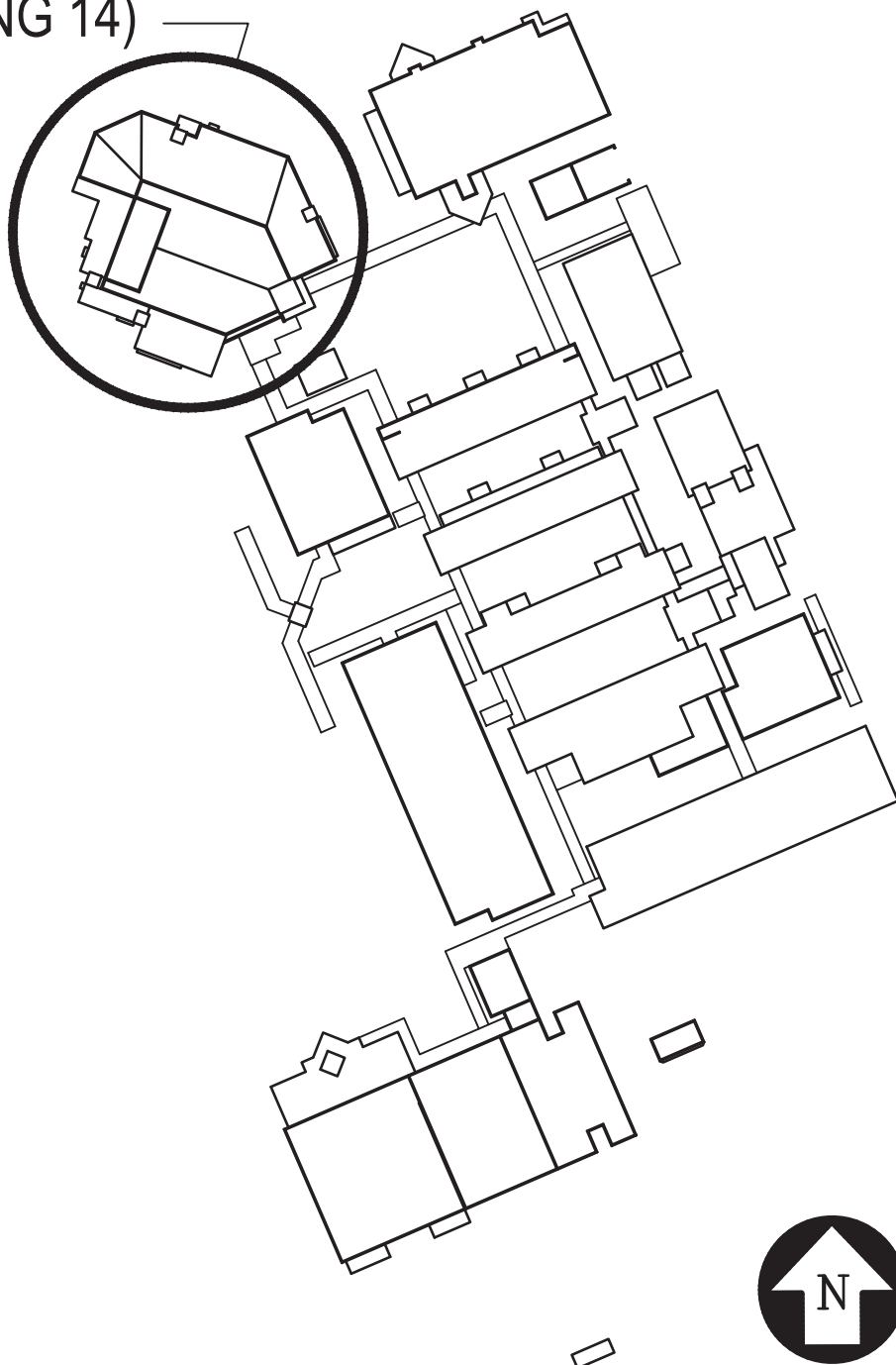
NOT TO SCALE

### ENGINEERS & CONSULTANTS

Building Envelope  
  
A/R/C ASSOCIATES, INC.  
601 NORTH FERN CREEK AVENUE, SUITE 100  
ORLANDO, FLORIDA 32803  
407-896-7875 (FAX) 407-896-6043  
PROJECT MANAGER  
CONTACT : JAMES W. RIPLEY (JIMR@ARC-ARC.COM)

### CAMPUS PLAN (FOR REFERENCE)

AUDITORIUM  
(BUILDING 14)



## DRAWING INDEX

SHEET NUMBER	SHEET TITLE
G01	COVER SHEET, VICINITY MAP AND DRAWING INDEX
G02	GENERAL ROOF NOTES, ROOF COMPONENT FASTENING SCHEDULE & ABBREVIATIONS
A01	OVERALL ROOF PLAN, PHYSICAL CHARACTERISTICS SCHEDULE & BLDG. CODE DATA
A02	AUDITORIUM PARTIAL ROOF PLAN - NORTHEAST AND NOTES
A03	AUDITORIUM PARTIAL ROOF PLAN - SOUTHWEST, ROOF AREA J/14 AND NOTES
A04	PARAPET, EDGE AND BASE FLASHING DETAILS
A05	TYPICAL BASE AND RAKE EDGE FLASHING DETAILS
A06	TYPICAL BASE AND RAKE EDGE FLASHING DETAILS AND FABRICATIONS
A07	TILE VALLEY AND RAKE FABRICATION DETAILS
A08	DRIP EDGE METAL MISCELLANEOUS FABRICATION DETAILS
A09	DRIP EDGE TERMINATION AND BASE FLASHING CORNER DETAILS
A10	RIDGE FLASHING AND MECHANICAL EQUIPMENT DETAILS
A11	ROOF DRAIN FLASHING AND GUTTER FABRICATION DETAILS
A12	MISCELLANEOUS GUTTER AND DOWNSPOUT FABRICATION DETAILS
A13	LIGHTNING PROTECTION AND DOWNPOUT FABRICATION DETAILS
A14	BID ALTERNATE -METAL ROOFING -TYPICAL DETAILS

CONSTRUCTION DOCUMENTS - 01/26/2024

**SEABREEZE HIGH SCHOOL**  
**REPLACE TLE ROOF AND COAT**  
**FLAT ROOF BLDG. 14**  
VCS Project NO. 2448040

2700 N OLEANDER AVE, DAYTONA BEACH, FL 32118

Architect  
JAMES W. RIPLEY

DESIGNED BY JWR	DRAWN BY TJG
ISSUE DATE 01/26/2024	AE PROJECT NUMBER 23040.00

SHEET TITLE  
COVER SHEET, VICINITY MAP  
AND DRAWING INDEX

DRAWING NO.

G01



1. THE DIMENSIONS SHOWN ON THE PLANS OF THIS PROJECT WERE TAKEN FROM THE OWNER'S ARCHITECTURAL DOCUMENTS OR ARE THE RESULT OF FIELD MEASUREMENTS TAKEN BY A/R/C ASSOCIATES. THIS INFORMATION IS GIVEN TO ASSIST PROSPECTIVE BIDDERS IN ESTABLISHING THE APPROXIMATE SCOPE OF THE PROJECT, AS A PRE-REQUISITE FOR BIDDING THE PROJECT. HOWEVER, ALL DIMENSIONS SHALL BE FIELD VERIFIED BY EACH BIDDER SO THAT THE DIMENSIONS UTILIZED IN BIDDING THE PROJECT WILL BE THOSE DIMENSIONS TAKEN, CONFIRMED OR CORRECTED BY THE BIDDER. THE CONTRACTOR SHALL VERIFY ALL DIMENSIONS, DETAILS, AND EQUIPMENT NOTED AND SHALL NOTIFY THE ARCHITECT OF ANY DISCREPANCIES PRIOR TO PROCEEDING WITH THE WORK.
2. THE PLANS ARE GENERAL IN NATURE & INDICATE APPROXIMATE EXISTING CONDITIONS AT THE PROJECT SITE. ALL BLDGS. ON THE SITE ARE INCLUDED IN THE PROJECT UNLESS SPECIFICALLY NOTED OTHERWISE (N/A). THE CONTRACTOR SHALL BE RESPONSIBLE FOR A VISUAL FIELD SURVEY (PRIOR TO BID) IN REGARD TO QUANTITIES, & VERIFICATION OF CONFORMANCE WITH THE LOCAL BUILDING CODE.
3. PRIOR TO THE START OF ANY WORK, THE CONTRACTOR WITH THE PROJECT ARCHITECT AND OWNER'S REPRESENTATIVE SHALL VISIT THE SITE AND PHOTO AND VIDEO TAPE THE SITE AND ALL SPACES NEARBY THAT MAY BE AFFECTED BY THIS PROJECT IN ORDER TO DETERMINE THE CONTRACTOR'S RESPONSIBILITY IN KEEPING THOSE ITEMS IN THEIR CURRENT STATUS. SPECIAL ATTENTION SHALL BE GIVEN TO CEILING, LIGHT FIXTURES, EXTERIOR AND INTERIOR WALL FINISHES, AND SIDEWALKS, ETC. PARTICULARLY IN THOSE AREAS WHERE EXISTING LEAKS HAVE BEEN DESERVED.
4. ALL MECHANICAL SYSTEMS & INDIVIDUAL COMPONENTS (EQUIPMENT) SHALL BE OPERATED IN THE PRESENCE OF REPRESENTATIVES OF BOTH THE CONTRACTOR AND OWNER PRIOR TO ANY DEMOLITION OR DISCONNECTION OF MECHANICAL FUNCTIONS, IN ORDER TO ESTABLISH WORKING ORDER AND OPERATING CONDITIONS.
5. CONTRACTOR SHALL EXERCISE CARE DURING DEMOLITION AND REMOVAL TO ASSURE THAT ITEMS SCHEDULED FOR DEMOLITION ARE PROPERLY REMOVED AND ITEMS TO REMAIN AND/OR TO BE RELOCATED ARE PROTECTED FROM DAMAGE. ALL SALVAGEABLE ITEMS REMOVED THAT ARE NOT TO BE REUSED SHALL BE DISPOSED OF AS DIRECTED BY THE OWNER.
6. NO EXISTING FACILITY SHALL BE OCCUPIED DURING REMODELING OR RENOVATION UNLESS ALL EXISTING EXITS AND ANY EXISTING FIRE PROTECTION ARE CONTINUOUSLY MAINTAINED, OR IN LIEU THEREOF OTHER MEASURES ARE TAKEN WHICH PROVIDE EQUIVALENT SAFETY.
7. IN THE EVENT OF WATER DAMAGE TO THE INTERIOR OF STRUCTURES, A DAMAGE REPORT, WITH PHOTOGRAPHS SHALL BE COMPLETED BY THE PROJECT ARCHITECT ONCE THEY HAVE BEEN NOTIFIED. THE REPORT SHALL BE SUBMITTED TO THE OWNER AND THE CONTRACTOR FOR THEIR RECORDS.
8. NOTIFY THE LOCAL POLICE OFFICIALS, THE OWNER OR ARCHITECT BY TELEPHONE IN EACH INSTANCE OF PROPERTY DAMAGE RESULTING FROM FIRE, WATER DAMAGE, ILLEGAL ENTRY, VANDALISM, THEFT OR BURGLARY, OR VEHICLE DAMAGE WITHIN 24 HOURS OF DISCOVERING THE INCIDENT.
9. DETAILS REFERENCED ON THE CONTRACT DRAWINGS ARE "TYPICAL" AND ARE NOT CUT AT EVERY LOCATION WHERE THE CONDITION OCCURS. BID AND EXECUTE A COMPLETE PROJECT AS IF DETAILS WERE "CUT" AT EVERY LOCATION WHERE SUCH CONDITION OR SIMILAR CONDITION OCCURS.
10. SHEET METAL DETAILS AND TRANSITIONS NOT SHOWN SHALL BE REQUIRED AS IF SHOWN, PREPARE, AND SUBMIT SHOP DRAWINGS OF THESE REQUIREMENTS TO THE ARCHITECT FOR APPROVAL PRIOR TO SHOP FABRICATION.
11. CONTRACTOR SHALL BE RESPONSIBLE FOR REPAIR AND PAINTING / FINISHING OF ALL SURFACES EXPOSED OR DAMAGED AS A RESULT THE WORK. WORK NOT COVERED BY NEWLY INSTALLED WORK, REPAIRS AND FINISHES SHALL MATCH EXISTING ADJACENT CONDITIONS TO REMAIN UNCHANGED.
12. CONTRACTOR SHALL BE RESPONSIBLE TO REMOVE, REINSTALL, OR REPLACE INTERIOR FINISHES WHICH MAY HAVE BEEN DISTURBED OR DAMAGED DURING THE CONSTRUCTION PROCESS.
13. CONTRACTOR SHALL PROVIDE ALL SUPPLEMENTAL MATERIALS REQUIRED TO PROPERLY INSTALL, SUPPORT AND BRACE ALL ITEMS AND COMPONENTS WITHIN THE WORK.

ADJ	ADJACENT	DIA	DIAMETER	LW	LIGHTWEIGHT	RAD	RADIUS
A/C	AIR CONDITIONING	DIM	DIMENSION	LLH	LONG LEG HORIZONTAL	RUL	RAINWATER LEADER
ALT	ALTERNATE	DS	DOWNSPOUT	LLV	LONG LEG VERTICAL	REF	REFERENCE
ALUM	ALUMINUM	DWG	DRAWING			REINF	REINFORCE (D), (MENT)
ANOD	ANODIZED			MFR	MANUFACTURE(ER)	RCP	REINF. CONCRETE PIPE
APPROX	APPROXIMATE	E	EAST	MATL	MATERIAL(S)	REV	REVISION
ARCH	ARCHITECT(URAL)	ELEC	ELECTRIC(AL)	MAX	MAXIMUM	RD	ROOF DRAIN
		EL (ELEV)	ELEVATION	MECH	MECHANIC(AL)	RO	ROUGH OPENING
BRG	BEARING	EQ	EQUAL	MTL	METAL		
BIT	BITUMINOUS	EQUIP	EQUIPMENT	MIN	MINIMUM	SCH	SCHEDULE
	BITUMEN	EXH	EXHAUST	MISC	MISCELLANEOUS	SEAL	SEALANT
BLK	BLOCK	EXIST	EXISTING	MOD	MODIFY / MODIFIED	SHT	SHEET
BLKG	BLOCKING	EXP	EXPANSION	MTD	MOUNTED(ING)	SIM	SIMILAR
BD	BOARD	EXT	EXTERIOR			S	SOUTH
BOT	BOTTOM			NOM	NOMINAL	SFK	SPEAKER
BLDG	BUILDING	FIN	FINISH(ED)	N	NORTH	SPEC	SPECIFICATION(S)
BUR	BUILT UP ROOF	FLASH	FLASHING	NIC	NOT IN CONTRACT		
		FLEX	FLEXIBLE	NTS	NOT TO SCALE	SQ	SQUARE
CIP	CAST-IN-PLACE	FTG	FOOTING	NO	NUMBER	SF	SQUARE FEET
CB	CATCH BASIN	FDN	FOUNDATION			ST STL	STAINLESS STEEL
CLG	CEILING			OC	ON CENTER(S)	STD	STANDARD
COL	COLUMN	GA	GAGE (GAUGE)	OCEW	ON CENTER EACH WAY	STL	STEEL
COMP	COMPRESS, (ION), (IBLE)	GALV	GALVANIZED	OPG	OPENING	STRUCT	STRUCTURAL
		GUB	GYP(SUM) WALL BOARD	OPP	OPPOSITE		
CONC	CONCRETE			OD	OUTSIDE DIAMETER	THK	THICK(NESS)
CMU	CONCRETE MASONRY UNIT	HDWE	HARDWARE		OUTSIDE DIMENSION	T & G	TONGUE AND GROOVE
CONST	CONSTRUCTION	HVAC	HEATING/VENTILATION /AIR CONDITIONING	FTD	PAIN(ED)	TYP	TYPICAL
CONT	CONTINUOUS OR CONTINUE	HT (HGT)	HEIGHT	FTD	PAIN(ED)		
		HM	HOLLOW METAL	PAIR	PAIR	UNO	UNLESS NOTED OTHERWISE
CJ	CONTROL JOINT	HORIZ	HORIZONTAL	FL	PLATE		
CTR	CENTER			FLYWD	PLYWOOD	VERT	VERTICAL
CF	CUBIC FOOT	INCL	INCLUDE(D), (ING)	PVC	POLYVINYL CHLORIDE		
		ID	INSIDE DIAMETER	P&F	POUNDS PER SQUARE FOOT	WUF	WELDED WIRE FABRIC
DEMO	DEMOLISH, DEMOLITION	INSUL	INSIDE DIMENSION	P&I	POUNDS PER SQUARE INCH	W	WEST
				PC	PRECAST CONCRETE	WM	WIRE MESH
DET	DETAIL	INT	INTERIOR	FT	PRESSURE TREATED	W/	WITH
DIAG	DIAGONAL					W/O	WITHOUT
						WD	WOOD

#### GENERAL NOTES:

1. THIS SCHEDULE AND THE FASTENING METHODS INDICATED HEREIN ARE INTENDED TO ADDRESS TYPICAL CONDITIONS, AND MAY NOT APPLY TO ALL CONDITIONS FOR THIS PROJECT.
2. CONTRACTOR / INSTALLER MUST ALSO REFER TO THE DETAILS FOR THIS SPECIFIC PROJECT. IN THE CASE OF CONFLICTING DATA, THE PROJECT SPECIFIC DETAILS SHALL GOVERN.
3. FOR ALL CONDITIONS NOT COVERED WITHIN SCHEDULE, REFER TO FASTENER REQUIREMENTS OF THE SPECIFICATIONS OR CONSULT WITH THE ARCHITECT.
4. MANUFACTURERS OF SPECIALITY FASTENER SHALL PERFORM FIELD TESTS TO VERIFY WITHDRAWAL VALUES AND FASTENING PATTERNS FOR THE SPECIFIC PROJECT CONDITIONS PRIOR TO INSTALLATION. A WRITTEN REPORT SHALL BE SUBMITTED TO THE ARCHITECT FOR REVIEW AND APPROVAL.
5. ALL EXPOSED FASTENERS AND THOSE USED IN PRESSURE TREATED LUMBER SHALL BE STAINLESS STEEL. ALL OTHERS MUST HAVE A CORROSION RESISTANT COATING THAT EXCEEDS F.M. APPROVAL STANDARD 4410, UNLESS NOTED OTHERWISE.
6. ALL FASTENERS AND THEIR INSTALLATION METHODS MUST COMPLY WITH THE REQUIREMENTS DEFINED IN THE FLORIDA BUILDING CODE, ROOFING APPLICATION STANDARD (RAS) NO. III - "STANDARD REQUIREMENTS FOR ATTACHMENT OF PERIMETER WOOD BLOCKING AND METAL FLASHINGS", UNLESS NOTED OTHERWISE.

#### B. WOOD BLOCKING (2" NOMINAL THICKNESS):

1. CONCRETE: 3/8" DIA. ST. STL. SELF-TAPPING MASONRY SCREW AT 16" O.C. MAX., LENGTH AS REQUIRED FOR 1.75" MIN. EMBEDMENT. OPTION: 5/16" DIA. DEFORMED OR FLUTED NAIL AT 12" O.C. MAX., LENGTH AS REQUIRED FOR 1.25" MIN. EMBEDMENT. COUNTERSINK HEADS AS REQUIRED.
2. CONCRETE BLOCK (CMU): 3/8" DIA. ST. STL. SELF-TAPPING MASONRY SCREW AT 12" O.C. MAX., LENGTH AS REQUIRED FOR 1.75" MIN. EMBEDMENT. OPTION: 3/8" DIA. HEAVY DUTY SLEEVE STYLE EXPANSION BOLT ANCHOR (RAWL-BOLT) @ 18" O.C., LENGTH AS REQUIRED FOR 2" MIN. EMBEDMENT. COUNTER-SINK HEADS AS REQUIRED.
3. BRICK: 3/8" DIA. ST. STL. SELF-TAPPING MASONRY SCREW AT 12" O.C. MAX., LENGTH AS REQUIRED FOR 1.75" MIN. EMBEDMENT. OPTION: 3/8" DIA. HEAVY DUTY SLEEVE STYLE EXPANSION BOLT ANCHOR (RAWL-BOLT) @ 18" O.C., LENGTH AS REQUIRED FOR 2" MIN. EMBEDMENT. COUNTERSINK HEADS AS REQUIRED.
4. STRUCTURAL STEEL: 1/4" DIA. ST. STL. SELF-DRILLING, SELF-TAPPING SCREWS WITH 'WINGS' @ 16" O.C. MAX., LENGTH AS REQUIRED FOR 1/2" MIN. PENETRATION OF THREADS THROUGH STEEL. COUNTERSINK HEADS AS REQUIRED.
5. METAL DECK: 1/4" DIA. ST. STL. SELF-TAPPING 'DECK' SCREWS AT 12" O.C. MAX., LENGTH AS REQUIRED FOR 1/2" MIN. PENETRATION THROUGH UNDERSIDE OF DECK. COUNTERSINK HEADS REQUIRED.
6. LIGHT GAGE METAL FRAMING: 1/4" DIA. ST. STL. SELF-TAPPING 'DECK' SCREWS, ONE MIN. PER FRAMING MEMBER, LENGTH AS REQ'D FOR 1/2" MIN. PENETRATION THROUGH FRAMING. COUNTERSINK HEADS AS REQUIRED.
7. PLYWOOD DECK: 1/4" DIA. ST. STL. SELF-TAPPING 'DECK' SCREWS, ONE MIN. PER FRAMING MEMBER, LENGTH AS REQ'D FOR 1/2" MIN. PENETRATION THROUGH UNDERSIDE OF DECK. COUNTERSINK HEADS AS REQUIRED.
8. WOOD BLOCKING: 1/4" DIA. ST. STL. SELF-TAPPING 'DECK' SCREWS AT 12" O.C. MAX., LENGTH AS REQUIRED FOR 1.50" MIN. EMBEDMENT. OPTION: TWO 3/8" DIA. CONTINUOUS BEADS OF CONSTRUCTION ADHESIVE THE FULL LENGTH OF THE BOARD TO BE APPLIED, 4 1/2" DIA. @ 4" O.C. (IN 2 ROWS-STAGGERED).

#### C. PLYWOOD SHEATHING:

1. CONCRETE: 1/4" DIA. ST. STL. SELF-TAPPING MASONRY SCREWS AT 12" O.C. MAX. (AT EDGES), AND 16" O.C. MAX. IN THE FIELD, LENGTH AS REQUIRED FOR 1.50" MIN. EMBEDMENT. OPTION: 1/4" DIA. DEFORMED OR FLUTED NAIL AT SAME SPACING AS ABOVE, LENGTH AS REQ'D. FOR 1 1/4" MIN. EMBEDMENT.
2. CONCRETE BLOCK (CMU): 1/4" DIA. ST. STL. SELF-TAPPING MASONRY SCREWS AT 12" O.C. MAX. (AT EDGES), AND 16" O.C. MAX. IN THE FIELD, LENGTH AS REQUIRED FOR 1.50" MIN. EMBEDMENT. OPTION: 1/4" DIA. DEFORMED OR FLUTED NAIL AT SAME SPACING AS ABOVE, LENGTH AS REQ'D. FOR 1 1/4" MIN. EMBEDMENT.
3. BRICK: 1/4" DIA. ST. STL. SELF-TAPPING MASONRY SCREWS AT 12" O.C. MAX. (AT EDGES), AND 16" O.C. MAX. IN THE FIELD, LENGTH AS REQUIRED FOR 1.50" MIN. EMBEDMENT. OPTION: 1/4" DIA. DEFORMED OR FLUTED NAIL AT SAME SPACING AS ABOVE, LENGTH AS REQ'D. FOR 1 1/4" MIN. EMBEDMENT.
4. STRUCTURAL STEEL: 1/4" DIA. ST. STL. SELF-DRILLING, SELF-TAPPING SCREWS WITH 'WINGS' AT 12" O.C. MAX. (AT EDGES), AND 16" O.C. MAX. IN THE FIELD, LENGTH AS REQ'D. FOR 1/2" MIN. PENETRATION OF THREADS THROUGH STEEL.
5. METAL DECK: 1/4" DIA. ST. STL. SELF-TAPPING 'DECK' SCREWS AT 12" O.C. MAX. (AT EDGES), AND 16" O.C. MAX. IN THE FIELD, LENGTH AS REQUIRED FOR 1/2" MIN. PENETRATION THROUGH UNDERSIDE OF DECK.
6. LIGHT GAGE METAL FRAMING: 1/4" DIA. ST. STL. SELF-TAPPING 'DECK' SCREWS AT 12" O.C. MAX. (AT EDGES), AND 16" O.C. MAX. ALONG EACH FRAMING MEMBER, LENGTH AS REQ'D FOR 1/2" MIN. PENETRATION THROUGH FRAMING. FRAMING TO BE SPACED AT 24" O.C. MAX., UNLESS NOTED OTHERWISE BY DETAILS.
7. WOOD FRAMING: 1/4" DIA. ST. STL. SELF-TAPPING 'DECK' SCREWS AT 12" O.C. MAX. ALONG EACH FRAMING MEMBER, LENGTH AS REQUIRED FOR 1.50" MIN. EMBEDMENT. OPTION: 80 ANNUAL RING NAILS AT 6" O.C. MAX. (AT EDGES) AND 12" O.C. MAX. IN FIELD OF PANEL. DECREASE SPACING AT ROOF EDGE & CORNER WIND ZONES TO 4" O.C. MAX. AT EDGES, AND 8" O.C. MAX. IN FIELD.

#### D. METAL DECKING:

1. INSTALL AND SECURE PER STEEL JOIST INSTITUTE (SJI) GUIDELINES, SEE SPECIFICATIONS OR STRUCTURAL DETAILS FOR ADDITIONAL INFORMATION.

#### E. MINOR STRUCTURAL STEEL:

1. ANCHORAGE OF LOAD BEARING STEEL AND LARGE STEEL FABRICATIONS, (SUCH AS LADDERS), IS TO BE AS DEFINED BY STRUCTURAL ENGINEERING DRAWINGS, OR AS ENGINEERED BY THE SUPPLIER. MINOR STRUCTURAL STEEL WOULD BE CONSIDERED ITEMS SUCH AS SUPPORT STANDS, WALL LEDGER ANGLES, ETC.

#### F. CONCRETE:

1. CONCRETE: 3/8" DIA. HEAVY-DUTY, SLEEVE STYLE EXPANSION BOLT ANCHOR (RAWL-BOLT) @ 16" O.C., LENGTH AS REQ'D FOR 2" MIN. EMBEDMENT.

#### G. CONCRETE BLOCK (CMU):

1. CONCRETE BLOCK (CMU): 3/8" DIA. HEAVY-DUTY SLEEVE STYLE EXPANSION BOLT ANCHOR (RAWL-BOLT) @ 16" O.C., LENGTH AS REQUIRED FOR 2" MIN. EMBEDMENT. IF CMU IS HOLLOW, BREAK INTO BLOCK ABOVE, AND FILL CELL OF BLOCK TO RECEIVE ANCHOR SOLID, PERFORM ANY REPAIR AND PATCHING NECESSARY.

#### H. BRICK:

1. BRICK: 3/8" DIA. HEAVY-DUTY, SLEEVE STYLE EXPANSION BOLT ANCHOR (RAWL-BOLT) @ 16" O.C., LENGTH AS REQ'D FOR 2" MIN. EMBEDMENT.

#### I. STRUCTURAL STEEL:

1. STRUCTURAL STEEL: 1/4" DIA. ST. STL. SELF-DRILLING, SELF-TAPPING SCREWS @ 16" O.C. MAX., LENGTH AS REQUIRED FOR 1/2" MIN. PENETRATION OF THREADS THROUGH STEEL.

#### J. RIGID INSULATION BOARD:

1. INSTALL AND SECURE PER THE MANUFACTURER'S RECOMMENDATIONS, TESTING AND APPROVALS TO COMPLY WITH THE DESIGN REQUIREMENTS OF THIS PROJECT. SEE PROJECT SPECIFICATIONS AND FASTENING DETAIL FOR ADDITIONAL INFORMATION.

#### K. ROOF MEMBRANE SYSTEM:

1. INSTALL AND SECURE PER THE MANUFACTURER'S RECOMMENDATIONS, TESTING AND APPROVALS TO COMPLY WITH THE DESIGN REQUIREMENTS OF THIS PROJECT. SEE PROJECT SPECIFICATIONS AND FASTENING DETAIL FOR ADDITIONAL INFORMATION.

#### L. FLANGED SHEETMETAL (EDGE METAL):

1. WOOD BLOCKING: #12 GAGE x 150" ANNUAL RING STAINLESS STEEL ROOFING NAILS AT 4" O.C. MAX., STAGGERED IN 2 ROWS INSET AT 3/4" FROM EACH EDGE OF THE FLANGE.
2. LIGHTGAGE METAL: #10 DIA. STAINLESS STEEL, SELF TAPPING, WAFER OR FLAT HEAD SCREWS AT 12" O.C. MAX., 8" O.C. WITHIN ROOF CORNER ZONES, LENGTH AS REQUIRED FOR 1/2" MIN. PENETRATION OF THREADS THROUGH STEEL.
3. CONCRETE: 3/16" DIA. ST. STL. SELF-DRILLING, SELF-TAPPING, MASONRY SCREW, LENGTH AS REQUIRED FOR 1.50" MIN. EMBEDMENT. OPTION: 1/4" DIA. x 150" LONG ZAMAC 'NAIL-IN' DRIVE PIN, EXPANSION TYPE FASTENER WITH A STAINLESS STEEL DRIVE PIN. INSTALL AT 12" O.C. MAX., 8" O.C. WITHIN ROOF CORNER ZONES.

#### M. CLEATS FOR SHEETMETAL FLASHINGS:

1. WOOD BLOCKING: #12 GAGE x 150" ANNUAL RING, STAINLESS STEEL ROOFING NAILS AT 8" O.C. MAX., (4" O.C. AT CORNER ZONES OF ROOF)
2. LIGHTGAGE METAL: #10 DIA. STAINLESS STEEL, SELF TAPPING, WAFER OR FLAT HEAD SCREWS, LENGTH AS REQ'D FOR 1/2" MIN. PENETRATION OF THREADS THROUGH STEEL, LOCATE AT 10" O.C. MAX., 6" O.C. WITHIN ROOF CORNER ZONES.
3. CONCRETE: 3/16" DIA. ST. STL. SELF-DRILLING, SELF-TAPPING, MASONRY SCREW, LENGTH AS REQUIRED FOR 1.50" MIN. EMBEDMENT. OPTION: 1/4" DIA. x 150" LONG ZAMAC 'NAIL-IN' DRIVE PIN, EXPANSION TYPE FASTENER WITH A STAINLESS STEEL DRIVE PIN. INSTALL AT 10" O.C. MAX., 6" O.C. WITHIN ROOF CORNER ZONES.
4. CONCRETE BLOCK (CMU): 3/16" DIA. ST. STL. SELF-DRILLING, SELF-TAPPING, MASONRY SCREW, LENGTH AS REQUIRED FOR 1.50" MIN. EMBEDMENT. OPTION: 1/4" DIA. x 150" LONG ZAMAC 'NAIL-IN' DRIVE PIN, EXPANSION TYPE FASTENER WITH A STAINLESS STEEL DRIVE PIN. INSTALL AT 10" O.C. MAX., 6" O.C. WITHIN ROOF CORNER ZONES.
5. BRICK: 1/4" DIA. ST. STL. SELF-DRILLING, SELF-TAPPING, MASONRY SCREW, LENGTH AS REQUIRED FOR 1.50" MIN. EMBEDMENT. OPTION: 1/4" DIA. x 150" LONG ZAMAC 'NAIL-IN' DRIVE PIN, EXPANSION TYPE FASTENER WITH A STAINLESS STEEL DRIVE PIN. INSTALL AT 10" O.C. MAX., 6" O.C. WITHIN ROOF CORNER ZONES.

#### N. APPLIED SHEETMETAL (COUNTERFLASHINGS, ETC.):

1. WOOD BLOCKING: #12 DIA. SELF-TAPPING, STAINLESS STEEL SCREWS AT 8" O.C. MAX., LENGTH AS REQUIRED FOR 1.25" MIN. EMBEDMENT INTO WOOD. IF EXPOSED TO THE WEATHER, USE 'SCOTS' TYPE SCREW WITH INTEGRAL NEOPRENE SEALING WASHER.
2. SHEETMETAL BACKING: #12 DIA. SELF-TAPPING STAINLESS STEEL SCREWS AT 8" O.C. MAX., LENGTH AS REQ'D FOR 1/2" MIN. PENETRATION OF THREADS THROUGH STEEL. IF EXPOSED TO THE WEATHER PROVIDE 'SCOTS' TYPE SCREW WITH INTEGRAL NEOPRENE SEALING WASHER.
3. CONCRETE: 1/4" DIA. SELF-TAPPING STAINLESS STEEL MASONRY SCREWS AT 8" O.C. MAX., LENGTH AS REQUIRED FOR 1 1/4" MIN. EMBEDMENT. OPTION: 1/4" DIA. x 150" ZAMAC 'NAILIN' DRIVE PIN, EXPANSION TYPE FASTENERS @ 8" O.C. MAX., WITH STAINLESS STEEL DRIVE PIN. IF EXPOSED TO THE WEATHER PROVIDE METAL BACKED NEOPRENE SEALING WASHERS - ADJUST LENGTH AS REQ'D BY OVERLYING FINISH TO MAINTAIN 1.25" MIN. EMBEDMENT INTO CONCRETE.
4. CONCRETE BLOCK (CMU): 1/4" DIA. SELF-TAPPING STAINLESS STEEL MASONRY SCREWS AT 8" O.C. MAX., LENGTH AS REQUIRED FOR 1.25" MIN. EMBEDMENT. OPTION: 1/4" DIA. x 150" ZAMAC 'NAILIN' DRIVE PIN, EXPANSION TYPE FASTENERS @ 8" O.C. MAX., WITH STAINLESS STEEL DRIVE PIN. IF EXPOSED TO THE WEATHER PROVIDE METAL BACKED NEOPRENE SEALING WASHERS - INCREASE LENGTH IF REQ'D BY OVERLYING FINISH FOR 1.25" MIN. EMBEDMENT INTO CONCRETE BLOCK.
5. BRICK: 1/4" DIA. SELF-TAPPING STAINLESS STEEL MASONRY SCREWS AT 8" O.C. MAX., LENGTH AS REQUIRED FOR 1.25" MIN. EMBEDMENT. OPTION: 1/4" DIA. x 150" ZAMAC 'NAILIN' DRIVE PIN, EXPANSION TYPE FASTENERS @ 8" O.C. MAX., WITH STAINLESS STEEL DRIVE PIN. IF EXPOSED TO THE WEATHER PROVIDE METAL

[illegible]

**SEABREEZE HIGH SCHOOL  
REPLACE TLE ROOF AND COAT  
FLAT ROOF BLDG. 14**

VCS Project NO. 2448040

2700 N OLEANDER AVE, DAYTONA BEACH, FL 32118

<b>Architect</b> <b>JAMES W. RIPLEY</b>		ARCHITENOR OF RECORD
DESIGNED BY <b>JWR</b>	DRAWN BY <b>TJG</b>	
ISSUE DATE <b>01/26/24</b>	AE PROJECT NUMBER <b>23040.00</b>	
SHEET TITLE <b>GENERAL ROOFING          NOTES, ROOF COMPONENT          FASTENING SCHEDULE, AND          ABBREVIATIONS</b>		

G02









**A/R/C**  
**Associates**  
**Inc.**  
**Architecture**  
**and Consulting**  
**Construction Technology**  
NBR AR-000768  
North Fern Creek Avenue  
Suite 100 Orlando, FL  
32803-4899  
Tel. (407) 896-7875  
Fax. (407) 898-6043  
© 2004 A/R/C ASSOCIATES



01/26/2024  
JAMES W. RIPLEY  
AR0012758

[illegible]

**SEABREEZE HIGH SCHOOL**  
**REPLACE TLE ROOF AND COAT**  
**FLAT ROOF BLDG. 14**  
VCS Project NO. 2448040

22700 N OLEANDER AVE, DAYTONA BEACH, FL 32118

CHENGR OF RECORD

Architect  
JAMES W. RIPLEY

DESIGNED BY  
WR

RAWN BY  
TJG

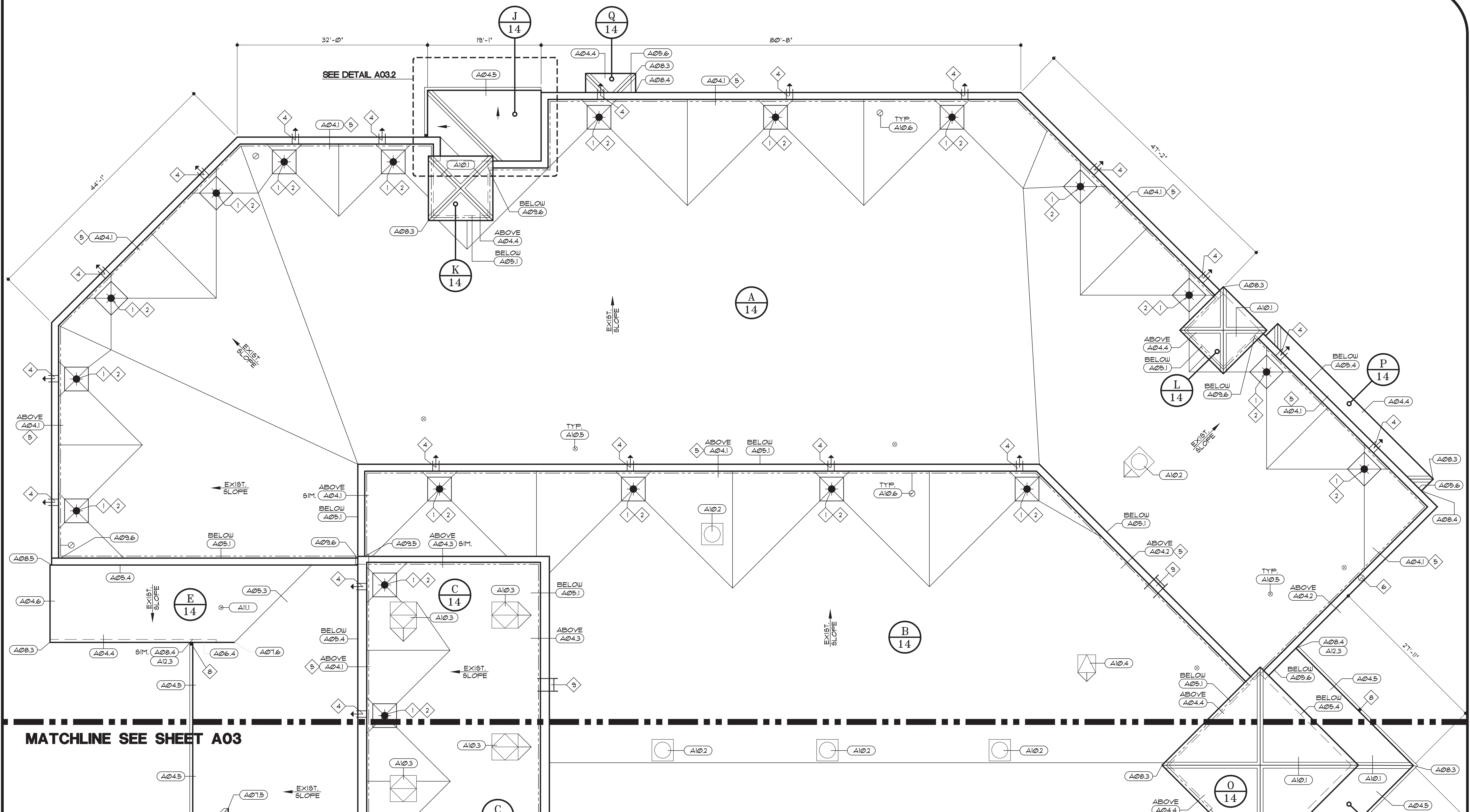
1/26/24

PROJECT NUMBER  
23040.00

AUDITORIUM PARTIAL  
ROOF PLAN - NORTHEAST  
AND NOTES

DRAWING NO.

A02



**A02.1 AUDITORIUM PARTIAL ROOF PLAN - NORTHEAST**  
SCALE: 1/8" = 1'-0"

- 1 REMOVE & REPLACE EXISTING ROOF DRAIN AT EXIST. LOCATION. MATCH EXIST. DRAIN SIZE. (1/2" DIA.) NEW 4/0" X 4/0" X 3/4" PER FOOT TAPERED SUMP AT DRAIN. RECONNECT TO THE EXISTING LEADER PIPING BELOW DECK. SEE DETAIL A11.2.
- 2 ROD, BLOW OR SNAKE ALL EXISTING ROOF DRAIN LEADER LINES TO ENSURE THEY ARE CLEAR AND FULLY FUNCTIONAL. CHARGE INFLATOR TO INFORM OWNER OF ANY DRAINAGE PROBLEMS DISCOVERED.
- 3 EXISTING OVERFLOW PIPE DRAIN TO REMAIN - APPLY NEW FLASHING PER DETAIL A11.3.
- 4 EXISTING SCUPPER FABRICATION TO REMAIN. FLASH PER DETAIL A11.4. INSTALL NEW PRE-FIN ALUMINUM ESCUTCHEON PLATE ALONG EXTERIOR OPENING - SEE DETAIL A11.5.

- 5 REMOVE AND STORE EXIST. LIGHTNING PROTECTION SYSTEM. REIN. ALUM. AFTER NEW ROOF SYSTEM IS IN PLACE. SEE DETAILS A133 THRU A135. REPLACE ANY DAMAGED EQUIPMENT. SEE SPECS 16670.
- 6 EXISTING LIGHTNING PROTECTION DOWNLEAD AT COPING TO REMAIN. APPLY A LIQUID APPLIED FLASHING AT PENETRATION.
- 7 INSTALL NEW DOWNSPOUT AT EXISTING LOCATION - SEE DETAIL A123.
- 8 INSTALL NEW DOWNSPOUT AT EXISTING LOCATION. REMOVE AND RE-INSTALL EXISTING METAL SLEEVE TO CONNECT DOWNSPOUT TO INTERNAL LEADERLINE - SEE DETAIL A124.

9. EXISTING ROOF DECK ACCESS LADDERS TO REMAIN. PARTIALLY REMOVE AND REINSTALL TO APPLY NEW RECOVERY SYSTEM. RAISE A MIN. 2" ABOVE COPING. REWORK SUPPORT BRACKETS AS REQUIRED TO AVOID COPING. REFURBISH DUE TO CORROSION - CLEAN, TREAT, PRIME AND PAINT WITH CORROSION RESISTANT EPOXY PAINT.

	PARAPET WALL		SANITARY VENT		ROOF DRAIN W/ NEW SUMP
	ROOF EDGE		PIPE PENETRATION		EXIST. OVERFLOW DRAIN
	GUTTER W/ DOWNSPOUT		LIGHTNING PROTECTION		SPECIFIC NOTE
	TYPICAL GUTTER WITH EXPANSION JOINT		1/2 FT CURB & INSIDE CORNERS		ROOF AREA IDENTIFICATION
	OVERFLOW SCUPPER		GRAVITY VENT		SPECIFIC NOTE TAG
	LIGHTNING PROTECTION		ROOF HATCH		
	AREA DIVIDER				
	TAPER LINE				
	BUILDING BELOW				









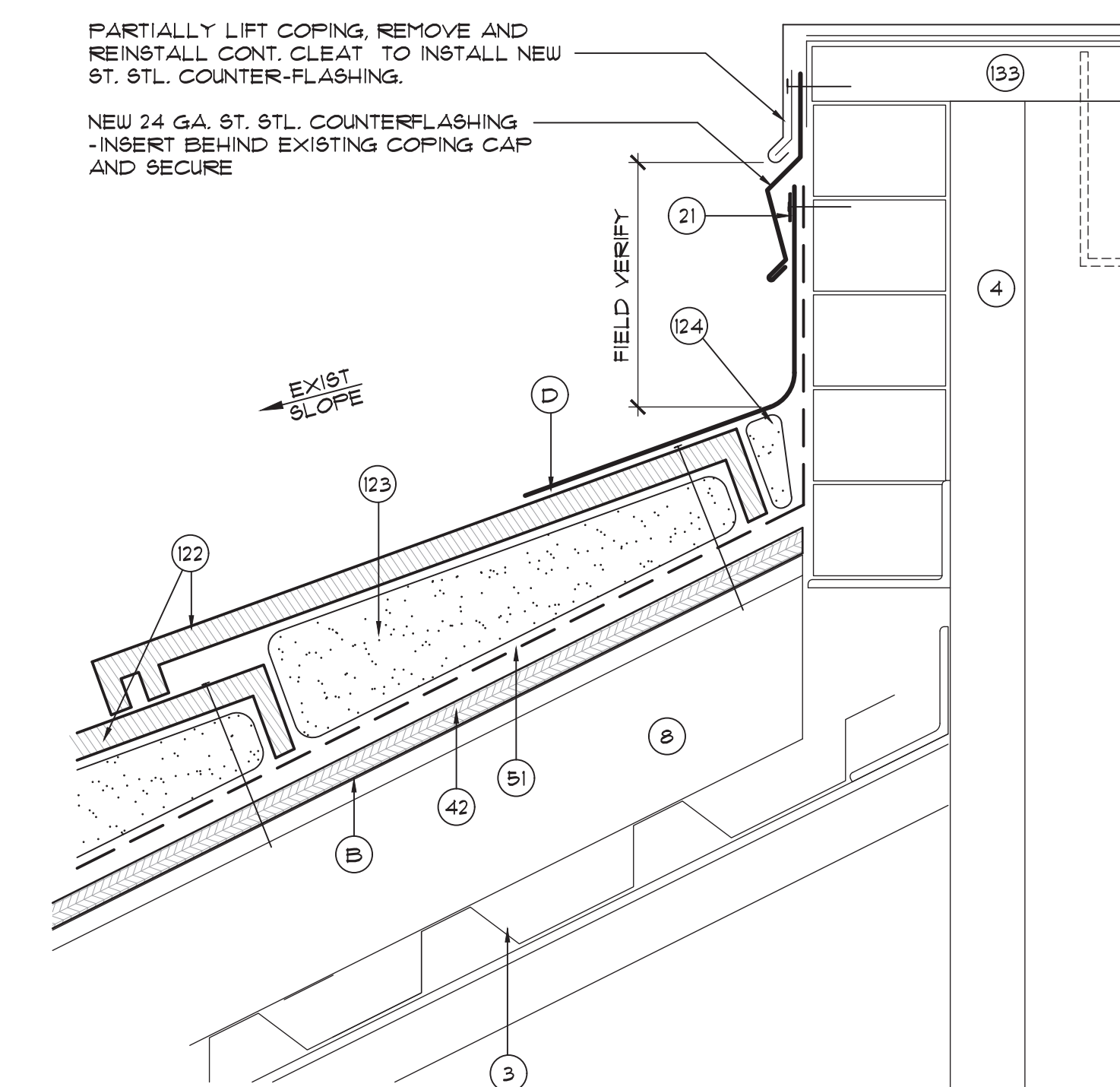
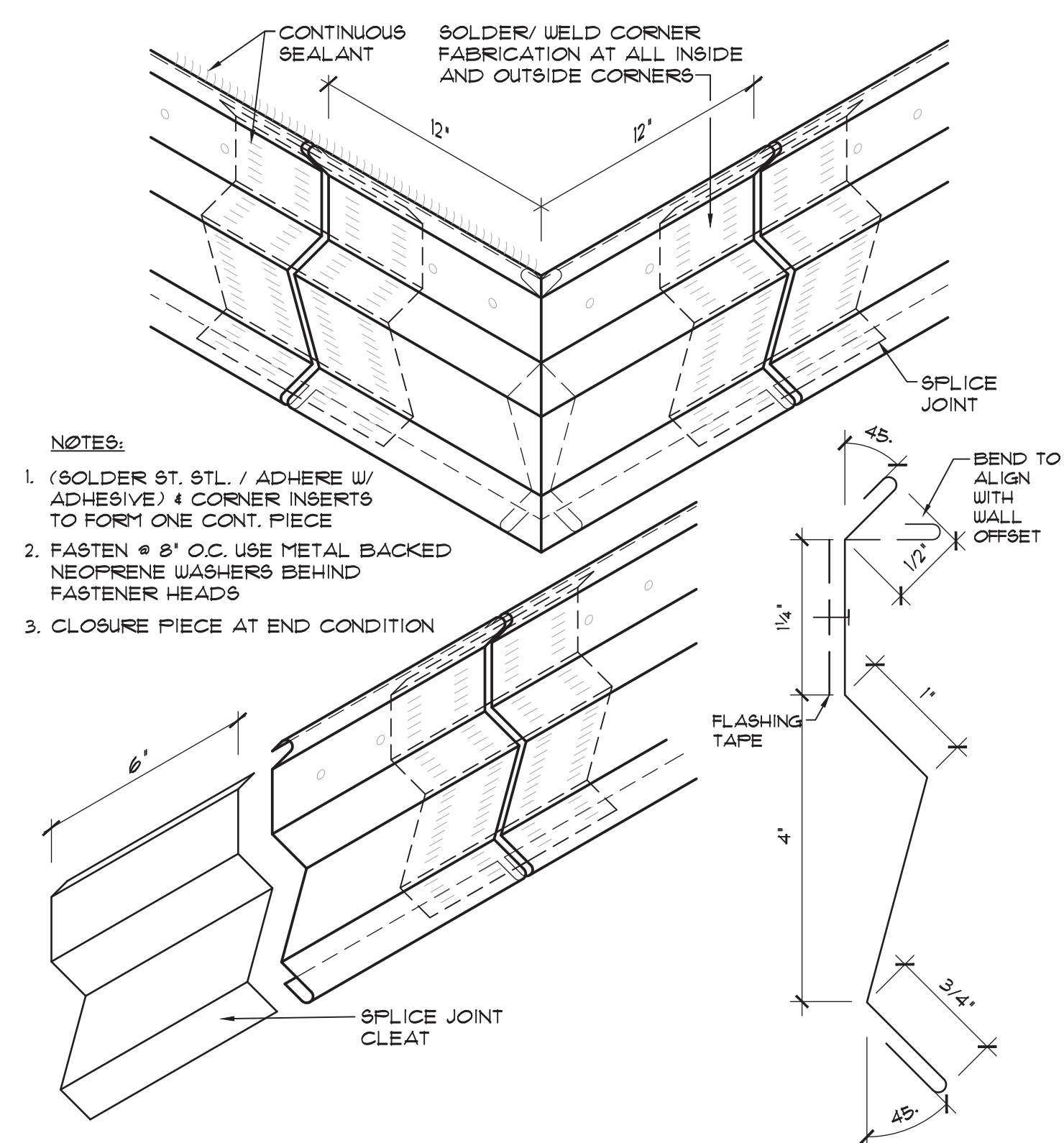
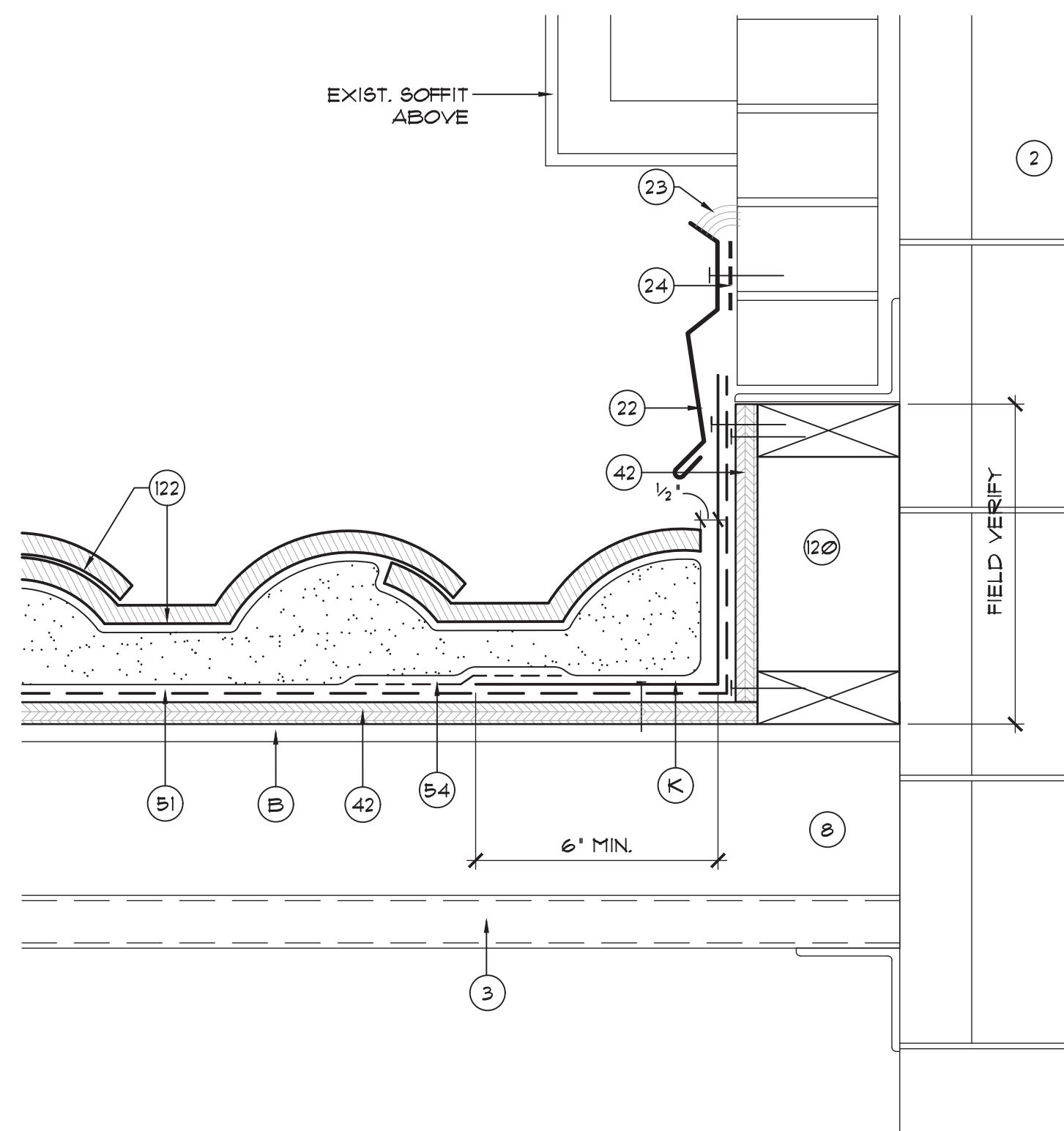
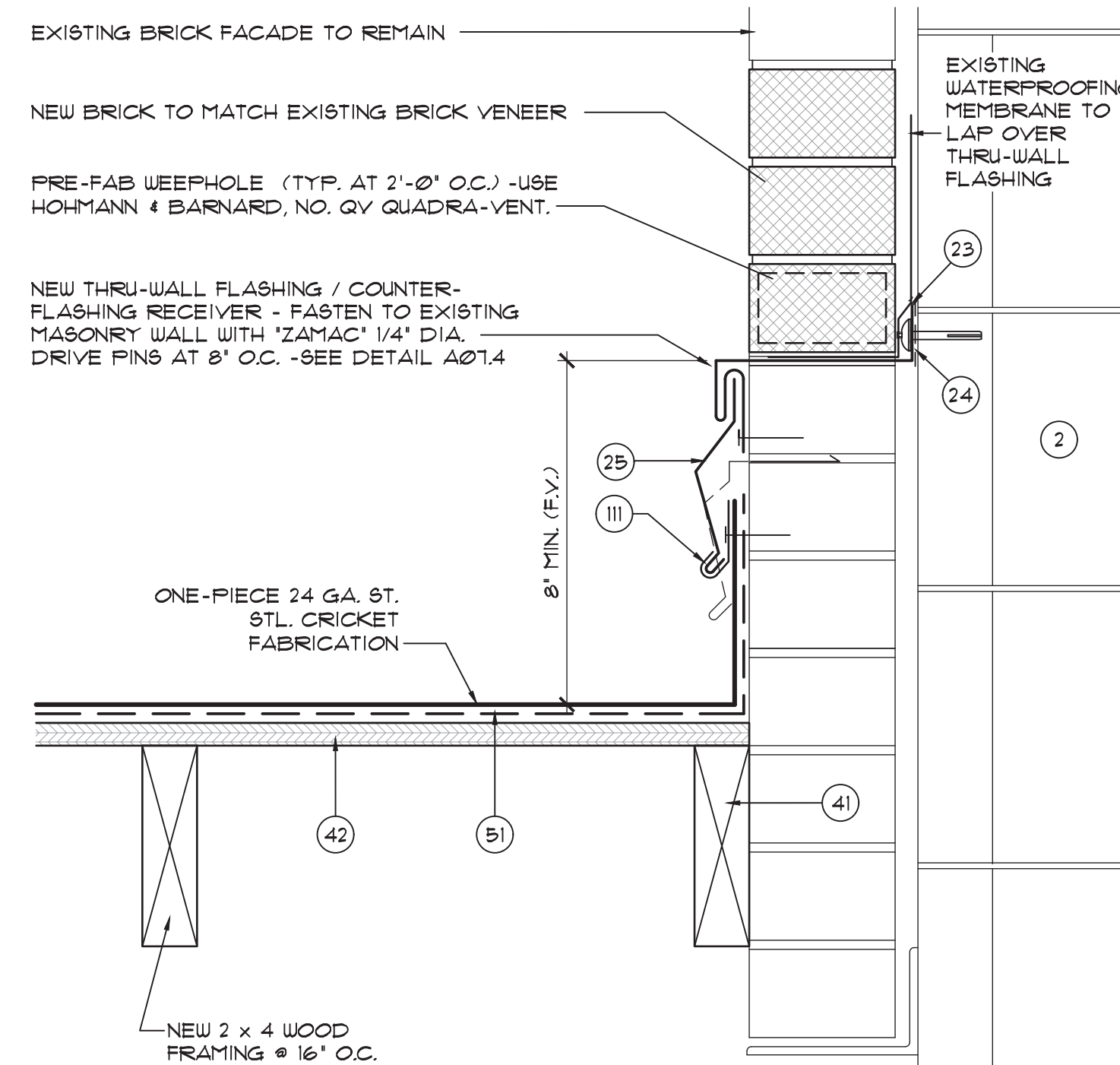
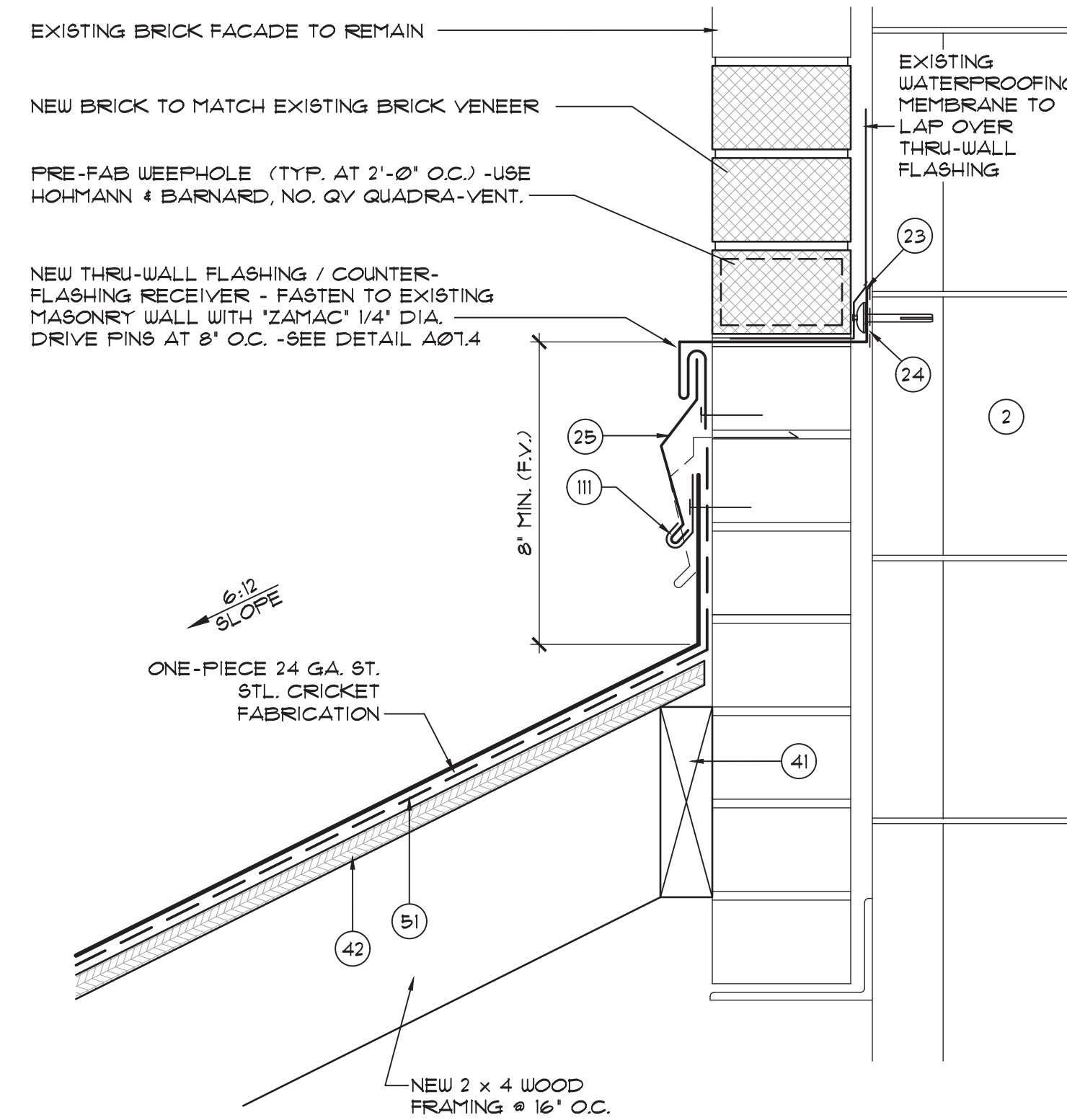
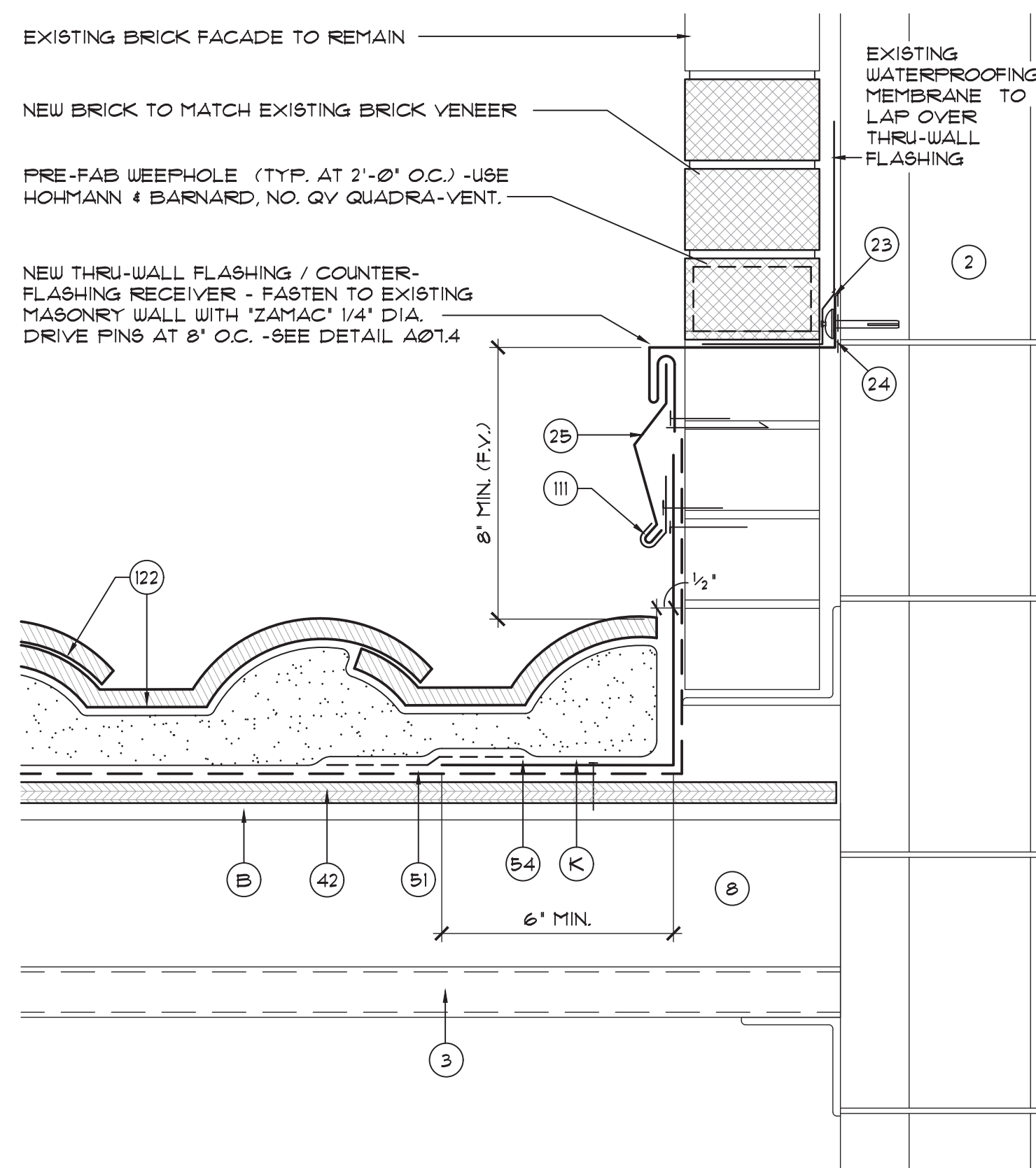




2. EXISTING WALL CONSTRUCTION TO REMAIN UNCHANGED.
3. EXISTING STRUCTURAL DECK TO REMAIN, SEE SCHEDULE FOR DECK TYPE.
4. EXISTING PARAPET WALL CONSTRUCTION TO REMAIN UNCHANGED.
6. EXISTING ROOF MEMBRANE SYSTEM TO REMAIN UNCHANGED, REPAIR AS DEFINED UNDER THE UNIT PRICE ALLOWANCES.
8. EXISTING NON-TAPERED RIGID INSULATION BOARD TO REMAIN UNCHANGED, REPLACE ANY WET INSULATION (SEE INFRARED REPORT) AS DEFINED UNDER THE UNIT PRICE ALLOWANCES.
9. EXISTING MECHANICAL EQUIPMENT - REMOVE AND REINSTALL AS REQUIRED.
10. EXISTING CURB CONSTRUCTION TO REMAIN AND BE REUSED AS DETAILED.
20. NEW 1/4" THICK GYPSUM ROOF COVERBOARD PER SPECIFICATIONS.
21. CONTINUOUS SURFACE APPLIED ALUM. TERMINATION BAR -SEE DETAIL A13.6.
22. CONT. SURFACE MOUNTED COUNTERFLASHING - SEE DETAILS A052/A06.5
23. SEALANT PER SPECIFICATIONS - CONTINUOUS TOOLED BEAD (UNO.)
24. CONTINUOUS DOUBLE-SIDED BUTYL FLASHING TAPE PER SPECIFICATIONS.
25. CONTINUOUS RECEIVER MOUNTED COUNTERFLASHING -SEE DETAIL A07.4.
26. 22 GA. ST. STL. OR 0.050" ALUM. CONTINUOUS CLEAT -SEE DETAIL AS NOTED.
27. NEW KYNAR PREFINISHED 0.050" ALUM. GUTTER - SEE DETAIL A11.6
28. EXISTING SCUPPER FABRICATION TO REMAIN, MODIFIED AS DETAILED.
39. NEW ALUMINUM 2" x 1/8" GUTTER BRACKETS AT 2'-6" O.C. -PRIME AND PAINT TO MATCH GUTTER FINISH.
40. EXISTING VENT STACK (VTR) -INSTALL EXTENSION AS / IF REQUIRED.
41. NEW 2 x P.T. WOOD BLOCKING -ANCHOR PER FASTENING SCHEDULE (G02).
42. NEW 5/8" CDX PLYWOOD -ANCHOR PER FASTENING SCHEDULE (DUG. G02).
44. NEW CAST IRON ROOF DRAIN -ADJUST ELEVATION ABOVE DECK IN FIELD.
47. CONTINUOUS FOAM BACKER ROD FOR SEALANT -FIELD VERIFY SIZE NEEDED
48. REMOVE EXISTING RIGID INSULATION AS REQUIRED TO CREATE A 4 FOOT SQUARE, 3/4" PER FOOT SLOPED BUMP AT DRAIN FROM TAPERED RIGID INSULATION WITH GYP. COVER BOARD -SEE DETAIL A12.
51. SELF-ADHESIVE MODIFIED BITUMEN UNDERLAYMENT MEMBRANE SYSTEM, TWO LAYER PHASED APPLICATION PER SPECS.
54. SMOOTH SBS MODIFIED BITUMEN STRIP-IN FLASHING MEMBRANE.
56. GRANULE SURFACED SBS MODIFIED BITUMEN MEMBRANE CAP FLASHING.
57. CONTINUOUS NON-COMBUSTIBLE METAL OR FIBER CANT PER SPECS.
58. SMOOTH SURFACED SBS MOD. BIT. MEMBRANE FLASHING INTERPLY SHEET.
59. KYNAR PRE-FIN. 0.040" ALUM. VALLEY METAL -SEE DETAIL A05.3.
61. KYNAR PREFINISHED 0.040" ALUM. DRIP EDGE FLASHING -SEE DETAIL A08.1
62. 4" PREFORMED LEAD FLASHING 'BOOT' -ROLL OVER AND DOWN INTO PIPE WITHOUT TEARING AS SHOWN, PRIME AS REQUIRED.
63. 36' SQUARE, 4" LEAD FLASHING SHEET AT ROOF DRAIN, PRIME AS REQ'D.
65. GRANULE SURFACED SBS MODIFIED BITUMEN CAP SHEET AT FIELD OF ROOF.
78. SMOOTH SURFACED SBS MOD. BIT. INTERPLY MEMBRANE PER SPECS.
106. PROVIDE 3" (MIN.) LAP JOINT WITH DOUBLE ROWS OF CONT. SEALANT.
111. NEW 3" WIDE RETAINER CLEAT @ 18" O.C. MAX. WITH 2 FASTENERS MIN. - BEND UP IN FIELD TO SECURE COUNTER FLASHING.
120. WOOD CURB FROM 2 x 4 STUDS / FRAMING @ 16" O.C. -FIELD VERIFY HEIGHT.
121. 24 GA. GALV. STL. CONT. BLOCKING FOR TILE ANCHORAGE AT HIP, RIDGE & RAKE EDGE - SEAL TO UNDERLAYMENT AND ANCHOR WITH #2 x 2" ST. STL. SCREWS AT 12" O.C. ON EACH SIDE.
122. CONCRETE ROOF TILE -INSTALL PER MANUFACTURER'S INSTRUCTIONS
123. BUILDING CODE AND TILE MANUFACTURER APPROVED FOAM TILE ADHESIVE -APPLY PER MANUFACTURER'S DIRECTIONS AND PRODUCT APPROVALS.
124. NATURAL COLOR MORTAR -APPLY PER MANUFACTURER'S DIRECTIONS.
133. EXIST. P.T. WOOD BLOCKING OR TRIM TO REMAIN, IF EXPOSED, REPLACE IN 'LIKE-KIND' WHERE DAMAGED OR DETERIORATED PER UNIT PRICES.
138. MFR'S APPROVED FABRIC REINFORCED LIQUID APPLIED FLASHING SYSTEM TO SEAL METAL TO-MEMBRANE JOINT.
149. 26 GA. ST. STL. CONICAL SEALANT COVER -FRICTION FIT IN FIELD & SECURE.
170. APPROVED MFR'S TROUVEABLE MODIFIED BITUMEN MASTIC 4/OR ADHESIVE.
- A. SIDE MOUNTED BASE FOR LIGHTNING PROTECTION AIR TERMINAL OR CABLE, SECURE TO VERTICAL FACE OF FLASHING WITH EPOXY ADHESIVE.
- B. EXISTING GYPSUM COVERBOARD TO REMAIN -REPLACE IN 'LIKE-KIND' WHERE DAMAGED OR DETERIORATED PER UNIT PRICE ALLOWANCES.
- C. NEW TAPERED RIGID INSULATION CRICKET AT 3/8" PER FOOT MIN. SLOPE
- D. LEAD FREE SELF-ADHERED SHEET FLASHING 'WAKAFLEX'.
- E. TWO-LAYERS OF SELF-ADHERED MODIFIED BITUMEN UNDERLAYMENT.
- F. MFR'S STD. NON-CORROSIVE CONTINUOUS METAL EAVE CLOSURE PIECE.
- G. EXISTING PRE-FINISHED METAL WALL PANEL TO REMAIN UNCHANGED.
- H. NEW ST. STL. COUNTERFLASHING -INSERT UP AND BEHIND EXISTING COPING CAP AND SECURE -SIMILAR TO DETAIL A06.5, FIELD VERIFY DIMENSIONS.
- J. 1/4" DIA. ST. STL. SCREW WITH NEOPRENE BACKED METAL SEALING WASHERS @ 8" ON CENTER -SEE FASTENER SCHEDULE, DWG. G02.
- K. 24 GA. CONT. ST. STL. ANGLE FLASHING PER TILE MFR'S RECOMMENDATIONS.
- L. #12 x 2" LONG ST. STL. SCREW WITH NEOPRENE SEALING WASHER @ 12" O.C. MAX. (TWO MIN PER EACH SIDE OF CURB).
- M. ST. STL. FLASHING SLEEVE WITH INTEGRAL DECK FLANGE AND COLLAR WITH CONICAL SEALANT COVER -INSTALL EITHER 1 OR 2-PC. 24 GA SOLDERED SEVE - USE SBC INDUSTRIES MODEL FL/D 4 FL/S (ROUND), SQT/D 4 SQT/S (SQUARE), OR APPROVED EQUAL.
- N. WRAP ROOF DRAIN BOWL AND LEADER PIPE WITH INSULATION FOR FIRST 10 FEET (MINIMUM) OF PIPE RUN -SEE SPECIFICATIONS.
- O. 1/4" DIA. x 2" LG. 'RAUL' Z'NAC NAIL-IN WITH ST. STL. DRIVE PIN @ 4" O.C.





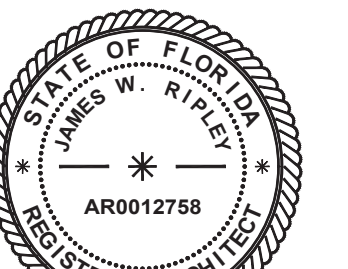


- ## DETAIL NOTES

2. EXISTING WALL CONSTRUCTION TO REMAIN UNCHANGED.
3. EXISTING STRUCTURAL DECK TO REMAIN, SEE SCHEDULE FOR DECK TYPE.
4. EXISTING PARAPET WALL CONSTRUCTION TO REMAIN UNCHANGED.
6. EXISTING ROOF MEMBRANE SYSTEM TO REMAIN UNCHANGED, REPAIR AS DEFINED UNDER THE UNIT PRICE ALLOWANCES.
8. EXISTING NON-TAPERED RIGID INSULATION BOARD TO REMAIN UNCHANGED, REPLACE ANY WET INSULATION (SEE INFRARED REPORT) AS DEFINED UNDER THE UNIT PRICE ALLOWANCES.
9. EXISTING MECHANICAL EQUIPMENT - REMOVE AND REINSTALL AS REQUIRED.
10. EXISTING CURB CONSTRUCTION TO REMAIN AND BE REUSED AS DETAILED.
20. NEW 1/4" THICK GYPSUM ROOF COVERBOARD PER SPECIFICATIONS.
21. CONTINUOUS SURFACE APPLIED ALUM. TERMINATION BAR - SEE DETAIL A19.6.
22. CONT. SURFACE MOUNTED COUNTERFLASHING - SEE DETAILS A05.2/A06.5
23. SEALANT PER SPECIFICATIONS - CONTINUOUS TOOLED BEAD (UNO.)
24. CONTINUOUS DOUBLE-SIDED BUTYL FLASHING TAPE PER SPECIFICATIONS.
25. CONTINUOUS RECEIVER MOUNTED COUNTERFLASHING - SEE DETAIL A07.4.
32. 22 GA. ST. STL. OR 0050" ALUM. CONTINUOUS CLEAT - SEE DETAIL AS NOTED.
34. NEW KYNAR PREFINISHED 0050" ALUM. GUTTER - SEE DETAIL A11.6
38. EXISTING SCUPPER FABRICATION TO REMAIN, MODIFIED AS DETAILED.
39. NEW ALUMINUM 2" x 1/8" GUTTER BRACKETS AT 2'-6" O.C. - PRIME AND PAINT TO MATCH GUTTER FINISH.
40. EXISTING VENT STACK (VTR) - INSTALL EXTENSION AS / IF REQUIRED.
41. NEW 2 x P.T. WOOD BLOCKING - ANCHOR PER FASTENING SCHEDULE (G02).
42. NEW 5/8" CDX PLYWOOD - ANCHOR PER FASTENING SCHEDULE (DUG. G02).
44. NEW CAST IRON ROOF DRAIN - ADJUST ELEVATION ABOVE DECK IN FIELD.
41. CONTINUOUS FOAM BACKER ROD FOR SEALANT - FIELD VERIFY SIZE NEEDED
46. REMOVE EXISTING RIGID INSULATION AS REQUIRED TO CREATE A 4 FOOT SQUARE, 3/4" PER FOOT SLOPED SUMP AT DRAIN FROM TAPERED RIGID INSULATION WITH GYP. COVER BOARD - SEE DETAIL A12.
51. SELF-ADHERED MODIFIED BITUMEN UNDERLAYMENT MEMBRANE SYSTEM, TWO LAYER PHASED APPLICATION PER SPECS.
54. SMOOTH SBS MODIFIED BITUMEN STRIP-IN FLASHING MEMBRANE.
56. GRANULE SURFACED SBS MODIFIED BITUMEN MEMBRANE CAP FLASHING.
57. CONTINUOUS NON-COMBUSTIBLE METAL OR FIBER CANT PER SPECS.
58. SMOOTH SURFACED SBS MOD. BIT. MEMBRANE FLASHING INTERPLY SHEET.
61. KYNAR PRE-FIN. 0040" ALUM. VALLEY METAL - SEE DETAIL A05.3.
61. KYNAR PREFINISHED 0040" ALUM. DRIP EDGE FLASHING - SEE DETAIL A06.1
62. 4" PREFORMED LEAD FLASHING "BOOT" - ROLL OVER AND DOWN INTO PIPE WITHOUT TEARING AS SHOWN, PRIME AS REQUIRED.
63. 36" SQUARE, 4" LEAD FLASHING SHEET AT ROOF DRAIN, PRIME AS REQ'D.
64. GRANULE SURFACED SBS MODIFIED BITUMEN CAP SHEET AT FIELD OF ROOF.
71. SMOOTH SURFACED SBS MOD. BIT. INTERPLY MEMBRANE PER SPECS.
106. PROVIDE 3' (MIN.) LAP JOINT WITH DOUBLE ROUS OF CONT. SEALANT.
111. NEW 3" WIDE RETAINER CLEAT @ 18" O.C. MAX. WITH 2 FASTENERS MIN. - BEND UP IN FIELD TO SECURE COUNTER FLASHING.
120. WOOD CURB FROM 2 x 4 STUDS / FRAMING @ 16" O.C. - FIELD VERIFY HEIGHT.
- 24 GA. GALV. STL. CONT. BLOCKING FOR TILE ANCHORAGE AT HIP, RIDGE & RAKE EDGE - SEAL TO UNDERLAYMENT AND ANCHOR WITH #2 x 2" ST. STL. SCREWS AT 12" O.C. ON EACH SIDE.
122. CONCRETE ROOF TILE - INSTALL PER MANUFACTURER'S INSTRUCTIONS
123. BUILDING CODE AND TILE MANUFACTURER APPROVED FOAM TILE ADHESIVE - APPLY PER MANUFACTURER'S DIRECTIONS AND PRODUCT APPROVALS.
124. NATURAL COLOR MORTAR - APPLY PER MANUFACTURER'S DIRECTIONS.
133. EXIST. P.T. WOOD BLOCKING OR TRIM TO REMAIN, IF EXPOSED, REPLACE IN "LIKE-KIND" WHERE DAMAGED OR DETERIORATED PER UNIT PRICES.
138. MFR'S APPROVED FABRIC REINFORCED LIQUID APPLIED FLASHING SYSTEM TO SEAL METAL-TO-MEMBRANE JOINT.
143. 26 GA. ST. STL. CONICAL SEALANT COVER - FRICTION FIT IN FIELD & SECURE.
170. APPROVED MFR'S TROUBLEABLE MODIFIED BITUMEN MASTIC &/OR ADHESIVE.
- A. SIDE MOUNTED BASE FOR LIGHTNING PROTECTION AIR TERMINAL OR CABLE, SECURE TO VERTICAL FACE OF FLASHING WITH EPOXY ADHESIVE.
- B. EXISTING GYPSUM COVERBOARD TO REMAIN - REPLACE IN "LIKE-KIND" WHERE DAMAGED OR DETERIORATED PER UNIT PRICE ALLOWANCES.
- C. NEW TAPERED RIGID INSULATION CRICKET AT 3/8" PER FOOT MIN. SLOPE
- D. LEAD FREE SELF-ADHERED SHEET FLASHING "WAKAFLEX".
- E. TWO-LAYERS OF SELF-ADHERED MODIFIED BITUMEN UNDERLAYMENT.
- F. MFR'S STD. NON-CORROSIVE CONTINUOUS METAL EAVE CLOSURE PIECE.
- G. EXISTING PRE-FINISHED METAL WALL PANEL TO REMAIN UNCHANGED.
- H. NEW ST. STL. COUNTERFLASHING - INSERT AB AND BEHIND EXISTING COPING CAP AND SECURE - SIMILAR TO DETAIL A06.5, FIELD VERIFY DIMENSIONS.
- J. 1/4" DIA. ST. STL. SCREW WITH NEOPRENE BACKED METAL SEALING WASHERS @ 8" ON CENTER - SEE FASTENER SCHEDULE, DUG. G02.
- K. 24 GA. CONT. ST. STL. ANGLE FLASHING PER TILE MFR'S RECOMMENDATIONS.
- L. #2 x 2' LONG ST. STL. SCREW WITH NEOPRENE SEALING WASHER @ 12" O.C. MAX. (TWO MIN. PER EACH SIDE OF CURB).
- M. ST. STL. FLASHING SLEEVE WITH INTEGRAL DECK FLANGE AND COLLAR WITH CONICAL SEALANT COVER - INSTALL EITHER 1 OR 2-PC. 24 GA. SOLDERED SLEEVE - USE S.I. INDUSTRIES MODEL FL/D 4 FL/8 (ROUND), SQT/D 4 SQT/8 (SQUARE) OR APPROVED EQUAL.
- N. WRAP ROOF DRAIN BOWL AND LEADER PIPE WITH INSULATION FOR FIRST 10 FEET (MINIMUM) OF PIPE RUN - SEE SPECIFICATIONS.
- O. 1/4" DIA. x 2' LG. "RAUL" ZAPAC NAIL-IN WITH ST. STL. DRIVE PIN @ 4" O.C.

A/R/C  
Associates  
Incorporated

Architecture  
Roof Consulting  
Construction Technology  
LIC. NBR AR-0007684  
01 North Fern Creek Avenue  
Suite 100 Orlando, FL  
32803-4899  
Tel. (407) 896-7875  
Fax. (407) 898-6043  
COPYRIGHT © 2024 A/R/C ASSOCIATES, INC.



James W. Buckley

DOCUMENT HISTORY

[illegible]

**SEABREEZE HIGH SCHOOL  
REPLACE TLE ROOF AND COAT  
FLAT ROOF BLDG. 14  
VCS Project NO. 2448040**

2700 NOLEANDER AVE, DAYTONA BEACH, FL 32118

Architect  
JAMES W. RIPLEY

DESIGNED BY WR	DRAWN BY TJG
-------------------	-----------------

SUE DATE	AE PROJECT NUMBER
11/26/24	23040.00

SHEET TITLE

TYPICAL BASE AND RAKE  
EDGE FLASHING DETAILS AND  
FABRICATIONS

DRAWING NO.

A06





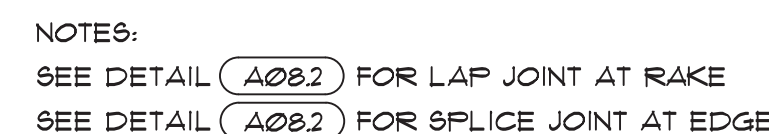
2. EXISTING WALL CONSTRUCTION TO REMAIN UNCHANGED.
3. EXISTING STRUCTURAL DECK TO REMAIN, SEE SCHEDULE FOR DECK TYPE.
4. EXISTING PARAPET WALL CONSTRUCTION TO REMAIN UNCHANGED.
6. EXISTING ROOF MEMBRANE SYSTEM TO REMAIN UNCHANGED, REPAIR AS DEFINED UNDER THE UNIT PRICE ALLOWANCES.
8. EXISTING NON-TAPERED RIGID INSULATION BOARD TO REMAIN UNCHANGED, REPLACE ANY WET INSULATION (SEE INFRARED REPORT) AS DEFINED UNDER THE UNIT PRICE ALLOWANCES.
9. EXISTING MECHANICAL EQUIPMENT - REMOVE AND REINSTALL AS REQUIRED.
10. EXISTING CURB CONSTRUCTION TO REMAIN AND BE REUSED AS DETAILED.
20. NEW 1/4" THICK GYPSUM ROOF COVERBOARD PER SPECIFICATIONS.
21. CONTINUOUS SURFACE APPLIED ALUM. TERMINATION BAR -SEE DETAIL A13.6.
22. CONT. SURFACE MOUNTED COUNTERFLASHING - SEE DETAILS A05.2/A06.5
23. SEALANT PER SPECIFICATIONS - CONTINUOUS TOOLED BEAD (W.O.).
24. CONTINUOUS DOUBLE-SIDED BUTYL FLASHING TAPE PER SPECIFICATIONS.
25. CONTINUOUS RECEIVER MOUNTED COUNTERFLASHING -SEE DETAIL A07.4.
- 22 GA. ST. STL. OR 0.050" ALUM. CONTINUOUS CLEAT -SEE DETAIL AS NOTED.
24. NEW KYNAR PREFINISHED 0.050" ALUM. GUTTER - SEE DETAIL A11.6
38. EXISTING SCOFFER FABRICATION TO REMAIN, MODIFIED AS DETAILED.
39. NEW ALUMINUM 2" x 1/8" GUTTER BRACKETS AT 2'-6" O.C. -PRIME AND PAINT TO MATCH GUTTER FINISH.
40. EXISTING VENT STACK (VTR) -INSTALL EXTENSION AS / IF REQUIRED.
41. NEW 2 x P.T. WOOD BLOCKING -ANCHOR PER FASTENING SCHEDULE (G02).
42. NEW 5/8" CDX PLYWOOD -ANCHOR PER FASTENING SCHEDULE (DWG. G02).
44. NEW CAST IRON ROOF DRAIN -ADJUST ELEVATION ABOVE DECK IN FIELD.
47. CONTINUOUS FOAM BACKER ROD FOR SEALANT -FIELD VERIFY SIZE NEEDED
48. REMOVE EXISTING RIGID INSULATION AS REQUIRED TO CREATE A 4 FOOT SQUARE, 3/4" PER FOOT SLOPED SURF AT DRAIN FROM TAPERED RIGID INSULATION WITH GYP. COVER BOARD -SEE DETAIL A12.
51. SELF-ADHESIVE MODIFIED BITUMEN UNDERLAYMENT MEMBRANE SYSTEM, TWO LAYER PHASED APPLICATION PER SPECS.
54. SMOOTH SBS MODIFIED BITUMEN STRIP-IN FLASHING MEMBRANE.
56. GRANULE SURFACED SBS MODIFIED BITUMEN MEMBRANE CAP FLASHING.
57. CONTINUOUS NON-COMBUSTIBLE METAL OR FIBER CANT PER SPECS.
58. SMOOTH SURFACED SBS MOD. BIT. MEMBRANE FLASHING INTERPLY SHEET.
59. KYNAR PRE-FIN. 0.040" ALUM. VALLEY METAL -SEE DETAIL A05.3.
61. KYNAR PREFINISHED 0.040" ALUM. DRIP EDGE FLASHING -SEE DETAIL A08.1
62. 4" PREFORMED LEAD FLASHING "BOOT" -ROLL OVER AND DOWN INTO PIPE WITHOUT TEARING AS SHOWN, PRIME AS REQUIRED.
63. 36" SQUARE, 4" LEAD FLASHING SHEET AT ROOF DRAIN, PRIME AS REQ'D.
65. GRANULE SURFACED SBS MODIFIED BITUMEN CAP SHEET AT FIELD OF ROOF.
70. SMOOTH SURFACED SBS MOD. BIT. INTERPLY MEMBRANE PER SPECS.
106. PROVIDE 3' (MIN.) LAP JOINT WITH DOUBLE ROWS OF CONT. SEALANT.
111. NEW 3" WIDE RETAINER CLEAT @ 18" O.C. MAX. WITH 2 FASTENERS MIN. - BEND UP IN FIELD TO SECURE COUNTER FLASHING.
120. WOOD CURBS FROM 2 x 4 STUDS / FRAMING @ 16" O.C. -FIELD VERIFY HEIGHT.
121. 24 GA. GALV. STL. CONT. BLOCKING FOR TILE ANCHORAGE AT HIP, RIDGE & RAKE EDGE - SEAL TO UNDERLAYMENT AND ANCHOR WITH #2 x 2" ST. STL. SCREWS AT 12" O.C. ON EACH SIDE.
122. CONCRETE ROOF TILE -INSTALL PER MANUFACTURER'S INSTRUCTIONS
123. BUILDING CODE AND TILE MANUFACTURER APPROVED FOAM TILE ADHESIVE -APPLY PER MANUFACTURER'S DIRECTIONS AND PRODUCT APPROVALS.
124. NATURAL COLOR MORTAR -APPLY PER MANUFACTURER'S DIRECTIONS.
133. EXIST. P.T. WOOD BLOCKING OR TRIM TO REMAIN, IF EXPOSED, REPLACE II "LIKE-KIND" WHERE DAMAGED OR DETERIORATED PER UNIT PRICES.
138. MFR'S APPROVED FABRIC REINFORCED LIQUID APPLIED FLASHING SYSTEM TO SEAL METAL TO-MEMBRANE JOINT.
149. 26 GA. ST. STL. CONICAL SEALANT COVER -FRICTION FIT IN FIELD & SECURE.
170. APPROVED MFR'S TROUBLEABLE MODIFIED BITUMEN MASTIC 4/OR ADHESIVE.
- A. SIDE MOUNTED BASE FOR LIGHTNING PROTECTION AIR TERMINAL OR CABLE, SECURE TO VERTICAL FACE OF FLASHING WITH EPOXY ADHESIVE.
- B. EXISTING GYPSUM COVERBOARD TO REMAIN -REPLACE II "LIKE-KIND" WHERE DAMAGED OR DETERIORATED PER UNIT PRICE ALLOWANCES.
- C. NEW TAPERED RIGID INSULATION CRICKET AT 3/8" PER FOOT MIN. SLOPE
- D. LEAD FREE SELF-ADHERED SHEET FLASHING 'WAKAFLEX'.
- E. TWO-LAYERS OF SELF-ADHERED MODIFIED BITUMEN UNDERLAYMENT.
- F. MFR'S STD. NON-CORROSIVE CONTINUOUS METAL EAVE CLOSURE PIECE.
- G. EXISTING PRE-FINISHED METAL WALL PANEL TO REMAIN UNCHANGED.
- H. NEW ST. STL. COUNTERFLASHING -INSERT UP AND BEHIND EXISTING COPING CAP AND SECURE -SIMILAR TO DETAIL A06.5, FIELD VERIFY DIMENSIONS.
- J. 1/4" DIA. ST. STL. SCREW WITH NEOPRENE BACKED METAL SEALING WASHERS @ 8" ON CENTER -SEE FASTENER SCHEDULE, DWG. G02.
- K. 24 GA. CONT. ST. STL. ANGLE FLASHING PER TILE MFR'S RECOMMENDATIONS.
- L. #2x x 2" LONG ST. STL. SCREW WITH NEOPRENE SEALING WASHER @ 12" O.C. MAX. (TWO MIN PER EACH SIDE OF CURB).
- M. ST. STL. FLASHING GREECH WITH INTEGRAL DECK FLANGE AND COLLAR WITH CONT. SEALANT COVER, -INSTALL EITHER 1 OR 2-PC. 24 GA. SOLDERED SLEEVE -USE SBC INDUSTRIES MODEL PL/D & PL/S (ROUND); SQT/D & SQT/S (SQUARE), OR APPROVED EQUIVALENT.
- N. WRAP ROOF DRAIN BOWL AND LEADER PIPE WITH INSULATION FOR FIRST 10 FEET (MINIMUM) OF PIPE RUN -SEE SPECIFICATIONS.
- O. 1/4" DIA. x 2" LG. 'RAULI' ZAMAC 'NAIL-IN' WITH ST. STL. DRIVE PIN @ 4" O.C.

NO.

2700 N OLEANDER AVE, DAYTONA BEACH, FL 32118

A07

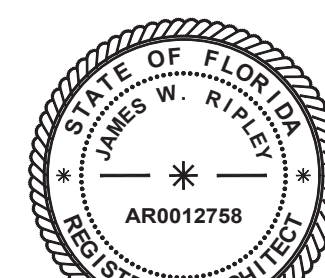
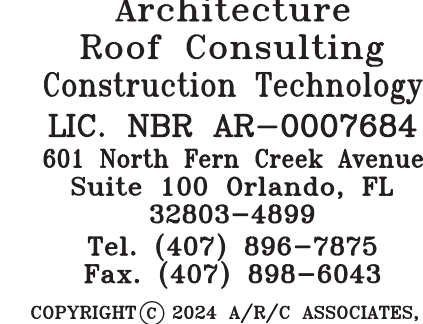




- NOTES:
1. EPOXY ADHERE ALL LAPS AND CORNER INSERTS TO FORM ONE CONTINUOUS FABRICATION.
  2. DIMENSIONS NOT GIVEN TO BE FIELD VERIFIED.
  3. GUTTER NOT SHOWN FOR CLARITY

- NOTES:
1. EPOXY/WELD (AS PER METAL TYPE)  
ALL LAPS & CORNER INSERTS TO  
FORM ONE CONTINUOUS PIECE
  2. DIMENSIONS NOT GIVEN TO BE FIELD VERIFIED
  3. CLAY TILE NOT SHOWN FOR CLARITY

2. EXISTING WALL CONSTRUCTION TO REMAIN UNCHANGED.
3. EXISTING STRUCTURAL DECK TO REMAIN, SEE SCHEDULE FOR DECK TYPE.
4. EXISTING PARAPET WALL CONSTRUCTION TO REMAIN UNCHANGED.
6. EXISTING ROOF MEMBRANE SYSTEM TO REMAIN UNCHANGED, REPAIR AS DEFINED UNDER THE UNIT PRICE ALLOWANCES.
8. EXISTING NON-TAPERED RIGID INSULATION BOARD TO REMAIN UNCHANGED, REPLACE ANY WET INSULATION (SEE INFRARED REPORT) AS DEFINED UNDER THE UNIT PRICE ALLOWANCES.
9. EXISTING MECHANICAL EQUIPMENT - REMOVE AND REINSTALL AS REQUIRED.
10. EXISTING CURB CONSTRUCTION TO REMAIN AND BE REUSED AS DETAILED.
20. NEW 1/4" THICK GYPSUM ROOF COVERBOARD PER SPECIFICATIONS.
21. CONTINUOUS SURFACE APPLIED ALUM. TERMINATION BAR -SEE DETAIL A13.6.
22. CONT. SURFACE MOUNTED COUNTERFLASHING - SEE DETAILS A05.2/A06.5
23. SEALANT PER SPECIFICATIONS - CONTINUOUS TOOLED BEAD (W.O.).
24. CONTINUOUS DOUBLE-SIDED BUTYL FLASHING TAPE PER SPECIFICATIONS.
25. CONTINUOUS RECEIVER MOUNTED COUNTERFLASHING -SEE DETAIL A07.4.
- 22 GA. ST. STL. OR 0.050" ALUM. CONTINUOUS CLEAT -SEE DETAIL AS NOTED.
24. NEW KYNAR PREFINISHED 0.050" ALUM. GUTTER - SEE DETAIL A11.6
38. EXISTING SCOFFER FABRICATION TO REMAIN, MODIFIED AS DETAILED.
39. NEW ALUMINUM 2" x 1/8" GUTTER BRACKETS AT 2'-6" O.C. -PRIME AND PAINT TO MATCH GUTTER FINISH.
40. EXISTING VENT STACK (VTR) -INSTALL EXTENSION AS / IF REQUIRED.
41. NEW 2 x P.T. WOOD BLOCKING -ANCHOR PER FASTENING SCHEDULE (G02).
42. NEW 5/8" CDX PLYWOOD -ANCHOR PER FASTENING SCHEDULE (DWG. G02).
44. NEW CAST IRON ROOF DRAIN -ADJUST ELEVATION ABOVE DECK IN FIELD.
47. CONTINUOUS FOAM BACKER ROD FOR SEALANT -FIELD VERIFY SIZE NEEDED
48. REMOVE EXISTING RIGID INSULATION AS REQUIRED TO CREATE A 4 FOOT SQUARE, 3/4" PER FOOT SLOPED SURF AT DRAIN FROM TAPERED RIGID INSULATION WITH GYP. COVER BOARD -SEE DETAIL A12.
51. SELF-ADHESIVE MODIFIED BITUMEN UNDERLAYMENT MEMBRANE SYSTEM, TWO LAYER PHASED APPLICATION PER SPECS.
54. SMOOTH SBS MODIFIED BITUMEN STRIP-IN FLASHING MEMBRANE.
56. GRANULE SURFACED SBS MODIFIED BITUMEN MEMBRANE CAP FLASHING.
57. CONTINUOUS NON-COMBUSTIBLE METAL OR FIBER CANT PER SPECS.
58. SMOOTH SURFACED SBS MOD. BIT. MEMBRANE FLASHING INTERPLY SHEET.
59. KYNAR PRE-FIN. 0.040" ALUM. VALLEY METAL -SEE DETAIL A05.3.
61. KYNAR PREFINISHED 0.040" ALUM. DRIP EDGE FLASHING -SEE DETAIL A08.1
62. 4" PREFORMED LEAD FLASHING "BOOT" -ROLL OVER AND DOWN INTO PIPE WITHOUT TEARING AS SHOWN, PRIME AS REQUIRED.
63. 36" SQUARE, 4" LEAD FLASHING SHEET AT ROOF DRAIN, PRIME AS REQ'D.
65. GRANULE SURFACED SBS MODIFIED BITUMEN CAP SHEET AT FIELD OF ROOF.
70. SMOOTH SURFACED SBS MOD. BIT. INTERPLY MEMBRANE PER SPECS.
106. PROVIDE 3' (MIN.) LAP JOINT WITH DOUBLE ROWS OF CONT. SEALANT.
111. NEW 3" WIDE RETAINER CLEAT @ 18" O.C. MAX. WITH 2 FASTENERS MIN. - BEND UP IN FIELD TO SECURE COUNTER FLASHING.
120. WOOD CURBS FROM 2 x 4 STUDS / FRAMING @ 16" O.C. -FIELD VERIFY HEIGHT.
121. 24 GA. GALV. STL. CONT. BLOCKING FOR TILE ANCHORAGE AT HIP, RIDGE & RAKE EDGE - SEAL TO UNDERLAYMENT AND ANCHOR WITH #2 x 2" ST. STL. SCREWS AT 12" O.C. ON EACH SIDE.
122. CONCRETE ROOF TILE -INSTALL PER MANUFACTURER'S INSTRUCTIONS
123. BUILDING CODE AND TILE MANUFACTURER APPROVED FOAM TILE ADHESIVE -APPLY PER MANUFACTURER'S DIRECTIONS AND PRODUCT APPROVALS.
124. NATURAL COLOR MORTAR -APPLY PER MANUFACTURER'S DIRECTIONS.
133. EXIST. P.T. WOOD BLOCKING OR TRIM TO REMAIN, IF EXPOSED, REPLACE IN "LIKE-KIND" WHERE DAMAGED OR DETERIORATED PER UNIT PRICES.
138. MFR'S APPROVED FABRIC REINFORCED LIQUID APPLIED FLASHING SYSTEM TO SEAL METAL TO-MEMBRANE JOINT.
149. 26 GA. ST. STL. CONICAL SEALANT COVER -FRICTION FIT IN FIELD & SECURE.
170. APPROVED MFR'S TROUBLEABLE MODIFIED BITUMEN MASTIC 4/OR ADHESIVE.
- A. SIDE MOUNTED BASE FOR LIGHTNING PROTECTION AIR TERMINAL OR CABLE, SECURE TO VERTICAL FACE OF FLASHING WITH EPOXY ADHESIVE.
- B. EXISTING GYPSUM COVERBOARD TO REMAIN -REPLACE IN "LIKE-KIND" WHERE DAMAGED OR DETERIORATED PER UNIT PRICE ALLOWANCES.
- C. NEW TAPERED RIGID INSULATION CRICKET AT 3/8" PER FOOT MIN. SLOPE
- D. LEAD FREE SELF-ADHERED SHEET FLASHING 'WAKAFLEX'.
- E. TWO-LAYERS OF SELF-ADHERED MODIFIED BITUMEN UNDERLAYMENT.
- F. MFR'S STD. NON-CORROSIVE CONTINUOUS METAL EAVE CLOSURE PIECE.
- G. EXISTING PRE-FINISHED METAL WALL PANEL TO REMAIN UNCHANGED.
- H. NEW ST. STL. COUNTERFLASHING -INSERT UP AND BEHIND EXISTING COPING CAP AND SECURE -SIMILAR TO DETAIL A06.5, FIELD VERIFY DIMENSIONS.
- J. 1/4" DIA. ST. STL. SCREW WITH NEOPRENE BACKED METAL SEALING WASHERS @ 8" ON CENTER -SEE FASTENER SCHEDULE, DWG. G02.
- K. 24 GA. CONT. ST. STL. ANGLE FLASHING PER TILE MFR'S RECOMMENDATIONS.
- L. #2x x 2" LONG ST. STL. SCREW WITH NEOPRENE SEALING WASHER @ 12" O.C. MAX. (TWO MIN PER EACH SIDE OF CURB).
- M. ST. STL. FLASHING GREECH WITH INTEGRAL DECK FLANGE AND COLLAR WITH CONICAL SEALANT COVER, -INSTALL EITHER 1 OR 2-PC. 24 GA SOLDERED SLEEVE - USE SBC INDUSTRIES MODEL PL/D & PL/S (ROUND); SQT/D & SQT/S (SQUARE), OR APPROVED EQUIVALENT
- N. WRAP ROOF DRAIN BOWL AND LEADER PIPE WITH INSULATION FOR FIRST 10 FEET (MINIMUM) OF PIPE RUN -SEE SPECIFICATIONS.
- O. 1/4" DIA. x 2" LG. 'RAULI' ZAMAC 'NAIL-IN' WITH ST. STL. DRIVE PIN @ 4" O.C.



*James W. Buckley*

[illegible]

**SEABREEZE HIGH SCHOOL  
REPLACE TLE ROOF AND COAT  
FLAT ROOF BLDG. 14**  
VCS Project NO. 2448040

2700 N OLEANDER AVE, DAYTONA BEACH, FL 32118

ARCH/ENGR OF RECO

Architect  
JAMES W. RIPLEY

DESIGNED BY  
**JWR**

ISSUE DATE  
01/02/2014

DRAWN BY  
TJG

	AE PROJECT NUMBER
	0000000000000000

SHEET TITLE

DRIP EDGE METAL  
MISCELLANEOUS FABRICATION  
DETAILS

DRAWING NO.

A08





## REVISIONS

DESCRIPTION

VCS Project NO. 2448040  
2700 N OLEANDER AVE, DAYTONA BEACH FL 32118

A09

2. EXISTING WALL CONSTRUCTION TO REMAIN UNCHANGED.
3. EXISTING STRUCTURAL DECK TO REMAIN, SEE SCHEDULE FOR DECK TYPE.
4. EXISTING PARAPET WALL CONSTRUCTION TO REMAIN UNCHANGED.
6. EXISTING ROOF MEMBRANE SYSTEM TO REMAIN UNCHANGED, REPAIR AS DEFINED UNDER THE UNIT PRICE ALLOWANCES.
8. EXISTING NON-TAPERED RIGID INSULATION BOARD TO REMAIN UNCHANGED, REPLACE ANY UET INSULATION (SEE INFRARED REPORT) AS DEFINED UNDER THE UNIT PRICE ALLOWANCES.
9. EXISTING MECHANICAL EQUIPMENT - REMOVE AND REINSTALL AS REQUIRED.
10. EXISTING CURB CONSTRUCTION TO REMAIN AND BE REUSED AS DETAILED.
20. NEW 1/4" THICK GYPSUM ROOF COVERBOARD PER SPECIFICATIONS.
21. CONTINUOUS SURFACE APPLIED ALUM. TERMINATION BAR -SEE DETAIL A18.6.
22. CONT. SURFACE MOUNTED COUNTERFLASHING - SEE DETAILS A05.2/A06.5
23. SEALANT PER SPECIFICATIONS - CONTINUOUS TOOLED BEAD (UNO).
24. CONTINUOUS DOUBLE-SIDED BUTYL FLASHING TAPE PER SPECIFICATIONS.
25. CONTINUOUS RECEIVER MOUNTED COUNTERFLASHING -SEE DETAIL A07.4.
26. 22 GA. ST. 9TL. OR 0250" ALUM. CONTINUOUS CLEAT -SEE DETAIL A8 NOTED
27. NEW KYNAR PREFINISHED 0250" ALUM. GUTTER - SEE DETAIL A11.6
28. EXISTING SCUFFER FABRICATION TO REMAIN, MODIFIED AS DETAILED.
39. NEW ALUMINUM 2" x 1/8" GUTTER BRACKETS AT 2'-6" O.C. -PRIME AND PAINT TO MATCH GUTTER FINISH.
40. EXISTING VENT STACK (VTR) -INSTALL EXTENSION AS / IF REQUIRED.
41. NEW 2 x P.T. WOOD BLOCKING -ANCHOR PER FASTENING SCHEDULE (G02).
42. NEW 5/8" CDX PLYWOOD -ANCHOR PER FASTENING SCHEDULE (DUG. G02).
44. NEW CAST IRON ROOF DRAIN -ADJUST ELEVATION ABOVE DECK IN FIELD.
47. CONTINUOUS FOAM BACKER ROD FOR SEALANT -FIELD VERIFY SIZE NEEDED
48. REMOVE EXISTING RIGID INSULATION AS REQUIRED TO CREATE A 4 FOOT SQUARE, 3/4" PER FOOT SLOPED SUMP AT DRAIN FROM TAPERED RIGID INSULATION WITH GYP. COVER BOARD -SEE DETAIL A12.
51. SELF-ADHESIVE MODIFIED BITUMEN UNDERLAYMENT MEMBRANE SYSTEM, TWO LAYER PHASED APPLICATION PER SPECS.
54. SMOOTH SBS MODIFIED BITUMEN STRIP-IN FLASHING MEMBRANE.
56. GRANULE SURFACED SBS MODIFIED BITUMEN MEMBRANE CAP FLASHING.
57. CONTINUOUS NON-COMBUSTIBLE METAL OR FIBER CANT PER SPECS.
58. SMOOTH SURFACED SBS MOD. BIT. MEMBRANE FLASHING INTERPLY SHEET.
59. KYNAR PRE-FIN. 0240" ALUM. VALLEY METAL -SEE DETAIL A05.3.
61. KYNAR PREFINISHED 0240" ALUM. DRIP EDGE FLASHING -SEE DETAIL A08.
62. 4" PREFORMED LEAD FLASHING "BOOT" -ROLL OVER AND DOWN INTO PIPE WITHOUT TEARING AS SHOWN, PRIME AS REQUIRED.
63. 36" SQUARE, 4" LEAD FLASHING SHEET AT ROOF DRAIN, PRIME AS REQ'D.
65. GRANULE SURFACED SBS MODIFIED BITUMEN CAP SHEET AT FIELD OF ROOF.
78. SMOOTH SURFACED SBS MOD. BIT. INTERPLY MEMBRANE PER SPECS.
106. PROVIDE 3' (MIN) LAP JOINT WITH DOUBLE ROWS OF CONT. SEALANT.
111. NEW 3" WIDE RETAINER CLEAT @ 18" O.C. MAX. WITH 2 FASTENERS MIN. - BEND UP IN FIELD TO SECURE CURB FLASHING.
120. WOOD CURB FROM 2 x 4 STUDS / FRAMING @ 16" O.C. -FIELD VERIFY HEIGHT.
121. 24 GA. GALV. 9TL. CONT. BLOCKING FOR TILE ANCHORAGE AT HIP, RIDGE & RAKE EDGE - SEAL TO UNDERLAYMENT AND ANCHOR WITH #12 x 2" ST. 9TL. SCREWS AT 12" O.C. ON EACH SIDE.
122. CONCRETE ROOF TILE -INSTALL PER MANUFACTURER'S INSTRUCTIONS
123. BUILDING CODE AND TILE MANUFACTURER APPROVED FOAM TILE ADHESIVE -APPLY PER MANUFACTURER'S DIRECTIONS AND PRODUCT APPROVALS.
124. NATURAL COLOR MORTAR -APPLY PER MANUFACTURER'S DIRECTIONS.
133. EXIST. P.T. WOOD BLOCKING OR TRIM TO REMAIN, IF EXPOSED, REPLACE IN "LIKE-KIND" WHERE DAMAGED OR DETERIORATED PER UNIT PRICES.
138. MFR'S APPROVED FABRIC REINFORCED LIQUID APPLIED FLASHING SYSTEM TO SEAL METAL-TO-MEMBRANE JOINT.
149. 26 GA. ST. 9TL. CONICAL SEALANT COVER -FRICTION FIT IN FIELD & SECURE.
170. APPROVED MFR'S TROUBLEABLE MODIFIED BITUMEN MASTIC +/-OR ADHESIVE.
- A. SIDE MOUNTED BASE FOR LIGHTNING PROTECTION AIR TERMINAL OR CABLE SECURE TO VERTICAL FACE OF FLASHING WITH EPOXY ADHESIVE.
- B. EXISTING GYPSUM COVERBOARD TO REMAIN -REPLACE IN "LIKE-KIND" WHERE DAMAGED OR DETERIORATED PER UNIT PRICE ALLOWANCES.
- C. NEW TAPERED RIGID INSULATION CRICKET AT 3/8" PER FOOT MIN. SLOPE
- D. LEAD FREE SELF-ADHERED SHEET FLASHING "WAKAFLEX".
- E. TWO-LAYERS OF SELF-ADHERED MODIFIED BITUMEN UNDERLAYMENT.
- F. MFR'S STD. NON-CORROSIVE CONTINUOUS METAL EAVE CLOSURE PIECE.
- G. EXISTING PRE-FINISHED METAL WALL PANEL TO REMAIN UNCHANGED.
- H. NEW ST. 9TL. COUNTERFLASHING -INSERT UP AND BEHIND EXISTING COPING CAP AND SECURE SIMILAR TO DETAIL A06.5, FIELD VERIFY DIMENSIONS.
- J. 1/4" DIA. ST. 9TL. SCREW WITH NEOPRENE BACKED METAL SEALING WASHERS @ 8" ON CENTER -SEE FASTENER SCHEDULE, DUG. G02.
- K. 24 GA. CONT. ST. 9TL. ANGLE FLASHING PER TILE MFR'S. RECOMMENDATIONS.
- L. #20 x 2" LONG ST. 9TL. SCREW WITH NEOPRENE SEALING WASHER @ 12" O.C. MAX. (TWO MIN. PER EACH SIDE OF CURB).
- M. ST. 9TL. FLASHING SLEEVE WITH INTEGRAL DECK FLANGE AND COLLAR WITH CONICAL SEALANT COVER -INSTALL EITHER 1 OR 2-PC. 24 GA. SOLDERED SLEEVE - USE 0.015 THICKNESS MOD. FL/D 1 1/4" (ROUND), 907/D 1 907/9 (SQUARE), OR APPROVED EQUAL.
- N. WRAP ROOF DRAIN BOWL AND LEADER PIPE WITH INSULATION FOR FIRST 10 FEET (MINIMUM) OF PIPE RUN -SEE SPECIFICATIONS.
- O. 1/4" DIA. x 2" LG. "RAUL" ZAMAC NAIL-IN WITH ST. 9TL. DRIVE PIN @ 4" O.C.



1. EPOXY ADHERE ALL LAPS AND CORNER INSERTS TO FORM ONE CONTINUOUS FABRICATION.
2. DIMENSIONS NOT GIVEN TO BE FIELD VERIFIED.



1. EPOXY ADHERE ALL LAPS AND CORNER INSERTS TO FORM ONE CONTINUOUS FABRICATION.
2. DIMENSIONS NOT GIVEN TO BE FIELD VERIFIED.



- AP JOINT  
SEE DETAIL  
(082)

RAKE EDGE INSIDE CORNER TRANSITION  
FABRICATION DETAIL AT HEADWALL  
SCALE: NONE



LOW-SIDE TRANSITION FLASHING  
CORNER FABRICATION DETAIL AT TOWER

---

SCALE: NONE



1. SOLDER/WELD (AS PER METAL TYPE)  
ALL LAPS & CORNER INSERTS TO  
FORM ONE CONTINUOUS PIECE
2. DIMENSIONS NOT GIVEN TO BE FIELD VERIFIED



1. SOLDERWELD (AS PER METAL TYPE)  
ALL LAPS & CORNER INSERTS TO  
FORM ONE CONTINUOUS PIECE
2. DIMENSIONS NOT GIVEN TO BE FIELD VERIFIED

**TYPICAL INSIDE CORNER  
SKIRT METAL FABRICATION AT WALL**

**SCALE: NONE**

ROOF B/14 -INSIDE CORNER SKIRT  
METAL FABRICATION AT METAL PANEL

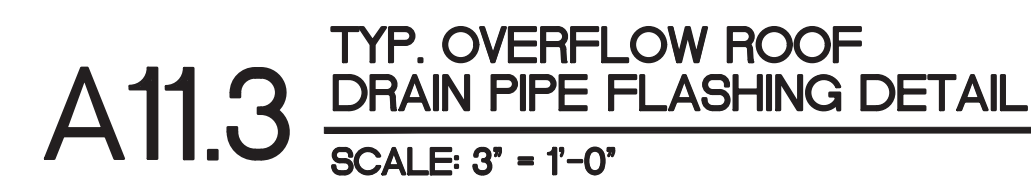
---

SCALE: NONE





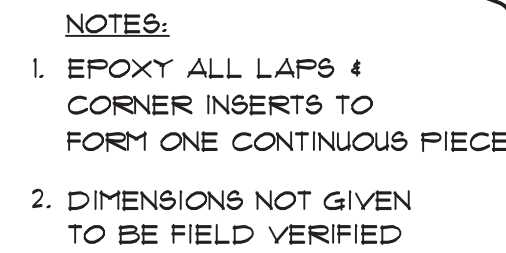




2. EXISTING WALL CONSTRUCTION TO REMAIN UNCHANGED.
3. EXISTING STRUCTURAL DECK TO REMAIN, SEE SCHEDULE FOR DECK TYPE.
4. EXISTING PARAPET WALL CONSTRUCTION TO REMAIN UNCHANGED.
6. EXISTING ROOF MEMBRANE SYSTEM TO REMAIN UNCHANGED, REPAIR AS DEFINED UNDER THE UNIT PRICE ALLOWANCES.
8. EXISTING NON-TAPERED RIGID INSULATION BOARD TO REMAIN UNCHANGED, REPLACE ANY WET INSULATION (SEE INFRARED REPORT) AS DEFINED UNDER THE UNIT PRICE ALLOWANCES.
9. EXISTING MECHANICAL EQUIPMENT - REMOVE AND REINSTALL AS REQUIRED.
10. EXISTING CURB CONSTRUCTION TO REMAIN AND BE REUSED AS DETAILED.
21. NEW 1/4" THICK GYPSUM ROOF COVERBOARD PER SPECIFICATIONS.
21. CONTINUOUS SURFACE APPLIED ALUM. TERMINATION BAR -SEE DETAIL A13.6.
22. CONT. SURFACE MOUNTED COUNTERFLASHING - SEE DETAILS A05.2/A06.5
23. SEALANT PER SPECIFICATIONS - CONTINUOUS TOOLED BEAD (UNO.)
24. CONTINUOUS DOUBLE-SIDED BUTYL FLASHING TAPE PER SPECIFICATIONS.
25. CONTINUOUS RECEIVER MOUNTED COUNTERFLASHING -SEE DETAIL A07.4.
32. 22 GA. ST. STL. OR 0250" ALUM. CONTINUOUS CLEAT -SEE DETAIL AS NOTED.
34. NEW KYNAR PREFINISHED 0250" ALUM. GUTTER - SEE DETAIL A11.6
38. EXISTING SCUPPER FABRICATION TO REMAIN, MODIFIED AS DETAILED.
39. NEW ALUMINUM 2" x 1/8" GUTTER BRACKETS AT 2'-6" O.C. -PRIME AND PAINT TO MATCH GUTTER FINISH.
40. EXISTING VENT STACK (VTR) -INSTALL EXTENSION AS / IF REQUIRED.
41. NEW 2 x P.T. WOOD BLOCKING -ANCHOR PER FASTENING SCHEDULE (G02).
42. NEW 5/8" CDX PLYWOOD -ANCHOR PER FASTENING SCHEDULE (DUG. G02).
44. NEW CAST IRON ROOF DRAIN -ADJUST ELEVATION ABOVE DECK IN FIELD.
49. CONTINUOUS FOAM BACKER ROD FOR SEALANT -FIELD VERIFY SIZE NEEDED
49. REMOVE EXISTING RIGID INSULATION AS REQUIRED TO CREATE A 4 FOOT SQUARE, 3/4" PER FOOT SLOPED SUMP AT DRAIN FROM TAPERED RIGID INSULATION WITH GTF. COVER BOARD -SEE DETAIL A12.
51. SELF-ADHESIVE MODIFIED BITUMEN UNDERLAYMENT MEMBRANE SYSTEM, TWO LAYER PHASED APPLICATION PER SPECS.
54. SMOOTH SBS MODIFIED BITUMEN STRIP-IN FLASHING MEMBRANE.
56. GRANULE SURFACED SBS MODIFIED BITUMEN MEMBRANE CAP FLASHING.
57. CONTINUOUS NON-COMBUSTIBLE METAL OR FIBER CANT FER SPECS.
58. SMOOTH SURFACED SBS MOD. BIT. MEMBRANE FLASHING INTERPLY SHEET.
61. KYNAR PRE-FIN. 0240" ALUM. VALLEY METAL -SEE DETAIL A05.3.
61. KYNAR PREFINISHED 0240" ALUM. DRIP EDGE FLASHING -SEE DETAIL A02.1
62. 4" PREFORMED LEAD FLASHING "BOOT" -ROLL OVER AND DOWN INTO PIPE WITHOUT TEARING AS SHOWN, PRIME AS REQUIRED.
63. 36" SQUARE, 4" LEAD FLASHING SHEET AT ROOF DRAIN, PRIME AS REQ'D.
64. GRANULE SURFACED SBS MODIFIED BITUMEN CAP SHEET AT FIELD OF ROOF.
71. SMOOTH SURFACED SBS MOD. BIT. INTERPLY MEMBRANE PER SPECS.
106. PROVIDE 3" (MIN.) LAP JOINT WITH DOUBLE ROWS OF CONT. SEALANT.
111. NEW 3" WIDE RETAINER CLEAT @ 18" O.C. MAX. WITH 2 FASTENERS MIN. - BEND UP IN FIELD TO SECURE CURB FLASHING.
120. WOOD CURB FROM 2 x 4 STUDS / FRAMING @ 16" O.C. -FIELD VERIFY HEIGHT.
- 24 GA. GALV. STL. CONT. BLOCKING FOR TILE ANCHORAGE AT HIP, RIDGE & RAKE EDGE - SEAL TO UNDERLAYMENT AND ANCHOR WITH #2 x 2" ST. STL. SCREWS AT 12" O.C. ON EACH SIDE.
122. CONCRETE ROOF TILE -INSTALL PER MANUFACTURER'S INSTRUCTIONS
123. BUILDING CODE AND TILE MANUFACTURER APPROVED FOAM TILE ADHESIVE -APPLY PER MANUFACTURER'S DIRECTIONS AND PRODUCT APPROVALS.
124. NATURAL COLOR MORTAR -APPLY PER MANUFACTURER'S DIRECTIONS.
133. EXIST. P.T. WOOD BLOCKING OR TRIM TO REMAIN, IF EXPOSED, REPLACE IN "LIKE-KIND" WHERE DAMAGED OR DETERIORATED PER UNIT PRICES.
138. MFR'S APPROVED FABRIC REINFORCED LIQUID APPLIED FLASHING SYSTEM TO SEAL METAL-TO-MEMBRANE JOINT.
143. 26 GA. ST. STL. CONICAL SEALANT COVER -FRICTION FIT IN FIELD & SECURE.
170. APPROVED MFR'S TROUBLEABLE MODIFIED BITUMEN MASTIC 4/0R ADHESIVE.
- A. SIDE MOUNTED BASE FOR LIGHTNING PROTECTION AIR TERMINAL OR CABLE, SECURE TO VERTICAL FACE OF FLASHING WITH EPOXY ADHESIVE.
- B. EXISTING GYPSUM COVERBOARD TO REMAIN -REPLACE IN "LIKE-KIND" WHERE DAMAGED OR DETERIORATED PER UNIT PRICE ALLOWANCES.
- C. NEW TAPERED RIGID INSULATION CRICKET AT 3/8" PER FOOT MIN. SLOPE
- D. LEAD FREE SELF-ADHERED SHEET FLASHING 'WAKAFLEX'.
- E. TWO-LAYERS OF SELF-ADHERED MODIFIED BITUMEN UNDERLAYMENT.
- F. MFR'S STD. NON-CORROSIVE CONTINUOUS METAL EAVE CLOSURE PIECE.
- G. EXISTING PRE-FINISHED METAL WALL PANEL TO REMAIN UNCHANGED.
- H. NEW ST. STL. COUNTERFLASHING -INSERT UP AND BEHIND EXISTING COPING CAP AND SECURE -SIMILAR TO DETAIL A06.5, FIELD VERIFY DIMENSIONS.
- J. 1/4" DIA. ST. STL. SCREW WITH NEOPRENE BACKED METAL SEALING WASHERS @ 8" ON CENTER -SEE FASTENER SCHEDULE, DUG. G02.
- K. 24 GA. CONT. ST. STL. ANGLE FLASHING PER TILE MFR'S RECOMMENDATIONS.
- L. #12 x 2' LONG ST. STL. SCREW WITH NEOPRENE SEALING WASHER @ 12" O.C. MAX. (TWO MIN. FER EACH SIDE OF CURB).
- M. ST. STL. FLASHING SLEEVE WITH INTEGRAL DECK FLANGE AND COLLAR WITH CONICAL SEALANT COVER -INSTALL EITHER 1 OR 2-PC. 24 GA. SOLDERED SLEEVE - USE S.B.C. INDUSTRIES MODEL FL/D 4 FL/8 (ROUND), SQT/D 4 SQT/8 (SQUARE) OR APPROVED EQUAL.
- N. WRAP ROOF DRAIN BOWL AND LEADER PIPE WITH INSULATION FOR FIRST 10 FEET (MINIMUM) OF PIPE RUN -SEE SPECIFICATIONS.
- O. 1/4" DIA. x 2' LG. 'RAUL' ZAPAC NAIL-IN WITH ST. STL. DRIVE PIN @ 4" O.C.







2. EXISTING WALL CONSTRUCTION TO REMAIN UNCHANGED.
3. EXISTING STRUCTURAL DECK TO REMAIN, SEE SCHEDULE FOR DECK TYPE.
4. EXISTING PARAPET WALL CONSTRUCTION TO REMAIN UNCHANGED.
6. EXISTING ROOF MEMBRANE SYSTEM TO REMAIN UNCHANGED, REPAIR AS DEFINED UNDER THE UNIT PRICE ALLOWANCES.
8. EXISTING NON-TAPERED RIGID INSULATION BOARD TO REMAIN UNCHANGED, REPLACE ANY WET INSULATION (SEE INFRARED REPORT) AS DEFINED UNDER THE UNIT PRICE ALLOWANCES.
9. EXISTING MECHANICAL EQUIPMENT - REMOVE AND REINSTALL AS REQUIRED.
10. EXISTING CURB CONSTRUCTION TO REMAIN AND BE REUSED AS DETAILED.
20. NEW 1/4" THICK GYPSUM ROOF COVERBOARD PER SPECIFICATIONS.
21. CONTINUOUS SURFACE APPLIED ALUM. TERMINATION BAR -SEE DETAIL A13.6.
22. CONT. SURFACE MOUNTED COUNTERFLASHING - SEE DETAILS A05.2/A06.5
23. SEALANT PER SPECIFICATIONS - CONTINUOUS TOOLED BEAD (UNO.)
24. CONTINUOUS DOUBLE-SIDED BUTYL FLASHING TAPE PER SPECIFICATIONS.
25. CONTINUOUS RECEIVER MOUNTED COUNTERFLASHING -SEE DETAIL A07.4.
27. 22 GA. ST. STL. OR 0050" ALUM. CONTINUOUS CLEAT -SEE DETAIL AS NOTED.
34. NEW KYNAR PREFINISHED 0050" ALUM. GUTTER - SEE DETAIL A11.6
38. EXISTING SQUIRREL FABRICATION TO REMAIN, MODIFIED AS DETAILED.
39. NEW ALUMINUM 2" x 1/8" GUTTER BRACKETS AT 2'-6" O.C. -PRIME AND PAINT TO MATCH GUTTER FINISH.
40. EXISTING VENT STACK (VTR) -INSTALL EXTENSION AS / IF REQUIRED.
41. NEW 2 x P.T. WOOD BLOCKING -ANCHOR PER FASTENING SCHEDULE (G02).
42. NEW 5/8" CDX PLYWOOD -ANCHOR PER FASTENING SCHEDULE (DWG. G02).
44. NEW CAST IRON ROOF DRAIN -ADJUST ELEVATION ABOVE DECK IN FIELD.
47. CONTINUOUS FOAM BACKER ROD FOR SEALANT -FIELD VERIFY SIZE NEEDED
48. REMOVE EXISTING RIGID INSULATION AS REQUIRED TO CREATE A 4 FOOT SQUARE, 3/4" PER FOOT SLOPED SUMP AT DRAIN FROM TAPERED RIGID INSULATION WITH GYP. COVER BOARD -SEE DETAIL A12.
51. SELF-ADHESIVE MODIFIED BITUMEN UNDERLAYMENT MEMBRANE SYSTEM, TWO LAYER PHASED APPLICATION PER SPECS.
54. SMOOTH SBS MODIFIED BITUMEN STRIP-IN FLASHING MEMBRANE.
56. GRANULE SURFACED SBS MODIFIED BITUMEN MEMBRANE CAP FLASHING.
57. CONTINUOUS NON-COMBUSTIBLE METAL OR FIBER CANT PER SPECS.
58. SMOOTH SURFACED SBS MOD. BIT. MEMBRANE FLASHING INTERPLY SHEET.
59. KYNAR PRE-FIN. 0040" ALUM. VALLEY METAL -SEE DETAIL A05.3.
61. KYNAR PREFINISHED 0040" ALUM. DRIP EDGE FLASHING -SEE DETAIL A08.1
62. 4" PREFORMED LEAD FLASHING "BOOT" -ROLL OVER AND DOWN INTO PIPE WITHOUT TEARING AS SHOWN, PRIME AS REQUIRED.
73. 36' SQUARE, 4" LEAD FLASHING SHEET AT ROOF DRAIN, PRIME AS REQ'D.
75. GRANULE SURFACED SBS MODIFIED BITUMEN CAP SHEET AT FIELD OF ROOF.
78. SMOOTH SURFACED SBS MOD. BIT. INTERPLY MEMBRANE PER SPECS.
106. PROVIDE 3" (MIN.) LAP JOINT WITH DOUBLE ROWS OF CONT. SEALANT.
111. NEW 3" WIDE RETAINER CLEAT @ 18" O.C. MAX. WITH 2 FASTENERS MIN. - BEND UP IN FIELD TO SECURE COUNTER FLASHING.
120. WOOD CURB FROM 2 x 4 STUDS / FRAMING @ 16" O.C. -FIELD VERIFY HEIGHT.
121. 24 GA. GALV. STL. CONT. BLOCKING FOR TILE ANCHORAGE AT HIP, RIDGE & RAKE EDGE - SEAL TO UNDERLAYMENT AND ANCHOR WITH #2 x 2" ST. STL. SCREWS AT 12" O.C. ON EACH SIDE.
122. CONCRETE ROOF TILE -INSTALL PER MANUFACTURER'S INSTRUCTIONS
123. BUILDING CODE AND TILE MANUFACTURER APPROVED FOAM TILE ADHESIVE -APPLY PER MANUFACTURER'S DIRECTIONS AND PRODUCT APPROVALS.
124. NATURAL COLOR MORTAR -APPLY PER MANUFACTURER'S DIRECTIONS.
133. EXIST. PT. WOOD BLOCKING OR TRIM TO REMAIN, IF EXPOSED, REPLACE IN "LIKE-KIND" WHERE DAMAGED OR DETERIORATED PER UNIT PRICES.
138. MFR'S APPROVED FABRIC REINFORCED LIQUID APPLIED FLASHING SYSTEM TO SEAL METAL-TO-MEMBRANE JOINT.
149. 26 GA. ST. STL. CONICAL SEALANT COVER -FRICTION FIT IN FIELD & SECURE.
170. APPROVED MFR'S TROUBLEABLE MODIFIED BITUMEN MASTIC 4/OR ADHESIVE.
- A. SIDE MOUNTED BASE FOR LIGHTNING PROTECTION AIR TERMINAL OR CABLE, SECURE TO VERTICAL FACE OF FLASHING WITH EPOXY ADHESIVE.
- B. EXISTING GYPSUM COVERBOARD TO REMAIN -REPLACE IN "LIKE-KIND" WHERE DAMAGED OR DETERIORATED PER UNIT PRICE ALLOWANCES.
- C. NEW TAPERED RIGID INSULATION CRICKET AT 3/8" PER FOOT MIN. SLOPE
- D. LEAD FREE SELF-ADHERED SHEET FLASHING "WAKAFLEX".
- E. TWO-LAYERS OF SELF-ADHERED MODIFIED BITUMEN UNDERLAYMENT.
- F. MFR'S STD. NON-CORROSIVE CONTINUOUS METAL EAVE CLOSURE PIECE.
- G. EXISTING PRE-FINISHED METAL WALL PANEL TO REMAIN UNCHANGED.
- H. NEW ST. STL. COUNTERFLASHING -INSERT UP AND BEHIND EXISTING COPING CAP AND SECURE -SIMILAR TO DETAIL A06.5, FIELD VERIFY DIMENSIONS.
- J. 1/4" DIA. ST. STL. SCREW WITH NEOPRENE BACKED METAL SEALING WASHERS @ 8" ON CENTER -SEE FASTENER SCHEDULE, DWG. G02.
- K. 24 GA. CONT. ST. STL. ANGLE FLASHING PER TILE MFR'S RECOMMENDATIONS.
- L. #12 x 2" LONG ST. STL. SCREW WITH NEOPRENE SEALING WASHER @ 12" O.C. MAX. (TWO MIN PER EACH SIDE OF CURB).
- M. ST. STL. FLASHING SLEEVE WITH INTEGRAL DECK FLANGE AND COLLAR WITH CONICAL SEALANT COVER -INSTALL EITHER 1 OR 2-PC. 24 GA SOLDERED SLEEVE - USE AISC INDUSTRIES MODEL FL/D 4 FL/S (INSULATION), SQT/D 4 SQT/S (SQUARE), OR APPROVED EQUAL.
- N. WRAP ROOF DRAIN BOWL AND LEADER PIPE WITH INSULATION FOR FIRST 10 FEET (MINIMUM) OF PIPE RUN -SEE SPECIFICATIONS.
- O. 1/4" DIA. x 2" LG. "RAUL" ZANAC NAIL-IN WITH ST. STL. DRIVE PIN @ 4" O.C.

A12





**A13.2** TYP. CONCRETE SPLASH BLOCK DETAIL  
SCALE: NONE



2. EXISTING WALL CONSTRUCTION TO REMAIN UNCHANGED.
3. EXISTING STRUCTURAL DECK TO REMAIN, SEE SCHEDULE FOR DECK TYPE.
4. EXISTING PARAPET WALL CONSTRUCTION TO REMAIN UNCHANGED.
6. EXISTING ROOF MEMBRANE SYSTEM TO REMAIN UNCHANGED, REPAIR AS DEFINED UNDER THE UNIT PRICE ALLOWANCES.
8. EXISTING NON-TAPERED RIGID INSULATION BOARD TO REMAIN UNCHANGED, REPLACE ANY WET INSULATION (SEE INFRARED REPORT) AS DEFINED UNDER THE UNIT PRICE ALLOWANCES.
9. EXISTING MECHANICAL EQUIPMENT - REMOVE AND REINSTALL AS REQUIRED.
10. EXISTING CURB CONSTRUCTION TO REMAIN AND BE REUSED AS DETAILED.
20. NEW 1/4" THICK GYPSUM ROOF COVERBOARD PER SPECIFICATIONS.
21. CONTINUOUS SURFACE APPLIED ALUM. TERMINATION BAR -SEE DETAIL A13.6.
22. CONT. SURFACE MOUNTED COUNTERFLASHING - SEE DETAILS A05.2/A06.5
23. SEALANT PER SPECIFICATIONS - CONTINUOUS TOOLED BEAD (W.O.).
24. CONTINUOUS DOUBLE-SIDED BUTYL FLASHING TAPE PER SPECIFICATIONS.
25. CONTINUOUS RECEIVER MOUNTED COUNTERFLASHING -SEE DETAIL A07.4.
- 22 GA. ST. STL. OR 0.050" ALUM. CONTINUOUS CLEAT -SEE DETAIL AS NOTED.
24. NEW KYNAR PREFINISHED 0.050" ALUM. GUTTER - SEE DETAIL A11.6
38. EXISTING SCOFFER FABRICATION TO REMAIN, MODIFIED AS DETAILED.
39. NEW ALUMINUM 2" x 1/8" GUTTER BRACKETS AT 2'-6" O.C. -PRIME AND PAINT TO MATCH GUTTER FINISH.
40. EXISTING VENT STACK (VTR) -INSTALL EXTENSION AS / IF REQUIRED.
41. NEW 2 x P.T. WOOD BLOCKING -ANCHOR PER FASTENING SCHEDULE (G02).
42. NEW 5/8" CDX PLYWOOD -ANCHOR PER FASTENING SCHEDULE (DWG. G02).
44. NEW CAST IRON ROOF DRAIN -ADJUST ELEVATION ABOVE DECK IN FIELD.
47. CONTINUOUS FOAM BACKER ROD FOR SEALANT -FIELD VERIFY SIZE NEEDED
48. REMOVE EXISTING RIGID INSULATION AS REQUIRED TO CREATE A 4 FOOT SQUARE, 3/4" PER FOOT SLOPED SURF AT DRAIN FROM TAPERED RIGID INSULATION WITH GYP. COVER BOARD -SEE DETAIL A12.
51. SELF-ADHESIVE MODIFIED BITUMEN UNDERLAYMENT MEMBRANE SYSTEM, TWO LAYER PHASED APPLICATION PER SPECS.
54. SMOOTH SBS MODIFIED BITUMEN STRIP-IN FLASHING MEMBRANE.
56. GRANULE SURFACED SBS MODIFIED BITUMEN MEMBRANE CAP FLASHING.
57. CONTINUOUS NON-COMBUSTIBLE METAL OR FIBER CANT PER SPECS.
58. SMOOTH SURFACED SBS MOD. BIT. MEMBRANE FLASHING INTERPLY SHEET.
59. KYNAR PRE-FIN. 0.040" ALUM. VALLEY METAL -SEE DETAIL A05.3.
61. KYNAR PREFINISHED 0.040" ALUM. DRIP EDGE FLASHING -SEE DETAIL A08.1
62. 4" PREFORMED LEAD FLASHING "BOOT" -ROLL OVER AND DOWN INTO PIPE WITHOUT TEARING AS SHOWN, PRIME AS REQUIRED.
63. 36" SQUARE, 4" LEAD FLASHING SHEET AT ROOF DRAIN, PRIME AS REQ'D.
65. GRANULE SURFACED SBS MODIFIED BITUMEN CAP SHEET AT FIELD OF ROOF.
70. SMOOTH SURFACED SBS MOD. BIT. INTERPLY MEMBRANE PER SPECS.
106. PROVIDE 3' (MIN.) LAP JOINT WITH DOUBLE ROWS OF CONT. SEALANT.
111. NEW 3" WIDE RETAINER CLEAT @ 18" O.C. MAX. WITH 2 FASTENERS MIN. - BEND UP IN FIELD TO SECURE COUNTER FLASHING.
120. WOOD CURBS FROM 2 x 4 STUDS / FRAMING @ 16" O.C. -FIELD VERIFY HEIGHT.
121. 24 GA. GALV. STL. CONT. BLOCKING FOR TILE ANCHORAGE AT HIP, RIDGE & RAKE EDGE - SEAL TO UNDERLAYMENT AND ANCHOR WITH #2 x 2" ST. STL. SCREWS AT 12" O.C. ON EACH SIDE.
122. CONCRETE ROOF TILE -INSTALL PER MANUFACTURER'S INSTRUCTIONS
123. BUILDING CODE AND TILE MANUFACTURER APPROVED FOAM TILE ADHESIVE -APPLY PER MANUFACTURER'S DIRECTIONS AND PRODUCT APPROVALS.
124. NATURAL COLOR MORTAR -APPLY PER MANUFACTURER'S DIRECTIONS.
133. EXIST. P.T. WOOD BLOCKING OR TRIM TO REMAIN, IF EXPOSED, REPLACE IN "LIKE-KIND" WHERE DAMAGED OR DETERIORATED PER UNIT PRICES.
138. MFR'S APPROVED FABRIC REINFORCED LIQUID APPLIED FLASHING SYSTEM TO SEAL METAL TO-MEMBRANE JOINT.
149. 26 GA. ST. STL. CONICAL SEALANT COVER -FRICTION FIT IN FIELD & SECURE.
170. APPROVED MFR'S TROUBLEABLE MODIFIED BITUMEN MASTIC 4/OR ADHESIVE.
- A. SIDE MOUNTED BASE FOR LIGHTNING PROTECTION AIR TERMINAL OR CABLE, SECURE TO VERTICAL FACE OF FLASHING WITH EPOXY ADHESIVE.
- B. EXISTING GYPSUM COVERBOARD TO REMAIN -REPLACE IN "LIKE-KIND" WHERE DAMAGED OR DETERIORATED PER UNIT PRICE ALLOWANCES.
- C. NEW TAPERED RIGID INSULATION CRICKET AT 3/8" PER FOOT MIN. SLOPE
- D. LEAD FREE SELF-ADHERED SHEET FLASHING 'WAKAFLEX'.
- E. TWO-LAYERS OF SELF-ADHERED MODIFIED BITUMEN UNDERLAYMENT.
- F. MFR'S STD. NON-CORROSIVE CONTINUOUS METAL EAVE CLOSURE PIECE.
- G. EXISTING PRE-FINISHED METAL WALL PANEL TO REMAIN UNCHANGED.
- H. NEW ST. STL. COUNTERFLASHING -INSERT UP AND BEHIND EXISTING COPING CAP AND SECURE -SIMILAR TO DETAIL A06.5, FIELD VERIFY DIMENSIONS.
- J. 1/4" DIA. ST. STL. SCREW WITH NEOPRENE BACKED METAL SEALING WASHERS @ 8" ON CENTER -SEE FASTENER SCHEDULE, DWG. G02.
- K. 24 GA. CONT. ST. STL. ANGLE FLASHING PER TILE MFR'S RECOMMENDATIONS.
- L. #2x x 2" LONG ST. STL. SCREW WITH NEOPRENE SEALING WASHER @ 12" O.C. MAX. (TWO MIN PER EACH SIDE OF CURB).
- M. ST. STL. FLASHING GREECH WITH INTEGRAL DECK FLANGE AND COLLAR WITH CONICAL SEALANT COVER, -INSTALL EITHER 1 OR 2-PC. 24 GA. SOLDERED SLEEVE - USE SBC INDUSTRIES MODEL PL/D & PL/S (ROUND); SQT/D & SQT/S (SQUARE), OR APPROVED EQUIVALENT.
- N. WRAP ROOF DRAIN BOWL AND LEADER PIPE WITH INSULATION FOR FIRST 10 FEET (MINIMUM) OF PIPE RUN -SEE SPECIFICATIONS.
- O. 1/4" DIA. x 2" LG. 'RAULI' Z-MAC 'NAIL-IN' WITH ST. STL. DRIVE PIN @ 4" O.C.



## REVISIONS

DOCUMENT HISTORY

DESCRIPTION
-------------


[illegible]



---

---

---

---

**SEABREEZE HIGH SCHOOL  
REPLACE TLE ROOF AND COAT  
FLAT ROOF BLDG. 14**  
VCS Project NO. 2448040

2700 N OLEANDER AVE, DAYTONA BEACH, FL 32118

Architect  
JAMES W. RIPLEY

DESIGN  
JWISSUE C  
24.6

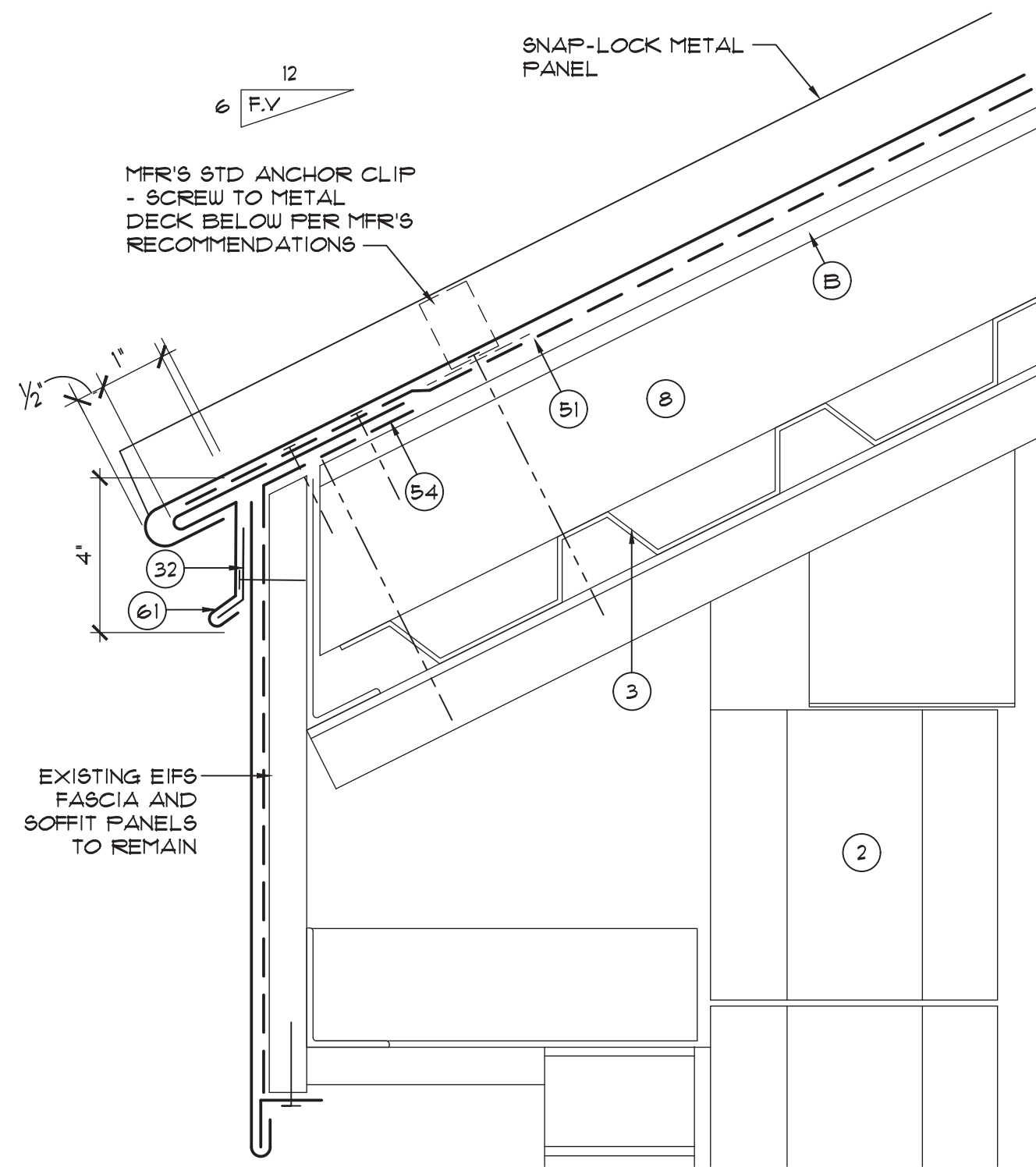
SHEET

# LIGHTNING PROTECTION AND DOWNPOUT FABRICATION DETAILS

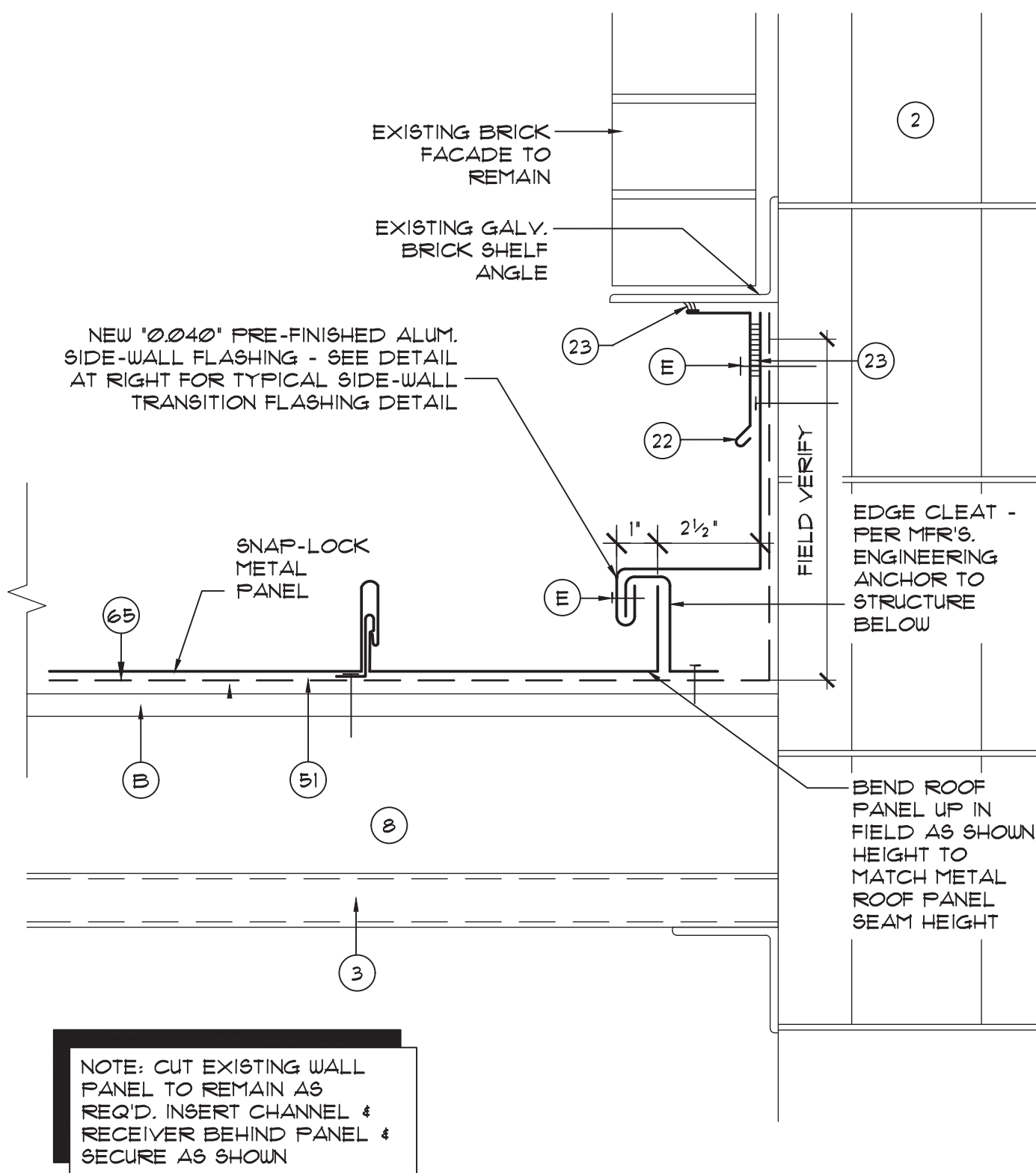
DRAWING NO.

A13

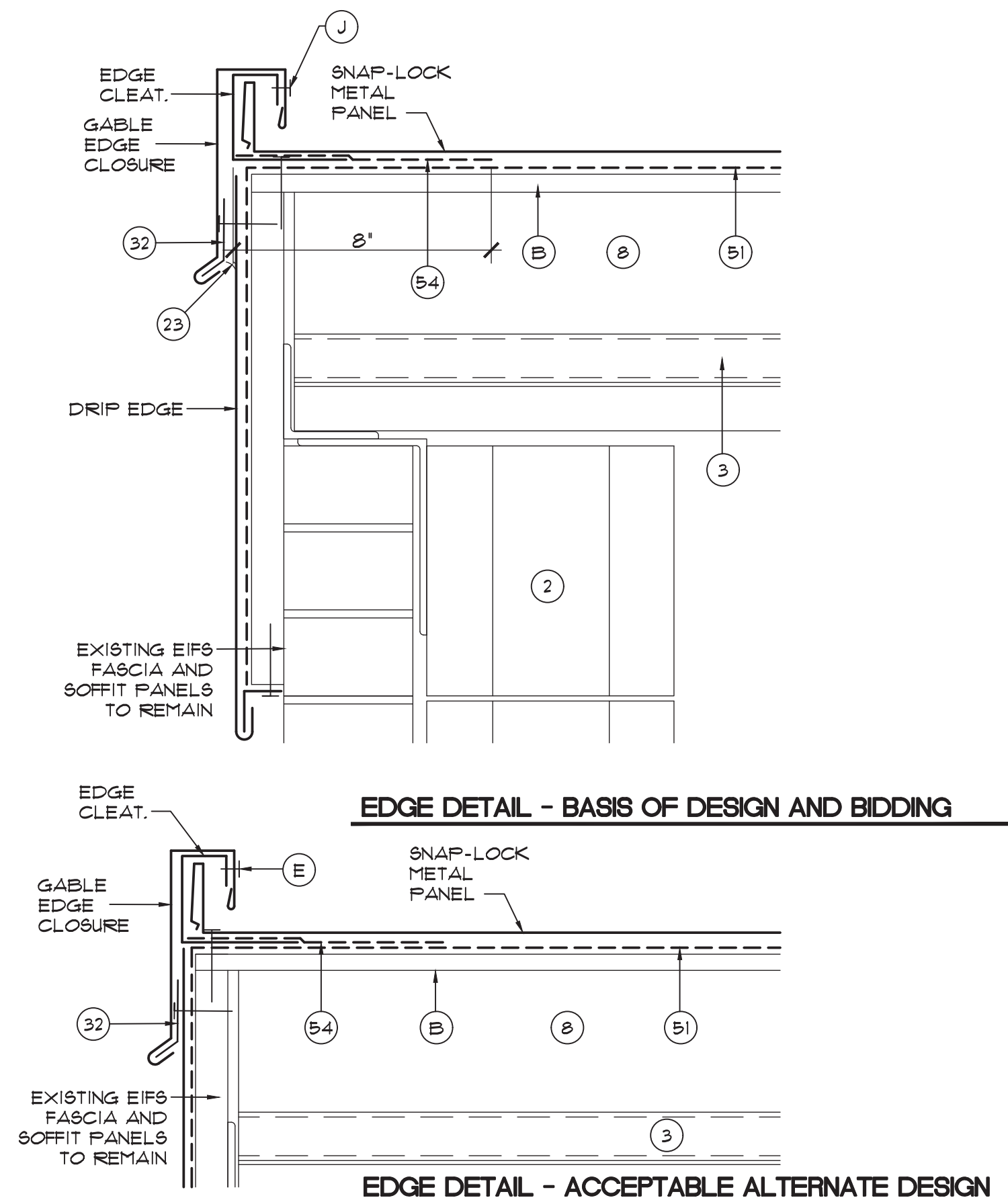




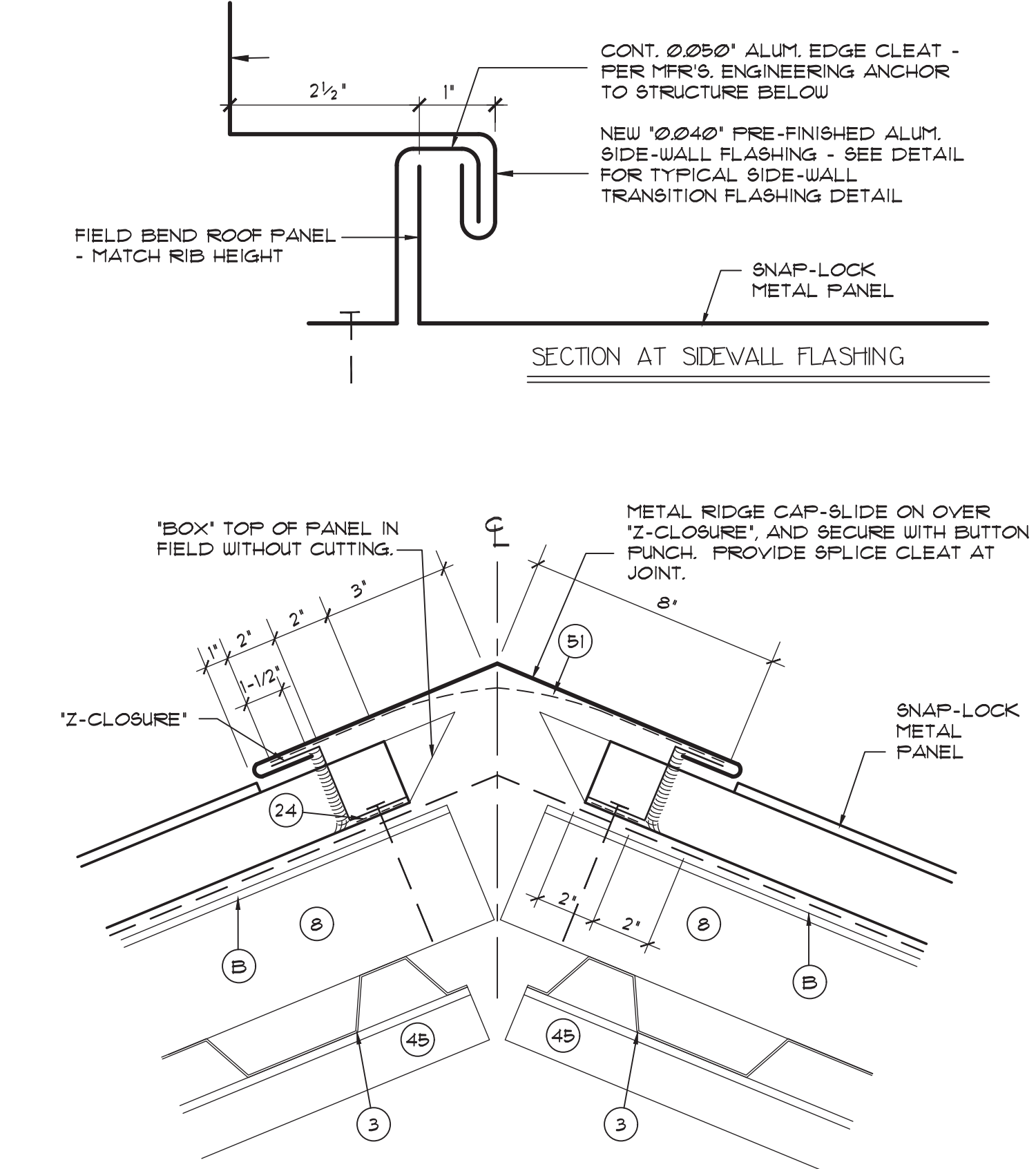
**A14.1** BID ALTERNATE -TYPICAL DRIP  
EDGE FLASHING AT STEEP-SLOPE ROOF  
SCALE: 3' = 1'-0"



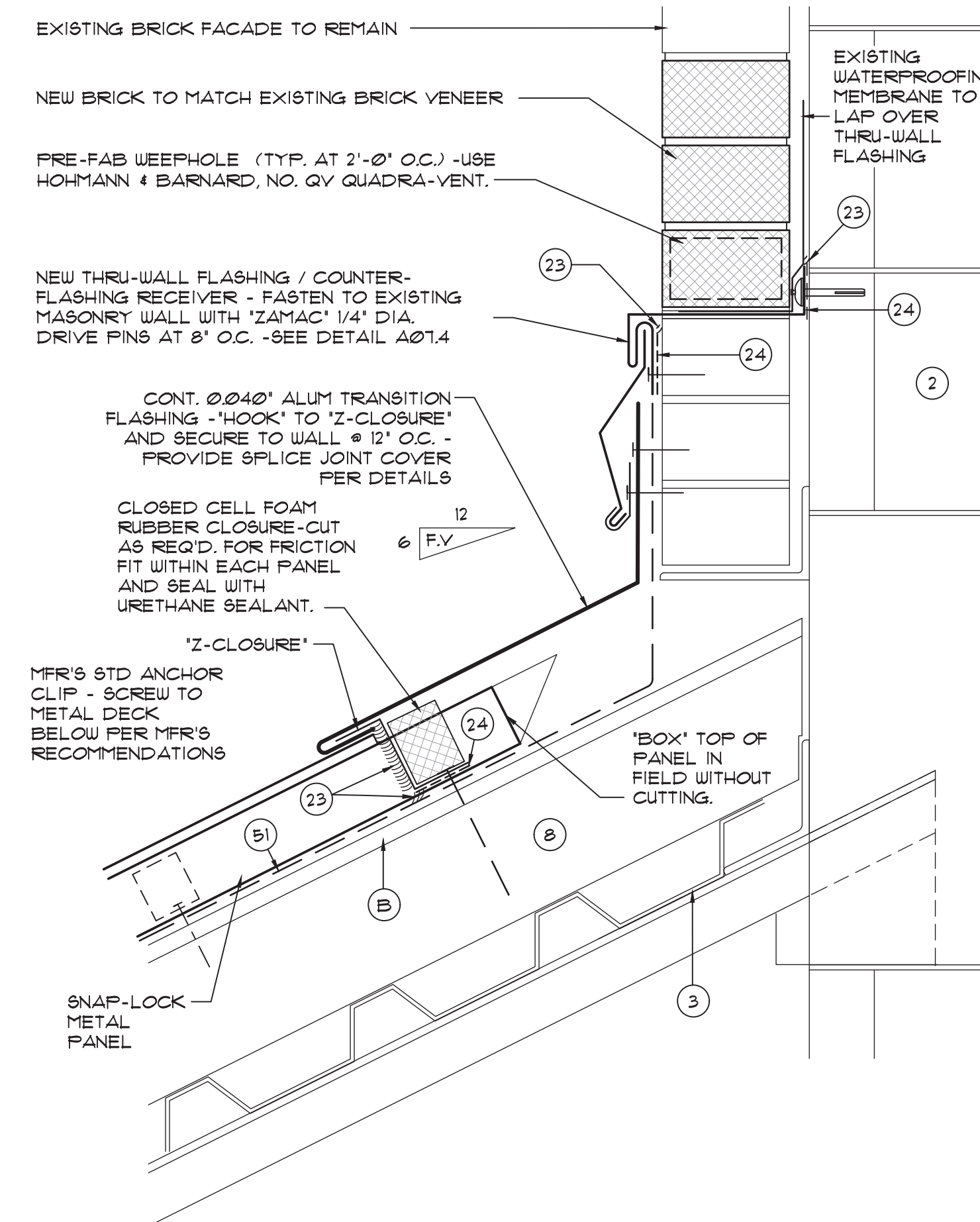
**A14.4** BID ALTERNATE -RAKEWALL FLASHING  
DETAIL AT STEEP SLOPE ROOF  
SCALE: 3' = 1'-0"



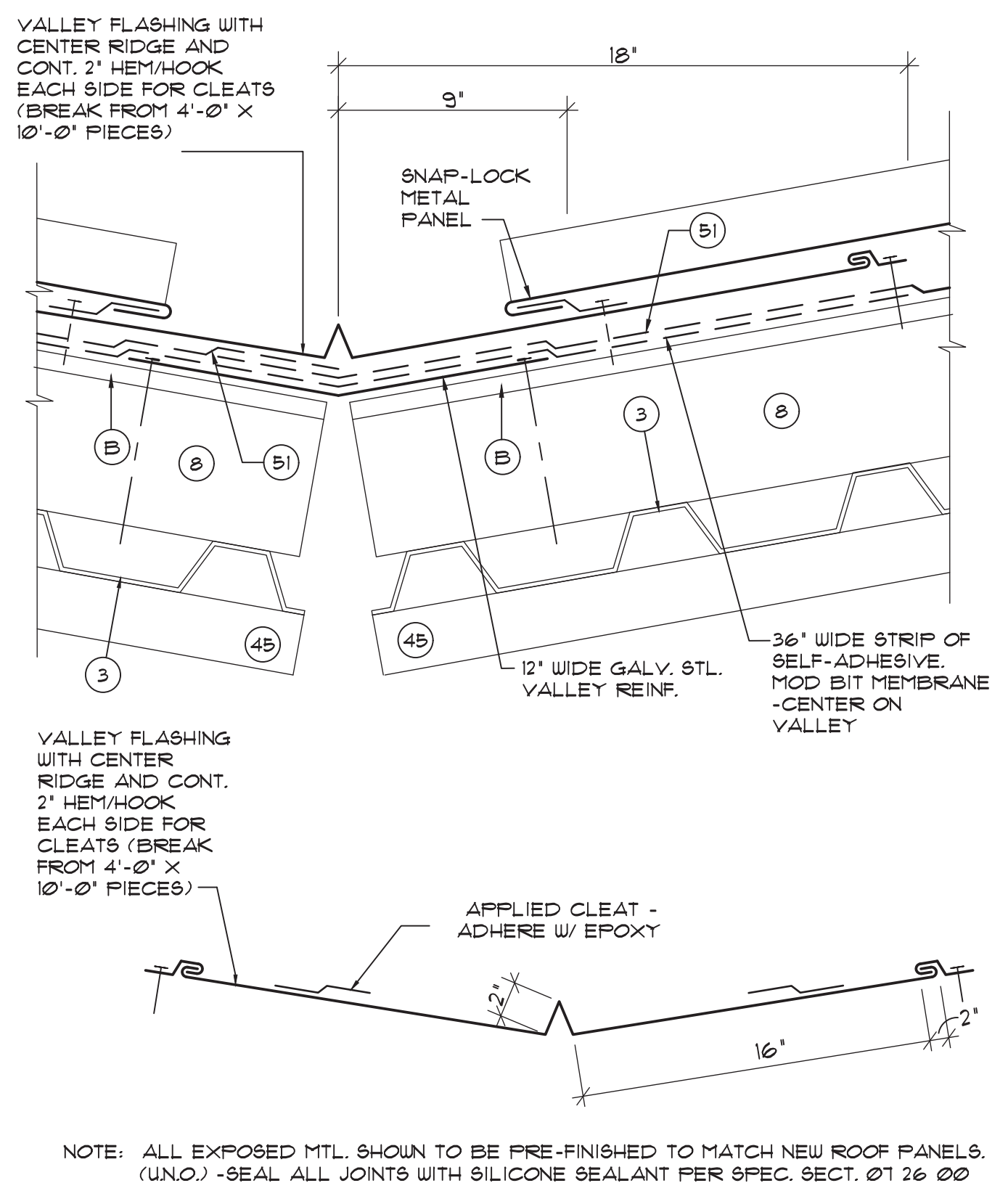
**A14.2** BID ALTERNATE -TYPICAL RAKE  
EDGE FLASHING AT STEEP-SLOPE ROOF  
SCALE: 3' = 1'-0"



**A14.5** TYPICAL HIP AND RIDGE FLASHING DETAIL  
SCALE: NONE



**A14.3** BID ALTERNATE -HEADWALL FLASHING  
DETAIL AT STEEP SLOPE ROOF  
SCALE: 3' = 1'-0"



**A14.6** TYPICAL VALLEY FLASHING  
AND ROOF PANEL ANCHORAGE  
SCALE: NONE

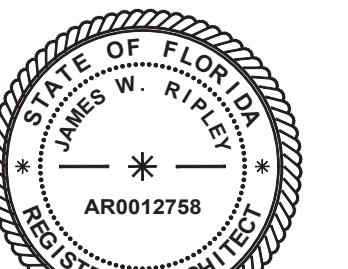
## DETAIL NOTES

- EXISTING WALL CONSTRUCTION TO REMAIN UNCHANGED.
- EXISTING STRUCTURAL DECK TO REMAIN, SEE SCHEDULE FOR DECK TYPE.
- EXISTING PARAPET WALL CONSTRUCTION TO REMAIN UNCHANGED.
- EXISTING ROOF MEMBRANE SYSTEM TO REMAIN UNCHANGED, REPAIR AS DEFINED UNDER THE UNIT PRICE ALLOWANCES.
- EXISTING NON-TAPERED RIGID INSULATION BOARD TO REMAIN UNCHANGED, REPLACE ANY WET INSULATION (SEE INFRARED REPORT) AS DEFINED UNDER THE UNIT PRICE ALLOWANCES.
- EXISTING MECHANICAL EQUIPMENT - REMOVE AND REINSTALL AS REQUIRED.
- EXISTING CURB CONSTRUCTION TO REMAIN AND BE REUSED AS DETAILED.
- NEW 1/4" THICK GYPSUM ROOF COVERBOARD PER SPECIFICATIONS.
- CONTINUOUS SURFACE APPLIED ALUM. TERMINATION BAR -SEE DETAIL A13.6.
- CONT. SURFACE MOUNTED COUNTERFLASHING - SEE DETAILS A05.2/A06.5
- SEALANT PER SPECIFICATIONS - CONTINUOUS TOOLED BEAD (UNO.).
- CONTINUOUS DOUBLE-SIDED BUTYL FLASHING TAPE PER SPECIFICATIONS.
- CONTINUOUS RECEIVER MOUNTED COUNTERFLASHING -SEE DETAIL A07.4.
- 22 GA. ST. STL. OR 0050" ALUM. CONTINUOUS CLEAT -SEE DETAIL AS NOTED.
- NEW KYNAR PREFINISHED 0050" ALUM. GUTTER - SEE DETAIL A11.6
- EXISTING SCUPPER FABRICATION TO REMAIN, MODIFIED AS DETAILED.
- NEW ALUMINUM 2" x 1/8" GUTTER BRACKETS AT 2'-6" O.C. -PRIME AND PAINT TO MATCH GUTTER FINISH.
- EXISTING VENT STACK (VTR) -INSTALL EXTENSION AS / IF REQUIRED.
- NEW 2 x 4 P.T. WOOD BLOCKING -ANCHOR PER FASTENING SCHEDULE (G02).
- NEW 5/8" CDX PLYWOOD -ANCHOR PER FASTENING SCHEDULE (DUG. G02).
- NEW CAST IRON ROOF DRAIN -ADJUST ELEVATION ABOVE DECK IN FIELD.
- CONTINUOUS FOAM BACKER ROD FOR SEALANT -FIELD VERIFY SIZE NEEDED
- REMOVE EXISTING RIGID INSULATION AS REQUIRED TO CREATE A 4 FOOT SQUARE, 3/4" PER FOOT SLOPED BUMP AT DRAIN FROM TAPERED RIGID INSULATION WITH GYP. COVER BOARD -SEE DETAIL A12.
- SELF-ADHESIVE MODIFIED BITUMEN UNDERLAYMENT MEMBRANE SYSTEM, TWO LAYER PHASED APPLICATION PER SPECS.
- SMOOTH SBS MODIFIED BITUMEN STRIP-IN FLASHING MEMBRANE.
- GRANULE SURFACED SBS MODIFIED BITUMEN MEMBRANE CAP FLASHING.
- CONTINUOUS NON-COMBUSTIBLE METAL OR FIBER CANT PER SPECS.
- SMOOTH SURFACED SBS MOD. BIT. MEMBRANE FLASHING INTERPLY SHEET.
- KYNAR PRE-FIN. 0040" ALUM. VALLEY METAL -SEE DETAIL A05.3.
- KYNAR PREFINISHED 0040" ALUM. DRIP EDGE FLASHING -SEE DETAIL A05.1
- 4" PREFORMED LEAD FLASHING "BOOT" -ROLL OVER AND DOWN INTO PIPE WITHOUT TEARING AS SHOWN, PRIME AS REQUIRED.
- 36" SQUARE, 4" LEAD FLASHING SHEET AT ROOF DRAIN, PRIME AS REQ'D.
- GRANULE SURFACED SBS MODIFIED BITUMEN CAP SHEET AT FIELD OF ROOF.
- SMOOTH SURFACED SBS MOD. BIT. INTERPLY MEMBRANE PER SPECS.
- PROVIDE 3" (MIN.) LAP JOINT WITH DOUBLE ROUS OF CONT. SEALANT.
- NEW 3" WIDE RETAINER CLEAT @ 18" O.C. MAX. WITH 2 FASTENERS MIN. - BEND UP IN FIELD TO SECURE COUNTER FLASHING.
- WOOD CURB FROM 2 x 4 STUDS / FRAMING @ 16" O.C. -FIELD VERIFY HEIGHT.
- 24 GA. GALV. STL. CONT. BLOCKING FOR TILE ANCHORAGE AT HIP, RIDGE & RAKE EDGE - SEAL TO UNDERLAYMENT AND ANCHOR WITH #2 x 2" ST. STL. SCREWS AT 12" O.C. ON EACH SIDE.
- CONCRETE ROOF TILE -INSTALL PER MANUFACTURER'S INSTRUCTIONS
- BUILDING CODE AND TILE MANUFACTURER APPROVED FOAM TILE ADHESIVE -APPLY PER MANUFACTURER'S DIRECTIONS AND PRODUCT APPROVALS.
- NATURAL COLOR MORTAR -APPLY PER MANUFACTURER'S DIRECTIONS.
- EXIST. P.T. WOOD BLOCKING OR TRIM TO REMAIN, IF EXPOSED, REPLACE IN "LIKE-KIND" WHERE DAMAGED OR DETERIORATED PER UNIT PRICES.
- MFR'S APPROVED FABRIC REINFORCED LIQUID APPLIED FLASHING SYSTEM TO SEAL METAL-TO-MEMBRANE JOINT.
- 26 GA. ST. STL. CONICAL SEALANT COVER -FRICTION FIT IN FIELD & SECURE.
- APPROVED MFR'S TROUBLEABLE MODIFIED BITUMEN MASTIC 4/OR ADHESIVE.
- SIDE MOUNTED BASE FOR LIGHTNING PROTECTION AIR TERMINAL OR CABLE, SECURE TO VERTICAL FACE OF FLASHING WITH EPOXY ADHESIVE.
- EXISTING GYPSUM COVERBOARD TO REMAIN -REPLACE IN "LIKE-KIND" WHERE DAMAGED OR DETERIORATED PER UNIT PRICE ALLOWANCES.
- NEW TAPERED RIGID INSULATION CRICKET AT 3/8" PER FOOT MIN. SLOPE
- LEAD FREE SELF-ADHERED SHEET FLASHING "WAKAFLEX".
- TWO-LAYERS OF SELF-ADHERED MODIFIED BITUMEN UNDERLAYMENT.
- MFR'S STD. NON-CORROSIVE CONTINUOUS METAL EAVE CLOSURE PIECE.
- EXISTING PRE-FINISHED METAL WALL PANEL TO REMAIN UNCHANGED.
- NEW ST. STL. COUNTERFLASHING -INSERT UP AND BEHIND EXISTING COPING CAP AND SECURE - SIMILAR TO DETAIL A06.5, FIELD VERIFY DIMENSIONS.
- 1/4" DIA. ST. STL. SCREW WITH NEOPRENE BACKED METAL SEALING WASHERS @ 8" ON CENTER -SEE FASTENER SCHEDULE, DUG. G02.
- 24 GA. CONT. ST. STL. ANGLE FLASHING PER TILE MFR'S RECOMMENDATIONS.
- #12 x 2" LONG ST. STL. SCREW WITH NEOPRENE SEALING WASHER @ 12" O.C. MAX. (TWO MIN. PER EACH SIDE OF CURB).
- ST. STL. FLASHING SLEEVE WITH INTEGRAL DECK FLANGE AND COLLAR WITH CONICAL SEALANT COVER -INSTALL EITHER 1 OR 2-PC. 24 GA. SOLDERED SLEEVE - USE S.B.C. INDUSTRIES MODEL PL/D 4 PL/8 (ROUND), SG/D 4 SG/T8 (SQUARE), OR APPROVED EQUAL.
- WRAP ROOF DRAIN BOUL AND LEADER PIPE WITH INSULATION FOR FIRST 10 FEET (MINIMUM) OF PIPE RUN -SEE SPECIFICATIONS.
- 1/4" DIA. x 2' L.G. "RAWL" ZAMAC "NAIL-IN" WITH ST. STL. DRIVE PIN @ 4" O.C.



**A/R/C**  
Associates  
Incorporated

Architecture  
Roof Consulting  
Construction Technology  
LIC. NBR AR-0007684  
601 North Fern Creek Avenue  
Suite 100 Orlando, FL  
32803-4899  
Tel. (407) 896-7875  
Fax. (407) 896-6043  
COPYRIGHT © 2024 A/R/C ASSOCIATES, INC.



04/25/2024  
JAMES W. RIPLEY  
AR0012758

REVISIONS		
NO.	DATE	DESCRIPTION
1	4/25/24	ADD METAL ROOF BID ALTERNATE

**SEABREEZE HIGH SCHOOL**  
**REPLACE TILE ROOF AND COAT**  
**FLAT ROOF BLDG. 14**  
VCS Project NO. 2448040  
2700 N OLEANDER AVE, DAYTONA BEACH, FL 32118

Architect JAMES W. RIPLEY	
DESIGNED BY JWR	DRAWN BY TJG
ISSUE DATE 04/25/2024	AE PROJECT NUMBER 23040.00
SHEET TITLE BID ALTERNATE -METAL ROOFING -TYPICAL DETAILS	
DRAWING NO. A14	