

# Quick Reference Emergency Plan

## for a Student with Diabetes

Photo

### Hypoglycemia (Low Blood Sugar)

Student's Name \_\_\_\_\_

Grade/Teacher \_\_\_\_\_

Date of Plan \_\_\_\_\_

Emergency Contact Information:

Mother/Guardian \_\_\_\_\_

Father/Guardian \_\_\_\_\_

Home phone \_\_\_\_\_

Work phone \_\_\_\_\_

Cell \_\_\_\_\_

Home phone \_\_\_\_\_

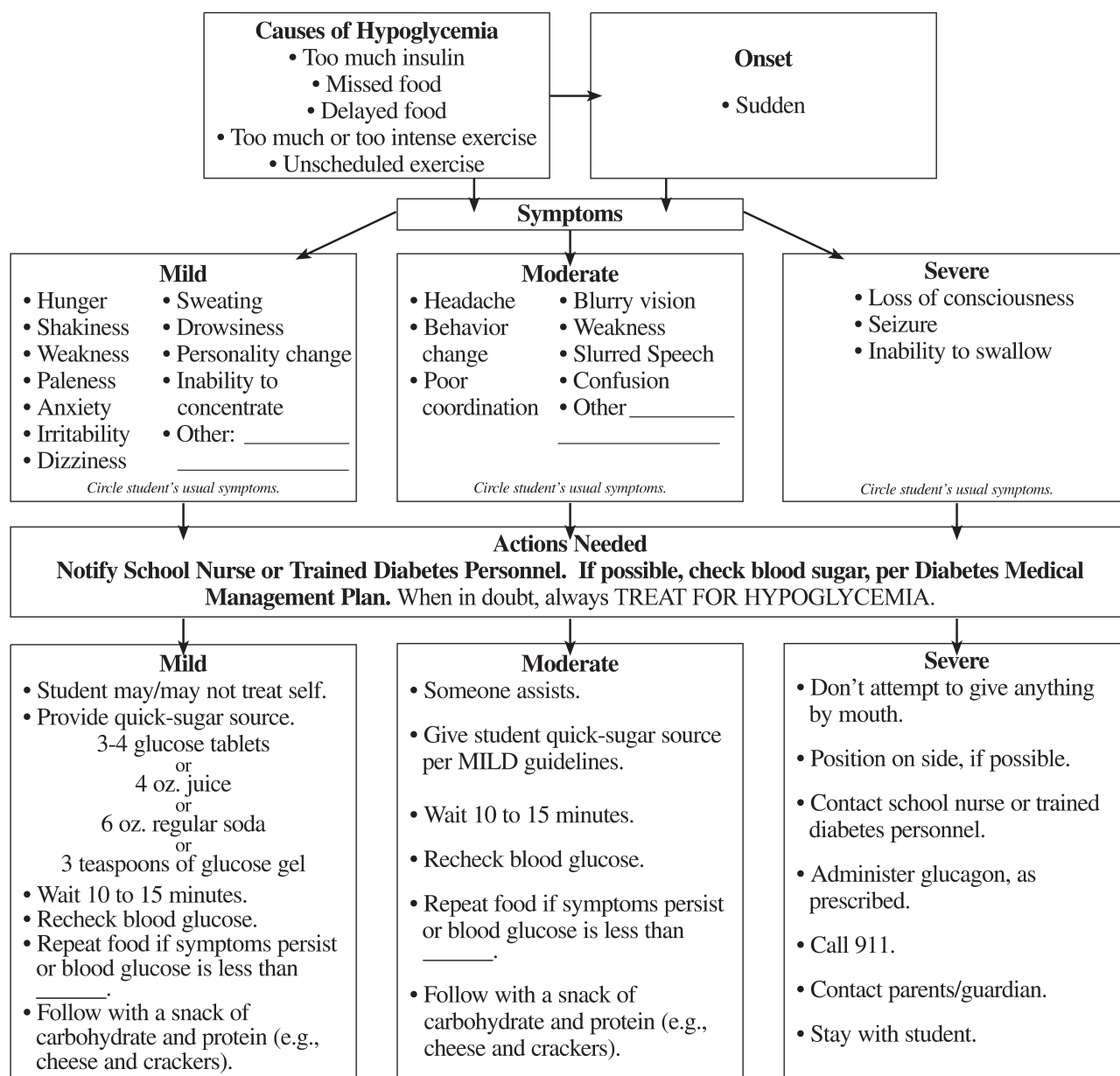
Work phone \_\_\_\_\_

Cell \_\_\_\_\_

School Nurse/Trained Diabetes Personnel \_\_\_\_\_

Contact Number(s) \_\_\_\_\_

**Never send a child with suspected low blood sugar anywhere alone.**



The *Quick Reference Emergency Plan* can be found in NDEP's "Helping the Student with Diabetes Succeed: A Guide for School Personnel," which is available for free download at [http://www.ndep.nih.gov/diabetes/pubs/youth\\_ndepschoolguide.pdf](http://www.ndep.nih.gov/diabetes/pubs/youth_ndepschoolguide.pdf)

# Quick Reference Emergency Plan

## for a Student with Diabetes

### Hyperglycemia (High Blood Sugar)

Photo

Student's Name \_\_\_\_\_

Grade/Teacher \_\_\_\_\_

Date of Plan \_\_\_\_\_

Emergency Contact Information:

Mother/Guardian \_\_\_\_\_

Father/Guardian \_\_\_\_\_

Home phone \_\_\_\_\_

Work phone \_\_\_\_\_

Cell \_\_\_\_\_

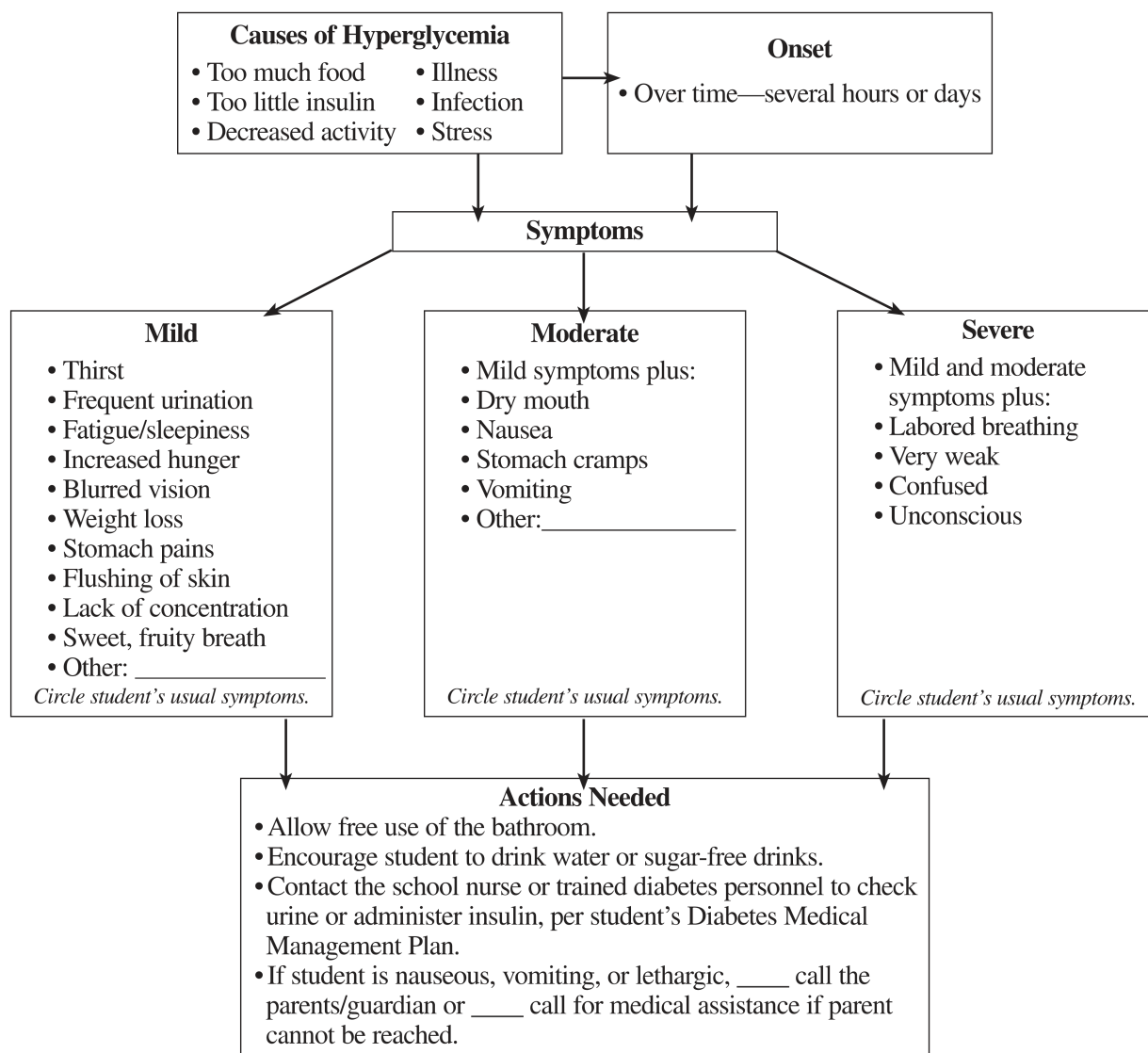
Home phone \_\_\_\_\_

Work phone \_\_\_\_\_

Cell \_\_\_\_\_

School Nurse/Trained Diabetes Personnel \_\_\_\_\_

Contact Number(s) \_\_\_\_\_



The *Quick Reference Emergency Plan* can be found in NDEP's "Helping the Student with Diabetes Succeed: A Guide for School Personnel," which is available for free download at [http://www.ndep.nih.gov/diabetes/pubs/youth\\_ndepschoolguide.pdf](http://www.ndep.nih.gov/diabetes/pubs/youth_ndepschoolguide.pdf)