

**QUALITY** 2024  
**PROFILE**



Dear Worthington Schools Community,

As we continue to grow and evolve, it's essential for us to share with you, our valued stakeholders, the journey we are on together. This is why I am pleased to introduce the Worthington Schools Quality Profile for 2024.

The Quality Profile is more than just a document; it reflects our commitment to transparency and open communication. We believe in keeping you informed and involved in our collective mission: to empower a community of learners who will change the world.



Our approach goes beyond standardized measures of success like the state report card. While these metrics are important, they don't fully capture the breadth and depth of our efforts to serve each student. In the Quality Profile, you will find an overview highlighting how we prepare students for life beyond graduation. This includes our unique educational programs, diverse extracurricular activities, innovative teaching methods, and active engagement with our local community and parents.

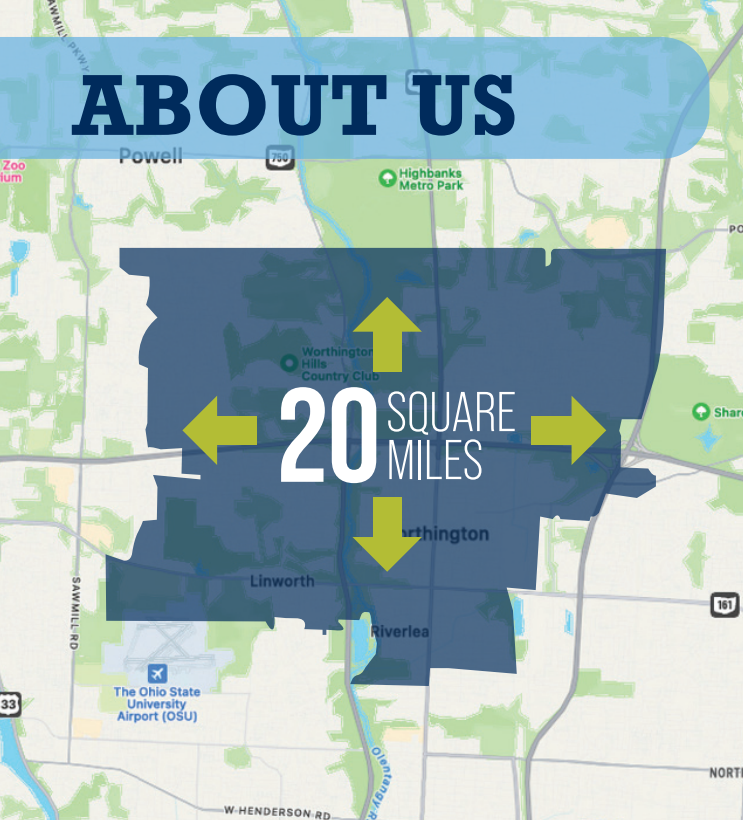
We are excited for you to learn more about Worthington Schools - who we are, what we stand for, and where we're heading. Your involvement and support are crucial to our success, and we look forward to your continued partnership in shaping the future of our schools.

Thank you for your ongoing commitment to our students, staff, and community.

Sincerely,  
Dr. Trent Bowers  
Superintendent



# ABOUT US



## DISTRICT BOUNDARIES:

A 20 square mile area encompassing Columbus, Riverlea, Worthington, and portions of Sharon and Perry Townships, with students from various addresses including Columbus, Dublin, Powell, Worthington, and Westerville.

## UNIFORM TAX RATE:

All residents in these areas pay the same school property tax rate.

## STUDENT POPULATION:



10,700

## LANGUAGES SPOKEN:



58

## ACADEMIC PROGRAMS AND SCHOOLS



21

## STAFF MEMBERS:



1,360



# ACADEMICS

689

College Credit Plus Students  
WK: 224  
TW: 465

21

AP Courses  
71% got 3+ on exam

989

Students Enrolled in AP



141

International Baccalaureate Students

225+

High School Course Offerings

90%

Students Going to College

# ACTIVITIES

32

High School Sports

69

High School Clubs



16

Middle School Sports

# SUPPORT

26

School Counselors

11

Mental Health Specialists

126

Intervention Specialists



9

Occupational Therapists

15

Speech Language Therapists

13

Psychologists

2

Board-Certified Behavioral Analysts

# FINANCIAL MANAGEMENT

Worthington Schools is committed to strategic and efficient financial management. Discover more about our approach and achievements in the Popular Annual Financial Report (PAFR).



## THIRD-PARTY ACCOLADES

30 Consecutive Awards for Excellence in Accounting.

Our district proudly maintains an **AA+ rating from Standard & Poor's**, reflecting our strong financial stewardship and commitment to fiscal responsibility. This top-tier rating signifies lower debt costs, enabling more efficient use of resources.

**S&P Global**  
Ratings

## COMMUNITY INVOLVEMENT

Our schools and the community work together closely. We welcome community volunteers into our schools and also volunteer in community projects. This partnership makes us all stronger.

- Circle of Grandparents
- Ready for Reading
- Student Mentors in Middle and High School
- Resource Pantry
- Service Hours

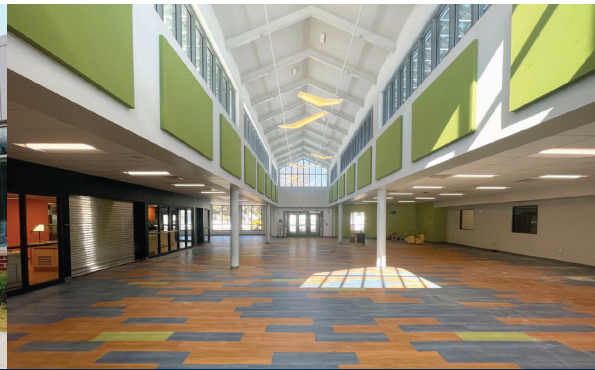


# MASTER FACILITIES PLANNING

Worthington Schools is actively updating its facilities through a community-led plan, ensuring the project aligns with the needs and vision of our students, staff, and residents.

## PHASE 1

- Completed to start the 2021-22 School Year
- Change grade configuration so that 6th graders go to middle school buildings instead of elementary buildings.
- Renovate and expand middle school buildings and reopen Perry Middle School
- Balance high school enrollment by moving east side elementary school from Thomas Worthington High School feeder pattern to Worthington Kilbourne High School.



## PORTRAIT OF A LEARNER

A collaborative, locally-developed, and globally-positioned effort aiming to shape the future vision of our schools.

Key Questions Addressed:

- What are the community's hopes and dreams for its students?
- Which skills and mindsets are crucial for success in a complex, evolving world?
- How should learning experiences be designed for equitable access?
- Discover more about this transformative initiative at the upcoming State of the Schools event, where the Portrait of a Learner will be officially unveiled.

## PHASE 2

- Under Construction - to be completed by winter 2026
- Renovation and major replacement for sections of TWHS
- Select renovations at WKHS



## PHASE 3

- Proposed Phase 3 - TBD
- Elementary school replacements





200 E Wilson Bridge Rd.  
Worthington, OH 43085

-  WorthingtonSchools
-  WorthingtonSchools
-  wcsdistrict

# YOU'RE INVITED!

## WORTHINGTON STATE OF THE SCHOOLS

March 13th, 7 pm @  
Worthington Kilbourne  
High School

- Dynamic student performances & compelling stories.
- Collaborate on our shared vision for Worthington Schools.
- A night to connect, reflect, and envision together.



ADD TO CALENDAR