

UPPER SCHOOL (2024-2025)

CIRCLE OF SUPPORT: Academic Strength & Progress of Each Student

Sacred Heart Greenwich supports the academic success of each student through individualized and programmatic resources. Below is a guide on resources and who to contact when support is needed.

Associate Head of School for Teaching and Learning

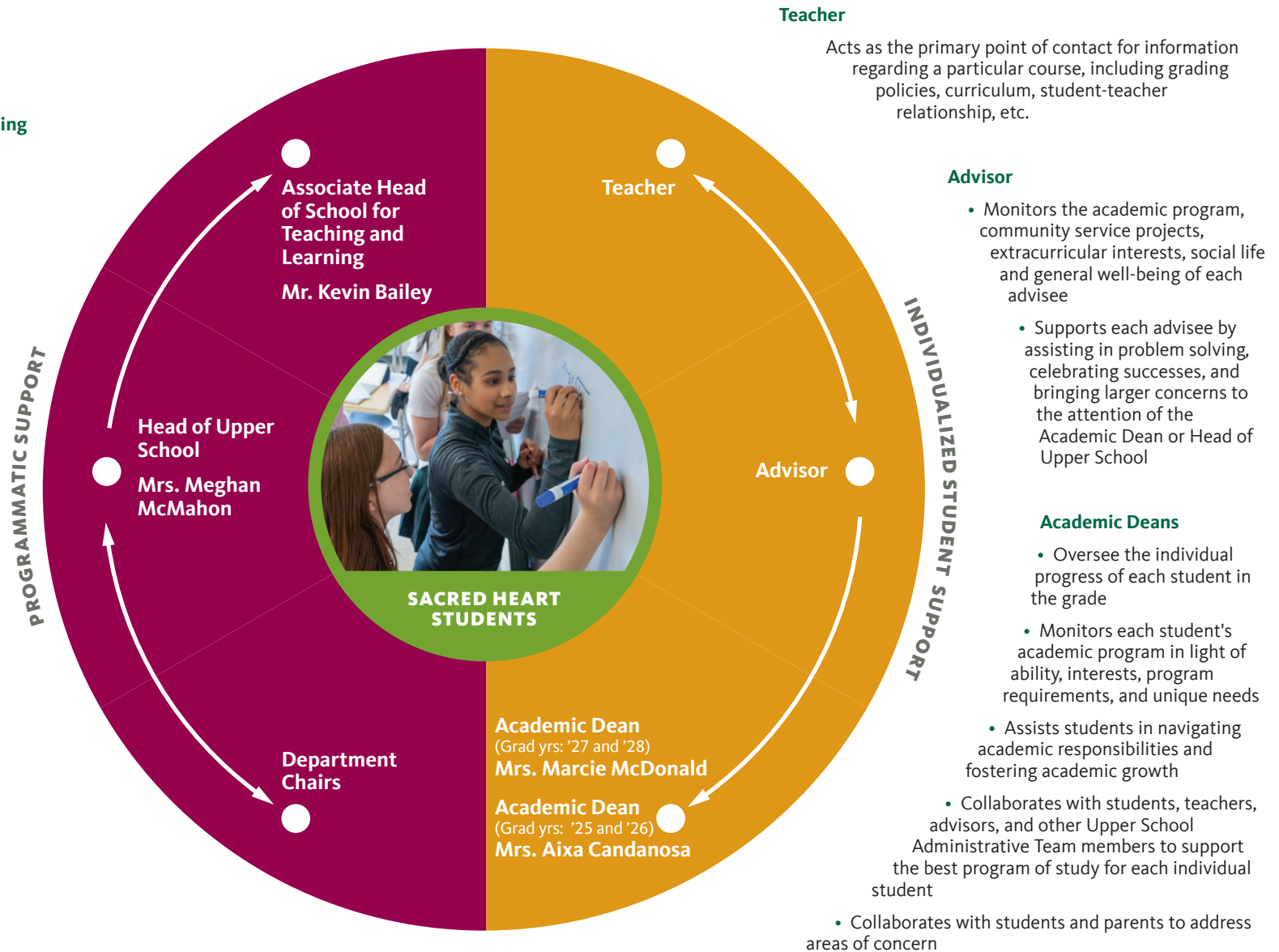
Responsible for delivering an early education – 12th grade learning, design, pedagogy, and curriculum assessment that drives outcomes

Head of Upper School

Responsible, with the support of Upper School Administrative Team, for the overall development of students in the Upper School, including curriculum, spiritual growth, arts, athletics and extracurriculars

Department Chairs

Oversees the faculty, curriculum, grading and placement policies within specific department



SACRED HEART
GREENWICH