

# LOWER SCHOOL (2024-2025)

## CIRCLE OF SUPPORT: Social/Emotional Well-Being & Development of Each Student

Sacred Heart Greenwich supports the social and emotional development of each student through individualized and programmatic resources. Below is a guide on resources and who to contact when support is needed.

### Associate Head of School for Student Life

Responsible for delivering an early childhood – 12th grade holistic experience that provides for the spiritual and leadership development of students

### Head of Lower School

Responsible, with the support of Lower School Administrative Team, for the overall development of students in the Lower School, including curriculum, spiritual growth, arts and extracurriculars

### Assistant Head of Lower School

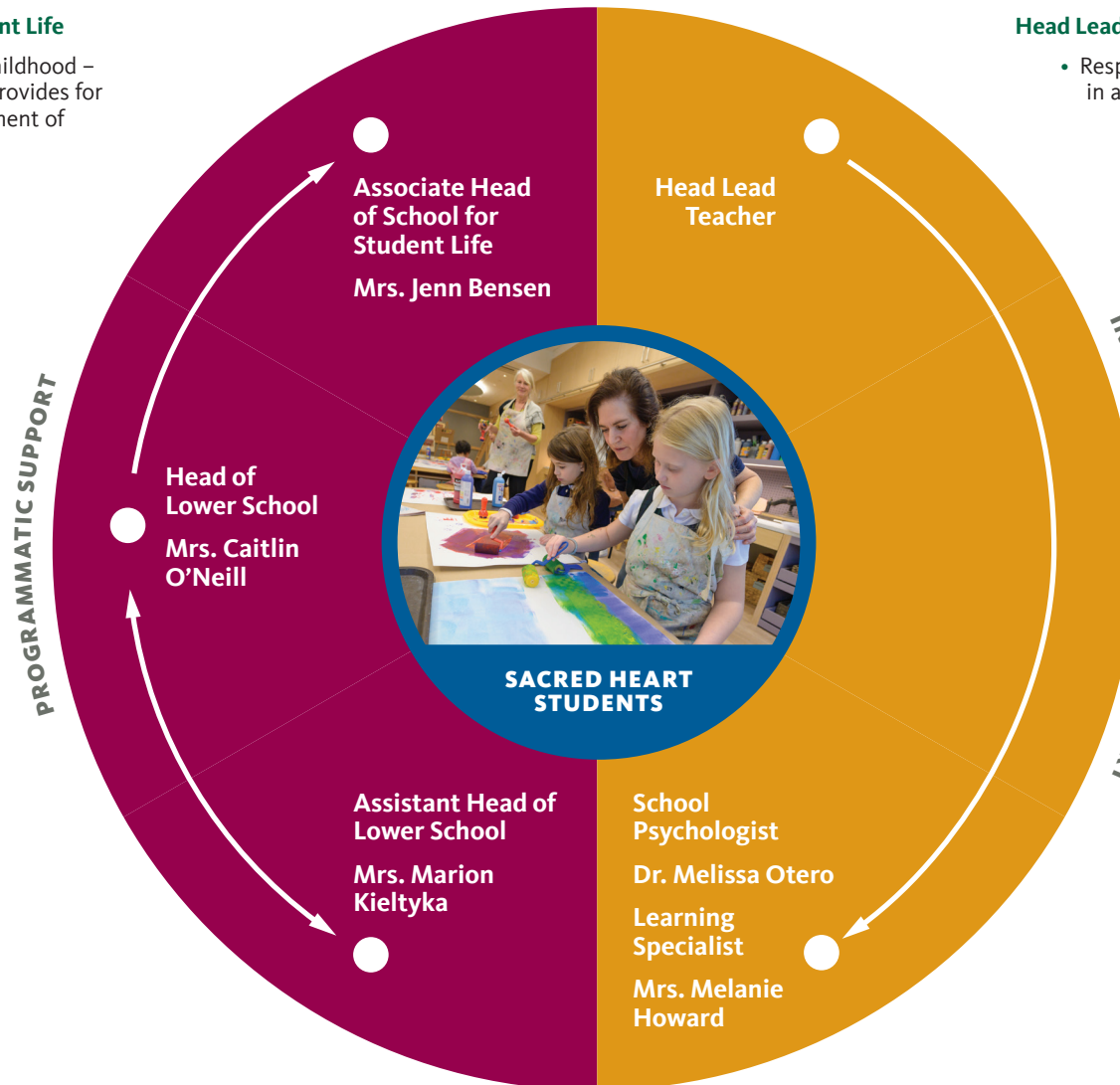
- Oversees programs, events, and communications to foster parent and larger community partnerships that further the mission of the School
- Acts as a liaison with admissions, communications, and special events teams

### Head Lead Teacher

- Responsible for enhancing the quality of life in all non-academic/co-curricular areas
- Manages Lower School disciplinary issues
- Oversees the daily events in the Lower School, including the general decorum and behavior of students

### School Psychologist / Learning Specialist

- Supports the overall social-emotional health and growth of students in the Lower School
- Provides direct support to students and collaborates with school administration, faculty, parents, and outside professionals as needed
- Offers professional support and input to the administration and student support teams to ensure that programming and intervention are meeting the social-emotional needs of the student body



**SACRED HEART**  
GREENWICH