



STOUGHTON AREA SCHOOL DISTRICT EXECUTIVE SUMMARY

PROVIDED BY FINDORFF

City of Stoughton, Wisconsin 7/12/24

River Bluff Campus

Check out the exciting progress at the River Bluff Campus! It may be difficult to see from the road, but footing and foundation wall pours are nearly complete for the gym addition and will be completely backfilled early next week. This will allow for the erection of the concrete masonry unit (CMU) structure to begin. Building underground mechanical, electrical, and plumbing (MEP) rough-ins are also set to kick off next week following the completion of foundations.

Demolition work continues at the District Office. After the building separation is complete, new foundations will be poured along the east elevation, and work on the enclosure will begin.



A view of the River Bluff addition progress captured from the roof of the District Office

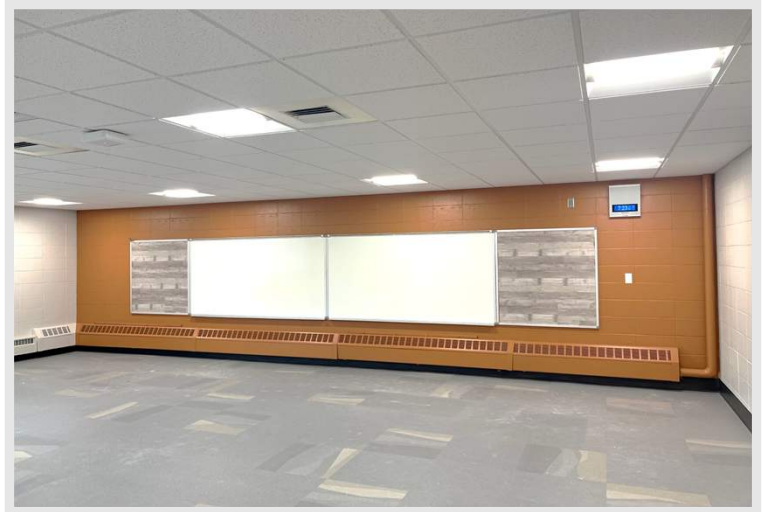
Kegonsa Elementary Update

The Past Few Weeks:

- Paint, ceilings, and flooring in west wing classrooms complete
- Install of new light fixtures complete in west wing classrooms
- Demo of existing fixtures and finishes on-going throughout
- Paint, ceiling, and flooring install underway in the library, music room, and south corridor classroom spaces

Coming Up!:

- Install of the new air handler and air-cooled condensing units
- New epoxy flooring in kitchen to be installed
- Install of new boilers to be completed
- Demo to continue in northwest wing classrooms
- Finishes to continue throughout



A sneak peak of the completed classroom finishes in the west wing of Kegonsa Elementary School

DID YOU KNOW?

The finishes at Kegonsa Elementary, home to grades kindergarten through 5th grade, will feature color coordinated finishes by area of the school. The east wing classrooms will showcase orange feature walls in each classroom with orange flooring in the corridor. Similarly, the south wing will be detailed with blue accents, and the north wing in purple.

Questions?

Senior Project Manager, Matt Claggett / 608.729.2155 / mclaggett@findorff.com

Findorff
BUILDING & BEYOND



STOUGHTON AREA SCHOOL DISTRICT EXECUTIVE SUMMARY

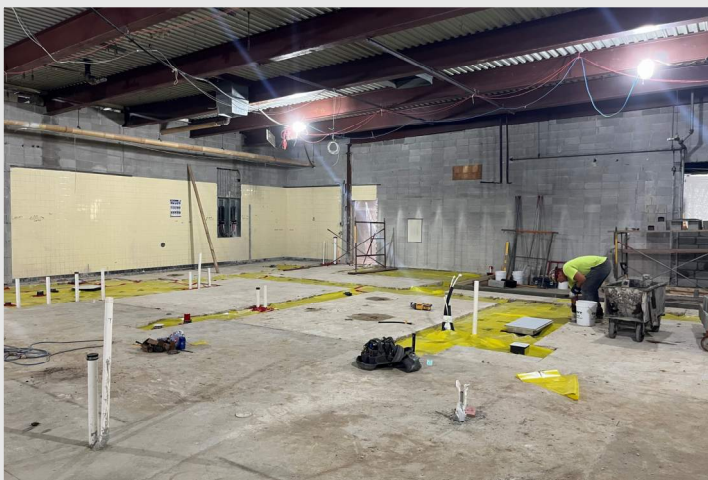
PROVIDED BY FINDORFF

City of Stoughton, Wisconsin 7/12/24

Stoughton High School

The construction progress at the High School Commons has reached several milestones recently. After a strong push in June, mass demo in the Commons, Kitchen, and Survery is complete. Following demo, steel stud wall framing began in the Commons, giving shape to the newly designed space. Overhead in the Commons, the openings for the five new skylights have been meticulously laid out in preparation for demo of the existing roof. In the Kitchen and Served, underground plumbing and electrical rough-ins to accommodate the new equipment have been completed along with patching of the floor slab.

Renovations continue in the science wing of the High School. Demo of the existing flooring is nearly complete in the classroom and office spaces and installation of the new resilient floor and base is underway. New ceiling grid and light fixtures are also going into place in the science classrooms. In the coming weeks, ceiling tile will be set, and final cleaning will commence to ready the spaces for students and staff.



A view of the plumbing and electrical underground rough-in progress just before the slab pour back in the High School Kitchen



A first look at the new flooring in a science classroom, check out those touches of Stoughton purple!

Yahara Site

The time has come to start foundations at the Yahara Site for the new Maintenance Building! Next week excavation will begin, and foundations will start to go into place. With rebar pre-tied and structural steel and metal paneling staged on-site, this project is ready to hit the ground running!

Right: a photo captured from the last Findorff drone flight on 6/17, tune in next time for some exciting photos as construction kicks off at Yahara!



Questions?

Senior Project Manager, Matt Claggett / 608.729.2155 / mclaggett@findorff.com

Findorff
BUILDING & BEYOND



STOUGHTON AREA SCHOOL DISTRICT EXECUTIVE SUMMARY

PROVIDED BY FINDORFF

City of Stoughton, Wisconsin 7/12/24



Top Left: classroom floor prepped with adhesive to receive new flooring at Kegonsa Elementary following paint and ceiling grid install



Top Right: a look down a corridor at the Stoughton High School following floor demo



Bottom Left: another photo captured of a classroom in the High School science wing following install of the new floor



Bottom Right: a view of the progress at River Bluff as the last stretch of foundation walls are formed up and ready to pour

Questions?

Senior Project Manager, Matt Claggett / 608.729.2155 / mclaggett@findorff.com

Findorff
BUILDING & BEYOND