

BUILDING FOR OUR STUDENTS' FUTURE

CAPITAL BOND: FEBRUARY 11, 2020



VOTER INFORMATION GUIDE

Read more to find out why Snohomish School District is asking for a capital bond to rebuild aging elementary schools, reduce the need for portable classrooms and make sure our school buildings continue to be a source of pride for our community.



Building for Our Students' Future

CAPITAL BOND | FEB. 11, 2020



Building for Our Students' Future: Our Community-Led Process

At Snohomish School District, we are proud of our great schools where our kids receive a quality education. We are also focused on making sure our students—no matter which school they attend—have access to an optimal learning environment provided by intentionally designed learning spaces that support our educational standards.

The Citizens' Facility Advisory Committee (CFAC) worked hard this past year to review the conditions of our school buildings, explore demographic and enrollment projections and prioritize needs. Based on this information, the CFAC made a recommendation to the Board of Directors outlining a vision for capital improvements.



The February 2020 Bond Will:

Provide access and opportunity for each student

Funds from the bond will be used to replace our oldest elementary schools, so all students have the same access to an optimal learning environment no matter which school they attend. Improvements include adding more classroom space to reduce the use of portable classrooms across the district.

Enhance school safety and security for students and schools

Safety and security upgrades will include improved digital access control systems, new district-wide radio system, redesigned vestibules in secondary schools, new and upgraded existing camera systems, emergency responder enhancements, and improved school lockdown capabilities.

Continue community pride

This bond will ensure our schools continue to be a source of pride in our community. We know that the success of our students and quality schools are a reflection of our community and a source of pride.

What is the Cost to Build for Our Students' Future?

If approved by voters on February 11, 2020, the tax rate for the Snohomish School District capital bond would be \$0.98 per \$1,000 of assessed valuation (data based on 2019 voter-approved Snohomish School District tax rates).

In Snohomish School District, the average assessed home value is \$460,000, the cost would be about \$450/year or \$38/month.



All funding approved by Snohomish voters stays local and is used to support education in the Snohomish School District.

Voter-Approved Snohomish School District Local Tax Rates (per \$1,000 of assessed property value)



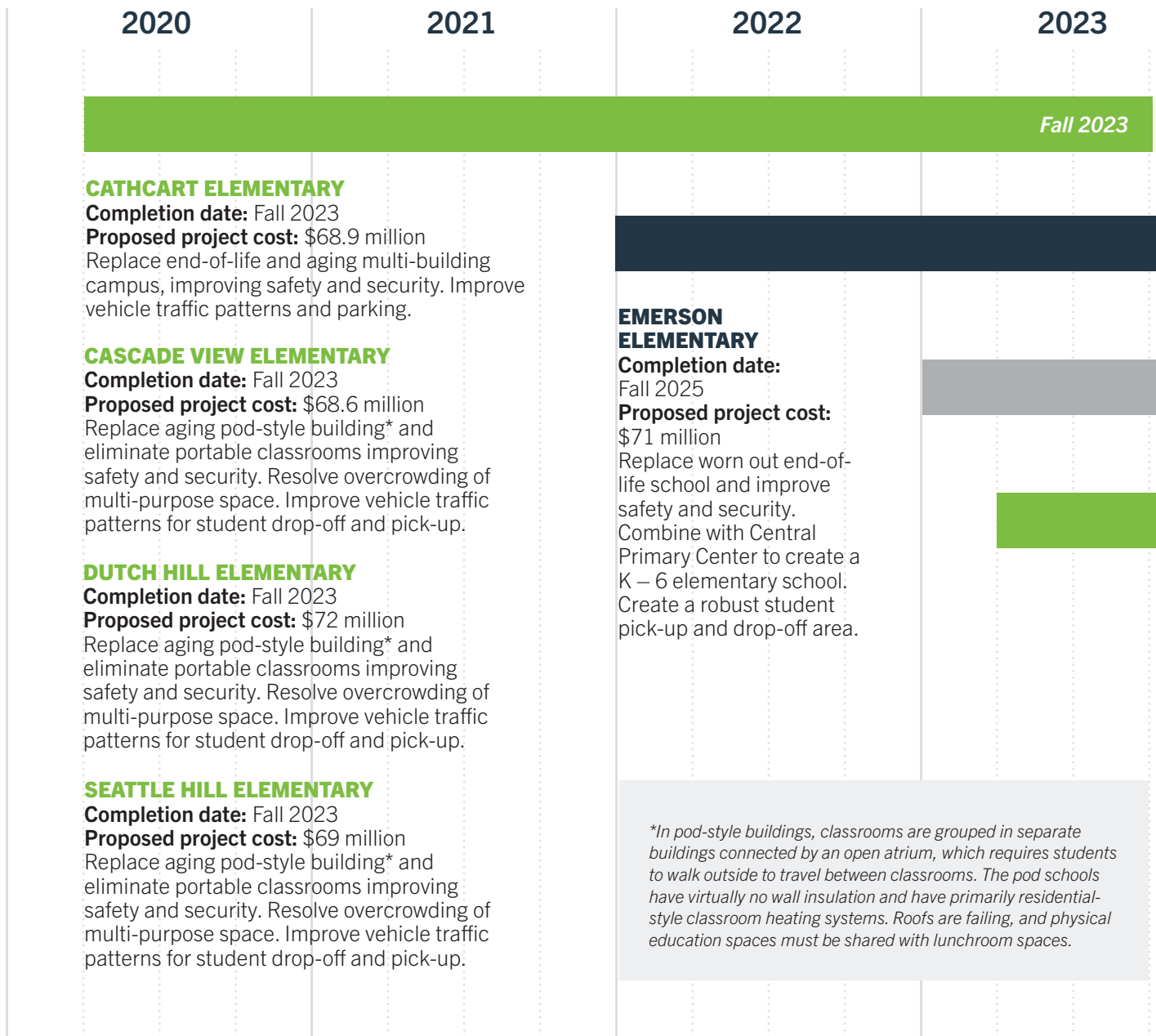
Why Do School Districts Need to Ask Voters for Local Bonds and Levies?

Bonds and levies are funding tools that allow school districts to ask the local community to directly invest in the quality of schools. Levies and bonds must both be approved by voters. On February 11, Snohomish School District will ask for a bond, which requires 60% approval.

While levies fund learning and educational programs, bonds are for building. Revenue from bonds provide funds for school construction and capital facility improvement projects. Bonds are financed over a longer period of time and are comparable to a home mortgage. By law, bond dollars may not be used to pay for the day-to-day costs of running schools.

All bond dollars approved by voters stay in Snohomish School District to improve our school buildings.

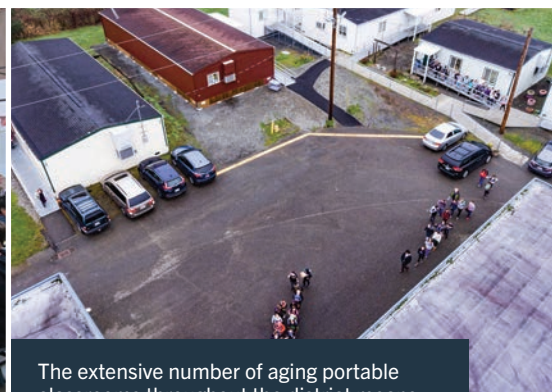
Proposed February 2020 Bond Construction Timeline



Cathcart Elementary was built in 1966, expanded in 1970 and 1980, and renovated in 1993.



Dutch Hill Elementary must share its physical education (PE) space with lunchroom space. Each day four periods of lunch are served here displacing PE classes.



The extensive number of aging portable classrooms throughout the district means students must walk outdoors and in-between buildings to receive daily instruction.

2024

2025

2026

2027

Fall 2025

AIM HIGH SCHOOL/PARKWAY CAMPUS

Completion date: Fall 2025

Proposed project cost: \$4.85 million

Renovate the campus and improve instructional spaces to meet current program needs, and replace the mechanical systems.

Fall 2025

GLACIER PEAK HIGH SCHOOL

Completion date: Fall 2025

Proposed project cost: \$10.1 million

Replace eight portable classrooms with new classrooms integrated into the existing building.

Fall 2026

TOTEM FALLS ELEMENTARY

Completion date: Fall 2026

Proposed project cost: \$77.3 million

Replace aging pod-style building* and eliminate portable classrooms improving safety and security. Resolve overcrowding of multi-purpose space. Improve vehicle traffic patterns for student drop-off and pick-up.

Fall 2026

CENTRAL PRIMARY CENTER

Completion date: Fall 2026

Proposed project cost: \$13.7 million

Update and renovate building to repurpose as a district early learning center (ECEAP and preschool programs). This facility would also serve as the home of the Parent Partnership Program providing more instructional space for this alternative learning program.

Fall 2027

MAINTENANCE, OPERATIONS AND TRANSPORTATION CENTERS

Completion date: Fall 2027

Proposed project cost: \$10.55 million

- Replace the Maintenance/Operations Center, which is housed in three portables (average age of 35-years-old), with a new facility.
- Renovate and modernize the 27-year-old district Transportation Center by replacing equipment, roof and mechanical and electrical systems.

Our Schools are Over Capacity and Students are Learning in Aging Portable Classrooms

Our schools are crowded. Snohomish School District elementary schools are **13% over capacity** and in some schools more than half the student population is learning in portable classrooms.

- Dutch Hill Elementary is **52% over capacity**
- Seattle Hill Elementary is **72% over capacity**

Our schools are aging. The average age of the seven elementary schools in this bond is **42 years of age**. Many of the schools were built to last 25-30 years.

Our students are learning in portables. Across the Snohomish School District, there are **51 portable classrooms** at the elementary and high school levels that are being used to provide instructional space and special education classes.

New schools are energy efficient and save taxpayer dollars. Most of our older schools—even though they are smaller in size—have higher utility costs per square foot. Some have higher annual bills.

Seattle Hill Elementary, Est. 1982

53,143 ft²

Yearly natural gas bill for the 2018-19 school year:

\$10,796.22



Little Cedars Elementary, Est. 2007

81,447 ft²

Yearly natural gas bill for the 2018-19 school year:

\$4,223.83



25% of Snohomish School District students in grades 4-6 are learning in portable classrooms.

To learn more, visit:

www.sno.wednet.edu/2020bond/faqs



Dutch Hill Elementary, 52% over capacity with 9 portable classrooms



Cathcart Elementary, students travel between 7 separate buildings



Seattle Hill Elementary, 72% over capacity with 12 portable classrooms

The Bond Would Also Include Enhancements to School Safety and Security for Students and Schools.



Proposed project cost: \$4 million

Projects: Upgrades to safety and security at all schools throughout our district, including:

- Digital access control systems
- New district-wide radio system
- Redesigned vestibules in secondary schools
- New and upgraded existing camera systems
- Emergency responder enhancements
- Improved school lockdown capabilities



The Ballot Language:

**PROPOSITION 1
SNOHOMISH SCHOOL DISTRICT NO. 201
BONDS TO REPLACE AND RENOVATE SCHOOLS AND IMPROVE SAFETY**

The Board of Directors of Snohomish School District No. 201 adopted Resolution No. 13-19, concerning a proposition to replace and renovate schools and improve safety. This proposition would authorize the District to: replace Cascade View, Cathcart, Dutch Hill, Seattle Hill, Totem Falls and Emerson Elementary Schools and Maintenance Center; renovate Central Primary Center, Parkway Campus and Transportation Facility; add classrooms to Glacier Peak; make District-wide safety/security and other capital improvements; acquire land; issue no more than \$470,000,000 of general obligation bonds maturing within 21 years; and levy annual excess property taxes to repay the bonds, all as provided in Resolution No. 13-19. Should this proposition be:

Approved...

Rejected.....

SAMPLE



**SNOHOMISH
SCHOOL
DISTRICT**

1601 Avenue D
Snohomish, WA 98290

Non-Profit Org.
US Postage
PAID
Permit #201
Snohomish, WA

ECRWSS
Postal Customer

Snohomish School District Has a Capital Projects Bond on the February 11 Ballot to:



Rebuild aging schools



Enhance safety
and security



Reduce the use of
portable classrooms
due to overcrowding



Ensure our schools
continue to be a source of
pride for our community

Want to Learn More About the Snohomish School District Capital Bond?

Please visit www.sno.wednet.edu/2020bond or
contact the district's Communications Department at
communications@sno.wednet.edu or 360-563-7263.

Property Tax Exemptions:

Senior and disabled citizens who meet certain
income requirements may be exempt from part
or all of local school levy taxes. To learn more, visit
www.snohomishcountywa.gov/assessor or call the
Snohomish County Assessor's Office at (425) 388-3433.

Snohomish School District Budget and School Funding

Visit www.sno.wednet.edu or contact Tom Laufmann,
Executive Director of Business Services, at
(360) 563-7239 or tom.laufmann@sno.wednet.edu.

Please Remember to Vote by Tuesday, February 11.

(No stamp needed)

The Snohomish School District does not discriminate in any programs or activities on the basis of sex, race, creed, religion, color, national origin, age, veteran or military status, sexual orientation, gender expression or identity, disability, or the use of a trained dog guide or service animal and provides equal access to the Boy Scouts and other designated youth groups. The following employees have been designated to handle questions and complaints of alleged discrimination: Civil Rights Coordinator, Title IX Coordinator and ADA – Darryl Pernet, 1601 Avenue D, Snohomish, WA 98290, 360-563-7285, darryl.pernat@sno.wednet.edu; Section 504 Coordinator and Harassment, Intimidation and Bullying – Shawn Stevenson, 1601 Avenue D, Snohomish, WA 98290, 360-563-7314, shawn.stevenson@sno.wednet.edu.