



GLENCOE HIGH SCHOOL HEALTH SCIENCES

INSTRUCTORS:

MELANIE LEWIS & ARIEL NOYES

lewism@hsd.k12.or.us

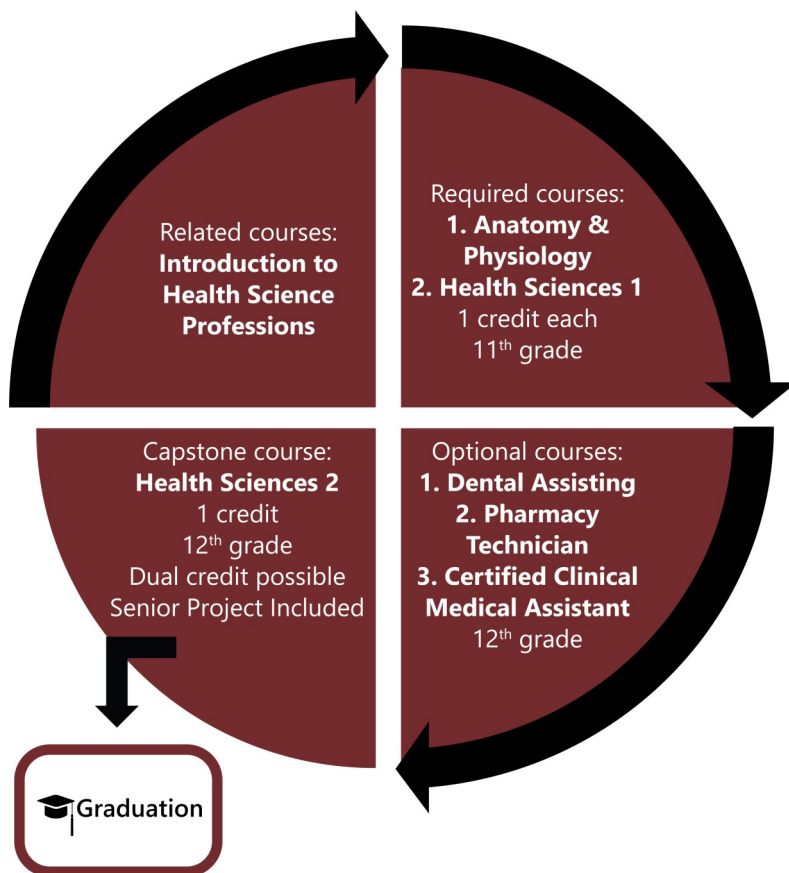
noyesa@hsd.k12.or.us

For students interested in:

- Medical Careers
- Dental Careers
- Bioscience Technology
- Veterinary medicine
- Medical research
- Sports Medicine
- Pharmacy Technician
- Certified Medical Assistant

SEQUENCE OF COURSES

Please refer to HSD course catalog for more information



PATHWAY STUDENT'S

EXPERIENCE:

- Fundamentals of human anatomy and physiology
- Professional usage of medical terminology
- Application of medical ethics
- Medical research practices and how to read professional journal articles critically
- American Heart Association & American Red Cross First Aid/CPR/AED Certifications
- Hands-on labs in a variety of medical, dental, forensic & veterinary careers
- Extended learning opportunities with community partners in a variety of healthcare settings
- A variety of health-related volunteer opportunities

CAREER POSSIBILITIES & SALARY RANGES

• Nurse	\$89,856- \$136,760
• Physician	\$135,429- \$238,472
• Physician Assistant	\$130,499- \$172,515
• Forensic Science Tech	\$63,586- \$111,342
• Athletic Trainer	\$35,506- \$85,426
• Physical Therapist	\$87,720- \$121,285
• Dental Hygienist	\$90,459- \$123,968

**Salary ranges shown are from the 10th to 90th percentile*

SOME LOCAL COLLEGES & MAJORS

- **PCC**— Associate of Applied Science: Fitness Tech, Dental Hygiene, Health Info Management, Gerontology, Radiography or Ophthalmic Medical Technology
- **OSU**— Bachelors of Science: Pre-Med, Biology or Zoology
- **PSU**— Bachelors of Science: Biology or Biomedical Physics
- **U of O**— Bachelors of Science: Biology or Human Physiology
- **SOU**— Bachelors of Science: Biology, Health & Physical Education or Nursing (offered through OHSU)
- **WOU**— Bachelors of Science: Nursing (offered through OHSU)

POTENTIAL LOCAL EMPLOYERS

- **Acumed LLC**
- **Virginia Garcia Memorial Health Center**
- **OHSU Tuality Healthcare**
- **Oregon National Primate Research Center**
- **Century Dental**
- **Providence**
- **Kaiser Permanente**
- **Genentech**
- **Metro West Ambulance**

CLUBS & PROFESSIONAL ORGANIZATIONS

- **HOSA future health professionals**

To learn more about career and college opportunities, make an appointment with your counselor 503-844-1900 ext. 3504