

ORANGE COUNTY  
BOARD OF EDUCATION

AGENDA ITEM ABSTRACT

Meeting Date: February 11, 2013

AGENDA ITEM No. 13-02-11

ACTION: (Y/N) N

SUBJECT: Crime, Violence, Suspension and Dropout Report - 2011-12

INFO. CONTACT: Dr. Denise Morton/Dr. Mary Calhoun/Alex Herring PHONE: 919-732-8126

ATTACHMENTS: 1. District Consolidated Report – Power Point

---

**PURPOSE:** To provide the Board of Education a report on the 2011-2012 consolidated data report which includes data on crime and violence incidents, suspensions and expulsions, dropout counts and rates and district demographic data.

**BACKGROUND:** North Carolina General Statute 115-C-12(27) requires the compilation of an annual report of incidents of crime and violence, suspensions and expulsions, and dropout counts for public school districts. The annual report was released by the Department of Public Instruction on January 10, 2013. The full report can be accessed at: <http://www.ncpublicschools.org/research/dropout/reports/>

**Crime and Violence Data:** The state requires school districts to report on the following reportable offenses:

- Homicide
- Assault resulting in serious bodily injury
- Assault involving the use of a weapon
- Rape
- Sexual offense
- Sexual assault
- Kidnapping
- Robbery with a dangerous weapon
- Taking indecent liberties with a minor
- Assault on school personnel
- Bomb threat
- Burning of a school building
- Possession of alcoholic beverage
- Possession of controlled substance in violation of law
- Possession of a firearm or powerful explosive
- Possession of a weapon

A review of the crime and violence data for 2011-12 showed that Orange County Schools had 42 reportable acts for a rate of 5.754 acts per 1,000 students as compared to the state rate of 7.63 acts per 1,000 students in grades K-12. This reflects a significant decline in reportable offenses. In 2010-2011, the district's rate of reportable acts was 10.656 acts per 1,000 students as compared to the state rate of 8.03 acts per 1,000 students.

**Short Term and Long Term Suspensions:** Orange County Schools continue to reduce the number of suspensions. The school district ranks 17<sup>th</sup> out of 115 school districts for the lowest short term suspension rate in

continued

grades 9-12 with 499 students being suspended for a rate of 10.77%, as compared to the state rate for short term suspensions which were 30.10%. The district ranked 29<sup>st</sup> in the state for the previous year with 575 students suspended short-term for a rate of 13.35%. Long Term suspensions for 2011-12 were 2 students compared to 18 in 2010-11. There have been no expulsions for the last 5 years.

**Dropout Data:** Orange County Schools has one of the lowest dropout rates in the region. Since 2007, Orange County Schools has reduced dropouts by 42.5%. The district's 2011-2012 dropout percentage was 2.46% while the state rate was 3.01%. A review of the 2011-2012 data shows that the number of students dropping out of Orange County Schools increased slightly from 54 dropouts for the 2010-2011 school year to 58 for the 2011-12 school year or a 7.4% increase from the previous year.

**FINANCIAL IMPACT:** None

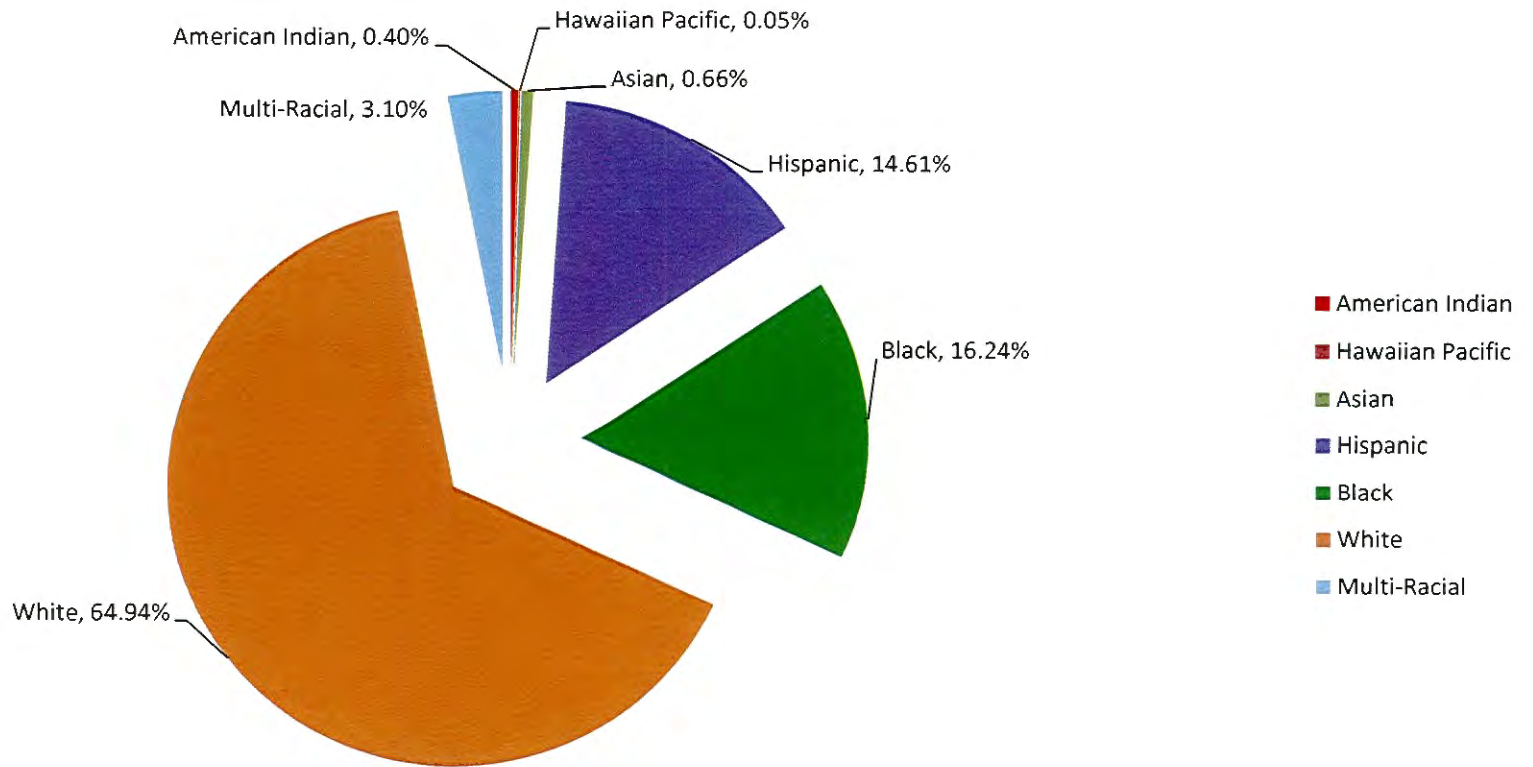
**RECOMMENDATION:** The Superintendent recommends the Board of Education receive for information the 2011-2012 Crime, Violence, Suspension and Dropout Report.

# Orange County Schools

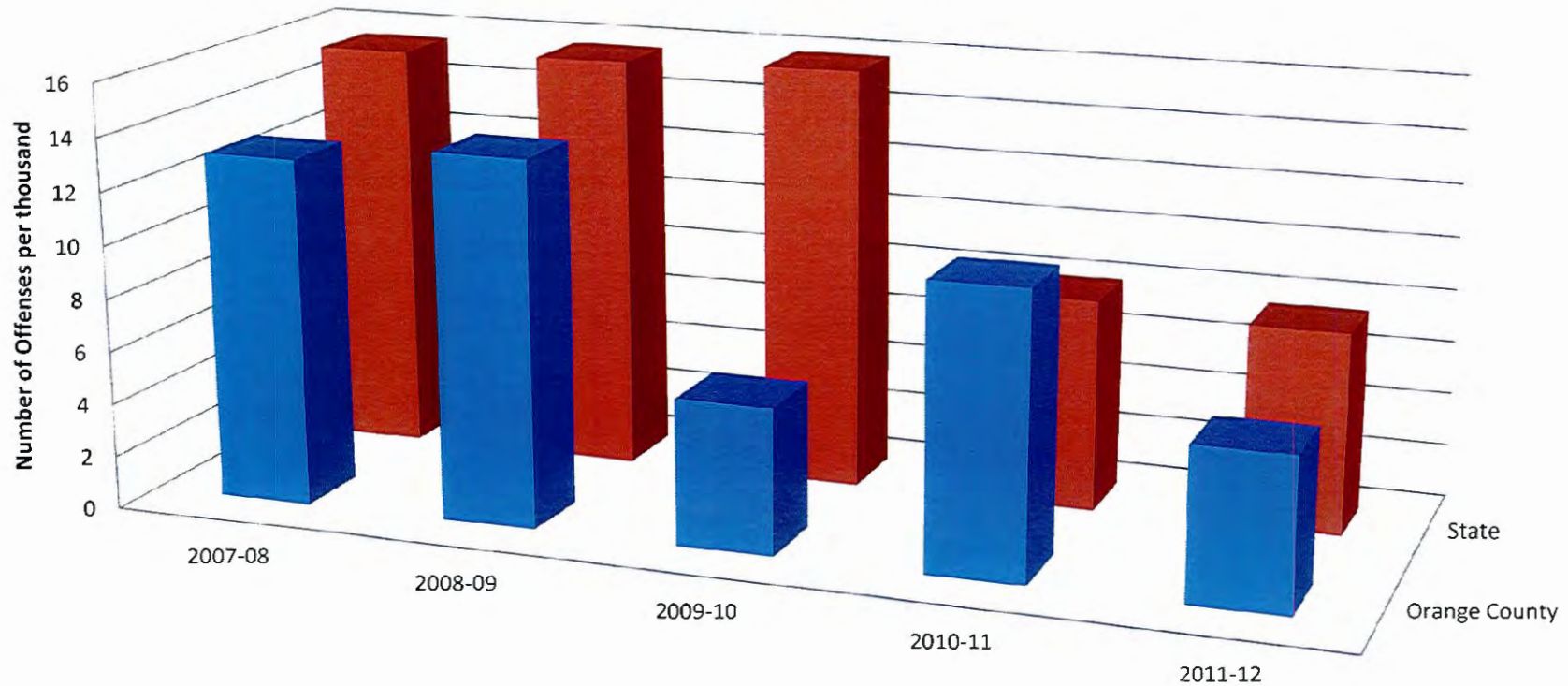
2011-12

Consolidated Report

**Orange County Schools  
District Enrollment  
June 2012  
Enrollment by Ethnicity  
2011-12**

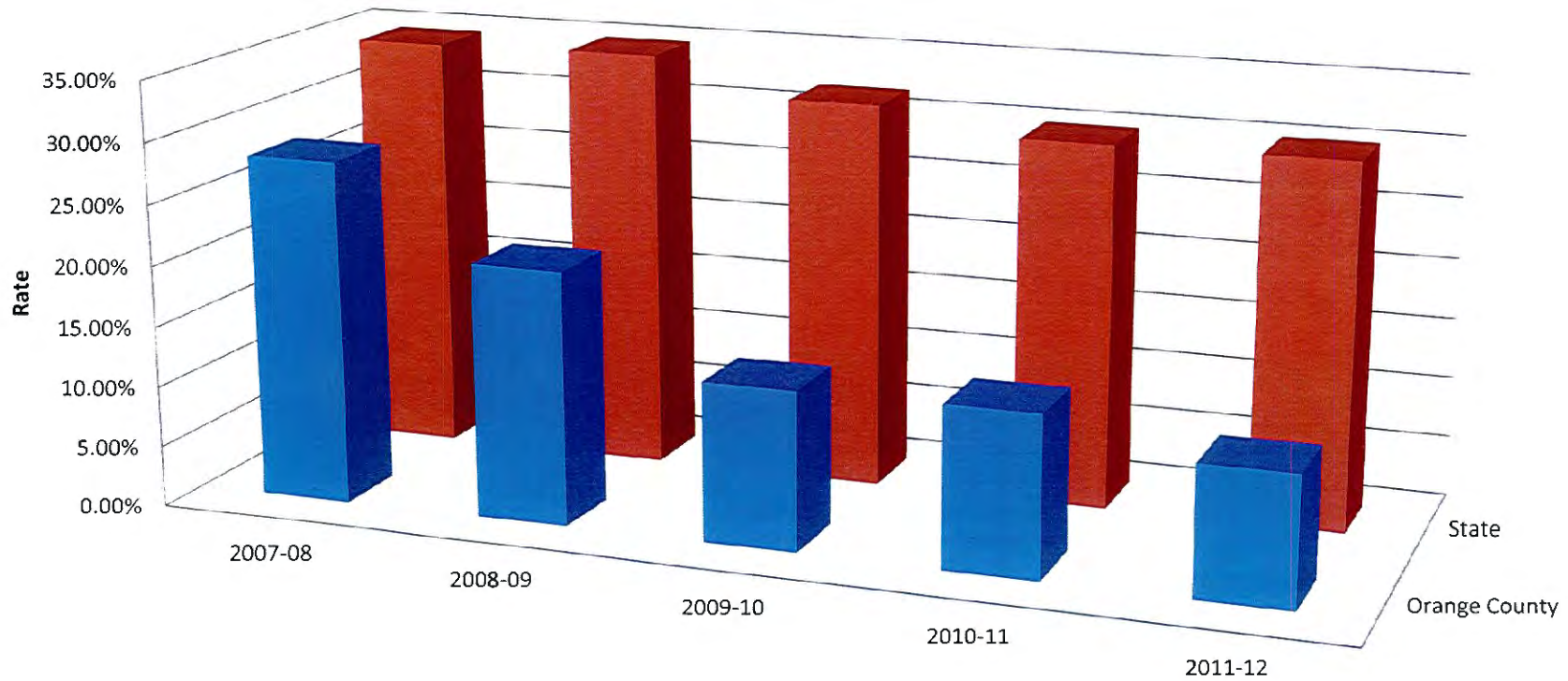


## Orange County Schools Reportable Offenses 2007-08 to 2011-12



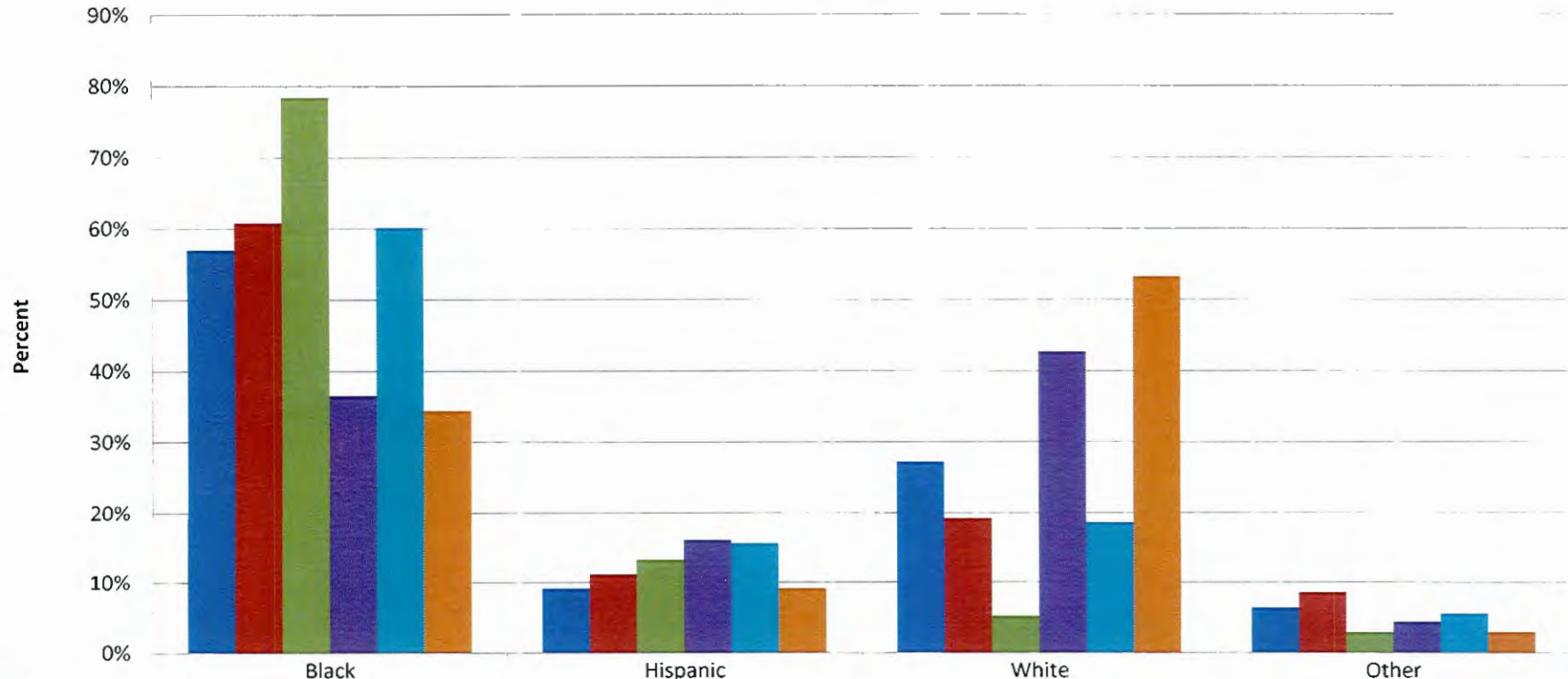
	2007-08	2008-09	2009-10	2010-11	2011-12
■ Orange County	13.12	13.77	5.54	10.656	5.754
■ State	15.57	15.70	15.89	8.03	7.63

## Orange County Schools Short Term Suspension Rates 2007-08 to 2011-12



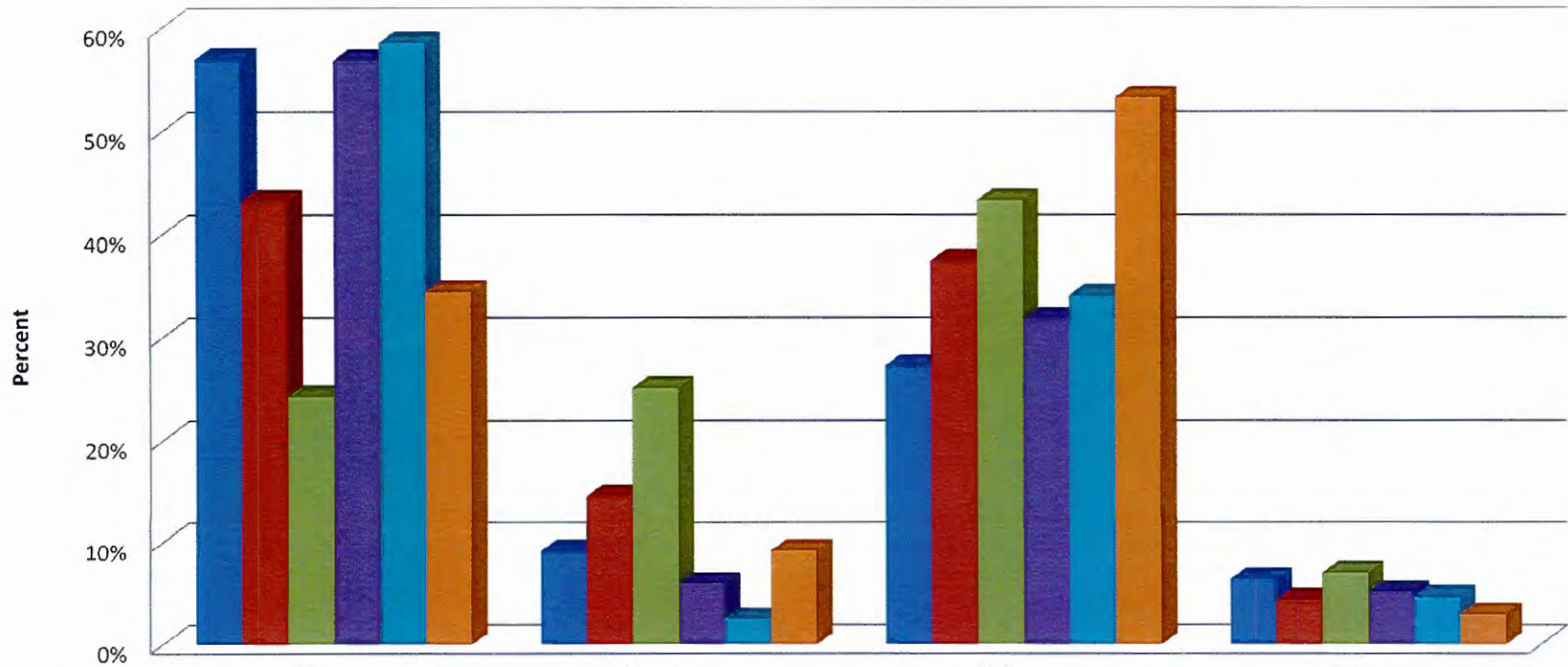
	2007-08	2008-09	2009-10	2010-11	2011-12
■ Orange County	28.30%	21.00%	13.20%	13.35%	10.77%
■ State	34.60%	34.80%	31.90%	30.00%	30.10%

## Orange County Schools 2011-12 Short Term Suspension Rates High 5 Districts



	Black	Hispanic	White	Other
State	57.07%	9.18%	27.28%	6.47%
Chapel Hill	60.89%	11.24%	19.20%	8.67%
Durham	78.43%	13.28%	5.26%	3.03%
Johnston	36.60%	16.16%	42.78%	4.46%
Wake	60.20%	15.65%	18.58%	5.57%
Orange	34.47%	9.22%	53.31%	3.00%

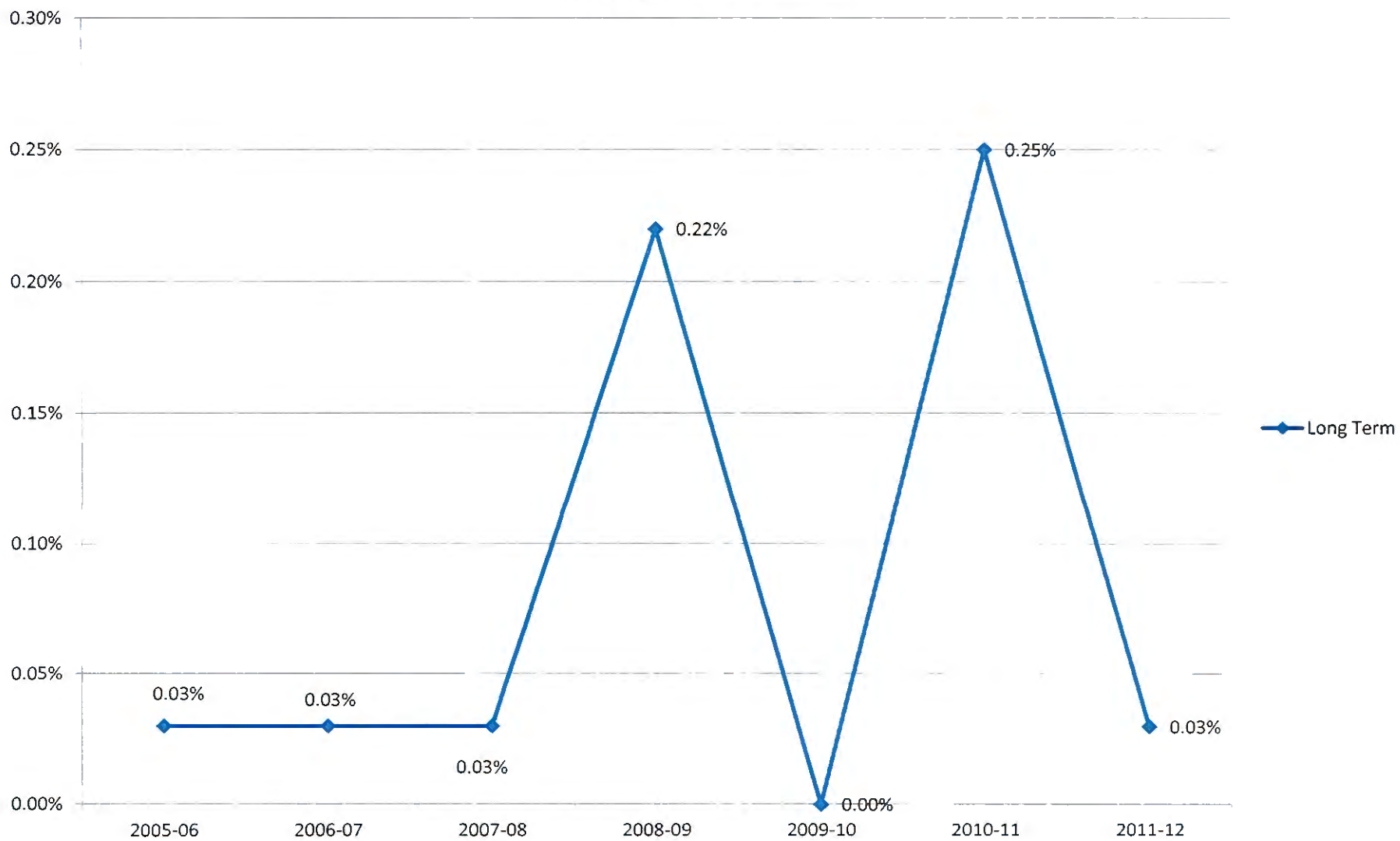
## Orange County Schools 2011-12 Short Term Suspension Rates Surrounding Districts



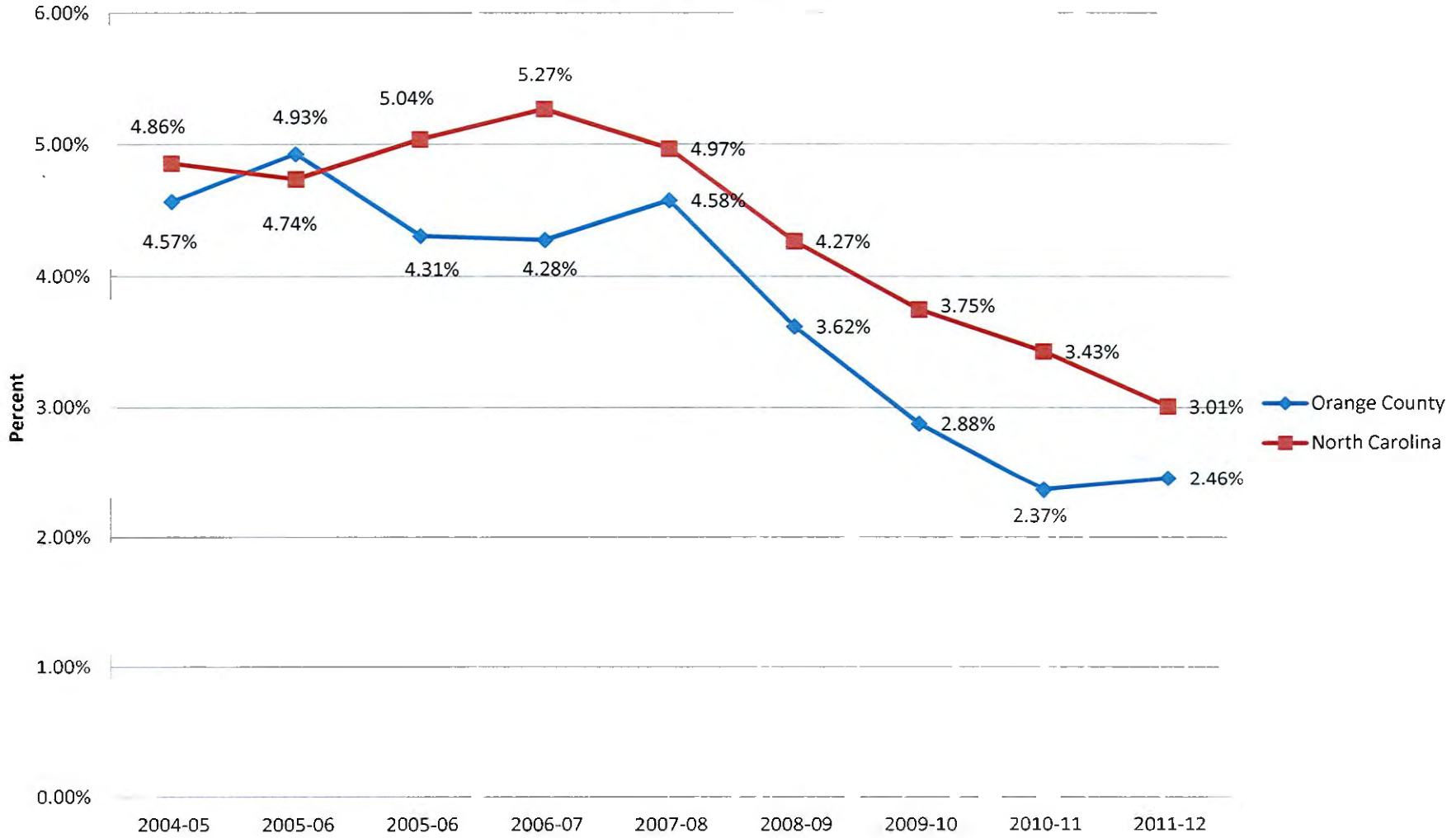
	Black	Hispanic	White	Other
State	57.07%	9.18%	27.28%	6.47%
Alamance	43.32%	14.69%	37.53%	4.46%
Chatham	24.32%	25.16%	43.40%	7.12%
Person	56.93%	6.04%	31.84%	5.19%
Caswell	58.62%	2.54%	34.12%	4.72%
Orange	34.47%	9.22%	53.31%	3.00%



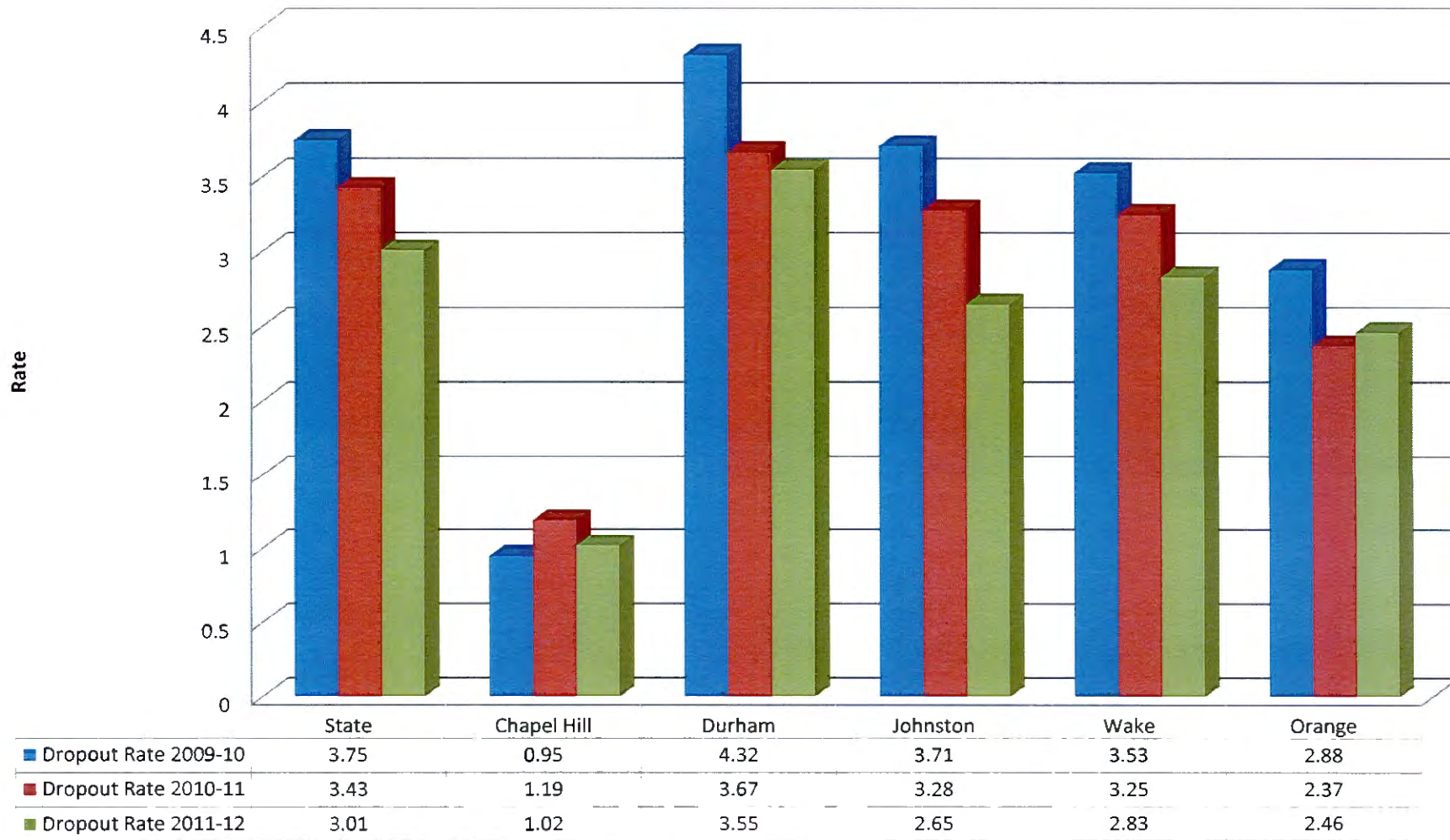
# Orange County Schools Long Term Suspension Rates 2005-06 to 2011-12



# Orange County Schools High School Drop Out Analysis 2004-05 to 2011-12



## Orange County Schools Dropout Rate Comparisons 2009-10 to 2011-12 High 5 Districts



## Orange County Schools Dropout Rate Comparisons 2009-10 to 2011-12 Surrounding Districts and State

