

The Board of Education is in closed session.

Instrucciones para Acceder los Servicios de Interpretación para esta Reunión
Instruction for how to access interpretation services for this meeting

¡Esta información ha cambiado!

Si ustedes desean escuchar la reunión
en Español por favor marque **1+720-843-2657** código
5843048



Orange County Board of Education Meeting

December 12, 2022

Dr. Monique Felder, Superintendent

ENGAGE. CHALLENGE. INSPIRE.



Mission

Our mission is to educate students in a safe, inclusive environment where we engage, challenge, and inspire them to reach their maximum potential.

Vision

Preparing every learner for lifelong service and success

Belief Statements

- Value Diversity
- Put Students First
- Excellence in All We Do
- Prioritize Equity
- Provide a Safe Environment
- Serve the Whole Child
- Inclusive Culture & Climate Starts with Us
- Accountability in All We Do
- Collaborate To Do Great Work





Welcome!

Call to Order:

- Public Charge
- Pledge of Allegiance
- Moment of Silence

Strategic Plan Outcome Goals

1

Teaching Tomorrow's Leaders

2

Excellence & Efficiency

3

Exemplary Staff

4

Empowering Culture



ENGAGE. CHALLENGE. INSPIRE.

Recognitions



200 E. King Street · Hillsborough, North Carolina 27278 · 919.732.8126 · WWW.ORANGECOUNTYFIRST.COM



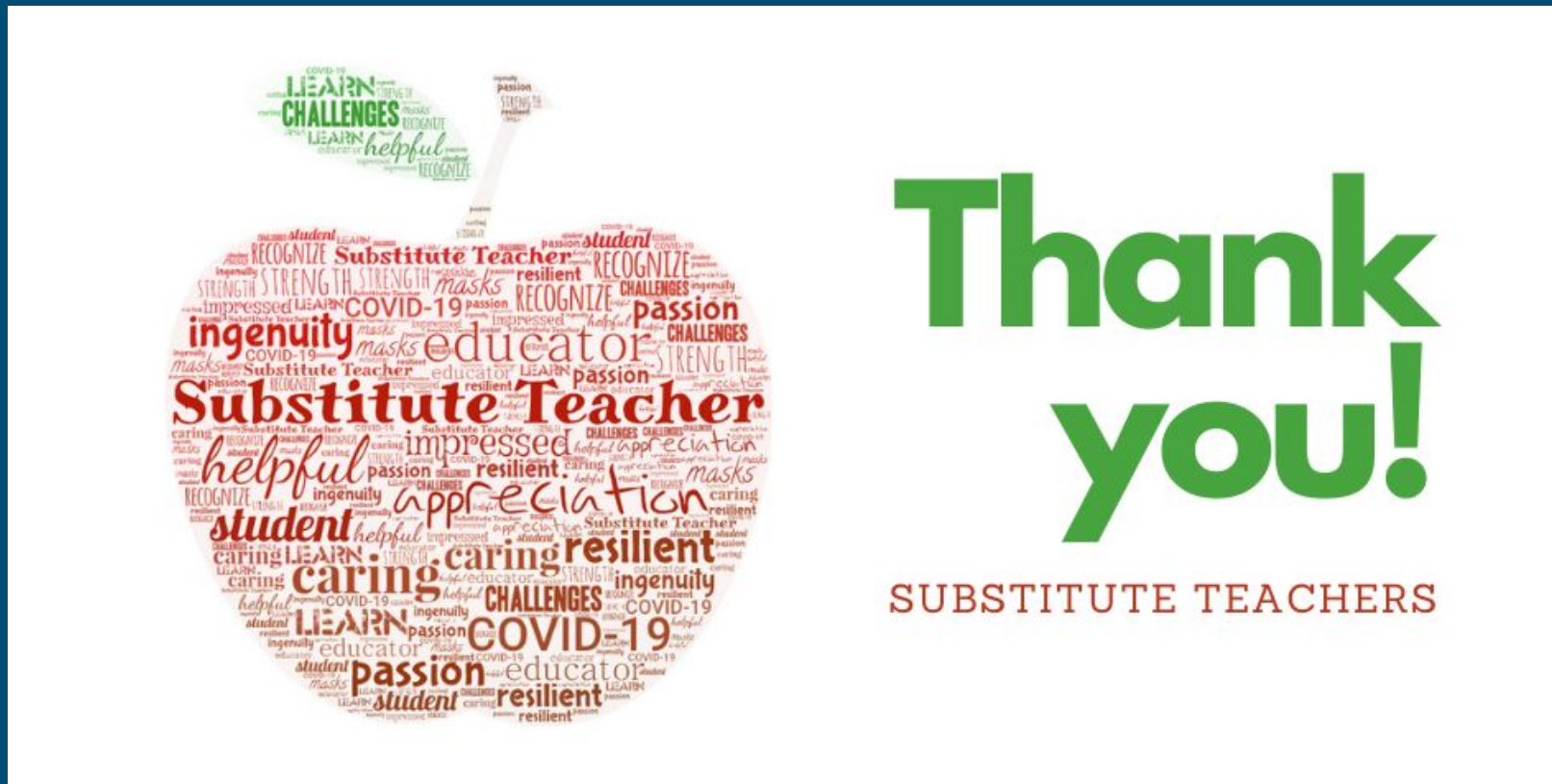
Family Engagement Month



Education Support Professionals Day



Substitute Appreciation Day



Fiona Cunningham

NCHSAA

State Volleyball Coach of the Year



ORANGE COUNTY SCHOOLS

200 E. King Street · Hillsborough, North Carolina 27278 · 919.732.8126

WWW.ORANGECOUNTYFIRST.COM



Gabriel Schmid

Cross Country

State Champion 3A

Nike Cross Nationals



ORANGE COUNTY SCHOOLS

200 E. King Street · Hillsborough, North Carolina 27278 · 919.732.8126

WWW.ORANGECOUNTYFIRST.COM



Melinda Fornes, NC CIMC of the Year



2021-2022 Growth Awards



Agenda Adoption



Agenda

V. A. Spotlight on the Future Farmers of America (FFA) Program Work Session/Information Item

V. B. Multilingual (ML) Student Support and Request for 2 EL Positions to Support ML Students Where Needed Work Session/Information Item

V. C. Town Hall Discussion from OCS Board of Education's Community Engagement Committee
Work Session/Information Item

VI. A. Review of Discretionary Transfer Options for 2023-2024 & Spot Reassignment Consideration for Efland-Cheeks Global Elementary School Discussion/Action Item

VI. B. Contract Extension for Janitorial Cleaning Services and Supplies (January - June 2023)
Discussion/Action Item

VI. C. Contract Approval for Architectural and Engineering Services with CRA Discussion/Action Item

VII. Closed Session (if necessary)

VIII. Adjournment

Public Comments



Board Comments



Consent Agenda



Consent Agenda

01 Minutes

02 Personnel Report and Recommendations

03 Request for One Additional English Language Learner (ELL) School Based Teacher Position

04 Request to Approve School Calendar Change for Adding High School Early Release on January 19, 2023 (HIGH SCHOOL ONLY)

05 Discretionary Admission Tuition Rates for 2023-2024 for Out-of-District Students

06 Bid Tabulation & Contract Approval for Efland-Cheeks Elementary Mechanical System Replacement Project Phase I

07 Bid Tabulation & Contract Approval for Water Heater Replacement at Gravelly Hill Middle School

08

Mobile Unit Lease Agreement Authorization/Approval for Efland-Cheeks Global Elementary School & Rover Park Elementary School

09

Central Elementary School Phase I Electrical Change Order #1

10

Financial Report 1st QTR FY2023

11

FY2024 Local Continuation Budget Projection

12

Burroughs Wellcome Fund Grant Request

13

Board Policy 2230: Board Committees - 2nd Reading

14

Board Policy 2220: Official Spokesperson - 1st Reading

15

Board Policy 2300: Board Meetings - 1st Reading

Work Session/ Information Items



Orange High School FFA

Our Program & National FFA Convention Trip

Shannon Braxton, Director of Cultural Arts and Career & Technical Education

Alexis Cates, OHS Ag Educator & FFA Advisor

December 12, 2022

ENGAGE. CHALLENGE. INSPIRE.





Courses Offered:
Agriscience Applications
Animal Science I & II
Ag Production I & II
Horticulture I & II
Ag Mechanics I & II
Ag Advanced Studies











Cedar Ridge High School

Agriculture Program & FFA

Shannon Braxton, Director of Cultural Arts and Career & Technical Education

Mike Scully, CRHS Ag Educator & FFA Advisor

December 12, 2022

ENGAGE. CHALLENGE. INSPIRE.





Courses Offered
School Year 2022-2023:
Horticulture I & II
Ag Mechanics I & II
Ag Advanced Studies





**Livestock FFA team from Cedar Ridge on
December 1, 2022**





Multilingual (ML) Student Support Update

Dr. Denise Greene, Chief Academic Officer

Ambra Wilson, Executive Director of Literacy

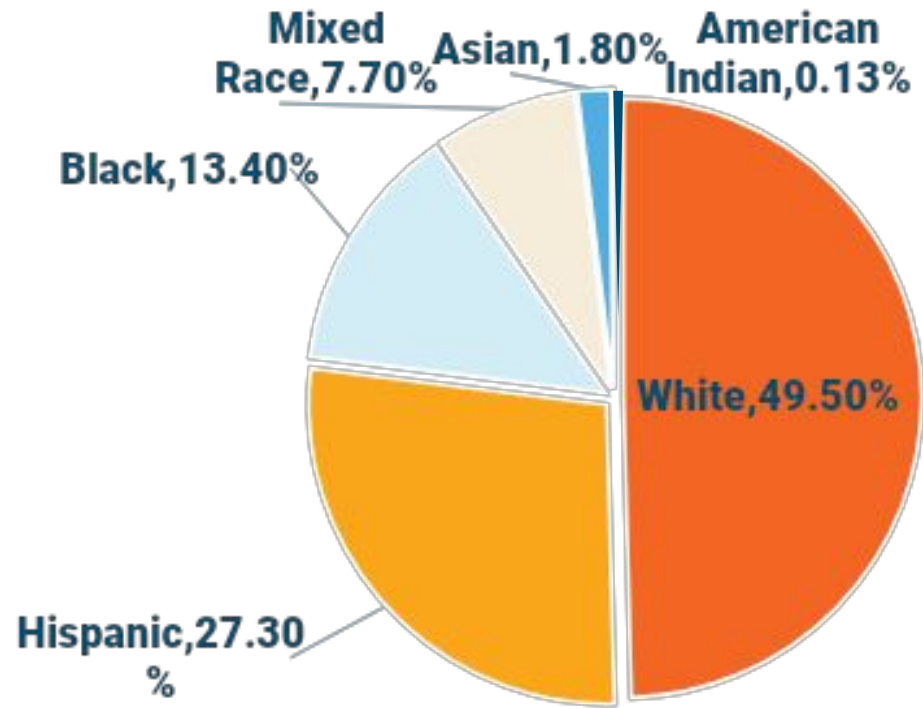
Emily Lewis, English Language Development Facilitator

ENGAGE. CHALLENGE. INSPIRE.

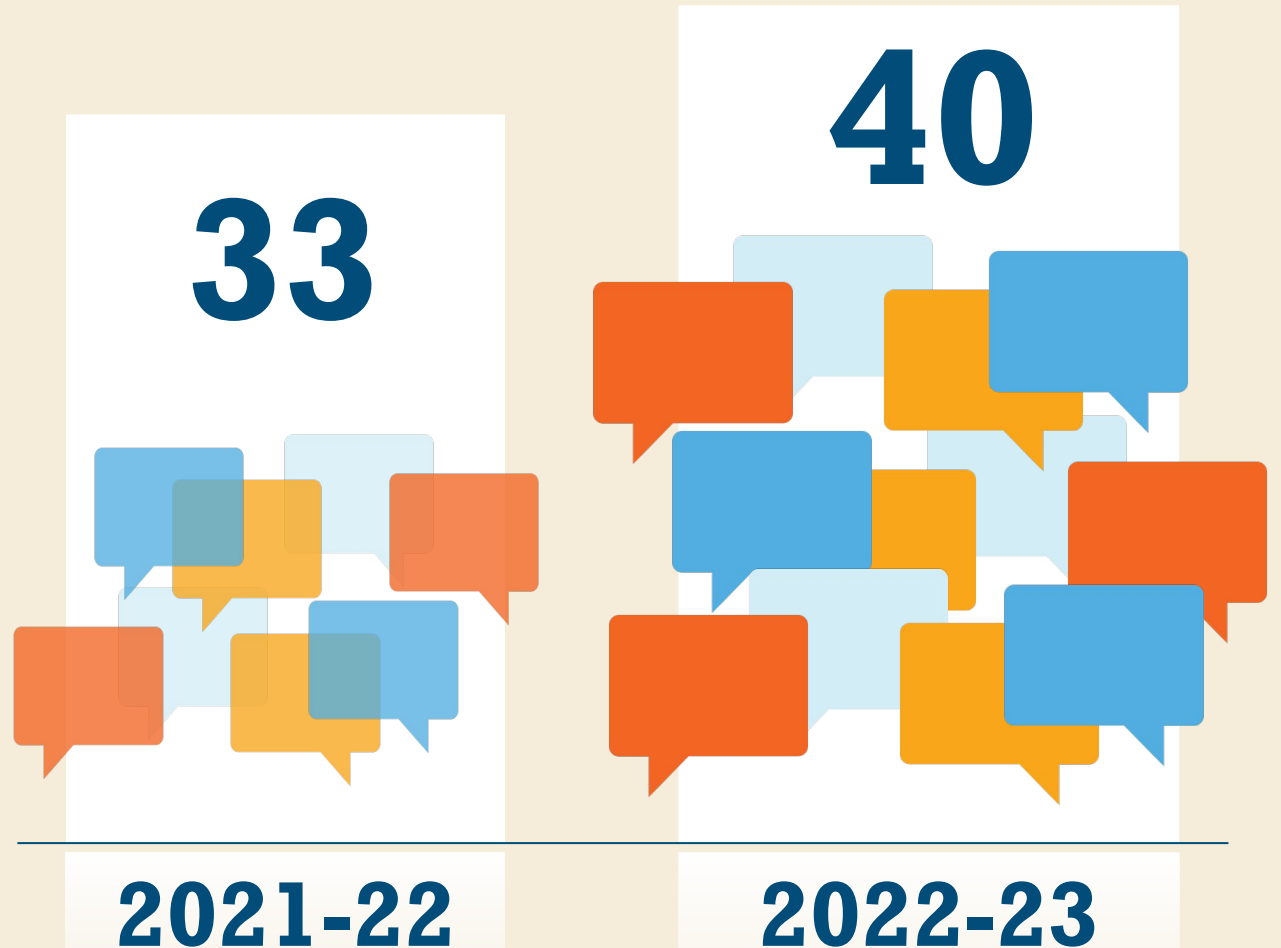


OCS Student Demographics

K-12 Race/Ethnicity 2022-23



Different languages spoken at home other than English



Newcomer Family Night

A Newcomer Family Night was hosted by English Language Development and Family Engagement staff on November 30, 2022.

- Approximately 110 Newcomer MLs currently enrolled
- Event designed to assist families with navigating U.S. Schools and supporting their student's while enrolled in OCS



Newcomer Family Night

- Topics presented include: key school personnel, how to access services for child nutrition, transportation, and academic support
 - Presented in English, Spanish, Pashto, and Ukrainian
- Students participated in bracelet making, origami, games, and a drum circle



Newcomer Numbers per School

Since August 2022, 46 newcomers have enrolled.
In all of 2021-2022, 48 newcomers enrolled.

2021-22
days of school

100% of school days

newcomers enrolled

48

2022-23
days of school

40% of school days

newcomers enrolled

46

CES	2	ALS	12
ECGE	7	GHMS	6
GAB	7	OMS	8
HES	1		
NHE	5	CRHS	27
PES	2	OHS	25
RPE	7	PA	0

ML Numbers per School (Elementary)

The number of multilingual students enrolled in OCS has increased by nearly 11% since March 2022.

School	March 2022	December 2022	School	March 2022	December 2022
CES	40	37	NHE	181	180
ECE	77	89	PES	14	16
GAB	78	77	RPE	66	73
HES	0	2			

ML Numbers per School (Middle/High)

School	March 2022	December 2022	School	March 2022	December 2022
ALS	137	136	CRHS	75	116
GHMS	41	46	OHS	68	90
OMS	34	35	PA	1	1

Questions?



Request for One Additional English Language Learner (ELL) School Based Teacher Position

- Moved from Consent Agenda to Discussion

Town Hall Discussion from Community Engagement Committee

Kevin B. Smith, Chief Public Information Officer

ENGAGE. CHALLENGE. INSPIRE.



Discussion/ Action Items



Review of Discretionary Transfer Options for 2023-2024 & Spot Reassignment Consideration for Efland-Cheeks Elementary School

Patrick Abele, Deputy Superintendent

Catherine Mau, Student Assignment & Technology Project Coordinator

ENGAGE. CHALLENGE. INSPIRE.



Student Assignment Policies



The following Board policies cover student assignment

- [Policy 4120](#): Admission to the Orange County Schools
- [Policy 4150](#): Student Assignment and Transfers
- [Regulation 4150-R&P](#): Regulations & Procedures (Choice, Transfers, Lotteries)



- **Open Schools:**
Schools without significant capacity concerns
- **Limited-Capacity Schools:**
Schools that are approaching the specified capacity limit and are presumptively closed to transfers
- **Closed Schools:**
Schools that are projected to exceed the capacity limits during the next school year.

School Buildings & Capacity



	Year Built	Square Feet	SAPFO Capacity	Membership 11/15/2022	Available Seats	Level of Service
Central Elementary	1952	52,492	428	296	132	0.69
Efland-Cheeks Elementary	1952	64,316	455	522	-67	1.15
Grady Brown Elementary	1974	74,016	490	415	75	0.85
Hillsborough Elementary	1952	51,106	420	428	-8	1.02
New Hope Elementary	1991	100,164	526	528	-2	1.00
Pathways Elementary	2000	85,282	540	309	231	0.57
River Park Elementary	1956	70,812	502	561	-59	1.12
All Elementary	54 years	498,188	3,361	3,023	338	0.90
A.L. Stanback Middle	1995	136,000	740	644	96	0.87
Gravelly Hill Middle	2006	123,600	700	430	270	0.61
Orange Middle	1968	107,620	726	524	202	0.72
All Middle	32 years	367,220	2,166	1,656	510	0.76
Cedar Ridge High	2002	256,900	1,500	1,111	389	0.74
Orange High	1962	213,509	1,399	1,342	57	0.96
Partnership Academy	2006	6,600	40	34	6	0.85
All High	32 years	477,009	2,939	2,472	467	0.84
All Schools	44 years	1,342,417	8,466	7,151	1,315	0.84

**SAPFO
Trigger is
1.05 LOS**

**SAPFO
Trigger is
1.07 LOS**

**SAPFO
Trigger is
1.10 LOS**

Student Projections



Projected, 20th day 2023 Using 3-Year Advancement Rate

	K	1	2	3	4	5	6	7	8	9	10	11	12	Proj Total	PMR1 2223	Capacity	Seats	LOS
Central ES	42	43	52	50	53	52								292	286	428	136	0.682
Efland-Cheeks ES	88	90	88	90	104	99								559	450	455	-104	1.229
Grady Brown ES	59	61	64	68	62	70								385	394	490	105	0.785
Hillsborough ES	72	73	70	69	75	65								423	420	420	-3	1.008
New Hope ES	92	95	94	83	87	91								542	493	526	-16	1.030
Pathways ES	40	41	40	48	54	54								278	304	540	262	0.514
River Park ES	96	95	89	94	90	107								572	544	502	-70	1.139
A.L. Stanback MS							221	230	208					658	633	740	82	0.889
Gravelly Hill MS							125	133	166					424	439	700	276	0.605
Orange MS							165	164	182					512	517	726	214	0.705
Cedar Ridge HS										300	276	278	228	1,083	1,018	1,500	417	0.722
Orange HS										365	375	327	289	1,356	1,337	1,399	43	0.969
Partnership HS										13	16	14	0	44	27	40	-4	1.089
TOTAL Projected 23-24	490	497	499	502	525	538	511	527	556	678	668	620	516	7,126	6,862	8,466	1,340	0.842

Choice Program Designations



On an annual basis, the Board will determine, based on recommendations from the superintendent or designee, the number of seats in each designated choice program to be filled by application. Seats are determined at the time lotteries are held in order to ensure returning students have the opportunity to remain. (Policy 4150)

- Central Elementary School: Engineering is Elementary
No capacity restrictions at this time
- Hillsborough Elementary
Kindergarten: 72 spaces
Grades 1–5: Limited depending on returning students
- Efland Cheeks Global Elementary
Closed for new Choice students due to overcrowding
- Cedar Ridge High School
IB Program only (40 spaces per grade)

School Capacity Designations



Open Schools (Anticipated capacity less than 85%):

- Central Elementary
- Hillsborough Elementary (Year-Round)
- Pathways Elementary
- Gravelly Hill Middle
- Orange Middle
- Cedar Ridge High (IB and Traditional)

Limited Capacity School (Anticipated capacity at 85–94%):

- A.L. Stanback Middle

Closed Schools (Anticipated capacity at 95% or greater):

- Grady Brown Elementary
- Efland-Cheeks Elementary
- New Hope Elementary
- River Park Elementary
- Orange High

Recommendations for 2023–24



1. Based on the Open/Limited/Closed Capacity Designations outlined on the previous slide:
 - Allow discretionary transfers for students in grades **6–12**

2. Due to state class size mandates, overcrowding at all but three district elementary schools, spot reassignment, and the comprehensive reassignment plan:
 - Close **new** discretionary transfer applications for students in grades K–5

Exceptions on the next slide

Allow Requests Under the Following Conditions



The superintendent recommends **approving** new K–5 discretionary transfer requests that meet the following conditions:

- Students requesting enrollment at Hillsborough Elementary under the choice program option.
- Students already assigned to the requested school as transfer students who are asking to remain at that school, except in buildings that are designated as being over capacity.
- Siblings (including step and foster siblings) of a student who is already enrolled and will remain enrolled at the requested school during the school year requested.
- Children of full-time employees of the Orange County Schools who are requesting reassignment to an appropriate grade-level school that is assigned to the address of the primary work site of the parent/employee, except as in #3 on the next slide.

Recommendations for 2023–24



3. Temporarily amend Board Policy 4150 to assign new elementary-aged children of staff working at Orange Middle, Orange High, Central Office, Transportation, and the Welcome Center to Pathways Elementary School.
4. The Superintendent or designee may allow additional K–12 transfer requests outside the transfer window in order to ease overcrowding at over-capacity schools or eliminate class size exceptions.
5. All transfers approved for 2023 and beyond will include notification to families that students may still be reassigned to another location pending approval of the school boundaries as defined in the student assignment plan.

Spot Reassignment for Efland-Cheeks Elementary

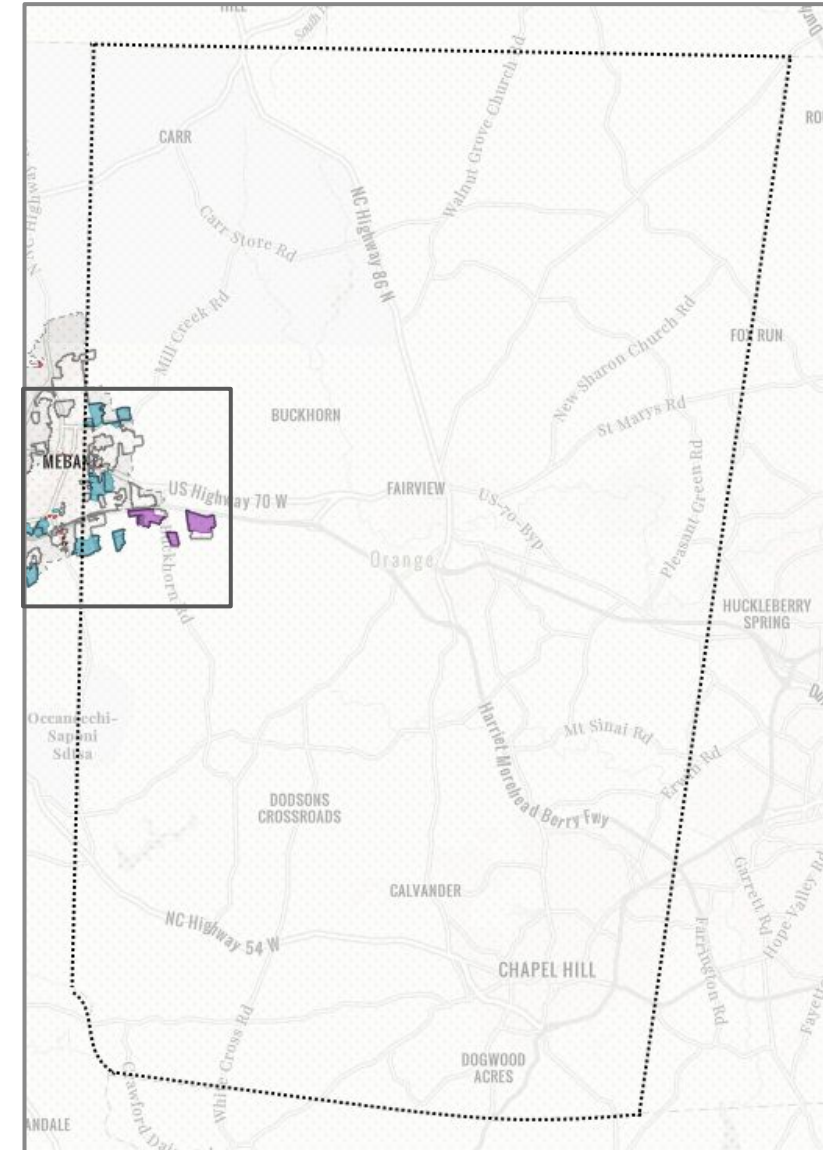
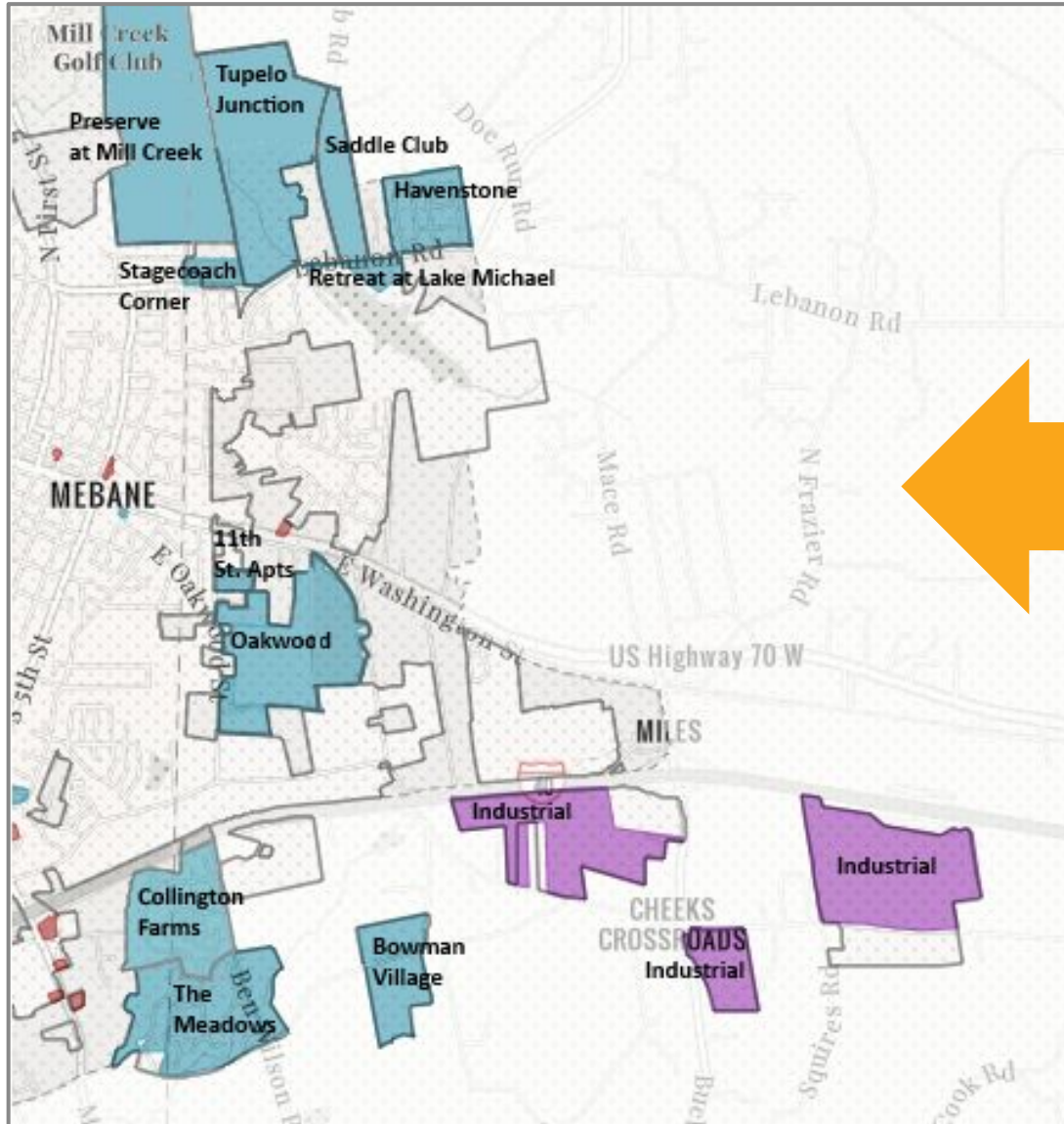


Another spot reassignment will be necessary to move students on the western edge of the district to other elementary schools out of the Efland-Cheeks assignment zone.

Planning an additional spot reassignment now would allow Transportation to have the opportunity to optimize bus routes for maximum efficiency prior to the next school year.

Ideally, neighborhoods that have been part of spot reassignment would be assigned to the same school in the reassignment plan to minimize transitions.

New Development Continues



Spot Reassignment Options: New Development

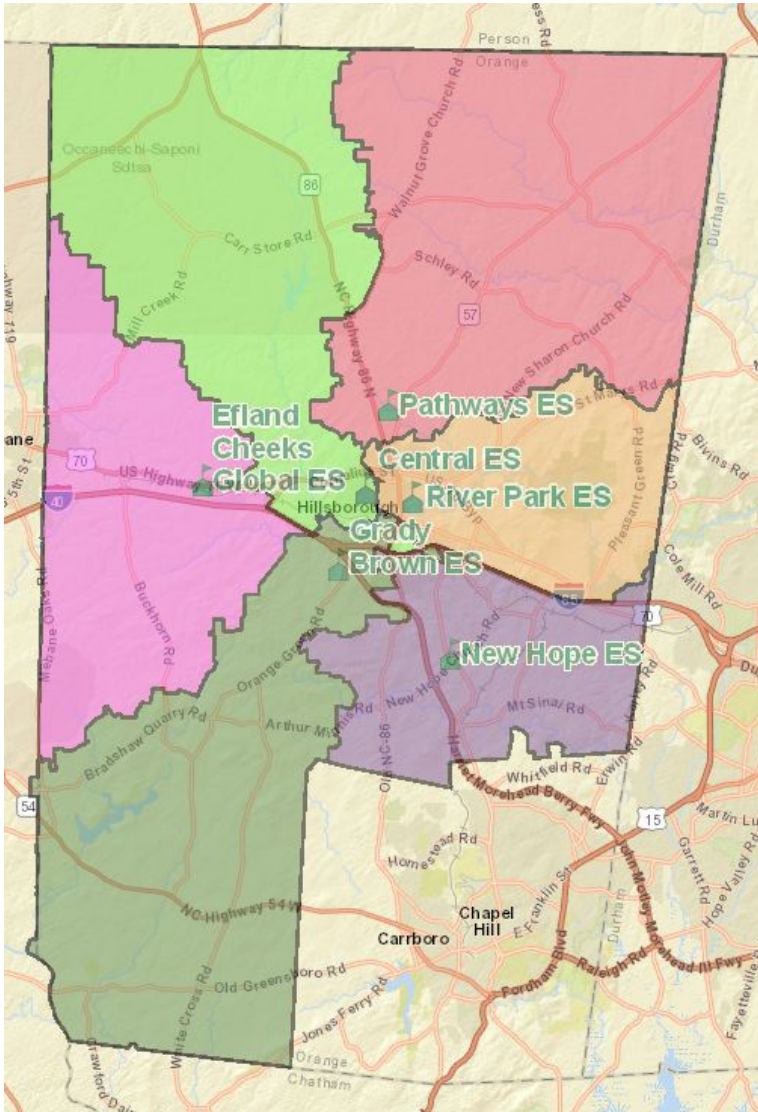


The adjacent Collington Farms and Meadows subdivisions have added 204 students to the district. 92 of the students added are in the elementary school level. In addition to the active construction, 16 more single family houses will be built in the Meadows. Nearby Bowman Village and Bowman Place are approximately 25% occupied and have so far generated 11 elementary students.

Other subdivisions are options, however they do not meet the policy requirement for new development.

Subdivision	Elementary Students
Meadows I-V	27
Bowman Village/Place	11
Collington Farms	65
Total	103

Spot Reassignment Options



Grady Brown Elementary has 75 seats available as of November 15, 2022. The school is projected to have 100 seats available in the 2023–24 school year.

The school's location and available space make it a strong option for students reassigned from Efland-Cheeks.

Questions



ENGAGE. CHALLENGE. **INSPIRE.**

Action Needed



- 1) The Superintendent recommends the Board approve the **Open/Limited/Closed Schools designations and the Discretionary Transfer & Admissions** recommendations for 2023–24 school year as described above.
- 2) The Superintendent further recommends the Board waive 2nd reading and approve **Policy 4150: School Assignment and Transfers** on first reading in order to meet notification deadlines for families starting January 1, 2023. The policy change would not impact any family with a current approved transfer and would not impact new requests for enrollment at Hillsborough Elementary School or the IB program at Cedar Ridge High School. **The requested change would impact all other NEW transfers requested after January 1, 2023.**

Contract Extension for Janitorial Cleaning Services and Supplies (January - June 2023)

Patrick Abele, Deputy Superintendent



Action Needed



The Superintendent recommends the Board approve the extension for janitorial cleaning services, as presented.

Contract Approval Architectural and Engineering Services

Patrick Abele, Deputy Superintendent

ENGAGE. CHALLENGE. INSPIRE.



Action Needed



The Superintendent recommends the Board approve the extension for architectural and engineering services, as presented.



Mobile Unit Lease Agreement Authorization/Approval for Efland-Cheeks Global Elementary School & Rover Park Elementary School

- Moved from Consent Agenda to Discussion

The Board of Education is in closed session.

Orange County Board of Education

ENGAGE. CHALLENGE. INSPIRE.



