



# SHARED DECISION MAKING

## Manhasset Schools

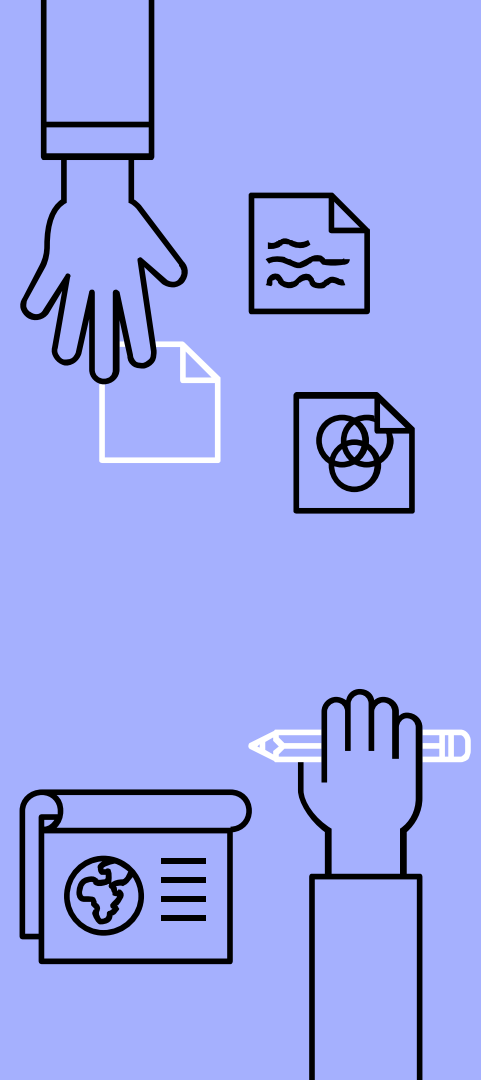


### 2023-24



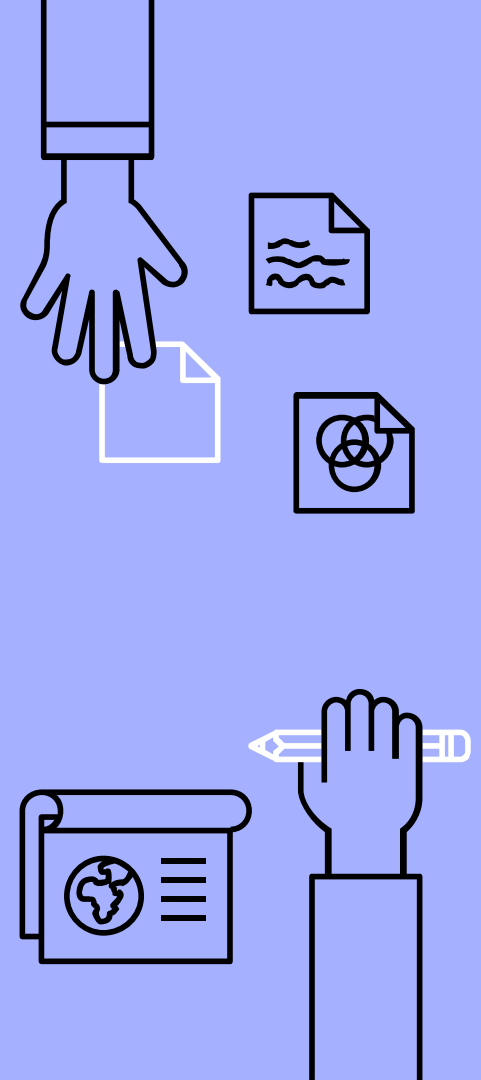
# Community relations - Parental Involvement

- ▶ Commissioner's Regulation 100.11
  - requires a district plan for the participation of parents and teachers in school-based planning and shared decision making.
- ▶ 1900E PARENTAL INVOLVEMENT
  - Shared decision-making is a process by which all stakeholders of the district collaborate in identifying problems, defining goals, formulating policy and implementing programs by consensus.



# Why Shared Decision Making

- ▶ based on the desire to continuously raise student / school performance
- ▶ to identify and implement activities to improve learning
- ▶ to foster a culture of reflection, continuous improvement, and innovation.
- ▶ designed to be flexible and is subject to ongoing evaluation and revision.



# Manhasset Public Schools 2023-24 PRIORITY AREAS

**Forge strong connections**  
to strengthen communication  
and relationships throughout our  
school community so that each  
individual feels informed, valued,  
connected, safe, and secure.



**Strengthen academic and  
extracurricular experiences**  
by cultivating academic and  
extracurricular pathways in  
which student interests and  
passions are discovered and  
explored.



EXCELLENCE  
Through  
EFFORT



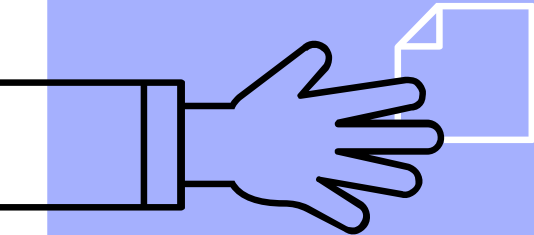
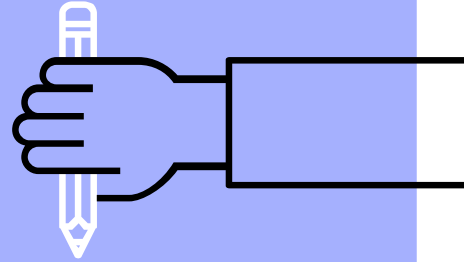
**Enhance professional practice**  
by fostering innovative learning  
practices in each of our disciplines.



**Invest in facilities**  
throughout the District to  
support the needs of our  
students, faculty, staff, and  
community members.

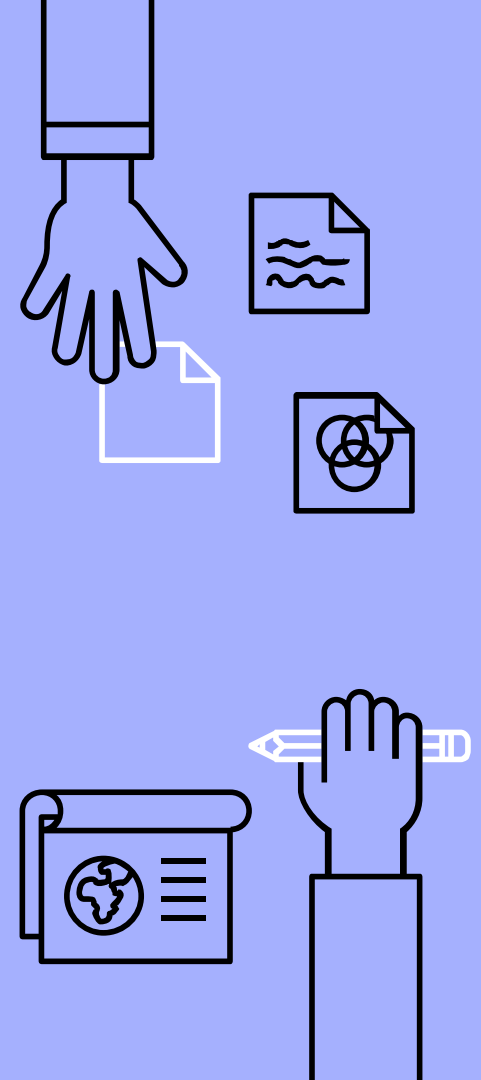


# ISSUES SUBJECT TO SHARED-DECISION MAKING

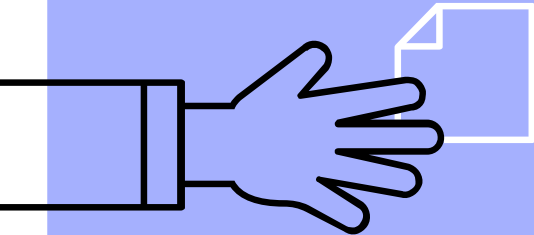
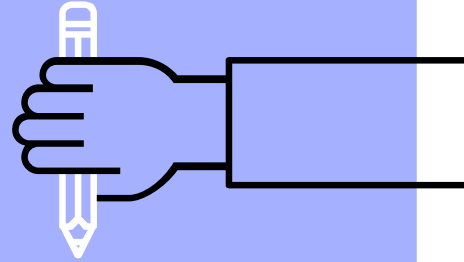


Guided by the specific needs of their student populations, building teams may address...

- ❑ Improvement of student performance
- ❑ emotional and physical well-being of students
- ❑ advancement of learning
- ❑ participation of all members of the school community

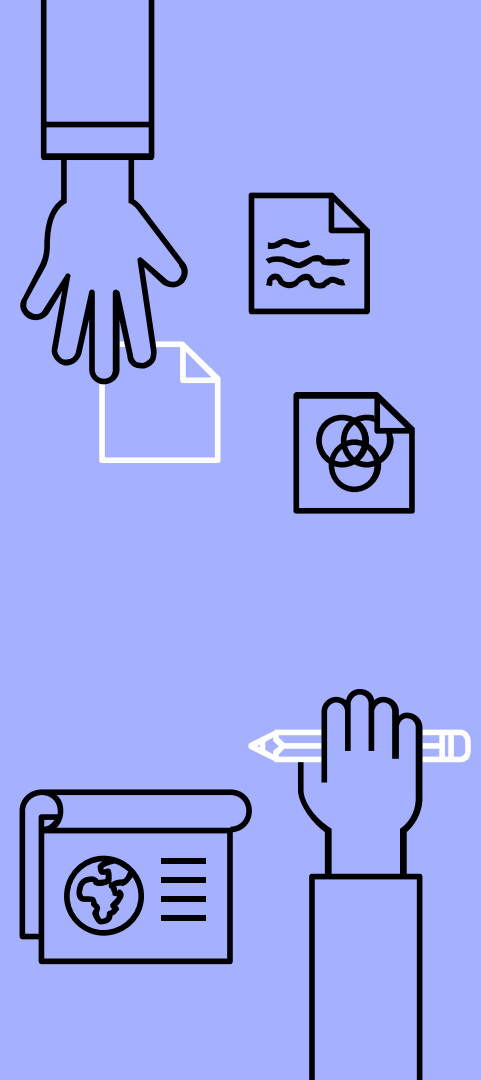


# SCOPE AND RESPONSIBILITIES OF SHARED-DECISION MAKING TEAMS



# Roles / Responsibilities

- ❑ To develop its own rules and procedures which will become part of the minutes of the first meeting of the school
- ❑ To address the educational issues cited in this plan
- ❑ To work to improve student and school performance
- ❑ To engage in communication, as appropriate, with other District committees
- ❑ To provide a comprehensive orientation for new members
- ❑ To decide what to study based on data





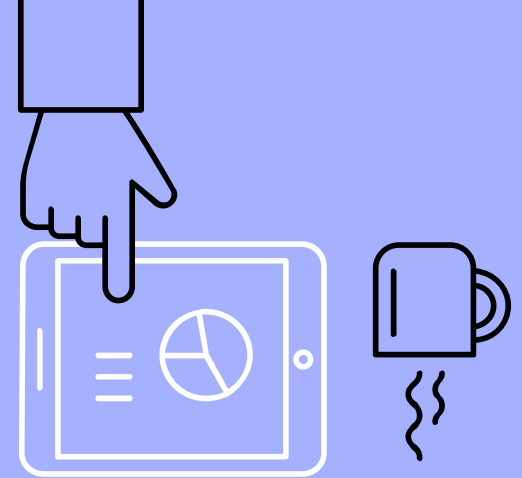
# District SDM Team

## Members

- ❑ one parent
- ❑ one teacher
- ❑ one MESPA member
- ❑ one administrator representative
- ❑ Supt. or designee

## Responsibilities

- ❑ review progress of SDM Building Teams
- ❑ resolve disagreements within or between building teams



# District SDM Team

## Members

Claudine Fini

Melissa Napolitano

Frank Russo

Sal Pergola

Joe Owens

Donald Gately

Designee

SCA

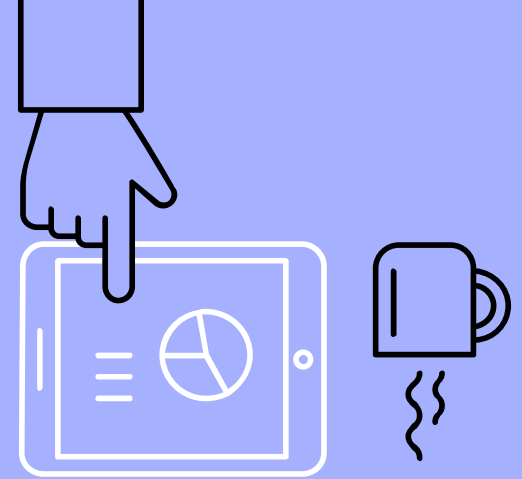
SCA

MEA

MESPA

MASA

Supt's



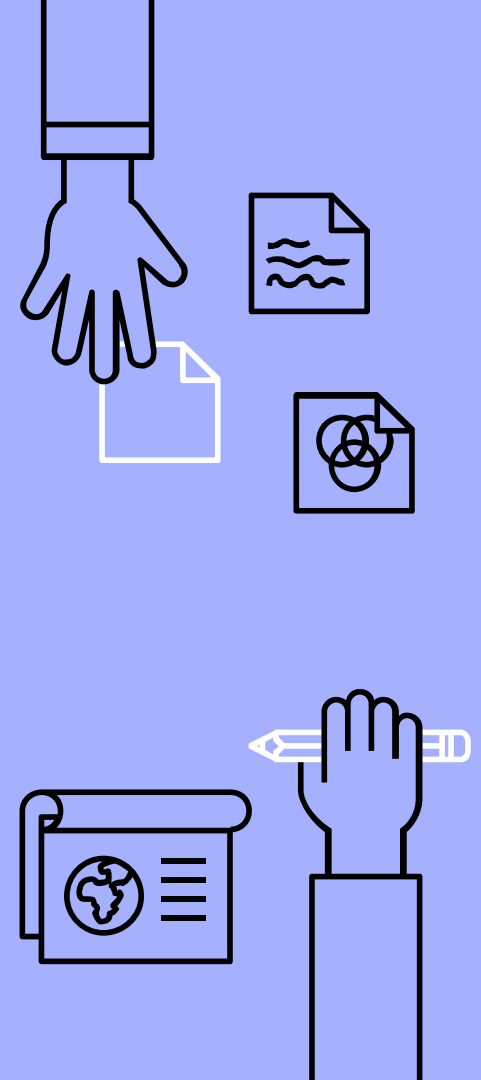
# SDM Overview

- Committee Members
- 2023/2024 Discussion Topics
- 2024/2025 - Areas of Focus



# School-level SDM Members

- ❑ Two support staff selected by MESPA
- ❑ Two parents selected by the SCA
- ❑ Two teachers selected by the MEA
- ❑ Building Principal
- ❑ One administrator selected by MASA
- ❑ Two students selected by the student government (optional at the Middle and Elementary Schools)
- ❑ Ex-Officio members



# Secondary School Committee Members

- Rich Roder - MASA
- Joseph Owens - MASA
- Rebecca Chowske - MASA
- Paulette Williams
- Claudine Fini - Parent
- Tanja Milewski - Parent
- Sal Pergola - MESPA
- Michelle Fazzolari- MEA
- Natalya Panullo - MEA
- JP Grassano - Student
- Victoria Gipp - Student



## Secondary School Focus

- ❑ Student transition experience from Elementary to Middle School (6th to 7th grade)



## Lunch on the Lawn

- ❑ Revisited goals of experience
- ❑ Reorganized content shared with students
- ❑ Munsey Park and Shelter Rock visited the Middle School on the same day at different times
- ❑ Smaller student tour group sizes
- ❑ Students wore nametags
- ❑ Added a staff member and two student NJHS members to each tour group



# Marie Rogers Friday Night Live

- ❑ Reinstated team-building activities in gymnasium with Munsey Park and Shelter Rock students
- ❑ Adding student representatives to each classroom to engage with Munsey Park and Shelter Rock students (pilot-may lead to a student panel next school year).





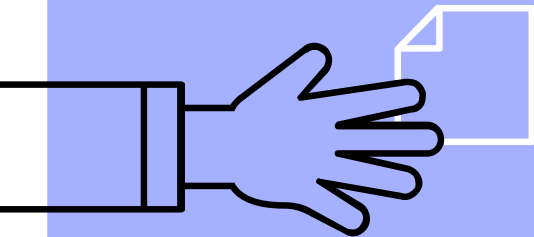
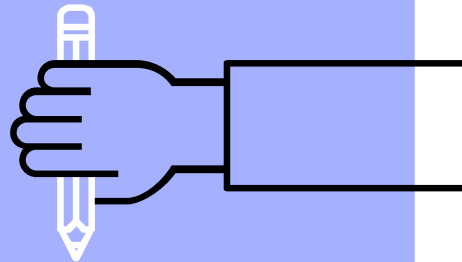
# New! Student Club Fairs

- 8th to 9th grade (May 2024)
- 7th Grade Only (September 2024)
- Over twenty clubs represented
- Special thanks to Kate Collard, JP Grassano, and our Student Senate



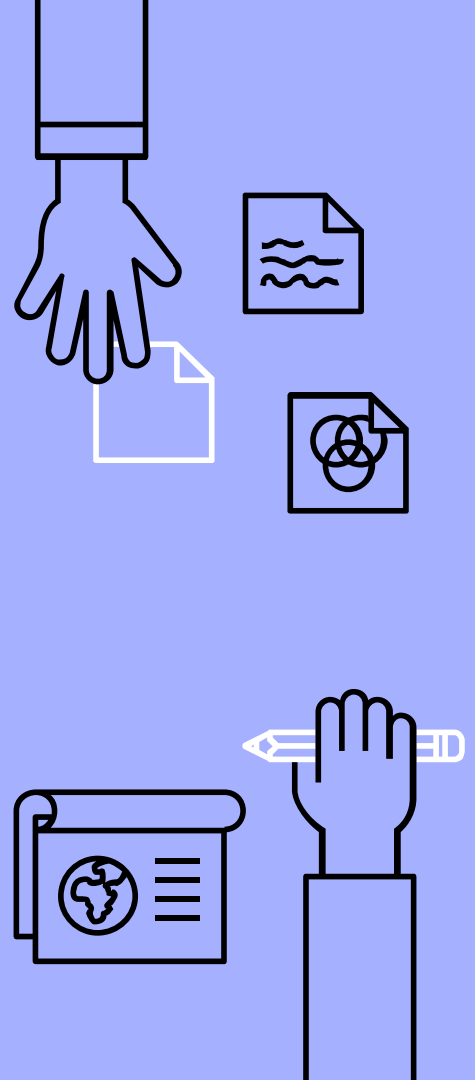
## 2024-2025 Topics to Consider

- Continue building on student transitions from 6th to 7th grade
- Assess/enhance current student transition practices for 8th to 9th grade
- Cell phone policy (7-12)



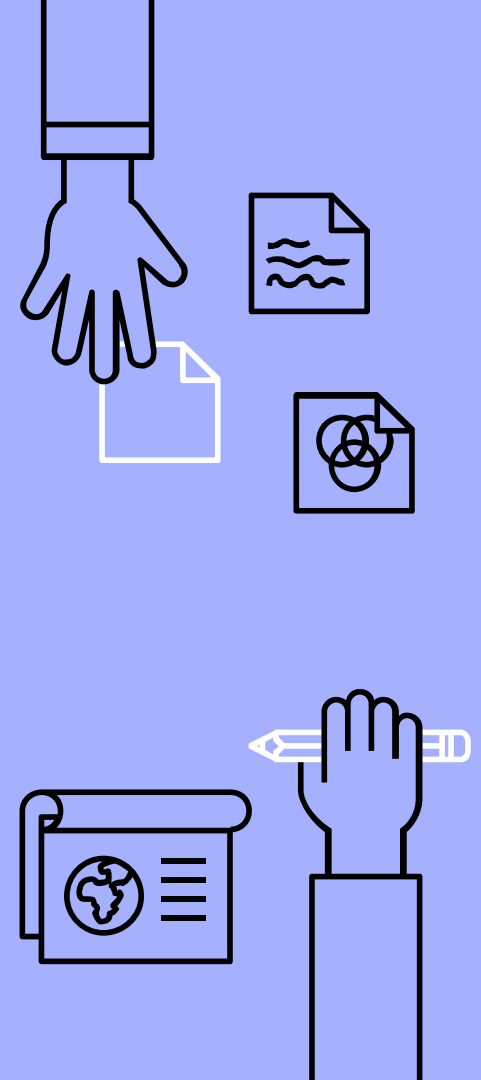
# Munsey Park Members

- ❑ Reba Ruthenberg: MESPA
- ❑ Ted Lyu and Jackie Renton: SCA
- ❑ Danielle Mora, Debra Costello, Samantha Goldberg: MEA
- ❑ Chad Altman, Brian Nolan: MASA



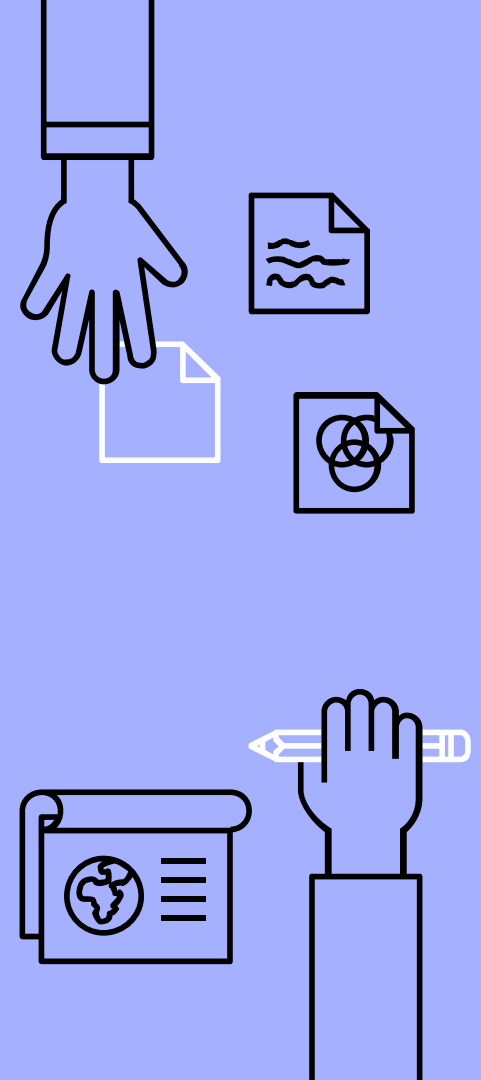
# 2023/2024 MP Discussion Topics

- ❑ Class size guidelines
- ❑ Student leadership opportunities
- ❑ Buddy System for new students  
(Grades 1-6)
  - ❑ Support from students for our ice cream social
  - ❑ Connections with new families



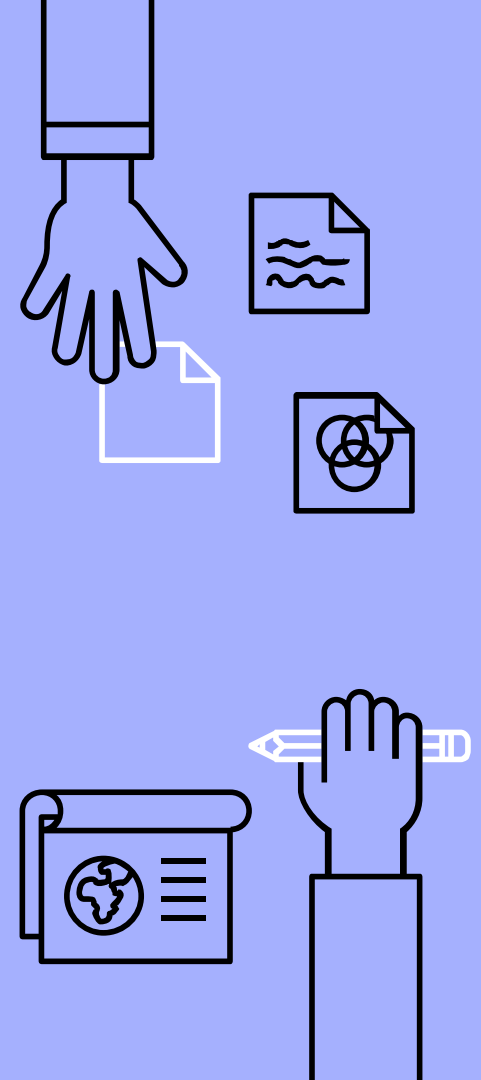
# MP Areas of Focus - 2024/2025

- ❑ Continued efforts to promote student voice.
- ❑ Highlighting examples of student leadership to further inspire our teachers to integrate additional opportunities for students to take on leadership opportunities, such as public speaking opportunities



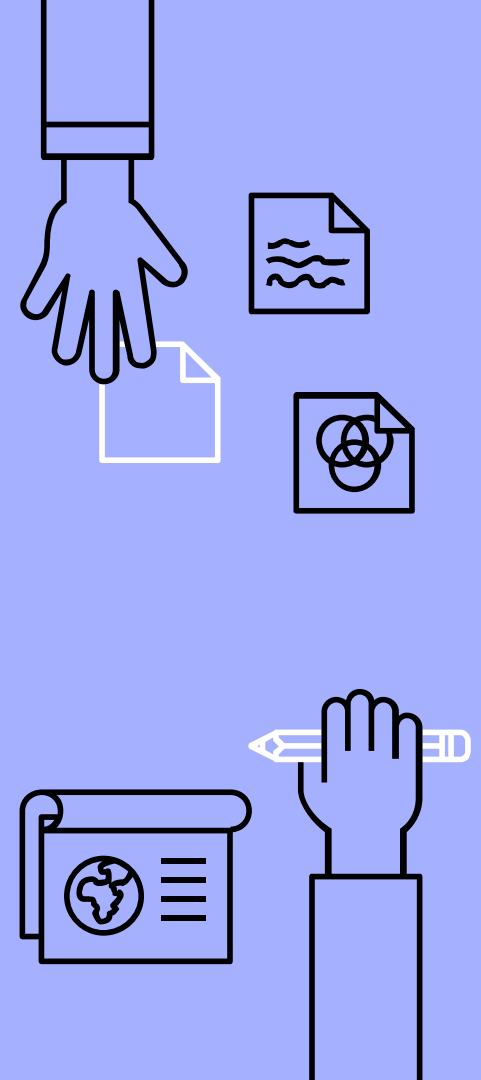
# Shelter Rock Members

- ❑ Santina Nikolaidis: MESPA
- ❑ Rada Giordano and Lily Chan: SCA
- ❑ Dina Merolesi and Allyson Weiss-Begley: MEA
- ❑ Deana Folchetti-Puglin: MASA
- ❑ Jessica Zimmer: Principal



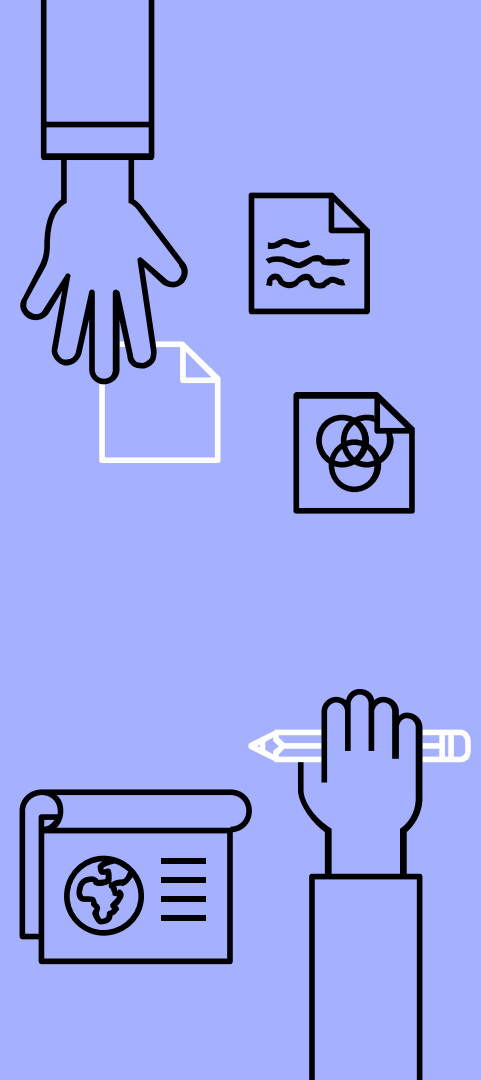
# SR Discussion Topics 2023/2024

- ❑ Student Recess Experience
- ❑ Family Engagement - Volunteer Opportunities
- ❑ Foundation/Data Collection for PBIS school wide focus



# 2024/2025 -SR Areas of Focus

- ❑ Student Recess Experience
  - ❑ Pilot and reflect upon our ideas
  - ❑ Collect/organize resources
- ❑ School Environment
  - ❑ Explore a schoolwide program for supporting positive behavior, leadership and student voice
  - ❑ Grow and improve our Community Gatherings





Thank you!!

