

The Chester School District
Public Hearing
2021-2022 Proposed School Budget
April 28, 2021



Chester School District

Committed to maintaining standards of **Excellence in Education** while improving and maintaining the schools technological and physical Infrastructures for a **21 Century Educational Experience**


#WeAreChesterNJ

School Budget

- Reflects the district's educational priorities and goals
- Balance between competing priorities (all worthy) as they represent the interests of students and the taxpayers of the district
- Provides guidance throughout the year
- Satisfies all state mandates
- Requires Department of Education Approval

Chester School District Points of Pride

Future Ready Chester Elementary School, King Elementary School, and Black Star Middle School are all Future Ready schools and prepare students for the future of the world.	Sustainability Our students are continuously focused on creating and maintaining environmentally friendly learning spaces. The Chester School District is Sustainable.	Growth Teachers continue to professional learning communities and are committed to enhancing their effectiveness in the classroom.	STEM All students are involved in STEM courses that promote hands-on learning. Chester is home to the largest science facility in the west.	Music Music is an integral part of the district's curriculum. The Chester Music program is a part of the district's 3-5-9.	Clubs Over 50 clubs are offered throughout the district. Students are encouraged to participate in a variety of clubs, including Chess, Art, and more.	Athletics The district has over 100 varsity sports teams. Students are encouraged to participate in a variety of sports, including Football, Basketball, and more.	Languages Chester offers a variety of language courses, including Spanish, French, and more. Students are encouraged to learn a second language.	Technology Over 100 computers are available to students. The district is committed to providing students with the latest technology.
---	--	--	---	--	--	--	--	--



CHESTER SCHOOL DISTRICT
EXCELLENCE IN EDUCATION

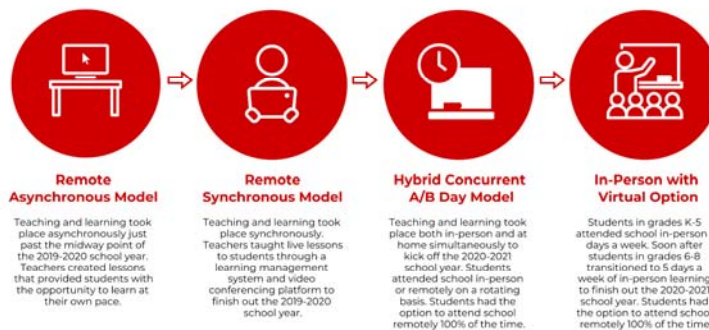
Literacy Teachers throughout the district are supported by a variety of literacy programs. Students are encouraged to read and write.	Math Teachers throughout the district are supported by a variety of math programs. Students are encouraged to learn and apply math.	Security Our district is committed to providing a safe and secure learning environment for all students.	Drama Students are encouraged to participate in drama programs. The district offers a variety of drama classes.	Achievement The district is committed to providing a high-quality education for all students. Students are encouraged to achieve.	Staff The district is committed to providing a high-quality education for all students. Teachers are encouraged to excel.	Recognition The district is committed to providing a high-quality education for all students. Students are encouraged to be recognized.	Community The district is committed to providing a high-quality education for all students. Students are encouraged to be part of the community.	Whole Child The district is committed to providing a high-quality education for all students. Students are encouraged to be whole.
---	---	--	---	---	---	---	--	--

District's Points of Pride

- Biggest point of pride for this current school year is that we were able to provide a sound education for all students that included both virtual and in-person instruction during a pandemic.
- Additionally, our staff came to school each day and implemented innovative teaching methods and technologies to meet the needs of all learners at the same time (what is called concurrent teaching). Concurrent teaching is the most difficult type of teaching to pull off due to a teacher having to teach both in-person and remote students at the same time.
- Our technology department, instructional coaches, and administration did an outstanding job of supporting teachers in any way possible to ensure that the needs of all learners were met during the pandemic.
- Our maintenance and custodial staff along with our school nurses worked tirelessly to ensure that all students and staff were able to attend school in an environment that is safe, clean, and set up in a way that provides students with an opportunity to learn in-person during a pandemic.

5

Pandemic Teaching and Learning Models



www.chester-nj.org



#WeAreChesterNJ

6

Dickerson School

- Chester Academic Assistance Program in Reading and Math
- Guided Math Instruction for all students
- Balanced Approach to Reading with Houghton Mifflin Reading Inventory Individualized Assessments
- Student Clubs



Bragg School

- Language Arts teachers participated in a 5-month Writing Conferences PD with Carl Anderson
- Continued virtual assembly events for scholars
- Continued Annual Schoolwide programs such as Week of Respect, Red Ribbon Week, Read Across America and A Nation of Diverse Readers Spirit Week

7

Black River Middle School

- Received 4th consecutive National Schools TO Watch recognition 2020-23
- Teachers who are nationally known authors and speakers
- 2020 AMLE Educator of the year – Mr. Pizzo
- Special Olympics Unified Sports Program
- Clubs, teams and virtual experiences during Covid Hybrid schedule
- Offers Spanish, French and Mandarin Chinese Language classes



8

District Points of Pride - Technology

- Interactive Whiteboards in every classroom, desktops (including iPads and over 850 chromebooks) and 80 new document cameras in the district
- 1:1 Chrome Books from 2nd to 8th grade. 1st grade will be 1:1 in the 2021-22 school year
- All Student progress reports and report cards available to parents on line via PowerSchool
- New online student enrollment process
- Shared services agreement with Mine Hill BOE
- New repair center at BRMS for the 2021-22 school year
- All district technicians Lenovo certified for a District Self Maintainer Program



9

Technology (continued)

- All students using G-Mail accounts, Google Docs and Google Drive and Google Classroom
- Technology Clubs and Coaches at all three schools
- Asynchronous professional development for technology applications during the summer of 2020
- New software implemented yearly (G Suite Enterprise, Peardeck, Screencastify, Docusign, etc.)
- Classroom technology allowing for a hybrid model of synchronous learning during the 2020-2021 school year



10

Facility Improvements & Equipment for 2021-2022



- Partial Ceiling Replacement at BRMS
- Partial Ceiling Replacement of insulation at Bragg
- Water Fountain Replacement at BRMS & Bragg
- Floor Replacement at Dickerson near Gym



11

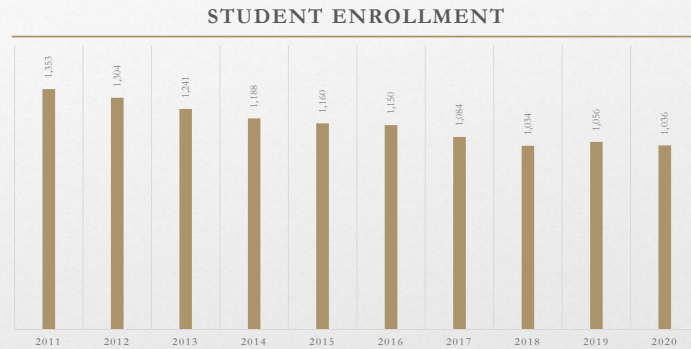
Per Pupil Cost for the Region

As per NJDOE's NJ Taxpayers Guide to Education Spending for 2020

	Actual FY19	Budgeted FY20
Mendham Borough	\$17,150	\$19,531
Mendham Township	\$20,725	\$22,101
Chester	\$17,102	\$18,852
Washington Township	\$19,043	\$19,382

12

Enrollment By School Year



*Projected Enrollment for 2021: 1,040

13

Tax Levy Increases

School Year	Tax Levy Amount	Dollar Increase	% Inc.
2011-12	\$ 18,951,972	\$ 289,403	1.55%
2012-13	\$ 18,951,972	\$ -	0.00%
2013-14	\$ 19,255,764	\$ 303,792	1.60%
2014-15	\$ 19,609,553	\$ 353,789	1.84%
2015-16	\$ 19,781,205	\$ 171,652	0.88%
2016-17	\$ 20,083,256	\$ 302,051	1.53%
2017-18	\$ 20,284,089	\$ 200,833	1.00%
2018-19	\$ 20,385,509	\$ 101,420	0.50%
2019-20	\$ 20,650,521	\$ 265,012	1.30%
2020-21	\$ 20,857,026	\$ 206,505	1.00%
*2021-22	\$ 21,263,738	\$ 406,712	1.95%

*Proposed Tax Levy

14

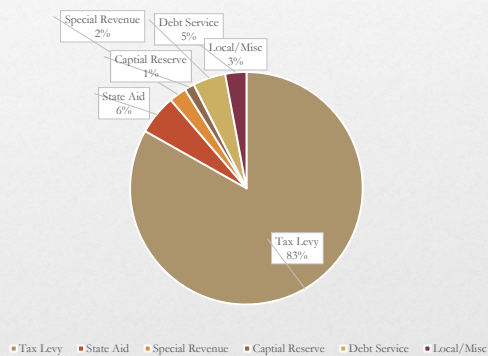
Tax Impact

1.95% Tax Levy Increase

	<u>2020-21</u>	<u>2021-22</u>		
General Fund	\$20,857,026	\$21,263,738	\$406,712	1.95%
Debt Service	\$ 1,157,600	\$ 1,160,750	\$ 3,150	
Total Tax Levy	<u>\$22,014,626</u>	<u>\$22,424,488</u>		

15

Sources of Revenue



16

Budget Factors Highlights

Increased Expenses

- Annual Salary increases and additional custodian support
- Increased Special Education costs
- Health Benefit increase of 5%; Dental 2%
- PERS pension liability increase of 15.11%;
- General Liability & WC increase of 12%
- Transportation increase of 3.42%
- Security SRO increase 4.89%

Reduced Revenues

- Rental Income \$50,000
- Reduced Interest on Investment \$32,000

17

Appropriations

	Revised 2020-21	Proposed 2021-22		
Tuition	215,340	250,610	35,270	16%
Attendance	77,666	79,657	1,991	3%
Health Services	314,995	322,754	7,759	2%
Speech/OT/PT	445,864	452,268	6,404	1%
Extraordinary Svs.	50,000	60,000	10,000	20%
Guidance	404,903	396,812	-8,091	-2%
CST	589,668	607,877	18,209	3%
Curriculum & Instruct	316,152	299,699	-16,453	-5%
Lib Media	446,717	426,667	-20,050	-4%
Prof Develop	210,779	211,514	735	0%
Gen Admin	496,226	491,342	-4,884	-1%
School Admin	870,432	872,102	1,670	0%
Business	388,544	379,879	-8,665	-2%
Technology	328,242	296,850	-31,392	-10%
Custodial, Maint & Security	2,506,908	2,547,843	40,935	2%
Transportation	1,784,460	1,838,415	53,955	3%
Benefits	3,992,658	4,123,701	131,043	3%
Instruction	6,905,950	7,126,926	220,976	3%
Special Ed	1,664,922	1,511,679	-153,243	-9%
Basic Skills	324,849	335,900	11,051	3%
Bilingual	207,366	199,660	-7,706	-4%
Student Activities/ Athletics	248,432	248,442	10	0%
Special Schools	162,650	165,650	3,000	2%
Capital Outlay	620,080	535,050	-85,030	-14%
	23,573,803	23,781,297	207,494	18

Tax Impact on Chester Borough

2021/2022 Tax Rate Calculations			
	2019/2020	2020/2021	2021-2022
General	\$3,463,943	\$3,614,299	\$3,463,943
Debt	\$195,650	\$200,600	\$195,650
School Year	\$3,659,593	\$3,814,899	\$3,659,593
Calendar Year	2020	2020	2021
Total Taxes		\$3,737,246	\$3,896,249
*Ratables		\$392,740,606	\$397,129,004
Per Dollar		\$0.0095	\$0.0098
Per \$100		\$0.95	\$0.98
Average Assessed		498,000	511,600
Per \$100		\$4.739	\$5.019

*Final Equalization Table For The County Of Morris For The Year 2021

19

Tax Impact on Chester Township

2021/2022 Tax Rate Calculations			
	2019/2020	2020/2021	2021-2022
General	17,054,208	17,242,727	17,492,031
Debt	963,226	957,000	954,859
School Year	18,017,434	18,199,727	18,446,890
Calendar Year	2020	2020	2021
Total Taxes		18,108,581	18,323,309
*Ratables		1,873,646,901	1,841,763,494
Per Dollar		\$0.0097	\$0.0099
Per \$100		\$0.97	\$0.99
Average Assessed		663,600	661,500
Per \$100		\$6.414	\$6.581

*Final Equalization Table For The County Of Morris For The Year 2021

20

