

SECOND GRADE



NORTHWEST PARENT INFORMATION NIGHT



...WHERE PARENTS, STUDENTS AND TEACHERS
REACH FOR THE STARS...



WELCOME TO SECOND GRADE



- ❖ COMMUNICATION
- ❖ CURRICULUM
- ❖ TESTING
- ❖ PROJECTS



- ❖ VISITORS
- ❖ BIRTHDAYS
- ❖ CONFERENCES



COMMUNICATION

- ❖ School wide Newsletters – every month
- Teacher Weekly News



❖ MESSAGES

- ❖ *E-Mail*
- ❖ *Voicemail*
- ❖ *Office*
- ❖ *Facebook, Listserv, PTO ,
District Website www.pfisd.net*



- ❖ Notes in Folders – ensures fastest response
- ❖ Remind.com -





School Day



- Learning at Northwest starts at 7:20
- Free Breakfast is offered at 7:20
- Tardy Bell rings at 7:40
- Lunch is 11:15-11:50
- Conference time 1:00 – 1:45
- School Dismissal at 2:40





CURRICULUM

❖ REPORT CARDS EVERY 9 WEEKS



❖ LANGUAGE ARTS/SOCIAL STUDIES

MATH/PROBLEM SOLVING

WRITING and EDITING

HANDWRITING/SPELLING/VOCABULARY

SCIENCE



“How Can I Help At Home?”



❖ Reading

- Listen to your child read and ask them questions
Practice retelling what they read
- Practice sight words (**1000 Word Challenge**) – Time 2 minutes and watch them read to check their accuracy.
- **Accelerated Reading Program** – Leveled books; goals; 85% accuracy for comprehension; Parent access to check student progress
- **Wordly Wise Vocabulary** – Northwest initiative to improve reading and writing performance and build vocabulary



“How Can I Help at Home?”



❖ MATH

- **Excel** – Daily spiraled math lessons with homework Mon.–Thurs.; using the Check Answer method is required;
- **Math Fact Fluency** – end of year goal is 100% accuracy for both mixed addition and mixed subtraction facts (100 problems in 5 min.); Flash cards are available for additional practice
- **Clock Time** - telling time on an analog clock;
- **Counting Money** –count loose change past \$1.00
- **Sumdog** – every student has their own log in account and password; available for home use for math practice; Kids like it!



TESTING

❖ NNAT

- Cognitive Abilities Test – October

❖ DRA & DIBELS

- *Tracks reading progress – 3 times a year*
- Results discussed during Parent/Teacher Conferences.

❖ ACCELERATED READER

- Begins with STAR Reader Test for Diagnostic Data
- Matches Readers with appropriately leveled books
- Goal setting and tracking;
- Parent access for following student progress gives you the
 - ability to help with encouragement and praise

❖ Common assessment in Math – TEMI PM

❖ Bundle Math tests – every three week bundle unit

❖ Ongoing fluency checks for math facts

❖ and reading sight words





HOMEWORK

Daily Reading:

20 Minutes Fall/30 minutes Spring

Sight word practice:

Read through at least once daily

Math:

Math worksheet and/or math fluency

Spelling/Vocabulary: review/practice on Thursdays

Think Central: student access to assignments from text books online through the internet -

Go Math!, Science Fusion, and Journeys



AT HOME PROJECTS



Science Fair – optional for children who want to participate
early January

Timelines- students create timelines of important events
in their lives
January: (due date to be announced)





BEHAVIOR EXPECTATIONS

Be safe. Be respectful. Be responsible.

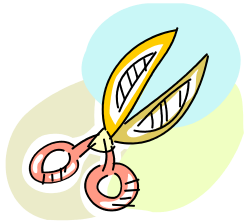
- ❖ Northwest has high expectations for student behavior to ensure a positive learning environment.
- ❖ These expectations will be taught, modeled, and reinforced all year long.



VISITORS

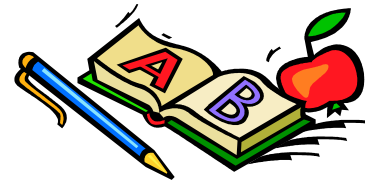
- ❖ Visitors must stop by the office to get a badge to ensure the safety of all students.
- ❖ Please schedule visits to the classroom with the teacher.
- ❖ Parents are invited to share their expertise and/or experiences. (cultures, professions, hobbies)





How Can I Help?

- There are many different opportunities to help your child's school.
 - Monitor child's homework/reading
 - Classroom assistance/tutoring
 - Materials preparation
 - Connect Target Red Card to Northwest Elementary
 - Collect and send Box Tops to school all year
 - Volunteer to help out at PTO events
 - Support classrooms by working one-on-one with students or in small groups (reading, math facts, sight word fluency)
- Background checks are required annually for volunteers working with students





BIRTHDAYS & CELEBRATIONS



❖ Birthdays

❖ *CUPCAKES OR COOKIES*

ARE SHARED AT RECESS (no cakes)

❖ School Recognition

❖ Class Parties

❖ *THREE TIMES PER YEAR*







ABSENCES

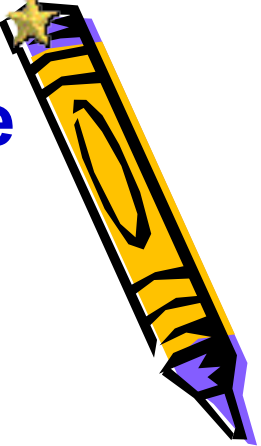


- ❖ Please call the office if your child is unable to come to school. Parents must provide a written excuse or a doctor's note.
- ❖ In Texas, school funding is based on the daily attendance.
- ❖ A 1% increase in student attendance over a school year would increase P.I.S.D's funding by over \$1.2 million.
- ❖ Just a reminder, learning begins at 7:20. Breakfast is provided between 7:20-7:40.





Conferences are required to ensure your child's success



❖ Please check your child's folder for
conference information coming soon.

