

***CITIZENS
FACILITIES
ADVISORY COMMITTEE***



Meeting #3
May 8, 2018

Agenda

- Meeting #2 Recap
- Departmental Presentations

Overview – Dr. Troy Galow

- CTE – Ryan Merritt
- Fine Arts – Manuel Gamez
- Curriculum & Instruction – Brandy Baker
- Athletics – Todd Raymond
- Technology Services – Victor Valdez

Questions

- Overview of Facility Assessment Update - Huckabee
- Discussion
- Closing



DEPARTMENTAL PRESENTATIONS



CAREER & TECHNICAL EDUCATION (CTE)



Career & Technical Education

Citizens Facilities Advisory Committee



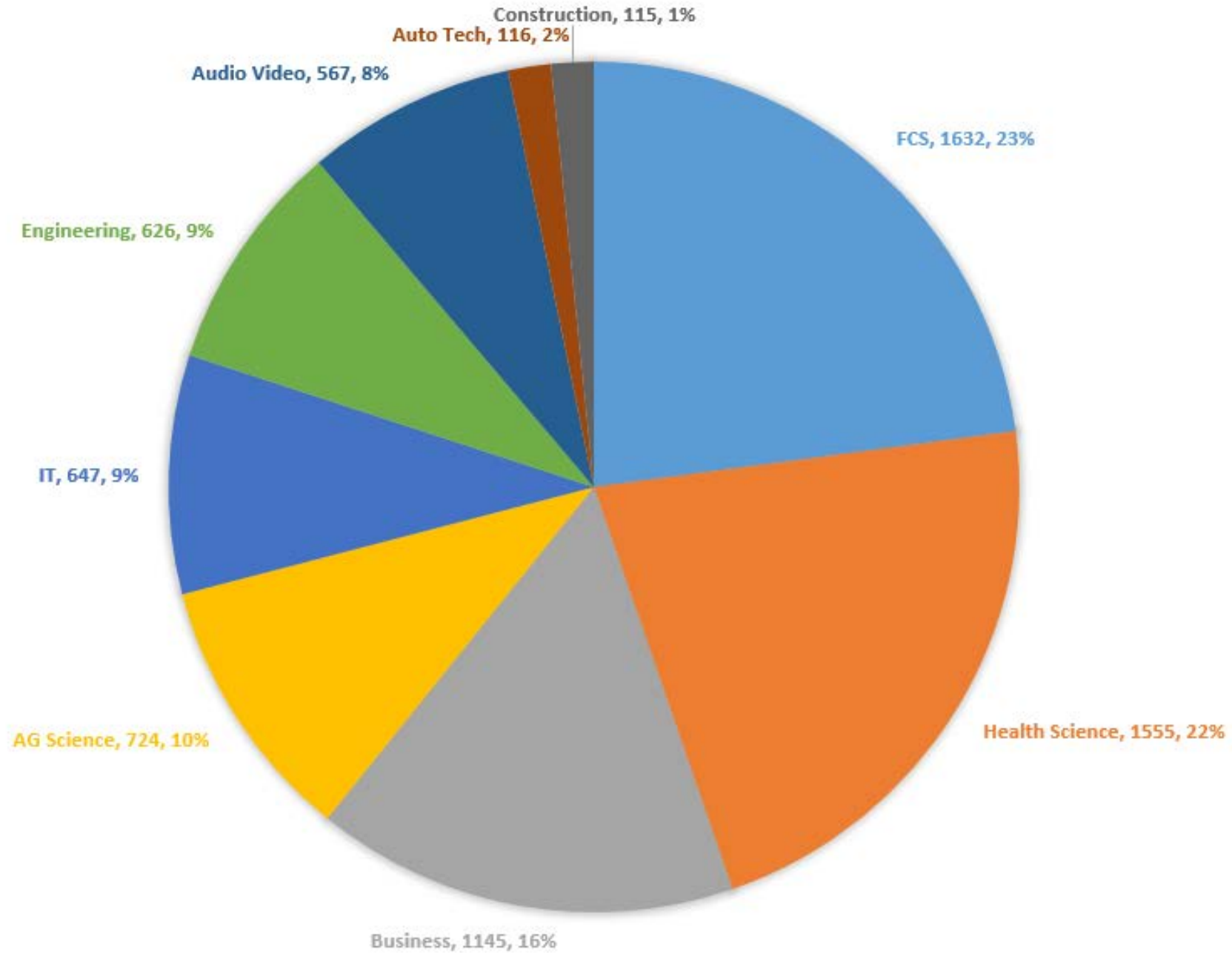
CTE by the Numbers

- Total CTE Seats Serve: 9,000 (2016-2017)
- Total Individual CTE Students: 6,333 (2016-2017)
 - 5,711 In High School
 - 80% of all high school students enrolled in a CTE
 - 622 in Middle School
- Total CTE Teachers: 85 (70.6 FTEs)
- Individual CTE Courses: 109
- 3 Endorsements Areas
 - 23 Pathways of 4 courses

Career Cluster		CHS	HHS	PHS	WHS
Public Services	Education & Training	*	*	*	*
	Government & Public Administration		*	*	
	Health Science	*	*	*	*
	Human Services	*	*	*	*
	Marine JROTC		*		
Science, Technology, Engineering & Math	Engineering	*	*	*	*
	Biomedical Science				*
	Computer Science	*	*	*	*
	Computer Maintenance & Networking		*		
	Construction	*	*	*	
	Information Technology	*	*	*	*
Business & Industry	Animal Science		*	*	*
	Audio Video Production	*	*	*	*
	Automotive Technology			*	
	Banking & Finance	*	*	*	*
	Business Management & Marketing	*	*	*	*
	Culinary Arts	*			
	Horticulture		*	*	
	Hospitality & Tourism	*	*	*	
	Journalism & Newspaper	*	*	*	*
	Video Game Design	*			
	Welding		*		*



2017-2018 STUDENT ENROLLMENT BY PROGRAM AREA



Career & Technical Student Organizations

- 22 individual CTE student organizations.
- Gives student leadership opportunities
- Competitive Events
 - Regional Level
 - State Level
 - National Level



Our Challenges: Programmatic Needs

- Pflugerville High School
 - Agricultural Science (Facilities)
 - Automotive Technology (Facilities)
- Connally High School
 - Culinary Arts (Facilities, Overcrowding, & Scheduling)
- Hendrickson High School
 - Agricultural Science (Facilities)
- Weiss High School
 - Campus Ag Barn
- District Ag Barns
 - Automatic Gate with badge system



Ag Science (PHS)

- Current Status
 - Facilities limit course options
 - Restricts program growth
 - One cause of high teacher turnover



Ag Comparison

- Hendrickson High School

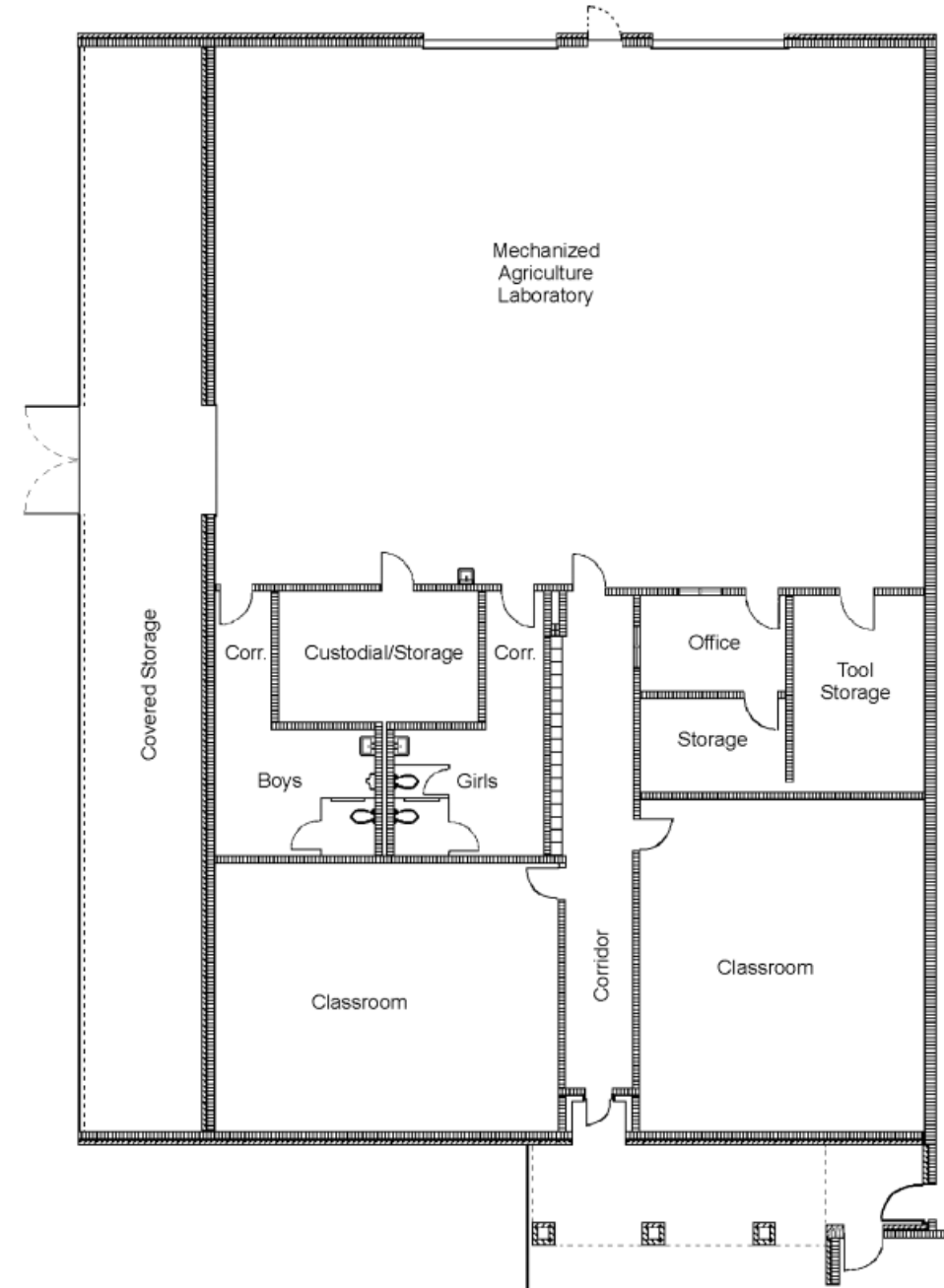


- Weiss High School



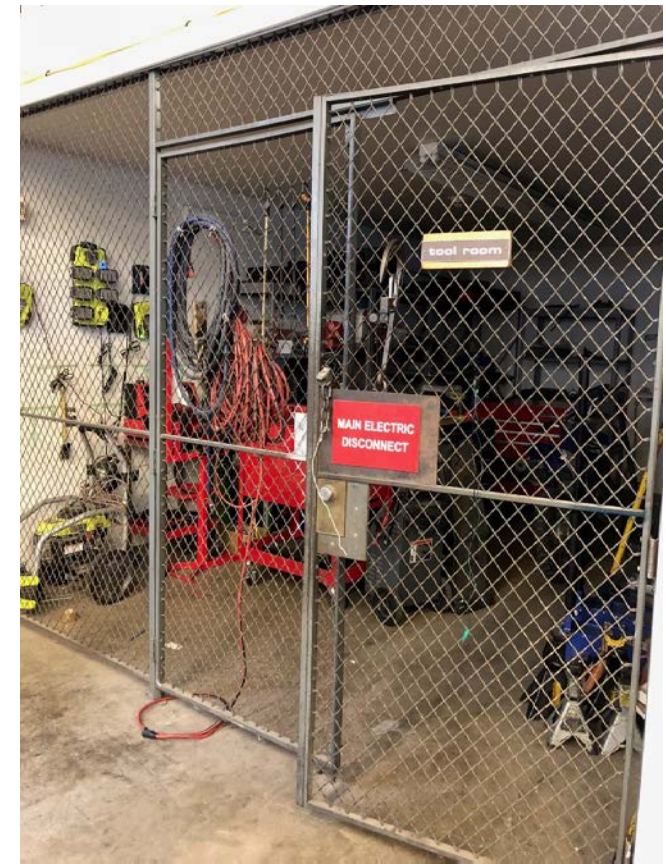
Ag Science (PHS)

- Potential Solution
 - New Facility
 - Metal building (matching auto shop & tech building)

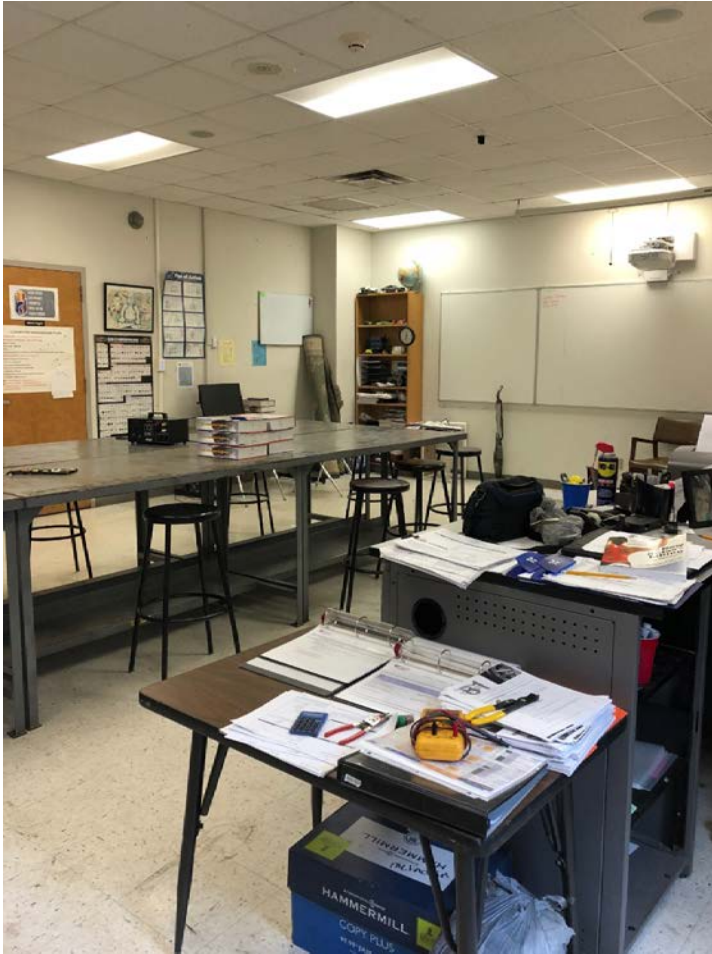


Auto Tech (PHS)

- Current Status
 - Facilities does not meet NATEF standards
 - Tool Room
 - Loft
 - Outside Storage Area
 - Growth Challenges
 - Limited Classroom Space



Auto Tech (PHS)



Auto Tech (PHS)

- Potential Solution
 - Additions/Renovations to existing facilities
 - Equipment



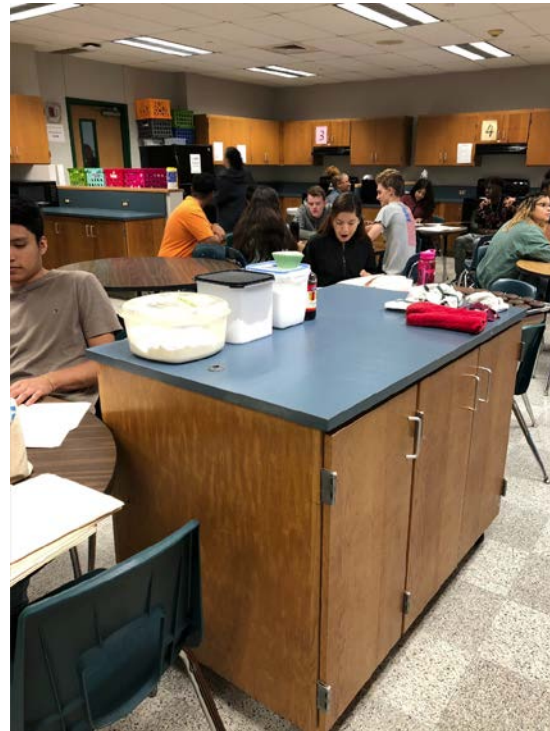
Culinary Arts (CHS)

- Current Status
 - Increasing enrollment in classes requiring access to a commercial kitchen.
 - Capacity Issues



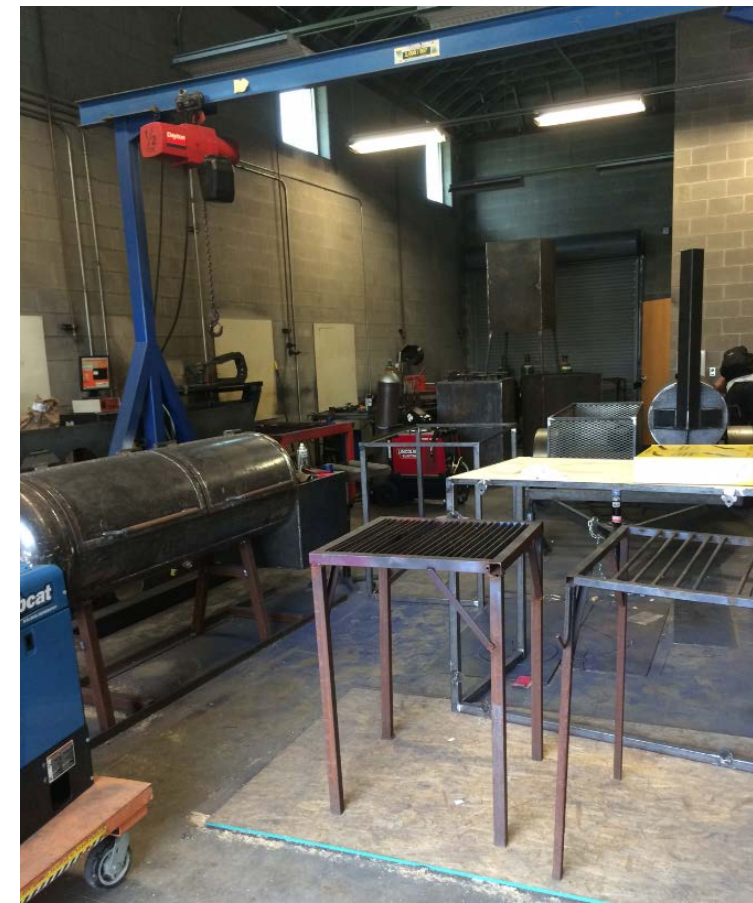
Culinary Arts (CHS)

- Potential Solution
 - Repurposing facilities/existing space
 - Equipment



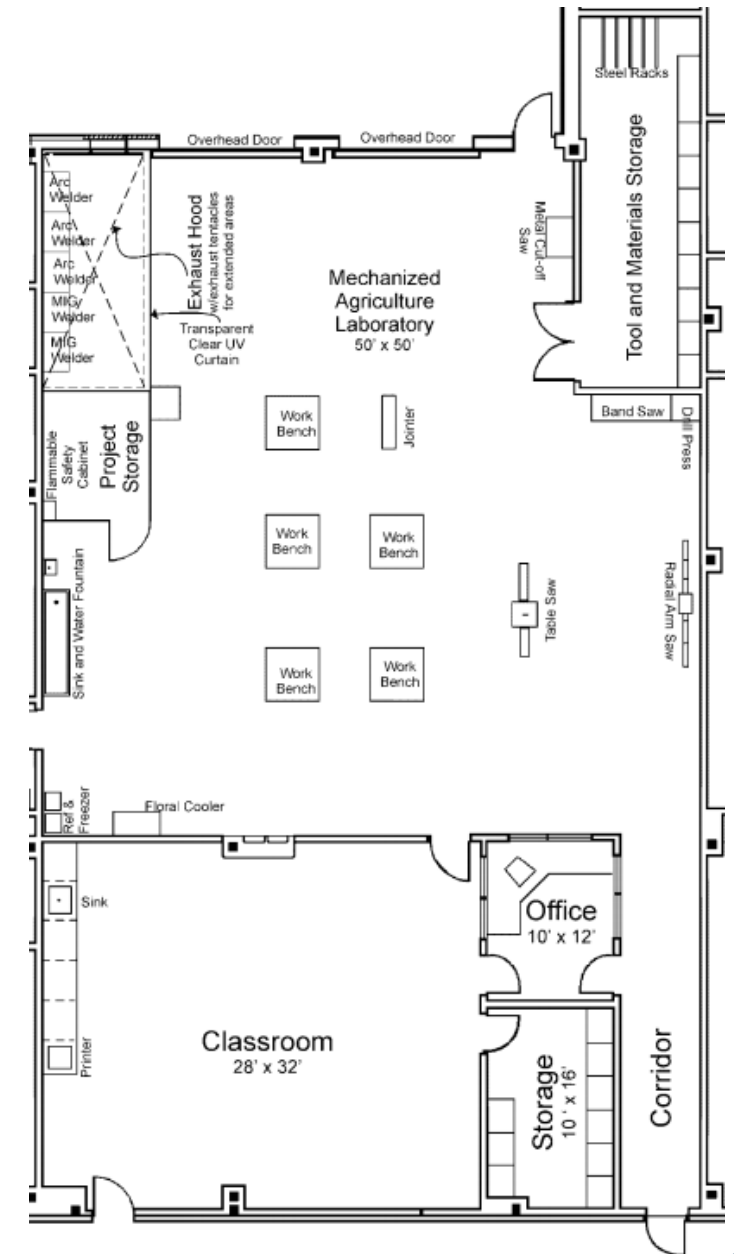
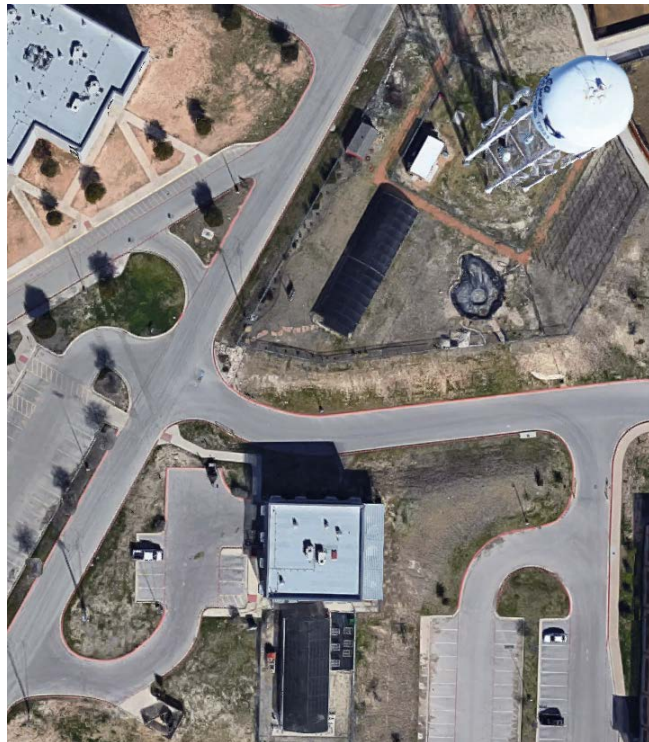
Ag Science (HHS)

- Current Status
 - Program has outgrown space
 - Additional classroom and workshop space is needed



HHS

- Potential Solution
 - Additions to existing facilities or separate metal building



Ag Barn (WHS)

- Current Status
 - Sharing Hamann Ag Facility with HHS.
 - Challenges with two campuses uses the same facility.
 - Capacity issues as enrollment increases at WHS.
- Potential Solution
 - New campus Ag facility



Ag Facilities

- Current Status
 - Gates left open allowing unauthorized access to facility.
 - No accountable for barn related issues.
- Potential Solution
 - Automatic gate that opens/closes with badge access.



Prioritizing Programmatic Needs

- Pflugerville High School
 - Agricultural Science (Facilities)
 - Automotive Technology (Facilities)
- Connally High School
 - Culinary Arts (Facilities, Overcrowding, & Scheduling)
- Hendrickson High School
 - Agricultural Science (Facilities)
- Weiss High School
 - Campus Ag Barn
- District Ag Barns
 - Automatic Gate with badge system



FINE ARTS





Department Presentation

May 8, 2018



FINE ARTS DISCIPLINES

Band
Choir
Dance
Elementary Music
Elementary Art
Orchestra
Theater Arts
Visual Arts

The Department of Fine Arts will serve 23,757 students in the District for the 2018 – 2019 academic year. The current enrollment for PFISD is 25,800.

PROGRAM ACCOLADES

- Hendrickson HS 11 All State Band Musicians
- Weiss HS - 1 All State Band Musician
- Connally HS – 1 All State Band Musician
- Connally HS – 1 All State Choir Vocalist
- Heart of Texas Classic Sweepstakes- HHS
- Fiesta Texas Dance Classic Grand Champion –CHS
- Elementary Art and Music Show Case
- Westview MS Orchestra UIL Sweepstakes
- 4 State UI OAP appearances – HHS
- 3 State UIL OAP appearances- CHS
- State Theatrical Design Silver Medalist – HHS
- State VASE Qualifiers – CHS, HHS and WHS
- District Art Showcase

FINE ART FACILITY CONSIDERATIONS

Theater Arts

- Shop and Storage Space – (PHS)
- Black Box –(PHS)
- Classroom for Theatre- (CHS)
- Upgrade Lobby Space- (PHS/CHS)
- Theater Lighting Upgrade (All HS/MS)
 - LED / Traditional Lighting
- Theater Sound Upgrade (All HS/MS)
- Curtain Repairs/ New
- Rigging inspections and Code updates- (All HS)

Band Department

- Expansions of Middle School Band Halls / Weiss HS
 - All campuses are in need of space.
 - Upgrade to Wenger Lockers and Wenger Practice facilities
- Sound System Upgrade (Halls)
- Capital Outlay
- Wenger Acoustic Treatment.
 - Removal of old acoustical panels.
- Removal of Carpet from all FA rehearsal spaces.



BAND DEPARTMENT





BAND / ORCHESTRA DEPARTMENT



Theater Department





FINE ART FACILITY CONSIDERATIONS

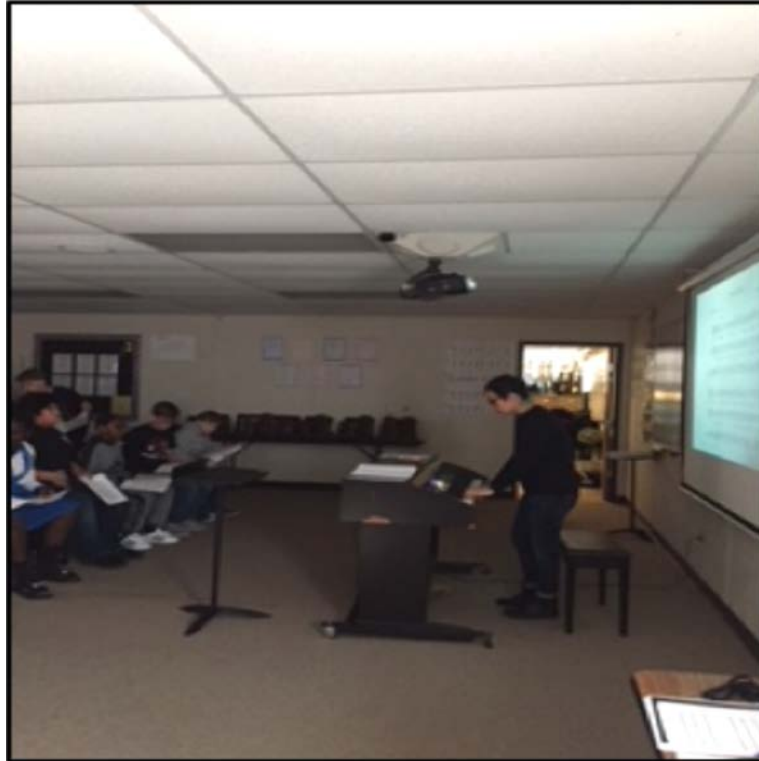
Choir Department

- Expansions of Middle School Choir Halls
 - PMS Choir is in need of new space. They are in an extended portable.
 - Wenger Practice facilities
- Sound System Upgrade (Halls)
- Capital Outlay – New Pianos
- Wenger Acoustic Treatment.
 - Removal of old acoustical panels.
- Removal of Carpet from all FA rehearsal spaces.

Visual Art Department

- Upgrade Kilns and technology (All)
- Upgrade student art tables and chairs (All)
- Classroom Space (KLMS)
- Storage Rooms and updated sinks (All)
- Removal of Carpet from all Art classrooms

CHOIR DEPARTMENT



Visual Art Department





FINE ART FACILITY CONSIDERATIONS

Dance Department

- Expansion of Dance Halls
- Incorporate Locker rooms
- Incorporate Showers
- Upgrade Sound System
- Technology Upgrade
- Elevated Viewing Space

Orchestra Department

- Sound System Upgrade
- Capital Outlay
- Wenger Acoustic Treatment
- Removal Carpet



DANCE DEPARTMENT





ELEMENTARY MUSIC



ELEMENTARY ART



PRIORITIZING NEED

- Pflugerville High School
 - Choir Hall
 - Theater Black Box
 - Scene Shop
 - Dance Hall
- Pflugerville Middle School
 - Choir Hall
- Dance Facilities
 - Expansion of Halls
 - Lockers & Showers
- Band Department
- Wenger Lockers & Treatment
 - Lockers
 - Practice Rooms
 - Possible Expansions
 - Capital Outlay
 - New FA wings for MS
- HS & MS Theaters
 - Theater Lighting Upgrade
 - Theater Sound Upgrade
 - Curtain Repairs
 - Classroom – CHS



PfISD FINE ARTS DEPARTMENT

The Department of Fine Arts will continue to strive to provide support, mentorship and guidance to all PfISD administration, teachers and students.

CURRICULUM & INSTRUCTION





Curriculum and Instruction

May 8, 2018

Who is in our schools?

- Want to have a say in their education.
- Often have higher levels of digital literacy than their parents or teachers.
- Don't care as much about having a job as they do about making a difference.
- Demand the freedom to show their wild creativity.
- Want to connect with others in real time on their own terms.
- They want to be connected.
- Collaborate amazingly well.
- Really can multi-task.
- Appreciate a "trial and error" approach to learning new skills.
- Learn by doing.
- Have a "can do" attitude.
- Thrive in an atmosphere of controlled challenge.
- Have multicultural awareness and appreciation.
- Open to change.
- Are equal parts "consumer" and "creator".
- Increasingly aware of the world around them.
- Know where to go to find information.
- Are better educated than any generation before them.
- Expect inter-disciplinarity.
- Know that they are the future.

Student-Centered Design



Flexibility





Technology



Learning Anywhere



Buildings That Teach



SIZE



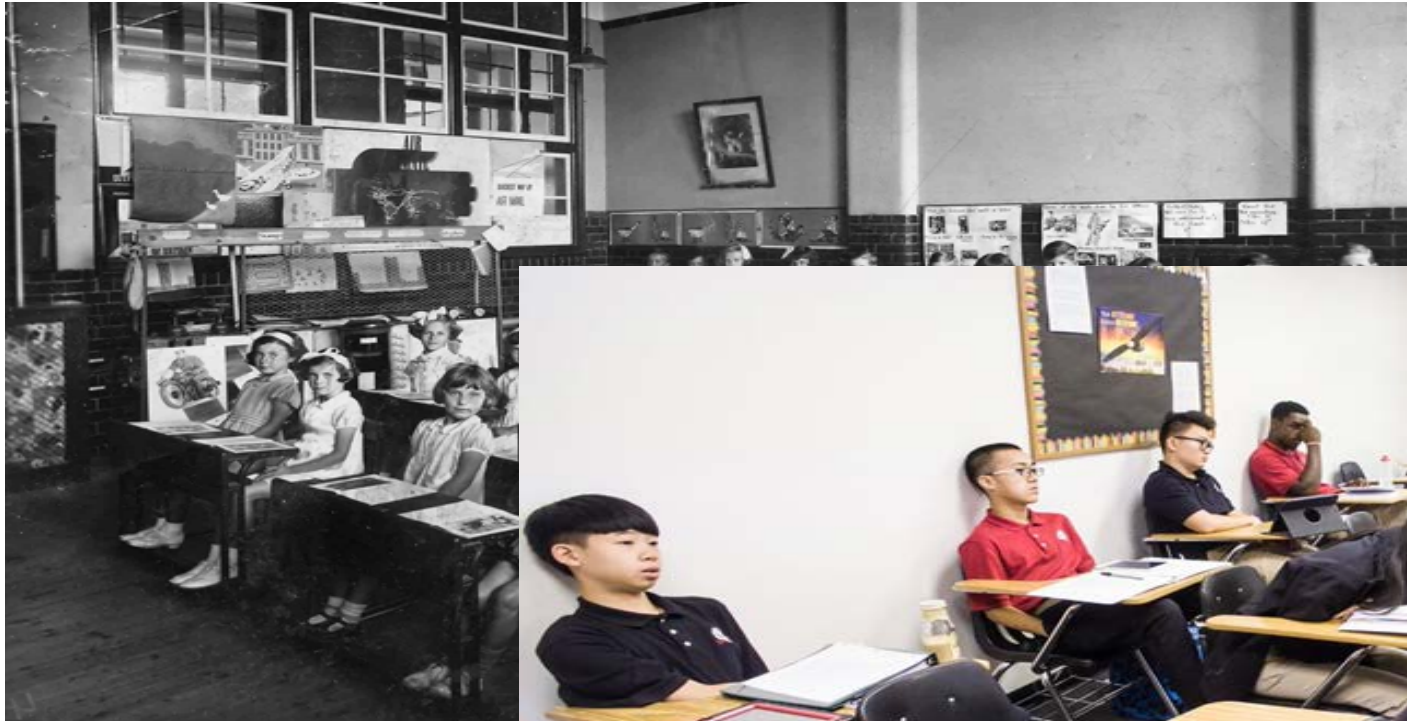
Next-Gen High Schools



STEM



Our Scholars have changed...



Potential Solutions

- Design, build and retro-fit existing facilities that are aligned with our scholars' academic, social and emotional needs, current pedagogical approaches, and college and career readiness expectations.
- Outfit facilities with furniture that support scholars' academic, social and emotional needs, current pedagogical approaches, and college and career readiness expectations.
- Create spaces for teachers and leaders across the district to learn together, share best practices, and build social and professional capital.

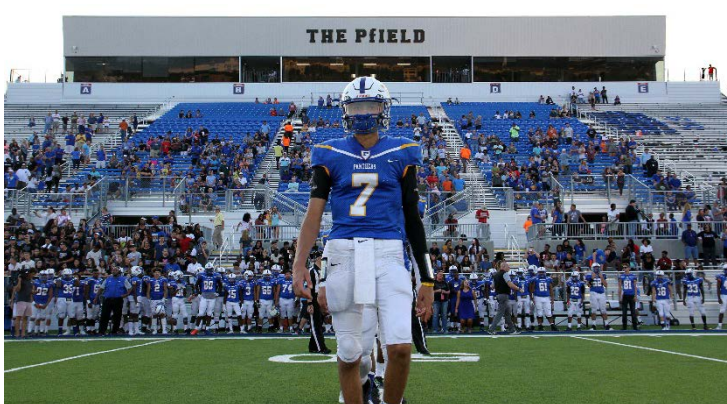
ATHLETICS





CFAC PRESENTATION

Todd Raymond
Athletic Director



Mission:

Develop a successful athletic program that promotes high academic standards while preparing the student-athletes to become productive citizens. Athletics is an integral part of their educational process and overall development.

High School Programs:

- Basketball
- Baseball
- Cheer
- Cross Country
- Football
- Golf
- Powerlifting
- Soccer
- Softball
- Golf
- Tennis
- Track & Field
- Volleyball
- Wrestling



Middle School Programs:

- Basketball
- Cheer
- Cross Country (Fall of 2018)
- Football
- Golf (Spring of 2018)
- Soccer
- Track & Field
- Volleyball

2017-2018 Highlights:

- Participation
 - 4,000 students grades 7-12
- HHS football
 - Regional finalists
- Basketball
 - All 6 varsity teams in playoffs
 - 18 combined playoff games
 - HHS girls: regional finalists
- WHS wrestling
 - 3rd place finisher at state
- WHS swim
 - State champion
- Soccer
 - 5 out of 6 varsity soccer teams made the playoffs
- State Track Meet
 - PHS has 2 participants
 - WHS has 1 participant
- State Tennis Tournament
 - CHS has 1 participant
- State Golf Tournament
 - HHS has 1 participant



The Pfield

Vision:

To provide a first class experience that is representative of PfISD and our community. The Pfield may be a person's first, and only, impression of PfISD. We want it to be an amazing one.

Season 1 Events

- PfISD Festival of Bands
- 15 regular season football games
- 4 MS championship football games
- 4 UIL playoff football games
- PfISD Education Foundation Pfling
- 4th of July Pfirecracker Pfestival
- HS regular season soccer games
- UIL playoff soccer games
- MS championship soccer games
- Alex Okafor football camp (summer)
- Colt McCoy football camp (summer)



Highlights

- E-ticketing
- Positive feedback from visiting teams and fans
- Student run video board
- Concession Co-op
 - *Campus boosters raised over \$50,000*

Facility Needs Moving Forward

Middle School Tracks

- MS's don't have all weather tracks
 - *Asphalt*
 - *Can't use track spikes*
 - *Hard on their legs (increases injuries)*
 - *Can't hurdle (too dangerous)*
 - *Tracks would be used in off-season athletics and PE*

PARK CREST MS



WALLACE MS (HAYS CISD)

- All 6 Hays CISD MS's have a 6 lane all weather track
- Tracks are open to the public for use outside of school hours

Recommendation:

Resurface all MS tracks with an appropriate all weather track surface.

Facility Needs Moving Forward (2)

Weight Rooms

- Weight room equipment on multiple campuses needs to be replaced.
 - *WR's are used by all athletes*
 - *Old equipment is a safety problem and can increase the probability of injury.*
 - *New equipment maximizes efficiency and performance.*

New equipment



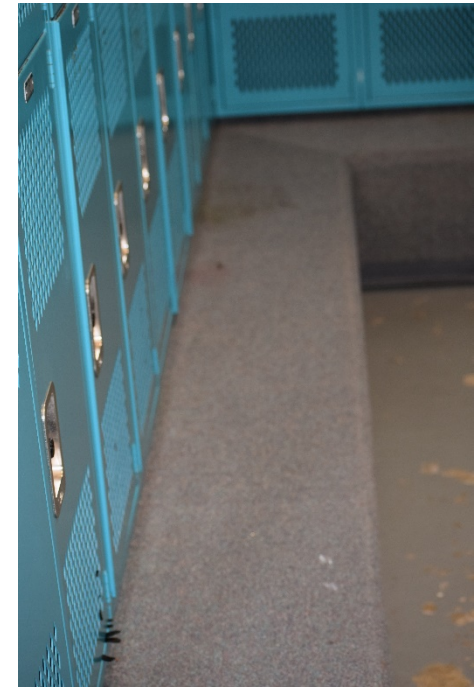
**Old and out of date
equipment at Pflugerville
and Connally HS**



Facility Needs Moving Forward (3)

Locker Rooms

- Lockers in many of the older campuses such as Connally HS are the originals
 - *Broken (not repairable)*
- Carpet-covered benches
 - *Original to the campus (20 years in some places)*
 - *Unsanitary*



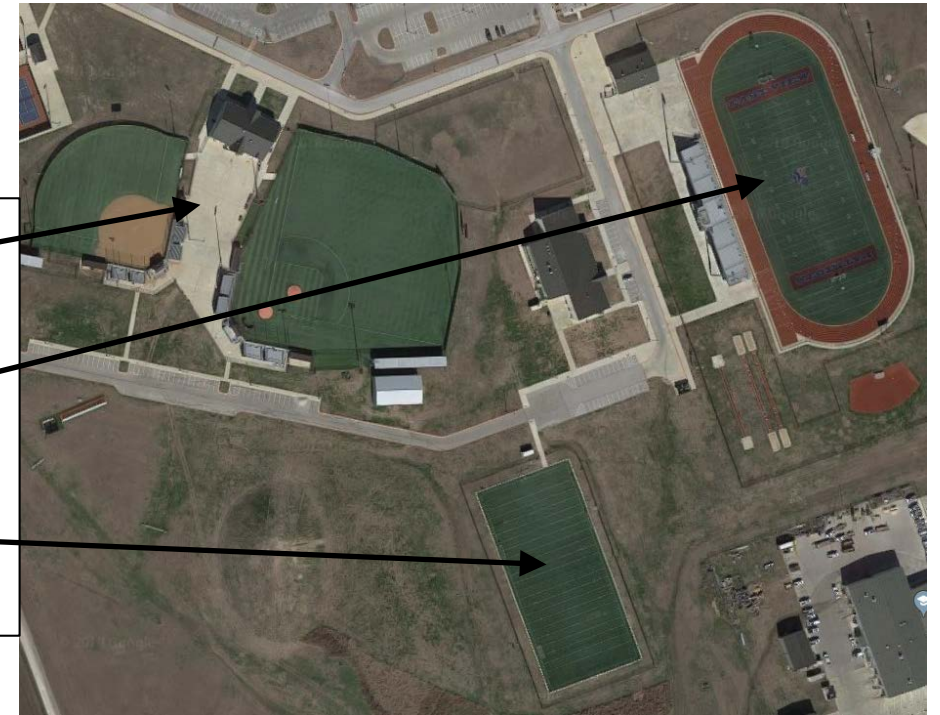
Facility Wants Moving Forward (Long Term)

- Swim facility
 - *Every HS practices at Gilleland Pool*
 - *Limited space and time*
 - *No dive facility*
 - *Restricts the growth of the programs*
- Turf Baseball/Softball fields
- Update chain-link baseball/softball backstops to netting and appropriate height
- Turf practice field
 - *Provides a second place for football and soccer to practice, especially when the track is in use*



EASTVIEW HS (GEORGETOWN)

- Turf baseball/softball
- Turf game field (Soccer and sub-varsity football)
- Turf practice field



TECHNOLOGY SERVICES





Technology Services

May 8, 2018





Technology Services

5 Major Areas

Technical Services

Servers, Computer Repairs, Telephones, Internet, Wireless, Help Desk

Information Services

PEIMS, Student & Business Information, Programming, Database Support

Integration Services

Curriculum Development, Teacher/Classroom Modeling Support, Training

Data & Demographic Services

Campus Data Integrity, Online Enrollment, Attendance & Boundary Review

Project Management

Equipment Deployment, Bond Program Management



Technology Services Needs Assessment (2019-2022)



Technology Services

5+ Year Replacement Overview



* 7+ Years

2018	2019	2020	2021	2022
2387	1528	1248	204	1455
237	508	7380	1412	190
210	0	775	60	225
297*	53*	63*	52*	0

Student Devices Initiative

Middle Schools

Technology Services

5+ Year Replacement Overview



1 E-Rate Eligible
2 End of Life/Support

2018	2019	2020	2021
-	-	-	2600 ¹
-	-	755 ¹⁻²	-
-	1700	-	-
-	40	500+	-

Technology Services

What is E-Rate?

Created in 1996 (Telecommunications Act)

Subsidizes Network Services/Equipment up to 90%

Available for Schools and Libraries

5-Year Increments

\$150/Student

Based on student enrollment per campus

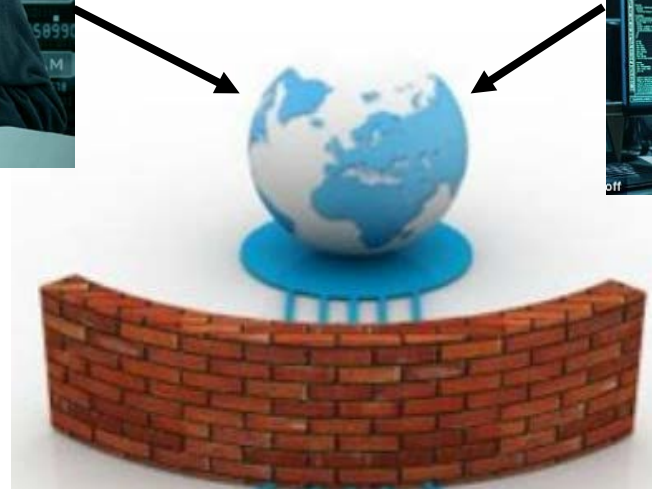
2015 – PfISD Awarded \$2.44 Million in E-Rate Upgrades

Wireless – Cabling – Network Hardware



Technology Services

What about security?





Technology Services

May 8, 2018



QUESTIONS



OVERVIEW OF FACILITY ASSESSMENT UPDATE



Facility Assessment History

- Original assessment of facility conditions completed January 2014
- Assessed all schools, administration and support facilities through site visits and interviews
- Conditions evaluated include:
 - General Building and Site Conditions
 - Building/ Life Safety Code Compliance
 - Handicap Accessibility
 - Security
 - Mechanical, Electrical & Plumbing Systems
 - Structural Systems
 - Kitchen
 - Roof
 - TEA Standards



Facility Assessment Update

- The 2018 Update:
 - Identifies new deficiencies or concerns
 - Acknowledges improvements that have been made
 - Updates cost data
 - Analyzes utilization of spaces and confirms capacities
 - Assesses compliance with Texas Education Agency facility standards for room sizes
 - Includes site visits to every campus, meetings with each principal and meetings with all PflSD departments



Facility Assessment Purpose

- Provide data to help prioritize needs and identify potential projects
- Projects can be funded through fund balance or bonds
- From the 2014 Assessment and Master Plan, 106 projects across 28 campuses were developed to address assessment findings, accommodate growth and incorporate evolving expectations. The only remaining projects are:
 - Repurposing of original Timmerman
 - Tackboard installation at some elementary schools
 - Pressbox and Concession Renovations at Connally & Hendrickson



Facility Assessment – Next Steps

- Assessment Update will go to Board of Trustees on May 17
- List of Potential Projects to be developed between PfISD staff and Huckabee and reviewed with Committee at May 22 meeting
- Committee to consider projects and help prioritize, starting at the June 5 meeting



DISCUSSION



Discussion



What does this mean for our facility plan?

What does this mean for this advisory committee?

Are there questions you'd like PflSD to address at a future meeting?



CLOSING



DISTRICT HOME

Select Language

CITIZENS
FACILITIES
ADVISORY COMMITTEE

HOME

COMMITTEE

MEETINGS

RESOURCES

QUESTIONS

CITIZENS FACILITY ADVISORY COMMITTEE

Welcome to the Pflugerville ISD Citizens Facilities Advisory Committee Website

The Pflugerville ISD Board of Trustees is committed to the district's mission: to provide an inspiring, engaging, and relevant education that empowers students to reach their full potential as productive members of a diverse global community.

The Board of Trustees also has been proactively planning for the district's future and has been studying the district's projected growth and other aging and evolving facility needs. This, in conjunction with the district's belief in creating a collaborative culture in which all stakeholders may be a part of discussions regarding the district's future, led the district to reconvene its Citizens Facilities Advisory Committee (CFAC). The committee is an invaluable group of community members formed to study the facility needs of the school district and ultimately present a recommendation to the Pflugerville ISD Board of Trustees for consideration.

Obtaining different perspectives from the entire community is very important to the process, and approximately 50 citizens from a variety of geographic areas and backgrounds make up the CFAC. Members of the committee will study a district-wide facilities assessment, enrollment projections, financial data, results of a community-wide survey and more in order to make the best recommendation.

This website will be updated as the CFAC works through the process and will include meeting agendas, presentations, notes, and relevant resources.

COMMITTEE MEETINGS

APRIL
10

6:00PM
Meeting One
Pflugerville ISD Administration Building
1401 West Pecan, Pflugerville

APRIL
17

6:00PM
Meeting Two
Pflugerville ISD Administration Building
1401 West Pecan, Pflugerville

MAY
8

6:00PM
Meeting Three
Weiss High School (Library)
5201 Wolf Pack Drive, Pflugerville, TX 78660

MAY
22

6:00PM
Meeting Four
LOCATION
TBD

JUNE
5

6:00PM
Meeting Five
LOCATION
TBD

JUNE
26

6:00PM
Meeting Six
LOCATION
TBD

JULY
10

6:00PM
Meeting Seven
LOCATION
TBD

6:00PM



Next Meeting

Meeting #4

Tuesday, May 22

6 p.m.

PfISD Administration Building

Agenda

- Discuss Prioritization Process & Grading Criteria
- Review Legislative & Financial Information
- Summary of Potential Projects
- Group Work



Thank you!

