



# Industry Leadership Council



April 1, 2021

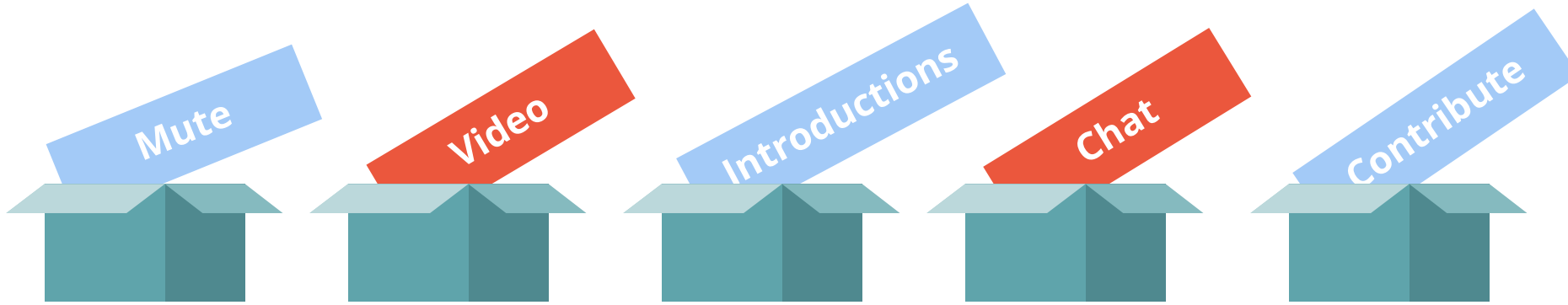
[Sign-In Form](#)

# Agenda

- Sign-In
- Meeting norms & practices
- Introductions: Name, Organization (please add to the chat)
- Purpose & Goal of ILC
- High-Quality CTE Program Framework (Informational)
- Student Recognition / (CTSO and Student Spotlight)
- P-Tech Update
  - Computer & Information Technology Academy
  - Pfuture Teachers Academy
- Teacher Externships - Workforce Solutions
- Building Awareness of Occupations
- Review of PfISD Classroom Facilities & Equipment
- Planning for next meeting



# Meeting Norms & Practices



Mute until you wish to address the group

Keep your video on as much as possible - we want to see you!

Introduce yourself the first time you speak up... and don't forget to sign in!

Post questions or comments in the chat

Don't sit back... contribute! We appreciate you being part of the team!

# Introductions

In the chat, please drop:

- Name
- Organization
- Your favorite thing about Springtime



# Our ILC Purpose

To engage leaders from industry, community & academia to identify tactical actions to develop, improve, & sustain high-quality Career & Technical Education programs in Pflugerville ISD.

- Curriculum
- Equipment & software
- Facilities
- Labor market alignment
- Teacher training
- Credentials
- Student experiences
- Employability training



# 12 Elements of a High-Quality CTE Program of Study



1. Standards-Aligned & Integrated Curriculum
2. Sequencing & Articulation
3. Student Assessment
4. Prepared & Effective Program Staff
5. Engaging Instruction
6. Access & Equity
7. Facilities, Equipment, Technology & Materials
8. Business & Community Partnerships
9. Student Career Development
10. CTSOs
11. Work-Based Learning
12. Data & Program Improvement





**6,500**

Current number of PfISD students enrolled in a CTE course

# CTSO Student Update

## BPA (Business Professionals of America)

2 teams advancing to National competition in April

- JAVA Programming student at Connally High School (1st place at state)
- Animation team at Hendrickson High School (2nd place at state)

## TAFE (Texas Association of Future Educators)

1 National Qualifier in Impromptu Speaking at Connally High School

## HOSA (Health Occupations Students of America)

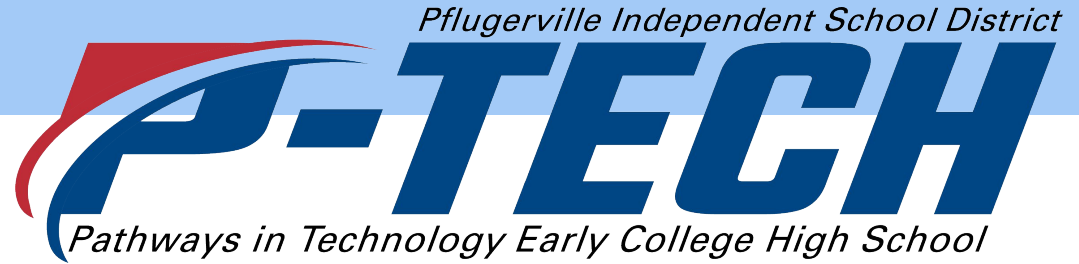
1 National Qualifier in Physical Therapy at Connally High School (2nd place at state)

## Student Spotlight

Monthly space in our Department Newsletter regarding previous students current ventures



# P-Tech Update



# Teacher Externships



Shannon Scriven  
Career & Education Outreach Specialist  
Workforce Solutions Capital Area  
[shannon.scriven@wfscapitalarea.com](mailto:shannon.scriven@wfscapitalarea.com)



# Join us for a teacher externship opportunity in 2021



## Inform and inspire the next generation of Austin's workforce!

**JUNE 2021**

- **Orientation:** Introduce teachers and employers
- **Externship:** Teachers visit employers
- **Debrief:** Teachers develop lesson plans based on their experiences and teach their students about the skills and certifications required by Austin's employers
- **Participate and receive a stipend!**



**Spaces are limited! Sign up today: <http://tiny.cc/2021Externships>**  
**Questions? Contact Shannon Scriven at [shannon.scriven@wfscapitalarea.com](mailto:shannon.scriven@wfscapitalarea.com)**

Equal Opportunity Employer/Program. Auxiliary aids and services are available, upon request, to persons with disabilities. Relay Texas: 1.800.735.2989 (TDD) / 711 (Voice). [www.wfscapitalarea.com](http://www.wfscapitalarea.com)

This document contains vital information about requirements, rights, determinations, and/or responsibilities for accessing workforce system services. Language services, including the interpretation/translation of this document, are available free of charge upon request.

Este documento contiene información importante sobre los requisitos, los derechos, las determinaciones y las responsabilidades del acceso a los servicios del sistema de la fuerza laboral. Hay disponibles servicios de idioma, incluida la interpretación y la traducción de documentos, sin ningún costo y a solicitud.

This workforce product was funded by a grant awarded by the U.S. Department of Labor's Employment and Training Administration. The product was created by the recipient and does not necessarily reflect the official position of the U.S. Department of Labor. The Department of Labor makes no guarantees, warranties, or assurances of any kind, express or implied, with respect to such information, including any information on linked sites and including, but not limited to, the accuracy of the information or its completeness, timeliness, usefulness, adequacy, continued availability, or ownership. This product is copyrighted by the institution that created it.

Join us for an externship opportunity  
for Austin's educators and develop a pipeline  
to your organization's future skilled talent!



**JUNE 2021**

**VIRTUAL, IN-PERSON OR HYBRID**

- Teach educators about your industry
- Designate a contact person to interact with us and the educators
- Introduce the educators to different aspects of your business
- Have different employees interact with the educators
- Educators will create lesson plans based on their experiences



**Click here to complete your interest form!**

**Questions? Contact Jessica Garay: [jessica.garay@wfscapitalarea.com](mailto:jessica.garay@wfscapitalarea.com)**

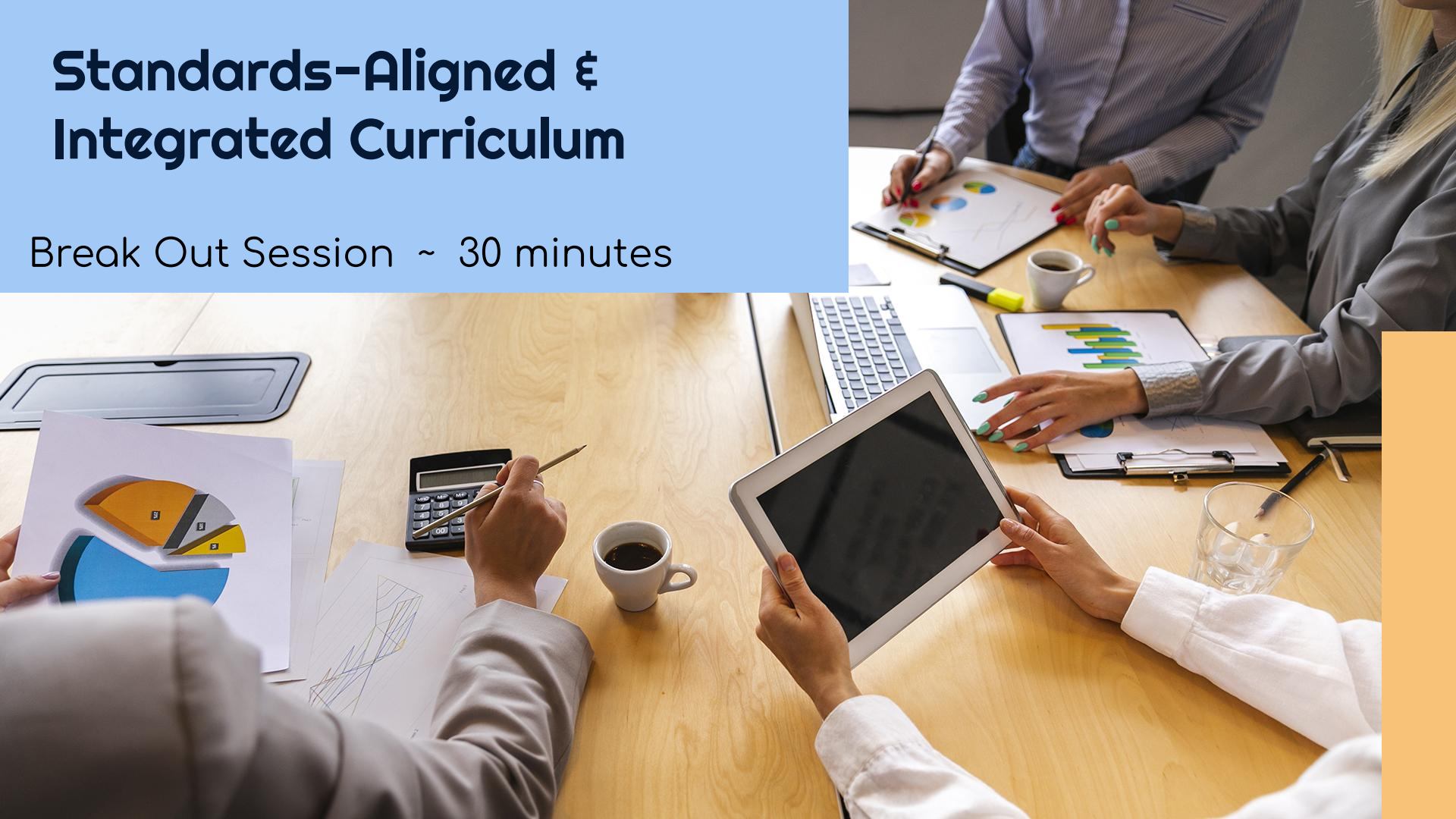
Equal Opportunity Employer/Program. Auxiliary aids and services are available, upon request, to persons with disabilities. Relay Texas: 1.800.735.2989 (TDD) / 711 (Voice). [www.wfscapitalarea.com](http://www.wfscapitalarea.com)

This workforce product was funded by a grant awarded by the U.S. Department of Labor's Employment and Training Administration. The product was created by the recipient and does not necessarily reflect the official position of the U.S. Department of Labor. The Department of Labor makes no guarantees, warranties, or assurances of any kind, express or implied, with respect to such information, including any information on linked sites and including, but not limited to, the accuracy of the information or its completeness, timeliness, usefulness, adequacy, continued availability, or ownership. This product is copyrighted by the institution that created it.



# Standards-Aligned & Integrated Curriculum

Break Out Session ~ 30 minutes



# Things to Consider

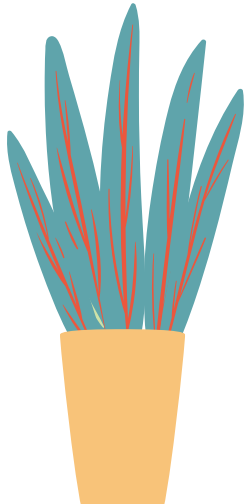
- What skills do our students need to enter the workforce successfully?
- What could we train our teachers on to help lead the cause?
- What credentials are beneficial in your line of work?
- What software & equipment should our students be familiar with to enter the workforce?
- Any work-based learning opportunities?



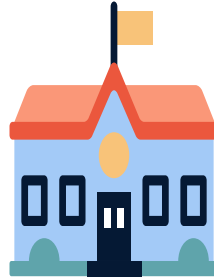
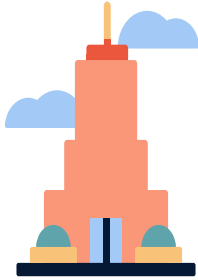
# SHARE OUT

Whole Group

5 minutes



# Opportunities for Engagement



**The possibilities are endless...**

[Building Successful Partnerships: Partner Resource Guide](#)





# Next Meeting

## Fall 2021

Developing vision for each  
program.  
Credentials.

# THANKS!

## Question & Answer session

Don't hesitate to reach out:

- Traci Hendrix, CTE Director
  - [traci.hendrix@pfisd.net](mailto:traci.hendrix@pfisd.net)
- Latasha Wilson, CTE Coordinator
  - [latasha.wilson@pfisd.net](mailto:latasha.wilson@pfisd.net)
- Amber Ham, CTE Instructional Specialist
  - [amber.ham@pfisd.net](mailto:amber.ham@pfisd.net)
- Jackie Yekpabo, P-Tech Coordinator
  - [jacqueline.yekpebo@pfisd.net](mailto:jacqueline.yekpebo@pfisd.net)



CREDITS: This presentation template was created by **Slidesgo**, including icons by **Flaticon**, and infographics & images by **Freepik**.



# Review of Facilities, Equipment, Software

Break Out #2

12 minutes



# What is a vision?

Give visions - so they have context during breakouts

What do our students need to know, need access to to properly learn, what will be equip them so they're prepared for industry or postsecondary?



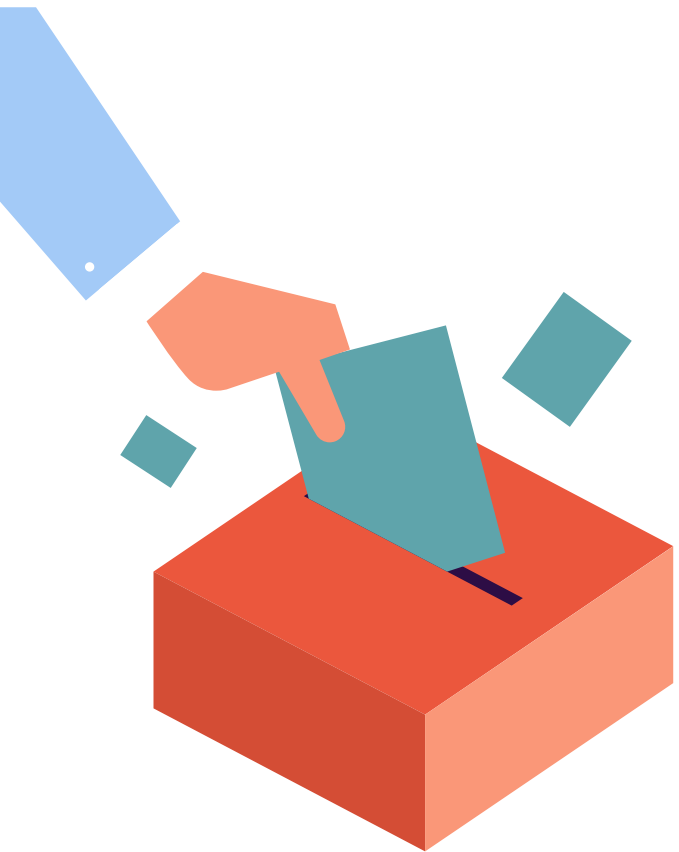
## THEM

Despite being red, Mars is a cold place. It's full of iron oxide dust, giving the planet its reddish cast. It's named after the Roman god of war



## US

Venus has a beautiful name and is the second planet from the Sun. It's terribly hot—even hotter than Mercury—and its atmosphere is poisonous

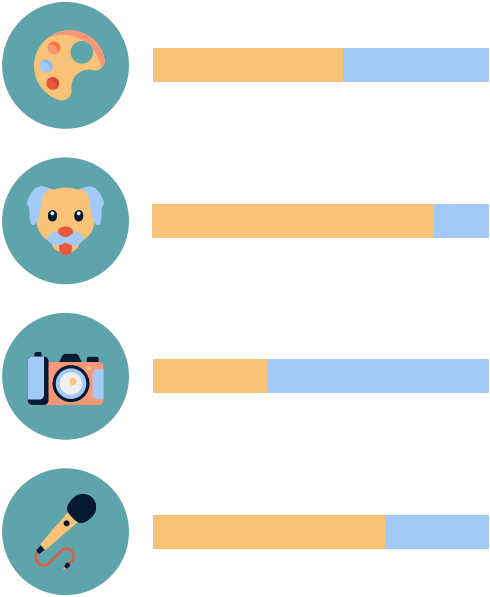
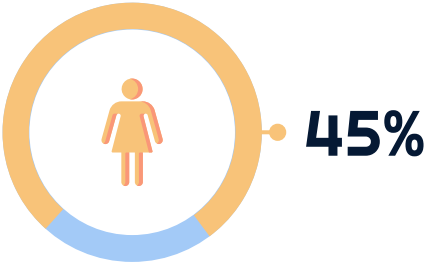


02

# MARKET & CUSTOMERS

You could enter a subtitle here  
if you need it

# OUR CUSTOMERS





# MARKET

10%

## Mercury

It's the smallest planet in the Solar System

15%

## Saturn

It's composed of hydrogen and helium

20%

## Mars

Despite being red, Mars is actually a cold place

25%

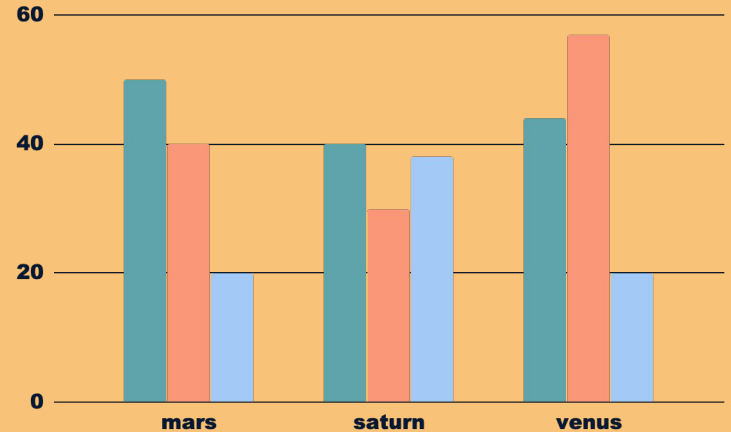
## Jupiter

It's the biggest planet in the Solar System

# SHARE

To modify this graph, click on it, follow the link, change the data and paste the resulting graph here

- Here you can explain the chart data
- Here you can explain the chart data
- Here you can explain the chart data
- Here you can explain the chart data



# BUSINESS ANALYSIS

	JUPITER	MERCURY	MARS
FACTOR 1	Yes	Yes	No
FACTOR 2	Yes	No	No
FACTOR 3	No	Yes	Yes

# OUR SERVICES



## Mercury

Mercury is the closest planet to the Sun



## Venus

Venus is the second planet from the Sun



## Mars

Despite being red, Mars is actually a cold place



## Jupiter

It's the biggest planet in the Solar System



## Saturn

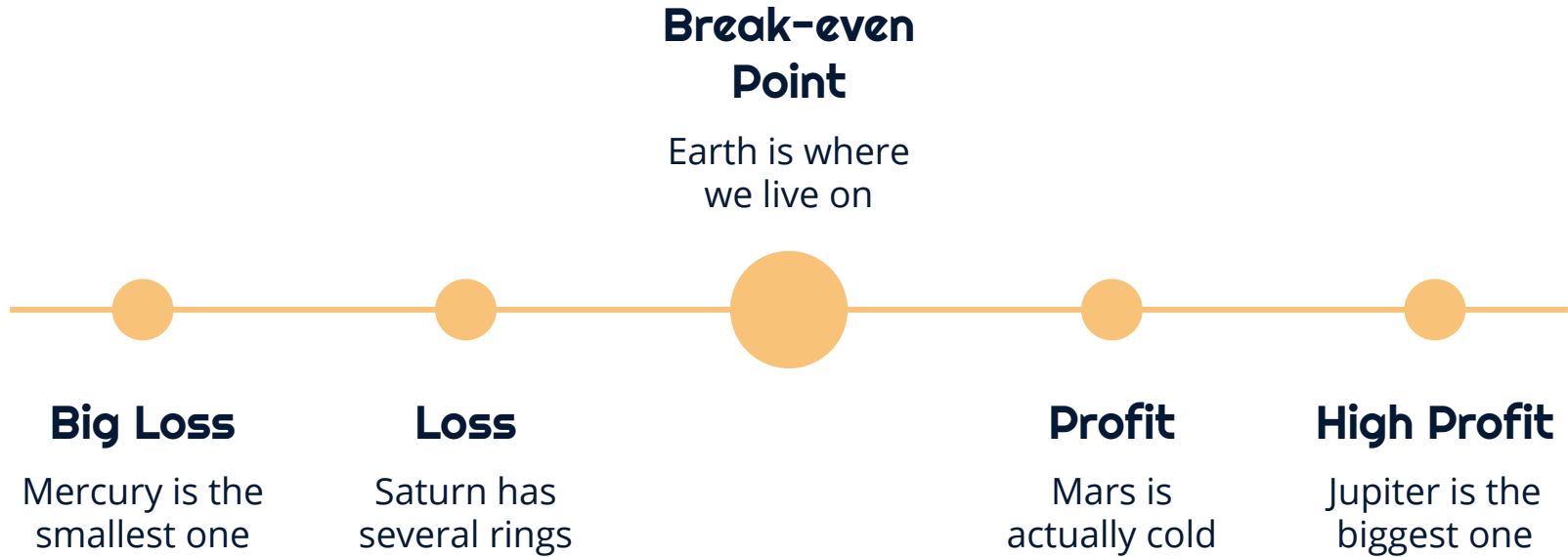
Saturn is a gas giant and has rings



## Neptune

It's the farthest planet from the Sun

# BREAK-EVEN ANALYSIS



# OUR SERVICES

**BASIC**

Service 1

Service 2

Service 3

**SHOP NOW!**

**STANDART**

Service 1

Service 2

Service 3

**SHOP NOW!**

**PLUS**

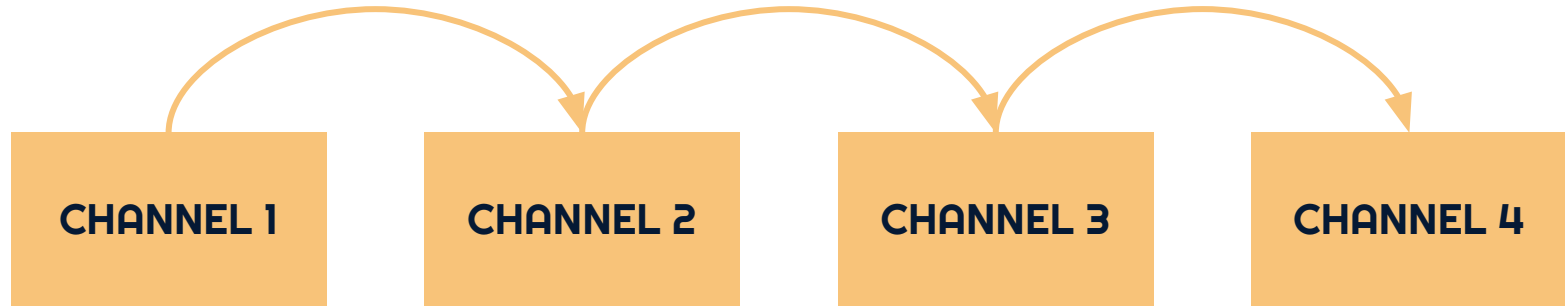
Service 1

Service 2

Service 3

**SHOP NOW!**

# SALES AND DISTRIBUTION



**CHANNEL 1**

Mercury is the closest planet to the Sun

**CHANNEL 2**

Saturn is the ringed one and a gas giant

**CHANNEL 3**

Despite being red, Mars is a cold place

**CHANNEL 4**

Venus has a beautiful name, but it's very hot

# ADVERTISING AND PROMOTION



## Advertising

- Here you can talk about the actions
- Here you can talk about the actions



## PR

- Here you can talk about the actions
- Here you can talk about the actions



## Online

- Here you can talk about the actions
- Here you can talk about the actions



# OUR TEAM



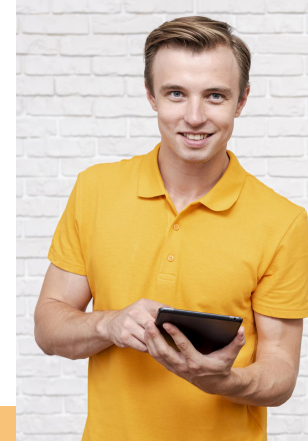
**ADVISOR**

Lola Bing



**CHAIRPERSON**

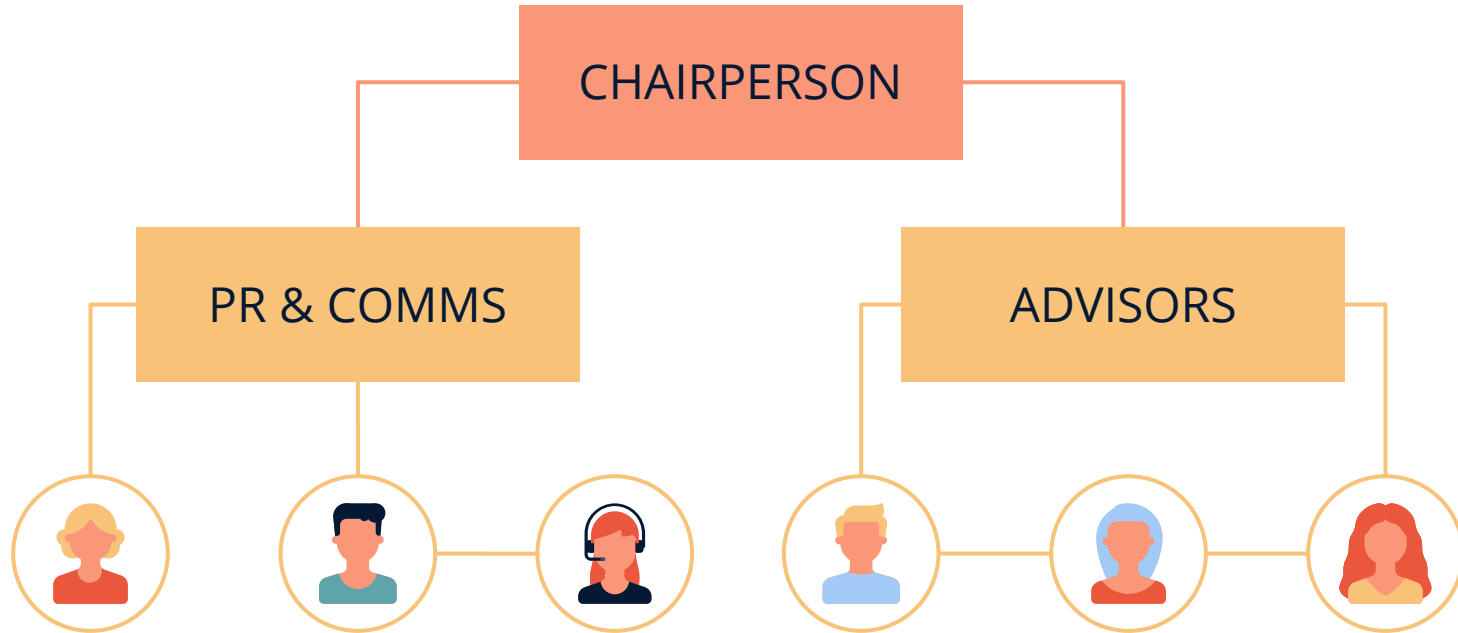
Anna Smith



**PR MANAGER**

Alex Hall

# ORGANIZATIONAL CHART

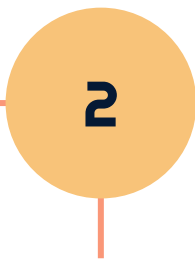


# OUR PROCESS

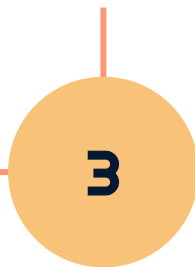
**Mars**  
Mars is a cold place



**2**  
**Mercury**  
It's larger than the Moon



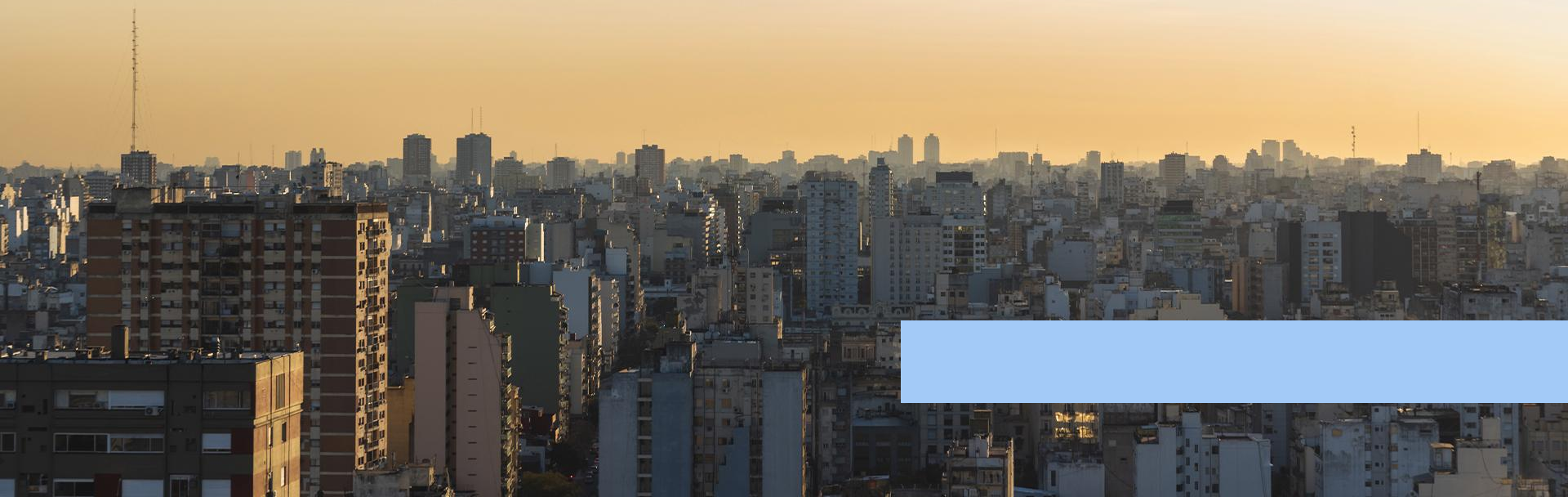
**Saturn**  
It has several rings



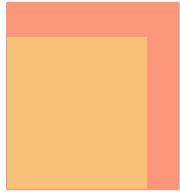
**4**  
**Jupiter**  
It's the biggest planet



# AWESOME WORDS



# PREDICTED GROWTH



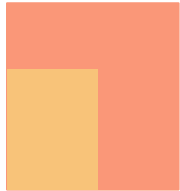
## **Venus**

Venus has a beautiful name, but it's hot



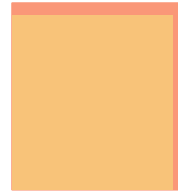
## **Jupiter**

Jupiter is the biggest planet in our System



## **Mars**

Despite being red, Mars is actually a cold place



## **Saturn**

It is composed mostly of hydrogen and helium

# BALANCE SHEET

**3m**

**INCOME**

What the  
company owns

**1m**

**EXPENSES**

What the  
company owes

**2m**

**BALANCE**

Difference between  
assets and liabilities



# ALTERNATIVE RESOURCES





# RESOURCES

Did you like the resources on this template?  
Get them for free at our other websites

## VECTORS:

- Background of businessman with bag of money
- Colleagues working together at the office pack
- People buying christmas presents
- Colleagues working together collection
- Colleagues working together illustrated
- Connecting teams concept for landing page

## PHOTOS:

- View of wide-spread urban area cityscape
- High angle corporate electronic devices
- Smiley senior lady looking at the camera
- Front view man holding a tablet
- Woman at work holding her notes with copy space

## ICONS:

- Urban Icon Pack

# Instructions for use

In order to use this template, you must credit [Slidesgo](#) by keeping the **Thanks** slide.

## You are allowed to:

- Modify this template.
- Use it for both personal and commercial projects.

## You are not allowed to:

- Sublicense, sell or rent any of Slidesgo Content (or a modified version of Slidesgo Content).
- Distribute Slidesgo Content unless it has been expressly authorized by Slidesgo.
- Include Slidesgo Content in an online or offline database or file.
- Offer Slidesgo templates (or modified versions of Slidesgo templates) for download.
- Acquire the copyright of Slidesgo Content.

For more information about editing slides, please read our FAQs or visit Slidesgo School:

<https://slidesgo.com/faqs> and <https://slidesgo.com/slidesgo-school>

# Fonts & colors used

This presentation has been made using the following fonts:

## **Righteous**

(<https://fonts.google.com/specimen/Righteous>)

## **Open Sans**

(<https://fonts.google.com/specimen/Open+Sans>)

#a3caf7

#eb573d

#5fa4ab

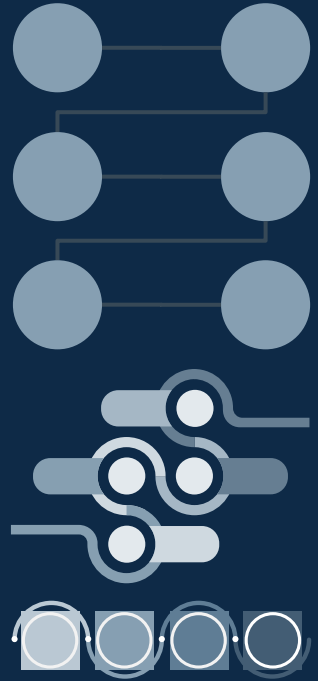
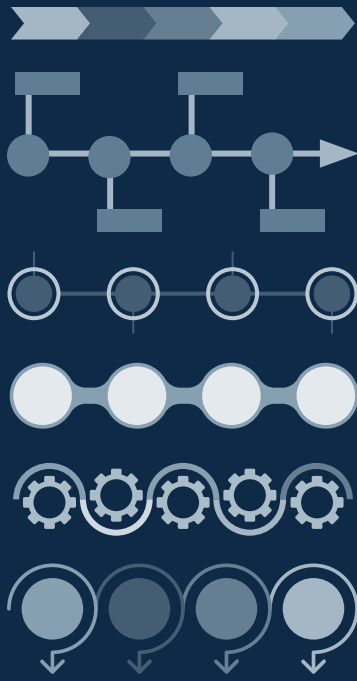
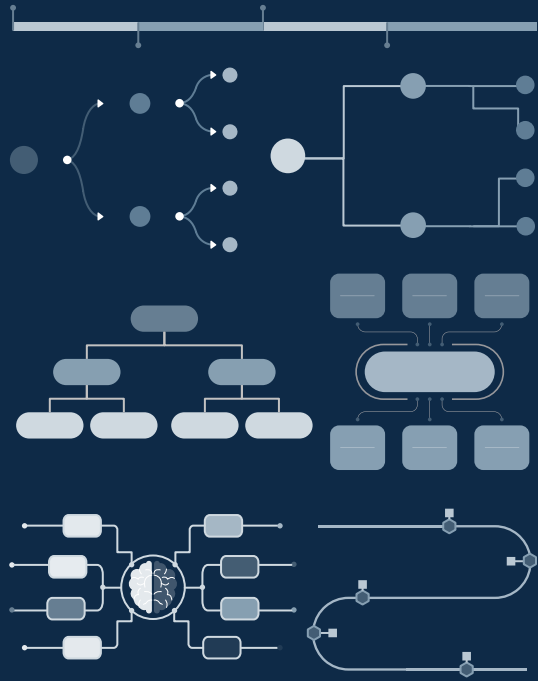
#f8c379

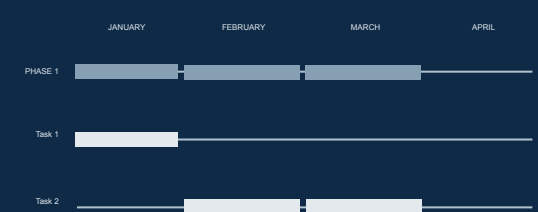
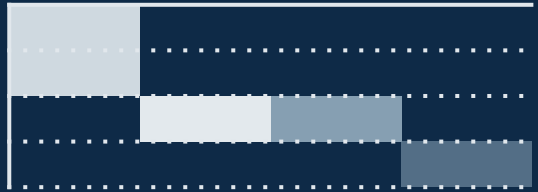
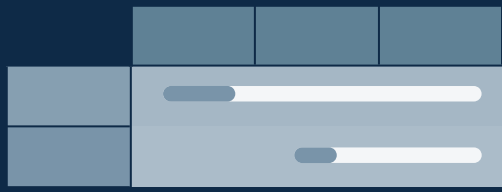
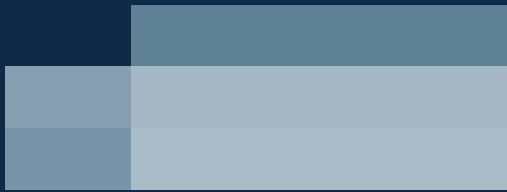
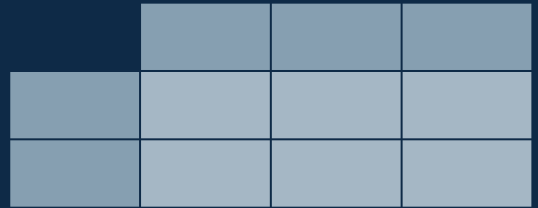
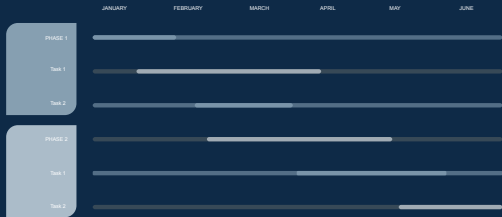
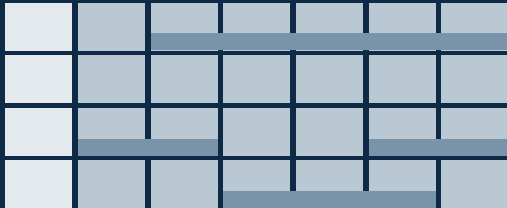
#fa9778

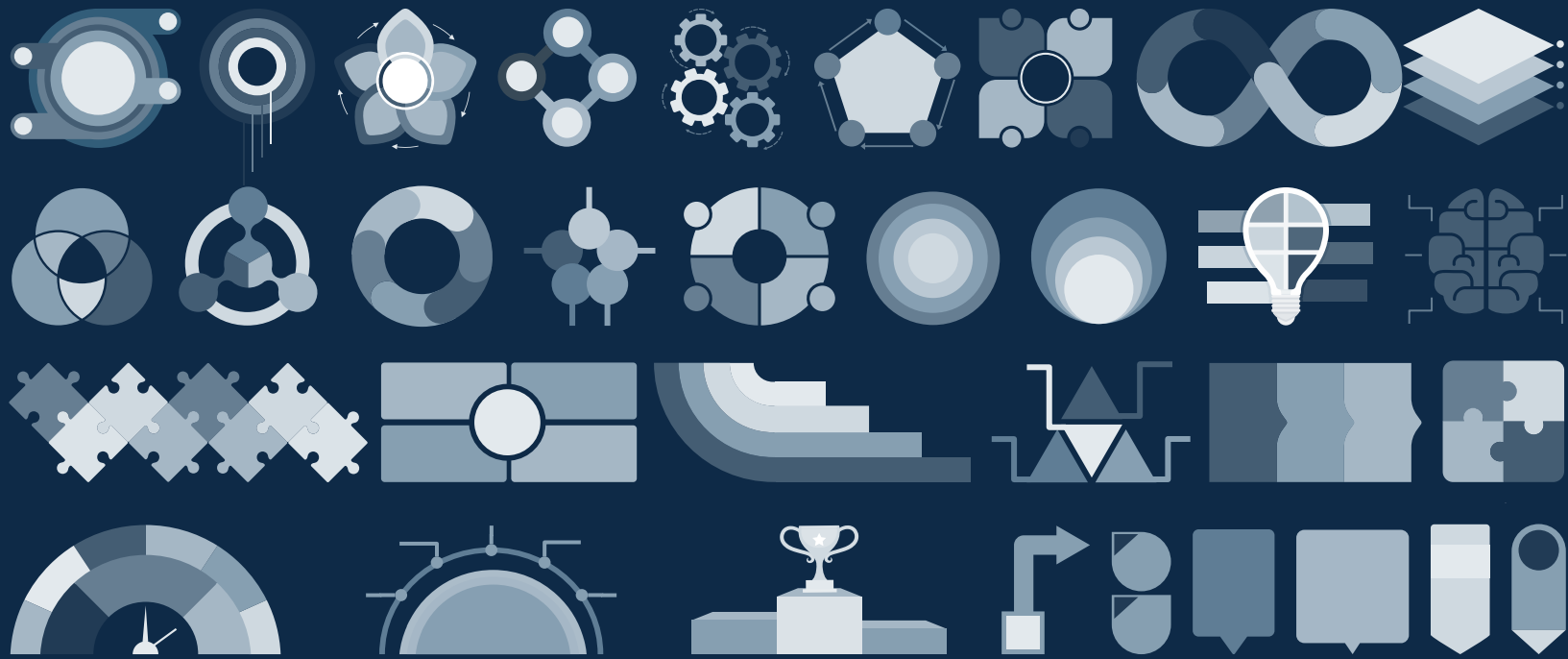
#051934



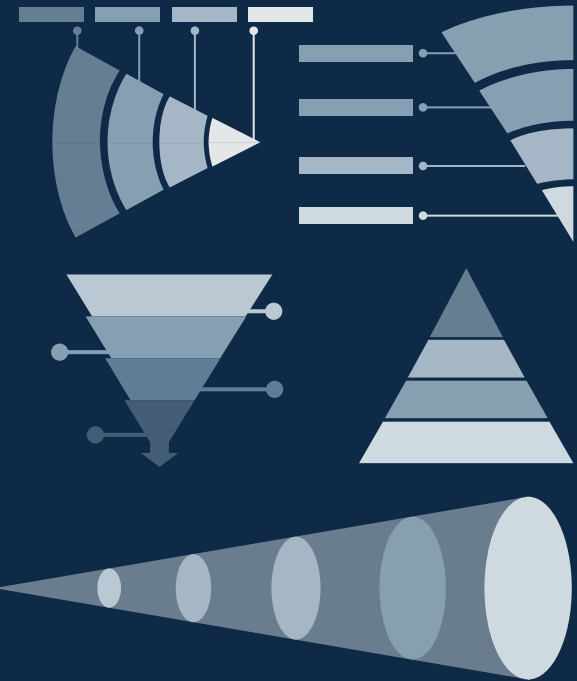
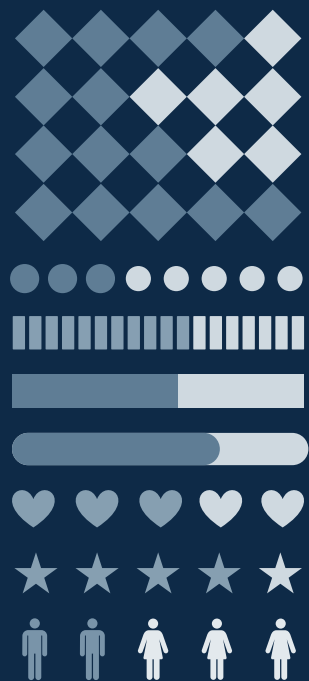
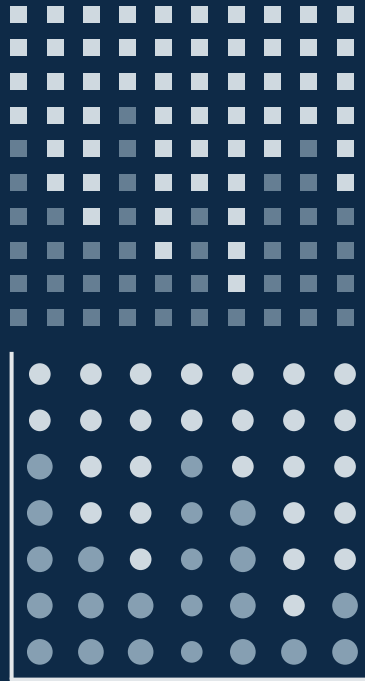












# ...and our sets of editable icons

You can resize these icons without losing quality.

You can change the stroke and fill color; just select the icon and click on the paint bucket/pen.

In Google Slides, you can also use [FlatIcon's extension](#), allowing you to customize and add even more icons.



## Educational Icons



## Medical Icons



# Business Icons



# Teamwork Icons





## Creative Process Icons



## Performing Arts Icons



# Nature Icons



# SEO & Marketing Icons





