

ClassOf2028

# PFLUGERVILLE ISD

**PLANNING FOR  
HIGH SCHOOL  
AND BEYOND**

[WWW.PFISD.  
NET](http://WWW.PFISD.NET)



# SCHOOLINKS

Online platform used by students, guardians, & school staff to explore, plan, and track career and college readiness.

## Why do I need a guardian account for Schoolinks?

- CAREER & COLLEGE EXPLORATION
- GOAL SETTING
- INTERNSHIP OPPORTUNITIES
- RESUME BUILDER ACADEMIC
- COURSE PLAN
- PERSONAL GRADUATION PLAN
- COLLEGE ADMISSION TRACKING
- SCHOLARSHIP MATCHING...
- AND MORE!

[Schoolinks.com](https://schoolinks.com)

The screenshot displays the Schoolinks website interface. On the left is a green sidebar with a logo at the top and navigation buttons: HOME (house icon), SCHOOL (apple icon), ACTIVITIES (pencil icon), COLLEGES (school building icon), CAREERS (briefcase icon), FINANCES (money bag icon), and PROGRAMS (dollar sign icon). The main content area has a 'Goals' header. It features two cards: 'Future Path' with an 'Apprenticeship' icon and a 'Change Path' button, and 'Career Goal' with an 'Electricians' icon and a 'Change Career' button. Below these are five endorsement categories, each with a list of options and a dropdown arrow: Arts & Humanities Endorsement (7 Options), Business & Industry Endorsement (22 Options), Multidisciplinary Studies Endorsement (3 Options), Public Service Endorsement (7 Options), and Science, Technology, Engineering, & Math (STEM) Endorsement (11 Options). The STEM endorsement is expanded, showing 'Engineering (CTE)' and 'Programming and Software Development (CTE)' with their descriptions and selection checkboxes.

**GUARDIAN  
SCAN ACC  
ESSTUDE  
NT  
INFO IN  
SCHOOLIN  
KS**

# THE TIMELINE: GRADE 8

**October / November** - School Links onboarding (student & guardian)

**January 25** - 8th Grade Invasion & HSCourse Fair Night

**January / February**- Counselors assist students with Personal

Graduation Plan & Academic (Course) Plan

**February**- student/guardian(s) meet with counselor to review &

approve Personal Graduation Plan and Academic (Course) Plan

# ABOUT GRADUATION PLANS

Students complete a Personal Graduation Plan in SchoolLinks to identify their high school and postsecondary goals. Guardians must approve the plan.

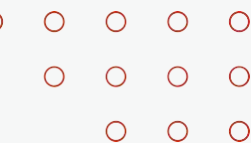
Students may change their plan after counselor verification that graduation requirements and appropriate career, college, and/or military readiness indicator(s) can be met. Guardians receive notice of the change.

Each spring students will have an opportunity to update their graduation plan and course selections for the next school year.

# SCHOOLINKS PERSONAL GRADUATION PLAN

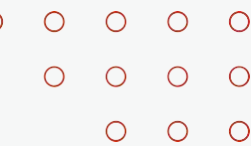
- ↪ TX Career Check interest profiler
- ↪ Goals: career, postsecondary training
- ↪ Endorsement selection
- ↪ Academic (Course) Planner
- ↪ Performance Acknowledgements
- ↪ Career, college, military readiness (CCMR) indicators
- ↪ Distinguished Level of Achievement

In grade 8 all students create a Personal Graduation Plan in Schoolinks, with assistance from school staff. Families are encouraged to participate in the planning process with their student(s); guardians are invited to a counselor meeting in the spring semester to [review and approve the graduation plan](#).



# COURSE SELECTION

- ↪ Students select EIGHT courses and TWO alternate courses. Alternate courses serve as a backup if your first choices are not available or do not fit in your schedule.





# GRADUATION REQUIREMENTS

**Foundation + Endorsement Program** (recommended: Distinguished Level of Achievement) 4

credits - English (English I-IV)

4 credits - Math (Algebra I, Geometry, Algebra II, advanced math course)

4 credits - Science (Biology, IPC or Chemistry, two advanced science courses)

4 credits - Social studies (World Geography, World History, US History, Government/Economics) 4 credits -

Endorsement (Program of Study)

2 credits - Language other than English (LOTE) 1

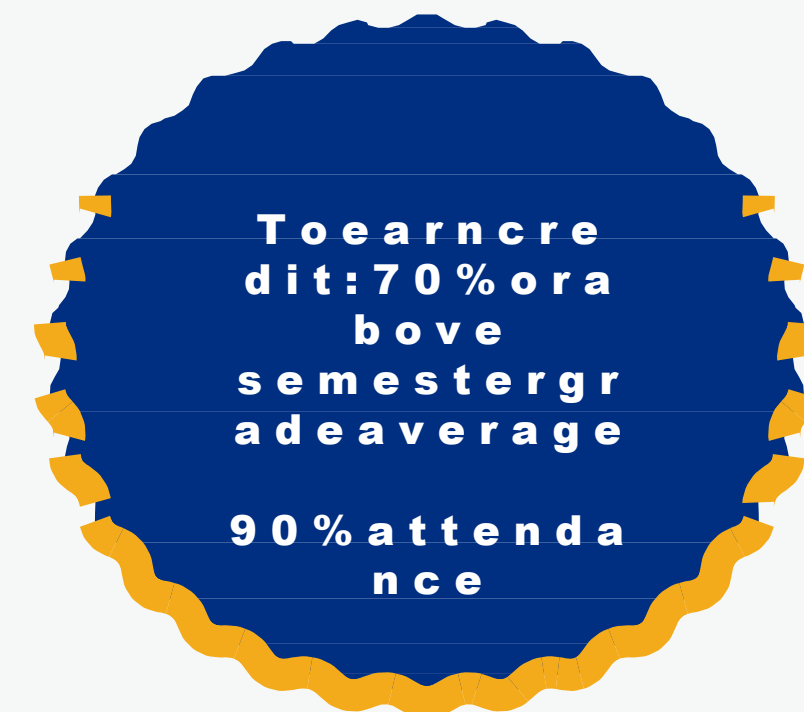
credit - Physical education (PE)

1 credit - Fine arts

1 course- Local requirement

4.5 credits - Elective (includes credits earned in program of study, local requirement, etc.)

5 End-of Course (EOC) exams: English I, Algebra I, Biology, English II, US History



**26 CREDITS REQUIRED**

# SCHOOLINKS ACADEMIC (COURSE) PLAN

ENDORSEMENT: multiple program options; students select a program of study from the endorsement area that aligns to their graduation plan goals. Courses are loaded into the course planner automatically.

ACADEMIC "CORE" COURSES: English, math, science, social studies  
Students select "Academic Pathway" or "Advanced Pathway" for each subject

LOCAL GRADUATION REQUIREMENT: five course options from which to choose, must earn credit for at least one (also satisfies elective credit requirement)




# SCHOOLINKS ACADEMIC (COURSE) PLAN

FINE ARTS: band, dance, art, choir, theatre, orchestra, musical theatre, color guard, drill team, technical theatre, music theory, digital art/animation, floral design

PHYSICAL EDUCATION: marching band, dance, drill team, cheer, athletic trainer, athletics

LANGUAGES OTHER THAN ENGLISH (LOTE): French, German, Spanish, Mand. Chinese, computer science, advanced track for native Spanish speakers (not all languages available at all campuses)

ELECTIVES: many course options, some credits may be satisfied through endorsement program of study, fine arts, PE, etc.



Alternative courses  
are selected  
in case of  
choice  
classes  
are not available

Learn more: [HS Course Guide](#)



# PFLUGERVILLE ISD LOCAL REQUIREMENT FOR GRADUATION

STUDENTS CHOOSE AT LEAST ONE OF THE FOLLOWING APPROVED COURSES. THESE COURSES MAY ALSO SATISFY STATE REQUIRED ELECTIVE CREDIT.

---

G E N E R A L      E M P L O Y A B I L I T Y      S K I L L  
S

H E A L T H

D O L L A R S      &   S E N S E

P R O F E S S I O N A L C O M M U N I C A T I O N S

M O N E Y M A T T E R S



# PFLUGERVILLE IS D HIGH AND COURSE PROGRAMS



Let's explore the programs and courses available to PfISD students.

Not all programs or courses are available at every high school campus. Some programs are available to all students through intra-district transfer (requires approval).

To learn more about the transfer process visit the PfISD Student Affairs webpage.

[www.pfisd.net/Domain/97](http://www.pfisd.net/Domain/97)

# **PFLUGERVILLE ISD**

## **DUAL CREDIT, ACCELERATED & ADVANCED CLASSES**

---

# PFLUGERVILLE ISD

## ADVANCED ACADEMICS

STUDENTS HAVE MULTIPLE AVENUES AT EACH HIGH SCHOOL CAMPUS FOR EARNING COLLEGE CREDIT

- Advanced Placement Courses AP
- Capstone Diploma
- University of Texas : On Ramps  
Austin Community College Dual Credit Advanced courses for 9th & 10th
- College Readiness Support through AVID

[More information available here](#)

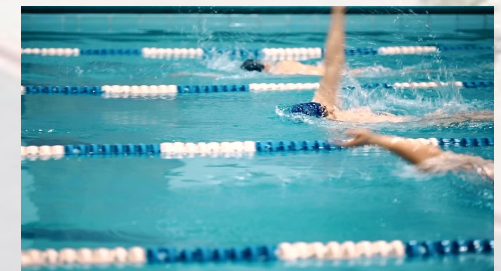


# PFLUGERVILLE ISD

## AVID

- AVID IS AN ELECTIVE COURSE THAT SUPPORTS COLLEGE AND CAREER READINESS THROUGH TEACHING STUDY SKILLS, PROFESSIONAL COMMUNICATION, ORGANIZATION, AND PLANNING. STUDENTS APPLY TO BE A PART OF THE AVID ELECTIVE.
- THE AVID ELECTIVE IS AVIALABLE AT ALL 4 PFISD HIGH SCHOOLS





Please click the icons/logos for more information







**Pf ISD offers 22 CTE programs of study aligned to in-demand occupations and industries.**

- Industry- based certification College
- credit options
- Career academies and P- TECH academies ( college certificates/ degrees) Paid internships
- with employer partners
- Student organizations ( CTSO) for leadership, competition, scholarship

[Pf I S D](#) [CT E](#) [we bpa](#)  
[ge](#)



[Refer to the CTE Program Guide for details](#)

# CAREER ACADEMIES

In a **Career Academy** students can earn a college certificate, at no cost. Students complete articulated and dual credit courses in the program area, and classes may be scheduled at the high school and/or college campus. Students can use these certificates to stack credit toward an Associate's degree and Bachelor's of Applied Science (where available). Students also participate in work-based learning which may include a paid internship with employer partners. *Completion of a career academy satisfies graduation endorsement requirements, and meets CCMR standards.*



## **Advanced Manufacturing Level 1**

**Certificate** Austin Community College (24 credit hours) Host campus: Connally High School



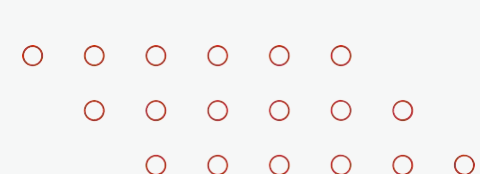
## **Basic Automotive Level 1 Certificate**

Austin Community College (32 credit hours) Host campus: Pflugerville High School



## **Culinary Arts Career Academy Culinary Level 1 Certificate**

Texas State Technical College (32 credit hours) Host campus: Connally High School



# P-TECH ACADEMIES



[Pathways in Technology Early College High School \(P-TECH\)](#) allows **students to earn up to 60 tuition-free college credit hours to complete a Level 1 Certificate and/or Associate's degree while in high school (at no cost)**. Students also have the opportunity to earn industry certifications and engage in work-based learning experiences with industry partners. *Completion of a P-TECH academy satisfies graduation endorsement requirements, and meets CCMR standards.*



**Cybersecurity Level 1 Certificate (27 credit hours) Cybersecurity Associates Degree (60 credit hours)** Texas State Technical College  
Host Campus: Connally High School



**Teaching Associates Degree (60 credit hours)**  
Austin Community College  
Host Campus: Weiss High School





## Benefits of Fine Arts classes:

- Focus on **personal goal setting** , **time management** , **team work** , and **self- discipline**  
Students who took **4 years of fine arts classes** scored [significantly higher on the SAT](#) than those who took 1 year or less
- **4 years** in any fine arts program qualifies for the **Arts & Humanities endorsement**
- Many colleges offer **scholarships** for those who continue in fine arts programs
- **97 % of [employers](#)** stated that **creativity** is of increasing importance in the workforce

[P f I S D](#) [F i n e](#) [A r t s](#) [W e](#)  
[b p a g e](#)



[More info in the Fine Arts Program Guide](#)





# Band and Color Guard

- **Marching Band** counts as **PE** credit
- **Band and Color Guard** count as **fine arts** or **elective**

- 

- elective Opportunities to **travel** for performances and

- 

- competitions

- 



- For students who plan to study music in college, **AP Music Theory**

- class is available with a **6.0 GPA** scale and potential college credit





# Dance and Drill Team

Dance and Drill Team count as fine arts,  
PE, or elective credit

- Opportunities to **travel** for individual and group performances and competitions

- **No previous dance experience** necessary for **Dance** classes / **Audit**

- **itions for Drill Team Scholarship opportunities** for students who perform with the dance team

in college, regardless of their major



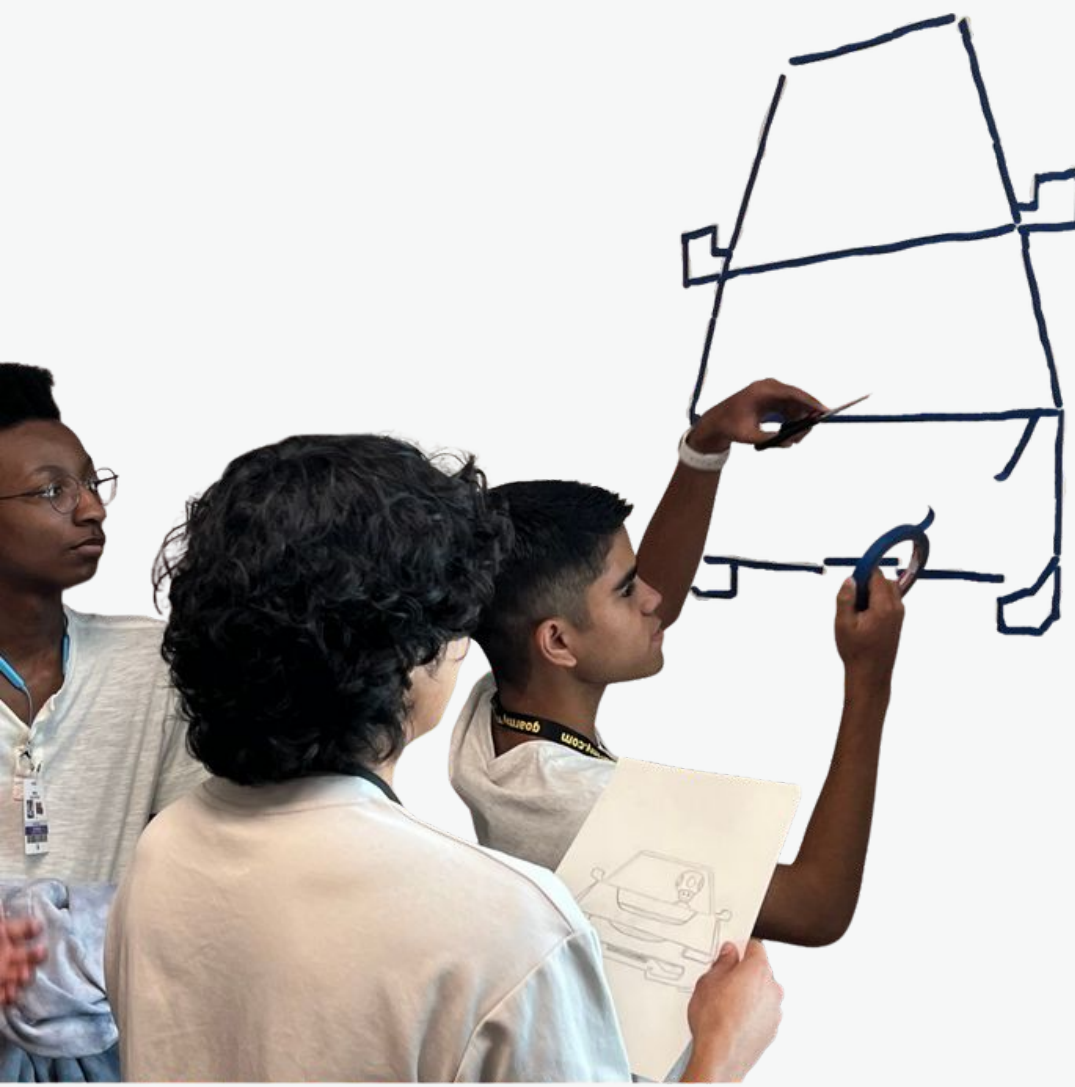




# Visual Arts



- **Art** classes count as **visual arts** or **elective** credit
- Opportunities to display work in **art shows** and enter into **competitions**
- Upper level classes specialize in **drawing, painting, ceramics,** or **sculpture**



- For students who plan to study art in college, **Advanced Placement** courses in **Art History, Drawing, 2D Design,** and **3D Design** use a **6.0 GPA** scale and can earn **college credit**
- Explore **career opportunities** for positions such as a **animator, ceramist, graphic designer,**  
**illustrator, muralist,** or **sculptor**





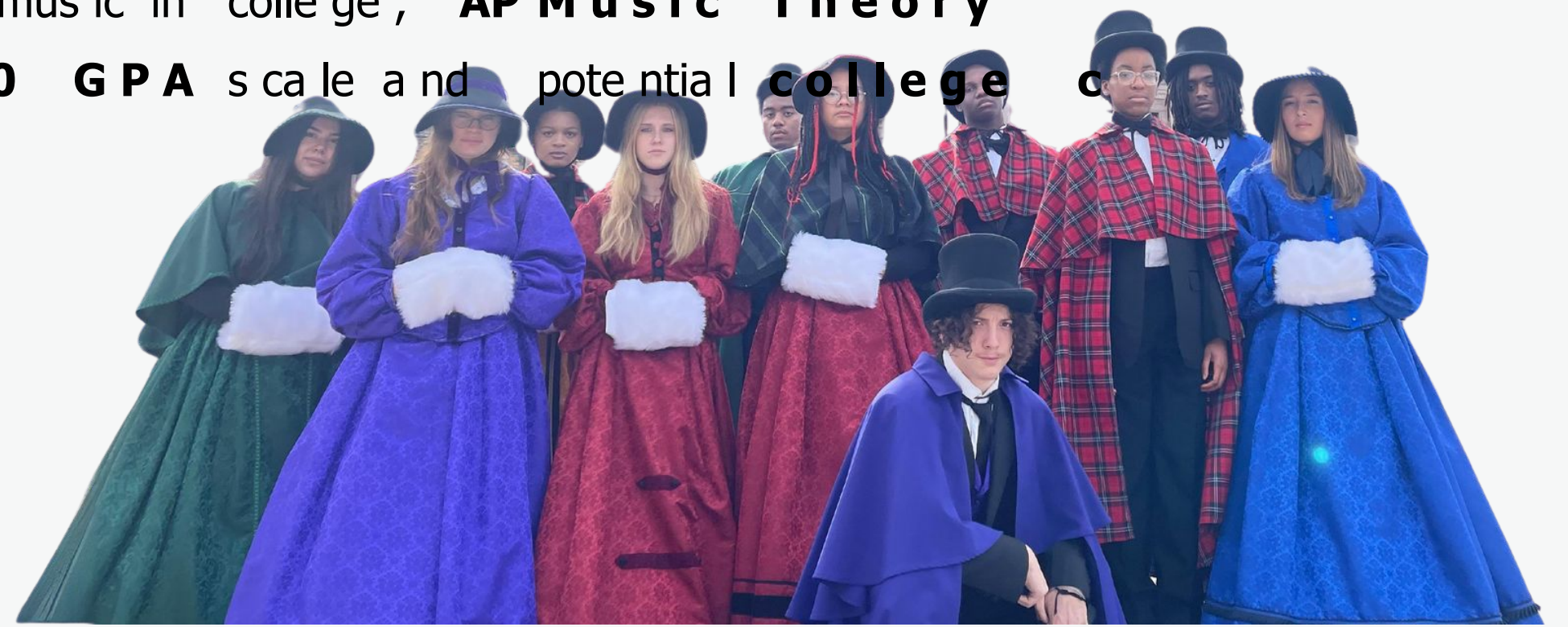
# Choir and Vocal Ensembles

- **Choir and Vocal Ensembles** count as **fine arts** or **elective credit**
- Opportunities to **travel** for performances and competitions
- **No previous choir experience** necessary for **Choir** classes/  
**Auditions** for **Varsity** classes and **Vocal Ensembles**

For students who plan to study music in college, **AP Music Theory** class is available with a **6.0 GPA** scale and potential **college credit**

**Scholarship opportunities** for students who sing in performing ensembles in college

 Pflugerville ISD  
Fine Arts  
regardless of their major.





# Theatre, Musical Theatre, and Technical Theatre

- **Theatre, Musical Theatre, and Technical Theatre** classes count as **fine arts** or **elective** credit

- Opportunities to **travel** for performances and competitions

- **No previous experience** necessary for **Theatre** and **Technical Theatre** classes / **Auditions** for **Productions** and **Musical Theatre**

- **Scholarship opportunities** for students who study the art in college







Interpretation  
Services

**100+**

Languages  
spoken in  
PfISD

International  
Newcomer  
Academy



WVMS & CHS

**LOTE**

Spanish  
French  
German  
Mandarin  
Chinese



at middle and high schools

ESL  
Program at  
**ALL**  
Campuses

for all eligible students

PfISD  
International  
Welcome  
Center



at Windermere Elementary  
School

[FOR MORE INFORMATION,  
VISIT OUR WEBSITE](#)



# GRADUATION FOR STUDENT RECEIVING SPECIAL EDUCATION SERVICES

- All Pf ISD students receive the same diploma
- All students will meet the minimum 22 credit state requirement ( Foundation program), plus local requirements
- Once a student receives modified or alternative instruction they have eligibility to receive services until 21 if they have:
  - vocational, transition, or academic needs that have led to employment, employability skills connected to outside service, or age out at 22 .

For more information on graduation email the Pf ISD Transition Designee - christopher.visness@ pfisd or speak with your Campus Coordinator for special education

**TAC § 89.10  
70**

# HIGH SCHOOL CONTINUUM OF SERVICES FOR SPECIAL EDUCATION



\*continuum of vocational services, including community- and functional communication, academic, vocational (VAC)\*

# TRANSITION SERVICES FOR STUDENTS RECEIVING SPECIAL EDUCATION SUPPORT

- All students 14 and older develop a postsecondary goal through assessment
  - drives annual IEP goals, services, course selection, transition activities, and support from outside agencies

It is important that both student and family are involved in decision making, and

- communication, for students to reach their postsecondary goals.

It is important all students are considered for gen ed settings

- decisions for special education services are based on many forms of data.

Once a student receiving special ed services graduates they will qualify for ADA services.

- no longer fall under the special education umbrella and services through laws under IDEA it is important that
  - your students contact Student Accessibility Services at an
  - postsecondary institution they might attend.
- 18+ services through Pflugerville Community Connect (PCC) and their home campus to meet annual goals after
- credit completion. [Information about PCC 18+ services](#)

**PRESENTATION: FUTURE PLANNING FOR STUDENTS WITH DISABILITIES**

Class of 202

8

**PFLUGERVILLE**

**ISD**

**GENERAL  
INFORMATIO**

**N**

[WWW.PFISD.NET](http://WWW.PFISD.NET)



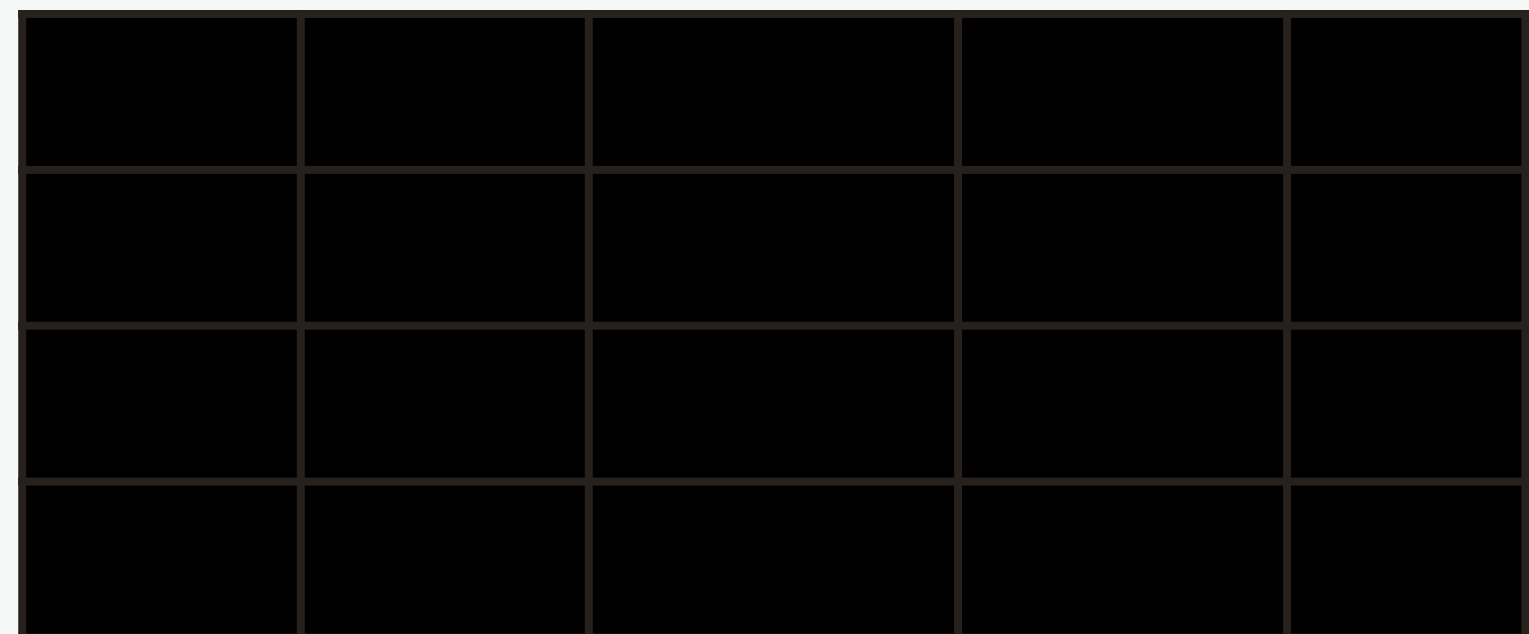


# BLOCK SCHEDULE

High school campuses operate on a block schedule. Students report to 4 classes per day.

- Single-block courses are approximately 90 minutes
- Double-block courses are approximately 180 minutes

\*some double-block courses meet 90 minutes every day





Find the GPA assigned for each course in the HSC Course Description

# GRADE POINT AVERAGE (GPA)

**Tier 1** (6.0 GPA) - eligible AP courses

**Tier 2** (5.0 GPA) - eligible advanced, dual credit, dual enrollment, and locally designated courses

**Tier 3** (4.0 GPA) - all other eligible courses not categorized as Tier 1 or 2 **Tier**

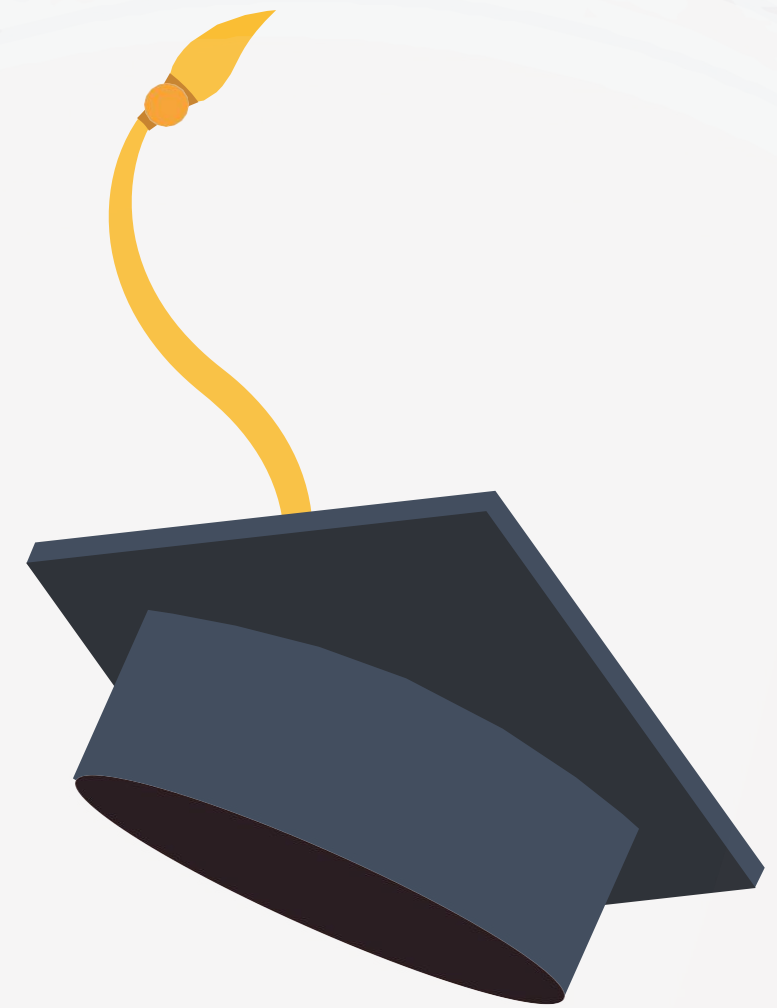
**4** - courses in which the content has been modified from the Texas Essential Knowledge/Skills (TEKS)

REFERTO THE [HS](#) [COURSE](#) [GUIDE](#) FOR MORE INFO  
RMATION



# RESOURCE GUIDE AND GLOSSARY

The following pages contain helpful links, a glossary of terms, and additional SchoolLinks information.



# PfISD A-Z “Find it Fast” Index

---

Links to many of the most referenced resources, including  
department websites, handbooks, forms, and  
more

[PfISD Pathways to Postsecondary Success webpage](#)  
[ACC Dual Credit Partnership information](#)

[PfISD HS and MS Course Guides](#)

[PfISD Credit by Exam information](#)

# INTRA-DISTRICT TRANSFER INFORMATION

- PfISD students may apply for transfer from their current [residence-zoned campus](#) to another district campus. Parent/guardian must submit online student transfer application within designated application window.
- Schools are open to transfers on a staff and space availability basis. Transfers to schools designated as open are approved on a space-available basis as long as student behavior, attendance, and academic expectations are met. Transfer may be denied if grade level or program nears capacity. Students with approved P-TECH application receive automatic transfer approval to the host campus.



Visit the Student Affairs In-district Student Transfer webpage for most updated information, timelines, and application link.

# GLOSSARY OF TERMS

FOUNDATION HIGH SCHOOL PROGRAM - the basic 22-credit graduation program for Texas public school students

ENDORSEMENT - area of specialized study, students must select at least one entering grade 9; STEM, Business/Industry, Public Services, Arts/Humanities, Multidisciplinary Studies

DISTINGUISHED LEVEL OF ACHIEVEMENT - requires specific number of credits in math and science and completion of an endorsement, option for state graduation plan and required for admission to a Texas public university under the Top 10 percent automatic admission law

PERFORMANCE ACKNOWLEDGEMENT - distinctions for outstanding performance in specific areas, noted on the high school transcript (record of coursework)

# GLOSSARY OF TERMS

PERSONAL GRADUATION PLAN - outlines a student's career and postsecondary education goals and maps the high school courses and activities to support achievement of these goals; this plan requires guardian approval and can be changed (with guardian notice)

CCMR INDICATORS - measures demonstrating student readiness for career, college, and/or military; included in the state school accountability system

ACADEMIC (COURSE) PLANNER - the tool in Schoolinks by which students select their high school courses in alignment with their graduation plan goals

GRADE POINT AVERAGE (GPA) - average grade earned calculated through a weighted system, final numerical course grades are converted to a scale score depending on course type and weighted scores are divided by the number of final semester grades to determine final GPA



# GLOSSARY OF TERMS

**ADVANCED PLACEMENT-** college-level coursework designed by the College Board, provides students potential to earn college credit with a qualifying score on an AP exam

**DUAL CREDIT -** process by which a HS student enrolls in a college course and receives academic credit for the course from both the college and the high school; academic and technical courses are available and could lead to achieving a college credential in HS

**PROGRAMS OF STUDY -** career and technical education sequence of academic and technical content courses that aligns with industry needs, progresses to advanced occupational skills, and culminates in attainment of a recognized credential; completion leads to endorsement

**CTE COMPLETER -** a student who completes, passes, and receives credit for 3 or more CTE classes for at least 4 credits, in an approved program of study (one course must be level 3 or 4)

# GLOSSARY OF TERMS

**END-OF-COURSE EXAMS** - state-mandated tests given during the final weeks of a HS course; five EOC exams are required to earn a diploma from a Texas public high school (English I and II, Biology, Algebra I, and U.S. History)

**STAAR** - State of Texas Assessments of Academic Readiness, state-mandated test given annually to students in grades 3-8 and at the end of five HS courses

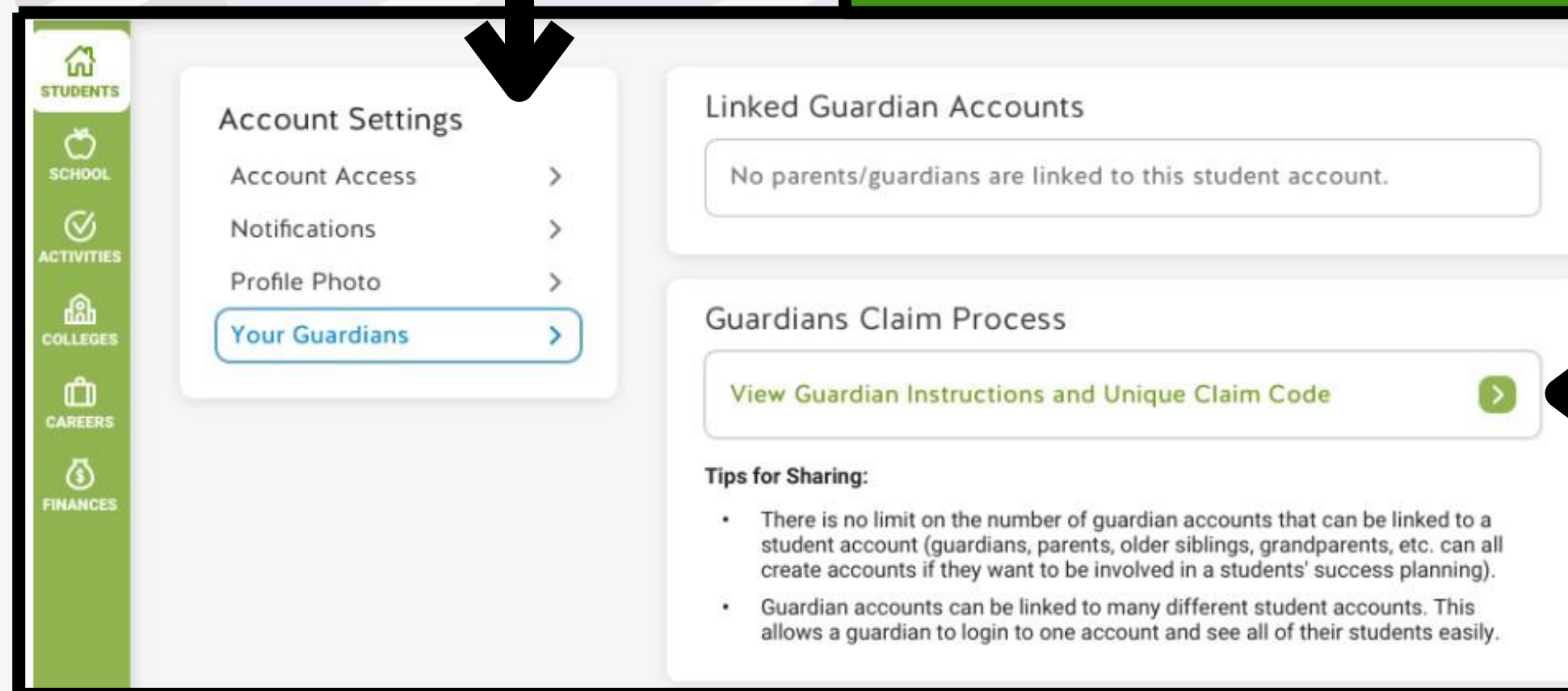
**INDUSTRY-BASED CERTIFICATIONS** - validation that student possesses certain skills, related to an occupation; recognized as performance acknowledgement and CCMR indicator

**COURSE CREDIT** - unit of measure awarded for successful completion of a course, can be affected by attendance and grades



1. LOG INTO STUDENT ACCOUNT, CLICK GEAR ICON (TOP RIGHT CORNER OF SCREEN)

2. CLICK "ACCOUNT SETTINGS" AND "GUARDIANS"



# SCHOOLINKS


**GUARDIANS CAN ACCESS SCHOOLINKS TO REVIEW:**  
**PERSONAL GRADUATION PLAN**  
**COURSE PLAN GOALS**  
**AND MORE**

3. CLICK "VIEW GUARDIAN INSTRUCTIONS & UNIQUE CLAIM CODE"

To claim John Herndon on SchoolLinks, create a new account or log in to an existing account using this link:

<https://app.schoolinks.com/onboarding/guardian/EyQdbK4>

If you need help, contact SchoolLinks using the chat button in the bottom right of any SchoolLinks page.

 Copy email & link

4. COPY THE MESSAGE AND EMAIL IT TO GUARDIAN

[Schoolinks.com](https://www.schoolinks.com)